



**The Queen's Award
for Voluntary Service**



East Sussex Foster Care Association
The Independent Charity Supporting Foster Carers

ANNUAL REPORT

2021-2022





East Sussex Foster Care Association
The Independent Charity Supporting Foster Carers

**4th Floor, St Marks House,
14 Upperton road,
Eastbourne,
East Sussex,
BN21 1EP**

**Charity No: 1092668
Company No: 04216137**



01323 747045



@ESFCAUK



admin@esfca.co.uk



e_sussexfostercareassociation



www.esfca.co.uk



@esfcainfo



Contents

Welcome to the ESFCA	4
Aims & Objectives	5
Trustees	6,7
Anne Buchan (Memoriam)	8
Patrons	9
Letter from the Chair	11
Fred Livings Youth Foundation (Fly Foundation)	12
Computer Donation	12
Lobbying, Advocacy, Surgeries	13
Allegation Support	14
Young People Who Foster, Children in Care Council, Through Care Team	15
Suitcase Initiative, Make it Reel Project	16
Book Club	17
Easter Eggs	17
Arlington Bluebell Walk	18
Intuitive Horse	19
EID Celebration	19
PGL Day Camp	20,21,22
Bates Green Garden	23
More Radio – Child of Sussex Awards	23
Go Ape! (Through Care Team)	24
Soapbox Race	25
UASC London visit	26, 27
Art Class	28, 29
Beachy Head 10k	30
Baby & Toddler Group	31
Horse Riding Project	31
Relax, Recharge, Reflect	32
Bowling	32
Quiz night	33
Christmas Party	34,35
More Radio – Toy Donation	36
Eastbourne Motorcycle Rideout (EMBR) – Santa Run	37
Pantomime	38
The Landmark Trust – 50 for free	39, 40, 41
Backpack Project	42
Financial report	43,44
Message from Susanne	45
It takes a village	46,47
Thank You	48,49,50,51
How you can support us	52

Welcome to the ESFCA

“Facilitating life changing experiences for fostered children to enable brighter futures for the whole fostering family”

In March 1993 a small group of foster carers in the Uckfield area started to meet regularly in a back room of a retirement home in Hailsham. It was created in response to the needs of the children and young people in the care of East Sussex County Council (ESCC) and the demands this placed on foster families.

East Sussex Foster Care Association (ESFCA) aim has always been to “build brighter futures” for children in care and to support foster families in their role, including recognising the contribution our own children make. This continues to be done through fundraising so that we can deliver a large range of activities and services.

Over the last 28 years ESFCA has grown from the Uckfield support group to the association we are today, covering the whole of East Sussex and over 240 foster families.

ESFCA has always remained proudly independent of the ESCC, but we are also very proud of the very special relationship it has created with the fostering service and social workers.

The association arranges surgeries monthly for foster carers to attend and is often asked to provide feedback on policies and practices. Social workers take part and join the children on PGL residential trips and volunteer to help on some of the activities the association run throughout the year.

The association feels strongly about training and education for the members and regularly provides training seminars and conferences for the carers, social workers, and the various child services across East Sussex.

ESFCA has a goal that grabs the imagination of all foster carers and volunteers, and that is to allow the children to create their own happy memories by having fun and taking on activities by bringing them out of their comfort zone.



AIMS & OBJECTIVES

The objectives of East Sussex Foster Care Association as set out in the Memorandum of Association and Articles of Association are, to promote all or any charitable purposes for the benefit of the community mainly but not exclusively within the County of East Sussex and in particular the advancement of the education of the public in matters relating to substitute care. The education, training and support of foster carers and their families, the relief of Looked After Children, their Carers, and their Carers' families by providing facilities and services in the interests of social welfare with a view to improving their conditions of life.

The Associations aim is to support East Sussex Foster Carers and their families in their efforts to achieve the best possible outcomes for the children in their care by working in partnership with all appropriate statutory and voluntary agencies. It undertakes this task by offering a range of events, advocacy, training, and support for the both the families and the children they care for. Its membership comprises of East Sussex Local Authority registered Foster Carers. The management group is formed from elected Trustees/Directors', largely from within that membership but not exclusively as the board benefits from the ongoing support of others with backgrounds in children's services.



TRUSTEES

Chairperson- Susanne Beesley

My family and I have been fostering for over 30 years, our second son was only a few months old when we began, and our third son was born some years into our fostering journey.

Our family grew through the adoption of our 2 daughters and long-term fostering. Our goal has always been to provide longer term stability to the children we have fostered, and we are always delighted to be able to keep in touch with these young people and see them as extended members of our family today.



Vice Chairman- Mark Thornborough

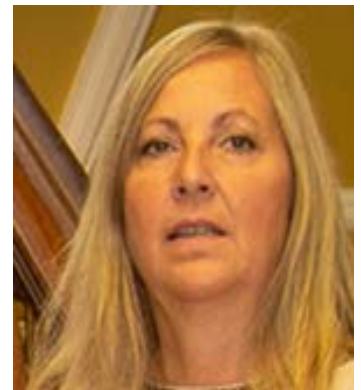
Mark and his wife Andrea have been fostering for many years, Mark is very active in ESFCA as he runs the very successful PGL trips with Tina and the team of dedicated volunteers. Mark also takes an active part in the administration of ESFCA and manages the staff and office to ensure things run smoothly.



Treasurer- Lysette Grosvenor

Myself and my husband Gary have been Foster Carers since 2015. We have looked after over 30 children. We do this full time together. We have done short term care, respite cover, emergency placements and more recently long-term fostering.

Every child is different, and it is so rewarding when they learn and develop new skills and accomplishments like reading, swimming, and riding a bike. I also enjoy helping them become independent with skills like shopping, saving money and cooking.



Founder Trustee- Tina Henderson

Hi, my name is Tina Henderson and my family, and I have been fostering for over 30 years. We are also adoptive parents to our wonderful son.

My start in life was not the best and I use this experience to try and help other children. We can offer long- and short-term home for children and enjoy doing assessment placements and respite.



Founder Trustee- Ann Holder MBE

My family and I have been fostering since 1975 (with a short break when my daughter was born) and we also became adoptive parents. We mainly care for babies which I really enjoy.

I also actively get involved with pre-adoptive work and working with families. I received the MBE for services to fostering in 2007



TRUSTEES

Trustee- Ru Petraitis-Williams



Ok, my name is Ru, my husband Kevin and our daughter Blue have been fostering for over 14 years. Our life has become so very fulfilled and it's a fantastic journey in so many levels.

We have the privilege to have children coming into our home and share the challenges we face and achievements we conquer. The children who come into care are so resilient teaching us so much in how we can appreciate life in general.

We foster children between the ages of 5 to 15 years old and being foster carers is the most rewarding thing we do.

Trustee- Anja Leeves

Anja & Nick (Anja's husband) have been offering foster families respite for over 7 years and Anja has also been an active participant in ESFCA. The Baby & toddler meet ups are arranged between Anja & Ann and Anja also leads the way in foster carer wellbeing by running the Relax, Recharge and Reflect.



Trustee- Sandra Maylam

Sandra has been instrumental in offering all-round support and is an asset our team. Sandra takes an active role on the Inspire Project and when she isn't with us, she is enjoying a well-deserved break living the dream along the canals in her narrowboat.

Trustee- Christine Phillips

During my career as a SEN personal advisor, I became acutely aware of the difficulties faced by looked after children. I was in awe of the foster families love and commitment to these children, many of whom could present significant challenges.



Could this be you?

We are currently seeking new Trustees and would welcome expressions of interest if you feel you would be able to contribute to the planning & development of the charity.

If you think you would be interested, in becoming a trustee please contact.

Susanne.beesley@esfca.co.uk



Anne Buchan

1953-2022

On January 2nd 2022, East Sussex Foster Care Association trustees and members lost a dear friend.

Anne was an amazing social worker with a hugely positive outlook and a great sense of humour. One of her greatest skills was her ability to make foster carers feel valued.

After many years of being one of our beloved social work supporters, we were delighted when Anne became a trustee for East Sussex Foster Care Association, we valued her contribution greatly.

Anne was a true champion for children and young people who foster and always acknowledged their very important contribution to fostering. Anne will be truly missed by all who knew her.

We are planning to celebrate her life and keep her memory alive with the launch of a new award. The award will involve ESFCA requesting nominations for a child / young adult who has shown exceptional care and support towards their foster sibling/s.



PATRONS

Jayne Torvill OBE

Once again, we would like to thank Jayne Torvill OBE for her continued support and Patronage. Jayne has been a Patron for ESFCA since 2012 and has taken part in many events and fundraising activities. Jayne is a strong advocate of ESFCA and feels passionate about making a difference in young people's lives.

"I feel passionate about making a positive difference to the lives of children. The opportunity to work with a local charity that offers opportunities to move children forward in their lives is incredibly important. I am looking forward to contributing to their experiences and helping to create special memories".

Jayne Torvill

Dame Jacqueline Wilson DBE, FRSL

We also thank Dame Jacqueline Wilson DBE, FRSL (Fellowship of the Royal Society of Literature) for her continued support. Jacqueline became a patron in 2018 after meeting the trustees at our annual Bluebell Walk event and has continued to support the association at many events including our Christmas message sent to the foster families on Dec 24th 2020, and launching our book club in January 2021.

"I've been involved with foster care associations ever since I wrote my book The Story of Tracy Beaker and I'm always impressed by the care and dedication of foster carers, but I think everyone at ESFCA are the absolute best. I love the sound of the residential breaks, the thoughtful provision of new luggage, the arts project, the library, and the day trips."

"All power to ESFCA"

Dame Jacqueline Wilson DBE, FRSL





Letter From the Chair

Dear all,

During the 21-22 financial year, the fostering community have come under increased pressure both locally and nationally, as wider social issues impact our communities. Unsurprisingly, many of our families have reported that life with our children has felt more challenging. The pressure on fostering families has increased, as we experience the inevitable retirement of many long serving carers, at a time when the numbers of children entering the care system has risen and the number of new carers has decreased.

This has a twofold impact as case workers responsibilities have intensified, alongside the increased needs of fosters families. Unsurprisingly, families report dealing with children who are often presenting with more complex needs, at a time when the support available has been diluted both in terms of the respite care available and other accessible professional support, such as children's mental health. Whilst we must acknowledge the number of families who have rallied round to offer extra placements for some of our counties most vulnerable children; sadly, we also must recognise the link between the intensified pressure upon households and increase number of complex and often serious allegations experienced by our carers.

In a bid to achieve the best possible outcome for our children and the families who care for them, we continue to partner up with other appropriate statutory and voluntary agencies, to support our children and the loyal families who care for them. In just this financial year ESFCA has yet again been recognised by grants received both from BBC Children In Need and the Youth development fund. Many other funders also acknowledge us as the deliverers of the much-needed extras, children need and deserve. Our PGL residentials (funded by BBC children) is one example which has been substantially overprescribed this year; meaning we sadly do not have the capacity to meet the full needs of our children.

Whilst we recognise the importance of East Sussex County Council (ESCC) as the Corporate Parents and taking responsibility for the overall picture, ESFCA has quickly adapted to the exceptional circumstances with which we were faced, again working unrelentingly in close partnership with ESCC. Considering the importance of working closely with the team around the child and keeping our current difficulties in perspective, we can still feel very proud of our service as East Sussex Fostering Service is still one of highest achieving fostering services in respect of the numbers of in-house fostering placements achieved.

In an ongoing dialogue with Children Services, all professionals acknowledge the vital and highly valued service our families bring to the children we care for. Importantly, they have acknowledged that the rises in the cost of living predicted early last year, are now a reality and families are now feeling the financial pressure. Furthermore, our Local Authority recognise carers as having an ever-increasing professional presence, considering the level of

skills needed to manage the increasingly complex needs of the children we care for. Importantly, they also recognise the need of increase financial support.

Our trustees are people who lead very active lives and often face their own adversities while staying committed to delivering our much-loved projects and thanks to our financial stability, this year has brought no exception. - Please do read on, in this annual report, carefully put together by Nigel Berry.

This year, East Sussex Foster Care Association (ESFCA) was made up of mainly busy foster carers, but not exclusively. We have several other trustees and friends of the Association who offer great insight and who we are proud to call part of our team of dedicated supporters. Please see page 45.

In January this year we lost a very special lady. ESFCA will always be grateful to Anne Buchan for all her years of service, not only as a Social Worker but also a valued member of our team and trustee. Anne was a champion for children of carers and had an exceptional understanding of the importance of their role within the fostering family. Alongside Anne's zest for life, her positive spirit and stoic energy never faltered, as she continued to offer up her time to support others right up to her untimely passing. Anne's presence will be greatly missed. You will read about an award in this report that we are planning on launching in partnership with Annes family, to keep her memory alive.

My sincere gratitude goes out to all our trustees and supporters who are named on page 45. We are extremely privileged to have such a dedicated team of individuals including our community partners who continue to serve and support and improve upon the projects we deliver year after year.

This year ESFCA's ability to flex and adjust to unprecedented times, has been tested more than ever before, however this prepares us for the challenges ahead in uncertain times.

Finally, despite the current climate meaning we need to continue to prioritise and re prioritise, to achieve the best outcomes, we must remember that we have come a long way and achieved much. We have always learnt from the projects and other support services we deliver, and we will continue to work with our Local Authority to seek solutions to the bigger, systemic problems our children and families face.

Yours

A handwritten signature in black ink, consisting of several overlapping loops and a vertical line extending downwards.

Susanne

Fred Livings Youth Foundation (Fly Foundation)



The FLY Foundation has been set up by the late Fred Livings wife Bruni, and family to continue his tireless work of improving the lives of looked-after children. Fred was a former Chair of ESFCA.

The Foundation is designed to foster new or existing extra-curricular skills, with the overarching aim of helping to further develop each child's self-confidence and self-esteem. This will be achieved by the granting of funds for either an essential item (such as an instrument or dance shoes) or a service (such as

lessons or a subscription), which will be awarded based on the child's application.

Equity, diversity, and inclusion are at the heart of the award, so whilst the application is important in the family's view to demonstrate the child's passion and commitment to their chosen discipline/hobby, there will be several ways to submit the application to make sure every eligible child feels confident and able to enter.

As well as annuities from the family, we are proud to say that the ESFCA will be making an annual donation; we can think of no better way to honour Fred's memory and commitment than by supporting the work his family continue to do in his name.

Computer Donation



ESFCA were incredibly grateful to receive six computers (refurbished) kindly donated from Sussex estate agent Phillip Mann. The donation was arranged by friend (and ex-trustee) of ESFCA, Chris Thornton, who also refurbished the computers for the association.

The Computers were donated to foster families who needed the extra support for home schooling. The trustees and members wish to thank Phillip Mann for their generous gift and to Chris Thornton for facilitating the donation.

phillipmann
we do more

Lobbying

Our trustees and members are actively engaged with other organisations to network, debate, and promote the profile of foster carers in East Sussex as well as nationally. We lobby government departments and attend any meetings or debates that enable us to speak up for our members, their families and our Looked After Children (LAC).

ESFCA have regular contact with East Sussex County Council (ESCC), ESCC Child Services and Fostering Services and report on behalf of the fostering families annually to 'the Corporate Parenting Committee' for ESCC.

Trustees also attend regular meetings with the Fostering Network (Charity) and often take part in their campaigns and research.

Advocacy

ESFCA receives funds from East Sussex County Council as an annual grant which is held in a restricted fund (Advocacy Fund). This fund is used to provide independent support as required to assist any of our member foster carers who may be subject to an allegation or concerns around standards of care. These investigations can be complex and lengthy and can feel very isolating to a foster family as they are unable to discuss many of the issues with others due to confidentiality.

ESFCA are aware that if a serious allegation is made against a foster family member, then Supervising Social Workers are unable to support them whilst an investigation is ongoing. ESFCA has worked jointly with the fostering services to provide an extensive Allegation support pack and all foster carers in East Sussex are automatically signed up to The Fostering Network who provides **free independent legal advice**.

Surgeries

ESFCA holds monthly surgeries on the 3rd Thursday of every month where foster carers can bring to the table often complex and difficult issues that needs a fast-track resolution from senior managers in Children's and Fostering Services.

A trustee can attend the meeting to offer support to the foster carer in presenting their problem if requested. This support helps all parties to find a way forward or air complaints in a face to face and professional manner.

Foster carers are encouraged to come and talk through any difficulties in the hope of finding a way of resolving the difficulties quickly and efficiently. If the issue is around Adoption or Education, then ESFCA would seek to bring the relevant manager to the same meeting. For further information please contact.

advice@esfca.co.uk

Allegation Support

ESFCA understands that any foster carer who is subject to an allegation or standard of care investigation, often feels isolated, stressed and in need of support.

The role of a Foster Carer is a unique and challenging one. We look after some of the most vulnerable and challenging children, 24 hours a day and it is essential that we are properly supported.

Being subjected to a complaint or allegation can feel both hurtful and very stressful. Complaints can range from very minor concerns which require informal discussion, through to more serious complaints which need more formal consideration and action, to very serious allegations which fall within Child Protection procedures.

The outcome of complaints can therefore vary from discussion and advice, through to concerns and warnings, to deregistration and possible prosecution through the courts.

ESFCA and ESCC Fostering Services put together a joint working party to review, assess and improve the allegation support package available to the foster families. This process took over two months and resulted in an informative allegation document pack given to every foster family to ensure they have appropriate knowledge, information, guidance, support, and legal advice.

The allegation packs include:

- Introduction letter from ESFCA Chairperson Susanne Beesley
- Fostering Network guidebook to allegations and Legal Support
- Contact sheet including a dedicated email address to ESFCA support, 24/7 contact phone number and the contact number to free Legal support
- Booklet 1- Containing an easy-to-use guide to the allegation process
- Booklet 2- Containing a more in-depth guide to the allegation process
- Wallet Card with the contact phone numbers and email address
- Fridge magnet with the contact email address.

These packs were sent to every foster family under ESCC Fostering Service and automatically sent out to every newly approved foster family.

If you need help or advice, contact us on
01323 747045
advice@esfca.co.uk

Young People Who Foster



This is a group that represents the birth, adopted and special guardianship children of foster families. These children share their parents and their childhood with the children who are fostered within their families. These incredible children help LAC coming into their home adjust to their new environment. The YPWF allow these children to have a voice and a place to share their

experiences. They also organise events (Halloween discos) and day trips out and regular meetups. ESFCA are again able to help finance some of these projects and help when asked.

Children in Care Council



The Children in Care Council (CiCC) is a group of looked after children which represents LAC across East Sussex and allows them to have a voice across the county. They represent LAC at events such as the Children and Young People's Trust conference. The

CYPT conference is where they meet other organisations that help and support young people in East Sussex.

CiCC also looks for ways to help young people plan, prior to the Covid lockdowns they had attended first aid and food hygiene courses which will help the children when they are looking for their first job (part/ full time).

These amazing children also provide backpacks which are gender and age appropriate, each backpack contains a toothbrush, socks, soft toy, hairbrush, pen, notepad, and a newsletter explaining who they are.

ESFCA is extremely proud of these children and supports them by providing the financial support to run some of the projects above.

Through Care Team

The Through Care Team (TCT) support young people and adults who are leaving the care system and help them to adjust to the realities of being independent. Young adults aged 16-25 with varying needs are supported by key workers to adjust to the big changes' adulthood brings. ESFCA is there to help on projects so they can continue to develop self-esteem and create positive memories.

Unaccompanied Asylum-Seeking children (UASC) is a department that sits under the umbrella of the TCT, and again ESFCA are proud to support some of the projects provided for these children. These projects support the education, integration, and the wellbeing of these children (young adults) who are adjusting to life in a new country.

Suitcase Initiative



Dignity and self-worth are key in the way a looked after child views and values themselves. This can be torn away from a child when they must leave their home with nothing but a rubbish/bin bag carrying the few possessions and clothes they have.

No child (especially foster children) should have to face the distressing sight of having their belongings packed into black plastic bags, when being moved either from birth family or to new foster placements. Black plastic bags are designed for rubbish and not for children's personal belongings.

ESFCA are proud to run an initiative that can help restore pride to the children entering the care system and have stock of luggage available to social workers and assessment teams and have already distributed over 200 suitcases to children that have had to be moved as an emergency or travelling to respite.

This initiative has also involved supporting the looked after children leaving the care system (16-25). The "Through Care Team", distribute luggage bags, hold-all's, and sports bags to help the leavers enter the community with dignity. Over 50 bags this year have been distributed to care leavers and in turn allowed them to maintain their dignity when moving to assisted lodgings or their own home.

This has been made possible by the amazing generosity from **Tripp Luggage** who has continued to support ESFCA over the last 7 years.

Make it Reel Project



Most families have Grandparents who spoil and make the children feel special by providing the little extras however looked after children often miss out on this influence. ESFCA acknowledge this and with a very generous donation from the **Reel Poster Company**, are able to step in and fill the role like a fairy godparent. ESFCA recognises that the East Sussex County Council has the responsibility to provide the needs of its

LAC (looked after children) and the "Make it Reel Project" can only be accessed via a foster child's social worker.

ESFCA would like to thank the Reel Poster Company for their support and below are some examples of how a small amount of money can make a real difference.

- Purchasing Weighted Blankets to aid with anxiety
- Spending money for a 14-year-old teenager who lives in a residential home, who went on her very first holiday with an old foster family she had remained in contact with.
- A necklace for a 16-year-old who was attending her Prom.
- Attendance at a Science club for 10 weeks.
- Providing a birthday present for a teenager who had just been received into care and she had been abandoned by her birth family.

Book Club



At the end of January 2021, (during the Covid Lockdown) ESFCA started an online book club allowing children to meet on-line (under adult supervision) to read and discuss books of their choice.

The book club started with a video from our patron Jacqueline Wilson launching the club and introducing the first book “**I Dare You- Tracy**

Beaker”. Jacqueline then went on to speak about the character “Tracy Beaker” and the storyline we would all be following.

We decided to open the book club membership to all children. This would allow our looked after children and young people who foster to invite their friends (who are not in the care system or a carer) and enjoy the club together.

Once again, our friends at “Much Ado Books” stepped forward and donated a copy of the book to every member free of charge through their Prospero’s Project. We extend a massive thank you from the association and on behalf of the children from the club.

The Club continued into the summer of 2021 where it was decided to take a break and enjoy the summer months and then to return in the Autumn.

Easter Eggs



During the Easter holiday season, ESFCA paid for & donated over 197 Easter eggs to the Through Care Team (the department looking after young adults leaving the care system). The eggs were given to the young adults living in supported lodgings or on their own. The last year full of Covid restrictions meant 2020 was a particularly lonely year and small gifts (advent calendars at Christmas, chocolate eggs at Easter) help remind these care leavers that they are being thought of and people care.

This holiday period also saw our friends at Sainsbury’s (Hampden Park) donate 50 Easter Eggs and games. This long-term community partnership with Sainsbury’s continues to grow stronger and this year, 50 children under the ESFCA umbrella received chocolate treats and games. We thank Sainsbury’s for its generous donation and continued support.

Arlington Bluebell Walk



During the spring of 2021 Covid restrictions started to relax, which allowed the Arlington Bluebell Walk to operate (though at a reduced offering). Another strong community partner, the Bluebell walk is one of the most popular events of the ESFCA calendar, and it was great to be back. This year we could not supply refreshments due to limited Covid restrictions, however ESFCA volunteers rallied together after 2020's event being cancelled (due to lockdown) and marshalled the walk for visitors enjoying the Anemones, Bluebells, and the fresh country air.



Intuitive Horse



ESFCA fund sessions with Intuitive Horse for traumatised children offering a one-to-one session with specially trained horses that bond with the child and assist in developing trusting and emotional connections.

During May, ESFCA were asked to support a request for a child to be accepted onto the Intuitive Horse programme. The project involves looked after children attending 6 sessions individually to help the young person, depending on their needs, explore confidence building, emotional awareness, impulse control, building trust in relationships, learning how to calm themselves, developing empathy and overcoming fears.

Eid Celebration



During the holy month of Ramadan, the Unaccompanied Asylum-Seeking Children unit (UASC) approached ESFCA and asked if we would be willing to support them with an Eid celebration for their young people.

Eid is a worldwide festival and celebration for Muslims. There are two Eid's through the year and Eid ul Fitr means "festival to break the fast" which is celebrated at the end of Ramadan

UASC arranged to meet at a park in Eastbourne and with the support from ESFCA and some local restaurant's the group celebrated with a hot Halal buffet, fruit, and sweet treats. Games were played and friendships were formed.

Over 24 young adults (children) attended the celebration.

PGL Day Camp



One of the most popular activities ESFCA runs is the residential weekends each year using PGL activity centres. This is only made possible with the continued support from our community partner Children in Need.

We aim to run two residential weekends for our looked after children for ages 7-11 and 12-17 and one residential for our Young People Who Foster, each residential takes 25 (approx.) children and over 10 supervising adults, and they are always oversubscribed.

These are more than a few days holiday though. They help create confidence, resilience, and a positive attitude by taking the children through a series of activities and experiences. These activities take the children out of their comfort zone and make them face their phobias. To enable a stronger relationship between the children, they share in the activities and help each other survive the death-defying challenges that team PGL creates.



During 2020 the PGL trips were cancelled due to the Covid Lockdowns, however during 2021 and the lifting of restrictions, we were able to run five day-camps at the PGL Windmill Hill activity centre.

As there were still no residential bookings allowed at the time of creating the event, the decision was made to create 5 activity days and invite more children. Giant swing, zip wire, obstacle course & canoeing were on offer and the children had a great time. Over 130 looked after children attended the days accompanied by over 50 adults (Social workers & foster carers) joined them.





Like every child, Looked After Children need and deserve to feel loved cared for and supported and children entering the care system are no exception. At the very least, these children and young people will be feeling the effects of emotional trauma. Many will have experienced neglect or abuse in its many guises and are very likely to be dealing with the aftermath of witnessing domestic violence. Unsurprisingly, these children often also feel a sense of abandonment and carry the burden of a low self-esteem which makes fitting in with their more fortunate peer group a struggle.

We are very thankful to the social workers and foster carers who volunteer to join us on these trips as it creates a very positive bond between the children and the adults. Self-esteem and confidence are re-enforced as they help each other through the activities. The children cheer the adults on when they are flying on a zip wire or paddling like mad to win a race in the canoes just as much as the adults are cheering on the children.

These trips create bonds between the children themselves, which we see when they meet up at the Christmas party or other activities through the year. They also create positive memories that will stay with them for the rest of their life. Certificates and medals are handed out at the end of the visit where we hold our own award ceremony and there are very often tearful farewells. (though no-one sheds more tears than Tina, our trustee, who organises the PGL trips).



Bates Green Garden



Bates Green Garden is found at the same location of the Arlington Bluebell Walk, and from May until October remains open to the public (on Wednesdays). The garden was planted by Carolyn McCutchan who was an award-winning horticulturist and acclaimed Plants-woman and was often featured in publications such as “The English Garden”, “The Sunday Telegraph”, and “Homes & Gardens” to name but a few.

Carolyn became ill in 2012 and the garden became neglected, however after undergoing restoration, led by Emma Reece, the decision was made to re-open the garden to the public in Carolyn’s memory and raising funds for the local hospital. Volunteers from ESFCA ran the refreshments on 30th June

More Radio – Child of Sussex Awards

The 15th of July saw the launch of the More Radio Child of Sussex Awards. ESFCA once again took the opportunity to sponsor the Gold Award. More Radio listeners were asked to nominate children that deserved recognition in a host of categories. The Gold Award allows an extra special child to be nominated, but whose story does not fit this existing category. Due to covid restrictions, the Award ceremony was postponed until the summer 2022.



Go Ape! (Through Care Team)



The Go ape treetop challenge was the event that brought over 40 young adults together for the first time in over a year. The Through Care Team organised the event and ESFCA was very happy to sponsor the activity.

The young adults, accompanied by support staff, took to the treetops above Bedgebury National Pinetum where they engaged with each other, worked as a team, and had fun in the process.



Soapbox Race



ESFCA were thrilled to take part in the inaugural Soap box race, held at the base of the Southdown's along Kings Parade. Though not racing this year, volunteers helped marshal the course and kept closed roads clear for emergency vehicles (if needed).

Pictures courtesy of "Media Attention"



Unaccompanied Asylum-Seeking Children London Visit

ESFCA was proud to support the Unaccompanied Asylum-Seeking Children with their trip to London. 42 children (young adults) visited the key landmarks of London including the Houses of Parliament, Buckingham Palace, the Tower of London and more. As most of the children had not ventured outside of East Sussex the experience was awe-inspiring and allowed the children to embrace the history and pageantry of the country they have travelled to and hope to start a life for themselves.

Below are a few quotes from the children who attended the trip and on the page opposite a letter from a social worker who also went on the trip with the children.

EM, KS, and YA have asked me to express just how much fun they had today with the trip to London, and they wanted me to send a big thank you to those who made the trip possible.

EM said he was in a bad place emotionally, prior to the trip and said the day out has helped him think so much more positively and to send you, his love.

I had a lot of fun yesterday, days ago, my mood was zero, but yesterday a lot of things changed. Thank you so much for that beautiful day. It will stay in my memory forever. The only thing missing from the trip was, I wanted to see one of London's beautiful stadiums, Thank you again. Big love for all of you.

Aseel says that today has been the best day of his life and he is the happiest possible. He wanted me to pass this on to everyone at ESFCA and their supporters. He is "Sooo thankful" and says, "We are the best"

Unaccompanied Asylum-Seeking Children London Visit

To all the kind people of the East Sussex Foster Care association.

On behalf of the UASC team and all our young people who attended our recent London Trip, I would like to say a big thank you for supporting this event.

This group of young people can often be overlooked or misunderstood so it was certainly refreshing that your organisation came on board.

For most of our young people London is a dream, a magical place they have seen pictures of and heard about but never thought they would ever get the chance to visit.

This trip not only fulfilled that dream but went a long way towards easing some of the anxieties and emotional difficulties they are all facing.

The young people mixed enthusiastically and respectfully with each other and with staff to make it a great day. It was so good to see a togetherness and witness a group of young people who were so supportive and respectful to each other. Some young people were seen to give coins to street homeless people along the way.

First was the early train journey in which any potential chaos was managed and all the young people were in good spirits.

The open top bus trip allowed them to see and take photos of all the major sights. As it was a hop on hop off service, we were able to disembark at Westminster Bridge where we were all able to stretch our legs and walk across Westminster Bridge to our next leg. One highlight was one of our young people doing a drum duet with a street entertainer on the bridge where people were gathered around dancing and cheering.

The river bus from Westminster to the Tower of London was a great way to see some other sights of London from the Thames and again was enjoyed in good spirit.

Then followed a walk past the tower of London and over the famous Tower Bridge and along the embankment to our lunch destination at Borough Market.

Here the young people were able to spend their lunch allowance on street food from all over the world. Something for everyone.

We then picked up the bus again and enjoyed more sightseeing eventually arriving back at Victoria station for our return train journey.

All in all, this was a good day for the young people and strengthened the relationships with those supporting them. For staff it was just so good to see the togetherness and enjoyment and smiles on all the young people faces.

Thank you once again.

Art Class



In October 2021, Friend of ESFCA Maureen Wells very kindly offered to run a monthly art class for our looked after children and our young people who foster. Maureen is a qualified art teacher who consults for various education authorities across the country and runs art classes for adults.

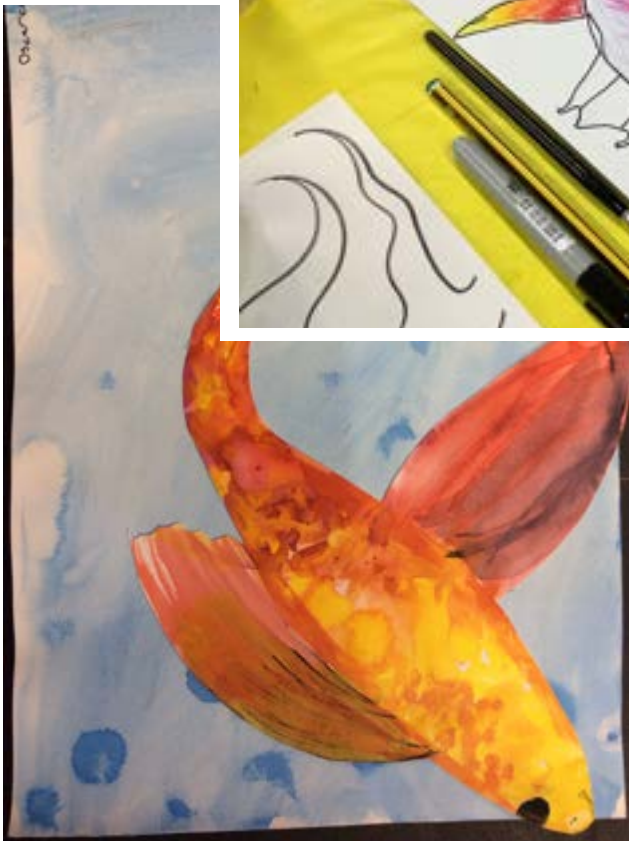
The art class meet once a month at Printers Playhouse (Eastbourne), who kindly let us use their performance space at a discounted rate.

Each month, Maureen themes the session and engages with the children in different styles of creating art. Along with the group discussions and demonstrations, Maureen always ensures each child has one to one time where she inspires the children to try a new style or technique in their artwork.

The initial art supplies were provided by ESFCA, and Lady Soroptimists (Lewes) and we would like to thank Maureen Wells, Printers Playhouse and Lady Soroptimists for their generous donation of time, workspace, and art materials.



Art Class



Beachy Head 10K



On Sunday 24th October, ESFCA volunteers once again braved the elements and marshalled the famous Beachy Head 10k. 13 volunteers took their positions over the course that covers a circular route sharing the starting line with the Marathon (kings' parade) heading along the South downs to Belle Tout Lighthouse. It then circles back along the stunning coastal route and returning the start/ finish line (Dukes Drive).

The 10K is a regular fundraising event for ESFCA and the volunteers always have a great time cheering on the runners as they cross the scenic countryside (whatever the weather). In return for supporting this event, ESFCA receives a donation to put towards future projects supporting our looked after children, young people who foster and foster families.



Baby & Toddler Group



In October, we saw ESFCA return to our baby & toddler group, allowing foster families looking after under 5's to meet and play in a safe & secure environment.

There are regular baby and toddler groups that carers can go to however, the nature of fostering means the carer may not look after the child for long before they move onto their next placement. These groups enable the carers to take part in a positive method of interaction with others in a similar position, regardless of the length of the placement.

The groups meet regularly and change location to embrace children from across East Sussex.

Horse Riding Project



The beginning of November saw the start of the horse-riding project. With a discount from the equestrian centre and a subsidy from ESFCA, foster families were able to buy vouchers for only £5.00 which entitled the child to ½ hour riding sessions.

The families then had the opportunity to trek through the East Sussex countryside at a time of their choosing throughout 2022. Over 40 families have participated so far, and we hope to repeat this offer again for 2023.



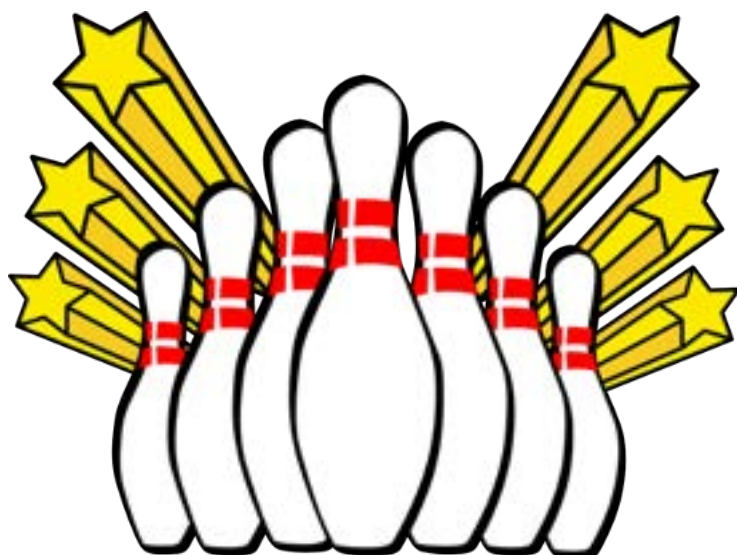
Relax, Recharge, Reflect



Relax, Recharge, Reflect is a project that allows foster carers to choose an activity that allows a few hours respite, some time with other foster carers and to help with their own personal wellbeing. There are currently three activities to choose from, an afternoon tea, a Chinese meal, or a spa day. Over 72 foster cares took part in these activities and there are plans to introduce options and opportunities over the next year.

ESFCA trustees and members would like to thank Hilliers, Happy Dragon (Pevensey) and Bannatyne's (Eastbourne)

Bowling



During November & February we took over 25 children for an evening of bowling at the Freedom Leisure bowling lanes (Hailsham). Once the children were placed into teams and allocated a lane, competition commenced. Snacks and refreshments were available for the children and the carers.

The evening was a great success, everybody had a fun time, and we look forward to offering more sessions during 2022/23.

Quiz night



In December our community partners at The Berwick Inn held a Christmas Quiz to help raise for future ESFCA Projects.

During the 2020 winter Covid restrictions, the team at The Berwick Inn stepped up to help us when they heard our Christmas Party had been cancelled. They offered us their outside pod (Glass dome/ Bubble) and garden area to ensure Father Christmas could still show up and distribute toys to our foster family children. This was a great success and the team at the Berwick wanted to do more to help us again.

The quiz was Christmas themed, and our host dressed accordingly as one of Santa's helpers, there were 6 rounds of 10 questions (each round) all based around Christmas jokes, songs, and general Christmas knowledge. The event was well attended, and we plan to hold another quiz in December 2022, if you would like to attend, please contact us to book your space.



Christmas Party



Sunday the 5th of December saw the return of the ESFCA Christmas party after cancelling the one in 2020 due to Covid. Over 70 children dressed up in their finest party clothes and once again joined us for an afternoon of festive fun and festive food.

Once again, Graham from Starlight Disco had everyone dancing (including some of the adults) and playing games with prizes for all the winners

This year also saw us introduce a sensory room for children with extra needs to enjoy.

Christmas can be a difficult time for looked after children and the ESFCA party provides a marvellous distraction for the children to relax and just enjoy themselves. The children took away fantastic memories, some even meeting up with siblings who may have been in different foster families, as well as other children from similar circumstances.

The party is self-funded by ESFCA, and the venue was kindly donated by the Kings Centre who we are truly thankful for their long-term and continued support.

We would like to take this opportunity to thank all the volunteers, community partnerships, friends, cake bakers and the foster families. Without their support, we would not be able to hold this incredibly important event.



For the 8th year running we were joined by the Lewes and Eastbourne Soroptimist's who, once again generously gave their time and donated presents for the children to wrap for their foster families.

The Soroptimist's clubs are part of an international organisation that aims to help women and girls at a local and international level in many ways. It has been running for nearly 100 years and, as well as helping like-minded people meet, they raise funds locally and support causes as well as giving women more of a voice through the four seats at the UN allocated to the Soroptimist's International Organisation.



More Radio- Toy Donation



Once again, our community partner More radio donated over 600 toys & gifts to ESFCA from its annual toy appeal.

Every year, More radio listeners donate toys and gifts to be distributed over the Christmas period to less fortunate children & families across the county.

This amazing donation played a very important part of our Christmas activities as we were able to ensure every child entering the care system during December had toys and gifts.

With help from social workers, the fostering service duty team, and our staff, we were able to deliver gifts and backpacks across the county where needed.

We also support the Through Care Team and their young adults who have children of their own. This is also with the help from our backpack project and the toys donated from More radio.

We would like to thank every listener of More Radio who generously donated to their Appeal, you will never really know the difference you have made to the children you have supported over the year.

On Friday 11th November 2023, More Radio will start this year's appeal making sure that less fortunate children across the county get a Christmas to remember. Please look for the donation points and remember, every gift no matter how large or small will make a difference.

EBMR (Santa Run)



For the fourth year running, EBMR – a group of motorcycle enthusiasts dressed as Santa, Rudolph & Elves from all over, rode across East Sussex to support local children across the county. The group rode their motorcycles from The Berwick Inn (after enjoying bacon rolls & Coffee) to the Eastbourne District Hospital. Once there, they donated toys & gifts to the children staying in hospital over the Christmas period. They spoke to and posed for photographs with hospital staff and then made a very generous donation to Susanne Beesley (Chair- ESFCA) of £385.00 on behalf of the association. They then took to the roads again heading off to Hastings and the Conquest Hospital to donate more toys & gifts.

David Oakenfold (member of Widows Sons Masonic Bikers Association) also presented a very generous donation from Widows Sons Masonic Bikers Association of £250.00 to help with costs of our annual pantomime trip in January.

ESFCA feel very privileged to have such great friends and community partners as the EBMR & Widows Sons Masonic Bikers Association and would like to thank them for their continued support.

The next Santa run is scheduled for Sunday 18th December 2022 and once again, our friends at the Berwick Inn are hosting the start. If you see them riding by, give them a wave and give them a cheer as they spread a little bit of Christmas spirit.



Pantomime



The end of 2021 and the beginning of 2022 saw Covid restrictions start to relax, which meant that the Pantomime was back. We managed to secure over 200 tickets for the Performance of Sleeping Beauty at the Devonshire Park Theatre (Eastbourne). We subsidised tickets for the foster families so they could enjoy the show at a much more affordable price.

Over 40 families joined us on the 2nd of January, and you could feel the excitement as they walked up to the theatre entrance to pick up their tickets. You could see the raised cheekbones peeking over the top of the facemasks which hinted at the beaming smiles and Cheshire cat grins hidden beneath.

We are very pleased to report that the noise levels our families created by laughing, cheering the heroes, booing the villains, and singing along with the cast was still extremely loud. The grown-ups really enjoy the opportunity to forget the world going on outside for a couple of hours and embrace the chaos that the pantomime brings.

The atmosphere in the theatre was electric and the performers were (once again) amazing, entralling the children as they got lost in the moment.

We received a few messages after the pantomime, all wanting to send their thanks to our community partners who continue to support them as well as ESFCA and make this event happen.



Our Visit to Goddards (Abinger Green)



East Sussex Foster Care Association were delighted to receive the amazing opportunity to take part in the Landmark's Trust 50 for free scheme, where 50 of The Landmark Trusts venues are offered free to charities and community groups. The venue chosen was the very stately Goddards set in the countryside in Abinger green, hidden in the Surrey Hills.

The date was set for the weekend of 11th March- 14th March and ESFCA Contacted the nominated the children and busily set about preparing for a magical weekend (with no access to TV or the internet-it would certainly be an adventure).



Early Friday evening Susanne (ESFCA Chair), Ann (ESFCA founder trustee) and Anja (ESFCA trustee) arrived at Goddards bringing Ruby, Hannah, Tyler, Freya, Neyaz & Willow (the dog) to enjoy a wonderful weekend away.

Upon arrival the house was explored, and bedrooms were claimed. Once everybody's luggage was put away the children set their own ground rules for the weekend (guided by the adults) and a decision was made (what was dinner going to be?) Once the Shepherd's pie was made and had started to bake in the oven the important art of hide and seek began.

On Saturday morning everybody was up before 9:00am and after a continental breakfast, ready to explore the woods around Abinger village. It was hard to decide who enjoyed the walk more, as the children loved to investigate the paths through the woods and found muddy puddles to jump over (or in) or Willow who enjoyed have the attention of 5 children (as well as the muddy puddles). One thing was certain, everybody enjoyed discovering the first signs of spring as Daffodils were found in and around the gardens of Goddards.



On the return to the house some of the party popped to the shops to stock up on supplies for the rest of the weekend and especially the banquet set for Saturday night. The remaining children baked Fairy cakes and made a start on the activity books supplied by "The landmark Trust". The workbooks were fantastic, and the children enjoyed answering the questions and completing the tasks set.

After lunch the children felt they were not dressed correctly for such a stately building, and everybody dressed up in a more regal style.





Everybody was surprised when they heard a knock on the front door and waiting to come in was Dame Jacqueline Wilson (ESFCA Patron) who had popped by to join the children for the afternoon and join in the fun.

Jacqueline joined in with the dressing up, helped the children with their baking (by licking the bowl) and gave everybody a signed copy of her book “the sleep over” as an amazing keepsake of the weekend.

Everybody then divided into two groups and started a Skittle competition; the adults joined the children in the competition and had a very noisy time as the wooden bowling balls clattered down the alley towards the skittles.

Some of the children used a recipe for treacle tart (found in the activity workbook) and started to bake while afternoon tea was prepared and enjoyed by everyone.



After the excitement of Saturday afternoon, the children continued into the early evening with more hide & seek and then prepared for the evening dinner. Goddards dining room and grand dining table was the ideal setting for a banquet fit for King’s & Queen’s and as everybody was dressed as royalty it was the perfect match.

Everybody played their part, Susanne became the “Governess”, Ann became “Lady Ann” and Anja became “Countess Anja”. The children remained in character (as they had all afternoon) and the evening festivity began.

Sunday morning came around quickly, and everybody was up (a little bit later) by 10:00am, breakfast was home-made pancakes and fresh fruit, and then another adventure was started as Willow led the way on a walk through the woods. Muddy puddles were found, and the garden explored, and rumours of a lone dinosaur started to circulate.

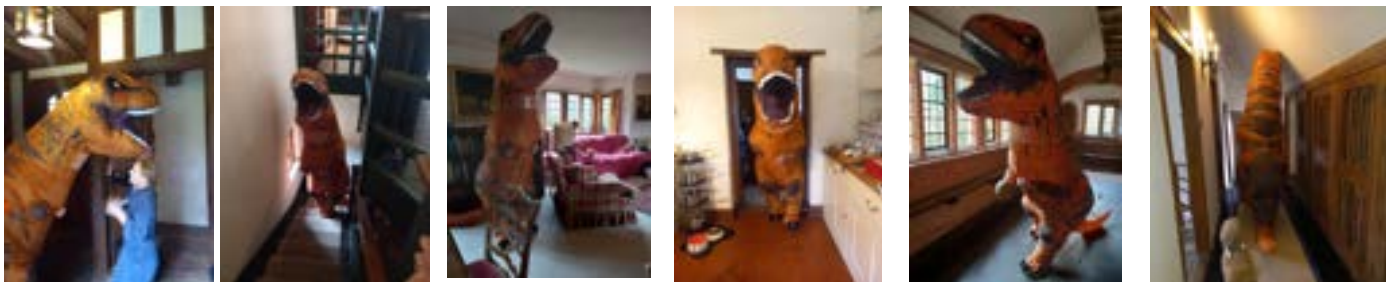
Once Willow had worn the children out it was time to take things a little bit slower and the activity workbooks kept everybody busy. The children that hadn’t made a treacle tart were given the opportunity along with the chance of making cookies.





No-one took the rumours of a lone dinosaur seriously, so it was a complete surprise when on Sunday afternoon the peace was shattered as a lone T-rex was seen wandering through the garden. Willow came to the rescue and chased the dinosaur through the garden followed by a few brave children, however their plan backfired when the T-rex decided to join everybody inside the house!

It turns out that a big dinosaur is terrible at hide & seek and was in fact Nigel (ESFCA-admin) in disguise. Nigel had known everyone would be dressing up from the past but took it to far as he turned up as a tyrannosaurus (too far back in time).



Sunday afternoon rolled into Sunday evening where a traditional roast dinner was prepared and everybody sat around the dining table sharing tales about the weekend, the adventures, the best hiding places and who was best at skittles.

After the dinner, bags started to get packed, belongings were gathered, and the Activity books were completed. Monday morning came around too soon and after breakfast the cars were packed, and Goddards played its last game of hide & seek of the weekend as everybody searched every room for items that may have been left behind.

Once everybody was ready to head back home (or school) they all agreed to meet up again soon to have another banquet and re -tell their stories from Goddards.



Backpack Project



Since 2019 our friends at the Department of Works & Pensions (DWP) have created a Christmas event where they donate backpacks full of gifts for children coming into the care system.

The bags are donated not only from the staff of the DWP, but from their families and friends across the country. Bags have been donated from as far as Scotland down to South Wales each containing toiletries, stationery, books, clothes, toys, and a soft cuddly toy.

We distribute the backpacks throughout the county ensuring they are available to all; the family support teams have crates containing backpacks suitable for all age ranges and genders. ESFCA trustees across the county also hold small collections of backpacks to support emergency placements. The remaining backpacks are held at the office where they are distributed to social workers directly upon request.

The Backpacks offer a fantastic opportunity for the children and carers to start their journey together on neutral ground. Exploring the bags together creates a useful diversion for a short time and the shared experience helps build their relationship. They also show the LAC that there are other adults thinking about them and sending a positive message so that they have some possessions of their own at this difficult time.



Financial Report

We continue to receive an annual grant of £20,000 from East Sussex County Council (ESCC) which enables us to employ staff and operate back-office services to support the IO Trustees running the charity.

Furthermore, we continue to receive an annual top up of restricted funds from ESCC for the advocacy fund held by ESFCA to support any foster carer facing an allegation. This fund provides independent support, at a most upsetting and worrying time, for all members of the Fostering family for as long as needed, which in some cases involve a lengthy and complex investigation.

In this financial year our membership was 264 households residing in the county of East Sussex.

Our reserves remain constant and at the same level as last year at £40,000. These reserves are held to provide a safety net for the provision of regular annual events such as holiday activities, PGL weekends, the Christmas party and Pantomime, should we be unsuccessful in receiving donations or grants for these cherished activities to proceed.

Should the Local Authority withdraw its annual grant, these reserves ensure we meet our obligations such as paying staff and associated costs including pension, NI and Tax, plus any outstanding creditors. In tandem, if the charity was wound up or placed into dormancy, we hold reserves to pay redundancy, accounting, audit and HMRC costs.

The association can access our reserve fund immediately should the need arise. We can also use the reserves to fund any larger capital need whilst applying for funding. One area we are researching is provision of storage for our equipment.

Where donations are received and the donor has asked for the money to be utilised on a specific project or a certain group of young people, we will honour that request and mark these funds restricted so they are only used for that purpose.

We continue to hold stock of new suitcases donated from Tripp luggage and other providers. These are available to Social Workers needing to move children in an emergency thus ensuring that their personal belongings are carefully packed and transported with the young person.

The lessening of Covid regulation enabled us to resume many aspects of our work, including fundraising activities. Our team were very creative in organising raffles, quiz nights, Christmas grottoes, marshalling events and collecting donations. This enabled a wide range of activities for Foster families from babies and toddlers to primary and secondary age children, young people who foster, unaccompanied asylum seekers, through care young people aged 16 to 25 and foster parents time out treats.

Lysette Grosvenor

Trustee and Treasurer

East Sussex Foster Care Association
Statement of financial activities (incorporating the
income and expenditure account) For the year ended
31 March 2022

	Notes	Unrestricted funds £	Restricted funds £	2022 Total £	2021 Total £
Incoming Resources					
Donations		3,446		3,446	2,912
Core funding		20,000		20,000	20,000
Advocacy support			2,697	2,697	2,920
Apprentice scheme grant					6,000
Fundraising - inc Bluebell walk		1,588		1,588	
PGL			10,430	10,430	9,770
Pantomime		2,329		2,329	
CiN youth			3,883	3,883	
Event contributions		1,630		1,630	
Interest		4		4	18
Total incoming resources		28,997	17,010	46,007	41,620
Resources expended					
Insurance		567		567	
General running expenses		4,079		4,079	771
Pantomime		3,900		3,900	
PGL			13,267	13,267	
Through care team		4,796		4,796	109
Events and projects		6,123		6,123	6,992
CiN youth			4,014	4,014	
Fundraising		134		134	
Intuitive Horse		480		480	1,440
Advocacy support			1,214	1,214	3,39S
Salaries & pensions		14,108		14,108	13,298
Christmas party		980		980	
Accountant's fees		1,644		1,644	1,640
Total outgoing resources		36,810	18,495	55,30S	27,64S
Net incoming/(outgoing) resources for the year/					
Net income/(expenditure) for the year		(7,813)	(1,485)	(9,298)	13,97S
Transfers		(131)	131		
Total funds brought forward		80,49S	24,747	105,242	91,267
Total resources		72,551	23,393	95,944	105,242

Message from Susanne

My sincere gratitude goes out to them all including Mark Thornborough (Vice Chair), Lysette Grosvenor (Treasurer), Ann Holder (MBE), Tina Henderson, Ru Petraitis-Williams, Anja Leeves, Sandra Maylam, Ruma, Smith and Christine Phillips. None of what we achieve would be possible without them.

We are extremely privileged to have such a dedicated team of people behind the scenes. A particular thank you must go to our Treasurer, Lysette Grosvenor, who spends so much of her time ensuring that our finances are kept in order. We will always be incredibly grateful to have the support of some amazing individuals whose experience and dedication to the goals of ESFCA do not go unnoticed. A huge thank you goes to our admin Nigel who works tirelessly behind the scenes to ensure that all that we do runs smoothly and always goes the extra mile for us.



The Bluebell walk was a wonderful way to begin our progression away from lockdown. Despite the limited capacity and closure of the cafe, we still marshalled the walk and received a £900 donation. We are very grateful for the continuous support and kindness of John McCutchen, Arlington Bluebell Walk owner. We look forward to everything running at full capacity in the future and we can continue the success of this generous opportunity.

Yet again, we extend our heartfelt thanks to More radio for their donation of toys. We hope our notion of giving back by sponsoring an award for the children of Sussex awards can display our gratitude for their assistance and extend our community presence.

Our friends the Eastbourne Motorcycle Ride Outs (EBMR) made another generous donation, and we enjoyed supporting the event. More generous funds were also donated to us from Widows and sons, and we are incredibly grateful for their ongoing support. EBMR also supported us in our other fundraisers and are always willing to get involved.

Sainsburys continue to be one of our steadfast supporters after being their charity of the year. We maintain a close relationship with them, and they gift us donations such as Easter eggs or vouchers.

I also want to recognise the very generous grant of £3,883 awarded to us through the Youth Investment Fund (administered by Children in Need). This allowed us to buy sports equipment, musical instruments, and a couple of gazebos.

The sports equipment will enhance the PGL residential trips and other activities through the year and you will soon see the Gazebos in use as support for our events as well as fundraising and awareness days. My thanks to Tina Henderson for leading this successful bid.



***“It takes
a village
to raise a
child”***

“It takes a village to raise a child” doesn’t really mean the village, but the community coming together. When the wider community engages, teaches, creates a healthy environment and acts as role model, it results in children learning important life-lessons, engaging in the community themselves and developing their confidence and self-esteem. This is reflected with our amazing supporters and volunteers who generously donate their time at our events and activities.

Thank You

**Alison Jeffery
Liz Rugg
Kathy Marriott
Teresa Lavelle-Hill
Sally Carnie
Adrian Sewell
Peter Richards
Mandy Lewis
Suzie Ives
Siobhan Edwards
Samantha Casey
Stacey Quanstrom
Donna Collins
Clare spencer
Tracey Millen
Sinead Roche
Phil Smith
Chelsea Walsh
Meshelle Carmody
Cllr Bob Bowdler
Cllr Colin Belsey
Cllr Keith Glazier
Paul Beesley
Andrea Thornborough
Gary Shirley
Peter Henderson**

**Dennis Holder
Stuart Buchan
Penny Smith
Kevin Williams
Roger Maylam
Nick Leeves
Mason Leeves
Kim Phillips
Bethany Beesley
Maya Beesley
Natalie Paul
John Darling
Lucy Chatterton
Julie Tabone
Jo Broocks
Fiona Emsey
Patricia Jackson
Liz Pucci
Sam Reilly
Kate Lewis
Kieran Henderson
Mark
Thornborough
Ella Vuillemeay
Bobbie Attew
Claire Woolf**

**Vera Gajic
Lara Khoury
Anja St Clair Jones
Louise Chalmers
Deborah Miarkowska
Alex Berry
Emily Berry
Margaret Woolf
Janice West
Lauren Hesmer
Donna Clayton
Graham Durey
Emily Wells
Julie Bell
Hugh Bell
Andrew Gordon
Jay Ivens
John Charles
George Carpenter
Jacqueline Ridge
Sue Hartley
Maureen Wells
Graham Tuthill**

**Everybody at the
Kings Centre**

And the many other volunteers that have helped over the year

Thank you for your continued support, without people like yourself and your colleagues stepping forward and aiding the association, these critical projects would not be able to continue.

Thank You



**MEMBERS
& VOLUNTEERS**



**Eastbourne
&
Hampden Park**



**VISIT
EASTBOURNE**



**Windmill
Hill**

Lewes



Lewes

Eastbourne

More
RADIO
Mid Sussex

TRIPP



EBMR

Eastbourne Motorcycle
Rideout.

THE BERWICK INN
FREE HOUSE • PUB • CAFÉ • DINING



MAKE IT REEL POSTER GALLERY



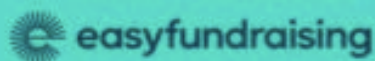
How you can support us.



SMILE.AMAZON.CO.UK

Support East Sussex Foster Care Association by shopping at smile.amazon.co.uk.

When you shop at smile.amazon.co.uk, Amazon will donate to East Sussex Foster Care Association....

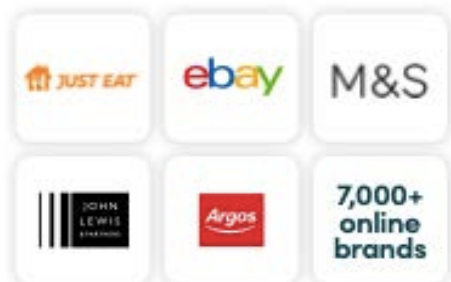


You shop, brands donate to

East Sussex Foster Care Association

It won't cost you any extra!

Search for us on easyfundraising.org.uk



www.esfca.co.uk



Charity number: 1092668
Company number: 04216137

East Sussex Foster Care Association
Directors' report and financial statements
For the year ended 31 March 2022

Contents

	Page
Company information	1
Trustee's report	2 - 10
Independent examiners' report	11
Statement of financial activities	12
Balance sheet	13-14
Notes to the financial statements	15-17

Charity number 1092668

Company registration number 4216137

Registered office 4th Floor St Mark's House
14 Upperton Road
Eastbourne
East Sussex
BN21 1EP

Independent Examiner Dominic Hill Associates Limited
Archer House
Britland Estate
Northbourne Road
Eastbourne
East Sussex
BN22 8PW

The directors present their report and the financial statements for the year ended 31 March 2022.

Structure, governance and management

The charity is an incorporated association governed by its memorandum and articles of association, together with its constitution.

The following persons served as directors/trustees during the year;

Ms S Beesley BA (hons) - Chair
Mrs A H D Holder MBE
Mr M Thornborough
Ms T M Henderson
Ms L Grosvenor – Treasurer
Mrs A Leeves
Mrs S Maylam
Mrs R Petraitis-Williams
Ms R Smith
Ms A Buchan – 1 April 2021 to 2 January 2022
Ms C Phillips

Trustees are appointed at the AGM with there being a minimum of three and a maximum of twelve. At the AGM one third of the trustees must stand down, often the longest serving trustees stand down first, but may choose to stand for re-election. All trustees must be members of East Sussex Foster Care Association and members can nominate themselves for election.

Objectives of the charity

The objectives of East Sussex Foster Care Association as set out in the Memorandum of Association are to promote all or any charitable purposes for the benefit of the community mainly but not exclusively within the County of East Sussex and in particular the advancement of the education of the public in matters relating to substitute care. In particular the education, training and support of foster carers and their families, the relief of Looked After Children, their Carers and their Carers' families by providing facilities and services in the interests of social welfare with a view to improving their conditions of life.

The Association is to support East Sussex Foster Carers and their families in their efforts to achieve the best possible outcomes for the children in their care by working in partnership with all appropriate statutory and voluntary agencies. It undertakes this task by offering a range of events, advocacy, training and support for the both the families and the children they care for. Its membership is comprised of East Sussex Local Authority registered Foster Carers and the managing group is formed by elected Trustees/Directors' from within that membership.

Activities, achievements and performance

ESFCA is proud to help different groups of young people that operate within the care system.

Young People Who Foster (YPWF)

These are the biological and adopted children of foster families who share their home and parents with fostered children. They make lots of sacrifices to support looked after children, and there is rarely a complaint. This group allows them to have voice and an opportunity to share their experiences inside a safe environment.

Children in Care Council (CICC)

This council represents the looked after children in foster families. Children of different ages sit on the council and help provide a voice for those that need it.

Through Care Team

These are the young adults leaving the care system who need support getting their start in life. Aged between 16-25 the young people are supported by a specialist team of social workers who also provide financial, legal and wellbeing support.

Make It Reel project

East Sussex Foster Care Association has a special pot of money in a restricted fund available to support LAC. The money has been donated from The Reel Poster Company and they would like the money to go directly to benefit LAC where a small amount of money could make a real difference.

Lobbying Government & Local Authorities

Our Trustees are actively engaged with other organisations in networking, debating, promoting, and raising the profile of Foster Carers in East Sussex. We lobby Government departments and attend any meetings or debates that enable us to speak up for our members and our Looked After Children (LAC).

Independent allegation advice & support

We continue to receive funds from East Sussex County Council (ESCC) as an annual top up which is held in a restricted fund. This Allegations fund is used to buy in independent support as required to assist any of our member foster carers who may be subject to an allegation of concerns around standards of care. These investigations can be complex and lengthy and can feel very isolating to a foster family as they are unable to discuss many of the issues with others due to confidentiality.

Monthly Fostering Surgeries with Heads of Department

ESFCA hold monthly Surgeries one evening a month whereby Foster Carers can bring to the table a difficult, complex, or issue that needs a fast-track resolution from senior managers in Children's and Fostering Services. A trustee will attend the meeting to offer support to the Foster Carer in presenting their problem. This can really help all parties to find a way forward or air complaints in a face to face and professional manner.

Achievements 2021-2022

Book Club- (Started Feb 2021)

At the end of February 2021 (during the Covid lockdown) ESFCA started an on-line Book Club. The Club was attended by 11 children and hosted by Susanne Beesley (Chair- ESFCA). The Books were donated by Much Ado Books- Prospero project.

Easter Eggs- 4th April 2022 (Easter break)

During the Easter holiday season ESFCA paid for & donated 197 Easter eggs to the Through Care Team (the department looking after young adults leaving the care system). The eggs were given to the young adults living in supported lodgings or on their own. ESFCA made the donation from their own funds.

During the Easter holiday season ESFCA received a donation of 50 Easter Eggs from Sainsbury's (Hampden Park). The long-term community partnership with Sainsbury's continues to grow stronger, and this year 50 children under the ESFCA umbrella received chocolate treats. ESFCA thanks Sainsburys for its generous donation and continued support.

Bluebell Walk- 28th April 4th May & 5th May

During the spring of 2021 the covid restrictions started to relax, which allowed the Arlington Bluebell Walk to operate (though at a reduced level). Another strong community partner, the Arlington Bluebell Walk is one of the most popular events of the ESFCA calendar, and it was great to be back. This year refreshments were not made available (due to the limited restrictions), however ESFCA volunteers marshalled the Bluebell walk for visitors and received a £900.00 donation.

Intuitive Horse- May

During May ESFCA were asked to support a request for a child to be accepted onto the Intuitive Horse Project. The project involves Looked After Children attending 6 sessions individually to help the young person, depending on their needs, explore confidence building, emotional awareness, impulse control, building trust in relationships, learning how to calm themselves, developing empathy and overcoming fears. ESFCA was very happy to support this activity and sponsor the request.

EID celebration 12th May

ESFCA were approached by Unaccompanied Asylum-Seeking Children (UASC) – part of the Through Care Team, to help provide a feast to celebrate Eid (Eid is a feast that celebrates the end of Ramadan). 24 young adults (children) attended the feast, and it was held in a local park in Eastbourne. ESFCA donated £100 which covered the cost of the food.

PGL Day camp 2nd, 4th June 30th, July 4th & 6th August.

The lifting of restrictions allowed us to run 5 day-camps at the PGL Windmill Hill activity centre. Normally ESFCA would run 2 residential weekends at PGL activity centres across the south taking 25 children and 10 adults each time. As there were still no residential bookings allowed at the time of creating the event, the decision was made to create 5 activity days and invite more children. Giant swing, Zip Wire, Obstacle course & canoeing were on offer and the children had a great time. Over 130 looked after children attended the days accompanied by over 50 adults (social workers & foster carers) joined them. The cost of all 5 days was paid for from the 3-year £30,000 grant provided by Children in Need.

Bates Farm – 30th June

Bates farm is the location of the Arlington Bluebell walk, and from May until October is also the home of Bates Garden. This garden is attached to the residence of John McCutchan (who runs the Bluebell Walk), his Wife (Carolyn) was an award-winning horticulturist, and the decision was made to open her garden in her memory and to raise funds for local hospital. Volunteers from ESFCA ran the refreshments on 30th June and together with a small donation from Bates farm made £104.

Allegations Review – 5th July

After the complete revision of the foster carer Allegations support document during 2020, it was decided to revisit the document and add an addendum to the new documentation. Susanne Beesley (Chair- ESFCA), Tina Henderson (Founder trustee- ESFCA), Adrian Sewell (Fostering Service-operations manager) & Peter Richards (Fostering Service operations Manager).

More Radio – Child of Sussex Awards- 15th July

The 15th of July saw the launch of the More Radio Child of Sussex Awards. ESFCA once again took the opportunity to sponsor the Gold Award. More Radio listeners are asked to nominate children that deserve recognition in a host of categories, the Gold Award allows an extra special to be nominated, but whose story does not fit these existing categories. Due to covid restrictions the Award ceremony was postponed until the summer 2022.

Through Care Team- Go Ape – 4th August

The Go ape treetop challenge was the event that brought over 40 young adults together for the first time in over a year. The Through Care team organised the event and ESFCA was very happy sponsor the activity. The Young adults accompanied by support staff, took to the treetops above Bedgebury national Pinetum where they engaged with each other, worked as a team, and had fun in the process.

Computer donation – 13th August

ESFCA were incredibly grateful to receive six computers (refurbished) from the Sussex estate agent Phillip Mann. The donation was arranged by Chris Thornton (ex- treasurer ESFCA), who also refurbished the computers for the association. The computers were donated to foster families who needed the extra support for home schooling. ESFCA wishes to thank Phillip Mann for their generous gift and to Chris Thornton for helping to facilitate the donation.

Financial Donation – 7th September

ESFCA were once again overjoyed to receive another donation from their Community Partner Sainsbury's (Eastbourne). Thanks to their fund raising the Eastbourne Sainsburys team donated £893.00. Thank you again Sainsbury's.

Soapbox Race- 26th September

ESFCA were thrilled to take part in the inaugural Soap box race, held at the base of the Southdown's along Kings Parade. Though not racing this year, volunteers helped marshal the course and kept closed roads clear for emergency vehicles (if needed). This activity earned the association a donation of £100.00

UASC London trip

ESFCA was proud to support the UASC team and helped send 42 children (young adults) & 7 adults (support) to London. The trips' goal was to allow the children (young adults) to visit the key tourist areas (Houses of Parliament, Buckingham Palace, etc.) and embrace the history and pageantry of the country they have travelled to. The trip was funded by ESFCA and included travel, entry fees, food & drink.

Art Class – 16th October

Friend of ESFCA (and Lady Soroptimist) Maureen Wells very kindly offered to run a monthly art class for our children. Maureen is a qualified art teacher and consults for various education authorities across the country. On Saturday 16th October we held our first class at Printers Playhouse (Eastbourne), who gave us a room to use at a reduced rate. 11 children attended (each paying £5.00-per class to help with the running costs). Art supplies were provided by ESFCA & Lady Soroptimists – Lewes.

Beachy Head 10K – 24th October

On Sunday 24th October ESFCA Volunteers once again braved the elements and marshalled the famous Beachy Head 10k race. 13 volunteers took their positions and made sure all the runners taking part got back to the finish safely. Over 453 runners completed the race and ESFCA received a £200.00 donation from Eastbourne Borough Council Events Team for their support.

Baby & Toddler Group – 22nd October

Friday 22nd October saw ESFCA return to running a baby & toddler group, allowing foster families looking after under 5's to meet and play in a safe & secure environment. Over 15 foster families signed up to join our group, which was funded by ESFCA.

Widows Sons Masonic Bikers Association - 1st November

Once again, the Widows Sons Masonic Bikers Association were incredibly generous and donated £250.00 to help with the costs of our annual pantomime trip.

Horse Riding Project – 2nd November

The beginning of November saw the start of the Horse-Riding Project. ESFCA in partnership with the Polegate Equestrian Centre. With a discount from the equestrian centre and a subsidy from ESFCA, foster families were able to buy vouchers for only £5.00 a session to allow their looked after children to take part in ½ hour riding sessions at their own choice throughout the year (2021-2022). Over 41 children took part in the project.

RRR- Afternoon Tea – 3rd November

Reflect, Recharge and Relax is a project that allows foster carers to choose one activity and receive a few hours respite. Wednesday 3rd saw the first event take place as over 20 foster carers attended the afternoon tea held at Hilliers Garden Centre (Hailsham). The RRR project is funded by ESFCA and appreciates the support of Hilliers and the discount they generously gave the association.

RRR- Chinese Meal – 9th November

The second event of the RRR project was held at the Happy Dragon Chinese restaurant (Pevensey) where foster carers enjoyed a meal and the company of other carers. Over 34 carers attended the event and ESFCA thanks everyone at the Happy Dragon and for the discount they gave to the association.

AGM – 15th November

ESFCA held the Annual General Meeting on Monday 15th November, the event was attended by trustees, patron's, members, and managers from East Sussex children's services.

Bowling - 26th November

11 Children enjoyed an evening of bowling at the Freedom Leisure bowling lanes (Hailsham). Two lanes were booked, and the children played two games in teams. Snacks and refreshments were also on offer for the children & carers attending. ESFCA thanks everyone at Freedom Leisure for their hospitality and the discount they gave the association.

Christmas Party – 5th December

Sunday the 5th of Dec saw the return of the ESFCA Christmas party after cancelling the 2020 party due to Covid. There was a disco and party games throughout the afternoon and once again we were joined by the lady soroptimists who generously gave up their time and donated gifts for the children to give their carers. Father Christmas made an early appearance for all the children. This year also saw ESFCA introduce a sensory room for children with extra needs to enjoy. The party was self-funded by ESFCA, and the room/s were kindly donated for our use by the Kings Centre who we are truly thankful for their long-term and continued support. Over 70 children attended this year's party.

Quiz Night – 8th December

ESFCA's community partners at the Berwick Inn held a Christmas Quiz to raise funds for future ESFCA projects. Six teams took part and raised £81.00 in entrance fees with a further £117.58 raised by a raffle during the quiz.

More Radio – 10th December

More Radio donated over 600 toys & gifts to ESFCA from its annual Toy donation appeal (Every year More radio listeners donate toys & gifts to be distributed over the Christmas period to children & families). ESFCA distributed toys & gifts to children entering the care system over the month of December and beginning of January, toys were also distributed to the children of young adults under the care of the Through Care Team.

St Luke's Christmas Fayre – 11th December

ESFCA were invited to take part in the St Luke's Christmas Fayre, and we ran a cakes sale & bric-a-brac stall alongside a Santa's Grotto. The event allowed ESFCA to raise funds and awareness. Over £117.00 was raised at the event.

Eastbourne Motorcycle Rideout (Santa Run) – 12th December

For the fourth year running EBMR – a group of motorcycle enthusiasts from across the county, rode across East Sussex to support Local Children across the county. The group rode their motorcycles from The Berwick Inn (after enjoying bacon rolls & Coffee to Eastbourne District Hospital. They donated toys & gifts to the children staying in Hospital over the Christmas period. They also donated to ESFCA and posed for photographs with hospital staff & ESFCA Chair Susanne Beesley. After this brief stop, they then continued onto Hastings Conquest Hospital. Some were dressed as Santa Claus (or Mrs Claus) and elves £385.00.

Backpack Donation- December 2021

During the final weeks of December ESFCA received a donation of drawstring back packs each one individually filled with gifts (notebooks, pens/ pencils, socks, pyjamas, toiletries, and toys) for children coming into the care system over the next year. Friends from the DWP (Department of Works and Pensions), their families & friends (across the country) donated over 100 back packs.

Pantomime - 2nd January 2022

The end of 2021 and the beginning of 2022 saw Covid restrictions become more relaxed. This allowed Pantomimes to take place across the country. ESFCA secured over 200 tickets for Sleeping Beauty at the Devonshire Park Theatre in Eastbourne. ESFCA subsidised tickets for the foster families so they could enjoy the show at a much more affordable price.

RRR – Spa Day – 20th January 2022

Over 19 ESFCA members took part in the final offering of the Reflect, Recharge, Relax project, which was a spa day held at the Eastbourne Bannatyne health club. The event was run between 09:30 – 24:30, sitting nicely between the school run, allowing all the members taking part to enjoy the day. The full use of the club's facilities was made available, and lunch was also included. ESFCA sponsored the day and is once again thankful for the continued support and their community partnership.

Corporate Parent Panel – 21st January 2022

ESFCA Chair (Susanne Beesley) & Treasurer (Lysette Grosvenor) presented at the East Sussex County Council- Corporate Parenting Panel. The presentation described the work ESFCA accomplishes on behalf of its members and the relationships it has built with its community partners as well as the working relationship it has developed with ESCE.

Bowling – 16th February 2022

14 Children enjoyed an evening of bowling at the Freedom Leisure bowling lanes (Hailsham). Two lanes were booked, and the children played two games in teams. Snacks and refreshments were also on offer for the children & carers attending. ESFCA thanks everyone at Freedom Leisure for their hospitality and the discount they gave the association.

Children in Need Youth Fund – 2nd February 2022

Trustees were successful in a fundraising bid with Children in Need levelling up grant. The grant has provided over £2000 for sports equipment & outside games, £1500 for two gazebos to be used at events and for marketing purposes and over £500 for musical equipment.

Landmark Trust (Goddards)- 11th March-14th March

ESFCA was successful in a request with “The Landmark trust” and was granted a weekend stay at the “Goddard’s” house in the Surrey Hills. Six children and three trustees spent the weekend enjoying walks, cooking, baking, playing games and dressing up. The highlight of the weekend was a visit from ESFCA patron Jacqueline Wilson who arrived to join in the fun. ESFCA would like to thank “The Landmark Trust” for their very generous donation.

Financial review

We continue to receive an annual grant of £20,000 from East Sussex County Council (ESCC) which enables us to employ staff and operate back office services to support the 10 Trustees running the charity.

Furthermore, we continue to receive an annual top up of restricted funds from ESCC for the advocacy fund held by ESFCA to support any foster carer facing an allegation. This fund provides independent support, at a most upsetting and worrying time, for all members of the Fostering family for as long as needed, which can in some cases involve a lengthy and complex investigation.

In this financial year our membership was 264 households residing in the county of East Sussex.

Our reserves remain constant and at the same level as last year at £40,000. These reserves are held to provide a safety net for the provision of regular annual events such as holiday activities, PGL weekends, the Christmas party and Pantomime, should we be unsuccessful in receiving donations or grants for these cherished activities to proceed.

Should the Local Authority withdraw its annual grant, these reserves ensure we meet our obligations such as paying staff and associated costs including pension, NI and Tax, plus any outstanding creditors. In tandem, if the charity was wound up or placed into dormancy, we hold reserves to pay redundancy, accounting, audit and HMRC costs.

The association can access our reserve fund immediately should the need arise. We can also use the reserves to fund any larger capital need whilst applying for funding. One area we are researching is provision of storage for our equipment.

Where donations are received and the donor has asked for the money to be utilised on a specific project or a certain group of young people, we will honour that request and mark these funds restricted so they are only used for that purpose.

We continue to hold stock of new suitcases donated from Tripp luggage and other providers. These are available to Social Workers needing to move children in an emergency thus ensuring that their personal belongings are carefully packed and transported with the young person.

The lessening of Covid regulation enabled us to resume many aspects of our work, including fundraising activities. Our team were very creative in organising raffles, quiz nights, Christmas grottoes, marshalling events and collecting donations. This enabled a wide range of activities for Foster families from babies and toddlers to primary and secondary age children, young people who foster, unaccompanied asylum seekers, through care young people aged 16 to 25 and foster parents time out treats.

Please see the activities and achievements report for full list.

Chairperson's Review

Dear All,

After two years of lockdown and limited human interaction, we have at last begun to emerge from what was for many was a very trying time. Thanks to our dedicated team and its loyal supporters (including the ESCC), we have begun to restart our favourite events, for the children and families in East Sussex. Despite the many changes and challenges, we have had to face over this time, our core values have not changed.

Looking back at the most recent financial year from April 2021 to March 2022, we are delighted to say that funds have been stable and our team have remained predominantly unchanged. We did however, receive the extremely sad news that Anne Buchan, one of our much loved trustees had passed away early in the New Year. Anne was a real champion for all children within fostering families but had a particular heart for Children who foster. She was a valued member of our team, and her presence will be greatly missed.

My sincere gratitude goes out to them all including Mark Thornborough (Vice Chair), Lysette Grosvenor (Treasurer), Ann Holder (MBE), Tina Henderson, Ru Petraitis-Williams, Anja Leeves, Sandra Maylam, Ruma Smith and Christine Phillips. Needless to say, none of what we achieve would be possible without them. We are extremely privileged to have such a dedicated team of people behind the scenes.

A particular thank you must go to our Treasurer, Lysette Grosvenor, who spends so much of her time ensuring that our financials are kept in order. We will always be incredibly grateful to have the support of some amazing individuals whose experience and dedication to the goals of ESFCA do not go unnoticed. A huge thank you goes to our admin Nigel who works tirelessly behind the scenes to ensure that all that we do runs smoothly and always goes the extra mile for us.

Funds

The Bluebell walk was actually a wonderful way to begin our progression away from lockdown. Despite the limited capacity and closure of the café, we still marshalled the walk and received a £900 donation. We are very grateful for the continuous support and kindness of John McCutchen Arlington Bluebell Walk owner. We look forward to everything running at full capacity in the future and we can continue the success of this generous opportunity.

Yet again, we extend our heartfelt thanks to More radio for their donation of toys. We hope our notion of giving back by sponsoring an award for the children of Sussex awards can display our gratitude for their assistance and well as extend our community presence.

Our friends the Eastbourne Motorcycle Ride Outs (EBMR) made another generous donation and we enjoyed supporting the event. More generous funds were also donated to us from Widows and sons and we are incredibly grateful for their ongoing support. EBMR also supported us in our other fundraisers and are always willing to get involved.

Sainsbury's continue to be one of our steadfast supporters after being their charity of the year. We maintain a close relationship with them and they gift us with donations such as easter eggs or vouchers.

This financial year has involved beginning our events again such as PGL, Christmas party, Jamie's Farm, the Pantomime and others. We soon fell back into the swing of things with the help of our admin team to get things running smoothly. We take immense pleasure in being able to witness the positive enrichment experienced by all involved.

Our PGL trips were thankfully enabled through our grant from Children in Need. PGL is one of our most sought-after events for children. We usually have the facilities to take three groups of children away a year. This year, due to restrictions not allowing residential, we decided to plan 5-day trips to Windmill Hill which allowed us to take 130 children to enjoy the activities instead. I am so grateful for the dedicated duo we have in Tina Henderson and Mark Thornborough, who take on the immense task of organising and delivering PGL and do such an amazing job.

The Christmas Party brings together our community in the festive season and creates shared memories year upon year for our children. The Lady Soroptimists kindly support this event, as they have for the last 7+ years, by facilitating present wrapping with the children. It is one of our events that is enjoyed by all, and we are thankful to the Kings Centre for providing the space to do this under their charity initiative. In addition to this, the Pantomime also provides our families with a perfect opportunity to spend some quality time together as we were able to give them discounted tickets to enjoy a show alongside other fostering families.

The More Radio Child of Sussex Awards is an event ESFCA sponsor, as our way of giving back to our community and enriching our partnership. Through the generosity of More Radio listeners the radio distributed hundreds of toys over the years to our cause and they are highly appreciated. As the ceremony was postponed this year, it has been moved to 2022/23 and we look forward to participating in this to present an award to a well-deserving individual.

After our first full year of limited restrictions and most things returning to normal, ESFCA have adapted well and taken things in their stride. Our trustees have worked as hard as ever to give our families the support and enjoyment they deserve after such trying couple of years. We are so thankful for all our supporters who continue to offer their backing so that we can extend this support to the deserving children and families within our fostering community.



Kind Regards,
Susanne Beesley
Chairperson of ESFCA

East Sussex Foster Care Association

Independent examiner's report to the trustees on the unaudited financial statements of East Sussex Foster Care Association.

I report on the accounts of East Sussex Foster Care Association for the year ended 31 March 2022 set out on pages 2 to 17.

Respective responsibilities of trustees and independent examiner

The charity's trustees (who are also the directors of the company for purposes of company law) are responsible for the preparation of the accounts. The trustees consider that an audit is not required for this year under section 144(2) of the Charities Act 2011 (the 2011 Act), and that an independent examination is needed. I am qualified to undertake the examination by being a qualified member of the Institute of Chartered Accountants in England and Wales.

Having satisfied myself that the charity is not subject to audit under company law and is eligible for independent examination, it is my responsibility to:

- Examine the accounts under section 145 of the 2011 Act
- To follow the procedures laid down in the general directions given by the Charity Commission under section 145(5)(b) of the 2011 Act and
- To state whether particular matters have come to my attention

Basis of independent examiner's statement

My examination was carried out in accordance with the General Directions given by the Charity Commission. An examination includes a review of the accounting records kept by the charity and a comparison of the accounts presented with those records. It also includes consideration of any unusual items or disclosures in the accounts, and seeking explanations from you as trustees concerning any such matters. The procedures undertaken do not provide all the evidence that would be required in an audit and consequently no opinion is given as to whether the accounts present a 'true and fair view' and the report is limited to those matters set out in the statement below.

Independent examiner's statement

In connection with my examination, no matter has come to my attention:

1. which gives me reasonable cause to believe that in any material respect the requirements:
 - to keep proper accounting records in accordance with section 386 of the Companies Act 2006; and
 - to prepare accounts which accord with the accounting records, comply with the accounting requirements of section 396 of the Companies Act 2006 and with the methods and principles of the Statement of Recommended Practice: Accounting and Reporting by Charities have not been met; or
2. to which, in my opinion, attention should be drawn in order to enable a proper understanding of the accounts to be reached.

Peter D Hill FCA

On Behalf Of

Dominic Hill Associates Limited

Archer House

Britland Estate

Northbourne Road

Eastbourne

East Sussex

BN22 8PW

East Sussex Foster Care Association

Statement of financial activities (incorporating the income and expenditure account)

For the year ended 31 March 2022

	Notes	Unrestricted funds £	Restricted funds £	2022 Total £	2021 Total £
Incoming Resources					
Donations		3,446	-	3,446	2,912
Core funding		20,000	-	20,000	20,000
Advocacy support		-	2,697	2,697	2,920
Apprentice scheme grant		-	-	-	6,000
Fundraising – inc Bluebell walk		1,588	-	1,588	-
PGL		-	10,430	10,430	9,770
Pantomime		2,329	-	2,329	-
CiN youth		-	3,883	3,883	-
Event contributions		1,630	-	1,630	-
Interest		4	-	4	18
Total incoming resources		28,997	17,010	46,007	41,620
Resources expended					
Insurance		567	-	567	-
General running expenses		4,079	-	4,079	771
Pantomime		3,900	-	3,900	-
PGL		-	13,267	13,267	-
Through care team		4,796	-	4,796	109
Events and projects		6,123	-	6,123	6,992
CiN youth		-	4,014	4,014	-
Fundraising		134	-	134	-
Intuitive Horse		480	-	480	1,440
Advocacy support		-	1,214	1,214	3,395
Salaries & pensions		14,108	-	14,108	13,298
Christmas party		980	-	980	-
Accountants fees		1,644	-	1,644	1,640
Total outgoing resources		36,810	18,495	55,305	27,645
Net incoming/(outgoing) resources for the year/ Net income/(expenditure) for the year		(7,813)	(1,485)	(9,298)	13,975
Transfers		(131)	131	-	-
Total funds brought forward		80,495	24,747	105,242	91,267
Total resources		72,551	23,393	95,944	105,242

East Sussex Foster Care Association

Balance sheet

As at 31 March 2022

	Notes	£	2022	£	£	2021	£
Fixed assets							
Tangible assets				-			-
Current assets							
Cash at bank and in hand			97,285			106,538	
Debtors & prepayments	2		33			87	
			<u>97,318</u>			<u>106,625</u>	
Creditors: amounts falling due within one year	3		(1,374)			(1,383)	
				95,944			105,242
Net Assets				<u>95,944</u>			<u>105,242</u>
Funds							
Unrestricted funds	4			72,551			80,495
Restricted funds	5			23,393			24,747
Total Funds	6			<u>95,944</u>			<u>105,242</u>

East Sussex Foster Care Association

Balance sheet (continued)

Directors statements required by the Companies Act 2006 for the year ended 31 March 2022

In approving these financial statements as trustees of the company we hereby confirm:

(a) that for the year stated above the company was entitled to the exemption conferred by section 477 of the Companies Act 2006 ;

(b) that no notice has been deposited at the registered office of the company pursuant to section 476 of the Companies Act 2006 requesting that an audit be conducted for the year ended 31 March 2022.

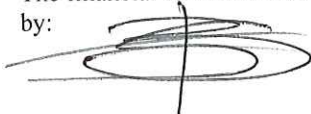
(c) that we acknowledge our responsibilities for:

(1) ensuring that the company keeps proper accounting records which comply with section 386 and 387 of the Companies Act 2006, and

(2) preparing financial statements which give a true and fair view of the state of affairs of the company as at the end of the financial year and of its profit or loss for the year then ended in accordance with the requirements of sections 394 and 395, and which otherwise comply with the provisions of the Companies Act relating to financial statements, so far as applicable to the company.

These financial statements are prepared in accordance with the provisions of Section 1A 'Small Entities' of Financial Reporting Standard 102 'The Reporting Standard applicable in the UK and Republic of Ireland' and the Companies Act 2006. The financial statements have been prepared under the historical cost convention.

The financial statements were approved by the board on 12/09/2022 and signed on its behalf by:



Ms S Beesley
Director and chair of trustees

East Sussex Foster Care Association

Notes to financial statements for the year ended 31 March 2022

1. Accounting policies

The principal accounting policies are summarised below. The accounting policies have been applied consistently throughout the year and the preceding year.

1.1. Basis of accounting

The financial statements are prepared in accordance with the provisions of Section 1A 'Small Entities' of Financial Reporting Standard 102 'The Financial Reporting Standard applicable in the UK and Republic of Ireland' and the Companies Act 2006. The financial statements have been prepared under the historical cost convention.

1.2. Going concern

The trustees are of the view that the charity is a going concern and will continue for the foreseeable future.

1.3. Incoming resources

All incoming resources are included in the statement of financial activities when the charity is entitled to the income and the amount can be quantified with reasonable accuracy. The following specific policies are applied to particular categories of income:

Voluntary income is received by way of donations and gifts and is included in full in the statement of financial activities when receivable. The value of services provided by volunteers has not been included.

Grants and incoming resources from charitable activities are recognised in full in the statement of financial activities in the year in which they are receivable.

Income from investments is included in the year in which it is receivable.

1.3. Resources expended

Expenditure is recognised on an accrual basis as a liability is incurred. Expenditure includes any VAT, which cannot be fully recovered, and is reported as part of the expenditure to which it relates.

1.4. Tangible fixed assets and depreciation

Expenditure on individual items of office and computer equipment costing less than £5,000 is written off in the period in which the expenditure incurred.

1.5. Fund accounting

Unrestricted funds are available to spend on activities that further any of the purposes of charity. Restricted funds are specifically for particular areas and projects undertaken by the charity.

1.6. Average number of employees

The average number of employees during the year was 1. There are also a number of volunteer support workers.

East Sussex Foster Care Association

Notes to financial statements for the year ended 31 March 2022

2. Debtors and Prepayments

	2022 £	2021 £
PAYE debtor	33	87
Prepayments	-	-
Accrued income	-	-
Overpaid bank charges	-	-
	<u>33</u>	<u>87</u>

3. Creditors: amounts falling due within one year

	2022 £	2021 £
Accountancy	1,374	1,383
	<u>1,374</u>	<u>1,383</u>

4. Unrestricted funds

	Balance at 01-Apr-21 £	Incoming	Outgoing	Transfers	Balance at 31-Mar-22
General fund	76,330	8,997	16,412	(3,637)	72,551
Designated fund	4,165	20,000	20,397	(3,768)	-
	<u>80,495</u>	<u>28,997</u>	<u>36,810</u>	<u>(131)</u>	<u>72,551</u>

East Sussex Foster Care Association

Notes to financial statements for the year ended 31 March 2022

5. Restricted funds

	Balance at 01-Apr-21 £	Incoming	Outgoing	Transfers	Balance at 31-Mar-22
Advocacy support	6,605	2,697	1,214	-	8,088
CiN PGL events	9,770	10,430	13,267	-	6,933
Apprenticeship scheme	6,000	-	-	-	6,000
Keep it Reel	2,372	-	-	-	2,372
CiN youth	-	3,883	4,014	131	-
	<u>24,747</u>	<u>17,010</u>	<u>18,495</u>	<u>131</u>	<u>23,393</u>

6. Analysis of net assets by fund

	Unrestricted funds £	Restricted funds £	2022 Total £	2021 Total £
Current assets	73,925	23,393	97,318	106,625
Current liabilities	(1,374)	-	(1,374)	(1,383)
	<u>72,551</u>	<u>23,393</u>	<u>95,944</u>	<u>105,242</u>

7. Related party transactions

There were no related party transactions other than expenditure reimbursement made to trustees. These payments were supported by documentary evidence such as receipts, and approved for payment by a third party.