

# **Leeds Asylum Seekers Support Network**

Charity number 1092647

## **Annual Report and Financial Statements for the year ended 31 March 2025**

**LASSN**  
Leeds Asylum Seekers'  
Support Network



# **Leeds Asylum Seekers Support Network**

## **Annual Report and Financial Statements for the year ended 31 March 2025**

<b>Contents</b>	<b>Page</b>
Trustees' report	2 to 13
Examiner's report	14
Statement of financial activities	15
Balance sheet	16
Statement of cash flows	17
Notes to the accounts	18 to 26

**Prepared by West Yorkshire Community Accountancy Service CIO**

# Leeds Asylum Seekers Support Network

## Trustees' report for the year ended 31 March 2025

### Reference and administrative details of the charity, its trustees and advisors

The trustees during the financial year and up to and including the date the report was approved were:

<b>Name</b>	<b>Position</b>	<b>Dates</b>
Ian Garforth	Chair	Appointed 22 February 2025
Deborah Murdoch-Eaton		Appointed 22 February 2025
John Ekblom		Appointed 22 February 2025
Akhona Ndudane		Appointed 22 February 2025
Ceri Wilson		Resigned 25 November 2024
Helen Radelaar		Resigned 21 November 2024
Lisa Martin		Resigned 20 September 2024
Mahmoud El Sabouni		Appointed 22 February 2025
Mavis Chi		Appointed 22 February 2025
Nicolle Levine		Appointed 22 February 2025
Rula Samara		Appointed 22 February 2025
Stephen Maw		Appointed 22 February 2025
Tom Peacock		Appointed 22 February 2025
Parveen Ahmad		Appointed 22 February 2025

**Secretary** Jon Beech

**Charity number** 1092647 Registered in England and Wales

### Registered and principal address

22-23 Blayds Yard  
Leeds  
LS1 4AD

### Bankers

Unity Trust Bank plc  
Nine Brindleyplace  
Birmingham  
B1 2HB

Virgin Money (Clydesdale Bank plc t/a  
117 Bothwell Street  
Glasgow  
G2 7ER

Flagstone Group Ltd  
Clareville House  
26-27 Oxenden St  
London  
SW1Y 4EL

### Independent examiner

Simon Bostrom FCIE

### West Yorkshire Community Accountancy Service CIO

Stringer House  
34 Lupton Street  
Leeds  
LS10 2QW

# Leeds Asylum Seekers Support Network

## Trustees' report (continued) for the year ended 31 March 2025

### Why does LASSN exist?

Leeds Asylum Seekers' Support Network was set up in 1999 to respond to the pressing unmet needs of refugees and asylum seekers living in Leeds.

Most of the people we work with have experienced acute isolation, mental health issues, language difficulties and immense uncertainty over their asylum claim.

### Our Charitable objects

According to our governing document, the charity's objects are to

*"to relieve asylum seekers and refugees in need, hardship and distress by reason of their social and economic circumstances... including the advancement of education, relief of poverty and the preservation and protection of good health in the Leeds Metropolitan District."*

In other words

We support asylum seekers and refugees who are experiencing hardship, poverty, or distress because of their social and economic circumstances. We do this by helping to improve their education, health, and wellbeing, and by providing practical support to reduce poverty and isolation.

### Our Vision

LASSN's vision is that refugees, asylum seekers and other migrants will be safe, respected, supported and empowered to rebuild their lives free of persecution.

### What are our goals?

LASSN wants refugees, asylum seekers and other migrants to be:

- **SUPPORTED** and relieved from hardship and distress. We want local people to be central to this support.
- **EMPOWERED** to rebuild their lives and fulfil their potential. We want individuals and communities to have a voice and to influence the communities they live in.
- **INTEGRATED** and safe in their new environment in Leeds. We want Leeds to be a place of welcome and understanding for the general public, organisations, politicians, and policymakers to understand how to collaborate with asylum seekers, refugees, and other migrants to make this happen.

## Leeds Asylum Seekers Support Network

### Trustees' report (continued) for the year ended 31 March 2025

#### How do we achieve our goals?

- By treating refugees and asylum seekers with respect and recognising the value they bring to LASSN Leeds and the UK.
- By listening to refugees and asylum seekers, so that our work reflects their priorities and concerns.
- By working in ways that empower refugees and asylum seekers, and which enable local people to feel more confident about welcoming and supporting them.
- By teaming up with other organisations, so refugees and asylum seekers get the help they want.
- By involving volunteers, who are essential to everything we do and who also benefit from the experience of helping others.

#### LASSN's main activities in 2024/25

- **English at Home** pairs volunteer tutors with asylum seekers and refugees who can't attend mainstream English classes. The project helps people improve their English, build confidence, and work towards their personal goals.
- We provide **Information and raise awareness** of the realities of seeking refuge in the UK. We tackle prejudice and encourage understanding by sharing information through our websites, social media, learning materials, and by working with local groups and campaigns, or through our work with Healthy Communities Together
- **Hosting and Houses** (previously Grace Hosting) provides safe accommodation for destitute asylum seekers. People stay either with a volunteer host or in one of LASSN's shared houses (Grace, Eva, or Kay House). Having a secure place to stay helps people recover from homelessness, focus on their asylum claim, attend appointments, and feel part of the community.
- The **Hardship Fund** offers one-off cash payments (up to £75) to people facing homelessness or destitution during the winter. This money can help cover food, clothing, medicine, or travel to essential appointments. We run the fund with six other refugee support organisations, so help reaches those with no other income.
- **Welcome and Connect** helps asylum seekers and refugees settle into life in Leeds in ways that work for them. Volunteers support people to take part in education, sports, work, arts, and cultural activities. We also organise social events and visits to places of cultural and historical interest to boost confidence and encourage integration.

# Leeds Asylum Seekers Support Network

## Trustees' report (continued) for the year ended 31 March 2025

### What does success look like?

We know we're making a difference by

- the number of people who get one-to-one support from a volunteer.
- the number of people who set goals for themselves and achieve them.
- the number of people who volunteer with LASSN and elsewhere.

In addition, at **English at Home** and **Welcome and Connect**, we also count

- the number of people who try something new or connect with other support in the community.
- The number of people who tell us they no longer need our help because they've achieved their goals.
- The number of people who find specialist support through us.
- The number of hours of support our volunteers give.

**Hosting and Housing** aims to maximise

- the number of homeless asylum seekers with a safe place to stay—either with a host or in one of our shared houses.
- the number of nights of accommodation we provide.
- the number of people who find a suitable alternative to our accommodation
- the number of people moving into Home Office Accommodation.

**Success in our Information and Awareness work and the Hardship Fund** is harder to measure. Instead, we track how many people we reach, how much money we give out, and how widely we share helpful information.

### Achievements in 2024 and priorities for the coming year/future periods

English at Home			
Beneficiaries (Direct)	Beneficiaries (indirect)	Number of volunteers	Overall cost (£)
<b>98</b>	<b>261</b>	<b>93</b>	<b>£127,950</b>
<ul style="list-style-type: none"> <li>• Ninety-three tutors spent 1,750 hours (equivalent to 220 working days) teaching 98 people English.</li> <li>• One-to-one sessions enabled learners to make friends, pass the <i>Life in the UK</i> and B1 tests for Citizenship, pass driving tests, speak with teachers at parents' evenings, make GP appointments, teach sewing to others, attend bakery courses, support other refugees and asylum seekers arriving in the area and much more!</li> <li>• 14 training and support sessions ensured Tutors had a place to share skills, learn from one another, and reflect on how they help people learn.</li> <li>• 95% of learners said they were more confident to speak English after learning with their teacher.</li> <li>• LASSN tutors helped 45 people take college courses or attend mainstream ESOL classes.</li> <li>• Learners were connected with volunteering opportunities to practise their English, including working with older people, in a charity shop, assisting at a creche, in a food bank and retail.</li> <li>• We continue to provide references for volunteers and learners taking up employment.</li> </ul>			

## Leeds Asylum Seekers Support Network

### Trustees' report (continued) for the year ended 31 March 2025

Priorities for the coming year/future periods
<ul style="list-style-type: none"> <li>• Maintain a similar number of learners and volunteers.</li> <li>• Continue to develop the Online learning resources.</li> <li>• Develop volunteer training and skill shares in line with volunteer feedback.</li> <li>• Seek funding to maintain and grow the number of people the project can support.</li> <li>• Continue to support the development of volunteering opportunities across the City in collaboration with partners like Manuel Bravo/Leeds Volunteer Interpreting Service.</li> </ul>

Grace Hosting and Housing			
Beneficiaries (Direct)	Beneficiaries (indirect)	Number of volunteers	Overall cost (£)
<b>43</b>	<b>n/a</b>	<b>21</b>	<b>£136,620</b>
<ul style="list-style-type: none"> <li>• Thirty-eight guests were accommodated for a total of 4,786 nights across Grace Hosting, and in Grace, Eva, and Kay Houses.</li> <li>• 11 different hosts hosted twelve individuals, while 26 stayed in Grace, Eva, or Kay House.</li> <li>• Five people were accommodated in emergency B&amp;B accommodation – usually because we became aware of them out of hours, and we were unable to find anywhere else that was safe</li> <li>• In January 2025, we opened Kay House. Grace House celebrated its fifth year of operation, and Eva House is approaching its third anniversary. All three houses continue to be funded solely through the generosity of donors, volunteers, and supporters, each offering accommodation for 1 to four asylum-seeking men at a time.</li> <li>• During the winter months, hosts and guests received increased financial support to help with the increase in the cost of living and utility bills.</li> <li>• Mobile phones and SIM cards were routinely offered to all guests to help them stay connected.</li> <li>• Bus passes and bicycles were available to all guests, helping them move around the city.</li> <li>• Guests were supported in joining a variety of group activities, including gardening clubs, theatre and rugby outings, and a day trip to Settle.</li> <li>• Seventeen guests received gym memberships to help reduce isolation and support their overall well-being.</li> <li>• A new model of Cluster Hosting was launched, where a group of three host households provides weekly support on a rotating basis to a single individual.</li> </ul>			
Priorities for the coming year/future periods			
<ul style="list-style-type: none"> <li>• Build a stronger community of mutual support across all our houses.</li> <li>• Obtain funding to enable the continuation of the project in its entirety.</li> <li>• Maximise the income available to guests and hosts to pay for food, toiletries, transport, and access to health and fitness activities.</li> </ul>			

## Leeds Asylum Seekers Support Network

### Trustees' report (continued) for the year ended 31 March 2025

The Hardship Fund			
Beneficiaries (Direct)	Beneficiaries (indirect)	Number of volunteers	Overall cost (£)
<b>104</b>	<b>8</b>	<b>4</b>	<b>£7,430</b>
<ul style="list-style-type: none"> <li>The Hardship Fund was open from September 2024 to March 2025, and 302 payments were made.</li> <li>This represents an increase of 23 payments, to 10 people and £315 compared with 2024.</li> </ul>			
Priorities for the coming year/future periods			
<ul style="list-style-type: none"> <li>Ensure the partnership of fundraisers/referrers remains strong.</li> <li>To maximise donations.</li> <li>Help as many people as possible.</li> <li>Find new ways to assess the impact of cash payments.</li> </ul>			

Information and Awareness			
Beneficiaries (Direct)	Beneficiaries (indirect)	Number of volunteers	Overall cost (£)
<b>~20,000</b>	<b>n/a</b>	<b>4</b>	<b>£3,534</b>
<ul style="list-style-type: none"> <li>11,000 people visited <b>lassn.org.uk</b>, where all of LASSN's policies, procedures, and training materials remain freely available for anyone to use or adapt — alongside an online library of more than 100 ESOL resources.</li> <li>3,700 people used <b>helpinleeds.com</b>, a directory of groups and services supporting asylum seekers and refugees in Leeds. In February 2025, we transferred the information from helpinleeds.com to <b>kompasi.org</b>, which will be launching a new and improved directory in June 2025.</li> <li>20,000 people visited <b>migrationpartnership.org.uk</b>, a multi-author blog focused on local asylum, refugee, and migration issues, with significant resources hosted on eVisas — a 9% increase compared to the previous year.</li> <li>LASSN's social media presence continued to grow, with 3,100 likes on Facebook. We closed our Twitter account, as it is no longer a valuable platform for LASSN, and instead concentrated on Instagram, where our following grew from 100 to over 400 in the past year.</li> <li>19,000 people used the <b>newtoleeds.org</b> website, a 13% increase on the previous year. The Housing section was updated several times in response to the growing number of homeless refugees in Leeds.</li> <li>LASSN secured £6000 from Leeds City Council to cover the hosting and security costs of <b>newtoleeds.org</b> and <b>migrationpartnership.org</b>.</li> </ul>			
Priorities for the coming year/future periods			
<ul style="list-style-type: none"> <li>Update and expand the ESOL resources on lassn.org.uk</li> <li>Ensure newtoleeds.org remains updated</li> <li>Secure dedicated funding/resources to maintain and improve LASSN's websites.</li> </ul>			



## Leeds Asylum Seekers Support Network

### Trustees' report (continued) for the year ended 31 March 2025

<b>Welcome &amp; Connect</b>			
Beneficiaries (Direct)	Beneficiaries (indirect)	Number of volunteers	Overall cost (£)
<b>47</b>	<b>57</b>	<b>35</b>	<b>£84,720</b>
<ul style="list-style-type: none"> <li>35 asylum seekers and refugees received weekly mentoring from trained volunteers, resulting in improved English, employment, access to education, and increased confidence. One client is now studying for a Master's in Social Work thanks to this personalised guidance.</li> <li>24 individuals participated in 19 "Tea &amp; Talk" sessions and group outings like yoga and countryside walks, which built social confidence and fostered a sense of regular community and belonging.</li> <li>Partnering with six organisations, eight themed group activities were delivered, including arts and crafts, university tours, library visits and well-being workshops—broadening access to local culture, education, and public spaces.</li> <li>248 bus passes enabled access to Leeds city centre, galleries, exercise sessions and workshop while 45 holistic assessments led to essential service referrals. Many clients' families and friends also benefited through shared support and information. Volunteer-led mentoring built trust, reduced isolation, and created a lasting impact.</li> </ul>			
<b>Priorities for the coming year/future periods</b>			
<ul style="list-style-type: none"> <li>Increased focus on one-to-one support for isolated refugees.</li> <li>Secure funding to maintain and expand the current model,</li> <li>Creating more capacity for one-to-one support</li> <li>Establish new partnerships to help with better integration (eg with the University of Leeds)</li> </ul>			

## What's helped LASSN achieve our objectives, and what's got in the way?

Internal factors are in blue, external factors are in yellow.

Object	What's helped	What's got in the way
<b>Support</b>	Having enough well-trained, well-supported volunteers.	Recruiting more volunteers with lived experience of forced migration has been positive, but it can also mean these volunteers face challenges in completing Police checks and providing references.
	Effective volunteer management	Staff turnover and absence have sometimes affected continuity and added pressure on colleagues.
	Sufficient funding for English at Home, Hosting, and Housing.	Welcome and Connect continues to face funding shortfalls.
		Leeds still has double the number of Asylum seekers supported by the Home Office than in 2014, with most living in hotels on the outskirts of Leeds

## Leeds Asylum Seekers Support Network

### Trustees' report (continued) for the year ended 31 March 2025

		Efforts to clear the asylum backlog have created more need for immigration and housing advice, as well as resettlement support – areas LASSN doesn't directly provide
<b>Empower</b>	LASSN produces high-quality learning materials for ESOL and New to Leeds to support self-reliance and independence.	Frequent changes in asylum support and Home Office policy make it more complicated to explain processes and promote self-help.
	Practical volunteer training, refined through client and volunteer feedback – especially around the role of volunteers as “allies” rather than “fixers.”	Increased poverty and lower living standards have made many clients more dependent on charity and donated goods.
<b>Integrate</b>	Social events and activities bring people together to share cultures.	Poverty and transport barriers make it hard for clients to take part in community activities, even when they want to.
	Building partnerships with wider community groups, businesses and non-specialist organisations to promote inclusion and integration.	Home Office accommodation is still allocated on a no-choice basis, often moving people to unfamiliar areas where it's difficult to build connections.
		Continued racist and Islamophobic rhetoric in politics and the media has contributed to increased hostility and prejudice in some communities.

## LASSN's public benefit statement

- LASSN's activities and new initiatives focus on supporting asylum seekers, refugees, and other migrants who are at risk of harm or exploitation.
- Accessibility is central to how we deliver services. We typically meet people in their homes or nearby, provide online support, and ensure households without devices or internet access are equipped with computers, phones, and connections.
- Tackling hardship and destitution among asylum seekers remains a key priority, alongside helping those with refugee status to integrate and build stable lives.
- Strong community support and partnerships underpin our work. We collaborate with other organisations to improve outcomes (e.g. ensuring all Hosting and Housing guests receive destitution support from the British Red Cross or PAFRAS) and to influence strategies at local, regional, and national levels through networks such as Leeds Migration Partnership, Asylum Matters, and the No Accommodation Network.

## **Leeds Asylum Seekers Support Network**

### **Trustees' report (continued) for the year ended 31 March 2025**

#### LASSN's plans for the coming year/future periods

- LASSN aims for each of its projects to combine effective support with excellent value for money. Over the coming year, each project will review how it measures the effectiveness of its support and the impact it has on the people we help.
- We are pleased to have increased the proportion of Trustees with direct experience of seeking refuge in the UK to 45%. In 2025, we hope to build on this by involving more refugees and asylum seekers in evaluating the quality and cost of our services.
- More detailed plans for each project can be found at the end of their respective entries under Achievements in 2024.

#### Financial review

- The net expenditure for the year was £119,744, including a net income of £269,413 on unrestricted funds and a net expenditure of £389,157 on restricted funds, after transfers.
- The charity was the beneficiary of a substantial legacy during the previous financial year. This legacy, was restricted to enable the purchase and retrofit of a property to house refugees and asylum seekers and then provide funding for the Hosting and Housing projects with the balance. LASSN completed the purchase of a property ("Kay House") in September 2024, with the majority of the refurb and retrofit works completed by January 2025. Expenditure of this legacy represents a significant portion of the net expenditure of the charity in this period and has impacted upon our ability to raise alternative funding.
- We remain hugely grateful for the support from numerous grant funders, great and small, who continue to provide significant support to our various projects.
- LASSN benefits enormously from the generosity of individual donors and supporters. Their contributions to unrestricted funds ensure the continued operation of LASSN projects when funding streams have ended.

#### Reserves policy

- The trustees' policy is to hold reserves of between three and nine months of average expenditure to support the smooth running of the charity and enable an orderly winding up should the charity be forced to close down. Based on the budgeted operational expenditure of approximately £390,000, this would equate to a lower limit of £97,500 and an upper limit of £292,500.
- The charity's free reserves, excluding fixed assets, at the year-end were £212,599.
- The calculation for the reserves is as follows:
- The total funds held at the year-end were £727,823. Restricted funds were £216,436, leaving £511,387 in unrestricted funds. Excluding fixed assets of £298,788, leaves £212,599 representing the charity's free reserves.

#### Risk management

- Managing risks: Our trustees keep an eye on any significant risks the charity might face, especially those linked to how we run and fund our work. They have a plan in place, review risks regularly, and set up systems to reduce them.

## Leeds Asylum Seekers Support Network

### Trustees' report (continued) for the year ended 31 March 2025

- Funding risks: LASSN relies on grants, donations and gifts, which can sometimes be uncertain. Changes in government policy on asylum and immigration can also affect us. To manage this, our staff and Director apply for funding and ask key partner organisations to provide references showing that our work is effective and sustainable.
- Safeguarding and safety: Because we work with children, adults at risk, and often in people's homes, we take safeguarding and safety very seriously. We have strong policies in place for protecting children and adults, checking criminal records, health and safety, equal opportunities, insurance, and dealing with staff issues. Volunteers are fully trained on personal safety and safeguarding, provide references, and are supported with regular supervision.

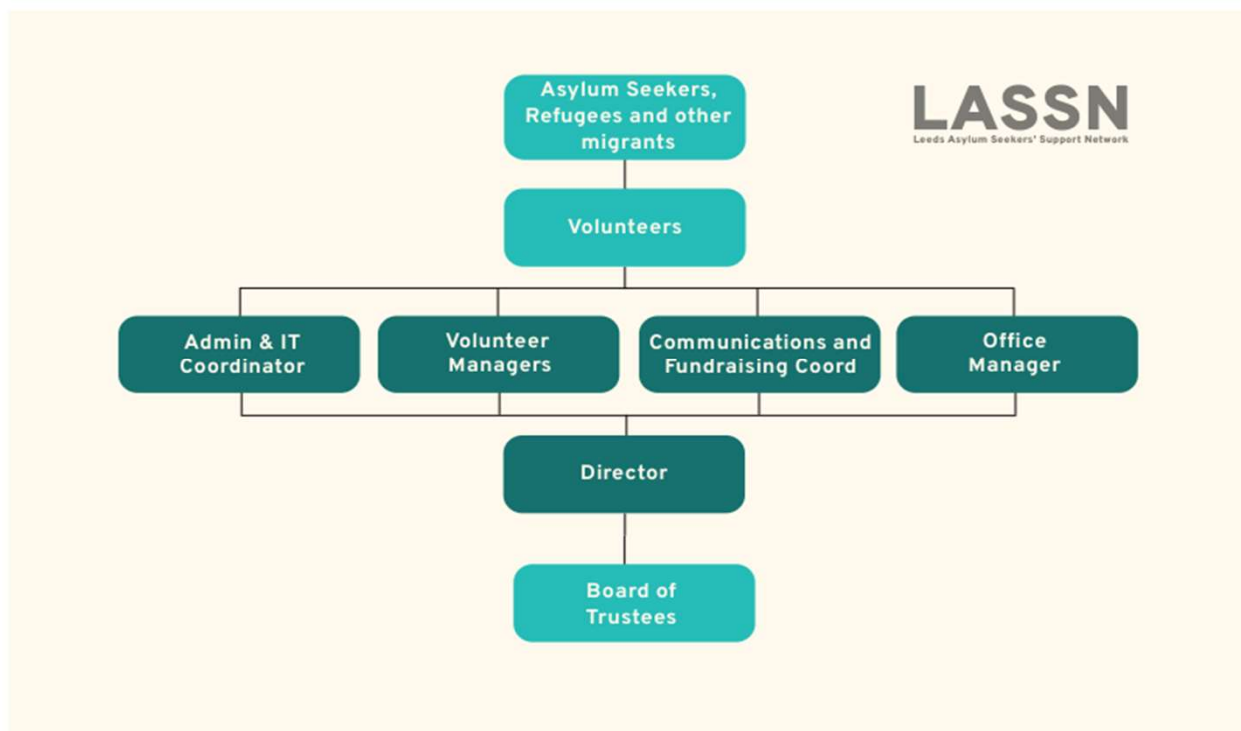
## Structure, governance and management

On 12 September 2024, LASSN was reconstituted from a Charitable Company to a Charitable Incorporated Organisation (CIO). LASSN was originally formed on 5 June 2001 and is governed by a memorandum and articles of association, which were updated at the time of reconstitution. In the event of winding up, the liability of each member is limited to a sum not exceeding £1. The Company was registered as a charity on 27<sup>th</sup> June 2002.

### Members

LASSN supporters can become members and membership is, currently, free. In 2024/25, LASSN had 81 members.

### Organisational Structure



## **Leeds Asylum Seekers Support Network**

### **Trustees' report (continued) for the year ended 31 March 2025**

#### **The recruitment and appointment of Trustees**

LASSN recruits trustees through word of mouth and by advertising on our website and social media. Applications are reviewed using our Trustee Recruitment Policy, which looks for people with the right skills and experience based on an annual audit of the Board's needs.

The Board of Trustees can also co-opt (invite) additional company members as trustees up to the maximum of twelve trustees.

- At each AGM, one-third of the elected trustees must step down.
- Those who have been in post the longest since their last election will retire first.
- Retiring trustees can stand for re-election, but no one can serve more than nine years in a row.
- Co-opted (invited) trustees must step down at the first AGM after they were appointed but can be re-appointed or stand for election.

All trustees receive a full induction and training in line with our Trustee Induction Policy. This ensures they understand their legal responsibilities and are familiar with LASSN's vision, values, priorities, and the needs of the people we support.

#### **Decision Making**

Each year, the Board of Trustees agrees on the Charity's key priorities and risks, as informed by the recommendations of the Staff team and the asylum seekers and refugees LASSN supports. The Trustees then agree on a budget to address these priorities and risks, and LASSN staff receive delegated authority to act within this budget in line with the wishes of the Trustees. The Board of Trustees appoints sub-groups to oversee detailed discussions of Finance and Resources, Human Resources, and the development and review of LASSN Policies, which are then brought to the Full Board for Discussion and approval.

#### **Grant Making Policy**

LASSN partners with other organisations within the refugee sector to provide better services for asylum seekers and refugees. On some occasions, this partnership involves LASSN holding grant awards and managing the distribution and accounting by partners.

The Hardship Fund is administered by Leeds Refugee Forum and is made up of donations to provide subsistence support to destitute asylum seekers. To this end, grants are made to a third party or directly to individuals in exceptional circumstances.

#### **Pay and remuneration of the Charity's key management personnel**

All staff role descriptions and pay are benchmarked against NJC Scales. The Director is currently paid at PO3/4.

## **Leeds Asylum Seekers Support Network**

### **Trustees' report (continued) for the year ended 31 March 2025**

#### Related parties

- LASSN is a member of the Solidarity Network – alongside Leeds Gypsy and Travellers' Exchange, BASIS Yorkshire and Yorkshire MESMAC – who deliver the Healthy Communities Together project with Leeds City Council and West Yorkshire Integrated Care Board.
- LASSN raises funds for the Leeds Hardship Fund for destitute asylum seekers, operated by Leeds Refugee Forum.
- LASSN works closely with Positive Action for Refugees and Asylum Seekers (PAFRAS) and the British Red Cross, who provide support and advice for clients staying with Grace Hosting and Grace, Eva and Kay Houses.

#### Volunteers

Volunteers are vital to the success of everything LASSN achieves. In 2024/25, LASSN staff supported 167 volunteers in various roles, 56 of whom were recruited in the last year. If each volunteer volunteered for an hour and a half each week, this is equivalent to an extra 6.5 full-time staff members.

#### Supporters

LASSN's mailing list of active supporters includes around 1300 individuals and 400 organisations.

Approved by the board of trustees on 15 September 2025

John Ekblom (Trustee)

# **Leeds Asylum Seekers Support Network**

## **Independent examiner's report to the trustees of Leeds Asylum Seekers Support Network**

I report to the charity trustees on my examination of the accounts of the CIO for the year ended 31 March 2025, which are set out on pages 15 to 26.

### **Responsibilities and basis of report**

As the charity trustees of the CIO you are responsible for the preparation of the accounts in accordance with the requirements of the Charities Act 2011 ('the Act').

I report in respect of my examination of the CIO's accounts as carried out under section 145 of the 2011 Act. In carrying out my examination I have followed all the applicable Directions given by the Charity Commission under section 145(5)(b) of the Act.

### **Independent examiner's statement**

Since the CIO's gross income exceeded £250,000 your examiner must be a fellow of a body listed in section 145 of the 2011 Act.

I confirm that I am qualified to undertake the examination because I am a fellow of ACIE which is one of the listed bodies.

I have completed my examination. I confirm that no material matters have come to my attention in connection with the examination giving me cause to believe that in any material respect:

- 1 accounting records were not kept in respect of the charity as required by section 130 of the Charities Act;
- 2 the accounts do not accord with those records; or
- 3 the accounts do not comply with the applicable requirements concerning the form and content of accounts set out in the Charities (Accounts and Reports) Regulations 2008 other than any requirement that the accounts give a 'true and fair view' which is not a matter considered as part of an independent examination.

I have no concerns and have come across no other matters in connection with the examination to which attention should be drawn in this report in order to enable a proper understanding of the accounts to be reached.

Simon Bostrom FCIE

19 September 2025

### **West Yorkshire Community Accountancy Service CIO**

Stringer House  
34 Lupton Street  
Leeds  
LS10 2QW

**Leeds Asylum Seekers Support Network**  
**Statement of Financial Activities**  
**(including summary income and expenditure account)**  
**for the year ended 31 March 2025**

	Notes	2025 Unrestricted funds £	2025 Restricted funds £	2025 Total funds £	2024 Total funds £
<b>Income from:</b>					
Donations and legacies	(2)	95,763	201,468	297,231	899,237
Charitable activities	(3)	3,420	-	3,420	3,349
Bank interest		18,607	-	18,607	5,073
<b>Total income</b>		<u>117,790</u>	<u>201,468</u>	<u>319,258</u>	<u>907,659</u>
<b>Expenditure on:</b>					
Charitable activities	(4)	153,697	285,305	439,002	395,600
<b>Total expenditure</b>		<u>153,697</u>	<u>285,305</u>	<u>439,002</u>	<u>395,600</u>
<b>Net income / (expenditure)</b>		<u>(35,907)</u>	<u>(83,837)</u>	<u>(119,744)</u>	<u>512,059</u>
<b>Transfers between funds</b>		<u>305,320</u>	<u>(305,320)</u>	<u>-</u>	<u>-</u>
<b>Net movement in funds</b>		<u>269,413</u>	<u>(389,157)</u>	<u>(119,744)</u>	<u>512,059</u>
<b>Fund balances brought forward</b>		<u>241,974</u>	<u>605,593</u>	<u>847,567</u>	<u>335,508</u>
<b>Fund balances carried forward</b>	(5)	<u>511,387</u>	<u>216,436</u>	<u>727,823</u>	<u>847,567</u>

All incoming resources and resources expended derive from continuing activities.



# Leeds Asylum Seekers Support Network

## Balance sheet

as at 31 March 2025

		2025	2025	2025	2024
		Unrestricted	Restricted	Total	Total
		£	£	£	£
<b>Fixed assets</b>					
Tangible assets	(6)	298,788	-	298,788	-
<b>Total fixed assets</b>		<u>298,788</u>	<u>-</u>	<u>298,788</u>	<u>-</u>
<b>Current assets</b>					
Debtors and prepayments	(7)	14,345	1,286	15,631	307,089
Cash at bank and in hand	(8)	201,303	216,858	418,161	543,740
<b>Total current assets</b>		<u>215,648</u>	<u>218,144</u>	<u>433,792</u>	<u>850,829</u>
<b>Current liabilities:</b>					
<b>amounts falling due within one year</b>					
Creditors and accruals	(9)	3,049	1,708	4,757	3,262
<b>Total current liabilities</b>		<u>3,049</u>	<u>1,708</u>	<u>4,757</u>	<u>3,262</u>
<b>Net current assets / (liabilities)</b>		<u>212,599</u>	<u>216,436</u>	<u>429,035</u>	<u>847,567</u>
<b>Net assets</b>		<u>511,387</u>	<u>216,436</u>	<u>727,823</u>	<u>847,567</u>
<b>Funds</b>					
Unrestricted funds		511,387	-	511,387	241,974
Restricted funds		-	216,436	216,436	605,593
<b>Total funds</b>		<u>511,387</u>	<u>216,436</u>	<u>727,823</u>	<u>847,567</u>

The financial statements were approved by the board of trustees on 15 September 2025

John Ekblom (Trustee)

**Leeds Asylum Seekers Support Network**  
**Statement of cash flows**  
**for the year ended 31 March 2025**

	2025 £	2024 £
<b>Cash flows from operating activities:</b>		
<b>Net cash provided by (used in) operating activities</b>	<u>161,134</u>	<u>203,856</u>
<b>Cash flows from investing activities:</b>		
Bank interest	18,607	5,073
Purchase of tangible fixed assets (excluding donated assets)	<u>(305,320)</u>	<u>-</u>
<b>Net cash provided by (used in) investing activities</b>	<u>(286,713)</u>	<u>5,073</u>
Change in cash and cash equivalents in the reporting period	(125,579)	208,929
Cash and cash equivalents at the beginning of the reporting period	<u>543,740</u>	<u>334,811</u>
<b>Cash and cash equivalents at the end of the reporting period</b>	<u>418,161</u>	<u>543,740</u>

<b>Reconciliation of net movement in funds to net cash flow from operating activities</b>	2025	2024
	£	£
Net movement in funds for the reporting period (as per the statement of financial activities)	(119,744)	512,059
Adjustments for:		
Depreciation charges	6,532	-
Interest on investments	(18,607)	(5,073)
(Increase) / decrease in debtors	291,458	(299,805)
Increase / (decrease) in creditors	<u>1,495</u>	<u>(3,325)</u>
<b>Net cash provided by (used in) operating activities</b>	<u>161,134</u>	<u>203,856</u>

<b>Analysis of cash and cash equivalents</b>	2025	2024
	£	£
Cash in hand	-	-
Notice deposits	<u>418,161</u>	<u>543,740</u>
<b>Total cash and cash equivalents</b>	<u>418,161</u>	<u>543,740</u>

# **Leeds Asylum Seekers Support Network**

## **Notes to the accounts**

### **for the year ended 31 March 2025**

#### **1 Accounting policies**

##### **Basis of accounting**

These accounts have been prepared under the historical cost convention with items recognised at cost or transaction value unless otherwise stated in the relevant note(s) to these accounts. The financial statements have been prepared in accordance with the Statement of Recommended Practice: Accounting and Reporting by Charities preparing their accounts in accordance with the Financial Reporting Standard applicable in the UK and Republic of Ireland (FRS 102) (effective 1 January 2019) and with the Charities Act 2011.

The charity constitutes a public benefit entity as defined by FRS 102.

There has been no change to the accounting policies since last year.

No changes have been made to the accounts for previous years.

##### **Going concern**

The trustees are satisfied that there are no material uncertainties about the charity's ability to continue.

##### **Incoming resources**

All incoming resources are included in the Statement of Financial Activities (SOFA) when the charity becomes entitled to the resources, if it is more likely than not that the trustees will receive the resources and the monetary value can be measured with sufficient reliability.

##### **Grants and donations**

Grants and donations are only included in the SOFA when the charity has unconditional entitlement to the resources.

Where grants are related to performance and specific deliverables, they are accounted for as the charity earns the right to consideration by its performance.

Donated assets, facilities or services are valued at their estimated value to the charity. This is the price that the charity estimates it would pay in the open market for equivalent items; or services and facilities of equivalent utility to the charity.

##### **Expenditure and liabilities**

Expenditure is recognised on an accrual basis as a liability is incurred. Liabilities are recognised where it is more likely than not that there is a legal or constructive obligation committing the charity to pay out the resources and the amount of the obligation can be measured with reasonable certainty.

##### **Grants payable without performance conditions**

Where there are no conditions attaching to the grant that enables the donor charity to realistically avoid the commitment, a liability for the full funding obligation must be recognised.

##### **Taxation**

As a charity the organisation benefits from rates relief and is generally exempt from income tax and capital gains tax but not from VAT. Irrecoverable VAT is included in the cost of those items to which it relates.

##### **Tangible fixed assets**

Tangible fixed assets costing more than £1,000 are capitalised and included at cost including any incidental expenses of acquisition. Gifted assets are shown at the value to the charity on receipt.

Depreciation is provided on all tangible fixed assets at rates calculated to write off the cost on a straight line basis over their expected useful economic lives as follows:

Land and buildings: Over 50 years

Fixtures and fittings: Over 10 years

# **Leeds Asylum Seekers Support Network**

## **Notes to the accounts**

### **for the year ended 31 March 2025**

#### **1 Accounting policies continued**

##### **Pensions**

The charity operates a defined contribution scheme for the benefit of its employees. The costs of contributions are recognised in the year they are payable.

##### **Fund accounting**

Unrestricted funds are available for use at the discretion of the trustees in furtherance of the general objectives of the charity.

Designated funds are unrestricted funds earmarked by the trustees for particular purposes.

Restricted funds are subjected to restrictions on their expenditure imposed by the donor or through the terms of an appeal.

Further explanation of the nature and purpose of each fund is included in the notes to the accounts.

##### **Leases**

Rents under operating leases are charged on a straight line basis over the lease term or to an earlier date if the lease can be determined without financial penalty.

# Leeds Asylum Seekers Support Network

## Notes to the accounts continued

### for the year ended 31 March 2025

2 Donations and legacies		2025	2025	2025	2024
		Unrestricted	Restricted	Total	Total
		funds	funds	funds	funds
		£	£	£	£
Legacies		1,634	-	1,634	554,235
<b>Grants</b>					
B&Q Foundation		-	5,000	5,000	-
Leeds Building Society		-	2,750	2,750	55,855
Leeds Christian Community Trust		-	2,000	2,000	3,250
Leeds City Council		-	27,000	27,000	21,779
Leeds Older Peoples Forum		-	9,800	9,800	-
NACCOM		-	11,291	11,291	-
PAFRAS		-	1,000	1,000	-
The National Lottery Awards for All		-	20,000	20,000	-
The National Lottery Community Fund (NLCF)		-	102,284	102,284	98,094
Tilehouse Trust		-	2,500	2,500	-
Yorkshire Mesmac		-	10,800	10,800	10,800
Holy Family of Bordeaux		-	-	-	5,000
Leeds Community Foundation		-	-	-	20,848
Newby Trust		-	-	-	10,000
Peoples Voice Media		-	-	-	1,600
PSI Volition		-	-	-	4,945
Other donations (inc gift aid)		50,449	7,043	57,492	69,151
<b>Donated services</b>					
Grace House provide rent free		21,840	-	21,840	21,840
Eva's House provide rent free		21,840	-	21,840	21,840
		<u>95,763</u>	<u>201,468</u>	<u>297,231</u>	<u>899,237</u>
3 Charitable activities income		2025	2025	2025	2024
		Unrestricted	Restricted	Total	Total
		funds	funds	funds	funds
		£	£	£	£
Fees for services		3,400	-	3,400	3,329
Memberships		20	-	20	20
		<u>3,420</u>	<u>-</u>	<u>3,420</u>	<u>3,349</u>
4 Charitable activities expenditure		Activities	Grant	2025	2024
		undertaken	funding of	Total	Total
		directly	activities	cost	cost
		£	£	£	£
Charitable activities		361,181	3,028	439,002	395,600
		<u>361,181</u>	<u>3,028</u>	<u>439,002</u>	<u>395,600</u>

# Leeds Asylum Seekers Support Network

## Notes to the accounts continued

### for the year ended 31 March 2025

#### 4a Support costs

	2025	2024
	Total	Total
	cost	cost
	£	£
<b>Support cost type</b>		
Management and admin salaries	48,583	41,099
Fundraising	14,233	14,244
Trustee and members meetings	1,960	723
Trustee facilitation and expenses	1,987	2,245
Human resources	1,651	886
Payroll fees	1,620	1,748
IT support	1,440	1,440
Independent examination	1,512	1,795
Legal and professional fees	1,807	3,108
	<u>74,793</u>	<u>67,288</u>

#### 4b Charitable activities expenditure detail

	2025	2025	2025	2024
	Unrestricted	Restricted	Total	Total
	funds	funds	cost	cost
	£	£	£	£
Salaries, pensions and NIC (4c)	60,715	177,107	237,822	234,384
Payroll charges	136	1,484	1,620	1,748
Premises	12,522	20,115	32,637	18,332
Office and admin expenses	2,508	2,307	4,815	3,370
Insurance	2,868	462	3,330	2,603
Staff recruitment and training	1,285	480	1,765	2,080
Publicity	681	627	1,308	1,485
Staff expenses	1,486	2,310	3,796	2,832
Equipment and ICT support	4,303	7,871	12,174	6,616
Volunteer costs	191	7,281	7,472	9,129
Legal and professional fees	751	2,707	3,458	3,994
Client involvement	6,258	41,264	47,522	40,930
Grants payable	-	3,028	3,028	1,300
Accountancy and independent examination	1,512	-	1,512	1,512
Trustee expenses and AGM	2,430	-	2,430	1,170
Facilitation	1,517	200	1,717	1,798
House operating costs	4,322	18,062	22,384	18,637
Donated services	43,680	-	43,680	43,680
	<u>153,697</u>	<u>285,305</u>	<u>439,002</u>	<u>395,600</u>

# Leeds Asylum Seekers Support Network

## Notes to the accounts continued

### for the year ended 31 March 2025

#### 4c Staff costs and numbers

	2025	2024
	£	£
Gross salaries	213,018	210,829
Social security costs	19,344	18,228
Employment allowance	(5,000)	(5,000)
Pensions	10,460	10,327
	<u>237,822</u>	<u>234,384</u>

The average number of employees during the year was 8.4, being an average of 6.3 full time equivalent (2024: 9.3, 6.4 FTE). There were no employees with emoluments above £60,000.

#### Defined contribution pension scheme

	2025	2024
	£	£
Costs of the scheme to the charity for the year	10,460	10,327
Amount of any contributions outstanding at the year end	-	-
Amount of any contributions prepaid at the year end	-	-

#### 4d Grant making

##### Project or activity

	2025	2024
	£	£
Grants were awarded under the Hardship Fund to help asylum seekers in particular need of support. These grants were paid to individuals through Leeds Refugee Forum.	3,028	1,300
Total	<u>3,028</u>	<u>1,300</u>

# Leeds Asylum Seekers Support Network

## Notes to the accounts continued

### for the year ended 31 March 2025

5 Restricted funds	Balance b/f	Incoming	Outgoing	Transfers	Balance c/f
	£	£	£	£	£
Hardship Fund	1,107	4,545	3,028	-	2,624
Big Lottery Fund	5,721	102,284	99,907	-	8,098
Leeds City Council	9,478	17,500	26,978	-	-
Newby Trust	10,000	-	10,000	-	-
Tilehouse Trust	-	2,500	2,500	-	-
NLCF Awards for All	-	20,000	2,887	-	17,113
NACCOM	-	11,291	11,291	-	-
Grace House donations	4,997	2,498	3,858	-	3,637
Household Support Fund	460	9,800	10,260	-	-
Leeds Building Society Fdn.	24,367	-	24,367	-	-
Kay House fund	494,692	-	49,978	(303,700)	141,014
Leeds Building Society	24,750	2,750	7,883	(1,620)	17,997
LCCT	1,250	-	887	-	363
PAFRAS	-	1,000	1,000	-	-
B&Q Foundation	-	5,000	5,000	-	-
LCCT	-	2,000	2,000	-	-
Yorkshire and Clydesdale Bank	4,326	-	-	-	4,326
NHS Animations	5,560	-	-	-	5,560
LCC	-	3,500	3,500	-	-
Yorkshire Mesmac	7,016	10,800	13,036	-	4,780
Adel War Memorial Association	1,021	-	1,021	-	-
LCF Ukraine Fund	5,848	-	5,848	-	-
LCC	-	6,000	76	-	5,924
Holy Family of Bordeaux	5,000	-	-	-	5,000
	<u>605,593</u>	<u>201,468</u>	<u>285,305</u>	<u>(305,320)</u>	<u>216,436</u>

#### Fund name

Hardship Fund  
Big Lottery Fund

#### Purpose of restriction

Grants paid to individuals through Leeds Refugee Forum.  
Towards project costs of the English at Home scheme providing opportunities for ESOL learning to refugees and asylum seekers living in Leeds.  
Asylum Dispersal funding for the Welcome & Connect project.  
Towards the Welcome & Connect project.  
Towards the Welcome & Connect project.  
Towards the Welcome & Connect project.  
To support Hosting & Houses project.  
Individual donations towards the costs of Grace House.  
To assist hosted and housed guests with daily living expenses.  
Towards the operating costs for Grace and Eva's House.  
Funds from a legacy donation to enable the purchase and retrofit of a property to house Refugee/Asylum Seekers and provide funding for the Hosting and Housing projects with the balance of the legacy. The transfer relates to the purchase of the property and a boiler for the general purposes of the charity.  
To enable "Green" improvements to anticipated 3rd House. The transfer relates to the replacement windows which have been treated as fixed assets.  
To assist with Emergency accommodation for individuals granted asylum and evicted from hotel accommodation.  
To assist hosted and housed guests with daily living expenses.  
To assist with improvements to Grace & Eva Houses.  
To assist hosted and housed guests with daily living expenses.



# Leeds Asylum Seekers Support Network

## Notes to the accounts continued

### for the year ended 31 March 2025

#### 5 Restricted funds continued

Fund name	Purpose of restriction
Yorkshire and Clydesdale Bank	Towards financial literacy project costs.
NHS Animations	Refugee film project to increase awareness of NHS services.
LCC	To purchase tablets/devices for Trustees.
Yorkshire Mesmac	To enable Management consultancy provision to Healthy Communities Together project.
Adel War Memorial Association	Towards sports and physical activities for refugees and asylum seekers.
LCF Ukraine Fund	Towards website maintenance.
LCC	Towards website maintenance costs.
Holy Family of Bordeaux	Towards the running costs of Grace House, client subsistence, bills and volunteer travel and expenses.

#### 6 Tangible assets

	Fixtures and fittings	Land and buildings	Total
<u>Cost</u>	£	£	£
At 1 April 2024	-	-	-
Additions	5,320	300,000	305,320
At 31 March 2025	5,320	300,000	305,320
<u>Depreciation</u>			
At 1 April 2024	-	-	-
Charge for year	532	6,000	6,532
At 31 March 2025	532	6,000	6,532
<u>Net book value</u>			
At 31 March 2025	4,788	294,000	298,788
At 31 March 2024	-	-	-

#### 7 Debtors and prepayments

	2025	2024
	£	£
Prepayments	3,616	2,768
Accrued income	12,015	304,321
	15,631	307,089

#### 8 Cash at bank and in hand

	2025	2024
	£	£
Cash at bank	418,161	543,740
Cash in hand	-	-
	418,161	543,740

# Leeds Asylum Seekers Support Network

## Notes to the accounts continued

### for the year ended 31 March 2025

#### 9 Creditors and accruals

	2025	2024
	£	£
Accruals for grants payable	-	1,000
Accruals	4,757	2,262
	<u>4,757</u>	<u>3,262</u>

#### 10 Related party transactions

##### Trustee expenses

During the year two trustees were paid a total of £190 in respect of travel (previous year: one trustee and £134).

##### Trustee remuneration and benefits

No trustee received any remuneration or benefit during this or the previous year.

##### Remuneration and benefits received by key management personnel

The total employee benefits received by key management personnel were £51,861 (previous year: £50,329).

##### Other transactions with trustees or related parties

Nicolle Levine (Trustee) and Sally Brown (Volunteer) are joint owners of a residential property known as Grace House (5 Village Place) which is let to LASSN on a £nil rent for the purpose of housing Refugee/Asylum Seekers. No payments were made to her this year (previous year £nil).

## Leeds Asylum Seekers Support Network

### Statement of Financial Activities including comparatives for all funds (including summary income and expenditure account) for the year ended 31 March 2025

	2025 Unrestricted funds £	2024 Unrestricted funds £	2025 Restricted funds £	2024 Restricted funds £	2025 Total funds £	2024 Total funds £
<b>Income</b>						
Donations and legacies	95,763	166,555	201,468	732,682	297,231	899,237
Charitable activities	3,420	3,349	-	-	3,420	3,349
Bank interest	18,607	5,073	-	-	18,607	5,073
<b>Total income</b>	<b>117,790</b>	<b>174,977</b>	<b>201,468</b>	<b>732,682</b>	<b>319,258</b>	<b>907,659</b>
<b>Expenditure</b>						
Charitable activities	153,697	173,577	285,305	222,023	439,002	395,600
<b>Total expenditure</b>	<b>153,697</b>	<b>173,577</b>	<b>285,305</b>	<b>222,023</b>	<b>439,002</b>	<b>395,600</b>
<b>Net income / (expenditure)</b>	<b>(35,907)</b>	<b>1,400</b>	<b>(83,837)</b>	<b>510,659</b>	<b>(119,744)</b>	<b>512,059</b>
<b>Transfers between funds</b>	<b>305,320</b>	<b>-</b>	<b>(305,320)</b>	<b>-</b>	<b>-</b>	<b>-</b>
<b>Net movement in funds</b>	<b>269,413</b>	<b>1,400</b>	<b>(389,157)</b>	<b>510,659</b>	<b>(119,744)</b>	<b>512,059</b>
<b>Fund balances brought forward</b>	<b>241,974</b>	<b>240,574</b>	<b>605,593</b>	<b>94,934</b>	<b>847,567</b>	<b>335,508</b>
<b>Fund balances carried forward</b>	<b>511,387</b>	<b>241,974</b>	<b>216,436</b>	<b>605,593</b>	<b>727,823</b>	<b>847,567</b>