



Learning Disability England

Learning Disability England Report and Accounts 2022 - 2023

Learning Disability England Trustee report



What this is about



This is the Annual Report from the Learning Disability England Trustees

It looks at the year from 1 April 2022 to 31 March 2023.



The report and accounts tell people about the work that Learning Disability England has done.

It also tells people how it has spent the money.



Learning Disability England must publish its report and accounts every year.

This is because it is a registered charity.



The report has been put together by the Board of Trustees of Learning Disability England.

[Find out more about the Trustees here](#)



The aims and objectives of Learning Disability England

Learning Disability England is a membership organisation.

Members can be people with learning disabilities, their families, friends, and paid supporters.

Organisations and groups can be members too.

Learning Disability England brings together three groups –

- people with learning disabilities,
- family members
- people in paid roles (for example, supporters, managers, and researchers)

We do this to help people to:

learn from each other

- work out problems
- be a louder, stronger voice



Learning Disability England members share the same aims and values.

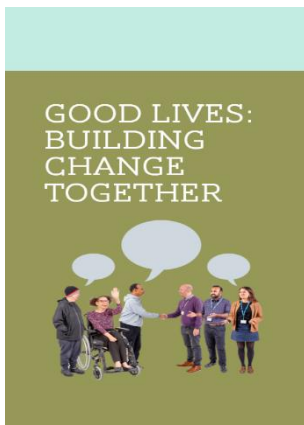


Members must agree with these aims and values when they join.

[Read the aims and values here](#)



Members work with each other on an equal basis to share knowledge and create a movement for change together.



Members work together to build a world where people with learning disabilities have good lives with equal choices and opportunities as others.



At the end of March 2023 there were a total of 704 members.

This was 188 organisation or group members and 537 individual members.



[You can find out more about being a member here](#)



How Learning Disability England makes decisions

Learning Disability England has a [Board of Trustees](#).

The Trustees are responsible for governing the charity.



This means that they make the big decisions.

They make sure Learning Disability England works to the Charity Commission rules and the law.



The Board of Trustees works closely with the [Representative \(Rep\) Body](#).

The **Rep Body** makes decisions about what members will work on together.



The Rep Body are elected by members to represent them.

There are 12 Rep Body members representing the three different 'voice groups'.



In 2022 5 new member representatives joined the Rep Body.

They had a handover and induction to help them understand the role.



The Chief Executive works with the Trustees and Rep Body to lead Learning Disability England.



There is a small **staff team** of 7 people. Most of the team work part time and work from home across the country.

[Find out about the staff team here](#)



The big priorities Learning Disability England worked on in 2022 - 2023



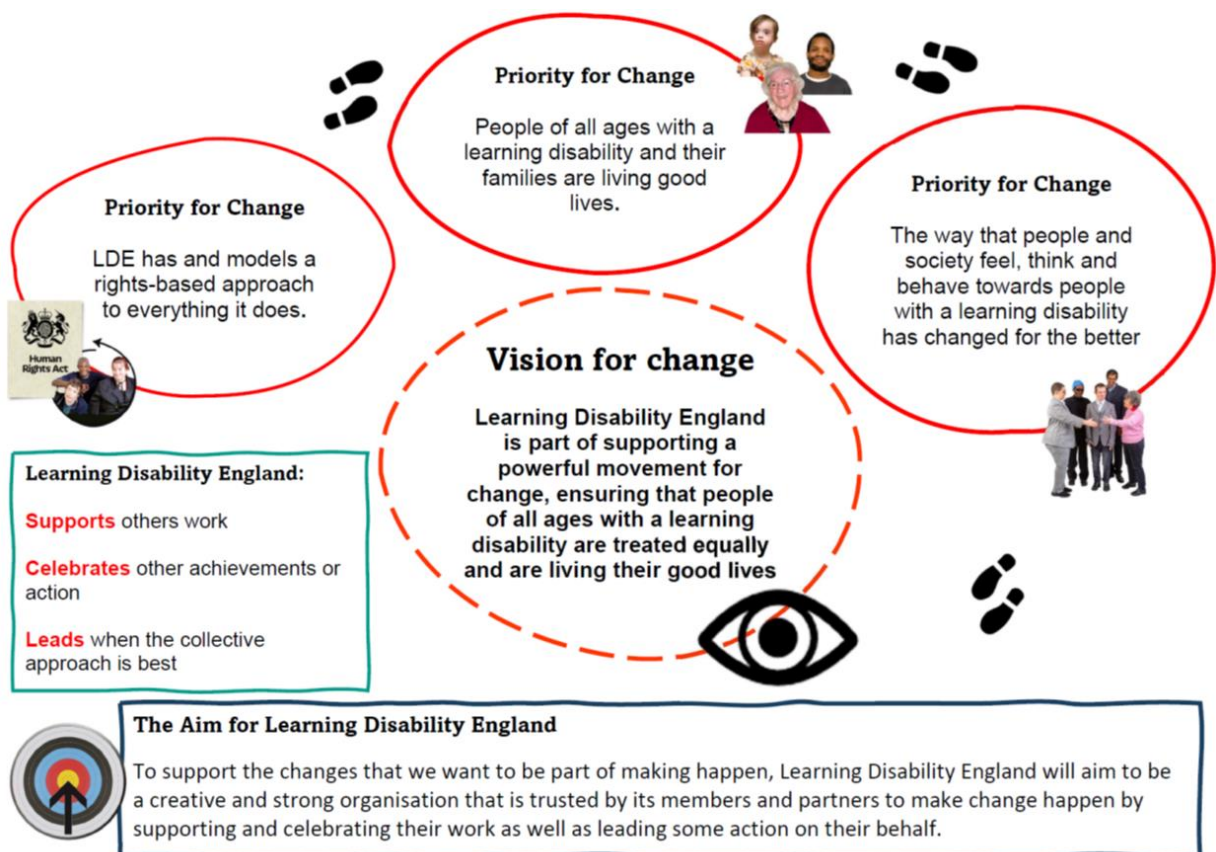
The work Learning Disability England will prioritise is decided by the Representative (Rep) Body.

[Find out more about the Rep Body here](#)



In 2022 the Rep Body and Trustees worked together on a vision for change.

The vision for change says how Learning Disability England will work and what it will focus on:



The full vision for change is [here](#).

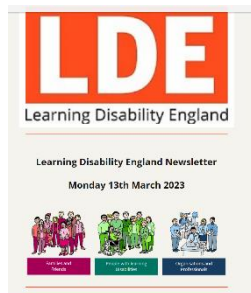
All Learning Disability England's work aims to move towards the vision.

What Learning Disability England did between April 2022 – March 2023



Informing and supporting members.

We helped the three 'voice groups' of our members get the information they needed and also heard from different people about their work or ideas.



We sent 59 weekly or special information newsletters to 2000 people who are members or part of a member organisation or group.

More than half of those people read the newsletter most weeks



In September 2022 we set up a Cost-of-Living information hub on the website

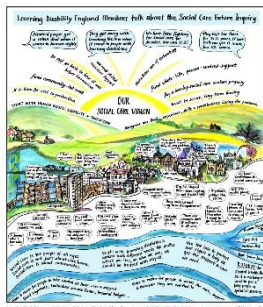
It includes information about the support people can get, where to find advice and about any campaigns.

More than 3,000 people visited the hub in the year



Campaigning and influencing on what matters to people with learning disabilities to help people get a good life.

We helped members to be heard on consultations which were important to them. These included:



- Human Rights Act changes consultation
- Social Care in the future by the Fabian Society inquiry
- Down Syndrome Act call for evidence
- The Covid inquiry being accessible to people with learning disabilities

Representing members' priorities to inform policy and change attitudes.

[Good Lives](#) brings together people's ideas about what is needed for everyone with learning disabilities to be able to live their good life.

It is led by what people with learning disabilities say is important.

It is a vision for change with actions for everyone who wants to get involved, by campaigning or changing how they work now.

Anyone can get involved or use it to help with their work.



This year the Learning Disability England team worked to get more people involved in making Good Lives happen by.

- Presenting at 65 conferences or workshops
- Meeting with 40 member organisations to talk about how they will support Good Lives

Good Lives was also included in papers, reports or blogs from other organisations including:

- Learning Disability Today
- The Local Government Association
- Social Care Futures



In 2023 Members are starting to develop a Good Lives manifesto to influence all political parties' plans.



Supporting good practice and finding solutions through the 'voice groups' working together.

We bring members together to learn from each other or understand new ideas or research together.

This year we held:

- 4 members network meetings
- 10 members only webinars



- 3 public webinars



More than 600 places were used at the meetings.

These meetings were about research findings, information on rights, or members sharing their work.

Action Towards Good Lives

Learning Disability England Annual Conference 2023

Online: Wednesday 15th March 2023
 London: Wednesday 22nd March 2023
 York: Tuesday 28th March 2023

LDE
Learning Disability England

Logos: Achieve together, ambient, Choice Support, dimensions, Look Ahead, MacIntyre, EABILITY, Anthony Collins



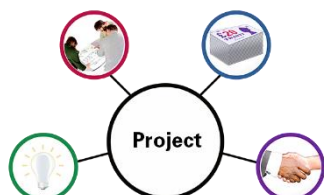
There were three Learning Disability England conferences in March 2023.

440 people came to the 3 conferences.



At the conferences 62 different speakers shared what they are doing to support Good Lives.

You can find out more and see the recordings [here](#)



Learning and supporting partners through projects or research.

Learning Disability England works with partners and members to help them get involved in issues which members think are important.

This year that included [several projects](#) about the experiences of people from ethnic minority communities with learning disabilities and their families.

At Learning Disability England, we will be carrying on working to support the inclusion of people with learning disabilities from ethnic minorities by changing how we work as well as promoting the voice of people from ethnic minorities.

Learning Disability England is one of six organisations in the [Valuing People Alliance](#).

As one of the members of the Health and Wellbeing Alliance, they work with the Department of Health and Social Care, NHS England, and the UK Health Security Agency.

They help to ensure policies and plans include people with learning disabilities.



There was also work on:

- Including people in research projects
- Future plans for stopping people being given too much medication (STOMP and STAMP)
- Health Action Plans
- Housing and rights
- Advocacy and people being heard

Partnerships are important to Learning Disability England

Most of our work is done in partnership with members or other partners.

JMS Trust is an important partner, and we share a worker with them

Learning Disability England is part of the ARC Learning Disability Research Unit

Risks

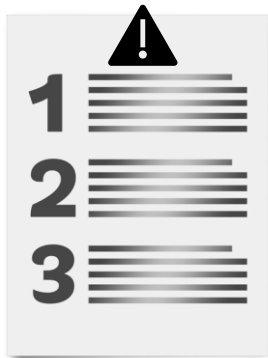


The Trustees look at the risks Learning Disability England might face.

Risks are the things that might go wrong.



Then they decide what they can do to make it less likely that these things happen, or to protect Learning Disability England if they do happen.



The biggest risks Trustees have worked on this year are:

- Membership numbers
- The time and space that a small team has to get all the jobs done
- How the cost-of-living increases might affect Learning Disability England members and Learning Disability England itself
- The economic and political changes that are happening



About the money



The total income for the year was £357,142.

Income is the money that came into Learning Disability England.



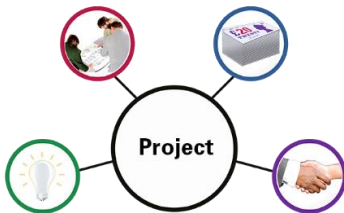
£179,245 came from grant funding.

£102,258 came from membership payments.

£7,188 came from donations.

£54,373 came from conferences, workshops, and advice.

Learning Disability England got money from/for these grants and projects:



- Esmee Fairbairn Foundation
- VCSE Health and Wellbeing Alliance
- BAME Self Advocacy NHS England (Equal Treatment)
- Covid and People with Learning Disabilities Impact Research



The biggest things Learning Disability England spent money on were:

- £183,986 on staff costs
- £181,436 working on projects and other work



The total funds that were brought forward were £165,872.

This means money that Learning Disability England still had money in the bank at the end of the year.



Review of an independent examiner



Each year our annual accounts must be checked by an independent examiner.



An independent examiner is someone who is a qualified accountant and separate from the organisation.



The independent examiner has checked these accounts.

They found that these accounts followed all the rules.



More information



You can find out more by looking at the website

<https://www.learningdisabilityengland.org.uk/>



If you have any questions, please email info@LDEngland.org.uk or phone 0300 111 044.

Approved by Trustees on
05 October 2023

Sarah Maguire, Trustee and Director

Independent Examiners' Report to the Trustees of Learning Disability England

Respective responsibilities of charity trustees and examiner

The trustees (who are also the directors of the company for the purposes of company law) are responsible for the preparation of the accounts. The charity's trustees consider that an audit is not required for this year under section 144 of the Charities Act 2011 (the Charities Act) and that an independent examination is needed. The charity's gross income exceeded £250,000 and

I am qualified to undertake the examination by being a qualified member of
Institute of Chartered Accountants in England and Wales.

Having satisfied myself that the charity is not subject to audit under company law, and is eligible for independent examination, it is my responsibility to:

- examine the accounts under section 145 of the 2011 Charities Act,
- to follow the procedures laid down in the general Directions given by the Charity Commission (under section 145(5)(b) of the Charities Act; and
- state whether particular matters have come to my attention.

Basis of independent examiner's statement

My examination was carried out in accordance with general Directions given by the Charity Commission. An examination includes a review of the accounting records kept by the charity and a comparison of the accounts presented with those records. It also includes consideration of any unusual items or disclosures in the accounts, and seeking explanations from the trustees concerning any such matters. The procedures undertaken do not provide all the evidence that would be required in an audit, and consequently no opinion is given as to whether the accounts present a 'true and fair' view and the report is limited to those matters set out in the statement below.

Independent examiner's statement

In connection with my examination, no matter has come to my attention to indicate that:

- accounting records have not been kept in accordance with section 386 of the Companies Act 2006;
- the accounts do not accord with such records;
- where accounts are prepared on an accruals basis, whether they fail; or to comply with relevant accounting requirements under section 396 of the Companies Act 2006, or are not consistent with the Charities SORP (FRS102)
- any matter which the examiner believes should be drawn to the attention of the reader to gain a proper understanding of the accounts.

R B Welch FCA
Chartered Accountant
P&W Social Accountants
10 Newent Road
Birmingham
B31 2ED

5th October 2023

**Learning Disability England
Statement of Financial Activities
incorporating an Income and Expenditure Account
1 April 2022 to 31 March 2023**

	Notes	Current year Unrestricted Funds 2023 £	Current year Restricted Funds 2023 £	Current year Total Funds 2023 £
Income & Endowments				
Donations	2	7,188	-	7,188
Income from charitable activities	2	227,656	108,220	335,876
Other income	2	14,078	-	14,078
Total income		<u>248,922</u>	<u>108,220</u>	<u>357,142</u>
Expenditure				
Expenditure on charitable activities	3	247,617	125,735	373,352
Total expenditure		<u>247,617</u>	<u>125,735</u>	<u>373,352</u>
Net (expenditure) / income for the year		1,305	(17,515)	(16,210)
Transfers between funds	11	-	-	-
Net (expenditure) / income after transfers		<u>1,305</u>	<u>(17,515)</u>	<u>(16,210)</u>
Net movement in funds		<u>1,305</u>	<u>(17,515)</u>	<u>(16,210)</u>
Reconciliation of funds:-				
Total funds brought forward		164,567	17,515	182,082
Total funds carried forward		<u>165,872</u>	<u>-</u>	<u>165,872</u>

The statement of financial activities includes all gains and losses in the year.

All incoming resources and resources expended derive from continuing activities.

**Learning Disability England
Statement of Financial Activities
incorporating an Income and Expenditure Account
1 April 2021 to 31 March 2022**

	Notes	Current year Unrestricted Funds 2022 £	Current year Restricted Funds 2022 £	Current year Total Funds 2022 £
Income & Endowments				
Donations	2	22,301	-	22,301
Income from charitable activities	2	146,483	180,435	326,918
Other income	2	7	-	7
Total income		<u>168,791</u>	<u>180,435</u>	<u>349,226</u>
Expenditure				
Expenditure on charitable activities	3	120,901	162,920	283,821
Total expenditure		<u>120,901</u>	<u>162,920</u>	<u>283,821</u>
Net (expenditure) / income for the year		47,890	17,515	65,405
Transfers between funds	11	-	-	-
Net (expenditure) / income after transfers		<u>47,890</u>	<u>17,515</u>	<u>65,405</u>
Net movement in funds		<u>47,890</u>	<u>17,515</u>	<u>65,405</u>
Reconciliation of funds:-				
Total funds brought forward		116,677	-	116,677
Total funds carried forward		<u>164,567</u>	<u>17,515</u>	<u>182,082</u>

The statement of financial activities includes all gains and losses in the year.

All incoming resources and resources expended derive from continuing activities.

Learning Disability England
Registered number:
Balance Sheet
as at 31 March 2023

04233275

	Notes	2023 £	2022 £
Fixed assets			
Tangible assets	8	716	1,019
		716	-
Current assets			
Debtors	9	35,316	80,808
Cash at bank and in hand		342,059	411,222
		377,375	492,030
Creditors: amounts falling due within one year	10	(212,219)	(310,967)
Net current assets		165,872	181,063
Net Assets		165,872	182,082
The funds of the charity			
Unrestricted funds	11	165,872	164,567
Restricted funds	11	-	17,515
Total funds		165,872	182,082

The Trustees are satisfied that the charitable company is entitled to exemption from the requirement to obtain an audit under section 477 of the Companies Act 2006. However, in accordance with section 145 of the Charities Act 2011, the accounts have been examined by an Independent Examiner.

The members have not required the company to obtain an audit in accordance with section 476 of the Act.

The Trustees acknowledges their responsibilities for complying with the requirements of the Companies Act 2006 with respect to accounting records and the preparation of accounts.

The accounts have been prepared and delivered in accordance with the special provisions applicable to companies subject to the small companies regime.

The accounts have been prepared in accordance with the provisions in Part 15 of the Companies Act 2006 applicable to companies subject to the small companies regime and in accordance with the Financial Reporting Standard for Smaller Entities (effective April 2008).

Approved by order of the board of trustees on 5th October 2023 and signed on its behalf by:



Sarah Maguire
 Director and Trustee

**Learning Disability England
Notes to the Accounts
Statement of Financial Activities**

1 Accounting policies

Basis of preparation

The financial statements of the charitable company, which is a public benefit entity under FRS 102, have been prepared in accordance with the Charities SORP (FRS 102) 'Accounting and Reporting by Charities: Statement of Recommended Practice applicable to charities preparing their accounts in accordance with the Financial Reporting Standard applicable in the UK and Republic of Ireland (FRS 102) (effective 1 January 2019)', Financial Reporting Standard 102 'The Financial Reporting Standard applicable in the UK and Republic of Ireland' and the Companies Act 2006. The financial statements have been prepared under the historical cost convention.

The reporting currency is £ Sterling.

Tangible fixed assets

Tangible fixed assets are measured at cost less accumulative depreciation and any accumulative impairment losses. Depreciation is provided on all tangible fixed assets at rates calculated to write off the cost, less estimated residual value, of each asset evenly over its expected useful life, as follows:

Plant & equipment	over 4 years
-------------------	--------------

Creditors

Short term creditors are measured at transaction price (which is usually the transaction price).

Grant income is deferred if it relates to specific expenditure which has not yet been incurred. This expenditure will be a condition of the grant.

Debtors

Debtors are measured at their recoverable amount at the balance sheet date.

Financial Instruments

The charity has financial assets and financial liabilities of a kind that qualify as basic financial instruments. They are recognised at transaction value and subsequently measured at their settlement value.

Income

All income is recognised in the statement of financial activities once the charity has entitlement to the funds, it is probable that the income will be received and the amount can be measured reliably.

Donations are accounted for on a receivable basis.

Grants are credited to the statement of financial activities when received or receivable whichever is earlier. Where unconditional entitlement to grants receivable is dependent upon fulfilment of conditions within the Charity's control, the income is recognised when there is sufficient evidence that conditions will be met. Where there is uncertainty as to whether the Charity can meet such conditions the incoming resource is deferred.

Expenditure

Liabilities are recognised as expenditure as soon as there is a legal or constructive obligation committing the charity to that expenditure, it is probable that a transfer of economic benefits will be required in settlement and the amount of the obligation can be measured reliably. Expenditure is accounted for on an accruals basis and has been classified under headings that aggregate all cost related to the category. Where costs cannot be directly attributed to particular headings they have been allocated to activities on a basis consistent with the use of resources.

Costs allocated to charitable activities include the direct costs of providing services and running projects.

Learning Disability England
Notes to the Accounts
Statement of Financial Activities

1 Accounting policies *(continued)*

Pensions

Employees of the charity are entitled to join a defined contribution scheme. The pension costs represent amounts payable by the charity during the period.

Taxation

The charity is exempt from corporation tax on its charitable activities.

Fund Accounting

Unrestricted general funds may be used in accordance with the charity's objects at the discretion of the trustees. Designated funds are amounts set aside by the trustees out of unrestricted general funds for specific future purposes or projects.

Restricted funds can only be used for particular restricted purposes within the objects of the charity. Restrictions arise when specified by the donor or when funds are raised for a particular restricted purpose.

**Learning Disability England
Notes to the Accounts
Statement of Financial Activities**

2 Income	Current year Unrestricted 2023	Current year Restricted 2023	Current year Total Funds 2023
1 April 2022 to 31 March 2023			
Donations	£	£	£
Donations	7,188	-	7,188
Total Donations	<u>7,188</u>	<u>-</u>	<u>7,188</u>
Charitable Activities			
Advice, conferences and training	54,373	-	54,373
Membership Subscriptions	102,258	-	102,258
Grant Income	71,025	108,220	179,245
Total Income from Charitable Activities	<u>227,656</u>	<u>108,220</u>	<u>335,876</u>
Other Income			
Other income	14,078	-	14,078
Total Other Income	<u>14,078</u>	<u>-</u>	<u>14,078</u>
Total Income	<u>248,922</u>	<u>108,220</u>	<u>357,142</u>
Prior Year Income			
1 April 2021 to 31 March 2022	Prior year Unrestricted 2022	Prior year Restricted 2022	Prior year Total Funds 2022
Donations	£	£	£
Donations	22,301	-	22,301
Total Donations	<u>22,301</u>	<u>-</u>	<u>22,301</u>
Charitable Activities			
Advice, conferences and workshops	18,633	-	18,633
Membership Subscriptions	94,650	-	94,650
Grant Income	33,200	180,435	213,635
Total Income from Charitable Activities	<u>146,483</u>	<u>180,435</u>	<u>326,918</u>
Bank Interest	7	-	7
Total Other Income	<u>7</u>	<u>-</u>	<u>7</u>
Total Income	<u>168,791</u>	<u>180,435</u>	<u>349,226</u>
Donations included a donation of £20,000 from Mrs Lathigra's will.			

**Learning Disability England
Notes to the Accounts
Statement of Financial Activities**

3 Expenditure on charitable activities

	2023 £	2022 £
Direct expenditure (note 4)	365,422	268,800
Support expenditure (note 5)	7,930	15,021
Total	<u>373,352</u>	<u>283,821</u>

4 Direct expenditure on charitable activities

	2023 £	2022 £
Staff costs (note 7)	183,986	176,962
Conference costs	13,274	-
External project delivery and resource costs	159,643	86,981
Insurance	4,642	4,667
Marketing and advertising	90	-
Professional fees	2,600	190
Room hire	1,187	-
Direct expenditure	<u>365,422</u>	<u>268,800</u>

Due to the pandemic, the conference was held online in 2022.

5 Support expenditure on charitable activities

	2023 £	2022 £
Administrative overheads	764	341
Premises expenses	200	149
Software	80	949
Telephone costs	768	994
Web & CRM development & hosting	3,976	11,298
Depreciation	352	340
	<u>6,140</u>	<u>14,071</u>
Examination fee	950	950
Governance, training & review	840	-
Trustee's expenses (note 6)	-	-
	<u>1,790</u>	<u>950</u>
Support expenditure	<u>7,930</u>	<u>15,021</u>

6 Trustees' Remuneration and Benefits

Neither the trustees nor any persons connected with them received remuneration for any for their services. Where claimed, expenses for travel and subsistence are reimbursed. The amount claimed during the period was £Nil (2022: £Nil).

**Learning Disability England
Notes to the Accounts
Statement of Financial Activities**

7 Staff Costs

	2023 £	2022 £
Salary Costs	134,513	137,980
Tax and National Insurance	36,144	28,656
Pension Costs	9,310	8,805
Other Costs including Training & Welfare	4,019	1,521
Total salaries, wages and related costs	183,986	176,962

The average number of employees during the year was as follows:

	2023 £	2022 £
Full time equivalents	5.5	5.5

No employees received emoluments in excess of £60,000.

8 Tangible fixed assets

	Plant and Equipment £
Cost	
At 1 April 2022	6,527
Additions during the year	49
At 31st March 2023	6,576
Depreciation	
At 1 April 2022	5,508
Charge for the year	352
At 31st March 2023	5,860
Net book value	
At 1 April 2022	1,019
At 31st March 2023	716

9 Debtors

	2023 £	2022 £
Trade debtors	34,349	80,359
Prepayments and accrued income	967	449
Total debtors	35,316	80,808

10 Creditors: amounts falling due within one year

	2023 £	2022 £
Trade Creditors	-	-
Accruals	4,843	5,250
Deferred Income	32,322	39,232
Grant & Project Balances	172,932	251,485
Other Creditors	2,122	15,000
Total creditors	212,219	310,967

**Learning Disability England
Notes to the Accounts
Statement of Financial Activities**

10 Creditors: amounts falling due within one year (continued)

Within grant & project balances are amounts received with preconditions attached. These amounts are released into income when the preconditions are met.

This includes restricted funds of:

SW Connections: £14,740
MMU Covid Impact research £27,946
BAME Self Advocacy NHSE (Equal Treatment): £27,832

11 Fund Balances

At 31 March 2023, funds are analysed as follows:

	At 1 April 2022	Net movement	Transfers	At 31
	£	in funds	between	March 2023
		£	funds	£
			£	
Restricted Funds				
Esmee Fairburn	17,515	(17,515)	-	-
VCSE Health and Wellbeing Alliance	-	-	-	-
BAME Self Advocacy NHSE (Equal Treatment)	-	-	-	-
MMU Covid Impact Research	-	-	-	-
NHSE Covid Recovery	-	-	-	-
Other restricted funds	-	-	-	-
Total Restricted Funds	17,515	(17,515)	-	-
Unrestricted Funds	164,567	1,305	-	165,872
Total Charity Funds	182,082	1,305	-	165,872
Net movements included in the above are as follows:		-		
		Incoming	Resources	Movement in
		resources	expended	funds
		£	£	£
Restricted funds				
Esmee Fairburn	2,500	(20,015)	(17,515)	
VCSE Health and Wellbeing Alliance	19,478	(19,478)	-	
BAME Self Advocacy NHSE (Equal Treatment)	24,467	(24,467)	-	
MMU Covid Impact Research	10,475	(10,475)	-	
NHSE Covid Recovery	51,300	(51,300)	-	
Other restricted funds	-	-	-	
	108,220	(125,735)	-	
Unrestricted funds	248,922	(247,617)	1,305	
	357,142	(373,352)	(16,210)	

**Learning Disability England
Notes to the Accounts
Statement of Financial Activities**

11 Fund Balances *(continued)*

At 31 March 2022, funds were analysed as follows:

	At 1 April 2021 £	Net movement in funds £	Transfers between funds £	At 31 March 2022 £
Restricted Funds				
Esmee Fairburn	-	17,515	-	17,515
VCSE Health and Wellbeing Alliance	-	-	-	-
BAME Self Advocacy NHSE (Equal Treatment)	-	-	-	-
MMU Covid Impact Research	-	-	-	-
NHSE Covid Recovery	-	-	-	-
Other restricted funds	-	-	-	-
	-	-	-	-
Total Restricted Funds	-	17,515	-	17,515
Unrestricted Funds	116,677	47,890	-	164,567
Total Charity Funds	116,677	65,405	-	182,082
		Incoming resources £	Resources expended £	Movement in funds £
Restricted funds				
Esmee Fairburn		64,215	(46,700)	17,515
VCSE Health and Wellbeing Alliance		34,250	(34,250)	-
BAME Self Advocacy NHSE (Equal Treatment)		21,000	(21,000)	-
MMU Covid Impact Research		18,870	(18,870)	-
NHSE Covid Recovery		41,100	(41,100)	-
Other restricted funds		1,000	(1,000)	-
		180,435	(162,920)	17,515
Unrestricted funds		168,791	(120,901)	47,890
		349,226	(283,821)	65,405

**Learning Disability England
Notes to the Accounts
Statement of Financial Activities**

11 Fund Balances *(continued)*

Restricted Funds

Esme Fairburn

Grant to support some of organisational core costs, to help ensure that the needs and wishes of learning disabled people are accurately represented in policy and decision making at national and local level. In addition Esme Fairburn granted LDE an unrestricted Covid response and support grant.

DHSC Covid 19 Support Grant

Grant funding to increase availability of support to people in England during COVID-19 2020/21 through providing Information and resources, supporting practice and operational change in response to Covid 19, and delivering a small grants programme aimed at reducing isolation and building resilience in local groups and their members.

CAF DCMS Resilience fund

Grant to maintain the extended information hub, dissemination, training and peer support activities for people with learning disabilities, their families and paid supporters that Covid 19 necessitated.

RTR Trust Sharing to be Stronger

Grant to Learning Disability England for the Sharing to be Stronger Together project that brought together self advocacy groups across England to share examples of self advocacy making a difference and contribute to the building of a national self-advocacy movement.

VCSE Health and Wellbeing Alliance

This grant which is provided by The Department of Health and Social Care for the purpose of supporting the Health and Wellbeing Programme through facilitating integrated working between voluntary and statutory providers. BILD is the lead organisation on this project and is responsible for liaising and reporting to the funders.

BAME Self Advocacy NHSE (Equal Treatment)

NHS England are supporting a project because reports have told them that people with a learning disability from minority ethnic groups do not get equal health care. This project includes aims to empower and support self-advocacy or family led groups to overcome barriers and taboos in relation to speaking up about racism and its impact on access to preventative healthcare and treatment.

MMU Covid Impact Research

This grant funds a project researching how the coronavirus pandemic has changed the lives of people with learning disabilities in the UK.

NHSE Covid Recovery

Funded by NHS England, this grant funds the development of a resource bank open for all self-advocacy groups to use. The resources will focus on easy read material and other tools and information to support people who may have difficulties accessing health services.

Other restricted funds

Donations from Trusts are classed as restricted to the purpose as determined by the donor.

Unrestricted funds

These funds are held for the objectives of the charity, and to provide free reserves for future activities, and, subject to charity legislation are free from all restrictions on their use.

**Learning Disability England
Notes to the Accounts
Statement of Financial Activities**

12 Related Parties

Some trustees are employed by member organisations, membership subscriptions are shown below:

Organisation	Membership package	Trustee
Choice Support	LDE Enhanced member £2,500	Sarah Maguire
SeeAbility	LDE Enhanced member £2,500	Lisa Hopkins
Jan Walmsley Associates	LDE Basic member £195	Jan Walmsley
Look Ahead	LDE Basic member £995	Debbie Neill
Building Bridges CIC	LDE Self advocacy member £25	Liz Tilly
Future Directions CIC	LDE Basic member £995	Paula Braynion

13 Ultimate Controlling Party

The charity is wholly under the control of the board of Trustees.

14 Status of the Charitable Company

The charitable company is limited by guarantee and does not have share capital. The registered office is 134 C/O Anthony Collins Solicitors, Edmund Street, Birmingham, England, B3 2ES.

Its principal activities are the relief of people who are disabled, handicapped (whether physically or mentally) or chronically sick people, their families and carers in particular through the provision of advice, counselling, workshops, training, and advocacy in respect of their housing care or support needs.

The liability of members is limited but is not exceed £1 per member.