

REGISTERED COMPANY NUMBER: 04371133 (England and Wales)
REGISTERED CHARITY NUMBER: 1091387

Report of the Trustees and
Unaudited Financial Statements for the Year Ended 31 March 2023
for
People To Places
(A Company Limited by Guarantee)

People To Places

Report of the Trustees for the Year Ended 31 March 2023

The trustees who are also directors of the charity for the purposes of the Companies Act 2006, present their report with the financial statements of the charity for the year ended 31 March 2023. The trustees have adopted the provisions of Accounting and Reporting by Charities: Statement of Recommended Practice applicable to charities preparing their accounts in accordance with the Financial Reporting Standard applicable in the UK and Republic of Ireland (FRS 102) (effective 1 January 2019).

The financial year 2022/23 showed a gradual recovery from the COVID 19 pandemic. In addition to the loss of people to COVID, we started to see some of the implications for life once the pandemic receded. Our core service of supporting people with mobility services continued with numbers gradually returning. The single biggest issue has been through having to move Shopmobility Maidenhead at short notice which has had an impact on what was otherwise a very positive return to that service.

OBJECTIVES AND ACTIVITIES

Objectives and aims

The object of the charity is to provide a community transport service for such of the inhabitants of the Royal Borough of Windsor & Maidenhead and its neighbourhood who need of such a service because of age, sickness or disability (mental or physical), or poverty, or because of a lack of availability of adequate and safe public passenger services.

People To Places

Report of the Trustees for the Year Ended 31 March 2023

OBJECTIVES AND ACTIVITIES

Review of Achievements and Activities

This section is in two parts:

1. The principle achievements of People to Places
2. Our plans for the coming year and beyond

1. Principal Achievements of the Year

Our principal achievements for the year 2022/23, supported by our generous partners are outlined below:-

Passenger Journeys

The total number of passenger journeys undertaken over the year was 18,680 (2022: 13,776), a 36% increase over the previous year. There is evidence of some impact from the pandemic, but it is more subtle now and primarily affecting our community groups. Community group numbers were 5,080 (2022: 2,586), however the long-term trend for group travel is 6,669 passenger journeys per year pre-pandemic, so a significant reduction for these service users.

On the positive side, our Individual Dial-a-Ride journeys continue to increase which is especially welcome as this is part of the core of the organisation. Over the course of the year, further routes for South Central Ambulance Service's (SCAS) Non-Emergency Patient Transport Service have been added. This is welcome as we often see passengers who we carry on Dial-a-Ride and/or other services too. Our Trips programme has been increasingly popular and we have added more choices, so that now we operate a trip every week on a Wednesday and every other Friday, but we are still sometimes over-subscribed!

In addition, our voluntary car service is now operating and is a welcome supplement to our minibus-based service. The recruitment of suitable volunteers is an ongoing challenge, although one of the features is that individuals can be any age, as long as they are safe drivers, have a clean DBS check and an accessible car!

Mobility Scooter Hires

The total number of mobility scooter hires undertaken over the year was 5,922 (2022: 4,908), this continues the return to normality for our mobility services post-pandemic, but still somewhat down on a "normal" year. However, one particular event had a dramatic negative impact on what otherwise would have been close to a "normal" year.

Shopmobility Maidenhead has been based in the Broadway car park since it opened in February 1996. However, on 31 December 2022, the car park was closed for safety reasons due to a large lump of concrete which fell from the roof. The car park remains closed to date. People to Places are extremely grateful to the Nicholson's Shopping Centre for kindly offering two of their shop spaces to enable the service to restart, which it did on Wednesday 11 January 2023, less than two weeks after the closure. Although the shops provided are fantastic, we are operating without any parking space for our service users and this has had a dramatic impact on them and their ability to access our service.

Between April and December 2022, Shopmobility Maidenhead was operating at 75% of pre-pandemic levels. Since the loss of the parking space, it is under 40%, plus our extended hire service has had to stop in Maidenhead.

People To Places

Report of the Trustees for the Year Ended 31 March 2023

OBJECTIVES AND ACTIVITIES

Shopmobility Windsor is continuing to show a great return, operating at 130% of pre-pandemic long term trends. This is not due to Maidonians heading to Windsor, as there is little over-lap between the two facilities. However, anecdotally, the closure of Shopmobility Slough, operated by a neighbouring organisation has contributed to the general growth in Windsor.

Following the incredible generosity of a legacy from a long-standing supporter, plus a grant from Maidenhead Lions, 22 new mobility scooters plus five manual wheelchairs have been purchased for the service over the year.

Environmental Impact

We have been monitoring our carbon emissions over the course of the year and the amount of Diesel we used was 26,362 litres (2022: 20,874 litres)

This produced 68.8 tonnes of CO2 emissions (2022: 54.5 tonnes of CO2 emissions) based on a formula recommended by the Carbon Trust to calculate these figures.

People to Places are aware of the 2035 deadline by which new petrol and diesel vehicles will not be available for sale. We are considering our options, although it is noted that electric minibuses are still a long way behind their carbon-based equivalents in terms of capacity and distance. In addition, the infrastructure to make this practicable is a long way from being sufficient for our needs. The technology continues to develop and we are looking forward to moving to electric vehicles as soon as it's feasible.

Events

An annual gathering of service users and partner organisations was held in September at which we were pleased to have Paralympian Naomi Riches give a talk on how she overcame challenges to succeed in her sport of canoeing. The aim of the gathering is to give service users the opportunity to meet and share some of their issues and for Trustees, senior staff and volunteers to discuss P2P's previous year and its plans for the coming years.

The CEO has continued to attend Business Network International (BNI) chapter meetings. BNI is a multinational network of businesses which has tens of thousands of chapters around the world. The benefit to P2P has primarily been through the networking where we have been given advice and support from a variety of organisations and plus some fundraising has been undertaken by the chapter.

The CEO has also contributed to the development of an informal group of local charities who have met over the course of 2022/23 and beyond. This group wish to develop a strategic voice with both the Local Authority and the Integrated Care System (ICS) which is the local expression of the NHS. This work is in support of a new level of partnership between the local voluntary & community sector organisations and the two public bodies.

Staff and Volunteers

The story for 2022/23 has been one of renewal and re-invention for our staff and volunteers. Demand for our core community transport services has grown significantly in particular and additional Drivers have been appointed, both paid and in a voluntary capacity. Our partnership with South Central Ambulance Service (SCAS) has developed into 6 routes operating 5 or 6 days a week with the corresponding increase in paid Drivers as well. Our Shopmobility service colleagues have performed excellently, with glowing reviews on Google and through very positive feedback in our service user survey.

People To Places

Report of the Trustees for the Year Ended 31 March 2023

OBJECTIVES AND ACTIVITIES

Due to an ESFA funding opportunity which P2P were successful with, our primary volunteer recruitment activities skewed to a new direction. We had intended to focus on recruiting older people to become P2P volunteer Drivers, but due to changing funding regulations, it ended up being focussed on people who were economically inactive. However, we have had a steady flow of new volunteers come to P2P and we are looking to develop this further through a new partnership with Maidenhead United Football Club aka Maidenhead Magpies in the Community.

In addition, we are planning to recruit a new Volunteer Manager to act as the focus of our developmental work on volunteers into 2023/24.

Vehicles & Mobility Equipment

Our volunteer, Roy Fabry, has tirelessly developed a computer model for the costs of running and maintaining our minibuses. This model is used to work out the order in which we need to replace minibuses and when. Over the course of 2022/23, we were very fortunate to receive a legacy of over £75,000 from an anonymous donor. This unrestricted money was used to further bolster our minibus fleet, so P2P now operates a total of 18 vehicles, although we are planning to retire some in the near future.

Having been able to build up our fleet of mobility equipment, it is very unfortunate that the pressure on the Maidenhead equipment has plummeted to such a degree. We now focus on ensuring the maintenance is on-the-mark for that equipment which doesn't go out as often as would be wanted.

Offices

People to Places are based in three locations: SC House for Community Transport, Shopmobility services in the Nicholson's Shopping Centre, Maidenhead and The Coach Park, Alma Road, Windsor. The anticipated temporary Shopmobility Maidenhead relocation has been delayed; possible temporary locations are currently under review.

We continue to enjoy the support of Seiko U.K. Ltd who kindly provide smart office accommodation and vehicle parking which is rent-free.

Fundraising

The year 2022/23 has seen a reduction in many of the formal aspects of fundraising, however we have benefitted from the ongoing support of many friends:-

- We have received a substantial legacy in the year
- Minibus sponsorship was secured from a number of local businesses
- Support was received from:
 - o Deirdre Cook
 - o Mrs W Spickett
 - o Derek & Angela Clark
 - o BNI Maidenhead Chapter
 - o The Metre Market
 - o And many more individuals and organisations, thank you!
- The continued invaluable support from the Royal Borough of Windsor & Maidenhead, the Louis Baylis (Maidenhead Advertiser) Charitable Trust, Seiko U.K. Ltd and the Nicholson's Shopping Centre enables us to have the confidence to focus on delivering on our services.

People To Places

Report of the Trustees for the Year Ended 31 March 2023

OBJECTIVES AND ACTIVITIES

Marketing and Impact

During the year, there were continued signs of recovery in demand following the pandemic, although the cost-of-living crisis was a major cause of concern for everyone. Anecdotally, there is a blend of COVID-hesitancy, financial concerns and difficulties in accessing our Shopmobility Maidenhead service which together, have had some impact on service usage numbers.

People to Places are still projecting an increase in usage, arising from people returning to going out, the increase in the population and the changing demographics. Therefore, we continue to project a bottleneck in terms of minibus capacity. Much of our work will now be focussed on fundraising or getting people to volunteer as drivers, especially using their own car and to engage in Shopmobility services more.

People to Places work in close partnership with the Local Authority, individuals and representatives of community groups and businesses across the Royal Borough of Windsor & Maidenhead. This approach is taken to maximise opportunities to provide mobility services to local residents and visitors across the Royal Borough.

Service Users

The number of subscribers to People to Places services is showing a good level of bounce back after a difficult two years. In addition, we have significant numbers of people using more than one service, therefore we tend to think in terms of subscribers rather than membership.

A head count of subscribers in the year gives a total of 400 individuals (2022: 405), however, the shopmobility service experienced a net decline of 7 subscribers in the last quarter of the year (and a further drop of 12 subscribers in quarter 1 of 2023/24). Given the first three quarters of 2022/23 showed monthly increases in subscribers for this service, our conclusion is that subscribers are not renewing due to issues at Shopmobility Maidenhead.

Performance Against Targets in 2022/23

Below are our key delivery targets and outcomes for the year:

Objectives	Target		Achievement	
Provision of CT journeys:				
Individuals, Groups, TAPS and Trips:	Baseline 2019/20:	11,775	Achieved:	12,631
All other contracted activity:	Baseline 2019/20:	* 15,512	Achieved:	6,049
Total:	Total Baseline 2019/20:	27,287	Total Achieved:	18,680
Delivery of Shopmobility equipment hires:				
Maidenhead, Windsor and Rambles:	Baseline 2019/20:	6,899	Achieved:	** 5,290
All other equipment provision:	Baseline 2019/20:	617	Achieved:	799
Total:	Total Baseline 2019/20:	7,516	Total Achieved:	6,089

* Within the year 2019/20, P2P was delivering Home to School Transport services and Boyn Grove, Oakbridge and Windsor Day Centres, of which only the Boyn Grove service has continued into 2022/23. This is now supplemented with Non-Emergency Passenger Transport services to the local Ambulance Service.

** Prior to Broadway Car Park closure on 31 December 2022, the Shopmobility service was tracking to 6,720. If this had been achieved, then the Total Achieved would have been 7,519.

People To Places

Report of the Trustees for the Year Ended 31 March 2023

OBJECTIVES AND ACTIVITIES

Generally, we have exceeded the baseline targets except for two areas, Shopmobility Maidenhead and closure of a number of contracted services, both of which were beyond our control. We are, however, extremely proud of our achievements and the way in which our staff and volunteers responded every day.

2. Plans for 2023/24 and Beyond

Estimated outputs for the year 2023/24 are outlined below.

Community Transport

	Target for 2023/24	Outturn for 2022/23	Average Annual Count for pre-Pandemic Period
Individual Dial-a-Ride Journeys	6,000	5,517	4,292
Group Journeys	5,000	5,080	6,669
Trips and Days Out	1,500	706	409
TAPS Journeys	1,000	1,328	905
Total	13,500	12,631	12,275

Other journeys are delivered by P2P but we have little influence on the number of passengers, i.e. Boyn Grove Day Care Centre, Non-Emergency Patient Transport.

Shopmobility

	Target for 2023/24	Outturn for 2022/23	Average Annual Count for pre-Pandemic Period
Shopmobility Maidenhead	2,360	3,981	5,914
Shopmobility Windsor	1,500	1,307	1,023
Extended Hires	70	649	316
Shows & Rambles	150	152	Highly variable
Total	4,080	6,089	7,253

Figures are substantially reduced due to a lowering in the estimate for Shopmobility Maidenhead and extended hires which are estimated at 40% and 23% of pre-pandemic figures based on current experience.

Service Subscribers

	2022/23 Actual				2023/24 Target			
	Start	Left	Joined	End	Start	Left	Joined	End
Dial-a-Ride	243	103	126	266	266	100	120	286
Shopmobility	200	58	98	240	240	75	20	185
TAPS	220	74	59	205	205	150	20	75
Trips	81	25	43	99	99	30	80	149
TOTAL	744	260	326	810	810	355	240	695

People To Places

Report of the Trustees
for the Year Ended 31 March 2023

OBJECTIVES AND ACTIVITIES

Please note that one individual can subscribe to more than one service.

RBWM have informed P2P that they will cease funding the TAPS scheme for the new financial year 2024/25. As entitlement runs for a 12-month period, it is anticipated that the number of joiners will drop, but that some individuals will retain some allowance into 2024/25, which P2P will honour, however, the scheme will finish by 1 July 2024.

OBJECTIVES AND ACTIVITIES

Public benefit

People to Places is committed to enabling as many people with access and mobility issues as possible to access transport across the Royal Borough of Windsor & Maidenhead. In particular, we enable visitors and residents of the Royal Borough to live their lives with dignity, confidence and independence and to enjoy the local area and its facilities.

The benefits we brought to the local community were the continuation of our normal services, plus the added benefits of the shopping & prescription delivery services to any vulnerable adult in the Royal Borough and telephone support services to our members. In addition, we provided minibus transport to particularly vulnerable people to receive their COVID vaccinations and we have contributed three manual wheelchairs for the Maidenhead Vaccination Centre in the Town Hall.

The backdrop of year 2020/21, the main pandemic year, saw the lowest levels of service delivery by People to Places on record. The year being reported on here was still heavily affected as the release of the lockdowns staggered to the full lifting of restrictions in England on 24 February 2022. Throughout the restrictions we continued to provide our full range of services, albeit to variable levels of demand.

People to Places is committed to enabling as many people with access and mobility issues as possible to access transport across the Royal Borough of Windsor & Maidenhead. We enable visitors and residents of the Royal Borough to live their lives with dignity, confidence and independence and to enjoy the local area and its facilities.

Our services allow individuals to overcome the barriers that trap them in their homes, to enable people to socialise with others in new surroundings or to visit essential everyday facilities like shops or day care centres. The impact of our services is to reduce loneliness and isolation amongst our users with consequent benefits to their health and well-being.

The benefits we brought to the local community were the continuation of our community transport and Shopmobility services to any vulnerable adult in the Royal Borough. In addition, we provided minibus transport to particularly vulnerable people to receive their COVID vaccinations and we have contributed four manual wheelchairs for the Maidenhead Vaccination Centre in the Town Hall.

The backdrop of year 2020/21, the main pandemic year, saw the lowest levels of service delivery by People to Places on record. The year being reported on here was not affected by any lockdowns, however the psychological impact of the pandemic and the cost of living crisis is having an impact on people's lives.

During the year, the Board undertook a business planning process to develop our activities for the year. When doing so, the Board considered the Charity Commission's guidance on public benefit and the specific guidance on charities who charge fees. The policies pursued by People to Places comply with the public benefit requirement of charities because the Shopmobility service is not otherwise available through commercial routes and the Community Transport service is significantly more accessible, and of a higher standard, than any other comparable local provision. In addition, despite the increase which was implemented on 1 April 2023, the fares charged for the Dial-a-Ride service are substantially below commercial rates to further reduce barriers to mobility and encourage access to our services.

The key elements of our service and supporting activities are:

- Provision of Dial-a-Ride services for individuals and local community groups

People To Places

Report of the Trustees for the Year Ended 31 March 2023

OBJECTIVES AND ACTIVITIES

- Provision of a Shopmobility service covering the town centres of Windsor and Maidenhead
- Provision of a mobility scooter and manual wheelchair hire service for extended periods
- Provision of a mobility scooter hire service supporting local events such as the Royal Windsor Horse Show
- Provision of a trips programme using our minibuses and a rambles programme using our mobility scooters, to allow people to meet and socialise in different surroundings which are appropriate to their individual needs
- Provision of non-emergency patient transport for South Central Ambulance Service
- Transport and mobility support for other local organisations that meet the same social objectives such as the Home to RBWM Day Care Centre at Boyn Grove.
- Awareness raising for the service across the Royal Borough through a wide variety of media to ensure people are aware of how People to Places can support people with a wide range of access and mobility issues
- Provision of minibus Driver training to the nationally accredited MiDAS standard
- Undertake a wide range of income generation/fund-raising activities to support the service in the short and long term

STRATEGIC REPORT

Principal funding sources

Principal Funding

In 2022/23 People to Places were very fortunate to receive a substantial legacy of over £75,000. This, plus the growth in our SCAS routes and prudent financial management, meant that the financial year 2022/23 saw a positive outturn, which is substantially higher than the previous year.

The funding profile for People to Places demonstrates the wide variety of sources of income we receive:

- Core funding from RBWM for Shopmobility and Dial-a-Ride services
- Fares from individuals and community groups for Dial-a-Ride services slowly returned over the year.
- Income from contracts with RBWM for TAPS and the Boyn Grove Day Care Centre plus SCAS for Non-Emergency Patient Transport.
- Subscription fees and charges for extended scooter hires bounced back well.
- Donations and sponsorship success with our minibus sponsorship programme.
- Grants from local charitable trusts and funds as detailed in the previous section marked Fundraising.
- Support from Seiko UK Ltd and the Nicholson's Shopping Centre in terms of the provision of office accommodation.

The total income for 2023 is £708,268 (2022: £572,285) which is a substantial increase over the previous year. The primary reasons for this increase are the growth in SCAS funding, the growth in individual DaR journeys, the additional gift-in-kind accommodation donation from the Nicholson's Shopping Centre plus the addition of the value for volunteer Driver hours, which has not been included previously.

People To Places

Report of the Trustees for the Year Ended 31 March 2023

STRATEGIC REPORT

Financial review

Investment policy and plan

Under the Memorandum and Articles of Association the charity has the power to make investments, as the Trustees see fit.

Financial security and accessibility are important and reserve funds of the charity are held with challenger banks. Funds not required for immediate use may be held in interest-bearing deposits of not more than 12 months maturity. Trustees will review this policy periodically to reflect good practice.

Investment Plan for 2023/24

In the context where Trustees consider it necessary to hold reserves to cover risks, Trustees also believe it is necessary to retain reserves to ameliorate the impact of the pandemic, the cost-of-living crisis and general economic uncertainties. The surplus in the year means that we are seeking to increase our impact whilst at the same time, wanting to increase our income from fundraising to ensure that we are able to replace some of our older assets.

Reserves policy

It is the intention of the charity that unrestricted funds which have not been designated for a specific use should be maintained at a level equivalent to between three to six month's expenditure to cover the risks and uncertainties of operating as an independent transport operator, and to be able to continue activities in the event of a significant drop in funding while consideration is given to alternative sources of funding.

The Trustees consider that free reserves of at least £150,000 are necessary to cover those risks and uncertainties. Their policy is therefore to build up reserves out of annual operating surpluses as the organisation continues to expand; subject to the prior demand of essential expenditure to equip the charity with up-to-date transport vehicles and mobility equipment needed to maintain the service standards achieved so far.

The general and designated funds represent the unrestricted funds arising from past operating results. The general fund represents the unrestricted funds, which the Trustees are free to use in accordance with the charitable objects. The Trustees have retained a level of reserves sufficient to fund requirements for replacement vehicles and plans for the development of the charity's activities as already outlined.

Details of the movements in tangible fixed assets held during the year are given in the notes to the financial statements. The assets of the charity are available and adequate to fulfil its obligations.

STRUCTURE, GOVERNANCE AND MANAGEMENT

Constitution and Objective

The charity is controlled by its governing document, a deed of trust, and constitutes a limited company, limited by guarantee, as defined by the Companies Act 2006.

STRUCTURE, GOVERNANCE AND MANAGEMENT

Charity constitution

People to Places is an independent registered charity (number 1091387) and a company limited by guarantee (registered company number 04371133). It first registered as a charity on 12 October 1988, re-registering on 22 March 2002 and the company was incorporated on 11 February 2002.

People to Places' objective, as stated in its Memorandum of Association, is:

"The object of the Company is to provide a community transport service for such of the inhabitants of the Royal Borough of Windsor & Maidenhead and its neighbourhood who are in need of such a service because of age, sickness or disability (mental or physical), or poverty, or because of a lack of availability of adequate and safe public services."

Board Appointments, Induction and Training of Trustees and Related Parties

Board Appointments

The process for electing and co-opting Trustees is outlined in the Memorandum and Articles of Association. The Board of Trustees (BoT) is looking to commence fixed terms of office for Trustees; however it has prioritised responding to the pandemic and its impacts first. Given the number of Trustees who have left over the past 12 - 18 months and the new recruits who have joined, we still have a good level of churning, bring fresh perspectives and new ideas in at a BoT level.

BoT members are recruited through a fair and open selection procedure. In making its choice, the Chair and CEO will ensure that the BoT has an appropriate balance of skills and experience as appropriate to the organisation.

New BoT members are given an induction process and training which allows them to understand the role of People to Places and their role as Directors and Trustees. This includes spending time with a Driver on a minibus and visiting a Shopmobility office. Due to the nature of the information they may be party to, they are subject to an enhanced DBS check and a check for compliance with the latest Charity Commission requirements for appropriate individuals to act as Trustees. Training is given on safeguarding and confidentiality too.

All policies plus major and strategic decisions are made by the BoT.

STRUCTURE, GOVERNANCE AND MANAGEMENT

Governance Structure

The Board of Trustees (BoT) is the governing body for the organisation. Trustees are appointed and they serve for up to a year or until death, retirement or a resolution is passed by the Board for their removal. The Annual General Meeting then elects the Board each year.

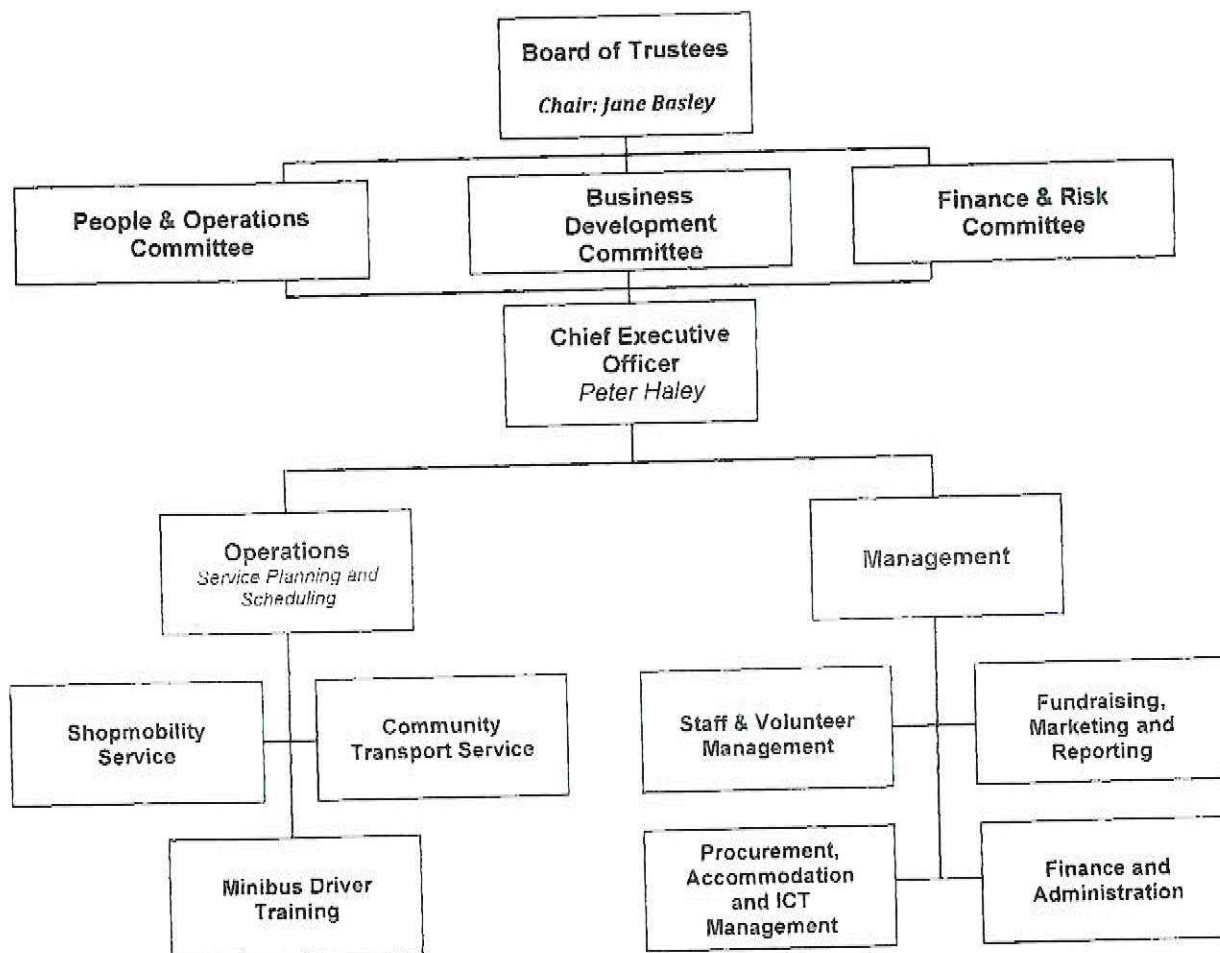
None of the Trustees have any beneficial interest in the company. All of the Trustees are members of the company and guarantee to contribute £1 in the event of winding up the organisation.

The BoT is made up of all the Trustees and meets a minimum of four times a year. It governs the charity and is supported by three Committees. Given the changing pressures on People to Places, they have been subject to further review. The remit and names for these committees were updated in the light of this review to the following:

- Business Development Committee
- Finance & Risk Committee
- People & Operations Committee

Each committee is made up of Trustees and staff. These committees spread the burden of work over several people, making People to Places more resilient and less dependent on any one particular individual.

STRUCTURE, GOVERNANCE AND MANAGEMENT



The chart above is an outline of our services and how we operate.

STRUCTURE, GOVERNANCE AND MANAGEMENT

Risk management

During the year being reported upon, the Board has ensured that policies are in place to cover the management of the organisation, including Health & Safety, Safeguarding of vulnerable adults & children and risk management processes. The Board have a process in place to assess new issues as they arise and to review previous risks to ensure their continued relevancy. They are satisfied that systems are in place to mitigate exposure to the major risks. Managing risk is integral in the planning, financial and operational management cycles of People to Places. Risks are managed in accordance with the Charity Commission guidance CC26 Charities and Risk Management. Specifically, risks are categorized into the following headings:

- Governance Risks
- Operational Risks
- Financial Risks
- Environmental or External Risks
- Compliance (with law and regulation) Risks
- Catastrophic Events Risks

Major risks have been identified and mitigation are being worked on to minimize risks for the long term future of P2P. In particular, our IT infrastructure is in need of developing further to meet the needs of the organisation and the challenges of Windows 11 and other similar software changes.

Furthermore, insurances are arranged on an annual basis that provide the following coverage:

- Public Liability
- Employer Liability
- Trustee Indemnity
- Fleet Minibus
- Shopmobility with provision for third party damage and/or injury
- Cybersecurity cover

The BoT believes that by monitoring the risks in the above categories and in following guidance from regulators and support agencies including the Community Transport Association and the National Federation of Shopmobility, effective systems are established and implemented to mitigate those risks.

The BoT monitors the delivery of services according to their policy framework and it supports the CEO in maintaining and developing the types and levels of service.

People To Places

Report of the Trustees
for the Year Ended 31 March 2023

REFERENCE AND ADMINISTRATIVE DETAILS

Registered Company number
04371133 (England and Wales)

Registered Charity number
1091387

Registered office
Ground Floor
Arena Court
Crown Lane
Maidenhead
Berkshire
SL6 8QZ

Trustees

Jane Basley, Chair
Bruce Adams, Treasurer
Helen Berg, Deputy Chair
Scott MacRae, Safeguarding
Giles Ballard (Appointed 05 December 2022)
Gill Godbold
Adrian Greensmith (Appointed 03 August 2022)
Lisa Hughes (Appointed 03 April 2023)
Charlie Dixon-Prior (Resigned 11 February 2023)
Adam Webb (Appointed 6 June 2022, resigned 19 April 2023)

Chief Executive Officer
Peter Haley

Independent Examiner
Donald Reid Limited
Prince Albert House
18a-20 King Street
Maidenhead
Berkshire
SL6 1EF

People To Places

Report of the Trustees
for the Year Ended 31 March 2023

REFERENCE AND ADMINISTRATIVE DETAILS

Bankers

National Westminster Bank Plc
66 High Street
Maidenhead
SL6 1QA

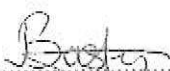
Aldermore Bank plc
1st Floor, Block B, Western House
Lynch Wood
Peterborough
PE2 6FZ

Cambridge & Counties Bank
Charnwood Court
5B New Walk
Leicester
LE1 6TE

Redwood Bank
Suite 101, The Nexus Building
Broadway
Letchworth Garden City
SG6 3TA

Teachers Building Society
Allenview House
Hanham Road
Wimborne
Dorset
BH21 1AG

Report of the trustees, incorporating a strategic report, approved by order of the board of trustees,
as the company directors, on 4/12/23 and signed on the board's behalf by:


.....
J Basley - Trustee

Independent Examiner's Report to the Trustees of
People To Places

Independent examiner's report to the trustees of People To Places ('the Company')

I report to the charity trustees on my examination of the accounts of the Company for the year ended 31 March 2023.

Responsibilities and basis of report

As the charity's trustees of the Company (and also its directors for the purposes of company law) you are responsible for the preparation of the accounts in accordance with the requirements of the Companies Act 2006 ('the 2006 Act').

Having satisfied myself that the accounts of the Company are not required to be audited under Part 16 of the 2006 Act and are eligible for independent examination, I report in respect of my examination of your charity's accounts as carried out under Section 145 of the Charities Act 2011 ('the 2011 Act'). In carrying out my examination I have followed the Directions given by the Charity Commission under Section 145(5) (b) of the 2011 Act.

Independent examiner's statement

Since your charity's gross income exceeded £250,000 your examiner must be a member of a listed body. I can confirm that I am qualified to undertake the examination because I am a member of the Institute of Chartered Accountants in England and Wales, which is one of the listed bodies.

I have completed my examination. I confirm that no matters have come to my attention in connection with the examination giving me cause to believe:

1. accounting records were not kept in respect of the Company as required by Section 386 of the 2006 Act; or
2. the accounts do not accord with those records; or
3. the accounts do not comply with the accounting requirements of Section 396 of the 2006 Act other than any requirement that the accounts give a true and fair view which is not a matter considered as part of an independent examination; or
4. the accounts have not been prepared in accordance with the methods and principles of the Statement of Recommended Practice for accounting and reporting by charities (applicable to charities preparing their accounts in accordance with the Financial Reporting Standard applicable in the UK and Republic of Ireland (FRS 102)).

I have no concerns and have come across no other matters in connection with the examination to which attention should be drawn in this report in order to enable a proper understanding of the accounts to be reached.



Daniel Reid FCA
The Institute of Chartered Accountants in England and Wales

Donald Reid Limited
Prince Albert House
18a-20 King Street
Maidenhead
Berkshire
SL6 1EF

Date: 6th December 2023

People To Places

Statement of Financial Activities
(Incorporating an Income and Expenditure Account)
for the Year Ended 31 March 2023

	Notes	Unrestricted fund £	Restricted funds £	Endowment fund £	31.3.23 Total funds £	31.3.22 Total funds £
INCOME AND ENDOWMENTS FROM						
Donations and legacies	2	132,513	99,922	-	232,435	147,749
Charitable activities	5					
Subscription fees		7,757	-	-	7,757	5,920
Accounts fares - public agencies		407,269	-	-	407,269	400,325
Dial-a-ride		55,100	-	-	55,100	28,612
Other trading activities	3	95	-	-	95	31
Investment income	4	4,642	-	-	4,642	1,768
Other income		970	-	-	970	-
Total		<u>608,346</u>	<u>99,922</u>	<u>-</u>	<u>708,268</u>	<u>584,405</u>
EXPENDITURE ON						
Raising funds	6	1,487	281	-	1,768	2,218
Charitable activities	7					
Direct costs		502,367	40,862	-	543,229	492,155
Other		46,212	57,447	-	103,659	85,348
Total		<u>550,066</u>	<u>98,590</u>	<u>-</u>	<u>648,656</u>	<u>579,721</u>
NET INCOME		58,280	1,332	-	59,612	4,684
Transfers between funds	17	12,689	(12,689)	-	-	-
Net movement in funds		<u>70,969</u>	<u>(11,357)</u>	<u>-</u>	<u>59,612</u>	<u>4,684</u>
RECONCILIATION OF FUNDS						
Total funds brought forward		420,459	20,275	1,702	442,436	437,752
TOTAL FUNDS CARRIED FORWARD		<u>491,428</u>	<u>8,918</u>	<u>1,702</u>	<u>502,048</u>	<u>442,436</u>

The notes form part of these financial statements

People To Places

Balance Sheet
31 March 2023

	Notes	Unrestricted fund £	Restricted funds £	Endowment fund £	31.3.23 Total funds £	31.3.22 Total funds £
FIXED ASSETS						
Tangible assets	13	217,482	-	-	217,482	158,899
CURRENT ASSETS						
Debtors	14	93,608	7,962	-	101,570	95,403
Cash at bank and in hand		287,910	956	1,702	290,568	311,691
		381,518	8,918	1,702	392,138	407,094
CREDITORS						
Amounts falling due within one year	15	(72,572)	-	-	(72,572)	(88,557)
NET CURRENT ASSETS		308,946	8,918	1,702	319,566	318,537
TOTAL ASSETS LESS CURRENT LIABILITIES		526,428	8,918	1,702	537,048	477,436
PROVISIONS FOR LIABILITIES	16	(35,000)	-	-	(35,000)	(35,000)
NET ASSETS		491,428	8,918	1,702	502,048	442,436
FUNDS						
Unrestricted funds	17				491,428	420,459
Restricted funds					8,918	20,275
Endowment funds					1,702	1,702
TOTAL FUNDS					502,048	442,436

The charitable company is entitled to exemption from audit under Section 477 of the Companies Act 2006 for the year ended 31 March 2023.

The members have not required the company to obtain an audit of its financial statements for the year ended 31 March 2023 in accordance with Section 476 of the Companies Act 2006.

The trustees acknowledge their responsibilities for

- ensuring that the charitable company keeps accounting records that comply with Sections 386 and 387 of the Companies Act 2006 and
- preparing financial statements which give a true and fair view of the state of affairs of the charitable company as at the end of each financial year and of its surplus or deficit for each financial year in accordance with the requirements of Sections 394 and 395 and which otherwise comply with the requirements of the Companies Act 2006 relating to financial statements, so far as applicable to the charitable company.

The notes form part of these financial statements

People To Places

Balance Sheet - continued
31 March 2023

The financial statements were approved by the Board of Trustees and authorised for issue on
.....4/13/23..... and were signed on its behalf by:


.....
J Basley - Trustee

The notes form part of these financial statements

People To Places

Cash Flow Statement
for the Year Ended 31 March 2023

	Notes	31.3.23 £	31.3.22 £
Cash flows from operating activities			
Cash generated from operations	1	74,585	26,205
Net cash provided by operating activities		<u>74,585</u>	<u>26,205</u>
Cash flows from investing activities			
Purchase of tangible fixed assets		(102,650)	(49,154)
Sale of tangible fixed assets		2,300	-
Interest received		4,642	1,768
Net cash used in investing activities		<u>(95,708)</u>	<u>(47,386)</u>
Change in cash and cash equivalents in the reporting period		<u>(21,123)</u>	<u>(21,181)</u>
Cash and cash equivalents at the beginning of the reporting period		<u>311,691</u>	<u>332,872</u>
Cash and cash equivalents at the end of the reporting period		<u><u>290,568</u></u>	<u><u>311,691</u></u>

The notes form part of these financial statements

Notes to the Cash Flow Statement
for the Year Ended 31 March 2023

1. RECONCILIATION OF NET INCOME TO NET CASH FLOW FROM OPERATING ACTIVITIES

	31.3.23 £	31.3.22 £
Net income for the reporting period (as per the Statement of Financial Activities)	59,612	4,684
Adjustments for:		
Depreciation charges	42,737	38,798
Profit on disposal of fixed assets	(970)	-
Interest received	(4,642)	(1,768)
Increase in debtors	(6,167)	(6,396)
Decrease in creditors	(15,985)	(9,113)
Net cash provided by operations	<u>74,585</u>	<u>26,205</u>

2. ANALYSIS OF CHANGES IN NET FUNDS

	At 1.4.22 £	Cash flow £	At 31.3.23 £
Net cash			
Cash at bank and in hand	311,691	(21,123)	290,568
Total	<u>311,691</u>	<u>(21,123)</u>	<u>290,568</u>

The notes form part of these financial statements

1. ACCOUNTING POLICIES

Basis of preparing the financial statements

The financial statements of the charitable company, which is a public benefit entity under FRS 102, have been prepared in accordance with the Charities SORP (FRS 102) 'Accounting and Reporting by Charities: Statement of Recommended Practice applicable to charities preparing their accounts in accordance with the Financial Reporting Standard applicable in the UK and Republic of Ireland (FRS 102) (effective 1 January 2019)', Financial Reporting Standard 102 'The Financial Reporting Standard applicable in the UK and Republic of Ireland' and the Companies Act 2006. The financial statements have been prepared under the historical cost convention.

People to Places meets the definition of a public benefit entity under FRS 102.

Critical accounting judgements and key sources of estimation uncertainty

Estimates and judgments are continually evaluated and are based on historical experience and other factors, including expectations of future events that are believed to be reasonable under the circumstances.

Critical accounting estimates and assumptions:

The company makes estimates and assumptions concerning the future. The resulting accounting estimates and assumptions will, by definition, seldom equal the related actual results. The estimates and assumptions that have a significant risk of causing a material adjustment to the carrying amounts of assets and liabilities within the next financial year are discussed below.

Critical areas of judgment:

Depreciation

Tangible fixed assets are depreciated over their useful economic lives. The actual lives of the assets are assessed annually and may vary depending on a range of factors.

Income

For legacies, entitlement is taken as the earlier of the date on which either: the company is aware that probate has been granted, the estate has been finalised and notification has been made by the executor(s) to the Trust that a distribution will be made, or when a distribution is received from the estate. Receipt of a legacy, in whole or in part, is only considered probable when the amount can be measured reliably and the company has been notified of the executor's intention to make a distribution. Where legacies have been notified to the company, or the company is aware of the granting of probate, and the criteria for income recognition have not been met, then the legacy is treated as a contingent asset and disclosed if material.

Donated services or facilities are recognised when the company has control over the item, any conditions associated with the donated item have been met, the receipt of economic benefit from the use of the company of the item is probable and that economic benefit can be measured reliably. In accordance with the Charities SORP (FRS 102), the general volunteer time of the Friends is not recognised and refer to the Trustees' report for more information about their contribution.

1. ACCOUNTING POLICIES - continued

Income

On receipt, donated professional services and donated facilities are recognised on the basis of the value of the gift to the company which is the amount the company would have been willing to pay to obtain services or facilities of equivalent economic benefit on the open market; a corresponding amount is then recognised in expenditure in the period of receipt.

Income from donations and special efforts is recorded on a receipts basis. All other income is recorded on an accruals basis. Legacies and similar incoming resources are included in the year in which they are receivable, which is when the charity becomes entitled to the resources. Where specific conditions imposed by the donor would restrict the use of unspent funds the income is taken directly to the relevant restricted fund.

Grants receivable and local authority grants are credited to the Statement of Financial Activities in the year to which the charity becomes entitled.

Expenditure

Costs of generating funds are costs incurred in attracting voluntary income, and those incurred in trading activities that raise funds.

Charitable activities and Governance costs are costs incurred on the company's operations, including support costs and costs relating to the governance of the company apportioned to charitable activities.

Costs of generating funds relate to expenditure incurred on fundraising activities undertaken and publicising the charity and are recognised on an accruals basis.

Expenditure relating to charitable activities is expenditure incurred for the provision of a community transport service for such of its inhabitants of the Royal Borough of Windsor & Maidenhead and its environs who are in need of such a service due to age, sickness or disability (mental or physical), poverty or because of a lack of availability of adequate and safe passenger service. This includes relevant administration costs involved with such activities. All such expenditure is recognised on an accruals basis.

Governance costs represent such professional costs involved in the overall governance and administration of the charity that cannot be reasonably allocated to other cost headings, and includes external accountancy fees.

Tangible fixed assets

Depreciation is provided at the following annual rates in order to write off each asset over its estimated useful life.

Shopmobility assets	- at varying rates on cost
Fixtures and fittings	- 25% on cost
Motor vehicles	- at varying rates on cost

A review for impairment of a fixed asset is carried out if events or changes in circumstances indicate that the carrying value of any fixed asset may not be recoverable. Shortfalls between the carrying value of fixed assets and their recoverable amounts are recognised as impairments. Impairment losses are recognised in the Statement of financial activities incorporating income and expenditure account.

1. ACCOUNTING POLICIES - continued

Taxation

The charity is exempt from corporation tax on its charitable activities.

Fund accounting

General funds are unrestricted funds which are available for use at the discretion of the Trustees in furtherance of the general objectives of the company and which have not been designated for other purposes.

Designated funds comprise unrestricted funds that have been set aside by the Trustees for particular purposes.

Restricted funds are funds which are to be used in accordance with specific restrictions imposed by donors or which have been raised by the company for particular purposes. The costs of raising and administering such funds are charged against the specific fund. The aim and use of each restricted fund is set out in the notes to the financial statements.

The restricted funds comprise of two main elements, the main one being the combined Gift-in-Kind/Volunteer Time contributed by our partners over the course of the year. This is higher this year due to the Nicholson's Shopping Centre kindly hosting our Shopmobility service following the closure of the Broadway Car Park on New Years Eve. The second element is a grant from the ESFA towards a specific training programme to encourage volunteering amongst people with who are economically inactive in East Berkshire.

Previously, and in accordance with the Charities SORP (FRS 102), the general volunteer time of our supporters has not been recognised. However, given the detailed information on our volunteer Drivers contributions and the equality of their role with paid Drivers, it is felt that their contribution meets the requirements of the SORP and therefore can be included in the financial statements for the first time. Refer to Note 11 to the financial report for more information.

Hire purchase and leasing commitments

Rentals paid under operating leases are charged to the Statement of Financial Activities on a straight line basis over the period of the lease.

Pension costs and other post-retirement benefits

The charitable company operates a defined contribution pension scheme. Contributions payable to the charitable company's pension scheme are charged to the Statement of Financial Activities in the period to which they relate.

Interest receivable

Interest on funds held on deposit is included when receivable and the amount can be measured reliably by the company; this is normally upon notification of the interest paid or payable by the Bank.

Debtors

Trade and other debtors are recognised at the settlement amount after any trade discount offered. Prepayments are valued at the amount prepaid net of any trade discounts due.

Notes to the Financial Statements - continued
for the Year Ended 31 March 2023

1. ACCOUNTING POLICIES - continued

Cash at Bank and in hand

Cash at bank and in hand includes cash and short term highly liquid investments with a short maturity of three months or less from the date of acquisition or opening of the deposit or similar account.

Liabilities and provisions

Liabilities are recognised when there is an obligation at the Balance sheet date as a result of a past event, it is probable that a transfer of economic benefit will be required in settlement, and the amount of the settlement can be estimated reliably. Liabilities are recognised at the amount that the company anticipates it will pay to settle the debt or the amount it has received as advanced payments for the goods or services it must provide. Provisions are measured at the best estimate of the amounts required to settle the obligation. Where the effect of the time value of money is material, the provision is based on the present value of those amounts, discounted at the pre-tax discount rate that reflects the risks specific to the liability. The unwinding of the discount is recognised within interest payable and similar charges.

Financial instruments

The company only has financial assets and financial liabilities of a kind that qualify as basic financial instruments. Basic financial instruments are initially recognised at transaction value and subsequently measured at their settlement value with the exception of bank loans which are subsequently measured at amortised cost using the effective interest method.

2. DONATIONS AND LEGACIES

	31.3.23	31.3.22
	£	£
Donations	19,156	26,859
Gift aid	-	6,582
Legacies	75,536	35,000
Grants	53,745	23,382
Donated services and facilities	83,998	55,926
	<hr/>	<hr/>
	232,435	147,749

People To Places

Notes to the Financial Statements - continued
for the Year Ended 31 March 2023

3. OTHER TRADING ACTIVITIES	31.3.23	31.3.22
	£	£
Fundraising events	95	31
	<u>95</u>	<u>31</u>
4. INVESTMENT INCOME	31.3.23	31.3.22
	£	£
Deposit account interest	4,642	1,768
	<u>4,642</u>	<u>1,768</u>
5. INCOME FROM CHARITABLE ACTIVITIES	31.3.23	31.3.22
	£	£
Subscription income	7,757	5,920
Account fares- public agencies	407,269	400,325
Dial-a-Ride	55,100	28,612
	<u>470,126</u>	<u>434,857</u>
6. RAISING FUNDS		
Raising donations and legacies	31.3.23	31.3.22
	£	£
Fundraising costs	1,768	2,218
	<u>1,768</u>	<u>2,218</u>
7. CHARITABLE ACTIVITIES COSTS		Direct Costs
		£
Direct costs		<u>543,229</u>

Notes to the Financial Statements - continued
for the Year Ended 31 March 2023

8. SUPPORT COSTS

	Other £	Governance costs £	Totals £
Other resources expended	70,019	33,640	103,659

9. NET INCOME/(EXPENDITURE)

Net income/(expenditure) is stated after charging/(crediting):

	31.3.23 £	31.3.22 £
Independent examiner's fee	1,850	1,100
Depreciation - owned assets	42,737	38,798
Other operating leases	59,867	43,806
Surplus on disposal of fixed assets	(970)	-

10. TRUSTEES' REMUNERATION AND BENEFITS

There were no trustees' remuneration or other benefits for the year ended 31 March 2023 nor for the year ended 31 March 2022.

Trustees' expenses

There were no trustees' expenses paid for the year ended 31 March 2023 nor for the year ended 31 March 2022.

11. STAFF COSTS

	31.3.23 £	31.3.22 £
Wages and salaries	365,823	346,695
Social security costs	19,177	15,187
Other pension costs	6,838	6,459
	391,838	368,341

The average monthly number of employees during the year was as follows:

	31.3.23	31.3.22
Drivers, support and office staff	20	23

No employees received emoluments in excess of £60,000.

Included in staff costs is an amount of £26,850 relating to the hours donated by volunteer drivers. This amount is shown in the restricted funds and the same amount is included in donated goods and services. The volunteer drivers' hours are recorded in the same manner as paid drivers. The rate used to calculate the value of those hours is the driver's pay rate, and can, therefore, be measured reliably for accounting purposes.

Notes to the Financial Statements - continued
for the Year Ended 31 March 2023

11. STAFF COSTS - continued

The amount for 2021/22 of £12,120 has been recognised in the comparatives for this year.
The net effect on the reserves brought forward is £nil.

12. COMPARATIVES FOR THE STATEMENT OF FINANCIAL ACTIVITIES

	Unrestricted fund £	Restricted funds £	Endowment fund £	Total funds £
INCOME AND ENDOWMENTS FROM				
Donations and legacies	61,823	85,926	-	147,749
Charitable activities				
Subscription fees	5,920	-	-	5,920
Accounts fares - public agencies	400,325	-	-	400,325
Dial-a-ride	28,612	-	-	28,612
Other trading activities	31	-	-	31
Investment income	1,768	-	-	1,768
Total	498,479	85,926	-	584,405
EXPENDITURE ON				
Raising funds	2,218	-	-	2,218
Charitable activities				
Direct costs	479,791	12,364	-	492,155
Other	41,542	43,806	-	85,348
Total	523,551	56,170	-	579,721
NET INCOME/(EXPENDITURE)	(25,072)	29,756	-	4,684
Transfers between funds	9,481	(9,481)	-	-
Net movement in funds	(15,591)	20,275	-	4,684
RECONCILIATION OF FUNDS				
Total funds brought forward	436,050	-	1,702	437,752
TOTAL FUNDS CARRIED FORWARD	420,459	20,275	1,702	442,436

Notes to the Financial Statements - continued
for the Year Ended 31 March 2023

13. TANGIBLE FIXED ASSETS

	Shopmobility assets £	Fixtures and fittings £	Motor vehicles £	Totals £
COST				
At 1 April 2022	65,940	6,947	378,230	451,117
Additions	14,340	-	88,310	102,650
Disposals	(3,195)	(6,947)	(8,795)	(18,937)
At 31 March 2023	77,085	-	457,745	534,830
DEPRECIATION				
At 1 April 2022	55,575	6,947	229,696	292,218
Charge for year	5,420	-	37,317	42,737
Eliminated on disposal	(2,365)	(6,947)	(8,295)	(17,607)
At 31 March 2023	58,630	-	258,718	317,348
NET BOOK VALUE				
At 31 March 2023	18,455	-	199,027	217,482
At 31 March 2022	10,365	-	148,534	158,899

14. DEBTORS: AMOUNTS FALLING DUE WITHIN ONE YEAR

	31.3.23 £	31.3.22 £
Trade debtors	78,968	76,080
Prepayments and accrued income	22,602	19,323
	101,570	95,403

15. CREDITORS: AMOUNTS FALLING DUE WITHIN ONE YEAR

	31.3.23	31.3.22
	£	£
Trade creditors	10,006	16,580
Social security and other taxes	6,055	6,087
Pension payable	1,275	1,322
VAT	14,957	19,647
Other creditors	7	7
Accruals and deferred income	40,272	44,914
	<u>72,572</u>	<u>88,557</u>

16. PROVISIONS FOR LIABILITIES

	31.3.23	31.3.22
	£	£
Dilapidations provision	<u>35,000</u>	<u>35,000</u>

17. MOVEMENT IN FUNDS

	At 1.4.22 £	Net movement in funds £	Transfers between funds £	At 31.3.23 £
Unrestricted funds				
General fund	420,459	58,280	12,689	491,428
Restricted funds				
Restricted fund	20,275	1,332	(12,689)	8,918
Endowment funds				
Designated	1,702	-	-	1,702
TOTAL FUNDS	<u>442,436</u>	<u>59,612</u>	<u>-</u>	<u>502,048</u>

Net movement in funds, included in the above are as follows:

	Incoming resources £	Resources expended £	Movement in funds £
Unrestricted funds			
General fund	608,346	(550,066)	58,280
Restricted funds			
Restricted fund	99,922	(98,590)	1,332
TOTAL FUNDS	<u>708,268</u>	<u>(648,656)</u>	<u>59,612</u>

Notes to the Financial Statements - continued
for the Year Ended 31 March 2023

17. MOVEMENT IN FUNDS - continued

Comparatives for movement in funds

	At 1.4.21 £	Net movement in funds £	Transfers between funds £	At 31.3.22 £
Unrestricted funds				
General fund	436,050	(25,072)	9,481	420,459
Restricted funds				
Restricted fund	-	29,756	(9,481)	20,275
Endowment funds				
Designated	1,702	-	-	1,702
TOTAL FUNDS	<u>437,752</u>	<u>4,684</u>	<u>-</u>	<u>442,436</u>

Comparative net movement in funds, included in the above are as follows:

	Incoming resources £	Resources expended £	Movement in funds £
Unrestricted funds			
General fund	498,479	(523,551)	(25,072)
Restricted funds			
Restricted fund	85,926	(56,170)	29,756
TOTAL FUNDS	<u>584,405</u>	<u>(579,721)</u>	<u>4,684</u>

Notes to the Financial Statements - continued
for the Year Ended 31 March 2023

17. MOVEMENT IN FUNDS - continued

A current year 12 months and prior year 12 months combined position is as follows:

	At 1.4.21 £	Net movement in funds £	Transfers between funds £	At 31.3.23 £
Unrestricted funds				
General fund	436,050	33,208	22,170	491,428
Restricted funds				
Restricted fund	-	31,088	(22,170)	8,918
Endowment funds				
Designated	1,702	-	-	1,702
TOTAL FUNDS	<u>437,752</u>	<u>64,296</u>	<u>-</u>	<u>502,048</u>

A current year 12 months and prior year 12 months combined net movement in funds, included in the above are as follows:

	Incoming resources £	Resources expended £	Movement in funds £
Unrestricted funds			
General fund	1,106,825	(1,073,617)	33,208
Restricted funds			
Restricted fund	185,848	(154,760)	31,088
TOTAL FUNDS	<u>1,292,673</u>	<u>(1,228,377)</u>	<u>64,296</u>

The Trustees have reviewed the terms of restricted funding received in the period for the purchase of vehicles and have determined that the restriction on the funds ceased at the point that the funds were used to purchase the vehicles; thus the related funds have been transferred from restricted to unrestricted funds during the period.

18. EMPLOYEE BENEFIT OBLIGATIONS

The company operates a defined contributions pension scheme. The assets of the scheme are held separately from those of the company in an independently administered fund. The pension cost charge represents contributions payable by the company to the fund and amounted to £6,838 (2022: £6,459). The expense is allocated to cost of activities and is unrestricted expenditure.

19. RELATED PARTY DISCLOSURES

There were no related party transactions for the year ended 31 March 2023.

