

Company Registration Number 04201736

Smethwick Youth & Community Centre Limited
A Company Limited by Guarantee
Financial Statements
31 March 2024

Charity Number 1090529

Smethwick Youth & Community Centre Limited
A Company Limited by Guarantee

Financial Statements
Year Ended 31 March 2024

CONTENTS	PAGE
Report of the directors/trustees of the charity	1-11
Independent Examiner's Report	12-13
Statement of Financial Activities (incorporating the Income and expenditure account)	14
Balance sheet	15-16
Notes to the financial statements	17-25

Smethwick Youth & Community Centre Limited
A Company Limited by Guarantee

Report of The Directors/Trustees of The Charity
Year Ended 31 March 2024

The directors of the charity, who are also directors for the purposes of company law, have pleasure in presenting their report and the financial statements of the charity for the year ended 31 March 2024.

Reference and Administrative Details

Registered charity name : Smethwick Youth & Community Centre Limited

Charity registration number : 1090529

Company registration number : 04201736

Registered office and Operational address : Trinity Point
1 Trinity Street
Smethwick
West Midlands
B67 7AA

The Directors of the Charity :

The directors of the charity who served the Company during the year were as follows:

Humraaj Singh Shergill (Chairperson)
Mr Bhervinder Singh (Appointed on 14.04.24)
(Director)
Balbir Singh Bhajam (Director)
Mr Sarbjit Singh (Appointed on 14.04.24) (Director)
Mr Jagjevan Singh Samra (Appointed on 14.04.24)
(Director)
Parbinder Kaur (Director)
Gurpal Singh (Director)
Kuldeep Singh Deol (Director)
Harjinder Singh Malhi (Director)
Hardev Singh Mund (Director) (Resigned on
17/04/23)

Secretary : Harjinder Singh Malhi

Other co-opted members : Chuhar Singh Dhariwal

Auditors : DAS, Chartered Accountants
6th Floor AMP House
Dingwall Road
Croydon
CR0 2LX

Bankers : Barclays Bank Plc
Leicester
LE87 2BB

Smethwick Youth & Community Centre Limited

A Company Limited by Guarantee

Report of The Directors of The Charity *(Continued)*

Year Ended 31 March 2024

Structure, Governance and Management

Governing Document

The organization is a charitable company limited by guarantee, incorporated on 19 April 2001 and registered as a charity on 11 February 2002. The company was established under a Memorandum of Association which established the objects and powers of the charitable company and is governed under its Articles of Association. In the event of the company being wound up members are required to contribute an amount not exceeding £1.

Recruitment and Appointment of the Directors of the Charity

Majority of the directors of the company are charity trustees for the purposes of charity law and under the company's Articles are known as directors of the charity. Under the requirements of the Memorandum and Articles of Association, there must be a minimum of nine trustees. The trustees must consist of not less than five representatives from the management committee of the Guru Nanak Gurdwara, High Street, Smethwick and not less than four members of the charity, elected at the annual general meeting, three of whom shall be young people representatives (at least 1 being female and 1 between the age of 18 and 25) and one elderly user. One third of the longest serving trustees are subject to retirement by rotation at the annual general meeting.

Some of the trustees are expected to retire at the next Annual General Meeting by Rotation and offer themselves for re-election.

New trustees will be appointed, if the number of remaining trustees is less than the required minimum under the Articles of Association.

Public Benefit

We have referred to the guidance in the Charity Commission's general guidance on public benefit when reviewing our aims and objectives and in planning our future activities. In particular the trustees consider how planned activities will contribute to the aims and objectives they have set.

Risk Management

The trustees confirm that the major risks to which the charity is exposed have been reviewed and systems have been established to minimise those risks. The trustees have implemented a risk management strategy which comprise:

- an annual review of the risks which charity may face
- establishment of systems and procedures to mitigate those risk identified in the plan and -the implementation of procedures designed to minimise any potential impact on the charity

Smethwick Youth & Community Centre Limited

A Company Limited by Guarantee

Report of The Directors of The Charity (*Continued*)

Year Ended 31 March 2024

Organisational Structure

The centre has nine trustees who meet quarterly to consider the strategic direction and performance of the charity. The trustees work under the stewardship of Humraaj Singh Shergill as Chairperson to ensure the charity maintains its strategic direction and is managed in a professional manner.

The management team present the trustees at the meeting with strategic planning reports, such as financial reviews, project feedback reports, schedule of planned activities for the future and any other issues which require the attention of the trustees.

Related Parties

The charity has been set up under the leadership of Guru Nanak Gurdwara (GNG) High Street, Smethwick with particular emphasis on serving and supporting the whole community of Sandwell and Smethwick. It is a requirement of the Articles of Association that trustees' positions are reserved for the President and the General Secretary and three other members of the management committee of the GNG. There is no doubt that the charity benefits immensely from the inspirational support and voluntary leadership provided by the members of the GNG.

SYCC Mission, Vision and Aims & Objectives

Mission Statement

To develop a multi-agency and cross sector resource centre particularly for the Sikh-Punjabi community in Smethwick

That provides a one-stop solution to

- **REDUCE** social deprivation & exclusion, low levels of skills, social isolation, crime and drug misuse,
- **RAISE** educational standards;
- **IMPROVE** health, employment opportunities, household incomes and,
- **SUPPORT** SME business regeneration and diversification pathways leading to vibrant community regeneration and strengthening of the local neighbourhood

SYCC's Vision

Incorporate a holistic approach to a multiagency facility in the heart of Smethwick Town Centre (High Street) that will enable it to deliver services and provide access to resources across communities and across disciplines

Bridge the skills divide between the local communities and provide a supporting pathway that develops user confidence and promotes access of mainstream provision.

SYCC'S Aims & Objectives

SYCC's mission as explained above is to foster and support the development of individuals, groups and organisations within the Sikh Punjabi community, in particular, tenants living in or around Smethwick Whilst it will provide its services for all local people and has an open door, non-judgemental policy, it will have as its ultimate aim to address the needs of the Sikh Punjabi community

This community is an ethnic group that has often been left behind in terms of employment and educational opportunities, affordable quality housing, access to health and social services, as well as a lack of specific voluntary support structures, strategic- representation and political influence.

Smethwick Youth & Community Centre Limited

A Company Limited by Guarantee

Report of The Directors of The Charity (*Continued*)

Year Ended 31 March 2024

SYCC's aim is to redress this balance through providing one-stop services for the target community to access work, education, health, housing and services locally. Its capacity and scope have been widened through strong support and partnerships locally.

Key Achievements:

SYCC's main achievement in this financial year is the refocusing of our Nursery and Projects to adjust to the overwhelming demands of the Cost of Living Crisis. With some difficult decisions having to be made and costs being cut back in many areas of its operations. SYCC has invested heavily in developing its services to adjust to community need. With a difficult economic climate, the decision was made to diversify the organisation's operations in order to sustain the charity. The Nursery is growing and is being supported by SYCC's team in its development; the number of Centre Projects has increased as well as the centre's client base.

SYCC Nursery:

Driven by community feedback and the changes to the economic and funding climate SYCC has invested in the development of a Nursery. The Nursery has been set up and named **GNG Nursery**. The Nursery operates from the existing SYCC premises, Monday to Friday; 8.00 am to 5.00 pm. The financial investment into the venture will allow SYCC to both continue to provide a community service and bridge the financial gaps brought about by funding cuts in the sector.

The Nursery has also been given a Food Hygiene rating of 5/5.

Children on Roll:

Over 68 (2023: 68) children presently on roll at GNG Nursery

Staff Members:

16 Staff Members (2023: 22)

3 Students

Parental Engagement:

- Nursery is focused on Speech, Language and Communication and took part in programs to help develop children's speech and to narrow the gaps that occurred during Covid. We did this by holding a 'Read Together' program with parents and children.
- Parents to start reading sessions with children once a month to help develop speech and language.
- The nursery organised a library reading event aimed at fostering parental involvement, where we encouraged families to visit our local library to promote literacy and a love for reading in their children.

Community Engagement:

- GNG Nursery conducted several activities that engaged with the community. We were involved in the Harvest collections for food banks and low-income families.
- Additionally, the Nursery had several visits with the children to local amenities. We visited Guru Nanak Gurdwara Smethwick, Smethwick Library and Trinity Church. GNG Nursery has also visited our local train station as well as Birmingham Central Library in City Centre where we enhanced our understanding of community services while encouraging a connection to local culture and education.

Nursery Engagement:

- Our Ofsted inspection took place in April where we were rated "GOOD" in all areas which included: The Quality of Education, Behaviour and Attitudes, Personal Development and Leadership and Management. Additionally, we received positive feedback from the parents. The report stated the fact that "staff praise children and encourage them to keep trying, which builds their self-esteem. This works well and older children show high levels of confidence and resilience."
- Nursery conducted a Speech and Language programme for parents whose English is not their first language. The Nursery also promoted English Classes and were able to provide childcare for parents that registered on the Centre's English Classes.
- GNG Nursery is proud to announce that we received a recognition award for our SENCO practices from the Early Years Inclusive Learning Services, which acknowledges our commitment to supporting children with special educational needs.
- We have initiated the Brilliant Brushers programme which aims to educate children on the significance of oral hygiene and the techniques for brushing and caring for their teeth.

SYCC Projects

SYCC has maintained the usage of the new GNG Community Annexe to provide community services.

As regards to project activities in the past year SYCC has achieved the following:

HHealth

SYCC has engaged with over 200 (2023: 200) people on its Health activities this year.

SYCC provides Yoga classes every Thursday to over 80 (2023: 60) people annually.

SYCC provides Healthy Cooking classes every Thursday to over 70 (2023: 50) people annually.

SYCC runs Healthy Walking Sessions on Friday's for its users. This is attended by 40 (2023: 40) people annually.

SYCC runs Football Sessions for Young People engaging with over 60 (2023: 60) participants annually.

Smethwick Youth & Community Centre Limited
A Company Limited by Guarantee

Report of The Directors of The Charity (*Continued*)
Year Ended 31 March 2024

Employment

SYCC provided assistance to over 2,000 job searches.

SYCC runs a job search and CV updating service, this is coordinated through volunteers.

SYCC managed a 50+ project Employment Support project aiding 40 participants.

Learning

SYCC provide Pre-Entry and Entry Level 1 English classes on Mondays, Tuesdays, Thursdays, and Fridays. This was funded through the SLN Project. This project has seen a total of 84 participants.

SYCC carried out over 30 Gardening sessions where we engaged with over 50 individuals.

SYCC expanded the learning of our staff through Manual Handling which 5 staff members completed and Health and Safety which over 10 staff members completed.

SYCC trained over 20 individuals in First Aid.

SYCC trained over 20 individuals in Food Hygiene.

SYCC trained over 20 individuals in Safeguarding.

SYCC offered Work Experience to over 15 students annually.

Poverty Reduction

SYCC's total number of Welfare and Benefits advice sessions totaled to 2,050 visits (2023: 1,955).

SYCC runs a food donation scheme. The Centre donated 1850kg of food to its clients, which equates to 4050 meals.

SYCC supported 80 (2023: 80) individuals with getting online and completing their Council Tax Reduction Scheme Application.

SYCC supported over 150 (2023:150) individuals with their Universal Credit applications.

Smethwick Youth & Community Centre Limited
A Company Limited by Guarantee

Report of The Directors of The Charity (*Continued*)
Year Ended 31 March 2024

FINANCIAL REVIEW

Transactions and Financial Position

A summary statement of financial activities for the year is shown on page 14 of the accounts. This shows that during the year, total income of £439,516 (2023: £372,670) was received and after expenditure a net profit of £51,810 (2023: Loss £73,822) was credited to reserves. The deficit includes a charge of Nil (2023: 61,233) which represents current 12 months of depreciation on the leasehold property. The trustees have not changed the accounting policy on depreciation as it is felt this is more likely to give a true and fair view.

Reserves policy and funds in deficit

It is the policy of the trustees to maintain six months' running costs. The reserves at 31 March 2024 totaled £373,567 (2023: £321,757), however cash held only amounted to £261,032 (2023: £218,272).

There are a number of funds in deficit, including the building works fund and nursery fund. The trustees are in the process of reviewing and rationalizing the funds.

Principal Funding Resources

The principal funding resources during the year were GNG Welfare Fees, Consortium Income, NEF, ELT, SCVO Grant income, EYSFF, Room Booking, Investment Grant, HPLC Grant, Good thing Foundation, Turner Trust Grant etc.

Investment Policy and Returns

Under the memorandum articles of association, the charity has the power to make any investment, which the trustees see fit.

The investment policy has been to choose the best deposit account available that will give high interest for the organisation and also to choose the most flexible current account for efficiency in daily transactions.

It is the policy of the trustees to maintain six months running costs sufficient to ensure that continued operation of the charitable company's activities. The organisation wishes to maintain sufficient cash flow for known commitments.

SYCC Strategic Direction

Performance – Even in this difficult economic climate, SYCC will continue to maintain its high level of performance and quality of its service delivery.

Productivity – SYCC will become more productive by creating efficiencies internally and through the use of engagement tools such as social media and better use of technology including management information systems.

Processes – Through reviewing all processes SYCC will maintain its level of quality delivery, this will ensure SYCC retain the MATRIX quality standard.

People – The essence of SYCC is our people, those being staff and the clients. We will strive to invest in our people; at a strategic level this includes investment in senior management and training for trustees. At an operational this involves equipping staff with the tools to meet their full potential.

Smethwick Youth & Community Centre Limited
A Company Limited by Guarantee

Report of The Directors of The Charity *(Continued)*
Year Ended 31 March 2024

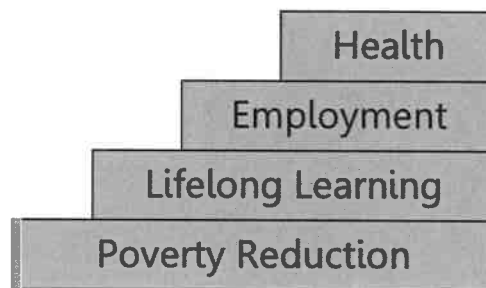
Participation – SYCC will strategically align itself with the governments Localism agenda, focusing on encouraging active participation with local members of the community.

SYCC are Here to HELP:

SYCC continues to work under a new core strategy.

- **Health** (i.e. gym packages, sports)
- **Employment** (i.e. employment packages i.e. creating CV's)
- **Lifelong Learning** (i.e. tuition; literacy, youth services)
- **Poverty Reduction** (i.e. welfare advice)

We will support people on their steps to success:



SYCC are here to "HELP"

SYCC aim to **"HELP"** the local community through their strategy which provides support in the following areas: **"Health"**, **"Employability"**, **"Learning"** and **"Poverty reduction"**.

Health: SYCC provide Health facilities suitable for people of all ages and backgrounds by providing the following activities:

- Yoga for women
- Exercise machines on a drop-in basis
- Weightlifting
- Football sessions
- Karate sessions
- Community Walks
- Healthy cooking

The provide health services aimed at the local community to reduce health risks. Furthermore, SYCC wish to tackle common dangers including depression and stress. With many in the area working long hours therefore struggling to find time to exercise, SYCC will **"HELP"** through providing a combination of everyday healthy living. This includes physical exercise through cardio workouts and valuable knowledge through healthy cooking.

Smethwick Youth & Community Centre Limited
A Company Limited by Guarantee

-
Report of The Directors of The Charity (*Continued*)
Year Ended 31 March 2024

Employability:

- CV's
- Job search
- Basic Computing through UKOnline Centres

Employability opportunities received through SYCC enables clients to enhance their employability chances. We create unemployed clients a CV which will allow them to apply to jobs; providing a steady income and reducing poverty. Moreover, the centre provides support on searching and applying for jobs online.

Learning:

- English classes
- Basic Computing
- Youth Club
- Nursery

Gaining a higher level of education will allow the individual to become more employable as they have extended their skills and knowledge. More career opportunities will be available. Furthermore, adults can help their children with homework which they perhaps cannot provide support for at the moment. The Youth Club provides afterschool activities which encourages the young individuals to interact with one-another and socialise. Many of these young people may not be able to socialise with each other at school in this way. The basic computing provides both learning and enhancing employability; as many jobs require I.T. skills. Finally, with SYCC's new nursery opening, we wish to provide young children with the right steps in their learning pathway. We hope to provide them with opportunities that they may not receive elsewhere. With the high waiting lists in the area to get a child into a nursery, we feel that this opportunity will reduce the wait and raise the chances of a child starting within the applicable year.

Poverty Reduction:

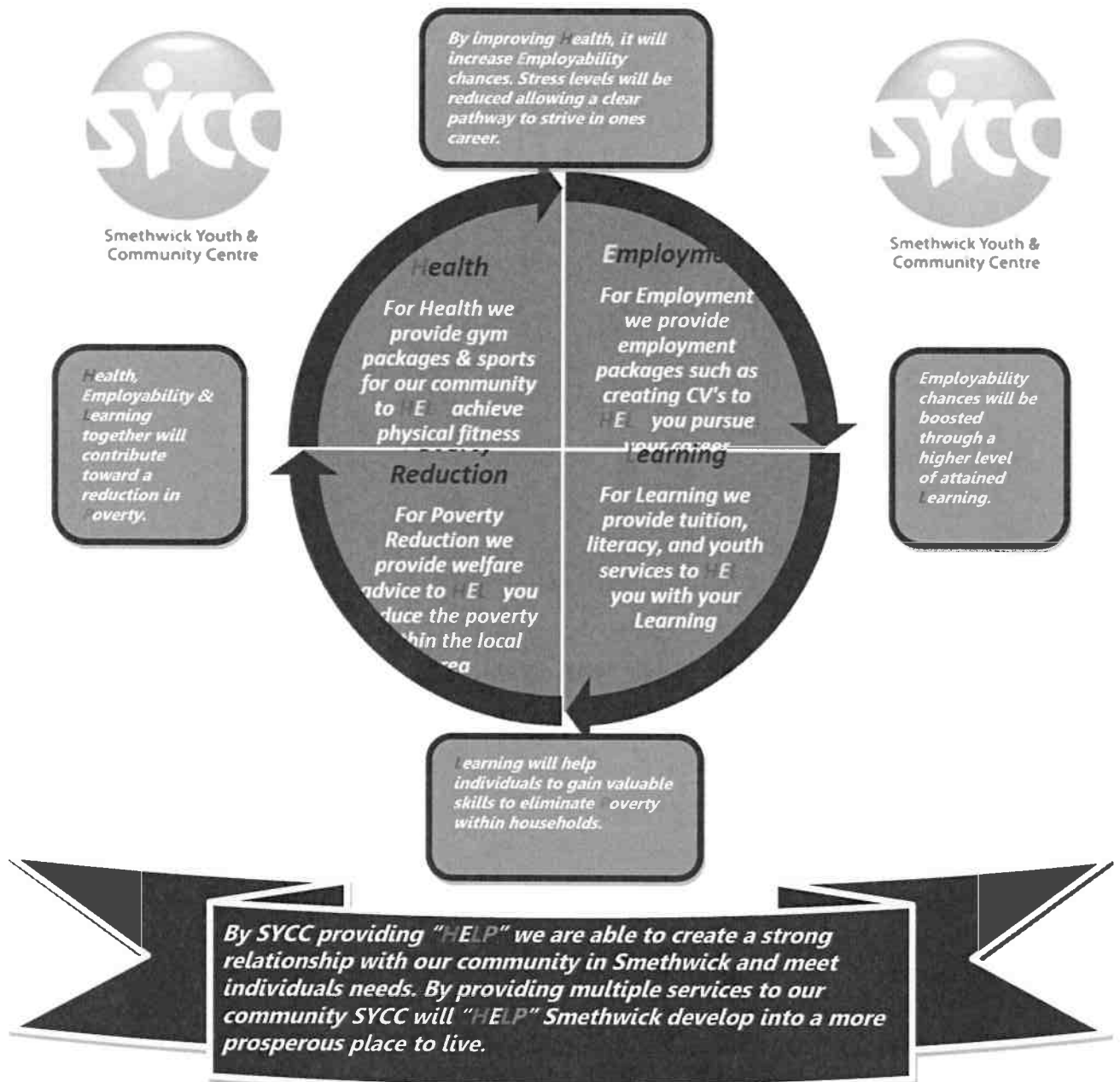
Over 30% of Sandwell's 309,000 populations live in relative poverty. This includes 32% of children under 18 and increasing numbers of children and adults with health and disability needs. Our welfare advisor provides assistance with welfare problems which people living in the local community face within their life.

Together with the combination of Health, Employability & Learning – SYCC will contribute towards Poverty Reduction within the local area.

Smethwick Youth & Community Centre Limited
A Company Limited by Guarantee

Report of The Directors of The Charity (Continued)
Year Ended 31 March 2024

Linkages within the "HELP" strategy



With improved Health, one can strive to become employed and reach their personal and career goals. It will help them to manage their time and reduce stress and depression. Physical exercise will clear their mind and stop them from sinking into an unhealthy lifestyle. The new skills and knowledge obtained from learning will contribute toward employability; as one will be able to use what they have learnt in practise. Employability opportunities provided by SYCC will aim for the individual to work toward a higher income, supporting themselves and their family. With the combination of health, employability, learning, and the welfare advice given from SYCC, it will work towards poverty reduction.

Smethwick Youth & Community Centre Limited
A Company Limited by Guarantee

Report of The Directors of The Charity (Continued)
Year Ended 31 March 2024

Responsibilities of The Directors of The Charity

The directors of the charity are responsible for preparing the Report of the directors of the charity and the financial statements in accordance with applicable law and United Kingdom Generally Accepted Accounting Practice.

Company law requires the directors of the charity to prepare financial statements for each financial year which give a true and fair view of the state of affairs of the charity and of the surplus or deficit of the charity for that period.

In preparing these financial statements, the directors of the charity are required to:

- select suitable accounting policies and then apply them consistently,
- make judgements and estimates that are reasonable and prudent; and
- prepare the financial statements on the going concern basis unless it is inappropriate to presume that the charity will continue in operation.

The directors of the charity are responsible for keeping proper accounting records which disclose with reasonable accuracy at any time the financial position of the charity and which enable them to ensure that the financial statements comply with Companies Act 2006. The directors of the charity are also responsible for safeguarding the assets of the charity and hence for taking reasonable steps for the prevention and detection of fraud and other irregularities

In so far as the directors of the charity are aware

- there is no relevant audit information of which the charity's auditors are unaware, and
- the directors of the charity have taken all steps that they ought to have taken to make themselves aware of any relevant audit information and to establish that the auditors are aware of that information.

This report has been prepared having taken advantage of the small companies' exemption in the Companies Act 2006.

Signed on behalf of the directors of the charity-

x 
Balbir Singh Bhajam (Treasurer)

Date: 18/12/2024

Smethwick Youth & Community Centre Limited
A Company Limited by Guarantee

Independent Examiner's Report to the members of Smethwick Youth & Community Centre Limited.

Year Ended 31 March 2024

I report on the accounts of the charity for the year ended 31 March 2024 which are set out on pages 13 to 24.

Respective responsibilities of trustees and examiner

The charity's trustees are responsible for the preparation of the accounts. The charity's trustees consider that an audit is not required for this year under section 144(2) of the Charities Act 2011 (the 2011 Act) and that an independent examination is needed. It is my responsibility to:

- examine the accounts under section 145 of the 2011 Act;
- follow the procedures laid down in the general Directions given by the Charity Commission under section 145(5)(b) of the 2011 Act; and
- state whether particular matters have come to my attention.

Basis of independent examiner's report

My examination was carried out in accordance with the general Directions given by the Charity Commission. An examination includes a review of the accounting records kept by the charity and a comparison of the accounts presented with those records. It also includes consideration of any unusual items or disclosures in the accounts, and seeking explanations from you as trustees concerning any such matters. The procedures undertaken do not provide all the evidence that would be required in an audit and consequently no opinion is given as to whether the accounts present a "true and fair view" and the report is limited to those matters set out in the statement below.

Independent examiner's statement

In connection with my examination, no matter has come to my attention:

- 1 which gives me reasonable cause to believe that, in any material respect, the requirements:
 - to keep accounting records in accordance with section 130 of the 2011 Act; and
 - to prepare accounts which accord with the accounting records and comply with the accounting requirements of the 2011 Act and with the methods and principles of the statement of recommended practice; accounting and reporting by charities have not been met; or

Smethwick Youth & Community Centre Limited
A Company Limited by Guarantee

**Independent Examiner's Report to the members of Smethwick Youth &
Community Centre Limited.**

Year Ended 31 March 2024

- 2 to which, in my opinion, attention should be drawn in order to enable a proper understanding of the accounts to be reached.

x *DAS, Chartered Accountants*
.....

DAS, Chartered Accountants
6th Floor AMP House
Dingwall Road
Croydon
CR0 2LX

Date: *20/12/24*
.....

Smethwick Youth & Community Centre Limited
A Company Limited By Guarantee

**Statement Of Financial Activities (Incorporating
The Income and Expenditure Account)**

Year Ended 31 March 2024

		Unrestricted Fund 31st March 2024 £	Restricted Fund 31st March 2024 £	Total Fund 31st March 2024 £	Total Fund 31st March 2023 £
	Note				
INCOMING RESOURCES					
Incoming resources from generated funds :					
Voluntary income		142,670	175,965	318,635	234,051
Activities for generating funds	2	120,882	-	120,882	138,619
TOTAL INCOMING RESOURCES		263,552	175,965	439,516	372,670
RESOURCES EXPENDED					
Charitable Activities and Governance Cost	4	(209,422)	(178,284)	(387,706)	(446,492)
TOTAL RESOURCES EXPENDED		(209,422)	(178,284)	(387,706)	(446,492)
NET RESOURCES EXPENDED		54,129	(2,319)	51,810	(73,822)
TOTAL FUNDS BROUGHT FORWARD AT 1ST APRIL 2023		(168,521)	490,278	321,757	395,579
Prior Year Adjustments	7	-	-	-	-
TOTAL FUNDS AT 31ST MARCH 2024		(114,392)	487,959	373,567	321,757
RECONCILIATION OF FUNDS					
		Unrestricted Fund 31st March 2024 £	Restricted Fund 31st March 2024 £	Total Fund 31st March 2024 £	Total Fund 31st March 2023 £
Total Funds Brought Forward		(168,521)	490,278	321,757	395,579
Less : Prior Year Adjustments		-	-	-	-
Total net activity for the year		54,129	(2,319)	51,810	(73,822)
Total Funds Carried forward		(114,392)	487,959	373,567	321,757

The Statement of Financial Activities includes all gains and losses in the year and therefore a statement of total recognised gains and losses has not been prepared. All of the above amounts relate to continuing activities.

Smethwick Youth & Community Centre Limited
A Company Limited By Guarantee

Balance Sheet

Year Ended 31 March 2024

	Note	2024 £	2023 £
FIXED ASSETS			
Tangible Assets	7	26,027	34,810
CURRENT ASSETS			
Debtors & Prepayments	8	90,693	70,111
Cash at Bank & In Hand		261,032	218,272
		<u>351,725</u>	<u>288,383</u>
CREDITORS: Amounts due within one year	9	<u>(4,185)</u>	<u>(1,436)</u>
NET CURRENT ASSETS		347,540	286,947
CREDITORS: Amounts falling due after more than one year		-	-
NET ASSETS		<u><u>373,567</u></u>	<u><u>321,757</u></u>
 FUNDED BY			
Accumulated Unrestricted Income funds	11	(114,392)	(168,521)
Accumulated Restricted Income funds	10	487,959	490,278
TOTAL		<u><u>373,567</u></u>	<u><u>321,757</u></u>

For the year ending 31 March 2024 the company was entitled to exemption from audit under section 477 of the companies Act 2006

The Trustees/Directors have not required the company to obtain an audit in accordance with section 476 of the companies Act 2006

The Trustees/Directors acknowledge their responsibility -

- for complying with the requirements to keep accounting records of Sections 386 and 387 of the Companies Act 2006
- with respect to accounting records and preparation of account, as to the surplus or deficit to give a true and fair view of the charitable financial status


Smethwick Youth & Community Centre Limited
A Company Limited By Guarantee

Balance Sheet

- of the state of affairs of the charitable company at the end of each financial year in accordance with the requirements of Sections 394 and 395 which otherwise comply with the requirements of the Companies Act 2006 relating to financial statements, so far as applicable to the charitable company

The accounts have been prepared in accordance with the provisions applicable to companies subject to the small companies regime and the Financial Reporting Standard for Smaller Entities, 2008.

These financial statements were approved and authorised for issue by the members of the committee on the 18/12/24 and are signed on their behalf by :

x 
.....
Balbir Singh Bhajam
(Treasurer)

Smethwick Youth & Community Centre Limited
A Company Limited By Guarantee

Notes To The Financial Statements

Year Ended 31 March 2024

1. ACCOUNTING POLICIES

Basis of Accounting

The financial statements have been prepared in accordance with the Financial Reporting Standard for Smaller Entities, effective April 2008, the Statement of Recommended Practice "Accounting and Reporting by Charities" issued in January 2019 (SORP JAN 2019) and the Companies Act 2006.

Cash flow statement

The directors of the charity have taken advantage of the exemption in Financial Reporting Standard No 1 (revised) from including a cash flow statement in the financial statements on the grounds that the Company is small.

Fixed assets

All fixed assets are initially recorded at cost

Depreciation

Depreciation is calculated so as to write off the cost of an asset, less its estimated residual value, over the useful economic life of that asset as follows

Office Equipment	- 20% on Reducing balance method.
Fixtures & Fittings	- 20% on Reducing balance method.
Leasehold Property	- 5% on cost
Improvements to property	- 5% on cost

Income recognition

Income is recognized when the charity is entitled to it, there is reasonable certainty that it will be received and it is measurable.

Expenditure and liabilities

Expenditure and the related liabilities are recognised at the point that there is an obligation on the charity to transfer economic benefits. Expenditure include any VAT which cannot be fully recorded, and is reported as part of the expenditure to which of relates to charitable and governance cost.

Apportionment of costs

Costs are applied on a fair basis to the various projects, keeping in mind that certain projects are based on delivery of outputs, therefore costs are allocated to the fund to reflect the fact that the outputs have been delivered.

Funds

Restricted funds are recognised when a donor specifies that the funds are to be spent for a particular purpose. All other funds are classified as unrestricted.

Smethwick Youth & Community Centre Limited
A Company Limited By Guarantee

Notes To The Financial Statements

2 VOLUNTARY INCOME	Unrestricted Fund 31st March 2024 £	Restricted Fund 31st March 2024 £	Total Fund 31st March 2024 £	Total Fund 31st March 2023 £
Donations				
Miscellaneous	-	-	-	-
GNG Nursery Fees	120,882	-	120,882	138,619
Grants receivable				
BMET	-	-	-	-
Youth Interfaith Club	-	-	-	-
DWP	-	-	-	-
HPCL_Employments	-	-	-	-
Welfare	-	-	-	-
Worker Education	-	-	-	-
Consortium	142,670	-	142,670	88,279
RSA Insurance	-	-	-	-
Steps	-	-	-	-
NEF	-	-	-	-
ELT	-	31,580	31,580	31,192
Child care invest me	-	-	-	390
Booking	-	-	-	-
EYPP	-	-	-	-
STP	-	-	-	-
Core Cost	-	-	-	-
UK Online	-	-	-	-
Good Things Foundation	-	3,600	3,600	6,900
SCVO income	-	9,650	9,650	-
HMRC JRS Grant	-	-	0	-
Covid Grant	-	-	0	-
SYCC HAF 2023 Easter Grant	-	-	0	2,172
EYSFF	-	55,823	55,823	92,865
Miscellaneous income	-	75,311	75,311	12,253
	263,552	175,965	439,516	372,670

3 INCOME OF CHARITABLE ACTIVITIES BY FUND TYPE

	Unrestricted Fund 31st March 2024 £	Restricted Fund 31st March 2024 £	Total Fund 31st March 2024 £	Total Fund 31st March 2023 £
Donations/Collections	-	-	-	-
GNG Nursery Fees	120,882	-	120,882	138,619
Employment	-	-	-	-
Adult Education	-	-	-	-
Child Education	-	31,580	31,580	31,192
Child care invest me	-	-	-	390
Youth	-	-	-	-
Health	-	-	-	-
Consortium	142,670	-	142,670	88,279
Booking	-	-	-	-
Prior period adjustment - NEF/ELT	-	-	-	-

Smethwick Youth & Community Centre Limited
A Company Limited By Guarantee

Notes To The Financial Statements

HMRC JRS Grant	-	-	-
Good Things Foundation	3,600	3,600	6,900
SCVO income	9,650	9,650	-
SYCC HAF 2023 Easter Grant	-	-	2,172
EYSFF	55,823	55,823	92,865
Miscellaneous income	-	75,311	75,311
	263,552	175,965	439,516
			372,670

Smethwick Youth & Community Centre Limited
A Company Limited By Guarantee
Notes To The Financial Statements

4 GOVERNANCE & CHARITABLE COST

	Unrestricted Funds 2024 £	Restricted Funds 2024 £	Total 31st March 2024 £	Total 31st March 2023 £
Wages & Salaries	179,169	76,787	255,956	265,424
Staff pension costs	2,845	1,219	4,064	4,079
Staff training	742	366	1,108	454
Rent & Rates	32	1,835	1,867	3,352
Insurances	-	3,471	3,471	3,647
Light & Heat	-	15,815	15,815	7,574
Cleaning & Toiletries	2,842	1,164	4,006	5,071
Repairs & Renewals	408	343	751	1,984
Printing, Postage & Stationery	-	1,849	1,849	10,709
Advertising & Promotion	815	349	1,164	-
Telephone	-	8,248	8,248	7,675
Computer costs	1,205	516	1,721	-
Community Engagement Activities	-	159	159	159
Bad debts	-	-	-	185
Tuition Fees	-	-	-	-
Professional Charges	1,237	42,461	43,698	42,348
Accountancy Fees	-	3,036	3,036	3,036
Audit fees	-	2,304	2,304	2,304
Bank interest & Charges	-	96	96	103
Sundries	6,962	3,703	10,665	9,957
Donations	-	-	-	-
Subscription	928	804	1,732	1,338
Prior year income reversed	-	13,115	13,115	-
GNG Nursery expenses	3,454	644	4,098	6,677
Depreciation	8,783	-	8,783	70,416
	209,422	178,284	387,706	446,492

5 NET RESOURCES EXPENDED FOR THE YEAR

This is stated after charging:	2024 £	2023 £
Depreciation	8,783	70,416
Auditor's remuneration: - audit of the financial statements	2,304	2,304
	11,087	72,720

Smethwick Youth & Community Centre Limited
A Company Limited By Guarantee
Notes To The Financial Statements

6 STAFF COSTS AND EMOLUMENTS

Total staff costs were as follows:

	2024	2023
	£	£
Wages and salaries	245,559	254,543
Social security costs	10,397	10,881
	<u>255,956</u>	<u>265,424</u>

Particulars of employees:

The average number of employees during the year, calculated on the basis of full-time equivalents, was as follows:

	2024	2023
	No	No
Project manager	1	1
Finance officer	1	1
Fundraising	1	1
Charitable activities	14	18
Administration and support	2	1
	<u>19</u>	<u>22</u>

No employee received emoluments of more than £60,000 during the year Nil (2023 - Nil).

The trustees received no remuneration or expenses, either directly or indirectly from the charity.

Smethwick Youth & Community Centre Limited
A Company Limited By Guarantee
Notes To The Financial Statements
Year Ended 31 March 2024

7 TANGIBLE FIXED ASSETS

COST	Improvements to property £	Equipment £	Fixtures & Fittings £	Leasehold Property £	Total £
1st April 2023	122,616	53,218	162,551	1,224,713	1,563,098
Additions	-	-	-	-	-
As at 31st March 2024	122,616	53,218	162,551	1,224,713	1,563,098
DEPRECIATION					
1st April 2023	101,070	50,124	152,382	1,224,712	1,528,288
Charge for the year	6,130	619	2,034	-	8,783
As at 31st March 2024	107,200	50,743	154,416	1,224,712	1,537,071
Net Book Value					
1st April 2023	21,546	3,094	10,169	1	34,810
1st April 2024	15,416	2,475	8,135	1	26,027

The leasehold property comprises land and buildings. The land was leased from Guru Nanak Gurdwara (GNG) Smethwick, for a term of ten years until 5th April 2013. No depreciation was charged until 31 March 2013, on the grounds that the lease would be renewed for the foreseeable future. The trustees now feel that it is more prudent to depreciate the property, and this has been charged on the basis that the original lease was intended to run for twenty years. Thus the property is now shown Fully depreciated.

The trustees had and will continue to allow Smethwick Youth & Community Centre to use the premises for charitable purpose for foreseeable future until being informed otherwise.

Smethwick Youth & Community Centre Limited
A Company Limited By Guarantee

Notes To The Financial Statements

Year Ended 31 March 2024

8 DEBTORS

	2024	2023
	£	£
Trade debtors	2,915	13,115
Sandwell Metropolitan Borough Council	-	-
Furlough Grant	-	-
Prepayments	2,778	1,996
Other debtors (Lyreco)	-	-
Other debtors (Midshire Communications Limited)	-	-
Gururanak Gurudwara Loan	70,000	40,000
Utility Prepayment	15,000	15,000
	90,693	70,111

9 CREDITORS: Amounts falling due within one year

	2024	2023
	£	£
Trade creditors	-	-
Taxation and social security	3,234	570
Other creditors	-	-
Accrued expense	-	-
Pension contributions	951	866
	4,185	1,436

Smethwick Youth & Community Centre Limited
A Company Limited By Guarantee

Notes To The Financial Statements

Year Ended 31 March 2024

10 ACCUMULATED RESTRICTED INCOME FUNDS

	Notes	Bal b/fd 1st April 2023	Income Resources	Outgoing Resources	Balance at 31st March 2024
Restricted Funds:					
SYCC Building works		(1,137,874)		178,284	(1,316,157)
Core		4,500			4,500
UK Online		215,403	-		215,403
Child care invest me		37,802	-		37,802
Youth Interfaith Club		6,900			6,900
Steps		62,965	-		62,965
PAYP		9,576			9,576
Baron		800			800
Edwards		1,000			1,000
DWP		13,520			13,520
HPCL_Employments		12,000			12,000
GNG Welfare		24,000			24,000
Worker Education		1,490			1,490
Midshire		3,581			3,581
NEF		633,048	-		633,048
ELT		328,691	31,580		360,272
Sports		7,715			7,715
Good Things Foundation		27,075	3,600		30,675
EYSFF		255,209	55,823		311,032
Miscellaneous income		-	75,311		75,311
SCVO income		(17,124)	9,650		(7,474)
Total Restricted Funds		490,278	175,965	178,284	487,959

11 ACCUMULATED UNRESTRICTED INCOME FUNDS

		Bal b/fd 1st April 2023	Income Resources	Outgoing Resources	Balance at 31st March 2024
SRB4		798			798
SRB6		(17,289)			(17,289)
SRB6 e		10,750			10,750
IAG		44,514			44,514
AXA		(1,580)			(1,580)
HMRC online filing income		250			250
Childrens Fund		153			153
Dudley College		91,911			91,911
South Birmingham College		7,250			7,250
Other Unrestricted Income		20,204	-		20,204
SYCC Income		2,699			2,699

Smethwick Youth & Community Centre Limited
A Company Limited By Guarantee

Notes To The Financial Statements

Year Ended 31 March 2024

Private Tutition	3,124			3,124
IDS-Donation	6,688			6,688
GNG Income - Nursery	(1,430,597)	120,882	209,422	(1,519,138)
Birmingham Chamber of Commerce	1,425			1,425
C & C	13,599			13,599
Computer	405			405
Room Hire	2,442			2,442
IFA	4,975			4,975
Donation	4,915			4,915
Citizen	3,139			3,139
DAF2 Training	10,873			10,873
Digital	2,000			2,000
BuddyUp	18,000			18,000
NLDC2	3,764			3,764
NLDC3	5,647			5,647
Sandwell College	17,302			17,302
WNF3	189,560			189,560
WNF_R&D	13,500			13,500
WNF4_ESOL_Phase1	4,014			4,014
WNF4_ESOL_Phase2	12,124			12,124
PAYP	7,542			7,542
Calibre	1,076			1,076
SFVVO	1,500			1,500
WNF_EMP	8,746			8,746
Big Lottery - Advice Services Fund	57,500			57,500
BMET	3,440			3,440
Consortium	519,066	142,670		661,736
SCOLL	2,400			2,400
STP	4,667			4,667
Booking	650	-		650
HMRC JRS Grant	76,395	-		76,395
Covid Grant	62,249	0		62,249
The Winston Churchill Fellowship	22,253	0		22,253
Vision Grant-SCVO	17,435	0		17,435
Total Unrestricted Funds	(168,521)	263,552	209,422	(114,392)
Total Funds	321,757	439,516	387,706	373,567

12 COMPANY LIMITED BY GUARANTEE -

Smethwick Youth & Community Centre is a company limited by guarantee and accordingly does not have a share capital.

Every member of the company undertakes to contribute such amount as may be required not exceeding £1 to the assets of the charitable company in the event of its being wound up while he or she is a member, or within one year after he or she ceases to be a member.

13 RELATED PARTIES

As disclosed in the Trustees' Report, Guru Nanak Gurdwara (GNG) Smethwick, a registered charity, is the main related party, as a set number of trustees of the charity are required to be selected from the GNG committee. The charity leases land from GNG, as disclosed in the note on fixed assets. The terms of the lease include a peppercorn rent. No rent was paid during the period. An amount of £15,000 (2023: 5,000) was contributed by SYCC to the share of Utilities. SYCC also made a prepayment of £15,000 (2023: 15,000) for future Utility Costs. SYCC has also loaned GNG an amount of 70,000 (2023: 40,000).

Company Registration Number 04201736

Smethwick Youth & Community Centre Limited
A Company Limited by Guarantee
Financial Statements
31 March 2024

Charity Number 1090529

Smethwick Youth & Community Centre Limited
A Company Limited by Guarantee

Financial Statements
Year Ended 31 March 2024

CONTENTS	PAGE
Report of the directors/trustees of the charity	1-11
Independent Examiner's Report	12-13
Statement of Financial Activities (incorporating the Income and expenditure account)	14
Balance sheet	15-16
Notes to the financial statements	17-25

Smethwick Youth & Community Centre Limited
A Company Limited by Guarantee

Report of The Directors/Trustees of The Charity
Year Ended 31 March 2024

The directors of the charity, who are also directors for the purposes of company law, have pleasure in presenting their report and the financial statements of the charity for the year ended 31 March 2024.

Reference and Administrative Details

Registered charity name : Smethwick Youth & Community Centre Limited
Charity registration number : 1090529
Company registration number : 04201736
Registered office and Operational address : Trinity Point
1 Trinity Street
Smethwick
West Midlands
B67 7AA

The Directors of the Charity :

The directors of the charity who served the Company during the year were as follows:

Humraaj Singh Shergill (Chairperson)
Mr Bhervinder Singh (Appointed on 14.04.24)
(Director)
Balbir Singh Bhajam (Director)
Mr Sarbjit Singh (Appointed on 14.04.24) (Director)
Mr Jagjevan Singh Samra (Appointed on 14.04.24)
(Director)
Parbinder Kaur (Director)
Gurpal Singh (Director)
Kuldeep Singh Deol (Director)
Harjinder Singh Malhi (Director)
Hardev Singh Mund (Director) (Resigned on
17/04/23)

Secretary : Harjinder Singh Malhi

Other co-opted members : Chuhar Singh Dhariwal

Auditors : DAS, Chartered Accountants
6th Floor AMP House
Dingwall Road
Croydon
CR0 2LX

Bankers : Barclays Bank Plc
Leicester
LE87 2BB

Smethwick Youth & Community Centre Limited
A Company Limited by Guarantee

Report of The Directors of The Charity *(Continued)*
Year Ended 31 March 2024

Structure, Governance and Management

Governing Document

The organization is a charitable company limited by guarantee, incorporated on 19 April 2001 and registered as a charity on 11 February 2002. The company was established under a Memorandum of Association which established the objects and powers of the charitable company and is governed under its Articles of Association. In the event of the company being wound up members are required to contribute an amount not exceeding £1.

Recruitment and Appointment of the Directors of the Charity

Majority of the directors of the company are charity trustees for the purposes of charity law and under the company's Articles are known as directors of the charity. Under the requirements of the Memorandum and Articles of Association, there must be a minimum of nine trustees. The trustees must consist of not less than five representatives from the management committee of the Guru Nanak Gurdwara, High Street, Smethwick and not less than four members of the charity, elected at the annual general meeting, three of whom shall be young people representatives (at least 1 being female and 1 between the age of 18 and 25) and one elderly user. One third of the longest serving trustees are subject to retirement by rotation at the annual general meeting.

Some of the trustees are expected to retire at the next Annual General Meeting by Rotation and offer themselves for re-election.

New trustees will be appointed, if the number of remaining trustees is less than the required minimum under the Articles of Association.

Public Benefit

We have referred to the guidance in the Charity Commission's general guidance on public benefit when reviewing our aims and objectives and in planning our future activities. In particular the trustees consider how planned activities will contribute to the aims and objectives they have set.

Risk Management

The trustees confirm that the major risks to which the charity is exposed have been reviewed and systems have been established to minimise those risks. The trustees have implemented a risk management strategy which comprise:

- an annual review of the risks which charity may face
- establishment of systems and procedures to mitigate those risk identified in the plan and -the implementation of procedures designed to minimise any potential impact on the charity

Smethwick Youth & Community Centre Limited **A Company Limited by Guarantee**

Report of The Directors of The Charity (*Continued*) **Year Ended 31 March 2024**

Organisational Structure

The centre has nine trustees who meet quarterly to consider the strategic direction and performance of the charity. The trustees work under the stewardship of Humraaj Singh Shergill as Chairperson to ensure the charity maintains its strategic direction and is managed in a professional manner.

The management team present the trustees at the meeting with strategic planning reports, such as financial reviews, project feedback reports, schedule of planned activities for the future and any other issues which require the attention of the trustees.

Related Parties

The charity has been set up under the leadership of Guru Nanak Gurdwara (GNG) High Street, Smethwick with particular emphasis on serving and supporting the whole community of Sandwell and Smethwick. It is a requirement of the Articles of Association that trustees' positions are reserved for the President and the General Secretary and three other members of the management committee of the GNG. There is no doubt that the charity benefits immensely from the inspirational support and voluntary leadership provided by the members of the GNG.

SYCC Mission, Vision and Aims & Objectives

Mission Statement

To develop a multi-agency and cross sector resource centre particularly for the Sikh-Punjabi community in Smethwick

That provides a one-stop solution to

- **REDUCE** social deprivation & exclusion, low levels of skills, social isolation, crime and drug misuse,
- **RAISE** educational standards;
- **IMPROVE** health, employment opportunities, household incomes and,
- **SUPPORT** SME business regeneration and diversification pathways leading to vibrant community regeneration and strengthening of the local neighbourhood

SYCC's Vision

Incorporate a holistic approach to a multiagency facility in the heart of Smethwick Town Centre (High Street) that will enable it to deliver services and provide access to resources across communities and across disciplines

Bridge the skills divide between the local communities and provide a supporting pathway that develops user confidence and promotes access of mainstream provision.

SYCC'S Aims & Objectives

SYCC's mission as explained above is to foster and support the development of individuals, groups and organisations within the Sikh Punjabi community, in particular, tenants living in or around Smethwick Whilst it will provide its services for all local people and has an open door, non-judgemental policy, it will have as its ultimate aim to address the needs of the Sikh Punjabi community

This community is an ethnic group that has often been left behind in terms of employment and educational opportunities, affordable quality housing, access to health and social services, as well as a lack of specific voluntary support structures, strategic- representation and political influence.

Smethwick Youth & Community Centre Limited

A Company Limited by Guarantee

Report of The Directors of The Charity (*Continued*)

Year Ended 31 March 2024

SYCC's aim is to redress this balance through providing one-stop services for the target community to access work, education, health, housing and services locally. Its capacity and scope have been widened through strong support and partnerships locally.

Key Achievements:

SYCC's main achievement in this financial year is the refocusing of our Nursery and Projects to adjust to the overwhelming demands of the Cost of Living Crisis. With some difficult decisions having to be made and costs being cut back in many areas of its operations. SYCC has invested heavily in developing its services to adjust to community need. With a difficult economic climate, the decision was made to diversify the organisation's operations in order to sustain the charity. The Nursery is growing and is being supported by SYCC's team in its development; the number of Centre Projects has increased as well as the centre's client base.

SYCC Nursery:

Driven by community feedback and the changes to the economic and funding climate SYCC has invested in the development of a Nursery. The Nursery has been set up and named **GNG Nursery**. The Nursery operates from the existing SYCC premises, Monday to Friday; 8.00 am to 5.00 pm. The financial investment into the venture will allow SYCC to both continue to provide a community service and bridge the financial gaps brought about by funding cuts in the sector.

The Nursery has also been given a Food Hygiene rating of 5/5.

Children on Roll:

Over 68 (2023: 68) children presently on roll at GNG Nursery

Staff Members:

16 Staff Members (2023: 22)

3 Students

Parental Engagement:

- Nursery is focused on Speech, Language and Communication and took part in programs to help develop children's speech and to narrow the gaps that occurred during Covid. We did this by holding a 'Read Together' program with parents and children.
- Parents to start reading sessions with children once a month to help develop speech and language.
- The nursery organised a library reading event aimed at fostering parental involvement, where we encouraged families to visit our local library to promote literacy and a love for reading in their children.

Community Engagement:

- GNG Nursery conducted several activities that engaged with the community. We were involved in the Harvest collections for food banks and low-income families.
- Additionally, the Nursery had several visits with the children to local amenities. We visited Guru Nanak Gurdwara Smethwick, Smethwick Library and Trinity Church. GNG Nursery has also visited our local train station as well as Birmingham Central Library in City Centre where we enhanced our understanding of community services while encouraging a connection to local culture and education.

Nursery Engagement:

- Our Ofsted inspection took place in April where we were rated "GOOD" in all areas which included: The Quality of Education, Behaviour and Attitudes, Personal Development and Leadership and Management. Additionally, we received positive feedback from the parents. The report stated the fact that "staff praise children and encourage them to keep trying, which builds their self-esteem. This works well and older children show high levels of confidence and resilience."
- Nursery conducted a Speech and Language programme for parents whose English is not their first language. The Nursery also promoted English Classes and were able to provide childcare for parents that registered on the Centre's English Classes.
- GNG Nursery is proud to announce that we received a recognition award for our SENCO practices from the Early Years Inclusive Learning Services, which acknowledges our commitment to supporting children with special educational needs.
- We have initiated the Brilliant Brushers programme which aims to educate children on the significance of oral hygiene and the techniques for brushing and caring for their teeth.

SYCC Projects

SYCC has maintained the usage of the new GNG Community Annexe to provide community services.

As regards to project activities in the past year SYCC has achieved the following:

HHealth

SYCC has engaged with over 200 (2023: 200) people on its Health activities this year.

SYCC provides Yoga classes every Thursday to over 80 (2023: 60) people annually.

SYCC provides Healthy Cooking classes every Thursday to over 70 (2023: 50) people annually.

SYCC runs Healthy Walking Sessions on Friday's for its users. This is attended by 40 (2023: 40) people annually.

SYCC runs Football Sessions for Young People engaging with over 60 (2023: 60) participants annually.

Smethwick Youth & Community Centre Limited
A Company Limited by Guarantee

Report of The Directors of The Charity (*Continued*)
Year Ended 31 March 2024

Employment

SYCC provided assistance to over 2,000 job searches.

SYCC runs a job search and CV updating service, this is coordinated through volunteers.

SYCC managed a 50+ project Employment Support project aiding 40 participants.

Learning

SYCC provide Pre-Entry and Entry Level 1 English classes on Mondays, Tuesdays, Thursdays, and Fridays. This was funded through the SLN Project. This project has seen a total of 84 participants.

SYCC carried out over 30 Gardening sessions where we engaged with over 50 individuals.

SYCC expanded the learning of our staff through Manual Handling which 5 staff members completed and Health and Safety which over 10 staff members completed.

SYCC trained over 20 individuals in First Aid.

SYCC trained over 20 individuals in Food Hygiene.

SYCC trained over 20 individuals in Safeguarding.

SYCC offered Work Experience to over 15 students annually.

Poverty Reduction

SYCC's total number of Welfare and Benefits advice sessions totaled to 2,050 visits (2023: 1,955).

SYCC runs a food donation scheme. The Centre donated 1850kg of food to its clients, which equates to 4050 meals.

SYCC supported 80 (2023: 80) individuals with getting online and completing their Council Tax Reduction Scheme Application.

SYCC supported over 150 (2023:150) individuals with their Universal Credit applications.

Smethwick Youth & Community Centre Limited
A Company Limited by Guarantee

Report of The Directors of The Charity *(Continued)*
Year Ended 31 March 2024

FINANCIAL REVIEW

Transactions and Financial Position

A summary statement of financial activities for the year is shown on page 14 of the accounts. This shows that during the year, total income of £439,516 (2023: £372,670) was received and after expenditure a net profit of £51,810 (2023: Loss £73,822) was credited to reserves. The deficit includes a charge of Nil (2023: 61,233) which represents current 12 months of depreciation on the leasehold property. The trustees have not changed the accounting policy on depreciation as it is felt this is more likely to give a true and fair view.

Reserves policy and funds in deficit

It is the policy of the trustees to maintain six months' running costs. The reserves at 31 March 2024 totaled £373,567 (2023: £321,757), however cash held only amounted to £261,032 (2023: £218,272).

There are a number of funds in deficit, including the building works fund and nursery fund. The trustees are in the process of reviewing and rationalizing the funds.

Principal Funding Resources

The principal funding resources during the year were GNG Welfare Fees, Consortium Income, NEF, ELT, SCVO Grant income, EYSFF, Room Booking, Investment Grant, HPLC Grant, Good thing Foundation, Turner Trust Grant etc.

Investment Policy and Returns

Under the memorandum articles of association, the charity has the power to make any investment, which the trustees see fit.

The investment policy has been to choose the best deposit account available that will give high interest for the organisation and also to choose the most flexible current account for efficiency in daily transactions.

It is the policy of the trustees to maintain six months running costs sufficient to ensure that continued operation of the charitable company's activities. The organisation wishes to maintain sufficient cash flow for known commitments.

SYCC Strategic Direction

Performance – Even in this difficult economic climate, SYCC will continue to maintain its high level of performance and quality of its service delivery.

Productivity – SYCC will become more productive by creating efficiencies internally and through the use of engagement tools such as social media and better use of technology including management information systems.

Processes – Through reviewing all processes SYCC will maintain its level of quality delivery, this will ensure SYCC retain the MATRIX quality standard.

People – The essence of SYCC is our people, those being staff and the clients. We will strive to invest in our people; at a strategic level this includes investment in senior management and training for trustees. At an operational this involves equipping staff with the tools to meet their full potential.

Smethwick Youth & Community Centre Limited
A Company Limited by Guarantee

Report of The Directors of The Charity *(Continued)*
Year Ended 31 March 2024

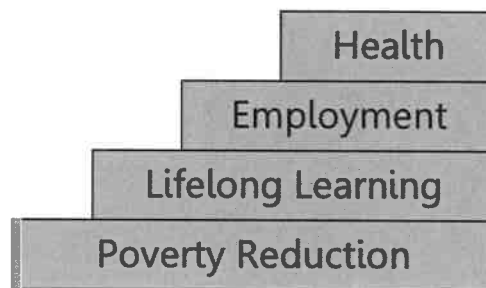
Participation – SYCC will strategically align itself with the governments Localism agenda, focusing on encouraging active participation with local members of the community.

SYCC are Here to HELP:

SYCC continues to work under a new core strategy.

- **Health** (i.e. gym packages, sports)
- **Employment** (i.e. employment packages i.e. creating CV's)
- **Lifelong Learning** (i.e. tuition; literacy, youth services)
- **Poverty Reduction** (i.e. welfare advice)

We will support people on their steps to success:



SYCC are here to "HELP"

SYCC aim to "**HELP**" the local community through their strategy which provides support in the following areas: "**Health**", "**Employability**", "**Learning**" and "**Poverty reduction**".

Health: SYCC provide Health facilities suitable for people of all ages and backgrounds by providing the following activities:

- Yoga for women
- Exercise machines on a drop-in basis
- Weightlifting
- Football sessions
- Karate sessions
- Community Walks
- Healthy cooking

The provide health services aimed at the local community to reduce health risks. Furthermore, SYCC wish to tackle common dangers including depression and stress. With many in the area working long hours therefore struggling to find time to exercise, SYCC will "**HELP**" through providing a combination of everyday healthy living. This includes physical exercise through cardio workouts and valuable knowledge through healthy cooking.

Smethwick Youth & Community Centre Limited
A Company Limited by Guarantee

-
Report of The Directors of The Charity (*Continued*)
Year Ended 31 March 2024

Employability:

- CV's
- Job search
- Basic Computing through UKOnline Centres

Employability opportunities received through SYCC enables clients to enhance their employability chances. We create unemployed clients a CV which will allow them to apply to jobs; providing a steady income and reducing poverty. Moreover, the centre provides support on searching and applying for jobs online.

Learning:

- English classes
- Basic Computing
- Youth Club
- Nursery

Gaining a higher level of education will allow the individual to become more employable as they have extended their skills and knowledge. More career opportunities will be available. Furthermore, adults can help their children with homework which they perhaps cannot provide support for at the moment. The Youth Club provides afterschool activities which encourages the young individuals to interact with one-another and socialise. Many of these young people may not be able to socialise with each other at school in this way. The basic computing provides both learning and enhancing employability; as many jobs require I.T. skills. Finally, with SYCC's new nursery opening, we wish to provide young children with the right steps in their learning pathway. We hope to provide them with opportunities that they may not receive elsewhere. With the high waiting lists in the area to get a child into a nursery, we feel that this opportunity will reduce the wait and raise the chances of a child starting within the applicable year.

Poverty Reduction:

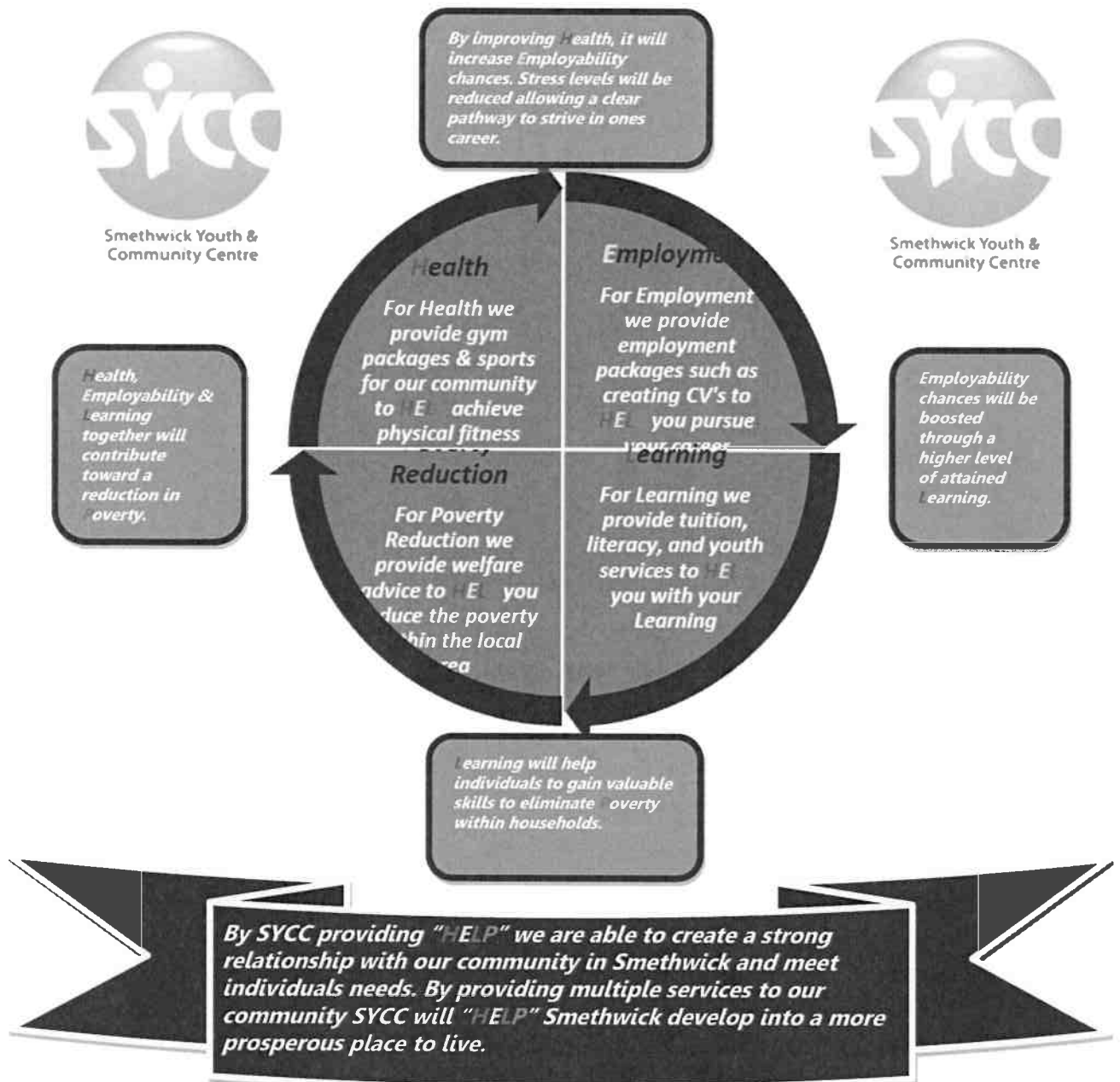
Over 30% of Sandwell's 309,000 populations live in relative poverty. This includes 32% of children under 18 and increasing numbers of children and adults with health and disability needs. Our welfare advisor provides assistance with welfare problems which people living in the local community face within their life.

Together with the combination of Health, Employability & Learning – SYCC will contribute towards Poverty Reduction within the local area.

Smethwick Youth & Community Centre Limited
A Company Limited by Guarantee

Report of The Directors of The Charity (Continued)
Year Ended 31 March 2024

Linkages within the "HELP" strategy



With improved Health, one can strive to become employed and reach their personal and career goals. It will help them to manage their time and reduce stress and depression. Physical exercise will clear their mind and stop them from sinking into an unhealthy lifestyle. The new skills and knowledge obtained from learning will contribute toward employability; as one will be able to use what they have learnt in practise. Employability opportunities provided by SYCC will aim for the individual to work toward a higher income, supporting themselves and their family. With the combination of health, employability, learning, and the welfare advice given from SYCC, it will work towards poverty reduction.

Smethwick Youth & Community Centre Limited
A Company Limited by Guarantee

Report of The Directors of The Charity (Continued)
Year Ended 31 March 2024

Responsibilities of The Directors of The Charity

The directors of the charity are responsible for preparing the Report of the directors of the charity and the financial statements in accordance with applicable law and United Kingdom Generally Accepted Accounting Practice.

Company law requires the directors of the charity to prepare financial statements for each financial year which give a true and fair view of the state of affairs of the charity and of the surplus or deficit of the charity for that period.

In preparing these financial statements, the directors of the charity are required to:

- select suitable accounting policies and then apply them consistently,
- make judgements and estimates that are reasonable and prudent; and
- prepare the financial statements on the going concern basis unless it is inappropriate to presume that the charity will continue in operation.

The directors of the charity are responsible for keeping proper accounting records which disclose with reasonable accuracy at any time the financial position of the charity and which enable them to ensure that the financial statements comply with Companies Act 2006. The directors of the charity are also responsible for safeguarding the assets of the charity and hence for taking reasonable steps for the prevention and detection of fraud and other irregularities

In so far as the directors of the charity are aware

- there is no relevant audit information of which the charity's auditors are unaware, and
- the directors of the charity have taken all steps that they ought to have taken to make themselves aware of any relevant audit information and to establish that the auditors are aware of that information.

This report has been prepared having taken advantage of the small companies' exemption in the Companies Act 2006.

Signed on behalf of the directors of the charity-

x 
Balbir Singh Bhajam (Treasurer)

Date: 18/12/2024

Smethwick Youth & Community Centre Limited
A Company Limited by Guarantee

Independent Examiner's Report to the members of Smethwick Youth & Community Centre Limited.

Year Ended 31 March 2024

I report on the accounts of the charity for the year ended 31 March 2024 which are set out on pages 13 to 24.

Respective responsibilities of trustees and examiner

The charity's trustees are responsible for the preparation of the accounts. The charity's trustees consider that an audit is not required for this year under section 144(2) of the Charities Act 2011 (the 2011 Act) and that an independent examination is needed. It is my responsibility to:

- examine the accounts under section 145 of the 2011 Act;
- follow the procedures laid down in the general Directions given by the Charity Commission under section 145(5)(b) of the 2011 Act; and
- state whether particular matters have come to my attention.

Basis of independent examiner's report

My examination was carried out in accordance with the general Directions given by the Charity Commission. An examination includes a review of the accounting records kept by the charity and a comparison of the accounts presented with those records. It also includes consideration of any unusual items or disclosures in the accounts, and seeking explanations from you as trustees concerning any such matters. The procedures undertaken do not provide all the evidence that would be required in an audit and consequently no opinion is given as to whether the accounts present a "true and fair view" and the report is limited to those matters set out in the statement below.

Independent examiner's statement

In connection with my examination, no matter has come to my attention:

- 1 which gives me reasonable cause to believe that, in any material respect, the requirements:
 - to keep accounting records in accordance with section 130 of the 2011 Act; and
 - to prepare accounts which accord with the accounting records and comply with the accounting requirements of the 2011 Act and with the methods and principles of the statement of recommended practice; accounting and reporting by charities have not been met; or

Smethwick Youth & Community Centre Limited
A Company Limited by Guarantee

**Independent Examiner's Report to the members of Smethwick Youth &
Community Centre Limited.**

Year Ended 31 March 2024

- 2 to which, in my opinion, attention should be drawn in order to enable a proper understanding of the accounts to be reached.

x *DAS, Chartered Accountants*
.....

DAS, Chartered Accountants
6th Floor AMP House
Dingwall Road
Croydon
CR0 2LX

Date: *20/12/24*
.....

Smethwick Youth & Community Centre Limited
A Company Limited By Guarantee

**Statement Of Financial Activities (Incorporating
The Income and Expenditure Account)**

Year Ended 31 March 2024

		Unrestricted Fund 31st March 2024 £	Restricted Fund 31st March 2024 £	Total Fund 31st March 2024 £	Total Fund 31st March 2023 £
	Note				
INCOMING RESOURCES					
Incoming resources from generated funds :					
Voluntary income		142,670	175,965	318,635	234,051
Activities for generating funds	2	120,882	-	120,882	138,619
TOTAL INCOMING RESOURCES		263,552	175,965	439,516	372,670
RESOURCES EXPENDED					
Charitable Activities and Governance Cost	4	(209,422)	(178,284)	(387,706)	(446,492)
TOTAL RESOURCES EXPENDED		(209,422)	(178,284)	(387,706)	(446,492)
NET RESOURCES EXPENDED		54,129	(2,319)	51,810	(73,822)
TOTAL FUNDS BROUGHT FORWARD AT 1ST APRIL 2023		(168,521)	490,278	321,757	395,579
Prior Year Adjustments	7	-	-	-	-
TOTAL FUNDS AT 31ST MARCH 2024		(114,392)	487,959	373,567	321,757
RECONCILIATION OF FUNDS					
		Unrestricted Fund 31st March 2024 £	Restricted Fund 31st March 2024 £	Total Fund 31st March 2024 £	Total Fund 31st March 2023 £
Total Funds Brought Forward		(168,521)	490,278	321,757	395,579
Less : Prior Year Adjustments		-	-	-	-
Total net activity for the year		54,129	(2,319)	51,810	(73,822)
Total Funds Carried forward		(114,392)	487,959	373,567	321,757

The Statement of Financial Activities includes all gains and losses in the year and therefore a statement of total recognised gains and losses has not been prepared. All of the above amounts relate to continuing activities.

Smethwick Youth & Community Centre Limited
A Company Limited By Guarantee

Balance Sheet

Year Ended 31 March 2024

	Note	2024 £	2023 £
FIXED ASSETS			
Tangible Assets	7	26,027	34,810
CURRENT ASSETS			
Debtors & Prepayments	8	90,693	70,111
Cash at Bank & In Hand		261,032	218,272
		<u>351,725</u>	<u>288,383</u>
CREDITORS: Amounts due within one year	9	<u>(4,185)</u>	<u>(1,436)</u>
NET CURRENT ASSETS		347,540	286,947
CREDITORS: Amounts falling due after more than one year		-	-
NET ASSETS		<u><u>373,567</u></u>	<u><u>321,757</u></u>
 FUNDED BY			
Accumulated Unrestricted Income funds	11	(114,392)	(168,521)
Accumulated Restricted Income funds	10	487,959	490,278
TOTAL		<u><u>373,567</u></u>	<u><u>321,757</u></u>

For the year ending 31 March 2024 the company was entitled to exemption from audit under section 477 of the companies Act 2006

The Trustees/Directors have not required the company to obtain an audit in accordance with section 476 of the companies Act 2006

The Trustees/Directors acknowledge their responsibility -

- for complying with the requirements to keep accounting records of Sections 386 and 387 of the Companies Act 2006
- with respect to accounting records and preparation of account, as to the surplus or deficit to give a true and fair view of the charitable financial status

Smethwick Youth & Community Centre Limited
A Company Limited By Guarantee

Balance Sheet

- of the state of affairs of the charitable company at the end of each financial year in accordance with the requirements of Sections 394 and 395 which otherwise comply with the requirements of the Companies Act 2006 relating to financial statements, so far as applicable to the charitable company

The accounts have been prepared in accordance with the provisions applicable to companies subject to the small companies regime and the Financial Reporting Standard for Smaller Entities, 2008.

These financial statements were approved and authorised for issue by the members of the committee on the 18/12/24 and are signed on their behalf by :

x 

Balbir Singh Bhajam
(Treasurer)

Smethwick Youth & Community Centre Limited
A Company Limited By Guarantee

Notes To The Financial Statements

Year Ended 31 March 2024

1. ACCOUNTING POLICIES

Basis of Accounting

The financial statements have been prepared in accordance with the Financial Reporting Standard for Smaller Entities, effective April 2008, the Statement of Recommended Practice "Accounting and Reporting by Charities" issued in January 2019 (SORP JAN 2019) and the Companies Act 2006.

Cash flow statement

The directors of the charity have taken advantage of the exemption in Financial Reporting Standard No 1 (revised) from including a cash flow statement in the financial statements on the grounds that the Company is small.

Fixed assets

All fixed assets are initially recorded at cost

Depreciation

Depreciation is calculated so as to write off the cost of an asset, less its estimated residual value, over the useful economic life of that asset as follows

Office Equipment	- 20% on Reducing balance method.
Fixtures & Fittings	- 20% on Reducing balance method.
Leasehold Property	- 5% on cost
Improvements to property	- 5% on cost

Income recognition

Income is recognized when the charity is entitled to it, there is reasonable certainty that it will be received and it is measurable.

Expenditure and liabilities

Expenditure and the related liabilities are recognised at the point that there is an obligation on the charity to transfer economic benefits. Expenditure include any VAT which cannot be fully recorded, and is reported as part of the expenditure to which of relates to charitable and governance cost.

Apportionment of costs

Costs are applied on a fair basis to the various projects, keeping in mind that certain projects are based on delivery of outputs, therefore costs are allocated to the fund to reflect the fact that the outputs have been delivered.

Funds

Restricted funds are recognised when a donor specifies that the funds are to be spent for a particular purpose. All other funds are classified as unrestricted.

Smethwick Youth & Community Centre Limited
A Company Limited By Guarantee

Notes To The Financial Statements

2 VOLUNTARY INCOME	Unrestricted Fund 31st March 2024 £	Restricted Fund 31st March 2024 £	Total Fund 31st March 2024 £	Total Fund 31st March 2023 £
Donations				
Miscellaneous	-	-	-	-
GNG Nursery Fees	120,882	-	120,882	138,619
Grants receivable				
BMET	-	-	-	-
Youth Interfaith Club	-	-	-	-
DWP	-	-	-	-
HPCL_Employments	-	-	-	-
Welfare	-	-	-	-
Worker Education	-	-	-	-
Consortium	142,670	-	142,670	88,279
RSA Insurance	-	-	-	-
Steps	-	-	-	-
NEF	-	-	-	-
ELT	-	31,580	31,580	31,192
Child care invest me	-	-	-	390
Booking	-	-	-	-
EYPP	-	-	-	-
STP	-	-	-	-
Core Cost	-	-	-	-
UK Online	-	-	-	-
Good Things Foundation	-	3,600	3,600	6,900
SCVO income	-	9,650	9,650	-
HMRC JRS Grant	-	-	0	-
Covid Grant	-	-	0	-
SYCC HAF 2023 Easter Grant	-	-	0	2,172
EYSFF	-	55,823	55,823	92,865
Miscellaneous income	-	75,311	75,311	12,253
	263,552	175,965	439,516	372,670

3 INCOME OF CHARITABLE ACTIVITIES BY FUND TYPE

	Unrestricted Fund 31st March 2024 £	Restricted Fund 31st March 2024 £	Total Fund 31st March 2024 £	Total Fund 31st March 2023 £
Donations/Collections	-	-	-	-
GNG Nursery Fees	120,882	-	120,882	138,619
Employment	-	-	-	-
Adult Education	-	-	-	-
Child Education	-	31,580	31,580	31,192
Child care invest me	-	-	-	390
Youth	-	-	-	-
Health	-	-	-	-
Consortium	142,670	-	142,670	88,279
Booking	-	-	-	-
Prior period adjustment - NEF/ELT	-	-	-	-

Smethwick Youth & Community Centre Limited
A Company Limited By Guarantee

Notes To The Financial Statements

HMRC JRS Grant	-	-	-
Good Things Foundation	3,600	3,600	6,900
SCVO income	9,650	9,650	-
SYCC HAF 2023 Easter Grant	-	-	2,172
EYSFF	55,823	55,823	92,865
Miscellaneous income	-	75,311	75,311
	263,552	175,965	439,516
			372,670

Smethwick Youth & Community Centre Limited
A Company Limited By Guarantee
Notes To The Financial Statements

4 GOVERNANCE & CHARITABLE COST

	Unrestricted Funds 2024 £	Restricted Funds 2024 £	Total 31st March 2024 £	Total 31st March 2023 £
Wages & Salaries	179,169	76,787	255,956	265,424
Staff pension costs	2,845	1,219	4,064	4,079
Staff training	742	366	1,108	454
Rent & Rates	32	1,835	1,867	3,352
Insurances	-	3,471	3,471	3,647
Light & Heat	-	15,815	15,815	7,574
Cleaning & Toiletries	2,842	1,164	4,006	5,071
Repairs & Renewals	408	343	751	1,984
Printing, Postage & Stationery	-	1,849	1,849	10,709
Advertising & Promotion	815	349	1,164	-
Telephone	-	8,248	8,248	7,675
Computer costs	1,205	516	1,721	-
Community Engagement Activities	-	159	159	159
Bad debts	-	-	-	185
Tuition Fees	-	-	-	-
Professional Charges	1,237	42,461	43,698	42,348
Accountancy Fees	-	3,036	3,036	3,036
Audit fees	-	2,304	2,304	2,304
Bank interest & Charges	-	96	96	103
Sundries	6,962	3,703	10,665	9,957
Donations	-	-	-	-
Subscription	928	804	1,732	1,338
Prior year income reversed	-	13,115	13,115	-
GNG Nursery expenses	3,454	644	4,098	6,677
Depreciation	8,783	-	8,783	70,416
	209,422	178,284	387,706	446,492

5 NET RESOURCES EXPENDED FOR THE YEAR

This is stated after charging:	2024 £	2023 £
Depreciation	8,783	70,416
Auditor's remuneration: - audit of the financial statements	2,304	2,304
	11,087	72,720

Smethwick Youth & Community Centre Limited
A Company Limited By Guarantee
Notes To The Financial Statements

6 STAFF COSTS AND EMOLUMENTS

Total staff costs were as follows:

	2024	2023
	£	£
Wages and salaries	245,559	254,543
Social security costs	10,397	10,881
	<u>255,956</u>	<u>265,424</u>

Particulars of employees:

The average number of employees during the year, calculated on the basis of full-time equivalents, was as follows:

	2024	2023
	No	No
Project manager	1	1
Finance officer	1	1
Fundraising	1	1
Charitable activities	14	18
Administration and support	2	1
	<u>19</u>	<u>22</u>

No employee received emoluments of more than £60,000 during the year Nil (2023 - Nil).

The trustees received no remuneration or expenses, either directly or indirectly from the charity.

Smethwick Youth & Community Centre Limited
A Company Limited By Guarantee
Notes To The Financial Statements
Year Ended 31 March 2024

7 TANGIBLE FIXED ASSETS

COST	Improvements to property £	Equipment £	Fixtures & Fittings £	Leasehold Property £	Total £
1st April 2023	122,616	53,218	162,551	1,224,713	1,563,098
Additions	-	-	-	-	-
As at 31st March 2024	122,616	53,218	162,551	1,224,713	1,563,098
DEPRECIATION					
1st April 2023	101,070	50,124	152,382	1,224,712	1,528,288
Charge for the year	6,130	619	2,034	-	8,783
As at 31st March 2024	107,200	50,743	154,416	1,224,712	1,537,071
Net Book Value					
1st April 2023	21,546	3,094	10,169	1	34,810
1st April 2024	15,416	2,475	8,135	1	26,027

The leasehold property comprises land and buildings. The land was leased from Guru Nanak Gurdwara (GNG) Smethwick, for a term of ten years until 5th April 2013. No depreciation was charged until 31 March 2013, on the grounds that the lease would be renewed for the foreseeable future. The trustees now feel that it is more prudent to depreciate the property, and this has been charged on the basis that the original lease was intended to run for twenty years. Thus the property is now shown Fully depreciated.

The trustees had and will continue to allow Smethwick Youth & Community Centre to use the premises for charitable purpose for foreseeable future until being informed otherwise.

Smethwick Youth & Community Centre Limited
A Company Limited By Guarantee
Notes To The Financial Statements
Year Ended 31 March 2024

8 DEBTORS

	2024	2023
	£	£
Trade debtors	2,915	13,115
Sandwell Metropolitan Borough Council	-	-
Furlough Grant	-	-
Prepayments	2,778	1,996
Other debtors (Lyreco)	-	-
Other debtors (Midshire Communications Limited)	-	-
Gururanak Gurudwara Loan	70,000	40,000
Utility Prepayment	15,000	15,000
	<u>90,693</u>	<u>70,111</u>

9 CREDITORS: Amounts falling due within one year

	2024	2023
	£	£
Trade creditors	-	-
Taxation and social security	3,234	570
Other creditors	-	-
Accrued expense	-	-
Pension contributions	951	866
	<u>4,185</u>	<u>1,436</u>

Smethwick Youth & Community Centre Limited
A Company Limited By Guarantee

Notes To The Financial Statements

Year Ended 31 March 2024

10 ACCUMULATED RESTRICTED INCOME FUNDS

	Notes	Bal b/fd 1st April 2023	Income Resources	Outgoing Resources	Balance at 31st March 2024
Restricted Funds:					
SYCC Building works		(1,137,874)		178,284	(1,316,157)
Core		4,500			4,500
UK Online		215,403	-		215,403
Child care invest me		37,802	-		37,802
Youth Interfaith Club		6,900			6,900
Steps		62,965	-		62,965
PAYP		9,576			9,576
Baron		800			800
Edwards		1,000			1,000
DWP		13,520			13,520
HPCL_Employments		12,000			12,000
GNG Welfare		24,000			24,000
Worker Education		1,490			1,490
Midshire		3,581			3,581
NEF		633,048	-		633,048
ELT		328,691	31,580		360,272
Sports		7,715			7,715
Good Things Foundation		27,075	3,600		30,675
EYSFF		255,209	55,823		311,032
Miscellaneous income		-	75,311		75,311
SCVO income		(17,124)	9,650		(7,474)
Total Restricted Funds		490,278	175,965	178,284	487,959

11 ACCUMULATED UNRESTRICTED INCOME FUNDS

		Bal b/fd 1st April 2023	Income Resources	Outgoing Resources	Balance at 31st March 2024
SRB4		798			798
SRB6		(17,289)			(17,289)
SRB6 e		10,750			10,750
IAG		44,514			44,514
AXA		(1,580)			(1,580)
HMRC online filing income		250			250
Childrens Fund		153			153
Dudley College		91,911			91,911
South Birmingham College		7,250			7,250
Other Unrestricted Income		20,204	-		20,204
SYCC Income		2,699			2,699

Smethwick Youth & Community Centre Limited
A Company Limited By Guarantee

Notes To The Financial Statements

Year Ended 31 March 2024

Private Tutition	3,124			3,124
IDS-Donation	6,688			6,688
GNG Income - Nursery	(1,430,597)	120,882	209,422	(1,519,138)
Birmingham Chamber of Commerce	1,425			1,425
C & C	13,599			13,599
Computer	405			405
Room Hire	2,442			2,442
IFA	4,975			4,975
Donation	4,915			4,915
Citizen	3,139			3,139
DAF2 Training	10,873			10,873
Digital	2,000			2,000
BuddyUp	18,000			18,000
NLDC2	3,764			3,764
NLDC3	5,647			5,647
Sandwell College	17,302			17,302
WNF3	189,560			189,560
WNF_R&D	13,500			13,500
WNF4_ESOL_Phase1	4,014			4,014
WNF4_ESOL_Phase2	12,124			12,124
PAYP	7,542			7,542
Calibre	1,076			1,076
SFVVO	1,500			1,500
WNF_EMP	8,746			8,746
Big Lottery - Advice Services Fund	57,500			57,500
BMET	3,440			3,440
Consortium	519,066	142,670		661,736
SCOLL	2,400			2,400
STP	4,667			4,667
Booking	650	-		650
HMRC JRS Grant	76,395	-		76,395
Covid Grant	62,249	0		62,249
The Winston Churchill Fellowship	22,253	0		22,253
Vision Grant-SCVO	17,435	0		17,435
Total Unrestricted Funds	(168,521)	263,552	209,422	(114,392)
Total Funds	321,757	439,516	387,706	373,567

12 COMPANY LIMITED BY GUARANTEE -

Smethwick Youth & Community Centre is a company limited by guarantee and accordingly does not have a share capital.

Every member of the company undertakes to contribute such amount as may be required not exceeding £1 to the assets of the charitable company in the event of its being wound up while he or she is a member, or within one year after he or she ceases to be a member.

13 RELATED PARTIES

As disclosed in the Trustees' Report, Guru Nanak Gurdwara (GNG) Smethwick, a registered charity, is the main related party, as a set number of trustees of the charity are required to be selected from the GNG committee. The charity leases land from GNG, as disclosed in the note on fixed assets. The terms of the lease include a peppercorn rent. No rent was paid during the period. An amount of £15,000 (2023: 5,000) was contributed by SYCC to the share of Utilities. SYCC also made a prepayment of £15,000 (2023: 15,000) for future Utility Costs. SYCC has also loaned GNG an amount of 70,000 (2023: 40,000).



CHARITY COMMISSION
FOR ENGLAND AND WALES

Independent examiner's report on the accounts

Section A

Independent Examiner's Report

Report to the trustees

Charity Name

Smethwick Community Youth Centre Limited

On accounts for the year ended

31 March 2024

Charity no
(if any)

1090529

Set out on pages

1 TO 25

(remember to include the page numbers of additional sheets)

I report to the trustees on my examination of the accounts of the above charity ("the Trust") for the year ended 31 March 2024.

Responsibilities and basis of report

As the charity's trustees, you are responsible for the preparation of the accounts in accordance with the requirements of the Charities Act 2011 ("the Act").

I report in respect of my examination of the Trust's accounts carried out under section 145 of the 2011 Act and in carrying out my examination, I have followed all the applicable Directions given by the Charity Commission under section 145(5)(b) of the Act.

Independent examiner's statement

[The charity's gross income exceeded £250,000 and I am qualified to undertake the examination by being a qualified member of [insert name of applicable listed body]]. Delete [] if not applicable.

I have completed my examination. I confirm that no material matters have come to my attention in connection with the examination (other than that disclosed below *) which gives me cause to believe that in, any material respect:

- the accounting records were not kept in accordance with section 130 of the Charities Act; or
- the accounts did not accord with the accounting records; or
- the accounts did not comply with the applicable requirements concerning the form and content of accounts set out in the Charities (Accounts and Reports) Regulations 2008 other than any requirement that the accounts give a 'true and fair' view which is not a matter considered as part of an independent examination.

I have no concerns and have come across no other matters in connection with the examination to which attention should be drawn in this report in order to enable a proper understanding of the accounts to be reached.

* Please delete the words in the brackets if they do not apply.

Signed:

Date:

20/12/24

Name:

Tushar Magia

Relevant professional qualification(s) or body

ICAEW

Δ101 / TM

(if any):

Address:

6th Floor, AMP House

Dingwall Road,

Croydon CR0 2LX

Section B

Disclosure

Only complete if the examiner needs to highlight material matters of concern (see CC32, Independent examination of charity accounts: directions and guidance for examiners).

Give here brief details of any items that the examiner wishes to disclose.

M
20/12/24