

Company Registration Number 04201736

Smethwick Youth & Community Centre Limited
A Company Limited by Guarantee
Financial Statements
31 March 2023

Charity Number 1090529

Smethwick Youth & Community Centre Limited
A Company Limited by Guarantee

Financial Statements

Year Ended 31 March 2023

CONTENTS	PAGE
Report of the directors/trustees of the charity	1-10
Independent Examiner's Report	11-13
Statement of Financial Activities (incorporating the Income and expenditure account)	14
Balance sheet	15-16
Notes to the financial statements	17-26

Smethwick Youth & Community Centre Limited
A Company Limited by Guarantee

Report of The Directors/Trustees of The Charity
Year Ended 31 March 2023

The directors of the charity, who are also directors for the purposes of company law, have pleasure in presenting their report and the financial statements of the charity for the year ended 31 March 2023.

Reference and Administrative Details

Registered charity name : Smethwick Youth & Community Centre Limited

Charity registration number : 1090529

Company registration number : 04201736

Registered office and Operational address : Trinity Point
1 Trinity Street
Smethwick
West Midlands
B67 7AA

The Directors of the Charity :

The directors of the charity who served the Company during the year were as follows:

Humraaj Singh Shergill (Chairperson)
Jatinder Singh Basi (Director)
Balbir Singh Bhajam (Director)
Parbinder Kaur (Director)
Gurpal Singh (Director)
Kuldeep Singh Deol (Director)
Pervinder Kaur (Director)
Harjinder Singh Malhi (Director)
Hardev Singh Mund (Director) (Resigned on 17/04/23)

Secretary : Harjinder Singh Malhi

Other co-opted members : Chuhar Singh Dhariwal

Auditors : DAS, Chartered Accountants
6th Floor AMP House
Dingwall Road
Croydon
CR0 2LX

Bankers : Barclays Bank Plc
Leicester
LE87 2BB

Smethwick Youth & Community Centre Limited

A Company Limited by Guarantee

Report of The Directors of The Charity *(Continued)*

Year Ended 31 March 2023

Structure, Governance and Management

Governing Document

The organization is a charitable company limited by guarantee, incorporated on 19 April 2001 and registered as a charity on 11 February 2002. The company was established under a Memorandum of Association which established the objects and powers of the charitable company and is governed under its Articles of Association. In the event of the company being wound up members are required to contribute an amount not exceeding £1.

Recruitment and Appointment of the Directors of the Charity

Majority of the directors of the company are charity trustees for the purposes of charity law and under the company's Articles are known as directors of the charity. Under the requirements of the Memorandum and Articles of Association, there must be a minimum of nine trustees. The trustees must consist of not less than five representatives from the management committee of the Guru Nanak Gurdwara, High Street, Smethwick and not less than four members of the charity, elected at the annual general meeting, three of whom shall be young people representatives (at least 1 being female and 1 between the age of 18 and 25) and one elderly user. One third of the longest serving trustees are subject to retirement by rotation at the annual general meeting.

Some of the trustees are expected to retire at the next Annual General Meeting by Rotation and offer themselves for re-election.

New trustees will be appointed, if the number of remaining trustees is less than the required minimum under the Articles of Association.

Public Benefit

We have referred to the guidance in the Charity Commission's general guidance on public benefit when reviewing our aims and objectives and in planning our future activities. In particular the trustees consider how planned activities will contribute to the aims and objectives they have set.

Risk Management

The trustees confirm that the major risks to which the charity is exposed have been reviewed and systems have been established to minimise those risks. The trustees have implemented a risk management strategy which comprise:

- an annual review of the risks which charity may face
- establishment of systems and procedures to mitigate those risk identified in the plan and -the implementation of procedures designed to minimise any potential impact on the charity

Smethwick Youth & Community Centre Limited

A Company Limited by Guarantee

Report of The Directors of The Charity (*Continued*)

Year Ended 31 March 2023

Organisational Structure

The centre has nine trustees who meet quarterly to consider the strategic direction and performance of the charity. The trustees work under the stewardship of Humraaj Singh Shergill as Chairperson to ensure the charity maintains its strategic direction and is managed in a professional manner.

The management team present the trustees at the meeting with strategic planning reports, such as financial reviews, project feedback reports, schedule of planned activities for the future and any other issues which require the attention of the trustees.

Related Parties

The charity has been set up under the leadership of Guru Nanak Gurdwara (GNG) High Street, Smethwick with particular emphasis on serving and supporting the whole community of Sandwell and Smethwick. It is a requirement of the Articles of Association that trustees' positions are reserved for the President and the General Secretary and three other members of the management committee of the GNG. There is no doubt that the charity benefits immensely from the inspirational support and voluntary leadership provided by the members of the GNG.

SYCC Mission, Vision and Aims & Objectives

Mission Statement

To develop a multi-agency and cross sector resource centre particularly for the Sikh-Punjabi community in Smethwick

That provides a one-stop solution to

- **REDUCE** social deprivation & exclusion, low levels of skills, social isolation, crime and drug misuse,
- **RAISE** educational standards;
- **IMPROVE** health, employment opportunities, household incomes and,
- **SUPPORT** SME business regeneration and diversification pathways leading to vibrant community regeneration and strengthening of the local neighbourhood

SYCC's Vision

Incorporate a holistic approach to a multiagency facility in the heart of Smethwick Town Centre (High Street) that will enable it to deliver services and provide access to resources across communities and across disciplines

Bridge the skills divide between the local communities and provide a supporting pathway that develops user confidence and promotes access of mainstream provision.

SYCC'S Aims & Objectives

SYCC's mission as explained above is to foster and support the development of individuals, groups and organisations within the Sikh Punjabi community, in particular, tenants living in or around Smethwick Whilst it will provide its services for all local people and has an open door, non-judgemental policy, it will have as its ultimate aim to address the needs of the Sikh Punjabi community

This community is an ethnic group that has often been left behind in terms of employment and educational opportunities, affordable quality housing, access to health and social services, as well as a lack of specific voluntary support structures, strategic- representation and political influence.

Smethwick Youth & Community Centre Limited

A Company Limited by Guarantee

Report of The Directors of The Charity (*Continued*)

Year Ended 31 March 2023

SYCC's aim is to redress this balance through providing one-stop services for the target community to access work, education, health, housing and services locally. Its capacity and scope have been widened through strong support and partnerships locally.

Key Achievements:

SYCC's main achievement in this financial year is the refocusing of our Nursery and Projects to adjust to the overwhelming demands of the Cost of Living Crisis. With some difficult decisions having to be made and costs being cut back in many areas of its operations. SYCC has invested heavily in developing its services to adjust to community need. With a difficult economic climate, the decision was made to diversify the organisation's operations in order to sustain the charity. The Nursery is growing and is being supported by SYCC's team in its development; the number of Centre Projects has increased as well as the centre's client base.

SYCC Nursery:

Driven by community feedback and the changes to the economic and funding climate SYCC has invested in the development of a Nursery. The Nursery has been set up and named **GNG Nursery**. The Nursery operates from the existing SYCC premises, Monday to Friday; 8.00 am to 5.00 pm. The financial investment into the venture will allow SYCC to both continue to provide a community service and bridge the financial gaps brought about by funding cuts in the sector.

The Nursery has also been given a Food Hygiene rating of 5/5.

Children on Roll:

Over 68 (2022: 51) children presently on roll at GNG Nursery

Staff Members:

12 Staff Members (2022: 22)

2 Students

Parental Engagement:

- Nursery focused on Speech, Language and Communication and took part in programs to help develop children's speech and to narrow the gaps that occurred during Covid. We did this by holding a 'Read Together' program with parents and children.
- Parents to start reading sessions with children once a month to help develop speech and language.

Community Engagement:

- GNG Nursery conducted several activities that engaged with the community. We were involved in the Harvest collections for food banks and low-income families.
- Additionally, the Nursery had several visits with the children to local amenities. We visited Guru Nanak Gurdwara Smethwick, Smethwick Library and Trinity Church

Nursery Engagement:

- Our Ofsted inspection took place in April where we were rated "GOOD" in all areas which included: The Quality of Education, Behaviour and Attitudes, Personal Development and Leadership and Management. Additionally, we received positive feedback from the parents. The report stated the fact that "staff praise children and encourage them to keep

trying, which builds their self-esteem. This works well and older children show high levels of confidence and resilience.”

- Nursery conducted a Speech and Language programme for parents whose English is not their first language. The Nursery also promoted English Classes and were able to provide childcare for parents that registered on the Centre’s English Classes.
- GNG Nursery was proud to be shortlisted in the Nursery World National Awards. The Nursery managed to achieve runner up in the Community Support Category.

SYCC Projects

SYCC has maintained the usage of the new GNG Community Annexe to provide community services.

As regards to project activities in the past year SYCC has achieved the following:

HHealth

SYCC has engaged with over 200 (2022: 250) people on its Health activities this year.

SYCC provides Yoga classes every Thursday to over 60 (2022: 100) people annually.

SYCC provides Healthy Cooking classes every Thursday to over 50 (2022: 60) people annually.

SYCC runs Healthy Walking Sessions on Friday’s for its users. This is attended by 40 (2022: 100) people annually.

SYCC runs Football Sessions for Young People engaging with over 60 (2022: 75) participants annually.

Smethwick Youth & Community Centre Limited **A Company Limited by Guarantee**

Report of The Directors of The Charity *(Continued)* **Year Ended 31 March 2023**

Employment

SYCC provided assistance to over 2,000 job searches.

SYCC runs a job search and CV updating service, this is coordinated through volunteers.

SYCC managed a 50+ project Employment Support project aiding 32 participants.

The 50+ projects provided support with engaging in education, gaining qualification, engaging in life skills, and engaging in the benefit system.

The 50+ projects carried out two trips, those being Cadbury World and Smethwick Heritage Centre.

SYCC delivers BRIDGES and Family Matters – both Employment and Training support projects.

The BRIDGES Project saw engagement with 46 individuals regarding help with training, education and employment on a one-to-one basis.

The Family Matters Project had engagement with 27 individuals to aid with work readiness.

Learning

SYCC provide Pre-Entry and Entry Level 1 English classes on Mondays, Tuesdays, Thursdays, and Fridays. This was funded through the SLN Project. This project has seen a total of 59 participants.

SYCC carried out over 30 Gardening sessions where we engaged with over 50 individuals.

SYCC expanded the learning of our staff through Manual Handling which 5 staff members completed and Health and Safety which over 10 staff members completed.

SYCC trained over 25 individuals in First Aid.

SYCC trained over 25 individuals in Food Hygiene.

SYCC trained over 25 individuals in Safeguarding.

SYCC offered Work Experience to over 10 students annually.

Poverty Reduction

SYCC's total number of Welfare and Benefits advice sessions totaled to 1,955 visits (2022: 1200).

SYCC runs a food donation scheme. The Centre donated 1290kg of food to its clients, which equates to 3070 meals.

SYCC supported 80 (2022: 80) individuals with getting online and completing their Council Tax Reduction Scheme Application.

SYCC supported over 150 (2022:50) individuals with their Universal Credit applications.

Smethwick Youth & Community Centre Limited
A Company Limited by Guarantee

Report of The Directors of The Charity (*Continued*)
Year Ended 31 March 2023

FINANCIAL REVIEW

Transactions and Financial Position

A summary statement of financial activities for the year is shown on page 13 of the accounts. This shows that during the year, total income of £372,670 (2022: £396,438) was received and after expenditure a net deficit of £73,822 (2022: £86,911) was debited to reserves. The deficit includes a charge of £61,233 (2022: 61,236) which represents current 12 months of depreciation on the leasehold property. The trustees have not changed the accounting policy on depreciation as it is felt this is more likely to give a true and fair view.

Reserves policy and funds in deficit

It is the policy of the trustees to maintain six months' running costs. The reserves at 31 March 2023 totaled £321,757 (2022: £395,579), however cash held only amounted to £218,272 (2022: £279,943).

There are a number of funds in deficit, including the building works fund and nursery fund. The trustees are in the process of reviewing and rationalizing the funds.

Principal Funding Resources

The principal funding resources during the year were GNG Welfare Fees, Consortium Income Baron, Edwards, DWP, HPCL_Employments, Worker education, Consortium, Child Education, Child care Investments, Grant, NEF, ELT, EYSFF, Booking, PAYP, STP, Good thing Foundation, SYCC Easter Grant etc.

Investment Policy and Returns

Under the memorandum articles of association, the charity has the power to make any investment, which the trustees see fit.

The investment policy has been to choose the best deposit account available that will give high interest for the organisation and also to choose the most flexible current account for efficiency in daily transactions.

It is the policy of the trustees to maintain six months running costs sufficient to ensure that continued operation of the charitable company's activities. The organisation wishes to maintain sufficient cash flow for known commitments.

SYCC Strategic Direction

Performance – Even in this difficult economic climate, SYCC will continue to maintain its high level of performance and quality of its service delivery.

Productivity – SYCC will become more productive by creating efficiencies internally and through the use of engagement tools such as social media and better use of technology including management information systems.

Processes – Through reviewing all processes SYCC will maintain its level of quality delivery, this will ensure SYCC retain the MATRIX quality standard.

People – The essence of SYCC is our people, those being staff and the clients. We will strive to invest in our people; at a strategic level this includes investment in senior management and training for trustees. At an operational this involves equipping staff with the tools to meet their full potential.

Smethwick Youth & Community Centre Limited
A Company Limited by Guarantee

Report of The Directors of The Charity *(Continued)*
Year Ended 31 March 2023

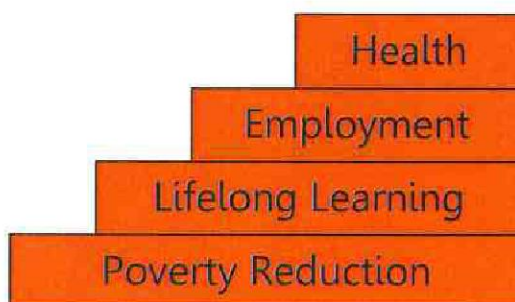
Participation – SYCC will strategically align itself with the governments Localism agenda, focusing on encouraging active participation with local members of the community.

SYCC are Here to HELP:

SYCC continues to work under a new core strategy.

- **Health** (i.e. gym packages, sports)
- **Employment** (i.e. employment packages i.e. creating CV's)
- **Lifelong Learning** (i.e. tuition; literacy, youth services)
- **Poverty Reduction** (i.e. welfare advice)

We will support people on their steps to success:



SYCC are here to “HELP”

SYCC aim to “**HELP**” the local community through their strategy which provides support in the following areas: “**H**health”, “**E**mployability”, “**L**earning” and “**P**overty reduction”.

Health: SYCC provide Health facilities suitable for people of all ages and backgrounds by providing the following activities:

- Yoga for women
- Exercise machines on a drop-in basis
- Weightlifting
- Football sessions
- Karate sessions
- Community Walks
- Healthy cooking

The provide health services aimed at the local community to reduce health risks. Furthermore, SYCC wish to tackle common dangers including depression and stress. With many in the area working long hours therefore struggling to find time to exercise, SYCC will “HELP” through providing a combination of everyday healthy living. This includes physical exercise through cardio workouts and valuable knowledge through healthy cooking.

Smethwick Youth & Community Centre Limited
A Company Limited by Guarantee

Report of The Directors of The Charity (*Continued*)
Year Ended 31 March 2023

Employability:

- CV's
- Job search
- Basic Computing through UKOnline Centres

Employability opportunities received through SYCC enables clients to enhance their employability chances. We create unemployed clients a CV which will allow them to apply to jobs; providing a steady income and reducing poverty. Moreover, the centre provides support on searching and applying for jobs online.

Learning:

- English classes
- Basic Computing
- Youth Club
- Nursery

Gaining a higher level of education will allow the individual to become more employable as they have extended their skills and knowledge. More career opportunities will be available. Furthermore, adults can help their children with homework which they perhaps cannot provide support for at the moment. The Youth Club provides afterschool activities which encourages the young individuals to interact with one-another and socialise. Many of these young people may not be able to socialise with each other at school in this way. The basic computing provides both learning and enhancing employability; as many jobs require I.T. skills. Finally, with SYCC's new nursery opening, we wish to provide young children with the right steps in their learning pathway. We hope to provide them with opportunities that they may not receive elsewhere. With the high waiting lists in the area to get a child into a nursery, we feel that this opportunity will reduce the wait and raise the chances of a child starting within the applicable year.

Poverty Reduction:

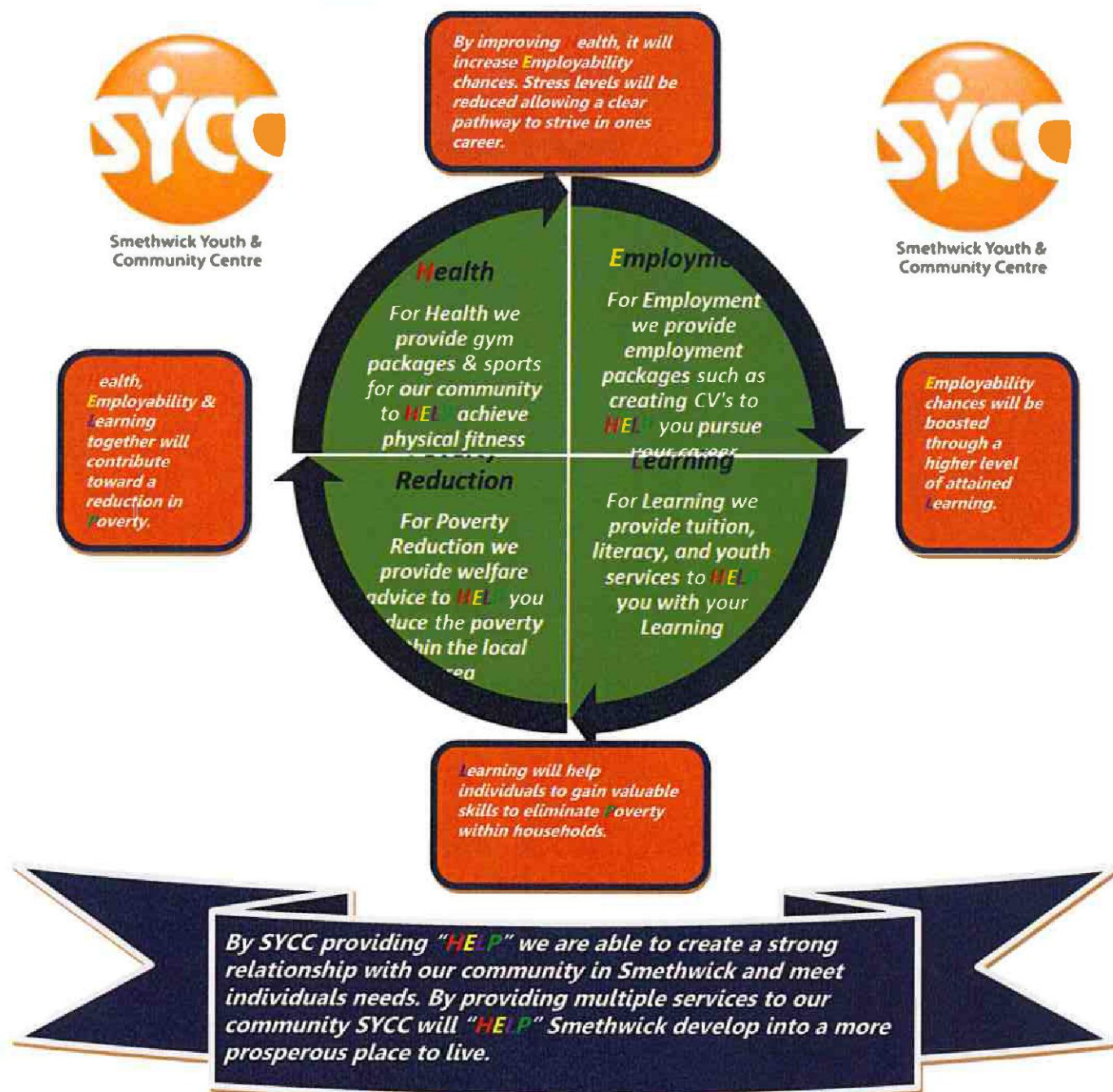
Over 30% of Sandwell's 309,000 populations live in relative poverty. This includes 32% of children under 18 and increasing numbers of children and adults with health and disability needs. Our welfare advisor provides assistance with welfare problems which people living in the local community face within their life.

Together with the combination of **Health**, **Employability** & **Learning** – SYCC will contribute towards **Poverty Reduction** within the local area.

Smethwick Youth & Community Centre Limited
A Company Limited by Guarantee

Report of The Directors of The Charity (Continued)
Year Ended 31 March 2023

Linkages within the "HELP" strategy



With improved Health, one can strive to become employed and reach their personal and career goals. It will help them to manage their time and reduce stress and depression. Physical exercise will clear their mind and stop them from sinking into an unhealthy lifestyle. The new skills and knowledge obtained from learning will contribute toward employability; as one will be able to use what they have learnt in practise. Employability opportunities provided by SYCC will aim for the individual to work toward a higher income, supporting themselves and their family. With the combination of health, employability, learning, and the welfare advice given from SYCC, it will work towards poverty reduction.

Smethwick Youth & Community Centre Limited
A Company Limited by Guarantee

Report of The Directors of The Charity (*Continued*)
Year Ended 31 March 2023

Responsibilities of The Directors of The Charity

The directors of the charity are responsible for preparing the Report of the directors of the charity and the financial statements in accordance with applicable law and United Kingdom Generally Accepted Accounting Practice.

Company law requires the directors of the charity to prepare financial statements for each financial year which give a true and fair view of the state of affairs of the charity and of the surplus or deficit of the charity for that period.

In preparing these financial statements, the directors of the charity are required to:

- select suitable accounting policies and then apply them consistently,
- make judgements and estimates that are reasonable and prudent; and
- prepare the financial statements on the going concern basis unless it is inappropriate to presume that the charity will continue in operation.

The directors of the charity are responsible for keeping proper accounting records which disclose with reasonable accuracy at any time the financial position of the charity and which enable them to ensure that the financial statements comply with Companies Act 2006. The directors of the charity are also responsible for safeguarding the assets of the charity and hence for taking reasonable steps for the prevention and detection of fraud and other irregularities

In so far as the directors of the charity are aware

- there is no relevant audit information of which the charity's auditors are unaware, and
- the directors of the charity have taken all steps that they ought to have taken to make themselves aware of any relevant audit information and to establish that the auditors are aware of that information.

This report has been prepared having taken advantage of the small companies' exemption in the Companies Act 2006.

Signed on behalf of the directors of the charity-

x 

Balbir Singh Bhajam (Treasurer)

Date: 18/12/2023

Smethwick Youth & Community Centre Limited
A Company Limited by Guarantee

Independent Examiner's Report to the members of Smethwick Youth & Community Centre Limited.

Year Ended 31 March 2023

I report on the accounts of the charity for the year ended 31 March 2023 which are set out on pages 13 to 24.

Respective responsibilities of trustees and examiner

The charity's trustees are responsible for the preparation of the accounts. The charity's trustees consider that an audit is not required for this year under section 144(2) of the Charities Act 2011 (the 2011 Act) and that an independent examination is needed. It is my responsibility to:

- examine the accounts under section 145 of the 2011 Act;
- follow the procedures laid down in the general Directions given by the Charity Commission under section 145(5)(b) of the 2011 Act; and
- state whether particular matters have come to my attention.

Basis of independent examiner's report

My examination was carried out in accordance with the general Directions given by the Charity Commission. An examination includes a review of the accounting records kept by the charity and a comparison of the accounts presented with those records. It also includes consideration of any unusual items or disclosures in the accounts, and seeking explanations from you as trustees concerning any such matters. The procedures undertaken do not provide all the evidence that would be required in an audit and consequently no opinion is given as to whether the accounts present a "true and fair view" and the report is limited to those matters set out in the statement below.

Independent examiner's statement

In connection with my examination, no matter has come to my attention:

- 1 which gives me reasonable cause to believe that, in any material respect, the requirements:
 - to keep accounting records in accordance with section 130 of the 2011 Act; and
 - to prepare accounts which accord with the accounting records and comply with the accounting requirements of the 2011 Act and with the methods and principles of the statement of recommended practice; accounting and reporting by charities have not been met; or

Smethwick Youth & Community Centre Limited
A Company Limited by Guarantee

**Independent Examiner's Report to the members of Smethwick Youth &
Community Centre Limited.**

Year Ended 31 March 2023

- 2 to which, in my opinion, attention should be drawn in order to enable a proper understanding of the accounts to be reached.

X 

.....
DAS, Chartered Accountants
6th Floor AMP House
Dingwall Road
Croydon
CR0 2LX

Date: 19/12/2023

Smethwick Youth & Community Centre Limited
A Company Limited By Guarantee

**Statement Of Financial Activities (Incorporating
The Income and Expenditure Account)**

Year Ended 31 March 2023

		Unrestricted Fund 31st March 2023 £	Restricted Fund 31st March 2023 £	Total Fund 31st March 2023 £	Total Fund 31st March 2022 £
	Note				
INCOMING RESOURCES					
Incoming resources from generated funds :					
Voluntary income	2	102,704	131,347	234,051	259,553
Activities for generating funds		138,619	-	138,619	136,885
TOTAL INCOMING RESOURCES		241,323	131,347	372,670	396,438
RESOURCES EXPENDED					
Charitable Activities and Governance Cost	4	(276,032)	(170,460)	(446,492)	(483,349)
TOTAL RESOURCES EXPENDED		(276,032)	(170,460)	(446,492)	(483,349)
NET RESOURCES EXPENDED		(34,709)	(39,113)	(73,822)	(86,911)
TOTAL FUNDS BROUGHT FORWARD AT 1ST APRIL 2022		(133,812)	529,391	395,579	482,490
Prior Year Adjustments	7	-	-	-	-
TOTAL FUNDS AT 31ST MARCH 2023		(168,521)	490,278	321,757	395,579
RECONCILIATION OF FUNDS					
		Unrestricted Fund 31st March 2023 £	Restricted Fund 31st March 2023 £	Total Fund 31st March 2023 £	Total Fund 31st March 2022 £
Total Funds Brought Forward		(133,812)	529,391	395,579	482,490
Less : Prior Year Adjustments		-	-	-	-
Total net activity for the year		(34,709)	(39,113)	(73,822)	(86,911)
Total Funds Carried forward		(168,521)	490,278	321,757	395,579

The Statement of Financial Activities includes all gains and losses in the year and therefore a statement of total recognised gains and losses has not been prepared. All of the above amounts relate to continuing activities.

Smethwick Youth & Community Centre Limited
A Company Limited By Guarantee

Balance Sheet

Year Ended 31 March 2023

	Note	2023 £	2022 £
FIXED ASSETS			
Tangible Assets	7	34,810	102,794
CURRENT ASSETS			
Debtors & Prepayments	8	70,111	15,949
Cash at Bank & In Hand		<u>218,272</u>	<u>279,943</u>
		288,383	295,892
CREDITORS: Amounts due within one year	9	<u>(1,436)</u>	<u>(3,107)</u>
NET CURRENT ASSETS		286,947	292,785
CREDITORS: Amounts falling due after more than one year		-	-
NET ASSETS		<u><u>321,757</u></u>	<u><u>395,579</u></u>
FUNDED BY			
Accumulated Unrestricted Income funds	11	(168,521)	(133,812)
Accumulated Restricted Income funds	10	490,278	529,391
TOTAL		<u><u>321,757</u></u>	<u><u>395,579</u></u>

For the year ending 31 March 2023 the company was entitled to exemption from audit under section 477 of the companies Act 2006

The Trustees/Directors have not required the company to obtain an audit in accordance with section 476 of the companies Act 2006

The Trustees/Directors acknowledge their responsibility -

- for complying with the requirements to keep accounting records of Sections 386 and 387 of the Companies Act 2006
- with respect to accounting records and preparation of account, as to the surplus or deficit to give a true and fair view of the charitable financial status

Smethwick Youth & Community Centre Limited
A Company Limited By Guarantee

Balance Sheet

- of the state of affairs of the charitable company at the end of each financial year in accordance with the requirements of Sections 394 and 395 which otherwise comply with the requirements of the Companies Act 2006 relating to financial statements, so far as applicable to the charitable company

The accounts have been prepared in accordance with the provisions applicable to companies subject to the small companies regime and the Financial Reporting Standard for Smaller Entities, 2008.

These financial statements were approved and authorised for issue by the members of the committee on the 18/12/2023 and are signed on their behalf by :

x *BS Bhajam*

Balbir Singh Bhajam
(Treasurer)

Smethwick Youth & Community Centre Limited
A Company Limited By Guarantee

Notes To The Financial Statements

Year Ended 31 March 2023

1. ACCOUNTING POLICIES

Basis of Accounting

The financial statements have been prepared in accordance with the Financial Reporting Standard for Smaller Entities, effective April 2008, the Statement of Recommended Practice "Accounting and Reporting by Charities" issued in January 2019 (SORP JAN 2019) and the Companies Act 2006.

Cash flow statement

The directors of the charity have taken advantage of the exemption in Financial Reporting Standard No 1 (revised) from including a cash flow statement in the financial statements on the grounds that the Company is small.

Fixed assets

All fixed assets are initially recorded at cost

Depreciation

Depreciation is calculated so as to write off the cost of an asset, less its estimated residual value, over the useful economic life of that asset as follows

Office Equipment	- 20% on Reducing balance method.
Fixtures & Fittings	- 20% on Reducing balance method.
Leasehold Property	- 5% on cost
Improvements to property	- 5% on cost

Income recognition

Income is recognized when the charity is entitled to it, there is reasonable certainty that it will be received and it is measurable.

Expenditure and liabilities

Expenditure and the related liabilities are recognised at the point that there is an obligation on the charity to transfer economic benefits. Expenditure include any VAT which cannot be fully recorded, and is reported as part of the expenditure to which of relates to charitable and governance cost.

Apportionment of costs

Costs are applied on a fair basis to the various projects, keeping in mind that certain projects are based on delivery of outputs, therefore costs are allocated to the fund to reflect the fact that the outputs have been delivered.

Funds

Restricted funds are recognised when a donor specifies that the funds are to be spent for a particular purpose. All other funds are classified as unrestricted.

Smethwick Youth & Community Centre Limited
A Company Limited By Guarantee

Notes To The Financial Statements

2 VOLUNTARY INCOME

	Unrestricted Fund 31st March 2023 £	Restricted Fund 31st March 2023 £	Total Fund 31st March 2023 £	Total Fund 31st March 2022 £
Donations				
Miscellaneous	-	-	-	-
GNG Nursery Fees	138,619	-	138,619	136,885
Grants receivable				
BMET	-	-	-	-
Youth Interfaith Club	-	-	-	-
DWP	-	-	-	-
HPCL_Employments	-	-	-	-
Welfare	-	-	-	-
Worker Education	-	-	-	-
Consortium	88,279	-	88,279	84,533
RSA Insurance	-	-	-	-
Steps	-	-	-	-
NEF	-	-	-	-
ELT	-	31,192	31,192	16,263
Child care invest me	-	390	390	1,490
Booking	-	-	-	100
EYPP	-	-	-	-
STP	-	-	-	-
Core Cost	-	-	-	-
UK Online	-	-	-	-
Good Things Foundation	-	6,900	6,900	2,300
Prior period adjustment - NEF/ELT	-	0	0	-
HMRC JRS Grant	-	-	0	17,162
Covid Grant	-	-	0	16,000
SYCC HAF 2023 Easter Grant	2,172	-	2,172	15,263
EYSFF	-	92,865	92,865	96,442
Miscellaneous income	12,253	-	12,253	10,000
	241,323	131,347	372,670	396,438

3 INCOME OF CHARITABLE ACTIVITIES BY FUND TYPE

	Unrestricted Fund 31st March 2023 £	Restricted Fund 31st March 2023 £	Total Fund 31st March 2023 £	Total Fund 31st March 2022 £
Donations/Collections	-	-	-	136,885
GNG Nursery Fees	138,619	-	138,619	-
Employment	-	-	-	-
Adult Education	-	-	-	-
Child Education	-	31,192	31,192	16,263
Child care invest me	-	390	390	1,490
Youth	-	-	-	-
Health	-	-	-	-
Consortium	88,279	-	88,279	84,533
Booking	-	-	-	100
Prior period adjustment - NEF/ELT	-	-	-	-

Smethwick Youth & Community Centre Limited
A Company Limited By Guarantee

Notes To The Financial Statements

HMRC JRS Grant	-	-	17,162
Good Things Foundation	6,900	6,900	2,300
COVID GRANT	-	-	16,000
SYCC HAF 2023 Easter Grant	2,172	2,172	15,263
EYSFF	92,865	92,865	96,442
Miscellaneous income	12,253	12,253	10,000
	241,323	131,347	396,438

Smethwick Youth & Community Centre Limited
A Company Limited By Guarantee

Notes To The Financial Statements

4 GOVERNANCE & CHARITABLE COST

	Unrestricted Funds 2023 £	Restricted Funds 2023 £	Total 31st March 2023 £	Total 31st March 2022 £
Wages & Salaries	185,797	79,627	265,424	287,797
Staff pension costs	2,855	1,224	4,079	4,439
Staff training	304	150	454	1,215
Rent & Rates	58	3,294	3,352	2,305
Insurances	-	3,647	3,647	4,462
Light & Heat	-	7,574	7,574	8,036
Cleaning & Toiletries	3,598	1,473	5,071	7,209
Repairs & Renewals	1,078	906	1,984	4,183
Printing, Postage & Stationery	-	10,709	10,709	10,647
Advertising & Promotion	-	-	-	-
Telephone	-	7,675	7,675	6,413
Community Engagement Activities	-	159	159	159
Bad debts	185	-	185	-
Tuition Fees	-	-	-	-
Professional Charges	1,199	41,149	42,348	41,578
Accountancy Fees	-	3,036	3,036	3,036
Audit fees	-	2,304	2,304	2,304
Bank interest & Charges	-	103	103	270
Sundries	4,198	5,759	9,957	12,631
Donations	-	-	-	4,250
Subscription	717	621	1,338	2,193
GNG Nursery expenses	5,627	1,050	6,677	9,385
Depreciation	70,416	-	70,416	70,837
	276,032	170,460	446,492	483,349

5 NET RESOURCES EXPENDED FOR THE YEAR

This is stated after charging:	2023 £	2022 £
Depreciation	70,416	70,837
Auditor's remuneration: - audit of the financial statements	2,304	2,304
	72,720	73,141

Smethwick Youth & Community Centre Limited
A Company Limited By Guarantee
Notes To The Financial Statements

6 STAFF COSTS AND EMOLUMENTS

Total staff costs were as follows:

	2023	2022
	£	£
Wages and salaries	254,543	275,916
Social security costs	10,881	11,881
	<u>265,424</u>	<u>287,797</u>

Particulars of employees:

The average number of employees during the year, calculated on the basis of full-time equivalents, was as follows:

	2023	2022
	No	No
Project manager	1	1
Finance officer	1	1
Fundraising	1	1
Charitable activities	18	18
Administration and support	1	1
	<u>22</u>	<u>22</u>

No employee received emoluments of more than £60,000 during the year Nil (2022 - Nil).

The trustees received no remuneration or expenses, either directly or indirectly from the charity.

Smethwick Youth & Community Centre Limited
A Company Limited By Guarantee

Notes To The Financial Statements

Year Ended 31 March 2023

7 TANGIBLE FIXED ASSETS

COST	Improvements to property £	Equipment £	Fixtures & Fittings £	Leasehold Property £	Total £
1st April 2022	122,616	53,218	160,119	1,224,713	1,560,666
Additions	-	-	2,432	-	2,432
As at 31st March 2023	122,616	53,218	162,551	1,224,713	1,563,098
DEPRECIATION					
1st April 2022	94,940	49,351	150,102	1,163,479	1,457,872
Charge for the year	6,130	773	2,280	61,233	70,416
As at 31st March 2023	101,070	50,124	152,382	1,224,712	1,528,288
Net Book Value					
1st April 2022	27,676	3,867	10,017	61,234	102,794
1st April 2023	21,546	3,094	10,169	1	34,810

The leasehold property comprises land and buildings. The land was leased from Guru Nanak Gurdwara (GNG) Smethwick, for a term of ten years until 5th April 2013. No depreciation was charged until 31 March 2013, on the grounds that the lease would be renewed for the foreseeable future. The trustees now feel that it is more prudent to depreciate the property, and this has been charged on the basis that the original lease was intended to run for twenty years. Thus the property is now shown Fully depreciated.

The trustees had and will continue to allow Smethwick Youth & Community Centre to use the premises for charitable purpose for foreseeable future until being informed otherwise.

Smethwick Youth & Community Centre Limited
A Company Limited By Guarantee

Notes To The Financial Statements

Year Ended 31 March 2023

8 DEBTORS

	2023	2022
	£	£
Trade debtors	13,115	13,115
Sandwell Metropolitan Borough Council	-	8
Furlough Grant	-	-
Prepayments	1,996	2,649
Other debtors (Lyreco)	-	77
Other debtors (Midshire Communications Limited)	-	100
Gurunanak Gurudwara Loan	40,000	-
Utility Prepayment	15,000	-
	<u>70,111</u>	<u>15,949</u>

9 CREDITORS: Amounts falling due within one year

	2023	2022
	£	£
Trade creditors	-	-
Taxation and social security	570	2,329
Other creditors	-	-
Accrued expense	-	-
Pension contributions	866	778
	<u>1,436</u>	<u>3,107</u>

Smethwick Youth & Community Centre Limited
A Company Limited By Guarantee

Notes To The Financial Statements

Year Ended 31 March 2023

10 ACCUMULATED RESTRICTED INCOME FUNDS

	Notes	Bal b/fd 1st April 2022	Income Resources	Outgoing Resources	Balance at 31st March 2023
Restricted Funds:					
SYCC Building works		(967,414)		170,460	(1,137,874)
Core		4,500			4,500
UK Online		215,403	-		215,403
Child care invest me		37,412	390		37,802
Youth Interfaith Club		6,900			6,900
Steps		62,965	-		62,965
PAYP		9,576			9,576
Baron		800			800
Edwards		1,000			1,000
DWP		13,520			13,520
HPCL_Employments		12,000			12,000
GNG Welfare		24,000			24,000
Worker Education		1,490			1,490
Midshire		3,581			3,581
NEF		633,048	-		633,048
ELT		297,499	31,192		328,691
Sports		7,715			7,715
Good Things Foundation		20,175	6,900		27,075
EYSFF		162,344	92,865		255,209
Prior period adjustment - NEF/ELT		(17,124)	0		(17,124)
Total Restricted Funds		529,391	131,347	170,460	490,278

11 ACCUMULATED UNRESTRICTED INCOME FUNDS

	Bal b/fd 1st April 2022	Income Resources	Outgoing Resources	Balance at 31st March 2023
SRB4	798			798
SRB6	(17,289)			(17,289)
SRB6 e	10,750			10,750
IAG	44,514			44,514
AXA	(1,580)			(1,580)
HMRC online filing income	250			250
Childrens Fund	153			153
Dudley College	91,911			91,911
South Birmingham College	7,250			7,250
Other Unrestricted Income	20,204	-		20,204
SYCC Income	2,699			2,699
Private Tuton	3,124			3,124

Smethwick Youth & Community Centre Limited
A Company Limited By Guarantee

Notes To The Financial Statements

Year Ended 31 March 2023

IDS-Donation	6,688			6,688
GNG Income - Nursery	(1,293,184)	138,619	276,032	(1,430,597)
Birmingham Chamber of Commerce	1,425			1,425
C & C	13,599			13,599
Computer	405			405
Room Hire	2,442			2,442
IFA	4,975			4,975
Donation	4,915			4,915
Citizen	3,139			3,139
DAF2 Training	10,873			10,873
Digital	2,000			2,000
BuddyUp	18,000			18,000
NLDC2	3,764			3,764
NLDC3	5,647			5,647
Sandwell College	17,302			17,302
WNF3	189,560			189,560
WNF_R&D	13,500			13,500
WNF4_ESOL_Phase1	4,014			4,014
WNF4_ESOL_Phase2	12,124			12,124
PAYP	7,542			7,542
Calibre	1,076			1,076
SFVYO	1,500			1,500
WNF_EMP	8,746			8,746
Big Lottery - Advice Services Fund	57,500			57,500
BMET	3,440			3,440
Consortium	430,787	88,279		519,066
SCOLL	2,400			2,400
STP	4,667			4,667
Booking	650	-		650
HMRC JRS Grant	76,395	-		76,395
Covid Grant	62,249	0		62,249
The Winston Churchill Fellowship	10,000	12,253		22,253
Vision Grant-SCVO	15,263	2,172		17,435
Total Unrestricted Funds	(133,812)	241,323	276,032	(168,521)
Total Funds	395,579	372,670	446,492	321,757

12 COMPANY LIMITED BY GUARANTEE -

Smethwick Youth & Community Centre is a company limited by guarantee and accordingly does not have a share capital.

Smethwick Youth & Community Centre Limited
A Company Limited By Guarantee

Notes To The Financial Statements

Year Ended 31 March 2023

Every member of the company undertakes to contribute such amount as may be required not exceeding £1 to the assets of the charitable company in the event of its being wound up while he or she is a member, or within one year after he or she ceases to be a member.

13 RELATED PARTIES

As disclosed in the Trustees' Report, Guru Nanak Gurdwara (GNG) Smethwick, a registered charity, is the main related party, as a set number of trustees of the charity are required to be selected from the GNG committee. The charity leases land from GNG, as disclosed in the note on fixed assets. The terms of the lease include a peppercorn rent. No rent was paid during the period. An amount of £5,000 (2022: £5,000) was contributed by SYCC to the share of Utilities. SYCC also made a prepayment of £15,000.00 for future Utility Costs. SYCC has also loaned GNG an amount of £40,000.