

Company Registration Number 04201736

Smethwick Youth & Community Centre Limited
A Company Limited by Guarantee
Financial Statements
31 March 2021

Charity Number 1090529

Smethwick Youth & Community Centre Limited
A Company Limited by Guarantee

Financial Statements

Year Ended 31 March 2021

CONTENTS	PAGE
Report of the directors/trustees of the charity	1-10
Independent Examiner's Report	11-12
Statement of Financial Activities (incorporating the Income and expenditure account)	13
Balance sheet	14-15
Notes to the financial statements	16-24

Smethwick Youth & Community Centre Limited
A Company Limited by Guarantee

Report of The Directors/Trustees of The Charity
Year Ended 31 March 2021

The directors of the charity, who are also directors for the purposes of company law, have pleasure in presenting their report and the financial statements of the charity for the year ended 31 March 2021.

Reference and Administrative Details

Registered charity name : Smethwick Youth & Community Centre Limited

Charity registration number : 1090529

Company registration number : 04201736

**Registered office and
Operational address** : Trinity Point
1 Trinity Street
Smethwick
West Midlands
B67 7AA

The Directors of the Charity :

The directors of the charity who served the Company during the year were as follows:

Humraaj Singh Shergill (Chairperson)
Bhervinder Singh (Vice-Chairperson)
Randeep Singh Basra (Treasurer)
Jatinder Singh Basi (Director)
Amarjit Singh Mann (Director)
Balbir Singh Bhajam (Director)
Parbinder Kaur (Director)
Gurpal Singh (Director)
Harjinder Singh Malhi (Director)

Secretary : Harjinder Singh Malhi

Other co-opted members : Chuhar Singh Dhariwal

Auditors : DAS, Chartered Accountants
6th Floor AMP House
Dingwall Road
Croydon
CR0 2LX

Bankers : Barclays Bank Plc
Leicester
LE87 2BB

Smethwick Youth & Community Centre Limited

A Company Limited by Guarantee

Report of The Directors of The Charity (*Continued*)

Year Ended 31 March 2021

Structure, Governance and Management

Governing Document

The organisation is a charitable company limited by guarantee, incorporated on 19 April 2001 and registered as a charity on 11 February 2002. The company was established under a Memorandum of Association which established the objects and powers of the charitable company and is governed under its Articles of Association. In the event of the company being wound up members are required to contribute an amount not exceeding £1.

Recruitment and Appointment of the Directors of the Charity

The directors of the company are also charity trustees for the purposes of charity law and under the company's Articles are known as directors of the charity. Under the requirements of the Memorandum and Articles of Association, there must be a minimum of nine trustees. The trustees must consist of not less than five representatives from the management committee of the Guru Nanak Gurdwara, High Street, Smethwick and not less than four members of the charity, elected at the annual general meeting, three of whom shall be young people representatives (at least 1 being female and 1 between the age of 18 and 25) and one elderly user. One third of the longest serving trustees are subject to retirement by rotation at the annual general meeting.

Some of the trustees are expected to retire at the next Annual General Meeting by Rotation and offer themselves for re-election.

New trustees will be appointed, if the number of remaining trustees is less than the required minimum under the Articles of Association.

Public Benefit

We have referred to the guidance in the Charity Commission's general guidance on public benefit when reviewing our aims and objectives and in planning our future activities. In particular the trustees consider how planned activities will contribute to the aims and objectives they have set.

Risk Management

The trustees confirm that the major risks to which the charity is exposed have been reviewed and systems have been established to minimise those risks. The trustees have implemented a risk management strategy which comprise:

- an annual review of the risks which charity may face
- establishment of systems and procedures to mitigate those risk identified in the plan and -the implementation of procedures designed to minimise any potential impact on the charity

Smethwick Youth & Community Centre Limited

A Company Limited by Guarantee

Report of The Directors of The Charity (*Continued*)

Year Ended 31 March 2021

Organisational Structure

The centre has nine trustees who meet quarterly to consider the strategic direction and performance of the charity. The trustees work under the stewardship of Humraaj Singh Shergill as Chairperson to ensure the charity maintains its strategic direction and is managed in a professional manner.

The management team present the trustees at the meeting with strategic planning reports, such as financial reviews, project feedback reports, schedule of planned activities for the future and any other issues which require the attention of the trustees.

Related Parties

The charity has been set up under the leadership of Guru Nanak Gurdwara (GNG) High Street, Smethwick with particular emphasis on serving and supporting the whole community of Sandwell and Smethwick. It is a requirement of the Articles of Association that trustees' positions are reserved for the President and the General Secretary and three other members of the management committee of the GNG. There is no doubt that the charity benefits immensely from the inspirational support and voluntary leadership provided by the members of the GNG.

SYCC Mission, Vision and Aims & Objectives

Mission Statement

To develop a multi-agency and cross sector resource centre particularly for the Sikh-Punjabi community in Smethwick

That provides a one-stop solution to

- **REDUCE** social deprivation & exclusion, low levels of skills, social isolation, crime and drug misuse,
- **RAISE** educational standards;
- **IMPROVE** health, employment opportunities, household incomes and,
- **SUPPORT** SME business regeneration and diversification pathways leading to vibrant community regeneration and strengthening of the local neighbourhood

SYCC's Vision

Incorporate a holistic approach to a multiagency facility in the heart of Smethwick Town Centre (High Street) that will enable it to deliver services and provide access to resources across communities and across disciplines

Bridge the skills divide between the local communities and provide a supporting pathway that develops user confidence and promotes access of mainstream provision.

SYCC'S Aims & Objectives

SYCC's mission as explained above is to foster and support the development of individuals, groups and organisations within the Sikh Punjabi community, in particular, tenants living in or around Smethwick Whilst it will provide its services for all local people and has an open door, non-judgemental policy, it will have as its ultimate aim to address the needs of the Sikh Punjabi community

This community is an ethnic group that has often been left behind in terms of employment and educational opportunities, affordable quality housing, access to health and social services, as well as a lack of specific voluntary support structures, strategic- representation and political influence.

Smethwick Youth & Community Centre Limited

A Company Limited by Guarantee

Report of The Directors of The Charity (*Continued*)

Year Ended 31 March 2021

SYCC's aim is to redress this balance through providing one-stop services for the target community to access work, education, health, housing and services locally. Its capacity and scope have been widened through strong support and partnerships locally.

Key Achievements:

SYCC's main achievement recently has been its battle through the Covid-19 pandemic; having had to change its entire operation. We changed our nursery operation to ensure the safety of children and parents having had to restrict parental access to the building, take temperature checks, regular hand washing, additional cleaning and re-writing our policies and procedures. As with our projects we have had to work through limiting access, safety distanced activity, temperature checks and instigating safety measures, such as safety screens. Although all of this has come at a cost, the staff and clients have all worked together and a positive service has been maintained with minimal disruption.

SYCC Nursery:

Children on Roll:

Over 50 children presently on roll at GNG Nursery

Children who have moved on to school:

31 Children left GNG Nursery in July 2021 to attend Nursery school / Reception class

Staff Members:

18 staff members in total

Parental Engagement :

- Nursery has created a parent engagement group involving parents from each room to provide feedback and suggestions
- Health and well-being sessions for staff and parents started w.c 20.09.2021. Very good feedback given from parents who attended sessions
- One of our parents has started yoga sessions with children once a month
- 2 – 5 year olds have incorporated meditation and yoga into their daily routine
- Food donations by parents for Harvest to go towards the local church
- Children have been visiting environments within the local community, the allotments, the Gurdwara, lions of the great war statue and the church (This promotes British Values and Cultural capital)

SYCC Projects

As regards to project activities in the past year SYCC has achieved the following:

HHealth

SYCC has engaged with over 250 adults and young people on its Health activities this year.

SYCC provides Yoga classes on Tuesday's and Thursday's to over 60 people annually.

SYCC runs Healthy Walking Sessions on Friday's for its users. This is attended by 40 people annually.

SYCC has delivered Healthy Cooking sessions to over 60 people.

SYCC has engaged with 75 young people in football activities in West Smethwick Park and Harry Mitchell Leisure Centre.

Smethwick Youth & Community Centre Limited
A Company Limited by Guarantee

Report of The Directors of The Charity (*Continued*)
Year Ended 31 March 2021

Employment

SYCC has provided Employment support for over 200 people. Each client receiving a CV and job search support.

SYCC delivered basic ICT training through the UK Online project to over 150 people.

Learning

SYCC delivered informal language classes to over 40 people

Through our Youth funding (11 to 19 years old) we have assisted over 50 young people.

SYCC has provided accredited first aid training to 20 young people.

We have delivered Basic Food & Hygiene Level 2 to 10 adults.

Poverty Reduction

The total number of Welfare and Benefits advice sessions throughout the year was over 1550. The total number of claims made on behalf of the clients was over 80.

We have participated in a food donation scheme where individuals have been able to pickup fruit and vegetables from our centre to support them through the pandemic.

SYCC supported 80 individuals with getting online and completing their Council Tax Reduction Scheme application.

SYCC supported 50 individuals with their Universal Credit applications.

Smethwick Youth & Community Centre Limited
A Company Limited by Guarantee

Report of The Directors of The Charity (*Continued*)
Year Ended 31 March 2021

FINANCIAL REVIEW

Transactions and Financial Position

A summary statement of financial activities for the year is shown on page 13 of the accounts. This shows that during the year, total income of £373,937 was received and after expenditure a net deficit of £19,247 was debited to reserves. The deficit includes a charge of £61,236 which represents current 12 months of depreciation on the leasehold property. The trustees have changed the accounting policy on depreciation as it is felt this is more likely to give a true and fair view.

Reserves policy and funds in deficit

It is the policy of the trustees to maintain six months' running costs. The reserves at 31 March 2021 totaled £482,490, however cash held only amounted to £289,235.

There are a number of funds in deficit, including the building works fund and nursery fund. The trustees are in the process of reviewing and rationalizing the funds.

Principal Funding Resources

The principal funding resources during the year were GNG Welfare Fees, Baron, Edwards, DWP, HPCL_Employments, Worker education, Consortium, Midshire, Steps, NEF, ELT, Booking, PAYP, STP, UK Online and Sports.

Investment Policy and Returns

Under the memorandum articles of association, the charity has the power to make any investment, which the trustees see fit.

The investment policy has been to choose the best deposit account available that will give high interest for the organisation and also to choose the most flexible current account for efficiency in daily transactions.

It is the policy of the trustees to maintain six months running costs sufficient to ensure that continued operation of the charitable company's activities. The organisation wishes to maintain sufficient cash flow for known commitments.

SYCC Strategic Direction

Performance – Even in this difficult economic climate, SYCC will continue to maintain its high level of performance and quality of its service delivery.

Productivity – SYCC will become more productive by creating efficiencies internally and through the use of engagement tools such as social media and better use of technology including management information systems.

Processes – Through reviewing all processes SYCC will maintain its level of quality delivery, this will ensure SYCC retain the MATRIX quality standard.

People – The essence of SYCC is our people, those being staff and the clients. We will strive to invest in our people; at a strategic level this includes investment in senior management and training for trustees. At an operational this involves equipping staff with the tools to meet their full potential.

Smethwick Youth & Community Centre Limited
A Company Limited by Guarantee

Report of The Directors of The Charity (*Continued*)
Year Ended 31 March 2021

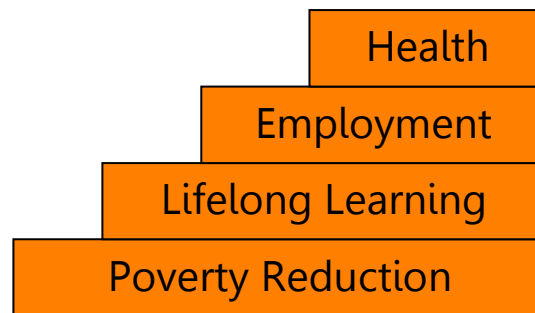
Participation – SYCC will strategically align itself with the governments Localism agenda, focusing on encouraging active participation with local members of the community.

SYCC are Here to HELP:

SYCC is now working under a new core strategy.

- **Health** (i.e. gym packages, sports)
- **Employment** (i.e. employment packages i.e. creating CV's)
- **Lifelong Learning** (i.e. tuition; literacy, youth services)
- **Poverty Reduction** (i.e. welfare advice)

We will support people on their steps to success:



SYCC are here to “HELP”

SYCC aim to “**HELP**” the local community through their strategy which provides support in the following areas: “**H**Health”, “**E**mployability”, “**L**earning” and “**P**overty reduction”.

Health: SYCC provide Health facilities suitable for people of all ages and backgrounds by providing the following activities:

- Yoga for women
- Exercise machines on a drop-in basis
- Weightlifting
- Football sessions
- Karate sessions
- Community Walks
- Healthy cooking

The provide health services aimed at the local community to reduce health risks. Furthermore, SYCC wish to tackle common dangers including depression and stress. With many in the area working long hours therefore struggling to find time to exercise, SYCC will “HELP” through providing a combination of everyday healthy living. This includes physical exercise through cardio workouts and valuable knowledge through healthy cooking.

Smethwick Youth & Community Centre Limited
A Company Limited by Guarantee

-
Report of The Directors of The Charity (*Continued*)
Year Ended 31 March 2021

Employability:

- CV's
- Job search
- Basic Computing through UKOnline Centres

Employability opportunities received through SYCC enables clients to enhance their employability chances. We create unemployed clients a CV which will allow them to apply to jobs; providing a steady income and reducing poverty. Moreover, the centre provides support on searching and applying for jobs online.

Learning:

- English classes
- Basic Computing
- Youth Club
- Nursery

Gaining a higher level of education will allow the individual to become more employable as they have extended their skills and knowledge. More career opportunities will be available. Furthermore, adults can help their children with homework which they perhaps cannot provide support for at the moment. The Youth Club provides afterschool activities which encourages the young individuals to interact with one-another and socialise. Many of these young people may not be able to socialise with each other at school in this way. The basic computing provides both learning and enhancing employability; as many jobs require I.T. skills. Finally, with SYCC's new nursery opening, we wish to provide young children with the right steps in their learning pathway. We hope to provide them with opportunities that they may not receive elsewhere. With the high waiting lists in the area to get a child into a nursery, we feel that this opportunity will reduce the wait and raise the chances of a child starting within the applicable year.

Poverty Reduction:

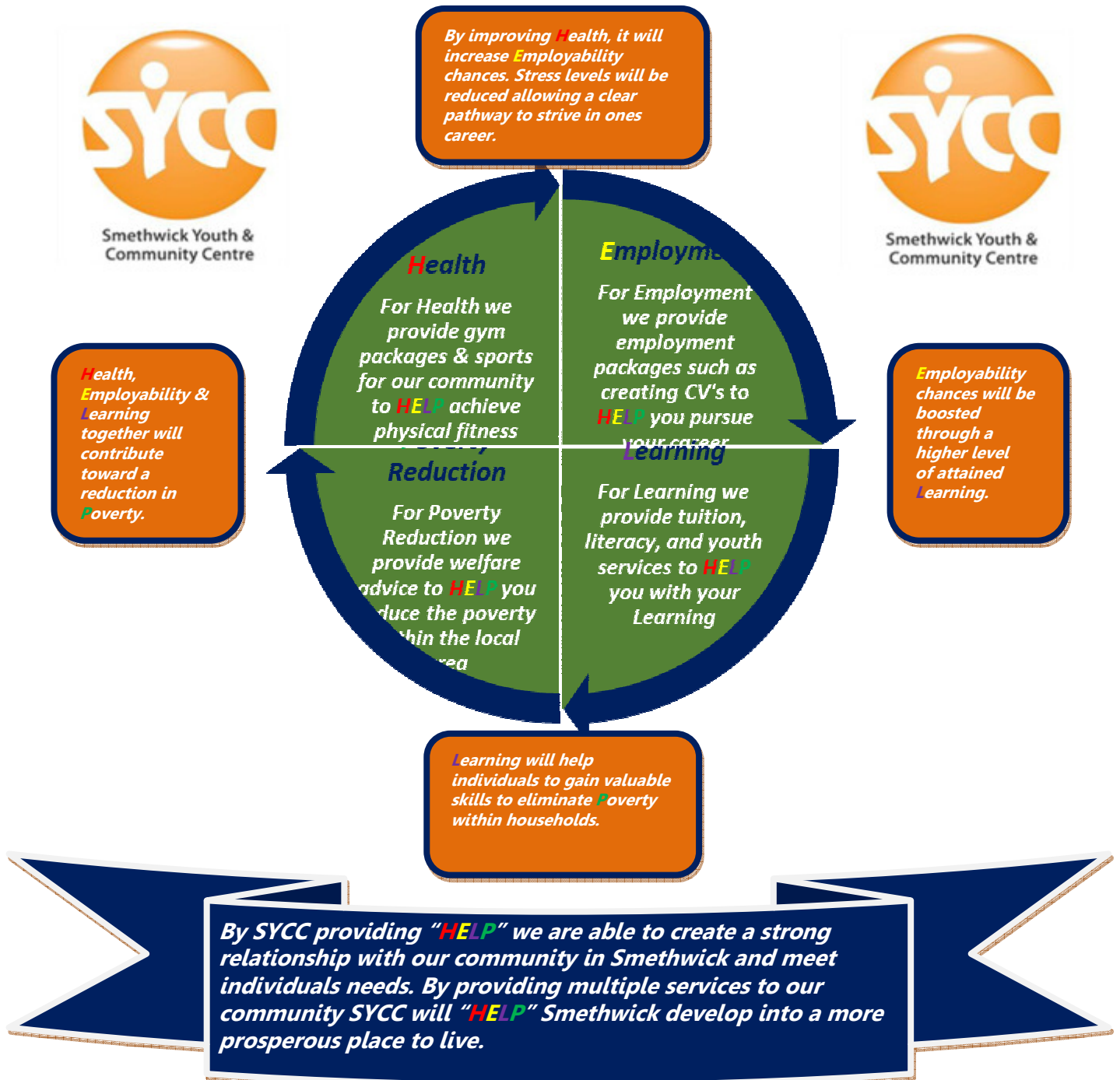
Over 30% of Sandwell's 309,000 populations live in relative poverty. This includes 32% of children under 18 and increasing numbers of children and adults with health and disability needs. Our welfare advisor provides assistance with welfare problems which people living in the local community face within their life.

Together with the combination of **Health**, **Employability** & **Learning** – SYCC will contribute towards **Poverty Reduction** within the local area.

Smethwick Youth & Community Centre Limited
A Company Limited by Guarantee

Report of The Directors of The Charity (Continued)
Year Ended 31 March 2021

Linkages within the "HELP" strategy



With improved Health, one can strive to become employed and reach their personal and career goals. It will help them to manage their time and reduce stress and depression. Physical exercise will clear their mind and stop them from sinking into an unhealthy lifestyle. The new skills and knowledge obtained from learning will contribute toward employability; as one will be able to use what they have learnt in practise. Employability opportunities provided by SYCC will aim for the individual to work toward a higher income, supporting themselves and their family. With the combination of health, employability, learning, and the welfare advice given from SYCC, it will work towards poverty reduction.

Smethwick Youth & Community Centre Limited
A Company Limited by Guarantee

Report of The Directors of The Charity (*Continued*)
Year Ended 31 March 2021

Responsibilities of The Directors of The Charity

The directors of the charity are responsible for preparing the Report of the directors of the charity and the financial statements in accordance with applicable law and United Kingdom Generally Accepted Accounting Practice.

Company law requires the directors of the charity to prepare financial statements for each financial year which give a true and fair view of the state of affairs of the charity and of the surplus or deficit of the charity for that period.

In preparing these financial statements, the directors of the charity are required to:

- select suitable accounting policies and then apply them consistently,
- make judgements and estimates that are reasonable and prudent; and
- prepare the financial statements on the going concern basis unless it is inappropriate to presume that the charity will continue in operation.

The directors of the charity are responsible for keeping proper accounting records which disclose with reasonable accuracy at any time the financial position of the charity and which enable them to ensure that the financial statements comply with Companies Act 2006. The directors of the charity are also responsible for safeguarding the assets of the charity and hence for taking reasonable steps for the prevention and detection of fraud and other irregularities

In so far as the directors of the charity are aware

- there is no relevant audit information of which the charity's auditors are unaware, and
- the directors of the charity have taken all steps that they ought to have taken to make themselves aware of any relevant audit information and to establish that the auditors are aware of that information.

This report has been prepared having taken advantage of the small companies' exemption in the Companies Act 2006.

Signed on behalf of the directors of the charity-

x

Humraaj Singh Shergill (Chairperson).

Date:

Smethwick Youth & Community Centre Limited
A Company Limited by Guarantee

Independent Examiner's Report to the members of Smethwick Youth & Community Centre Limited.

Year Ended 31 March 2021

I report on the accounts of the charity for the year ended 31 March 2021 which are set out on pages 13 to 24.

Respective responsibilities of trustees and examiner

The charity's trustees are responsible for the preparation of the accounts. The charity's trustees consider that an audit is not required for this year under section 144(2) of the Charities Act 2011 (the 2011 Act) and that an independent examination is needed. It is my responsibility to:

- examine the accounts under section 145 of the 2011 Act;
- follow the procedures laid down in the general Directions given by the Charity Commission under section 145(5)(b) of the 2011 Act; and
- state whether particular matters have come to my attention.

Basis of independent examiner's report

My examination was carried out in accordance with the general Directions given by the Charity Commission. An examination includes a review of the accounting records kept by the charity and a comparison of the accounts presented with those records. It also includes consideration of any unusual items or disclosures in the accounts, and seeking explanations from you as trustees concerning any such matters. The procedures undertaken do not provide all the evidence that would be required in an audit and consequently no opinion is given as to whether the accounts present a "true and fair view" and the report is limited to those matters set out in the statement below.

Independent examiner's statement

In connection with my examination, no matter has come to my attention:

- 1 which gives me reasonable cause to believe that, in any material respect, the requirements:
 - to keep accounting records in accordance with section 130 of the 2011 Act; and
 - to prepare accounts which accord with the accounting records and comply with the accounting requirements of the 2011 Act and with the methods and principles of the statement of recommended practice; accounting and reporting by charities have not been met; or

Smethwick Youth & Community Centre Limited
A Company Limited by Guarantee

**Independent Examiner's Report to the members of Smethwick Youth &
Community Centre Limited.**

Year Ended 31 March 2021

- 2 to which, in my opinion, attention should be drawn in order to enable a proper understanding of the accounts to be reached.

X

.....

DAS, Chartered Accountants
6th Floor AMP House
Dingwall Road
Croydon
CR0 2LX

Date:

Smethwick Youth & Community Centre Limited
A Company Limited By Guarantee

**Statement Of Financial Activities (Incorporating
The Income and Expenditure Account)**

Year Ended 31 March 2021

		Unrestricted Fund 31st March 2021 £	Restricted Fund 31st March 2021 £	Total Fund 31st March 2021 £	Total Fund 31st March 2020 £
	Note				
INCOMING RESOURCES					
Incoming resources from generated funds :					
Voluntary income	2	171,418	125,255	296,673	296,127
Activities for generating funds		77,264	-	77,264	197,069
TOTAL INCOMING RESOURCES		248,682	125,255	373,937	493,196
RESOURCES EXPENDED					
Charitable Activities and Governance Cost	4	(245,523)	(147,659)	(393,184)	(533,799)
TOTAL RESOURCES EXPENDED		(245,523)	(147,659)	(393,184)	(533,799)
NET RESOURCES EXPENDED		3,159	(22,404)	(19,247)	(40,603)
TOTAL FUNDS BROUGHT FORWARD AT 1ST APRIL 2020		(114,511)	616,248	501,736	542,340
Prior Year Adjustments	7	-	-	-	-
TOTAL FUNDS AT 31ST MARCH 2021		(111,352)	593,844	482,490	501,737
RECONCILIATION OF FUNDS					
		Unrestricted Fund 31st March 2021 £	Restricted Fund 31st March 2021 £	Total Fund 31st March 2021 £	Total Fund 31st March 2020 £
Total Funds Brought Forward		(114,511)	616,248	501,736	542,340
Less : Prior Year Adjustments		-	-	-	-
Total net activity for the year		3,159	(22,404)	(19,247)	(40,603)
Total Funds Carried forward		(111,352)	593,844	482,490	501,737

The Statement of Financial Activities includes all gains and losses in the year and therefore a statement of total recognised gains and losses has not been prepared. All of the above amounts relate to continuing activities.

Smethwick Youth & Community Centre Limited
A Company Limited By Guarantee

Balance Sheet

Year Ended 31 March 2021

	Note	2021 £	2020 £
FIXED ASSETS			
Tangible Assets	7	173,631	245,335
CURRENT ASSETS			
Debtors & Prepayments	8	22,549	33,621
Cash at Bank & In Hand		289,235	225,344
		<u>311,784</u>	<u>258,965</u>
CREDITORS: Amounts due within one year	9	<u>(2,925)</u>	<u>(2,563)</u>
NET CURRENT ASSETS		308,859	256,402
CREDITORS: Amounts falling due after more than one year		-	-
NET ASSETS		<u><u>482,490</u></u>	<u><u>501,737</u></u>
FUNDED BY			
Accumulated Unrestricted Income funds	11	(111,353)	(114,511)
Accumulated Restricted Income funds	10	593,843	616,248
TOTAL		<u><u>482,490</u></u>	<u><u>501,737</u></u>

For the year ending 31 March 2021 the company was entitled to exemption from audit under section 477 of the companies Act 2006

The Trustees/Directors have not required the company to obtain an audit in accordance with section 476 of the companies Act 2006

The Trustees/Directors acknowledge their responsibility -

- for complying with the requirements to keep accounting records of Sections 386 and 387 of the Companies Act 2006
- with respect to accounting records and preparation of account, as to the surplus or deficit to give a true and fair view of the charitable financial status

Smethwick Youth & Community Centre Limited
A Company Limited By Guarantee

Balance Sheet

- of the state of affairs of the charitable company at the end of each financial year in accordance with the requirements of Sections 394 and 395 which otherwise comply with the requirements of the Companies Act 2006 relating to financial statements, so far as applicable to the charitable company

The accounts have been prepared in accordance with the provisions applicable to companies subject to the small companies regime and the Financial Reporting Standard for Smaller Entities, 2008.

These financial statements were approved and authorised for issue by the members of the committee on the and are signed on their behalf by :

x

.....
Humraaj Singh Shergill
(Chairperson)

Smethwick Youth & Community Centre Limited
A Company Limited By Guarantee

Notes To The Financial Statements

Year Ended 31 March 2021

1. ACCOUNTING POLICIES

Basis of Accounting

The financial statements have been prepared in accordance with the Financial Reporting Standard for Smaller Entities, effective April 2008, the Statement of Recommended Practice "Accounting and Reporting by Charities" issued in March 2005 (SORP 2005) and the Companies Act 2006.

Cash flow statement

The directors of the charity have taken advantage of the exemption in Financial Reporting Standard No 1 (revised) from including a cash flow statement in the financial statements on the grounds that the Company is small.

Fixed assets

All fixed assets are initially recorded at cost

Depreciation

Depreciation is calculated so as to write off the cost of an asset, less its estimated residual value, over the useful economic life of that asset as follows

Office Equipment	- 20% on Reducing balance method.
Fixtures & Fittings	- 20% on Reducing balance method.
Leasehold Property	- 5% on cost
Improvements to property	- 5% on cost

Income recognition

Income is recognized when the charity is entitled to it, there is reasonable certainty that it will be received and it is measurable.

Expenditure and liabilities

Expenditure and the related liabilities are recognised at the point that there is an obligation on the charity to transfer economic benefits. Expenditure include any VAT which cannot be fully recorded, and is reported as part of the expenditure to which of relates to charitable and governance cost.

Apportionment of costs

Costs are applied on a fair basis to the various projects, keeping in mind that certain projects are based on delivery of outputs, therefore costs are allocated to the fund to reflect the fact that the outputs have been delivered.

Funds

Restricted funds are recognised when a donor specifies that the funds are to be spent for a particular purpose. All other funds are classified as unrestricted.

Smethwick Youth & Community Centre Limited
A Company Limited By Guarantee

Notes To The Financial Statements

2 VOLUNTARY INCOME	Unrestricted Fund 31st March 2021 £	Restricted Fund 31st March 2021 £	Total Fund 31st March 2021 £	Total Fund 31st March 2020 £
Donations				
Miscellaneous	-	-	-	-
GNG Nursery Fees	77,264	-	77,264	197,069
Grants receivable				
BMET	-	-	-	-
Youth Interfaith Club	-	-	-	-
DWP	-	-	-	-
HPCL_Employments	-	-	-	-
Welfare	-	-	-	593
Worker Education	-	-	-	-
Consortium	65,936	-	65,936	95,003
RSA Insurance	-	-	-	-
Steps	-	-	-	-
NEF	-	39,204	39,204	145,496
ELT	-	19,398	19,398	5,325
Child care invest me	-	-	-	-
Booking	-	-	-	-
EYPP	-	-	-	-
STP	-	-	-	-
Core Cost	-	-	-	-
UK Online	-	-	-	49,710
Good Things Foundation	-	17,875	17,875	-
Prior period adjustment - NEF/ELT	-	(17,124)	(17,124)	-
HMRC JRS Grant	59,233	-	59,233	-
Covid Grant	46,249	-	46,249	-
EYSFF	-	65,902	65,902	-
	248,682	125,255	373,937	493,197

3 INCOME OF CHARITABLE ACTIVITIES BY FUND TYPE

	Unrestricted Fund 31st March 2021 £	Restricted Fund 31st March 2021 £	Total Fund 31st March 2021 £	Total Fund 31st March 2020 £
Donations/Collections	-	-	-	-
GNG Nursery Fees	77,264	-	77,264	197,069
Employment	-	-	-	-
Adult Education	-	-	-	-
Child Education	-	58,602	58,602	150,821
Youth	-	-	-	-
Health	-	-	-	49,710
Consortium	65,936	-	65,936	95,596
Prior period adjustment - NEF/ELT	-	(17,124)	(17,124)	-
HMRC JRS Grant	59,233	-	59,233	-
COVID GRANT	46,249	-	46,249	-
EYSFF	-	65,902	65,902	-
	248,682	107,380	356,062	493,196

Smethwick Youth & Community Centre Limited
A Company Limited By Guarantee
Notes To The Financial Statements

4 GOVERNANCE & CHARITABLE COST

	Unrestricted Funds 2021 £	Restricted Funds 2021 £	Total 31st March 2021 £	Total 31st March 2020 £
Wages & Salaries	151,192.3	64,797	215,989	315,839
Staff pension costs	2,381	1,021	3,402	4,707
Staff training	340	-	340	645
Rent & Rates	-	1,598	1,598	2,386
Insurances	-	3,267	3,267	3,663
Light & Heat	-	7,928	7,928	5,524
Cleaning & Toiletries	3,497	2,015	5,512	7,027
Repairs & Renewals	808	1,155	1,964	19,363
Printing, Postage & Stationery	-	10,346	10,346	8,999
Advertising & Promotion	66	-	66	-
Telephone	-	5,005	5,005	5,087
Community Engagement Activities	-	158	158	155
Motor & Travel (Staff Volunteer)	-	-	-	1,016
Tuition Fees	-	-	-	-
Professional Charges	-	40,631	40,631	42,815
Accountancy Fees	-	3,036	3,036	3,036
Audit fees	-	2,304	2,304	2,304
Bank interest & Charges	-	146	146	270
Sundries	6,075	1,991	8,066	22,208
Donations	150	1,500	1,650	7,998
Subscription	1,835	262	2,097	1,903
GNG Nursery expenses	7,475	500	7,975	6,064
Depreciation	71,704	-	71,704	72,790
	245,523	147,659	393,184	533,799

5 NET RESOURCES EXPENDED FOR THE YEAR

This is stated after charging:	2021 £	2020 £
Depreciation	71,704	72,790
Auditor's remuneration: - audit of the financial statements	2,304	2,304
	74,008	75,094

Smethwick Youth & Community Centre Limited
A Company Limited By Guarantee
Notes To The Financial Statements

6 STAFF COSTS AND EMOLUMENTS

Total staff costs were as follows:

	2021	2020
	£	£
Wages and salaries	208,395	301,048
Social security costs	7,594	14,791
	<u>215,989</u>	<u>315,839</u>

Particulars of employees:

The average number of employees during the year, calculated on the basis of full-time equivalents, was as follows:

	2021	2020
	No	No
Project manager	1	1
Finance officer	1	1
Fundraising	20	4
Charitable activities	5	17
Administration and support	1	1
	<u>28</u>	<u>24</u>

No employee received emoluments of more than £60,000 during the year Nil (2020 - Nil).

The trustees received no remuneration or expenses, either directly or indirectly from the charity.

Smethwick Youth & Community Centre Limited
A Company Limited By Guarantee
Notes To The Financial Statements
Year Ended 31 March 2021

7 TANGIBLE FIXED ASSETS

COST	Improvements to property £	Equipment £	Fixtures & Fittings £	Leasehold Property £	Total £
1st April 2020	122,616	53,218	160,120	1,224,713	1,560,667
Additions	-	-	-	-	-
As at 31st March 2021	<u>122,616</u>	<u>53,218</u>	<u>160,120</u>	<u>1,224,713</u>	<u>1,560,667</u>
DEPRECIATION					
1st April 2020	82,680	47,176	144,468	1,041,008	1,315,332
Charge for the year	6,130	1,208	3,130	61,236	71,704
As at 31st March 2021	<u>88,810</u>	<u>48,384</u>	<u>147,598</u>	<u>1,102,244</u>	<u>1,387,036</u>
Net Book Value					
1st April 2020	<u>39,936</u>	<u>6,042</u>	<u>15,652</u>	<u>183,705</u>	<u>245,335</u>
1st April 2021	<u>33,806</u>	<u>4,834</u>	<u>12,522</u>	<u>122,469</u>	<u>173,631</u>

The leasehold property comprises land and buildings. The land was leased from Guru Nanak Gurdwara (GNG) Smethwick, for a term of ten years until 5th April 2013. No depreciation was charged until 31 March 2013, on the grounds that the lease would be renewed for the foreseeable future. The trustees now feel that it is more prudent to depreciate the property, and this has been charged on the basis that the original lease was intended to run for twenty years. Thus the property is now shown at cost less 18 years' depreciation.

The trustees had and will continue to allow Smethwick Youth & Community Centre to use the premises for charitable purpose for foreseeable future until being informed otherwise.

Smethwick Youth & Community Centre Limited
A Company Limited By Guarantee

Notes To The Financial Statements

Year Ended 31 March 2021

8 DEBTORS

	2021	2020
	£	£
Trade debtors	12,635	29,759
Sandwell Metropolitan Borough Council	8	8
Furlough Grant	6,591	-
Prepayments	3,138	3,677
Other debtors (Lyreco)	77	77
Other debtors (Midshire Communications Limited)	100	100
	<u>22,549</u>	<u>33,621</u>

9 CREDITORS: Amounts falling due within one year

	2021	2020
	£	£
Trade creditors	-	-
Taxation and social security	2,120	1,598
Other creditors	154	154
Accrued expense	-	-
Pension contributions	651	811
	<u>2,925</u>	<u>2,563</u>

Smethwick Youth & Community Centre Limited
A Company Limited By Guarantee

Notes To The Financial Statements

Year Ended 31 March 2021

10 ACCUMULATED RESTRICTED INCOME FUNDS

	Notes	Bal b/fd 1st April 2020	Income Resources	Outgoing Resources	Balance at 31st March 2021
Restricted Funds:					
SYCC Building works		(638,808)		147,659	(786,466)
Core		4,500			4,500
UK Online		215,403	-		215,403
Child care invest me		35,922			35,922
Youth Interfaith Club		6,900			6,900
Steps		62,965	-		62,965
PAYP		9,576			9,576
Baron		800			800
Edwards		1,000			1,000
DWP		13,520			13,520
HPCL_Employments		12,000			12,000
GNG Welfare		24,000			24,000
Worker Education		1,490			1,490
Midshire		3,581			3,581
NEF		593,844	39,204		633,048
ELT		261,838	19,398		281,236
Sports		7,715			7,715
Good Things Foundation			17,875		17,875
EYSFF			65,902		65,902
Prior period adjustment - NEF/ELT			(17,124)		(17,124)
Total Restricted Funds		616,248	125,255	147,659	593,843

11 ACCUMULATED UNRESTRICTED INCOME FUNDS

	Bal b/fd 1st April 2020	Income Resources	Outgoing Resources	Balance at 31st March 2021
SRB4	798			798
SRB6	(17,289)			(17,289)
SRB6 e	10,750			10,750
IAG	44,514			44,514
AXA	(1,580)			(1,580)
HMRC online filing income	250			250
Childrens Fund	153			153
Dudley College	91,911			91,911
South Birmingham College	7,250			7,250
Other Unrestricted Income	20,204	-		20,204
SYCC Income	2,699			2,699
Private Tution	3,124			3,124

Smethwick Youth & Community Centre Limited
A Company Limited By Guarantee

Notes To The Financial Statements

Year Ended 31 March 2021

IDS-Donation	6,688			6,688
GNG Income - Nursery	(959,409)	77,264	245,523	(1,127,668)
Birmingham Chamber of Commerce	1,425			1,425
C & C	13,599			13,599
Computer	405			405
Room Hire	2,442			2,442
IFA	4,975			4,975
Donation	4,915			4,915
Citizen	3,139			3,139
DAF2 Training	10,873			10,873
Digital	2,000			2,000
BuddyUp	18,000			18,000
NLDC2	3,764			3,764
NLDC3	5,647			5,647
Sandwell College	17,302			17,302
WNF3	189,560			189,560
WNF_R&D	13,500			13,500
WNF4_ESOL_Phase1	4,014			4,014
WNF4_ESOL_Phase2	12,124			12,124
PAYP	7,542			7,542
Calibre	1,076			1,076
SFVYO	1,500			1,500
WNF_EMP	8,746			8,746
Big Lottery - Advice Services Fund	57,500			57,500
BMET	3,440			3,440
Consortium	280,318	65,936		346,254
SCOLL	2,400			2,400
STP	4,667			4,667
Booking	550			550
HMRC JRS Grant		59,233		59,233
Covid Grant		46,249		46,249
Total Unrestricted Funds	(114,511)	248,682	245,523	(111,353)
Total Funds	501,737	373,937	393,184	482,490

12 COMPANY LIMITED BY GUARANTEE -

Smethwick Youth & Community Centre is a company limited by guarantee and accordingly does not have a share capital.

Every member of the company undertakes to contribute such amount as may be required not exceeding £1 to the assets of the charitable company in the event of its being wound up while he or she is a member, or within one year after he or she ceases to be a member.

Smethwick Youth & Community Centre Limited
A Company Limited By Guarantee
Notes To The Financial Statements
Year Ended 31 March 2021

13 RELATED PARTIES

As disclosed in the Trustees' Report, Guru Nanak Gurdwara (GNG) Smethwick, a registered charity, is the main related party, as a set number of trustees of the charity are required to be selected from the GNG committee. The charity leases land from GNG, as disclosed in the note on fixed assets. The terms of the lease include a peppercorn rent. No rent was paid during the period. An amount of Nil (2020: nil) was contributed by SYCC to the share of Light and heat.