



CHARITY COMMISSION
FOR ENGLAND AND WALES

Trustees' Annual Report for the period

From 01.04.22 Period start date To 31.03.23 Period end date

Charity name: Integrating Children (known as Integrating)

Charity registration number: 1090260

Objectives and Activities

| | SORP reference | |
|--|--------------------|---|
| Summary of the purposes of the charity as set out in its governing document | Para 1.17 | The Charity's objects are: <ol style="list-style-type: none">1. To promote the social, emotional, mental and physical wellbeing of children, young people and adults with disabilities within Durham and the surrounding area and provide respite for their families by supporting members' inclusivity in mainstream leisure services.2. To provide practical support and advice to families and/or carers for children, young people and adults with disabilities. |
| Summary of the main activities in relation to those purposes for the public benefit, in particular, the activities, projects or services identified in the accounts. | Para 1.17 and 1.19 | Integrating Children (operating as Integrating) works with over 75 disabled children, young people and adults aged 5 – 30 years, largely within the Durham City and Chester-le-Street area. The organisation: <ul style="list-style-type: none">• Promotes the social, emotional, mental and physical wellbeing of children, young people and adults with disabilities.• Supports disabled children, young people and adults to develop confidence, social skills, positive relationships and a support network within their community. |

| | | |
|--|--|--|
| | | <ul style="list-style-type: none"> • Helps members experience fulfilling and rewarding lives through the participation in safe, but fun and enjoyable activities. • Assists members to develop their independence to operate effectively and confidently within their community. • Enables members to make positive contributions to their community by engaging in skill development related to their interests and abilities and for some, contributing to the decision-making process within the organisation and developing their leadership skills. • Enables members to make friends and develop positive, meaningful relationships. • Helps families to feel supported to fulfil their caring responsibilities. <p>This is achieved by supporting members to take part in the activities we arrange at their request.</p> <p>Our activities include:</p> <ul style="list-style-type: none"> • Gym club • Visual Arts • Music • Football training • Sportability • Ten pin bowling • Virtual gaming • Swimming • Social Saturdays • Online social activities e.g. family bingo • Residential breaks • Day trips • ‘InterThinkers’ Youth Forum • Adult outreach ‘Day Service’ for members 16 and older • Assessed Needs provision • Volunteer development programme |
|--|--|--|

| | | |
|--|-----------|--|
| | | <p>By involving members in mainstream activities, we can help them to build essential life skills such as:</p> <ul style="list-style-type: none"> • self-confidence • social skills • the ability to engage with others across different situations • a sense of purpose to combat isolation and depression by reducing the negative effect of stress and/or anxiety <p>This is particularly important as at least half of our members have difficulties with social communication and interaction, and restricted interests which impacts their ability to socialise and form lasting friendships.</p> <p>Integrating seeks to develop emotional resilience and a support network through access to fun, but safe, structured, regular and familiar activities.</p> <p>In addition, Integrating:</p> <ul style="list-style-type: none"> • Enables parents/carers to feel supported in fulfilling their caring responsibilities. • Provides short breaks for families. • Provides staff volunteering and working at Integrating every opportunity to gain experience for their future careers e.g. Social Care, Health Care, Social Work, Educational Psychology and Special Needs Education. |
| Statement confirming whether the trustees have had regard to the guidance issued by the Charity Commission on public benefit | Para 1.18 | <p>The Trustees have reviewed and have regard to the guidance issued by the Charity Commission on public benefit in the planning and provision of services and in their governance of the charity.</p> |

Additional information (optional)

You may choose to include further statements where relevant about:

| | SORP reference | |
|--|----------------|--|
| Policy on grant making | Para 1.38 | Integrating does not make grants to individuals although in exceptional circumstances, will support involvement in activities by paying or subsidising costs for families facing difficulties e.g. access to residential opportunities. |
| Policy on social investment including program related investment | Para 1.38 | The organisation has no investments nor policy in relation to this. Due to the size of the organisation, it is highly unlikely that this will apply. |
| Contribution made by volunteers | Para 1.38 | Integrating values volunteers and has a small, but active, group of volunteers at all levels of the organisation: <ul style="list-style-type: none">• Trustees who have control over the management and administration of the charity e.g. fundraising, recruitment and managing senior staff• Volunteers who support staff in the delivery of services• Local volunteers who help with fundraising initiatives Integrating believes that volunteering is beneficial to individuals' mental and physical health; it is a mutual exchange of time and skills. Integrating provides training, support and tangible appreciation of any voluntary activity. All volunteers who have contact with Integrating members, or who have access to sensitive information and decisions taken, have been recruited, DBS checked and inducted to a standard comparable to that of the recruitment of staff. |
| Other | | |

Achievements and Performance

| | SORP reference | |
|---|----------------|--|
| Summary of the main achievements of the charity, identifying the difference the charity's work has made to the circumstances of its beneficiaries and any wider benefits to society as a whole. | Para 1.20 | <p>Attendance at Integrating activities has a positive impact on the social skills of members, achieved through the many and varied opportunities to engage with peers without the presence of parents and/or carers. This allows our members to develop positive relationships, increase their support network and make friends on their own terms. This has been freely expressed by members in discussion with their support workers on many occasions. Our members value the fact the Integrating:</p> <ul style="list-style-type: none"> • Allows them to make new friends and build positive relationships which are important for developing their own identity. • Enables them to build lasting friendships over prolonged periods. Children and young people with disabilities can often move in and out of services, but Integrating's long-term support allows lasting and meaningful friendships to be maintained. <p>Many of the young people recognise that being involved with Integrating simply makes them feel better about themselves. This can be seen on many occasions where young people come to activities angry or frustrated from something that has happened to them at home or school. Through engagement with familiar and trusted support workers and with the help of their friends, any stress and/or feelings of negativity soon dissipate. Members have also told staff that they fully enjoy being independent, taking part in activities away from parents and carers.</p> |

| | | |
|--|--|--|
| | | <p>Parents consistently echo our members' thoughts and are particularly appreciative of the opportunities their children and young people have to engage in fun, safe and rewarding activities with their own friends, but without the worry that can come from being a parent, especially when entrusting their disabled child or youngster to another person's care.</p> <p>Such success has been achieved through the continuous hard work of Integrating's Trustees, staff, volunteers, partners and all the families who have played their part in making the charity run safely and in an enjoyable way.</p> |
|--|--|--|

Additional information (optional)

You may choose to include further statements where relevant about:

| | | |
|--|-----------|--|
| Achievements against objectives set | Para 1.41 | <p>Integrating offers an adult outreach service for over 16s who no longer attend full-time education.</p> <p>Integrating also offers a service to referrals from partner agencies based on individuals' assessed needs.</p> |
| Performance of fundraising activities against objectives set | Para 1.41 | <p>Fundraising has been very positive with existing funders continuing to support Integrating's objectives.</p> |
| Investment performance against objectives | Para 1.41 | <p>Not applicable</p> |
| Other | | |

Financial Review

| | | |
|--|-----------|---|
| Review of the charity's financial position at the end of the period | Para 1.21 | <p>Integrating achieved income of:</p> <ul style="list-style-type: none"> • Unrestricted: £3,550 • Restricted: £ 232,490 <p>Expenditure</p> <ul style="list-style-type: none"> • Unrestricted: £3,748 • Restricted: £230,919 <p>Brought forward</p> <ul style="list-style-type: none"> • Unrestricted: £38,655 • Restricted: £22,9678 <p>Carried forward</p> <ul style="list-style-type: none"> • Unrestricted: £38,457 • Restricted: £229,678 • Total £268,135 |
| Statement explaining the policy for holding reserves stating why they are held | Para 1.22 | <p>Integrating holds a small reserve of about £30,000 together with a dynamic financial management policy, which ensures there are sufficient funds to ensure the organisation can operate for a year on current grant/contract income. Whilst the charity would like to develop a reserve fund which would allow six month's operations, the trustees do not see there being a likelihood of being able to accrue this level of reserves in the foreseeable future. The charity has no long-term liabilities and has been able to operate on an income from diverse sources and payments dates for many years.</p> |
| Amount of reserves held | Para 1.22 | £30,000 |
| Reasons for holding zero reserves | Para 1.22 | Not applicable |
| Details of fund materially in deficit | Para 1.24 | Not applicable |
| Explanation of any uncertainties about the charity continuing as a going concern | Para 1.23 | Not applicable |

Additional information (optional)

You may choose to include further statements where relevant about:

| | | |
|---|-----------|---|
| The charity's principal sources of funds (including any fundraising) | Para 1.47 | Local authority contracts 60% Independent trusts and other funders 35% Local fundraising/donations 5% |
| Investment policy and objectives including any social investment policy adopted | Para 1.46 | Not applicable |
| A description of the principal risks facing the charity | Para 1.46 | I. Insufficient fund to maintain the organisation <ul style="list-style-type: none"> • Fundraising drives at least three times each year • Pursue all opportunities for funding II. Lose full time posts <ul style="list-style-type: none"> • Seek extension of funding |
| Other | | |

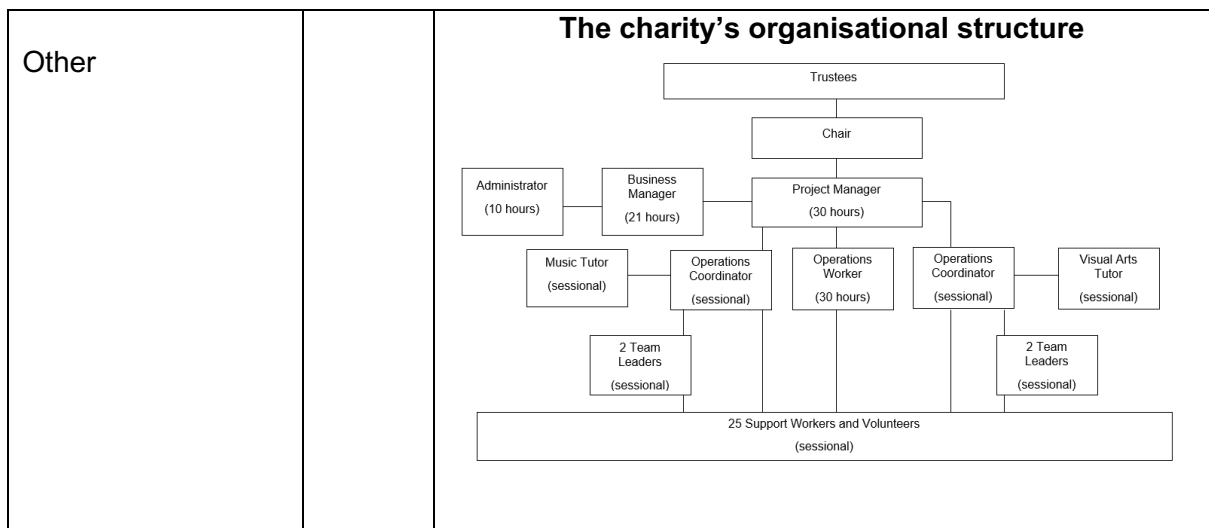
Structure, Governance and Management

| | | |
|---|-----------|---|
| Description of charity's trusts: | | |
| Type of governing document (trust deed , royal charter) | Para 1.25 | Constitution |
| How is the charity constituted? (e.g unincorporated association , CIO) | Para 1.25 | Incorporated registered charity |
| Trustee selection methods including details of any constitutional provisions e.g. election to post or name of any person or body entitled to appoint one or more trustees | Para 1.25 | <p>The constitution requires the membership to elect the full board of Trustees at the AGM each year.</p> <p>In reviewing the charity's selection methods, it has been agreed that:</p> <ol style="list-style-type: none"> I. The board will review the group's strengths and needs in February each year and any potential vacancies II. Publicly advertise and recruit for appropriately qualified candidates III. Confirm any new Trustees at AGM by membership. |

Additional information (optional)

You may choose to include further statements where relevant about:

| | | |
|---|-----------|--|
| Policies and procedures adopted for the induction and training of trustees | Para 1.51 | <p>Integrating provides a full induction to all new Trustees on appointment based largely around the Charity Commission advice and the constitution of the organisation. Periodic refresher training is provided for Trustees in both their role and operational matters such as safeguarding and the needs of children and young people with disabilities.</p> |
| The charity's organisational structure and any wider network with which the charity works | Para 1.51 | <p>Integrating does not have structural links with other organisations but does have relationships with:</p> <ul style="list-style-type: none"> • Parents/carers – in partnership • Local authority – contractual • Local organisations – delivery partnership |
| Relationship with any related parties | Para 1.51 | |



Reference and Administrative details

| | |
|-----------------------------|---|
| Charity name | Integrating |
| Other name the charity uses | Integrating Children and Young People |
| Registered charity number | 1090260 |
| Charity's principal address | Bullion Hall South Approach Chester-le-Street County Durham DH2 2DW |
| | |

Names of the charity trustees who manage the charity

| | Trustee name | Office (if any) | Dates acted if not for whole year | Name of person (or body) entitled to appoint trustee (if any) |
|----|-------------------|-----------------|-----------------------------------|---|
| 1 | Richard Taylor | Chair | | Members |
| 2 | Sarah Warwick | Vice-Chair | | Members |
| 3 | Lynne Thompson | Treasurer | | Members |
| 4 | Paul Archer | | | Members |
| 5 | Elizabeth Burns | | | Members |
| 6 | Lynne Clark | | | Members |
| 7 | Benedict Corrigan | | From July 2023 | Members |
| 8 | Kimberley Handley | | From July 2023 | Members |
| 9 | Lucy Hinds | | | Members |
| 10 | Michael McGlone | | | Members |
| 11 | Jayne Oliver | | | Members |
| 12 | Alison White | | | Members |
| 13 | | | | |
| 14 | | | | |
| 15 | | | | |
| 16 | | | | |
| 17 | | | | |
| 18 | | | | |
| 19 | | | | |
| 20 | | | | |

Corporate trustees – names of the directors at the date the report was approved

| Director name | Not applicable | |
|---------------|----------------|--|
| | | |
| | | |
| | | |
| | | |
| | | |
| | | |

Name of trustees holding title to property belonging to the charity

| Trustee name | Dates acted if not for whole year | |
|--------------|-----------------------------------|--|
| | Not applicable | |
| | | |
| | | |
| | | |
| | | |
| | | |

Funds held as custodian trustees on behalf of others

| | |
|---|----------------|
| Description of the assets held in this capacity | Not applicable |
| Name and objects of the charity on whose behalf the assets are held and how this falls within the custodian charity's objects | Not applicable |
| Details of arrangements for safe custody and segregation of such assets from the charity's own assets | Not applicable |

Additional information (optional)

Names and addresses of advisers (Optional information)

| Type of adviser | Name | Address |
|-----------------|------|---------|
| | | |
| | | |
| | | |
| | | |

Name of chief executive or names of senior staff members (Optional information)

David Gaudie- Project Manager
Kathryn Gaudie-Jones – Business manager

Exemptions from disclosure

Reason for non-disclosure of key personnel details

| |
|--|
| |
|--|

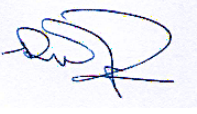
Other optional information

| |
|--|
| |
|--|

Declarations

The trustees declare that they have approved the trustees' report above.

Signed on behalf of the charity's trustees

| | | |
|-------------------------------------|---|--|
| Signature(s) |  | |
| Full name(s) | Richard William Taylor | |
| Position (eg Secretary, Chair, etc) | Chair | |
| Date | 7 th January 2024 | |

Integrating Children

**Financial Statements for the Period ended
31st March 2023**

Charity No: 1090260

***Community Accounting CIC
Pinetree Centre
Durham Road
Birtley
Co. Durham
DH3 2TD***

Integrating Children

CONTENTS

Statement of Financial Activities

Balance Sheet

Notes to the Financial Statements

Integrating Children

Statement of Financial Activities (including Income & Expenditure Account) For the Year ended 31st March 2023

| | Unrestricted Funds 2023 £ | Restricted Funds 2023 £ | Total Funds 2023 £ | Total Funds 2022 £ |
|----------------------------------|------------------------------------|----------------------------------|-----------------------------|-----------------------------|
| Incoming Resources | | | | |
| Fund Raising and Donations | 3,550 | | 3,550 | 7,082 |
| Grants | | 204,784 | 204,784 | 215,673 |
| Income generated from Activities | 0 | 27,706 | 27,706 | 5,014 |
| Interest Received | 0 | | 0 | 0 |
| Other Income | 0 | | 0 | 0 |
| Total Incoming Resources | <u>3,550</u> | <u>232,490</u> | <u>236,040</u> | <u>227,769</u> |
| Resources Expended | | | | |
| Direct Costs | | 49,254 | 49,254 | 30,652 |
| Staffing Costs | 0 | 169,298 | 169,298 | 112,305 |
| Administration | 3,748 | 15,180 | 18,928 | 18,337 |
| Total Resources Expended | <u>3,748</u> | <u>233,731</u> | <u>237,479</u> | <u>161,294</u> |
| Net Incoming Resources | <u>(198)</u> | <u>(1,241)</u> | <u>(1,440)</u> | <u>66,475</u> |
| Transfer between Funds | 0 | 0 | | |
| Total Funds Brought Forward | 38,655 | 230,919 | 269,574 | 203,099 |
| Total Funds Carried Forward | <u>38,457</u> | <u>229,678</u> | <u>268,134</u> | <u>269,574</u> |

Integrating Children

Balance Sheet as at 31st March 2023

| | 2023 £ | 2022 £ |
|----------------------------------|----------------|----------------|
| Fixed Assets | | |
| Tangible Fixed Assets | 3,681 | 5,128 |
| Current Assets | | |
| Debtors | | |
| Cash at Bank and in Hand | 264,703 | 264,696 |
| | <u>264,703</u> | <u>264,696</u> |
| Less | | |
| Current Liabilities | | |
| (Payable within one year) | | |
| Accruals | <u>250</u> | <u>250</u> |
| Net Current Assets | 264,453 | 264,446 |
| Net Assets | <u>268,134</u> | <u>269,574</u> |
| Funded by | | |
| Unrestricted Funds | | |
| General | | |
| Capital | 3,681 | 5,128 |
| Revenue | <u>34,776</u> | <u>33,527</u> |
| | 38,457 | 38,655 |
| Restricted Funds | 229,678 | 230,919 |
| Total Funds | <u>268,134</u> | <u>269,574</u> |

Approved



Trustee

Date: 11th November 2023.

Integrating Children

Notes forming part of the Financial Statements to 31st March 2023

1) Accounting Policies

The principal accounting policies are summarised below, The accounting policies have been applied consistently throughout the year and in the preceding year.

a) Basis of accounting

The financial statements have been prepared under the historical cost convention in accordance with the Statement of Recommended Practice: Accounting and Reporting by Charities issued in March 2005.

b) Revenue Grants

Gross amount received as recognised within incoming resources and corresponding expense is shown with outgoing resources

c) Taxation

The charity is registered and exempt from taxation on its charitable activities

d) Fixed Assets

Fixed assets are stated at cost less accumulated depreciation. Depreciation is provided at rates calculated to write off the cost of each asset over its expected useful life.

| | |
|----------------------------|-------------------|
| Music and Office Equipment | 15% Straight Line |
| Computer Equipment | 15% Straight Line |

Integrating Children

Notes forming part of the Financial Statements to 31st March 2023

2) Incoming Resources

| Grants | Unrestricted | Restricted | Total 2023 | Total 2022 |
|------------------------------------|--------------|------------|---------------|---------------|
| Big Lottery Mains Grant | | 33,166 | 33,166 | 30,840 |
| GMBC | | 46,480 | 46,480 | 29,915 |
| Greggs | | 20,000 | 20,000 | |
| Big Lottery Community Fund | | 6,424 | 6,424 | 10,000 |
| Ballinger Trust | | 8,000 | 8,000 | 7,912 |
| Joseph Strong | | 1,000 | 1,000 | |
| Durham and Dundee Special Needs | | 40,588 | 40,588 | 55,914 |
| Durham County Council Moving on up | | | 0 | 24,645 |
| Durham County Council | | 49,126 | 49,126 | 56,447 |
| | 0 | 204,784 | 204,784 | 215,673 |

Income Generated from Activities

| | Unrestricted | Restricted | Total 2023 | Total 2022 |
|--------------------|--------------|------------|---------------|---------------|
| Holiday Activities | | | | |
| Other Activities | | 27,706 | 27,706 | 5,014 |
| | 0 | 27,706 | 27,706 | 5,014 |

Integrating Children

Notes forming part of the Financial Statements to 31st March 2023

3) Resources Expended

| Direct Costs | | | 2023 | 2022 |
|--|---------------------|-------------------|-----------------------|-----------------------|
| Holiday Activities | | | 3,795 | 6,348 |
| Other Activities | | | 45,459 | 24,305 |
| | | | <u>49,254</u> | <u>30,653</u> |
| Staff Costs | | | | |
| No employee earned more than £60,000 durin the year | | | 169,298 | 112,305 |
| Average no. of employees (including those in direct costs) | | | <u>9</u> | <u>8</u> |
| Administration | | | Total 2023 | Total 2022 |
| | Unrestricted | Restricted | | |
| Rent | | 11,304 | 11,304 | 9,517 |
| Insurance | 404 | | 404 | 404 |
| Postage | | | | 80 |
| Sundries | 1,897 | 31 | 1,928 | 2,626 |
| Equipment | | 3,846 | 3,846 | 3,510 |
| Depreciation | 1,447 | | 1,447 | 2,201 |
| | <u>3,748</u> | <u>15,181</u> | <u>18,928</u> | <u>18,338</u> |

Integrating Children

Notes forming part of the Financial Statements to 31st March 2023

4) Trustees Remuneration and Related Party Transactions

No member of the management committee received any remuneration during the year.

5) Tangible Fixed Assets

| | <u>Music & Office Equipment</u> | <u>Computer Equipment</u> | <u>Total</u> |
|---------------------------|--|--------------------------------------|---------------------|
| Cost | | | |
| As at 1st April 2022 | 9,646 | 9,099 | 18,745 |
| Additions | | | 0 |
| Disposals | | | 0 |
| As at 31st March 2023 | <u>9,646</u> | <u>9,099</u> | <u>18,745</u> |
| Depreciation | | | |
| As at 1st April 2022 | 4,519 | 9,098 | 13,617 |
| Charge for Year | 1,447 | | 1,447 |
| Elimated on Disposal | | | 0 |
| As at 31st March 2023 | <u>5,966</u> | <u>9,098</u> | <u>15,064</u> |
| NBV as at 31st March 2023 | <u>3,680</u> | <u>1</u> | <u>3,681</u> |
| NBV as at 31st March 2022 | <u>5,127</u> | <u>1</u> | <u>5,128</u> |

6) Creditors

| | 2023 | 2022 |
|----------|-------------|-------------|
| Accounts | 250 | 250 |
| | <u>250</u> | <u>250</u> |

Integrating Children

Notes forming part of the Financial Statements to 31st March 2023

7) Analysis of Net Assets between Funds

| | General Funds | Restricted Funds | Total |
|-----------------------|------------------|---------------------|----------------|
| Tangible Fixed Assets | 3,681 | | 3,681 |
| Current Assets | 35,026 | 229,677 | 264,703 |
| Current Liabilities | (250) | | (250) |
| | <u>38,457</u> | <u>229,677</u> | <u>268,134</u> |

8) Movement of Funds

| | As at 1st April 2022 | Incoming Resources | Outgoing Resources | Transfers | As at 31st March 2023 |
|--|----------------------------|-----------------------|-----------------------|-----------|-----------------------------|
| Durham and Dundee Special Needs | 32,550 | 40,588 | (40,588) | | 32,550 |
| Big Lottery Mains Grant | | 33,166 | (33,166) | | 0 |
| GMBC | | 46,480 | (46,480) | | 0 |
| Big Lottery Community Fund | | 6,424 | (6,424) | | 0 |
| Ballinger Trust | | 8,000 | (8,000) | | 0 |
| Joseph Strong | | 1,000 | (1,000) | | 0 |
| Greggs Trust | | 20,000 | (20,000) | | 0 |
| Durham County Council | 173,723 | 49,126 | (25,722) | | 197,127 |
| Durham County Council Moving on up Activities | 24,645 | | (24,645) | | 0 |
| | | 27,706 | (27,706) | | 0 |
| Total Restricted | <u>230,918</u> | <u>232,490</u> | <u>(233,731)</u> | <u>0</u> | <u>229,677</u> |
| | | | | | 0 |
| Unrestricted Funds | | | | | 0 |
| General Funds (Capital) | 14,421 | | (1,447) | (9,293) | 3,681 |
| General Funds (Revenue) | 24,234 | 3,550 | (2,301) | 9,293 | 34,776 |
| | | | | | 0 |
| General Funds | <u>38,655</u> | <u>3,550</u> | <u>(3,748)</u> | <u>0</u> | <u>38,457</u> |
| Total Funds | <u>269,573</u> | <u>236,040</u> | <u>(237,479)</u> | <u>0</u> | <u>268,134</u> |

Transfer of Funds to Designated represents the increase in provision for redundancy

Transfer of funds from Capital to Revenue represents the depreciation charge for the year

Community Accounting

North East CIC

Pinetree Centre, Durham Road, Birtley, DH3 2TD
Tel: 0191 4928232

Sunderland Women's Centre
8 Green Terrace
Sunderland
SR1 3PZ

Accountant's / Independent Examiner's Report

I report on the accounts of Sunderland Women's Centre for the year ended 31st July 2023

Respective Responsibilities of Trustees and Examiner

The trustees of the charity are responsible for the preparation of accounts; they consider that the audit requirement under section 144 of the Charities Act 2011 does not apply. I have been appointed under the Charities Act 2011 and report in accordance with the regulations made under section 145 of that Act. It is my responsibility to examine the accounts and statement, without performing an audit, and to report to the trustees.

Basis of Examiner's Statement

This report is in respect of an examination carried out under the directions of Charities Act 2011 and in accordance with the directions given by the Charity Commissioners, an examination includes a review of the accounting records kept by the charity trustees and a comparison of the accounts presented with those records. It also includes a review of the accounts and making such enquiries as are necessary for the purpose of this report. The procedures undertaken do not constitute an audit.

Examiner's Statement

Based on my examination, no matter has come to my attention which gives me reasonable cause to believe, that in any material respect, accounting records have not been kept in accordance with section 130 of the Charities Act 2011. or that the accounts presented do not accord with those records or comply with the accounting requirements of the Companies Act 2006. No matter has come to my attention in connection with my examination to which, in my opinion, attention should be drawn to enable a proper understanding of the accounts.

In my opinion, the accounts are in agreement with the accounting records kept by the company , and have regard only to, and on the basis of, the information contained in those accounting records, those accounts have been drawn up in a manner consistent with the provisions of this Act specified, so far as is applicable to the company.

Community Accounting

North East CIC

Pinetree Centre, Durham Road, Birtley, DH3 2TD
Tel: 0191 4928232

In my opinion, having regard to and on the basis of, the information contained in the accounting records kept by the company, the company as a charity satisfied the requirements of the Act for the financial year.

Terry Atkinson
Independent Examiner
6th November 2023