



CHARITY COMMISSION
FOR ENGLAND AND WALES

Trustees' Annual Report for the period

From 01.04.21 Period start date To 31.03.22 Period end date

Charity name: Integrating Children (known as Integrating)

Charity registration number: 1090260

Objectives and Activities

	SORP reference	
Summary of the purposes of the charity as set out in its governing document	Para 1.17	The Charity's objects are: <ol style="list-style-type: none">1. To promote the social, emotional, mental and physical wellbeing of children, young people and adults with disabilities within Durham and the surrounding area and respite for their families by supporting members' inclusivity in mainstream leisure services.2. To provide practical support and advice to families and/or carers for children, young people and adults with disabilities.
Summary of the main activities in relation to those purposes for the public benefit, in particular, the activities, projects or services identified in the accounts.	Para 1.17 and 1.19	Integrating Children (operating as Integrating) works with over 100 disabled children, young people and adults aged 5 – 30 years, largely within the Durham City and Chester-le-Street area. The organisation: <ul style="list-style-type: none">• Promotes the social, emotional, mental and physical wellbeing of children, young people and adults with disabilities.• Supports disabled children, young people and adults to develop the social skills and confidence to be able to take part in leisure and recreational activities in their local community.

		<ul style="list-style-type: none"> • Helps members experience full and interesting lives through the participation in enjoyable, constructive and activities. • Assists members to develop their independence, operate effectively and confidently within the community • Enables many members to make positive contributions to their community by engaging in skill development related to their interests and abilities, for some contributing to the decision-making process within the organisation and for others, developing their leadership skills. • Enables members to have fun and make lasting friendships. • Provides advice and respite for families experiencing difficulties in stressful situations. <p>This is achieved by supporting members to take part in the activities we arrange at their request.</p> <p>Our activities include:</p> <ul style="list-style-type: none"> • Gym club • Music • Digital Arts • Football training • Sportability • Ten pin bowling • Gaming • Swimming • Social Saturdays • Online social activities e.g. family bingo • Residential breaks • Day trips • InterThinkers Youth Forum • 'Moving On Up' – Day Service • Assessed Needs programme • Volunteer development programme
--	--	-------------------------------------------------------------------------------------------------------------------------------------------------------------------------------------------------------------------------------------------------------------------------------------------------------------------------------------------------------------------------------------------------------------------------------------------------------------------------------------------------------------------------------------------------------------------------------------------------------------------------------------------------------------------------------------------------------------------------------------------------------------------------------------------------------------------------------------------------------------------------------------------------------------------------------------------------------------------------------------------------------------------------------------------------------------------------------------------------------------------------------------------------------------------------------------------------------------------------------------------------------------------------------------------------------------------------------------------------------------------------------------------------------------------------------------------------

		<p>By involving members in mainstream activities, we can help them to build essential life skills such as:</p> <ul style="list-style-type: none"> • self-confidence • social skills • the ability to engage with others in different situations • a sense of purpose to combat depression • the ability to reduce the effects of stress and/or anxiety <p>This is particularly important as at least half of our members have Autism, which, by its very nature, can create isolation with a lack of meaningful or rewarding relationships.</p> <p>Integrating seeks to develop emotional resilience and security through access to regular and familiar activities.</p> <p>In addition, Integrating:</p> <ul style="list-style-type: none"> • Enables parents/carers of children, young people and adults with disabilities to have regular respite to spend time with other family members • Provides staff who volunteer and work at Integrating the chance to gain experience for their future careers e.g. Adult Social Care, Medicine and Nursing, Social Work, Educational Psychology and Special Needs Education.
Statement confirming whether the trustees have had regard to the guidance issued by the Charity Commission on public benefit	Para 1.18	<p>The Trustees have reviewed and have regard to the guidance issued by the Charity Commission on public benefit in the planning and provision of services and in their governance of the charity.</p>

Additional information (optional)

You may choose to include further statements where relevant about:

	SORP reference	
Policy on grant making	Para 1.38	<p>Integrating does not make grants to individuals although in exceptional circumstances, will support involvement in activities by paying or subsidising costs for families facing</p>

		difficulties e.g. access to residential opportunities.
Policy on social investment including program related investment	Para 1.38	The organisation has no investments nor policy in relation to this. Due to the size of the organisation, it is highly unlikely that this will apply.
Contribution made by volunteers	Para 1.38	<p>Integrating values volunteers and has a small, but active, group of volunteers at all levels of the organisation:</p> <ul style="list-style-type: none"> • Trustees who have control over the management and administration of the charity e.g. fundraising, recruitment and managing senior staff • Volunteers who support staff in the delivery of services • Local volunteers who help with fundraising initiatives <p>Integrating believes that volunteering is beneficial to individual's mental and physical health; it is a mutual exchange of time and skills. Integrating provides training, support and tangible appreciation of voluntary activity.</p> <p>All volunteers who have contact with Integrating members, or who have access to sensitive information and decisions taken, have been recruited, DBS checked and inducted to a standard comparable to that of the recruitment of staff.</p>
Other		

Achievements and Performance

	SORP reference	
--	----------------	--

Summary of the main achievements of the charity, identifying the difference the charity's work has made to the circumstances of its beneficiaries and any wider benefits to society as a whole.

Para 1.20

Attendance at Integrating activities has a positive impact on the socialisation of members, achieved through the many and varied opportunities to engage with peers without the presence of parents and/or carers. This allows our members to increase their social network and make friends on their own terms. This has been freely expressed by members in discussion with their support workers on many occasions. Our members value the fact the Integrating:

- **Allows them to make new friends and develop social networks which are important for developing their own identity**
- **Builds lasting friendships over prolonged periods. Children and young people with disabilities can often move in and out of services, but Integrating's long-term support enables lasting and meaningful friendships to be maintained**

Many of the young people recognise that being involved with Integrating simply makes them feel better about themselves. This can be seen on many occasions where young people come to activities angry or frustrated from something that has happened to them at home or school. Through engagement with familiar and trusted support workers and their friends, any stress and feelings of negativity soon dissipates. Members have also told staff that they fully enjoy being independent, taking part in activities away from parents and carers.

Parents consistently echo our members' thoughts and are particularly appreciative of the opportunities their children and young people have to engage in fun,

		<p>safe and rewarding activities with their own friends, but without the worry that can come from being a parent, especially when entrusting their disabled child or youngster to another person's care.</p> <p>These successes have been achieved through the continuous hard work of Integrating's Trustees, staff, volunteers, partners and all the families who have played their part in making the charity run safely and in an enjoyable way.</p>
--	--	----------------------------------------------------------------------------------------------------------------------------------------------------------------------------------------------------------------------------------------------------------------------------------------------------------------------------------------------------------------------------------------------------------------------------------------------------------

Additional information (optional)

You may choose to include further statements where relevant about:

Achievements against objectives set	Para 1.41	<p>Integrating began its transition back to live activities and has been fully operational since February 2022.</p> <p>Integrating has since developed a service called 'Inter-Plus', which is a day care service for young adults who no longer attend education. It is called 'Moving On Up.'</p> <p>Integrating also offers a service to referrals from partner agencies based on assessed needs.</p>
Performance of fundraising activities against objectives set	Para 1.41	<p>Fundraising has been very positive with existing funders continuing to support Integrating's objectives.</p>
Investment performance against objectives	Para 1.41	<p>Not applicable</p>
Other		

Financial Review

Review of the charity's financial position at the end of the period	Para 1.21	<p>Integrating achieved income of:</p> <ul style="list-style-type: none"> • Unrestricted: £7,082 • Restricted: £220, 687 <p>Expenditure</p> <ul style="list-style-type: none"> • Unrestricted: £2, 812 • Restricted: £158, 482 <p>Brought forward</p> <ul style="list-style-type: none"> • Unrestricted: £34, 384 • Restricted: £168, 715 <p>Carried forward</p> <ul style="list-style-type: none"> • Unrestricted: £38, 655 • Restricted: £230, 919 • Total £269, 574
Statement explaining the policy for holding reserves stating why they are held	Para 1.22	<p>Integrating holds a small reserve of about £30,000 together with a dynamic financial management policy, which ensures there are sufficient funds to ensure the organisation can operate for a year on current grant/contract income. Whilst the charity would like to develop a reserve fund which would allow six month's operations, the trustees do not see there being a likelihood of being able to accrue this level of reserves in the foreseeable future. The charity has no long-term liabilities and has been able to operate on an income from diverse sources and payments dates for many years.</p>
Amount of reserves held	Para 1.22	£30,000
Reasons for holding zero reserves	Para 1.22	Not applicable
Details of fund materially in deficit	Para 1.24	Not applicable
Explanation of any uncertainties about the charity continuing as a going concern	Para 1.23	Not applicable

Additional information (optional)

You may choose to include further statements where relevant about:

		<p>Local authority contracts</p> <p>Independent trusts</p>	60%
--	--	--------------------------------------------------------------------------	------------

The charity's principal sources of funds (including any fundraising)	Para 1.47	and other funders 35% Local fundraising/donations 5%
Investment policy and objectives including any social investment policy adopted	Para 1.46	Not applicable
A description of the principal risks facing the charity	Para 1.46	I. Insufficient fund to maintain the organisation <ul style="list-style-type: none"> • Fundraising drives at least three times each year • Pursue all opportunities for funding II. Lose full time posts <ul style="list-style-type: none"> • Seek extension of funding
Other		

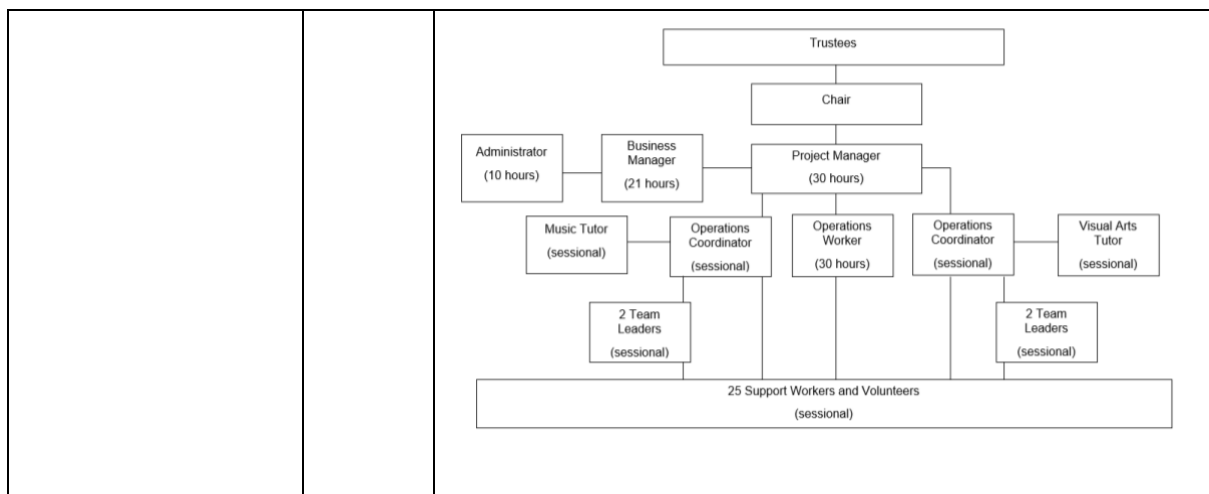
Structure, Governance and Management

Description of charity's trusts:		
Type of governing document (trust deed, royal charter)	Para 1.25	Constitution
How is the charity constituted? (e.g unincorporated association, CIO)	Para 1.25	Incorporated registered charity
Trustee selection methods including details of any constitutional provisions e.g. election to post or name of any person or body entitled to appoint one or more trustees	Para 1.25	<p>The constitution requires the membership to elect the full board of Trustees at the AGM each year.</p> <p>In reviewing the charity's selection methods, it has been agreed that:</p> <ol style="list-style-type: none"> I. The board will review the group's strengths and needs in February each year and any potential vacancies II. Publicly advertise and recruit for appropriately qualified candidates III. Confirm any new Trustees at AGM by membership.

Additional information (optional)

You may choose to include further statements where relevant about:

Policies and procedures adopted for the induction and training of trustees	Para 1.51	<p>Integrating provides a full induction to all new Trustees on appointment based largely around the Charity Commission advice and the constitution of the organisation. Periodic refresher training is provided for Trustees in both their role and operational matters such as safeguarding and the needs of children and young people with disabilities.</p>
The charity's organisational structure and any wider network with which the charity works	Para 1.51	<p>Integrating does not have structural links with other organisations but does have relationships with:</p> <ul style="list-style-type: none"> • Parents/carers – in partnership • Local authority – contractual • Local organisations – delivery partnership
Relationship with any related parties	Para 1.51	
Other		The charity's organisational structure



Reference and Administrative details

Charity name	Integrating
Other name the charity uses	Integrating Children and Young People
Registered charity number	1090260
Charity's principal address	Bullion Hall South Approach Chester-le-Street County Durham DH2 2DW

Names of the charity trustees who manage the charity

	Trustee name	Office (if any)	Dates acted if not for whole year	Name of person (or body) entitled to appoint trustee (if any)
1	Richard Taylor	Chair		Members
2	Sarah Warwick	Vice-Chair		Members
3	Lynne Thompson	Treasurer		Members
4	Karen Bowlzer	Secretary		Members
5	Paul Archer			Members
6	Emma Bowlzer			Co-opted
7	Elizabeth Burns			Members
8	Lucy Hinds			Members
9	Alison Laverick			Members
10	Jayne Oliver			Members
11	Julie Pattinson			Members
12	Alison White			Members
13				
14				
15				
16				
17				
18				
19				
20				

Corporate trustees – names of the directors at the date the report was approved

Director name	Not applicable	

Name of trustees holding title to property belonging to the charity

Trustee name	Dates acted if not for whole year	
	Not applicable	

Funds held as custodian trustees on behalf of others

Description of the assets held in this capacity	Not applicable
Name and objects of the charity on whose behalf the assets are held and how this falls within the custodian charity's objects	Not applicable
Details of arrangements for safe custody and segregation of such assets from the charity's own assets	Not applicable

Additional information (optional)

Names and addresses of advisers (Optional information)

Type of adviser	Name	Address

Name of chief executive or names of senior staff members (Optional information)

David Gaudie- Project Manager
Kathryn Gaudie-Jones – Business manager

Exemptions from disclosure

Reason for non-disclosure of key personnel details

--

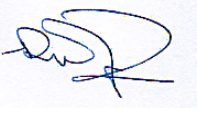
Other optional information

--

Declarations

The trustees declare that they have approved the trustees' report above.

Signed on behalf of the charity's trustees

Signature(s)		
Full name(s)	Richard William Taylor	
Position (eg Secretary, Chair, etc)	Chair	
Date	14 th January 2023	

Integrating Children

**Financial Statements for the Period ended
31st March 2022**

Charity No: 1090260

***Community Accounting CIC
Pinetree Centre
Durham Road
Birtley
Co. Durham
DH3 2TD***

Integrating Children

CONTENTS

Statement of Financial Activities

Balance Sheet

Notes to the Financial Statements

Integrating Children

Statement of Financial Activities (including Income & Expenditure Account) For the Year ended 31st March 2022

	Unrestricted Funds 2022 £	Restricted Funds 2022 £	Total Funds 2022 £	Total Funds 2021 £
Incoming Resources				
Fund Raising and Donations	7,082		7,082	4,043
Grants		215,673	215,673	215,707
Income generated from Activities	0	5,014	5,014	1,390
Interest Received	0		0	0
Other Income	0		0	0
Total Incoming Resources	<u>7,082</u>	<u>220,687</u>	<u>227,769</u>	<u>221,140</u>
Resources Expended				
Direct Costs		30,652	30,652	6,217
Staffing Costs	0	112,305	112,305	59,094
Administration	2,812	15,525	18,337	8,293
Total Resources Expended	<u>2,812</u>	<u>158,482</u>	<u>161,294</u>	<u>73,604</u>
Net Incoming Resources	<u>4,271</u>	<u>62,204</u>	<u>66,475</u>	<u>147,536</u>
Transfer between Funds	0	0		
Total Funds Brought Forward	34,384	168,715	203,099	55,563
Total Funds Carried Forward	<u>38,655</u>	<u>230,919</u>	<u>269,574</u>	<u>203,099</u>

Integrating Children

Balance Sheet as at 31st March 2022

	2022 £	2021 £
Fixed Assets		
Tangible Fixed Assets	5,128	7,339
Current Assets		
Debtors		
Cash at Bank and in Hand	<u>264,696</u>	<u>196,010</u>
	264,696	196,010
Less		
Current Liabilities		
(Payable within one year)		
Accruals	<u>250</u>	<u>280</u>
Net Current Assets	264,446	195,730
Net Assets	<u>269,574</u>	<u>203,069</u>
Funded by		
Unrestricted Funds		
General		
Capital	5,128	7,339
Revenue	<u>33,526</u>	<u>27,015</u>
	38,655	34,354
Restricted Funds	230,919	168,715
Total Funds	<u>269,574</u>	<u>203,069</u>

Approved

..... Trustee

Date.....

Integrating Children

Notes forming part of the Financial Statements to 31st March 2022

1) Accounting Policies

The principal accounting policies are summarised below, The accounting policies have been applied consistently throughout the year and in the preceding year.

a) Basis of accounting

The financial statements have been prepared under the historical cost convention in accordance with the Statement of Recommended Practice: Accounting and Reporting by Charities issued in March 2005.

b) Revenue Grants

Gross amount received as recognised within incoming resources and corresponding expense is shown with outgoing resources

c) Taxation

The charity is registered and exempt from taxation on its charitable activities

d) Fixed Assets

Fixed assets are stated at cost less accumulated depreciation. Depreciation is provided at rates calculated to write off the cost of each asset over its expected useful life.

Music and Office Equipment	15% Straight Line
Computer Equipment	15% Straight Line

Integrating Children

Notes forming part of the Financial Statements to 31st March 2022

2) Incoming Resources

Grants	Unrestricted	Restricted	Total 2022	Total 2021
Mains Grant Lottery		30,840	30,840	0
GMBC		29,915	29,915	0
Big Lottery Community Fund		10,000	10,000	0
Ballinger Trust		7,912	7,912	7,912
Greggs Trust			0	15,000
Jos Strong Fraser Trust			0	1,000
Durham and Dundee Special Needs		55,914	55,914	
Durham County Council Moving on Up		24,645	24,645	
Durham County Council		56,447	56,447	191,795
	<u>0</u>	<u>215,673</u>	<u>215,673</u>	<u>215,707</u>

Income Generated from Activities

	Unrestricted	Restricted	Total 2022	Total 2021
Holiday Activities				
Other Activities		5,014	5,014	1,390
	<u>0</u>	<u>5,014</u>	<u>5,014</u>	<u>1,390</u>

Integrating Children

Notes forming part of the Financial Statements to 31st March 2022

3) Resources Expended

Direct Costs		2022	2021	
Holiday Activities		6,348		
Other Activities		24,305	6,217	
		<u>30,652</u>	<u>6,217</u>	
Staff Costs				
No employee earned more than £60,000 durin the year		112,305	59,094	
Average no. of employees (including those in direct costs)		<u>8</u>	<u>5</u>	
Administration	Unrestricted	Restricted	Total 2022	Total 2021
Rent		9,517	9,517	930
Insurance		404	404	421
Postage		80	80	0
Sundries		2,626	2,626	4,160
Equipment		3,510	3,510	0
Depreciation	2,201		2,201	2,812
	<u>2,201</u>	<u>16,137</u>	<u>18,337</u>	<u>8,323</u>

Integrating Children

Notes forming part of the Financial Statements to 31st March 2022

4) Trustees Remuneration and Related Party Transactions

No member of the management committee received any remuneration during the year.

5) Tangible Fixed Assets

	<u>Music & Office Equipment</u>	<u>Computer Equipment</u>	<u>Total</u>
Cost			
As at 1st April 2021	9,646	9,099	18,745
Additions			0
Disposals			0
As at 31st March 2022	<u>9,646</u>	<u>9,099</u>	<u>18,745</u>
Depreciation			
As at 1st April 2021	3,072	8,344	11,416
Charge for Year	1,447	754	2,201
Elimated on Disposal			0
As at 31st March 2022	<u>4,519</u>	<u>9,098</u>	<u>13,617</u>
NBV as at 31st March 2022	<u>5,127</u>	<u>1</u>	<u>5,128</u>
NBV as at 31st March 2021	<u>6,574</u>	<u>755</u>	<u>7,329</u>

6) Creditors

	2022	2021
Accounts	280	250
	<u>280</u>	<u>250</u>

Integrating Children

Notes forming part of the Financial Statements to 31st March 2022

7) Analysis of Net Assets between Funds

	General Funds	Restricted Funds	Total
Tangible Fixed Assets	5,128		5,128
Current Assets	33,746	230,950	264,696
Current Liabilities	(250)		(250)
	<u>38,624</u>	<u>230,950</u>	<u>269,574</u>

8) Movement of Funds

	As at 1st April 2021	Incoming Resources	Outgoing Resources	Transfers	As at 31st March 2022
Mains Grant Lottery	28,684	30,840	30,840		0
Ballinger Trust	5,900	7,912	13,812		0
Big Lottery Community Fund		10,000	10,000		0
Durham and Dundee Special Needs		55,914	23,364		32,550
Durham CC Moving on up		24,645	0		24,645
GMBC		29,915	29,915		0
Greggs Trust	12,500		12,500		0
Durham County Council	117,308	56,447	0		173,755
Jos Strong Fraser Trust	1,000	5,014	1,000		0
Activities	<u>3,323</u>		<u>3,323</u>		<u>0</u>
Total Restricted	<u>168,715</u>	<u>220,687</u>	<u>124,754</u>	<u>0</u>	<u>230,950</u>
Unrestricted Funds					0
General Funds (Capital)	7,339	7,082			14,421
General Funds (Revenue)	27,015	0	2,812		24,203
					<u>0</u>
General Funds	<u>34,354</u>	<u>7,082</u>	<u>2,812</u>	<u>0</u>	<u>38,624</u>
Total Funds	<u>203,069</u>	<u>227,769</u>	<u>127,566</u>	<u>0</u>	<u>269,574</u>

Transfer of Funds to Designated represents the increase in provision for redundancy

Transfer of funds from Capital to Revenue represents the depreciation charge for the year