

Integrating

England & Wales · Charity number 1090260

Details

Other names	INTEGRATING CHILDREN
Status	Registered
Legal form	Other
Registered	2002-01-25
Register	View on the Charity Commission register

Contact

Address Bullion Hall
South Approach
Chester le Street
Co Durham
DH2 2DW

Phone 07791800324

Email info@integrating.org.uk

Website www.integrating.org.uk

Activities

Objects: 1. TO PROMOTE THE RELIEF OF THE NEEDS OF CHILDREN AND YOUNG PEOPLE, PARTICULARLY THOSE WITH DISABILITIES, AND THEIR FAMILIES WITHIN COUNTY DURHAM AND ITS ENVIRONS, BY ENCOURAGING AND SUPPORTING INTEGRATED PLAY AND ACCESS TO MAINSTREAM LEISURE SERVICES, WITH THE OBJECT OF IMPROVING THEIR CONDITIONS OF LIFE AND2. THE PROVISION OF PRACTICAL SUPPORT AND ADVICE TO FAMILIES AND/OR CARERS OF SUCH CHILDREN AND YOUNG PEOPLE.

Activities: To improve the life experience and skills of 100 disabled people each year aged 4 to 30 years living in the Durham City and Chester le Street area by providing supported access to mainstream leisure and social activities within the community on a regular ongoing basis.

Classification

- **How:** Provides Human Resources, Provides Services
- **What:** General Charitable Purposes, Education/training, Disability, Amateur Sport, Recreation
- **Who:** Children/young People, People With Disabilities

Geography

- **Area of benefit:** COUNTY DURHAM AND ITS ENVIRONS
- Durham

Finances

Period end	Income	Expenditure	Assets	Employees
2025-03-31	£334,415	£388,629	-	-
2024-03-31	£302,370	£301,757	-	-
2023-03-31	£236,040	£237,479	-	-
2022-03-31	£220,687	£158,482	-	-
2021-03-31	£221,140	£73,634	-	-

Trustees

Name	Role	Appointed
RICHARD TAYLOR	Chair	
Alison White		2021-03-16
Andrea Lynne Etherington		2021-03-16
Benedict Corrigan		2023-07-15
Carole Lee		2023-07-15
Elizabeth Burns		2019-01-12
Jayne Oliver		2021-03-16
Julie Hanley		2023-07-15
Lynn Hindmarch		2025-07-05
Michael Lee		2023-07-15
Michael McGlone		2021-03-16
Paul Archer		2019-01-12
Sarah Warwick		2016-06-11
Susan Francis		2022-07-09

Integrating

England & Wales - Charity number 1090260

Accounts



Trustees' Annual Report for the period

From **01.04.24** Period start date To **31.03.25** Period end date

Charity name: Integrating

Charity registration number: 1090260

Objectives and Activities

	SORP reference	
Summary of the purposes of the charity as set out in its governing document	Para 1.17	The Charity's objects are: <ol style="list-style-type: none">1. To promote the social, emotional, mental and physical wellbeing of children, young people and adults (members) with disabilities within Durham and the surrounding area and provide respite for their families by supporting members' inclusivity in mainstream leisure services.2. To provide practical support and advice to families and/or carers for children, young people and adults with disabilities.
Summary of the main activities in relation to those purposes for the public benefit, in particular, the activities, projects or services identified in the accounts.	Para 1.17 and 1.19	Integrating works with over 100 disabled children, young people and adults aged 4 – 30 years, largely within the Durham City and Chester-le-Street area. The organisation: <ul style="list-style-type: none">• Promotes the social, emotional, mental and physical wellbeing of children, young people and adults with disabilities.• Supports disabled children, young people and adults to develop confidence, social skills, positive relationships and a support network within their community.• Helps members experience

fulfilling and rewarding lives through the participation in safe, but fun and enjoyable activities.

- **Assists members to develop their independence to operate effectively and confidently within their community.**
- **Enables members to make positive contributions to their community by engaging in skill development related to their interests and abilities and for some, contributing to the decision-making process within the organisation and developing their leadership skills.**
- **Enables members to make friends and develop positive, meaningful relationships.**
- **Helps families to feel supported to fulfil their caring responsibilities.**

This is achieved by supporting members to take part in the activities we arrange at their request.

Our activities include:

- **Gym club**
- **Visual Arts**
- **Music**
- **Ten pin bowling**
- **Virtual gaming**
- **Swimming**
- **Social Saturdays**
- **Online social activities e.g. family bingo**
- **Residential breaks**
- **Day trips**
- **'InterThinkers' Youth Forum**
- **Adult outreach 'Day Service' for members 16 and older**
- **Assessed Needs provision**
- **Volunteer development programme**

By involving members in mainstream activities, we can help them to build essential life skills such as:

		<ul style="list-style-type: none"> • self-confidence • social skills • the ability to engage with others across different situations • a sense of purpose to combat isolation and depression by reducing the negative effect of stress and/or anxiety <p>This is particularly important as at least half of our members have difficulties with social communication and interaction, and restricted interests which impacts their ability to socialise and form lasting friendships.</p> <p>Integrating seeks to develop emotional resilience and a support network through access to fun, but safe, structured, regular and familiar activities.</p> <p>In addition, Integrating:</p> <ul style="list-style-type: none"> • enables parents/carers to feel supported in fulfilling their caring responsibilities. • provides short breaks for families. • provides staff volunteering and working at Integrating every opportunity to gain experience for their future careers e.g. Social Care, Health Care, Social Work, Educational Psychology and Special Needs Education.
Statement confirming whether the trustees have had regard to the guidance issued by the Charity Commission on public benefit	Para 1.18	The Trustees have reviewed and have regard to the guidance issued by the Charity Commission on public benefit in the planning and provision of services and in their governance of the charity.

Additional information (optional)

You may choose to include further statements where relevant about:

	SORP reference	
Policy on grant making	Para 1.38	Integrating does not make grants to individuals although in exceptional circumstances, will support involvement in activities by paying or subsidising costs for families facing difficulties e.g. access to residential

		opportunities.
Policy on social investment including program related investment	Para 1.38	The organisation has no investments nor policy in relation to this. Due to the size of the organisation, it is highly unlikely that this will apply.
Contribution made by volunteers	Para 1.38	<p>Integrating values volunteers and has a small, but active, group of volunteers at all levels of the organisation:</p> <ul style="list-style-type: none"> • Trustees who have control over the management and administration of the charity e.g. fundraising, recruitment and managing senior staff • Volunteers who support staff in the delivery of services • Local volunteers who help with fundraising initiatives <p>Integrating believes that volunteering is beneficial to individuals' mental and physical health; it is a mutual exchange of time and skills. Integrating provides training, support and tangible appreciation of any voluntary activity.</p> <p>All volunteers who have contact with Integrating members, or who have access to sensitive information and decisions taken, have been recruited, DBS checked and inducted to a standard comparable to that of the recruitment of staff.</p>
Other		

Achievements and Performance

	SORP reference	
Summary of the main achievements of the charity, identifying the difference the charity's work has made to the circumstances of its beneficiaries and any wider benefits to society as a	Para 1.20	Attendance at Integrating activities has a positive impact on the social skills of members, achieved through the many and varied opportunities to engage with peers without the presence of parents and/or carers. This allows our members to develop positive relationships, increase their support network and make friends

whole.

on their own terms. This has been freely expressed by members in discussion with their support workers on many occasions. Our members value the fact the Integrating:

- allows them to make new friends and build positive relationships which are important for developing their own identity.
- enables them to build lasting friendships over prolonged periods. Children and young people with disabilities can often move in and out of services, but Integrating's long-term support allows lasting and meaningful friendships to be maintained.

Many of our members recognise that being involved with Integrating simply makes them feel better about themselves. This can be seen on many occasions where young people come to activities angry or frustrated from something that has happened to them at home or school. Through engagement with familiar and trusted support workers and with the help of their friends, any stress and/or feelings of negativity soon dissipate. Members have also told staff that they fully enjoy being independent, taking part in activities away from parents and carers.

Parents consistently echo our members' thoughts and are particularly appreciative of the opportunities their children and young people have to engage in fun, safe and rewarding activities with their own friends, but without the worry that can come from being a parent, especially when entrusting their disabled child or youngster to another person's care.

Such success has been achieved

		through the continuous hard work of Integrating's Trustees, staff, volunteers, partners and all the families who have played their part in making the charity run safely and in an enjoyable way.
--	--	--

Additional information (optional)

You may choose to include further statements where relevant about:

Achievements against objectives set	Para 1.41	Integrating offers an adult outreach service for over 16s who no longer attend full-time education. Integrating also offers a service to referrals from partner agencies based on individuals' assessed needs.
Performance of fundraising activities against objectives set	Para 1.41	Fundraising has been very positive with existing funders continuing to support Integrating's objectives.
Investment performance against objectives	Para 1.41	Not applicable
Other		

Financial Review

Review of the charity's financial position at the end of the period	Para 1.21	<p>Integrating achieved income of:</p> <ul style="list-style-type: none"> • Unrestricted: £90,120 • Restricted: £ 244,295 <p>Expenditure</p> <ul style="list-style-type: none"> • Unrestricted: £104,638 • Restricted: £283,991 <p>Brought forward</p> <ul style="list-style-type: none"> • Unrestricted: £39,070 • Restricted: £229,678 <p>Carried forward</p> <ul style="list-style-type: none"> • Unrestricted: £24,552 • Restricted: £189,9892 • Total £214,534
Statement explaining the policy for holding reserves stating why they are held	Para 1.22	Integrating holds a reserve of about £70,000 together with a dynamic financial management policy, which ensures there are sufficient funds to ensure the organisation can operate for a year on current grant/contract income. The charity has no long-term liabilities and has been able to operate on an income from diverse sources and payments dates for many years.
Amount of reserves held	Para 1.22	£70,000
Reasons for holding zero reserves	Para 1.22	Not applicable
Details of fund materially in deficit	Para 1.24	Not applicable
Explanation of any uncertainties about the charity continuing as a going concern	Para 1.23	Not applicable

Additional information (optional)

You may choose to include further statements where relevant about:

The charity's principal sources of funds (including any fundraising)	Para 1.47	<p>Local authority contracts 60%</p> <p>Independent trusts 35%</p> <p>Local fundraising/donations 5%</p>
		Not applicable

Investment policy and objectives including any social investment policy adopted	Para 1.46	
A description of the principal risks facing the charity	Para 1.46	<p>I. Insufficient fund to maintain the organisation</p> <ul style="list-style-type: none"> • Fundraising drives at least three times each year • Pursue all opportunities for funding <p>II. Lose full time posts</p> <ul style="list-style-type: none"> • Seek extension of funding
Other		

Structure, Governance and Management

Description of charity's trusts:		
Type of governing document (trust deed , royal charter)	Para 1.25	Constitution
How is the charity constituted? (e.g unincorporated association , CIO)	Para 1.25	Incorporated registered charity
Trustee selection methods including details of any constitutional provisions e.g. election to post or name of any person or body entitled to appoint one or more trustees	Para 1.25	<p>The constitution requires the membership to elect the full board of Trustees at the AGM each year.</p> <p>In reviewing the charity's selection methods, it has been agreed that:</p> <ol style="list-style-type: none"> I. The board will review the group's strengths and needs in February each year and any potential vacancies II. Publicly advertise and recruit for appropriately qualified candidates III. Confirm any new Trustees at AGM by membership.

Additional information (optional)

You may choose to include further statements where relevant about:

Policies and procedures adopted for the induction and training of trustees	Para 1.51	<p>Integrating provides a full induction to all new Trustees on appointment based largely around the Charity Commission advice and the constitution of the organisation. Periodic refresher training is provided for Trustees in both their role and operational matters such as safeguarding and the needs of children and young people with disabilities.</p>
The charity's organisational structure and any wider network with which the charity works	Para 1.51	<p>Integrating does not have structural links with other organisations but does have relationships with:</p> <ul style="list-style-type: none"> • Parents/carers – in partnership • Local authority – contractual • Local organisations – delivery partnership
Relationship with any related parties	Para 1.51	

Other		The charity's organisational structure

Reference and Administrative details

Charity name	Integrating
Other name the charity uses	Integrating Children and Young People
Registered charity number	1090260
Charity's principal address	Bullion Hall South Approach Chester-le-Street County Durham DH2 2DW

Names of the charity trustees who manage the charity

	Trustee name	Office (if any)	Dates acted if not for whole year	Name of person (or body) entitled to appoint trustee (if any)
1	Richard Taylor	Chair		Members
2	Sarah Warwick	Vice-Chair		Members
3	Michael McGlone	Treasurer		Members
4	Elizabeth Burns	Secretary		Members
5	Paul Archer			Members
6	Lynne Clark			Members
7	Benedict Corrigan			Members
8	Susan Francis			Members
9	Kimberley Handley			Members
10	Julie Hanley			Members
11	Lucy Hinds			Members
12	Carole Lee			Members
13	Michael Lee			Members
14	Jayne Oliver			Members
15	Alison White			Members
16				
17				
18				
19				
20				

Corporate trustees – names of the directors at the date the report was approved

Director name	Not applicable	

Name of trustees holding title to property belonging to the charity

Trustee name	Dates acted if not for whole year	
	Not applicable	

Funds held as custodian trustees on behalf of others

Description of the assets held in this capacity	Not applicable
Name and objects of the charity on whose behalf the assets are held and how this falls within the custodian charity's objects	Not applicable
Details of arrangements for safe custody and segregation of such assets from the charity's own assets	Not applicable

Additional information (optional)

Names and addresses of advisers (Optional information)

Type of adviser	Name	Address

Name of chief executive or names of senior staff members (Optional information)

David Gaudie- Project Manager
Ben Taylor – Assistant Project Manager
Kathryn Gaudie-Jones – Business manager

Exemptions from disclosure

Reason for non-disclosure of key personnel details

--

Other optional information


--

Declarations

The trustees declare that they have approved the trustees' report above.

Signed on behalf of the charity's trustees

Signature(s)

	
---	--

Full name(s)

Richard Taylor	
----------------	--

Position (eg Secretary,
Chair, etc)

Chair	
-------	--

Date

07.01.26

Integrating
Unaudited Financial Statements
31 March 2025

Integrating

Financial Statements

Year ended 31 March 2025

	Page
Trustees' annual report	1
Independent examiner's report to the trustees	5
Statement of financial activities	6
Statement of financial position	7
Notes to the financial statements	8

Integrating

Trustees' Annual Report

Year ended 31 March 2025

The trustees present their report and the unaudited financial statements of the charity for the year ended 31 March 2025.

Reference and administrative details

Registered charity name	Integrating
Charity registration number	1090260
Principal office	Bullion Hall South Approach Chester-le-street Co Durham DH2 2DW

The trustees

Richard Taylor	Chair
Sarah Warwick	Vice-Chair
Lynne Thompson	Treasurer
Paul Archer	
Elizabeth Burns	
Lynne Clark	
Benedict Corrigan	
Kimberley Handley	
Lucy Hinds	
Michael McGlone	
Jayne Oliver	
Alison White	

Senior Staff	David Gaudie	Project Manager
	Kathryn Gaudie- Jones	Business manager

Independent examiner	JFS Torbitt 58 Durham Road Birtley Co Durham DH3 2QJ
-----------------------------	--

Structure, governance and management

The constitution requires the membership to elect the full board of Trustees at the AGM each year.

In reviewing the charity's selection methods, it has been agreed that:

- The board will review the group's strengths and needs in February each year and any potential vacancies
- Publicly advertise and recruit for appropriately qualified candidates
- Confirm any new Trustees at AGM by membership

Integrating provides a full induction to all new Trustees on appointment based largely around the Charity Commission advice and the constitution of the organisation. Periodic refresher training is provided for Trustees in both their role and operational matters such as safeguarding and the needs of children and young people with disabilities.

Integrating

Trustees' Annual Report *(continued)*

Year ended 31 March 2025

Integrating does not have structural links with other organisations but does have relationships with:

- Parents/carers - in partnership
- Local authority - contractual
- Local organisations - delivery partnership

Objectives and activities

The Charity's objects are:

1. To promote the social, emotional, mental and physical wellbeing of children, young people and adults with disabilities within Durham and the surrounding area and provide respite for their families by supporting members' inclusivity in mainstream leisure services.
2. To provide practical support and advice to families and/or carers for children, young people and adults with disabilities.

Integrating (operating as Integrating) works with over 75 disabled children, young people and adults aged 5 - 30 years, largely within the Durham City and Chester-le-Street area.

The organisation:

- Promotes the social, emotional, mental and physical wellbeing of children, young people and adults with disabilities.
- Supports disabled children, young people and adults to develop confidence, social skills, positive relationships and a support network within their community.
- Helps members experience fulfilling and rewarding lives through the participation in safe, but fun and enjoyable activities.
- Assists members to develop their independence to operate effectively and confidently within their community.
- Enables members to make positive contributions to their community by engaging in skill development related to their interests and abilities and for some, contributing to the decision-making process within the organisation and developing their leadership skills.
- Enables members to make friends and develop positive, meaningful relationships. Helps families to feel supported to fulfil their caring responsibilities.

This is achieved by supporting members to take part in the activities we arrange at their request.

Our activities include:

- Gym club
 - Visual Arts
 - Music
 - Football training
 - Sportability
 - Ten pin bowling
 - Virtual gaming
 - Swimming
 - Social Saturdays
 - Online social activities e.g. family bingo
 - Residential breaks
 - Day trips
 - 'InterThinkers' Youth Forum
 - Adult outreach 'Day Service' for members 16 and older
 - Assessed Needs provision
 - Volunteer development programme
-

Integrating

Trustees' Annual Report *(continued)*

Year ended 31 March 2025

By involving members in mainstream activities, we can help them to build essential life skills such as:

- self-confidence
- social skills
- the ability to engage with others across different situations
- a sense of purpose to combat isolation and depression by reducing the negative effect of stress and/or anxiety

This is particularly important as at least half of our members have difficulties with social communication and interaction, and restricted interests which impacts their ability to socialise and form lasting relationships.

Integrating seeks to develop emotional resilience and a support network through access to fun, but safe, structured, regular and familiar activities.

In addition, Integrating:

- Enables parents/carers to feel supported in fulfilling their caring responsibilities.
- Provides short breaks for families.
- Provides staff volunteering and working at Integrating every opportunity to gain experience for their future careers e.g. Social Care, Health Care, Social Work, Educational Psychology and Special Needs Education.

The Trustees have reviews and have regard to the guidance issued by the Charity Commission on public benefit in the planning and provision of services and in their governance of the charity.

Achievements and performance

Attendance at Integrating activities has a positive impact on the social skills of members, achieved through the many and varied opportunities to engage with peers without the presence of parents and/or carers. This allows our members to develop positive relationships, increase their support network and make friends on their own terms. This has been freely expressed by members in discussion with their support workers on many occasions.

Our members value the fact integrating:

Allows them to make new friends and build positive relationships which are important for developing their own identity. Enables them to build lasting friendships over prolonged periods. Children and young people with disabilities can often move in and out of services, but Integrating's long-term support allows lasting and meaningful friendships to be maintained.

Many of the young people recognise that being involved with Integrating simply makes them feel better about themselves. This can be seen on many occasions where young people come to activities angry or frustrated from something that has happened to them at home or school. Through engagement with familiar and trusted support workers and with the help of their friends, any stress and/or feelings of negativity soon dissipate. Members have also told staff that they fully enjoy being independent, taking part in activities away from parents and carers.

Parents consistently echo our members' thoughts and are particularly appreciative of the opportunities their children and young people have to engage in fun, safe and rewarding activities with their own friends, but without the worry that can come from being a parent, especially when entrusting their disabled child or youngster to another person's care.

Such success has been achieved through the continuous hard work of Integrating's Trustees, staff, volunteers, partners and all the families who have played their part in making the charity run safely and in an enjoyable way.

Integrating offers an adult outreach service for over 16s who no longer attend full-time education.

Integrating

Trustees' Annual Report *(continued)*

Year ended 31 March 2025

Integrating also offers a service to referrals from partner agencies based on individuals' assessed needs.

Fundraising has been very positive with existing funders continuing to support Integrating's objectives.

Financial review

Integrating achieved income of:

Unrestricted: £90,120

Restricted: £244,295

Expenditure

Unrestricted: £105,377

Restricted: £283,991

Brought forward

Unrestricted: £39,070

Restricted: £229,678

Carried forward

Unrestricted: £23,813

Restricted: £189,982

Total: £213,795

Integrating holds a small reserve of about £30,000 together with a dynamic financial management policy, which ensure the organisation can operate for a year on current grant contract income. Whilst the charity would like to develop a reserve fund which would allow six month's operations, the trustees do not see there being a likelihood of being able to accrue this level of reserves in the foreseeable future. The charity has not long-term liabilities and has been able to operate on an income from diverse sources and payments dates for many years.

The trustees' annual report was approved on 27/09/2025 and signed on behalf of the board of trustees by:



Richard Taylor
Trustee

Integrating

Independent Examiner's Report to the Trustees of Integrating

Year ended 31 March 2025

I report to the trustees on my examination of the financial statements of Integrating ('the charity') for the year ended 31 March 2025.

Responsibilities and basis of report

As the trustees of the charity you are responsible for the preparation of the financial statements in accordance with the requirements of the Charities Act 2011 ('the Act').

I report in respect of my examination of the charity's financial statements carried out under section 145 of the 2011 Act and in carrying out my examination I have followed all the applicable Directions given by the Charity Commission under section 145(5)(b) of the Act.

Independent examiner's statement

Since the charity's gross income exceeded £250,000 your examiner must be a member of a body listed in section 145 of the 2011 Act. I confirm that I am qualified to undertake the examination because I am a member of the Association of Chartered Certified Accountants, which is one of the listed bodies.

I have completed my examination. I confirm that no material matters have come to my attention in connection with the examination giving me cause to believe that in any material respect:

1. accounting records were not kept in respect of the charity as required by section 130 of the Act; or
2. the financial statements do not accord with those records; or
3. the financial statements do not comply with the applicable requirements concerning the form and content of accounts set out in the Charities (Accounts and Reports) Regulations 2008 other than any requirement that the accounts give a 'true and fair' view which is not a matter considered as part of an independent examination.

I have no concerns and have come across no other matters in connection with the examination to which attention should be drawn in this report in order to enable a proper understanding of the accounts to be reached.

Jane Freeman

FCCA

Independent Examiner

58 Durham Road

Birtley

Co Durham

DH3 2QJ

Integrating

Statement of Financial Activities

Year ended 31 March 2025

		Unrestricted funds	2025 Restricted funds	Total funds	2024 Total funds
	Note	£	£	£	£
Income					
Donations and grants	4	9,279	200,560	209,839	201,107
Other trading activities	5	80,841	43,735	124,576	101,263
Total income		<u>90,120</u>	<u>244,295</u>	<u>334,415</u>	<u>302,370</u>
Expenditure					
Expenditure on raising funds:					
Costs of raising donations, grants and trading activities	6	104,038	283,991	388,029	301,507
Governance	7	600	–	600	250
Total expenditure		<u>104,638</u>	<u>283,991</u>	<u>388,629</u>	<u>301,757</u>
Net (expenditure)/income and net movement in funds		<u>(14,518)</u>	<u>(39,696)</u>	<u>(54,214)</u>	<u>613</u>
Reconciliation of funds					
Total funds brought forward		<u>39,070</u>	<u>229,678</u>	<u>268,748</u>	<u>268,135</u>
Total funds carried forward		<u>24,552</u>	<u>189,982</u>	<u>214,534</u>	<u>268,748</u>

The statement of financial activities includes all gains and losses recognised in the year. All income and expenditure derive from continuing activities.

The notes on pages 8 to 14 form part of these financial statements.

Integrating

Statement of Financial Position

31 March 2025

	Note	2025 £	2024 £
Fixed assets			
Tangible fixed assets	12	786	2,234
Current assets			
Cash at bank and in hand		218,338	266,764
Creditors: amounts falling due within one year	13	(4,590)	(250)
Net current assets		<u>213,748</u>	<u>266,514</u>
Total assets less current liabilities		<u>214,534</u>	<u>268,748</u>
Net assets		<u>214,534</u>	<u>268,748</u>
Funds of the charity			
Restricted funds		189,982	229,678
Unrestricted funds:			
Capital		786	2,234
Revenue		<u>23,766</u>	<u>36,836</u>
		<u>24,552</u>	<u>39,070</u>
Total charity funds	14	<u>214,534</u>	<u>268,748</u>

These financial statements were approved by the board of trustees and authorised for issue on 27/09/2025, and are signed on behalf of the board by:



Richard Taylor
Trustee

The notes on pages 8 to 14 form part of these financial statements.

Integrating

Notes to the Financial Statements

Year ended 31 March 2025

1. General information

The charity is a public benefit entity and a registered charity in England and Wales and is unincorporated. The address of the principal office is Bullion Hall, South Approach, Chester-le-Steet, County Durham, DH2 2DW.

2. Statement of compliance

These financial statements have been prepared in compliance with FRS 102, 'The Financial Reporting Standard applicable in the UK and the Republic of Ireland', the Statement of Recommended Practice applicable to charities preparing their accounts in accordance with the Financial Reporting Standard applicable in the UK and Republic of Ireland (FRS 102) (Charities SORP (FRS 102)) and the Charities Act 2011.

3. Accounting policies

Basis of preparation

The financial statements have been prepared on the historical cost basis, as modified by the revaluation of certain financial assets and liabilities and investment properties measured at fair value through income or expenditure.

The financial statements are prepared in sterling, which is the functional currency of the entity.

Going concern

There are no material uncertainties about the charity's ability to continue.

Fund accounting

Unrestricted funds are available for use at the discretion of the trustees to further any of the charity's purposes.

Designated funds are unrestricted funds earmarked by the trustees for particular future project or commitment.

Restricted funds are subjected to restrictions on their expenditure declared by the donor or through the terms of an appeal, and fall into one of two sub-classes: restricted income funds or endowment funds.

Integrating

Notes to the Financial Statements *(continued)*

Year ended 31 March 2025

3. Accounting policies *(continued)*

Incoming resources

All incoming resources are included in the statement of financial activities when entitlement has passed to the charity; it is probable that the economic benefits associated with the transaction will flow to the charity and the amount can be reliably measured. The following specific policies are applied to particular categories of income:

- income from donations or grants is recognised when there is evidence of entitlement to the gift, receipt is probable and its amount can be measured reliably.
- legacy income is recognised when receipt is probable and entitlement is established.
- income from donated goods is measured at the fair value of the goods unless this is impractical to measure reliably, in which case the value is derived from the cost to the donor or the estimated resale value. Donated facilities and services are recognised in the accounts when received if the value can be reliably measured. No amounts are included for the contribution of general volunteers.
- income from contracts for the supply of services is recognised with the delivery of the contracted service. This is classified as unrestricted funds unless there is a contractual requirement for it to be spent on a particular purpose and returned if unspent, in which case it may be regarded as restricted.

Resources expended

Expenditure is recognised on an accruals basis as a liability is incurred. Expenditure includes any VAT which cannot be fully recovered, and is classified under headings of the statement of financial activities to which it relates:

- expenditure on raising funds includes the costs of all fundraising activities, events, non-charitable trading activities, and the sale of donated goods.
- expenditure on charitable activities includes all costs incurred by a charity in undertaking activities that further its charitable aims for the benefit of its beneficiaries, including those support costs and costs relating to the governance of the charity apportioned to charitable activities.
- other expenditure includes all expenditure that is neither related to raising funds for the charity nor part of its expenditure on charitable activities.

All costs are allocated to expenditure categories reflecting the use of the resource. Direct costs attributable to a single activity are allocated directly to that activity. Shared costs are apportioned between the activities they contribute to on a reasonable, justifiable and consistent basis.

Tangible assets

Tangible assets are initially recorded at cost, and subsequently stated at cost less any accumulated depreciation and impairment losses. Any tangible assets carried at revalued amounts are recorded at the fair value at the date of revaluation less any subsequent accumulated depreciation and subsequent accumulated impairment losses.

Integrating

Notes to the Financial Statements *(continued)*

Year ended 31 March 2025

3. Accounting policies *(continued)*

Tangible assets *(continued)*

An increase in the carrying amount of an asset as a result of a revaluation, is recognised in other recognised gains and losses, unless it reverses a charge for impairment that has previously been recognised as expenditure within the statement of financial activities. A decrease in the carrying amount of an asset as a result of revaluation, is recognised in other recognised gains and losses, except to which it offsets any previous revaluation gain, in which case the loss is shown within other recognised gains and losses on the statement of financial activities.

Depreciation

Depreciation is calculated so as to write off the cost or valuation of an asset, less its residual value, over the useful economic life of that asset as follows:

Music & Office Equipment	-	15% straight line
Computer Equipment	-	15% straight line

4. Donations and grants

	Unrestricted Funds £	Restricted Funds £	Total Funds 2025 £
Donations			
Fundraising and donations	9,279	–	9,279
Grants			
Durham and Dundee Special Needs	–	54,820	54,820
Durham County Council	–	45,233	45,233
GMBC	–	68,924	68,924
Ballinger Trust	–	15,000	15,000
Big Lottery Mains Grant	–	16,583	16,583
	<u>9,279</u>	<u>200,560</u>	<u>209,839</u>
	Unrestricted Funds £	Restricted Funds £	Total Funds 2024 £
Donations			
Fundraising and donations	8,567	–	8,567
Grants			
Big Lottery Mains Grant	–	16,583	16,583
GMBC	–	31,287	31,287
Ballinger Trust	–	25,000	25,000
Greggs Trust	–	20,000	20,000
Joseph Strong	–	1,000	1,000
Durham and Dundee Special Needs	–	27,733	27,733
Karbon Homes	–	846	846
Sports Foundation	–	500	500
Durham County Council	–	69,591	69,591
	<u>8,567</u>	<u>192,540</u>	<u>201,107</u>

Integrating

Notes to the Financial Statements *(continued)*

Year ended 31 March 2025

5. Other trading activities

	Unrestricted Funds £	Restricted Funds £	Total Funds 2025 £
Day Service Users	80,841	–	80,841
Holiday Activities	–	27,870	27,870
Other Activities	–	15,865	15,865
	<u>80,841</u>	<u>43,735</u>	<u>124,576</u>

	Unrestricted Funds £	Restricted Funds £	Total Funds 2024 £
Day Service Users	71,252	–	71,252
Holiday Activities	–	15,880	15,880
Other Activities	–	14,131	14,131
	<u>71,252</u>	<u>30,011</u>	<u>101,263</u>

6. Costs of raising donations, grants and trading activities

	Unrestricted Funds £	Restricted Funds £	Total Funds 2025 £
Direct costs			
Holiday Activities	–	14,828	14,828
Other Activities	–	57,317	57,317
Staff costs	69,581	211,846	281,427
Administration			
Rent	18,116	–	18,116
Insurance	409	–	409
Office costs	6,883	–	6,883
Sundries	419	–	419
Equipment	6,598	–	6,598
Depreciation	1,448	–	1,448
Bank charges	584	–	584
	<u>104,038</u>	<u>283,991</u>	<u>388,029</u>

	Unrestricted Funds £	Restricted Funds £	Total Funds 2024 £
Direct costs			
Holiday Activities	–	5,418	5,418
Other Activities	–	70,459	70,459
Staff costs	53,670	146,674	200,344
Administration			
Rent	14,400	–	14,400
Insurance	404	–	404
Sundries	2,329	–	2,329
Equipment	6,706	–	6,706
Depreciation	1,447	–	1,447
	<u>78,956</u>	<u>222,551</u>	<u>301,507</u>

Integrating

Notes to the Financial Statements *(continued)*

Year ended 31 March 2025

7. Governance costs

	Unrestricted Funds £	Total Funds 2025 £	Unrestricted Funds £	Total Funds 2024 £
Support costs	<u>600</u>	<u>600</u>	<u>250</u>	<u>250</u>

8. Net (expenditure)/income

Net (expenditure)/income is stated after charging/(crediting):

	2025 £	2024 £
Depreciation of tangible fixed assets	<u>1,448</u>	<u>1,448</u>

9. Independent examination fees

	2025 £	2024 £
Fees payable to the independent examiner for: Independent examination of the financial statements	<u>600</u>	<u>250</u>

10. Staff costs

The total staff costs and employee benefits for the reporting period are analysed as follows:

	2025 £	2024 £
Wages and salaries	<u>281,428</u>	<u>200,344</u>

The average head count of employees during the year was 20 (2024: 10).

No employee received employee benefits of more than £60,000 during the year (2024: Nil).

11. Trustee remuneration and expenses

No remuneration or other benefits from employment with the charity or a related entity were received by the Trustees.

12. Tangible fixed assets

	Music & Office Equipment £	Computer Equipment £	Total £
Cost			
At 1 April 2024 and 31 March 2025	<u>9,646</u>	<u>9,099</u>	<u>18,745</u>
Depreciation			
At 1 April 2024	7,413	9,098	16,511
Charge for the year	<u>1,447</u>	<u>1</u>	<u>1,448</u>
At 31 March 2025	<u>8,860</u>	<u>9,099</u>	<u>17,959</u>
Carrying amount			
At 31 March 2025	<u>786</u>	<u>–</u>	<u>786</u>
At 31 March 2024	<u>2,233</u>	<u>1</u>	<u>2,234</u>

Integrating

Notes to the Financial Statements *(continued)*

Year ended 31 March 2025

13. Creditors: amounts falling due within one year

	2025	2024
	£	£
Trade creditors	757	–
Accruals and deferred income	600	250
Social security and other taxes	3,234	–
	<u>4,591</u>	<u>250</u>

14. Analysis of charitable funds

Unrestricted funds

	At			At
	1 April 2024	Income	Expenditure	31 March 2025
	£	£	£	£
General funds (Capital)	2,234	–	(1,448)	786
General funds (Revenue)	36,836	90,120	(103,190)	23,766
	<u>39,070</u>	<u>90,120</u>	<u>(104,638)</u>	<u>24,552</u>

	At			At
	1 April 2023	Income	Expenditure	31 March 2024
	£	£	£	£
General funds (Capital)	3,681	–	(1,447)	2,234
General funds (Revenue)	34,776	79,819	(77,759))	36,836
	<u>38,457</u>	<u>79,819</u>	<u>(79,206)</u>	<u>39,070</u>

Restricted funds

	At			At
	1 April 2024	Income	Expenditure	31 March 2025
	£	£	£	£
Durham Special Needs	27,773	54,820	(60,223)	22,370
Durham County Council	201,905	45,233	(79,526)	167,622
GMBC	–	68,924	(68,924)	–
Ballinger Trust	–	15,000	(15,000)	–
Big Lottery	–	16,583	(16,583)	–
Activities	–	43,735	(43,735)	–
	<u>229,678</u>	<u>244,295</u>	<u>(283,991)</u>	<u>189,982</u>

Integrating

Notes to the Financial Statements *(continued)*

Year ended 31 March 2025

14. Analysis of charitable funds *(continued)*

Restricted funds	At	Income	Expenditure	At
	1 April 2023			31 March 2024
	£	£	£	£
Durham Special Needs	32,550	27,773	(32,550)	27,773
Ballinger Trust	–	25,000	(25,000)	–
GMBC	–	31,287	(31,287)	–
Big Lottery	–	16,583	(16,583)	–
Greggs Trust	–	20,000	(20,000)	–
Durham County Council	197,127	69,551	(64,763)	201,915
Joseph Strong	–	1,000	(1,000)	–
Other	–	1,346	(1,346)	–
Activities	–	30,011	(30,011)	–
	<u>229,678</u>	<u>222,551</u>	<u>(222,551)</u>	<u>229,678</u>

15. Analysis of net assets between funds

	Unrestricted Funds	Restricted Funds	Total Funds
	£	£	2025
	£	£	£
Tangible fixed assets	786	–	786
Current assets	28,356	189,982	218,338
Creditors less than 1 year	(4,590)	–	(4,590)
Net assets	<u>25,552</u>	<u>189,982</u>	<u>214,534</u>

	Unrestricted Funds	Restricted Funds	Total Funds
	£	£	2024
	£	£	£
Tangible fixed assets	2,234	–	2,234
Current assets	37,076	229,688	266,764
Creditors less than 1 year	(250)	–	(250)
Net assets	<u>38,456</u>	<u>229,688</u>	<u>268,748</u>

Integrating

Trustees' Annual Report *(continued)*

Year ended 31 March 2025

By involving members in mainstream activities, we can help them to build essential life skills such as:

- self-confidence
- social skills
- the ability to engage with others across different situations
- a sense of purpose to combat isolation and depression by reducing the negative effect of stress and/or anxiety

This is particularly important as at least half of our members have difficulties with social communication and interaction, and restricted interests which impacts their ability to socialise and form lasting relationships.

Integrating seeks to develop emotional resilience and a support network through access to fun, but safe, structured, regular and familiar activities.

In addition, Integrating:

- Enables parents/carers to feel supported in fulfilling their caring responsibilities.
- Provides short breaks for families.
- Provides staff volunteering and working at Integrating every opportunity to gain experience for their future careers e.g. Social Care, Health Care, Social Work, Educational Psychology and Special Needs Education.

The Trustees have reviews and have regard to the guidance issued by the Charity Commission on public benefit in the planning and provision of services and in their governance of the charity.

Achievements and performance

Attendance at Integrating activities has a positive impact on the social skills of members, achieved through the many and varied opportunities to engage with peers without the presence of parents and/or carers. This allows our members to develop positive relationships, increase their support network and make friends on their own terms. This has been freely expressed by members in discussion with their support workers on many occasions.

Our members value the fact integrating:

Allows them to make new friends and build positive relationships which are important for developing their own identity. Enables them to build lasting friendships over prolonged periods. Children and young people with disabilities can often move in and out of services, but Integrating's long-term support allows lasting and meaningful friendships to be maintained.

Many of the young people recognise that being involved with Integrating simply makes them feel better about themselves. This can be seen on many occasions where young people come to activities angry or frustrated from something that has happened to them at home or school. Through engagement with familiar and trusted support workers and with the help of their friends, any stress and/or feelings of negativity soon dissipate. Members have also told staff that they fully enjoy being independent, taking part in activities away from parents and carers.

Parents consistently echo our members' thoughts and are particularly appreciative of the opportunities their children and young people have to engage in fun, safe and rewarding activities with their own friends, but without the worry that can come from being a parent, especially when entrusting their disabled child or youngster to another person's care.

Such success has been achieved through the continuous hard work of Integrating's Trustees, staff, volunteers, partners and all the families who have played their part in making the charity run safely and in an enjoyable way.

Integrating

England & Wales - Charity number 1090260

Accounts



Trustees' Annual Report for the period

From 01.04.23 Period start date To 31.03.24 Period end date

Charity name: Integrating Children (known as Integrating)

Charity registration number: 1090260

Objectives and Activities

	SORP reference	
Summary of the purposes of the charity as set out in its governing document	Para 1.17	The Charity's objects are: <ol style="list-style-type: none">1. To promote the social, emotional, mental and physical wellbeing of children, young people and adults with disabilities within Durham and the surrounding area and provide respite for their families by supporting members' inclusivity in mainstream leisure services.2. To provide practical support and advice to families and/or carers for children, young people and adults with disabilities.
Summary of the main activities in relation to those purposes for the public benefit, in particular, the activities, projects or services identified in the accounts.	Para 1.17 and 1.19	Integrating works with over 75 disabled children, young people and adults aged 5 – 30 years, largely within the Durham City and Chester-le-Street area. The organisation: <ul style="list-style-type: none">• Promotes the social, emotional, mental and physical wellbeing of children, young people and adults with disabilities.• Supports disabled children, young people and adults to develop confidence, social skills, positive relationships and a support network within their community.

- **Helps members experience fulfilling and rewarding lives through the participation in safe, but fun and enjoyable activities.**
- **Assists members to develop their independence to operate effectively and confidently within their community.**
- **Enables members to make positive contributions to their community by engaging in skill development related to their interests and abilities and for some, contributing to the decision-making process within the organisation and developing their leadership skills.**
- **Enables members to make friends and develop positive, meaningful relationships.**
- **Helps families to feel supported to fulfil their caring responsibilities.**

This is achieved by supporting members to take part in the activities we arrange at their request.

Our activities include:

- **Gym club**
- **Visual Arts**
- **Music**
- **Football training**
- **Sportability**
- **Ten pin bowling**
- **Virtual gaming**
- **Swimming**
- **Social Saturdays**
- **Online social activities e.g. family bingo**
- **Residential breaks**
- **Day trips**
- **'InterThinkers' Youth Forum**
- **Adult outreach 'Day Service' for members 16 and older**
- **Assessed Needs provision**
- **Volunteer development programme**

		<p>By involving members in mainstream activities, we can help them to build essential life skills such as:</p> <ul style="list-style-type: none"> • self-confidence • social skills • the ability to engage with others across different situations • a sense of purpose to combat isolation and depression by reducing the negative effect of stress and/or anxiety <p>This is particularly important as at least half of our members have difficulties with social communication and interaction, and restricted interests which impacts their ability to socialise and form lasting friendships.</p> <p>Integrating seeks to develop emotional resilience and a support network through access to fun, but safe, structured, regular and familiar activities.</p> <p>In addition, Integrating:</p> <ul style="list-style-type: none"> • enables parents/carers to feel supported in fulfilling their caring responsibilities. • provides short breaks for families. • provides staff volunteering and working at Integrating every opportunity to gain experience for their future careers e.g. Social Care, Health Care, Social Work, Educational Psychology and Special Needs Education.
<p>Statement confirming whether the trustees have had regard to the guidance issued by the Charity Commission on public benefit</p>	<p>Para 1.18</p>	<p>The Trustees have reviewed and have regard to the guidance issued by the Charity Commission on public benefit in the planning and provision of services and in their governance of the charity.</p>

Additional information (optional)

You may choose to include further statements where relevant about:

	SORP reference	
Policy on grant making	Para 1.38	Integrating does not make grants to individuals although in exceptional circumstances, will support involvement in activities by paying or subsidising costs for families facing difficulties e.g. access to residential opportunities.
Policy on social investment including program related investment	Para 1.38	The organisation has no investments nor policy in relation to this. Due to the size of the organisation, it is highly unlikely that this will apply.
Contribution made by volunteers	Para 1.38	<p>Integrating values volunteers and has a small, but active, group of volunteers at all levels of the organisation:</p> <ul style="list-style-type: none"> • Trustees who have control over the management and administration of the charity e.g. fundraising, recruitment and managing senior staff • Volunteers who support staff in the delivery of services • Local volunteers who help with fundraising initiatives <p>Integrating believes that volunteering is beneficial to individuals' mental and physical health; it is a mutual exchange of time and skills. Integrating provides training, support and tangible appreciation of any voluntary activity.</p> <p>All volunteers who have contact with Integrating members, or who have access to sensitive information and decisions taken, have been recruited, DBS checked and inducted to a standard comparable to that of the recruitment of staff.</p>
Other		

Achievements and Performance

	SORP reference	
<p>Summary of the main achievements of the charity, identifying the difference the charity's work has made to the circumstances of its beneficiaries and any wider benefits to society as a whole.</p>	<p>Para 1.20</p>	<p>Attendance at Integrating activities has a positive impact on the social skills of members, achieved through the many and varied opportunities to engage with peers without the presence of parents and/or carers. This allows our members to develop positive relationships, increase their support network and make friends on their own terms. This has been freely expressed by members in discussion with their support workers on many occasions. Our members value the fact the Integrating:</p> <ul style="list-style-type: none"> • allows them to make new friends and build positive relationships which are important for developing their own identity. • enables them to build lasting friendships over prolonged periods. Children and young people with disabilities can often move in and out of services, but Integrating's long-term support allows lasting and meaningful friendships to be maintained. <p>Many of the young people recognise that being involved with Integrating simply makes them feel better about themselves. This can be seen on many occasions where young people come to activities angry or frustrated from something that has happened to them at home or school. Through engagement with familiar and trusted support workers and with the help of their friends, any stress and/or feelings of negativity soon dissipate. Members have also told staff that they fully enjoy being independent, taking part in activities away from parents and carers.</p>

		<p>Parents consistently echo our members' thoughts and are particularly appreciative of the opportunities their children and young people have to engage in fun, safe and rewarding activities with their own friends, but without the worry that can come from being a parent, especially when entrusting their disabled child or youngster to another person's care.</p> <p>Such success has been achieved through the continuous hard work of Integrating's Trustees, staff, volunteers, partners and all the families who have played their part in making the charity run safely and in an enjoyable way.</p>
--	--	--

Additional information (optional)

You may choose to include further statements where relevant about:

Achievements against objectives set	Para 1.41	<p>Integrating offers an adult outreach service for over 16s who no longer attend full-time education.</p> <p>Integrating also offers a service to referrals from partner agencies based on individuals' assessed needs.</p>
Performance of fundraising activities against objectives set	Para 1.41	<p>Fundraising has been very positive with existing funders continuing to support Integrating's objectives.</p>
Investment performance against objectives	Para 1.41	<p>Not applicable</p>
Other		

Financial Review

<p>Review of the charity's financial position at the end of the period</p>	<p>Para 1.21</p>	<p>Integrating achieved income of:</p> <ul style="list-style-type: none"> • Unrestricted: £3,550 • Restricted: £ 232,490 <p>Expenditure</p> <ul style="list-style-type: none"> • Unrestricted: £3,748 • Restricted: £230,919 <p>Brought forward</p> <ul style="list-style-type: none"> • Unrestricted: £38,655 • Restricted: £229,678 <p>Carried forward</p> <ul style="list-style-type: none"> • Unrestricted: £38,457 • Restricted: £229,678 • Total £268,135
<p>Statement explaining the policy for holding reserves stating why they are held</p>	<p>Para 1.22</p>	<p>Integrating holds a reserve of about £30,000 together with a dynamic financial management policy, which ensures there are sufficient funds to ensure the organisation can operate for a year on current grant/contract income. However, the charity intends to increase the reserve to £70,000. The charity has no long-term liabilities and has been able to operate on an income from diverse sources and payments dates for many years.</p>
<p>Amount of reserves held</p>	<p>Para 1.22</p>	<p>£30,000</p>
<p>Reasons for holding zero reserves</p>	<p>Para 1.22</p>	<p>Not applicable</p>
<p>Details of fund materially in deficit</p>	<p>Para 1.24</p>	<p>Not applicable</p>
<p>Explanation of any uncertainties about the charity continuing as a going concern</p>	<p>Para 1.23</p>	<p>Not applicable</p>

Additional information (optional)

You may choose to include further statements where relevant about:

The charity's principal sources of funds (including any fundraising)	Para 1.47	Local authority contracts 60% Independent trusts and other funders 35% Local fundraising/donations 5%
Investment policy and objectives including any social investment policy adopted	Para 1.46	Not applicable
A description of the principal risks facing the charity	Para 1.46	I. Insufficient fund to maintain the organisation <ul style="list-style-type: none">• Fundraising drives at least three times each year• Pursue all opportunities for funding II. Lose full time posts <ul style="list-style-type: none">• Seek extension of funding
Other		

Structure, Governance and Management

Description of charity's trusts:		
Type of governing document (trust deed, royal charter)	Para 1.25	Constitution
How is the charity constituted? (e.g unincorporated association, CIO)	Para 1.25	Incorporated registered charity
Trustee selection methods including details of any constitutional provisions e.g. election to post or name of any person or body entitled to appoint one or more trustees	Para 1.25	<p>The constitution requires the membership to elect the full board of Trustees at the AGM each year.</p> <p>In reviewing the charity's selection methods, it has been agreed that:</p> <ol style="list-style-type: none"> I. The board will review the group's strengths and needs in February each year and any potential vacancies II. Publicly advertise and recruit for appropriately qualified candidates III. Confirm any new Trustees at AGM by membership.

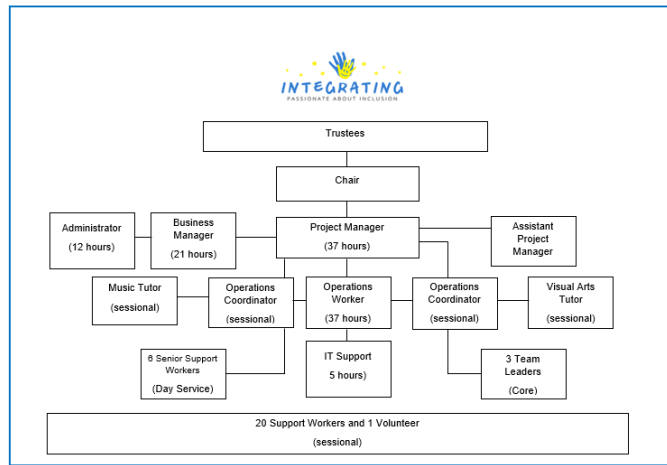
Additional information (optional)

You may choose to include further statements where relevant about:

Policies and procedures adopted for the induction and training of trustees	Para 1.51	<p>Integrating provides a full induction to all new Trustees on appointment based largely around the Charity Commission advice and the constitution of the organisation. Periodic refresher training is provided for Trustees in both their role and operational matters such as safeguarding and the needs of children and young people with disabilities.</p>
The charity's organisational structure and any wider network with which the charity works	Para 1.51	<p>Integrating does not have structural links with other organisations but does have relationships with:</p> <ul style="list-style-type: none"> • Parents/carers – in partnership • Local authority – contractual • Local organisations – delivery partnership
Relationship with any related parties	Para 1.51	

Other

The charity's organisational structure



Reference and Administrative details

Charity name	Integrating
Other name the charity uses	Integrating Children and Young People (previous name)
Registered charity number	1090260
Charity's principal address	Bullion Hall South Approach Chester-le-Street County Durham DH2 2DW

Names of the charity trustees who manage the charity

	Trustee name	Office (if any)	Dates acted if not for whole year	Name of person (or body) entitled to appoint trustee (if any)
1	Richard Taylor	Chair		Members
2	Sarah Warwick	Vice-Chair		Members
3	Michael McGlone	Treasurer		Members
4	Paul Archer			Members
5	Elizabeth Burns			Members
6	Lynne Clark			Members
7	Benedict Corrigan			Members
8	Kimberley Handley			Members
9	Lucy Hinds			Members
10	Michael McGlone			Members
11	Jayne Oliver			Members
12	Alison White			Members
13				
14				
15				
16				
17				
18				
19				
20				

Corporate trustees – names of the directors at the date the report was approved

Director name	Not applicable	

Name of trustees holding title to property belonging to the charity

Trustee name	Dates acted if not for whole year	
	Not applicable	

Funds held as custodian trustees on behalf of others

Description of the assets held in this capacity	Not applicable
Name and objects of the charity on whose behalf the assets are held and how this falls within the custodian charity's objects	Not applicable
Details of arrangements for safe custody and segregation of such assets from the charity's own assets	Not applicable

Additional information (optional)

Names and addresses of advisers (Optional information)

Type of adviser	Name	Address
-----------------	------	---------

Name of chief executive or names of senior staff members (Optional information)

David Gaudie- Project Manager
Ben Taylor – Assistant Project Manager
Kathryn Gaudie-Jones – Business manager

Exemptions from disclosure

Reason for non-disclosure of key personnel details

--

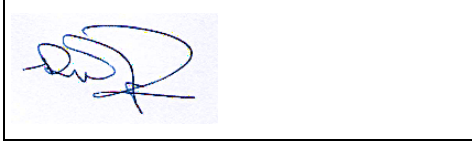
Other optional information

--

Declarations

The trustees declare that they have approved the trustees' report above.

Signed on behalf of the charity's trustees

Signature(s)		
Full name(s)	Richard William Taylor	
Position (eg Secretary, Chair, etc)	Chair	
Date	13 th December 2024	

Integrating Children

**Financial Statements for the Period ended
31st March 2024**

Charity No: 1090260

Community Accounting CIC

Integrating Children

CONTENTS

Statement of Financial Activities

Balance Sheet

Notes to the Financial Statements

Integrating Children

Statement of Financial Activities (including Income & Expenditure Account) For the Year ended 31st March 2024

	Unrestricted Funds 2024 £	Restricted Funds 2024 £	Total Funds 2024 £	Total Funds 2023 £
Incoming Resources				
Fund Raising and Donations	8,567		8,567	3,550
Grants		192,540	192,540	204,784
Income generated from Activities	71,252	30,011	101,263	27,706
Interest Received	0		0	0
Other Income	0		0	0
Total Incoming Resources	79,819	222,551	302,370	236,040
Resources Expended				
Direct Costs		75,877	75,877	49,254
Staffing Costs	53,670	146,674	200,344	169,298
Administration	25,536		25,536	18,927
Total Resources Expended	79,206	222,551	301,757	237,479
Net Incoming Resources	613	0	613	(1,439)
Transfer between Funds	0	0		
Total Funds Brought Forward	38,457	229,678	268,135	269,574
Total Funds Carried Forward	39,070	229,678	268,748	268,135

Integrating Children

Balance Sheet as at 31st March 2024

	2024 £	2023 £
Fixed Assets		
Tangible Fixed Assets	2,234	3,681
Current Assets		
Debtors		
Cash at Bank and in Hand	<u>266,764</u>	<u>264,703</u>
	266,764	264,703
Less		
Current Liabilities		
(Payable within one year)		
Accruals	<u>250</u>	<u>250</u>
Net Current Assets	266,514	264,453
Net Assets	<u>268,748</u>	<u>268,134</u>
Funded by		
Unrestricted Funds		
General		
Capital	2,234	3,681
Revenue	<u>36,836</u>	<u>34,776</u>
	39,070	38,457
Restricted Funds	229,678	229,678
Total Funds	<u>268,748</u>	<u>268,135</u>

Approved



Richard Taylor, Chair

Date 6th July 2024.

Integrating Children

Notes forming part of the Financial Statements to 31st March 2024

1) Accounting Policies

The principal accounting policies are summarised below. The accounting policies have been applied consistently throughout the year and in the preceding year.

a) **Basis of accounting**

The financial statements have been prepared under the historical cost convention in accordance with the Statement of Recommended Practice: Accounting and Reporting by Charities issued in March 2005.

b) **Revenue Grants**

Gross amount received as recognised within incoming resources and corresponding expense is shown with outgoing resources

c) **Taxation**

The charity is registered and exempt from taxation on its charitable activities

d) **Fixed Assets**

Fixed assets are stated at cost less accumulated depreciation. Depreciation is provided at rates calculated to write off the cost of each asset over its expected useful life.

Music and Office Equipment	15% Straight Line
Computer Equipment	15% Straight Line

Integrating Children

Notes forming part of the Financial Statements to 31st March 2024

2) Incoming Resources

Grants	Unrestricted	Restricted	Total 2024	Total 2023
Big Lottery Mains Grant		16,583	16,583	33,166
GMBC		31,287	31,287	46,480
Ballinger Trust		25,000	25,000	8,000
Big Lottery Community Fund			0	6,424
Greggs Trust		20,000	20,000	20,000
Joseph Strong		1,000	1,000	1,000
Durham and Dundee Special Needs		27,733	27,733	40,588
Karbon Homes		846	846	
Sports Foundation		500	500	
Durham County Council		69,591	69,591	49,126
	<u>0</u>	<u>192,540</u>	<u>192,540</u>	<u>204,784</u>

Income Generated from Activities

	Unrestricted	Restricted	Total 2,024	Total 2023
Holiday Activities		15,880	15,880	
Other Activities		14,131	14,131	27,706
Day Service Users	<u>71,252</u>		<u>71,252</u>	
	<u>71,252</u>	<u>30,011</u>	<u>101,263</u>	<u>27,706</u>

Integrating Children

Notes forming part of the Financial Statements to 31st March 2024

3) Resources Expended

Direct Costs	2024	2023		
Holiday Activities	5,418	3,795		
Other Activities	70,459	45,459		
	<u>75,877</u>	<u>49,254</u>		
 Staff Costs				
No employee earned more than £60,000 durin the year	200,344	169,298		
Average no. of employees (including those in direct costs)	<u>10</u>	<u>9</u>		
 Administration				
	Unrestricted	Restricted	Total 2024	Total 2023
Rent	14,400		14,400	11,304
Insurance	404		404	404
Postage				
Sundries	2,579		2,579	1,928
Equipment	6,706		6,706	3,846
Depreciation	1,447		1,447	1,447
	<u>25,536</u>	<u>0</u>	<u>25,536</u>	<u>18,929</u>

Integrating Children

Notes forming part of the Financial Statements to 31st March 2024

4) Trustees Remuneration and Related Party Transactions

No member of the management committee received any remuneration during the year.

5) Tangible Fixed Assets

	<u>Music & Office Equipment</u>	<u>Computer Equipment</u>	<u>Total</u>
Cost			
As at 1st April 2023	9,646	9,099	18,745
Additions			0
Disposals			0
As at 31st March 2024	<u>9,646</u>	<u>9,099</u>	<u>18,745</u>
Depreciation			
As at 1st April 2023	5,966	9,098	15,064
Charge for Year	1,447		1,447
Elimated on Disposal			0
As at 31st March 2024	<u>7,413</u>	<u>9,098</u>	<u>16,511</u>
NBV as at 31st March 2024	<u>2,233</u>	<u>1</u>	<u>2,234</u>
NBV as at 31st March 2023	<u>3,680</u>	<u>1</u>	<u>3,681</u>

6) Creditors

	2024	2023
Accounts	250	250
	<u>250</u>	<u>250</u>

Integrating Children

Notes forming part of the Financial Statements to 31st March 2024

7) **Analysis of Net Assets between Funds**

	General Funds	Restricted Funds	Total
Tangible Fixed Assets	2,234		2,234
Current Assets	37,076	229,688	266,764
Current Liabilities	(250)		(250)
	39,060	229,688	268,748

8) **Movement of Funds**

	As at 1st April 2023	Incoming Resources	Outgoing Resources	Transfers	As at 31st March 2024
Durham Special Needs	32,550	27,773	(32,550)		27,773
Ballinger Trust		25,000	(25,000)		0
GMBC		31,287	(31,287)		0
Big Lottery		16,583	(16,583)		0
Greggs Trust		20,000	(20,000)		0
Durham County Council	197,127	69,551	(64,763)		201,915
Joseph Strong		1,000	(1,000)		0
Other		1,346	(1,346)		0
Activities		30,011	(30,011)		0
Total Restricted	229,677	222,551	(222,540)	0	229,688
Unrestricted Funds					0
General Funds (Capital)	3,681		(1,447)		2,234
General Funds (Revenue)	34,776	79,809	(77,759)		36,826
					0
General Funds	38,457	79,809	(79,206)	0	39,060
Total Funds	268,134	302,360	(301,746)	0	268,748

Transfer of Funds to Designated represents the increase in provision for redundancy

Transfer of funds from Capital to Revenue represents the depreciation charge for the year

Community Accounting

North East CIC

, Birtley Business Centre, Station Lane, Birtley, DH3 1QT

Integrating Children

Independent Examiner's Report

I report on the accounts of Integrating Children for the Period ended 31st March 2024

Respective Responsibilities of Trustees and Examiner

The trustees of the charity are responsible for the preparation of accounts; they consider that the audit requirement under section 144 of the Charities Act 2011 does not apply. I have been appointed under the Charities Act 2011 and report in accordance with the regulations made under section 145 of that Act. It is my responsibility to examine the accounts and statement, without performing an audit, and to report to the trustees.

Basis of Examiner's Statement

This report is in respect of an examination carried out in accordance with the directions given by the Charity Commissioners under the Act). An examination includes a review of the accounting records kept by the charity trustees and a comparison of the accounts presented with those records. It also includes a review of the accounts and making such enquiries as are necessary for the purpose of this report. The procedures undertaken do not constitute an audit.

Examiner's Statement

Based on my examination, no matter has come to my attention which gives me reasonable cause to believe, that in any material respect, accounting records have not been kept in accordance with section 130 of the Charities Act 2011. or that the accounts presented do not accord with those records or comply with the accounting requirements of the Charities Act 2011.

No matter has come to my attention in connection with my examination to which, in my opinion, attention should be drawn to enable a proper understanding of the accounts.

Terry Atkinson
Independent Examiner
26th June 2024

Integrating

England & Wales - Charity number 1090260

Accounts



Trustees' Annual Report for the period

From 01.04.22 Period start date To 31.03.23 Period end date

Charity name: Integrating Children (known as Integrating)

Charity registration number: 1090260

Objectives and Activities

	SORP reference	
Summary of the purposes of the charity as set out in its governing document	Para 1.17	The Charity's objects are: <ol style="list-style-type: none">1. To promote the social, emotional, mental and physical wellbeing of children, young people and adults with disabilities within Durham and the surrounding area and provide respite for their families by supporting members' inclusivity in mainstream leisure services.2. To provide practical support and advice to families and/or carers for children, young people and adults with disabilities.
Summary of the main activities in relation to those purposes for the public benefit, in particular, the activities, projects or services identified in the accounts.	Para 1.17 and 1.19	Integrating Children (operating as Integrating) works with over 75 disabled children, young people and adults aged 5 – 30 years, largely within the Durham City and Chester-le-Street area. The organisation: <ul style="list-style-type: none">• Promotes the social, emotional, mental and physical wellbeing of children, young people and adults with disabilities.• Supports disabled children, young people and adults to develop confidence, social skills, positive relationships and a support network within their community.

- **Helps members experience fulfilling and rewarding lives through the participation in safe, but fun and enjoyable activities.**
- **Assists members to develop their independence to operate effectively and confidently within their community.**
- **Enables members to make positive contributions to their community by engaging in skill development related to their interests and abilities and for some, contributing to the decision-making process within the organisation and developing their leadership skills.**
- **Enables members to make friends and develop positive, meaningful relationships.**
- **Helps families to feel supported to fulfil their caring responsibilities.**

This is achieved by supporting members to take part in the activities we arrange at their request.

Our activities include:

- **Gym club**
- **Visual Arts**
- **Music**
- **Football training**
- **Sportability**
- **Ten pin bowling**
- **Virtual gaming**
- **Swimming**
- **Social Saturdays**
- **Online social activities e.g. family bingo**
- **Residential breaks**
- **Day trips**
- **'InterThinkers' Youth Forum**
- **Adult outreach 'Day Service' for members 16 and older**
- **Assessed Needs provision**
- **Volunteer development programme**

		<p>By involving members in mainstream activities, we can help them to build essential life skills such as:</p> <ul style="list-style-type: none"> • self-confidence • social skills • the ability to engage with others across different situations • a sense of purpose to combat isolation and depression by reducing the negative effect of stress and/or anxiety <p>This is particularly important as at least half of our members have difficulties with social communication and interaction, and restricted interests which impacts their ability to socialise and form lasting friendships.</p> <p>Integrating seeks to develop emotional resilience and a support network through access to fun, but safe, structured, regular and familiar activities.</p> <p>In addition, Integrating:</p> <ul style="list-style-type: none"> • Enables parents/carers to feel supported in fulfilling their caring responsibilities. • Provides short breaks for families. • Provides staff volunteering and working at Integrating every opportunity to gain experience for their future careers e.g. Social Care, Health Care, Social Work, Educational Psychology and Special Needs Education.
<p>Statement confirming whether the trustees have had regard to the guidance issued by the Charity Commission on public benefit</p>	<p>Para 1.18</p>	<p>The Trustees have reviewed and have regard to the guidance issued by the Charity Commission on public benefit in the planning and provision of services and in their governance of the charity.</p>

Additional information (optional)

You may choose to include further statements where relevant about:

	SORP reference	
Policy on grant making	Para 1.38	Integrating does not make grants to individuals although in exceptional circumstances, will support involvement in activities by paying or subsidising costs for families facing difficulties e.g. access to residential opportunities.
Policy on social investment including program related investment	Para 1.38	The organisation has no investments nor policy in relation to this. Due to the size of the organisation, it is highly unlikely that this will apply.
Contribution made by volunteers	Para 1.38	<p>Integrating values volunteers and has a small, but active, group of volunteers at all levels of the organisation:</p> <ul style="list-style-type: none"> • Trustees who have control over the management and administration of the charity e.g. fundraising, recruitment and managing senior staff • Volunteers who support staff in the delivery of services • Local volunteers who help with fundraising initiatives <p>Integrating believes that volunteering is beneficial to individuals' mental and physical health; it is a mutual exchange of time and skills. Integrating provides training, support and tangible appreciation of any voluntary activity.</p> <p>All volunteers who have contact with Integrating members, or who have access to sensitive information and decisions taken, have been recruited, DBS checked and inducted to a standard comparable to that of the recruitment of staff.</p>
Other		

Achievements and Performance

	SORP reference	
<p>Summary of the main achievements of the charity, identifying the difference the charity's work has made to the circumstances of its beneficiaries and any wider benefits to society as a whole.</p>	<p>Para 1.20</p>	<p>Attendance at Integrating activities has a positive impact on the social skills of members, achieved through the many and varied opportunities to engage with peers without the presence of parents and/or carers. This allows our members to develop positive relationships, increase their support network and make friends on their own terms. This has been freely expressed by members in discussion with their support workers on many occasions. Our members value the fact the Integrating:</p> <ul style="list-style-type: none"> • Allows them to make new friends and build positive relationships which are important for developing their own identity. • Enables them to build lasting friendships over prolonged periods. Children and young people with disabilities can often move in and out of services, but Integrating's long-term support allows lasting and meaningful friendships to be maintained. <p>Many of the young people recognise that being involved with Integrating simply makes them feel better about themselves. This can be seen on many occasions where young people come to activities angry or frustrated from something that has happened to them at home or school. Through engagement with familiar and trusted support workers and with the help of their friends, any stress and/or feelings of negativity soon dissipate. Members have also told staff that they fully enjoy being independent, taking part in activities away from parents and carers.</p>

		<p>Parents consistently echo our members' thoughts and are particularly appreciative of the opportunities their children and young people have to engage in fun, safe and rewarding activities with their own friends, but without the worry that can come from being a parent, especially when entrusting their disabled child or youngster to another person's care.</p> <p>Such success has been achieved through the continuous hard work of Integrating's Trustees, staff, volunteers, partners and all the families who have played their part in making the charity run safely and in an enjoyable way.</p>
--	--	--

Additional information (optional)

You may choose to include further statements where relevant about:

Achievements against objectives set	Para 1.41	<p>Integrating offers an adult outreach service for over 16s who no longer attend full-time education.</p> <p>Integrating also offers a service to referrals from partner agencies based on individuals' assessed needs.</p>
Performance of fundraising activities against objectives set	Para 1.41	<p>Fundraising has been very positive with existing funders continuing to support Integrating's objectives.</p>
Investment performance against objectives	Para 1.41	<p>Not applicable</p>
Other		

Financial Review

<p>Review of the charity's financial position at the end of the period</p>	<p>Para 1.21</p>	<p>Integrating achieved income of:</p> <ul style="list-style-type: none"> • Unrestricted: £3,550 • Restricted: £ 232,490 <p>Expenditure</p> <ul style="list-style-type: none"> • Unrestricted: £3,748 • Restricted: £230,919 <p>Brought forward</p> <ul style="list-style-type: none"> • Unrestricted: £38,655 • Restricted: £22,9678 <p>Carried forward</p> <ul style="list-style-type: none"> • Unrestricted: £38,457 • Restricted: £229,678 • Total £268,135
<p>Statement explaining the policy for holding reserves stating why they are held</p>	<p>Para 1.22</p>	<p>Integrating holds a small reserve of about £30,000 together with a dynamic financial management policy, which ensures there are sufficient funds to ensure the organisation can operate for a year on current grant/contract income. Whilst the charity would like to develop a reserve fund which would allow six month's operations, the trustees do not see there being a likelihood of being able to accrue this level of reserves in the foreseeable future. The charity has no long-term liabilities and has been able to operate on an income from diverse sources and payments dates for many years.</p>
<p>Amount of reserves held</p>	<p>Para 1.22</p>	<p>£30,000</p>
<p>Reasons for holding zero reserves</p>	<p>Para 1.22</p>	<p>Not applicable</p>
<p>Details of fund materially in deficit</p>	<p>Para 1.24</p>	<p>Not applicable</p>
<p>Explanation of any uncertainties about the charity continuing as a going concern</p>	<p>Para 1.23</p>	<p>Not applicable</p>

Additional information (optional)

You may choose to include further statements where relevant about:

The charity's principal sources of funds (including any fundraising)	Para 1.47	Local authority contracts 60% Independent trusts and other funders 35% Local fundraising/donations 5%
Investment policy and objectives including any social investment policy adopted	Para 1.46	Not applicable
A description of the principal risks facing the charity	Para 1.46	I. Insufficient fund to maintain the organisation <ul style="list-style-type: none">• Fundraising drives at least three times each year• Pursue all opportunities for funding II. Lose full time posts <ul style="list-style-type: none">• Seek extension of funding
Other		

Structure, Governance and Management

Description of charity's trusts:		
Type of governing document (trust deed, royal charter)	Para 1.25	Constitution
How is the charity constituted? (e.g unincorporated association, CIO)	Para 1.25	Incorporated registered charity
Trustee selection methods including details of any constitutional provisions e.g. election to post or name of any person or body entitled to appoint one or more trustees	Para 1.25	<p>The constitution requires the membership to elect the full board of Trustees at the AGM each year.</p> <p>In reviewing the charity's selection methods, it has been agreed that:</p> <ol style="list-style-type: none"> I. The board will review the group's strengths and needs in February each year and any potential vacancies II. Publicly advertise and recruit for appropriately qualified candidates III. Confirm any new Trustees at AGM by membership.

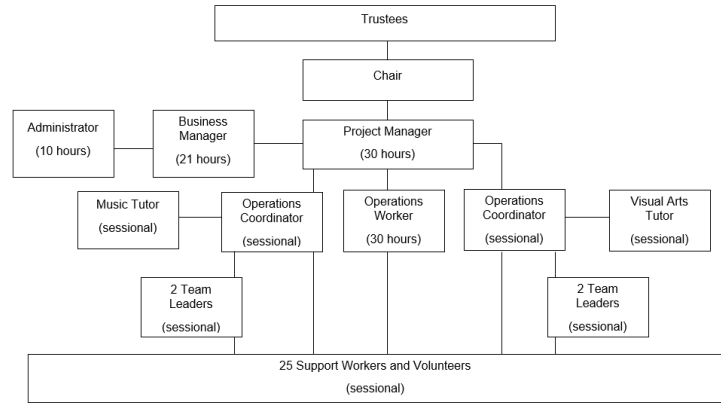
Additional information (optional)

You may choose to include further statements where relevant about:

Policies and procedures adopted for the induction and training of trustees	Para 1.51	<p>Integrating provides a full induction to all new Trustees on appointment based largely around the Charity Commission advice and the constitution of the organisation. Periodic refresher training is provided for Trustees in both their role and operational matters such as safeguarding and the needs of children and young people with disabilities.</p>
The charity's organisational structure and any wider network with which the charity works	Para 1.51	<p>Integrating does not have structural links with other organisations but does have relationships with:</p> <ul style="list-style-type: none"> • Parents/carers – in partnership • Local authority – contractual • Local organisations – delivery partnership
Relationship with any related parties	Para 1.51	

Other

The charity's organisational structure



Reference and Administrative details

Charity name	Integrating
Other name the charity uses	Integrating Children and Young People
Registered charity number	1090260
Charity's principal address	Bullion Hall South Approach Chester-le-Street County Durham DH2 2DW

Names of the charity trustees who manage the charity

	Trustee name	Office (if any)	Dates acted if not for whole year	Name of person (or body) entitled to appoint trustee (if any)
1	Richard Taylor	Chair		Members
2	Sarah Warwick	Vice-Chair		Members
3	Lynne Thompson	Treasurer		Members
4	Paul Archer			Members
5	Elizabeth Burns			Members
6	Lynne Clark			Members
7	Benedict Corrigan		From July 2023	Members
8	Kimberley Handley		From July 2023	Members
9	Lucy Hinds			Members
10	Michael McGlone			Members
11	Jayne Oliver			Members
12	Alison White			Members
13				
14				
15				
16				
17				
18				
19				
20				

Corporate trustees – names of the directors at the date the report was approved

Director name	Not applicable	

Name of trustees holding title to property belonging to the charity

Trustee name	Dates acted if not for whole year	
	Not applicable	

Funds held as custodian trustees on behalf of others

Description of the assets held in this capacity	Not applicable
Name and objects of the charity on whose behalf the assets are held and how this falls within the custodian charity's objects	Not applicable
Details of arrangements for safe custody and segregation of such assets from the charity's own assets	Not applicable

Additional information (optional)

Names and addresses of advisers (Optional information)

Type of adviser	Name	Address
-----------------	------	---------

Name of chief executive or names of senior staff members (Optional information)

David Gaudie- Project Manager Kathryn Gaudie-Jones – Business manager
--

Exemptions from disclosure

Reason for non-disclosure of key personnel details

--

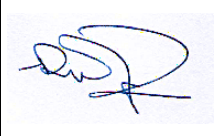
Other optional information

--

Declarations

The trustees declare that they have approved the trustees' report above.

Signed on behalf of the charity's trustees

Signature(s)		
Full name(s)	Richard William Taylor	
Position (eg Secretary, Chair, etc)	Chair	
Date	7 th January 2024	

Integrating Children

**Financial Statements for the Period ended
31st March 2023**

Charity No: 1090260

***Community Accounting CIC
Pinetree Centre
Durham Road
Birtley
Co. Durham
DH3 2TD***

Integrating Children

CONTENTS

Statement of Financial Activities

Balance Sheet

Notes to the Financial Statements

Integrating Children

Statement of Financial Activities (including Income & Expenditure Account) For the Year ended 31st March 2023


	Unrestricted Funds 2023 £	Restricted Funds 2023 £	Total Funds 2023 £	Total Funds 2022 £
Incoming Resources				
Fund Raising and Donations	3,550		3,550	7,082
Grants		204,784	204,784	215,673
Income generated from Activities	0	27,706	27,706	5,014
Interest Received	0		0	0
Other Income	0		0	0
Total Incoming Resources	<u>3,550</u>	<u>232,490</u>	<u>236,040</u>	<u>227,769</u>
Resources Expended				
Direct Costs		49,254	49,254	30,652
Staffing Costs	0	169,298	169,298	112,305
Administration	3,748	15,180	18,928	18,337
Total Resources Expended	<u>3,748</u>	<u>233,731</u>	<u>237,479</u>	<u>161,294</u>
Net Incoming Resources	<u>(198)</u>	<u>(1,241)</u>	<u>(1,440)</u>	<u>66,475</u>
Transfer between Funds	0	0		
Total Funds Brought Forward	38,655	230,919	269,574	203,099
Total Funds Carried Forward	<u>38,457</u>	<u>229,678</u>	<u>268,134</u>	<u>269,574</u>

Integrating Children

Balance Sheet as at 31st March 2023

	2023 £	2022 £
Fixed Assets		
Tangible Fixed Assets	3,681	5,128
Current Assets		
Debtors		
Cash at Bank and in Hand	<u>264,703</u>	<u>264,696</u>
	264,703	264,696
Less		
Current Liabilities		
(Payable within one year)		
Accruals	<u>250</u>	<u>250</u>
Net Current Assets	264,453	264,446
Net Assets	<u>268,134</u>	<u>269,574</u>
Funded by		
Unrestricted Funds		
General		
Capital	3,681	5,128
Revenue	<u>34,776</u>	<u>33,527</u>
	38,457	38,655
Restricted Funds	229,678	230,919
Total Funds	<u>268,134</u>	<u>269,574</u>

Approved



Trustee

Date: 11th November 2023.

Integrating Children

Notes forming part of the Financial Statements to 31st March 2023

1) Accounting Policies

The principal accounting policies are summarised below. The accounting policies have been applied consistently throughout the year and in the preceding year.

a) **Basis of accounting**

The financial statements have been prepared under the historical cost convention in accordance with the Statement of Recommended Practice: Accounting and Reporting by Charities issued in March 2005.

b) **Revenue Grants**

Gross amount received as recognised within incoming resources and corresponding expense is shown with outgoing resources

c) **Taxation**

The charity is registered and exempt from taxation on its charitable activities

d) **Fixed Assets**

Fixed assets are stated at cost less accumulated depreciation. Depreciation is provided at rates calculated to write off the cost of each asset over its expected useful life.

Music and Office Equipment	15% Straight Line
Computer Equipment	15% Straight Line

Integrating Children

Notes forming part of the Financial Statements to 31st March 2023

2) Incoming Resources

Grants	Unrestricted	Restricted	Total 2023	Total 2022
Big Lottery Mains Grant		33,166	33,166	30,840
GMBC		46,480	46,480	29,915
Greggs		20,000	20,000	
Big Lottery Community Fund		6,424	6,424	10,000
Ballinger Trust		8,000	8,000	7,912
Joseph Strong		1,000	1,000	
Durham and Dundee Special Needs		40,588	40,588	55,914
Durham County Council Moving on up			0	24,645
Durham County Council		49,126	49,126	56,447
	<u>0</u>	<u>204,784</u>	<u>204,784</u>	<u>215,673</u>

Income Generated from Activities

	Unrestricted	Restricted	Total 2023	Total 2022
Holiday Activities				
Other Activities		27,706	27,706	5,014
	<u>0</u>	<u>27,706</u>	<u>27,706</u>	<u>5,014</u>

Integrating Children

Notes forming part of the Financial Statements to 31st March 2023

3) Resources Expended

Direct Costs	2023	2022		
Holiday Activities	3,795	6,348		
Other Activities	45,459	24,305		
	<u>49,254</u>	<u>30,653</u>		
 Staff Costs				
No employee earned more than £60,000 durin the year	169,298	112,305		
Average no. of employees (including those in direct costs)	<u>9</u>	<u>8</u>		
 Administration				
	Unrestricted	Restricted	Total 2023	Total 2022
Rent		11,304	11,304	9,517
Insurance	404		404	404
Postage				80
Sundries	1,897	31	1,928	2,626
Equipment		3,846	3,846	3,510
Depreciation	1,447		1,447	2,201
	<u>3,748</u>	<u>15,181</u>	<u>18,928</u>	<u>18,338</u>

Integrating Children

Notes forming part of the Financial Statements to 31st March 2023

4) Trustees Remuneration and Related Party Transactions

No member of the management committee received any remuneration during the year.

5) Tangible Fixed Assets

	<u>Music & Office Equipment</u>	<u>Computer Equipment</u>	<u>Total</u>
Cost			
As at 1st April 2022	9,646	9,099	18,745
Additions			0
Disposals			0
As at 31st March 2023	<u>9,646</u>	<u>9,099</u>	<u>18,745</u>
Depreciation			
As at 1st April 2022	4,519	9,098	13,617
Charge for Year	1,447		1,447
Elimated on Disposal			0
As at 31st March 2023	<u>5,966</u>	<u>9,098</u>	<u>15,064</u>
NBV as at 31st March 2023	<u>3,680</u>	<u>1</u>	<u>3,681</u>
NBV as at 31st March 2022	<u>5,127</u>	<u>1</u>	<u>5,128</u>

6) Creditors

	2023	2022
Accounts	250	250
	<u>250</u>	<u>250</u>

Integrating Children

Notes forming part of the Financial Statements to 31st March 2023

7) Analysis of Net Assets between Funds

	General Funds	Restricted Funds	Total
Tangible Fixed Assets	3,681		3,681
Current Assets	35,026	229,677	264,703
Current Liabilities	(250)		(250)
	38,457	229,677	268,134

8) Movement of Funds

	As at 1st April 2022	Incoming Resources	Outgoing Resources	Transfers	As at 31st March 2023
Durham and Dundee Special Needs	32,550	40,588	(40,588)		32,550
Big Lottery Mains Grant		33,166	(33,166)		0
GMBC		46,480	(46,480)		0
Big Lottery Community Fund		6,424	(6,424)		0
Ballinger Trust		8,000	(8,000)		0
Joseph Strong		1,000	(1,000)		0
Greggs Trust		20,000	(20,000)		0
Durham County Council	173,723	49,126	(25,722)		197,127
Durham County Council Moving on up Activities	24,645		(24,645)		0
		27,706	(27,706)		0
Total Restricted	230,918	232,490	(233,731)	0	229,677
Unrestricted Funds					0
General Funds (Capital)	14,421		(1,447)	(9,293)	3,681
General Funds (Revenue)	24,234	3,550	(2,301)	9,293	34,776
					0
General Funds	38,655	3,550	(3,748)	0	38,457
Total Funds	269,573	236,040	(237,479)	0	268,134

Transfer of Funds to Designated represents the increase in provision for redundancy

Transfer of funds from Capital to Revenue represents the depreciation charge for the year

Community Accounting

North East CIC

Pinetree Centre, Durham Road, Birtley, DH3 2TD
Tel: 0191 4928232

Sunderland Women's Centre
8 Green Terrace
Sunderland
SR1 3PZ

Accountant's / Independent Examiner's Report

I report on the accounts of Sunderland Women's Centre for the year ended 31st July 2023

Respective Responsibilities of Trustees and Examiner

The trustees of the charity are responsible for the preparation of accounts; they consider that the audit requirement under section 144 of the Charities Act 2011 does not apply. I have been appointed under the Charities Act 2011 and report in accordance with the regulations made under section 145 of that Act. It is my responsibility to examine the accounts and statement, without performing an audit, and to report to the trustees.

Basis of Examiner's Statement

This report is in respect of an examination carried out under the directions of Charities Act 2011 and in accordance with the directions given by the Charity Commissioners, an examination includes a review of the accounting records kept by the charity trustees and a comparison of the accounts presented with those records. It also includes a review of the accounts and making such enquiries as are necessary for the purpose of this report. The procedures undertaken do not constitute an audit.

Examiner's Statement

Based on my examination, no matter has come to my attention which gives me reasonable cause to believe, that in any material respect, accounting records have not been kept in accordance with section 130 of the Charities Act 2011. or that the accounts presented do not accord with those records or comply with the accounting requirements of the Companies Act 2006. No matter has come to my attention in connection with my examination to which, in my opinion, attention should be drawn to enable a proper understanding of the accounts.

In my opinion, the accounts are in agreement with the accounting records kept by the company , and have regard only to, and on the basis of, the information contained in those accounting records, those accounts have been drawn up in a manner consistent with the provisions of this Act specified, so far as is applicable to the company.

Community Accounting

North East CIC

Pinetree Centre, Durham Road, Birtley, DH3 2TD
Tel: 0191 4928232

In my opinion, having regard to and on the basis of, the information contained in the accounting records kept by the company, the company as a charity satisfied the requirements of the Act for the financial year.

Terry Atkinson
Independent Examiner
6th November 2023

Integrating

England & Wales - Charity number 1090260

Accounts



Trustees' Annual Report for the period

From 01.04.21 Period start date To 31.03.22 Period end date

Charity name: Integrating Children (known as Integrating)

Charity registration number: 1090260

Objectives and Activities

	SORP reference	
Summary of the purposes of the charity as set out in its governing document	Para 1.17	The Charity's objects are: <ol style="list-style-type: none">1. To promote the social, emotional, mental and physical wellbeing of children, young people and adults with disabilities within Durham and the surrounding area and respite for their families by supporting members' inclusivity in mainstream leisure services.2. To provide practical support and advice to families and/or carers for children, young people and adults with disabilities.
Summary of the main activities in relation to those purposes for the public benefit, in particular, the activities, projects or services identified in the accounts.	Para 1.17 and 1.19	Integrating Children (operating as Integrating) works with over 100 disabled children, young people and adults aged 5 – 30 years, largely within the Durham City and Chester-le-Street area. The organisation: <ul style="list-style-type: none">• Promotes the social, emotional, mental and physical wellbeing of children, young people and adults with disabilities.• Supports disabled children, young people and adults to develop the social skills and confidence to be able to take part in leisure and recreational activities in their local community.

- | | | |
|--|--|--|
| | | <ul style="list-style-type: none">• Helps members experience full and interesting lives through the participation in enjoyable, constructive and activities.• Assists members to develop their independence, operate effectively and confidently within the community• Enables many members to make positive contributions to their community by engaging in skill development related to their interests and abilities, for some contributing to the decision-making process within the organisation and for others, developing their leadership skills.• Enables members to have fun and make lasting friendships.• Provides advice and respite for families experiencing difficulties in stressful situations. |
|--|--|--|

This is achieved by supporting members to take part in the activities we arrange at their request.

Our activities include:

- **Gym club**
- **Music**
- **Digital Arts**
- **Football training**
- **Sportability**
- **Ten pin bowling**
- **Gaming**
- **Swimming**
- **Social Saturdays**
- **Online social activities e.g. family bingo**
- **Residential breaks**
- **Day trips**
- **InterThinkers Youth Forum**
- **'Moving On Up' – Day Service**
- **Assessed Needs programme**
- **Volunteer development programme**

		<p>By involving members in mainstream activities, we can help them to build essential life skills such as:</p> <ul style="list-style-type: none"> • self-confidence • social skills • the ability to engage with others in different situations • a sense of purpose to combat depression • the ability to reduce the effects of stress and/or anxiety <p>This is particularly important as at least half of our members have Autism, which, by its very nature, can create isolation with a lack of meaningful or rewarding relationships.</p> <p>Integrating seeks to develop emotional resilience and security through access to regular and familiar activities.</p> <p>In addition, Integrating:</p> <ul style="list-style-type: none"> • Enables parents/carers of children, young people and adults with disabilities to have regular respite to spend time with other family members • Provides staff who volunteer and work at Integrating the chance to gain experience for their future careers e.g. Adult Social Care, Medicine and Nursing, Social Work, Educational Psychology and Special Needs Education.
Statement confirming whether the trustees have had regard to the guidance issued by the Charity Commission on public benefit	Para 1.18	The Trustees have reviewed and have regard to the guidance issued by the Charity Commission on public benefit in the planning and provision of services and in their governance of the charity.

Additional information (optional)

You may choose to include further statements where relevant about:

	SORP reference	
Policy on grant making	Para 1.38	Integrating does not make grants to individuals although in exceptional circumstances, will support involvement in activities by paying or subsidising costs for families facing

		difficulties e.g. access to residential opportunities.
Policy on social investment including program related investment	Para 1.38	The organisation has no investments nor policy in relation to this. Due to the size of the organisation, it is highly unlikely that this will apply.
Contribution made by volunteers	Para 1.38	<p>Integrating values volunteers and has a small, but active, group of volunteers at all levels of the organisation:</p> <ul style="list-style-type: none"> • Trustees who have control over the management and administration of the charity e.g. fundraising, recruitment and managing senior staff • Volunteers who support staff in the delivery of services • Local volunteers who help with fundraising initiatives <p>Integrating believes that volunteering is beneficial to individual's mental and physical health; it is a mutual exchange of time and skills. Integrating provides training, support and tangible appreciation of voluntary activity.</p> <p>All volunteers who have contact with Integrating members, or who have access to sensitive information and decisions taken, have been recruited, DBS checked and inducted to a standard comparable to that of the recruitment of staff.</p>
Other		

Achievements and Performance

	SORP reference	
--	----------------	--

Summary of the main achievements of the charity, identifying the difference the charity's work has made to the circumstances of its beneficiaries and any wider benefits to society as a whole.

Para 1.20

Attendance at Integrating activities has a positive impact on the socialisation of members, achieved through the many and varied opportunities to engage with peers without the presence of parents and/or carers. This allows our members to increase their social network and make friends on their own terms. This has been freely expressed by members in discussion with their support workers on many occasions. Our members value the fact the Integrating:

- **Allows them to make new friends and develop social networks which are important for developing their own identity**
- **Builds lasting friendships over prolonged periods. Children and young people with disabilities can often move in and out of services, but Integrating's long-term support enables lasting and meaningful friendships to be maintained**

Many of the young people recognise that being involved with Integrating simply makes them feel better about themselves. This can be seen on many occasions where young people come to activities angry or frustrated from something that has happened to them at home or school. Through engagement with familiar and trusted support workers and their friends, any stress and feelings of negativity soon dissipates. Members have also told staff that they fully enjoy being independent, taking part in activities away from parents and carers.

Parents consistently echo our members' thoughts and are particularly appreciative of the opportunities their children and young people have to engage in fun,

		<p>safe and rewarding activities with their own friends, but without the worry that can come from being a parent, especially when entrusting their disabled child or youngster to another person's care.</p> <p>These successes have been achieved through the continuous hard work of Integrating's Trustees, staff, volunteers, partners and all the families who have played their part in making the charity run safely and in an enjoyable way.</p>
--	--	--

Additional information (optional)

You may choose to include further statements where relevant about:

Achievements against objectives set	Para 1.41	<p>Integrating began its transition back to live activities and has been fully operational since February 2022.</p> <p>Integrating has since developed a service called 'Inter-Plus', which is a day care service for young adults who no longer attend education. It is called 'Moving On Up.'</p> <p>Integrating also offers a service to referrals from partner agencies based on assessed needs.</p>
Performance of fundraising activities against objectives set	Para 1.41	<p>Fundraising has been very positive with existing funders continuing to support Integrating's objectives.</p>
Investment performance against objectives	Para 1.41	<p>Not applicable</p>
Other		

Financial Review

Review of the charity's financial position at the end of the period	Para 1.21	<p>Integrating achieved income of:</p> <ul style="list-style-type: none"> • Unrestricted: £7,082 • Restricted: £220, 687 <p>Expenditure</p> <ul style="list-style-type: none"> • Unrestricted: £2, 812 • Restricted: £158, 482 <p>Brought forward</p> <ul style="list-style-type: none"> • Unrestricted: £34, 384 • Restricted: £168, 715 <p>Carried forward</p> <ul style="list-style-type: none"> • Unrestricted: £38, 655 • Restricted: £230, 919 • Total £269, 574
Statement explaining the policy for holding reserves stating why they are held	Para 1.22	<p>Integrating holds a small reserve of about £30,000 together with a dynamic financial management policy, which ensures there are sufficient funds to ensure the organisation can operate for a year on current grant/contract income. Whilst the charity would like to develop a reserve fund which would allow six month's operations, the trustees do not see there being a likelihood of being able to accrue this level of reserves in the foreseeable future. The charity has no long-term liabilities and has been able to operate on an income from diverse sources and payments dates for many years.</p>
Amount of reserves held	Para 1.22	£30,000
Reasons for holding zero reserves	Para 1.22	Not applicable
Details of fund materially in deficit	Para 1.24	Not applicable
Explanation of any uncertainties about the charity continuing as a going concern	Para 1.23	Not applicable

Additional information (optional)

You may choose to include further statements where relevant about:

		Local authority contracts	60%
		Independent trusts	

The charity's principal sources of funds (including any fundraising)	Para 1.47	and other funders 35% Local fundraising/donations 5%
Investment policy and objectives including any social investment policy adopted	Para 1.46	Not applicable
A description of the principal risks facing the charity	Para 1.46	I. Insufficient fund to maintain the organisation <ul style="list-style-type: none"> • Fundraising drives at least three times each year • Pursue all opportunities for funding II. Lose full time posts <ul style="list-style-type: none"> • Seek extension of funding
Other		

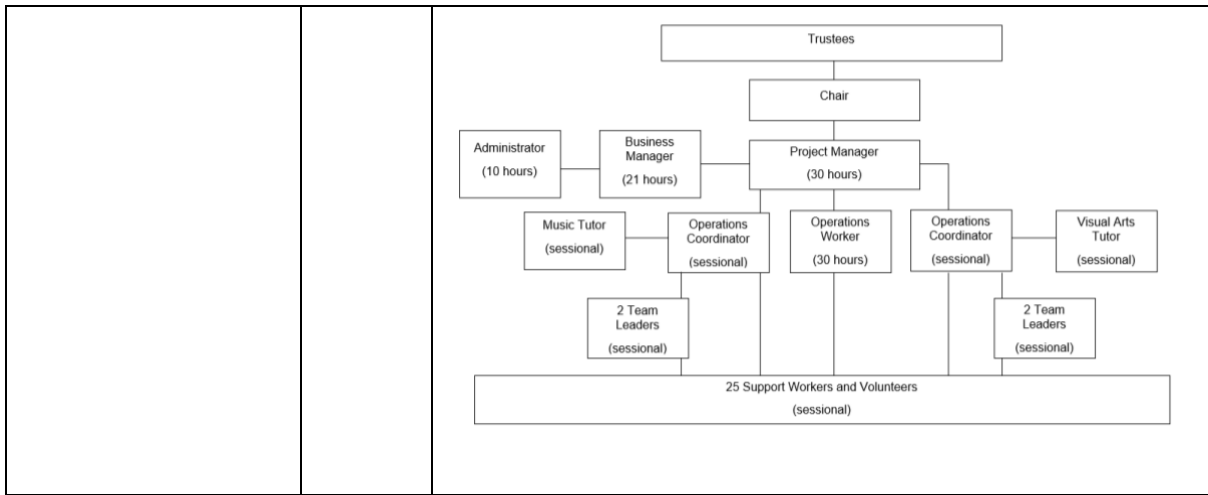
Structure, Governance and Management

Description of charity's trusts:		
Type of governing document (trust deed, royal charter)	Para 1.25	Constitution
How is the charity constituted? (e.g unincorporated association, CIO)	Para 1.25	Incorporated registered charity
Trustee selection methods including details of any constitutional provisions e.g. election to post or name of any person or body entitled to appoint one or more trustees	Para 1.25	<p>The constitution requires the membership to elect the full board of Trustees at the AGM each year.</p> <p>In reviewing the charity's selection methods, it has been agreed that:</p> <ol style="list-style-type: none"> I. The board will review the group's strengths and needs in February each year and any potential vacancies II. Publicly advertise and recruit for appropriately qualified candidates III. Confirm any new Trustees at AGM by membership.

Additional information (optional)

You may choose to include further statements where relevant about:

Policies and procedures adopted for the induction and training of trustees	Para 1.51	<p>Integrating provides a full induction to all new Trustees on appointment based largely around the Charity Commission advice and the constitution of the organisation. Periodic refresher training is provided for Trustees in both their role and operational matters such as safeguarding and the needs of children and young people with disabilities.</p>
The charity's organisational structure and any wider network with which the charity works	Para 1.51	<p>Integrating does not have structural links with other organisations but does have relationships with:</p> <ul style="list-style-type: none"> • Parents/carers – in partnership • Local authority – contractual • Local organisations – delivery partnership
Relationship with any related parties	Para 1.51	
Other		The charity's organisational structure



Reference and Administrative details

Charity name	Integrating
Other name the charity uses	Integrating Children and Young People
Registered charity number	1090260
Charity's principal address	Bullion Hall South Approach Chester-le-Street County Durham DH2 2DW

Names of the charity trustees who manage the charity

	Trustee name	Office (if any)	Dates acted if not for whole year	Name of person (or body) entitled to appoint trustee (if any)
1	Richard Taylor	Chair		Members
2	Sarah Warwick	Vice-Chair		Members
3	Lynne Thompson	Treasurer		Members
4	Karen Bowlzer	Secretary		Members
5	Paul Archer			Members
6	Emma Bowlzer			Co-opted
7	Elizabeth Burns			Members
8	Lucy Hinds			Members
9	Alison Laverick			Members
10	Jayne Oliver			Members
11	Julie Pattinson			Members
12	Alison White			Members
13				
14				
15				
16				
17				
18				
19				
20				

Corporate trustees – names of the directors at the date the report was approved

Director name	Not applicable	

Name of trustees holding title to property belonging to the charity

Trustee name	Dates acted if not for whole year	
	Not applicable	

Funds held as custodian trustees on behalf of others

Description of the assets held in this capacity	Not applicable
Name and objects of the charity on whose behalf the assets are held and how this falls within the custodian charity's objects	Not applicable
Details of arrangements for safe custody and segregation of such assets from the charity's own assets	Not applicable

Additional information (optional)

Names and addresses of advisers (Optional information)

Type of adviser	Name	Address
-----------------	------	---------

Name of chief executive or names of senior staff members (Optional information)

David Gaudie- Project Manager Kathryn Gaudie-Jones – Business manager
--

Exemptions from disclosure

Reason for non-disclosure of key personnel details

--

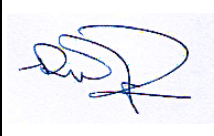
Other optional information

--

Declarations

The trustees declare that they have approved the trustees' report above.

Signed on behalf of the charity's trustees

Signature(s)		
Full name(s)	Richard William Taylor	
Position (eg Secretary, Chair, etc)	Chair	
Date	14 th January 2023	

Integrating Children

**Financial Statements for the Period ended
31st March 2022**

Charity No: 1090260

***Community Accounting CIC
Pinetree Centre
Durham Road
Birtley
Co. Durham
DH3 2TD***

Integrating Children

CONTENTS

Statement of Financial Activities

Balance Sheet

Notes to the Financial Statements

Integrating Children

Statement of Financial Activities (including Income & Expenditure Account) For the Year ended 31st March 2022

	Unrestricted Funds 2022 £	Restricted Funds 2022 £	Total Funds 2022 £	Total Funds 2021 £
Incoming Resources				
Fund Raising and Donations	7,082		7,082	4,043
Grants		215,673	215,673	215,707
Income generated from Activities	0	5,014	5,014	1,390
Interest Received	0		0	0
Other Income	0		0	0
Total Incoming Resources	<u>7,082</u>	<u>220,687</u>	<u>227,769</u>	<u>221,140</u>
Resources Expended				
Direct Costs		30,652	30,652	6,217
Staffing Costs	0	112,305	112,305	59,094
Administration	2,812	15,525	18,337	8,293
Total Resources Expended	<u>2,812</u>	<u>158,482</u>	<u>161,294</u>	<u>73,604</u>
Net Incoming Resources	<u>4,271</u>	<u>62,204</u>	<u>66,475</u>	<u>147,536</u>
Transfer between Funds	0	0		
Total Funds Brought Forward	34,384	168,715	203,099	55,563
Total Funds Carried Forward	<u>38,655</u>	<u>230,919</u>	<u>269,574</u>	<u>203,099</u>

Integrating Children

Balance Sheet as at 31st March 2022

	2022 £	2021 £
Fixed Assets		
Tangible Fixed Assets	5,128	7,339
Current Assets		
Debtors		
Cash at Bank and in Hand	<u>264,696</u>	<u>196,010</u>
	264,696	196,010
Less		
Current Liabilities		
(Payable within one year)		
Accruals	<u>250</u>	<u>280</u>
Net Current Assets	264,446	195,730
Net Assets	<u>269,574</u>	<u>203,069</u>
Funded by		
Unrestricted Funds		
General		
Capital	5,128	7,339
Revenue	<u>33,526</u>	<u>27,015</u>
	38,655	34,354
Restricted Funds	230,919	168,715
Total Funds	<u>269,574</u>	<u>203,069</u>

Approved

..... Trustee

Date.....

Integrating Children

Notes forming part of the Financial Statements to 31st March 2022

1) Accounting Policies

The principal accounting policies are summarised below. The accounting policies have been applied consistently throughout the year and in the preceding year.

a) **Basis of accounting**

The financial statements have been prepared under the historical cost convention in accordance with the Statement of Recommended Practice: Accounting and Reporting by Charities issued in March 2005.

b) **Revenue Grants**

Gross amount received as recognised within incoming resources and corresponding expense is shown with outgoing resources

c) **Taxation**

The charity is registered and exempt from taxation on its charitable activities

d) **Fixed Assets**

Fixed assets are stated at cost less accumulated depreciation. Depreciation is provided at rates calculated to write off the cost of each asset over its expected useful life.

Music and Office Equipment	15% Straight Line
Computer Equipment	15% Straight Line

Integrating Children

Notes forming part of the Financial Statements to 31st March 2022

2) Incoming Resources

Grants	Unrestricted	Restricted	Total 2022	Total 2021
Mains Grant Lottery		30,840	30,840	0
GMBC		29,915	29,915	0
Big Lottery Community Fund		10,000	10,000	0
Ballinger Trust		7,912	7,912	7,912
Greggs Trust			0	15,000
Jos Strong Fraser Trust			0	1,000
Durham and Dundee Special Needs		55,914	55,914	
DurhM County Council Moving on Up		24,645	24,645	
Durham County Council		56,447	56,447	191,795
	<u>0</u>	<u>215,673</u>	<u>215,673</u>	<u>215,707</u>

Income Generated from Activities

	Unrestricted	Restricted	Total 2022	Total 2021
Holiday Activities				
Other Activities		5,014	5,014	1,390
	<u>0</u>	<u>5,014</u>	<u>5,014</u>	<u>1,390</u>

Integrating Children

Notes forming part of the Financial Statements to 31st March 2022

3) Resources Expended

Direct Costs	2022	2021		
Holiday Activities	6,348			
Other Activities	24,305	6,217		
	<u>30,652</u>	<u>6,217</u>		
Staff Costs				
No employee earned more than £60,000 durin the year	112,305	59,094		
Average no. of employees (including those in direct costs)	<u>8</u>	<u>5</u>		
Administration	Unrestricted	Restricted	Total 2022	Total 2021
Rent		9,517	9,517	930
Insurance		404	404	421
Postage		80	80	0
Sundries		2,626	2,626	4,160
Equipment		3,510	3,510	0
Depreciation	2,201		2,201	2,812
	<u>2,201</u>	<u>16,137</u>	<u>18,337</u>	<u>8,323</u>

Integrating Children

Notes forming part of the Financial Statements to 31st March 2022

4) Trustees Remuneration and Related Party Transactions

No member of the management committee received any remuneration during the year.

5) Tangible Fixed Assets

	<u>Music & Office Equipment</u>	<u>Computer Equipment</u>	<u>Total</u>
Cost			
As at 1st April 2021	9,646	9,099	18,745
Additions			0
Disposals			0
As at 31st March 2022	<u>9,646</u>	<u>9,099</u>	<u>18,745</u>
Depreciation			
As at 1st April 2021	3,072	8,344	11,416
Charge for Year	1,447	754	2,201
Elimated on Disposal			0
As at 31st March 2022	<u>4,519</u>	<u>9,098</u>	<u>13,617</u>
NBV as at 31st March 2022	<u>5,127</u>	<u>1</u>	<u>5,128</u>
NBV as at 31st March 2021	<u>6,574</u>	<u>755</u>	<u>7,329</u>

6) Creditors

	2022	2021
Accounts	280	250
	<u>280</u>	<u>250</u>

Integrating Children

Notes forming part of the Financial Statements to 31st March 2022

7) Analysis of Net Assets between Funds

	General Funds	Restricted Funds	Total
Tangible Fixed Assets	5,128		5,128
Current Assets	33,746	230,950	264,696
Current Liabilities	(250)		(250)
	<u>38,624</u>	<u>230,950</u>	<u>269,574</u>

8) Movement of Funds

	As at 1st April 2021	Incoming Resources	Outgoing Resources	Transfers	As at 31st March 2022
Mains Grant Lottery	28,684	30,840	30,840		0
Ballinger Trust	5,900	7,912	13,812		0
Big Lottery Community Fund		10,000	10,000		0
Durham and Dundee Special Needs		55,914	23,364		32,550
Durham CC Moving on up		24,645	0		24,645
GMBC		29,915	29,915		0
Greggs Trust	12,500		12,500		0
Durham County Council	117,308	56,447	0		173,755
Jos Strong Fraser Trust	1,000	5,014	1,000		0
Activities	<u>3,323</u>		<u>3,323</u>		<u>0</u>
Total Restricted	<u>168,715</u>	<u>220,687</u>	<u>124,754</u>	<u>0</u>	<u>230,950</u>
Unrestricted Funds					0
General Funds (Capital)	7,339	7,082			14,421
General Funds (Revenue)	27,015	0	2,812		24,203
					<u>0</u>
General Funds	<u>34,354</u>	<u>7,082</u>	<u>2,812</u>	<u>0</u>	<u>38,624</u>
Total Funds	<u>203,069</u>	<u>227,769</u>	<u>127,566</u>	<u>0</u>	<u>269,574</u>

Transfer of Funds to Designated represents the increase in provision for redundancy

Transfer of funds from Capital to Revenue represents the depreciation charge for the year

Integrating

England & Wales - Charity number 1090260

Accounts



Trustees' Annual Report for the period

From 01/04/2020 Period start date To 31/03/2021 Period end date

Charity name: Integrating Children (known as Integrating)

Charity registration number: 1090260

Objectives and Activities

	SORP reference	
Summary of the purposes of the charity as set out in its governing document	Para 1.17	The Charity's objects are: 1. To promote the relief of the needs of children and young people, particularly those with disabilities, and their families within County Durham and its environs, by encouraging and supporting integrated play and access to mainstream leisure services, with the object of improving their conditions of life 2. The provision of practical support and advice to families and/or carers of such children and young people.
Summary of the main activities in relation to those purposes for the public benefit, in particular, the activities, projects or services identified in the accounts.	Para 1.17 and 1.19	Integrating Children (operating as Integrating) works with over 100 disabled children and young people, each year, aged 6 to 25 years, largely in the Durham City and Chester le Street areas. The organisation - <ul style="list-style-type: none">• Promotes the emotional and physical wellbeing of children and young people with disabilities.• Supports disabled children develop the social skills and confidence to be able to take part in leisure and recreational activities in their community• Helps disabled children to experience full and interesting lives through taking part in enjoyable constructive activities

	<ul style="list-style-type: none">• Assists disabled young adults to operate effectively and confidently in the community • Helps disabled children to have fun and make friends. • Provides advice and respite for families experiencing stress <p>This is achieved through arranging activities and supporting children and young people to take part in them. Our activities include:</p> <ul style="list-style-type: none">• Swimming• Music• Digital Arts• Football training• Residential breaks• Social clubs• Trips out• Gym club <p>By involving disabled children in mainstream activities, we can help them to build key life skills such as confidence, friendships and being able to interact with others. This is particularly important as about half the children worked with have autistic spectrum conditions, which, by their nature, can create isolation unless children develop security through regular and familiar activity.</p> <p>Integrating Children’s work also;</p> <ul style="list-style-type: none">• Enables parents of children with disabilities to have regular respite to spend time with other family members and • Provides the young people who volunteer and work with Integrating Children the chance to gain experience, which enhances their opportunities for work within caring professions. This has included Adult Social Care, Nursing, Social Work and Special Needs Education.
--	---

Statement confirming whether the trustees have had regard to the guidance issued by the Charity Commission on public benefit	Para 1.18	The Trustees of Integrating Children have reviewed and have regard to the guidance issued by the Charity Commission on public benefit in the planning and provision of services and in their governance of the charity.
--	-----------	--

Additional information (optional)

You may choose to include further statements where relevant about:

	SORP reference	
Policy on grant making	Para 1.38	Integrating Children does not make grants to individuals although in exceptional circumstances will support involvement in activities through paying or subsidising costs for families facing difficulties.
Policy on social investment including program related investment	Para 1.38	The organisation has no investments nor policy in relation to this. Due to the size of the organisation, it is highly unlikely that this will apply.
Contribution made by volunteers	Para 1.38	<p>Integration Children values volunteers and has a small but active group of volunteers at all levels of the organisation,</p> <ul style="list-style-type: none"> • Trustees who also act as the management and administrative functions of the charity e.g. fundraising, recruitment, managing senior staff. • Volunteers who support staff in the delivery of services • Local volunteers who help in fundraising initiatives <p>Integrating Children believes that volunteering is a mutual exchange of time and skills and will provide training, support and tangible appreciation of voluntary activity.</p> <p>All volunteers who have contact with children and young people or who have access to sensitive information and decisions are recruited, DBS checked and inducted to a standard comparable to that of the recruitment of staff.</p>

Achievements and Performance

	SORP reference	
<p>Summary of the main achievements of the charity, identifying the difference the charity's work has made to the circumstances of its beneficiaries and any wider benefits to society as a whole.</p>	<p>Para 1.20</p>	<p>Attendance at Integrating has social impacts, which are achieved through the opportunity to engage with peer without the presence of parents. This allows children to increase their social skills and make friendships on their own terms. This has been expressed by children when they speak with their Support Workers throughout activities who are seen to and value –</p> <ul style="list-style-type: none"> * Making new friends and developing social networks which are important for developing their identity. * Creating friendships which can last for prolonged periods. Often children with disabilities move in and out of services; Integrating's long-term support allows lasting and high quality friendships to be maintained. <p>Many of the young people recognise that being involved in Integrating makes them feel better about themselves. This can be seen on occasions where young people come to activities angry or frustrated from something that has happened to them at home or school. Through engagement with support workers and their friends this emotional stress soon dissipates. Children have also told staff that they enjoy being involved in activities as independent people, away from their parents and carers.</p> <p>Parents consistently echo their children's thoughts and are particularly appreciative of the opportunity for their children to have fun and make friends.</p> <p>These achievements have been achieved through the hard work of Integrating's trustees, staff, volunteers, partners and all the families who have played their part in making the charity run safely and enjoyably.</p>

Additional information (optional)

You may choose to include further statements where relevant about:

Achievements against objectives set	Para 1.41	<p>From June 2021 (after the period of this report) Integrating began its transition back to live activities which are hoped to be fully operational by February 2022.</p> <p>In addition, Integrating has developed Inter-plus a daycare service for Young adults who no longer attend education.</p>
Performance of fundraising activities against objectives set	Para 1.41	<p>Fundraising has been very positive during this period with existing funders appreciating Integrating's efforts to continue support through web-based provision and being flexible in their funding.</p> <p>Central Government furlough payments have also helped to support the organisation.</p>
Investment performance against objectives	Para 1.41	Not applicable

Financial Review

Review of the charity's financial position at the end of the period	Para 1.21	<p>Integrating achieved income of:</p> <ul style="list-style-type: none">• Unrestricted £4043• Restricted £217097 <p>Expenditure</p> <ul style="list-style-type: none">• Unrestricted £2842• Restricted £70792 <p>Brought forward</p> <ul style="list-style-type: none">• Unrestricted £33153• Restricted £22410 <p>Carried forward</p> <ul style="list-style-type: none">• Unrestricted £34354• Restricted £168715• Total £203069
---	-----------	--

Statement explaining the policy for holding reserves stating why they are held	Para 1.22	Integrating holds a small reserve of about £30,000 together with a dynamic financial management policy, which ensures there are sufficient funds to ensure the organisation can operate for a year on current grant / contract income. Whilst the charity would like to develop a reserve fund which would allow six month's operations the trustees do not see there being a likelihood of being able to accrue this level of reserves in the foreseeable future. The charity has no long-term liabilities and has been able to operate on income from diverse sources and payment dates for many years.
Amount of reserves held	Para 1.22	£30,000
Reasons for holding zero reserves	Para 1.22	Not applicable.
Details of fund materially in deficit	Para 1.24	Not applicable
Explanation of any uncertainties about the charity continuing as a going concern	Para 1.23	Not applicable

Additional information (optional)

You may choose to include further statements where relevant about:

The charity's principal sources of funds (including any fundraising)	Para 1.47	Local authority contracts 59% Independent trusts 20% Local fundraising / donations 2% Carryover from previous year 20% This profile will dramatically change with the ending of a local authority contract and the return to local fundraising after lockdown.
Investment policy and objectives including any social investment policy adopted	Para 1.46	Not applicable
A description of the principal risks facing the charity	Para 1.46	a. Insufficient funds to maintain organisation

		<ul style="list-style-type: none"> • Fundraising drives three times each year • Respond to all opportunities for funding <p>b. Lose Full time posts</p> <ul style="list-style-type: none"> • Seek extension of funding
Other		

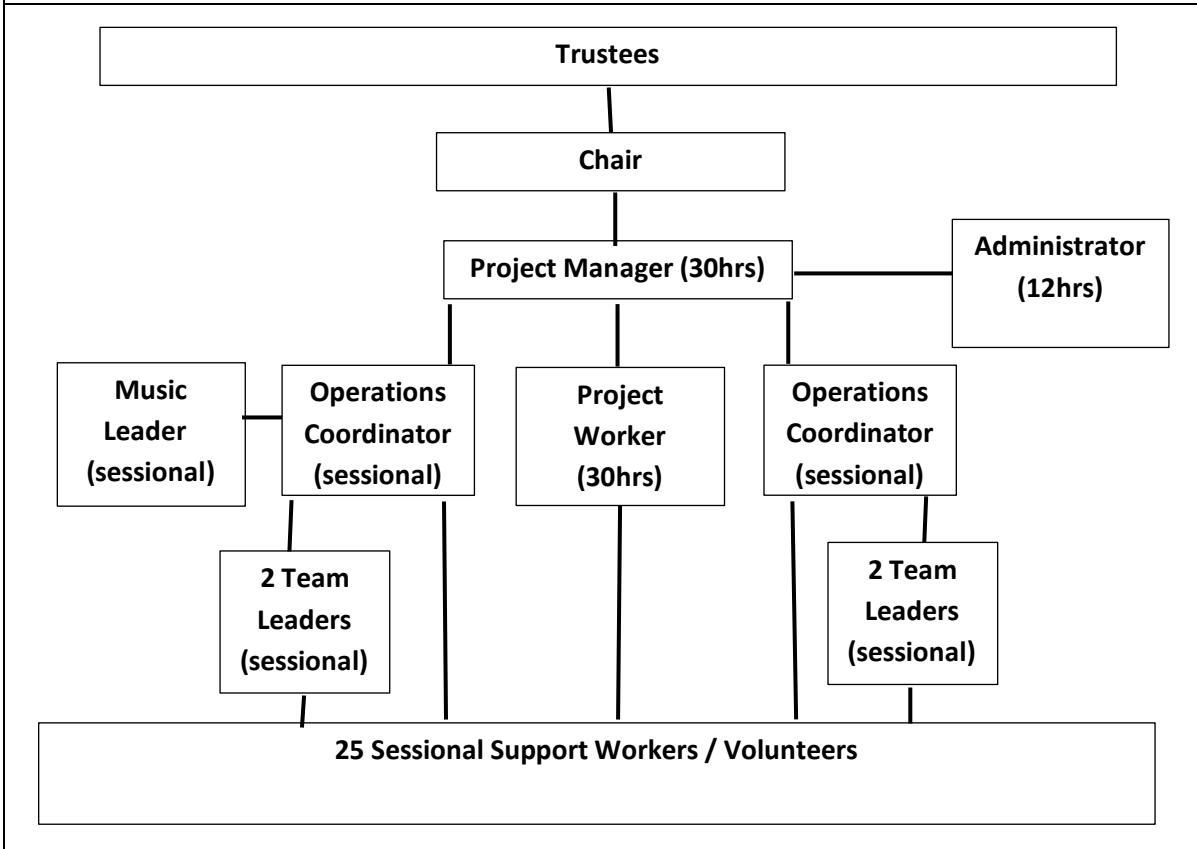
Structure, Governance and Management

Description of charity's trusts:		
Type of governing document (trust deed, royal charter)	Para 1.25	Constitution
How is the charity constituted?	Para 1.25	Incorporated registered charity
Trustee selection methods including details of any constitutional provisions e.g. election to post or name of any person or body entitled to appoint one or more trustees	Para 1.25	<p>The constitution requires the membership to elect the full board of trustees at the AGM each year.</p> <p>In reviewing the charity's selection methods it has been agreed that,</p> <ul style="list-style-type: none"> i. The board will review the groups strengths and needs in February each year and any potential vacancies. ii. Publicly advertise and recruit for appropriately qualified candidates. iii. Confirm any new trustees at AGM by membership.

Additional information (optional)

You may choose to include further statements where relevant about:

Policies and procedures adopted for the induction and training of trustees	Para 1.51	Integrating provides a full induction to all new trustees on appointment based largely around Charity Commission advice and the constitution of the organisation. Periodic refresher training is provided for trustees in both their role and operational matters such as safeguarding and the needs of children and young people with disabilities.
Relationship with any related parties	Para 1.51	Integrating does not have structural links with other organisations but does have relationships with: <ul style="list-style-type: none">• Parents / Carers – partnership• Local authority – contractual• Local organisations – delivery partnership
Other		



Reference and Administrative details

Charity name	Integrating Children
Other name the charity uses	Integrating Children and Young People
Registered charity number	1090260
Charity's principal address	Bullion Hall South Approach Chester le Street County Durham DH2 2DW

Names of the charity trustees who manage the charity

	Trustee name	Office (if any)	Dates acted if not for whole year	Name of person (or body) entitled to appoint trustee (if any)
1	Richard Taylor	Chair		Members
2	Sarah Warwick	Vice Chair		Members
3	Lynne Thompson	Treasurer		Members
4	Lucy Hinds	Secretary		Members
5	Julie Pattinson			Members
6	Paul Archer			Members
7	Elizabeth Burns			Members
8	Lucy Hinds			Members
9	Alison Laverick			Members
10	Jayne Oliver			Members
11				
12				
13				
14				

Corporate trustees – names of the directors at the date the report was approved – **Not applicable**

Name of trustees holding title to property belonging to the charity – **Not applicable**

Funds held as custodian trustees on behalf of others

Description of the assets held in this capacity	Not applicable
Name and objects of the charity on whose behalf the assets are held and how this falls within the custodian charity's objects	Not applicable
Details of arrangements for safe custody and segregation of such assets from the charity's own assets	Not applicable

Additional information (optional)


Name of chief executive or names of senior staff members (Optional information)

David Gaudie – Project Manager

Declarations

The trustees declare that they have approved the trustees' report above.

Signed on behalf of the charity's trustees

Signature(s)		
Full name(s)	Richard William Taylor	
Position (eg Secretary, Chair, etc)	Chair	

Date	11 th January 2021
-------------	-------------------------------

Integrating Children

**Financial Statements for the Period ended
31st March 2021**

Charity No: 1090260

***Community Accounting CIC
Pinetree Centre
Durham Road
Birtley
Co. Durham
DH3 2TD***

Integrating Children

CONTENTS

Statement of Financial Activities

Balance Sheet

Notes to the Financial Statements

Integrating Children

Statement of Financial Activities (including Income & Expenditure Account) For the Year ended 31st March 2021

	Unrestricted Funds 2021 £	Restricted Funds 2021 £	Total Funds 2021 £	Total Funds 2020 £
Incoming Resources				
Fund Raising and Donations	4,043		4,043	9,744
Grants		215,707	215,707	151,492
Income generated from Activities	0	1,390	1,390	10,821
Interest Received	0		0	0
Other Income	0		0	0
Total Incoming Resources	<u>4,043</u>	<u>217,097</u>	<u>221,140</u>	<u>172,057</u>
Resources Expended				
Direct Costs		6,217	6,217	29,300
Staffing Costs	0	59,094	59,094	122,338
Administration	2,842	5,481	8,323	13,926
Total Resources Expended	<u>2,842</u>	<u>70,792</u>	<u>73,634</u>	<u>165,564</u>
Net Incoming Resources	<u>1,201</u>	<u>146,305</u>	<u>147,506</u>	<u>6,493</u>
Transfer between Funds	0	0		
Total Funds Brought Forward	33,153	22,410	55,563	49,070
Total Funds Carried Forward	<u>34,354</u>	<u>168,715</u>	<u>203,069</u>	<u>55,563</u>

Integrating Children

Balance Sheet as at 31st March 2021

	2021 £	2020 £
Fixed Assets		
Tangible Fixed Assets	7,339	10,151
Current Assets		
Debtors		
Cash at Bank and in Hand	<u>196,010</u>	<u>45,662</u>
	196,010	45,662
Less		
Current Liabilities (Payable within one year)		
Accruals	<u>280</u>	<u>250</u>
Net Current Assets	195,730	45,412
Net Assets	<u>203,069</u>	<u>55,563</u>
Funded by		
Unrestricted Funds		
General		
Capital	7,339	10,451
Revenue	<u>27,015</u>	<u>22,702</u>
	34,354	33,153
Restricted Funds	168,715	22,410
Total Funds	<u>203,069</u>	<u>55,563</u>

Approved



Trustee

Date 10th December 2021

Integrating Children

Notes forming part of the Financial Statements to 31st March 2021

1) Accounting Policies

The principal accounting policies are summarised below. The accounting policies have been applied consistently throughout the year and in the preceding year.

a) **Basis of accounting**

The financial statements have been prepared under the historical cost convention in accordance with the Statement of Recommended Practice: Accounting and Reporting by Charities issued in March 2005.

b) **Revenue Grants**

Gross amount received as recognised within incoming resources and corresponding expense is shown with outgoing resources

c) **Taxation**

The charity is registered and exempt from taxation on its charitable activities

d) **Fixed Assets**

Fixed assets are stated at cost less accumulated depreciation. Depreciation is provided at rates calculated to write off the cost of each asset over its expected useful life.

Music and Office Equipment	15% Straight Line
Computer Equipment	15% Straight Line

Integrating Children

Notes forming part of the Financial Statements to 31st March 2021

2) Incoming Resources

Grants	Unrestricted	Restricted	Total 2021	Total 2020
The National Lottery		28,684	28,684	24,427
National Grant		0	0	2,750
County Durham Community		0	0	4,960
Ballinger Trust		7,912	7,912	7,912
Greggs Trust		15,000	15,000	15,000
Jos Strong Fraser Trust		1,000	1,000	
Durham County Council		163,111	163,111	96,443
	<u>0</u>	<u>215,707</u>	<u>215,707</u>	<u>151,492</u>

Income Generated from Activities

	Unrestricted	Restricted	Total 2021	Total 2020
Holiday Activities				6,765
Other Activities		1,390	1,390	4,056
	<u>0</u>	<u>1,390</u>	<u>1,390</u>	<u>10,821</u>

Integrating Children

Notes forming part of the Financial Statements to 31st March 2021

3) Resources Expended

Direct Costs	2021	2020		
Holiday Activities		18,755		
Other Activities	6,217	10,745		
	<u>6,217</u>	<u>29,500</u>		
Staff Costs				
No employee earned more than £60,000 durin the year	59,094	122,338		
Average no. of employees (including those in direct costs)	<u>5</u>	<u>11</u>		
Administration	Unrestricted	Restricted	Total 2021	Total 2020
Rent		930	930	6,933
Insurance		421	421	398
Postage			0	162
Sundries	30	4,130	4,160	3,621
Equipment			0	
Depreciation	2,812		2,812	2,812
	<u>2,842</u>	<u>5,481</u>	<u>8,323</u>	<u>13,926</u>

Integrating Children

Notes forming part of the Financial Statements to 31st March 2021

4) **Trustees Remuneration and Related Party Transactions**

No member of the management committee received any remuneration during the year.

5) **Tangible Fixed Assets**

	<u>Music & Office Equipment</u>	<u>Computer Equipment</u>	<u>Total</u>
Cost			
As at 1st April 2020	9,646	9,099	18,745
Additions			0
Disposals			0
As at 31st March 2021	<u>9,646</u>	<u>9,099</u>	<u>18,745</u>
Depreciation			
As at 1st April 2020	1,625	6,969	8,594
Charge for Year	1,447	1,365	2,812
Elimated on Disposal			0
As at 31st March 2021	<u>3,072</u>	<u>8,334</u>	<u>11,406</u>
NBV as at 31st March 2021	<u>6,574</u>	<u>765</u>	<u>7,339</u>
NBV as at 31st March 2020	<u>8,021</u>	<u>2,130</u>	<u>10,151</u>

6) **Creditors**

	2021	2020
Accounts	280	250
	<u>280</u>	<u>250</u>

Integrating Children

Notes forming part of the Financial Statements to 31st March 2021

7) Analysis of Net Assets between Funds

	General Funds	Restricted Funds	Total
Tangible Fixed Assets	7,339		7,339
Current Assets	27,295	168,715	196,010
Current Liabilities	(280)		(280)
	<u>34,354</u>	<u>168,715</u>	<u>203,069</u>

8) Movement of Funds

	As at 1st April 2020	Incoming Resources	Outgoing Resources	Transfers	As at 31st March 2021
The National Lottery	9,750	28,684	(9,750)		28,684
Ballinger Trust	1,977	7,912	(3,989)		5,900
Greggs Trust	8,750	15,000	(11,250)		12,500
Durham County Council		163,111	(45,803)		117,308
Jos Strong Fraser Trust Activities	1,933	1,390			3,323
Total Restricted	<u>22,410</u>	<u>217,097</u>	<u>(70,792)</u>	<u>0</u>	<u>168,715</u>
Unrestricted Funds					0
General Funds (Capital)	10,451		(2,812)	(300)	7,339
General Funds (Revenue)	22,702	4,043	(30)	300	27,015
					0
General Funds	<u>33,153</u>	<u>4,043</u>	<u>(2,842)</u>	<u>0</u>	<u>34,354</u>
Total Funds	<u>55,563</u>	<u>221,140</u>	<u>(73,634)</u>	<u>0</u>	<u>203,069</u>

Transfer of funds from Capital to Revenue represents the depreciation charge for the year

Community Accounting

North East CIC

Pinetree Centre, Durham Road, Birtley, Co.Durham,DH3 2TD
Tel. No. 0191 4928232

Integrating Children
Bullion Hall
South Approach
Chester - le - Street
DH2 2DW

Independent Examiner's Report

I report on the accounts of Integrating Children for the Year ended 31st March 2021

Respective Responsibilities of Trustees and Examiner

The trustees of the charity are responsible for the preparation of accounts; they consider that the audit requirement under section 144 of the Charities Act 2011 does not apply. I have been appointed under the Charities Act 2011 and report in accordance with the regulations made under section 145 of that Act. It is my responsibility to examine the accounts and statement, without performing an audit, and to report to the trustees.

Basis of Examiner's Statement

This report is in respect of an examination carried out in accordance with the directions given by the Charity Commissioners under the Act). An examination includes a review of the accounting records kept by the charity trustees and a comparison of the accounts presented with those records. It also includes a review of the accounts and making such enquiries as are necessary for the purpose of this report. The procedures undertaken do not constitute an audit.

Examiner's Statement

Based on my examination, no matter has come to my attention which gives me reasonable cause to believe, that in any material respect, accounting records have not been kept in accordance with section 130 of the Charities Act 2011. or that the accounts presented do not accord with those records or comply with the accounting requirements of the Charities Act 2011.

No matter has come to my attention in connection with my examination to which, in my opinion, attention should be drawn to enable a proper understanding of the accounts.

Terry Atkinson
Independent Examiner
21st October 2021