

# BEASLEY BACK DANE

England & Wales · Charity number 1089834

## Details

---

Status	Registered
Legal form	Charitable company
Company number	<a href="#">04323497</a>
Registered	2001-12-18
Register	<a href="#">View on the Charity Commission register</a>

## Contact

---

**Address**  
Back Dane Cottage  
Swythamley  
Rushton Spencer  
Macclesfield  
Cheshire  
SK11 0RF

**Phone** 01260 227636

**Email** [info@backdane.co.uk](mailto:info@backdane.co.uk)

**Website** [www.backdane.co.uk](http://www.backdane.co.uk)

## Activities

---

**Objects:** FOR SUCH CHARITIES OR CHARITABLE PURPOSES AS THE TRUSTEES SHALL FROM TIME TO TIME DECIDE AND IN PARTICULAR (BUT WITHOUT PREJUDICE TO THE GENERALITY OF THE FOREGOING) :- TO PROVIDE VOLUNTEERING OPPORTUNITIES AND TRAINING IN A SPIRIT OF FRIENDSHIP AND UNDERSTANDING, WITHOUT REGARD TO RACE, RELIGION, SEXUAL ORIENTATION/IDENTITY OR POLITICS.- TO PROVIDE EDUCATIONAL AND RECREATIONAL FACILITIES FOR: • DISADVANTAGED CHILDREN AND YOUNG PEOPLE • THOSE IN DISTRESS INCLUDING DISABLED CHILDREN AND ADULTS • THOSE FACING POVERTY • THE ELDERLY • REFUGEES - TO APPLY CONSIDERED ECOLOGICAL AND ENVIRONMENTAL PRINCIPLES TO OUR PROPERTY, GROUNDS AND SERVICES IN ORDER TO LIMIT THE ENVIRONMENTAL IMPACT OF OUR OPERATIONS

**Activities:** Tuesday Club, Derby for the benefit of mentally disadvantage adults supported by volunteers. Weekly Tuesday social event and a number of outings each year to entertainment or for weekends to Back Dane.Back Dane. A one time hill farm in Staffordshire. Provision of accomodation for young people from disadvantaged backgrounds, for groups supporting the welfare of disadvantaged adults, etc.

## Classification

---

- **How:** Provides Human Resources, Provides Buildings/facilities/open Space
- **What:** Disability, The Prevention Or Relief Of Poverty
- **Who:** Children/young People, People With Disabilities

## Geography

---

- Cheshire East
- Cheshire West & Chester
- Derbyshire
- Manchester City
- Staffordshire
- Stoke-on-trent City

## Finances

---

Period end	Income	Expenditure	Assets	Employees
2025-12-31	£8,118	£16,808	-	-
2024-12-31	£9,190	£24,724	-	-
2023-12-31	£10,605	£36,861	-	-
2022-12-31	£11,805	£34,674	-	-
2021-12-31	£34,919	£15,700	-	-
2020-12-31	£20,902	£25,302	-	-

## Trustees

Name	Role	Appointed
Atish Daya Jekison Jairaj Nana Chauhan		2026-04-25
DAVID JOHN EVANS		
JAMIE DAVIS		2013-01-15
Jonathan Abbott		2015-01-17
Kathleen Patricia Mitchell		2021-03-20
LINDA SPENCE		2013-01-15
Madeleine Jean Rutter		2026-04-25
Mark Smith		2026-04-25
RICHARD DAVIS		2013-01-15
Wendy Anne Pool		2020-06-18

**BEASLEY BACK DANE**

England & Wales - Charity number 1089834

---

# Accounts

---



# BEASLEY BACK DANE



## ANNUAL REPORT 2021

25<sup>th</sup> year of Beasley Back Dane

# **BEASLEY BACK DANE**

Charity Reg No 1089834  
Company No 4323497

## **The Charity's objects are:**

1. To provide volunteering opportunities and training in a spirit of friendship and understanding, without regard to race, religion, sexual orientation/ identity or politics.
2. To provide educational and recreational facilities for:
  - Those in distress including disabled children and adults
  - Those facing poverty
  - The elderly
  - Refugees
  - Disadvantaged children and young people
3. To apply considered ecological and environmental principles to our property, grounds and services in order to limit the environmental impact of our operations.

## **The Trust's activities can be split into 5 areas:**

**Back Dane as a Venue for Trust's Own Holidays.** Our active volunteers and trustees organise a programme of visits to Back Dane. Working with schools and other bodies, we provide short breaks for groups of disadvantaged young people. Lots of walks and other outdoor activities as well as art and craft work when the weather is challenging.

- **Back Dane as a Venue for Partnership Holidays.** As well as running our own holidays, we work in partnership with other organisations working to challenge poverty and disadvantage in their own fields. We actively encourage and support like-minded groups to add residential visits to Back Dane to their repertoire of activities. Whatever resources they initially lack in running holidays, we help with volunteers, transport, use of bedding and outdoor clothing, insurance cover, indeed, in fact just about any impediment to them using Back Dane.

An example would be BLAST, from South Staffordshire, who provide support for families with children with autism. In the case of Derby City Council's Leaving Care Team – supporting care experienced young people – we effectively “subsidised” the council by meeting the costs of their first visit as they simply didn't have a “budget heading” – that is not until, working with some of their staff, the value of such activities was recognised. We have supported visits by groups of refugees – Wakefield City of Sanctuary, Doncaster Conversation Club amongst others, often with active and financial support from Cities and Areas of sanctuary.

- **Back Dane as a Venue for Others to Hire.** We also hire out our premises, at moderate charges, to other charities whose aims and objectives are in line with our own. These visits support ex-service men and women – Combat Stress, care experienced people – Under-The-Sky and The National House Project and many others.
- **Back Dane as a Venue for Volunteering.** We run a regular programme of volunteering weekends at Back Dane. The emphasis here is either improving and maintaining the fabric of our premises or developing our care for the environment in the grounds and woodland surrounding our cottage. These volunteers also provide valuable support to our own and “partnership” holidays. We have recently received a substantial grant from The National Lottery to help us in our continuing ambition to make our volunteer offer more inclusive.
- **The 'Tuesday Club'.** The Trust runs a weekly club for adults with learning difficulties at St Augustine's Church in Derby, with occasional outings and trips.

Details of these activities carried out in the past year are described in this report.

# Beasley Back Dane

## Trustees 2021

Alison Weston	to March 2021	Chair
Dave Evans	from March 2021	Secretary/ Tuesday Club organiser
Wendy Pool	from July 2020	Treasurer
Dave Gordon	from March 2019	Vice Chair/Bookings Co-ordinator
Rick Davis	from March 2019	Partnership Holiday Organiser
Linda Spence	from March 2020	Trust's Own Holiday Organiser
Elaine Johnson	from March 2021	Trust's Own Holiday Organiser
Jamie Davis	from March 2020	Environmental Organiser
Stan Harrison	from March 2021	
Jonathon Abbott	from March 2021	
Phillipa Joyce	from March 2019	
Kate Mitchell	from March 2021	
Jean Davis	to March 2021	
Mick Jones	to March 2021	

There can be a maximum of 14 trustees and a minimum of 7.

All trustees have a three year period of office, thereafter they require re-appointment.

## Regular events

### Trust's Own Holidays

Volunteers host inner city children at Back Dane and help other good causes stay at Back Dane (eg by provision of manpower and other resources)

### Improvement Weekends at Back Dane.

Volunteering weekends to maintain the cottage and the grounds.

### Tuesday Club

A lively club for adults with learning difficulties.

## For more information

Web site: [www.backdane.co.uk](http://www.backdane.co.uk)

Email: [info@backdane.co.uk](mailto:info@backdane.co.uk)

Bookings: [backdane@gmail.com](mailto:backdane@gmail.com)

## List of Back Dane Trust Sub-Committees 2021

<u>Bookings sub-committee:</u> - Dave Cordon (lead) - Rick Davis - Jamie Davis	<u>Environment sub-committee:</u> - Jamie Davis (lead) - Jonathan Abbott - Alison Weston - Kate Mitchell - Paul Finn
<u>Volunteering sub-committee (incl. Tuesday Club):</u> - Rick Davis (lead) - Jonathan Abbott - Dave Cordon - Jamie Davis - Dave Evans - Mick Jones	<u>Trust's Own Holidays &amp; Partnership Holiday sub-committee:</u> - Rick Davis (lead) - Linda Spence - Elaine Johnson - Jonathan Abbott - Kate Mitchell - Mick Jones
<u>Strategic planning sub-committee:</u> - Jamie Davis (lead) - Jonathan Abbott - Dave Evans - Kate Mitchell	<u>Safeguarding sub-committee:</u> - Rick Davis (lead) - Linda Spence - Mick Jones - Dave Evans
<u>Privacy sub-committee:</u> - Pippa Joyce (lead) - Dave Cordon - Rick Davis - Dave Evans	<u>Finance sub-committee:</u> - Wendy Pool (lead) - Dave Evans - Jonathan Abbott - Rick Davis - Dave Cordon
<u>Marketing &amp; Communications sub-committee:</u> - Jamie Davis (lead) - Rick Davis - Kate Mitchell - Jonathan Abbott	<u>Roll of Honour sub-committee:</u> - Dave Evans (lead) - Jamie Davis - Dave Cordon - Jean Davis
<u>Back Dane Maintenance sub-committee:</u> - Dave Cordon (lead) - Stan Harrison - Jonathan Abbott	<u>Archive sub-Committee:</u> - Dave Evans (lead) - Dave Cordon - Stan Harrison - Jamie Davis
<u>Governance sub-committee:</u> - Dave Evans (lead) - Kate Mitchell - Mike Wilmott - Chris Edwards - Jamie Davis - Rick Davis	<u>Safety, Insurance and Training Sub Group</u> - Dave Cordon (lead) - Elaine Johnson - Stan Harrison - Irene Knights - Jonathan Abbott - Jamie Davis - Rick Davis - Mick Jones

# Beasley Back Dane Strategy

In early 2020 the Board of Trustees carried out a participatory exercise in order to set the strategic direction of the Trust, and to identify and prioritise long-term goals and outcomes. A SWOT (strengths, weaknesses, opportunities, threats) and a risk analysis exercise were also undertaken. These enabled us to identify priority areas of focus.

The Trust reaffirmed its commitment and will to continue to meet its charitable objectives through four key areas of operation:

- Improvement Weekends i.e., volunteering maintenance weekends (IWs)
- Kids Weekends i.e., holidays hosted by the Trust (KWs)
- Partnership Holidays i.e., holidays hosted in partnership with another group (PHs)
- The Tuesday Club i.e., social club for adults with learning disabilities in Derby (TC)

In supporting and strengthening these four core areas, it was decided by all Trustees to concentrate primarily during the first two years on Back Dane's safety, facilities and access, volunteer recruitment and retention and financial self-sufficiency.

This strategy document and a separate detailed action plan have been developed, structured around the priority areas on which the Trust intends to focus and the long-term goals and outcomes identified by all Trustees. These two documents were adopted by the Board of Trustees on 20 March 2021. Progress reporting methods are also being developed by Trustees to allow the monitoring, measurement and refinement of the actions identified. The action plan and other supporting documents are stored separately for ease.

## THE TRUST'S VISION

To make a difference by providing valuable and diverse volunteering opportunities for all, and by working with partners and beneficiaries to alleviate the circumstances and promote the wellbeing of those experiencing poverty, disadvantage or distress.

## THE TRUST'S MISSION

To recognise and promote the importance of volunteering for its intrinsic value as much as its instrumental value.

To concentrate endeavours towards the most deserving sections of society in terms of disadvantage and inequality, and maximise the value that activities in these areas can provide.

To facilitate and promote learning and enjoyment of the natural environment, to conserve and enhance wildlife and habitats around Back Dane, and to pursue environmental sustainability across all our activities.

To achieve the highest possible quality of volunteering experience with due attention to the support, supervision, safety, skill development, satisfaction and enjoyment of volunteers.

To be proud of what Trust achieves, and to ensure a robust and representative organisational structure is in place that meets the Trust's charitable objectives, and safeguards its ability to continue to do so into the future.

*The full document can be found at <http://www.backdane.co.uk/objectives>*

## Secretary's Report

You may have noticed on the front cover that it says 25<sup>th</sup> year of Beasley Back Dane. Unfortunately Covid prevented any form of real celebration last year. For those of us who have been involved since before its inception, it doesn't seem that long. This has to be measured against the duration of its predecessor Derby IVS, which existed for 30 years, but in my mind seemed a far longer period comparatively.

Of course Covid greatly inhibited activities in 2021, with Back Dane closed until May and then limited in its occupancy by official restrictions until July. Even then there was great caution amongst our would-be visitors. Several groups who were keen to use the cottage were unwilling to take any risks with Covid. This was particularly the case with our own holidays for children, which didn't take place until well into Autumn. There is a report on this later.

Nonetheless the cottage was used by a number of groups, see the visitor list elsewhere in this report together with items out of the visitor's book. It is always pleasing to see the diversity of the groups visiting the cottage and the forging of links with these groups. There is always a great deal of behind the scenes forging of links with other groups and these culminate in our partnership holidays, where we provide varying levels of support to groups who wouldn't otherwise be able to visit the cottage. Support can take various forms, for instance, providing extra volunteers or subsidising elements of their stay, particularly transport. There is a report on these partnership holidays later.

A most unexpected link has been collaboration with Moorcroft pottery, who have created some new designs inspired by Back Dane and its environs. We will benefit with a percentage of the sales of the pieces with these designs. Examples of these designs are shown later in this report.

Although Covid stopped many things, it didn't stop nature. An aspect of our activities that has now become one of our principal objectives rather than an incidental aside is the environment around the cottage. We have always taken a great interest in the surroundings that we own. The woodland was planted in the 90's and is now reaching maturity. The sensory garden completed in 2020 is an amazing place. All of which needs very regular attention, not just maintenance but continuing development. We are very fortunate that there are volunteers who are willing and enthusiastic to undertake this. This work overlaps with the general maintenance and servicing of the cottage itself, again with a group of volunteers regularly doing this. There are reports on all these activities later. Our thanks to the Environment and Volunteering sub-committees and their teams. These teams have been alert in applying for various grants. We were delighted to have been granted £6,300 from The National Lottery Community Fund to support inclusive volunteering opportunities at Back Dane over the course 2021 until mid-2022. We are very pleased also to have successfully applied to receive match-funding to obtain items intended to conserve and enhance the natural heritage around Back Dane, and to enable our users to learn about and enjoy the nature and wildlife of the South West Peak District. Media and materials for this were purchased with support from the National Lottery Heritage Fund through the South West Peak Landscape Partnership. We were very grateful to Shelter Maintenance Ltd for a very generous donation of £3,000 to support Kids Weekends and Partnership Holidays.

Performing the aforementioned maintenance tasks was a problem in the first half of the year when the number of folks who could stay overnight was tightly regulated. Now that it is not such an issue, we would welcome anyone else interested in helping.

We can't help repeating references to Covid; in particular Covid had prevented us doing an official opening of the sensory garden when it was completed. However we decided to have one on 7<sup>th</sup> August. It had been decided that the sensory garden would be a memorial to John Foxcroft who passed away in 2020. Thus the official opening was also a memorial occasion for John, as

there had been no opportunity for one previously. About 30 folks came including members of John's family, on what was a wet and windy day, but everyone said that they were pleased that they had come. The occasion included the unveiling of a plaque for John on the building alongside the one for Dave Robinson, together with one's in the sensory garden and a further plaque for Dave Robinson. We were grateful to Graham Kirkham for unveiling the ones for John, and to John Anfield for unveiling the one for Dave. Pictures of the plaques are included later in this report.

Sadly a few weeks later, Margaret Foxcroft, John's widow, passed away. The funeral was a commemoration of both their lives. Margaret was a victim of Covid, not because she contracted it, but because she was in a home for the elderly and was unable to have the normal family interactions thus exacerbating her increasing dementia. A tribute to Margaret is included later in this report.

Back in Derby, the Tuesday Club resumed and there is a report on that later.

At the zoomed AGM in March, we welcomed Kate Mitchell as a new trustee. Kate was a member of the last family to live at Back Dane and there is an article by her later in this report. We welcomed also Elaine Johnson as a new trustee, but an old hand, having jointly run kid's weekends with Linda Spence since the days of Derby IVS.

Financially we are in very good shape, but, as with the world in general, we are experiencing a big increase in energy costs. We are looking at alternative energy forms, particularly for heating. There are innovative methods available, although they are still in their infancy, so we will have to pick an appropriate method at the appropriate time. We owe a very big thank you to Wendy Pool, our treasurer, for managing our finances so effectively when having to cope, not only with Covid issues, but with lots of personal issues in 2021 too.

Dave Evans

## **Groups using Back Dane 2021**

Under the Sky - multiple visits (support for care experienced people)  
Wincle Primary School (day visits)  
Rushton Primary School (day visits)  
Athac CIC (providing cultural access support services to children & young people)  
BLAST (families with autistic members)  
Upbeat Communities (supporting refugees)  
Trust own holidays for kids  
Duston Northampton Scouts  
National House Project (support for care experienced people)  
Wakefield City of Sanctuary (supporting refugees)  
Doncaster Conversation Club (supporting refugees)  
Lincolnshire Refugees Project  
East Lindsay Area of Sanctuary

## **Treasurer's Report: Year to 31 December 2021**

### **Financial Review**

#### **Achievement and performance**

Use of Back Dane in 2021 was limited for a second year due to the Covid-19 pandemic and the various lockdowns. Back Dane started opening up in April 2021 for day users and from late June 2021, groups were able to stay at the cottage. A refugee family as part of the inclusive volunteering programme benefited from support via the Lottery Fund Community Grant. Day visitors included Wincle, Rushton and Summerbank Academy Schools. Groups, with support from Back Dane, included Under The Sky, Althac, Blast, Doncaster Conservation Group, National House Project and City of Sanctuary. Duston Northampton Scouts stayed as paying guests. Kid's Weekends resumed in October 2021 as did the Tuesday Club in July of this year. Additionally, several environmental and routine Working Weekends were well-supported.

#### **Financial position**

Use of investment reserves was not required in 2021; any funded developments and ongoing activities were covered by cash reserves, grants and donations. The reserves are adequate to deal with any downturn in income due to the Covid-19 pandemic. The medium-term objective is to attract a higher level of grants, donations and letting income to ensure operating costs are fully recovered.

#### **Bookings**

Income from paid bookings in 2021 came on stream in July and amounted to £2,733 by the year end.

#### **Grants**

In March, we were awarded a Lottery Fund Community Grant of £6,300 for inclusive volunteering covering minibus hire and fuel, catering and refreshments, PPE for outdoor work and outdoor clothing and footwear for outdoor pursuits. It is planned to spend against the grant until June 2022. The charity also recognised £21,287 Government grants in the year resulting from continued lockdowns due to the Covid-19 pandemic in addition to Restart and Support Grants.

#### **Donations**

Generous income of £4,018 from donations was received by Back Dane in 2021; a proportion attracted a further £165 in Gift Aid.

#### **Reserves**

In early 2021, the Board of Trustees agreed to transfer investments to an Ethical Investment Fund which is more aligned to our charitable objectives. In April 2021, £25,000 was spent to purchase units in the COIF Ethical Investment Fund; in July 2021 the balance of £166,770 was transferred from the Charities Investment Fund to the Ethical Investment Fund. As at 31 December 2021, our reserves in the Ethical Investment Fund were £207,453; investment gains amounted to £29,530.

#### **The John Foxcroft Memorial Sensory Garden**

A sum of £245 was spent on memorial plaques erected in the sensory garden commemorating the lives of both John Foxcroft and David Robinson.

#### **Expenditure on charitable activities**

The Tuesday Club resumed in July.

Modest sums were spent on Kids' Weekends and Partnership Holidays as the Covid-19 restrictions continued to affect charitable operations.

#### **Support costs**

Repairs and maintenance expenditure in 2021 reflected building and electrical improvements, the addition of oil-filled radiators and replacement of bed linen/towels. Other costs included commission of a memorial stone for John Foxcroft and consultation to reduce energy costs. Additionally, appliances were purchased to facilitate laundry at Back Dane.

**Wendy Pool**

**27 March 2022**

## **Working (Improvement) weekends at Back Dane**

Organising working weekends at Back Dane during the latter part of the pandemic has been difficult but not impossible. There have been a lot of minor tasks to attend to as always just to keep the cottage in a serviceable and presentable condition. These tasks have been ably performed by some of our most valued volunteers such as Stan and Irene who incidentally have spent a lot of their time running back and forth to Back Dane to let in various trades people etc. Thank you to you both for all of the time and effort.

One of the major changes that we have brought in during the last year is a centralised store of regularly used consumables such as Tea, Coffee and cleaning products. The thinking behind this is to firstly reduce the amount of food etc that has to be bought and carried up to the cottage to operate, for example, our Kids Weekends and to make sure that the bare essentials are always on tap. So far this has been successful and has also given us the chance to steer people more towards environmentally friendly products. It is still a work in progress but with some fine tuning it should be a great success. We have also upgraded the laundry facilities and created a system where, for example, departing Kids Weekend groups aren't lumbered with taking the laundry home. I haven't had much feedback on this as yet but on the face of it, it seems to be working well.

A new initiative has been started during the last year to look at energy efficiency and more effective ways of heating Back Dane. A sub group has been formed and begun the process by having a heat survey done. This has identified a list of things we can do to mitigate heat loss and options for moving forward. This is a work in progress and we hope to be able to announce more detailed future plans in the not too distant future.

I would like to take the opportunity to thank all of those who have contributed to the working weekends at Back Dane over the last year and look forward to seeing more of you during 2022.

Dave Cordon (Vice Chair)

## **Kid's weekends**

The Back Dane Christmas Kids Weekend saw the children having great fun outdoors on a wet and very muddy walk and a trip to Tittesworth. Indoors it was Christmas dinner, opening presents under the tree, playing games and baking Christmas cupcakes.

The team have now had a planning meeting and are hoping to run four weekends in 2022. We are having a weekend in March to sort out and check equipment, risk assess new walks and plan activities. If anyone wishes to come along and help they are welcome.

Elaine Johnson and Linda Spence

## **PARTNERSHIP HOLIDAYS.**

As will be clear from our regular newsletters, and a list provided elsewhere in this report, our programme of partnership holidays has continued to be reduced in scope by the Covid pandemic. Although fewer in number, these visits have had some positive aspects. Not the least of these was the ingenuity employed in finding ways safely to support visits. A volunteer spending a supporting stay in her campervan was one such example. Another positive development was the way volunteers with primary interests in other areas of the work of the Trust rallied round in support – special thanks to those “Working Weekend” volunteers who took on additional tasks such as doing the laundry after visiting groups had left.

It is pleasing to report that, even in the difficult circumstances, we continued to find it possible to support groups on visits where residential stays were not part of their regular activities. This is one of the underlying themes of our “partnership” approach.

A real disappointment has been the realisation that the Under The Sky group, who provided such sensitive, activity based holidays for adult care experienced people, appears to have lost its major source of funding. I hope we will be able to work with the National House Project – another organisation supporting care experienced adults - to find ways to replicate some of the best aspects of Under The Sky’s approach.

It is difficult not to touch on one negative aspect of the past year. This is the extent to which the Covid pandemic has continued seriously to reduce the opportunities for our volunteers to be “embedded” in a supporting role in our partnership holidays. Even some volunteers of a very long standing had reported the experiences shared in visits such as those by the Lincolnshire Refugee Doctors Project, the “circle dance” by Castle Rock with refugees living in Wakefield or those amazing BLAST kids as highlights of their Back Dane experiences. Similarly, reviewing the list of those groups who, just prior to the arrival of Covid, had been looking to start visiting Back Dane is just a touch depressing. We have been doing our best to keep in contact with these groups and with luck, we may yet see many of them visit us in the not too distant future.

Rick Davis,  
Trustee.

## **NATIONAL LOTTERY GRANT.**

During the last year, we were fortunate enough to receive a grant of more than six thousand pounds from The National Lottery. The grant was to help us find ways in which to make our opportunities for volunteering, at Back Dane, more inclusive. The project recognises, for instance, the challenges faced in simply getting to Back Dane for those without their own cars. (And, as Linda is often quick to remind us, there is the need to be able to afford the extra wear and tear on cars of the challenging access to Back Dane.)

As well as subsidising transport and catering costs, the grant allows us to purchase “PPE” – both for working outdoors in all weathers and in supporting outdoor activities such as long hikes with groups of children even in mid-winter.

The hope, then, is to make volunteering at Back Dane no longer open only to “the reasonably affluent”. This whole process has helped us learn some valuable ways in which to improve our “volunteer offer”.



Rick Davis,  
Trustee.

## **Return of the Native\***

This was my first year as a trustee, though not in my connection with Back Dane. My family lived here in the 1950s and 60s. On the website, my mother's memories describe escaping the mod cons of Macclesfield to live where electricity was a distant dream and running water came from the river. The house was part of the Swythamley estate, my father worked for Sir Philip, and when the opportunity came to rent their own smallholding, we left. Back Dane remained the happy place of childhood memories. At various times down the decades, I saw the house become first a scout property, then practically derelict, before slowly turning into the project we now know. A few years ago, I took my family to visit the refurbished house: my brother's long-lost dinky truck had re-surfaced, the stairs had been moved, the lavatory was now a barbecue, and parts of the cast iron range were lying amongst the gorse; but the 'parlour', my parents' bedroom above it, and the cart shed where our dad spent most of his leisure time, all retained the essence that we recognised from our early home. The trustees invited me to participate in the official opening of the house; subsequently I brought families from City of Sanctuary projects for holidays, and was invited to join the Board.

A pandemic is a strange time to start working with a holiday charity. Yet, despite our activities being limited, it has been interesting and enjoyable to get to know how the Trust ticks and how I might contribute, from supporting holidays for families under stress, to liaising with Moorcroft in their design of the exciting new Back Dane Collection; from learning (via YouTube) how to weave the willow arch, to finding my way through strategic plans and policies. There are key differences marking out Back Dane from other organisations I have worked with. Most trustees are also active volunteers, ensuring the Board has detailed knowledge and engagement with day-to-day issues. Teamwork is central to the project's smooth running: groups of volunteers arrive at regular intervals and focus on a list of priorities, improving the environment or the property; or bringing groups to stay, organising activities, ensuring everyone takes away a good memory. The trustees meantime quietly and effectively get on with the business of governance. Everyone I have met has been committed, skilled and determined. Back Dane exists as much for the volunteers as for the beneficiaries: the mission statement describes that balance; the Trust is designed for volunteers to take the opportunities to acquire knowledge, skills and confidence, as well as giving to beneficiaries so they may find a place of sanctuary and welcome. It is above all a place for unconditionally giving and freely receiving and I am proud to be a part of it.

Kate Mitchell

\* with apologies to Thomas Hardy

## Items from the Back Dane visitor's book

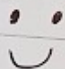
my favorite Part of the day was getting up my bed  
and the adults cared about and we made some stuff  
I hope we can do it again

IT was a good <sup>by Josie</sup> time  
Hope we did loads OF ACTIVITIES  
FROM JOSIE

5/9 - 7/9 We at Care leavers  
National Movement have CLNM  
had an awesome Age 17-20  
time. The location is (10 guests)  
beautiful and we actually  
enjoyed the break away  
from our phones!!  
Sam has been fab and  
were excited to come  
back. Thank you  
Love  
CLNM xxx

Date	Comments	Name
13-15 August 21	To start it was really sun we went on walks and had delicious yummy yummy food. I even enjoyed when we had to go on the steep and downhill walk. For other people I hope you enjoy as well and I met new lovely people.	Saraana 10yrs

Enjoy 😊

Date	Comments	Name / Org
31/05/21	<p>First of all we are really grateful to Kate <del>and</del> to give us this opportunity to visit Backdane Cottage once again. We met Rick and Jamie who are really nice and friendly. We really enjoyed gardening and planting the trees with Jamie. Everyone is very friendly, welcoming and supportive here. This place is so beautiful, enjoyable and full of nature.</p> <p>There are all facilities in the Cottage. Our kids have a thought that they have a holiday house where they spend their holidays and Kate lives there inside her Van. Now they have been asking about Jamie.</p> <p>We met Steve and Erene by chance, they are very nice and friendly. We are hoping and willing to meet more volunteers working for Backdane Cottage. We are very thankful to Kate for giving us an opportunity to <del>be</del> join the team of volunteers. We are determined to fulfil our duties as volunteers.</p>	<p>Abdul Rehman Erum Moiz &amp; Abdullah</p>
	<p>Big Thank to Everyone</p>	
		

DATE	Comments	NAME
13/8-15-8	<p>we enjoyed a lot. we had a nice time here with the brilliant volunteers. The people are so good.</p>	<p>Yogeshwaran Age - 37</p>



woodland wildflowers. The wood from the felled trees isn't wasted. Some goes for firewood, or for activities such as shelter building, but the majority provides the dead wood essential for a viable functioning woodland habitat. It has also given us material for the woven brush fence around the story-telling circle.

We are also very pleased to have successfully received match-funding to obtain items to conserve and enhance the natural heritage around Back Dane, and to enable our users to learn about and enjoy the nature and wildlife of the South West Peak District.

We have purchased woodland ground flora, wetland and meadow wildflower seeds, wildlife rubbing plaques, mud kitchen equipment, and laminated wildlife educational guides as part of the project, produced with support from the National Lottery Heritage Fund through the South West Peak Landscape Partnership.



Much of this equipment will better enable Back Dane's users and beneficiaries to learn about, appreciate and enjoy nature and wildlife, while the specially selected seed mixes will enable habitats to be maintained and enhanced.



The Pied Flycatchers that have become annual visitors took up nest again across our land and the chicks were rung by some local volunteers to whom we are very grateful. Barn Owls successfully breeding in the box put up two years ago was one of the highlights of the year, and three healthy male chicks were rung by the excellent volunteers of Staffordshire Barn Owl Action Group. The wildlife cameras continue to capture Badgers, Foxes and Red Deer, as well as Stoats, Jays and Long-tailed Tits. Other recent highlights include sightings of Goldcrests, Kingfishers, Mergansers, and of course the local pair of Great Spotted Woodpeckers!

There are a whole variety of opportunities for any volunteers interested in getting involved in outdoor work in the environment around Back Dane, from planting trees and woodland management, to habitat creation, wildlife monitoring, restoring dry stone walls and much more. If you are interested then please do not hesitate to get in touch.



Jamie Davis

## Tuesday Club

Over recent years there has been a tradition of an outdoor visit to a local pub (the Oast House) in July, except of course in 2020. So with the official relaxation of restrictions, we resumed the club on 20<sup>th</sup> July 2021 (having suspended it on March 17<sup>th</sup> 2020) by meeting at the pub, on what, fortunately, was a fine evening. Members, friends and family came along and a lot of catching up with each other took place, most members not having seen each other for 16 months.

Sadly part of the catching up was discovering that one of our longest serving members (probably over 40 years), Susan Bagshaw, had recently passed away. Mick Jones and I had attended the funeral, where it was gratifying to hear the number of references to our club and its outings. On occasions like that it brings it home just how much we mean to some of our members. There was further sadness in September with the death of Susan's mother, Lily, who was in her 90's. Susan's sister, Christine, still comes to the club, but it is sadly strange seeing her on her own now.

All the previous members returned and we have 15-20 folks in total each week now. However it is very different at the club with its seating separated out and with plastic partitions. This has made our traditional group activities a little more awkward but necessarily so. Bingo and dominoes have continued, but pass the parcel was obviously inappropriate.

It was also inappropriate to organise any outings for the second year running. However we did organise a Christmas dinner at the Blue Peter, where around 30 folks attended.

Susan's and Lily's funerals reminded us how much those outings mean to them and this has been reinforced by the frequent enquiries about 2022 outings, even at the Christmas dinner. So we will plan some again for 2022.

In the year's leading up to 2021, I had been looking forward to celebrating my 50<sup>th</sup> anniversary of involvement with Tuesday Club in February 2021, but of course Covid wrecked those intentions. Therefore, technically, that postpones my celebration for 16 months.

My thanks to Mick Jones for his assistance each week and to St Augustine's Church for accommodating us for over 30 years.

Dave Evans (club leader)



Susan Bagshaw (1955- 2021)

## Back Dane inspired Moorcroft pottery

Last year, we were intrigued to be contacted by Moorcroft Pottery, with an offer to explore the potential for designing a collection of art pottery with a Back Dane theme. An independent pottery based in Burslem, Moorcroft has been famous for over a century, enjoying a worldwide reputation for its art pottery, using heritage craft techniques and a talented team of designers. During the summer, we met with the Moorcroft designers to show them around Back Dane. While talking about the Trust's values and how we work, we toured the woodland, meadow, and riverside setting, introducing the diverse natural habitat with its native species of flora and fauna. Wildflowers tinted the meadows and flowed over drystone walls; and the river tumbled alongside the cliff, creating a backdrop for the steep, wooded Clough valley and beyond, the purple tip of Shutlingsloe. A pair of pied flycatchers greeted us.



Back Dane (reverse)



Back Dane



Bird's Foot Trefoil



Pied Wagtails



Redstarts (left)



Redstarts (centre)



Redstarts (right)



Where foxes dare (reverse)



Where foxes dare

## **Margaret Foxcroft (1942-2021)**



Margaret Foxcroft passed away peacefully on 23rd September 2021.

Margaret was a much loved wife to her late husband John Foxcroft, supporting him in all of his endeavours. She was also a loving mother, grandmother and kind hearted friend. Margaret taught across schools in Derby throughout her life supporting many children and families during her career.

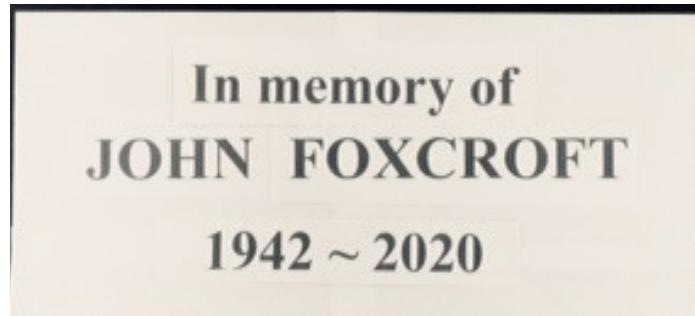
John and Margaret met through their involvement with the Derby branch of International Voluntary Service which John had founded. Derby IVS was the precursor of the Back Dane Trust. In Derby IVS, Margaret was involved particularly with disadvantaged children, including going on the organised camping weekends for them.

John and Margaret were married in April 1971 and notably spent many hours driving miles through Derbyshire and Staffordshire to find a property that could be an outdoor centre for use by the group for those in need, or those who are disadvantaged in some way. That search resulted in their finding Back Dane which Derby IVS initially rented then, after an accidental fire, purchased and restored.

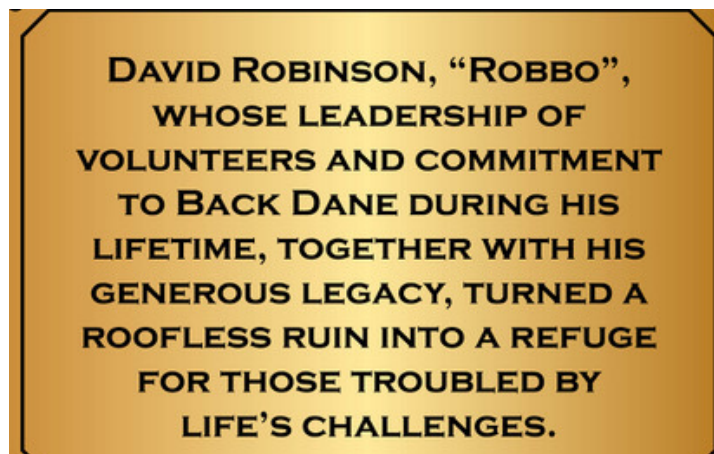
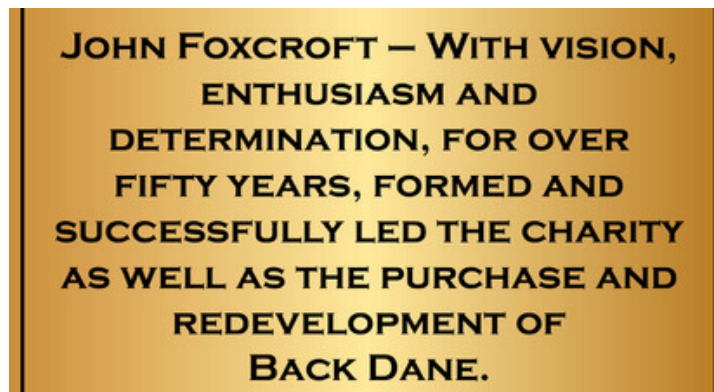
Margaret will be greatly missed by all who knew her. Hundreds of visitors to Back Dane in the past, present and the future will benefit from the endeavours of John and Margaret in finding such a special place.

## **Plaques unveiled on August 7<sup>th</sup> 2021**

**On the wall of the cottage**



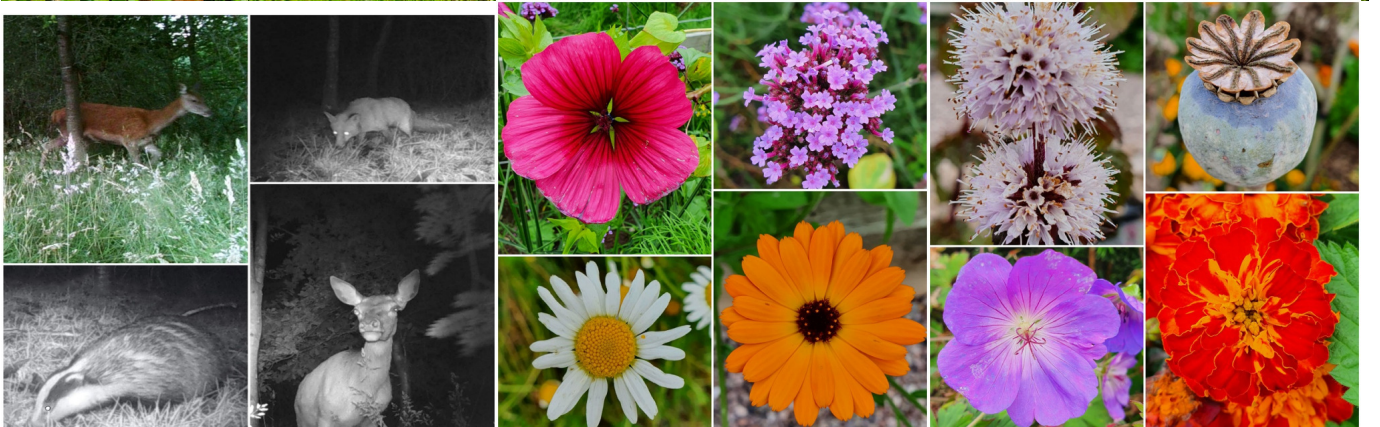
**In the sensory garden**



## Back Dane Income & Expenditure Accounts for the Year to 31 December 2021

Balance as at 31 December	Account	2020	2021
	Barclays Deposit Account	0	
	Barclays Current Account	23,151	19,509
		<u>23,151</u>	<u>19,509</u>
	CCLA Investment Account	<b>153,103</b>	<b>207,453</b>
<b>Income</b>			
	Back Dane Booking Income	0	2,733
	Donations incl Gift Aid	3,840	4,183
	Membership subscriptions	290	415
	Grants		
	Alpkit	334	0
	Lottery Fund Community Grant	0	6,300
	Shell	350	0
	SMDC	12,883	21,287
	SWP	3,192	0
	Bank interest & dividends	0	0
	Miscellaneous revenue	13	1
	Tuesday Club outings contribution	0	0
		<u>20,902</u>	<u>34,919</u>
<b>Expenditure</b>			
	Accounting fees	1,440	1,440
	Administrative/sundry expenses	470	519
	Appliances and Equipment	0	850
	Alpkit grant-water butts/compost bins	324	0
	Garden & woodland maintenance		
	General	25	346
	Sensory garden	1,583	245
	Improvement Weekends	314	427
	Insurance	1,645	1,570
	Raising funds (fees for investment)	0	0
	Lottery Grant	0	428
	Consumables for Back Dane	0	531
	Repairs and maintenance		
	Curtains	1,287	0
	Defibrillator	0	0
	Borehole & AED electrics	4,814	0
	Electrical Improvements	1,821	0
	General	1,995	5,820
	Track (joint maintenance)	0	0
	Woodburner installation	1,533	0
	SWP grant	4,697	0
	Trust's Own Holidays		
	Kids' Weekends	73	486
	Partnership Holidays	161	100
	Tuesday Club		
	Coach hire/outings	0	0
	St Augustine's hire	255	490
	Rates	0	74
	Utilities		
	Electricity	2,687	2,289
	Telephone	178	87
		<u>25,302</u>	<u>15,702</u>
	<i>Rounding error</i>		<b>2</b>
<b>Income less expenditure</b>		<u><b>-4,400</b></u>	<u><b>19,219</b></u>
	Depreciation	-11,000	-11,000
	Net gains on investments	13,648	29,350
<b>As per SOFA</b>	<b>Net income/(expenditure)</b>	<u><u><b>-1,752</b></u></u>	<u><u><b>37,569</b></u></u>
<b>Note</b>			
<b>Freehold land and property</b>			
Valuation in 2018		750,000	
Net book value 31 December 2020		728,000	
Depreciation charge for year 2021		-11,000	
Net book value 31 December 2021		<u><u>717,000</u></u>	

# Back Dane Environment



# Activities at Back Dane



REGISTERED COMPANY NUMBER: 04323497 (England and Wales)  
REGISTERED CHARITY NUMBER: 1089834

**Report of the Trustees and**  
**Unaudited Financial Statements**  
**for the Year Ended 31 December 2021**  
**for**  
**Beasley Back Dane**

Bates Weston LLP  
Chartered Accountants  
The Mills  
Canal Street  
Derby  
DE1 2RJ

**Beasley Back Dane**

**Contents of the Financial Statements  
for the Year Ended 31 December 2021**

	<b>Page</b>
<b>Report of the Trustees</b>	1 to 3
<b>Independent Examiner's Report</b>	4
<b>Statement of Financial Activities</b>	5
<b>Balance Sheet</b>	6 to 7
<b>Notes to the Financial Statements</b>	8 to 13

## **Beasley Back Dane**

### **Report of the Trustees** **for the Year Ended 31 December 2021**

The trustees who are also directors of the charity for the purposes of the Companies Act 2006, present their report with the financial statements of the charity for the year ended 31 December 2021. The trustees have adopted the provisions of Accounting and Reporting by Charities: Statement of Recommended Practice applicable to charities preparing their accounts in accordance with the Financial Reporting Standard applicable in the UK and Republic of Ireland (FRS 102) (effective 1 January 2019).

#### **OBJECTIVES AND ACTIVITIES**

##### **Objectives and aims**

- To provide volunteering opportunities and training in a spirit of friendship and understanding, without regard to race, religion, sexual orientation/identity or politics.
- To provide educational and recreational facilities for:
  - o Disadvantaged children and young people
  - o Those in distress including disabled children and adults
  - o Those facing poverty
  - o The elderly
  - o Refugees
- To apply considered ecological and environmental principles to our property, grounds and services in order to limit the environmental impact of our operations.

The Trust's activities can be split into 5 areas:

- Back Dane as a Venue for Others to Hire
- Back Dane as a Venue for Others to Hire with help from our Trustees (called Partnership Holidays)
- Back Dane as a Venue for the Kids' Weekends
- Back Dane as a Venue for Volunteering
- The 'Tuesday Club'

##### **Public benefit**

These aims and objectives are pursued through the management and development of Back Dane, a converted hill farm used by worthy causes, The Tuesday Club, and outings for deserving children.

The Trustees have considered their duties under section 3 of the Charities Act 2011 and have determined that they have complied with their duty to have due regard to the Charity Commission's guidance on public benefit, when pursuing the charity's aims and objectives.

##### **Volunteers**

The charity is currently managed by trustee volunteers who give their time on a voluntary basis to manage the various activities.

#### **ACHIEVEMENT AND PERFORMANCE**

Use of Back Dane in 2021 was limited for a second year due to the Covid-19 pandemic and the various lockdowns. Back Dane started opening up in April 2021 for day users and from late June 2021, groups were able to stay at the cottage. A refugee family as part of the inclusive volunteering programme benefited from support via the Lottery Fund Community Grant. Day visitors included Wincle, Rushton and Summerbank Academy Schools. Groups, with support from Back Dane, included Under The Sky, Althac, Blast, Doncaster Conservation Group, National House Project and City of Sanctuary. Duston Northampton Scouts stayed as paying guests. Kid's Weekends resumed in October 2021 as did the Tuesday Club in July of this year. Additionally, several environmental and routine Working Weekends were well-supported.

#### **FINANCIAL REVIEW**

##### **Financial position**

The Trust holds £218,535 in free reserves at the balance sheet date, an increase of £42,697 on the prior year. Restricted funds total £5,872 at the same date, whereas none were held at the previous year end. Further analysis is available in the notes to the financial statements.

Use of investment reserves was not required in 2021; any funded developments and ongoing activities were covered by cash reserves, grants and donations. The reserves are adequate to deal with any downturn in income due to the Covid-19 pandemic. The medium-term objective is to attract a higher level of grants, donations and letting income to ensure operating costs are fully recovered.

## **Beasley Back Dane**

### **Report of the Trustees** **for the Year Ended 31 December 2021**

#### **FINANCIAL REVIEW**

##### **Reserves policy**

The Trust uses the income from visiting groups to offset the costs of running the building. Any excess income will be added to investment interest or 'draw down' and deployed on projects such as the improvement work and specific Trust-led activities eg the Tuesday club and the Trust's own (self-managed) holidays.

#### **STRUCTURE, GOVERNANCE AND MANAGEMENT**

##### **Governing document**

The charity is controlled by its governing document, a deed of trust, and constitutes a limited company limited by guarantee, as defined by the Companies Act 2006.

Beasley Back Dane is a registered charity and is a company limited by guarantee and not having a share capital. The memorandum and articles of association define the scope of activity.

##### **Recruitment and appointment of new trustees**

Trustees are appointed from the membership in accordance with the governing documents.

##### **Organisational structure**

The trustees meet at least three times a year and sub-committees led by trustees manage the various activities on behalf of the trustees and report to the trustees.

##### **Induction and training of new trustees**

The membership appoints trustees who they consider to have the qualities and experience necessary for them to act as trustees.

#### **REFERENCE AND ADMINISTRATIVE DETAILS**

##### **Registered Company number**

04323497 (England and Wales)

##### **Registered Charity number**

1089834

##### **Registered office**

The Mills  
Canal Street  
Derby  
DE1 2RJ

##### **Trustees**

D N Cordon  
J Davis  
J Davis (resigned 20.3.2021)  
R G Davis  
L Spence  
J Abbott  
S K Harrison  
D J Evans  
M Jones (resigned 20.3.2021)  
A Weston (resigned 20.3.2021)  
P Joyce  
W A Pool  
E Johnson (appointed 24.4.2021)  
K P Mitchell (appointed 20.3.2021)

##### **Company Secretary**

D J Evans

**Beasley Back Dane**

**Report of the Trustees**  
**for the Year Ended 31 December 2021**

**REFERENCE AND ADMINISTRATIVE DETAILS**

**Independent Examiner**

Bates Weston LLP  
Chartered Accountants  
The Mills  
Canal Street  
Derby  
DE1 2RJ

Approved by order of the board of trustees on 2 April 2022 and signed on its behalf by:

D N Cordon - Trustee

**Independent Examiner's Report to the Trustees of  
Beasley Back Dane**

**Independent examiner's report to the trustees of Beasley Back Dane ('the Company')**

I report to the charity trustees on my examination of the accounts of the Company for the year ended 31 December 2021.

**Responsibilities and basis of report**

As the charity's trustees of the Company (and also its directors for the purposes of company law) you are responsible for the preparation of the accounts in accordance with the requirements of the Companies Act 2006 ('the 2006 Act').

Having satisfied myself that the accounts of the Company are not required to be audited under Part 16 of the 2006 Act and are eligible for independent examination, I report in respect of my examination of your charity's accounts as carried out under section 145 of the Charities Act 2011 ('the 2011 Act'). In carrying out my examination I have followed the Directions given by the Charity Commission under section 145(5) (b) of the 2011 Act.

**Independent examiner's statement**

I have completed my examination. I confirm that no matters have come to my attention in connection with the examination giving me cause to believe:

1. accounting records were not kept in respect of the Company as required by section 386 of the 2006 Act; or
2. the accounts do not accord with those records; or
3. the accounts do not comply with the accounting requirements of section 396 of the 2006 Act other than any requirement that the accounts give a true and fair view which is not a matter considered as part of an independent examination; or
4. the accounts have not been prepared in accordance with the methods and principles of the Statement of Recommended Practice for accounting and reporting by charities (applicable to charities preparing their accounts in accordance with the Financial Reporting Standard applicable in the UK and Republic of Ireland (FRS 102)).

I have no concerns and have come across no other matters in connection with the examination to which attention should be drawn in this report in order to enable a proper understanding of the accounts to be reached.

Wayne Thomas ACA  
Bates Weston LLP  
Chartered Accountants  
The Mills  
Canal Street  
Derby  
DE1 2RJ

12 April 2022

**Beasley Back Dane**

**Statement of Financial Activities  
(Incorporating an Income and Expenditure Account)  
for the Year Ended 31 December 2021**

		Unrestricted fund	Unrestricted building fund	Restricted fund	2021 Total funds £	2020 Total funds £
	Notes	£	£	£	£	£
<b>INCOME AND ENDOWMENTS FROM</b>						
Donations and legacies	2	25,885	-	6,300	32,185	20,889
Other trading activities	3	2,733	-	-	2,733	-
Investment income	4	-	-	-	-	5
Other income		1	-	-	1	8
<b>Total</b>		<u>28,619</u>	<u>-</u>	<u>6,300</u>	<u>34,919</u>	<u>20,902</u>
 <b>EXPENDITURE ON Charitable activities</b>						
Child Outings / Back Dane		15,272	11,000	428	26,700	36,302
Net gains on investments		<u>29,350</u>	<u>-</u>	<u>-</u>	<u>29,350</u>	<u>13,648</u>
<b>NET INCOME/(EXPENDITURE)</b>		42,697	(11,000)	5,872	37,569	(1,752)
 <b>RECONCILIATION OF FUNDS</b>						
<b>Total funds brought forward</b>		175,838	728,000	-	903,838	905,590
<b>TOTAL FUNDS CARRIED FORWARD</b>		<u><u>218,535</u></u>	<u><u>717,000</u></u>	<u><u>5,872</u></u>	<u><u>941,407</u></u>	<u><u>903,838</u></u>

The notes form part of these financial statements

**Beasley Back Dane****Balance Sheet  
31 December 2021**

	Notes	Unrestricted fund £	Unrestricted building fund £	Restricted fund £	2021 Total funds £	2020 Total funds £
<b>FIXED ASSETS</b>						
Tangible assets	8	-	717,000	-	717,000	728,000
Investments	9	207,454	-	-	207,454	153,103
		<u>207,454</u>	<u>717,000</u>	<u>-</u>	<u>924,454</u>	<u>881,103</u>
<b>CURRENT ASSETS</b>						
Debtors	10	602	-	-	602	1,565
Cash at bank		13,636	-	5,872	19,508	23,151
		<u>14,238</u>	<u>-</u>	<u>5,872</u>	<u>20,110</u>	<u>24,716</u>
<b>CREDITORS</b>						
Amounts falling due within one year	11	(3,157)	-	-	(3,157)	(1,981)
		<u>11,081</u>	<u>-</u>	<u>5,872</u>	<u>16,953</u>	<u>22,735</u>
<b>NET CURRENT ASSETS</b>						
		<u>11,081</u>	<u>-</u>	<u>5,872</u>	<u>16,953</u>	<u>22,735</u>
<b>TOTAL ASSETS LESS CURRENT LIABILITIES</b>						
		<u>218,535</u>	<u>717,000</u>	<u>5,872</u>	<u>941,407</u>	<u>903,838</u>
<b>NET ASSETS</b>						
		<u>218,535</u>	<u>717,000</u>	<u>5,872</u>	<u>941,407</u>	<u>903,838</u>
<b>FUNDS</b>						
	12					
Unrestricted funds					935,535	903,838
Restricted funds					5,872	-
<b>TOTAL FUNDS</b>						
					<u>941,407</u>	<u>903,838</u>

The charitable company is entitled to exemption from audit under Section 477 of the Companies Act 2006 for the year ended 31 December 2021.

The members have not required the company to obtain an audit of its financial statements for the year ended 31 December 2021 in accordance with Section 476 of the Companies Act 2006.

The trustees acknowledge their responsibilities for

- ensuring that the charitable company keeps accounting records that comply with Sections 386 and 387 of the Companies Act 2006 and
- preparing financial statements which give a true and fair view of the state of affairs of the charitable company as at the end of each financial year and of its surplus or deficit for each financial year in accordance with the requirements of Sections 394 and 395 and which otherwise comply with the requirements of the Companies Act 2006 relating to financial statements, so far as applicable to the charitable company.

**Beasley Back Dane**

**Balance Sheet - continued**

**31 December 2021**

These financial statements have been prepared in accordance with the provisions applicable to charitable companies subject to the small companies regime.

The financial statements were approved by the Board of Trustees and authorised for issue on 2 April 2022 and were signed on its behalf by:

D N Cordon - Trustee

D J Evans - Trustee

## **Beasley Back Dane**

### **Notes to the Financial Statements** **for the Year Ended 31 December 2021**

#### **1. ACCOUNTING POLICIES**

##### **Basis of preparing the financial statements**

The financial statements of the charitable company, which is a public benefit entity under FRS 102, have been prepared in accordance with the Charities SORP (FRS 102) 'Accounting and Reporting by Charities: Statement of Recommended Practice applicable to charities preparing their accounts in accordance with the Financial Reporting Standard applicable in the UK and Republic of Ireland (FRS 102) (effective 1 January 2019)', Financial Reporting Standard 102 'The Financial Reporting Standard applicable in the UK and Republic of Ireland' and the Companies Act 2006. The financial statements have been prepared under the historical cost convention, with the exception of investments which are included at market value, as modified by the revaluation of certain assets.

##### **Income**

All income is recognised in the Statement of Financial Activities once the charity has entitlement to the funds, it is probable that the income will be received and the amount can be measured reliably.

##### **Expenditure**

Liabilities are recognised as expenditure as soon as there is a legal or constructive obligation committing the charity to that expenditure, it is probable that a transfer of economic benefits will be required in settlement and the amount of the obligation can be measured reliably. Expenditure is accounted for on an accruals basis and has been classified under headings that aggregate all cost related to the category. Where costs cannot be directly attributed to particular headings they have been allocated to activities on a basis consistent with the use of resources.

##### **Tangible fixed assets**

Depreciation is provided at the following annual rates in order to write off each asset over its estimated useful life.

Freehold land and property - 2% on revaluation

##### **Taxation**

The charity is exempt from corporation tax on its charitable activities.

##### **Fund accounting**

Unrestricted funds can be used in accordance with the charitable objectives at the discretion of the trustees.

##### **Donated services**

Donated professional services are recognised in income at their fair value when their economic benefit is probable, it can be measured reliably and the charity has control over the item. Fair value is determined on the basis of the value of the gift to the charity. A corresponding amount is recognised in expenditure or capitalised as a fixed asset as applicable.

##### **Investments**

Investments, all received from P D Robinson Legacy, are stated at market value at the balance sheet date. The SOFA includes the net gains arising on revaluations and disposals throughout the year.

**Beasley Back Dane**

**Notes to the Financial Statements - continued  
for the Year Ended 31 December 2021**

**2. DONATIONS AND LEGACIES**

	2021	2020
	£	£
Grants	27,587	16,758
BBD Subscriptions and donations	4,598	4,131
	32,185	20,889

The charity recognised grants totalling £21,287 from Staffordshire Moorlands District Council during the year in respect of various Covid-19 support schemes.

**3. OTHER TRADING ACTIVITIES**

	2021	2020
	£	£
Back Dane hire	2,733	-
	2,733	-

**4. INVESTMENT INCOME**

	2021	2020
	£	£
Dividends and interest	-	5
	-	5

**5. SUPPORT COSTS**

	Management £	Information technology £	Other £	Governance costs £	Totals £
Child Outings / Back Dane	12,422	260	11,000	1,440	25,122
	12,422	260	11,000	1,440	25,122

Support costs, included in the above, are as follows:

**Management**

	2021 Child Outings / Back Dane £	2020 Total activities £
Rates and utilities	2,289	2,687
Insurance	1,570	1,645
Telephone, Postage and Stationery	87	178
Repairs and maintenance	7,687	18,393
Sundries	789	470
	12,422	23,373

**Beasley Back Dane**

**Notes to the Financial Statements - continued  
for the Year Ended 31 December 2021**

**5. SUPPORT COSTS - continued  
Other**

	2021 Child Outings / Back Dane £	2020 Total activities £
Depreciation of tangible fixed assets	11,000	11,000

**Governance costs**

	2021 Child Outings / Back Dane £	2020 Total activities £
Accountancy and legal fees	1,440	1,440

**6. NET INCOME/(EXPENDITURE)**

Net income/(expenditure) is stated after charging/(crediting):

	2021 £	2020 £
Depreciation - owned assets	11,000	11,000

**7. TRUSTEES' REMUNERATION AND BENEFITS**

There were no trustees' remuneration or other benefits for the year ended 31 December 2021 nor for the year ended 31 December 2020.

**Trustees' expenses**

The charity reimbursed expenses of £4,694 (2020: £5,757) to 7 trustees during the year ended 31 December 2021 in relation to general costs paid on behalf of the charity.

**8. TANGIBLE FIXED ASSETS**

	Freehold land and property £
<b>COST</b>	
At 1 January 2021 and 31 December 2021	750,000
<b>DEPRECIATION</b>	
At 1 January 2021	22,000
Charge for year	11,000
At 31 December 2021	33,000
<b>NET BOOK VALUE</b>	
At 31 December 2021	717,000
At 31 December 2020	728,000

Included in cost or valuation of land and buildings is freehold land of £200,000 (2020 - £200,000) which is not depreciated.

**Beasley Back Dane**

**Notes to the Financial Statements - continued  
for the Year Ended 31 December 2021**

**8. TANGIBLE FIXED ASSETS - continued**

**Analysis of valuation**

Valuation in 2021	750,000
	<u>750,000</u>

If the Freehold land and property had not been revalued it would have been included at the following historical cost and net book value of £541,479 (2020: £541,479) and £412,115 (2020: £433,388) respectively, including the land element of £1,650.

**9. FIXED ASSET INVESTMENTS**

	Listed investments £
<b>MARKET VALUE</b>	
At 1 January 2021	153,103
Additions	25,001
Movement	29,350
	<u>207,454</u>
At 31 December 2021	207,454
<b>NET BOOK VALUE</b>	
At 31 December 2021	<u>207,454</u>
At 31 December 2020	<u>153,103</u>

There were no investment assets outside the UK.

Cost or valuation at 31 December 2021 is represented by:

	Listed investments £
Valuation in 2021	<u>207,454</u>

**10. DEBTORS: AMOUNTS FALLING DUE WITHIN ONE YEAR**

	2021 £	2020 £
Other debtors	<u>602</u>	<u>1,565</u>

**Beasley Back Dane**

**Notes to the Financial Statements - continued  
for the Year Ended 31 December 2021**

<b>11. CREDITORS: AMOUNTS FALLING DUE WITHIN ONE YEAR</b>		2021	2020
		£	£
Accruals and deferred income		3,157	1,981
		<u>          </u>	<u>          </u>

<b>12. MOVEMENT IN FUNDS</b>			Net movement in funds	At
	At 1.1.21		£	31.12.21
	£		£	£
<b>Unrestricted funds</b>				
General fund	175,838	42,697		218,535
Unrestricted building fund	728,000	(11,000)		717,000
	<u>          </u>	<u>          </u>		<u>          </u>
	903,838	31,697		935,535
<b>Restricted funds</b>				
National Lottery Community Fund	-	5,872		5,872
	<u>          </u>	<u>          </u>		<u>          </u>
<b>TOTAL FUNDS</b>	<u>903,838</u>	<u>37,569</u>		<u>941,407</u>

Net movement in funds, included in the above are as follows:

	Incoming resources	Resources expended	Gains and losses	Movement in funds
	£	£	£	£
<b>Unrestricted funds</b>				
General fund	28,619	(15,272)	29,350	42,697
Unrestricted building fund	-	(11,000)	-	(11,000)
	<u>          </u>	<u>          </u>	<u>          </u>	<u>          </u>
	28,619	(26,272)	29,350	31,697
<b>Restricted funds</b>				
National Lottery Community Fund	6,300	(428)	-	5,872
	<u>          </u>	<u>          </u>	<u>          </u>	<u>          </u>
<b>TOTAL FUNDS</b>	<u>34,919</u>	<u>(26,700)</u>	<u>29,350</u>	<u>37,569</u>

**Comparatives for movement in funds**

		Net movement in funds	At
	At 1.1.20	£	31.12.20
	£	£	£
<b>Unrestricted funds</b>			
General fund	166,590	9,248	175,838
Unrestricted building fund	739,000	(11,000)	728,000
	<u>          </u>	<u>          </u>	<u>          </u>
	905,590	(1,752)	903,838
<b>TOTAL FUNDS</b>	<u>905,590</u>	<u>(1,752)</u>	<u>903,838</u>

**Beasley Back Dane**

**Notes to the Financial Statements - continued  
for the Year Ended 31 December 2021**

**12. MOVEMENT IN FUNDS - continued**

Comparative net movement in funds, included in the above are as follows:

	Incoming resources £	Resources expended £	Gains and losses £	Movement in funds £
<b>Unrestricted funds</b>				
General fund	20,902	(25,302)	13,648	9,248
Unrestricted building fund	-	(11,000)	-	(11,000)
	<u>20,902</u>	<u>(36,302)</u>	<u>13,648</u>	<u>(1,752)</u>
<b>TOTAL FUNDS</b>	<u>20,902</u>	<u>(36,302)</u>	<u>13,648</u>	<u>(1,752)</u>

**13. RELATED PARTY DISCLOSURES**

There were no related party transactions for the year ended 31 December 2021.

**14. LIMITED BY GUARANTEE**

The charity is a company limited by guarantee. In the event of the charity being wound up, the liability in respect of the guarantee is limited to £10 per member of the charity.

**Independent Examiner's Report to the Trustees of  
Beasley Back Dane**

**Independent examiner's report to the trustees of Beasley Back Dane ('the Company')**

I report to the charity trustees on my examination of the accounts of the Company for the year ended 31 December 2021.

**Responsibilities and basis of report**

As the charity's trustees of the Company (and also its directors for the purposes of company law) you are responsible for the preparation of the accounts in accordance with the requirements of the Companies Act 2006 ('the 2006 Act').

Having satisfied myself that the accounts of the Company are not required to be audited under Part 16 of the 2006 Act and are eligible for independent examination, I report in respect of my examination of your charity's accounts as carried out under section 145 of the Charities Act 2011 ('the 2011 Act'). In carrying out my examination I have followed the Directions given by the Charity Commission under section 145(5) (b) of the 2011 Act.

**Independent examiner's statement**

I have completed my examination. I confirm that no matters have come to my attention in connection with the examination giving me cause to believe:

1. accounting records were not kept in respect of the Company as required by section 386 of the 2006 Act; or
2. the accounts do not accord with those records; or
3. the accounts do not comply with the accounting requirements of section 396 of the 2006 Act other than any requirement that the accounts give a true and fair view which is not a matter considered as part of an independent examination; or
4. the accounts have not been prepared in accordance with the methods and principles of the Statement of Recommended Practice for accounting and reporting by charities (applicable to charities preparing their accounts in accordance with the Financial Reporting Standard applicable in the UK and Republic of Ireland (FRS 102)).

I have no concerns and have come across no other matters in connection with the examination to which attention should be drawn in this report in order to enable a proper understanding of the accounts to be reached.

Wayne Thomas ACA  
Bates Weston LLP  
Chartered Accountants  
The Mills  
Canal Street  
Derby  
DE1 2RJ

Date: .....