

Registered Charity no. 1087764  
Registered Company no. 04158075

**Gateway Church**  
**(Company Limited by Guarantee)**

**Trustees Annual Report and Accounts**

**Year Ended 31st March 2021**



# **Gateway Church**

**Year Ended 31st March 2021**

## **Contents Page**

	<b>Page</b>
Legal and Administrative Information	<b>1</b>
Trustee's Annual Report	<b>2</b>
Independent Examiners Report	<b>9</b>
Statement of Financial Activities and Income and Expenditure Account	<b>10</b>
Statement of Financial Position	<b>11</b>
Notes to the Financial Statements	<b>12</b>

# Gateway Church

**Year Ended 31st March 2021**

## Legal and Administrative Information

### Reference

The Charity is called "Gateway Church" and is registered with the Charity Commission for England and Wales as an Incorporated Association limited by guarantee.

**Registered Charity Number** 1087764

**Registered Company Number** 04158075

**Registered Office**  
St. Mark's Church  
St. Mark's Road  
Woodhouse  
Leeds  
L52 9AF

<b>The Trustees and Directors</b>	Mr Stephen Hackshaw (Chair)	Appointed 23/04/2019
	Mr Timothy Claydon	Appointed 02/09/2012
	Mr William Crump	Appointed 19/06/2014
	Mrs Amie Sinclair	Appointed 05/11/2015
	Mr Jonathan Nelson	Appointed 23/04/2019

<b>Company Secretary</b>	Mr Ciaran Forde	Appointed 28/11/2016
--------------------------	-----------------	----------------------

**Primary Bankers**  
CAF Bank Ltd  
25 King's Hill Avenue  
King's Hill  
West Mailing  
Kent  
ME19 4JQ

**Independent Examiner:**  
Nigel Wyatt BSC FCA  
Wyatt & Co Chartered Accountants  
125 Main Street  
Garforth  
Leeds  
LS25 1AF

### Trustee's Annual Report

Gateway Church was incorporated as a company on 12th February 2001 and became a registered Charity on 31st July 2001.

#### Our Vision and Values

We exist to love Jesus and love people by knowing Him and making Him known. God is growing us into a large, "all-sorts" family from across Leeds that impacts Woodhouse, the city, and the world. Come and join the adventure!

There is much we value, but the five memorable phrases below help summarise some of the culture we seek to sustain at Gateway.

1. **We keep the main thing, the main thing.** We are a community gathered around our love of Jesus Christ and His good news, so keep secondary issues in their place.
2. **We don't do "have to's" we do "get to's".** We want grace to propel everything we do, with not a whiff of legalism.
3. **Word and Spirit together help us grow.** We love enjoying God both through the Bible and His Holy Spirit.
4. **It's okay to not be okay (it's just not okay to set up home there).** Vulnerability is valued, as we share our lives and support one another.
5. **We can do more together than apart.** We love working together as a community and with others to see the Kingdom of God come.

#### Our Story

Gateway Church was planted, in partnership with NewFrontiers churches, in the year 2000, with a handful of people meeting together in the front room of a house. Over the years, as the church family grew, our Sunday morning meeting venue moved around Leeds, until we eventually moved into the renovated St Mark's church building in Woodhouse in March 2014, overseen by Gateway Building Trust (Charity number 1122411 and Company number 06459552).

During our journey we have had the privilege of playing a significant role in the formation of new church families in Doncaster (2004), Harrogate (2010), Bradford (2012), Liverpool (2013) and Halifax (2014).

Now gathering over 200 people at our Sunday gatherings, having gone to two gatherings in 2017, and five smaller gatherings in 2021, we continue to work in partnership with ChristCentral Churches, which is a part of the NewFrontiers family of churches, and we also enjoy strong relationships with many other churches in Leeds.

Gateway Church carries out the typical activities of a Christian church, e.g. public worship, teaching and training, prayer, projects of a charitable nature, the extension of the Christian faith in Leeds and beyond, the spiritual and practical support of other Christian churches and its own congregation.

Our charitable objects listed in the Articles of Association are:

- To advance the Christian faith in Leeds and in other parts of the United Kingdom or the World.
- To relieve aged persons and persons in conditions of need, hardship, sickness or distress.
- To advance education whether of children or of adults

# Gateway Church Leeds



Year Ended 31st March 2021

## Trustee's Annual Report

### 2020/2021 Objectives

Year upon year, Gateway church seeks to fulfil its vision statement within the cultural values it holds (see above). Each year, the church also sets out specific objectives in addition to its usual operation.

On January 12, 2020, Chris Frost, Lead Elder at Gateway church, set out a vision for Gateway for the next 12 months. Although the approach of this vision changed due to the Covid-19 pandemic, three priorities outside of Gateway's usual operation became clear:

1. **To support the Woodhouse community through the pandemic**
2. **To support international partnerships through the pandemic.**
3. **To respond to the climate emergency.**

### Public Benefit

Gateway Church gives due consideration to the Charity Commission's published guidance on the Public Benefit requirement under the Charities Act 2011. The Trustee's pay due regard to the public benefit they provide before deciding what activities the charity should undertake and continue to consider their activities in line with their stated charitable objectives above.

Through the advancement of the Christian faith in Leeds, Gateway Church benefits the public through the holding of worship services, prayer meetings, public celebration of Christian festivals, contributing to the spiritual and mental health of those who attend and contributing to the spiritual and moral education of children.

Gateway Church aims to work with the local community of Woodhouse to promote social cohesion, relieve poverty and share our beliefs in the Christian Faith. Gateway Church support charities who share in their faith and values in the city of Leeds, across the UK and internationally.

Through the maintenance of St Mark's Building in Woodhouse Gateway Church benefits the public by providing a place of worship for all who wish to attend and maintaining a space that is open for personal spiritual contemplation.

### Achievements and Performance

In 2020/2021 Gateway Church fulfilled its overall vision in the following ways:

#### **'God is growing us into a large, "all-sorts" family from across Leeds'**

Sunday gatherings are the main way Gateway Church seeks to outwork this element of the vision. With Government Covid restrictions, Gateway pivoted to a mainly online strategy. This incorporated adjusting St Mark's to effectively stream gatherings. Gateway also took Alpha, 'Into the word', 5 prayer gatherings and life groups online. Gateway also went on to provide Hybrid gatherings when it was safe to do so.

Gateway achieved 22,368 YouTube views during the financial year, as well as encouraging messages from contacts who had stumbled across or been invited to the online content.

#### **That impacts Woodhouse.**

The main way Gateway fulfilled this in 2020/21 was through responding to the needs that the pandemic created. However, when safe and legal to do so KidsKlub volunteering continued. Chris Frost continued his Governing role at Quarry Mount Primary School. Monthly prayer meetings for Woodhouse also continued throughout.

### Trustee's Annual Report

#### **That impacts the city.**

Creatively and safely Gateway was still able to reach out to the city through the Woodhouse Window Wonderland, the 'What would Jesus say to me?' Sunday, Try Praying and our online Alpha and Marriage Course's.

Gateway has also been able to continue our financial support to partner organisations working locally, including; Leeds Faith in Schools, Kids Klub, CAP, Unity in Poverty Action, The Vine contact Centre and Transformations Leeds.

#### **That impacts the world.**

The highlight for Gateway's work in the world this year was raising the £40,000 needed to release Gateway member's Anjelo Okot's vision to build a new school in Northern Uganda, and see the images of the work progressing. Gateway also continued to work in partnership with Christ Central churches, that serves 275 churches in 25 nations.

The specific objectives for 2020/2021 were fulfilled in the following ways:

#### **1. To support the Woodhouse community through the pandemic**

It was fortuitous (we believe a blessing from God) that £20,000 funding for the Woodhouse Community Grant Scheme was collected in 2019, to be awarded to local community projects in 2020, to allow a robust response to the local needs the pandemic created. As examples, funding allowed:

- Gateway to initiate the Love woodhouse food project which provided 5,400 meals to the local community who were isolated during national lockdowns.
- The Bahar Women's society, working with the Love Woodhouse project to provide a further 1,840 meals to address food poverty during the year.
- Rainbow food junction to continue to serve around 200 households in need of food, delivering to the local area, and providing a drop-in centre for 60-80 people a day.
- Oblong community centre to continue their support to local residents, providing food and signposting support to 95 households in the Woodhouse area.

Gateway also provided support through the Gateway give-away where over 2 tonnes of donations from residents and Gateway members were given to local people. Gateway also provided a food collection point and the opening of a Fuel Bank.

#### **2. To support international partnerships through the pandemic.**

As the pandemic progressed the needs of our international partners became clear. As well as providing pastoral and prayer support Gateway raised and sent £9,600 to the ChristCentral Hope appeal and £6,400 to FIAM Ministries in India. Around a Tonne of Gateway donations were also sent to Zimbabwe and the DRC.

#### **3. To respond to the climate emergency.**

While continuing to 'keep the main thing, the main thing', Gateway has become convinced it must engage with the climate issue. Although still at the beginning of a journey, working with Tearfund and ARocha, we have:

- Held climate Sundays, where we've recognised the climate emergency we're in, looked at the Bible on this issue and lamented together at how bad things have got
- Written to our local councillors and MP letting them know we have done this and our care for God's planet
- Set up teams to explore how we can environmentally improve corporately and individually
- Prayed for environmental issues at prayer meetings
- Planned an eco art project for Easter 2021
- Instigated an ecological survey for our grounds
- Created a Gateway kids series about caring for God's world

# Gateway Church Leeds



**Year Ended 31st March 2021**

## **Trustee's Annual Report**

### **Future Plans**

Gateway Church plans to continue to fulfil its vision statement within the cultural values it holds into 2021/2022.

On 2 May 2021, Chris Frost, Lead Elder at Gateway church, presented the following objectives for the next 12 months to the church, outside of its usual operation:

To assist in the recovery of Covid-19. Plans regarding the Gateway give-away, holiday hunger, fuel bank, food offering and an early intervention scheme are already underway.

To transition to 5 physical Sunday gatherings from Sunday 23 May, 2021 for a 6 month trial period.

### **Financial Review**

At the end of the financial year Gateway Church finished with a surplus of £9,394. The closing balance for the year to 31st March 2021 was £81,638.

Gateway Church is principally funded by donations from its church members and private individuals, accounting for £342,191 of its income. Due to the Coronavirus pandemic Gateway Church was unable to rent out St Mark's which had previously been a reliable source of income. As a result, the trustees of Gateway Church limited spending, cashflow was monitored closely, 3 members of staff were placed on furlough and the job retention scheme grant was applied for to cover 80% of their salaries. We were also fortunate to be awarded a discretionary grant from the local authority, as we continued to use our building to serve the local community with a food delivery service yet had lost income that would usually cover the cost of the building.

Church members had donated £19,915 to a Woodhouse community grant scheme in the previous year, which enabled the church to award funding for local community initiatives, many of which supported local residents with food poverty during the national lockdowns (more details in the restricted fund section).

Church members also generously fundraised for the building of a school in Northern Uganda, where war has prevented many children from gaining an education.

Some members' donations are designated to a 'Building Fund' which pays for the lease of St Mark's Church owned by the associated charity, 'Gateway Buildings Trust', these donations continued through the year.

During the pandemic, the income of the church was uncertain, and so spending was limited, the church moved its services and connection with their congregation online. During this time the church continued to reach and grow their 'all sorts' community through their online presence. Spending on of the restricted funds continued, and we fortunately saw that by the financial year end the unrestricted funds in the church were in a healthy position.

Gateway Church is registered with the Fundraising Regulator. We are committed to the fundraising standards laid out in the Fundraising regulators code. Any staff or volunteers involved in fundraising events/ collections are asked to abide by the code as they conduct fundraising appeals.

### **Restricted funds**

The Church encourages generosity, through holding special offerings on top of members regular donations, giving them the opportunity to contribute to a specific cause or need. Over the past few years we have collected donations through these special offerings for FIAM – Faith in Action Ministries in India (2017: £23,266), St Mark's Grounds (2018: £23,182) and Woodhouse Community Grant Scheme (2019: £19,915). This year the special offering was an appeal to fund the building of a

# Gateway Church Leeds



Year Ended 31st March 2021

## Trustee's Annual Report

school in Northern Uganda called Safe Haven Academy. £31,232 was donated, and the church contributed £8,768 from its unrestricted funds to meet the £40,000 target. The building has started, in the hope that the school will be built ready to receive pupils in 2022.

These offerings enabled us to continue to outwork our vision. These funds were donated to the Church in Trust, recorded as restricted, and cannot be used outside these specific purposes.

All other money for smaller restricted purposes (for example our Hope offering to support Christ Central churches in Africa at the start of the pandemic) are recorded as restricted income, to ensure it is accounted for and correctly spent.

## Reserves Policy

Gateway Church held £69,220 in unrestricted funds at the end of March 2021. Once accounting for fixed assets and the designated funds (held for the payment of the lease on St Marks Building), Gateway Church held £58,519 in free reserves.

The Trustees would ideally like the church to hold reserves in the range of £49,290 (2 months unrestricted expenditure) to £98,581 (4 months unrestricted expenditure). The minimum being the cost of winding the church up – calculated with the current staff teams notice periods in mind. The maximum reserve would allow the church to go through times where reserves are needed to cover unexpected events or loss in income and/or take advantage of unforeseen opportunities.

The Gateway Trustees are pleased that the church has been able to build up their reserves to their target level in an unpredictable year. They recognise that the unrestricted expenditure level for the year is low and may rise, thus increasing target level of reserves, and so expect to continue to build the reserves as the spending of the church grows.

## Risk Management

The Trustees and Elders of Gateway Church work together to review risk regularly, they seek to identify and manage the principal risks that the charity faces.

The Risk Management Policy identifies the Trustees and Elders risk attitude (where risk can be absorbed or where they are unwilling to accept risks). The risk register is kept up to date with new risks identified, details of controls in place and retained risk. The principal risks have been identified (listed below) by looking at the likelihood, impact, and attitude to each risk. The principal risks are discussed at Trustees' meetings and actions identified to limit their impact.

The Trustees and Elders have identified the principal risks of Gateway Church as follows:

Principle Risks	Risk appetite
Staff burnout - Staff overworking due to job roles with unclear boundaries and expectations of congregation and leaders, desire to serve.	Risk averse
Dispute amongst Staff- Challenging working environment, particularly for younger staff. Blurred boundaries of being a 'family', serving the congregation and being colleagues.	Risk averse
Maintained loss of Letting income – Seen during Covid pandemic	Risk equilibrium
Safeguarding incident	Zero tolerance

## Going Concern

Gateway Church has a strong, consistent level of regular donations from the church members, allowing a good cash flow through the year. The church has over the last few years diversified their



### Trustee's Annual Report

income by renting out St Mark's building. Although this was limited in this financial period, the church hopes that income through the hire of the building will return to enable the continued support of their charitable activities.

At the time of preparing the accounts, Gateway Church Trustees believe the charity is able to continue as a going concern. The trustees continue to monitor the cash flow of the church closely through the year, but do not consider this to be a material uncertainty that would cast significant doubt on the church's ability to continue as a going concern.

### Volunteers

Gateway Church would like to recognise and thank the ongoing contribution of our members who volunteer to support the running of the church and make it the vibrant and cohesive community it is. We would like to give special thanks to John and Lesley Davy, who are both full-time volunteers who work alongside the staff team.

### Structure, Governance and management

The trustees of the charity (listed above), who are also directors of the company observe the church's obligation under company and charity law and set/monitor the salaries and the contract/working conditions of the employees. The trustees hold oversight over the budget and the risk management of the Church. There has been one member of the leadership team attending the Trustees meetings in the interest of effective communication. Trustees are voted in on an annual basis.

Gateway Church is a member of the Evangelical Alliance and partner with Christ Central Churches. The memorandum and Articles of Association determine the terms of office of the trustees and members (Eldership) of the church. Trustees are elected or re-elected by the membership (Elders) at the AGM. Induction and training are available for new trustees.


The Charity's legal status is that of a Company Limited by Guarantee and is governed by the Company's Articles of Association.

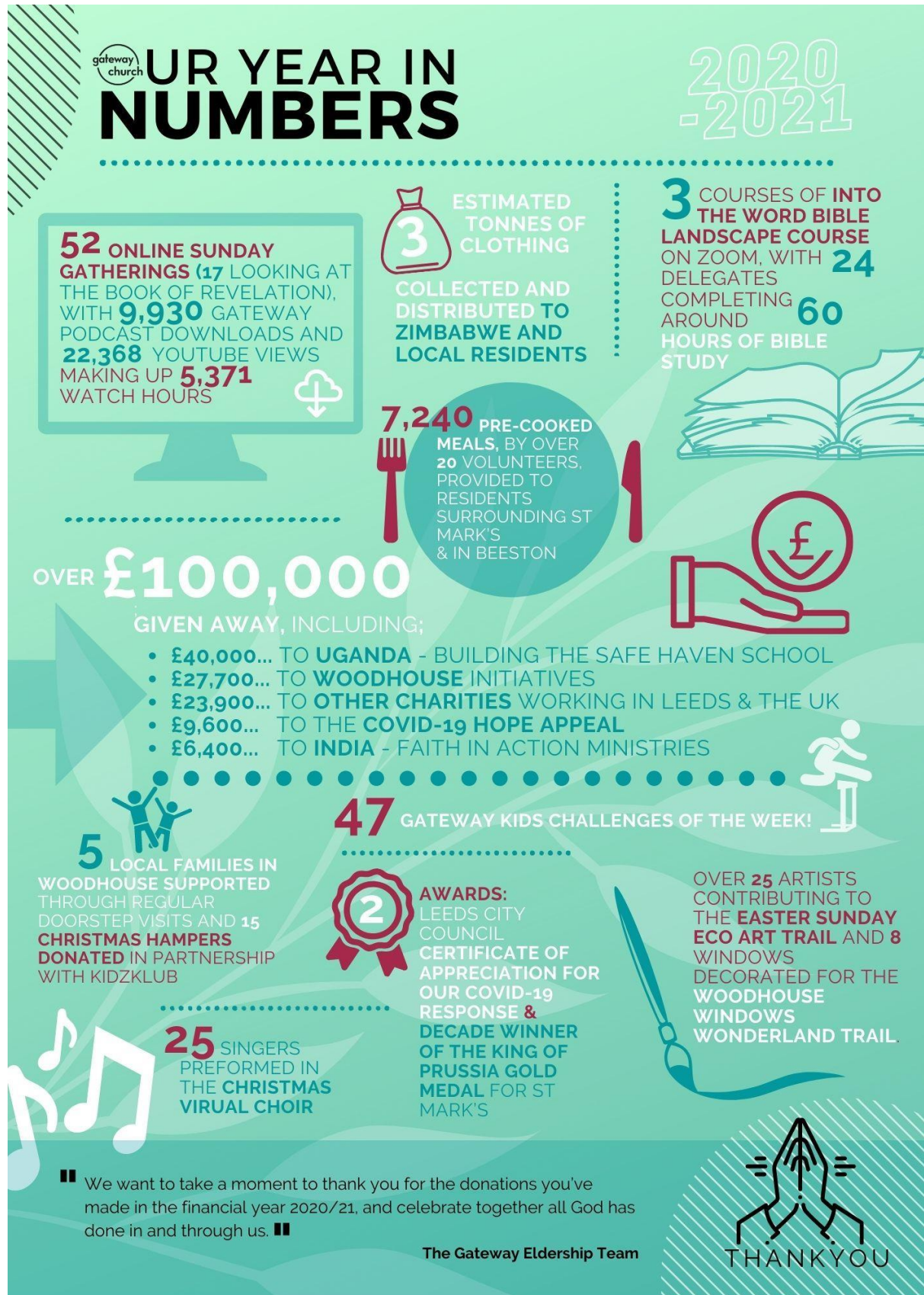
The trustees who served the charity during the period were as follows: Steve Hackshaw (Chair), Tim Claydon, Wills Crump, Amie Sinclair and Jon Nelson. Ciaran Forde is appointed as acting Company Secretary.

The Church was managed on a day-to-day basis by Elders consisting of Chris Frost (Lead Elder), Sam Evans, David Cole, David Lloyd and Timothy Green. Chris Frost, Sam Evans, and David Cole were employed full time. The trustees hold an agreed delegation of roles to the Senior management team which includes the Elders on Staff and the Finance Manager. The Lead Elder and Finance Manager report monthly to the Trustees who endeavour to meet quarterly through the year. The Eldership team were supported by a part-time Finance Manager (Lizzy Bird), a part-time Communications Manager (Sarah Woodger), a full time Administration Assistant (Bethan Green) a part time Children and Families worker (Amy Sprenger) and a part-time Youth Worker (Joseph Williams). The team were supported by many volunteer personnel from the church organisation.

The Elders continue to carry the primary responsibility for the church.

### Approved by the Trustees

Name of Trustee:	Steve Hackshaw
Signed on behalf of the Trustees:	
Date of approval:	08/12/2021



# Gateway Church

**Year Ended 31st March 2021**

## **Independent Examiners Report**

I report to the trustees on my examination of the financial statements of Gateway Church Leeds ('the charity') for the year ended 31 March 2021.

### **Responsibilities and basis of report**

As the trustees of the charity you are responsible for the preparation of the financial statements in accordance with the requirements of the Charities Act 2011 ('the Act').

I report in respect of my examination of the charity's financial statements carried out under section 145 of the 2011 Act and in carrying out my examination I have followed all the applicable Directions given by the Charity Commission under section 145(5)(b) of the Act.

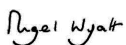
### **Independent examiner's statement**

Since the charity's gross income exceeded £250,000 your examiner must be a member of a body listed in section 145 of the 2011 Act. I confirm that I am qualified to undertake the examination because I am a member of the Institute of Chartered Accountants in England and Wales (ICAEW), which is one of the listed bodies.

I have completed my examination. I confirm that no material matters have come to my attention in connection with the examination giving me cause to believe that in any material respect:

1. accounting records were not kept in respect of the charity as required by section 130 of the Act; or
2. the financial statements do not accord with those records; or
3. the financial statements do not comply with the applicable requirements concerning the form and content of accounts set out in the Charities (Accounts and Reports) Regulations 2008 other than any requirement that the accounts give a 'true and fair' view which is not a matter considered as part of an independent examination.

I have no concerns and have come across no other matters in connection with the examination to which attention should be drawn in this report in order to enable a proper understanding of the accounts to be reached.



Nigel Wyatt BSC FCA  
Independent Examiner  
125 Main Street  
Garforth  
Leeds  
LS25 1AF

Date: 09/12/2021

# Gateway Church

Year Ended 31st March 2021

## Statement of Financial Activities and Income and Expenditure Account

		Unrestricted Funds	2021 Restricted Funds	Total Funds	2020 Total Funds
	Note	£	£	£	£
<b>Income</b>					
Donations and legacies		323,209	63,040	<b>386,249</b>	315,443
Charitable activities	<b>2</b>	1,474	-	<b>1,474</b>	14,225
Activities for generating income		(55)	-	<b>(55)</b>	43,557
Other Income		1	333	<b>334</b>	77
<b>Total income</b>		<u>324,629</u>	<u>63,373</u>	<u><b>388,002</b></u>	<u>373,302</u>
<b>Expenditure</b>					
Expenditure on charitable activities	<b>3</b>	285,501	82,864	<b>368,366</b>	361,186
Cost of Generating Funds	<b>4</b>	321	-	<b>321</b>	1,605
Governance Costs	<b>5</b>	9,922	-	<b>9,922</b>	10,478
<b>Total expenditure</b>		<u>295,744</u>	<u>82,864</u>	<u><b>378,608</b></u>	<u>373,269</u>
<b>Net income and net movement in funds</b>		<u>28,885</u>	<u>(19,491)</u>	<u><b>9,394</b></u>	<u>32</u>
<b>Net income and net movement in funds</b>					
Total funds brought forward	<b>14</b>	40,350	31,894	<b>72,244</b>	72,212
Transfers	<b>14</b>	(15)	15	-	-
<b>Total funds carried forward</b>	<b>14</b>	<u>69,220</u>	<u>12,418</u>	<u><b>81,638</b></u>	<u>72,244</u>

All income and expenditure derive from continuing activities.

The statement is a combined Statement of Financial Activities and Income and Expenditure Account for the purposes of meeting both companies act and charity SORP reporting requirements.

# Gateway Church

Year Ended 31st March 2021

## Statement of Financial Position

	Note	2021 £	2020 £
<b>Fixed assets</b>			
Tangible fixed assets	11	9,750	23,586
<b>Current assets</b>			
Debtors	12	5,945	6,066
Cash at bank and in hand		70,298	47,406
		<u>76,243</u>	<u>53,472</u>
<b>Creditors: amounts falling due within one year</b>	13	4,355	4,814
<b>Net current assets</b>		<u>71,888</u>	<u>48,658</u>
<b>Total assets less current liabilities</b>		<u>81,638</u>	<u>72,244</u>
<b>Net assets</b>	15	<u>81,638</u>	<u>72,244</u>
<b>Funds of the charity</b>			
Restricted funds	14	12,418	31,894
Unrestricted funds	14	69,220	40,350
<b>Total charity funds</b>	14	<u>81,638</u>	<u>72,244</u>

### Directors Responsibilities

The Directors are satisfied that for the year ended on 31st March 2021 the charitable company was entitled to exemption from the requirement to obtain an audit under section 477 of the Companies Act 2006 and that no member or members have required the company to obtain an audit of its accounts for the year in question in accordance with section 476 of the Act. However, In accordance with section 145 of the Charities Act 2011, the accounts have been examined by an Independent Examiner.

The Directors acknowledge their responsibility for complying with the requirements of the Companies Act 2006 with respect to accounting records and the preparation of accounts. These accounts have been prepared in accordance with the provisions applicable to companies subject to the small companies' regime and with FRS 102 (effective January 2015).

Name of director:

Steve Hackshaw

Signed on behalf of the directors:

*Steve Hackshaw*

Date of approval:

08/12/2021

# Gateway Church

Year Ended 31st March 2021

## Notes to the Financial Statements

### Basis of Preparation

The financial statements have been prepared in accordance with the Statement of Recommended Practice: Accounting and Reporting by Charities Financial Reporting Standards applicable in the UK and Republic of Ireland (Charities SORP 2019 FRS 102) and the Charities Act 2011.

### Assessment of Going Concern

Preparation of the accounts is on a going concern basis. The trustees consider that there are no material uncertainties about the Charity's ability to continue as a going concern.

### Fund Accounting

Unrestricted income funds comprise those funds which the trustees are free to use for any purpose in furtherance of the charitable objects. Unrestricted funds include designated funds where the trustees, at their discretion, have set aside resources for a specific purpose. Some regular donations from church members have been designated for the lease payment on the St Marks building and are set aside in a building fund for this use.

Restricted funds are funds which are to be used in accordance with specific restrictions imposed by the donor or the term of specific appeal, often known as a 'special offering' in the church.

Further explanation of the nature and purpose of each fund is included in the notes to the accounts.

### Incoming Resources

All incoming resources are recognised once the charity has entitlement to the resources. It is probable that the resources will be received, and the monetary value of incoming resources can be measured with sufficient reliability.

- All voluntary income from members of the church are recognised as donations and are included in full, with associated Gift Aid receivable in the Statement of Financial Activities.
- Grants where entitlement is not conditional on the delivery of specific performance by the charity are recognised when the charity becomes unconditionally entitled to the grant.
- Income resources from charitable trading activities such as the letting of St Mark's building are accounted for when invoices are drawn up (as the point of entitlement).
- Donated services and facilities are included at the value to the charity where this can be quantified.
- Gifts in Kind are accounted for at a reasonable estimate of their value to the charity or the amount actually realised.
- Volunteer time, the value of voluntary support for the work of the church is not included in the accounts but is described in the Trustees annual report.
- Investment Income is included in the accounts when receivable.

# Gateway Church

Year Ended 31st March 2021

## Notes to the Financial Statements

### Resources expended

Expenditure is recognised on an accrual basis as a liability is incurred. Liabilities are recognised where it is more likely than not that there is a legal or constructive obligation committing the charity to pay out the resources and the amount of the obligation can be measured with reasonable certainty.

### Governance Costs

Include costs of the preparation and examination of statutory accounts, the costs of the trustees' meetings and cost of any legal advice to trustees on governance or constitutional matters.

### Liability Recognition

Abilities are recognised as soon as there is a legal or constructive obligation committing the charity to pay out resources.

### Tangible fixed assets

All assets costing more than £500 are capitalised and at historic cost. Fixed assets are stated at cost less accumulated depreciation. Depreciation is charged on furniture and equipment which is written off on a straight-line basis over the estimated useful live of the asset.

Equipment:	Between 3 and 5 years
------------	-----------------------

### Pensions

The charity operates a defined contribution pension scheme. Contributions are charged to the Statement of Financial Activities as they become payable in accordance with the rules of the scheme.

### Operating Leases

Rental charges payable under operating leases are charged on a straight line basis over the terms of the lease.

### Taxation

The charity is exempt from tax on its charitable activities.

### Legal Status of the Charity

The charity is a company limited by guarantee and has no share capital. In the event of the charity being wound up, the liability in respect of the guarantee is limited to £1 per member of the charity.

# Gateway Church

Year Ended 31st March 2021

## Notes to the Financial Statements

### 2 Analysis of Income

	Unrestricted Funds £	Restricted Funds £	Total Funds 2021 £
<b>Donations and legacies</b>			
Donations	227,795	53,743	<b>281,538</b>
Gift Aid	51,356	9,297	<b>60,653</b>
Grants	44,059	-	<b>44,059</b>
	<u>323,209</u>	<u>63,040</u>	<u><b>386,249</b></u>
<b>Charitable activities</b>			
Activities & Events	1,474	-	<b>1,474</b>
Church Weekend Away	-	-	-
Secondment to Share Jesus International	-	-	-
	<u>1,474</u>	<u>-</u>	<u><b>1,474</b></u>
<b>Activities for generating income</b>			
St Marks Building Lettings	(55)	-	<b>(55)</b>
Vodafone Mast Rental	-	-	-
	<u>(55)</u>	<u>-</u>	<u><b>(55)</b></u>
<b>Other income</b>			
Reimbursed Expenses	-	333	<b>333</b>
Bank Interest	1	-	<b>1</b>
	<u>1</u>	<u>333</u>	<u><b>334</b></u>
<b>Total Income</b>	<u><b>324,629</b></u>	<u><b>63,373</b></u>	<u><b>388,002</b></u>

During the year £30,077.54 of government grants were received during the year from the governments covid-19 Job Retention Scheme. All conditions and requirements of the grants were satisfied during the year.



# Gateway Church

Year Ended 31st March 2021

## Notes to the Financial Statements

### 2 Analysis of Income (*Continued*)

	Unrestricted Funds £	Restricted Funds £	Total Funds 2020 £
<b>Donations and legacies</b>			
Donations	227,883	21,671	<b>249,554</b>
Gift Aid	57,724	2,882	<b>60,606</b>
Grants	-	5,283	<b>5,283</b>
	<u>285,607</u>	<u>29,836</u>	<u><b>315,443</b></u>
<b>Charitable activities</b>			
Activities & Events	716	7,545	<b>8,261</b>
Church Weekend Away	2,728	944	<b>3,673</b>
Secondment to Share Jesus International	2,291	-	<b>2,291</b>
	<u>5,735</u>	<u>8,489</u>	<u><b>14,225</b></u>
<b>Activities for generating income</b>			
St Marks Building Lettings	40,557	-	<b>40,557</b>
Vodafone Mast Rental	3,000	-	<b>3,000</b>
	<u>43,557</u>	<u>-</u>	<u><b>43,557</b></u>
<b>Other income</b>			
Reimbursed Expenses	77	-	<b>77</b>
	<u>77</u>	<u>-</u>	<u><b>77</b></u>
<b>Total Income</b>	<u><b>334,977</b></u>	<u><b>38,325</b></u>	<u><b>373,302</b></u>

# Gateway Church

Year Ended 31st March 2021

## Notes to the Financial Statements

### 3 Expenditure on charitable activities by fund type

	Unrestricted Funds £	Restricted Funds £	Total Funds 2021 £
Administration	4,886	-	<b>4,886</b>
Asset Depreciation	15,014	-	<b>15,014</b>
Building Lease	30,239	-	<b>30,239</b>
Children's Working	721	-	<b>721</b>
Conferences & Training	5,978	-	<b>5,978</b>
Connect Teams	30	-	<b>30</b>
Evangelism	1,478	-	<b>1,478</b>
Events	-	-	-
FC Gateway	-	90	<b>90</b>
Giving	34,879	5,582	<b>40,461</b>
Impact Team, Interns & Volunteer Expenses	369	-	<b>369</b>
Internations in Leeds	-	-	-
Life Groups	5	-	<b>5</b>
Meetings	839	-	<b>839</b>
Other Expenditure & Contingency	4,348	-	<b>4,348</b>
PA Equipment & Maintenance	729	-	<b>729</b>
Social Action	34	-	<b>34</b>
Special Offering	-	74,842	<b>74,842</b>
St Marks Running Costs	14,122	2,350	<b>16,472</b>
Staff Costs	169,007	-	<b>169,007</b>
Staff Expenses	1,585	-	<b>1,585</b>
Students	-	-	-
Worship	928	-	<b>928</b>
Youth Work	311	-	<b>311</b>
	<u>285,501</u>	<u>82,864</u>	<u><b>368,366</b></u>

# Gateway Church

Year Ended 31st March 2021

## Notes to the Financial Statements

### 3 Expenditure on charitable activities by fund type (Continued)

	Unrestricted Funds £	Restricted Funds £	Total Funds 2020 £
Administration	4,625	-	4,625
Asset Depreciation	14,885	-	14,885
Building Lease	30,239	-	30,239
Children's Working	1,514	-	1,514
Conferences & Training	7,807	9,456	17,263
Connect Teams	32	-	32
Evangelism	4,838	1,354	6,192
Events	3,358	2,360	5,718
FC Gateway	-	2,237	2,237
Giving	27,612	3,488	31,100
Impact Team, Interns & Volunteer Expenses	522	-	522
Internations in Leeds	604	-	604
Life Groups	14	-	14
Meetings	3,791	-	3,791
Other Expenditure & Contingency	4,113	-	4,113
Social Action	748	-	748
Special Offering	-	1,538	1,538
St Marks Running Costs	21,784	6,421	28,205
Staff Costs	194,123	1,500	195,623
Staff Expenses	5,820	-	5,820
Students	614	998	1,612
Worship	999	-	999
Youth Work	831	2,962	3,793
	<u>328,874</u>	<u>32,312</u>	<u>361,186</u>

### 4 Cost of Generating Funds

	Unrestricted Funds £	Restricted Funds £	Total Funds 2021 £
Lettings Expenditure	321	-	321
	<u>321</u>	<u>-</u>	<u>321</u>

	Unrestricted Funds £	Restricted Funds £	Total Funds 2020 £
Lettings Expenditure	1,605	-	1,605
	<u>1,605</u>	<u>-</u>	<u>1,605</u>

# Gateway Church

Year Ended 31st March 2021

## Notes to the Financial Statements

### 5 Governance Costs

	Unrestricted Funds £	Restricted Funds £	Total Funds 2021 £
Insurance Costs	8,696	-	8,696
Legal & Professional Fees	1,226	-	1,226
	<u>9,922</u>	<u>-</u>	<u>9,922</u>

	Unrestricted Funds £	Restricted Funds £	Total Funds 2020 £
Insurance Costs	8,300	-	8,300
Legal & Professional Fees	2,178	-	2,178
	<u>10,478</u>	<u>-</u>	<u>10,478</u>

### 6 Volunteers

The church benefits greatly from the voluntary contributions of time and money by its formal members and regular attendees. Please refer to the trustee's report for further detail about volunteer contributions in the organisation.

### 7 Donated goods, facilities and services

The total equipment which was donated to the charity that has been recognised in the year as a donated gift and asset was £0 (2020: £2,470).

During the year due to the covid-19 pandemic two employees voluntarily took a pay cut for a temporary period of time due to the uncertain financial situation facing the church at the start of the pandemic. This has been recognised as a gift of service to the church of £2,634.30 (2019: £0)

Over three tones of clothes, furniture and equipment were donated to the church to be sent out to Zimbabwe. Due to the nature of the donations, the inability to reasonably value and the redistribution mean the donations have not been recognised as a gift in kind during the year.

### 8 Independent examination fees

Fees payable to the independent examiner for:

	2021 £	2020 £
Independent examination and preparation of the financial statements	1,200	1,380

# Gateway Church

Year Ended 31st March 2021

## Notes to the Financial Statements

### 9 Staff costs

The total staff costs and employee benefits for the reporting period are analysed as follows:

	2021	2020
	£	£
Wages and salaries	144,479	163,224
Social security costs	11,770	14,128
Employer contributions to pension plans	8,775	9,184
Employee Gifted Salary Reduciton (Gift In Kind)	2,634	-
	<u>167,658</u>	<u>186,536</u>
Self Employed Contractors	<u>1,348</u>	<u>9,087</u>
	<u>169,007</u>	<u>195,623</u>

The average head count of employees during the year was as follows:

	2021	2020
Average Head Count	8	7

No employee received employee benefits of more than £60,000 during the year was as follows:

	2021	2020
More than £60,000	0	0

The Charity also utilised the services of some self employed contractors during the year.

### Key Management Personnel

The charity considers its key management personnel to be the Trustees and the Eldership team. The Eldership team is made up of three staff members and two volunteers. The total employee benefits received by key management were as follows:

	2021	2020
	£	£
Key management personnel employee benefit	118,249	129,392

# Gateway Church

Year Ended 31st March 2021

## Notes to the Financial Statements

### 10 Trustee remuneration and expenses

All Trustees are active members of Gateway Church, and are in this way beneficiaries of the charitable acts that the church provides. No Trustees or related party was in receipt of any benefits from the charity beyond that of any other church member during the financial period. No remuneration was made to a Trustees/ Directors or any persons connected with them during the financial period. No expenses incurred or material transactions took place between the charity and a trustee or any person connected with them.

During the year the total aggregated donations made to the charity by the trustee's during the year was £33,929 (2020: £31,026).

### 11 Tangible fixed assets

	Equipment £	Total £
<b>Cost</b>		
At 1 April 2020	71,982	71,982
Additions	1,178	1,178
	<u>73,160</u>	<u>73,160</u>
<b>Depreciation</b>		
At 1 April 2020	48,396	48,396
Charge for this year	15,014	15,014
	<u>63,410</u>	<u>63,410</u>
<b>Carrying amount</b>		
<b>At 31 March 2021</b>	<u>9,750</u>	<u>9,750</u>
At 31 March 2020	<u>23,586</u>	<u>23,586</u>

### 12 Debtors

	2021 £	2020 £
Trade Debtors	811	1,626
Accrued Income	5,134	4,441
	<u>5,945</u>	<u>6,066</u>

### 13 Creditors: amounts falling due within one year

	2021 £	2020 £
Accruals	1,200	1,380
Other Tax and Social Security	3,155	3,434
	<u>4,355</u>	<u>4,814</u>

# Gateway Church

Year Ended 31st March 2021

## Notes to the Financial Statements

### 14 Analysis of Charitable Funds

#### Unrestricted Funds

	1 Apr 2020 £	Income £	Expenditure £	Transfers £	31 Mar 2021 £
<b>Unrestricted</b>					
General funds	34,885	300,818	(267,421)	(15)	<b>68,269</b>
<b>Designated</b>					
Building Fund - St Marks Lease payments	5,465	23,810	(28,324)	-	<b>951</b>
<b>Total</b>	<b>40,350</b>	<b>324,628</b>	<b>(295,744)</b>	<b>(15)</b>	<b>69,220</b>

#### Restricted Funds

	1 Apr 2020 £	Income £	Expenditure £	Transfers £	31 Mar 2021 £
FIAM Appeal	25	7,540	(6,385)	-	<b>1,179</b>
Woodhouse community Special Offering	19,915	9,179	(27,688)	-	<b>1,407</b>
Safe Haven Academy Uganda	-	31,232	(31,232)	-	-
Hope Offering for Christ Central Africa	-	9,537	(9,537)	-	-
St Marks Ground Special Offering	11,405	-	(2,350)	-	<b>9,055</b>
St Marks Wedding List	692	-	-	-	<b>692</b>
Student weekend Away	-	-	-	-	-
Church Weekend Special Offering	-	-	-	-	-
Make Lunch Grant	121	-	-	-	<b>121</b>
FC Gateway	(478)	553	(90)	15	-
Live@ St Marks Festival	213	-	-	-	<b>213</b>
Marriage Course	-	-	-	-	-
Mums and Tots Group	-	-	-	-	-
Pastoral Giving	-	5,333	(5,582)	-	<b>(250)</b>
Devoted Festival	-	-	-	-	-
Carol service collection	-	-	-	-	-
Leaders Training	-	-	-	-	-
Cass Ms	-	-	-	-	-
Other funds (balancing figure)	-	-	-	-	-
	<b>31,893</b>	<b>63,373</b>	<b>(82,864)</b>	<b>15</b>	<b>12,418</b>
<b>Total Funds</b>	<b>72,243</b>	<b>388,002</b>	<b>(378,608)</b>	<b>-</b>	<b>81,638</b>

# Gateway Church

Year Ended 31st March 2021

## Notes to the Financial Statements

### 14 Analysis of Charitable Funds (*continued*)

#### Unrestricted Funds

	1 Apr 2019 £	Income £	Expenditure £	Transfers £	31 Mar 2020 £
<b>Unrestricted</b>					
General funds	47,933	299,721	(310,719)	(2,050)	<b>34,885</b>
<b>Designated</b>					
Building Fund - St Marks Lease payments	3,449	35,256	(30,239)	(3,000)	<b>5,465</b>
<b>Total</b>	<b>51,382</b>	<b>334,977</b>	<b>(340,958)</b>	<b>(5,050)</b>	<b>40,350</b>

#### Restricted Funds

	1 Apr 2019 £	Income £	Expenditure £	Transfers £	31 Mar 2020 £
FIAM Appeal	1,250	313	(1,538)	-	<b>25</b>
Woodhouse community Special Offering	-	19,915	-	-	<b>19,915</b>
St Marks Ground Special Offering	19,376	-	(7,971)	-	<b>11,405</b>
St Marks Wedding List	742	-	(50)	-	<b>692</b>
Student weekend Away	-	630	(998)	368	-
Church Weekend Special Offering	(1,015)	3,826	(2,811)	-	-
Make Lunch Grant	-	5,283	(5,162)	-	<b>121</b>
FC Gateway	34	1,725	(2,237)	-	<b>(478)</b>
Live@ St Marks Festival	443	-	(230)	-	<b>213</b>
Marriage Course	-	566	(881)	315	-
Mums and Tots Group	-	125	(243)	117	-
Pastoral Giving	-	788	(788)	-	-
Devoted Festival	-	1,184	(2,360)	1,176	-
Carol service collection	-	203	(400)	197	-
Leaders Training	-	340	(2,785)	2,445	-
Cass Ms	-	3,000	(3,120)	120	-
Other Imaterial funds	-	428	(740)	312	-
	<b>20,830</b>	<b>38,325</b>	<b>(32,312)</b>	<b>5,050</b>	<b>31,894</b>



# Gateway Church

**Year Ended 31st March 2021**

## **Notes to the Financial Statements**

### **Fund Descriptions**

#### **Building Fund - St Marks Lease payments**

Donations made to contribute to the cost of the St Marks Lease payments, upkeep and maintenance of St Marks building and grounds, owned by Gateway Buildings Trust but leased to Gateway Church

#### **FIAM – Faith in Action Ministries**

A Charity in India, who run a school, churches and outreach projects. Funds have been raised to meet specific needs of the charity from time to time. Members of staff and church members have visited the project.

#### **Woodhouse Community Special Offering**

Funds were raised for local outreach. This is to be spent in the coming year as a small grant making scheme offered to local charities, businesses and individuals seeking to benefit the local community in line with our charitable objectives.

#### **Safe Haven Academy Uganda**

Donations were raised to fund the building of Safe Haven Academy in Agago District, Northern Uganda. This secondary school is being built by a Ugandan charity called Amazing Children Education Foundation, their vision is to give education to over 250 young people in the Agago District of Uganda.

#### **Hope Offering for Christ Central Africa**

An emergency appeal was made through Christ Central Churches for their churches in Africa who were experiencing hardship due to the circumstances of the pandemic. Money raised was passed on to Christ Central Churches (Registered Charity No. 1151447) to support their churches across Africa.

#### **St Marks Ground Special Offering**

Funds were raised to renovate the grounds and building of St Marks, including obtaining planning permission for the cost of applying for grants.

#### **St Marks 'Wedding list'**

Funds were raised for the furnishing and maintaining the interior of St Marks Church when the church first moved into the building.

#### **Student Weekend Away**

Contributions toward food and accommodation of an annual student weekend away.

#### **Church Weekend Away**

Donations taken to raise funds to cover the cost of food and accommodation at the bi-annual Church weekend away.

#### **Make Lunch Grant**

Grant given by Leeds Community Foundation as part of their Healthy Holiday Grant Scheme to provide lunches for families during the school holidays. The grant was topped up by £400 by Tesco Centenary Grant scheme to anyone running the Make Lunch program.

# Gateway Church

Year Ended 31st March 2021

## Notes to the Financial Statements

FC Gateway

Funds raised as subs for the football team for the pitch and changing room hire.

Live@St Marks Festival

Funds raised at a live music event held at the church called Live@ St Marks.

Devoted Festival

Contributions toward food and tickets to the Annual Christ Central Camping Festival.

Cass Ms

The Finance Manager personal contribution towards Fees of a Masters Course in Charity Accounting.

### Restricted Funds in deficit

Pastoral care is a restricted fund in deficit. The trustees have confirmed that resources from unrestricted reserves will be used to meet the obligations of the restricted fund if required.

## 15 Analysis of net assets between funds

	Unrestricted Funds £	Restricted Funds £	Total Funds 2021 £
Tangible Fixed Assets	9,750	-	9,750
Current Assets	63,825	12,418	76,243
Creditors less than 1 year	(4,355)	-	(4,355)
	<u>69,220</u>	<u>12,418</u>	<u>81,638</u>

	Unrestricted Funds £	Restricted Funds £	Total Funds 2020 £
Tangible Fixed Assets	23,586	-	23,586
Current Assets	21,579	31,894	53,472
Creditors less than 1 year	(4,814)	-	(4,814)
	<u>40,350</u>	<u>31,894</u>	<u>72,244</u>

# Gateway Church

Year Ended 31st March 2021

## Notes to the Financial Statements

### 16 Operating lease commitments

The total future minimum lease payments under operating leases are as follows:

	2021	2020
	£	£
Not later than 1 year	28,332	28,332
Later than 1 year and not later than 5 years	141,660	141,660
Later than than 5 years	283,320	311,652
	<u>453,312</u>	<u>481,644</u>

The operating lease is held with Gateway Building Trust for the use of the St Mark's building on a 20 year agreement from the point of signing.

### 17 Contingent Liabilities

Gateway Church has given a limited guarantee against the bank loan In Gateway Buildings Trust. The guarantee states that Gateway Church will be liable to repay all the obligations of the Gateway Buildings Trust loan up to an amount of £420,000 if the trust is unable to meet the loan repay requirements.

### 18 Gateway Building Trust

Gateway Building Trust (Charity Registration Number 1122411 and Company Registration Number 06459552) exists in part to provide buildings for Gateway Church to achieve this aim, St Mark's Church, Leeds was purchased In 2008.

During the year the charity made three donations in kind to Gateway Building Trust. These included the donation of covering the charity's independent examination fees, clock tower repair costs and bike rack sufficing maintenance expenditure. The total of this donation amounts to £2,866.