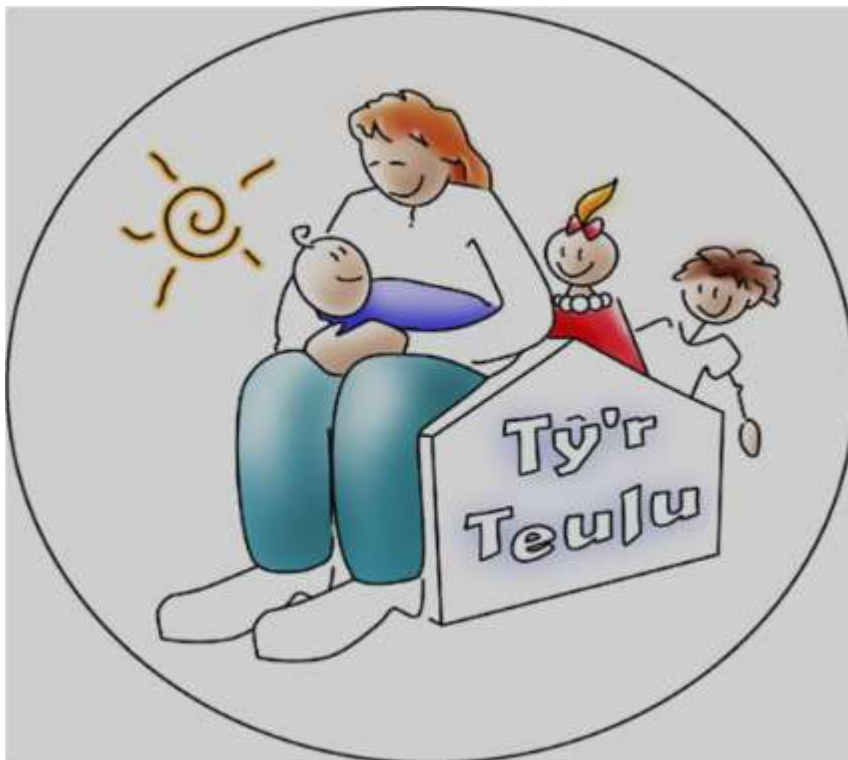


LLANYBYDDER FAMILY CENTRE

Registered Charity Number: 1087515



ANNUAL REPORT 2021 – 2022

BACKGROUND

Llanybydder Family Centre was established as an independent charity in 2001 to help the families of Llanybydder and its surrounding rural areas overcome the effects of low income, poor health, poor housing, social exclusion, rural isolation and a lack of services. The Management Committee was formed by local people with a range of skills and knowledge and a shared interest in the welfare of their community.



Llanybydder is a small rurally isolated town, with a population of 1683 (Census, 2011), which has lost several businesses and local banks to the larger neighbouring towns of Carmarthen and Lampeter. Low paid irregular shift work is provided by its two main industries, an abattoir and horse mart, both hit hard by, and never fully recovered from, the foot-and-mouth epidemic in 2001.

Llanybydder is ranked 854 in the Welsh Index for Multiple Deprivation (WIMD), with an overall ranking of 30-50% most deprived area in Wales. Figures from the WIMD show that 27% of children come from low-income families. Llanybydder is placed in the 10-20% most deprived areas for housing and education.

30.6% of residents have no qualifications, which is 3.8% higher than the Carmarthenshire average.

The Family Centre firstly opened in a portacabin, and this served as the centre from 2001 to 2017. At the beginning of 2017, during the harsh winter weather the cabins started to become unsuitable due to leaks, poor heating system and becoming too small. The Management Committee and Co-ordinator discussed with Gwalia management to use a decommissioned room in their Cwm Aur Independent Living Facility. The idea was embraced by both parties and the Family Centre moved into their new home in July 2017.



The centre was ready in its new home for the 2017 school summer holidays. The staff introduced the centre to the residents and staff of Cwm Aur and residents could not have been happier that the room was being used for such an amazing facility. Many of the residents came daily to see the families bring with them pop, biscuits and cakes for all. Because of this it was decided to consider developing a project, working with the families and the residents, and our Intergenerational Project was born.

The staff consist of a Manager and a Play Worker. All staff receive ongoing training to keep them up to date with the latest information, guidance and legislation. All members of staff are regularly trained in Child Protection and Safeguarding, Food Hygiene, First Aid and are subject to DBS checks every three years. The Family Centre is managed by local people who sit on the Management Committee. They bring a wealth of experience, knowledge and qualifications.

What we have done 2021 – 2022

Our over-arching aim is to support families through the many difficulties they may face, to promote and enhance the relationship between the adult and child through working together in different sessions, and to ensure children have as many new experiences as possible during their early years.

Our service has been more important than ever, as we emerge from the Covid-19 restrictions. Families were reporting feeling isolated, and in response to this a lot of our work this year focused on wellbeing. We organised Coffee, Cake & Catch-up sessions, where there was no pressure, just a chance for families to enjoy a warm drink, have a chat and let the children burn off some energy together.

There were also some concerns given surrounding the speech & language, and social skills of children, particularly those born during lock-down periods. Many children had spent a lot of their very early years without the interaction with other adults and peers that previous generations of children had enjoyed. We made it our aim to facilitate more Language & Play sessions than we had done before, and developed a School Readiness course, ready for those starting Cylch Meithrin or school.

The whole year was governed by Covid-19 safety guidelines, directed by the Welsh Government. Under the restrictions, we had to run a booking system, to control numbers, and had to limit the time of sessions to an hour each, in order to prevent people being in the same room for too long, and to accommodate the extra cleaning requirements that were in place. It was still a far cry from the drop-in service that we have provided for many years, but our families safety was always out top priority.

Pre-loved Clothes Scheme

During the initial period of lockdown, staff set-up a pre-loved clothes scheme. This was in response to families needing clothes for their children, but not being able to access clothes shops due to lockdowns and travel limitations. The Family Centre also recognised that there

were families in need due to financial losses, be that redundancy, reduced working hours or being furloughed.

During 2021-2022 we continued the scheme, distributing clothes from the Centre, and were able to support approximately 50 families from the local community.

Families are extremely grateful for the scheme, and we regularly hear comments about how expensive children's clothes can be. Families are also glad of the environmental sustainability of the scheme, knowing that the clothes they donate are not only being recycled, but helping other families in need.



Baby Group – 41 sessions

Baby Group has been extremely popular this year again. We organised a mixture of messy and sensory play, designed to provide new and stimulating experiences for children aged 0-18 months. We also went on walks, exploring the local area. Staff offer advice on breastfeeding, weaning, sleeping problems, teething and a whole host of other problems that can arise for new families. If staff do not immediately know the answer, or are unable to offer advice, they know where to signpost and refer to those who can help.



Messy play with cocoa powder!



Sensory fun with light-up pebbles!



Messy Play with spaghetti!



Bubble Play!

Halloween Messy Play!

Two 6-week courses of Peter Walker Developmental Baby Massage were delivered and were a great success. We had extremely positive feedback which indicated that 100% of participants felt that the course had given them increased confidence and tools to support their child's developmental needs.

Active Baby & You was a 4-week course, designed to give families the tools to meet the physical needs of their children, focusing on physical literacy in the first 1000 days of life. The course helped families to support the development of movement through play and physical activity.

Toddler Groups

To support older children, we facilitate a range of different activities for toddlers. During this year we have organised:

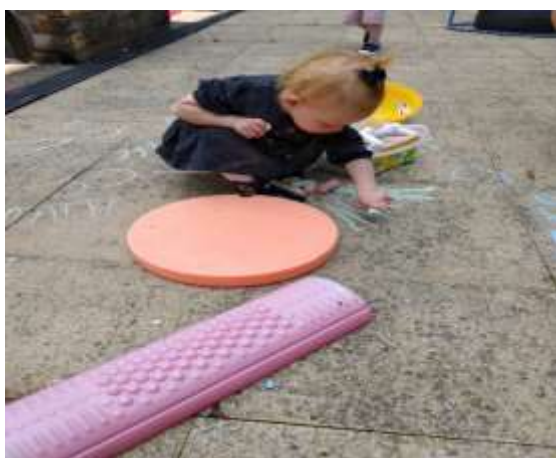
- 23 Stay & Play Garden sessions
- 19 Indoor Stay & Play sessions
- 33 Cylch Ti a Fi sessions
- 23 Crafts sessions
- 8 Move it! Move it! | Physical Activity for Toddlers
- 4 Stori Actif sessions



Washing the cars at the Car Wash



Planting flowers



Outdoor Chalks



Bonfire Night Crafts



Remembrance Day Crafts



Developing fine-motor skills in the 'snow'!



Santes Dwywnen crafts



*Authentic Chinese clothes and fabrics for
Chinese New Year*



Developing our gross motor skills!

From evaluation surveys (18 responses) we know that:

94.4% of families believe that The Family Centre has helped their child's behaviour in a group setting, and improved their social skills through interaction with others (5.6% neutral)

88.9% of families believe that the Family Centre has helped to improve their child's speech & language skills (11.1% neutral)

Llanybydder Park

We attended Llanybydder Park fifteen times throughout the year – using the equipment, having picnics, and making the most of the lovely green space provided for us. We had our Sports Day at the park during the summer and had a lovely Story and Song session there too. Thank you to Llanybydder & Rhydcymerau Community Council for maintaining such a lovely space for the families of the local area.



Parachute play



Egg and Spoon race



Obstacle Course



Fun on the swings

Grants and additional funding

Thanks to additional funding from the Welsh Government, we were given these tremendous bikes, which we have had fun with around the garden! We also received a grant from the Mudiad Meithrin which allowed us to purchase a fantastic stock of Welsh language resources and books.



We were also able to develop our role-play area in to a much more inviting area. We purchased many items, in order to be able to rotate the area termly, from a 'Home' to a 'Café', and in the coming terms you will be able to see a 'Garden Centre', and take a trip to the 'Dentist'! Feedback from our families has been great, and it has been wonderful to see the children immersed in imaginative play, and developing their social skills.



Thanks to the Welsh Government's 'Love Reading' project, we received a large number of books, which we were able to give to our families, free of charge. This was gratefully appreciated by our families, as they all commented on the price of books, and the tremendous financial pressures they were facing, in the current climate. It gave families a real opportunity to read together, increasing bonds and literacy in our children.



Trips and days out

Taking families on days out and trips allows them to explore local areas, that they may not otherwise experience. It gives them the confidence to attend, as they know they will not be alone, and also gives the children new experiences.



Cors Caron Nature Reserve



Fun with Crazy Clayton, the popular children's entertainer

School Readiness

The School Readiness course is a four-week course, focusing on the main priorities to consider before a child starts school. The course was developed with both children AND parents in mind, as it is a big transition for both. Staff spoke with local schools and Cylch Meithrins, to see if there were any particular issues they were noticing, with incoming pupils, that could be targetted through these sessions.

Week one focuses on the importance of 'Mark-Making' in the early years, as a precursor to writing. Children's hand muscles need strengthening with a wide range of resources and experiences before they are capable of holding a pencil to write.



Painting with a spaghetti brush!

Week two focuses on social skills and independence. Children are encouraged to practice their fine-motor skills, in order to gain independence (doing zips and buttons up on a coat, being able to use the bathroom by themselves and so on). Children also play together in the role play area, to develop their social skills alongside their peers.

Week three focuses on speech and language. Parents are encouraged to model the art of conversation, and use open-ended questions, with their children, using a wide range of resources – toys, jigsaws, flash cards. This also develops vocabulary.

In week four, we discuss emotional preparation, and give advice and tips on how to manage strong feelings. Participants always receive a certificate for completing the course too!



Emotions with play-dough



School Readiness Certificate! Well done!

Healthy Eating on a Budget

After staff had completed their Level 2 Community Nutrition and Food Skills in the Early Years training, we delivered a five-week Healthy Eating on a Budget course, using recipes from the Love Food, Hate Waste website.

Families attended the session, and were shown how to make the recipe. They were then able to take packs of ingredients home, with a recipe card, and make the meals for themselves and their families. We had excellent feedback from the sessions – parents were glad of the new ideas, and the use of ingredients that may not otherwise have bought themselves.

Children were keen to try the new recipes at the Centre, and parents were surprised that their child was eating certain things that, again, they may not necessarily have otherwise!



Carrot & Coriander Soup



Pasta Bake

Other



Face painting fun



Halloween Messy Bug Hunt



Pumpkin Messy Play



*Best Halloween Fancy Dress – judged by
Mr & Mrs A. Lewis of Llanybydder Rugby Club*



Decorating the Christmas Tree



*A generous donation of Selection Boxes
gratefully received from Dunbia*



Making pancakes

Facts & Figures 2021 – 2022 :

Baby Group (Sensory/Messy Play/Walks) – 41

Park sessions – 15

Stay & Play Garden sessions – 23

Stay & Play - 19

Cylch Ti a Fi – 33

School Readiness – 2 x 4-week sessions

Active Baby & You – 4

Coffee, Cake & Catch up – 4

Home Safety Session – 2

Wednesday Walking – 4

Crafts -23 (incl. Father's Day, Bonfire Night, Remembrance Day, Christmas, Chinese New Year,

Mother's Day, Santes Dwywnwen, St. David's Day & Valentines)

Face Painting Days – 2

Move it! Move it! | Physical activity for Toddlers – 8

Stori Actif – 4

Cooking | Healthy Eating on a Budget - 9

Supporting:

93 families

109 adults

149 children

Of these adults:

20.18% were unemployed

14.68% were single parents

5.5% were unemployed and single parents

In a survey to encapsulate the whole year (41 responses):

92.7% of respondents stated that The Family Centre has helped to improve their confidence - and/or the confidence of their child(ren) (7.3% neutral)

95.2% of respondents stated that The Family Centre has reduced feelings of isolation and loneliness for them and/or their family (4.8% neutral)

82.9% stated that The Family Centre has helped them or given them ideas on how to improve their wellbeing, or/and the wellbeing of their family (17.1% neutral)

73.1% believed that The Family Centre had helped them improve their relationship with their child(ren), and/or given them advice and ideas on how to improve their relationship (26.9% neutral)

Community & Partnership Working

We have used our Social Media platforms to promote and share notices and information from local organisations, such as Bro Pedr Medical Group, Llanybydder Primary School and Cylch Meithrin Llanybydder.

Physical engagement proved difficult, due to the different restrictions that were in place, however we maintained contact with the local schools, Cylch Meithrin and Llanybydder Village Committee and hope to be in a better position to engage in the coming year.

We were lucky enough to receive additional funding from the Welsh Government's Child Development Fund, which allowed us to facilitate fun, sensory sessions with Arts 4 Wellbeing and also Rubba Bubba Baby Yoga with Rach.



Families

We continue to welcome new families to the centre and they hear about us through other parents, as sometimes they are families who are new to the area or are new parents living in the village. We advertise the centre through the use of Facebook and posters in the community. The Health Visitor promotes the centre during her surgeries and visits to families and we rely on word of mouth. Many of the parents feel isolated and come to the Family Centre for company for themselves and their children. Many families have had us recommended to them by other families, and some come of their own accord. New friendship develops amongst these families that gradually extend outside the Family Centre environment. We regularly ask for ideas and suggestions from parents and older children to ensure that we are delivering different activities suitable for all. We ensure we receive feedback from users in order that we deliver the best quality work, workshops, activities and information. We ensure that the centre is user-lead and all feedback is taken back to committee meetings and reported on.

Timetables

Llanybydder Family Centre is open 4 days a week.

Monday	Closed
Tuesday	9 am – 3pm
Wednesday	9 am – 3 pm
Thursday	9 am – 3 pm
Friday	9 am – 3 pm

Monthly timetables are placed on Facebook, and physical copies are placed in the Centre, and are available to take home, or via e-mail for those who do not use social media.

Project Partners – Partnership Working

Clients' specific needs have been identified and referrals have been made when more specialised help has been needed, ensuring the support we provide is appropriate. We hope that during the next year, there will be increased engagement with Health Professionals, such as the Health Visitor. This has been problematic this year due only having one Health Visitor covering an extremely large area.

To provide a comprehensive holistic service, it is essential that the Family Centre develops and maintains productive links with other statutory and voluntary organisations in the community and further afield. In addition to independent trainers who run courses from time to time the organisations that the Family Centre works with are as follows:

Plant Dewi – The Strategic Manager from Plant Dewi visits the centre on a regular basis, attends Committee Meetings and supports the Manager and Management Committee in the running of the centre.

Cwm Aur and Cwm Aur Friendship Group – We have a strong relationship with Cwm Aur, who help us facilitate our Intergenerational Project. We advertise their Community Café, and have held a Bingo Evening, a Community Fun BBQ, and a Christmas Fair in conjunction with them.

Cymraeg i Blant – We have regular visits from Cymraeg i Blant who have held successful Baby and Yoga Massage and Story & Song sessions through the medium of Welsh.

Llanybydder Village Committee– the Family Centre takes part in their community organised events when possible.

Early Years Wales – Ongoing provision of information, training, and resources.

Mudiad Meithrin – Ongoing provision of information, training and resources.

Family Centre Network – the Manager attends monthly meetings that ensure that all the Carmarthenshire Family Centres are updated on training and funding opportunities, policies and research, and events in which they can take part.

Llanybydder Primary School & Cylch Meithrin Llanybydder – We have regular contact with the local school and Cylch Meithrin and use their valuable input when developing sessions and courses.

WCVA and CAVS – Keep us updated on training and funding information as well as other information that may be relevant to our service

Health Visitor – Previously visited the centre once a month to help with any concerns the parents may have, and we hope to resume this in the near future.

Carmarthenshire County Council – with access to training and their Housing Officer.



COMMENTS FROM SERVICE USERS

'My daughter was born during the Pandemic. As a result of this for over a year of her life she never seen any children her age. We were very isolated. Coming to the family centre has helped me and her greatly. She has made friends and has learned how to share and play nicely. They have a fantastic assortment of resources that change often. They encourage the children to join in. For me also it has done wonders for my mental health. Getting me out the house and talking to other parents has been hugely beneficial. Hopefully moving forward with the restrictions loosening, we will be able to do more. Small things like having lunch at the centre, a cup of tea etc'

'Llanybydder is more than just a centre for families to go to for play sessions. It's like coming to see close friends who welcome you with open arms and make you feel like you're home. Since having my son the centre has been our sanctuary where he can learn and develop and I have the support that actually I'm doing alot better than I think I am! It's been particularly difficult becoming a new mum in the pandemic as I've had very little support from health visitors and family but I've been able to get that from the centre and without it I would have struggled more than I did. I am so lucky to have such a wonderful place in my area!'

'Llanybydder Family centre is like a family you choose'

Comment from Debbie Vince, Strategic Manager for Carmarthenshire Family Centres of the Plant Dewi Network

"Llanybydder Family Centre is a large, warm welcoming space for parents and children alike. It has grown to become an essential part of the community, helping, nurturing, and supporting families. It allows a safe space for parents and children to get together, socialise and learn new skills. The staff are friendly, well- informed, and organised. Feedback from parents has been extremely positive with 100% of parents agreeing that it has helped to improve their ability to support their children's learning and developmental needs.

The centre staff are also very knowledgeable about their community and work well with other projects in the area, always seeking out partnerships in how best to serve the local community as well as avoiding duplication of services.

The family centre staff deserve a huge pat on the back for thinking outside the box in engaging parents and children alike during the pandemic. They have delivered sessions that have worked within Government guidelines, and just by being an ear at the end of a phone, when needed, they have been a lifeline for many families feeling isolated and alone"

Lessons learned

The problems that families face can be multiple, ranging from child-related problems - such as behaviour, language, potty training and sleep issues - to debt and relationship breakdowns. We have learned that it is essential to have an accessible range of contacts (outside professionals and organisations, both statutory and voluntary) with whom we can liaise so that our support is effective in helping a family overcome their problems.

Challenges for the Future

Many health workers were redeployed to other areas within the Health Board during the height of the pandemic, and most educational settings were closed for an extended period of time. Staff were aware that there may be an increase in children with additional learning needs or developmental delays not being identified at key times, and this has come to fruition during this year. Staff have identified some children with immature social skills, from where they should typically be for their stage. As early identification is paramount to better outcomes, we will work closely with external agencies to overcome this increase.

Furthermore, due to the impact of the virus on all areas of life, funding is still being redirected, quite rightly, towards Covid-19 support. While we have been extremely lucky in our funding this year, and are secure for the time being, there is no telling how long the impacts of the crisis are going to be felt. Despite this, we are a strong organisation, and we can prove the need for our services in the local community.

Funding Partners

We would like to thank everyone who has funded the Family Centre over the last year. Without the funding, the Family Centre would not exist as it is a free-of-charge, non-profit-making organisation. It has been essential to maintain a constant flow of income in order to provide a consistency of service for the families of Llanybydder. The funding we have received has enabled us to offer these families high quality support and help in dealing with the complexities of family life.

We would like to thank:



Llanybydder & Rhydcymerau

Community Council

Contact Details

Organisation name: Canolfan Ty'r Teulu, Ty'r Teulu Family Centre
Llanybydder Family Centre

Reg. Charity Number: 1087515

Address: Cwm Aur, Heol Y Dderi,
Llanybydder
Carmarthen
SA40 9AB

Contact name: Kimberly Rees

Tel: 01570 481617

Email: llanybydderfc2@gmail.com

Staff:	Manager	–	Kimberly Rees, BA (Hons)
	Playworker	–	Sonia Evans

Management:

The Family Centre's Management Committee consists of five members of the local community who have a shared and genuine interest in the welfare of local families. Some are professionals with a variety of skills and knowledge and others are parents who use/have used the Family Centre service. They attend Management meetings regularly and are always on hand, as they live locally. They are responsible for the strategic direction that the Centre takes. We are always actively looking for committee members so that we have a committee with a wide range of experiences and knowledge to continue strengthening the Centre.

Chairperson – Sarah Davies has been a member of the Management Committee for the last 10 years and has held the position of Chair for the last 7 years. Sarah hopes to continue on the Committee for as long as she is able, as the Centre is very much needed in our area. Sarah is a stay-at-home Mum with 3 children and found the Centre very helpful when her children were small. Sarah has also been a parent Governor of the local school, where her children attend. She has done this for 3 years.

Trustee – Bev Pold has been on the board of Trustees since 2017. She was a Board member of C4EE and represented Chwarae Teg on Wales Rural Development Programme Monitoring Committee as a Specialist Advisor and Chair of Wales Rural Network. Bev has a particular interest in rural enterprise and gender equality and is the founder of AGRI-FEMM: Economic & Social Equality for Rural Women. Bev was Chair of the Management Board of Antur Teifi (Wales' leading rural enterprise agency). Bev was honoured with the Queen's Award for Enterprise Promotion (QAEP) in 2009. Since 2015, Bev has been a member of Llanybydder & Rhydcymerau Community Council.

Secretary - Ann Smith has 40 years' experience in working within a variety of childcare settings. For many years Ann has been an Assessor delivering childcare training (NVQ, QCF) and for those working in residential childcare settings. Ann has a variety of qualifications and undertakes courses on a regular basis in order to ensure her continuous professional development. Ann has been on the Committee in the Family Centre for many years and is committed to helping the families in local community access a safe and secure place for them to relax, share experiences and to provide facilities to develop the children's skills.

Additional Committee Member – Heather Jones is a long-term resident of Llanybydder, having lived here for over 50 years. She is retired, having worked at the local pharmacy for 14 years. She is the nominated person from St Peter's Church, Llanybydder, by the Parochial Church Council. Heather is the organiser and fund raiser for the Church annual sponsored walk. She has been a member of the Women's Institute (WI) Llanybydder since 1978 and is a long serving President.

Additional Committee Member – Lesley White moved to the area shortly before the pandemic of 2020 hit. Lesley has extensive experience of working with children and has been leader of out-of-school clubs, after-school provision, and children's work with the Church, as well as having children, grandchildren and great-grandchildren. Lesley is also a member of Llanwenog WI.



Charity No. : 1087515

Llanybydder Family Centre

Annual Report and Financial Statements

for the Year Ended 31 March 2022

Arwyn Vobe Accountancy Ltd.
Maesowen
Rhydowen
Llandysul
Ceredigion
SA44 4PY

Llanybydder Family Centre

Contents

Reference and Administrative Details	1
Independent examiner's report	2
Statement of financial activities	3
Balance Sheet	4
Notes to the financial statements	5 to 9

The following page do not form part of the statutory financial statements:

Llanybydder Family Centre
Reference and Administrative Details

Charity name	Llanybydder Family Centre
Trustees	Sarah Davies Bev Pold Heather Jones Ann Smith Lesley White
Secretary	Ann Smith
Chair	Sarah Davies
Treasurer	Bev Pold
Accountant	Arwyn Vobe Accountancy Ltd. Maesowen Rhydowen Llandysul Ceredigion SA44 4PY

Independent Examiner's Report to the Trustees of Llanybydder Family Centre

I report on the accounts of the Trust for the year ended 31 March 2022, which are set out on pages 3 to 9.

Respective responsibilities of trustees and examiner

The trustees are responsible for the preparation of the accounts. The trustees consider that an audit is not required for this year under section 144(2) of the Charities Act 2011 (the 2011 Act) and that an independent examination is needed.

It is my responsibility to:

- examine the accounts under section 145 of the 2011 Act;
- follow the procedures laid down in the General Directions given by the Charity Commission under section 145 (5) (b) of the 2011 Act; and
- state whether particular matters have come to my attention.

Basis of independent examiner's report

My examination was carried out in accordance with the General Directions given by the Charity Commission. An examination includes a review of the accounting records kept by the charity and a comparison of the accounts presented with those records. It also includes consideration of any unusual items or disclosures in the accounts, and seeking explanations from you as trustees concerning any such matters. The procedures undertaken do not provide all the evidence that would be required in an audit and consequently no opinion is given as to whether the accounts present a 'true and fair view' and the report is limited to those matters set out in the statement below.

Independent examiner's statement

In connection with my examination, no matter has come to my attention:

- (1) which gives me reasonable cause to believe that in any material respect the requirements:
- to keep accounting records in accordance with section 130 of the Act; and
 - to prepare accounts which accord with the accounting records and comply with the accounting requirements of the 2011 Act
- have not been met; or
- (2) to which, in my opinion, attention should be drawn in order to enable a proper understanding of the accounts to be reached.

.....
Arwyn Vobe Accountancy Ltd.

19 August 2022

Maesowen
Rhydowen
Llandysul
Ceredigion
SA44 4PY

Llanybydder Family Centre

Statement of Financial Activities for the Year Ended 31 March 2022

		Unrestricted Funds	Restricted Funds	Total Funds 2022	Total Funds 2021
	Note	£	£	£	£
Incoming resources					
Incoming resources from generated funds					
Voluntary income	2	712	43,716	44,428	24,822
Total incoming resources		712	43,716	44,428	24,822
Resources expended					
Costs of generating funds					
Costs of generating voluntary income	4	(257)	42,752	42,495	26,523
Governance costs	4	570	-	570	570
Total resources expended		313	42,752	43,065	27,093
Net movements in funds		399	964	1,363	(2,271)
Reconciliation of funds					
Total funds brought forward		15,082	15,815	30,897	33,169
Total funds carried forward		15,481	16,779	32,260	30,898

All incoming resources and resources expended derive from continuing activities.

The charity has no recognised gains or losses for the year other than the results above.

The notes on pages 5 to 9 form an integral part of these financial statements.

Llanybydder Family Centre
Balance Sheet as at 31 March 2022

		2022		2021	
	Note	£	£	£	£
Fixed assets					
Tangible assets	7		1,476		1,737
Current assets					
Cash at bank and in hand		31,354		29,731	
Creditors: Amounts falling due within one year	8	<u>(570)</u>	<u>(570)</u>		
Net current assets			<u>30,784</u>		<u>29,161</u>
Net assets			<u><u>32,260</u></u>		<u><u>30,898</u></u>
<u>The funds of the charity:</u>					
Restricted funds			16,779		15,816
Unrestricted funds					
Revaluation reserve		(144)		(144)	
Unrestricted income funds		<u>15,625</u>	<u>15,226</u>		
Total unrestricted funds			<u>15,481</u>		<u>15,082</u>
Total charity funds			<u><u>32,260</u></u>		<u><u>30,898</u></u>

Approved by the Board on 19 August 2022 and signed on its behalf by:

.....

Sarah Davies
Trustee

The notes on pages 5 to 9 form an integral part of these financial statements.

Llanybydder Family Centre

Notes to the Financial Statements for the Year Ended 31 March 2022

I Accounting policies

Basis of preparation

The financial statements have been prepared under the historical cost convention, as modified by the revaluation of certain fixed assets, and in accordance with the Statement of Recommended Practice 'Accounting and Reporting by Charities (SORP 2005)', issued in March 2005, applicable accounting standards and the Charities Act 2011.

Fund accounting policy

Unrestricted income funds are general funds that are available for use at the trustees' discretion in furtherance of the objectives of the charity.

Restricted funds are those donated for use in a particular area or for specific purposes, the use of which is restricted to that area or purpose.

Further details of each fund are disclosed in note 10.

Incoming resources

Voluntary income including donations and grants that provide core funding or are of a general nature is recognised where there is entitlement, certainty of receipt and the amount can be measured with sufficient reliability.

Resources expended

Liabilities are recognised as soon as there is a legal or constructive obligation committing the charity to the expenditure. All expenditure is accounted for on an accruals basis and has been classified under headings that aggregate all costs related to the category.

Costs of generating funds are the costs associated with attracting voluntary income.

Governance costs

Governance costs include costs of the preparation and examination of the statutory accounts, the costs of trustee meetings and the cost of any legal advice to trustees on governance or constitutional matters.

Support costs

Support costs include central functions and have been allocated to activity cost categories on a basis consistent with the use of resources, for example, allocating property costs by floor areas, or per capita, staff costs by the time spent and other costs by their usage.

Depreciation

Depreciation is provided on tangible fixed assets so as to write off the cost or valuation, less any estimated residual value, over their expected useful economic life as follows:

Plant & Equipment	15% reducing balance basis
-------------------	----------------------------

Llanybydder Family Centre

Notes to the Financial Statements for the Year Ended 31 March 2022

..... continued

Pensions

The charity operates a defined contribution pension scheme. Contributions are charged in the statement of financial activities as they become payable in accordance with the rules of the scheme.

2 Voluntary income

	Unrestricted Funds £	Restricted Funds £	Total Funds 2022 £	Total Funds 2021 £
<u>Donations and legacies</u>				
Appeals and donations	682	-	682	-
Social lotteries	30	-	30	-
	<u>712</u>	<u>-</u>	<u>712</u>	<u>-</u>
<u>Grants</u>				
Trusts and foundations	-	43,716	43,716	24,822
	<u>712</u>	<u>43,716</u>	<u>44,428</u>	<u>24,822</u>

3 Grants receivable

	Unrestricted Funds £	Restricted Funds £	Total Funds 2022 £	Total Funds 2021 £
Trusts and foundations	-	43,716	43,716	24,822

Llanybydder Family Centre

Notes to the Financial Statements for the Year Ended 31 March 2022

..... continued

4 Total resources expended

	Grants	Governance	Total
	£	£	£
Direct costs			
Publicity costs	1,964	-	1,964
Employment costs	32,053	-	32,053
Establishment costs	4,961	-	4,961
Repairs and maintenance	1,033	-	1,033
Printing, posting and stationery	292	-	292
Cleaning	155	-	155
Travel and subsistence	982	-	982
Advertising and promotion	574	-	574
Accountancy fees	144	570	714
Legal and professional costs	76	-	76
Depreciation of tangible fixed assets	261	-	261
	<u>42,495</u>	<u>570</u>	<u>43,065</u>

5 Net incoming/(outgoing) resources

Net incoming/(outgoing) resources is stated after charging:

	2022	2021
	£	£
Depreciation of owned assets	<u>261</u>	<u>306</u>

6 Employees' remuneration

The aggregate payroll costs of these persons were as follows:

	2022	2021
	£	£
Wages and salaries	30,009	21,051
Other pension costs	<u>1,123</u>	<u>806</u>
	<u>31,132</u>	<u>21,857</u>

No employee received emoluments of more than £60,000 during the year (2021 - No. 0).

Llanybydder Family Centre

Notes to the Financial Statements for the Year Ended 31 March 2022

..... continued

7 Tangible fixed assets

	Plant & Equipment £	Fixtures, fittings and equipment £	Total £
<u>Cost or Valuation</u>			
As at 1 April 2021 and 31 March 2022	2,620	1,986	4,606
<u>Depreciation</u>			
As at 1 April 2021	2,103	766	2,869
Charge for the year	78	183	261
As at 31 March 2022	2,181	949	3,130
<u>Net book value</u>			
As at 31 March 2022	439	1,037	1,476
As at 31 March 2021	517	1,220	1,737

8 Creditors: Amounts falling due within one year

	2022 £	2021 £
Trade creditors	570	570

9 Pension scheme

Defined contribution pension scheme

The charity operates a defined contribution pension scheme. The pension cost charge for the period represents contributions payable by the charity to the scheme and amounted to £1,123 (2021 - £806).

There were no outstanding or prepaid contributions at either the beginning or end of the financial year.

Llanybydder Family Centre

Notes to the Financial Statements for the Year Ended 31 March 2022

..... continued

10 Analysis of funds

	At 1 April 2021	Incoming resources	Resources expended	At 31 March 2022
	£	£	£	£
General Funds				
General Reserves	15,082	712	(313)	15,481
Restricted Funds				
The Henry Smith Charity	-	-	-	-
Garfield Weston	1	-	(1)	-
Awards for All	-	-	-	-
Families first	(1)	2,000	(1,999)	-
Mudiad Meithrin	-	310	(310)	-
Llanybydder Community Council	373	-	(373)	-
BBC Children In Need	-	8,895	(8,895)	-
Dewi Davies	-	-	-	-
Foyle	-	-	-	-
William Hill Brown	3,374	-	(419)	2,955
Masonic	-	-	-	-
Pobl	-	-	-	-
Nineveh	356	-	(356)	-
Furlough Scheme	379	-	-	379
CFiW	1,974	-	(1,974)	-
Lottery	9,136	32,072	(28,048)	13,160
Oakdale	223	-	(223)	-
Nisa	-	439	(154)	285
	15,815	43,716	(42,752)	16,779
	30,897	44,428	(43,065)	32,260

Charity No. : 1087515

Llanybydder Family Centre

Annual Report and Financial Statements

for the Year Ended 31 March 2022

Arwyn Vobe Accountancy Ltd.
Maesowen
Rhydowen
Llandysul
Ceredigion
SA44 4PY

Llanybydder Family Centre

Contents

Reference and Administrative Details	1
Independent examiner's report	2
Statement of financial activities	3
Balance Sheet	4
Notes to the financial statements	5 to 9

The following page do not form part of the statutory financial statements:

Llanybydder Family Centre
Reference and Administrative Details

Charity name	Llanybydder Family Centre
Trustees	Sarah Davies Bev Pold Heather Jones Ann Smith Lesley White
Secretary	Ann Smith
Chair	Sarah Davies
Treasurer	Bev Pold
Accountant	Arwyn Vobe Accountancy Ltd. Maesowen Rhydowen Llandysul Ceredigion SA44 4PY

Independent Examiner's Report to the Trustees of Llanybydder Family Centre

I report on the accounts of the Trust for the year ended 31 March 2022, which are set out on pages 3 to 9.

Respective responsibilities of trustees and examiner

The trustees are responsible for the preparation of the accounts. The trustees consider that an audit is not required for this year under section 144(2) of the Charities Act 2011 (the 2011 Act) and that an independent examination is needed.

It is my responsibility to:

- examine the accounts under section 145 of the 2011 Act;
- follow the procedures laid down in the General Directions given by the Charity Commission under section 145 (5) (b) of the 2011 Act; and
- state whether particular matters have come to my attention.

Basis of independent examiner's report

My examination was carried out in accordance with the General Directions given by the Charity Commission. An examination includes a review of the accounting records kept by the charity and a comparison of the accounts presented with those records. It also includes consideration of any unusual items or disclosures in the accounts, and seeking explanations from you as trustees concerning any such matters. The procedures undertaken do not provide all the evidence that would be required in an audit and consequently no opinion is given as to whether the accounts present a 'true and fair view' and the report is limited to those matters set out in the statement below.

Independent examiner's statement

In connection with my examination, no matter has come to my attention:

- (1) which gives me reasonable cause to believe that in any material respect the requirements:
 - to keep accounting records in accordance with section 130 of the Act; and
 - to prepare accounts which accord with the accounting records and comply with the accounting requirements of the 2011 Acthave not been met; or
- (2) to which, in my opinion, attention should be drawn in order to enable a proper understanding of the accounts to be reached.

.....
Arwyn Vobe Accountancy Ltd.

19 August 2022

Maesowen
Rhydowen
Llandysul
Ceredigion
SA44 4PY

Llanybydder Family Centre

Statement of Financial Activities for the Year Ended 31 March 2022

		Unrestricted Funds	Restricted Funds	Total Funds 2022	Total Funds 2021
	Note	£	£	£	£
Incoming resources					
Incoming resources from generated funds					
Voluntary income	2	712	43,716	44,428	24,822
Total incoming resources		712	43,716	44,428	24,822
Resources expended					
Costs of generating funds					
Costs of generating voluntary income	4	(257)	42,752	42,495	26,523
Governance costs	4	570	-	570	570
Total resources expended		313	42,752	43,065	27,093
Net movements in funds		399	964	1,363	(2,271)
Reconciliation of funds					
Total funds brought forward		15,082	15,815	30,897	33,169
Total funds carried forward		15,481	16,779	32,260	30,898

All incoming resources and resources expended derive from continuing activities.

The charity has no recognised gains or losses for the year other than the results above.

The notes on pages 5 to 9 form an integral part of these financial statements.

Llanybydder Family Centre
Balance Sheet as at 31 March 2022

		2022		2021	
	Note	£	£	£	£
Fixed assets					
Tangible assets	7		1,476		1,737
Current assets					
Cash at bank and in hand		31,354		29,731	
Creditors: Amounts falling due within one year	8	<u>(570)</u>	<u>(570)</u>		
Net current assets			<u>30,784</u>		<u>29,161</u>
Net assets			<u><u>32,260</u></u>		<u><u>30,898</u></u>
<u>The funds of the charity:</u>					
Restricted funds			16,779		15,816
Unrestricted funds					
Revaluation reserve		(144)		(144)	
Unrestricted income funds		<u>15,625</u>	<u>15,226</u>		
Total unrestricted funds			<u>15,481</u>		<u>15,082</u>
Total charity funds			<u><u>32,260</u></u>		<u><u>30,898</u></u>

Approved by the Board on 19 August 2022 and signed on its behalf by:

.....

Sarah Davies
Trustee

The notes on pages 5 to 9 form an integral part of these financial statements.

Llanybydder Family Centre

Notes to the Financial Statements for the Year Ended 31 March 2022

I Accounting policies

Basis of preparation

The financial statements have been prepared under the historical cost convention, as modified by the revaluation of certain fixed assets, and in accordance with the Statement of Recommended Practice 'Accounting and Reporting by Charities (SORP 2005)', issued in March 2005, applicable accounting standards and the Charities Act 2011.

Fund accounting policy

Unrestricted income funds are general funds that are available for use at the trustees' discretion in furtherance of the objectives of the charity.

Restricted funds are those donated for use in a particular area or for specific purposes, the use of which is restricted to that area or purpose.

Further details of each fund are disclosed in note 10.

Incoming resources

Voluntary income including donations and grants that provide core funding or are of a general nature is recognised where there is entitlement, certainty of receipt and the amount can be measured with sufficient reliability.

Resources expended

Liabilities are recognised as soon as there is a legal or constructive obligation committing the charity to the expenditure. All expenditure is accounted for on an accruals basis and has been classified under headings that aggregate all costs related to the category.

Costs of generating funds are the costs associated with attracting voluntary income.

Governance costs

Governance costs include costs of the preparation and examination of the statutory accounts, the costs of trustee meetings and the cost of any legal advice to trustees on governance or constitutional matters.

Support costs

Support costs include central functions and have been allocated to activity cost categories on a basis consistent with the use of resources, for example, allocating property costs by floor areas, or per capita, staff costs by the time spent and other costs by their usage.

Depreciation

Depreciation is provided on tangible fixed assets so as to write off the cost or valuation, less any estimated residual value, over their expected useful economic life as follows:

Plant & Equipment	15% reducing balance basis
-------------------	----------------------------

Llanybydder Family Centre

Notes to the Financial Statements for the Year Ended 31 March 2022

..... continued

Pensions

The charity operates a defined contribution pension scheme. Contributions are charged in the statement of financial activities as they become payable in accordance with the rules of the scheme.

2 Voluntary income

	Unrestricted Funds £	Restricted Funds £	Total Funds 2022 £	Total Funds 2021 £
<u>Donations and legacies</u>				
Appeals and donations	682	-	682	-
Social lotteries	30	-	30	-
	<u>712</u>	<u>-</u>	<u>712</u>	<u>-</u>
<u>Grants</u>				
Trusts and foundations	-	43,716	43,716	24,822
	<u>712</u>	<u>43,716</u>	<u>44,428</u>	<u>24,822</u>

3 Grants receivable

	Unrestricted Funds £	Restricted Funds £	Total Funds 2022 £	Total Funds 2021 £
Trusts and foundations	-	43,716	43,716	24,822
	<u>-</u>	<u>43,716</u>	<u>43,716</u>	<u>24,822</u>

Llanybydder Family Centre

Notes to the Financial Statements for the Year Ended 31 March 2022

..... continued

4 Total resources expended

	Grants	Governance	Total
	£	£	£
Direct costs			
Publicity costs	1,964	-	1,964
Employment costs	32,053	-	32,053
Establishment costs	4,961	-	4,961
Repairs and maintenance	1,033	-	1,033
Printing, posting and stationery	292	-	292
Cleaning	155	-	155
Travel and subsistence	982	-	982
Advertising and promotion	574	-	574
Accountancy fees	144	570	714
Legal and professional costs	76	-	76
Depreciation of tangible fixed assets	261	-	261
	<u>42,495</u>	<u>570</u>	<u>43,065</u>

5 Net incoming/(outgoing) resources

Net incoming/(outgoing) resources is stated after charging:

	2022	2021
	£	£
Depreciation of owned assets	<u>261</u>	<u>306</u>

6 Employees' remuneration

The aggregate payroll costs of these persons were as follows:

	2022	2021
	£	£
Wages and salaries	30,009	21,051
Other pension costs	<u>1,123</u>	<u>806</u>
	<u>31,132</u>	<u>21,857</u>

No employee received emoluments of more than £60,000 during the year (2021 - No. 0).

Llanybydder Family Centre

Notes to the Financial Statements for the Year Ended 31 March 2022

..... continued

7 Tangible fixed assets

	Plant & Equipment £	Fixtures, fittings and equipment £	Total £
<u>Cost or Valuation</u>			
As at 1 April 2021 and 31 March 2022	2,620	1,986	4,606
<u>Depreciation</u>			
As at 1 April 2021	2,103	766	2,869
Charge for the year	78	183	261
As at 31 March 2022	2,181	949	3,130
<u>Net book value</u>			
As at 31 March 2022	439	1,037	1,476
As at 31 March 2021	517	1,220	1,737

8 Creditors: Amounts falling due within one year

	2022 £	2021 £
Trade creditors	570	570

9 Pension scheme

Defined contribution pension scheme

The charity operates a defined contribution pension scheme. The pension cost charge for the period represents contributions payable by the charity to the scheme and amounted to £1,123 (2021 - £806).

There were no outstanding or prepaid contributions at either the beginning or end of the financial year.

Llanybydder Family Centre

Notes to the Financial Statements for the Year Ended 31 March 2022

..... continued

10 Analysis of funds

	At 1 April 2021	Incoming resources	Resources expended	At 31 March 2022
	£	£	£	£
General Funds				
General Reserves	15,082	712	(313)	15,481
Restricted Funds				
The Henry Smith Charity	-	-	-	-
Garfield Weston	1	-	(1)	-
Awards for All	-	-	-	-
Families first	(1)	2,000	(1,999)	-
Mudiad Meithrin	-	310	(310)	-
Llanybydder Community Council	373	-	(373)	-
BBC Children In Need	-	8,895	(8,895)	-
Dewi Davies	-	-	-	-
Foyle	-	-	-	-
William Hill Brown	3,374	-	(419)	2,955
Masonic	-	-	-	-
Pobl	-	-	-	-
Nineveh	356	-	(356)	-
Furlough Scheme	379	-	-	379
CFiW	1,974	-	(1,974)	-
Lottery	9,136	32,072	(28,048)	13,160
Oakdale	223	-	(223)	-
Nisa	-	439	(154)	285
	15,815	43,716	(42,752)	16,779
	30,897	44,428	(43,065)	32,260

