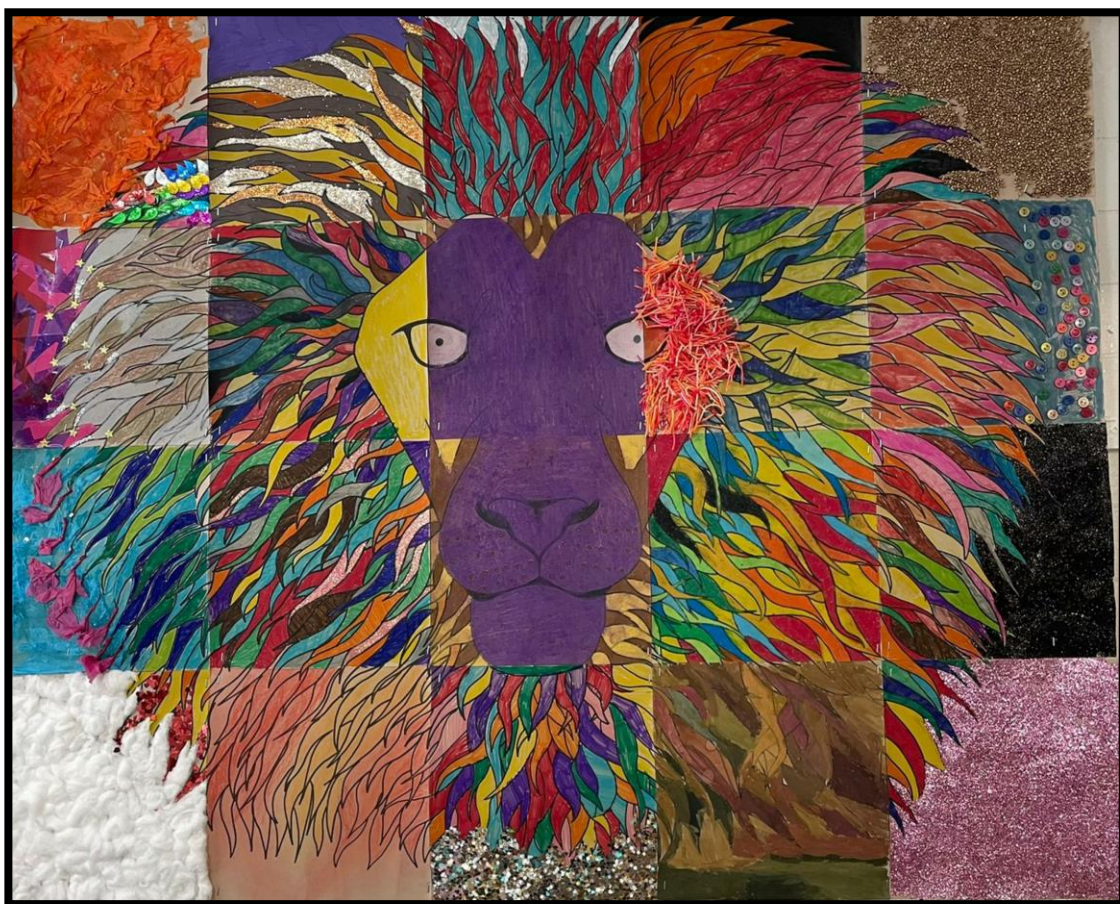


ALTERNATIVES ACTIVITY CENTRE

ANNUAL REPORT FOR 2021

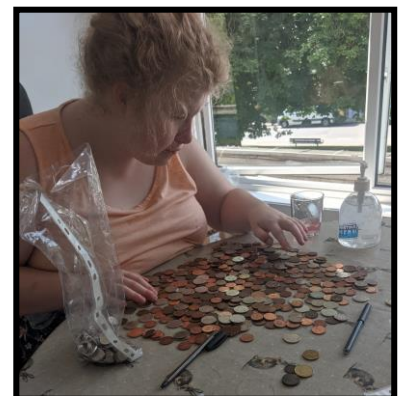


Charity Registration Number: 1086981
Registered Company Number: 4075948

ALTERNATIVES ACTIVITY CENTRE ANNUAL REPORT FOR 2021

Contents

Section 1	Mission Statement Introduction & Background
Section 2	Who We Are
Section 3	Chair's Report for 2021
Section 4	Activities & Services
Section 5	Service Manager's Review of 2021
Section 6	Staff Contribution to Report
Section 7	Service User Contribution to Report
Section 8	Our Thanks
Section 9	Annual Accounts for 2021



ALTERNATIVES ACTIVITY CENTRE ANNUAL REPORT FOR 2021

Centre Address: Alternatives Activity Centre
The Watson Rooms @ St. Augustine's Church
Upper Dale Road
Derby, DE23 8BP
Telephone: Derby (01332) 774300
Email Address: alternatives123@yahoo.com

Shop Address: 21-23 Chapel Side, Chapel Street
Spondon
Derby, DE21 7JQ
Telephone: Derby (01332) 660536
Email Address: alternativescharityshop@yahoo.co.uk

House Six Address: 6 Chapel Side, Chapel Street
Spondon
Derby, DE21 7JQ
Telephone: Derby (01332) 660536
Email Address: alternatives123@yahoo.com

Charity Registration Number: 1086981
Registered Company Number: 4075948



Section 1

Introduction & Background

Alternatives Activity Centre is a registered charity that provides support for adults with learning disabilities in the form of an activity-based day centre, a training shop, an independent living skills house and community support.

2021 was our 31st year of delivering services in Derby for adults with learning disabilities. We are extremely proud of all our achievements.

Our Centre, Training Shop and HOUSE SIX which are staffed by a highly skilled team of paid employees, volunteers and students aims to work with each individual Centre User or Learner to enable them to develop, grow and achieve their full potential. Intervention with each individual focuses on ensuring that they achieve something real and meaningful from each session.

We aim to develop and increase;

- self esteem and confidence

by joining in group and individual craft activities, discussion groups, music/dance/singing groups, volunteer duties, learning new things, experimenting with 'taster' sessions, problem solving, speaking up (self advocacy) etc

- independence skills

by joining the cookery group, shopping project, using the phone, using the computer and the Internet, etc

- employability skills

by learning about work, being a volunteer at the Centre or a Learner in the Training Shop, problem solving, speaking up (self advocacy) etc

- creative skills

by joining in our craft workshops, music groups, contributing to pieces of artwork for displays, etc

- independent living skills

by learning all types of home skills within our own independent living skills setting

We aim to promote:

- healthier lifestyles

by joining in the Active with Amy/Nat sessions, our daily music/exercise group and relaxation group, using exercise equipment, walking groups, basketball, healthy options in our Coffee Bar, health promotion information, health promotion visitors and via our community support programme at the Gym and swimming pool.

Alternatives Activity Centre was first registered as a charity in 1990 after a steering group was set up by professionals in the field of learning disabilities. Later in 2001, it became a charitable company. The Memorandum and Articles of Association state clearly how Trustees are recruited. The board provides a full induction for new Trustees and an introduction to the decision making processes. Ongoing training and development for all Trustees is both available and encouraged. A training needs analysis/skills audit is carried out each year. Some of the original steering group remain on the Board of Trustees today. The Committee is made up of representatives from centre-users, parent/carers, former staff, education and social work professionals. Several staff members regularly attend and contribute to trustee meetings.

The aims and objectives of Alternatives today still reflect the original Mission Statement that was compiled by the steering group following their research into the needs of people with learning disabilities. Our services help to reduce the risk of social isolation for many people who use them and we work with each individual to build confidence, self-esteem and to improve/increase/retain the skills essential to cope with day to day life.

2021, like 2020, was a very challenging year due to the coronavirus pandemic.

The pandemic threw many challenges our way but we made it through safely and were able to offer adapted services to most of the individuals that we support.

2021 also saw the eleventh birthday of the 'Training Shop'. This project offers training placements for adults with learning disabilities within our own charity shop. This project complements the preparation for work skills we offer within the Centre. The shop is now an established 6 day per week service.

The activity-based day centre offers development opportunities in a unique, supportive community based environment on three weekdays between 9.00am and 3.00pm. Around 20-25 people per day use the Centre from a user group of around 50 individuals. In order to have the social distance space we needed to keep everyone safe we were able to use the upstairs part of St. Augustine's Church in an area we call the Parish Rooms.

2021 saw a major achievement for us – after many years of planning we were able to secure a loan and grant which enabled us to purchase Number 6 Chapel Side, a three bedroomed house to be used for training independent living skills.



Section 2

TRUSTEES, STAFF, VOLUNTEERS & STUDENTS IN 2021

MANAGEMENT COMMITTEE

Chair:	Hilary Marshall
Vice Chair:	Gez Grimes
Treasurer	Hannah Gotheridge
Secretary:	Alex Marshall
Trustees :	Azeem Ghaffar Kate Grailey Vinette Lawrence Amanda Murton Linda Murton Richard Moylan – prospective Trustee

STAFF

Chief Executive Officer	Belinda Hadfield
Centre Manager	Natalie Graham
Centre Support Workers	Sarah Brookes Satia Chohan Sam Elliott Rebecca Elyard Jo Evans John Graham Kai Greenwell Amy Palmer Sam Saccone Maureen White
Contractor – Art/Craft	Mel Allen
Charity Shop & Training Centre Manager	Jo Evans
Deputy Shop Manager	John Graham
Shop & House 6 Training Staff	Sarah Brookes Satia Chohan Sam Elliott Rebecca Elyard Kai Greenwell Britt Hadfield Natalie Graham Jane Morrison Amy Palmer

Sam Saccone

COMMUNITY SUPPORT WORKERS

Sarah Brookes
Sam Elliott
John Graham
Kai Greenwell
Natalie Graham
Amy Palmer
Sam Saccone

VOLUNTEERS

Satia Chohan
Gez Grimes
Dave Hadfield
Jane Morrison

Support Staff not employed by Alternatives but whom work on site and whose contributions we appreciate:

Wayne Hallam
Diane Smith

PRESIDENT (from March 2021)

Jane Jones



Section 3

Chair's Report for 2021

The last 12 months have proved to be a year of some quite high 'ups', and some very definite 'downs'.

We have still been very much influenced by the pandemic, especially when the new omicron variant appeared, but thanks to the success of the vaccination programme, its effect has been less dramatic than previously. However, at the end of last year another lockdown looked like a distinct possibility, and immediately Belinda and the staff responded with a comprehensive plan, potential rota, and a pre-prepared letter to go out to all learners if necessary. Thankfully the lockdown did not materialise, and 'business as usual' resumed after Christmas. It was disappointing not to have our usual Christmas party again, but the staff ensured everyone had special treats instead.

It is just over a year (24.2.21) since Belinda and I were invited to a 'due diligence' meeting with CAF [Charities Aid Foundation] to answer many questions and make our case for funding for what came to be known as 'House 6'. Because it is now so well established, and it's hard to imagine Alternatives without it, it feels to me as if we have had this wonderful new project up and running for much longer than 6 months. There is continual movement – development of activities, improvements to the house, and new ideas from staff and learners. (Might one of the next innovations be the introduction of a fish tank?) Thoughts are now being focussed on a small 'garden' area outside the front door which will hopefully provide some easy-to-care-for greenery and a space to sit out.

Staffing across all three sites continues to present some challenges as the projects grow. We know we need at least one more staff member, and hope we can find someone who can be flexible enough to work in all three settings, and cover staff holidays and sickness when necessary.

The situation has encouraged us to give some thought to, and update, our employee application forms, and it also seemed a good opportunity to review our Policies and Procedures – a mammoth task!

As conditions of providing funding, the CAF Committee made several requests and suggestions which we have been trying to put in place. They suggested that we bring in new Trustees to continue to provide a fresh perspective to the organisation. They also feel that we need to develop a 'digital transformation' and that this should include a new website. They were keen for Alternatives to

My thanks to all our learners, who have remained so cheerful and positive despite all the difficulties and ongoing challenges, and have made the most of Alternatives' opportunities. Thanks to Belinda (fundraiser extraordinaire!), all the staff, volunteers, my fellow Trustees, parents and carers, and everyone who has helped in any way to support Alternatives over the last twelve months.

Section 4

Summary of Activities in 2021

2021, like 2020, continued to be challenging. The pandemic still affected us in many ways, however we managed to adapt our services and make changes to ensure we could offer a safe service.

The Activity Base - Centre Services:

Throughout the whole of 2021 we continued to run two activity services from our base at St. Augustine's Church. We called the service from the Parish Rooms 'Upstairs'.

Approximately 6 to 8 people generally are 'Upstairs' each session and everyone else remains in the Watson Rooms. Everyone has the chance during each week to attend both areas.

Upstairs:

This area is used on Mondays and Fridays for art and craft activities in the main. On Wednesdays a group of Centre Users work with Church staff to support the catering for their 'Gathering Place' café. Various exercise and learning activities take place on Wednesdays.

The Watson Rooms:

The Watson Rooms activity base continue to offer a huge variety of opportunities to users over all three days supported by all of the staffing team at various times throughout the week.

Many activities have been introduced or developed over the year. These have included;

Independency Skills:

- Cookery (hot and cold; starters, main courses, desserts, snacks, creating a packed lunch)
 - Menu planning
 - Nutrition
 - Ingredient recognition
 - Vegetable preparation
- Accessing local supermarkets (our shopping project)
 - Making and using a shopping list
 - Finding products
 - Comparing for value/freshness/offers
 - Paying for and packing purchases including using self check-outs
 - Loading and unloading shopping and putting everything in its correct place
 - Checking that we use the oldest products first
- Contributing to group discussions
 - Turn taking
 - Not interrupting
 - Listening to views of others
 - Questioning
 - Answering questions

- Basic literacy and numeracy practise
- Money skills
- Using computers effectively
- Speaking up (self-advocacy)
- Problem solving and managing conflict
- Getting help with problems via using the phone
- Gardening, grounds maintenance and recycling

Creative Skills to Increase Confidence and Self Esteem

- Music Group (restricted in 2021 due to Covid safety)
- Jewellery making (bead necklaces, bracelets)
- Collage
- Mural design
- Knitting & rug making
- Card making (using a variety of techniques)
- Canvas painting
- Christmas decoration making
- Fabric printing

Exercise and Promoting Healthier Lifestyles

- Basketball
- Chair exercises
- Dance exercise groups
- Yoga
- Joining in the Relaxation group
- The walking group
- Balloon badminton

Employability and Vocational Skills

- Volunteering in our Coffee Bar & The Gathering Place
- Developing customer service skills
- Volunteering in our Training Shop (see separate section below)
- Using computers effectively
- Developing an understanding of Health & Safety
- Speaking up (self-advocacy)
- Problem solving and managing conflict
- Getting help with problems via using the phone

We improved the Centre environment

- We continued with our commitment to recycle, re-use and reduce waste
- We replaced and upgraded our displays

The shopping project runs all year and is very useful for teaching valuable life skills including how to social distance and be covid-aware in the community.

During 2020 we had to restrict visits from the 'Pets as Therapy' service but later in the year we resumed these. Janine, Buster and Billy's visits are always a delight. The PAT service provides an excellent opportunity for our users to spend time with very friendly dogs and to learn more about the responsibilities and rewards of pet ownership.

The Training Shop services:

We opened our Training Shop in November 2010. It is located in the village of Spondon in a precinct of mixed businesses/shops.

The shop has been well received by the local community who have been supportive on many levels, for example, buying second hand goods that are for sale and donating goods to be processed for sale.

There are placements available for adults with learning disabilities who want to learn the skills required to work in a charity shop. Shop Learners can attend for a half or full day. The shop is open for trading Mondays to Saturdays.

This training shop, we believe, is a major success. There is no other service in Derby like it and positive feedback from the general public and our shop customers has been overwhelming!

HOUSE SIX:

In 2021 we secured the purchase of 6 Chapel Side –a 3 bedroomed maisonette over the row of shops where our Training Shop is.

House Six learners have access to five rooms in which to learn a huge variety of independent living skills or to contribute to the training shop (for example; we have an Ebay sales preparation room and a furniture renovation room).

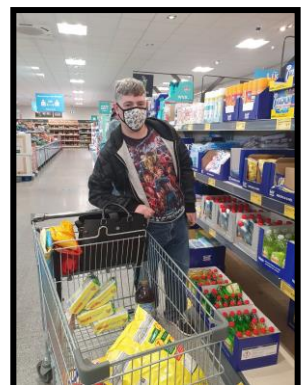
Many of the House Six activities are similar to those listed above under the Watson Rooms section.

Community Support:

We ran supported sessions for Gym attendance and swimming during the week. We have not expanded this during 2021 due to covid risks.

Our Community Presence

- We joined in the Spondon Christmas Lights evening
- We continued to help with the maintenance of the grounds and flowerbeds of St. Augustine's Church and ensured the external areas remained free from litter
- We helped raise £62.83 for the Royal British Legion by selling poppies
- We raised £48.50 for Macmillan Cancer Support



Section 5

Service Manager's Review of 2021 and plans for 2022

The Annual Report and Annual General Meeting are the opportunities we have to look back at the last calendar year and examine our achievements. It is also the time to recognise and record the individuals and organisations that have helped us to achieve our aims. The photographs section of the report show what we achieved in 2021. Section 8 of this document contains a list of thanks to all those who have supported us during 2021. My apologies go to anyone I have forgotten to include.

As always I would like to thank the Management Committee for their support, encouragement, activities and commitment throughout 2021.

Well, 2021 was just as challenging as 2020 but we did some great things and are very proud of all of our achievements.

We secured the purchase of House Six and opened for service delivery in July – this project is really well liked by all of the learners who use it and lots of new skills have been learned.

The displays of our art and craft work at the Activity bases remain amazing. Mel has introduced us to a wide range of creative ideas, many of which we had not tried before.

There has been an amazing variety of activities available at the Centre and as the year progressed we began to leave the base to re-start the shopping group and walking group.

We started to support the catering for St. Augustine's 'Gathering Place' café in the Autumn on a Wednesday. This is proving a fantastic opportunity to collaborate with the Church and local community.

Despite having to be closed for part of the year due to lockdowns the Training Shop has traded very well. All of the shop learners have been enthusiastic in their work and have made progress with learning new tasks.

We kept in place all of our safety changes at all sites throughout 2021. These included keeping apart from each other, air purifying units, keeping windows and doors open, staff covid testing 3 times per week, floor markings, a one-way system, screens placed throughout, provision of PPE and hygiene/sanitising products. We also took everyone's temperature on arrival and mandated the wearing of face shields/masks or other suitable face coverings. Towards the end of 2021 we removed the floor markings and stopped temperature checking.

We worked with everyone to teach them how (and why) to social distance and promoted excellent covid behaviour.

Overall, in all of our services, we had a lot of fun in 2021 and did our best to keep everyone as safe as possible.

In 2022 we want to welcome back the final few people who have stayed at home throughout the whole pandemic.

We hope to increase our community presence in 2022 and highlight the work we do in the communities local to all of our sites.

In respect of the area in Spondon we hope to litter pick round the precinct and possibly the local park as well as watering the flower beds each summer. We will also take part in the annual community events such as Spondon Day and the Christmas Lights event if they take place.

In 2022 we must look again at the issue of the gaps in service provision within Derby City for adults with learning disabilities. We have the willingness, expertise and infrastructure to enable us to support many more individuals – we just need the funding to pay for the costs this will incur.

We will continue to ensure that paperwork, however necessary, does not detract us from our main role as a service provider.

And finally, I am so glad that we have such a sensible and helpful team so that we can give support to our users and their families. Thank you so much for your contributions. You are appreciated and respected highly.

Belinda Hadfield
Service Manager



Service Manager's Review – Statistics

Below I have detailed how long each of the staffing team has been with Alternatives (including time as a volunteer if applicable):

Name	Length of Service at end of 2021
Belinda Hadfield	26 years
Maureen White	24 ½ years
Satia Chohan	21 ¾ years
Natalie Graham	21 years
Jo Evans	11½ (& 10½ years past service)
Samantha Elliott	11¼ years
Britt Hadfield	11¼ years
Jane Morrison	11¼ years (& 6¾ years past service)
Kai Greenwell	10½ years
John Graham	8¼ years
Mel Allen	5 years 3 months
Sam Saccone	4 years and 9 months
Rebecca Gotheridge	4 years and 3 months
Amy Palmer	4 years
Sarah Brookes	2 year and 4 months

I think this table further demonstrates that working at Alternatives is rewarding in many ways.

Here is a list of everyone who has been a paid employee of Alternatives during the last 30 years (not in order) (apologies if I have missed anyone).

Myself	Kate Grailey	Sandy Sanders	Jo Evans
Natalie Graham	Jane Morrison	Maureen White	Satia Chohan
Richard Moylan	Sam Elliott	Britt Hadfield	Kai Greenwell
John Graham	Stef Hahn	Sara Owen	Jane Penny
Hannah Lloyd	George Whittingham	Charlotte Wroe	Carla Bazeley
Julie Shortland	Anne Haxell	David Yale	Abu Nsubuga
Marion Slater	Leila Renshaw	Amanda O'Rourke	Schani Caves
Alex Smith	Karen Gibbons	Debbie Hirst	Sam Cook
Chantelle Bardouille	Val Travers Muir	Gurpreet Johal	Adele Taylor
Chris Buttery	Emma Goldsney	Eileen Egan	Louise Partlow
Lisa Waugh	Suzanne Ashman	Pam Woodman	Mel Allen
Amy Smith	Sam Saccone	Rebecca Gotheridge	Amy Palmer
Caroline Wheway	Sarah Brookes		

and all of our Centre Users who worked for us on Stage 1 of our Employment Scheme.



Section 6

Staff Contribution

The staff contribution to the annual report has fallen to me and in many ways, it'll be similar to previous ones I have written. Alternatives remains a super place to work despite the recent challenges. The wonderful variety of people and tasks ensures that it is never dull and every day provides an adventure!

In the last week alone, my duties have included meetings with social workers, plumbing, sorting donations, writing new policies, making biscuits not to mention karaoke and dancing!

Things have changed so much over the 20+ years I have been with Alternatives, from a small staff team of 4 or 5 to now 3 times that. The services we offer have grown so much too and I am really proud of the progress we have made.

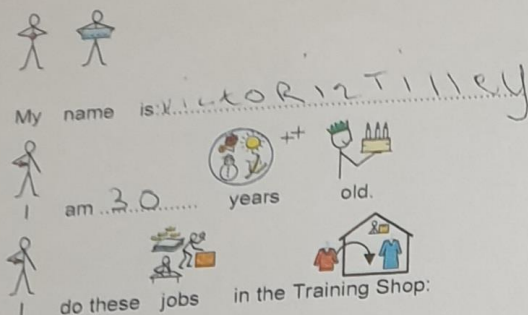
I have benefitted enormously from the flexibility that Alternatives provides to the staffing team and really value having a job that works with my personal/family circumstances. I think the way we adapt to meet the changing needs of the staff is something that sets us apart from other organisations. I enjoy working in a supportive staff team and think we should be proud of the way we look after each other.

But as ever it is the needs of our users that remain our biggest priority and is at the heart of everything we do. The people we support are simply wonderful and make all the difficult days worthwhile. The recent focus has inevitably been on keeping everyone safe but as we look to the future, we have a really exciting time of developing our services ahead!



Section 7

Service User Contribution



1 I put the kids door out for sale.

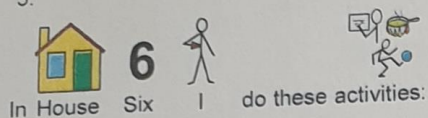
1.

2 I put the shoes out for sale.

2.

3 I put the clothes out for sale.

3.



1 I mop the floors

1.

2 I wash the posters

2.

3 I clean up

3.



I Love all the staff.
my best friends.

Section 8

Our Thanks

FUNDERS, DONORS & SUPPORTERS in 2021.

We would like to extend our thanks to all of the following organisations and individuals for their contributions that were all very appreciated during 2021. Included on this list are some of the individuals who have offered help, advice and support in a variety of ways during the year.

Thanks to:

Awards for All – The National Lottery

The Arnold Clark Foundation

Mr Banga

Betty Messenger Charitable Fund

The Big Lottery Fund – Covid Recovery Fund

Mrs Bucklow

The Charities Aid Foundation

CAF Bank

The Co-Op Charity Community Fund

Jill & Richard Comer

Community Action - Derby

Roger Dale - Unite

Derby City Council – Adults, Health & Housing

Derby Recovery Grant Fund

Foundation Derbyshire

Gez Grimes – money raised in memory of Julie

Government UK – The Coronavirus Job Retention Scheme/Business Support Grants

Heineken UK

Janine Billy and Buster (Pets as Therapy)

Jenny with the garage

Jewellery Lady

St. Augustine's Church

Mark Harrison – Derbyshire Accountancy Services (pensions support)

Mencap – Round the Word Challenge

Mencap – Let's Get Digital

The James family

The Masons - Derbyshire

Margaret Mowles-Derby Community Accountancy Service

Mark Newey-Derby Community Accountancy Service

The Open Gate Trust

Jenny & Gill Orme

The Rank Foundation

The Screwfix Foundation

The Severn Trent Water Community Fund

Small Charities Coalition

The Tuesday Club

The community in Spondon

Everyone who has given goods for our charity shop

And finally, thanks again to the current staff and volunteer team who work so hard to ensure that our excellent service levels are maintained.



Section 9

Annual Accounts for 2021

On the following pages are extracts from Alternatives Activity Centre's accounts for the period 1st January 2021 to 31st December 2021.

The accounts were produced by Derby Community Accountancy Service.

The accounts were signed on behalf of the Treasurer prior to the Annual General Meeting which was held in a smaller format due to the continued covid spreading concerns.



ALTERNATIVES ACTIVITY CENTRE

Balance Sheet as at December 31st 2021

2020 £			2021 £
	Fixed Assets		
0	Land & Buildings	Note 5	99400
	Current Assets		
283018	Bank Balance		312901
6592	Debtors and prepayments	Note 6	8406
<u>2</u>	Cash		<u>48</u>
289612	Total assets		<u>420755</u>
	less liabilities		
4836	Creditors<1 Yr	Note 7	<u>-23378</u>
	Total assets less Current Liabilities		397377
<u>0</u>	Creditors>1 Yr	Note 8	<u>-50936</u>
<u>284776</u>	Net Assets		<u>346441</u>
	Represented by Funds		
10988	Restricted Funds	Note 9	13989
98788	Unrestricted Funds		157452
<u>175000</u>	Designated Fund	Note 4	<u>175000</u>
<u>284776</u>			<u>346441</u>

Alternatives Activity Centre						
Statement of Financial Activity						
For year ended December 31st 2021						
2020			Designated Funds	Unrestricted Funds	Restricted Funds	2021
£			£	£	£	£
	Charitable Income					
81063	Grants	Note 1	0	37122	46792	83914
3185	Donations		0	510	500	1010
56787	Fundraising Income	Note 2	0	66462	0	66462
121233	Sundry Income	Note 3	0	201221	0	201221
215	Interest		0	4	0	4
262483			0	305319	47292	352611
	Charitable Expenditure					
196262	Salaries & Associated Costs		0	192371	24529	216900
32142	Premises, Rates & Insurance		0	30475	11686	42161
9195	Postage, Stationary & Telephone		0	6274	2523	8797
1195	Professional Fees & Subscriptions		0	2450	94	2544
374	Travel		0	1115	0	1115
1894	Equipment & Maintenance		0	2425	3236	5661
5551	Provisions		0	5939	609	6548
146	Sundries		0	350	0	350
1292	PPE		0	318	1314	1632
0	Interest on Loan		0	2278	0	2278
248051			0	243995	43991	287986
2085	Cost of Managing & Administering the Charity		0	2960	0	2960
0	Cost of Generating Funds		0	0	0	0
250136			0	246955	43991	290946
12347	Surplus/(Deficit) for Year		0	58364	3301	61665
272429	Fund Balance at Start of Period		175000	98788	10988	284776
0	Transfer Between Funds		0	300	-300	0
284776	Fund Balance at End of Period		175000	157452	13989	346441

Alternatives Activity Centre						
Notes to the Accounts						
Note 1					2021	2020
Grants received consisted of		Unrestricted	Restricted		Total	Total
		£	£		£	£
Derby City Council Business Support Grant		0	0		0	10000
Derby City Council Discretionary Award		0	0		0	1334
Derby City Council-COVID Support		8335	0		8335	0
Derby City Council- Restart		2667	0		2667	0
HMRC Job Retention Scheme		0	19314		19314	48653
National Lottery		0	10000		10000	5298
Co-operative Community Fund		0	0		0	3358
Severn Trent Water Grant		0	0		0	2000
CAF Grant		25000	0		25000	10000
University of Derby		0	0		0	420
PCC Vulnerability Fund		0	952		952	0
Betty Messenger		0	900		900	0
Mencap Round The World Challenge		0	835		835	0
Screwfix		0	1000		1000	0
D2N2		0	1200		1200	0
Arnold Clark		0	1000		1000	0
Lets Get Digital		0	6479		6479	0
DRGF		0	5112		5112	0
Open Gate		1000	0		1000	0
Rank Foundation		120	0		120	0
		37122	46792		83914	81063
Note 2						
Fundraising						£
Coffee Bar and Centre shop						1991
Spondon Shop and other sales						64471
						66462
Note 3						
Sundry Income						£
Fee income						201221
						201221
Note 4						
£95,000 has been reserved to cover costs in the event of business closure.						
£80,000 has been reserved to cover the future costs for the shop project.						
Note 5						
Fixed Assets				Land & Buildings	Equipment	
				£	£	
Cost as at December 31 2019				0	35375	
Additions				99400	0	
Cost as at December 31 2020				99400	35375	
Depreciation b/fwd				0	35375	
Depreciation this year				0	0	
Total Depreciation				0	35375	
Net Value at December 31 2020				99400	0	

Alternatives Activity Centre						
		Notes to the Accounts				
Note 6						
Debtors and prepayments					£	
Rent paid in advance					8406	
					8406	
Note 7						
Creditors<1 Yr					£	
HM Revenue and Customs					-4903	
Pensions					-865	
CAF Loan					-17610	
					-23378	
Note 8						
Creditors>1 Yr					£	
CAF Loan					-50936	
					-50936	
Note 9						
Restricted Funds						
		Balance B/f	Income	Expenditure	Transfers	Balance C/f
			£	£	£	£
CAF		10000	0	10000	0	0
HMRC Job Retention Scheme		0	19314	19314	0	0
National Lottery COVID 19 Response		988	0	988	0	0
National Lottery		0	10000	6420	0	3580
PCC Vulnerability Fund		0	952	952	0	0
Betty Messenger		0	900	900	0	0
Mencap Round The World Challenge		0	835	653	0	182
Screwfix		0	1000	700	-300	0
D2N2		0	1200	1200	0	0
Arnold Clark		0	1000	1000	0	0
Lets Get Digital		0	6479	94	0	6385
DRGF		0	5112	1270	0	3842
James Family		0	500	500	0	0
		10988	47292	43991	-300	13989