

AMAUDO UK

England & Wales · Charity number 1084963

Details

Other names	AMAUDO UK
Status	Registered
Legal form	Other
Registered	2001-02-09
Register	View on the Charity Commission register

Contact

Address	Forest Hill Methodist Church & Cent Normanton Street London SE23 2DS
Phone	07765151030
Email	amaudouk@amaudo.org
Website	www.amaudo.org

Activities

Objects: THE ADVANCEMENT OF EDUCATION AND THE RELIEF OF POVERTY, SICKNESS AND DISTRESS AND THE PRESERVATION AND PROTECTION OF PUBLIC HEALTH BY THE PROVISION OF GOODS AND MATERIALS AND OPPORTUNITIES FOR MEMBERS OF THE PUBLIC TO UNDERTAKE VOLUNTARY WORK IN PARTICULAR, BUT NOT EXCLUSIVELY, IN AMAUDO, NIGERIA AT THE ABSOLUTE DISCRETION OF THE TRUSTEES.

Activities: Amaudo UK works in partnership to create affordable, accessible and sustainable solutions for people experiencing mental health problems or learning disabilities in Nigeria. Amaudo UK raises awareness, assists volunteers, provides resources such as training, co-manages projects & coordinates UK support.

Classification

- **How:** Makes Grants To Organisations, Provides Human Resources, Provides Advocacy/advice/information, Acts As An Umbrella Or Resource Body, Other Charitable Activities
- **What:** Education/training, The Advancement Of Health Or Saving Of Lives, Disability, The Prevention Or Relief Of Poverty, Human Rights/religious Or Racial Harmony/equality Or Diversity
- **Who:** Children/young People, People With Disabilities, Other Defined Groups

Geography

- **Area of benefit:** IN PARTICULAR, BUT NOT EXCLUSIVELY, IN AMAUDO, NIGERIA
- Nigeria

Finances

Period end	Income	Expenditure	Assets	Employees
2024-12-31	£76,845	£82,489	-	-
2023-12-31	£55,833	£66,310	-	-
2022-12-31	£79,135	£90,528	-	-
2021-12-31	£71,567	£67,209	-	-
2020-12-31	£29,329	£18,464	-	-

Trustees

Name	Role	Appointed
Jennifer Nicola Ayres	Chair	2025-11-08
Abdul Hafiz Balogun		2023-06-03
Ayesha Javed		2015-06-13
Blossom Marire		2023-06-03
DANIEL WORRELL		2016-06-17
ENYINNAYA ANOSIKE		
JOHN ERIC PENNELLS		
Leila Rosalie Curran Reid		2019-10-05
MEAGAN ADRIAANS ACMA		
Sarah Louise Dockree		
Victor Olabanji		2023-10-09

AMAUDO UK

England & Wales - Charity number 1084963

Accounts

BETA Having problems on this page? Your [feedback](#) will help us to improve it.

ⓘ You will be logged out after 30 minutes of inactivity.

[Messages \(/group/guest/notifications\)](#)

[Account \(/group/guest/my-details\)](#)

[Sign out \(/c/portal/logout\)](#)

[Home](#)

[Cancel](#) [Print](#)

Charity Commission Annual Return 2024

AMAUDO UK

Charity registration number: 1084963

Most of the information you give in this form will become publicly available on the Register of Charities. Any field that the Charity Commission will not display will be clearly marked.

This document is a record of the information provided in the Annual Return 2024.

PART A - Charity information

Financial period

Financial period start date

01/01/2024

Financial period end date

31/12/2024

Income and spending

Income £

£ 76,845

Spending £

£ 82,489

Number of contracts from government

How many contracts (other than grant agreements) did your charity receive from central government or a local authority during the financial period for this return?

0

Number of grants from government

How many grants did your charity receive from central government or a local authority during the financial period for this return?

0

Income breakdown

Donations and legacies (excluding Endowments Received)

£ 39,065

Charitable activities

£ 33,336

Other trading activities

£ 0

Investments

£ 0

Other

£ 4,444

Grantmaking**Is grant making the main way your charity carries out its purposes?**

Yes

Recipients of grants**Please round all figures to the nearest pound (do not enter decimal points or commas).****Individuals**

£ 0

Other charities

£ 0

Other organisations that are not charities

£ 51,136

Grant recipients related parties**Are any of the grant recipients related parties to the charity?**

No

Trustee payments**Excluding out of pocket expenses, for what were any of the trustees paid during the financial period for this return?** e. None of the trustees have been paid**Did any of the trustees resign and take up employment with your charity in the financial period of this return?**

No

Income from outside the UK**Did your charity receive income from outside of the United Kingdom in the financial period of this return?**

Yes

Germany

Governments or quasi government bodies outside of the United Kingdom (including European Union)

£ 0

Charities, Non-Government Organisations or Not for Profits outside of the United Kingdom

£ 0

Private Companies outside of the United Kingdom

£ 0

Individual donors resident outside of the United Kingdom

£ 120

Unknown

£ 0

Methods of overseas funding**How was income from outside of the United Kingdom received by your charity in the financial period of this return?****(Tick all that apply)** Businesses authorised to provide 'Payment services'**Delivering activities outside the United Kingdom****Did your charity deliver charitable activities outside of the United Kingdom in the financial period of this return?**

Yes

Select the countries your charity delivered charitable activities outside the United Kingdom

Written agreements with partners outside UK

Does your charity have formal written agreements in place with any partners delivering charitable activities on its behalf outside of the United Kingdom?

Spending outside of the United Kingdom

Did your charity spend funds outside of the United Kingdom in the financial period of this return?

Total Spending outside of the United Kingdom

Trading subsidiaries

Does the charity have any trading subsidiaries?

Charity contact details correct

Is the contact address displayed from the Register of Charities, correct?

Charity headquarters details correct

Is this the same address that you use as your charity's administrative headquarters?

Charity contact address

Address Line 1

Address Line 2

Address Line 3

Address Line 4

Address Line 5

Postcode

Country

Charity Headquarters address

Address Line 1

Address Line 2

Address Line 3

Address Line 4**Address Line 5****Postcode****Country****Property**

Were any of your charity's properties held by holding or custodian trustees on behalf of your charity (excluding the Official Custodian) during the financial period for this return?

Membership type

Is your charity part of a wider group structure with a parent body and subsidiary bodies?

Employment contract types

People were permanently employed by your charity

People were on fixed-terms contracts with your charity

Self-employed people were working for your charity

Total overseas employees

How many of the people above work on behalf of your charity outside of the United Kingdom?

Total employee payroll

What was the total amount spent on employee payroll during the financial period relating to this return?

Employees' salaries

Did any of your charity's employees receive total employment benefits of £60,000 or more in the financial period of this annual return?

Governance policies

Internal charity financial controls policy and procedures

Safeguarding policy and procedures

Financial reserves policy and procedures

Complaints policy and procedures

No

Serious incident reporting policy and procedures

No

Internal risk management policy and procedures

No

Trustee expenses policy and procedures

No

Trustee conflicts of interest policy and procedures

No

Investing charity funds policy and procedures

No

Campaigns and political activity policy and procedures

Not applicable

Bullying and harassment policy and procedures

No

Social media policy and procedures

No

Engaging external speakers at charity events policy and procedures

Not applicable

Safeguarding**Has your charity provided services to children and/or adults at risk in the financial period of the return?**

No

Serious Incidents**Has your charity reported all Serious Incidents (including any historical incidents) that the charity became aware of during the financial period of this return?**

There were no incidents to report

External risk and impact**Donations**

Negative

Other income - grants

Negative

Other income - contracts

Unknown/No Change/Not Applicable

Other income - investment

Unknown/No Change/Not Applicable

Expenditure on charitable activities

Unknown/No Change/Not Applicable

Expenditure on overheads

Unknown/No Change/Not Applicable

Number of volunteers

Unknown/No Change/Not Applicable

Number of employees

Unknown/No Change/Not Applicable

Number of trustees

Unknown/No Change/Not Applicable

Fundraising activities

Unknown/No Change/Not Applicable

Capacity to deliver services

Unknown/No Change/Not Applicable

Total service demand

Positive

Volunteers

Excluding trustees, provide an estimate of the number of volunteers who carried out charitable activities on behalf of your charity in the United Kingdom during the financial period of this return?

0

Privacy statement

Any information you give us will be held securely and processed only in accordance with the rule on data protection. We will not disclose your personal details to anyone unconnected to the Charity Commission unless:

- you have consented to their release; or
- we are legally obliged to disclose them; or
- we regard disclosure as either (a) necessary so that we can properly carry out our statutory functions or (b) necessary in the public interest.

We may share and disclose information about you with relevant public authorities, regulatory bodies and agencies, outside the Charity Commission but only if:

- we can lawfully do so; and
- we decide that disclosure is necessary for national security, crime detection, prevention, and law enforcement, or other issues in the public interest

Information we collect about you**We will use this information:**

To enable us to carry out our statutory functions and duties;

This will include the following actions:

- (a) update, consolidate, and improve the accuracy of our records;
- (b) undertake crime detection and prevention and law enforcement and assist the third parties specified above to investigate or prevent crime and carry out law enforcement;
- (c) data analysis, testing, research, statistical and survey purposes

Information we receive from other sources.**Information we receive from other sources**

We may combine this information with information you give to us and information we collect about you.

We may use this information and the combined information for the purposes set out above (depending on the types of information we receive).

We will ensure that any such disclosure and use is proportionate; considers your right to respect for your private life; and is done fairly and lawfully in accordance with the data protection principles of the Data Protection Act.

The Data Protection Act 1998 regulates the use of 'personal data', which is essentially any information, however stored, about identifiable living individuals.

As a 'data controller' under the Act, the Charity Commission must comply with it. Any changes we may make to our privacy statement in the future will be set out in the replacement version of this form.

Please check back frequently to see any updates or changes to our privacy policy.

Declaration

This annual return has not been submitted and no Declaration has been made

AMAUDO UK

(Charities Number 1084963)

ACCOUNTS FOR THE YEAR ENDED 31 DECEMBER 2024

AMAUDO UK

STATEMENT OF FINANCIAL ACTIVITIES FOR THE YEAR ENDED 31 DECEMBER 2024

Notes	2024 General £	2024 Restrict £	2024 Total £	2023 General £	2023 Restrict £	2023 Total £
INCOME						
Regular Donors	10,723	5,628	16,351	9,914	5,763	15,677
Donations	3,775	8,161	11,936	5,438	17,385	22,823
	14,498	13,789	28,287	15,352	23,148	38,500
Grants	9,000	35,060	44,060	12,000		12,000
Gift Aid	4,384		4,384	5,247		5,247
Bank Interest	114		114	87		87
Total Income	27,996	48,849	76,845	32,685	23,148	55,833
EXPENDITURE						
Transfers to Nigeria		50,514	50,514		27,479	27,479
Nigeria expenses						
UK Expenditure						
Office rent and costs	900		900	783		783
Rent	900					
Stationery/telephone	-					
Salaries and costs	18,278		18,278	19,813		19,813
Salaries	15,487					
Pension and N. I.	2,792					
Software	61		61	412		412
Fundraising	131		131	252		252
Insurance	151		151	262		262
Employees travel	2,702		2,702	20		20
Local	-					
Overseas	2,702					
Sundry expenses	440		440	591		591
Trustees travel	-		-	66		66
Local	-					
Overseas	-					
Training	-		-	-		-
Donation	-		-	1,520		1,520
Volunteer expenses	-		-	-		-
Welfare officer training	-		-	-		-
balance of costs	-		-	-		-
Contribution for Amaudo HQ	9,311		9,311	15,111		15,111
Depreciation	-		-	-		-
Total Expenditure	31,975	50,514	82,489	38,831	27,479	66,310
Net Income less Expenditure	(3,980)	(1,665)	(5,645)	(6,146)	(4,331)	(10,476)
Balance at beginning of the year	17,542	1,998	19,540	23,687	6,329	30,016
Balance at end of the year	13,562	333	13,895	17,542	1,998	19,540

AMAUDO UK

BALANCE SHEET AS AT 31 DECEMBER 2024

	Notes	2024	2023
		£	£
ASSETS			
Fixed Assets	3	-	-
Current Assets			
Debtors	4	7,758	8,818
Inventory	5	-	-
Cash at Bank		6,485	11,067
Total Current Assets		<u>14,243</u>	<u>19,886</u>
less Current Liabilities			
Creditors	6	348	346
Net Current Assets		<u>13,895</u>	<u>19,540</u>
Total Assets less Liabilities		<u>13,895</u>	<u>19,540</u>
FUNDS			
Restricted	7	333	1,998
less Unrestricted		13,562	17,542
		<u>13,895</u>	<u>19,540</u>

Signed on behalf of the Trustees of Amaudo

Chairman
Finance Committee



Treasurer

AMAUDO UK

NOTES TO THE ACCOUNTS FOR THE YEAR ENDED 31 DECEMBER 2024

1 Accounting Policies

a Basis of Accounting

These accounts are prepared on the historical cost basis and in accordance with applicable recognised accounting standards and the statement of Recommended Practice on Accounting by Charities (the Charities SORP).

b Grants

Grants are recognised in the Statement of Financial Activities on an accruals basis in accordance with any pre-conditions.

c Donations, Fundraising and Gifts

Donations are recognised in the accounts on a received basis. Gifts in kind are recognised at their value to the charity (none were received in 2023).

No value is assigned to donated facilities.

d Expenditure

Expenditure is recognised on an accrual basis, with overheads being allocated to restricted and unrestricted overheads in proportion to donations and grants received.

e Capitalisation

Expenditure on repairs, renewals, plant and equipment which costs in excess of £200 is capitalised together with expenditure on Furniture and fitting and donated goods.

f Depreciation

Provision for depreciation of Fixed Assets held for use by the charity is made at annual rates calculated to spread the cost of each asset over its expected useful life.

The depreciation rate in use for this year is as follows:

Office equipment	33%
------------------	-----

g Taxation

No provision for taxation is included in these accounts as the charity is entitled to exemption from tax afforded by section 505 of the Income and Corporation Act 1988.

h Cash Flow

The charity qualifies as a small charity and therefore, in accordance with FRS 1, no cash flow is required.

AMAUDO UK

NOTES TO THE ACCOUNTS FOR THE YEAR ENDED 31 DECEMBER 2024

2 Employees

During the year the charity employed one person, on a part time basis.

3 Fixed Assets

Office Furniture and Equipment

Cost	
Balance at 31 December 2023	1,023
Scrapped during the year	-
	<hr/>
Additions during the year	
Furniture	-
Office Equipment	-
	<hr/>
Balance 31 December 2024	1,023
	<hr/>
Accumulated Depreciation	
Balance at 31 December 2023	1,023
Utilised	-
	<hr/>
Charge for the year	-
	<hr/>
Balance 31 December 2024	1,023
	<hr/>
Net Book Value at 31 December 2023	-
Net Book Value at 31 December 2024	-

4 Debtors

	2024	2023
	£	£
Transfers made in advance to Amaudo Itambauzo	3,510	4,038
Gift Aid receivable	4,194	4,254
Office rental - deposit	-	450
Insurance - prepaid	54	53
Credit card annual fee part-refund	-	24
	<hr/>	<hr/>
	7,758	8,818

5 Inventory

	2024	2023
	£	£
Learner packs	-	-

6 Creditors

	2024	2023
	£	£
Accruals	348	346
	<hr/>	<hr/>
	348	346

AMAUDO UK

NOTES TO THE ACCOUNTS FOR THE YEAR ENDED 31 DECEMBER 2024

7 Restricted Funds

The funds of the charity include restricted funds comprising the unexpended balances of donations and grants held on trust to be applied for specific purposes

	Balance 1 Jan	Movement in Funds		Balance 31 Dec	
		Incoming	Outgoing	Transfers	
Amaudo Itambauzo Headquarters	1,776	9,061	10,694	-	143
Amaudo 2 Ntalakwu	(2,036)	2,920	1,860	-	(976)
Project Comfort	396	1,860	2,460	-	(204)
Project Director's vehicle fund	-	32,500	32,500	-	-
Amaudo 1	511	-	300	-	211
Education Fund	1,351	2,508	2,700	-	1,159
	<hr/>	<hr/>	<hr/>	<hr/>	<hr/>
	1,998	48,849	50,514	-	333



Section A

Independent Examiner's Report

Report to the trustees

Charity Name
Amaudo UK

**On accounts for the year
ended**

31 December 2024

**Charity no
(if any)**

1084663

Set out on pages

(remember to include the page numbers of additional sheets)

I report to the trustees on my examination of the accounts of the above charity ("the Trust") for the year ended **31 / 12 / 2024**.

**Responsibilities and
basis of report**

As the charity's trustees, you are responsible for the preparation of the accounts in accordance with the requirements of the Charities Act 2011 ("the Act").

I report in respect of my examination of the Trust's accounts carried out under section 145 of the 2011 Act and in carrying out my examination, I have followed all the applicable Directions given by the Charity Commission under section 145(5)(b) of the Act.

**Independent
examiner's statement**

I have completed my examination. I confirm that no material matters have come to my attention in connection with the examination which gives me cause to believe that in, any material respect:

- the accounting records were not kept in accordance with section 130 of the Charities Act; or
- the accounts did not accord with the accounting records; or
- the accounts did not comply with the applicable requirements concerning the form and content of accounts set out in the Charities (Accounts and Reports) Regulations 2008 other than any requirement that the accounts give a 'true and fair' view which is not a matter considered as part of an independent examination.

I have no concerns and have come across no other matters in connection with the examination to which attention should be drawn in this report in order to enable a proper understanding of the accounts to be reached.

** Please delete the words in the brackets if they do not apply.*

Signed:

SSmith

Date:

07.09.2025

Name:

Samantha Smith

**Relevant professional
qualification(s) or body
(if any):**

ACMA CGMA

Address:

31 Birchwood Road, West Byfleet, KT14 6DW

Only complete if the examiner needs to highlight material matters of concern (see CC32, Independent examination of charity accounts: directions and guidance for examiners).

Give here brief details of any items that the examiner wishes to disclose.

AMAUDO UK

England & Wales - Charity number 1084963

Accounts

AMAUDO

Making an impact in mental health



Annual Report
2023

Our Mission & Aims

Amaudo UK works in partnership to create affordable, accessible and sustainable solutions for people with mental health needs in Nigeria.



1 IMPROVE KNOWLEDGE

We aim to improve the mental health skills and knowledge of the Amaudo worker team and other health workers. We will also support training initiatives in local communities and with leaders and decision makers.

2 STRENGTHEN INFRASTRUCTURE

We aim to strengthen Amaudo's infrastructure by funding improvements and developments to current facilities at Amaudo 1 and 2. We will also provide funding for new equipment and resources.

3 RAISE AWARENESS

We aim to reduce the stigmatisation experienced by people with mental health needs and ensure their human rights are upheld. We will do this by raising awareness of mental health issues across the communities in which Amaudo works

4 INCREASE CAPACITY

We aim to increase the capacity of Amaudo Itumbauzo by accessing and utilising funding, expertise and resources in the UK. We will also support local fundraising, collaborations and networking in Nigeria.

Sarah Dockree

Chair of Amaudo UK

As always, as I review the activities of the past year, I find myself reflecting on the incredible journey that Amaudo has been on over the last 35 years, the constant evolving and developing of all it offers to meet challenges in new and innovative ways. And of course, how many individuals have been and are part of that journey - we couldn't do it without you.

2023 ended with the fantastic news that, thanks to a generous donation from Let Yourself Trust, we had at last raised enough for Amaudo to purchase a new vehicle - what a gift it will be to finally see it in action, serving the needs of all Amaudo does and achieves. What a journey it's been to raise that money - something that wouldn't have been possible without numerous supporters and awareness raising, thank you. And what journeys it will go on once it is in operation - journeys that will bring hope and healing to hundreds and thousands of individuals over the coming months and years, journeys that will raise awareness of mental health across south east Nigeria, challenge the perspectives of relatives, professionals and students, journeys that will convey workers for training, therapy, clinics and more.

I hope you will continue to journey with us and with Amaudo as we continue to change the lives of those suffering from mental ill health in SE Nigeria.



Ihedinma's Story

In October 2023, the Amaudo team went to Umuahia to collect a number of homeless, mentally ill people living on the streets of the town.

"As we approached the motor park we saw an unkept woman wandering around wearing multiple items of clothing. We parked up and gently approached her and asking her if should would come with us. She agreed and entered our vehicle. As we prepared to drive away the people around the park shouted "Amaudo take her and go". They were familiar with her roaming the area but no-one knew how to help her other than to give her some food.

Inside the vehicle she was calm. Muttering occasionally to herself and laughing unexpectedly every so often as we drove the bumpy roads back to Amaudo 1. Once we got to the Centre, house parents helped her to get clean and discovered that she was wearing seven cloths at once! We assigned her a room, provided basic provisions for her and found her a hearty meal which she wolfed down.

We thought she might be a difficult case as she had obviously had a troubled time on the streets and her mental health was very poor. We anticipated that she would need to stay many months to become stable but to our amazement, after one month, she was able to tell us her name and her place of origin which enabled us to start our family tracing process. In fact, in the second month, during the Sunday service where we were celebrating those about to be discharged she stood up and said "I am also well and I will join those who will be discharged!" We said "okay" but we took it as the usual request of "I want to go home" by residents. However, during our next ward round and the following weeks all reports from everyone involved in her care confirmed that she has become well and stable and would be able to go home.

On December 2, 2023, just two months on from being picked form the streets, Ihedinma's family travelled to Amaudo where they all reunited for the discharge service. They participated in the training event for family members and were able to take her home. With support from her sister, she visited the mental health clinic in Umuahia where she will now go every month for support and medication.

It was a quick recovery indeed and encourages us to leave no one behind!"

Amaudo 1

Amaudo 1 provides a residential, therapeutic community for people who are homeless and mentally ill. Rehabilitation takes place whilst residents and staff live, work, eat and socialise together. Rehabilitation involves counselling, medication, occupational therapy and family tracing. After a period of time staying at Amaudo, most residents are reunited with their families and resettled back to their communities.

During 2023 a total of 35 residents lived at Amaudo 1. By December 18 residents were well enough to be discharged home to their families. During their stay at Amaudo residents learnt skills such as tailoring, hairdressing, bead making, trading, and farming to enable them to earn a livelihood and support themselves when they are discharged.

Amaudo UK support in 2023

Our biggest project during 2023 was to increase the water capacity at Amaudo 1. The water needs of the community grew dramatically due to the construction of the Student Nurses Hostel which hosts up to 70 students at a time. The Centre also houses up to 100 residents and staff, as well as hosting visitors who come and learn about Amaudo's work. Amaudo also provides clean drinking water to the local village.

This project increased the water storage capacity from 2000 to 6000 gallons of water which enables Amaudo to store and distribute water to 350 people for four days. This reduces the pumping costs and secures a good, clean reliable source of water for everyone at Amaudo.

“At Amaudo I felt safe for the first time in months. The peaceful setting and the encouraging staff enabled me to get well.” (Stella)



Increase the water capacity



Amaudo 2

Amaudo 2 is a small, long stay community village. It has a family house for people with learning difficulties and smaller homes where people who are unable to be reunited with their families live. In 2023, 25 residents lived at Amaudo 2 with a team of staff to support them.

Living in our exciting Amaudo 2 community village are Charity and Katty. They are the oldest residents at the Centre with both of them being over 70 years old. I am always amazed at how lively and active they still are, participating in many of the daily chores around the compound and engaging in community activities. They certainly ignite the life at Amaudo 2.



Both have made remarkable recoveries from mental illness and a hard life on the streets before they came to Amaudo almost 30 years ago. Amaudo has helped them to live their lives happily despite the challenges they have faced and we value them dearly as part of the Amaudo family. (Rev Kenneth)



Annual Grant



Training

Over many years Amaudo has often noted that the media frequently contributes to the stigmatisation of individuals with mental illnesses in society and perpetuates unhelpful stereotypes and harmful myths. Consequently, they decided to run a mental health training day for media professionals in Southeast Nigeria.

The training session was themed “Changing the narratives in mental health in Nigeria – the role of the media,” and was held at the Amaudo 1 Centre. Mental Health professionals delivered seminars and Rev Kenneth took participants on a tour of Amaudo and explained the work of the organisation.

Over 30 media professionals from TV, radio and print attended the event. For 80% of the participants, it was their first seminar on mental health. Additionally, 95% of participants admitted to using language in their reports that promotes stigma, unaware of its impact on individuals with mental health issues.

At the seminar's conclusion, participants issued a communiqué to advocate for mental health awareness and services through their reporting. Following the training, the media have increased their promotion of mental health issues. The event has fostered a stronger collaboration between the media and Amaudo.



**Training for 70
members of the Media**



Training

For many years Amaudo has hosted students as part of their general nursing course, providing training in mental health skills and giving student nurses the opportunity to observe Amaudo's projects. In 2023 Amaudo provided training for 715 student nurses.

With such large numbers of students it has been a challenge to accommodate them all at Amaudo and students have often had to sleep on the floor. It was therefore such a boost to finally secure funding from the Bloom Foundation to build a hostel to house students and other groups who come and visit Amaudo to learn about the work.

The hostel was finally completed at the beginning of the year. *"On Saturday 29th, April 2023 Amaudo was in a joyful mood as we marked the completion and dedication of the Dr Ureh Lekwauwa Student's hostel built and equipped by Dr. Ureh Lekwauwa and the Bloom Health Foundation. The dedication service was officiated by Rt. Rev Dr James Alozie Anyanwu and attended by the community and officials from the government church."*

The 48 bed hostel is powered by solar panels. In addition to the dormitories it has spaces for students to study with desks, chairs and bookshelves also funded by the Bloom Foundation. In addition to the nurses, Amaudo is planning to use the hostel for other groups who visit Amaudo to learn about mental health issues.



Amaudo's Director, Very Rev Kenneth, completed his online PGDip in Public Mental Health with Cape Town University.

Awareness Raising

The radio show is a weekly live phone in programme every Monday at 11.30 am to 12pm by the Broadcasting Corporation of Abia State (BCA) . Each week a mental health topic is discussed by professionals and relevant stakeholders to create awareness on mental health and promote the work of Amaudo. During the programme the public are invited to call in to contribute or ask questions.

The programme covers the Southeast States including Abia, Imo, Enugu, Ebonyi, Anambra and South-South states like Akwa Ibo, Rivers, Bayelsa, Delta, Edo, and Cross River States. Together these states have a population of over 50 million people.

Since the radio show began there has been an increase in people talking about mental health issues and more people are confident to discuss their mental health live on air. After each show there is an increase in people contacting Amaudo to ask for help and support.



**LISTEN TO OUR RADIO SHOW every Monday
@Broadcasting Corporation of Abia State (BCA) 88.10 FM**



**Amaudo's weekly radio show
about mental health issues is
broadcast across 11 States
every Monday.**



Helping Hands School

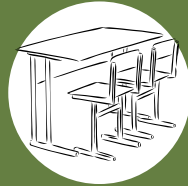
The Helping Hands School has continued to provide basic nursery and primary education to children in Amaudo's host community, Mbukwa and from the surrounding communities of Itumbauzo. The school aims to provide basic education to these children as a platform for them to go on to further education or learn formal skills.

The cost of basic education is free for families as it has been highly subsidised through funding support by Amaudo UK. In 2023 60 children enrolled for studies. 12 children graduated from the Primary section and are ready to proceed to secondary education. Amaudo has started to add secondary provision to the school in response to requests from local parents. This will help to build on the successes and provide school from early childhood right through to adolescence.

During 2023 a number of maintenance repairs were carried out in the school including to the borehole and toilets to ensure that sanitation and clean water is available for all staff and students. The classrooms were refreshed with a coat of paint and new desks were purchased to improve the learning environment for the children.



Teacher's Salaries paid for the year



50 new desks



Borehole and toilet repairs



"If not for Amaudo, my child would not have been able to go to school because I cannot afford to pay school fees"

Community Projects

Community Mental Health Programme

Amaudo's Community Mental Health Programme (CMHP) is actively providing community mental health care services for 5000 people who are mentally ill in the communities in Abia, Ebonyi, Anambra and Imo State. The Programme is a pioneering collaboration between Amaudo and State Governments and other local stakeholders. Nurse-led clinics provide accessible and affordable care to people in their own communities and also support residents who have been discharged from Amaudo's residential centre.

The Programme continues to experience setbacks in Ebonyi and Anambra States who have struggled to replace retired psychiatric nurses. It is hoped that the training of general nurses in mental health skills at Amaudo will encourage a new generation of staff. The programme also struggles in some areas due to lack of State Government commitment.

In 2024-25 Amaudo aims to create 3 strategic hub clinics in Umuahia, Aba and Ohafia which will each support their surrounding clinics. Each hub will have at least one Community Psychiatric Nurse and a Social worker and will be able to call on the services of a psychologist and psychiatrist who will work across the three hubs. The clinics will be promoted through community awareness and the radio show and will be integrated into training activities.



Project Comfort

During 2023 Project Comfort has continued to provide community-based rehabilitation for 63 children with physical and learning disabilities in 26 villages in communities in Ohafia Local Government Area in Abia State. The area is divided into two zones for easy coverage by fieldworkers and supervisors.

8 fieldworkers worked with children and their families providing therapeutic interventions, information and training. They also carried out awareness raising activities on child health topics and disability. Some children were supported by project Comfort to register for school. There is an active Parent Support Group which assisted by the local traditional ruler and Women's Group.



Fundraising in Nigeria

During 2023 we worked closely with Amaudo Nigeria to design a fundraising strategy and materials to use to raise money within Nigeria. We wrote, designed and printed a brochure and letter to send out to high net worth individuals in Abia state and further afield. We plan to continue this work in 2024 with a visit to Lagos to meet potential funders.



AMAUDO
Integrated Community Mental Health Foundation



WWW.AMAUDO.ORG



**Project Comfort
running costs**



"We are exploring opportunities in Ohafia to touch more children with disabilities through project Comfort's community work."

Finances

	2023			2022		
	GENERAL	RESTRICTED	TOTAL	GENERAL	RESTRICTED	TOTAL
OPENING BALANCE	£23,687	£6,329	£30,016	£35,460	£5,950	£41,410
INCOME	£32,685	£23,148	£55,833	£44,369	£34,766	£79,135
EXPENDITURE	£38,831	£27,479	£66,310	£56,141	£34,387	£90,528
FINAL BALANCE	£17,542	£1,998	£19,540	£23,687	£6,329	£30,016

In addition to the ongoing generosity of those who regularly contribute by standing order which provides a solid support for the work of Amaudo, generous grants have been received from the Souter Trust, the Good News Trust, the Christadelphian Samaritan Fund and Wealdstone Methodist Church. This level of income has enabled AmaudoUK to contribute significantly to the ongoing work at a time when inflation is a major factor in Nigeria. Grant seeking and fundraising are still challenging tasks but efforts continue. The ongoing support is greatly appreciated and provides continuing encouragement.

John Pennells
Chair, Finance Committee

Reserves Policy
www.amaudo.org/documents

GRANT HIGHLIGHTS

RADIO AWARENESS
£5375

AMAUDO 1
WATER PROJECT
£ 4710

MEDIA TRAINING EVENT
£3482

PROJECT COMFORT
£2460

HELPING HANDS SCHOOL
£4660

DIRECTOR TRAINING
£1432

Very Rev Kenneth Nwaubani

Director of Amaudo Nigeria

At the end of last year I reflected on the difficulties we passed through in 2022 due to economic challenges and insecurity in Nigeria, worsened by the Covid Pandemic. I felt that we had overcome the Covid and the new Nigerian Government which was inaugurated in May 2023 would implement policies that would reduce the socioeconomic and security challenges in Nigeria such as poverty, high unemployment, high inflation, kidnapping, terrorist attack and banditry. Unfortunately, our expectations were false because the cost of food, fuel, diesel, and other services increased by over 400%. Fuel, which used to be 260 Naira per litre, is now sold at 700 per litre.

It has been so difficult to provide charity in such a difficult environment and I have been disgusted but for the support from Amaudo UK which is dependable and consistent. Amaudo UK helped and strongly supported Amaudo Nigeria and helped us survive and succeed in our rehabilitation work and infrastructural development. The support from Kate and the entire Amaudo UK Trustees has made me strong.

I have also become stronger after reading a letter that Sister Rosalind Colwill wrote to her sister, Jen, in 1993 on her experience with the difficult situation in Nigeria. Her letter stated thus *"We are experiencing the worst inflation I've ever seen now. Garri, our staple food is now N100 for 1 cup - it used to be 26 cups for N100. We have had a fuel scarcity for the last 6 weeks. For a couple of weeks, vehicles were parked everywhere and abandoned. No fuel anywhere. You sat in queues for a whole day to get a couple of gallons. It has eased now but it is not yet back to normal. The exchange rate for the Naira is now N32 to 1. In 1986 it was N1 to 1"*.

So after 30 years we are still crying over the same difficult situation. The lesson for me is to keep pushing Amaudo through these times, despite the difficulties, rather than waiting for a time when everything is better. Regardless of the constant challenges Nigeria throws at us Amaudo has managed to survive, thrive and grow and we continue to march onwards .



THANK YOU

**As a small charity with big ambitions,
your donations have a huge impact.**

**Amaudo is truly grateful for every
penny you have so generously given
during 2023**



Amaudo UK Team

TRUSTEES

Sarah Dockree (Chair)

Dan Worrell (Vice-Chair)

Meagan Adriaans (Treasurer)

John Pennells (Secretary)

Enyi Anosike

Peter Dockree

Liuna Fekravar

Ayesha Murtaza

Leila Reid

AMAUDO UK STAFF

Kate Lumley (CEO)

PATRON

Jackie Kay MBE FRSE

INDEPENDENT EXAMINER

Tunde Adesuyan





CONTACT US

**Amaudo UK, Forest Hill Methodist Church & Centre,
Normanton Street, London SE23 2DS**

07765151030 amaudouk@amaudo.org www.amaudo.org

Registered Charity Number: 1084963

AMAUDO UK

(Charities Number 1084963)

ACCOUNTS FOR THE YEAR ENDED 31 DECEMBER 2023

AMAUDO UK

STATEMENT OF FINANCIAL ACTIVITIES FOR THE YEAR ENDED 31 DECEMBER 2023

	Notes	2023 General £	2023 Restrict £	2023 Total £	2022 General £	2022 Restrict £	2022 Total £
INCOME							
Regular Donors		9,914	5,763	15,677	10,277	5,988	16,265
Donations	8	5,438	17,385	22,823	15,280	28,778	44,057
		15,352	23,148	38,500	25,557	34,766	60,322
Grants	8	12,000		12,000	13,000		13,000
Gift Aid		5,247		5,247	5,803		5,803
Bank Interest		87		87	9		9
Total Income		32,685	23,148	55,833	44,369	34,766	79,135
EXPENDITURE							
Transfers to Nigeria			27,479	27,479		34,387	34,387
Nigeria expenses							
UK Expenditure							
Office rent and costs		783		783	2,568		2,568
Rent	750						
Stationery/telephone	33						
Salaries and costs		19,813		19,813	21,676		21,676
Salaries	16,783						
Pension and N. I.	3,031						
Software		412		412	380		380
Fundraising		252		252	2,276		2,276
Insurance		262		262	427		427
Employees travel		20		20	13		13
Local	20						
Overseas	-						
Sundry expenses		591		591	576		576
Trustees travel		66		66	-		-
Local	66						
Overseas	-						
Training		-		-	-		-
Donation		1,520		1,520	1,914		1,914
Contribution for Amaudo HQ		15,111		15,111	26,311		26,311
Depreciation		-		-	-		-
Total Expenditure		38,831	27,479	66,310	56,141	34,387	90,528
Net Income less Expenditure		(6,146)	(4,331)	(10,476)	(11,772)	379	(11,393)
Balance at beginning of the year		23,687	6,329	30,016	35,460	5,950	41,410
Balance at end of the year		17,542	1,998	19,540	23,687	6,329	30,016

AMAUDO UK

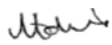
BALANCE SHEET AS AT 31 DECEMBER 2023

	Notes	2023	2022
		£	£
ASSETS			
Fixed Assets	3	-	-
Current Assets			
Debtors	4	8,818	10,214
Inventory	5	-	-
Cash at Bank		11,067	21,057
Total Current Assets		<u>19,886</u>	<u>31,271</u>
less Current Liabilities			
Creditors	6	346	1,255
Net Current Assets		<u>19,540</u>	<u>30,016</u>
Total Assets less Liabilities		<u>19,540</u>	<u>30,016</u>
FUNDS			
Restricted	7	1,998	6,329
less Unrestricted		17,542	23,687
		<u>19,540</u>	<u>30,016</u>

Signed on behalf of the Trustees of Amaudo



Chairman



Treasurer

AMAUDO UK

NOTES TO THE ACCOUNTS FOR THE YEAR ENDED 31 DECEMBER 2023

1 Accounting Policies

a Basis of Accounting

These accounts are prepared on the historical cost basis and in accordance with applicable recognised accounting standards and the statement of Recommended Practice on Accounting by Charities (the Charities SORP).

b Grants

Grants are recognised in the Statement of Financial Activities on an accruals basis in accordance with any pre-conditions.

c Donations, Fundraising and Gifts

Donations are recognised in the accounts on a received basis. Gifts in kind are recognised at their value to the charity (none were received in 2023). No value is assigned to donated facilities.

d Expenditure

Expenditure is recognised on an accrual basis, with overheads being allocated to restricted and unrestricted overheads in proportion to donations and grants received.

e Capitalisation

Expenditure on repairs, renewals, plant and equipment which costs in excess of £200 is capitalised together with expenditure on Furniture and fitting and donated goods.

f Depreciation

Provision for depreciation of Fixed Assets held for use by the charity is made at annual rates calculated to spread the cost of each asset over its expected useful life.

The depreciation rate in use for this year is as follows:

Office equipment	33%
------------------	-----

g Taxation

No provision for taxation is included in these accounts as the charity is entitled to exemption from tax afforded by section 505 of the Income and Corporation Act 1988.

h Cash Flow

The charity qualifies as a small charity and therefore, in accordance with FRS 1, no cash flow is required.

AMAUDO UK

NOTES TO THE ACCOUNTS FOR THE YEAR ENDED 31 DECEMBER 2023

2 Employees

During the year the charity employed two people, each on a part time basis.

3 Fixed Assets

Office Furniture and Equipment

Cost		
Balance at 31 December 2022		1,023
Scrapped during the year		-
		<hr/>
Additions during the year		
Furniture		-
Office Equipment		-
		<hr/>
Balance 31 December 2023		1,023
		<hr/>
Accumulated Depreciation		
Balance at 31 December 2022		1,023
Utilised		-
		<hr/>
Charge for the year		-
		<hr/>
Balance 31 December 2023		1,023
		<hr/>
Net Book Value at 31 December 2022		-
Net Book Value at 31 December 2023		-

4 Debtors

	2023	2022
	£	£
Transfers made in advance to Amaudo Itambauzo	4,038	4,038
Gift Aid receivable	4,254	5,560
Office rental - deposit	450	450
Insurance - prepaid	53	165
Credit card annual fee part-refund	24	-
	<hr/>	<hr/>
	8,818	10,214

5 Inventory

	2023	2022
	£	£
Learner packs	-	-

6 Creditors

	2023	2022
	£	£
Accruals	346	1,255
	<hr/>	<hr/>
	346	1,255

AMAUDO UK

NOTES TO THE ACCOUNTS FOR THE YEAR ENDED 31 DECEMBER 2023

7 Restricted Funds

The funds of the charity include restricted funds comprising the unexpended balances of donations and grants held on trust to be applied for specific purposes

	Balance 1 Jan	Movement in Funds		Transfers	Balance 31 Dec
		Incoming	Outgoing		
Amaudo Itambauzo Headquarters	1,872	16,071	16,167	-	1,776
Amaudo 2 Ntalakwu	(1,736)	1,560	1,860	-	(2,036)
Project Comfort	921	1,935	2,460	-	396
Project Director's vehicle fund	1,267	1,074	2,341	-	-
Amaudo 1	511	-	-	-	511
Education Fund	3,494	2,508	4,651	-	1,351
	6,329	23,148	27,479	-	1,998

8 Reclassification of Income

In 2022, £13,000 worth of Grants were incorrectly classified as Donations. This has now been corrected retrospectively. Net impact of this reclassification on Total General Funds Income is £0.



Section A

Independent Examiner's Report

Report to the trustees

Charity Name
Amaudo UK

**On accounts for the year
ended**

31 December 2023

**Charity no
(if any)**

1084663

Set out on pages

(remember to include the page numbers of additional sheets)

I report to the trustees on my examination of the accounts of the above charity ("the Trust") for the year ended **31 / 12 / 2022**.

**Responsibilities and
basis of report**

As the charity's trustees, you are responsible for the preparation of the accounts in accordance with the requirements of the Charities Act 2011 ("the Act").

I report in respect of my examination of the Trust's accounts carried out under section 145 of the 2011 Act and in carrying out my examination, I have followed all the applicable Directions given by the Charity Commission under section 145(5)(b) of the Act.

**Independent
examiner's statement**

I have completed my examination. I confirm that no material matters have come to my attention in connection with the examination which gives me cause to believe that in, any material respect:

- the accounting records were not kept in accordance with section 130 of the Charities Act; or
- the accounts did not accord with the accounting records; or
- the accounts did not comply with the applicable requirements concerning the form and content of accounts set out in the Charities (Accounts and Reports) Regulations 2008 other than any requirement that the accounts give a 'true and fair' view which is not a matter considered as part of an independent examination.

I have no concerns and have come across no other matters in connection with the examination to which attention should be drawn in this report in order to enable a proper understanding of the accounts to be reached.

** Please delete the words in the brackets if they do not apply.*

Signed:

SSmith

Date:

01.08.2023

Name:

Samantha Smith

**Relevant professional
qualification(s) or body
(if any):**

ACMA CGMA

Address:

31 Birchwood Road, West Byfleet, KT14 6DW

Section B

Disclosure

Only complete if the examiner needs to highlight material matters of concern (see CC32, Independent examination of charity accounts: directions and guidance for examiners).

Give here brief details of any items that the examiner wishes to disclose.

AMAUDO UK

England & Wales - Charity number 1084963

Accounts



2022

AMAUDO

MAKING AN IMPACT
IN MENTAL HEALTH

Annual Report

Amaudo UK
Normanton Street
London SE23 2ER

www.amaudo.org

Our Mission & Aims



Amaudo UK works in partnership to create affordable, accessible and sustainable solutions for people with mental health needs in Nigeria.

1 IMPROVE KNOWLEDGE

We aim to improve the mental health skills and knowledge of the Amaudo worker team and other health workers. We will also support training initiatives in local communities and with leaders and decision makers.

2 STRENGTHEN INFRASTRUCTURE

We aim to strengthen Amaudo's infrastructure by funding improvements and developments to current facilities at Amaudo 1 and 2. We will also provide funding for new equipment and resources.

3 RAISE AWARENESS

We aim to reduce the stigmatisation experienced by people with mental health needs and ensure their human rights are upheld. We will do this by raising awareness of mental health issues across the communities in which Amaudo works

4 INCREASE CAPACITY

We aim to increase the capacity of Amaudo Itumbauzo by accessing and utilising funding, expertise and resources in the UK. We will also support local fundraising, collaborations and networking in Nigeria.

Sarah Dockree

Chair of Amaudo UK

Amaudo has a long history of reaching those who many would say were unreachable – of transforming the lives of individuals affected by mental illness, giving families hope who thought they'd lost their loved one forever, bringing children with disabilities who were being hidden into full view and giving them a better quality of life. Over the years it has persevered – through so many challenges and obstacles, never giving up on reaching those on the edge of society. As I read this report and consider the impact Amaudo is currently having, I am amazed at where its expertise, its transforming care and its consistent campaigning and advocacy is reaching. The radio show broadcast each week reaches millions of people, listening from far and wide; the community awareness programmes reach hundreds of villagers each time. Training for journalists and others mean that they not only hear the message of Amaudo but are equipped and empowered to pass it on through their professions – the transformative work of Amaudo no longer knows any bounds.

Today, Amaudo is not limited to those who live nearby or happen upon its residential centres, it is not limited to those who have found themselves destitute – instead it reaches into many thousands of lives, through its clinics, its centres, its programmes and the training of so many. All of this is made possible, of course, by the generosity of so many individuals, grant makers and funders, to all of whom we are very grateful. Whether you have recently discovered Amaudo or have followed its journey for many years, I encourage you to pause as you read this and consider the wonder of where Amaudo has come from and the possibilities of where it may still reach.



Godwin's Story

My mental illness started in 1987 when I was 15. On that fateful evening as I was taking supper with my brother, I suddenly started to hear strange voices in my head. Before I could reason what was happening, I had lost my memory and control of my mental faculties.

I was taken to different places for treatment but to no avail. On occasion my father would bring men who would bundle me to a native doctor for treatment in chains. It was horrifying. I saw myself in a constant state of internal disintegration and external shame.

One evening my father came home and saw my terrible condition. Soon after, he took me to a more powerful native doctor. After administering his medications, I regained my faculty for some weeks, only to relapse again. My family then took me to see a man called "The Final Bus Stop". After another relapse they gave up on me, it was 1999. Meanwhile, I completed my secondary school education amidst public stigmatisation. I was once shot almost dead by village vigilantes, whilst wandering late at night, not knowing where I was. They mistook me for a thief and opened fire. After this incident, my father left me to my fate.

It was at this point that the co-ordinator of Amaudo came into my life. From that moment my story started changing for good. Amaudo provided a safe space for me to recover. I was able to receive professional care alongside living in an active community. I gradually began to improve and Amaudo helped me get back in touch with my family.

After I got well, I completed my BSC in Biology and married my lovely wife and our union is blessed two beautiful girls. Without Amaudo and the psychiatric nurse that handled my case maybe I would be dead by now.

"Without Amaudo and the psychiatric nurse that handled my case maybe I would be dead by now."

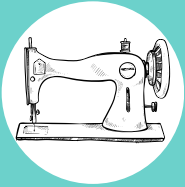


Amaudo 1

Amaudo 1 provides a residential, therapeutic community for people who are homeless and mentally ill. Rehabilitation takes place whilst residents and staff live, work, eat and socialise together. Rehabilitation can involve counselling, medication, training and family tracing. Most residents are reunited with their families and resettled back to their communities.

During 2022 a total of 44 residents lived at Amaudo 1. By December 20 residents were well enough to be discharged home to their families. During their stay at Amaudo residents learnt skills such as tailoring, hairdressing, bead making, trading, and farming to enable them to earn a livelihood and support themselves when they are discharged.

Amaudo UK support in 2022



**Workshop
Equipment**



Kitchen repairs



New beds



**Pathway
refurbishment**



“At Amaudo I felt safe for the first time in months. The peaceful setting and the encouraging staff enabled me to get well.” (Stella)

Amaudo 2

Amaudo 2 is a small, long stay community village. It has a family house for people with learning difficulties and smaller homes where people who are unable to be reunited with their families live. In 2022, 22 residents lived at Amaudo 2 with 11 staff to support them.

In August 2021, our longstanding supporter and dear friend of Amaudo, Margaret Clutterbuck, died. Having lived and worked in Nigeria for many years she was able to draw on her experiences and share her wisdom with us.

She established the Worcester Link Group to support Amaudo 2 which has been vital to the project's ongoing success. She inspired others to take this group forward when she was no longer able to, which has enabled it to raise thousands of pounds to support Amaudo 2 into the future. We are so grateful to her for establishing this group and are so thankful for those who continue to take it onwards.

With Margaret's generous legacy gift and donations raised at her funeral, Amaudo, in partnership with her family, decided to refurbish the chapel at the heart of Amaudo 2.



“This chapel was rebuilt by the family of Margaret Clutterbuck in memory of their mother who supported the work of Amaudo during her lifetime.”

Memorial plaque at the Chapel of Peace, Amaudo 2



2 new roofs for community village houses



Training

During 2022 Amaudo UK funded two mental health training events. In July a training seminar was held for Ministers of Methodist Church Nigeria in the Uzuakoli Diocese. The theme of the training was "The role of the pastoral staff of the church in community mental health". The training focused on engaging the pastoral staff of the church to identify and refer their members, who have mental health needs, to the community mental health clinics or to Amaudo for treatment, support and rehabilitation.

Forty-four participants, including the new Bishop, Rt Rev Dr James Alozie Anyawu, participated in the training. It was a great achievement to bring the ministers, many who have been newly posted to the Diocese, to see Amaudo for the first time. Most of the ministers confessed that they were amazed at the residential facility and how well the residents were.

The second training event was held in August for Community Psychiatric Nurses (CPNs) from Imo and Abia State. The Training focused on atypical psychotropic drugs. Dr Obayi Okwudili, a Consultant Psychiatrist from Ebonyi State Teaching Hospital, was the main speaker. Dr Okwudili was very detailed in the training and many of the nurses asked questions and shared their experiences in the field. After the training the nurses said that they felt motivated and empowered with their new knowledge and skills. The Executive Secretary of Abia State Primary Health Care Development Agency also attended the training together with a media team. In total there were 22 participants including 5 staff from Amaudo.



Training for
44 Ministers



Training
for Community
Psychiatric Nurses



Training

For many years Amaudo has hosted students as part of their general nursing course, providing training in mental health skills and giving student nurses the opportunity to observe Amaudo's projects. In 2022 Amaudo provided training for 782 student nurses.

With such large numbers of students it has been a challenge to accommodate them all at Amaudo and students have often had to sleep on the floor. It was therefore such a boost to finally secure funding to build a hostel to house students and other groups who come and visit Amaudo to learn about the work.

Funding from the Bloom Health Foundation was secured during the year and work began immediately. The foundation laying for the student's hostel was done on 30th September 2022 by the Amaudo Board Chairman, Rt Rev Dr Alozie Anyanwu.

By early 2023 a 48 bed hostel, powered by solar panels, will be completed. Funding will also cover beds, desks, chairs and bookshelves.



In early 2023 Amaudo's Director, Very Rev Kenneth, will begin an online PGDip in Public Mental Health with Cape Town University.



Awareness Raising

The radio show is a weekly live phone in programme every Monday at 11.30 am to 12pm by the Broadcasting Corporation of Abia State (BCA) . Each week a mental health topic is discussed by professionals and relevant stakeholders to create awareness on mental health and promote the work of Amaudo. During the programme the public are invited to call in to contribute or ask questions.

The programme covers the Southeast States including Abia, Imo, Enugu, Ebonyi, Anambra and South-South states like Akwa Ibo, Rivers, Bayelsa, Delta, Edo, and Cross River States. Together these states have a population of over 50 million people.

Since the radio show began there has been an increase in people talking about mental health issues and more people are confident to discuss their mental health live on air. After each show there is an increase in people contacting Amaudo to ask for help and support. In 2024 we plan to have the radio show live streamed through Facebook where people can engage globally.



**LISTEN TO OUR RADIO SHOW every Monday
@Broadcasting Corporation of Abia State (BCA) 88.10 FM**



**Amaudo's weekly radio show
about mental health issues is
broadcast across 11 States
every Monday.**



Helping Hands School

The Helping Hands Primary School, in the nearby village of Mbokwa, was established by Amaudo as part of its commitment to support the local community. In recent years Amaudo UK has been providing an annual grant to contribute to teachers' salaries. This has meant that children do not miss out on school because their parents can't pay their school fees and the teachers get paid every month on time. This has resulted in children attending school more regularly and the school community focussing their energy on providing a good education rather than worrying about where basic costs are coming from. During 2023 Amaudo UK continued to provide a grant to contribute to teachers' salaries which has enabled 74 children to attend school regularly.

“If not for Amaudo, my child would not have been able to go to school because I cannot afford to pay school fees, but Amaudo has helped us by paying the teachers who teach our children.”



Teacher's Salaries paid for the year



Community Projects

Community Mental Health Programme

Amaudo's Community Mental Health Programme (CMHP) is actively providing community mental health care services for 5000 people who are mentally ill in the communities in Abia and Imo. The Programme is a pioneering collaboration between Amaudo and State Governments and other local stakeholders. Nurse-led clinics provide accessible and affordable care to people in their own communities and also support residents who have been discharged from Amaudo's residential centre.

The Programme continues to experience setbacks in Ebonyi and Anambra States who have struggled to replace retired psychiatric nurses. It is hoped that the training of general nurses in mental health skills at Amaudo will encourage a new generation of staff.

Amaudo's weekly radio show is helping to increase referrals to the Community Mental Health clinics and the programme co-ordinator continues to work with Government Departments to re-establish the programme in Ebonyi and Anambra.



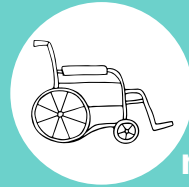
An ex-resident returning from the farm during a monthly supervision visit by CMHP staff

Project Comfort

During 2022 Project Comfort has continued to provide community-based rehabilitation for 95 children with physical and learning disabilities in communities in Bende, Ohafia and Isuikwuato Local Government Areas in Abia State.

This year Project Comfort focused on Ohafia Local Government Area to strengthen the successes that have been made through partnerships with the local women's group, philanthropists, traditional rulers and churches.

8 fieldworkers worked with children and their families providing therapeutic interventions, information and training. They also carried out awareness raising activities on child health topics and disability. Some children were supported by project Comfort to register for school.



**Project
Comfort
running costs**

Primary Healthcare Clinic

In a continuation of Amaudo's promise to support local communities, Amaudo has been working with the Abia State Primary Health Care Development Agency to launch a new primary health care clinic at Amaudo 1 which will provide health care to local people from Mbukwa and Itumbauzo.

In March the clinic opened and on the first day it provided basic health care to 85 people. They were treated for a range of health conditions including malaria and high blood pressure and 25 children were dewormed. People paid a small fee to register and were able to buy medication for an affordable amount. In the future the clinic will be open for 2 days a week.



**Equipment
for the Primary
Health Clinic**

Finances

	2022			2021		
	GENERAL	RESTRICTED	TOTAL	GENERAL	RESTRICTED	TOTAL
OPENING BALANCE	£35,460	£5,950	£41,410	£27,850	£9,202	£37,052
INCOME	£44,369	£34,766	£79,135	£47,167	£24,400	£71,567
EXPENDITURE	£56,141	£34,387	£90,528	£39,557	£27,652	£67,209
FINAL BALANCE	£23,687	£6,329	£30,016	£35,460	£5,950	£41,410

The receipt of a significant legacy from the late Margaret Clutterbuck, a further generous grant from the Good News Trust and two generous individual gifts have been major elements of Amaudo's income in 2022. As always, the generosity of those who contribute regularly by standing order underpin the ongoing role of Amaudo. Grant seeking and fundraising continue to be very challenging in the present economic climate and Amaudo is extremely grateful for the ongoing financial support which allows the development of the projects identified throughout the report.

John Pennells
Chair, Finance Committee

Reserves Policy
www.amaudo.org/documents

GRANT HIGHLIGHTS

£2,875
Kitchen Repairs

£5,375
Radio Awareness

£2,678
New Beds at Amaudo 1

£2,115
Training Events

£47,782
Chapel Refurbishment

£2,430
Project Comfort

£4,200
New roofs at Amaudo 2

£2,460
Helping Hands School

Very Rev Kenneth Nwaubani

Director of Amaudo Nigeria

I have come to believe that God understands the efforts and resources we are investing to ensure that we give hope to the people who have mental health problems in Nigeria, especially the people who are mentally ill and homeless. That may be the reason why Amaudo has continued to provide services to our service users, despite the difficult times in Nigeria. In fact, we faced many challenges in 2022 and I often wondered how Amaudo would survive the next month. But Amaudo did not stop because of a lack of funds and other resources because our local and foreign partners supported Amaudo during these difficult times. Indeed, your support to Amaudo in 2022 helped us to provide relevant mental health services to the target population.



“I can always assure you of the appreciation and joy of all Amaudo, our service users, and their families. Thank you for supporting Amaudo.”

Very Rev Kenneth Nwaubani

THANK YOU

As a small charity with big ambitions,
your donations have a huge impact.
Amaudo is truly grateful for every
penny you have so generously given
during 2022



Amaudo UK Team

AMAUDO UK STAFF

Kate Lumley (CEO)

Julieann Withey
(Administrator)

PATRON

Jackie Kay MBE FRSE

INDEPENDENT EXAMINER

Tunde Adesuyan

TRUSTEES

Sarah Dockree (Chair)

Dan Worrell (Vice-Chair)

Meagan Adriaans (Treasurer)

John Pennells (Secretary)

Enyi Anosike

Peter Dockree

Liuna Fekravar

Ayesha Murtaza

Leila Reid

Tejesh Mistry



CONTACT US

**Amaudo UK, Forest Hill Methodist Church & Centre,
Normanton Street, London SE23 2DS**

07765151030 amaudouk@amaudo.org www.amaudo.org

Registered Charity Number: 1084963

AMAUDO UK

(Charities Number 1084963)

ACCOUNTS FOR THE YEAR ENDED 31 DECEMBER 2022

AMAUDO UK

STATEMENT OF FINANCIAL ACTIVITIES FOR THE YEAR ENDED 31 DECEMBER 2022

	2022	2022	2022	2021	2021	2021
	General	Restrict	Total	General	Restrict	Total
	£	£	£	£	£	£
INCOME						
Regular Donors	10,277	5,988	16,265	10,816	6,012	16,828
Donations	28,280	28,778	57,057	32,190	18,388	50,578
	<hr/> 38,557	<hr/> 34,766	<hr/> 73,322	<hr/> 43,006	<hr/> 24,400	<hr/> 67,406
Grants			-			-
Gift Aid	5,803		5,803	4,161		4,161
Bank Interest	9		9	1		1
Total Income	<hr/> 44,369	<hr/> 34,766	<hr/> 79,135	<hr/> 47,167	<hr/> 24,400	<hr/> 71,567
EXPENDITURE						
Transfers to Nigeria		34,387	34,387		27,652	27,652
Nigeria expenses						
UK Expenditure						
Office rent and costs	2,568		2,568	2,542		2,542
Rent	2,400					
Stationery/telephone	168					
Salaries and costs	21,676		21,676	18,373		18,373
Salaries	18,464					
Pension and N. I.	3,212					
Software	380		380	362		362
Fundraising	2,276		2,276	2,268		2,268
Insurance	427		427	432		432
Employees travel	13		13	-		-
Local	13					
Overseas	-					
Sundry expenses	576		576	393		393
Trustees travel	-		-	-		-
Local	-					
Overseas	-					
Training	-		-	-		-
Donation	1,914		1,914	-		-
Contribution for Amaudo HQ	26,311		26,311	15,188		15,188
Depreciation	-		-	-		-
Total Expenditure	<hr/> 56,141	<hr/> 34,387	<hr/> 90,528	<hr/> 39,557	<hr/> 27,652	<hr/> 67,209
Net Income less Expenditure	(11,772)	379	(11,393)	7,610	(3,252)	4,358
Balance at beginning of the year	35,460	5,950	41,410	27,850	9,202	37,052
Balance at end of the year	<hr/> 23,687	<hr/> 6,329	<hr/> 30,016	<hr/> 35,460	<hr/> 5,950	<hr/> 41,410

AMAUDO UK

BALANCE SHEET AS AT 31 DECEMBER 2022

	Notes	2022	2021
		£	£
ASSETS			
Fixed Assets	3	-	-
Current Assets			
Debtors	4	10,214	8,818
Inventory	5	-	-
Cash at Bank		21,057	33,405
Total Current Assets		<u>31,271</u>	<u>42,223</u>
less Current Liabilities			
Creditors	6	1,255	814
Net Current Assets		<u>30,016</u>	<u>41,410</u>
Total Assets less Liabilities		<u>30,016</u>	<u>41,410</u>
FUNDS			
Restricted	7	6,329	5,950
less Unrestricted		23,687	35,460
		<u>30,016</u>	<u>41,410</u>

Signed on behalf of the Trustees of Amaudo

Chairman

Treasurer

AMAUDO UK

NOTES TO THE ACCOUNTS FOR THE YEAR ENDED 31 DECEMBER 2022

1 Accounting Policies

a Basis of Accounting

These accounts are prepared on the historical cost basis and in accordance with applicable recognised accounting standards and the statement of Recommended Practice on Accounting by Charities (the Charities SORP).

b Grants

Grants are recognised in the Statement of Financial Activities on an accruals basis in accordance with any pre-conditions.

c Donations, Fundraising and Gifts

Donations are recognised in the accounts on a received basis. Gifts in kind are recognised at their value to the charity (none were received in 2022).
No value is assigned to donated facilities.

d Expenditure

Expenditure is recognised on an accrual basis, with overheads being allocated to restricted and unrestricted overheads in proportion to donations and grants received.

e Capitalisation

Expenditure on repairs, renewals, plant and equipment which costs in excess of £200 is capitalised together with expenditure on Furniture and fitting and donated goods.

f Depreciation

Provision for depreciation of Fixed Assets held for use by the charity is made at annual rates calculated to spread the cost of each asset over its expected useful life.

The depreciation rate in use for this year is as follows:

Office equipment	33%
------------------	-----

g Taxation

No provision for taxation is included in these accounts as the charity is entitled to exemption from tax afforded by section 505 of the Income and Corporation Act 1988.

h Cash Flow

The charity qualifies as a small charity and therefore, in accordance with FRS 1, no cash flow is required.

AMAUDO UK

NOTES TO THE ACCOUNTS FOR THE YEAR ENDED 31 DECEMBER 2022

2 Employees

During the year the charity employed two people, each on a part time basis.

3 Fixed Assets

Office Furniture and Equipment

Cost	
Balance at 31 December 2021	1,023
Scrapped during the year	-
	<hr/>
Additions during the year	
Furniture	-
Office Equipment	-
	<hr/>
Balance 31 December 2022	1,023
	<hr/>
Accumulated Depreciation	
Balance at 31 December 2021	1,023
Utilised	-
	<hr/>
Charge for the year	-
	<hr/>
Balance 31 December 2022	1,023
	<hr/>
Net Book Value at 31 December 2021	-
Net Book Value at 31 December 2022	-

4 Debtors

	2022	2021
	£	£
Transfers made in advance to Amaudo Itambauzo	4,038	4,038
Gift Aid receivable	5,560	4,160
Office rental - deposit	450	450
Insurance - prepaid	165	170
Donations receivable from Virgin Money Giving account	-	-
	<hr/>	<hr/>
	10,214	8,818

5 Inventory

	2021	2020
	£	£
Learner packs	-	-

6 Creditors

	2021	2020
	£	£
Accruals	1,255	814
	<hr/>	<hr/>
	1,255	814

AMAUDO UK

NOTES TO THE ACCOUNTS FOR THE YEAR ENDED 31 DECEMBER 2022

7 Restricted Funds

The funds of the charity include restricted funds comprising the unexpended balances of donations and grants held on trust to be applied for specific purposes

	Movement in Funds			Balance 31 Dec
	Balance 1 Jan	Incoming	Outgoing Transfers	
Amaudo Itambauzo Headquarters	1,968	27,271	27,367	- 1,872
Amaudo 2 Ntalakwu	(1,436)	1,560	1,860	- (1,736)
Project Comfort	1,221	2,160	2,460	- 921
Amaudo 1	511	-	-	- 511
Education Fund	3,686	2,508	2,700	- 3,494
	5,950	34,766	34,387	- 6,329



Section A

Independent Examiner's Report

Report to the trustees

Charity Name
Amaudo UK

On accounts for the year ended

31st December 2022

Charity no (if any)

1084663

Set out on pages

(remember to include the page numbers of additional sheets)

I report to the trustees on my examination of the accounts of the above charity ("the Trust") for the year ended 31/12/2022

Responsibilities and basis of report

As the charity's trustees, you are responsible for the preparation of the accounts in accordance with the requirements of the Charities Act 2011 ("the Act").

I report in respect of my examination of the Trust's accounts carried out under section 145 of the 2011 Act and in carrying out my examination, I have followed all the applicable Directions given by the Charity Commission under section 145(5)(b) of the Act.

Independent examiner's statement

I have completed my examination. I confirm that no material matters have come to my attention in connection with the examination which gives me cause to believe that in, any material respect:

- the accounting records were not kept in accordance with section 130 of the Charities Act; or
- the accounts did not accord with the accounting records; or
- the accounts did not comply with the applicable requirements concerning the form and content of accounts set out in the Charities (Accounts and Reports) Regulations 2008 other than any requirement that the accounts give a 'true and fair' view which is not a matter considered as part of an independent examination.

I have no concerns and have come across no other matters in connection with the examination to which attention should be drawn in this report in order to enable a proper understanding of the accounts to be reached.

Signed:

Date: 02.12.2023

Name:

Ayotunde Adesuyan

Relevant professional qualification(s) or body (if any):

ACMA CGMA

Address:

23 Lower Downs Road

AMAUDO UK

England & Wales - Charity number 1084963

Accounts



AMAUDO

ANNUAL REPORT 2021



Student nurses at Amaudo learning about mental health in the community

MISSION STATEMENT

Amaudo UK works in partnership to create affordable, accessible and sustainable solutions for people with mental health needs in Nigeria.

AIMS

FUNDS FOR SUSTAINABLE DEVELOPMENT

We raise funds to assist in the sustainable development of Amaudo Itumbauzo through it's work in residential, community and educational support services.

AWARENESS OF MENTAL HEALTH ISSUES

We raise awareness of mental health issues affecting the communities that Amaudo Itumbauzo supports.

GUIDANCE, TRAINING & MENTORSHIP

We provide strategic guidance, training and mentorship for Amaudo Itumbauzo team to help them achieve their vision of changing more lives.







REPORT

KATE LUMLEY

CEO & Founder, Amaudo UK

2021 was still a year of uncertainty with the Covid restrictions ebbing and flowing in the UK, meanwhile in Nigeria they faced different struggles. Violence and protests erupted in towns local to Amaudo and the cost of living crisis saw many people go hungry. Even with this worrying background Amaudo was determined to continue delivering a wide range of mental health services to those that needed them. Yet again Amaudo's staff continued to impress us with their resilience and resourcefulness.

During the pandemic, mental health issues rose up the political and social agenda in many places. In Nigeria, Amaudo has grasped this opportunity and, for me, one of this years biggest successes has been the weekly radio show. Amaudo has driven the mental health narrative through a lively debate where mental health topics are discussed with an expert guest and calls from members of the public. It has become a safe yet powerful space for people to share their own mental health challenges, confronting the stigma and shame that so many people often feel.

The radio show is just one example which demonstrates how Amaudo is skilfully responding and evolving in an ever changing landscape. Faced with so many challenges their continued focus on sustainability, harnessing local resources, sharing their experience and championing mental health loudly and widely makes an impressive impact in this corner of the world.

CASE STUDY

OKORO'S STORY



Okoro was collected from the streets of Umuahia, the capital of Abia State, during the first week of January. He had been living beside a waste dump site. He appeared very unkempt with overgrown fingernails and he wore multiple female wigs which he tied on his hair. He was also wearing 15 women's bras. He asked us where we were taking him to, and we assured him that he was going somewhere that he would be taken care of and that he will be safe.

When he arrived at Amaudo he was able to bathe and have a hair cut. He had no insight about his mental health problems, and he claimed to be employed at the local dump site where he was paid N12,000 every month! He made remarkable progress during his first week at Amaudo, especially in his physical appearance. He was happy that he was given soap to bathe with and that Amaudo has given him clothes to wear. In fact, he removed his clothes to show staff that his body was clean. He was equally happy that the centre provided regular meals for him to eat. His delusions of working at the dump and being paid a monthly salary remained strong in the first few weeks and he regularly requested that Amaudo take him back to the dump to claim his salary.

Within 2 months of living at Amaudo, Okoro was able to take care of himself with minimal supervision. He happily engaged with the farming project, learning new skills. He worked very hard and was proud of his achievements, he told staff that when he harvests the vegetables he will take them to the kitchen so the cook can use them to prepare soup for the other residents.

Okoro was able to tell us his State of origin, which is the first step in us being able to trace his family. Okoro was emerging as a kind, hard-working and fun-loving member of our community. He loved to play draughts with other residents during our indoor games' afternoons.

After 5 months, Okoro was able to manage his personal care independently and was proactive in bathing, brushing his teeth, washing his clothes and dressing appropriately. He attended clinic daily and took his medication without any reminders. Okoro started to share information about his family and we learnt that he had a wife and child.

The next few months were an exciting time for Okoro, his family were successfully traced and he was able to return home. Amaudo staff discovered that he had been missing for over 2 years with his family members searching for him all over the State. Okoro will now live with his brother in the community supported by Amaudo staff.

In addition to support from residential staff, Okoro is also under the care of his local Community Psychiatric Clinic. Recently Amaudo carried out mental health awareness training in this village and worked with traditional rulers and local community members so as to increase their understanding of mental health issues and how best to support people. It is hoped that Okoro will enjoy the support and understanding of those he will be living alongside.



IMPACT

COMMUNITY MENTAL HEALTH



Amaudo's longstanding Community Mental Health Programme (CMHP) provided mental health care for 5000 people with mental health needs in the communities of Abia, Imo, Ebonyi and Anambra States. The Community Mental Health Programme has suffered some setbacks because of a lack of commitment by the governments of the beneficiary states especially Ebonyi and Anambra States who have struggled to replace retired psychiatric nurses. The CMHP Co-ordinator and Director continues to work with these Government departments to try and put in place strategies to address this.

In a continuation of Amaudo's promise to support initiatives in the communities surrounding Amaudo 1, Amaudo has worked with the Abia State Primary Health Care Development Agency to launch a new primary health care clinic in Itumbauzo which will provide health care to local communities.

5000+

people accessed support and care through Amaudo's Community Mental Health Programme

400

people attended the 'pop up' mental health clinic in Arochukwu

1

new primary health care clinic opened in Itumbauzo to provide healthcare to local villagers

On July 10th, Amaudo's Free Mobile Community Mental Health Programme opened a 'pop up' clinic in Arochukwu Local Government Area. The clinic provided mental health services to local people, many of whom had been identified beforehand and encouraged to come on the day by volunteer fieldworkers. The event was advertised on the local radio stations and Amaudo staff worked with community leaders to ensure the engagement of the community.

On the day, 57 people with mental health needs accessed help and were started on treatment paths, 3 of whom were taken back to Amaudo for residential care and rehabilitation. A mental health awareness campaign in the village engaged over 400 people.

Eke's Story

During the community mental health outreach day in Arochukwu the Amaudo team noticed Eke wandering around the market place. He was wearing clothes he had made himself from sack bags and was talking loudly to himself. We discovered that he was well known to local people but they didn't know what to do about him. Many felt scared by his presence and some had witnessed him being verbally abused. Staff managed to locate his family who explained that they had visited a herbal doctor but it hadn't helped and they were unsure what else they could do. They agreed that Amaudo could take him back to their Centre where he could receive treatment and support until he was well enough to return home.



IMPACT

TRAINING & AWARENESS RAISING



In March 2021, the Very Rev Kenneth launched a dedicated weekly radio show, sponsored by Amaudo UK. Each week he discusses different aspects of mental health with guests and callers. The radio show has proven to be an excellent medium for raising awareness and has resulted in a large number of listeners seeking further information and help.

Despite Covid constraints, Amaudo was still able to train 120 Student Nurses in "Community Mental Health Care" in 2021 and undertook training with Methodist Ministers on the theme "The role of the church in mental health care and advocacy". There were 86 participants including the Bishop, the Rt Rev O C Chiemeka and his wife. Ministers reported that they felt empowered by the training to support those members of their churches who may have a mental health need and to refer them to the nearest community mental health clinic for treatment and support.

120

student nurses stayed at Amaudo to participate in training on Community Mental Health Care

48

live radio shows in 2021 every Monday morning to discuss a range of mental health topics with guests

86

ministers came to Amaudo to explore "The role of the church in mental health care and advocacy"

IMPACT

AMAUDO 1 & 2



Amaudo 1 provides a residential therapeutic community for homeless mentally ill people. Residents live alongside staff and are provided with a safe room to stay, regular meals, physical and psychological healthcare, support and training. During 2021 a total of 40 residents lived at Amaudo 1. 28 people were admitted during the year. In December 20 residents were well enough to be discharged home to their families. During their stay at Amaudo residents learnt skills such as tailoring, hairdressing, bead making, trading, and farming to enable them to earn a livelihood and support themselves when they are discharged.

Amaudo 2 is a small, long stay community village. It has a family house for people with learning difficulties and smaller homes where people live who are unable to be reunited with their families. In 2021, 24 residents lived at Amaudo 2 with 11 staff to support them.

28

homeless, mentally ill people were collected from the streets and brought to Amaudo 1

20

residents completed their rehabilitation at Amaudo 1 and went home to their families and communities.

24

residents lived in the family house & community village at Amaudo 2 with a team of house parents



IMPACT

INFRASTRUCTURE & AGRICULTURE

During the year Amaudo UK was able to make a final grant to fund the refurbishment of the conference hall. This has been a four year project to renovate an existing building which has been repurposed as a training venue. Amaudo is always looking for ways to share mental health skills and knowledge and hopes that having the facilities to this will encourage even more visitors. Amaudo also reroofed the chapel at Amaudo 1 and continued re-roofing houses at Amaudo 2.

To try and combat some of the escalating food costs, Amaudo has invested heavily in expanding it's agricultural activities. During the year Amaudo has grown cocoa, plantain, cassava, melon, palm fruit and vegetables. It is able to process it's own palm oil and garri, a staple food eaten daily. It has also kept goats and poultry. In addition to providing food the farm gives residents the opportunity to learn farming skills which will be important when they return home to mostly rural communities.

100%

of palm oil used by Amaudo is grown and processed on site.

180

chickens have been kept to provide eggs and meat for residents and staff at Amaudo 1 and 2

7

roofs have now been replaced at Amaudo 2. We're still trying to raise funds for the remaining 9

IMPACT

PROJECT COMFORT



During 2021 Project Comfort provided community based rehabilitation (CBR) for 96 children with physical and learning disabilities in Bende, Isuikwuato and Ohafia Local Government Areas of Abia State.

The project collaborated with local people including women leaders, primary health care attendants and community leaders to identify children with disabilities who may benefit from the programme's therapeutic interventions and support. Project Comfort fieldworkers delivered training on how to support children with disabilities to parents and wider family members.

The project also organised training programmes for pregnant women and nursing mothers on child health topics particularly those where illness and subsequent disability may be prevented. Some children were supported by project Comfort to register for school.

96

children with special needs received rehabilitation and support from Project Comfort

3

Local Government Areas of Abia State were covered by the services of Project Comfort

8

fieldworkers provided therapeutic interventions for children with learning disabilities

IMPACT

HELPING HANDS SCHOOL



The Helping Hands primary school, in the nearby village of Mbokwa, was established by Amaudo as part of its commitment to support the local community. In recent years Amaudo UK has been providing an annual grant to contribute to teachers' salaries. This has meant that children do not miss out on school because their parents can't pay their school fees and the teachers get paid every month on time. This has resulted in children attending school more regularly and the school community focussing their energy on providing an education rather than worrying about where basic costs are coming from. During 2021 Amaudo UK continued to provide a grant to contribute to teachers' salaries which has enabled 98 children to attend school regularly.

"If not for Helping Hands our children would have remained illiterates because we can not afford the cost of education. Even if we had the money the road is so bad for our children to trek to another community for a basic education" Year 3 Parent

98

local children attended school during 2021

350

previous students have now completed university, studying subjects such as law, medicine & engineering

9

teachers work at the school including the headteacher who has been in post for over 20 years

FINANCIAL SUMMARY 2021

	2021			2020		
	GENERAL	RESTRICTED	TOTAL	GENERAL	RESTRICTED	TOTAL
OPENING BALANCE	£27,850	£9,202	£37,052	£16,985	£10,594	£27,579
INCOME	£47,167	£24,400	£71,567	£29,329	£10,454	£39,783
EXPENDITURE	£39,557	£27,652	£67,209	£18,464	£11,846	£30,310
FINAL BALANCE	£35,460	£5,950	£41,410	£27,850	£9,202	£37,052

The continuing generosity of those who make a regular contribution by standing order underpins the financial health of Amaudo UK. A further generous grant from the Lindsays Good News Trust and donations in memory of the late Margaret Clutterbuck have ensured that it has been possible to make grants to Amaudo in Nigeria to further specific projects. Fundraising remains a challenge in the current economic climate and our sincere thanks are offered to all those who continue to give. As new ways of fundraising are explored, the support of the online shop has been a great encouragement.

John Pennells
Chair, Finance Committee

GRANT HIGHLIGHTS

£2,000

Agricultural Equipment

£5,300

Radio Awareness

£3,500

Infrastructure Projects

£3,000

Community Mental Health

£1,800

Amaudo 2 Running Costs

£2,400

Project Comfort

£2,500

Covid Recovery Grant

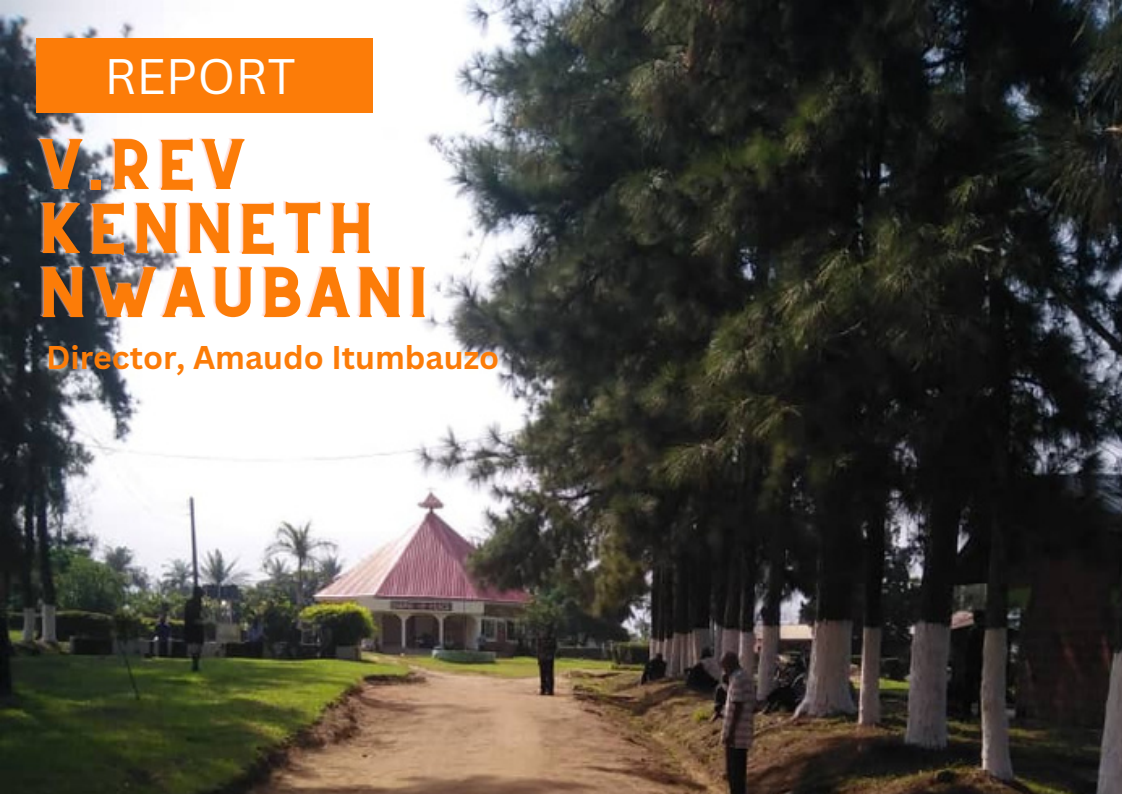
£2,500

Helping Hands School

REPORT

V. REV KENNETH NWAUBANI

Director, Amaudo Itumbauzo



The year 2021 was a challenging year for Amaudo, financially and socially, due to the COVID-19 pandemic and the subsequent insecurity and violence which increased in Nigeria. The situation caused an increase in the cost of goods and services for example in the price of food items, diesel and petrol, psychotropic drugs and services to maintain the generators and vehicles. For me, as the manager of Amaudo 2021 was a tough year. Despite the difficulties, Amaudo overcame the storm and carried out treatment and rehabilitation of people who have mental health challenges, and children with disabilities. We discharged 20 residents and reunited them with their families. All Amaudo projects including the Helping Hands School continued to receive their monthly funding and staff were paid their salaries throughout the year. We can say that Amaudo survived the horrible challenges occasioned by the COVID-19 pandemic because God is with Amaudo.

It is important to state here that Amaudo UK showed great commitment to supporting Amaudo despite the increase in COVID-19 in the UK. They provided the regular transfer of funds for monthly project support, a special fund to cushion the effect of COVID-19 and funds for infrastructural development like reroofing the Amaudo 2 residential building and equipping the community hall. They also funded the Community Mental Health Outreach project and the weekly radio awareness programme. Amaudo UK demonstrated her love and support for Amaudo Nigeria in 2021 despite the challenges. They helped us to remain strong and we can only thank them for their support during those horrible times of 2021.



REPORT

DAN WORRELL

Chair, Amaudo UK

After the challenging events of 2020, we all entered 2021 with a new found sense of hope and optimism for the future. Alas, myriad challenges continued; be they Covid related, political or economic. But difficult times often bring out the best in people and the Amaudo community has certainly come together to safeguard the future of the organisation, and continue to innovate and pioneer our important work in the mental health sector in the region. The team in Nigeria always amaze me with their resilience and ability to continually step up and meet new challenges head on, and I'm pleased to say the organisation continues to thrive as a result.

The team at Amaudo UK refocused their efforts for fundraising and pivoted to support the needs of the team in Nigeria, to great effect. The operational set-up in Nigeria has become more sustainable as a result and fundraising performance remains strong. We ended the year in a good position thanks to the efforts of everyone involved, particularly the leadership of Rev Kenneth in Nigeria and Kate in the UK, and I'm pleased to say Amaudo remains well placed not just to meet any further challenges ahead, but to keep building on the achievements previously made. Our various programmes continue to impact the lives of more and more people and it's this impact that continues to motivate all involved.

THANK YOU

As a small charity with big ambitions, your donations have a huge impact. Amaudo is truly grateful for every penny you have so generously given during 2021





INFORMATION

AMAUDO UK TEAM

AMAUDO UK STAFF

Kate Lumley (CEO)
Julieann Withey
(Administrator)

PATRON

Jackie Kay MBE FRSE

INDEPENDENT EXAMINER

Alfonso del Valle

TRUSTEES

Dan Worrell (Chair)
Tejesh Mistry (Vice-Chair)
Meagan Adriaans (Treasurer)
John Pennells (Secretary)
Enyi Anosike
Sarah Dockree
Peter Dockree
Liuna Fekravar
Michelle Knaggs
Ayesha Murtaza
Leila Reid

CONTACT US

Amaudo UK, Forest Hill Methodist Church & Centre,
Normanton Street, London SE23 2DS

07765151030

amaudouk@amaudo.org

www.amaudo.org

Registered Charity Number: 1084963

AMAUDO UK

(Charities Number 1084963)

ACCOUNTS FOR THE YEAR ENDED 31 DECEMBER 2021

AMAUDO UK

STATEMENT OF FINANCIAL ACTIVITIES FOR THE YEAR ENDED 31 DECEMBER 2021

	2021 General £	2021 Restrict £	2021 Total £	2020 General £	2020 Restrict £	2020 Total £
INCOME						
Regular Donors	10,816	6,012	16,828	7,631	6,079	13,710
Donations	32,190	18,388	50,578	17,419	4,375	21,794
	43,006	24,400	67,406	25,050	10,454	35,504
Grants			-			-
Gift Aid	4,161		4,161	4,273		4,273
Bank Interest	1		1	6		6
Total Income	47,167	24,400	71,567	29,329	10,454	39,783
EXPENDITURE						
Transfers to Nigeria		27,652	27,652		11,846	11,846
Nigeria expenses						
UK Expenditure						
Office rent and costs	2,542		2,542	2,461		2,461
Rent	2,400					
Stationery/telephone	142					
Salaries and costs	18,373		18,373	12,462		12,462
Salaries	16,407					
Pension and N. I.	1,966					
Software	362		362	575		575
Fundraising	2,268		2,268	-		-
Insurance	432		432	410		410
Employees travel	-		-	109		109
Local	-					
Overseas	-					
Sundry expenses	393		393	1,317		1,317
Trustees travel	-		-	-		-
Local	-					
Overseas	-					
Training	-		-	30		30
Donation	-		-	-		-
Contribution for Amaudo HQ	15,188		15,188	1,100		1,100
Depreciation	-		-	-		-
Total Expenditure	39,557	27,652	67,209	18,464	11,846	30,310
Net Income less Expenditure	7,610	(3,252)	4,358	10,865	(1,392)	9,473
Balance at beginning of the year	27,850	9,202	37,052	16,985	10,594	27,579
Balance at end of the year	35,460	5,950	41,410	27,850	9,202	37,052

AMAUDO UK

BALANCE SHEET AS AT 31 DECEMBER 2021

	Notes	2021	2020
		£	£
ASSETS			
Fixed Assets	3	-	-
Current Assets			
Debtors	4	8,818	8,570
Inventory	5	-	-
Cash at Bank		33,405	28,956
Total Current Assets		<u>42,223</u>	<u>37,525</u>
less Current Liabilities			
Creditors	6	814	474
Net Current Assets		<u>41,410</u>	<u>37,052</u>
Total Assets less Liabilities		<u>41,410</u>	<u>37,052</u>
FUNDS			
Restricted	7	5,950	9,202
less Unrestricted		35,460	27,850
		<u>41,410</u>	<u>37,052</u>

Signed on behalf of the Trustees of Amaudo

Chairman

Treasurer

AMAUDO UK

NOTES TO THE ACCOUNTS FOR THE YEAR ENDED 31 DECEMBER 2021

1 Accounting Policies

a Basis of Accounting

These accounts are prepared on the historical cost basis and in accordance with applicable recognised accounting standards and the statement of Recommended Practice on Accounting by Charities (the Charities SORP).

b Grants

Grants are recognised in the Statement of Financial Activities on an accruals basis in accordance with any pre-conditions.

c Donations, Fundraising and Gifts

Donations are recognised in the accounts on a received basis. Gifts in kind are recognised at their value to the charity (none were received in 2021).
No value is assigned to donated facilities.

d Expenditure

Expenditure is recognised on an accrual basis, with overheads being allocated to restricted and unrestricted overheads in proportion to donations and grants received.

e Capitalisation

Expenditure on repairs, renewals, plant and equipment which costs in excess of £200 is capitalised together with expenditure on Furniture and fitting and donated goods.

f Depreciation

Provision for depreciation of Fixed Assets held for use by the charity is made at annual rates calculated to spread the cost of each asset over its expected useful life.

The depreciation rate in use for this year is as follows:

Office equipment	33%
------------------	-----

g Taxation

No provision for taxation is included in these accounts as the charity is entitled to exemption from tax afforded by section 505 of the Income and Corporation Act 1988.

h Cash Flow

The charity qualifies as a small charity and therefore, in accordance with FRS 1, no cash flow is required.

AMAUDO UK

NOTES TO THE ACCOUNTS FOR THE YEAR ENDED 31 DECEMBER 2021

2 Employees

During the year the charity employed two people, each on a part time basis.

3 Fixed Assets

Office Furniture and Equipment

Cost	
Balance at 31 December 2020	1,023
Scrapped during the year	-
	<hr/>
Additions during the year	
Furniture	-
Office Equipment	-
	<hr/>
Balance 31 December 2021	1,023
	<hr/>
Accumulated Depreciation	
Balance at 31 December 2020	1,023
Utilised	-
	<hr/>
Charge for the year	-
	<hr/>
Balance 31 December 2021	1,023
	<hr/>
Net Book Value at 31 December 2020	-
Net Book Value at 31 December 2021	-

4 Debtors

	2021	2020
	£	£
Transfers made in advance to Amaudo Itambauzo	4,038	4,038
Gift Aid receivable	4,160	3,667
Office rental - deposit	450	450
Insurance - prepaid	170	168
Donations receivable from Virgin Money Giving account	-	247
	<hr/>	<hr/>
	8,818	8,570

5 Inventory

	2021	2020
	£	£
Learner packs	-	-

6 Creditors

	2021	2020
	£	£
Accruals	814	474
	<hr/>	<hr/>
	814	474

AMAUDO UK

NOTES TO THE ACCOUNTS FOR THE YEAR ENDED 31 DECEMBER 2021

7 Restricted Funds

The funds of the charity include restricted funds comprising the unexpended balances of donations and grants held on trust to be applied for specific purposes

	Balance	Movement in Funds			Balance
	1 Jan	Incoming	Outgoing	Transfers	31 Dec
Amaudo Itambauzo Headquarters	(60)	18,272	16,244	-	1,968
Amaudo 2 Ntalakwu	(1,036)	1,460	1,860	-	(1,436)
Project Comfort	1,521	2,160	2,460	-	1,221
Amaudo 1	4,899	-	4,388	-	511
Education Fund	3,878	2,508	2,700	-	3,686
	9,202	24,400	27,652	-	5,950

AMAUDO UK

TREASURER'S REPORT ON THE ACCOUNTS FOR THE YEAR ENDED 31 DECEMBER 2021

Preamble

The General Funds surplus of £7,610 for the year shows a decrease in general funds of £3,255 versus 2020. Excluding the contribution to Amaudo HQ as per trustee approval, the General Funds increased by £22,798 (increase of £10,833 versus 2020). This increase versus 2020 is largely attributable to higher donations, partially offset by the annualisation of payroll costs and fundraising related expenses.

Non-regular donations in 2021 increased by £14,711. This included funds received from the Lindsays Good News Trust in 2021 (£10,000). For Restricted Funds, excluding the contribution from Amaudo HQ of £15,188 (2020: £1,100) donations decreased by £1,175.

Accounts for the Year

Restricted Funds

During the year £24,400 was received in respect of Restricted Funds (2020: £10,454) whilst the amount transferred/expended on behalf of Amaudo Nigeria totalled £27,652 (2020: £11,846).

General Funds

During the year income totalled £47,167 (2020: £29,329) whilst expenditure increased to £39,557 (2019: £18,464), £15,188 of which related to the contribution to Amaudo HQ as per trustee approval (2020: £1,100). This resulted in a surplus for the year of £7,610 (2020: £10,865).

The income (before gift aid) for the current year increased by £17,951 versus 2020, with higher donations in 2021 including funds received from the Lindsays Good News Trust.

Excluding the contribution to Amaudo HQ as mentioned above, expenditure increased by £7,005 versus 2020. This is mainly due to an annualisation of payroll costs in the year and fundraising related expenses.

AMAUDO UK

England & Wales - Charity number 1084963

Accounts

AMAUDO

Making an impact in mental health

Annual Report 2020





Mission

Amaudo UK works in partnership to create affordable, accessible and sustainable solutions for people experiencing mental health problems or learning disabilities in Nigeria.

Aims

FUNDS FOR SUSTAINABLE DEVELOPMENT

We raise funds to assist in the sustainable development of Amaudo Itumbauzo through its work in residential, community and educational support services.

AWARENESS OF MENTAL HEALTH ISSUES

We raise awareness of mental health issues affecting the communities that Amaudo Itumbauzo supports.

GUIDANCE, TRAINING & MENTORSHIP

We provide strategic guidance, training and mentorship for the team at Amaudo Itumbauzo to help them achieve their vision of changing more lives.



Kate Lumley

CEO and Founder

We headed into 2020 full of exciting plans and new ideas. We had projects to roll out, training to undertake and all kinds of fundraising activities lined up. And then Covid-19 struck and who would ever have believed the overwhelming impact it would have on all of our lives?

Very Rev Kenneth, Amaudo's Director, was quick to put plans in place to make sure all the residents and staff stayed safe. He implemented Covid protocols and trained staff to follow them. He also secured supplies of food, fuel and PPE and shared these with local communities in need. Thankfully no one fell sick, and Covid rates in this region of Nigeria have, so far, stayed low. The biggest challenge has been rising prices of basic goods and a marked decrease in local donations.

Despite the tragedies and uncertainties of the past year there have been some unexpected gifts. Simple acts of kindness, reaching out and caring for one another. Mental health has climbed the political agenda and we hope will stay a priority as we come out of the pandemic.

The slower pace has enabled us to have time to think and reflect about Amaudo and it's work and we continue to make exciting plans and develop new ideas. Hopefully we will be able to implement them soon.

Very Rev. Kenneth Nwaubani

Director, Amaudo Itumbauzo

The beginning of a new year in Amaudo comes with great excitement, zeal, and energy to engage in the proposed activities for the year. The passion to go to the streets and bring in people who are mentally ill and homeless to benefit from the rehabilitation, to visit clinics and support the psychiatric nurses, to identify children who have disabilities in communities and support them to live normal lives and to raise funds and create awareness about mental health. To achieve these, we have to collaborate with communities, service users, local and international funders, professionals, government etc. There will be travels, communications, and contacts with stakeholders. So, in January 2020 our doors were open for work.

But surprisingly and gradually the rumours and news about the Covid-19 began to spread. It was very far away in Wuhan, China so we, in the remote environment at Amaudo, were not worried because we thought it would be difficult for the disease to travel to Nigeria. We thought that if it did it would be controlled or its effect would be reduced before it reached us. Unfortunately, our assumptions were proved wrong, in a few months, this strange and devastating illness had spread around many countries. In Nigeria, the Federal Ministry of Health confirmed the first case of Covid-19 on 27th February 2020.

4th May 2020 will remain in the memory of the people of Nigerian because of the first lockdown by the Federal government to check the spread of the Covid-19 Pandemic. Then there came the other protocols of social distancing, wearing of face masks and regular hand washing etc. The lockdown and other measures seemed impossible and people found it hard to adjust to the new ways of life.

At Amaudo, the lockdown and social distancing affected our community life and services because community life is a life of sharing, touching, and living together. It was also very difficult to reach those in other communities. Nevertheless, we quickly reviewed our work so that Covid-19 would not be used as an excuse to neglect people who have disabilities especially people with mental health problems who before the pandemic already suffered social distance and other forms of restrictions. Covid-19 was a true test of our resilience and God helped us to overcome the challenges of hunger, high cost of food and service provision. None of Amaudo's project stopped, we did not lose any staff or resident. We discharged 20 recovered residents back home and children with disabilities were attended to despite the pandemic.

We were highly encouraged by the financial support we received from Amaudo UK to counter the economic and social effect of the pandemic even though the impact of Covid-19 was strong in the UK. We must praise and thank God Almighty for protecting all of us at Amaudo even though we risked our lives to go out to support our residents and other service users in the communities. We are very glad and grateful to God for protecting all at Amaudo UK. We sympathise with those who have lost their father, mother, child, or friend because of the Covid-19 pandemic.



STEPHEN IWUAMADI, AMAUDO 1 HOUSE PARENT

Amaudo 1

Amaudo 1 provides a residential therapeutic community for homeless mentally ill people. Residents live alongside staff and are provided with a safe room to stay, regular meals, physical and psychological healthcare, support and training.

During 2020 Amaudo 1 supported 29 residents which was less than usual due to the Covid-19 pandemic. By December 15 were well enough to go home to their families.

Amaudo 2

Amaudo Ntalakwu is a small long stay community village. It has a family house for people with learning difficulties and smaller homes where people who are unable to be reunited with their families live. In 2020 there were 25 residents housed at Amaudo Ntalakwu.

Covid-19 Impact

Amaudo did not have any cases of Covid-19 during 2020 however they were severely impacted by the Government lockdown which restricted movement and saw the cost of basic supplies rise significantly. Amaudo UK was awarded a grant from the Joffe Foundation which was used to purchase PPE for staff and to ensure that Amaudo's water systems were in good order and running throughout the day for regular handwashing. It was also used to buy food which was distributed to local villages and members of Amaudo's Self Help Group.



Project Comfort

In 2020, Project Comfort provided support and rehabilitation for 88 children with a range of physical and learning disabilities from Bende, Ohafia and Isuikwuato Local Government Areas. The project also provided assistive devices for children with disabilities to enable them to sit, walk or move around. Families who had malnourished children were supported to enable them to regain their growth.

On the ground

“During the second lockdown I mobilised the Project Comfort team to go to Ohafia because 3 children within the ages of 4- 5 month were booked for rehabilitation to correct club foot which was seriously affecting their legs.

We went to Ohafia with our protective equipment like face masks, gloves etc and we cast plaster of Paris on their feet so that the children’s’ feet could be corrected. I was filled with excitement because we could go out during such difficult time to help those children to overcome what would have caused long term deformity to their feet and that would affect their movement when they grow up.

We can always do just little things to change somebodies’ life especially during difficult times. If we fail to do that little thing someone (maybe a child) may live with deformity which could have been corrected. This is what Amaudo is doing.”

Community Mental Health

During 2020 the Community Mental Health Programme provided mental health care for approximately 5200 people across communities in Abia, Imo, Ebonyi and Anambra States.

Psychiatric Nurses went above and beyond their duties to deliver care. However the project did experience a small rise in relapsed cases because of economic challenges and the restrictions in movement which made it difficult for some clients to access mental health services from the clinics.

Amaudo continued to ensure that psychotropic drugs were constantly supplied and that nurses received support and supervision during the lockdown.

Since the end of Amaudo's Mobile Mental Health project there have been a number of communities which have stayed in touch with Amaudo and worked hard to improve the mental health support and services locally. In the community of Ovim they have opened a new community mental health outreach clinic with the support of Amaudo and the approval of the Abia State Primary Health Development Agency who have posted a permanent community psychiatric nurse to the clinic.

In addition to this, one of the traditional rulers from Ovim volunteered to be on the Board of Amaudo to give traditional rulers a voice in the strategic planning of the organisation.





Agriculture

With escalating costs and supply issues facing Nigeria the farm has become an important investment at Amaudo. During 2020 Amaudo expanded its production of cassava, melon, and vegetables to reduce the feeding costs of the residents at Amaudo 1 and 2.

The palm plantation is now 5 years old and is running well. It produces all the palm oil needed at Amaudo 1 and 2. Amaudo is also self-sufficient in garri, a staple eaten daily. Amaudo also keeps goats and grows cocoa and plantain.

In addition to providing food the farm gives residents the opportunity to learn farming skills which will be important when they return home to mostly agricultural communities.



Student Nurse Training

During 2020 Amaudo hosted 30 students from School of Psychiatric Nursing Calabar. They were given the opportunity to experience community mental health work and shadow Amaudo's staff. The goal for the student nurses project is to increase the mental health skills of nurses and improve their capacity to engaged in mental health care both directly and indirectly as part of their nursing practice.

All other nurse training plans had to be postponed due to the pandemic.

Helping Hands School

Amaudo UK has been supporting the Helping Hands School by providing a regular grant to fund the teacher's salaries. This has meant that children do not miss out on school because they can't pay their school fees and in addition teachers get paid every month on time. As a result, the children are attending more frequently and the school community is focussing their energy on providing an education rather than worrying about where basic costs are coming from.

2020 Financial Summary

	2020			2019		
	GENERAL	RESTRICTED	TOTAL	GENERAL	RESTRICTED	TOTAL
OPENING BALANCE	£16,985	£10,594	£27,579	£18,826	£13,346	£32,172
INCOME	£29,329	£10,454	£39,783	£32,860	£32,515	£65,375
EXPENDITURE	£18,464	£11,846	£30,310	£34,701	£35,266	£69,967
FINAL BALANCE	£27,850	£9,202	£37,052	£16,985	£10,595	£27,580

Overall the finances of Amaudo UK are in a better state than might have been expected thanks mainly to the ongoing support received through regular giving and a generous grant from the Lindsays Good News Trust.

Expenditure was also lower than planned due to Covid-19 which meant that unfortunately there was no opportunity to visit Nigeria. The year ended with a comfortable surplus.

Access to grants became difficult through the year due to Covid-19 and this is likely to be an ongoing issue for the foreseeable future. We have employed the services of a professional fundraiser to support our fundraising efforts particularly with grant applications.

Our thanks as always to all those who have continued to support Amaudo in these difficult times, helping to change lives in Nigeria.

John Pennells
Chair, Finance Committee



Dan Worrell

Chair, Amaudo UK

I don't think any of us could have anticipated the events that would overtake the world in 2020. From the first few cases of Covid-19 being reported in Wuhan in China in January to the lockdowns around the globe from March, the speed and impact of the global pandemic was unprecedented. Thankfully the public health impact in rural Nigeria has so far been limited compared to many nations, but the economic impact is now starting to bite.

Thanks to the hard work of the team Amaudo UK fundraising remained resilient in 2020, but as we look ahead to 2021 the picture in Nigeria looks increasingly difficult. Inflation is high and overhead costs continue to increase, whilst local revenues are down. The UK team will continue to support the efforts of the team in Nigeria to ensure organizational stability in the long term.



MADAME ALICE, AMAUDO 2 RESIDENT

AMAUDO UK STAFF

Kate Lumley (CEO)
Julieann Withey

PATRON

Jackie Kay MBE FRSE

INDEPENDENT EXAMINER

Alfonso del Valle

TRUSTEES

Dan Worrell (Chair)
Tejesh Mistry (Vice-Chair)
Meagan Adriaans (Treasurer)
Sarah Dockree
Enyi Anosike
Peter Dockree
Michelle Knaggs
Liuna Fekravar
Ayesha Murtaza
John Pennells
Leila Reid

Address: Amaudo UK, Forest Hill Methodist Church,
Normanton Street, London SE23 2DS
Telephone: 07765151030
Email: amaudouk@amaudo.org
Website: www.amaudo.org

 [Facebook.com/Amaudo](https://www.facebook.com/Amaudo)

 [Instagram.com/Amaudo_Itumbauzo](https://www.instagram.com/Amaudo_Itumbauzo)

 [Twitter.com/Amaudo](https://www.twitter.com/Amaudo)

Registered Charity Number 1084963

AMAUDO UK

(Charities Number 1084963)

ACCOUNTS FOR THE YEAR ENDED 31 DECEMBER 2020

AMAUDO UK

STATEMENT OF FINANCIAL ACTIVITIES FOR THE YEAR ENDED 31 DECEMBER 2020

	2020 General £	2020 Restrict £	2020 Total £	2019 General £	2019 Restrict £	2019 Total £
INCOME						
Regular Donors	7,631	6,079	13,710	7,531	6,079	13,610
Donations	17,419	4,375	21,794	10,620	26,436	37,056
	25,050	10,454	35,504	18,151	32,515	50,666
Grants			-	10,000		10,000
Gift Aid	4,273		4,273	4,698		4,698
Bank Interest	6		6	11		11
Total Income	29,329	10,454	39,783	32,860	32,515	65,375
EXPENDITURE						
Transfers to Nigeria		11,846	11,846		35,266	35,266
Nigeria expenses						
UK Expenditure						
Office rent and costs	2,461		2,461	2,697		2,697
Rent	2,400					
Stationery/telephone	61					
Salaries and costs	12,462		12,462	17,551		17,551
Salaries	10,172					
Pension and N. I.	2,291					
Software	575		575	405		405
Fundraising	-		-	225		225
Insurance	410		410	606		606
Employees travel	109		109	1,808		1,808
Local	-					
Overseas	109					
Sundry expenses	1,317		1,317	1,179		1,179
Trustees travel	-		-	-		-
Local	-					
Overseas	-					
Training	30		30	-		-
Donation	-		-	500		500
Contribution for Amaudo HQ	1,100		1,100	9,730		9,730
Depreciation	-		-	-		-
Total Expenditure	18,464	11,846	30,310	34,701	35,266	69,967
Net Income less Expenditure	10,865	(1,392)	9,473	(1,841)	(2,752)	(4,592)
Balance at beginning of the year	16,985	10,594	27,579	18,826	13,346	32,172
Balance at end of the year	27,850	9,202	37,052	16,985	10,594	27,579

AMAUDO UK

BALANCE SHEET AS AT 31 DECEMBER 2020

	Notes	2020	2019
		£	£
ASSETS			
Fixed Assets	3	-	-
Current Assets			
Debtors	4	8,570	4,907
Inventory	5	-	-
Cash at Bank		28,956	23,066
Total Current Assets		<u>37,525</u>	<u>27,974</u>
less Current Liabilities			
Creditors	6	474	395
Net Current Assets		<u>37,052</u>	<u>27,579</u>
Total Assets less Liabilities		<u>37,052</u>	<u>27,579</u>
FUNDS			
Restricted	7	9,202	10,594
less Unrestricted		27,850	16,985
		<u>37,052</u>	<u>27,579</u>

Signed on behalf of the Trustees of Amaudo

Chairman

Treasurer

AMAUDO UK

NOTES TO THE ACCOUNTS FOR THE YEAR ENDED 31 DECEMBER 2020

1 Accounting Policies

a Basis of Accounting

These accounts are prepared on the historical cost basis and in accordance with applicable recognised accounting standards and the statement of Recommended Practice on Accounting by Charities (the Charities SORP).

b Grants

Grants are recognised in the Statement of Financial Activities on an accruals basis in accordance with any pre-conditions.

c Donations, Fundraising and Gifts

Donations are recognised in the accounts on a received basis. Gifts in kind are recognised at their value to the charity (none were received in 2020).

No value is assigned to donated facilities.

d Expenditure

Expenditure is recognised on an accrual basis, with overheads being allocated to restricted and unrestricted overheads in proportion to donations and grants received.

e Capitalisation

Expenditure on repairs, renewals, plant and equipment which costs in excess of £200 is capitalised together with expenditure on Furniture and fitting and donated goods.

f Depreciation

Provision for depreciation of Fixed Assets held for use by the charity is made at annual rates calculated to spread the cost of each asset over its expected useful life.

The depreciation rate in use for this year is as follows:

Office equipment	33%
------------------	-----

g Taxation

No provision for taxation is included in these accounts as the charity is entitled to exemption from tax afforded by section 505 of the Income and Corporation Act 1988.

h Cash Flow

The charity qualifies as a small charity and therefore, in accordance with FRS 1, no cash flow is required.

AMAUDO UK

NOTES TO THE ACCOUNTS FOR THE YEAR ENDED 31 DECEMBER 2020

2 Employees

During the year the charity employed two people, each on a part time basis.

3 Fixed Assets

Office Furniture and Equipment

Cost	
Balance at 31 December 2019	1,023
Scrapped during the year	-
	<hr/>
Additions during the year	
Furniture	-
Office Equipment	-
	<hr/>
Balance 31 December 2020	1,023
	<hr/>
Accumulated Depreciation	
Balance at 31 December 2019	1,023
Utilised	-
	<hr/>
Charge for the year	-
	<hr/>
Balance 31 December 2020	1,023
	<hr/>
Net Book Value at 31 December 2019	-
Net Book Value at 31 December 2020	-

4 Debtors

	2020	2019
	£	£
Transfers made in advance to Amaudo Itambauzo	4,038	-
Gift Aid receivable	3,667	4,107
Office rental - deposit	450	450
Insurance - prepaid	168	150
Donations receivable from Virgin Money Giving account	247	-
Contributions paid on behalf of employees	-	201
	<hr/>	<hr/>
	8,570	4,907

5 Inventory

	2020	2019
	£	£
Learner packs	-	-

6 Creditors

	2020	2019
	£	£
Accruals	474	395
	<hr/>	<hr/>
	474	395

AMAUDO UK

NOTES TO THE ACCOUNTS FOR THE YEAR ENDED 31 DECEMBER 2020

7 Restricted Funds

The funds of the charity include restricted funds comprising the unexpended balances of donations and grants held on trust to be applied for specific purposes

	Balance	ovement in Funds			Balance
	1 Jan	Incoming	Outgoing	Transfers	31 Dec
Amaudo Itambauzo Headquarters	-	2,096	2,156	-	(60)
Amaudo 2 Ntalakwu	164	660	1,860	-	(1,036)
Project Comfort	1,821	2,160	2,460	-	1,521
Amaudo 1	4,899	-	-	-	4,899
Refurbishment	925	575	1,500	-	0
Education Fund	2,785	2,563	1,470	-	3,878
Joffe Foundation	-	2,400	2,400	-	-
	10,594	10,454	11,846	-	9,202

AMAUDO UK

TREASURER'S REPORT ON THE ACCOUNTS FOR THE YEAR ENDED 31 DECEMBER 2020

Preamble

The General Funds surplus of £10,865 for the year shows an increase in general funds of £12,705 versus 2019. Excluding the contribution to Amaudo HQ as per trustee approval, the General Funds increased by £13,805 (increase of £4,075 versus 2019). This increase versus 2019 is largely attributable to higher donations, a decrease in payroll costs and lower travel expenses; partially offset by receipt of the Joseph Rank Trust grant received in 2019.

Non-regular donations in 2020 increased by £6,798. This was offset by the non-repeat of the Joseph Rank Trust grant received in 2019 (£10,000). For Restricted Funds, excluding the contribution from Amaudo HQ of £1,100 (2019: £9,730) donations decreased by £13,431 and is largely attributable to the prior year including Joffe Charitable Trust grant received.

Accounts for the Year

Restricted Funds

During the year £10,454 was received in respect of Restricted Funds (2019: £32,515) whilst the amount transferred/expended on behalf of Amaudo Nigeria totalled £11,846 (2019: £35,266).

General Funds

During the year income totalled £29,329 (2019: £32,860) whilst expenditure decreased to £18,464 (2019: £34,701). This resulted in a surplus for the year of £10,865 (2019: £1,841 deficit).

The income (before gift aid) for the current year decreased by £3,107 versus 2019, with higher donations in 2020 partially offsetting the non-repeat of the Joseph Rank Trust grant received in 2019.

Excluding the contribution to Amaudo HQ as mentioned above, expenditure has remained fairly flat with a slight decrease of £7,607 versus 2019. This is mainly due to a decrease in payroll during the year) and lower travel costs.