

# Brookfield

# Spaceplace



## Annual Report 2021-2022

May 2022

## **BROOKFIELD SPACEPLACE**

The following is a brief report on activities undertaken by Brookfield Spaceplace from Soundskills during what was still a very disturbed year due to the pandemic.

We have endeavoured to work remotely where we can but it has severely hampered the effectiveness of our creative support work. However the variation of our activities has meant that we have connected with new people on the estate.

### **Self help groups & individual support**



**ABSOLUTELY EVERYBODY** - Once the lockdown lifted the group slowly reformed but we limited numbers and the type of activities that we did with them. Some parents kept their children away from the group as they had concerns for their safety following the pandemic. We're hoping this will ease in time. We started a kids clothes bank too.



**ARTS GROUP** - The arts group has done some small group sessions since lockdown and they're getting their mojo back. Recent work has included some great painting around the theme of seasons.







MAKER SPACE - A number of residents have been working on glasswork and the 3D printer has been in operation. We're looking to develop some jewellery making techniques which include these processes and recycled cutlery manipulation.



MONDAY MUSIC & SINGING GROUP - The fact that the studio was so confined has meant that it only really got going till later in the year. However they have been slowly building on numbers again and starting to create more material. By it's nature of the singing group suffered a similar fate.

INDIVIDUALS - we continued to help 1 to 1 with peoples CVs, support with form filling and online conversations to keep in contact with residents where we could.

### **Student support**

REFERRALS - Numbers this year we're smaller as some of our educational establishments were slow to reopen. One individual came from a new support venue though so that was good news - we plan to look for other venues too. We're hoping that next year things will have settled more and we can get back to normal.



## Events & social/leisure activities

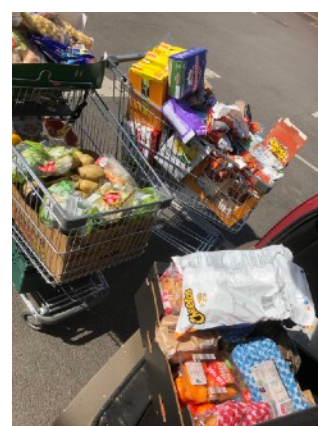
SOCIALS - we didn't do any live events during the year for obvious reasons but we did a number of remote performances that we live streamed. This could be useful as an option even when we can gather more people at live events as it is quicker to put together.



## Projects & wider activity

FOOD SUPPORT - Throughout the year we continued to hand out of food from Soundskills where we could. The Recycling Lives supply dwindled so we got it from some local supermarkets, local donations and bought through financial donations.

These are obviously only short term solutions and we are in conversation with or groups i the city to see how food poverty can be addressed going forward.



REMOTE 24.7.LIFE - The digital pioneer continued with a resident to create a mental health board game. Based on his experiences on his mental health journey the idea of the game is that it enables service users in a similar situation to be able to reflect on his experiences and consider the choices that they might make going forward. So we're hoping that this will become a useful tool to explore mental health with other people on the estate.



TECHCARE - Soundskills was able to continue its representation on the school governing board this year once again by attending meetings. Helping the school to navigate the transition in and out of lockdown and in particular support year 6 children with their transition to high school. This included support with their STEM day where we ran a science technology engineering and maths day at the primary school. Aimed at increasing year sixes aspirations towards different types of technological employment and green jobs. The activities included looking at how different types of technology are used in everyday life now and the changes that have occurred in industry over the last 60 years - focusing on the energy the lines need to work or tools used. The children were asked to design a monorail system that might get us from here to the Redscar estate in the future. As a part of the work we're looking at how we might adapt the school house environmentally.



12 YEAR CULTURAL STRATEGY - We were a part of the group developing Prestons cultural strategy. Shaping the creative sector in Preston over the next 12 years. Taking us up to the next Guild.

JAZZ FILM - We worked with local people to create a film about improvisation in their everyday life and their relationship with jazz music.

REPAIRS - We managed to get a new kitchen built by Community Gateway as a part of improvements we want to do to the building.



COMMUNITY CHAMPIONS - We created a series of films in August where we are interviewing various members of the South Asian community in Preston to see how the pandemic has impacted on them. Volunteers from here helped with the production and they were shown at the Mela



LITTER PICK - following the request of a local resident Linda, we did a 'litter pick' in conjunction with Gateway on Saturday 26th June 10am. Picking litter around the shops area front & back, the central green, the park and nearby hedgerows. We'll also filled some hanging baskets and arranging for any fly tipping to be removed.

LISTENIN - As a part of our project to find out how local people are doing post-pandemic we have started a series of podcasts listening to how residents including young people are getting on. We plan to do these as a regular ongoing activity. Potentially developing into an online archive & radio station.

### **In the pipeline**

MELA - in June we will be showcasing a number of films that we have been working on with volunteers. The sessions have involved our art group where we enabled them to work with as Asian artist. And groups from the nearby Asian community of Deepdale. This has been an opportunity to mix up the cultures and help with cohesion in the city.



## Conclusion

The management committee, practitioners and volunteers continue to be very committed to creatively helping people on the estate and wider Brookfield area. Post pandemic we've reflected on what we do and have thought about where we are heading. The hope is to think more strategically - developing a retrofit project (the fitting of clean solar energy to houses) with Gateway that might help with local employment and we're perusing conversations about a Care Cooperative on the estate.

## Brookfield Spaceplace Balance Sheet - April 2021 - March 2022

### BROOKFIELD SPACEPLACE BALANCE SHEET

#### APRIL 2021 - MARCH 2022

opening balance **£24,305.00**

#### EXPENDITURE

professional fees	13,356.00
insurance	1,356.00
custodian security	438.00
gas	731.00
electric	1,428.00
water	344.00
phone/broadband	720.00
waste removal	1,159.00
building repairs	1,657.00
licences	159.00
equipment - material	2,348.00
equipment - fixtures	22,776.00
equipment - activities	394.00
hospitality	321.00
publicity/newsletter	292.00
training	12.00
stationery/consumables	159.00

**TOTAL** **£47,650.00**

#### INCOME

rent and insurance (alison)	3,280.00
rent and insurance (whitelab)	2,575.00
grants	57,175.00
gas & electric refunds	286.00
sundry items	145.00

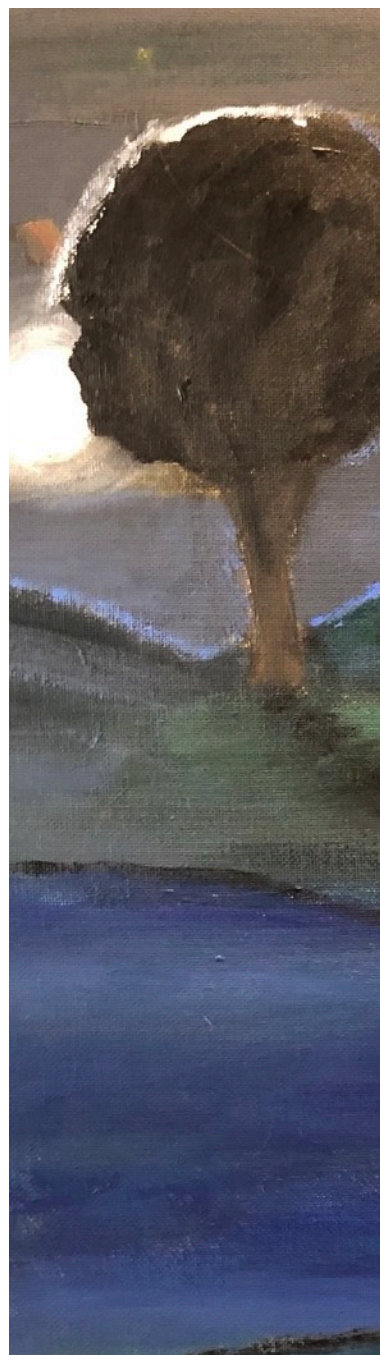
**TOTAL** **£63,461.00**

closing balance **£40,116.00**

#### grants

Preston City Council (SS Activities)	13,972.00
Lawrence Hunt (singing)	500.00
VMO2 Together Fund (neighbourly)	1,000.00
Community Gateway (uniform)	500.00
Clothworkers (studio refurb)	23,000.00
Co-operative (makerspace)	738.00
Uclan (mapping)	9,990.00
Community Fund (techcare)	6,875.00
Community Gateway (youth work)	600.00

**TOTAL** **£57,175.00**



## **BROOKFIELD SPACEPLACE BALANCE SHEET**

**APRIL 2021 - MARCH 2022**

**opening balance** **£24,305.00**

### **EXPENDITURE**

professional fees	13,356.00
insurance	1,356.00
custodian security	438.00
gas	731.00
electric	1,428.00
water	344.00
phone/broadband	720.00
waste removal	1,159.00
building repairs	1,657.00
licences	159.00
equipment - material	2,348.00
equipment - fixtures	22,776.00
equipment - activities	394.00
hospitality	321.00
publicity/newsletter	292.00
training	12.00
stationery/consumables	159.00

**TOTAL** **£47,650.00**

### **INCOME**

rent and insurance (alison)	3,280.00
rent and insurance (whitelab)	2,575.00
grants	57,175.00
gas & electric refunds	286.00
sundry items	145.00

**TOTAL** **£63,461.00**

**closing balance** **£40,116.00**

### **grants**

Preston City Council (SS Activities)	13,972.00
Lawrence Hunt (singing)	500.00
VMO2 Together Fund (neighbourly)	1,000.00
Community Gateway (uniform)	500.00
Clothworkers (studio refurb)	23,000.00
Co-operative (makerspace)	738.00
Uclan (mapping)	9,990.00
Community Fund (techcare)	6,875.00
Community Gateway (youth work)	600.00

**TOTAL** **£57,175.00**



## SP 2021-2022

## expenditure

	april	may	june	july	aug	sept	oct	nov	dec	jan	feb	mar	item totals
net salaries	0	0	0	0	0	0	0	0	0	0	0	0	0
tax & NI contributions	0	0	0	0	0	0	0	0	0	0	0	0	0
professional fees	1140	500	0	1800	500	3621	0	1635	1105	0	680	2375	13356
insurance	113	113	113	113	113	113	113	113	113	113	113	113	1356
custodian security	0	438	0	0	0	0	0	0	0	0	0	0	438
gas	118	82	67	7	3	4	4	41	83	108	112	102	731
electric	714	0	0	167	0	149	0	0	0	142	0	256	1428
water	77	0	0	49	0	87	0	0	0	57	74	0	344
phone/broadband	60	60	60	60	60	60	60	60	60	60	60	60	720
waste removal	570	0	0	0	0	0	0	0	0	0	0	589	1159
building maintenance	0	0	0	0	0	0	0	0	0	0	0	0	0
building repairs	220	0	0	0	0	259	0	0	0	0	461	717	1657
licences	0	0	0	159	0	0	0	0	0	0	0	0	159
equipment - material	12	0	0	470	0	583	0	707	0	0	0	576	2348
equipment - fixtures	211	0	0	0	0	13103	8386	401	0	225	450	0	22776
equipment - activities	0	0	0	211	0	0	0	0	0	0	183	0	394
hospitality	106	0	0	26	0	47	0	72	0	0	70	0	321
volunteer expenses	0	0	0	0	0	0	0	0	0	0	0	0	0
publicity/newsletter	245	0	0	0	0	0	0	0	0	47	0	0	292
travel	0	0	0	0	0	0	0	0	0	0	0	0	0
postage	0	0	0	0	0	0	0	0	0	0	0	0	0
training	12	0	0	0	0	0	0	0	0	0	0	0	12
stationery/consumables	0	0	0	0	0	124	0	35	0	0	0	0	159
hire charges	0	0	0	0	0	0	0	0	0	0	0	0	0
miscellaneous	0	0	0	0	0	0	0	0	0	0	0	0	0
<b>expend totals</b>	<b>3598</b>	<b>1193</b>	<b>240</b>	<b>3062</b>	<b>676</b>	<b>18150</b>	<b>8563</b>	<b>3064</b>	<b>1361</b>	<b>752</b>	<b>2203</b>	<b>4788</b>	<b>47650</b>

## income

grant	0	13972	1000	0	500	23000	0	738	0	145	0	6875	46230
grant	0	500	0	0	0	0	0	0	0	0	0	600	1100
grant	0	0	0	0	0	0	0	0	0	0	0	9990	9990
grant	0	0	0	0	0	0	0	0	0	0	0	0	0
sundry earnings	0	400	0	0	1011	0	1234	673	0	120	120	120	3678
sundry earnings	0	325	0	0	69	0	86	47	0	0	480	450	1457
sundry earnings	0	0	0	0	286	0	0	0	0	0	720	0	1006
<b>income totals</b>	<b>0</b>	<b>15197</b>	<b>1000</b>	<b>0</b>	<b>1866</b>	<b>23000</b>	<b>1320</b>	<b>1458</b>	<b>0</b>	<b>265</b>	<b>1320</b>	<b>18035</b>	<b>63461</b>
<b>net cash flow</b>	<b>-3598</b>	<b>14004</b>	<b>760</b>	<b>-3062</b>	<b>1190</b>	<b>4850</b>	<b>-7243</b>	<b>-1606</b>	<b>-1361</b>	<b>-487</b>	<b>-883</b>	<b>13247</b>	
opening balance	24305	20707	34711	35471	32409	33599	38449	31206	29600	28239	27752	26869	
<b>closing balance</b>	<b>20707</b>	<b>34711</b>	<b>35471</b>	<b>32409</b>	<b>33599</b>	<b>38449</b>	<b>31206</b>	<b>29600</b>	<b>28239</b>	<b>27752</b>	<b>26869</b>	<b>40116</b>	

# SP April 2021-22 RECEIPT RECORD

date	chq or rec No's	item or service description	project	debit	credit
			urban influence		
			<b>sub totals</b>	<b>0.00</b>	<b>0.00</b>
			SS Services		
			<b>sub totals</b>	<b>0.00</b>	<b>0.00</b>
31-Mar	MOB - 10585	hospitality - fareshare	listen & support	50.00	
31-Mar	MOB - inv 732	newsletter	listen & support	245.00	
31-Mar	MOB - inv 732	professional fees	listen & support	1140.00	
8th	MOB - inv 733	equipment - materials	listen & support	11.98	
8th	MOB - inv 733	equipment - fixtures	listen & support	211.19	
8th	MOB - inv 736	hospitality	listen & support	55.92	
8th	MOB - inv 736	training	listen & support	12.00	
			<b>sub totals</b>	<b>1726.09</b>	<b>0.00</b>
			makerspace		
			<b>sub totals</b>	<b>0.00</b>	<b>0.00</b>
18-Mar	MOB - 6350379	water	unrestricted	76.78	
1st	dd	insurance	unrestricted	113.05	
1st	dd	electric	unrestricted	714.43	
1st	MOB - 02005236	waste removal	unrestricted	569.92	
8th	MOB - inv 735	building repairs	unrestricted	220.00	
19th	dd - 1011847	gas	unrestricted	117.44	
28th	dd - 110276401	phone	unrestricted	60.00	
			<b>sub totals</b>	<b>1871.62</b>	<b>0.00</b>
		previous opening balance	24304.61		
		minus total expenditure	3597.71		
		plus total income	0.00		
		new opening balance	<b>20706.90</b>		

in bank figure

balance = 20706.90



# SP May 2021-22 RECEIPT RECORD

date	chq or rec No's	item or service description	project	debit	credit
			urban influence		
			<b>sub totals</b>	<b>0.00</b>	<b>0.00</b>
2nd	MOB - 00008	professional fees	SS Services	375.00	
			<b>sub totals</b>	<b>375.00</b>	<b>0.00</b>
			listen & support		
			<b>sub totals</b>	<b>0.00</b>	<b>0.00</b>
			makerspace		
			<b>sub totals</b>	<b>0.00</b>	<b>0.00</b>
4th	bacs	grant - PCC	ss activities		13972.00
			<b>sub totals</b>	<b>0.00</b>	<b>13972.00</b>
14th	bacs	grant - lawrence hunt	lawrence hunt		500.00
			<b>sub totals</b>	<b>0.00</b>	<b>500.00</b>
21-Jan	MOB - 202290	custodian insurance	unrestricted	438.00	
25-Apr	MOB - 025	professional fees	unrestricted	125.00	
5th	dd	insurance	unrestricted	113.05	
10th	bacs	whitelab rent 20/21	unrestricted		85.00 (inv 364)
10th	bacs	whitelab rent 21/22	unrestricted		224.00 (inv 378)
10th	bacs	whitelab insurance 21/22	unrestricted		16.00 (inv 379)
10th	bacs	alison rent 21/22	unrestricted		37.00 (inv 352)
10th	bacs	alison insurance 21/22	unrestricted		3.00 (inv 353)
10th	bacs	alison rent 21/22	unrestricted		337.00 (inv 376)
10th	bacs	alison insurance 21/22	unrestricted		23.00 (inv 377)
19th	dd - 1034836	gas	unrestricted	81.52	
28th	dd - 110276401	phone	unrestricted	60.00	
			<b>sub totals</b>	<b>817.57</b>	<b>725.00</b>
		previous opening balance	20706.90		
		minus total expenditure	1192.57		
		plus total income	15197.00		
		new opening balance	<b>34711.33</b>		
		in bank figure	34711.33		
		balance =	0.00		

# SP June 2021-22 RECEIPT RECORD

date	chq or rec No's	item or service description	project	debit	credit
			urban influence		
			<b>sub totals</b>	<b>0.00</b>	<b>0.00</b>
			SS Services		
			<b>sub totals</b>	<b>0.00</b>	<b>0.00</b>
			listen & support		
			listen & support		
			<b>sub totals</b>	<b>0.00</b>	<b>0.00</b>
			makerspace		
			makerspace		
			<b>sub totals</b>	<b>0.00</b>	<b>0.00</b>
			ss activities		
			ss activities		
			<b>sub totals</b>	<b>0.00</b>	<b>0.00</b>
			lawrence hunt		
			lawrence hunt		
			<b>sub totals</b>	<b>0.00</b>	<b>0.00</b>
26th	bacs	grant - VMO2 together fund	neighbourly		1000.00
			<b>sub totals</b>	<b>0.00</b>	<b>1000.00</b>
1st	dd	insurance	unrestricted	113.05	
16th	dd - 1049256	gas	unrestricted	67.14	
28th	dd - 110276401	phone	unrestricted	60.00	
			<b>sub totals</b>	<b>240.19</b>	<b>0.00</b>
		previous opening balance	34711.33		
		minus total expenditure	240.19		
		plus total income	1000.00		
		new opening balance	<b>35471.14</b>		
		in bank figure	35471.14		
		balance =	0.00		



# SP July 2021-22 RECEIPT RECORD

date	chq or rec No's	item or service description	project	debit	credit
			urban influence		
			<b>sub totals</b>	<b>0.00</b>	<b>0.00</b>
			SS Services		
			<b>sub totals</b>	<b>0.00</b>	<b>0.00</b>
30-Jun	MOB inv 743	professional fees	listen & support	1800.00	
30-Jun	MOB inv 743	equipment - activities	listen & support	211.05	
30-Jun	MOB inv 743	equipment - materials	listen & support	454.47	
			<b>sub totals</b>	<b>2465.52</b>	<b>0.00</b>
			makerspace		
			<b>sub totals</b>	<b>0.00</b>	<b>0.00</b>
			ss activities		
			<b>sub totals</b>	<b>0.00</b>	<b>0.00</b>
			lawrence hunt		
			<b>sub totals</b>	<b>0.00</b>	<b>0.00</b>
30-Jun	MOB inv 743	equipment - materials	neighbourly	15.49	
30-Jun	MOB inv 743	refreshments	neighbourly	26.35	
			<b>sub totals</b>	<b>41.84</b>	<b>0.00</b>
29-May	MOB - 6558216	water	unrestricted	49.11	
1st	dd	insurance	unrestricted	113.05	
4th	MOB	tv licence	unrestricted	159.00	
12th	dd	electric	unrestricted	167.21	
16th	dd - 1065390	gas	unrestricted	6.76	
28th	dd - 0721	phone	unrestricted	60.00	
			<b>sub totals</b>	<b>555.13</b>	<b>0.00</b>
		previous opening balance	35471.14		
		minus total expenditure	3062.49		
		plus total income	0.00		
		new opening balance	<b>32408.65</b>		
		in bank figure	32408.65		
		balance =	0.00		

# SP August 2021-22 RECEIPT RECORD

date	chq or rec No's	item or service description	project	debit	credit
			urban influence		
			<b>sub totals</b>	<b>0.00</b>	<b>0.00</b>
			SS Services		
			<b>sub totals</b>	<b>0.00</b>	<b>0.00</b>
10th	MOB - INV00034	professional fees	listen & support	500.00	
			<b>sub totals</b>	<b>500.00</b>	<b>0.00</b>
			makerspace		
			<b>sub totals</b>	<b>0.00</b>	<b>0.00</b>
			ss activities		
			<b>sub totals</b>	<b>0.00</b>	<b>0.00</b>
			lawrence hunt		
			<b>sub totals</b>	<b>0.00</b>	<b>0.00</b>
			neighbourly		
			<b>sub totals</b>	<b>0.00</b>	<b>0.00</b>
6th	bacs	grant - community gateway	gateway		500.00
			<b>sub totals</b>	<b>0.00</b>	<b>500.00</b>
2nd	dd	insurance	unrestricted	113.05	
20th	bacs	electric	unrestricted		286.87
23rd	dd - 1100041	gas	unrestricted	3.09	
24th	bacs	alison rent 21/22	unrestricted		1011.00 (inv 382)
24th	bacs	alison insurance 21/22	unrestricted		69.00 (inv383)
31st	dd - 0821	phone	unrestricted	60.00	
			<b>sub totals</b>	<b>176.14</b>	<b>1366.87</b>
		previous opening balance	32408.65		
		minus total expenditure	676.14		
		plus total income	1866.87		
		new opening balance	<b>33599.38</b>		
		in bank figure	33599.38		
		balance =	0.00		



# SP September 2021-22 RECEIPT RECORD

date	chq or rec No's	item or service description	project	debit	credit
			urban influence		
			<b>sub totals</b>	<b>0.00</b>	<b>0.00</b>
			SS Services		
			<b>sub totals</b>	<b>0.00</b>	<b>0.00</b>
1st	MOB - inv 746	professional fees	listen & support	2151.31	
1st	MOB - inv 746	equipment - materials	listen & support	195.92	
28th	MOB - inv 748	hospitality	listen & support	38.70	
			listen & support		
			<b>sub totals</b>	<b>2385.93</b>	<b>0.00</b>
			makerspace		
			<b>sub totals</b>	<b>0.00</b>	<b>0.00</b>
17th	MOB - inv 000035	professional fees	ss activities	450.00	
28th	MOB - inv 748	professional fees	ss activities	1020.00	
29th	MOB - inv 000035	equipment - materials	ss activities	82.82	
			ss activities		
			<b>sub totals</b>	<b>1552.82</b>	<b>0.00</b>
			lawrence hunt		
			<b>sub totals</b>	<b>0.00</b>	<b>0.00</b>
1st	MOB - inv 746	hospitality	neighbourly	8.17	
1st	MOB - inv 746	equipment - materials	neighbourly	27.54	
			<b>sub totals</b>	<b>35.71</b>	<b>0.00</b>
1st	MOB - inv 746	equipment - materials	gateway	8.97	
28th	MOB - inv 748	equipment - materials	gateway	267.84	
28th	MOB - inv 748	stationary	gateway	124.00	
			<b>sub totals</b>	<b>400.81</b>	<b>0.00</b>
1st	bacs	grant - clothworkers	clothworkers		23000.00
21st	MOB - 17256	equipment - fixtures	clothworkers	10376.16	
21st	MOB - 066756	equipment - fixtures	clothworkers	581.00	
28th	MOB - 8422-1525/00	equipment - fixtures	clothworkers	1079.66	
28th	MOB - M7313789	equipment - fixtures	clothworkers	1065.99	
			<b>sub totals</b>	<b>13102.81</b>	<b>23000.00</b>
1st	dd	insurance	unrestricted	113.05	
8th	MOB - 6821127	water	unrestricted	86.74	
17th	dd - 1115783	gas	unrestricted	3.62	
27th	dd	electric	unrestricted	149.16	
28th	dd - 0921	phone	unrestricted	60.00	
28th	MOB - inv 748	buildng repairs	unrestricted	259.00	
			<b>sub totals</b>	<b>671.57</b>	<b>0.00</b>
		previous opening balance	33599.38		
		minus total expenditure	18149.65		
		plus total income	23000.00		
		new opening balance	<b>38449.73</b>		
		in bank figure	38449.73		
		balance =	0.00		

# SP October 2021-22 RECEIPT RECORD

date	chq or rec No's	item or service description	project	debit	credit
			urban influence		
			<b>sub totals</b>	<b>0.00</b>	<b>0.00</b>
			SS Services		
			<b>sub totals</b>	<b>0.00</b>	<b>0.00</b>
			listen & support		
			<b>sub totals</b>	<b>0.00</b>	<b>0.00</b>
			makerspace		
			<b>sub totals</b>	<b>0.00</b>	<b>0.00</b>
			ss activities		
			<b>sub totals</b>	<b>0.00</b>	<b>0.00</b>
			lawrence hunt		
			<b>sub totals</b>	<b>0.00</b>	<b>0.00</b>
			neighbourly		
			<b>sub totals</b>	<b>0.00</b>	<b>0.00</b>
			gateway		
			<b>sub totals</b>	<b>0.00</b>	<b>0.00</b>
28-Sep	MOB - 3785563	equipment - fixtures	clothworkers	6185.00	
1st	MOB - 202139	equipment - fixtures	clothworkers	1060.00	
4th	MOB - M7333182	equipment - fixtures	clothworkers	488.00	
4th	MOB - 17570	equipment - fixtures	clothworkers	144.00	
9th	MOB - 000239	equipment - fixtures	clothworkers	329.40	
14th	MOB - 000240	equipment - fixtures	clothworkers	118.78	
19th	MOB - 000241	equipment - fixtures	clothworkers	61.10	
			<b>sub totals</b>	<b>8386.28</b>	<b>0.00</b>
1st	dd	insurance	unrestricted	113.05	
6th	bacs	alison rent 21/22	unrestricted		674.00
6th	bacs	alison insurance 21/22	unrestricted		46.00
8th	bacs	whitelab rent 21/22	unrestricted		336.00
8th	bacs	whitelab insurance 21/22	unrestricted		24.00
8th	bacs	whitelab rent 21/22	unrestricted		224.00
8th	bacs	whitelab insurance 21/22	unrestricted		16.00
19th	dd - 1136717	gas	unrestricted	3.62	
28th	dd - 1021	phone	unrestricted	60.00	
			<b>sub totals</b>	<b>176.67</b>	<b>1320.00</b>
		previous opening balance	38449.73		
		minus total expenditure	8562.95		
		plus total income	1320.00		
		new opening balance	<b>31206.78</b>		
		in bank figure	31206.78		
		balance =	0.00		

# SP November 2021-22 RECEIPT RECORD

date	chq or rec No's	item or service description	project	debit	credit
			urban influence		
			<b>sub totals</b>	<b>0.00</b>	<b>0.00</b>
			SS Services		
			<b>sub totals</b>	<b>0.00</b>	<b>0.00</b>
3rd	MOB - inv 757	professional fees	listen & support	675.00	
3rd	MOB - inv 757	equipment - materials	listen & support	184.95	
3rd	MOB - inv 757	hospitality	listen & support	72.23	
			<b>sub totals</b>	<b>932.18</b>	<b>0.00</b>
5th	bacs	grant - cooperative	makerspace		737.73
			<b>sub totals</b>	<b>0.00</b>	<b>737.73</b>
3rd	MOB - inv 757	professional fees	ss activities	960.00	
3rd	MOB - inv 757	equipment - materials	ss activities	522.67	
			<b>sub totals</b>	<b>1482.67</b>	<b>0.00</b>
			lawrence hunt		
			<b>sub totals</b>	<b>0.00</b>	<b>0.00</b>
			neighbourly		
			<b>sub totals</b>	<b>0.00</b>	<b>0.00</b>
			gateway		
			<b>sub totals</b>	<b>0.00</b>	<b>0.00</b>
08-Oct	3698	equipment - fixtures	clothworkers	43.50	
20-Oct	2326	equipment - fixtures	clothworkers	35.62	
26-Oct	241410	equipment - fixtures	clothworkers	82.14	
26-Oct	698015	equipment - fixtures	clothworkers	28.00	
26-Oct	6813A	equipment - fixtures	clothworkers	16.00	
1st	397878	equipment - fixtures	clothworkers	29.95	
2nd	19131	equipment - fixtures	clothworkers	11.80	
4th	961837	equipment - fixtures	clothworkers	29.95	
8th	78115	equipment - fixtures	clothworkers	14.00	
12th	MOB - inv 242	equipment - fixtures	clothworkers	110.03	
			<b>sub totals</b>	<b>400.99</b>	<b>0.00</b>
1st	dd	insurance	unrestricted	113.05	
3rd	H3290209	consumables	unrestricted	34.85	
4th	bacs	whitelab rent 21/22	unrestricted		224.00 (Inv 400)
4th	bacs	whitelab insurance 21/22	unrestricted		16.00 (Inv 401)
4th	bacs	whitelab rent 21/22	unrestricted		112.00 (inv 396)
4th	bacs	whitelab insurance 21/22	unrestricted		8.00 (inv 397)
8th	bacs	alison rent 21/22	unrestricted		337.00 (inv 394)
8th	bacs	alison insurance 21/22	unrestricted		23.00 (inv 395)
18th	dd - 1152292	gas	unrestricted	40.68	
29th	dd - 1121	phone	unrestricted	60.00	
			<b>sub totals</b>	<b>248.58</b>	<b>720.00</b>
		previous opening balance	31206.78		
		minus total expenditure	3064.42		
		plus total income	1457.73		
		new opening balance	<b>29600.09</b>		
		in bank figure	29600.09		
		balance =	0.00		

# SP December 2021-22 RECEIPT RECORD

date	chq or rec No's	item or service description	project	debit	credit
			urban influence		
			<b>sub totals</b>	<b>0.00</b>	<b>0.00</b>
			SS Services		
			<b>sub totals</b>	<b>0.00</b>	<b>0.00</b>
			listen & support		
			<b>sub totals</b>	<b>0.00</b>	<b>0.00</b>
7th	MOB - Inv 760	professional fees	makerspace	935.00	
			<b>sub totals</b>	<b>935.00</b>	<b>0.00</b>
18th	MOB - inv 00003	professional fees	ss activities	170.00	
			<b>sub totals</b>	<b>170.00</b>	<b>0.00</b>
			lawrence hunt		
			<b>sub totals</b>	<b>0.00</b>	<b>0.00</b>
			neighbourly		
			<b>sub totals</b>	<b>0.00</b>	<b>0.00</b>
			gateway		
			<b>sub totals</b>	<b>0.00</b>	<b>0.00</b>
			clothworkers		
			<b>sub totals</b>	<b>0.00</b>	<b>0.00</b>
1st	dd	insurance	unrestricted	113.05	
16th	dd - 1171202	gas	unrestricted	82.88	
29th	dd - 1221	phone	unrestricted	60.00	
			<b>sub totals</b>	<b>255.93</b>	<b>0.00</b>
		previous opening balance	29600.09		
		minus total expenditure	1360.93		
		plus total income	0.00		
		<b>new opening balance</b>	<b>28239.16</b>		
		in bank figure	28239.16		
		balance =	0.00		



# SP January 2021-22 RECEIPT RECORD

date	chq or rec No's	item or service description	project	debit	credit
			urban influence		
			<b>sub totals</b>	<b>0.00</b>	<b>0.00</b>
			SS Services		
			<b>sub totals</b>	<b>0.00</b>	<b>0.00</b>
			listen & support		
			<b>sub totals</b>	<b>0.00</b>	<b>0.00</b>
			makerspace		
			<b>sub totals</b>	<b>0.00</b>	<b>0.00</b>
			ss activities		
			<b>sub totals</b>	<b>0.00</b>	<b>0.00</b>
			lawrence hunt		
			<b>sub totals</b>	<b>0.00</b>	<b>0.00</b>
			neighbourly		
			<b>sub totals</b>	<b>0.00</b>	<b>0.00</b>
			gateway		
			<b>sub totals</b>	<b>0.00</b>	<b>0.00</b>
15-Dec	3174	equipment - fixtures	clothworkers	7.60	
29-Dec	71622	equipment - fixtures	clothworkers	84.95	
1st	2160	equipment - fixtures	clothworkers	91.00	
2nd	2261	equipment - fixtures	clothworkers	42.00	
20th	bacs	refund - equipment	clothworkers		145.00
			<b>sub totals</b>	<b>225.55</b>	<b>145.00</b>
12-Nov	MOB - 6980728	water	unrestricted	57.46	
1st	dd	insurance	unrestricted	113.05	
5th	MOB - inv 0003	publicity	unrestricted	46.62	
6th	dd	electric	unrestricted	142.02	
10th	bacs	whitelab rent 21/22	unrestricted		112.00 (inv 408)
10th	bacs	whitelab insurance 21/22	unrestricted		8.00 (inv 409)
17th	dd - 1185084	gas	unrestricted	107.65	
28th	dd - 0122	phone	unrestricted	60.00	
			<b>sub totals</b>	<b>526.80</b>	<b>120.00</b>
		previous opening balance	28239.16		
		minus total expenditure	752.35		
		plus total income	265.00		
		new opening balance	<b>27751.81</b>		
		in bank figure	27751.81		
		balance =	0.00		

# SP February 2021-22 RECEIPT RECORD

date	chq or rec No's	item or service description	project	debit	credit
			urban influence		
			<b>sub totals</b>	<b>0.00</b>	<b>0.00</b>
			SS Services		
			<b>sub totals</b>	<b>0.00</b>	<b>0.00</b>
20th	MOB - inv 760	hospitality	listen & support	69.72	
20th	MOB - inv 760	equipment - fixtures	listen & support	36.00	
20th	MOB - inv 760	equipment - activities	listen & support	123.40	
			<b>sub totals</b>	<b>229.12</b>	<b>0.00</b>
			makerspace		
			<b>sub totals</b>	<b>0.00</b>	<b>0.00</b>
26-Jan	MOB - inv 0004	professional fees	ss activities	425.00	
20th	MOB - inv 760	equipment - activities	ss activities	59.29	
22nd	MOB - inv 0005	professional fees	ss activities	255.00	
			<b>sub totals</b>	<b>739.29</b>	<b>0.00</b>
			lawrence hunt		
			<b>sub totals</b>	<b>0.00</b>	<b>0.00</b>
			neighbourly		
			<b>sub totals</b>	<b>0.00</b>	<b>0.00</b>
			gateway		
			<b>sub totals</b>	<b>0.00</b>	<b>0.00</b>
8th	MOB - 3785563	equipment - fixtures	clothworkers	<b>414.00</b>	
			<b>sub totals</b>	<b>414.00</b>	<b>0.00</b>
1st	dd	insurance	unrestricted	113.05	
12th	MOB - 7218347	water	unrestricted	74.13	
14th	dd - 1205048	gas	unrestricted	112.25	
15th	bacs	whitelab rent 21/22	unrestricted		224.00 (inv 404)
15th	bacs	whitelab insurance 21/22	unrestricted		16.00 (inv 405)
20th	MOB - inv 760	building repairs	unrestricted	461.14	
23rd	bacs	whitelab rent 21/22	unrestricted		112.00 (inv 416)
23rd	bacs	whitelab insurance 21/22	unrestricted		8.00 (inv 417)
23rd	bacs	whitelab rent 21/22	unrestricted		224.00 (inv 412)
23rd	bacs	whitelab insurance 21/22	unrestricted		16.00 (inv 413)
23rd	bacs	alison rent 21/22	unrestricted		674.00 (inv 402)
23rd	bacs	alison insurance 21/22	unrestricted		46.00 (inv 403)
28th	dd - 0222	phone	unrestricted	60.00	
			<b>sub totals</b>	<b>820.57</b>	<b>1320.00</b>
		previous opening balance	27751.81		
		minus total expenditure	2202.98		
		plus total income	1320.00		
		new opening balance	<b>26868.83</b>		
		in bank figure	26868.83		
		balance =	0.00		

# SP March 2021-22 RECEIPT RECORD

date	chq or rec No's	item or service description	project	debit	credit
01-Dec	MOB - inv 007	professional fees	urban influence	100.00	
			<b>sub totals</b>	<b>100.00</b>	<b>0.00</b>
			SS Services		
			<b>sub totals</b>	<b>0.00</b>	<b>0.00</b>
			listen & support		
			<b>sub totals</b>	<b>0.00</b>	<b>0.00</b>
4th	MOB - inv 768	equipment - materials	makerspace	575.80	
			<b>sub totals</b>	<b>575.80</b>	<b>0.00</b>
1st	trans to unr - inv 244	professional fees	ss activities	450.00	
16th	MOB - 0006	professional fees	ss activities	425.00	
			<b>sub totals</b>	<b>875.00</b>	<b>0.00</b>
01-Dec	MOB - inv 007	professional fees	lawrence hunt	500.00	
			<b>sub totals</b>	<b>500.00</b>	<b>0.00</b>
			neighbourly		
			<b>sub totals</b>	<b>0.00</b>	<b>0.00</b>
			gateway		
			<b>sub totals</b>	<b>0.00</b>	<b>0.00</b>
			clothworkers		
			<b>sub totals</b>	<b>0.00</b>	<b>0.00</b>
4th	giro	grant - community fund	techcare		6875.00
17th	MOB - inv 769	professional fees	techcare	900.00	
			techcare		
			<b>sub totals</b>	<b>900.00</b>	<b>6875.00</b>
18th	giro	grant - community gateway	youth work		600.00
			youth work		
			<b>sub totals</b>	<b>0.00</b>	<b>600.00</b>
29th	bacs	grant - Uclan	mapping		9990.00
			<b>sub totals</b>	<b>0.00</b>	<b>9990.00</b>
1st	trans from ss acts	whitelab rent 20/21	unrestricted		38.50 (inv 366)
1st	trans from ss acts	whitelab rent 20/21	unrestricted		112.00 (inv 374)
1st	trans from ss acts	whitelab insurance 20/21	unrestricted		8.00 (inv 375)
1st	trans from ss acts	whitelab rent 21/22	unrestricted		224.00 (inv 380)
1st	trans from ss acts	whitelab insurance 21/22	unrestricted		16.00 (inv 381)
1st	trans from ss acts	whitelab insurance 21/22	unrestricted		24.00 (inv 387)
1st	trans from ss acts	whitelab rent 21/22	unrestricted		27.50 (inv 386)
1st	dd	insurance	unrestricted	113.05	
2nd	bacs	whitelab rent 21/22	unrestricted		112.00 (inv 416)
2nd	bacs	whitelab insurance 21/22	unrestricted		8.00 (inv 417)
4th	MOB - inv 768	building repairs	unrestricted	182.00	
14th	dd - 1218917	gas	unrestricted	101.76	
17th	MOB - inv 769	building repairs	unrestricted	534.73	
21st	dd	electric	unrestricted	256.36	
28th	dd - 001/0322	phone	unrestricted	60.00	
1st apr	MOB - 02041737	waste removal	unrestricted	588.64	
			<b>sub totals</b>	<b>1836.54</b>	<b>570.00</b>
		previous opening balance	26868.83		
		minus total expenditure	4787.34		
		plus total income	18035.00		
		new opening balance	<b>40116.49</b>		
		in bank figure	40116.49		
		balance =	0.00		

# **BROOKFIELD SPACEPLACE BALANCE SHEET**

**APRIL 2021 - MARCH 2022**

**opening balance** **£24,305.00**

## **EXPENDITURE**

professional fees	13,356.00
insurance	1,356.00
custodian security	438.00
gas	731.00
electric	1,428.00
water	344.00
phone/broadband	720.00
waste removal	1,159.00
building repairs	1,657.00
licences	159.00
equipment - material	2,348.00
equipment - fixtures	22,776.00
equipment - activities	394.00
hospitality	321.00
publicity/newsletter	292.00
training	12.00
stationery/consumables	159.00

**TOTAL** **£47,650.00**

## **INCOME**

rent and insurance (alison)	3,280.00
rent and insurance (whitelab)	2,575.00
grants	57,175.00
gas & electric refunds	286.00
sundry items	145.00

**TOTAL** **£63,461.00**

**closing balance** **£40,116.00**

## **grants**

Preston City Council (SS Activities)	13,972.00
Lawrence Hunt (singing)	500.00
VMO2 Together Fund (neighbourly)	1,000.00
Community Gateway (uniform)	500.00
Clothworkers (studio refurb)	23,000.00
Co-operative (makerspace)	738.00
Uclan (mapping)	9,990.00
Community Fund (techcare)	6,875.00
Community Gateway (youth work)	600.00

**TOTAL** **£57,175.00**





MRS D RAWSTHORNE

19 Woodside Avenue  
Ribbleton  
PRESTON  
PR2 6QQ

28<sup>th</sup> August 2022

**Brookfield Spaceplace**

**Accounts To Year End March 2022**

Having studied the accounts of the above mentioned organisation from April 1<sup>st</sup> 2021 to March 31<sup>st</sup> 2022, I can verify that they are a true record of the organisations income and expenditure between those periods and that the summary is an accurate representation of those transactions.

Yours faithfully



MRS D RAWSTHORNE