

Northern College of Acupuncture

College Annual Report for 2023-2024

Published October 2024

Northern College of Acupuncture
61 Micklegate
York YO1 6LJ
Tel: 01904 343305
Website: www.nca.ac.uk

Registered charity number 1081184



Contents

1	Executive Summary	3
2	Preface: The Purpose of the College Annual Report	6
3	Preface: The Requirements of the Professional Accrediting Bodies.....	6
	3.1 British Acupuncture Accreditation Board (BAAB)	6
	3.2 European Herbal and Traditional Medicine Practitioners Association	7
	3.3 Nutritional Therapy Education Commission	7
4	The College's Aims, Values and Charitable Objectives	8
5	Institutional Structure and Policy	10
	5.1 Nature of the Charity	10
	5.2 Organisational Structure – Boards and Committees	10
	5.3 The Board of Directors / Trustees	11
	5.4 Stakeholder Relationships.....	11
	5.5 Accrediting Organisations	12
6	Strategy Review	13
7	Financial Review	14
	7.1 Financial Strategy.....	14
8	Activities during the year in relation to our charitable objectives	16
	8.1 Education	16
	8.2 Clinical Services	23
	8.3 Research.....	23
	8.4 Publications and Presentations by Students and Alumni	25
	8.5 MSc Research Projects	27
9	Staff Development	28
10	Resources Statement.....	29
	10.1 Management and Administration	29
	10.2 Lecturer Colleagues	29
	10.3 Premises	29
	10.4 Accessibility	29
	10.5 Facilities Maintenance and Development.....	29
	10.6 Library, Learning and Online Resources	30
	Appendix A: NSS Results.....	32
	Appendix B: Staff Activities	34

1 Executive Summary

Strategy Review

The NCA strategy is committed to supporting the NCA Charitable Objectives. The strategy is also committed to the delivery of excellence, to drive reputational value and ensure long term financial sustainability.

The implementation of strategy in 2023-24 was limited by organisational issues including the imminent retirement of the longstanding Principal, changes in academic faculty and programme leadership, and personal stresses on key colleagues in administration and management.

Performance Review

Despite these challenges, the achievements of 2022-23 clearly demonstrate a highly committed and skilled staff base of academics, practitioners, and administrators.

UCO and AECC Merger

Since November 2021, the NCA academic programmes were validated by the University College of Osteopathy (UCO). However, on 1 August this year, the University College of Osteopathy (UCO) and the Anglo-European College of Chiropractic AECC) merged to become the Health Sciences University.

Arrangements are in place for the continued validation of NCA academic programmes by the HSU, with continuity of reporting documentation, the validation process, and relationships with (UCO) colleagues.

Academic Programmes

BSc Acupuncture:

In 2023-24, we recruited 33 new students onto the BSc Acupuncture programme, split across full time (21 students) and part time (12 students) study options.

We are pleased that 22 students will graduate with a BSc Acupuncture this autumn, with the opportunity to progress as clinical practitioners and/or academics.

MSc Nutrition Science and Practice

In 2023-24, we recruited 20 new students onto the Nutrition Access course, and we enrolled 15 students progressing from the Access course onto the MSc Nutrition Science and Practice programme.

We are pleased that 7 students will graduate with an MSc Nutrition Science and Practice this autumn, with the opportunity to progress as clinical practitioners and/or academics.

MSc Chinese Herbal Medicine

In 2023-24, we recruited 12 new students onto the MSc Chinese Herbal Medicine programme.

We are pleased that 3 students will graduate with an MSc Nutrition Science and Practice this autumn, with the opportunity to progress as clinical practitioners and/or academics.

NSS Student Feedback

The NSS survey is completed by all final year BSc Acupuncture students, giving valuable feedback on the quality of their academic programme and their overall experience as a student at NCA.

NCA students registered exceptionally high levels of satisfaction for the quality of teaching (98.21), learning opportunities (92.86), assessment and feedback (92.86) and academic support (92.86), but lower levels of satisfaction for organisation and management (67.86), learning resources (85.71) and student voice (71.43).

These NSS scores are consistently higher than the scores in 2023 and are above the healthcare sector average.

Student Outcomes

The Student Outcomes data measure institutional performance for student Continuation (with their qualification studies), Completion (of their qualification) and Progression (into professional employment or further studies).

The data is managed by the OfS and offers NCA performance data benchmarked with a minimum performance threshold, and an upper and lower percentage of statistical uncertainty. The available data presents the NCA position on Student Outcomes, between 2018-19 and 2021-22.

The BSc Acupuncture scores consistently higher than the OfS threshold for Continuation, Completion and Progression.

The MSc programmes (MSc Nutrition Science and Practice and MSc Chinese Herbal Medicine) both scored below the OfS threshold for Continuation and Progression, although this is due to the unreliability of the data generated by small student numbers.

Practitioner Hub

The Practitioner Hub enables members to engage in lectures, open discussion groups, CPD opportunities and closed supervision groups.

Following a drop in subscribing members, and a recent review of the positioning and value of the Hub, the Hub will now be restructured to deliver an enhanced value proposition for subscribing members. Following approval of the new structure and enhanced value proposition for members, the Hub will be relaunched in November 2024.

Research

Our Research Strategy delivers a strong research profile for NCA and is a significant contributor to our institutional reputation and the value of our qualifications. Currently, our status as an 'uncapped fee' provider with the OfS precludes us applying for research grants from UKRI and the Research Councils, and this limits our ability to develop high-impact research.

However, we are confident that we will be able to generate both commercial and academic research revenues from our research output, which is delivered by both staff and students. As such, we are keen to attract wider recognition for the quality and impact of our research, and to be involved in public and private funded research projects with a variety of stakeholders.

Our Clinical Outcomes Research and Audit project (CORA) gathers clinical outcomes data across the College's teaching clinics using the Measure Yourself Medical Outcomes Profile (MYMOP) questionnaire. This is shared

with the research organisation Meaningful Measures (which owns and administers MYMOP) as part of an aggregated dataset made available to researchers for investigation of the effectiveness of our therapies.

The NCA Support for Publication (SfP) programme supports undergraduate and postgraduate students to publish the results of their research. The package includes support from a supervisor and the Research Ethics Committee, plus a small grant from the College, using legacy funds from the Foundation for Research into Traditional Chinese Medicine (for all students, not only those studying a form of TCM) to cover the costs of writing-up and peer review.

Teaching Clinics

Three teaching clinics operate from the College: acupuncture, nutrition and Chinese herbal medicine. All clinics offer a high quality and professional service to the local community and beyond, at reduced rates. Patient surveys and feedback generally demonstrate a very high level of satisfaction including praise for the students, with occasional suggestions for improvement, which is acted on.

The Acupuncture clinics include the clinic in York, plus two new clinics that were opened in 2024, in Northwich, (southwest of Manchester) and Southwark in London. The Herbs clinic continues to run completely online, enabling patients to attend from all over the country. The Nutrition clinic remains a hybrid model where the supervisor and students are in York while clients can choose to attend in-person or online.

Our teaching clinics make an invaluable contribution to the training of our students as practitioners, and they enable us to meet one of our charitable objectives by providing treatment to members of the public with limited incomes.

Financial Review

The 2023-24 accounts show a deficit of 10.2% of the NCA annual income.

The accounts for the previous year 2022-23 showed a slim margin of profitability at 0.1% of the NCA annual income, indicating early signs of post-covid recovery.

The accounts for the previous year 2021-22 show a deficit of 5.0% of the NCA annual income, at a time when most businesses and organisations were also struggling with the financial impact of covid.

2 Preface: The Purpose of the College Annual Report

This report is agreed by the College's Board of Directors / Trustees at their Annual General Meeting. It then fulfils the following functions:

1. It is made available to the College's stakeholders, including staff, students and patients.
2. It is made available to the public by publication on our website.
3. It is submitted to the Charity Commission, for whom it addresses their requirement for an annual report.
4. It is submitted to our University Partner, for whom it addresses their requirement for a Resources Statement.
5. It is submitted to the Accreditation Committee of the British Acupuncture Accreditation Board, for whom it addresses their requirement for an annual resource report.
6. It is submitted to the Nutritional Therapy Education Commission, for whom it addresses their requirement for an annual resource report.
7. It is submitted to the Accreditation Board of the European Herbal and Traditional Medicine Practitioners' Association, for whom it addresses their requirement for an annual review report.

The College's Financial Statements are submitted to Companies House annually. They include the executive summary from this report.

The College's financial year runs from 1st July to 30th June. Those parts of this report which relate to academic matters apply to the academic year, which is taken to run from 1st August to 31st July.

3 Preface: The Requirements of the Professional Accrediting Bodies

3.1 British Acupuncture Accreditation Board (BAAB)

This report corresponds to the requirement for a financial report, which is ~~required~~ expected to include the following:

1. An account of actual expenditure deployed by the institution during the previous year to support student learning, e.g. resources spent on library, student IT access, classroom and clinic equipment
2. Detailed financial statement
3. Details of any current or future expenditure plans; commentary on any significant financial problems faced by the institution and / or programme, and how these are being addressed ([Strategy Review](#); [Financial Review](#);
4. Details of any changes that have taken place or are planned to take place in the staffing of the course, including the CVs of new staff
5. Details of any changes or planned changes in the physical location of the course

Details of any actual or planned changes in the clinical facilities available to staff or students or to the general public as patients

Details of any changes or planned changes in any other facilities and resources available to staff, students or patients.

3.2 European Herbal and Traditional Medicine Practitioners Association

This report corresponds to the requirement for an annual resource report, which is-to include the following:

1. Changes to institutional structure, personnel and roles
2. Examples of staff development undertaken by academic and clinical staff
3. Confirmation from the named correspondent that the course continues to be viable and that resources are available to underpin the continuation of the course for current and future student intakes (Section 6 Strategy Review; Section 7 Financial Review; Section 8 Strategic Planning; Appendix A: Financial Statements 2023-24)

3.3 Nutritional Therapy Education Commission

This report corresponds to the requirement for an annual resource report, which is to include the following:

1. A commentary on any significant financial problems faced by the institution and/or course and how these are being addressed, along with details of any current or future expenditure plans
2. Details of any current or future expenditure plans (Section 8 Strategic Planning)
3. Details of any changes that have taken place or are planned to take place in the staffing of the course, including the CVs of new staff (Appendix B Academic Programme Monitoring Reports for BSc Acupuncture; MSc/PGDip Nutrition Science and Practice; MSc/PGDip Chinese Herbal Medicine)
4. Details of any changes or planned changes in the physical location of the course
5. Details of any changes or planned changes in the clinical facilities available to staff or students or to the general public as patients
6. Details of any changes or planned changes in any other facilities and resources available to staff, students or patients
7. An account of actual expenditure deployed by the institution or faculty during the previous year to support student learning, e.g. resources spent on library, student IT access, classroom or clinic equipment
8. Detailed financial statement and any related reports, in keeping with Essential Requirement (Section 6 [Strategy Review](#); Section 7 [Financial Review](#))

4 The College's Aims, Values and Charitable Objectives

We aim to be a leading and pioneering establishment of educational excellence in the fields of traditional Chinese and Oriental medicine (acupuncture and herbal medicine) and nutrition, with a reputation for significant research activity.

Charitable Objectives

Our charitable objectives are:

- To provide education and promote high standards of practice in the science and art of acupuncture, traditional Chinese medicine and nutrition for the protection and benefit of the public, to be available to any suitably qualified person regardless of colour, class, race, religion, gender, sexual orientation or disability provided such disability is compatible with the provision of safe and effective treatment;
- To provide for, promote and engage in investigation and research into the science and art of acupuncture, traditional Chinese medicine and nutrition and to disseminate the results of research;
- To encourage the progress of and to improve standards of education and practice in acupuncture, Chinese medicine and nutrition by providing post-graduate education for practitioners;
- To provide education in and treatment with acupuncture, traditional Chinese medicine, nutrition and other complementary therapies at preferential charges for members of the public regardless of race, class, religion, gender, sexual orientation or disability where members of the public would otherwise be deprived of education and/or treatment by reason of financial hardship.

Values

We aim to be a person-centred, progressive, sustainable community embodying integrity and quality.

- **Person-centred:** Compassion and respect at the heart of everything we do.
- **Quality:** A centre of professional, clinical, educational and research excellence.
- **Progressive:** Striving to move forward and open to creative change, respecting traditional and modern approaches.
- **Sustainable:** Growing our future in a reflective, sustainable way: environmentally, clinically and financially.
- **Community:** Working with common goals and values, connected to wider communities.
- **Integrity:** Creating an open, honest, ethical and reflective environment.

We approach our work with:

- Encouragement for everyone to develop their own style of practice, drawing on a diverse repertoire of approaches and techniques.
- A combination of intellectual rigour and critical thinking with compassion, skill and the broad development of the practitioner.
- Mutual respect among all at the College.

We believe that:

- Chinese medicine and nutrition have the potential to heal and transform at all levels of body and mind.
- Students are our future and the future of the profession. They are at the centre of our work.
- The education of students and practitioners is a holistic activity, involving values, spirit, mind and body.
- Open-minded investigation and research by practitioners are essential to the future vitality of the traditions of Chinese medicine and nutrition.

- Learning is a life-long activity - we aim to foster an ethos of reflective and continuous professional development.

We serve students, staff, practitioners, patients and clients, and ultimately the general public, by providing an environment and ethos that promotes the study and practice of acupuncture, Chinese medicine and nutrition. To achieve this, we:

- Set high standards for clinical, academic and professional excellence, with robust quality assurance and strong academic support and pastoral care.
- Provide regular formative feedback to students and staff to enable continuing development and the confidence to practise in an effective, professional and reflective way.

5 Institutional Structure and Policy

5.1 Nature of the Charity

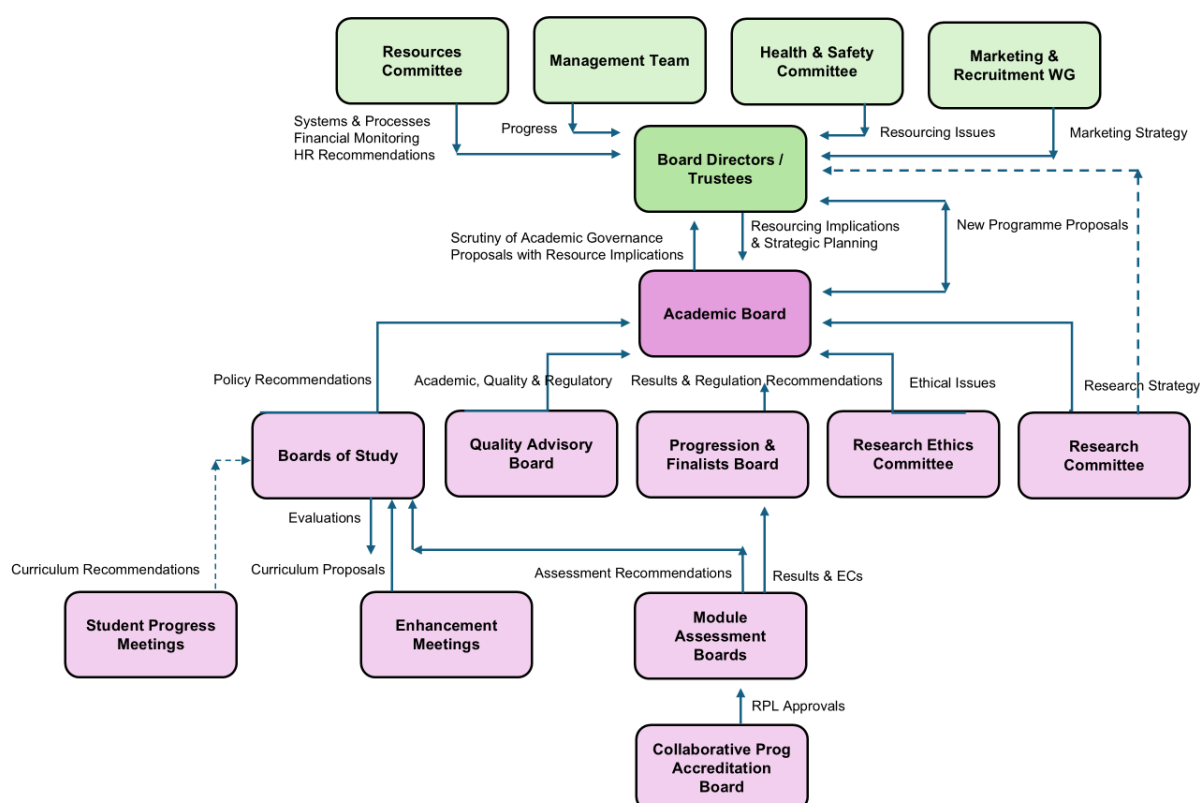
The College's governing document is its memorandum and articles of association. It is a limited company (2400056) and a registered charity (1081184).

The College is registered by the Office for Students (OfS), which is the regulatory body for Higher Education (HE) in England, established by Act of Parliament. All registered HE providers are regulated by the OfS and must meet a set of regulatory requirements. Registration confers access to student support funding for our students. Our provider number is 10004740.

The College's Trustees are also its Directors. The Chief Executive Officer is the Principal, Emma Heathcote (appointed 16th Sept 2024). The exiting Principal was Richard Blackwell (retired on 20th Sept 2024)

5.2 Organisational Structure – Boards and Committees

The relationships between the boards and committees of the Northern College of Acupuncture can be illustrated as follows:



- Overall responsibility for governance rests with the Board of Directors/Trustees.
- The Academic Board is responsible for all decisions on academic policy.

This structure and the membership of our Boards and Committees ensure that both College staff and students have substantial input into our decision-making processes. The Academic Board, Boards of Study and Health & Safety Committee are all attended by student representatives. The Board of Directors/Trustees

and Ethics Committee are attended by public interest representatives. The Academic Board is advised by experienced external academics.

All formal meetings have agendas and are minuted. Some informal enhancement or management meetings are recorded with simple action points.

5.3 The Board of Directors / Trustees

Helen Thomas (Chair)

Helen is a freelance education consultant with over 25 years' experience in higher education. She has extensive experience in quality management and enhancement, professional standards in teaching and learning, and accreditation and validation processes.

Nicholas Haines

Nick was co-founder of the College. He is an entrepreneur, international speaker, author, strategist, teacher in Chinese energetics, the creator of the Vitality Test and co-founder of the Five Institute, and a Kindness Ambassador. He has experience as an acupuncturist and owner of a complementary therapies clinic.

David Jay

David is a Fellow of the Institute of Chartered Accountants and a former Company Accountant, Financial Director and small business owner.

Graham Webb

Graham runs a marketing sales and management training business. He was previously a Senior Lecturer and Manager in both HE and FE. He has worked in IT and at BBC TV and radio and has extensive marketing experience in commercial settings. He is also a Director/Trustee of The Educational Trust and member of the Academic Advisory panel of a Dubai university.

Kate Wicklow

Kate is an experienced member of the HE policy community with extensive experience with a variety of providers and a focus on the experience, needs and rights of students. She is currently a Policy Manager for GuildHE and a reviewer for the QAA. She is also a trustee of a London university's student union.

Eric Liu

Eric has extensive commercial experience in China and the UK, including negotiation, financial modelling, market research and business strategy. He is currently a Business Associate at a Boutique Healthcare Corporate Advisory Firm.

Harriet Lansdown

Harriet is an acupuncturist who has been extensively involved in acupuncture research and acupuncture education in the HE sector, as a teacher, course leader, external examiner and educational consultant. Most recently, she was lead accreditation officer for the British Acupuncture Accreditation Board.

Board meetings are also attended by the Principal. Other members of the management team may be invited to attend for relevant agenda items, as appropriate.

Changes to the Board:

During 2023-24 Tiago da Silva left the Board.

5.4 Stakeholder Relationships

We are an independent College operating in the Higher Education sector.

Guild HE

We are a member of Guild HE, which is an officially recognised representative body for UK Higher Education. Guild HE aims to be the advocate of choice for smaller and specialist higher education institutions and its members include universities, university colleges, further education colleges and specialist institutions from both the traditional and private (“not for profit” and “for profit”) sectors. Member institutions include major providers in professional subject areas including art, design and media, music and the performing arts; agriculture and food; education; business and law, the built environment; health and sports.

Health Sciences University (HSU)

In 2023-24 we provided the following courses:

- BSc (Hons) in Acupuncture
- MSc/PGDip in Nutrition Science and Practice
- MSc/PGDip in Chinese Herbal Medicine

All of these courses were validated by our validating partner, the University College of Osteopathy (UCO), which merged with the Anglo-European Chiropractic College to become the Health Sciences University (HSU) in August 2024. This means that students whose completed awards were approved by the Assessment Boards before the end of July 2024, received their degree from UCO, and students who completed awards after that, received their degree from HSU.

Our Quality Assurance is delivered in collaboration with our validating partner. Formal quality assurance feedback is given at the Assessment Boards and Boards of Study, and our validating partner appoints external examiners for each of our courses. There is also a substantial process of regular reviews, including annual monitoring reports and periodic major reviews/re-validations. The College and our validating partner each appoint a link tutor to ensure a good flow of communications.

5.5 Accrediting Organisations

British Acupuncture Accreditation Board (BAAB)

The College’s acupuncture courses were re-accredited in 2019-2020 by BAAB, following a successful re-accreditation review. Our next re-accreditation review will be due in 2026. As a result of our accredited status, students who are awarded the BSc in Acupuncture are eligible to apply for membership of the professional body, the British Acupuncture Council (BAC).

European Herbal Traditional Medicine Practitioners Association (EHTPA)

Register of Chinese Herbal Medicine (RCHM)

Renewal of accreditation of our course in Chinese herbal medicine by the Accreditation Board of the EHTPA also took place successfully in 2019-20. Our next re-accreditation will be in 2025. As a result of our accredited status, students who successfully complete the Postgraduate Diploma in Chinese Herbal Medicine, or the taught part (first two years) of the Master of Science in Chinese Herbal Medicine, are eligible to apply for membership of the professional body, the Register of Chinese Herbal Medicine (RCHM).

Nutritional Therapy Education Commission (NTEC)

Complementary and Natural Healthcare Council (CNHC)

British Association for Nutrition and Lifestyle Medicine (BANT)

Successful re-accreditation of our MSc in Nutrition Science and Practice by the Nutritional Therapy Education Commission was confirmed in 2022. Re-accreditation is normally valid for a period of three years. Accredited status means that students who successfully complete the Postgraduate Diploma Nutrition Science and Practice or the taught part (first two years) of the Master of Science in Nutrition Science and Practice, are eligible to apply for registration by the Complementary and Natural Healthcare Council (CNHC) and for membership of the professional body, the British Association for Nutrition and Lifestyle Medicine (BANT).

Each of the accrediting organisations receives our annual course monitoring reports.

The BAAB and EHTPA conduct an annual review process and respond to our annual course monitoring reports. In addition, the BAAB, EHTPA and NTEC conduct substantial processes of major review/re-accreditation every 3 to 6 years.

The British Acupuncture Council and the Complementary and Natural Healthcare Council are recognised by the Professional Standards Authority for Health and Social Care, which is accountable to parliament. The registers of these bodies are approved by the Authority as Accredited Voluntary Registers. This means that the public can be further assured that these bodies meet high standards in governance, standard-setting, education and training, management, complaints and information. Members of approved registers can use the Authority's kite-mark.

6 Strategy Review

The NCA strategy is committed to supporting the NCA Charitable Objectives. The strategy is also committed to the delivery excellence, to drive reputational value and ensure long term financial sustainability.

The implementation of strategy in 2023-24 has been limited by an out-dated organisational structure, which has struggled to keep pace with the rapidly developing economic and regulatory environment. Insufficient management data has not enabled visibility of the external environment and has impacted on the clarity of decision-making. This has led to inconsistencies in the structure and administration of finances, resourcing and staffing.

These issues have progressively impacted on the financial health of the NCA and particularly so in 2023-24, which closed with a significant deficit, reducing financial reserves and limiting future investment.

The NCA is committed to developing a clear strategic direction to clear the deficit and support the organisation's Charitable Objectives and continue to deliver quality and value to students, patients, staff and external stakeholders.

7 Financial Review

7.1 Financial Strategy

Financial Strategy

The 2023-24 accounts show a deficit of £112,391, which is 10.2% of the NCA annual turnover of £1,099,978.

The accounts for the previous year 2022-23 showed a slim margin of profitability at 0.1% of annual turnover, indicating early signs of post-covid recovery.

The accounts for the previous year 2021-22 show a deficit of 5.0% of the annual turnover, at a time when most other businesses and organisations around the world were also struggling with the financial impact of covid. However, unlike the NCA, these businesses and organisations were planning for financial recovery and investing in asset development to 'future-proof' their businesses and stabilise their markets. These developments included the implementation of robust risk-management systems, updating operational models and IT systems, and investing in the delivery of services to customers, to secure routes to market.

What is noticeable from the NCA accounts in recent years, is the lack of investment in asset development. A review of the NCA Balance Sheet over recent years shows that the NCA has not made any substantial investment to identify and mitigate risks in the external environment, and to secure a credible, competitive and sustainable position in the higher education market.

It is also noticeable that the NCA has for many years relied upon a basic financial strategy of breaking even, using a review of the 'Profit and Loss' (P&L) account to consider financial performance, and retrospectively, the impacts of market volatility.

P&L Account and the Balance Sheet

For 2023-24, the P&L account showed a turnover of £1,099,978, of which £1,003,603 (91%) was generated from tuition fee income of taught awards.

Of the total expenditure in 2023-24, staffing costs totalled £556,866 (45.9%), lecturers' fees totalled £226,678 (18.7%), university registration fees totalled £67,127 (5.5%), accreditation and validation totalled £47,058 (3.9%), building rental totalled £55,000 (4.5%), and travel and accommodation costs totalled £20,576 (1.7%). As such, the estimated staffing costs associated with the operations of the NCA and the delivery of academic programmes, is approx. £783,544 (64.6%).

The P&L account for 2023-24 shows an operational loss of £112,391, which has been reconciled using reserved funds

There is a need to invest in the development of assets at the NCA, including existing and new curriculum development; research; pedagogy and delivery; strategic and financial management; data management, analysis and insight; enhancing the academic value proposition to attract and retain academic excellence; and enhancing quality of the student experience.

The depletion of the NCA reserve funds to reconcile the operational loss this year, and to maintain a credible and fully costed student protection plan, limits the scope for investment in business-critical services. This means that we will need to generate existing operational resource, at a time when we will be working to reduce our overall operational expenditure.

We anticipate that initial investment will further increase the level of deficit in the P&L accounts in the short-term, and we will need to accept that realising our return on proposed investments, may take years to impact on profitability.

Tuition Fees and Student Loans

Although the NCA has uncapped fee registration status with the OfS, the tuition fees for the BSc Acupuncture were held at the capped fee rate of £9,250 p/a in 2023-24, enabling both full time and part time students to access student loans. Eligible full-time students were able to apply for a partial tuition fee loan of £6,165 to part cover the full-time annual tuition fee, whereas eligible part time students were able to apply for a tuition fee loan of £4,625, to cover the entire part time annual tuition fee.

For the MSc Nutrition Science and Practice, eligible students were able to apply for a tuition fee loan up to the value of 62% of the total 3-year p/t tuition fee, and for the MSc Chinese Herbal Medicine, eligible students were able to apply for a tuition fee loan, up to the value of 74% of the total 3-year p/t tuition fee.

Due to maintaining OfS uncapped tuition fee status in 2023-24, the NCA was not eligible to benefit from OfS grant funding to support teaching and learning, or to access research funding opportunities available through UKRI and the research councils.

7.1.1 Student Recruitment and Retention

Over recent years, the NCA has experienced higher than expected drop-out rates for student progression and course completion.

As a reference, our average drop-out rates from starting an academic programme in Year 1 to completing an academic programme in Year 3 or Year 4, were 33.0% for the full time BSc Acupuncture, 43.1% for the part time BSc Acupuncture, 49.2% for MSc Nutrition Science and Practice, and 31.1% for MSc Chinese Herbal Medicine.

Across the higher education sector, it is recognised that there is an increasing need to strengthen student support services. It is within this context that the NCA is committing increased resourcing to support our students. Furthermore, these drop-out rates are being used to inform a risk profile for student recruitment planning and financial forecasting. We will also use this information to inform our admissions policy, our entry requirements and our assessment of the needs and support requirements of applicant students.

Improving quality throughout our recruitment and admissions policies and procedures, may result in an increased financial deficit in the short-term, whilst contributing to the financial and reputational sustainability in the long-term.

8 Activities during the year in relation to our charitable objectives

8.1 Education

BSc Acupuncture

Following a period of uncertainty due to changes in the leadership of the BSc Acupuncture, the appointment of a new Course Director has brought valuable leadership and stability to the programme, including stability in academic resourcing and teaching staff, and a vision for future developments and improvements. A high number of students will graduate with a first-class honours degree this year, which is testimony to the skills and expertise of the teaching team.

The change of faculty leadership, the turnover of academic colleagues, and further senior leadership changes within the College, have inevitably been unsettling for both colleagues and students. Despite the challenges in succession management and managing student expectations, the appointment of new permanent academic colleagues, a first for the college, presents an exciting opportunity to bring about timely change and exciting programme developments.

Furthermore, as 2025 is a reaccréditation and validation year for the college, this provides an opportunity to explore major changes to the course. These ideas are currently being developed in partnership with our key stakeholders, work that is acknowledged within the faculty as being essential and presenting an exciting opportunity for the acupuncture degree to stretch its boundaries, appeal and demographic reach. The year is starting with new staff, new energy and new focus and promises to be a defining year.

MSc Nutrition Science and Practice

The 2023-2024 academic year for the MSc Nutrition Science and Practice programme was characterised by substantial shifts in both leadership and program structure, leading to important accomplishments, while also presenting challenges for the team.

One of the major developments was the transition in programme leadership, as the existing Course Director retired from the role. The appointment of an experienced Course Director introduced a much-needed sense of stability and reassurance for the students, and this has been a key positive outcome. Under the new leadership, there has been a focussed effort to enhance student involvement and foster better communication channels. The restructuring of communication processes allowed for more direct student feedback, ensuring the voices of the students were not only heard but actively integrated into the programme's future direction. Looking ahead, a clear vision for the development of the programme has emerged, promising exciting academic advancements for students and academic faculty alike.

The 2023-24 Annual Review for the programme was successful and the PGDip / MSc in Nutrition Science and Practice has now been fully accredited until May 2025. The reaccréditation of the course is a testament to the team's commitment to maintaining academic standards and excellence. Despite these achievements, there were also some challenges for the programme this year. A notable difficulty was the decision not to recruit to Year 1 in 2024-25, due to low student enrolment in 2023-24. This decision caused some unease among the student body and resulted in a period of uncertainty. As a result of this decision, students enrolled on the Access course, due to run earlier in 2024, had to be withdrawn and have their fees refunded. Furthermore, the loss of some key academic and practitioner colleagues, also impacted on the programme.

In response to these challenges, the NCA has now appointed a strong team of well qualified teaching colleagues, all of whom are committed to delivering a high-quality learning and research experience for students. The team has focussed on shifting from a predominantly in-person teaching model, to a blended learning model, featuring both face-to-face and online delivery, and introducing wide variation in the learning activities. This is not only in line with contemporary pedagogy but also enables access to the programme from a wider demographic student market. This shift promises to attract a more diverse range of students and create a more inclusive and supportive environment.

As the nutrition-team looks forward to the coming years, the transition to a more flexible online model holds great promise for enhancing student satisfaction and expanding the programme's reach. The team is well-positioned to work with key stakeholders, to thrive in the changing educational landscape, and to offer an increasingly accessible, high quality learning experience.

MSc Chinese Herbal Medicine

The MSc Chinese Herbal Medicine is one of the most comprehensive Chinese herbal medicine programmes in the UK and is available to international students since it is delivered exclusively online. It is currently the only academic qualification in Chinese herbal medicine in the UK, that is EHTPA accredited.

In 2023, the programme recruited 18 new students, however attrition was much higher than expected and only 13 students completed the year and progressed to Y2. The final year students completed their research projects, with two graduating with merit and distinction awards. The programme has generated good feedback from students, particularly in relation to the delivery of real-time online clinic supervision.

As the programme currently only recruits in alternate years, the next recruitment year will be 2025. This offers an ideal opportunity to refresh the curriculum during 2024-25, particularly the curriculum areas relating to gynaecology and herb-drug interactions, and plant science, which will require additional investment.

8.1.1 Admission of Students

Course	Number of Students
BSc (Hons) in Acupuncture	33
PG Diploma in Nutrition Science & Practice	1
MSc in Nutrition Science and Practice	11
PG Diploma in Chinese Herbal Medicine	5
MSc in Chinese Herbal Medicine	13

8.1.2 Graduation of Students

Undergraduate Course	Total Completions	1st	2:1	2:2	3rd	Ordinary Degree
BSc (Hons) in Acupuncture	21	6	12	3	0	0

One student exited early with a DipHE in Chinese Health Studies.

Seven students exited early with a CertHE in Chinese Health Studies.

Postgraduate Courses	Total Completions	Distinction (MSc only)	Merit (MSc only)	Pass (MSc or PGDip)	Exited early with PGDip	Exited early with PGCert
MSc in Nutrition Science and Practice	7	2	4	1	4	0
MSc in Chinese Herbal Medicine	3	1	1	1	0	0
MSc in Advanced Oriental Medicine (Research and Practice)	2	0	2	0	0	0
MSc in Advanced Complementary Medicine (Research and Practice)	1	0	1	0	0	0
MSc in Advanced Nutrition (Research and Practice)	1	0	0	1	0	0

8.1.3 National Student Survey

The NSS survey is sent to all final year undergraduate students but does not include postgraduate degree students. As such, only final year undergraduate students on the BSc Acupuncture were surveyed.

Our **2024** response rate was:

NCA response rate	70%
Healthcare sector average response rate	72%

*NCA does not have a student union, so it is assumed that the students are commenting on their cohort student representatives.

Compared with the scores for 2022-23, NCA scores for 2023-2024 showed a higher level of satisfaction for 12 out of the 26 questions, and a lower level of satisfaction for 10 of the questions (although 6 of these were within two percentage points of 2023). NCA scores were higher than the sector average for 21 of the questions, out of 26.

Compared to last year, notable improvements in the level of student satisfaction are seen in response to questions relating to academic support, fairness in marking and assessment, clarity in marking criteria, and quality of academic feedback.

The most notable declines in levels of student satisfaction were for questions relating to the communication of changes to teaching, and issues related to valuing student opinions, the communication of mental wellbeing support available, and acting upon student feedback. These are also the areas where we scored below the sector averages. This is probably a result of staff changes and the hiatus between the previous Course Director leaving and the new Course Director starting.

The rating for IT resources and facilities to support student learning also showed lower levels of satisfaction compared to last year, although we already have plans in place to upgrade both our technology and our staff skills, to deliver enhanced capability to students.

See [Appendix A](#) for further details.

8.1.4 Registration with the Office for Students

We maintained our registration as an Approved Provider (uncapped fees) with the Office for Students (OfS), the statutory higher education regulator in England. As such, we continue to submit regulatory reports and annual returns.

Our registration enables our undergraduate students to access both tuition fee loans and maintenance loans, and our postgraduate students to access tuition fee loans. This also enables our part-time undergraduate students studying for a second undergraduate degree, to access tuition fee loans.

8.1.5 Statistical Submissions

We subscribe to the Higher Education Statistics Agency (HESA) and annually submit statistical returns, which describe our student population.

8.1.6 Graduate Outcomes Survey (latest data available 2022-23)

Student Outcomes

The Student Outcomes data measures institutional performance for student Continuation (with their qualification studies), Completion (of their qualification) and Progression (into professional employment or further studies).

The data is managed by the OfS and offers NCA performance data benchmarked with a minimum performance threshold, and an upper and lower percentage of statistical uncertainty.

The available data presents the NCA position on Student Outcomes, between 2018-19 and 2021-22.

The BSc Acupuncture scores consistently higher than the OfS threshold for Continuation, Completion and Progression.

However, the MSc programmes (MSc Nutrition Science and Practice and MSc Chinese Herbal Medicine) score below the OfS threshold for Continuation and Progression, with no data available for Completion.

Continuation (continuing their qualification studies)

BSc Taught Undergraduate Degrees:

86.4% (OfS benchmark 80%) with 2.0% below the OfS threshold and 98.0% above the OfS threshold.

MSc Taught Postgraduate Degrees

52.5% (OfS benchmark 65%) with 98.9% below the OfS threshold and 1.1% above the OfS threshold.

Completion (higher education qualification)

BSc Taught Undergraduate Degrees:

82.1% (OfS benchmark 75%) with 3.1% below the OfS threshold and 96.9% above the OfS threshold.

MSc Taught Postgraduate Degrees

No data available.

Progression (professional employment or further study)

BSc Taught Undergraduate Degrees:

88.2% (OfS benchmark 60%) with 0.0% below the OfS threshold and 100% above the OfS threshold.

MSc Taught Postgraduate Degrees

84.6% (OfS benchmark 85%) with 54.8% below the OfS threshold and 45.2% above the OfS threshold.

For further information, please click [Student outcomes: Data dashboard - Office for Students](#).

8.1.7 Marketing and Recruitment

We continued to implement our marketing strategy and to monitor the external environment. The marketing strategy is developed by the Marketing Manager with input from the Principal and the Recruitment and Marketing Working Group (which includes three of our trustees). It is approved annually by the Board of Trustees/Directors. The Board also receives regular marketing updates throughout the year.

Our good reputation and our relationship building activities make an important contribution to the development of our social media profile and recruitment marketing communications.

8.1.8 IT Developments

We continue to streamline processes and develop our CMS, so it remains fit-for-purpose. Updates to computer hardware and teaching room equipment have been made. Notable improvements include the redevelopment of our online course applications, which have been replaced with Jotform. This integration streamlines the application and admission phase, meaning that data entered by applicants to our courses goes directly into Salesforce, our Student Information System, rather than relying on manual staff data entry.

We signed up to Cliniko as part of a phased replacement of our clinic systems. This will allow us to move away from Acuity, and to incorporate software that can be used both for bookings, as well as reporting for research purposes.

We also rolled out Multi-Factor Authentication (MFA) to all users for improved student and staff cyber security.

8.1.9 Academic Enhancement

We report on enhancement activities in relation to each of our courses in the annual Course Monitoring Reports for each course. In addition, the Academic Board works to identify overall themes for college-wide enhancement. Currently these are:

1. Improve help for students on academic writing and study skills.
2. Improve early identification and effective communication of student support needs.
3. Enhance suggested reading lists.
4. Improve student engagement with their studies
5. Review student workload
6. Review balance of online and in-person teaching

These enhancement themes are recorded and monitored in our Quality Improvement Plan (QIP). For each of these areas the Academic Board identifies specific actions which are documented and monitored in the QIP. Good progress is being made in each of these areas.

8.1.10 Student Support

We undertook further work to improve our information sharing and pro-active response in relation to student support needs. In particular, we created a new role of Student Support Officer and appointed a staff member with considerable knowledge and experience of supporting students with specific learning differences. We also further refined our new system for identifying needs and concerns, responding in a timely manner, tracking outcomes and sharing support information (with consent) with key staff.

8.1.11 Provision for CPD and Alumni – the Practitioner Hub

The Practitioner Hub was launched in early 2021. This review covers some of our achievements of 2023/2024 and looks at our aims for the next year as well as offering a short update on our staff team.

Our membership aims to:

1. Encourage community by providing a safe space for professional and personal growth. We aim to counter professional isolation with a sense of connectedness and belonging.
2. Provide inspiring CPD content.
3. Online subscription service for closed supervision groups, to explore issues such as building a practice, boundaries, payment, relationships with patients, and working to avoid burnout.

Membership of the Hub is currently:

- 41 Essential Members
- 13 Staff Members
- 1 discounted Membership
- 7 free Members (Membership is often given as a prize)
- 13 Staff Members

We “closed” the doors to the membership in the summer, and plan to relaunch in November 2024 with a specific focus on business support for new and experienced practitioners.

Supervision

One of our two supervisors left our supervisor team in May 2024 due to health issues. Sadly, with her, we also lost several of our 'Total Members' who were part of her supervision groups from the beginning. Our second supervisor's supervision group numbers also declined, and we paused all supervision groups in Spring. We now have a group of 5 practitioners starting supervision in September with our second supervisor.

In-person Courses

The CPD events for 23-24 were:

- Assisted Conception with Hannah Pearn (November 23) - 2-day workshop, 14 places sold.
- Qi Gong with Peter Deadman (April 24) - 1-day workshop, sold 27 tickets.
- We ran a free webinar with John Jaarsveld ahead of a planned in-person event in August. The webinar was well attended and gathered more people onto our mailing list. Unfortunately, there were no sign-ups for the in-person event.
- We ran a free webinar in July with Anthony Von Der Muhll who will be leading a training day in September. The webinar was well attended and gathered more people onto our mailing list.

Hugh MacPherson Memorial Lecture

We continue to build our global connections through our annual online Hugh MacPherson Memorial lecture which currently has over 300 people on the mailing list who are spread widely around the world. This is also an opportunity to celebrate and support the field of acupuncture research as well as maintaining the NCA's place on the global stage.

The 2023 lecture was presented by Terje Alræk and Stephen Birch. Approximately 60 people attended the live lecture and to date 4 people have watched the recording.

Alumni

Our marketing team have been working on collating an alumni list that goes back to 2017. Currently, there are plans to open membership of the Hub to new graduates at the graduation ceremony in November.

Chinese Medicine Nutrition Diploma

We launched the Chinese Medicine Nutrition Diploma in October 2023 with an initial cohort of 23 students. Twenty students completed the diploma and one deferred to the 24/25 cohort

The Diploma was a resounding success with high levels of student engagement and participation. Feedback praised the distinctive aspects of this course, including:

- Live cooking demonstrations with the option to cook along with an expert chef
- Varied teaching team with core teachers and a selection of guest experts
- A syllabus that weaves together contemporary nutrition and traditional East Asian medicinal theory

Practitioner Hub

There have been several staff changes in 23-24 for The Practitioner Hub. Two support staff left, and we appointed a co-lead of the Hub who previously worked in the Nutrition team as Clinic Lead and Assistant

Course Director for the MSc Nutrition Science and Practice. Our new co-lead has extensive experience in course creation and delivery, student support, and administration.

8.2 Clinical Services

Three teaching clinics operate from the College: acupuncture, nutrition and Chinese herbal medicine. All clinics offer a high quality and professional service to the local community and beyond, with professional treatment at reduced rates. Patient surveys and feedback generally demonstrate a very high level of satisfaction including praise for the students, with occasional suggestions for improvement, which is acted on.

The acupuncture clinics currently run Monday to Friday, with seven experienced acupuncture practitioners providing clinical supervision. Feedback from students on the quality of their experience in clinic is consistently very good. A multibed clinic runs on Mondays, with two supervisors and up to 16 patients being seen, and the main clinic has one supervisor with up to eight patients attending per day. Our acupuncture clinics remain busy with small waiting lists. As of July 2024, the Saturday clinic closed to allow the supervisor to move to the new teaching clinic in Northwich. This clinic will be closer to the students on the west side of the country. A clinic is also opening in Southwark in 2024 to increase student recruitment from those close to London.

The herbs clinic continues to run completely online enabling patients to attend from all over the country, with two clinics and eight patients seen in total per week. Patient numbers are kept to four per day to allow time for students to discuss, reflect and learn from each case. There is always a waiting list for the herbs clinic, due to the excellent reduced rates, referrals from local practitioners, and students on the acupuncture course wanting to experience this side of Chinese Medicine for themselves.

The nutrition clinic remains a hybrid model where the supervisor and students are in college while clients can choose to attend in-person or online. As with the herbs clinic, patient numbers are kept to four per day to allow time for students to discuss, reflect and learn from each case.

During the financial year (1 Jul 23 – 30 Jun 24) the numbers of filled appointments were:

- Acupuncture Main clinic = 1243
- Acupuncture Multibed = 523
- Herbs clinic = 279
- Nutrition clinic = 95

The clinics provided 5.4% of our total income (2023: 5.1%), reflecting the return to more normal services and the high levels of demand, following the covid years.

Our teaching clinics make a valuable contribution to the training of our students as practitioners, and they enable us to meet one of our charitable objectives by providing treatment to members of the public with limited incomes.

8.3 Research

NCA Research Strategy

Our Research Strategy was reviewed and revised in 23-24, to align with our strategic objectives and focus on five areas of activity. The strategy is available on our public-facing website, increasing the College's research profile and giving our research activities a visible target.

There is an ongoing issue for the College in that research, while a key part of our activities, does not represent a direct revenue stream and in fact (in revenue terms) operates only as a negative on the overall College balance sheet. While we actively market our research profile as part of our USPs within our subject areas and to that extent may consider research an indirect contributor to revenue streams, our status as an Approved (no fee cap) Provider precludes us applying for many research grants.

As such, we cannot easily attract the commercial and academic research revenue streams or public recognition for which government-financed universities are eligible; instead, for major research projects, we currently rely on collaborations with larger Universities. With this in mind, particularly at a time of financial vulnerability and uncertain levels of recruitment, we have focused on the teaching of appropriate research skills for our pre-qualifying courses. This strategy protects our research objectives while continuing to build the skills base in our therapeutic professions and enhancing student learning opportunities.

Research Project Modules

The redesigned research project modules in the third year of the MSc courses ran for the fourth year. Students produce a mix of outputs including a reflective research diary, a poster and a journal article which forms the basis of a submission for publication soon after final marks are confirmed.

Clinical Outcomes Research and Audit

Our Clinical Outcomes Research and Audit project (CORA) gathers clinical outcomes data across the College's teaching clinics using the Measure Yourself Medical Outcomes Profile (MYMOP) questionnaire. This is shared with the research organisation Meaningful Measures (which owns and administers MYMOP) as part of an aggregated dataset made available to researchers for investigation of the effectiveness of our therapies. We have continued for the third year using the MYMOP Digital Portal in our acupuncture teaching clinic.

The CORA audit for the acupuncture and nutrition clinics for the 2022-23 year is available on our public-facing website. Data largely supports previous findings on clinical outcomes (broadly, both clinics effect a significant change over a typical course of treatment). Comparisons between the different acupuncture clinics reveal significant differences in data collection practice, which are being monitored and improved for the coming academic year. Audit of the 23-24 year will take place in the autumn of 2024.

Patient Experience Survey (PATEX)

All patients in our clinics are contacted at the close of a course of treatment (or at six weeks, whichever is earlier) to request completion of our PATEX survey. This is an online form (paper versions are also available) with a mix of quantitative and qualitative questions on all aspects of the NCA clinic and our patients' experience with this. The survey was designed and an initial mailout carried out in August 2024. Analysis and reporting will take place in the autumn of each year.

NCA Research Showcase and Student Research Directory

Both the Research Showcase and the Student Research Directory were discontinued in the 23-24 academic year due to lack of resources.

Support for Publication

The Support for Publication (SfP) programme supports undergraduate and postgraduate students to publish the results of their research. The package includes support from a supervisor and the Research Ethics Committee, plus a small grant from the College, using legacy funds from the Foundation for Research into Traditional Chinese Medicine (for all students, not only those studying a form of TCM) to cover the costs of writing-up and peer review. During the 23-24 academic year, six students applied and were accepted onto the SfP programme (1 Nutrition, 3 Online MSc, 2 Herbs).

Research with affiliated organisations

The Sessions of Acupuncture and Nutritional Therapy Evaluation for Atrial Fibrillation (Santé-AF) feasibility study, a small-scale randomised controlled trial, came to a close. Santé-AF is the PhD project of our Research

Director, carried out with the oversight of the Clinical Trials Unit at the University of York and the support of the NIHR Clinical Research Network. The trial has now published its findings, which can be read and downloaded at <https://www.sante-af.org/trial-progress/and-finally-the-results/>.

Doctorate Award

Our Research Director, Karen Charlesworth, has now been awarded her doctorate, and this is aiding the exploration of work with partner organisations as well as lending support to a redesign of our research skills teaching, learning and assessment strategy.

Collaborative Research Activities

We are currently involved in a number of potential projects with partner organisations. These include:

- **Chocolate & Co / York St John University substance use rehabilitation café.** This project proposes to work with a local café that is staffed and attended by rehabilitating substance users, training baristas to apply ear magnets to auricular acupuncture points.
- **Leeds University trial of nanomolecular lotion in acupuncture practice.** This collaboration, with Professor of Nanotechnology Li Jing Ke and colleagues including our nutrition graduate Vicky Richardson, seeks to explore the ways in which acupuncturists incorporate into practice a new nanotech lotion that potentiates acupuncture points; the study will also consider the patient experience.
- **The Christie NHS Foundation Trust, Manchester, and Southampton University Clinical Trials Unit: ACUFOCIN 2 trial.** The ACUFOCIN 2 project is a large-scale trial of acupuncture for the symptoms of chemotherapy-induced peripheral neuropathy, currently at the design and funding stage. Our research director plays an advisory role in the trial, and the funding application includes an allocation of time for the College to collaborate with academic and NHS colleagues on both the main trial and a nested sub-study on patient and practitioner experience of the treatment.

8.3.1 Staff Activities

Many of our academic colleagues at NCA make a valuable contribution to both professional bodies and the HE sector, through their scholarly and research activities ([Appendix B](#)).

8.4 Publications and Presentations by Students and Alumni

Brass, M. & Charlesworth, K. (2024) Evaluating the Outcomes and Patient Experience of Group and Individual Acupuncture in an NHS Cancer Care Setting: A Mixed Methods Study. Supportive Care in Cancer (in press)

Cleminson, C. & Charlesworth, K. (2024) Has the quality of evidence for the treatment of polycystic ovary syndrome with acupuncture improved since 2019? A narrative literature review. European Journal of Oriental Medicine (in press)

Graca, S., Huemer, M., de Valois, B., Vang, B. and McClure, L. (2024) “Are we there yet?” – Green shoots of progress in acupuncture implementation in healthcare. European Journal of Integrative Medicine, 69:102371

He, H. & Charlesworth, K. (2024) Does an acupuncture treatment with five minutes' needle retention time have an equivalent effect to 30 minutes in migraine prophylaxis? Proposal for a randomised controlled trial. *European Journal of Oriental Medicine* (in press)

Charlesworth, K., Torgerson, D. and Watson, J. (2024) Sessions of Acupuncture and Nutritional Therapy Evaluation for Atrial Fibrillation (Santé-AF): a randomised feasibility study. *Journal of Pilot & Feasibility Studies* (in press)

Giese, N., Kwon, K. K., Armour, M. (2023) Acupuncture for endometriosis: A systematic review and meta-analysis. *Integrative Medicine Research*, 12 (4): 101003

Presentations:

- **Mandy Brass.** Presentation at the RCCM Conference, 2024 and the British Acupuncture Council conference 2023:
Evaluating the outcomes and patient experience of group and individual acupuncture in and NHS cancer care setting: a mixed methods study. **Winner of the George Lewith Prize for Research into Complementary Medicine in the NHS**
- **Dr Karen Charlesworth.** Presentation at the RCCM Conference, 2024:
"Thursday afternoon in clinic": Why complementary therapies are truly complex interventions, and possible strategies for investigational research.
- **Dr Karen Charlesworth.** Poster presentation at the RCCM Conference, 2024:
Acupuncture or nutritional therapy for atrial fibrillation: a mixed methods case series.
- **Kirsten Chick.** Poster presentation at the RCCM Conference, 2024:
Mushrooms, Gut Microbiota and Cancer: a scoping review with qualitative synthesis.
- **Jennefer D'Aubyn.** Poster presentation at the RCCM Conference, 2024:
Nutritional interventions for long-COVID: a systematic quantitative literature review. **Winner of RCCM Conference Award for Best Poster Presentation**
- **Thomas Lewis.** Presentation at the RCCM Conference, 2024:
Being Treated in an Open Setting Reminds Us That We All Have Problems: Experiences and Self-Reported Clinical Outcomes of Service-Users in a Multi-Bed Acupuncture Teaching Clinic. This study was undertaken as part of Thomas's final year MBChB studies at the University of Leeds, supported by the NCA.
- **John Livesey PhD.** Presentation at the RCCM Conference, 2024:
Does Facial Cosmetic Acupuncture Improve the Appearance of Wrinkles? A Narrative Review of the Literature.
- **Rick Scott.** Poster presentation at the RCCM Conference, 2024:
Examining a protocol of electroacupuncture as a complex intervention for sciatica through scoping review, expert practices, and case study vignettes.

8.5 MSc Research Projects

8.5.1 Chinese Herbal Medicine

Laura Biddle: What are the treatment approaches of Chinese Herbal Medicine Practitioners for male fertility patients? A semi-structured qualitative interview study.

Michael Ranft: Mechanisms underpinning the effects of Chinese herbal medicine botanicals on rapid eye movement sleep: A systematic review.

Bruce McCallum: What can Li Dongyuan teach us about the gut microbiome? An interview-based exploration of diagnosis, treatment and lifestyle advice from the Treatise on Spleen and Stomach.

Nutrition Science & Practice

Jennefer D'Aubyn: Nutritional interventions for long-COVID: a systematic quantitative literature review

Sarah Smith: The effect of Nutritional Therapy for a 45-year-old woman experiencing perimenopausal symptoms: A case report

Elly Ling: Nutritional therapy in a 54-year-old woman with chronic fatigue and post-treatment Lyme disease syndrome: A case study. A qualitative analysis of personalised nutritional intervention outcomes and patient response

Kirsten Chick: Mushrooms, Gut Microbiota and Cancer: A scoping review with qualitative synthesis

Laura Bolland: The effects of nutritional therapy in a 49-year-old female with diarrhoea-predominant irritable bowel syndrome: a retrospective case report.

Sarah McCann: Nutritional Therapy in a 54-year-old woman with mild to-moderate Crohn's disease: A case study.

Sophie Sowerby: Nutritional therapy for a 35-year-old female recreational CrossFit® participant wanting to lose weight and reduce body-fat percentage: a mixed-methods case study.

Advanced Oriental Medicine:

Rick Scott: Examining a protocol of electroacupuncture for sciatica as a complex intervention through scoping review, expert practices, and case study vignettes

Mandy Brass: Evaluating the Outcomes and Patient Experience of Group and Individual Acupuncture in an NHS Cancer Care Setting: A Mixed Methods Study

Advanced Nutrition:

Rose Ferguson: Understanding the potential benefits and risk factors when using an intervention of time restricted eating in clinical practice. A phenomenological study of professionally registered nutritional therapists' perspectives

Advanced Complementary Medicine:

Miriam McDonald: The use of medicinal mushrooms by Western herbal medicine practitioners in their practice: Applied Thematic Analysis

Contributions from Volunteers

In relation to the contributions to the work of the College made by volunteers over the year, trustees, graduates, and students have generously given of their time to attend meetings of Boards and Committees.

Overseas Placements for Learning and Clinical Practice

There were no overseas placements for students and alumni in 2023-24

9 Staff Development

- 3 colleagues completed Safeguarding training – one of them being Designated Safeguarding Lead training.
- 4 colleagues qualified in First Aid. Nine staff received mental health first aid training.
- Our College Manager is being supported with study time and tutor support in gaining a level 5 CIPD qualification in Human Resources.
- Our IT Officer is being supported with study time to develop skills in Salesforce (our Student Information System) and completed a Jotform qualification.
- 4 colleagues attended a Leadership seminar.
- We supported 2 academic colleagues in completing their PGCert in Academic & Clinical Education (one Course Director and one Clinic Supervisor).
- We've continued to support the development of our new Student Support Officer, on courses related to SpLD and neurodiversity.
- We continued to support the development of our academic colleagues as practitioner-scholars/researchers and as practitioner-educators, including funding for CPD events.
- All colleagues are invited to join the Practitioner Hub for a heavily discounted rate of only £15 a year to access all the monthly lectures and the archive of recordings.
- Pulse training was provided for Clinic Supervisors and Clinical Skills Tutors.
- Various groups of lecturers and Clinical Skills Tutors meet during the year to collaborate on assessment processes and course developments and to undertake peer review. Course Directors and other Senior Lecturers work closely with less experienced staff, and shadowing and team teaching are among the ways we support their development.

10 Resources Statement

10.1 Management and Administration

The management and administration team for 2023-24 comprised:

- | | |
|---|---|
| 1. Principal | 12. Student Services Officer |
| 2. Partnerships & Services Lead | 13. Student Support Officer |
| 3. Acupuncture Course Director | 14. Marketing and Admissions Manager |
| 4. Herbs Course Director | 15. Marketing Officer |
| 5. Nutrition Course Director | 16. Engagement & Admissions Administrator |
| 6. Online MScs Course Director | 17. Finance Manager |
| 7. Research Director | 18. Finance Administrator |
| 8. Librarian | 19. Clinic Director |
| 9. Registrar and College Services Manager | 20. Receptionist x2 |
| 10. College Services Assistant | 21. Lead IT Officer |
| 11. Student Services Manager | |

10.2 Lecturer Colleagues

Our academic colleagues have considerable experience both as practitioners and as teachers. Most of them teach for us part-time and also work as practitioners. This is appropriate for courses offering a professional training and is a requirement of the accrediting bodies.

10.3 Premises

The College and York teaching clinics are located at 61 Micklegate in the centre of York, with additional teaching clinics located at BMAS House, 3 Winnington St, Northwich, and at the UCO clinic building, 98-118 Southwark Bridge Road, London

10.4 Accessibility

Our premises offer full wheelchair access to the whole building for staff, students and patients. The only exception is access to the toilets in the basement, but there is an accessible toilet on the ground floor. All floors are accessible via the lift. Entry is via the back door, where there are no steps. Parking spaces are reserved for disabled use.

Reasonable adjustments for staff, patients, and students with disabilities are addressed on a case-by-case basis and all reasonable steps are taken to respond to them, including seeking expert advice when appropriate.

10.5 Facilities Maintenance and Development

The College is responsible for the maintenance of the inside of the building and our Landlord, York Conservation Trust, is responsible for the outside of the building. Our Facilities Team ensures the building is

kept in good condition, with dedicated building maintenance days each week and regular improvements are made to keep our equipment up to date. Statutory services are carried out on a reoccurring basis to ensure we're complying with Health & Safety Regulations and matters are dealt with in a timely fashion.

10.6 Library, Learning and Online Resources

10.6.1 Resources Provision

Journals and databases: Online, the College subscribes to ScienceDirect's Health and Life Science collection (full-text journal articles from over 1200 journals published by Elsevier). The College also subscribes to 2 EBSCO databases, Alt HealthWatch and Allied and Complementary Medicine (AMED), which focus on complementary, holistic and integrated approaches to health care. We have an online subscription to the Journal of Chinese Medicine (JCM).

In addition to paid-for subscriptions, students are encouraged to research widely and to read as much of the literature as possible. Students are particularly encouraged to use the journals, databases and other resources offered by the professional bodies, associated with their areas of learning. Students are supported in the use of other databases, journals and resources by the Librarian, and have access to a variety of 'how to' guides.

Amongst our hard-copy journal holdings, we hold complete runs of JCM and the European Journal of Oriental Medicine (EJOM), and part-runs of several other useful journals. We also hold print versions of all NCA MSc dissertations.

Wi-Fi broadband throughout the building provides internet access, including access to the Student Hub which holds the library catalogue, and links to our resources and guidance.

Books: We have around 3,000 books and e-books. We hold at least one copy of all core texts, and we hold multiple copies of popular titles and key texts. Where there is more than one copy of a text, one copy is reference-only, hence always available for consultation, which is especially useful during teaching or clinic sessions. Books have colour-coded labels which makes finding (and re-shelving) volumes easier, and core texts are additionally identified visually. Where new books are required, electronic copies are now our first choice, and we now have c.70 electronic books, accessed via the online library catalogue.

A selection of core texts is held (reference-only) in both acupuncture clinics, for convenient consultation. Other teaching resources include posters and charts on the walls of classrooms and clinic rooms, and a range of models of spines and other joints, held in the basement teaching room.

Study skills materials: We continue to enhance our collection of study skills advice (in the form of documents and videos on the library pages), guided by student/staff requests and by noting what needs are most frequently observed. These resources are revised annually. In particular, the referencing app, Mendeley, is promoted to all, for accurate and fast referencing. Support sessions given to individual students are now recorded by the Student Services Manager, via Salesforce.

For a relatively small institution, the NCA has access to excellent resources; using our books and journals together with online materials - and the expertise and creativity of our staff - we support our students' educational needs.

10.6.2 Library Management

We have a Librarian who works 14 hours per week, with this time scheduled across the week to be of maximum assistance to students and staff, including at the weekend (during term time). Much of this is in-person, but one-to-one sessions via Teams are also offered. The monthly Library News posts by email keep everyone informed about interesting developments, changes in our provision etc. as well as asking for ideas for new resources.

10.6.3 Virtual Learning Environment

The College's virtual learning environment (VLE) is a combination of Moodle and various Microsoft 365 apps such as SharePoint and Microsoft Teams. SharePoint is used as the document repository for the VLE, Microsoft Teams for online teaching sessions, and Moodle for assignment submissions, and e-learning sessions. The VLE provides a wide range of resources for staff and students, including access to curriculum materials, learning materials, College documents and forms, and links to external resources. The materials can be easily updated and assist in keeping staff and students well informed. We implemented the newer version of Moodle (Moodle 4) which better integrates with M365, allowing a more seamless VLE navigation experience for staff and students.

10.6.4 Student Information System (SIS) (Salesforce)

We continue to improve our efficiency and record-keeping. We are always developing our student information system to accommodate for the continually evolving requirements that go along with being a HE provider, including the Data Futures programme, which has now been implemented. The SIS has been developed for use from the point of application and stores all personal information, concerns about students, student marks and HESA information, and we are able to generate reports as required.

Appendix A: NSS Results

Questions (Those highlighted yellow are the overall score for the section)	% of NCA students that agreed with the statement in 2023	% of NCA students that agreed with the statement in 2024	% of healthcare sector students that agreed with the statement in 2024
Teaching on my course	85.94	98.21	85.43
1. How good are teaching staff at explaining things?	81.25	100.00	91.13
2. How often do teaching staff make the subject engaging?	81.25	100.00	80.91
3. How often is the course intellectually stimulating?	87.50	100.00	84.56
4. How often does your course challenge you to achieve your best work?	93.75	92.86	85.20
Learning opportunities	88.75	92.86	82.39
5. To what extent have you had the chance to explore ideas and concepts in depth?	87.50	85.71	83.45
6. How well does your course introduce subjects and skills in a way that builds on what you have already learned?	81.25	100.00	84.74
7. To what extent have you had the chance to bring together information and ideas from different topics?	93.75	92.86	83.63
8. To what extent does your course have the right balance of directed and independent study?	81.25	85.71	77.41
9. How well has your course developed your knowledge and skills that you think you will need for your future?	100.00	100.00	82.88
Assessment and feedback	85.00	92.86	78.27
10. How clear were the marking criteria used to assess your work?	93.75	92.86	75.97
11. How fair has the marking and assessment been on your course?	68.75	85.71	81.19
12. How well have assessments allowed you to demonstrate what you have learned?	75.00	100.00	81.79
13. How often have you received assessment feedback on time?	100.00	100.00	79.85
14. How often does feedback help you to improve your work?	87.50	85.71	72.71
Academic support	81.25	92.86	85.55
15. How easy was it to contact teaching staff when you needed to?	81.25	92.86	85.48
16. How well have teaching staff supported your learning?	81.25	92.86	85.65

Questions (Those highlighted yellow are the overall score for the section)	% of NCA students that agreed with the statement in 2023	% of NCA students that agreed with the statement in 2024	% of healthcare sector students that agreed with the statement in 2024
Organisation and management	75.00	67.86	75.30
17. How well organised is your course?	68.75	78.57	74.17
18. How well were any changes to teaching on your course communicated?	81.25	57.14	76.43
Learning resources	81.25	85.71	86.89
19. How well have the IT resources and facilities supported your learning?	87.50	78.57	84.84
20. How well have the library resources (e.g. books, online services and learning spaces) supported your learning?	81.25	92.86	89.80
21. How easy is it to access subject specific resources (e.g. equipment, facilities, software) when you need them?	75.00	85.71	86.35
Student voice	85.42	71.43	74.00
22. To what extent do you get the right opportunities to give feedback on your course?	93.75	92.86	82.25
23. To what extent are students' opinions about the course valued by staff?	87.50	57.14	76.49
24. How clear is it that students' feedback on the course is acted on?	75.00	64.29	63.30
25. How well does the students' union (association or guild) represent students' academic interests?	70.00	83.33	72.91
26. How well communicated was information about your university/college's mental wellbeing support services?	71.43	53.85	78.58
27. During your studies, how free did you feel to express your ideas, opinions, and beliefs?	93.75	85.71	86.44

Appendix B: Staff Activities

Questions & responses in the Annual Self-Evaluation Report submitted to the accrediting body, the EHTPA (European Herbal and Traditional Medicine Practitioners Association) in August 2024

What staff development/CPD did staff undertake in 2023-24?

Eileen Gibbon, Course Director:

- Attendance at 2024 RCHM/BACc Conference and at the Bristol Herb Garden Day Celebrating Herbal Medicine May 2024.

Zhi Hua Gao, Clinic Module Leader:

- PG Cert ACE with UCO (now HSU i.e. Health Sciences University). Attendance at the October 2023 Classic formula "Tian Hui Yi Jian" conference. Attendance at the Bristol Herb Garden Day Celebrating Herbal Medicine May 2024. Also attends TCM CPD every two weeks with FTCMP (Federation of Traditional Chinese Medicine Practitioners), normally one- two hours each session, all TCM clinic related.

Phil Trubshaw, Module Leader for Herbs & Formulae:

- Writing up his MSc dissertation for publication and presentation. This has involved reducing the number of herbs down to 5-6 key ones and writing in greater detail about their actions and cross overs between TCM and Biomedicine. The aim is to present this at the RCHM online research conference Nov 24.
- In addition to this he has also undertaken further study into dementia and geriatric care treatment with CHM and acupuncture using online resources.

Lara McClure, Module Leader for Chinese Herbal Medicine in Context:

- Delivery of a monthly online journal club for Evidence Based Acupuncture (EBA) and has given a lecture to the AAC (Association of Acupuncture Clinicians) on behalf of EBA. Attendance at 2024 RCHM/BACc Conference

Cheng Hao Zhou, Lecturer:

- External Examiner for White Crane

Rebecca O’Cleirigh, Lecturer (based in New Zealand):

Nga Paerewa Te Tiriri 1	Relates to council standard of ‘Collect and use cultural data accurately, consistently and appropriately.’ This was mostly a refresher on earlier courses. <ul style="list-style-type: none">• Provide culturally safe, competent and appropriate care for Māori and Pacific peoples that demonstrates and gives practical effect to the five principles of Te Tiriti1; Tino rangatiratanga, Equity, Active protection, Options, and Partnership.
Nga Paerewa Te Tiriri 2	Relates to council standard of ‘Collect and use cultural data accurately, consistently and appropriately.’ This introduced concepts of how and why to collect data on culture in the workplace. As the only employee this is not as relevant for me as an employer but has application as an educator. <ul style="list-style-type: none">• Provide culturally safe, competent and appropriate care for Māori and Pacific peoples that demonstrates and gives practical effect to the five principles of Te Tiriti1; Tino rangatiratanga, Equity, Active protection, Options, and Partnership.
Rongoa Level 4	<ul style="list-style-type: none">• Working through Papa Reo first lessons and workbooks (had to drop out due to family problem in France). I wanted to explore the practice of herbal medicine in the Maori traditions to better understand the use of local medicinals and the

	understanding of the model of health in this culture. (Provide health services that meet the unique needs of cultural and community groups.)
First aid course	Whilst I have been doing these courses for a very long time now it always surprises me that I learn something new, a different approach, a different teacher. This one was taken by a nurse and had many nursery teachers in it so had a lot of paediatrics specific. Controlling the “crowd” that being children and parents. Understanding pain and responses in youngsters. Maintain currency in first aid certification relevant to safety in clinical practice.

Also is working on professional and herbal regulation documents for the Chinese Medicine Council of New Zealand.

How has the staff development/CPD impacted on the delivery of the course for 2024-25?

- **Zhi Hua Gao**, who has undertaken a PG Cert ACE during 2023-24, has delivered a few days of class teaching during 2023-24 and will deliver the Year 2 Gynae teaching, previously delivered by Celine Leonard, now retired, who taught this topic as a guest in recent years.
- **Phil Trubshaw** teaches widely on the herbs course, including material related to his MSc topic. He supports and encourage students in overcoming reluctance in presenting.
- Several of the teaching team, including **Cheng Hao Zhou, Lara McClure and Rebecca O’Cleirigh**, have experience of teaching elsewhere/ insights from other institutions which enables them to contribute depth in team discussions.
- The Course Director has asked **Sarah Price** (who used to be a module leader on the course until a few years ago) to record a segment based on her topic at the RCHM/BACC Conference to slot into the Year 2 curriculum.

Faculty member	Contributions to our professions and the HE sector – e.g. external examining, accreditation teams, committee membership etc.	Scholarly and research activities – publications including journal articles, involvement in research, development of clinical practice, presentations etc.
Eileen Gibbon Herbs Course Director	Member of the Council of the Register of Chinese Herbal Medicine (RCHM).	
Lisa Snelling Online MScs Course Director	<p>Fellow of the Shiatsu Society UK and contributor to the Shiatsu Society Board meetings on Research promotion and education of the practice and in educating students.</p> <p>Registered teacher of Shiatsu FwSS(T) and preparing to deliver programmes promoting the use of Shiatsu in mainstream body-based therapies such as physiotherapy, patient recovering from surgery, neurological atrophies such as ALS and MS and in supporting those receiving treatment for cancer. Peer review of publications in preparation on the topic of Shiatsu for specific health issues.</p> <p>Reviewer: European Journal of Integrative Medicine.</p> <p>Publication: Shiatsu for MS</p>	<p>Presentation of PhD research to the Research Council from Complementary Medicine, London, August 2023). Therapist Effects in Shiatsu for People with MS.</p> <p>Publications in Preparation</p> <p>Esmonde, L. Swainston, K. van Wersch, A. Exploring Therapist effect in CAM research using TriVi. For Complementary Medicine Research.</p> <p>Esmonde, L. Swainston, K. van Wersch, A. Quality of Life as an outcome measure for treating people with Multiple Sclerosis using Shiatsu. For Journal of Evidence-Based Integrative Medicine.</p> <p>Esmonde, L. Swainston, K. van Wersch, A. The importance of philosophy of thought in CAM research. For Journal of Integrated Medicine.</p> <p>Esmonde, L. 2024 Therapeutic relationships and therapist effects in Shiatsu and complementary therapy research. Shiatsu Research Network Presentation 7th May 2024 online [https://shiatsu-research-network.org/j39/index.php]</p>
Ava Lorenc MSc Supervisor	<p>External roles:</p> <p>Associate Editor for European Journal for Integrative Medicine</p> <p>Trustee and administrator for RCCM.</p> <p>Member of the scientific advisory board for the National Centre for Integrative Medicine.</p> <p>Reviewer for various journals.</p> <p>Reviewer for a number of peer-reviewed journals.</p> <p>External examiner for PhD student at University of Technology, Sydney.</p>	<p>Scholarly and research activities</p> <p>Wise S, Lorenc A. Anatomical and Clinical Characteristics of Scalp Acupuncture Systems: A Scoping Review and Synthesis. J Acupunct Meridian Stud 2023; 16(5): 159-175 https://doi.org/10.51507/j.jams.2023.16.5.159</p> <p>Matheson L, Greaves C, Duda JL, Wells M, Secher D, Rhodes P, Lorenc A, Jepson M, Ozakinci G, Watson E, Fulton-Lieuw T, Mittal S, Main B, Nankivell P, Mehanna H, Brett J. Development of the 'ACT now & check-it-out' intervention to support patient-initiated follow up for Head and Neck cancer patients. Patient Education and Counseling 2023, https://doi.org/10.1016/j.pec.2023.108033.</p> <p>Harrogate S, Barnes J, Watts J, Lorenc A, Rooshenas L, Hinchcliffe R, Mouton R. (2024) A National Study of Peri-operative Smoking Cessation in Vascular Surgery. J.Vasc.Soc.G.B.Irel.3(3):173-178</p>

Faculty member	Contributions to our professions and the HE sector – e.g. external examining, accreditation teams, committee membership etc.	Scholarly and research activities – publications including journal articles, involvement in research, development of clinical practice, presentations etc.
Steve Woodley Online MScs Research Project Module Leader	Editor of RCHM Journal	PhD thesis accepted and published at University of Westminster website: https://westminsterresearch.westminster.ac.uk/item/wwwvy/mitochondrial-function-as-a-tool-for-assessing-function-quality-and-adulteration-in-medicinal-herbal-teas Corydalis monograph published on Herbal Reality website: https://www.herbalreality.com/herb/corydalis/ Accepted talk at RCHM research conference, along with chairing discussion and accompanied by a series of papers based on PhD research
Cheng Hao Zhou Lecturer	External Examiner for the White Crane Academy of Chinese Herbal Medicine Lecturer of the acupuncture and herb programmes at the Shen-Zhou Open University of TCM	Presentation on Image in Chinese Medicine Reasoning at the BACC conference 2023.
Rachel Pagones Nutrition Research Project Module Leader	Member of the Society for Integrative Oncology Acupuncture Special Interest Group (SIO SIG) Member of the panel of the TCM Academy Oncology Acupuncture International Certificate Program	
Helen Spriggs Lecturer	Member of Diet and Nutrition Working Group for the International Consortium on Ehlers Danlos Syndromes and Hypermobility Spectrum Disorders	Created scholarly content and presented for Session 1 of The Ehlers Danlos Society's Project ECHO Nutrition Sept 2023 – a series of six 90minute sessions – for fellow healthcare professionals. Nov '24 Presenting at the EDS ECHO Summit: Diet & Nutrition . Topics creating content & presenting on are: Nourishing the EDS body: Exploring Evidence for Dietary Protocols Dysautonomia: Exploring Dietary Management for OI, POTS, and Headache Q&A expert panels. On-going - as part of The International Consortium on Ehlers-Danlos Syndrome & Hypermobility Spectrum Disorders Diet & Nutrition Working Group currently working on a consensus paper / Delphi study in the realm of Ehlers-Danlos Syndrome & nutrition and their Road to 2026 .

Faculty member	Contributions to our professions and the HE sector – e.g. external examining, accreditation teams, committee membership etc.
David Hartmann MSc Supervisor	<p>Researched, written and presented online workshops:</p> <p>Healthy Seminars: The Seven Emotions according to Chinese Medicine: Community Unity – April 9, 2024 The Heart Shen and Pericardium: Their Connection to Mental and Emotional Health – April 12, 2024 Acupuncture Point Combinations to treat Self-Esteem, the Inner Critic and Shen Scars – May 24, 2024.</p> <p>China Books Melbourne (Net of Knowledge): Acupuncture Point Combinations to treat Mental and Emotional Disorders: A Practical Workshop – June 29-30, 2024</p> <p>Net of Knowledge: Acupuncture Point Combinations: An Introduction – May 2024</p> <p>Tuning Fork Therapies Australia: Chakra and Eight Extraordinary Vessels Activations: Tuning Forks with Chinese Medicine Part 1 and 2 – August 18-20, 22-23, 2023 Chinese Medicine Channels & Point Location Activations: Tuning Forks, Chinese Medicine & The Biofield – October 13-15, 2023. Numerology, Tuning Forks, Chinese Medicine & The Biofield – December 1-3, 2023 Spiritual and Emotional Health Activations: Tuning Forks, Chinese Medicine & The Biofield Hybrid – July 2-3, 2024 Chinese Medicine Channels & Point Location Activations: Tuning Forks, Chinese Medicine & The Biofield Hybrid – July 4-5, 2024</p> <p>Australian Acupuncture and Chinese Medicine Association Conference (AACMAC): Accessing the Pericardium to Balance Self-Esteem – August 5, 2023</p> <p>New Zealand Conference (NZAC): Acupuncture Point Combinations: Finding Joy and Contentment – August 27, 2023</p> <p>Rothenberg Congress: Using the Heart Shen and Pericardium to find Contented Joy and to balance Self-Esteem – May 11, 2024</p> <p>Australian Natural Therapies Australia (ANTA) Conferences: The Heart Shen and Pericardium: Their Connection to Mental and Emotional Health – Brisbane, Australia – March 24, 2024 – live workshop – 1 delivery hour. How Confucianism and Daoism helped shape Classical Chinese Medicine – Sydney, Australia – May 26, 2024</p> <p>ICZO: The Five Element Archetypes and Five Spirits: Who Do You Think You Are? – May 3-5, 2024</p> <p>For the period of 1 August 2023-31 July 2024: Total number of hours of delivery = roughly 178.5 hours Total number of hours of research and writing = roughly 873 hours</p>

Contributions to our professions and the HE sector – e.g. external examining, accreditation teams, committee membership etc.

- Director at **Evidence Based Acupuncture**
- Board of Directors of the **Society for Acupuncture Research**
- Scientific Advisor of the **OGKA** (Acupuncture Association in Austria)
- Editorial Board Member of the journals:
 - European Journal of Integrative Medicine
 - Integrative Medicine Research
 - Perspectives on Integrative Medicine
- Medical Acupuncture
- Social Media and Outreach Editor for **EuJIM (Elsevier)**

Social Media Officer (and Early-Career SIG member) of the **Androgen Excess & PCOS Society**

Scholarly and research activities – publications including journal articles, involvement in research, development of clinical practice, presentations etc.

PhD Scholarship at University of Wolverhampton (School of Health and Society, Faculty of Education, Health and Wellbeing, University of Wolverhampton, Wolverhampton WV1 1LY, United Kingdom)

Publications:

- **Polycystic Ovary Syndrome and the Internet of Things: A Scoping Review** Graca, S., Alloh, F., Lagojda, L., Dallaway, A., Kyrou, I., Randeve, H. S., & Kite, C. (2024). Polycystic Ovary Syndrome and the Internet of Things: A Scoping Review. Healthcare (Basel, Switzerland), 12(16), 1671. <https://doi.org/10.3390/healthcare12161671>
- **2 contributions to the international PCOS guidelines:**
- Goldberg, A., Graca, S., Liu, J., Rao, V., Witchel, S. F., Pena, A., Li, R., Mousa, A., Tay, C. T., Pattuwage, L., Teede, H., Yildiz, B. O., & Ee, C. **Anti-obesity pharmacological agents for polycystic ovary syndrome: A systematic review and meta-analysis to inform the 2023 international evidence-based guideline.** Obes Rev. Published online February 14, 2024. doi:10.1111/obr.13704
- Fitz, V., Graca, S., Mahalingaiah, S., Liu, J., Lai, L., Butt, A., Armour, M., Rao, V., Naidoo, D., Maunder, A., Yang, G., Vaddiparthi, V., Witchel, S. F., Pena, A., Spritzer, P. M., Li, R., Tay, C., Mousa, A., Teede, H., & Ee, C. **Inositol for Polycystic Ovary Syndrome: a systematic review and meta-analysis to inform the 2023 update of the International Evidence-Based PCOS Guidelines.** J Clin Endocrinol Metab. Published online January 2, 2024. doi:10.1210/clinem/dgad762

International research collaborations:

- Graca, S., Huemer, M., de Valois, B., Vang, B., & McClure, L. **“Are we there yet?” – Green shoots of progress in acupuncture implementation in healthcare.** European Journal of Integrative Medicine, 102371. doi:10.1016/j.eujim.2024.102371
- Allen SJ, Conboy L, Wasserman TL, et al. **2021 American Society of Acupuncturists Survey on Acupuncturists' Backgrounds, Interests, and Attitudes toward Conducting Research.** Med Acupunct. 2024;36(4):215-226. Published 2024 Aug 21. doi:10.1089/acu.2024.0035
- Huemer M, Graca S, Bitsche S, Hofmann G, Armour M, Pichler M. **Assessing the role and impact of research in clinical practice among acupuncturists in western countries: a multinational cross-sectional survey.** Front Med (Lausanne). 2024;11:1331184. Published 2024 Jul 31. doi:10.3389/fmed.2024.1331184
- Citkovitz C, Graca S, Anderson B, Conboy LA, Gold MA, Hirsch E, Lumiere K, Phelps S, Schnyer RN, Taylor-Swanson L. **Acupuncture Practice-Based Research in the Age of Artificial Intelligence: Developments as of May 2024.** J Integr Complement Med. 2024 Jul 8. doi: 10.1089/jicm.2024.0459.

Scholarly and research activities – publications including journal articles, involvement in research, development of clinical practice, presentations etc.

- Linder, B., Yang, G.-Y., Lumiere, K., Taylor-Swanson, L., Graca, S., & Armour, M. **Collaborative Design of a Chinese Herbal Medicine Case Report Guideline (CHM-CARE)**. European Journal of Integrative Medicine, 102364. doi:10.1016/j.eujim.2024.102364
- Witt, C. M., Graca, S., & Lee, Y. S. **Artificial Intelligence and Acupuncture: A Data-Driven Synergy**. J Integr Complement Med. 2024;30(4):316-318. doi:10.1089/jicm.2024.0109
- Huemer M, Graca S, Bitsche S, Hofmann G, Armour M, Pichler M. **Mapping the clinical practice of traditional, complementary and integrative medicine in oncology in Western countries: A multinational cross-sectional survey**. J Integr Med. Published online December 28, 2023. doi:10.1016/j.joim.2023.12.002

Posters / Abstracts:

- **2 posters at the SAR / RCMI PolyU Research Conference, Hong Kong | May 2024**
- Mapping the clinical practice of traditional, complementary and integrative medicine in oncology in Western countries: A multinational cross-sectional survey
- From Case to Evidence: A Secondary Analysis Approach to Acupuncture Reports
- **Abstract accepted** for the AE-PCOS Society 22nd Annual Meeting in New Zealand (November 7-9, 2024): “Polycystic Ovary Syndrome and the Internet of Things: A Scoping Review”

Presentations:

- 4 presentations at the SAR / RCMI PolyU Research Conference, Hong Kong | May 2024
- “Traditional Chinese Medicine and Menstrual Health: Bridging the Gaps Between West and East”
- “Bridging Basic and Clinical TCM Research to Address Women’s Health”
- “Finding Harmony in Data Sets: TCM Practice-Based Common Outcomes in the West and the East”
- “Bridging Wisdom to Data – Future of AI in Advancing Acupuncture & TCM in Healthcare”
- 1 presentation at the ESHRE Campus, Porto, Portugal | April 2024
- “Clinical insights and evidence-informed acupuncture treatment strategies in assisted reproductive technology”
- Online presentation at Acupuncture Now Australia (17 July 2024)
- Understanding Acupuncture Research - Live Webinar with John McDonald, Claudia Citkovitz, and Sandro Graca
- Online presentation at the XIII Brazilian Congress of Chinese Medicine – 4th International Congress of EBRAMEC College (24 to 30 June, 2024 in Brazil)

Clinical practice updates on acupuncture during IVF

Charity registration number 1081184

Company registration number 02400056 (England and Wales)

**NORTHERN COLLEGE OF ACUPUNCTURE
ANNUAL REPORT AND FINANCIAL STATEMENTS
FOR THE YEAR ENDED 30 JUNE 2024**

NORTHERN COLLEGE OF ACUPUNCTURE

LEGAL AND ADMINISTRATIVE INFORMATION

Trustees	K Wicklow E C Liu H Thomas N Haines D Jay G Webb H Lansdown
Secretary	D Jay
Charity number	1081184
Company number	02400056
Registered office	61 Micklegate York YO1 6LJ
Auditor	Henton & Co LLP 124 Acomb Road York YO24 4EY
Bankers	Santander plc Bridle Road Bootle L30 4GB

NORTHERN COLLEGE OF ACUPUNCTURE

CONTENTS

	Page
Trustees' report	1 - 6
Statement of trustees' responsibilities	7
Independent auditor's report	8 - 10
Statement of financial activities	11
Statement of financial position	12
Statement of cash flows	13
Notes to the financial statements	14 - 25

NORTHERN COLLEGE OF ACUPUNCTURE

TRUSTEES' REPORT (INCLUDING DIRECTORS' REPORT AND STRATEGIC REPORT) FOR THE YEAR ENDED 30 JUNE 2024

The trustees present their annual report and financial statements for the year ended 30 June 2024.

The financial statements have been prepared in accordance with the accounting policies set out in note 1 to the financial statements and comply with the Companies Act 2006, "Accounting and Reporting by Charities: Statement of Recommended Practice applicable to charities preparing their accounts in accordance with the Financial Reporting Standard applicable in the UK and Republic of Ireland (FRS 102) (effective 1 January 2019) and Regulatory advice 9: Accounts direction issued by the Office for Students.

Objectives and activities

The charity's objects are to provide education in the art of acupuncture, traditional Chinese medicine and nutrition and there has been no change in these during the year.

Public benefit

The trustees have paid due regard to guidance issued by the Charity Commission in deciding what activities the charity should undertake.

Strategic report

The description under the headings "Achievements and performance" and "Financial review" meet the company law requirements for the trustees to present a strategic report.

Achievements and performance

Significant activities and achievements against objectives

Strategy Review

The NCA strategy is committed to supporting the NCA Charitable Objectives. The strategy is also committed to the delivery of excellence, to drive reputational value and ensure long term financial sustainability.

The implementation of strategy in 2023-24 was limited by organisational issues including changes in academic faculty and programme leadership, and personal stresses on key colleagues in administration and management.

Performance Review

Despite the challenges that lie ahead for the NCA, the achievements of 2023-24 clearly demonstrate a highly committed and skilled staff base of academics, practitioners, and administrators.

UCO and AECC Merger

Since November 2021, the NCA academic programmes were validated by the University College of Osteopathy (UCO). However, on 1 August this year, the University College of Osteopathy (UCO) and the Anglo-European College of Chiropractic (AECC) merged to become the Health Sciences University (HSU).

Arrangements are in place for the continued validation of NCA academic programmes by the HSU, with continuity of reporting documentation, the validation process, and relationships with (UCO) colleagues.

Academic Programmes

BSc Acupuncture

In 2023-24, we recruited 33 new students onto the BSc Acupuncture programme, split across full time (21 students) and part time (12 students) study options.

We are pleased that 22 students will graduate with a BSc Acupuncture this autumn, with the opportunity to progress as clinical practitioners and/or academics.

MSc Nutrition Science and Practice

In 2023-24, we recruited 20 new students onto the Nutrition Access course, and we enrolled 15 students progressing from the Access course onto the MSc Nutrition Science and Practice programme.

We are pleased that 7 students will graduate with an MSc Nutrition Science and Practice this autumn, with the opportunity to progress as clinical practitioners and/or academics.

NORTHERN COLLEGE OF ACUPUNCTURE

TRUSTEES' REPORT (INCLUDING DIRECTORS' REPORT AND STRATEGIC REPORT) (CONTINUED)

FOR THE YEAR ENDED 30 JUNE 2024

MSc Chinese Herbal Medicine

In 2023-24, we recruited 12 new students onto the MSc Chinese Herbal Medicine programme.

We are pleased that 3 students will graduate with an MSc Nutrition Science and Practice this autumn, with the opportunity to progress as clinical practitioners and/or academics.

NSS Student Feedback

The NSS survey is completed by all final year BSc Acupuncture students, giving valuable feedback on the quality of their academic programme and their overall experience as a student at NCA.

NCA students registered exceptionally high levels of satisfaction for the quality of teaching (98.21), learning opportunities (92.86), assessment and feedback (92.86) and academic support (92.86), but lower levels of satisfaction for organisation and management (67.86), learning resources (85.71) and student voice (71.43).

These NSS scores are consistently higher than the scores for last year 2023, and are above the healthcare sector average.

Student Outcomes

The Student Outcomes data measure institutional performance for student Continuation (with their qualification studies), Completion (of their qualification) and Progression (into professional employment or further studies).

The data is managed by the OfS and offers NCA performance data benchmarked with a minimum performance threshold, and an upper and lower percentage of statistical uncertainty. The available data presents the NCA position on Student Outcomes, between 2018-19 and 2021-22.

The BSc Acupuncture scores consistently higher than the OfS threshold for Continuation, Completion and Progression.

However, the MSc programmes (MSc Nutrition Science and Practice and MSc Chinese Herbal Medicine) score below the OfS threshold for Continuation and Progression, with no data available for Completion.

Practitioners' Hub

The Practitioners' Hub enables members to engage in lectures, open discussion groups, CPD opportunities and closed supervision groups.

Following a drop in subscribing members, and a recent review of the positioning and value of the Hub, the Hub will now be restructured to deliver an enhanced value proposition for subscribing members.

Following approval of the new structure and enhanced value proposition for members, the Hub will be relaunched in November 2024.

Research

Our Research Strategy delivers a strong research profile for NCA and is a significant contributor to our institutional reputation and the value of our qualifications. Currently, our status as an 'uncapped fee' provider with the OfS precludes us applying for research grants from UKRI and the Research Councils, and this limits our ability to develop high-impact research.

However, we are confident that we will be able to generate both commercial and academic research revenues from our research output, which is delivered by both staff and students. As such, we are keen to attract wider recognition for the quality and impact of our research, and to be involved in public and private funded research projects with a variety of stakeholders.

Our Clinical Outcomes Research and Audit project (CORA) gathers clinical outcomes data across the College's teaching clinics using the Measure Yourself Medical Outcomes Profile (MYMOP) questionnaire. This is shared with the research organisation Meaningful Measures (which owns and administers MYMOP) as part of an aggregated dataset made available to researchers for investigation of the effectiveness of our therapies.

NORTHERN COLLEGE OF ACUPUNCTURE

TRUSTEES' REPORT (INCLUDING DIRECTORS' REPORT AND STRATEGIC REPORT) (CONTINUED)

FOR THE YEAR ENDED 30 JUNE 2024

The Support for Publication (SfP) programme supports undergraduate and postgraduate students to publish the results of their research. The package includes support from a supervisor and the Research Ethics Committee, plus a small grant from the College, using legacy funds from the Foundation for Research into Traditional Chinese Medicine (for all students, not only those studying a form of TCM) to cover the costs of writing-up and peer review.

Teaching Clinics

Three teaching clinics operate from the College: acupuncture, nutrition and Chinese herbal medicine. All clinics offer a high quality and professional service to the local community and beyond, with professional treatment at reduced rates. Patient surveys and feedback generally demonstrate a very high level of satisfaction including praise for the students, with occasional suggestions for improvement, which is acted on.

The Acupuncture clinics include the clinic in York, plus two new clinics that were opened in 2024, in Northwich and Southwark in London. The Herbs clinic continues to run completely online, enabling patients to attend from all over the country. The Nutrition clinic remains a hybrid model where the supervisor and students are in York while clients can choose to attend in-person or online.

Our teaching clinics make an invaluable contribution to the training of our students as practitioners, and they enable us to meet one of our charitable objectives by providing treatment to members of the public who would otherwise be deprived of treatment by reason of financial hardship.

Financial review

The 2023-24 accounts show a deficit of £113,391, which is 10.3% of the NCA annual income of £1,099,978.

The accounts for the previous year 2022-23 showed a slim margin of profitability at 0.1% of annual income, indicating early signs of post-covid recovery.

Statement of Financial Activities and the Balance Sheet

For 2023-24, the SoFA showed income of £1,099,978, of which £1,003,603 (91%) was generated from tuition fee income of taught awards.

Of the total expenditure in 2023-24, staffing costs totalled £556,866 (45.9%), lecturers' fees totalled 226,678 (18.7%), university registration fees totalled £67,127 (5.5%), accreditation and validation totalled £47,058 (3.9%), building rental totalled £55,000 (4.5%), and travel and accommodation costs totalled £20,576 (1.7%). As such, the estimated staffing costs associated with the operations of the NCA and the delivery of academic programmes, is approx. £783,544 (64.6%).

The SoFA for 2023-24 shows an operational loss of £113,391, with reserved funds being used to cover this shortfall.

Tuition Fees and Student Loans

Although the NCA has uncapped fee registration status with the OfS, the tuition fees for the BSc Acupuncture were held at the capped fee rate of £9,250 p/a in 2023-24, enabling both full time and part time students to access student loans. Eligible full time students were able to apply for a partial tuition fee loan of £6,165 to part cover the f/t annual tuition fee, whereas eligible part time students were able to apply for a full tuition fee loan of £4,625, to cover the entire p/t annual tuition fee.

For the MSc Nutrition Science and Practice, eligible students were able to apply for a tuition fee loan up to the value of 62% of the total 3-year tuition fee, and for the MSc Chinese Herbal Medicine, eligible students were able to apply for a tuition fee loan up to the value of 74% of the total 3-year tuition fee.

In maintaining uncapped tuition fee status in 2023-24, the NCA was not eligible to benefit from OfS grant funding to support teaching and learning, or to access research funding opportunities available through UKRI and the research councils.

NORTHERN COLLEGE OF ACUPUNCTURE

TRUSTEES' REPORT (INCLUDING DIRECTORS' REPORT AND STRATEGIC REPORT) (CONTINUED)

FOR THE YEAR ENDED 30 JUNE 2024

Reserves policy

At the end of the financial year on 30 June 2024, the unrestricted reserve balance was £186,248 (2023: £298,639), and the restricted reserve balance was £15,860 (2023: £16,860). The restricted reserve funds are committed to supporting students to develop their research projects. The unrestricted reserve funds are in part committed to our student protection plan (which will be redeveloped in 2024-25), with any surplus funds generated, being used to support new initiatives and asset development.

Internal Control

The NCA maintains a risk register with identified risks in relation to business operations, finance, institutional reputation, clinical practice and legal and regulatory compliance. Our risks are regularly reviewed and assessed using a standard model of likelihood against impact. We are committed to developing our data management, analysis and insight capabilities, to ensure accurate monitoring and reporting of both internal and external risks, and enabling the early delivery of interventions to mitigate identified risks.

Plans for future periods

Following a recent change in leadership and the appointment of the new Principal and CEO, together with the support of the Board of Trustees / Directors, the NCA will begin a new phase of investment, development and growth. The NCA will benefit from a clear strategic direction which will support the organisation's Charitable Objectives and deliver quality and value to students, patients, staff and external stakeholders.

We will develop a new strategy 2025-30, which seeks to:

- Enhance our value proposition for students, and develop new curriculum, pathways and pedagogical delivery models, to respond to the needs and aspirations of a wider portfolio of student markets.
- Ensure that our curriculum, pedagogical models and clinical practice are informed by research, and are subjected rigorous evaluation and continuous improvement.
- Enhance our value proposition for colleagues, ensuring transparency and equality across conditions of service, enabling opportunities for colleagues to collaborate and innovate, and ensuring that responsibility and accountability are understood, and are supported by professional development opportunities.
- Expand the reach of our clinical services, ensuring more opportunities for our students to experience and develop their clinical practice skills, and delivering a wider platform of services to patients.
- Ensure that our alumni students have continued access to professional development opportunities, strengthening our credibility and relevance across multiple health care professions.
- Develop and engage with a global network of stakeholders, to ensure alignment and continued relevance of our research, academic programmes and clinical practice, deliver international mobility opportunities for our students, widen our marketing reach to attract international students onto our online academic programmes, and strengthen our research through collaborative international activity.
- To nominate one or more Director(s) to the Hearing Committee of the appeals stage of the student grievance procedure or of the Student disciplinary procedures, when appropriate.

* Including partnerships and collaboration, recruitment and retention of students, provision of information, quality assurance and research integrity.

** External activities with substantial potential for financial or reputational risk, including fund-raising, donations, corporate sponsored research, subsidiaries, partnerships and other commercial activities.

NORTHERN COLLEGE OF ACUPUNCTURE

TRUSTEES' REPORT (INCLUDING DIRECTORS' REPORT AND STRATEGIC REPORT) (CONTINUED)

FOR THE YEAR ENDED 30 JUNE 2024

Structure, governance and management

The charity is a company limited by guarantee and accordingly has no share capital.

The trustees, who are also the directors for the purpose of company law, and who served during the year and up to the date of signature of the financial statements were:

K Wicklow

E C Liu

H Thomas

N Haines

D Jay

G Webb

H Lansdown

T M Horta Reis da Silva

(Resigned 12 February 2024)

Recruitment and appointment of trustees

The serving trustees have the power to co opt new trustees. New trustees are assisted through their induction by existing trustees and officials of the charity. None of the trustees has any beneficial interest in the company. All of the trustees are members of the company and guarantee to contribute £5 in the event of a winding up.

Other matters

The duties of the Board of Directors/Trustees are:

- To ensure the College's sustainability by working with the Principal and management team to agree the College's vision/philosophy, and strategic direction.
- To ensure that the vision and ethos of the College are sustained and that the College works to achieve its strategic aims and charitable objectives.
- To ensure that the long-term viability of the College is maintained through monitoring the performance of the College, including financial and managerial aspects.
- To monitor the professional, commercial and reputational risks facing the College, ensuring that there are effective systems of control and risk management.
- To protect the reputation of the College by being assured that clear regulations, policies and procedures that adhere to legislative and regulatory requirements are in place, ethical in nature, and followed.
- To uphold the College's Code of Practice on Freedom of Speech and to ensure that academic staff have freedom within the law to question and test received wisdom, and to put forward new ideas and controversial or unpopular opinions, without placing themselves in jeopardy of losing their jobs and privileges they have at the College.
- To receive assurance that academic governance is effective by working with the Academic Board to maintain academic and research standards, ensure enhancement of teaching, learning and assessment, and ensure that academic risks are effectively managed*.
- To promote equality and diversity throughout the institution, including in relation to its own operation.
- To work with the Principal and management team to be assured that effective control and due diligence take place in relation to institutionally significant external activities**.
- To review demands made by the processes of university validation and professional accreditation, assess the resource implications of these demands, and determine what response the College should make.
- To ensure that the College's governance structures and processes are fit for purpose by referencing them against recognised standards of good practice, including the HE Code of Governance.
- To appoint the Principal, support and to advise him/her in delivery of the College's objectives, and terminate his/her contract as appropriate.
- To appoint either two Directors or one Director and one senior member of the College staff to undertake appraisal of the Principal.
- To receive requests for mediation from staff and implement mediation processes as appropriate, when the College's standard processes (including the "sorting out" process) have been used without achieving a satisfactory outcome.
- To receive appeals at the appeal stage of the staff disciplinary and grievance procedures, and to nominate a Director to decide on the appeal.

NORTHERN COLLEGE OF ACUPUNCTURE

TRUSTEES' REPORT (INCLUDING DIRECTORS' REPORT AND STRATEGIC REPORT) (CONTINUED)

FOR THE YEAR ENDED 30 JUNE 2024

Auditor

In accordance with the company's articles, a resolution proposing that Henton & Co LLP be reappointed as auditor of the company will be put at a General Meeting.

Disclosure of information to auditor

Each of the trustees has confirmed that there is no information of which they are aware which is relevant to the audit, but of which the auditor is unaware. They have further confirmed that they have taken appropriate steps to identify such relevant information and to establish that the auditor is aware of such information.

The trustees' report, including the strategic report, was approved by the Board of Trustees.



H Thomas
Trustee

17 October 2024

NORTHERN COLLEGE OF ACUPUNCTURE

STATEMENT OF TRUSTEES' RESPONSIBILITIES

FOR THE YEAR ENDED 30 JUNE 2024

The trustees, who are also the directors of Northern College of Acupuncture for the purpose of company law, are responsible for preparing the Trustees' Report and the financial statements in accordance with applicable law and United Kingdom Accounting Standards (United Kingdom Generally Accepted Accounting Practice).

Company Law requires the trustees to prepare financial statements for each financial year which give a true and fair view of the state of affairs of the charity and of the incoming resources and application of resources, including the income and expenditure, of the charitable company for that year.

In preparing these financial statements, the trustees are required to:

- select suitable accounting policies and then apply them consistently;
- observe the methods and principles in the Charities SORP;
- make judgements and estimates that are reasonable and prudent;
- state whether applicable UK Accounting Standards have been followed, subject to any material departures disclosed and explained in the financial statements; and
- prepare the financial statements on the going concern basis unless it is inappropriate to presume that the charity will continue in operation.

The trustees are responsible for keeping adequate accounting records that disclose with reasonable accuracy at any time the financial position of the charity and enable them to ensure that the financial statements comply with the Companies Act 2006. They are also responsible for safeguarding the assets of the charity and hence for taking reasonable steps for the prevention and detection of fraud and other irregularities.

NORTHERN COLLEGE OF ACUPUNCTURE

INDEPENDENT AUDITOR'S REPORT

TO THE TRUSTEES OF NORTHERN COLLEGE OF ACUPUNCTURE

Opinion

We have audited the financial statements of Northern College of Acupuncture (the 'charity') for the year ended 30 June 2024 which comprise the statement of financial activities, the statement of financial position, the statement of cash flows and the notes to the financial statements, including a summary of significant accounting policies. The financial reporting framework that has been applied in their preparation is applicable law and United Kingdom Accounting Standards, including Financial Reporting Standard 102 *The Financial Reporting Standard applicable in the UK and Republic of Ireland* (United Kingdom Generally Accepted Accounting Practice).

In our opinion, the financial statements:

- give a true and fair view of the state of the charitable company's affairs as at 30 June 2024 and of its incoming resources and application of resources, for the year then ended;
- have been properly prepared in accordance with United Kingdom Generally Accepted Accounting Practice; and
- have been prepared in accordance with the requirements of the Companies Act 2006; and
- in all material aspects meet the requirements of the OfS's accounts direction.

Basis for opinion

We conducted our audit in accordance with International Standards on Auditing (UK) (ISAs (UK)) and applicable law. Our responsibilities under those standards are further described in the *Auditor's responsibilities for the audit of the financial statements* section of our report. We are independent of the charity in accordance with the ethical requirements that are relevant to our audit of the financial statements in the UK, including the FRC's Ethical Standard, and we have fulfilled our other ethical responsibilities in accordance with these requirements. We believe that the audit evidence we have obtained is sufficient and appropriate to provide a basis for our opinion.

Conclusions relating to going concern

In auditing the financial statements, we have concluded that the trustees' use of the going concern basis of accounting in the preparation of the financial statements is appropriate.

Based on the work we have performed, we have not identified any material uncertainties relating to events or conditions that, individually or collectively, may cast significant doubt on the charity's ability to continue as a going concern for a period of at least twelve months from when the financial statements are authorised for issue.

Our responsibilities and the responsibilities of the trustees with respect to going concern are described in the relevant sections of this report.

Other information

The other information comprises the information included in the annual report other than the financial statements and our auditor's report thereon. The trustees are responsible for the other information contained within the annual report. Our opinion on the financial statements does not cover the other information and we do not express any form of assurance conclusion thereon. Our responsibility is to read the other information and, in doing so, consider whether the other information is materially inconsistent with the financial statements or our knowledge obtained in the course of the audit, or otherwise appears to be materially misstated. If we identify such material inconsistencies or apparent material misstatements, we are required to determine whether this gives rise to a material misstatement in the financial statements themselves. If, based on the work we have performed, we conclude that there is a material misstatement of this other information, we are required to report that fact.

We have nothing to report in this regard.

Matters on which we are required to report by exception

We have nothing to report in respect of the following matters in relation to which the Charities (Accounts and Reports) Regulations 2008 require us to report to you if, in our opinion:

- the information given in the financial statements is inconsistent in any material respect with the trustees' report; or
- sufficient accounting records have not been kept; or
- the financial statements are not in agreement with the accounting records; or
- we have not received all the information and explanations we require for our audit.

NORTHERN COLLEGE OF ACUPUNCTURE

INDEPENDENT AUDITOR'S REPORT (CONTINUED)

TO THE TRUSTEES OF NORTHERN COLLEGE OF ACUPUNCTURE

Responsibilities of trustees

As explained more fully in the statement of trustees' responsibilities, the trustees, who are also the directors of the charity for the purpose of company law, are responsible for the preparation of the financial statements and for being satisfied that they give a true and fair view, and for such internal control as the trustees determine is necessary to enable the preparation of financial statements that are free from material misstatement, whether due to fraud or error. In preparing the financial statements, the trustees are responsible for assessing the charity's ability to continue as a going concern, disclosing, as applicable, matters related to going concern and using the going concern basis of accounting unless the trustees either intend to liquidate the charitable company or to cease operations, or have no realistic alternative but to do so.

Auditor's responsibilities for the audit of the financial statements

We have been appointed as auditor under section 144 of the Charities Act 2011 and report in accordance with the Act and relevant regulations made or having effect thereunder.

Our objectives are to obtain reasonable assurance about whether the financial statements as a whole are free from material misstatement, whether due to fraud or error, and to issue an auditor's report that includes our opinion. Reasonable assurance is a high level of assurance but is not a guarantee that an audit conducted in accordance with ISAs (UK) will always detect a material misstatement when it exists. Misstatements can arise from fraud or error and are considered material if, individually or in the aggregate, they could reasonably be expected to influence the economic decisions of users taken on the basis of these financial statements.

Irregularities, including fraud, are instances of non-compliance with laws and regulations. We design procedures in line with our responsibilities, outlined above, to detect material misstatements in respect of irregularities, including fraud. The extent to which our procedures are capable of detecting irregularities, including fraud, is detailed below.

We have obtained an understanding of the legal and regulatory framework applicable to the Charity through discussions with senior management and review of the regulatory framework of any professional or membership bodies that the Charity is a part of. The Charity uses third parties to ensure that it remains up to date with changes and to review compliance with all its legal and regulatory requirements. In making our assessment of detecting irregularities, including fraud, we have discussed the issue with management who have advised that there have been no changes and the Charity remains compliant with its legal and regulatory requirement. Nothing has been brought to light in completing our audit work that contradicts this.

The laws and regulations identified as significant include Companies Act 2006, Charities Act 2011, those produced by the Office for Students, health and safety legislation, employment laws, data protection, and relevant tax laws.

In making our assessment of the susceptibility of the Charity's financial statements to material misstatement, we have also considered how fraud might occur. Our risk assessment procedures include: enquiry of members and management to understand the high level policies and procedures in place to prevent and detect fraud and reading Board minutes.

As a result of these procedures we identified the greatest potential for fraud in the following areas:

- revenue recognition and in particular the risk that revenue is recorded in the wrong period; and
- subjective accounting estimates.

Both risks arise due to a potential desire to present stronger results. As required by auditing standards we also identified and addressed the risk of management override of controls.

We performed the following procedures to address the risks of fraud identified:

- reviewing financial statement disclosures and testing to supporting documentation;
- auditing the risk of management override of controls, including through testing journal entries and other adjustments for appropriateness, and evaluating the business rationale of significant transactions outside the normal course of business;
- assessing significant accounting estimates for bias; and
- testing the timing and recognition of income and, in particular, that it was appropriately recognised.

NORTHERN COLLEGE OF ACUPUNCTURE

INDEPENDENT AUDITOR'S REPORT (CONTINUED)

TO THE TRUSTEES OF NORTHERN COLLEGE OF ACUPUNCTURE

No instances of material misstatement or fraud have been noted in the audit of the accounts for the year ended 30 June 2024.

The engagement partner has assessed that the engagement team has the appropriate competence and capabilities to identify or recognise non-compliance with laws and regulations, affected by the inherent difficulty in detecting irregularities, the effectiveness of the Charity's controls, and the nature, timing and extent of the audit procedures performed. No matters of non-compliance with laws and regulations and fraud were identified by the engagement team.

Our audit procedures were designed to respond to risks of material misstatement in the financial statements, recognising that the risk of not detecting a material misstatement due to fraud is higher than the risk of not detecting one from error, as fraud may involve deliberate concealment by, for example, forgery, misrepresentations or through collusion. There are inherent limitations in the audit procedures performed and the further removed non-compliance with laws and regulations is from the events and transactions reflected in the financial statements, the less likely we are to become aware of it.

A further description of our responsibilities is available on the Financial Reporting Council's website at: <https://www.frc.org.uk/auditorsresponsibilities>. This description forms part of our auditor's report.

Use of our report

This report is made solely to the charity's trustees, as a body, in accordance with part 4 of the Charities (Accounts and Reports) Regulations 2008. Our audit work has been undertaken so that we might state to the charity's trustees those matters we are required to state to them in an auditor's report and for no other purpose. To the fullest extent permitted by law, we do not accept or assume responsibility to anyone other than the charity and the charity's trustees as a body, for our audit work, for this report, or for the opinions we have formed.

Brett Davis (Senior Statutory Auditor)
for and on behalf of Henton & Co LLP

Chartered Accountants
Statutory Auditor
124 Acomb Road
York
YO24 4EY

.....

Henton & Co LLP is eligible for appointment as auditor of the charity by virtue of its eligibility for appointment as auditor of a company under section 1212 of the Companies Act 2006.

NORTHERN COLLEGE OF ACUPUNCTURE

STATEMENT OF FINANCIAL ACTIVITIES INCLUDING INCOME AND EXPENDITURE ACCOUNT

FOR THE YEAR ENDED 30 JUNE 2024

		Unrestricted funds 2024 £	Restricted funds 2024 £	Total 2024 £	Unrestricted funds 2023 £	Restricted funds 2023 £	Total 2023 £
	Notes						
Income from:							
Charitable activities	3	1,086,982	-	1,086,982	1,046,158	-	1,046,158
Investments	4	12,996	-	12,996	3,200	-	3,200
Total income		1,099,978	-	1,099,978	1,049,358	-	1,049,358
Expenditure on:	5						
Charitable activities	6	1,212,369	1,000	1,213,369	1,037,482	1,845	1,039,327
Total expenditure		1,212,369	1,000	1,213,369	1,037,482	1,845	1,039,327
Net income/(expenditure) and movement in funds		(112,391)	(1,000)	(113,391)	11,876	(1,845)	10,031
Reconciliation of funds:							
Fund balances at 1 July 2023		298,639	16,860	315,499	286,763	18,705	305,468
Fund balances at 30 June 2024		186,248	15,860	202,108	298,639	16,860	315,499

The statement of financial activities includes all gains and losses recognised in the year. All income and expenditure derive from continuing activities.

NORTHERN COLLEGE OF ACUPUNCTURE

STATEMENT OF FINANCIAL POSITION

AS AT 30 JUNE 2024

	Notes	2024 £	£	2023 £	£
Fixed assets					
Tangible assets	12		14,291		13,951
Current assets					
Stocks	13	3,600		3,600	
Debtors	14	38,818		42,671	
Cash at bank and in hand		354,998		470,125	
		<u>397,416</u>		<u>516,396</u>	
Creditors: amounts falling due within one year	15	<u>(209,599)</u>		<u>(214,848)</u>	
Net current assets			187,817		301,548
Total assets less current liabilities			<u>202,108</u>		<u>315,499</u>
Income funds					
Restricted funds	17		15,860		16,860
Unrestricted funds			186,248		298,639
			<u>202,108</u>		<u>315,499</u>

The company is entitled to the exemption from the audit requirement contained in section 477 of the Companies Act 2006, for the year ended 30 June 2024, although an audit has been carried out under section 144 of the Charities Act 2011.

The directors acknowledge their responsibilities for complying with the requirements of the Companies Act 2006 with respect to accounting records and the preparation of financial statements.

The members have not required the company to obtain an audit of its financial statements under the requirements of the Companies Act 2006, for the year in question in accordance with section 476.

These financial statements have been prepared in accordance with the provisions applicable to companies subject to the small companies regime.

The financial statements were approved by the Trustees on 17 October 2024

D Jay
Trustee

E Heathcote
Accountable Officer

Company registration number 02400056

NORTHERN COLLEGE OF ACUPUNCTURE

STATEMENT OF CASH FLOWS

FOR THE YEAR ENDED 30 JUNE 2024

	Notes	2024 £	£	2023 £	£
Cash flows from operating activities					
Cash (absorbed by)/generated from operations	22		(123,176)		5,228
Investing activities					
Purchase of tangible fixed assets		(4,947)		(3,298)	
Investment income received		12,996		3,200	
Net cash generated from/(used in) investing activities			8,049		(98)
Net cash used in financing activities			-		-
Net (decrease)/increase in cash and cash equivalents			(115,127)		5,130
Cash and cash equivalents at beginning of year			470,125		464,995
Cash and cash equivalents at end of year			354,998		470,125

NORTHERN COLLEGE OF ACUPUNCTURE

NOTES TO THE FINANCIAL STATEMENTS

FOR THE YEAR ENDED 30 JUNE 2024

1 Accounting policies

Charity information

Northern College of Acupuncture is a private company limited by guarantee incorporated in England and Wales. The registered office is 61 Micklegate, York, YO1 6LJ.

1.1 Accounting convention

The financial statements have been prepared in accordance with the the Companies Act 2006, and "Accounting and Reporting by Charities: Statement of Recommended Practice applicable to charities preparing their accounts in accordance with the Financial Reporting Standard applicable in the UK and Republic of Ireland (FRS 102) (effective 1 January 2019) and Regulatory advice 9: Accounts direction issued by the Office for Students. The charity is a Public Benefit Entity as defined by FRS 102.

The financial statements are prepared in sterling, which is the functional currency of the charity. Monetary amounts in these financial statements are rounded to the nearest £.

The financial statements have been prepared under the historical cost convention. The principal accounting policies adopted are set out below.

1.2 Going concern

At the time of approving the financial statements, the trustees have a reasonable expectation that the charity has adequate resources to continue in operational existence for the foreseeable future. Thus the trustees continue to adopt the going concern basis of accounting in preparing the financial statements.

1.3 Charitable funds

Unrestricted funds are available for use at the discretion of the trustees in furtherance of their charitable objectives.

Restricted funds are subject to specific conditions by donors or grantors as to how they may be used. The purposes and uses of the restricted funds are set out in the notes to the financial statements.

1.4 Income

Income is recognised when the charity is legally entitled to it after any performance conditions have been met, the amounts can be measured reliably, and it is probable that income will be received.

Fee income is recognised in the period in which students are studying.

Clinic receipts are recognised in the period in which the service is provided.

Grants for immediate expenditure are accounted for when they become receivable. Grants received for specific purposes are treated as restricted funds. Grants which are received for future accounting periods are deferred and recognised in those periods.

Income from the sale of goods is recognised when receivable by the charity.

Rent is recognised when receivable by the charity.

Interest is recognised when receivable by the charity.

NORTHERN COLLEGE OF ACUPUNCTURE

NOTES TO THE FINANCIAL STATEMENTS (CONTINUED)

FOR THE YEAR ENDED 30 JUNE 2024

1 Accounting policies

(Continued)

1.5 Expenditure

Expenditure is recognised on an accruals basis as a liability is incurred and is classified under the headings of the statement of financial activities to which it relates:

Expenditure on charitable activities includes all costs incurred by a charity in undertaking activities that further its charitable aims for the benefit of its beneficiaries, including those support costs and costs relating to the governance of the charity apportioned to charitable activities.

All costs are allocated to expenditure categories reflecting the use of the resource. Direct costs attributable to a single activity are allocated directly to that activity. Shared costs are apportioned between the activities they contribute to on a reasonable, justifiable and consistent basis.

1.6 Tangible fixed assets

Tangible fixed assets are initially measured at cost and subsequently measured at cost or valuation, net of depreciation and any impairment losses.

Depreciation is recognised so as to write off the cost or valuation of assets less their residual values over their useful lives on the following bases:

Fixtures and fittings	15%/20%/25% reducing balance
-----------------------	------------------------------

The gain or loss arising on the disposal of an asset is determined as the difference between the sale proceeds and the carrying value of the asset, and is recognised in the statement of financial activities.

1.7 Impairment of fixed assets

At each reporting end date, the charity reviews the carrying amounts of its tangible assets to determine whether there is any indication that those assets have suffered an impairment loss. If any such indication exists, the recoverable amount of the asset is estimated in order to determine the extent of the impairment loss (if any).

1.8 Stocks

Stocks are stated at the lower of cost and estimated selling price less costs to complete and sell. Cost comprises direct materials and, where applicable, direct labour costs and those overheads that have been incurred in bringing the stocks to their present location and condition. Items held for distribution at no or nominal consideration are measured the lower of replacement cost and cost.

Net realisable value is the estimated selling price less all estimated costs of completion and costs to be incurred in marketing, selling and distribution.

1.9 Cash and cash equivalents

Cash and cash equivalents include cash in hand, deposits held at call with banks, other short-term liquid investments with original maturities of three months or less, and bank overdrafts. Bank overdrafts are shown within borrowings in current liabilities.

NORTHERN COLLEGE OF ACUPUNCTURE

NOTES TO THE FINANCIAL STATEMENTS (CONTINUED)

FOR THE YEAR ENDED 30 JUNE 2024

1 Accounting policies

(Continued)

1.10 Financial instruments

The charity has elected to apply the provisions of Section 11 'Basic Financial Instruments' and Section 12 'Other Financial Instruments Issues' of FRS 102 to all of its financial instruments.

Financial instruments are recognised in the charity's balance sheet when the charity becomes party to the contractual provisions of the instrument.

Financial assets and liabilities are offset, with the net amounts presented in the financial statements, when there is a legally enforceable right to set off the recognised amounts and there is an intention to settle on a net basis or to realise the asset and settle the liability simultaneously.

Basic financial assets

Basic financial assets, which include debtors and cash and bank balances, are initially measured at transaction price including transaction costs and are subsequently carried at amortised cost using the effective interest method unless the arrangement constitutes a financing transaction, where the transaction is measured at the present value of the future receipts discounted at a market rate of interest. Financial assets classified as receivable within one year are not amortised.

Basic financial liabilities

Basic financial liabilities, including creditors and bank loans are initially recognised at transaction price unless the arrangement constitutes a financing transaction, where the debt instrument is measured at the present value of the future payments discounted at a market rate of interest. Financial liabilities classified as payable within one year are not amortised.

Debt instruments are subsequently carried at amortised cost, using the effective interest rate method.

Trade creditors are obligations to pay for goods or services that have been acquired in the ordinary course of operations from suppliers. Amounts payable are classified as current liabilities if payment is due within one year or less. If not, they are presented as non-current liabilities. Trade creditors are recognised initially at transaction price and subsequently measured at amortised cost using the effective interest method.

Derecognition of financial liabilities

Financial liabilities are derecognised when the charity's contractual obligations expire or are discharged or cancelled.

1.11 Employee benefits

The cost of any unused holiday entitlement is recognised in the period in which the employee's services are received.

Termination benefits are recognised immediately as an expense when the charity is demonstrably committed to terminate the employment of an employee or to provide termination benefits.

1.12 Retirement benefits

Payments to defined contribution retirement benefit schemes are charged as an expense as they fall due.

1.13 Creditors and provisions

Creditors and provisions are recognised where the charity has a present obligation resulting from a past event that will result in the transfer of funds to a third party and the amount due to settle the obligation can be measured or estimated reliably.

NORTHERN COLLEGE OF ACUPUNCTURE

NOTES TO THE FINANCIAL STATEMENTS (CONTINUED)

FOR THE YEAR ENDED 30 JUNE 2024

2 Critical accounting estimates and judgements

In the application of the charity's accounting policies, the trustees are required to make judgements, estimates and assumptions about the carrying amount of assets and liabilities that are not readily apparent from other sources. The estimates and associated assumptions are based on historical experience and other factors that are considered to be relevant. Actual results may differ from these estimates.

The estimates and underlying assumptions are reviewed on an ongoing basis. Revisions to accounting estimates are recognised in the period in which the estimate is revised where the revision affects only that period, or in the period of the revision and future periods where the revision affects both current and future periods.

3 Income from charitable activities

	Teaching fees 2024 £	Clinic receipts 2024 £	Sales of books 2024 £	Practitioner hub 2024 £	Total 2024 £	Total 2023 £
Charitable activities	1,003,603	64,756	5,015	13,608	1,086,982	1,046,158
Analysis by fund						
Unrestricted funds	1,003,603	64,756	5,015	13,608	1,086,982	1,046,158

Note on grant and fee income:

	2023-24	2022-23
Grant income from the OfS	0	0
Grant income from other bodies	0	0
Fee income for taught awards (exclusive of VAT)	£960,824	£937,228
Fee income for research awards (exclusive of VAT)	N/A	N/A
Fee income from non-qualifying courses (exclusive of VAT)	£42,779	£16,455
Total grant and fee income	£1,003,603	£953,683

NORTHERN COLLEGE OF ACUPUNCTURE

NOTES TO THE FINANCIAL STATEMENTS (CONTINUED)

FOR THE YEAR ENDED 30 JUNE 2024

3 Income from charitable activities (Continued)

Previous year:	Teaching fees 2023 £	Clinic receipts 2023 £	Sales of books 2023 £	Practitioner hub 2023 £	Total 2023 £
Charitable activities	953,683	59,603	3,630	29,242	1,046,158
Analysis by fund					
Unrestricted funds	953,683	59,603	3,630	29,242	1,046,158

4 Income from investments

	Unrestricted funds 2024 £	Unrestricted funds 2023 £
Rental income	10,300	1,693
Interest receivable	2,696	1,507
	12,996	3,200

5 Details of grant and fee income

	2024 £	2023 £
The source of grants and fee income is as follows:		
Fee income for taught awards	1,003,603	953,683
Total grant and fee income	1,003,603	953,683

NORTHERN COLLEGE OF ACUPUNCTURE

NOTES TO THE FINANCIAL STATEMENTS (CONTINUED)

FOR THE YEAR ENDED 30 JUNE 2024

6 Expenditure on charitable activities

	College & clinic 2024 £	College & clinic 2023 £
Direct costs		
Staff costs	556,866	537,155
Depreciation and impairment	4,607	4,465
Needles and moxa	8,015	3,841
Laundry and sharpz	1,263	639
Herbs	10,772	7,608
Lecturer fees	226,678	183,603
Lecturers other	23,236	14,370
University registration fees	67,127	24,422
Teaching aids	2,166	2,387
Accreditation and validation	47,058	43,954
Library and e learning	14,076	13,292
Books resale	4,116	1,202
Research	1,211	1,111
Other charitable expenditure	235,456	197,228
	<u>1,202,647</u>	<u>1,035,277</u>
Share of support and governance costs (see note 7)		
Governance	10,722	4,050
	<u>1,213,369</u>	<u>1,039,327</u>
Analysis by fund		
Unrestricted funds	1,212,369	1,037,482
Restricted funds	1,000	1,845
	<u>1,213,369</u>	<u>1,039,327</u>

7 Support costs allocated to activities

	2024 £	2023 £
Governance costs	<u>10,722</u>	<u>4,050</u>
Analysed between:		
College & clinic	<u>10,722</u>	<u>4,050</u>

NORTHERN COLLEGE OF ACUPUNCTURE

NOTES TO THE FINANCIAL STATEMENTS (CONTINUED)

FOR THE YEAR ENDED 30 JUNE 2024

7 Support costs allocated to activities (Continued)

	2024 £	2023 £
Governance costs comprise:		
Audit fees	4,410	4,050
Legal and professional	6,312	-
	<u>10,722</u>	<u>4,050</u>

8 Net movement in funds

	2024 £	2023 £
--	-----------	-----------

The net movement in funds is stated after charging/(crediting):

Fees payable for the audit of the charity's financial statements	4,410	4,050
Depreciation of owned tangible fixed assets	4,607	4,465
	<u>4,607</u>	<u>4,465</u>

9 Trustees

None of the trustees (or any persons connected with them) received any remuneration or benefits from the charity during the year. No trustee expenses have been incurred by the charity.

10 Employees

The average monthly number of employees during the year was:

	2024 Number	2023 Number
Teaching	11	12
Administration	17	18
	<u>28</u>	<u>30</u>

	2024 £	2023 £
Employment costs		
Wages and salaries	513,472	497,784
Social security costs	33,617	30,307
Other pension costs	9,777	9,064
	<u>556,866</u>	<u>537,155</u>

NORTHERN COLLEGE OF ACUPUNCTURE

NOTES TO THE FINANCIAL STATEMENTS (CONTINUED)

FOR THE YEAR ENDED 30 JUNE 2024

10 Employees

(Continued)

The number of employees whose annual remuneration was more than £60,000 is as follows:

	2024 Number	2023 Number
£60,001 to £70,000	1	-

The head of the College received a basic salary of £60,419 (2023 : £58,656) and pension contributions of £1,321 (2023 : £1,321).

The Principal's basic salary is 1.7 times (2023: 1.8 times) the median pay of staff, where the median pay is calculated on a full-time equivalent basis for the salaries paid by the provider to its staff. The Principal's total remuneration is 1.7 times (2023: 1.8 times) the median total remuneration of staff, where the median total remuneration is calculated on a full-time equivalent basis for the total remuneration paid by the charity to its staff.

There were no payments to the Principal in lieu of pension contributions, of dividends, of performance-related pay or other bonuses, and no other taxable or non-taxable benefits or other remuneration. There were no salary sacrifice arrangements. All pension contributions are identified above.

Justification of the Principal's remuneration

The College is a small HE provider, with around 200 students, and is also a registered charity. As is usual for small providers, the Principal's key tasks cover a wide range from the strategic to the operational, and they include financial, professional and legal responsibilities as well as involvement in marketing and managing the senior academic team.

The Principal has been in post for 25 years. Under his leadership the College has expanded its provision from one MSc course to five MSc courses and one BSc course, has survived substantial economic challenges, especially the 2008 banking crisis, has built up its financial reserves, and enhanced its reputation as a quality provider with a strong commitment to research. In recent years the College has had successful reports from the Quality Assurance Agency for HE and been registered with the Office for Students. In the National Student Survey the College consistently achieves high scores for overall student satisfaction and generally scores which are above the sector averages.

The Principal's performance is judged via an annual performance review conducted by two members of the Board of Directors/Trustees, and on an ongoing basis at regular meetings of the Board of Directors/Trustees.

Compensation for loss of office

There were no payments as compensation for loss of office to any staff member during the year.

11 Taxation

The charity is exempt from taxation on its activities because all its income is applied for charitable purposes.

NORTHERN COLLEGE OF ACUPUNCTURE

NOTES TO THE FINANCIAL STATEMENTS (CONTINUED)

FOR THE YEAR ENDED 30 JUNE 2024

12 Tangible fixed assets

	Fixtures and fittings £
Cost	
At 1 July 2023	130,053
Additions	4,947
At 30 June 2024	135,000
Depreciation and impairment	
At 1 July 2023	116,102
Depreciation charged in the year	4,607
At 30 June 2024	120,709
Carrying amount	
At 30 June 2024	14,291
At 30 June 2023	13,951

13 Stocks

	2024 £	2023 £
Raw materials and consumables	3,600	3,600

14 Debtors

	2024 £	2023 £
Amounts falling due within one year:		
Trade debtors	4,182	13,231
Other debtors	1,451	420
Prepayments and accrued income	33,185	29,020
	38,818	42,671

15 Creditors: amounts falling due within one year

	2024 £	2023 £
Other taxation and social security	4,650	7,989
Trade creditors	38,539	24,143
Other creditors	9,299	7,391
Accruals and deferred income	157,111	175,325
	209,599	214,848

NORTHERN COLLEGE OF ACUPUNCTURE

NOTES TO THE FINANCIAL STATEMENTS (CONTINUED)

FOR THE YEAR ENDED 30 JUNE 2024

16 Retirement benefit schemes

	2024	2023
Defined contribution schemes	£	£
Charge to profit or loss in respect of defined contribution schemes	9,777	9,064

The charity operates a defined contribution pension scheme for all qualifying employees. The assets of the scheme are held separately from those of the charity in an independently administered fund.

17 Restricted funds

The restricted funds of the charity comprise the unexpended balances of donations and grants held on trust subject to specific conditions by donors as to how they may be used.

	At 1 July 2023	Resources expended	At 30 June 2024
	£	£	£
Supporting students	16,860	(1,000)	15,860
Previous year:	At 1 July 2022	Resources expended	At 30 June 2023
	£	£	£
Supporting students	18,705	(1,845)	16,860

18 Unrestricted funds

The unrestricted funds of the charity comprise the unexpended balances of donations and grants which are not subject to specific conditions by donors and grantors as to how they may be used. These include designated funds which have been set aside out of unrestricted funds by the trustees for specific purposes.

	At 1 July 2023	Incoming resources	Resources expended	At 30 June 2024
	£	£	£	£
General funds	298,639	1,099,978	(1,212,369)	186,248
Previous year:	At 1 July 2022	Incoming resources	Resources expended	At 30 June 2023
	£	£	£	£
General funds	286,763	1,049,358	(1,037,482)	298,639

NORTHERN COLLEGE OF ACUPUNCTURE

NOTES TO THE FINANCIAL STATEMENTS (CONTINUED)

FOR THE YEAR ENDED 30 JUNE 2024

19 Analysis of net assets between funds

	Unrestricted funds 2024 £	Restricted funds 2024 £	Total 2024 £
At 30 June 2024:			
Tangible assets	14,291	-	14,291
Current assets/(liabilities)	171,957	15,860	187,817
	<u>186,248</u>	<u>15,860</u>	<u>202,108</u>
	Unrestricted funds 2023 £	Restricted funds 2023 £	Total 2023 £
At 30 June 2023:			
Tangible assets	13,951	-	13,951
Current assets/(liabilities)	284,688	16,860	301,548
	<u>298,639</u>	<u>16,860</u>	<u>315,499</u>

20 Operating lease commitments

Lessee

At the reporting end date the charity had outstanding commitments for future minimum lease payments under non-cancellable operating leases, which fall due as follows:

	2024 £	2023 £
Within one year	55,000	50,000
Between two and five years	220,000	220,000
In over five years	55,000	110,000
	<u>330,000</u>	<u>380,000</u>

21 Related party transactions

There were no disclosable related party transactions during the year (2023 - none).

NORTHERN COLLEGE OF ACUPUNCTURE

NOTES TO THE FINANCIAL STATEMENTS (CONTINUED)

FOR THE YEAR ENDED 30 JUNE 2024

22	Cash generated from operations	2024	2023
		£	£
	(Deficit)/surplus for the year	(113,391)	10,031
	Adjustments for:		
	Investment income recognised in statement of financial activities	(12,996)	(3,200)
	Depreciation and impairment of tangible fixed assets	4,607	4,465
	Movements in working capital:		
	Decrease in debtors	3,853	2,644
	(Decrease) in creditors	(5,249)	(8,712)
	Cash (absorbed by)/generated from operations	(123,176)	5,228

23 Analysis of changes in net funds

The charity had no material debt during the year.

Henton & Co LLP
Chartered Accountants
Statutory Auditors
124 Acomb Road
York
YO24 4EY

17 October 2024

Dear Sirs

During the course of your audit of our financial statements for the year ending 30 June 2024, the following representations were made to you by management and trustees.

- 1 We have fulfilled our responsibilities as trustees under the Charities Act 2011 for preparing financial statements, in accordance with the applicable financial reporting framework, FRS 102 Charity SORP and for making accurate representations to you as auditors.

We confirm that in our opinion, the financial statements give a true and fair view and in particular, where any additional information must be disclosed in order to give a true and fair view, that information has in fact been disclosed. We confirm that the selection and application of the accounting policies used in the preparation of the financial statements are appropriate, and we approve these accounts for the year ended 30 June 2024.

- 2 We confirm that all accounting records had been made available to you for the purposes of your audit and that all the transactions undertaken by the charity had been properly reflected and recorded in the accounting records. All other records and related information, including minutes of all management and trustees' meetings, had been made available to you. We have given you unrestricted access to persons within the charity in order to obtain audit evidence and have provided any additional information that you have requested for the purposes of your audit.
- 3 We acknowledge that it is a criminal offence to make a false statement in this regard, and where any trustee either makes a false statement; is aware that the statement is false; is reckless in preventing this statement; or fails to take reasonable steps to prevent the trustees' report from being approved, we acknowledge that each trustee will be guilty of a criminal offence.
- 4 We confirm that there is no ultimate controlling party.
- 5 We confirm that the charity has satisfactory title to all assets and there are no liens or encumbrances on the assets, except for those disclosed in the financial statements.
- 6 We confirm that the methods, significant assumptions and data used by us in making accounting estimates and the related disclosures, are appropriate to achieve recognition, measurement or

disclosure that is in accordance with the applicable financial reporting framework.

- 7 We confirm that we have no plans or intentions that may materially alter the carrying value and where relevant, the fair value measurement or classification of assets and liabilities reflected in the financial statements.
- 8 We confirm that the charity has no liabilities or contingent liabilities other than those disclosed in the financial statements.
- 9 We confirm that all known actual or possible litigation and claims whose effects should be considered when preparing the financial statements have been disclosed to you and account for and disclosed in accordance with FRS 102.
- 10 We confirm that there have been no events since the balance sheet date which require disclosing or which would materially affect the amounts in the financial statements, other than those already disclosed or included in the financial statements.
- 11 We confirm that the related party relationships and transactions set out below are a complete list of such relationships and transactions and that we are not aware of any further related parties or transactions.

Party	Relationship	Nature of Transactions
N E Haines	Trustee	None
Five Global Ltd	Company in which N E Haines is a Director	None
Nicholas Haines Consultancy	Sole trader business of N E Haines	None
S E Haines	Spouse/Domestic Partner of N E Haines	None
G Webb	Trustee	None
The Manchester Publicity Association - The Educational Trust	Charity of which G Webb is a Trustee	None
S A Webb	Spouse/Domestic Partner of G Webb	None
F Rothwell	Child of G Webb	Non
G & S Properties (UK)	Property rental business of G and S A Webb	None
G & S Properties (Overseas)	Property rental business of G and S A Webb	None
D Jay	Trustee	None
Smeaton Developments Ltd	Company in which D Jay is a Director	None

S Garland-Grimes	Spouse/Domestic Partner of D Jay	None
V Storah	Child of D Jay	None
O Jay	Child of D Jay	None
H Thomas	Trustee	None
C P Davies	Spouse/Domestic Partner of H Thomas	None
York Groupwork Ltd	Company in which C P Davies is a Director	None
E C Liu	Trustee	None
X Wang	Spouse/Domestic Partner of E C Liu	None
J Liu	Child of E C Liu	None
K Wicklow	Trustee	None
H Lansdown	Trustee	None
York Steiner School	A charity of which H Lansdown is a Trustee	None
T M Horta Reis da Silva	Trustee	None
E C P Rodrigues	Spouse/Domestic Partner of T M Horta Reis da Silva	None
S Rodrigues da Silva	Child of T M Hora Reis da Silva	None

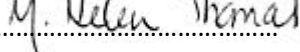
- 12 We confirm that all related party relationships and transactions have been accounted for and disclosed in accordance with the applicable financial reporting framework.
- 13 We confirm that the charity has had, at no time during the year, any arrangement, transaction or agreement to provide credit facilities (including advances and credits granted by the charity for trustees) nor to provide guarantees of any kind on behalf of the trustees.
- 14 We confirm that the charity has not contracted for any capital expenditure other than as disclosed in the financial statements.
- 15 We confirm that the charity has complied with all aspects of contractual agreements that could have a material effect on the financial statements in the event of non-compliance.
- 16 We confirm that we are not aware of any possible or actual instances of non-compliance with those laws and regulations which provide a legal framework within which the charity conducts its business and which are central to the charity's ability to conduct its business, except as explained to you and as disclosed in the financial statements.
- 17 We acknowledge our responsibility for the design and implementation of controls to prevent and detect fraud. We confirm that we have disclosed to you the results of our risk assessment of the risk of fraud in the business.

There have been no deficiencies in internal controls of which we are aware.

- 18 We confirm that there have been no actual or suspected instances of fraud involving management or employees who have a significant role in internal control of that could be a material effect on the financial statements. We also confirm that we are not aware of any allegations of fraud by former employees, regulators or others.
- 19 We confirm that, in our opinion, the charity's financial statements should be prepared on the going concern basis on the grounds that current and future sources of funding or support will be more than adequate for the charity's needs. In reaching this conclusion, we have taken into account all relevant matters of which we are aware, including availability of working capital and have considered a future period of at least the next twelve months from the date on which the financial statements will be approved.
- 20 We confirm that in our opinion the effects of unadjusted misstatements are immaterial, both individually and in aggregate, to the financial statements as a whole.
- 21 We confirm that there are no companies associated with this charity for tax purposes.
- 22 We confirm the following specific representations made to you during the course of your audit:
- a) All income has been recorded.
 - b) We confirm that stocks at 30 June 2024 were £3,600.
- 23 We acknowledge our legal responsibilities regarding disclosure of information to you as auditors and confirm that:
- so far as each trustee is aware, there is no relevant audit information to which you as auditors are unaware; and
 - each trustee has taken all the steps that they ought to have taken as a trustee to make themselves aware of any relevant audit information and to establish that you are aware of that information.

We confirm that the above representations are made on the basis of enquiries of management and staff with relevant knowledge and expertise (and, where appropriate of supporting documentation) sufficient to satisfy ourselves that we can properly make these representations to you and that to the best of our knowledge and belief they accurately reflect the representations made to you by the trustees during the course of your audit.

Yours faithfully

Trustee: Helen Thomas 

Trustee: David Jay 

Signed on behalf of the trustees of
Northern College of Acupuncture