



Sickle Cell & Thalassaemia Support Project

# Annual Report

## 2024-2025



Company No: 3575079  
Charity No: 1077687

[sctsp.org.uk](https://sctsp.org.uk)



# Chairman's Remarks

I want to take this opportunity to reflect on the achievements and challenges faced over the past financial year. We have successfully continued to provide services to meet the needs of the community, with an emphasis on outreach work, organising activities, and engaging directly with families. Despite the increasing challenges in the voluntary sector due to funding constraints, we have made continued difference to affected families and individuals. Collaboration with service providers at district and regional levels has been a key strategy to offer more structured and integrated services. I want express my gratitude and appreciation to all supporters for their valuable contributions. - Clarence Crosdale

## About Us

The Sickle Cell & Thalassaemia Support Project (SCTSP) is a community organisation supporting individuals and families living with Sickle cell and Thalassaemia blood disorders across Wolverhampton, Walsall, Dudley and surrounding areas.

We aim to:

- Provide specialist information, advice and practical support
- Deliver wellbeing and community activities that improve quality of life
- Raise awareness among health professionals and the wider public
- Empower families and young people to thrive despite the challenges of long-term conditions

Our work includes direct one-to-one counselling as part of the NHS Sickle Cell & Thalassaemia Screening Programme, group activities and wider health and wellbeing programmes.

## Our Impact

From April 2024 to March 2025, we received and processed 717 unusual blood results.

	Wolverhampton	Walsall	Dudley
Antenatal	202	158	118
Neonatal	134	105	

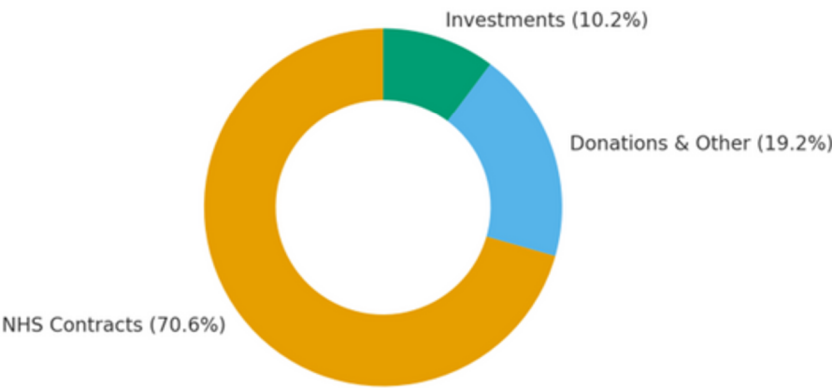
To learn more about this process, please visit <https://www.nhs.uk/pregnancy> and search for screening for sickle. We have supported service users with their health plans and we have worked with schools to provide a new or reviewed care plan for children. We have also supported many affected adults, children and their families with their wellbeing through multiple activities and events.

**Number of Sickle Cell & Thalassaemia Clients:**  
165 Adults, 173 Children

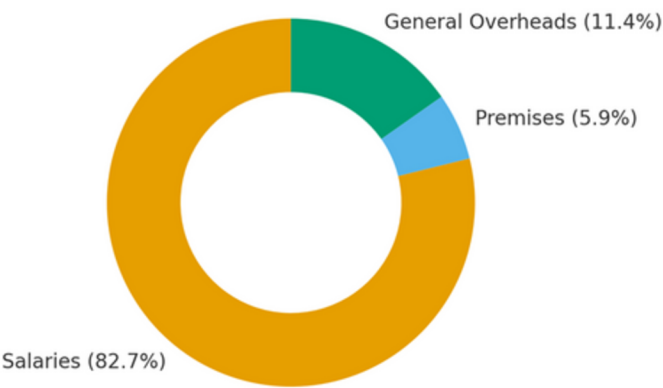
**Areas of support:**  
Wolverhampton, Walsall, Dudley and the surrounding areas.

## Finances

Income Breakdown 2024-25



Expenditure Breakdown 2024-25





# Young Person & Family Engagement

This year, we were proud to deliver a wide range of opportunities for young people to learn, connect and thrive. Our annual Sports Day featured football, archery and badminton, while our VR Workshops gave young people a chance to explore the world virtually and reflect on their experiences of NHS care.

In February 2025 many families came together at our Move, Stretch & Dance Workshop, enjoying a day of movement and fun. Families also benefitted from special events such as the Collins Aerospace Family Fun Day, where children enjoyed rides, activities and face painting.

"The kids had an absolute blast playing with other kids present and they can't stop talking about how much fun they had. Thank you all for having us." - Parent in Walsall



# Community Support & Keeping Warm

In February 2025, we delivered the Winter Warm Project in partnership with National Grid and Act On Energy, distributing warm packs, conducting home visits and sharing practical advice on energy efficiency.

At Christmas, we ran donation events in Wolverhampton and Walsall, distributing food, toiletries and children's clothing with the help of volunteers from Collins Aerospace. Families also received baby clothes, toys and home essentials throughout the winter to help them stay warm and well.

"In general these items have not only met our immediate needs, but also brought a sense of security and hope. We are grateful and we thank you all for putting smiles on our faces." - Parent in Wolverhampton



# Health & Wellbeing Support

---

In November 2024, we launched our Wellbeing Support Programme, offering families free support directly from the project.

This included:

- Support to live a healthier lifestyle through nutrition, physical activity, mental wellbeing and sleep
- Support for adults and young people to understand how to manage their emotions
- Emotional regulation and coping strategies for children and young people

Alongside this, our free massage service proved to be very popular with adults affected by Sickle cell. This was introduced following feedback at our AGM. Many patients found the sessions to be a great relief from pain and stress. Due to the popularity, we extended this programme through to March 2025.

"I found the massage session extremely beneficial, especially for my stress levels, relaxation and also took away the awful headache, shoulder and neck pain/tension that I woke up with this morning"- Adult in Wolverhampton

In December 2024, parents caring for children with Sickle Cell and Thalassaemia also benefitted from a Stress and Relaxation Workshop, where they were able to learn practical self-care tools and strategies.

## Shaping Healthcare Services

---

We were commissioned by NHS England to carry out research into patient experiences of unplanned and emergency care. Through drop-in sessions, surveys and group events, we gathered meaningful insights that will help shape better care pathways nationally.

In addition, opportunities were created for young people to have a direct influence on the future of healthcare through the planned Youth Forum at The Royal Wolverhampton NHS Trust.



## Awareness & Advocacy

---

In September 2024, we marked National Sickle Cell Awareness Month with educational talks, workplace training and a feature on #TheVoiceBox radio show.

During Black History Month in October 2024, we were proud to take part in events, including guest speaking at Holy Trinity Church and hosting our own event in Dudley, where families also received free Winter Warm Packs as part of the National Grid- Staying Warm This Winter project.

Our specialist nurses and community counsellors represented the project in hospitals and community spaces throughout the year, including raising awareness at Walsall Manor Hospital. At the same time, we continued to engage with NHS England and wider research partners.

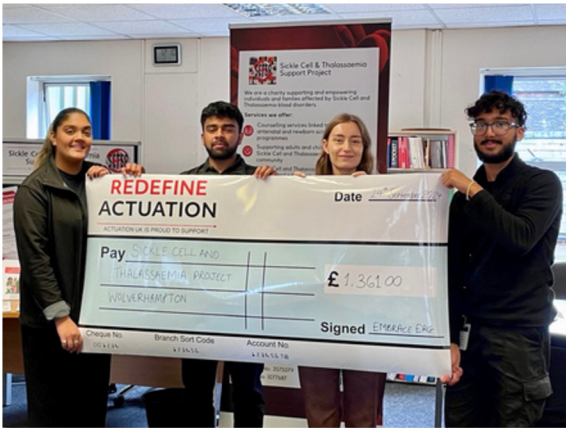


# Partnerships & Fundraising

Our work this year was strengthened by the generous contributions and involvement of our partners. Collins Aerospace supported us in numerous ways, inviting young people to their Olympics event, hosting STEM workshops, family days, and raising £1,361 through the Tough Mudder Challenge.

West Bromwich Building Society donated £600 towards our hardship fund and local fundraising during Black History Month also provided additional resources for families in need.

National Grid also supported us to keep families warm and healthy through workshops and winter warm packs. The aim of this was to provide advice and essential items to keep homes warm and reduce the cost of energy bills.



# Acknowledgements

We extend our gratitude to our staff, board members, volunteers, funders and community partners for their commitment and support. Most importantly, we thank the families we support. Your strength, resilience and feedback continue to inspire our work and shape everything we do.

## Our Supporters



COMPANY REGISTERED NUMBER: 03575079 (England and Wales)

CHARITY REGISTERED NUMBER: 1077687

SICKLE CELL AND THALASSAEMIA SUPPORT  
PROJECT (WOLVERHAMPTON)

REPORT OF THE DIRECTORS AND

FINANCIAL STATEMENTS

FOR THE YEAR ENDED 31ST MARCH 2025



**SICKLE CELL AND THALASSAEMIA SUPPORT PROJECT (WOLVERHAMPTON)**

**CONTENTS OF THE FINANCIAL STATEMENTS  
FOR THE YEAR ENDED 31ST MARCH 2025**

	<b>Page</b>
<b>Company Information</b>	<b>1</b>
<b>Report of the Directors and Trustees</b>	<b>2</b>
<b>Statement of Trustees' responsibilities</b>	<b>4</b>
<b>Independent examiner's report</b>	<b>5</b>
<b>Statement of financial activities</b>	<b>6</b>
<b>Balance sheet</b>	<b>8</b>
<b>Notes to the financial statements</b>	<b>9</b>

**SICKLE CELL AND THALASSAEMIA SUPPORT PROJECT (WOLVERHAMPTON)**

**COMPANY INFORMATION  
FOR THE YEAR ENDED 31ST MARCH 2025**

<b>DIRECTORS/TRUSTEES:</b>	C R Crosdale D McIntosh D A McIntosh Dr D Kalra L Bell L T Mooruth D C Smith A A Ezomon
<b>SECRETARY:</b>	S Herian
<b>REGISTERED OFFICE:</b>	Paycare House 1st Floor George Street Wolverhampton WV2 4DX
<b>REGISTERED NUMBER:</b>	03575079 (England and Wales)
<b>REGISTERED CHARITY NUMBER:</b>	1077687
<b>INDEPENDENT EXAMINER:</b>	Neil Harris FCA BSc (Hons) Cygnet Accounting Limited 37 Rossell Drive Stapleford Nottingham, NG9 7EG
<b>BANKERS:</b>	Lloyds Bank Plc 37 Queen Square Wolverhampton WV1 1TL
<b>SOLICITORS:</b>	Wall James Chappell 15-23 Hagley Road Stourbridge DY8 1QW



## **SICKLE CELL AND THALASSAEMIA SUPPORT PROJECT (WOLVERHAMPTON)**

### **REPORT OF THE DIRECTORS AND TRUSTEES FOR THE YEAR ENDED 31ST MARCH 2025**

The directors, who are also trustees of the charity, present their report with the financial statements of the company for the year ended 31st March 2025. The directors have adopted the provisions of the Statement of Recommended Practice (SORP) "Accounting and Reporting by Charities" (FRS 102) in preparing the annual report and financial statements.

#### **PRINCIPAL ACTIVITIES**

The principal charitable activities of the company in the year under review were those to provide relief of poverty, sickness and distress, and enhancement of life, to those affected by the disorders Sickle Cell Disease and Thalassaemia, living within the West Midlands and surrounding areas. Those so affected are predominantly from African, Caribbean, Mediterranean and Asian communities. In 2016 the charity had expanded its activities to include working with families with complex and multiple needs, in order to promote, strengthen and improve their life chances.

#### **DIRECTORS AND TRUSTEES**

The directors and trustees during the year under review were:

C R Crosdale  
D McIntosh  
D A McIntosh  
Dr D Kalra  
L Bell  
L T Mooruth  
D C Smith  
A A Ezomon

#### **COMPANY STATUS**

The company is limited by guarantee and is a registered charity (Registered No 1077687). This report has been prepared in accordance with the special provisions of Part 15 of the Companies Act 2006 relating to small companies.

#### **OBJECTS AND REVIEW OF THE COMPANY**

The report sets out activities and achievements of the charity for 2024/2025. The organisation was formed in September 1990 and founded as a charity in 1996. The objects of the charity allow the trustees to develop comprehensively and consistently high quality services for users, their carers, families and professionals who interact with them, within the Wolverhampton and surrounding areas notably Black Country and Staffordshire.

The Trustees support a number of activities in pursuant of its objects. These are as follows:

- To offer counselling and screening to those individuals affected by Sickle Cell or Thalassaemia.
- To provide advice, support and guidance to affected individuals.
- To increase awareness by developing educational materials and promotion of raising awareness activities.
- To support both universal and voluntary screening programmes.
- To develop robust community development activities to promote and support the affected communities.
- To strengthen and support families with complex and challenging needs.

The Trustees meet every three months to review overall performance of the charity and to give strategic guidance. The directors/trustees review, and consider, the charitable company's reserves in the context of risks and funding. In setting a reserves policy the directors aim to establish reasonable but not absolute protection against risks and to balance this with the need to deploy resources in pursuit of the company's charitable objectives. Reserves are intended to:

- 1) Provide protection for most fluctuations in income and expenditure
- 2) Fund future investment needs and non-recurrent premises costs

#### **Operational Costs**

With the changes that have taken place during the year it has necessitated a review of the Reserve Policy in relation to operational activities. It is now proposed that the reserves target should at least cover eight months

## SICKLE CELL AND THALASSAEMIA SUPPORT PROJECT (WOLVERHAMPTON)

### REPORT OF THE DIRECTORS AND TRUSTEES FOR THE YEAR ENDED 31ST MARCH 2025

of operation including redundancy cost. The new proposed figure is £225,000. The Reserves at the end of the financial year 2025 were £711,151 (2024: £733,112).

#### Rent Costs

SCTSP are currently residing in a building paying reduced service charge. This may not be a long-lasting agreement and we cannot be certain in anyway shape or form that the management structure of the owners of the building will not change and thereby begin to charge rent that will cause major disruption to the operational activities of SCTSP. With this in mind it is our proposal that we begin to build a reserve in the accounts to cater for this anomaly. We are currently paying service charge of about £9,750 per annum and we would expect that we probably should be paying rent somewhere in the region of £28,000 per annum. It is therefore proposed that in this year's accounts we set aside £48,000 in designated reserves.

The majority of the charitable company's funding is from NHS contracts which normally are renewable on a 1-2 year period. Additional funding is obtained from donations by supporters of the charity, however given the difficult economic climate, like many charities we have seen a reduction in this income, however we are still appreciative of those who continue to collect donations on behalf of the charity. We also recognise that those who make such donations are keen to see our service users directly benefit from their efforts and to this end the Trustees have decided that the majority of these funds will go towards the Hardship Fund established by the charity. Currently a provision of £5,000 has been set aside and will be drawn down within each year's expenditure depending on numbers of individuals identified to receive such support.

The charity has invested surplus funds with the objective to generate funds through capital growth. The funds are managed by Milsted Langdon and are monitored by the Finance Sub Committee with regular reports to the Board. A cautious approach has been taken to risk over the period to reflect the volatility in the market that can occur. With the increase in income the organisation will review its investment portfolio with this in mind.

The Trustees regularly review the finances of the charity and are pleased that a satisfactory independent accountant's examination has been achieved.

#### PUBLIC BENEFIT

All the charity's activities are aimed at supporting local individuals affected by sickle cell and thalassaemia and families experiencing challenges. In developing activities and delivering services, the directors have taken account of the guidance published by the Charity Commission on public benefit.

#### DEFINED BENEFIT PENSION SCHEME

A full actuarial valuation was carried out as at 31 March 2022, the results of which are shown in note 9 of the financial statements. With respect to this liability Wolverhampton City Council has agreed to act as a guarantor towards this liability. However, the recent actuarial valuation, which shows a current liability of £512,000; as with previous years, the Trustees will continue to be mindful of this liability within its overall reserve policy.

#### RISK MANAGEMENT

The trustees have considered the major risks the charity faces. The charity's system of internal controls is designed to provide reasonable but not absolute assurance against misstatement or loss. The trustees are satisfied that the systems in place mitigate the charity's exposure to the major risks.

#### ON BEHALF OF THE BOARD:

  
.....  
L Bell - Director/Trustee

Date: 23/9/2025

  
.....  
C R Crosdale - Director/Trustee

The notes form part of these financial statements



**SICKLE CELL AND THALASSAEMIA SUPPORT PROJECT (WOLVERHAMPTON)**

**STATEMENT OF TRUSTEES' RESPONSIBILITIES  
FOR THE YEAR ENDED 31ST MARCH 2025**

The trustees, who are also the directors of Sickle Cell and Thalassaemia Support Project (Wolverhampton) for the purpose of company law, are responsible for preparing the Trustees' Report and the financial statements in accordance with applicable law and United Kingdom Accounting Standards (United Kingdom Generally Accepted Accounting Practice).

Company Law requires the trustees to prepare financial statements for each financial year which give a true and fair view of the state of affairs of the charity and of the incoming resources and application of resources, including the income and expenditure, of the charitable company for that year.

In preparing these financial statements, the trustees are required to:

- select suitable accounting policies and then apply them consistently;
- observe the methods and principles in the Charities SORP;
- make judgements and estimates that are reasonable and prudent;
- state whether applicable UK Accounting Standards have been followed, subject to any material departures disclosed and explained in the financial statements; and
- prepare the financial statements on the going concern basis unless it is inappropriate to presume that the charity will continue in operation.

The trustees are responsible for keeping adequate accounting records that disclose with reasonable accuracy at any time the financial position of the charity and enable them to ensure that the financial statements comply with the Companies Act 2006. They are also responsible for safeguarding the assets of the charity and hence for taking reasonable steps for the prevention and detection of fraud and other irregularities.

**SICKLE CELL AND THALASSAEMIA SUPPORT PROJECT (WOLVERHAMPTON)**

**INDEPENDENT EXAMINER'S REPORT  
FOR THE YEAR ENDED 31ST MARCH 2025**

I report to the trustees on my examination of the financial statements of Sickle Cell And Thalassaemia Support Project (Wolverhampton) (the charity) for the year ended 31 March 2025.

**Responsibilities and basis of report**

As the trustees of the charity (and also its directors for the purposes of company law) you are responsible for the preparation of the financial statements in accordance with the requirements of the Companies Act 2006 (the 2006 Act).

Having satisfied myself that the financial statements of the charity are not required to be audited under Part 16 of the 2006 Act and are eligible for independent examination, I report in respect of my examination of the charity's financial statements carried out under the Charities Act (the Act). In carrying out my examination I have followed all the applicable Directions given by the Charity Commission under the Act.

**Independent examiner's statement**

I have completed my examination. I confirm that no matters have come to my attention in connection with the examination giving me cause to believe that in any material respect:

1. accounting records were not kept in respect of the charity as required by section 386 of the 2006 Act; or
2. the financial statements do not accord with those records; or
3. the financial statements do not comply with the accounting requirements of section 396 of the 2006 Act other than any requirement that the accounts give a true and fair view which is not a matter considered as part of an independent examination; or
4. the financial statements have not been prepared in accordance with the methods and principles of the Statement of Recommended Practice for accounting and reporting by charities applicable to charities preparing their accounts in accordance with Section 1A "Small Entities" of Financial Reporting Standard 102 "The Financial Reporting Standard applicable in the UK and Republic of Ireland".

I have no concerns and have come across no other matters in connection with the examination to which attention should be drawn in this report in order to enable a proper understanding of the financial statements to be reached.



.....  
Neil Harris FCA BSc (Hons)

Cygnat Accounting Limited  
37 Rossell Drive  
Stapleford  
Nottingham  
NG9 7EG

Dated: 21.10.2025



**SICKLE CELL AND THALASSAEMIA SUPPORT PROJECT (WOLVERHAMPTON)**

**STATEMENT OF FINANCIAL ACTIVITIES (INCLUDING INCOME AND EXPENDITURE ACCOUNT)  
FOR THE YEAR ENDED 31ST MARCH 2025**

	Notes	Unrestricted Funds £	Restricted Funds £	Total Funds 2025 £	Total Funds 2024 £
<b>INCOME FROM:</b>					
Donations and other income		50,164	-	50,164	90,001
Investment income		26,735	-	26,735	18,593
Charitable activities:					
Service level agreements from:					
Black Country ICB Wolverhampton Place		-	116,414	116,414	115,720
Black Country ICB Dudley Place		-	17,065	17,065	16,962
Walsall Healthcare NHS Trust		-	51,142	51,142	50,773
<b>TOTAL INCOME</b>		<u>76,899</u>	<u>184,621</u>	<u>261,520</u>	<u>292,049</u>
<b>EXPENDITURE ON:</b>					
Raising funds	1	300	13,086	13,386	10,981
Charitable activities	2	<u>7,243</u>	<u>264,724</u>	<u>271,967</u>	<u>230,534</u>
<b>TOTAL EXPENDITURE</b>		<u>7,543</u>	<u>277,810</u>	<u>285,353</u>	<u>241,515</u>
Net incoming / (expenditure) before gain or loss on investments		69,356	(93,189)	(23,833)	50,534
Unrealised gain/(loss) on investments		1,872	-	1,872	4,317
Balances brought forward as at 1 April 2024		<u>535,143</u>	<u>197,969</u>	<u>733,112</u>	<u>678,261</u>
Balances carried forward as at 31 March 2025		<u>606,371</u>	<u>104,780</u>	<u>711,151</u>	<u>733,112</u>

The statement of financial activities includes all gains and losses recognised in the year.

All income and expenditure derive from continuing activities.

The statement of financial activities also complies with the requirements for an income and expenditure account under the Companies Act 2006.

The notes form part of these financial statements

**SICKLE CELL AND THALASSAEMIA SUPPORT PROJECT (WOLVERHAMPTON)**

**NOTES TO THE STATEMENT OF FINANCIAL ACTIVITIES  
FOR THE YEAR ENDED 31ST MARCH 2025**

	Unrestricted Funds £	Restricted Funds £	Total Funds 2025 £	Total Funds 2024 £
<b>1 RAISING FUNDS</b>				
Wages	193	9,451	9,644	7,844
Social Security	15	729	744	483
Pensions	28	1,386	1,414	1,186
Repairs & maintenance	10	182	192	144
Telephone	7	329	336	343
Sundry expenses	7	143	150	117
Postage, printing & stationery	8	153	161	116
Rent & service charge	24	447	471	471
Insurance	3	171	174	173
Depreciation - office equipment	-	4	4	4
Bank charges	5	91	96	100
	<u>300</u>	<u>13,086</u>	<u>13,386</u>	<u>10,981</u>
<b>2 CHARITABLE ACTIVITIES</b>				
Wages	1,832	181,406	183,238	149,046
Social Security	283	13,854	14,137	9,180
Pensions	537	26,331	26,868	22,538
Staff training	-	300	300	1,435
Travelling	75	1,434	1,509	1,883
Repairs & maintenance	182	3,463	3,645	2,742
Social hardship donation	811	-	811	1,240
Social support	-	-	-	12,736
Consultancy service development	-	1,245	1,245	1,500
Subscriptions	2,180	-	2,180	2,085
Telephone	128	6,266	6,394	6,509
Sundry expenses	143	2,713	2,856	2,220
Postage, printing & stationery	153	2,899	3,052	2,199
Rent & service charge	179	8,770	8,949	8,949
Insurance	66	3,238	3,304	3,291
Depreciation - office equipment	4	68	72	85
Support costs:				
Board expenses	20	382	402	123
Accountancy	77	1,473	1,550	1,550
Professional fees	573	10,882	11,455	1,223
	<u>7,243</u>	<u>264,724</u>	<u>271,967</u>	<u>230,534</u>

The notes form part of these financial statements

**SICKLE CELL AND THALASSAEMIA SUPPORT PROJECT (WOLVERHAMPTON)**

**BALANCE SHEET  
31ST MARCH 2025**

		2025	2024
	Notes	£	£
<b>Fixed assets</b>			
Tangible assets	4	428	504
<b>Current assets</b>			
Debtors	5	12,910	7,190
Investments	6	54,796	52,924
Cash at bank and in hand		<u>729,567</u>	<u>760,334</u>
		797,273	820,448
<b>Creditors: Amounts falling due within one year</b>	7	<u>(1,550)</u>	<u>(2,840)</u>
<b>Net current assets</b>		<u>795,723</u>	<u>817,608</u>
<b>Total assets less current liabilities</b>		796,151	818,112
<b>Creditors: Amounts falling due within one year</b>	8	<u>85,000</u>	<u>85,000</u>
<b>Net assets</b>		<u>711,151</u>	<u>733,112</u>
<b>Income funds</b>			
Unrestricted funds:			
General funds		526,371	455,143
Designated funds		<u>80,000</u>	<u>80,000</u>
		606,371	535,143
Restricted funds		<u>104,780</u>	<u>197,969</u>
<b>Total income funds</b>		<u>711,151</u>	<u>733,112</u>

The company is entitled to exemption from audit under Section 477 of the Companies Act 2006 for the year ended 31st March 2025.


The directors acknowledge their responsibilities for complying with the requirements of the Companies Act 2006 with respect to accounting records and the preparation of financial statements.

The members have not required the company to obtain an audit of its financial statements for the year ended 31st March 2025 in accordance with Section 476 of the Companies Act 2006.

These financial statements have been prepared in accordance with the provisions applicable to companies subject to the small companies regime.

The financial statements were approved by the Board of Trustees on ..... and were signed on its behalf by:

  
L Bell  
Director/Trustee

  
C R Crosdale  
Director/Trustee

Company registration number 03575079



## **SICKLE CELL AND THALASSAEMIA SUPPORT PROJECT (WOLVERHAMPTON)**

### **NOTES TO THE FINANCIAL STATEMENTS FOR THE YEAR ENDED 31ST MARCH 2025**

#### **1. Accounting policies**

##### **Charity information**

Sickle Cell and Thalassaemia Support Project (Wolverhampton) is a private company limited by guarantee incorporated in England and Wales. The registered office is Paycare House, 1st Floor, George Street, Wolverhampton, WV2 4DX. The members of the company are the trustees names on page 1. In the event of the charity being wound up, the liability in respect of the guarantee is limited to £1 per member of the charity.

##### **Accounting convention**

The financial statements have been prepared under the historical cost convention and in accordance with the provisions of Section 1A "Small Entities" of Financial Reporting Standard 102 "The Financial Reporting Standard applicable in the UK and Republic of Ireland", the Charities Act, the Companies Act 2006 and the Statement of Recommended Practice: "Accounting and Reporting by Charities" (FRS 102) with the exception of accounting for the deficit on the defined benefit pension scheme, for which provision has been made as set out below and in note 9.

The financial statements are prepared in sterling, which is the functional currency of the charity. Monetary amounts in these financial statements are rounded to the nearest £.

##### **Charitable funds**

Unrestricted funds are available for use at the discretion of the trustees in furtherance of their charitable objectives.

Designated funds comprise unrestricted funds that have been set aside by the trustees for particular purposes. The aim and use of each designated fund is set out in the notes to the financial statements.

Restricted funds are subject to specific conditions by donors as to how they may be used. The purposes and uses of the restricted funds are set out in the notes to the financial statements.

##### **Income**

Income is recognised when the charity is legally entitled to it after any performance conditions have been met, the amounts can be measured reliably, and it is probable that income will be received.

Cash donations are recognised on receipt. Other donations are recognised once the charity has been notified of the donation, unless performance conditions require deferral of the amount. Income tax recoverable in relation to donations received under Gift Aid or deeds of covenant is recognised at the time of the donation.

Gifts in kind donated for distribution are included at valuation and recognised as income when they are distributed to the projects. Gifts donated for resale are included as income when they are sold. Donated facilities are included at the value to the charity where this can be quantified and a third party is bearing the cost. No amounts are included in the financial statements for services donated by volunteers.

##### **Expenditure**

Expenditure is recognised once there is a legal or constructive obligation to transfer economic benefit to a third party, it is probable that a transfer of economic benefits will be required in settlement, and the amount of the obligation can be measured reliably.

Expenditure is classified by activity. The costs of each activity are made up of the total of direct costs and shared costs, including support costs involved in undertaking each activity. Direct costs attributable to a single activity are allocated directly to that activity. Shared costs which contribute to more than one activity and support costs which are not attributable to a single activity are apportioned between those activities on a basis consistent with the use of resources. Central staff costs are allocated on the basis of time spent, and depreciation charges are allocated on the portion of the asset's use.

## SICKLE CELL AND THALASSAEMIA SUPPORT PROJECT (WOLVERHAMPTON)

### NOTES TO THE FINANCIAL STATEMENTS FOR THE YEAR ENDED 31ST MARCH 2025

#### 1. Accounting policies (continued)

All expenditure is accounted for on an accruals basis and has been classified under headings that aggregate all costs related to the category. Where costs cannot be directly attributed to particular headings they have been allocated to activities on a basis consistent with use of the resources.

Fund-raising costs are those incurred in seeking voluntary contributions and do not include the costs of disseminating information in support of the charitable activities. Support costs are costs incurred directly in support of expenditure on the objects of the charity and include project management carried out at headquarters. Management and administration costs are those incurred in connection with the administration of the charity and compliance with constitutional and statutory requirements.

#### **Tangible fixed assets**

Tangible fixed assets are initially measured at cost and subsequently measured at cost or valuation, net of depreciation and any impairment losses.

Depreciation is recognised so as to write off the cost or valuation of assets less their residual values over their useful lives on the following bases:

Plant and machinery	- 25% on cost
Fixtures and fittings	- 15% & 25% on reducing balance

The gain or loss arising on the disposal of an asset is determined as the difference between the sale proceeds and the carrying value of the asset, and is recognised in the statement of financial activities.

#### **Investments**

Investments are stated at market value at the balance sheet date. The SOFA includes the net gains or losses arising on revaluation throughout the year.

#### **Pensions**

The company operates a defined benefit pension scheme which provides benefits based on final pensionable pay. The scheme is administered by the West Midlands Pension Fund, and the assets are held independently of the finances of the company. The most recent full actuarial valuation was carried out at 31 March 2022. The projected valuation deficit in the scheme at 31 March 2022 was £512,000 the Board has considered this situation and feels that because of the age of the work force this deficit can be eliminated over a period of time and currently a total provision of £85,000 has been made to date in these accounts.

#### **Restricted Funds**

Monies received as grants for particular purposes are held as separate funds and are credited to the Statement of Financial Activities when costs of the particular relevant projects are incurred.

#### **Leases**

Rentals payable under operating leases, including any lease incentives received, are charged to income on a straight line basis over the term of the relevant lease.

**SICKLE CELL AND THALASSAEMIA SUPPORT PROJECT (WOLVERHAMPTON)**

**NOTES TO THE FINANCIAL STATEMENTS  
FOR THE YEAR ENDED 31ST MARCH 2025**

**2. STAFF COSTS**

	2025	2024
	£	£
Wages and salaries	192,882	156,890
Social security costs	14,881	9,663
Other pension costs	<u>28,282</u>	<u>23,724</u>
	<u>236,045</u>	<u>190,277</u>

The average monthly number of employees during the year was as follows:

	2025	2024
Charitable Workers	<u>5</u>	<u>5</u>

One employee (2024: nil) received total emoluments of more than £60,000 but less than £70,000. No employees (2024: nil) received total emoluments above £70,000.

**3. OPERATING PROFIT/(LOSS)**

	2025	2024
	£	£
Depreciation - owned assets	<u>76</u>	<u>89</u>
Directors' emoluments and other benefits etc	<u>-</u>	<u>-</u>

**4. TANGIBLE FIXED ASSETS**

	Plant and machinery	Fixtures and fittings	Total
	£	£	£
<b>Cost</b>			
At 1st April 2024	23,824	13,391	37,215
Additions	-	-	-
Disposals	<u>-</u>	<u>-</u>	<u>-</u>
At 31st March 2025	<u>23,824</u>	<u>13,391</u>	<u>37,215</u>
<b>Depreciation</b>			
At 1st April 2024	23,824	12,887	36,711
Charge for year	-	76	76
Eliminated on disposals	<u>-</u>	<u>-</u>	<u>-</u>
At 31st March 2025	<u>23,824</u>	<u>12,963</u>	<u>36,787</u>
<b>Net book value</b>			
At 31st March 2025	<u>-</u>	<u>428</u>	<u>428</u>
At 31st March 2024	<u>-</u>	<u>504</u>	<u>504</u>



**SICKLE CELL AND THALASSAEMIA SUPPORT PROJECT (WOLVERHAMPTON)**

**NOTES TO THE FINANCIAL STATEMENTS  
FOR THE YEAR ENDED 31ST MARCH 2025**

<b>5. DEBTORS: AMOUNTS FALLING DUE WITHIN ONE YEAR</b>	<b>2025 £</b>	<b>2024 £</b>
Prepayments and accrued income	<u>12,910</u>	<u>7,190</u>
<b>6. CURRENT ASSET INVESTMENTS</b>	<b>2025 £</b>	<b>2024 £</b>
Architas MA Passive Moderate S Acc	<u>54,796</u>	<u>52,924</u>
<b>7. CREDITORS: AMOUNTS FALLING DUE WITHIN ONE YEAR</b>	<b>2025 £</b>	<b>2024 £</b>
Social security and other tax	-	-
Accruals and deferred income	<u>1,550</u>	<u>2,840</u>
	<u>1,550</u>	<u>2,840</u>
<b>8. CREDITORS: AMOUNTS FALLING DUE AFTER MORE THAN ONE YEAR</b>	<b>2025 £</b>	<b>2024 £</b>
Provision for defined pension scheme deficit (see note 9)	<u>85,000</u>	<u>85,000</u>
<b>9. PENSION SCHEME</b>	<b>2025 £</b>	<b>2024 £</b>
Value of scheme assets and liabilities		
Market value of assets	820,000	820,000
Present value of scheme liabilities	<u>(1,332,000)</u>	<u>(1,332,000)</u>
Pension scheme deficit	<u>(512,000)</u>	<u>(512,000)</u>

The above is based on a valuation at 31 March 2022. Provision of £85,000 has been made towards the above deficit.

**SICKLE CELL AND THALASSAEMIA SUPPORT PROJECT (WOLVERHAMPTON)**

**NOTES TO THE FINANCIAL STATEMENTS  
FOR THE YEAR ENDED 31ST MARCH 2025**

**10. OPERATING LEASE COMMITMENTS**

At the reporting end date the charity had outstanding commitments for future minimum lease payments under non-cancellable operating leases, which fall due as follows:

	2025 £	2024 £
Within one year	-	-
Between two and five years	<u>-</u>	<u>-</u>
	<u>-</u>	<u>-</u>

**11. ANALYSIS OF NET ASSETS BETWEEN FUNDS**

	Fixed Assets £	Other Net Assets £	Total Net Assets £
Unrestricted Funds:			
General Funds	-	526,371	526,371
Designated Funds	<u>-</u>	<u>80,000</u>	<u>80,000</u>
	-	606,371	606,371
Restricted Funds	<u>428</u>	<u>104,352</u>	<u>104,780</u>
	<u>428</u>	<u>710,723</u>	<u>711,151</u>

**12. RESTRICTED FUNDS**

<b>Fund</b>	<b>Purpose of Fund</b>	<b>Reason for Restriction</b>
Black Country ICB Wolverhampton Place	Support the antenatal and newborn screening programme and provide counselling and support to those affected	Wolverhampton residents only
Black Country ICB Dudley Place	Support affected children with long term conditions to manage their condition through various social and community interventions	Dudley residents only
Walsall Healthcare NHS Trust	Support the antenatal and newborn screening programme and provide counselling and support to those affected	Walsall residents only

COMPANY REGISTERED NUMBER: 03575079 (England and Wales)

CHARITY REGISTERED NUMBER: 1077687

SICKLE CELL AND THALASSAEMIA SUPPORT  
PROJECT (WOLVERHAMPTON)

REPORT OF THE DIRECTORS AND

FINANCIAL STATEMENTS

FOR THE YEAR ENDED 31ST MARCH 2025



**SICKLE CELL AND THALASSAEMIA SUPPORT PROJECT (WOLVERHAMPTON)**

**CONTENTS OF THE FINANCIAL STATEMENTS  
FOR THE YEAR ENDED 31ST MARCH 2025**

	<b>Page</b>
<b>Company Information</b>	<b>1</b>
<b>Report of the Directors and Trustees</b>	<b>2</b>
<b>Statement of Trustees' responsibilities</b>	<b>4</b>
<b>Independent examiner's report</b>	<b>5</b>
<b>Statement of financial activities</b>	<b>6</b>
<b>Balance sheet</b>	<b>8</b>
<b>Notes to the financial statements</b>	<b>9</b>

**SICKLE CELL AND THALASSAEMIA SUPPORT PROJECT (WOLVERHAMPTON)**

**COMPANY INFORMATION  
FOR THE YEAR ENDED 31ST MARCH 2025**

<b>DIRECTORS/TRUSTEES:</b>	C R Crosdale D McIntosh D A McIntosh Dr D Kalra L Bell L T Mooruth D C Smith A A Ezomon
<b>SECRETARY:</b>	S Herian
<b>REGISTERED OFFICE:</b>	Paycare House 1st Floor George Street Wolverhampton WV2 4DX
<b>REGISTERED NUMBER:</b>	03575079 (England and Wales)
<b>REGISTERED CHARITY NUMBER:</b>	1077687
<b>INDEPENDENT EXAMINER:</b>	Neil Harris FCA BSc (Hons) Cygnet Accounting Limited 37 Rossell Drive Stapleford Nottingham, NG9 7EG
<b>BANKERS:</b>	Lloyds Bank Plc 37 Queen Square Wolverhampton WV1 1TL
<b>SOLICITORS:</b>	Wall James Chappell 15-23 Hagley Road Stourbridge DY8 1QW

## **SICKLE CELL AND THALASSAEMIA SUPPORT PROJECT (WOLVERHAMPTON)**

### **REPORT OF THE DIRECTORS AND TRUSTEES FOR THE YEAR ENDED 31ST MARCH 2025**

The directors, who are also trustees of the charity, present their report with the financial statements of the company for the year ended 31st March 2025. The directors have adopted the provisions of the Statement of Recommended Practice (SORP) "Accounting and Reporting by Charities" (FRS 102) in preparing the annual report and financial statements.

#### **PRINCIPAL ACTIVITIES**

The principal charitable activities of the company in the year under review were those to provide relief of poverty, sickness and distress, and enhancement of life, to those affected by the disorders Sickle Cell Disease and Thalassaemia, living within the West Midlands and surrounding areas. Those so affected are predominantly from African, Caribbean, Mediterranean and Asian communities. In 2016 the charity had expanded its activities to include working with families with complex and multiple needs, in order to promote, strengthen and improve their life chances.

#### **DIRECTORS AND TRUSTEES**

The directors and trustees during the year under review were:

C R Crosdale  
D McIntosh  
D A McIntosh  
Dr D Kalra  
L Bell  
L T Mooruth  
D C Smith  
A A Ezomon

#### **COMPANY STATUS**

The company is limited by guarantee and is a registered charity (Registered No 1077687). This report has been prepared in accordance with the special provisions of Part 15 of the Companies Act 2006 relating to small companies.

#### **OBJECTS AND REVIEW OF THE COMPANY**

The report sets out activities and achievements of the charity for 2024/2025. The organisation was formed in September 1990 and founded as a charity in 1996. The objects of the charity allow the trustees to develop comprehensively and consistently high quality services for users, their carers, families and professionals who interact with them, within the Wolverhampton and surrounding areas notably Black Country and Staffordshire.

The Trustees support a number of activities in pursuant of its objects. These are as follows:

- To offer counselling and screening to those individuals affected by Sickle Cell or Thalassaemia.
- To provide advice, support and guidance to affected individuals.
- To increase awareness by developing educational materials and promotion of raising awareness activities.
- To support both universal and voluntary screening programmes.
- To develop robust community development activities to promote and support the affected communities.
- To strengthen and support families with complex and challenging needs.

The Trustees meet every three months to review overall performance of the charity and to give strategic guidance. The directors/trustees review, and consider, the charitable company's reserves in the context of risks and funding. In setting a reserves policy the directors aim to establish reasonable but not absolute protection against risks and to balance this with the need to deploy resources in pursuit of the company's charitable objectives. Reserves are intended to:

- 1) Provide protection for most fluctuations in income and expenditure
- 2) Fund future investment needs and non-recurrent premises costs

#### **Operational Costs**

With the changes that have taken place during the year it has necessitated a review of the Reserve Policy in relation to operational activities. It is now proposed that the reserves target should at least cover eight months



## SICKLE CELL AND THALASSAEMIA SUPPORT PROJECT (WOLVERHAMPTON)

### REPORT OF THE DIRECTORS AND TRUSTEES FOR THE YEAR ENDED 31ST MARCH 2025

of operation including redundancy cost. The new proposed figure is £225,000. The Reserves at the end of the financial year 2025 were £711,151 (2024: £733,112).

#### Rent Costs

SCTSP are currently residing in a building paying reduced service charge. This may not be a long-lasting agreement and we cannot be certain in any way shape or form that the management structure of the owners of the building will not change and thereby begin to charge rent that will cause major disruption to the operational activities of SCTSP. With this in mind it is our proposal that we begin to build a reserve in the accounts to cater for this anomaly. We are currently paying service charge of about £9,750 per annum and we would expect that we probably should be paying rent somewhere in the region of £28,000 per annum. It is therefore proposed that in this year's accounts we set aside £48,000 in designated reserves.

The majority of the charitable company's funding is from NHS contracts which normally are renewable on a 1-2 year period. Additional funding is obtained from donations by supporters of the charity, however given the difficult economic climate, like many charities we have seen a reduction in this income, however we are still appreciative of those who continue to collect donations on behalf of the charity. We also recognise that those who make such donations are keen to see our service users directly benefit from their efforts and to this end the Trustees have decided that the majority of these funds will go towards the Hardship Fund established by the charity. Currently a provision of £5,000 has been set aside and will be drawn down within each year's expenditure depending on numbers of individuals identified to receive such support.

The charity has invested surplus funds with the objective to generate funds through capital growth. The funds are managed by Milsted Langdon and are monitored by the Finance Sub Committee with regular reports to the Board. A cautious approach has been taken to risk over the period to reflect the volatility in the market that can occur. With the increase in income the organisation will review its investment portfolio with this in mind.

The Trustees regularly review the finances of the charity and are pleased that a satisfactory independent accountant's examination has been achieved.

#### PUBLIC BENEFIT

All the charity's activities are aimed at supporting local individuals affected by sickle cell and thalassaemia and families experiencing challenges. In developing activities and delivering services, the directors have taken account of the guidance published by the Charity Commission on public benefit.

#### DEFINED BENEFIT PENSION SCHEME

A full actuarial valuation was carried out as at 31 March 2022, the results of which are shown in note 9 of the financial statements. With respect to this liability Wolverhampton City Council has agreed to act as a guarantor towards this liability. However, the recent actuarial valuation, which shows a current liability of £512,000; as with previous years, the Trustees will continue to be mindful of this liability within its overall reserve policy.

#### RISK MANAGEMENT

The trustees have considered the major risks the charity faces. The charity's system of internal controls is designed to provide reasonable but not absolute assurance against misstatement or loss. The trustees are satisfied that the systems in place mitigate the charity's exposure to the major risks.

#### ON BEHALF OF THE BOARD:

  
.....  
L Bell - Director/Trustee

Date: 23/9/2025

  
.....  
C R Crosdale - Director/Trustee

The notes form part of these financial statements

**SICKLE CELL AND THALASSAEMIA SUPPORT PROJECT (WOLVERHAMPTON)**

**STATEMENT OF TRUSTEES' RESPONSIBILITIES  
FOR THE YEAR ENDED 31ST MARCH 2025**

The trustees, who are also the directors of Sickle Cell and Thalassaemia Support Project (Wolverhampton) for the purpose of company law, are responsible for preparing the Trustees' Report and the financial statements in accordance with applicable law and United Kingdom Accounting Standards (United Kingdom Generally Accepted Accounting Practice).

Company Law requires the trustees to prepare financial statements for each financial year which give a true and fair view of the state of affairs of the charity and of the incoming resources and application of resources, including the income and expenditure, of the charitable company for that year.

In preparing these financial statements, the trustees are required to:

- select suitable accounting policies and then apply them consistently;
- observe the methods and principles in the Charities SORP;
- make judgements and estimates that are reasonable and prudent;
- state whether applicable UK Accounting Standards have been followed, subject to any material departures disclosed and explained in the financial statements; and
- prepare the financial statements on the going concern basis unless it is inappropriate to presume that the charity will continue in operation.

The trustees are responsible for keeping adequate accounting records that disclose with reasonable accuracy at any time the financial position of the charity and enable them to ensure that the financial statements comply with the Companies Act 2006. They are also responsible for safeguarding the assets of the charity and hence for taking reasonable steps for the prevention and detection of fraud and other irregularities.

**SICKLE CELL AND THALASSAEMIA SUPPORT PROJECT (WOLVERHAMPTON)**

**INDEPENDENT EXAMINER'S REPORT  
FOR THE YEAR ENDED 31ST MARCH 2025**

I report to the trustees on my examination of the financial statements of Sickle Cell And Thalassaemia Support Project (Wolverhampton) (the charity) for the year ended 31 March 2025.

**Responsibilities and basis of report**

As the trustees of the charity (and also its directors for the purposes of company law) you are responsible for the preparation of the financial statements in accordance with the requirements of the Companies Act 2006 (the 2006 Act).

Having satisfied myself that the financial statements of the charity are not required to be audited under Part 16 of the 2006 Act and are eligible for independent examination, I report in respect of my examination of the charity's financial statements carried out under the Charities Act (the Act). In carrying out my examination I have followed all the applicable Directions given by the Charity Commission under the Act.

**Independent examiner's statement**

I have completed my examination. I confirm that no matters have come to my attention in connection with the examination giving me cause to believe that in any material respect:

1. accounting records were not kept in respect of the charity as required by section 386 of the 2006 Act; or
2. the financial statements do not accord with those records; or
3. the financial statements do not comply with the accounting requirements of section 396 of the 2006 Act other than any requirement that the accounts give a true and fair view which is not a matter considered as part of an independent examination; or
4. the financial statements have not been prepared in accordance with the methods and principles of the Statement of Recommended Practice for accounting and reporting by charities applicable to charities preparing their accounts in accordance with Section 1A "Small Entities" of Financial Reporting Standard 102 "The Financial Reporting Standard applicable in the UK and Republic of Ireland".

I have no concerns and have come across no other matters in connection with the examination to which attention should be drawn in this report in order to enable a proper understanding of the financial statements to be reached.



.....  
Neil Harris FCA BSc (Hons)

Cygnat Accounting Limited  
37 Rossell Drive  
Stapleford  
Nottingham  
NG9 7EG

Dated: .....

21.10.2025

**SICKLE CELL AND THALASSAEMIA SUPPORT PROJECT (WOLVERHAMPTON)**

**STATEMENT OF FINANCIAL ACTIVITIES (INCLUDING INCOME AND EXPENDITURE ACCOUNT)  
FOR THE YEAR ENDED 31ST MARCH 2025**

	Notes	Unrestricted Funds £	Restricted Funds £	Total Funds 2025 £	Total Funds 2024 £
<b>INCOME FROM:</b>					
Donations and other income		50,164	-	50,164	90,001
Investment income		26,735	-	26,735	18,593
Charitable activities:					
Service level agreements from:					
Black Country ICB Wolverhampton Place		-	116,414	116,414	115,720
Black Country ICB Dudley Place		-	17,065	17,065	16,962
Walsall Healthcare NHS Trust		-	51,142	51,142	50,773
<b>TOTAL INCOME</b>		<u>76,899</u>	<u>184,621</u>	<u>261,520</u>	<u>292,049</u>
<b>EXPENDITURE ON:</b>					
Raising funds	1	300	13,086	13,386	10,981
Charitable activities	2	<u>7,243</u>	<u>264,724</u>	<u>271,967</u>	<u>230,534</u>
<b>TOTAL EXPENDITURE</b>		<u>7,543</u>	<u>277,810</u>	<u>285,353</u>	<u>241,515</u>
Net incoming / (expenditure) before gain or loss on investments		69,356	(93,189)	(23,833)	50,534
Unrealised gain/(loss) on investments		1,872	-	1,872	4,317
Balances brought forward as at 1 April 2024		<u>535,143</u>	<u>197,969</u>	<u>733,112</u>	<u>678,261</u>
Balances carried forward as at 31 March 2025		<u>606,371</u>	<u>104,780</u>	<u>711,151</u>	<u>733,112</u>

The statement of financial activities includes all gains and losses recognised in the year.

All income and expenditure derive from continuing activities.

The statement of financial activities also complies with the requirements for an income and expenditure account under the Companies Act 2006.

The notes form part of these financial statements



**SICKLE CELL AND THALASSAEMIA SUPPORT PROJECT (WOLVERHAMPTON)**

**NOTES TO THE STATEMENT OF FINANCIAL ACTIVITIES  
FOR THE YEAR ENDED 31ST MARCH 2025**

	Unrestricted Funds £	Restricted Funds £	Total Funds 2025 £	Total Funds 2024 £
<b>1 RAISING FUNDS</b>				
Wages	193	9,451	9,644	7,844
Social Security	15	729	744	483
Pensions	28	1,386	1,414	1,186
Repairs & maintenance	10	182	192	144
Telephone	7	329	336	343
Sundry expenses	7	143	150	117
Postage, printing & stationery	8	153	161	116
Rent & service charge	24	447	471	471
Insurance	3	171	174	173
Depreciation - office equipment	-	4	4	4
Bank charges	5	91	96	100
	<u>300</u>	<u>13,086</u>	<u>13,386</u>	<u>10,981</u>
<b>2 CHARITABLE ACTIVITIES</b>				
Wages	1,832	181,406	183,238	149,046
Social Security	283	13,854	14,137	9,180
Pensions	537	26,331	26,868	22,538
Staff training	-	300	300	1,435
Travelling	75	1,434	1,509	1,883
Repairs & maintenance	182	3,463	3,645	2,742
Social hardship donation	811	-	811	1,240
Social support	-	-	-	12,736
Consultancy service development	-	1,245	1,245	1,500
Subscriptions	2,180	-	2,180	2,085
Telephone	128	6,266	6,394	6,509
Sundry expenses	143	2,713	2,856	2,220
Postage, printing & stationery	153	2,899	3,052	2,199
Rent & service charge	179	8,770	8,949	8,949
Insurance	66	3,238	3,304	3,291
Depreciation - office equipment	4	68	72	85
Support costs:				
Board expenses	20	382	402	123
Accountancy	77	1,473	1,550	1,550
Professional fees	573	10,882	11,455	1,223
	<u>7,243</u>	<u>264,724</u>	<u>271,967</u>	<u>230,534</u>

The notes form part of these financial statements

**SICKLE CELL AND THALASSAEMIA SUPPORT PROJECT (WOLVERHAMPTON)**

**BALANCE SHEET  
31ST MARCH 2025**

		2025	2024
	Notes	£	£
<b>Fixed assets</b>			
Tangible assets	4	428	504
<b>Current assets</b>			
Debtors	5	12,910	7,190
Investments	6	54,796	52,924
Cash at bank and in hand		<u>729,567</u>	<u>760,334</u>
		797,273	820,448
<b>Creditors: Amounts falling due within one year</b>	7	<u>(1,550)</u>	<u>(2,840)</u>
<b>Net current assets</b>		<u>795,723</u>	<u>817,608</u>
<b>Total assets less current liabilities</b>		796,151	818,112
<b>Creditors: Amounts falling due within one year</b>	8	<u>85,000</u>	<u>85,000</u>
<b>Net assets</b>		<u>711,151</u>	<u>733,112</u>
<b>Income funds</b>			
Unrestricted funds:			
General funds		526,371	455,143
Designated funds		<u>80,000</u>	<u>80,000</u>
		606,371	535,143
Restricted funds		<u>104,780</u>	<u>197,969</u>
<b>Total income funds</b>		<u>711,151</u>	<u>733,112</u>

The company is entitled to exemption from audit under Section 477 of the Companies Act 2006 for the year ended 31st March 2025.


The directors acknowledge their responsibilities for complying with the requirements of the Companies Act 2006 with respect to accounting records and the preparation of financial statements.

The members have not required the company to obtain an audit of its financial statements for the year ended 31st March 2025 in accordance with Section 476 of the Companies Act 2006.

These financial statements have been prepared in accordance with the provisions applicable to companies subject to the small companies regime.

The financial statements were approved by the Board of Trustees on ..... and were signed on its behalf by:

  
L Bell  
Director/Trustee

  
C R Croisdale  
Director/Trustee

Company registration number 03575079

## **SICKLE CELL AND THALASSAEMIA SUPPORT PROJECT (WOLVERHAMPTON)**

### **NOTES TO THE FINANCIAL STATEMENTS FOR THE YEAR ENDED 31ST MARCH 2025**

#### **1. Accounting policies**

##### **Charity information**

Sickle Cell and Thalassaemia Support Project (Wolverhampton) is a private company limited by guarantee incorporated in England and Wales. The registered office is Paycare House, 1st Floor, George Street, Wolverhampton, WV2 4DX. The members of the company are the trustees names on page 1. In the event of the charity being wound up, the liability in respect of the guarantee is limited to £1 per member of the charity.

##### **Accounting convention**

The financial statements have been prepared under the historical cost convention and in accordance with the provisions of Section 1A "Small Entities" of Financial Reporting Standard 102 "The Financial Reporting Standard applicable in the UK and Republic of Ireland", the Charities Act, the Companies Act 2006 and the Statement of Recommended Practice: "Accounting and Reporting by Charities" (FRS 102) with the exception of accounting for the deficit on the defined benefit pension scheme, for which provision has been made as set out below and in note 9.

The financial statements are prepared in sterling, which is the functional currency of the charity. Monetary amounts in these financial statements are rounded to the nearest £.

##### **Charitable funds**

Unrestricted funds are available for use at the discretion of the trustees in furtherance of their charitable objectives.

Designated funds comprise unrestricted funds that have been set aside by the trustees for particular purposes. The aim and use of each designated fund is set out in the notes to the financial statements.

Restricted funds are subject to specific conditions by donors as to how they may be used. The purposes and uses of the restricted funds are set out in the notes to the financial statements.

##### **Income**

Income is recognised when the charity is legally entitled to it after any performance conditions have been met, the amounts can be measured reliably, and it is probable that income will be received.

Cash donations are recognised on receipt. Other donations are recognised once the charity has been notified of the donation, unless performance conditions require deferral of the amount. Income tax recoverable in relation to donations received under Gift Aid or deeds of covenant is recognised at the time of the donation.

Gifts in kind donated for distribution are included at valuation and recognised as income when they are distributed to the projects. Gifts donated for resale are included as income when they are sold. Donated facilities are included at the value to the charity where this can be quantified and a third party is bearing the cost. No amounts are included in the financial statements for services donated by volunteers.

##### **Expenditure**

Expenditure is recognised once there is a legal or constructive obligation to transfer economic benefit to a third party, it is probable that a transfer of economic benefits will be required in settlement, and the amount of the obligation can be measured reliably.

Expenditure is classified by activity. The costs of each activity are made up of the total of direct costs and shared costs, including support costs involved in undertaking each activity. Direct costs attributable to a single activity are allocated directly to that activity. Shared costs which contribute to more than one activity and support costs which are not attributable to a single activity are apportioned between those activities on a basis consistent with the use of resources. Central staff costs are allocated on the basis of time spent, and depreciation charges are allocated on the portion of the asset's use.

## SICKLE CELL AND THALASSAEMIA SUPPORT PROJECT (WOLVERHAMPTON)

### NOTES TO THE FINANCIAL STATEMENTS FOR THE YEAR ENDED 31ST MARCH 2025

#### 1. Accounting policies (continued)

All expenditure is accounted for on an accruals basis and has been classified under headings that aggregate all costs related to the category. Where costs cannot be directly attributed to particular headings they have been allocated to activities on a basis consistent with use of the resources.

Fund-raising costs are those incurred in seeking voluntary contributions and do not include the costs of disseminating information in support of the charitable activities. Support costs are costs incurred directly in support of expenditure on the objects of the charity and include project management carried out at headquarters. Management and administration costs are those incurred in connection with the administration of the charity and compliance with constitutional and statutory requirements.

#### **Tangible fixed assets**

Tangible fixed assets are initially measured at cost and subsequently measured at cost or valuation, net of depreciation and any impairment losses.

Depreciation is recognised so as to write off the cost or valuation of assets less their residual values over their useful lives on the following bases:

Plant and machinery	- 25% on cost
Fixtures and fittings	- 15% & 25% on reducing balance

The gain or loss arising on the disposal of an asset is determined as the difference between the sale proceeds and the carrying value of the asset, and is recognised in the statement of financial activities.

#### **Investments**

Investments are stated at market value at the balance sheet date. The SOFA includes the net gains or losses arising on revaluation throughout the year.

#### **Pensions**

The company operates a defined benefit pension scheme which provides benefits based on final pensionable pay. The scheme is administered by the West Midlands Pension Fund, and the assets are held independently of the finances of the company. The most recent full actuarial valuation was carried out at 31 March 2022. The projected valuation deficit in the scheme at 31 March 2022 was £512,000 the Board has considered this situation and feels that because of the age of the work force this deficit can be eliminated over a period of time and currently a total provision of £85,000 has been made to date in these accounts.

#### **Restricted Funds**

Monies received as grants for particular purposes are held as separate funds and are credited to the Statement of Financial Activities when costs of the particular relevant projects are incurred.

#### **Leases**

Rentals payable under operating leases, including any lease incentives received, are charged to income on a straight line basis over the term of the relevant lease.

**SICKLE CELL AND THALASSAEMIA SUPPORT PROJECT (WOLVERHAMPTON)**

**NOTES TO THE FINANCIAL STATEMENTS  
FOR THE YEAR ENDED 31ST MARCH 2025**

**2. STAFF COSTS**

	2025	2024
	£	£
Wages and salaries	192,882	156,890
Social security costs	14,881	9,663
Other pension costs	<u>28,282</u>	<u>23,724</u>
	<u>236,045</u>	<u>190,277</u>

The average monthly number of employees during the year was as follows:

	2025	2024
Charitable Workers	<u>5</u>	<u>5</u>

One employee (2024: nil) received total emoluments of more than £60,000 but less than £70,000. No employees (2024: nil) received total emoluments above £70,000.

**3. OPERATING PROFIT/(LOSS)**

	2025	2024
	£	£
Depreciation - owned assets	<u>76</u>	<u>89</u>
Directors' emoluments and other benefits etc	<u>-</u>	<u>-</u>

**4. TANGIBLE FIXED ASSETS**

	Plant and machinery	Fixtures and fittings	Total
	£	£	£
<b>Cost</b>			
At 1st April 2024	23,824	13,391	37,215
Additions	-	-	-
Disposals	<u>-</u>	<u>-</u>	<u>-</u>
At 31st March 2025	<u>23,824</u>	<u>13,391</u>	<u>37,215</u>
<b>Depreciation</b>			
At 1st April 2024	23,824	12,887	36,711
Charge for year	-	76	76
Eliminated on disposals	<u>-</u>	<u>-</u>	<u>-</u>
At 31st March 2025	<u>23,824</u>	<u>12,963</u>	<u>36,787</u>
<b>Net book value</b>			
At 31st March 2025	<u>-</u>	<u>428</u>	<u>428</u>
At 31st March 2024	<u>-</u>	<u>504</u>	<u>504</u>



**SICKLE CELL AND THALASSAEMIA SUPPORT PROJECT (WOLVERHAMPTON)**

**NOTES TO THE FINANCIAL STATEMENTS  
FOR THE YEAR ENDED 31ST MARCH 2025**

<b>5. DEBTORS: AMOUNTS FALLING DUE WITHIN ONE YEAR</b>	<b>2025 £</b>	<b>2024 £</b>
Prepayments and accrued income	<u>12,910</u>	<u>7,190</u>
<b>6. CURRENT ASSET INVESTMENTS</b>	<b>2025 £</b>	<b>2024 £</b>
Architas MA Passive Moderate S Acc	<u>54,796</u>	<u>52,924</u>
<b>7. CREDITORS: AMOUNTS FALLING DUE WITHIN ONE YEAR</b>	<b>2025 £</b>	<b>2024 £</b>
Social security and other tax	-	-
Accruals and deferred income	<u>1,550</u>	<u>2,840</u>
	<u>1,550</u>	<u>2,840</u>
<b>8. CREDITORS: AMOUNTS FALLING DUE AFTER MORE THAN ONE YEAR</b>	<b>2025 £</b>	<b>2024 £</b>
Provision for defined pension scheme deficit (see note 9)	<u>85,000</u>	<u>85,000</u>
<b>9. PENSION SCHEME</b>	<b>2025 £</b>	<b>2024 £</b>
Value of scheme assets and liabilities		
Market value of assets	820,000	820,000
Present value of scheme liabilities	<u>(1,332,000)</u>	<u>(1,332,000)</u>
Pension scheme deficit	<u>(512,000)</u>	<u>(512,000)</u>

The above is based on a valuation at 31 March 2022. Provision of £85,000 has been made towards the above deficit.

**SICKLE CELL AND THALASSAEMIA SUPPORT PROJECT (WOLVERHAMPTON)**

**NOTES TO THE FINANCIAL STATEMENTS  
FOR THE YEAR ENDED 31ST MARCH 2025**

**10. OPERATING LEASE COMMITMENTS**

At the reporting end date the charity had outstanding commitments for future minimum lease payments under non-cancellable operating leases, which fall due as follows:

	2025 £	2024 £
Within one year	-	-
Between two and five years	<u>-</u>	<u>-</u>
	<u>-</u>	<u>-</u>

**11. ANALYSIS OF NET ASSETS BETWEEN FUNDS**

	Fixed Assets £	Other Net Assets £	Total Net Assets £
Unrestricted Funds:			
General Funds	-	526,371	526,371
Designated Funds	<u>-</u>	<u>80,000</u>	<u>80,000</u>
	-	606,371	606,371
Restricted Funds	<u>428</u>	<u>104,352</u>	<u>104,780</u>
	<u>428</u>	<u>710,723</u>	<u>711,151</u>

**12. RESTRICTED FUNDS**

<b>Fund</b>	<b>Purpose of Fund</b>	<b>Reason for Restriction</b>
Black Country ICB Wolverhampton Place	Support the antenatal and newborn screening programme and provide counselling and support to those affected	Wolverhampton residents only
Black Country ICB Dudley Place	Support affected children with long term conditions to manage their condition through various social and community interventions	Dudley residents only
Walsall Healthcare NHS Trust	Support the antenatal and newborn screening programme and provide counselling and support to those affected	Walsall residents only