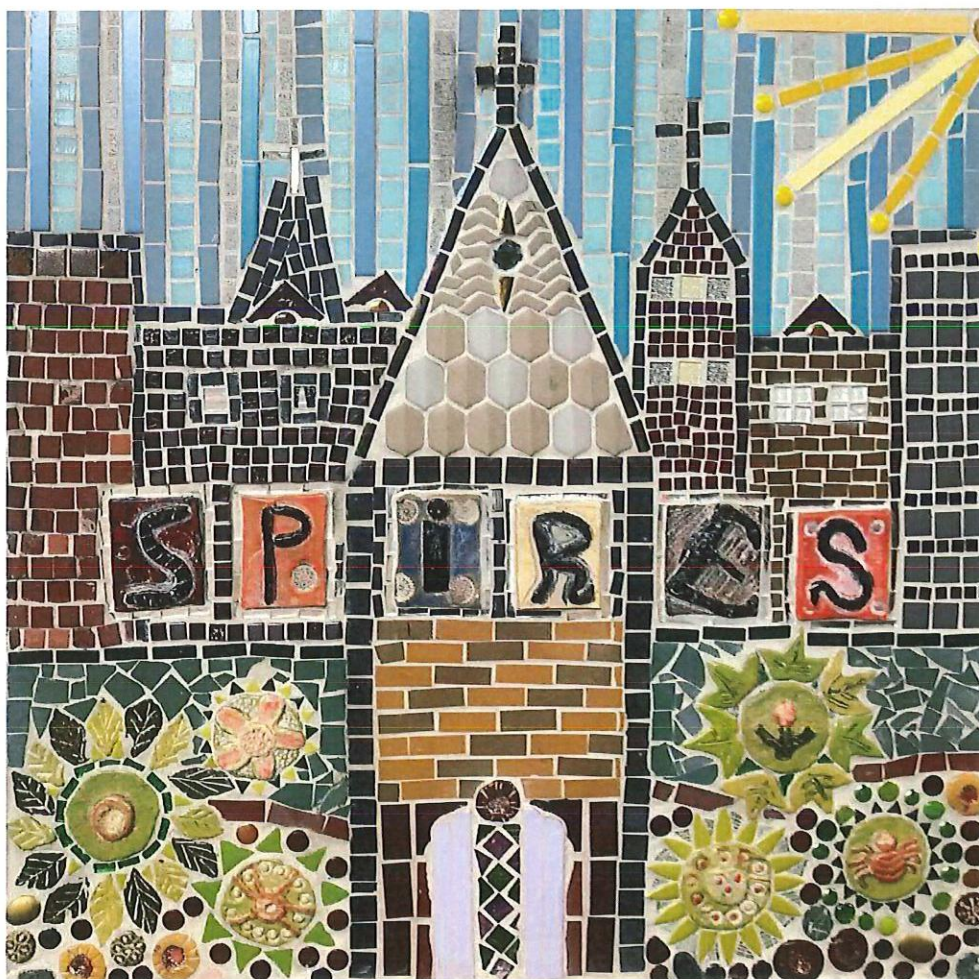


REGISTERED COMPANY NUMBER: 03785409 (England and Wales)
REGISTERED CHARITY NUMBER: 1076888

THE SPIRES CENTRE

Unaudited Financial Statements for the Year Ended 30 September 2020



Tudor John Limited
Nightingale House
46-48 East Street
Epsom
Surrey
KT17 1HQ

THE SPIRES CENTRE

Contents of the Financial Statements for the year ended 30 September 2020

	Page
Report of the Trustees	1 to 14
Independent Examiner's Report	15
Statement of Financial Activities	16
Balance Sheet	17 to 18
Cash Flow Statement	19
Notes to the Cash Flow Statement	20
Notes to the Financial Statements	21 to 30
Detailed Statement of Financial Activities	31

THE SPIRES CENTRE (REGISTERED NUMBER: 03785409)
Report of the Trustees
for the year ended 30 September 2020

The trustees who are also directors of the charity for the purposes of the Companies Act 2006, present their report with the financial statements of the charity for the year ended 30 September 2020. The trustees have adopted the provisions of Accounting and Reporting by Charities: Statement of Recommended Practice applicable to charities preparing their accounts in accordance with the Financial Reporting Standard applicable in the UK and Republic of Ireland (FRS 102) (effective 1 January 2019).

OBJECTIVES AND ACTIVITIES

Summary of the charity's objects

Spires is an award-winning charity that has been working with homeless and disadvantaged people in South London, since 1990. Through the provision of counselling, information, advice and guidance, and by meeting people's most basic needs for food and clothing, we offer people choice and opportunity for positive change.

Our Work:

We aim to create a community where no one is left without support, information, advice and guidance and people are enabled to make the choices that are right for them.

We will engage with the most vulnerable, isolated and lonely people and enable them to take advantage of the opportunities and inclusive pathways that will lead them to a place of greater security and hope.

Our service users:

Most of our clients are homeless or have insecure accommodation;

Many face complex issues such as long-term unemployment, poor mental and physical health;

Some are involved in sex working;

Some service users have no recourse to public funds;

Many suffer with domestic and sexual violence, addiction and substance misuse.

For many people, substance misuse is a way of coping with multiple trauma. Stopping drugs and alcohol means having to deal with their past bad experiences. Spires staff support service users on their recovery journey until they are ready to stand alone and take their rightful place in our community.

"Spires – Creating opportunity for change"



Our Volunteers:

For years Spires has relied on the hard work of a team of volunteers, but from March 2020 many had to stop working due to the Coronavirus Pandemic.

Our Trustees, who volunteer their time, continued to meet via Zoom and led the charity through what has been one of the most challenging times for service users and staff in Spires' 30 year history. As lockdown eased in July 2020, some of our volunteers returned, but with further lockdowns to come, we had to keep numbers to a minimum. Staff worked on their own for much of the last six months and served breakfast to rough sleepers alone. We hope that we will be able to welcome back many of our volunteers in the year ahead and will look to create new volunteer roles that will support staff in their work.

THE SPIRES CENTRE (REGISTERED NUMBER: 03785409)
Report of the Trustees
for the year ended 30 September 2020

Significant activities

The whole purpose of Spires is to give people the opportunity to make changes in their lives that will help them move from distress, isolation and insecurity to a brighter, more secure future.

The core of Spires' work is the provision of developmental services for individuals who are homeless and disadvantaged by their life circumstances. Although our centre allows us to deal with people's immediate needs (food, showers and a change of clothes), our aim is to break the cycle of homelessness and disadvantage and to help our clients build resilience and the need for crisis intervention, therefore, all of our services focus on longer-term solutions. These services include one-to-one key worker support, housing and benefits advice, tenancy support, mental health support, access to onsite primary healthcare clinics, drug and alcohol advice and referrals, and specialist work with women involved in sex work and other vulnerable women as well as a range of entry level adult learning activities.

Many individuals access Spires because they know they will get professional support and advice and good links with external specialist agencies. Others come because they struggle to fit into broader society, have little support or encouragement to move forward with their lives and have little opportunity elsewhere to build a social network of support. The aim for all of our service users, whatever their starting point, is that they will receive a level of support that will increase their confidence and enable them to make change and manage their own lives in a positive and fulfilling way. We do not see ourselves as a destination service and aim to create pathways and offer choices for people to take when they are ready and able. By linking people to a wider support network, we help build resilience and enable their independence.

Spires has always been committed to finding solutions, particularly for those who are not eligible for support from statutory services and this continues to be a priority. With rough sleeping continues to be an issue in Lambeth and surrounding boroughs and it is of paramount importance that we offer our clients the chance to develop the tools and build the confidence to find their own solutions to overcoming homelessness and social exclusion.

Some clients may only need to visit us once. They have their immediate needs provided for and can be referred straight into the appropriate agency. Our more isolated and entrenched clients however will often take a lot longer. They have particularly chaotic lifestyles, and for them progress can be attending a meeting on time, visiting our outreach nurse or attending one of our drop-in adult learning classes.

Our Streetlink outreach project, part of our Women's Service, continues to be the major provider of outreach services to street-based sex workers in South London delivering high quality services to women in need. Our centre services offer specialist support to sex workers, people who are transgender and people from the LGBTIQ+ community who are involved in any type of sex work.

Linking our clients to appropriate service providers both within Spires and those from external agencies remains a key objective for this project. Having been working with those involved in sex work or those at risk of becoming involved since 1998, our experience tells us that it is a harsh reality that the majority of the women we work with are facing multiple complex issues. Sexual and domestic violence as well as issues of unemployment, addiction and insecure housing are common themes. Many women have also been in care and are dealing with the trauma of child abuse; others have been in and out of prison. To that end, we have forged many local partnerships over the years with other voluntary and statutory services including the police, refuges and local authorities to ensure that our clients get the best support possible.

Our Adult Learning Centre underpins all our client work at Spires and we continue to specialise in offering adult learning opportunities for people in the community who are often excluded from conventional learning. We believe that education and employment are the main routes out of poverty and an important way of stopping the vicious circle of homelessness. As part of the Lambeth Adult Learning Service our aim is to ensure there are no barriers to learning. Even our clients with the most vulnerable and chaotic lifestyles are encouraged to participate. We deliver easily accessible courses, while also offering an opportunity to learn in a positive and supportive environment. Our tutors help people to acquire the skills that will enable them to progress further with either more training or employment opportunities.

Through all of our services at Spires, we believe that by offering consistent, practical support and long term guidance, we will enable our clients to have the opportunity to be able to climb out of their cycle of poverty and disadvantage and rebuild their lives.

THE SPIRES CENTRE (REGISTERED NUMBER: 03785409)
Report of the Trustees
for the year ended 30 September 2020

FINANCIAL REVIEW

Review of the charity's financial performance and position

The Statement of Financial Activities shows that incoming resources increased to £723,388 (an increase of £62,150 over 2019). Net outgoing resources in the year were £654,450 (a decrease of £30,348 on 2019)

Net assets in the balance sheet of £354,719 at the year-end include functional fixed assets of £30,819 which to all intents and purposes are sunk costs. £53,513 of this relates to restricted funds, the balance being unrestricted funds.

Principal funding sources

A combination of funding from grant-making trusts and a contract with Lambeth Adult Learning Services has enabled the continuation of Spires's essential services to individuals in need. Spires remains equally appreciative of financial and in-kind support from many individuals, church communities, schools and supporters that continue to support our work each year so generously.

Grants from trusts account for approximately 53% of our annual income, with contracts and other assistance completing the picture at Spires. In an uncertain climate, this combination of funding has enabled us to continue to deliver all our services and provide the security needed to make plans for the period ahead. The challenge for all small organisations like Spires is to achieve adequate and longer-term funding into the future.

Principal financial management policies

Spires has a simple financial structure and model revolving around the need to sustain a breakeven position, hopefully supported by a prudent level of free reserves. Surplus funds are maintained on bank deposit so as to maximise the opportunity to earn interest.

The Trustees review cash flow projections for a year ahead at each meeting and efforts to maintain grant funding are tailored according to the relative risk of activities running out of financial support. A key challenge is balancing the effort made to raise funds in relation to each activity's relative 'attraction' to potential funding sources.

Reserves policy

Free reserves are unrestricted funds not invested in fixed assets or otherwise committed. The Trustees have established a policy of aiming to maintain free reserves of between three and six months of total resources expended, which equates to a figure of between £162,500 and £325,000. The Trustees are of the opinion that reserves within this range is necessary to provide effective management and maintenance of services. In the current year free reserves are a surplus of £118,960.

THE SPIRES CENTRE (REGISTERED NUMBER: 03785409)
Report of the Trustees
for the year ended 30 September 2020

FUTURE PLANS

A new lease has been signed with St Leonard's Church (Spires' landlord) that runs until September 2023 with an option to renew for 1 year. Spires plans to move out of St Leonard's Church Hall as soon as we can find suitable accommodation.

We are developing a new Hub and Spoke service delivery model that we believe will better meet the needs of our service users and offer cost efficiency savings in the medium to long term.

We are committed to our work with homeless people and those at risk of homelessness and to supporting vulnerable women. We plan to grow these services by adapting our model and working in partnership with like-minded organisations.

We will continue to enhance our tenancy sustainment services and do more homelessness prevention work.

Our plans to enhance our adult learning service and provide accredited courses, whilst delayed due to Covid, have not changed.

The financial climate continues to be a challenge with high demand on the trust and foundations resources that Spires has relied on for many years. We will look to diversify our funding streams and reduce our reliance on grant income.

Coronavirus statement

The effects of the Coronavirus pandemic are being felt across the world and are having a major economic impact on individuals, businesses and charities alike.

Spires has remained open to the most vulnerable in our community. It has been possible to operate revised service models that protect service users, volunteers and staff whilst still offering people adult learning, information, advice and guidance and providing the practical support that individuals suffering financial hardship need so badly. This also enables us to meet our responsibilities under existing grant funder conditions.

During lockdown, we continued to receive fantastic support from the local community in the form of individual giving and food donations to help us. Grants from the National Lottery, Landaid, CAF, Martin Lewis Fund, Buzzacott, The London Community Foundation and Lambeth CVS, specifically to help us manage and support people at this difficult time, helped us to cover the increased costs of our work.

The trustees have inevitable concerns regarding our funding prospects in the year ahead. Spires relies heavily on support from Trusts and Foundations and it is still not yet clear what impact the pandemic will have on their grant making capabilities in the medium term.

Whilst our funding prospects are in some doubt, we have seen the need for our services grow significantly due to a rise in unemployment and increases in homelessness, mental health difficulties and domestic violence, all linked to this crisis.

THE SPIRES CENTRE (REGISTERED NUMBER: 03785409)
Report of the Trustees
for the year ended 30 September 2020

Review of the year

The challenges of the Covid Pandemic.

The seven months leading up to 30th September were enormously challenging for us all, not least for those without a place to call home.

At Spires, we saw people in really desperate situations; women suffering domestic violence, families told to leave their accommodation because jobs have been lost and they can't afford the full rent and, as always, those who live on the streets for whom Spires is a lifeline.

Throughout the Covid Crisis we have remained open, albeit, with a reduced service. Our "Social" groups had to stop, but we continued to offer a breakfast to rough sleepers every weekday morning and established ourselves as a hub for the Lambeth Streetlink Team. Together, we got over 60 people off the streets and into hotel/B&B accommodation. Many were without recourse to public funds and Spires provided food parcels to keep them going during Lockdown when they were unable to work.

We maintained contact with many of the vulnerable women who use our services. We provided emotion support to those who were isolated and lonely and practical support, by way of regular food parcels, for those at the highest risk from a Covid infection. We set up a Freephone number (0808 164 5246) to make it easier for those in need to make contact and arranged socially distance assessment and key work meetings. We are proud of the work the team have done over the last few months; giving up and furloughing staff was not an option we felt able to consider.

We don't know what the months ahead will bring, but the last 30 years has shown us that, when things get tough, it is the most vulnerable in our community that suffer the most. We have no doubt that Spires' services will be in high demand in the months ahead. We expect unemployment and eviction rates to rise and need to prepare for those who turn to us in need.

Meeting people's most basic need for food is essential but Spires can do so much more. Our staff work with individuals on a one-to-one basis, complete a full assessment of their needs and agree a plan that gives them the opportunity to take back control of their lives and regain their security.

Staff worked hard to ensure our operations remained Covid secure.

The work done in the last financial year renewing our IT infrastructure enabled Spires' staff to continue their work at home and maintain services.

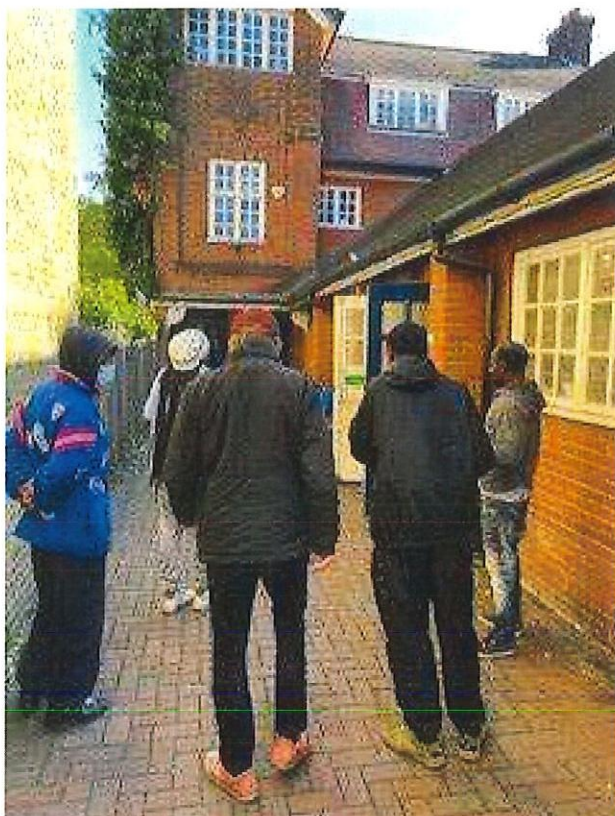
Housing and Homelessness Services

Although we were unable to allow rough sleepers into our hall all together, we served a hot breakfast outside and used the opportunity to engage on a one-to-one basis with those needing additional support. We saw an increase in the number of people coming onto the streets for the first time; sofa surfers asked to move on when families were locked down and several guys, aged 50+, who had been in private rented accommodation and unable to pay rent when they lost their work or were put on furlough.

The government's "Everyone in" Strategy worked extremely well although the numbers of people eligible had been vastly under-estimated. Spires staff made referral after referral and worked effectively with the Lambeth Streetlink Team. Those without recourse to public funds were given accommodation but had no means of buying food and their usual "as and when" work had stopped. With funding received, we were able to purchase bulk supplies of food to supplement community donations. Many longstanding rough sleepers thrived with a roof over their heads; many made successful claims for residency and some started to address substance misuse issues. The whole exercise really demonstrated the advantage of a "Housing First" strategy in combating the underlying causes of homelessness.

"During lockdown Spires helped me get accommodation - Spires has saved my life" GD

THE SPIRES CENTRE (REGISTERED NUMBER: 03785409)
Report of the Trustees
for the year ended 30 September 2020



There are a group of rough sleepers who, because of their mental health, learning disabilities, substance misuse or challenging behaviours, either could not be accepted for accommodation or would not have been able to cope with sharing with others and Spires remained a lifeline for these people.

We saw an increase in the number of people with tenancy issues and have recruited specialist staff to work with and support them.

For many, the challenge of sharing kitchens and bathrooms with others, who may have different values and backgrounds, can become too much, particularly when there are mental health difficulties and substance misuse issues involved.; it's difficult enough to share our homes with the people we love most on the world. However, if tenancies breakdown, tenants are often regarded as having made themselves intentionally homeless. At Spires we have set up workshops to help people understand their rights and responsibilities and developed the skills to live independently. We also offer the support and advice needed to help individuals cope when the challenges get too much.

“Spires is my lifeline” RS

Case Study

Al is a 31 yr. old Afghan refugee who fled his home and came to the UK over 10 years ago; he became an entrenched rough sleeper. Suffering from multiple trauma Al was distrusting of the authorities.

He had spent 8 years hiding in a park buried deep in a wooded area tunnelling underneath bushes. Al was a prolific self-harmer and would burn himself with cigarettes and cut himself. He developed diabetes and kidney problems, and this added to his anxiety.

Over the years Spires staff have formed a strong enough relationship with Al for him to start to trust us. When the pandemic arrived, we managed to get him temporary accommodation and then into private rented housing. We continue to support Al to maintain his tenancy.

Women's Services

Whilst we were unable to run our weekly women's group, we maintained contact by phone with many of our regulars- in particular, those who needed to shield.

Outreach to the women working on Brixton Hill stopped initially. With the first lockdown being followed pretty strictly and pubs closed there were few men around to buy their services. The women's need for money to live and buy drugs remained high and with all but essential shops closed, there were few opportunities to acquire the money they needed. Spires staff supported the women, many of whom stayed in crack houses, with food, toiletries and clothing. The levels of abuse the women suffered increased. Spires' staff were able to support those turning to us for help, find them safe accommodation, sort out benefit entitlements and link them with substance misuse services. Many of the women had experience multiple trauma and the emotional support staff gave was key to ensuring women could maintain an alternative lifestyle and take advantage of the opportunities and choices offered to them.

THE SPIRES CENTRE (REGISTERED NUMBER: 03785409)
Report of the Trustees
for the year ended 30 September 2020

What the women say about us:

“I am really happy with Spires, they have really changed my life and I am so grateful.”
L.A

“Just wanted to say thank you for your help, everyone was lovely and friendly and a big WOW, I still don’t believe how fast everything was and you guys put me in a place where I am very comfortable and feel very very safe. Somewhere I can call home, I really thank you Stella you are the best, and many many thanks to Shirley and James. “
R.P

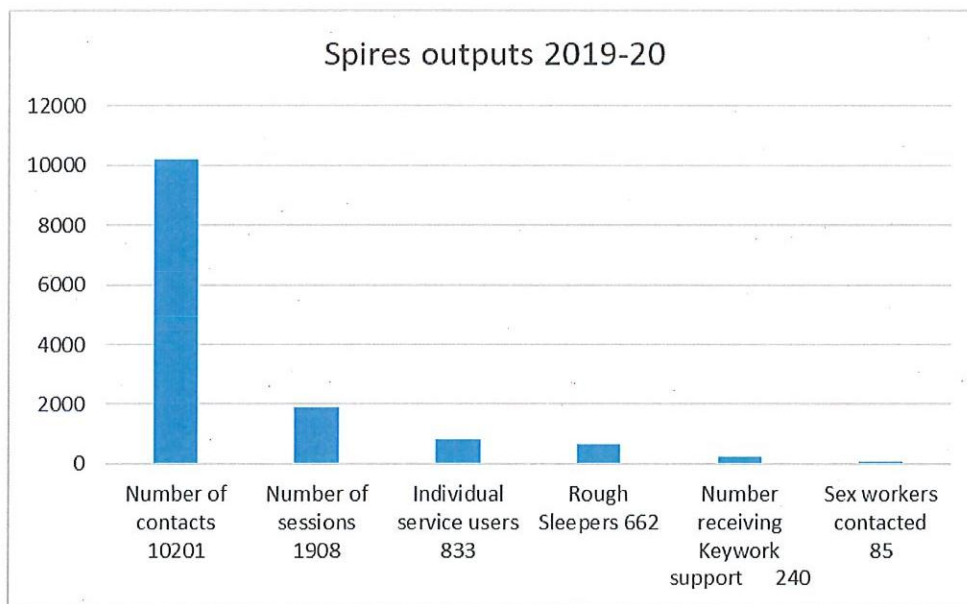
“Well Spires has provided me over the last 10yrs years or probably more, lots of help. Someone to talk to when I’m down, provided condoms for my health, helpline for housing, help with food, arts and crafts, all round manner of things. Don’t know what I’d do without them, well done”.
S.H

Adult Learning

Spires Adult Learning was the first of Lambeth providers to move courses on-line when Lockdown began in March 2020. However, teaching Art, Yoga and Beginners IT on-line, proved a major challenge and we didn’t get the number of learners required to fulfil our contract. Many of Spires’ learners needed to shield and our success in getting 25 Eastern European rough sleepers off the streets meant that, without computers/tablets, they weren’t available for ESOL classes.

With Spires’ client base accessing services in very different ways, we will develop courses that are better suited to blended learning in the future and thereby ensure we can meet our contract targets.

Outputs for the year



THE SPIRES CENTRE (REGISTERED NUMBER: 03785409)

Report of the Trustees for the year ended 30 September 2020

STRUCTURE, GOVERNANCE AND MANAGEMENT

Governing Document

The charity is controlled by its governing document, a deed of trust, and constitutes a limited company, limited by guarantee, as defined by the Companies Act 2006.

Spires is a private charitable company limited by guarantee, having no share capital, governed by its memorandum and articles of association. The liability of each member in the event of a winding up is £10. The charitable company does not use 'Limited' in its name by virtue of section 30 of The Companies Act 2006.

The affairs of the company are managed by the Trustees who are obliged to meet at least four times a year for this purpose. The Trustees may number between three and ten.

The post of Trustee

Trustees are recruited through advertising followed by an application and interview. Subsequent appointment is by an ordinary resolution of the Board. Trustees are subject to periodic retirement and reappointment for a maximum of two, 3 year terms.

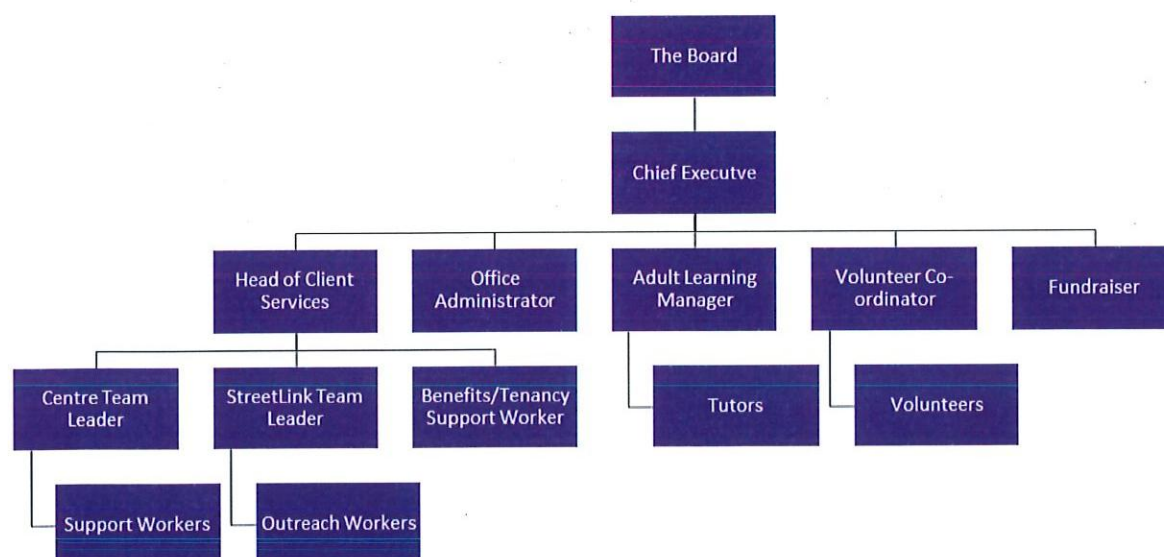
Trustee induction and training

New Trustees visit the Centre to meet staff, volunteers and clients and to understand fully the nature of Spires work.

New Trustees are encouraged to shadow Spires's key staff by arrangement. Further specific skills training deemed necessary to undertake the role of Trustee may be arranged in conjunction with Spires Chair of Trustees and Spires Chief Executive.

Management and organisation

The Trustees meet every two months to coordinate the general strategy, direction and management of Spires, receiving detailed reports from Spires Chief Executive and other officers as required. The day-to-day affairs of Spires are delegated to the Chief Executive. The organisation chart is as follows:



THE SPIRES CENTRE (REGISTERED NUMBER: 03785409)
Report of the Trustees
for the year ended 30 September 2020

Related parties

Spires is committed to working in partnership with other agencies both statutory and voluntary. These relationships enable Spires's staff to access any additional specialist help our clients need and prevents duplication of work. Key partnerships include other organisations supporting homeless and vulnerable people, specialist drug and alcohol treatment and support agencies, primary healthcare services, providers of both emergency and permanent accommodation, local authority social care teams and adult education and training partners and providers.

Membership and agency link organisations are listed towards the end of this report.

Risk management

The trustees have assessed the major risks to which the charitable company is exposed and are satisfied that systems are in place to mitigate the exposure to those risks. A full risk register is held at head office and this is fully reviewed annually with priority and new risks identified and reviewed at each trustee meeting.

Spires management and staff team are continuously involved in planning, implementing and reviewing clients' support plans to reflect identified risks, and the on-going employment of safe and effective work practices in line with Spires policies and procedures. Spires' management also ensures that all staff that key work clients are trained to carry out full risk assessments and know when to seek extra support and more specialist internal and external advice.

REFERENCE AND ADMINISTRATIVE DETAILS

Registered Company number
03785409 (England and Wales)

Registered Charity number
1076888

Registered office
8 Tooting Bec Gardens
Streatham
London
SW16 1RB

Trustees

Mr John Clark McKelvie (Resigned 16th November 2019)
Mr Andrew Campbell
Mrs Louise Eyles
Mr Andrew Johnson
Ms Sherine Krause - Chair
Ms Helen Schofield
Ms Schnell Hanson (Appointed 16th November 2019)
Ms Silvia Obrador (Appointed 16th November 2019)
Mr Dan Fairclough (Appointed 27th January 2021)
Ms Rossana Rocchini (Appointed 27th January 2021)

The respective incumbents are Trustees/Directors by virtue of their office.

The Directors of the charitable company are Trustees for the purposes of charity law and throughout this report are collectively referred to as Trustees.

Company Secretary

Mr Nigel P Carpenter

THE SPIRES CENTRE (REGISTERED NUMBER: 03785409)
Report of the Trustees
for the year ended 30 September 2020

Independent examiner

Tudor John Limited
Chartered Accountants
Nightingale House
46-48 East Street
Epsom
Surrey
KT17 1HQ

Bankers:

National Westminster Bank plc, Streatham Branch, 54 Streatham High Road, London SW16 1XE,
Bank of Scotland, 600 Gorgie Road, Edinburgh EH11 3XP and
Barclays Bank, 136 Streatham High Road, Streatham SW16 1BN

THE SPIRES CENTRE (REGISTERED NUMBER: 03785409)

**Report of the Trustees
for the year ended 30 September 2020**

The Spires Centre is a member of:

Homeless Link
Institute of Fundraising
Lambeth Community Empowerment Network
Lambeth MARAC
Lambeth VAWG Forum (Violence Against Women and Girls)
Lambeth Voluntary Action Council
National Council for Voluntary Organisations (NCVO)
Prostitution Action Group - Lambeth
National Ugly Mugs
Women's Resource Centre

Principal Agency Links:

999 Club - Deptford
Ace of Clubs
Alcohol Recovery Project ARP Choices Project
Alone in London
Battersea Drug & Alcohol Services
Bridge Housing Solutions
Brixton Hill Safer Neighbourhood Panel
Brixton Soup Kitchens
City Road (Intervention Detox)
Clearing House (Pan London)
Community Drugs Project
Community Safety Services
Crime Reduction Initiative (CRI)
Croydon Night Watch
Croydon Reach – Thames Reach
Door of Hope
Elevating Lives
Emmaus Lambeth
Equinox
Evolve (Blenheim CDP)
Faith in Action - Merton
Family Learning
Find and Treat - TB
First Steps Trust
Foundation 66
Gaia (Refuge)
Glass Door Homeless Charity
Harrison Housing
His Church Charity
Housing for Women
Job Centre Plus
Kairos Community
Kingston University/ South Bank University
Lambeth Adult Learning
Lambeth Alcohol Services - Lorraine Hewitt House
Lambeth Community Mental Health Services
Lambeth Housing - Vulnerable Adult Pathway
Lambeth Health Inclusion Team
Lambeth Prostitution Group
Lambeth Safer Streets Team
Lambeth Social Services (Adult & CYPS)
Lambeth Tenancy Services
London Housing Trust (LHT)
London Probation – Stockwell
Mainliners / Addaction (services for drug users)

THE SPIRES CENTRE (REGISTERED NUMBER: 03785409)
Report of the Trustees
for the year ended 30 September 2020

Martha Jones House – Thames Reach
Maudsley AAU
MET Police - Lambeth
MET Police - Lewisham
MET Police - Sexual Offences, Exploitation & Child Abuse Command (SOECA0
NHS - Three Boroughs Primary Healthcare Team
ODAAT
Open College Network London Region (OCN London)
Open Doors - East London
Prince's Trust
Probation
Rape Crisis – Croydon (CRASACS)
Rights of Women - Legal
Shelter from the Storm
Shrine (Sexual and Reproductive Health Rights, Inclusion and Empowerment)
SNAP Team (Support Needs Assessment & Placement) - Croydon
SOFAR (Ex Services)
South Bank University
South London & Maudsley NHS Trust (SLAM)
St. Georges Hospital GUM Clinic
St Giles Trust
St. Mungo's (Chrysalis Project)
St Leonard's Church
START (Mental Health Services for Rough Sleepers)
STOLL (Ex Services)
Street Link
Terrence Higgins Trust
Thames Reach / Bondway
Thames Reach - SWITCH (Supporting homeless women with multiple needs)
The Beth Centre - Women in Prison
The Challenge Network
The Nehemiah Project
The Pavement
The Passage
The Robes Project
Thrale Almshouses
Trust (working with women involved in sex work)
Ugly Mugs (UKNSWP)
Violence Against Women & Girls Forum & Strategy Group - Lambeth
Volunteer Centre Croydon
Volunteer Centre Lambeth
Volunteer Centre Merton
Volunteer Centre Wandsworth
Wandsworth Drugs Project
Wandsworth Public Health Team
West London Churches (Winter Shelter)
Women in Prison – Beth Centre
Wrap up London (Hands on London)

THE SPIRES CENTRE (REGISTERED NUMBER: 03785409)

**Report of the Trustees
for the year ended 30 September 2019**

Funders:

We would like to thank the many people have contributed to our work over the last 12 months. The donations of food we receive from individuals, schools and church collection keep our rough sleeper's service well supplied. We are particularly grateful to the individuals and organisations that have been substantial funders of The Spires Centre:

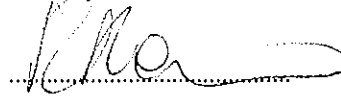
Balham Baptist Church
Beatrice Lang Trust
Bethany Williams
Bishop Thomas Grant School
Bloom Foundation
BNY Melon Community Partnership
Buzzacott LLP
Charles Gibson
Chris Hutchings
Coopers Charity
Crisis UK
Emanuel school
Garfield Weston
Groundwork UK
Highfield Trust
Homeless link - Covid-19
Housing for Women
LandAid
L BLambeth Adult Learning
Lennox Hannay
Leslie Alderidge
LHA
Little Company of Mary
Lloyds Bank Foundation
Neighbourly Limited
Open Minds Social Care
Redfruit
Robert Gavron
Rotary club - Battersea and Clapham
St Luke's Church Battersea
Saint Mary's Church Merton
Sir Charles Thor
South London and Maudsley NHS
The Alexandra Trust
The London Community Foundation
The National Lottery Community Fund
Thomas's School
Vintners Company
W & E Botteriel
Walcott Foundation
White Stuff Foundation
Wimbledon High School
Worshipful Company of Basket Makers
Wyndham Charitable Trust

THE SPIRES CENTRE (REGISTERED NUMBER: 03785409)
Report of the Trustees
for the year ended 30 September 2020

Approved by order of the board of trustees on

26th May 2021

and signed on its behalf by:

A handwritten signature in black ink, appearing to read 'Rossana', written over a horizontal dotted line.

Rossana Rocchini (Treasurer)

**Independent Examiner's Report to the Trustees of
The Spires Centre (Registered number: 03785409)**

Independent examiner's report to the trustees of The Spires Centre ('the Company')

I report to the charity trustees on my examination of the accounts of the Company for the year ended 30 September 2020.

Responsibilities and basis of report

As the charity's trustees of the Company (and also its directors for the purposes of company law) you are responsible for the preparation of the accounts in accordance with the requirements of the Companies Act 2006 ('the 2006 Act').

Having satisfied myself that the accounts of the Company are not required to be audited under Part 16 of the 2006 Act and are eligible for independent examination, I report in respect of my examination of your charity's accounts as carried out under section 145 of the Charities Act 2011 ('the 2011 Act'). In carrying out my examination I have followed the Directions given by the Charity Commission under section 145(5) (b) of the 2011 Act.

Independent examiner's statement

Since your charity's gross income exceeded £250,000 your examiner must be a member of a listed body. I can confirm that I am qualified to undertake the examination because I am a registered member of ICAEW which is one of the listed bodies.

I have completed my examination. I confirm that no matters have come to my attention in connection with the examination giving me cause to believe:

1. accounting records were not kept in respect of the Company as required by section 386 of the 2006 Act; or
2. the accounts do not accord with those records; or
3. the accounts do not comply with the accounting requirements of section 396 of the 2006 Act other than any requirement that the accounts give a true and fair view which is not a matter considered as part of an independent examination; or
4. the accounts have not been prepared in accordance with the methods and principles of the Statement of Recommended Practice for accounting and reporting by charities (applicable to charities preparing their accounts in accordance with the Financial Reporting Standard applicable in the UK and Republic of Ireland (FRS 102)).

I have no concerns and have come across no other matters in connection with the examination to which attention should be drawn in this report in order to enable a proper understanding of the accounts to be reached.

Tudor John

Tudor John Chartered Accountants
ICAEW
Tudor John Limited
Nightingale House
46-48 East Street
Epsom
Surrey
KT17 1HQ

Date: 7th June 2021

THE SPIRES CENTRE
Statement of Financial Activities
(Incorporating an Income and Expenditure Account)
for the year ended 30 September 2020

	Notes	Unrestricted funds £	Restricted funds £	2020 Total funds £	2019 Total funds £
INCOME AND ENDOWMENTS FROM					
Donations and legacies	2	189,565	124,461	314,026	195,974
Charitable activities	5				
Streetlink		-	-	-	1,747
Rough Sleepers Space		-	-	-	588
Rough Sleeper Service		-	82,250	82,250	119,608
Adult Learning Service		-	107,630	107,630	86,449
Tenancy Support		26,182	-	26,182	18,576
Other		760	-	760	-
Fundraiser		-	-	-	24,000
Community engagement		-	22,917	22,917	25,500
Women's Support Service		-	168,053	168,053	187,503
Other trading activities	3	633	587	1,220	899
Investment income	4	<u>350</u>	<u>-</u>	<u>350</u>	<u>394</u>
Total		217,490	505,898	723,388	661,238
EXPENDITURE ON					
Raising funds	6	23,581	2,506	26,087	25,051
Charitable activities	7				
Rough Sleeper Service		29,233	152,588	181,821	224,720
Adult Learning Service		1,270	137,842	139,112	97,374
Tenancy Support		44,090	7,923	52,013	54,608
Community engagement		13,117	26,949	40,066	53,499
Women's Support Service		24,473	190,878	215,351	229,007
Other		<u>-</u>	<u>-</u>	<u>-</u>	<u>539</u>
Total		<u>135,764</u>	<u>518,686</u>	<u>654,450</u>	<u>684,798</u>
NET INCOME/(EXPENDITURE)		81,726	(12,788)	68,938	(23,560)
RECONCILIATION OF FUNDS					
Total funds brought forward		<u>219,480</u>	<u>66,301</u>	<u>285,781</u>	<u>309,341</u>
TOTAL FUNDS CARRIED FORWARD		<u><u>301,206</u></u>	<u><u>53,513</u></u>	<u><u>354,719</u></u>	<u><u>285,781</u></u>

The notes form part of these financial statements

THE SPIRES CENTRE (REGISTERED NUMBER: 03785409)

**Balance Sheet
30 September 2020**

	Notes	Unrestricted funds £	Restricted funds £	2020 Total funds £	2019 Total funds £
FIXED ASSETS					
Tangible assets	13	27,306	3,513	30,819	39,219
CURRENT ASSETS					
Debtors	14	43,375	-	43,375	27,674
Cash at bank and in hand		<u>302,814</u>	<u>50,000</u>	<u>352,814</u>	<u>265,265</u>
		346,189	50,000	396,189	292,939
CREDITORS					
Amounts falling due within one year	15	(72,289)	-	(72,289)	(46,377)
NET CURRENT ASSETS		<u>273,900</u>	<u>50,000</u>	<u>323,900</u>	<u>246,562</u>
TOTAL ASSETS LESS CURRENT LIABILITIES		<u>301,206</u>	<u>53,513</u>	<u>354,719</u>	<u>285,781</u>
NET ASSETS		<u>301,206</u>	<u>53,513</u>	<u>354,719</u>	<u>285,781</u>
FUNDS	16				
Unrestricted funds				301,206	219,480
Restricted funds				<u>53,513</u>	<u>66,301</u>
TOTAL FUNDS				<u>354,719</u>	<u>285,781</u>

The charitable company is entitled to exemption from audit under Section 477 of the Companies Act 2006 for the year ended 30 September 2020.

The members have not required the company to obtain an audit of its financial statements for the year ended 30 September 2020 in accordance with Section 476 of the Companies Act 2006.

The trustees acknowledge their responsibilities for

- (a) ensuring that the charitable company keeps accounting records that comply with Sections 386 and 387 of the Companies Act 2006 and
- (b) preparing financial statements which give a true and fair view of the state of affairs of the charitable company as at the end of each financial year and of its surplus or deficit for each financial year in accordance with the requirements of Sections 394 and 395 and which otherwise comply with the requirements of the Companies Act 2006 relating to financial statements, so far as applicable to the charitable company.

The notes form part of these financial statements

THE SPIRES CENTRE (REGISTERED NUMBER: 03785409)
Balance Sheet - continued
30 September 2020

These financial statements have been prepared in accordance with the provisions applicable to charitable companies subject to the small companies regime.

The financial statements were approved by the Board of Trustees and authorised for issue on 26th May 2021 and were signed on its behalf by:



.....
Rossana Rocchini - Treasurer

The notes form part of these financial statements

THE SPIRES CENTRE
Cash Flow Statement
for the year ended 30 September 2020

	Notes	2020 £	2019 £
Cash flows from operating activities			
Cash generated from operations	1	90,878	(13,950)
Interest paid		<u>(869)</u>	<u>(1,367)</u>
Net cash provided by/(used in) operating activities		<u>90,009</u>	<u>(15,317)</u>
Cash flows from investing activities			
Purchase of tangible fixed assets		(2,610)	(18,465)
Sale of tangible fixed assets		-	3,397
Interest received		<u>150</u>	<u>274</u>
Net cash used in investing activities		<u>(2,460)</u>	<u>(14,794)</u>
		<hr/>	<hr/>
Change in cash and cash equivalents in the reporting period		87,549	(30,111)
Cash and cash equivalents at the beginning of the reporting period		<u>265,265</u>	<u>295,376</u>
Cash and cash equivalents at the end of the reporting period		<u><u>352,814</u></u>	<u><u>265,265</u></u>

The notes form part of these financial statements

THE SPIRES CENTRE
Notes to the Cash Flow Statement
for the year ended 30 September 2020

1. RECONCILIATION OF NET INCOME/(EXPENDITURE) TO NET CASH FLOW FROM OPERATING ACTIVITIES

	2020	2019
	£	£
Net income/(expenditure) for the reporting period (as per the Statement of Financial Activities)	68,938	(23,560)
Adjustments for:		
Depreciation charges	8,789	4,711
Loss on disposal of fixed assets	2,221	557
Interest received	(150)	(274)
Interest paid	869	1,367
(Increase)/decrease in debtors	(15,701)	32,665
Increase/(decrease) in creditors	<u>25,912</u>	<u>(29,416)</u>
Net cash provided by/(used in) operations	<u><u>90,878</u></u>	<u><u>(13,950)</u></u>

2. ANALYSIS OF CHANGES IN NET FUNDS

	At 1.10.19	Cash flow	At 30.9.20
	£	£	£
Net cash			
Cash at bank and in hand	<u>265,265</u>	<u>87,549</u>	<u>352,814</u>
	<u>265,265</u>	<u>87,549</u>	<u>352,814</u>
Total	<u><u>265,265</u></u>	<u><u>87,549</u></u>	<u><u>352,814</u></u>

The notes form part of these financial statements

THE SPIRES CENTRE
Notes to the Financial Statements
for the year ended 30 September 2020

1. ACCOUNTING POLICIES

BASIS OF PREPARING THE FINANCIAL STATEMENTS

The financial statements of the charitable company, which is a public benefit entity under FRS 102, have been prepared in accordance with the Charities SORP (FRS 102) 'Accounting and Reporting by Charities: Statement of Recommended Practice applicable to charities preparing their accounts in accordance with the Financial Reporting Standard applicable in the UK and Republic of Ireland (FRS 102) (effective 1 January 2019)', Financial Reporting Standard 102 'The Financial Reporting Standard applicable in the UK and Republic of Ireland' and the Companies Act 2006. The financial statements have been prepared under the historical cost convention.

INCOME

All income is recognised in the Statement of Financial Activities once the charity has entitlement to the funds, it is probable that the income will be received and the amount can be measured reliably.

EXPENDITURE

Liabilities are recognised as expenditure as soon as there is a legal or constructive obligation committing the charity to that expenditure, it is probable that a transfer of economic benefits will be required in settlement and the amount of the obligation can be measured reliably. Expenditure is accounted for on an accruals basis and has been classified under headings that aggregate all cost related to the category. Where costs cannot be directly attributed to particular headings they have been allocated to activities on a basis consistent with the use of resources.

TANGIBLE FIXED ASSETS

Depreciation is provided at the following annual rates in order to write off each asset over its estimated useful life.

Improvements to property	- 10% on cost
Fixtures and fittings	- 25% on reducing balance

Assets costing less than £500 are not capitalised but expense through the SoFA.

TAXATION

As a registered charity, the company is not liable to income tax on its various forms of income on the basis that it is applied for charitable purposes. Income tax is recoverable on gift and donations and is accounted for as it becomes receivable.

FUND ACCOUNTING

Unrestricted funds can be used in accordance with the charitable objectives at the discretion of the trustees.

Restricted funds can only be used for particular restricted purposes within the objects of the charity. Restrictions arise when specified by the donor or when funds are raised for particular restricted purposes.

Restricted incoming resources which relate to fixed assets expenditure are transferred to unrestricted funds following their utilisation to the extent that such expenditure relates to the furtherance of direct charitable (unrestricted) activities. Depreciation is thereafter accounted for as an expense within unrestricted funds.

Accumulated funds represent aggregate retained amounts, both restricted and unrestricted, which finance the company's operation. They comprise investment in fixed assets and working capital.

Further explanation of the nature and purpose of each fund is included in the notes to the financial statements.

HIRE PURCHASE AND LEASING COMMITMENTS

Rentals paid under operating leases are charged to the Statement of Financial Activities on a straight line basis over the period of the lease.

THE SPIRES CENTRE
Notes to the Financial Statements - continued
for the year ended 30 September 2020

1. ACCOUNTING POLICIES - continued

PENSION COSTS AND OTHER POST-RETIREMENT BENEFITS

The charitable company operates a defined contribution pension scheme. Contributions payable to the charitable company's pension scheme are charged to the Statement of Financial Activities in the period to which they relate.

2. DONATIONS AND LEGACIES

	2020	2019
	£	£
Donation	<u>314,026</u>	<u>195,974</u>

3. OTHER TRADING ACTIVITIES

	2020	2019
	£	£
Fundraising Events	<u>1,220</u>	<u>899</u>

4. INVESTMENT INCOME

	2020	2019
	£	£
Rents received	200	120
Deposit account interest	<u>150</u>	<u>274</u>
	<u>350</u>	<u>394</u>

5. INCOME FROM CHARITABLE ACTIVITIES

		2020	2019
	Activity	£	£
Donations	Streetlink	-	1,747
Donations	Rough Sleepers Space	-	588
Donations	Rough Sleeper Service	32,500	5,812
Grants	Rough Sleeper Service	49,750	113,796
Donations	Adult Learning Service	-	306
Grants	Adult Learning Service	107,630	86,143
Consultancy	Tenancy Support	26,182	18,576
Consultancy	Other	760	-
Grants	Fundraiser	-	24,000
Donations	Community engagement	-	500
Grants	Community engagement	22,917	25,000
Donations	Women's Support Service	150	-
Consultancy	Women's Support Service	-	1,400
Grants	Women's Support Service	<u>167,903</u>	<u>186,103</u>
		<u>407,792</u>	<u>463,971</u>

THE SPIRES CENTRE
Notes to the Financial Statements - continued
for the year ended 30 September 2020

5. INCOME FROM CHARITABLE ACTIVITIES - continued

Grants received, included in the above, are as follows:

	2020	2019
	£	£
Alexandra Trust	-	1,000
Big Lottery	-	162,134
Comic Relief	-	23,969
Garfield Weston	30,000	-
London Borough of Lambeth	-	86,143
Lloyds TSB	22,917	25,000
Streetsmart	-	3,333
Souter Charitable Trust	-	3,000
Thrale Almshouse and Relief	-	6,500
Drapers	-	15,000
Edith Murphy Foundation	-	3,000
Basektmakers Charity	-	7,083
London Borough of Lambeth	100,630	-
Stavros Niarchos Foundation	-	30,000
Mrs Smith & Mount Trust	-	5,000
LHA London	18,750	25,000
Streets of London	-	10,000
SIB Enterprise Development Grant	-	9,240
The White Benevolent Fund	-	5,000
The London Community	-	14,640
Robert Gavron	7,000	-
Housing for Women	3,000	-
Coopers Charity	1,000	-
	<u>183,297</u>	<u>435,042</u>

6. RAISING FUNDS

RAISING DONATIONS AND LEGACIES

	2020	2019
	£	£
Staff costs	22,350	22,636
Fundraising	<u>3,737</u>	<u>2,415</u>
	<u>26,087</u>	<u>25,051</u>

THE SPIRES CENTRE
Notes to the Financial Statements - continued
for the year ended 30 September 2020

7. CHARITABLE ACTIVITIES COSTS

	Direct Costs £	Support costs (see note 8) £	Totals £
Rough Sleeper Service	113,968	67,853	181,821
Adult Learning Service	87,311	51,801	139,112
Tenancy Support	28,234	23,779	52,013
Community engagement	22,159	17,907	40,066
Women's Support Service	<u>116,837</u>	<u>98,514</u>	<u>215,351</u>
	<u>368,509</u>	<u>259,854</u>	<u>628,363</u>

8. SUPPORT COSTS

	Management £	Human resources £	Other £	Governance costs £	Totals £
Rough Sleeper Service	27,515	19,405	13,325	7,608	67,853
Adult Learning Service	17,933	16,301	11,194	6,373	51,801
Tenancy Support	7,655	7,761	5,329	3,034	23,779
Community engagement	5,812	5,822	3,997	2,276	17,907
Women's Support Service	<u>35,353</u>	<u>30,401</u>	<u>20,875</u>	<u>11,885</u>	<u>98,514</u>
	<u>94,268</u>	<u>79,690</u>	<u>54,720</u>	<u>31,176</u>	<u>259,854</u>

9. NET INCOME/(EXPENDITURE)

Net income/(expenditure) is stated after charging/(crediting):

	2020 £	2019 £
Depreciation - owned assets	8,790	4,711
Other operating leases	25,928	25,695
Deficit on disposal of fixed assets	<u>2,221</u>	<u>557</u>

10. TRUSTEES' REMUNERATION AND BENEFITS

There were no trustees' remuneration or other benefits for the year ended 30 September 2020 nor for the year ended 30 September 2019.

TRUSTEES' EXPENSES

There were no trustees' expenses paid for the year ended 30 September 2020 nor for the year ended 30 September 2019.

THE SPIRES CENTRE
Notes to the Financial Statements - continued
for the year ended 30 September 2020

11. STAFF COSTS

	2020	2019
	£	£
Wages and salaries	340,442	376,554
Social security costs	28,577	29,837
Other pension costs	<u>16,956</u>	<u>18,100</u>
	<u><u>385,975</u></u>	<u><u>424,491</u></u>

No member of staff received remuneration in excess of £60,000.

12. COMPARATIVES FOR THE STATEMENT OF FINANCIAL ACTIVITIES

	Unrestricted funds £	Restricted funds £	Total funds £
INCOME AND ENDOWMENTS FROM			
Donations and legacies	188,009	7,965	195,974
Charitable activities			
Streetlink	1,747	-	1,747
Rough Sleepers Space	588	-	588
Rough Sleeper Service	5,812	113,796	119,608
Adult Learning Service	306	86,143	86,449
Tenancy Support	18,576	-	18,576
Fundraiser	15,000	9,000	24,000
Community engagement	500	25,000	25,500
Women's Support Service	1,400	186,103	187,503
Other trading activities	899	-	899
Investment income	<u>394</u>	<u>-</u>	<u>394</u>
Total	233,231	428,007	661,238
EXPENDITURE ON			
Raising funds	16,051	9,000	25,051
Charitable activities			
Rough Sleeper Service	114,101	110,619	224,720
Adult Learning Service	7,190	90,184	97,374
Tenancy Support	53,865	743	54,608
Community engagement	27,256	26,243	53,499
Women's Support Service	38,557	190,450	229,007
Other	<u>539</u>	<u>-</u>	<u>539</u>
Total	<u>257,559</u>	<u>427,239</u>	<u>684,798</u>
NET INCOME/(EXPENDITURE)	(24,328)	768	(23,560)

THE SPIRES CENTRE
Notes to the Financial Statements - continued
for the year ended 30 September 2020

12. COMPARATIVES FOR THE STATEMENT OF FINANCIAL ACTIVITIES - continued

	Unrestricted funds £	Restricted funds £	Total funds £
RECONCILIATION OF FUNDS			
Total funds brought forward	243,808	65,533	309,341
TOTAL FUNDS CARRIED FORWARD	<u>219,480</u>	<u>66,301</u>	<u>285,781</u>

13. TANGIBLE FIXED ASSETS

	Improvements to property £	Fixtures and fittings £	Totals £
COST			
At 1 October 2019	43,487	72,665	116,152
Additions	2,610	-	2,610
Disposals	<u>-</u>	<u>(21,527)</u>	<u>(21,527)</u>
At 30 September 2020	<u>46,097</u>	<u>51,138</u>	<u>97,235</u>
DEPRECIATION			
At 1 October 2019	28,863	48,069	76,932
Charge for year	3,085	5,705	8,790
Eliminated on disposal	<u>-</u>	<u>(19,306)</u>	<u>(19,306)</u>
At 30 September 2020	<u>31,948</u>	<u>34,468</u>	<u>66,416</u>
NET BOOK VALUE			
At 30 September 2020	<u>14,149</u>	<u>16,670</u>	<u>30,819</u>
At 30 September 2019	<u>14,624</u>	<u>24,596</u>	<u>39,220</u>

THE SPIRES CENTRE
Notes to the Financial Statements - continued
for the year ended 30 September 2020

14. DEBTORS: AMOUNTS FALLING DUE WITHIN ONE YEAR

	2020	2019
	£	£
Trade debtors	15,643	1,996
Other debtors	7,020	11,401
Prepayments	<u>20,712</u>	<u>14,277</u>
	<u>43,375</u>	<u>27,674</u>

15. CREDITORS: AMOUNTS FALLING DUE WITHIN ONE YEAR

	2020	2019
	£	£
Trade creditors	19,926	20,554
Social security and other taxes	7,178	8,431
Accruals and Deferred Income	37,468	5,646
Accrued expenses	<u>7,717</u>	<u>11,746</u>
	<u>72,289</u>	<u>46,377</u>

16. MOVEMENT IN FUNDS

	At 1.10.19 £	Net movement in funds £	At 30.9.20 £
Unrestricted funds			
General fund	64,540	81,726	146,266
Special Projects fund	<u>154,940</u>	<u>-</u>	<u>154,940</u>
	219,480	81,726	301,206
Restricted funds			
Direct Charitable Activities	4,696	(1,183)	3,513
Emergency Support Fund	50,000	-	50,000
LHA London	6,250	(6,250)	-
Wimbledon Foundation Homeless Fund	<u>5,355</u>	<u>(5,355)</u>	<u>-</u>
	<u>66,301</u>	<u>(12,788)</u>	<u>53,513</u>
TOTAL FUNDS	<u>285,781</u>	<u>68,938</u>	<u>354,719</u>

THE SPIRES CENTRE
Notes to the Financial Statements - continued
for the year ended 30 September 2020

16. MOVEMENT IN FUNDS - continued

Net movement in funds, included in the above are as follows:

	Incoming resources £	Resources expended £	Movement in funds £
Unrestricted funds			
General fund	217,490	(135,764)	81,726
Restricted funds			
Rough Sleepers Space	70,097	(70,097)	-
Direct Charitable Activities	-	(1,183)	(1,183)
Big Lottery Reaching Communities	164,903	(164,903)	-
Lloyds Bank Foundation for England and Wales	22,917	(22,917)	-
London Borough of Lambeth	109,455	(109,455)	-
The Worshipful Company of Basket Makers	5,000	(5,000)	-
LHA London	18,750	(25,000)	(6,250)
Adult Learning Service	7,000	(7,000)	-
Wimbledon Foundation Homeless Fund	29,067	(34,422)	(5,355)
Women's support service	3,150	(3,150)	-
Tenancy Support	2,683	(2,683)	-
Covid-19 Emergency funding	<u>72,876</u>	<u>(72,876)</u>	<u>-</u>
	<u>505,898</u>	<u>(518,686)</u>	<u>(12,788)</u>
TOTAL FUNDS	<u>723,388</u>	<u>(654,450)</u>	<u>68,938</u>

Comparatives for movement in funds

	At 1.10.18 £	Net movement in funds £	Transfers between funds £	At 30.9.19 £
Unrestricted funds				
General fund	243,808	(24,328)	(154,940)	64,540
Special Projects fund	<u>-</u>	<u>-</u>	<u>154,940</u>	<u>154,940</u>
	243,808	(24,328)	-	219,480
Restricted funds				
Direct Charitable Activities	12,541	(7,845)	-	4,696
Emergency Support Fund	50,000	-	-	50,000
London Borough of Lambeth	2,992	(2,992)	-	-
LHA London	-	6,250	-	6,250
Wimbledon Foundation Homeless Fund	<u>-</u>	<u>5,355</u>	<u>-</u>	<u>5,355</u>
	<u>65,533</u>	<u>768</u>	<u>-</u>	<u>66,301</u>
TOTAL FUNDS	<u>309,341</u>	<u>(23,560)</u>	<u>-</u>	<u>285,781</u>

THE SPIRES CENTRE
Notes to the Financial Statements - continued
for the year ended 30 September 2020

16. MOVEMENT IN FUNDS - continued

Comparative net movement in funds, included in the above are as follows:

	Incoming resources £	Resources expended £	Movement in funds £
Unrestricted funds			
General fund	233,231	(257,559)	(24,328)
Restricted funds			
Rough Sleepers Space	63,245	(63,245)	-
Direct Charitable Activities	-	(7,845)	(7,845)
Big Lottery Reaching Communities	162,134	(162,134)	-
Comic Relief	23,969	(23,969)	-
Lloyds Bank Foundation for England and Wales	25,000	(25,000)	-
London Borough of Lambeth	86,143	(89,135)	(2,992)
Mrs Smith & Mount Trust	5,000	(5,000)	-
The Worshipful Company of Basket Makers	7,083	(7,083)	-
LHA London	25,000	(18,750)	6,250
Thrle	4,000	(4,000)	-
Community Engagement	500	(500)	-
Adult Learning Service	306	(306)	-
Housing for Women	147	(147)	-
Men who buy sex	1,600	(1,600)	-
Enterprise development project	9,240	(9,240)	-
Wimbledon Foundation Homeless Fund	14,640	(9,285)	5,355
	<u>428,007</u>	<u>(427,239)</u>	<u>768</u>
TOTAL FUNDS	<u>661,238</u>	<u>(684,798)</u>	<u>(23,560)</u>

Direct Fund - this fund represents funding received directly in respect of performing the Charitable activities. The value at the end of the year represents the net book value of assets specifically funded for use in these Charitable activities.

Fundraiser - this is money received towards the cost of employing a fundraiser to help generate funds and enable the Charity to improve its financial position.

Emergency Support Fund - this money has been given to the Charity to cover any expenses which may arise in the event that the Charity was forced to close. It is not available for use as day to day funding of the activities.

Special Projects Fund - this money has been provided to support the aims and objects of Spires, money can be withdrawn from the fund only after all trustees have been consulted and a majority have indicated agreement to the expenditure. Trustees have agreed that as far as possible the money should be used for special projects or in exceptional circumstances to support a shortfall in the annual revenue of Spires. In order to preserve the special projects nature of the fund any revenue payments required should be kept to a minimum and in any case must not exceed £50,000 in any one year and only be made available in the most serious of circumstances.

THE SPIRES CENTRE
Notes to the Financial Statements - continued
for the year ended 30 September 2020

17. RELATED PARTY DISCLOSURES

There were no related party transactions requiring disclosure during the year.

18. DEFERRED INCOME

Incoming resources deferred and accrued at 30th September 2020 are made up of the following:

	2020	2019
Accrued income b/fwd at 1st October 2019	-	(7,617)
Deferred income b/fwd at 1st October 2019	-	37,917
Received in the year	440,302	424,718
Accrued income c/fwd at 30th September 2020	-	-
Deferred income c/fwd at 30th September 2020	<u>(32,510)</u>	<u>-</u>
Released in the year	<u>407,792</u>	<u>455,018</u>