

Northern Academy of Performing Arts Educational Trust

Unaudited Financial Statements

31st August 2024



SD-0218733-1-6

**Contents of the Financial Statements
for the year ended 31st August 2024**

	Page
Reference and Administrative Details	1
Chairman's Report	2 to 8
Impact Report	9
Report of the Trustees	10 to 11
Independent Examiner's Report	12
Statement of Financial Activities	13
Balance Sheet	14
Cash Flow Statement	15
Notes to the Cash Flow Statement	16
Notes to the Financial Statements	17 to 26

Northern Academy of Performing Arts Educational Trust

Reference and Administrative Details for the year ended 31st August 2024

TRUSTEES	N Bedworth (Vice Chair) (resigned 1.8.2024) H Duckworth (resigned 11.11.2023) C Gruca (Chair) K Butler J M Blenkarn (Chair) (resigned 31.3.2025) S P Kind G Farrington L Pearson (appointed 1.9.2024) C Ballingham (appointed 1.9.2024) H Dunn (appointed 1.9.2024)
PRINCIPAL ADDRESS	50 Anlaby Road Hull East Yorkshire HU1 2PD
REGISTERED CHARITY NUMBER	1076867
INDEPENDENT EXAMINER	Smailes Goldie Chartered Accountants Regent's Court Princess Street Hull East Yorkshire HU2 8BA
BANKERS	Barclays Bank PLC Hull Corporate Banking Centre Hull East Yorkshire HU1 1RN
CHIEF EXECUTIVE OFFICER	Carl Wheatley

Northern Academy of Performing Arts Educational Trust

Chairman's Report for the year ended 31st August 2024

Northern Academy of Performing Arts Educational Trust Chair's Report for the year ended 31st August 2024

The Trust's achievements for the year are summarised by our Chief Executive, Carl Wheatley, as follows:

Introduction

NAPA is a pioneering performing arts charity for adults and children, offering over 100 classes across any week in dance, acting and musical theatre. We run a full-time Level 3 Performing and Production Arts course in partnership with Wilberforce College, Hull and UAL (University of the Arts, London). We also run a highly successful School Outreach Programme, working with 18 local primary schools on children's performing arts skills.



Our home

Many of our students go on to professional training in dance, acting and musical theatre at the top schools in the UK but our main aim is to inspire self-confidence, communication skills and self-worth in the 700 students who attend our classes every week.

This year students were successful in gaining places at Arts Educational, Royal Central School of Speech and Drama, Mountview Academy of Theatre Arts, Royal Scottish Conservatoire, Arden University and LAMDA.

September- December 2023

We've started the new academic year on a high. 550 enrolments in week one which is slightly up on last year (514). We reopened the free taster bookings and had a flurry of people wanting to try classes. Despite our best efforts, we had to increase class prices by 50p on most classes to cover our increasing running costs.

In September we held auditions for our major musical theatre production Calamity Jane, to be staged at Hull Truck Theatre in July 2024. Over 60 young people auditioned to be in the show.

We also received our LAMDA acting exam results with every student receiving high merit passes or distinctions and our students entered into LCM singing exams all passed with a distinction.

We held auditions for in-house productions Frozen Jr. the musical, Edward Scissorhands the play, and began rehearsals for our staff panto.

**Chairman's Report
for the year ended 31st August 2024**



Ailey II Dance Company

New York based Dance Company Ailey II came to NAPA to hold a workshop with our intermediate/senior dancers. The students were given free tickets to watch their performance at Hull New Theatre the night before and were then taught some of the routines here at NAPA. The students absolutely loved the experience and the opportunity to work with such an inspirational international company.



Mono Box Play Library at NAPA

Through a partnership with the charity Monobox, we took delivery of over 1000 play texts and acting technique books and created a new library for our students to use when preparing for performance and auditions.

Blayne George, Executive Creative Director of Mono Box said: "The Mono Box library was developed as a way of supporting emerging theatre artists at important times in their creative development. We are comforted in knowing that these important and rich cultural assets will be rehomed with a pioneering organisation like NAPA. It is a joy to know that The Mono Box will live on through them and that these resources will continue to be accessible and a source of inspiration for those seeking to have their voices heard, explore their creativity, hone their craft and develop exciting, challenging and bold new work."

Northern Academy of Performing Arts Educational Trust

Chairman's Report for the year ended 31st August 2024

Our VIPs and Over 55's actors staged their Double Bill at the beginning of October. This was very well received and ticket sales were good. These groups not only teach valuable skills but also combat loneliness and are a real support to participants.

NAPA students performed on 6th October at the Humber Local Family Justice Board conference at the Hilton in Hull - the theme for the event was "Shaping Minds to Shape the Future".

The fourth year of the full-time course (Level 3 in Performing and Production Arts) started with 15 new students enrolling - bringing our total number of full-time students to 27.

We had the inaugural meeting of the FANS: Friends of NAPA, a new group of parents and friends who will fundraise for our Big Build Campaign to restore our beloved Grade II* listed home. Their first year was very successful, raising almost £10,000 for our funds via raffles, quiz nights and other donations. The FANS also organised a special performance of a group of dancing dads. The Dance Dads raised almost £4000 for the funds. This group of dedicated fundraisers has brought parents and friends together to support NAPA.



Dance Dads Rehearsal

We saw a drop in the number of schools who've signed up for the Outreach programme, all due to school budget constraints. 18 schools signed up for the coming year. This is a reduction from 22 schools last year.



Our Pedal for Paul Fundraiser

Northern Academy of Performing Arts Educational Trust

Chairman's Report for the year ended 31st August 2024

We raised funds for our Paul Frankish Fund (supporting students with the cost of auditions and travel) with a 12-hour charity exercise bike ride at NAPA. Our Pedal for Paul fundraiser was a huge success. Over 60 riders cycled for 15 minutes each the equivalent distance from NAPA to the West End. We raised over £2k for the fund.

Following competitive interviews in December we selected Tamsyn Howes to be our new professional fundraiser. Tamsyn is former Head of Fundraising for the National Trust and is very well qualified to work with us on our major capital project. She is also a qualified teacher and was passionate about NAPA's aims in her interview. Tamsyn will start in January 2024.

January - March 2024

We had the inaugural meeting of the NAPA Young People's Board. The new group has 9 students taking part of varying ages, helping to shape the future of NAPA and to bring much needed young voices into our decision making. Luna (17), Betty (11), Darcey (11), Neve (13), Millie (13), Mia (15), Jasmine (19), James (9) and Ella (10) are a valuable asset to NAPA and thrilled to be on the new board.



Northern Cultural Education Awards Finalists

We were thrilled to be shortlisted in the Northern Cultural Education Awards, in the category of Young Arts Activism for our ground-breaking boys' dance programme Emergence.

Through our connection with Hull New Theatre, we were offered the chance to work with Sao Paulo Dance Company from Brazil. 20 of our intermediate age dancers (13+) were given free tickets to see the company perform at Hull New Theatre and the company then came to NAPA to hold a workshop with the students on Saturday 2nd March. This was an incredible experience for our young dancers.

Our full-time students were given the chance to sit in on tech rehearsals for Middle Child Theatre's latest production He Loves You, Baby. They all then received free tickets to see the show and thoroughly enjoyed the experience.

We did exceptionally well with the ISTD dance exams. Over 7 full days of exams there were 166 individual exams with 125 distinctions and 41 merits.

Northern Academy of Performing Arts Educational Trust

Chairman's Report for the year ended 31st August 2024

April - June 2024

Building 120th Celebration Weekend

We had an incredible weekend of celebrations for our building's 120th year. We welcomed 40 guests, many former art students and VIPs to the building for an open event. Some of our current senior dance and musical theatre students performed for them and architectural historian Tim Brittain-Catlin spoke about the significance of our heritage building. We then had some food and let the former students wander around the building taking photos. The main take-away from the event for me was the love for our building from anyone who has ever had a connection with it - even those who haven't been inside it for over 50 years. So many memories were shared at the event.



The keynote speaker for the event was Tim Brittain-Catlin, Course Leader for Architecture at University of Cambridge. Dr Brittain-Catlin emphasised the importance of our "nationally significant" building and described it as "a jewel in the crown for the city".

We teamed up with Hull City Council who offer wellbeing grants to young carers. These youngsters, who have caring responsibilities at home, can now use these grants to pay for their NAPA class fees. We do have a handful of young carers who attend and this was a real benefit to them and their wellbeing.

We opened our doors to the public as part of the national Heritage Open Days programme, showing large groups of people around our heritage building on tours, and answering questions from the participants.

July - August 2024



Calamity Jane at Hull Truck Theatre

Northern Academy of Performing Arts Educational Trust

Chairman's Report for the year ended 31st August 2024

Our major production of Calamity Jane at Hull Truck Theatre made a profit of £2386.59 with 63% ticket sales. Audiences loved it - and we received lots of praise, including this from Cllr Rob Pritchard, the Portfolio Holder for Culture in the city:

"Congratulations on your incredible production of Calamity Jane at Hull Truck. My wife and I really enjoyed it, so much we came back with friends the next day. Hope you were pleased with how it went; it was a great performance."

Our three weeks of Summer School were as popular as ever with over 300 young people taking part in acting, dance and musical theatre weeks.

Public performances this year

October 2023 - Double Vision - our VIPs Visually Impaired Performers
October 2023 - The Chameleon Players - Three One Act Plays
November 2023 - James and the Giant Peach
December 2023 - Memoirs of the Past
December 2023 - A Christmas Cracker
December 2023 - Robin Hood and the Babes in the Wood
January 2024 - Frozen Jr.
February 2024 - Edward Scissorhands
February 2024 - Green Ginger Productions - Rita, Sue and Bob Too
February 2024 - The Jungle Book
February 2024 - Aristocats
March 2024 - Tales from the Toy Box
March 2024 - An Evening of Devised Pieces
March 2024 - Act 24 Productions - The Enfield Poltergeist
March 2024 - Big Fish the musical
April 2024 - Legally Blonde the musical
April 2024 - The Wizard of Oz
May 2024 - Made in Dagenham
May 2024 - The Chameleon Players - Hound of the Baskervilles
May 2024 - This is Our Story
June 2024 - Honk! The musical
July 2024 - Northern Stars dance show - Middleton Hall, Hull
July 2024 - Dance Summer School performance
July 2024 - Calamity Jane at Hull Truck Theatre
August 2024 - The Little Mermaid musical

Our building

Our building Despite the many successes of the year, our main concern remains our building. We are housed in Hull's former Art School, built in 1904. It's an incredible building, Grade II* listed, perfect for performing arts, with our own well equipped 125 seat theatre and large, airy studios which are bathed in natural light.



NAPA's home in the centre of Hull

Northern Academy of Performing Arts Educational Trust

Chairman's Report for the year ended 31st August 2024

Sadly, the building is in dire need of repair and this has got worse over the past year. We need major roof repairs as some rooms leak when it rains making them unusable, windows need replacing as they let in freezing cold air in winter, there are also extensive repairs to the exterior stonework and interior plaster work needed. We also need interior decoration and improvement of bathroom facilities for students and visitors.

We also have plans to remodel our theatre to enable more community use and would like to create areas to improve staff welfare. We have created a Capital Project Funding Strategy and have been working with Historic England on planning a full restoration of our building.

Please see Impact Report on next page

Carl Wheatley
NAPA CEO
March 2025



2023 - 2024
Northern Academy of Performing Arts
01482 310690
www.northernacademy.org.uk

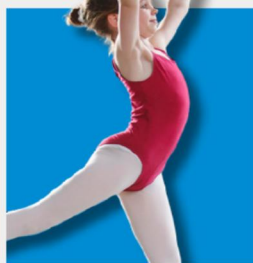
9297
CONNECTIONS
ON OUR
SOCIAL MEDIA

8163
SEARCHES
ON GOOGLE



619
STUDENTS

Experiencing the life changing
power of performing arts



WORKING WITH
22 SCHOOLS

As part of NAPA's innovative
School Outreach Programme

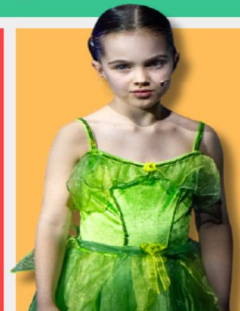


3900
INDIVIDUAL
CLASSES

82
SCHOLARSHIP
PLACES AWARDED

To remove financial barriers to participation
in our performing arts classes

8750
AUDIENCE
MEMBERS



£2900
DONATED TO
OUR PAUL
FRANKISH
FUND

To support
young people
with the cost of
auditions

22,000
VISITS TO
THE NAPA
WEBSITE

72
INDIVIDUAL LIVE
PERFORMANCES

in our very own theatre

Northern Academy of Performing Arts Educational Trust

Report of the Trustees for the year ended 31st August 2024

The trustees present their report with the financial statements of the charity for the year ended 31st August 2024. The trustees have adopted the provisions of Accounting and Reporting by Charities: Statement of Recommended Practice applicable to charities preparing their accounts in accordance with the Financial Reporting Standard applicable in the UK and Republic of Ireland (FRS 102) (effective 1 January 2019).

OBJECTIVES AND ACTIVITIES

Objectives and aims

The objectives of the charity are to foster, encourage and provide opportunities for people of all ages to participate, increase their confidence and enjoy being involved in creative performing arts activities.

Public benefit

In setting objectives and planning activities the trustees have given due consideration to general guidance published by the Charity Commission relating to public benefit.

Grantmaking

Grants are payable to individuals for help with audition costs from money collected through the Frankish Fund.

FINANCIAL REVIEW

Financial position

The annual accounts show a deficit of £80,969 (2023 deficit of £52,259) with a total cumulative surplus of £536,750 (2023 £617,719) available to carry forward.

At 31st August 2024 total funds carried forward are split £533,738 unrestricted (2023 £616,253) for general use and £3,012 restricted (2023 £1,466) for distribution under the Frankish Fund.

Investment policy and objectives

The charity has the power to make any investment that the trustees see fit.

Reserves policy

The trustees consider that a level of reserves required in order for the charity to operate at its current level of activity has now been attained.

The trustees continue to review the administrative controls and systems to ensure that all sources of income are enhanced sufficiently to enable the future development of the Academy.

FUTURE PLANS

We will continue to pursue our plans to increase our collaborative working, take our productions out of NAPA more and to offer more places for children who could not otherwise attend due to financial constraints, through our bursary scheme. These plans would not be possible without the strong foundations built up over a number of years by our talented and dedicated team of staff and volunteers, to whom we owe a huge debt of thanks.

STRUCTURE, GOVERNANCE AND MANAGEMENT

Governing document

The charity is controlled by its governing document, a deed of trust and constitutes an unincorporated charity.

The trust is constituted by Deed of Trust dated 12 May 1998 as amended by special resolutions dated 25 July 1999 and 29 June 2006. It is registered as a charity with the Charity Commission.

Recruitment and appointment of new trustees

Trustees are elected for a period of 3 years on a rolling basis. Trustees are nominated to serve on the board by recommendation of currently serving trustees. If the board agrees to the nomination, the candidate is invited to serve on the board.

**Report of the Trustees
for the year ended 31st August 2024**

STRUCTURE, GOVERNANCE AND MANAGEMENT

Organisational structure

The charity has a board of trustees that meets regularly and is responsible for the strategic direction and policy of the trust's work.

The trust employs several workers to whom the trustees delegate the day to day responsibility for the provision of services, including artistic development, production, teaching and administration. Regular staff meetings occur throughout the year.

Induction and training of new trustees

There is no formal training provided by the charity as most trustees are already familiar with the practical work of the trust. The role is formally discussed with an existing serving trustee, for new trustees to familiarise themselves.

Related parties

The trust does not have any close relationships with any other group or party operating entirely on its own. All classes and performances are advertised locally within schools and other council premises.

Risk management

The trustees have a duty to identify and review the risks to which the charity is exposed and to ensure appropriate controls are in place to provide reasonable assurance against fraud and error.

The trustees have a risk management strategy that comprises:

- An annual review of the risks the trust may face;
- The establishment of systems and procedures to mitigate those risks identified in the plan;
- The implementation of procedures designed to minimise any potential impact on the charity should those risks materialise.

This work has identified only a few minor new risks, but it has resulted in better emergency procedures and contingency plans and has given the impetus for better planning. Particular attention has focused on non-financial risks arising from fire, health and safety and management of performing rights. A key element in the management of financial risk is the detailed controls and systems that prevail within the trust.

Approved by order of the board of trustees on 27th May 2025 and signed on its behalf by:



.....
C Gruca - Trustee

**Independent Examiner's Report to the Trustees of
Northern Academy of Performing Arts Educational Trust**

Independent examiner's report to the trustees of Northern Academy of Performing Arts Educational Trust

I report to the charity trustees on my examination of the accounts of Northern Academy of Performing Arts Educational Trust (the Trust) for the year ended 31st August 2024.

Responsibilities and basis of report

As the charity trustees of the Trust you are responsible for the preparation of the accounts in accordance with the requirements of the Charities Act 2011 ('the Act').

I report in respect of my examination of the Trust's accounts carried out under Section 145 of the Act and in carrying out my examination I have followed all applicable Directions given by the Charity Commission under Section 145(5)(b) of the Act.

Independent examiner's statement

Since your charity's gross income exceeded £250,000 your examiner must be a member of a listed body. I can confirm that I am qualified to undertake the examination because I am a member of the Institute of Chartered Accountants in England and Wales, which is one of the listed bodies.

I have completed my examination. I confirm that no material matters have come to my attention in connection with the examination giving me cause to believe that in any material respect:

1. accounting records were not kept in respect of the Trust as required by Section 130 of the Act; or
2. the accounts do not accord with those records; or
3. the accounts do not comply with the applicable requirements concerning the form and content of accounts set out in the Charities (Accounts and Reports) Regulations 2008 other than any requirement that the accounts give a true and fair view which is not a matter considered as part of an independent examination.

I have no concerns and have come across no other matters in connection with the examination to which attention should be drawn in this report in order to enable a proper understanding of the accounts to be reached.



Luke Damien Taylor Bsc (Hons) ACA
The Institute of Chartered Accountants in England and Wales

Smailes Goldie
Chartered Accountants
Regent's Court
Princess Street
Hull
East Yorkshire
HU2 8BA

Date: 27th May 2025

Northern Academy of Performing Arts Educational Trust

Statement of Financial Activities for the year ended 31st August 2024

	Notes	Unrestricted fund £	Restricted fund £	2024 Total funds £	2023 Total funds £
INCOME AND ENDOWMENTS FROM					
Donations and legacies	2	7,466	2,875	10,341	5,203
Charitable activities	5				
Performing arts activities		453,969	-	453,969	405,353
Musical theatre tuition		135,323	-	135,323	148,095
Other trading activities	3	50,000	3,081	53,081	46,657
Investment income	4	6,537	-	6,537	2,151
Total		<u>653,295</u>	<u>5,956</u>	<u>659,251</u>	<u>607,459</u>
EXPENDITURE ON					
Raising funds	6	36,596	-	36,596	37,504
Charitable activities	7				
Performing arts activities		698,860	-	698,860	236,212
Direct charitable activities		-	-	-	384,886
Grants paid for audition costs		-	1,535	1,535	1,116
Total		<u>735,456</u>	<u>1,535</u>	<u>736,991</u>	<u>659,718</u>
NET INCOME/(EXPENDITURE)		(82,161)	4,421	(77,740)	(52,259)
RECONCILIATION OF FUNDS					
Total funds brought forward		616,253	1,466	617,719	669,978
TOTAL FUNDS CARRIED FORWARD		<u><u>534,092</u></u>	<u><u>5,887</u></u>	<u><u>539,979</u></u>	<u><u>617,719</u></u>

The notes form part of these financial statements

Northern Academy of Performing Arts Educational Trust

Balance Sheet 31st August 2024

	Notes	Unrestricted fund £	Restricted fund £	2024 Total funds £	2023 Total funds £
FIXED ASSETS					
Tangible assets	14	144,583	-	144,583	146,273
CURRENT ASSETS					
Debtors	15	43,555	-	43,555	66,242
Cash at bank		<u>496,769</u>	<u>5,887</u>	<u>502,656</u>	<u>600,565</u>
		540,324	5,887	546,211	666,807
CREDITORS					
Amounts falling due within one year	16	<u>(40,977)</u>	-	<u>(40,977)</u>	<u>(74,655)</u>
NET CURRENT ASSETS		<u>499,347</u>	<u>5,887</u>	<u>505,234</u>	<u>592,152</u>
TOTAL ASSETS LESS CURRENT LIABILITIES		643,930	5,887	649,817	738,425
CREDITORS					
Amounts falling due after more than one year	17	<u>(109,838)</u>	-	<u>(109,838)</u>	<u>(120,706)</u>
NET ASSETS		<u>534,092</u>	<u>5,887</u>	<u>539,979</u>	<u>617,719</u>
FUNDS	19				
Unrestricted funds:					
General fund				534,092	616,253
Restricted funds:					
Frankish Fund				<u>5,887</u>	<u>1,466</u>
TOTAL FUNDS				<u>539,979</u>	<u>617,719</u>

The financial statements were approved by the Board of Trustees and authorised for issue on 27th May 2025 and were signed on its behalf by:



.....
C Gruca - Trustee

Northern Academy of Performing Arts Educational Trust

**Cash Flow Statement
for the year ended 31st August 2024**

	Notes	2024 £	2023 £
Cash flows from operating activities			
Cash generated from operations	1	(77,393)	(45,421)
Interest paid		<u>(10,886)</u>	<u>(8,906)</u>
Net cash used in operating activities		<u>(88,279)</u>	<u>(54,327)</u>
Cash flows from investing activities			
Purchase of tangible fixed assets		(3,790)	(1,989)
Interest received		<u>6,537</u>	<u>2,151</u>
Net cash provided by investing activities		<u>2,747</u>	<u>162</u>
Cash flows from financing activities			
Loan repayments in year		<u>(12,377)</u>	<u>(11,478)</u>
Net cash used in financing activities		<u>(12,377)</u>	<u>(11,478)</u>
		<hr/>	<hr/>
Change in cash and cash equivalents in the reporting period		(97,909)	(65,643)
Cash and cash equivalents at the beginning of the reporting period		<u>600,565</u>	<u>666,208</u>
Cash and cash equivalents at the end of the reporting period		<u><u>502,656</u></u>	<u><u>600,565</u></u>

The notes form part of these financial statements

**Notes to the Cash Flow Statement
for the year ended 31st August 2024**

1. RECONCILIATION OF NET EXPENDITURE TO NET CASH FLOW FROM OPERATING ACTIVITIES

	2024 £	2023 £
Net expenditure for the reporting period (as per the Statement of Financial Activities)	(77,740)	(52,259)
Adjustments for:		
Depreciation charges	5,479	10,918
Interest received	(6,537)	(2,151)
Interest paid	10,886	8,906
Decrease/(increase) in debtors	22,687	(40,525)
(Decrease)/increase in creditors	<u>(32,168)</u>	<u>29,690</u>
Net cash used in operations	<u>(77,393)</u>	<u>(45,421)</u>

2. ANALYSIS OF CHANGES IN NET FUNDS

	At 1.9.23 £	Cash flow £	At 31.8.24 £
Net cash			
Cash at bank	<u>600,565</u>	<u>(97,909)</u>	<u>502,656</u>
	<u>600,565</u>	<u>(97,909)</u>	<u>502,656</u>
Debt			
Debts falling due within 1 year	(14,600)	1,510	(13,090)
Debts falling due after 1 year	<u>(120,706)</u>	<u>10,868</u>	<u>(109,838)</u>
	<u>(135,306)</u>	<u>12,378</u>	<u>(122,928)</u>
Total	<u>465,259</u>	<u>(85,531)</u>	<u>379,728</u>

**Notes to the Financial Statements
for the year ended 31st August 2024**

1. ACCOUNTING POLICIES

Basis of preparing the financial statements

The financial statements of the charity, which is a public benefit entity under FRS 102, have been prepared in accordance with the Charities SORP (FRS 102) 'Accounting and Reporting by Charities: Statement of Recommended Practice applicable to charities preparing their accounts in accordance with the Financial Reporting Standard applicable in the UK and Republic of Ireland (FRS 102) (effective 1 January 2019)', Financial Reporting Standard 102 'The Financial Reporting Standard applicable in the UK and Republic of Ireland' and the Charities Act 2011. The financial statements have been prepared under the historical cost convention.

Income

All income is recognised in the Statement of Financial Activities once the charity has entitlement to the funds, it is probable that the income will be received and the amount can be measured reliably.

Income from donations and grants is included in incoming resources when these are receivable, except as follows:

When donors specify that donations and grants given to the charity must be used in future accounting periods, income is deferred until these periods. When donors impose conditions which have to be fulfilled before the charity becomes entitled to use such income, the income is deferred and not included in incoming resources until the pre-conditions for the use have been met.

When donors specify that donations and grants are for particular restricted purposes, which do not amount to pre-conditions regarding entitlement, this income is included in incoming resources of restricted funds when receivable.

Expenditure

Liabilities are recognised as expenditure as soon as there is a legal or constructive obligation committing the charity to that expenditure, it is probable that a transfer of economic benefits will be required in settlement and the amount of the obligation can be measured reliably. Expenditure is accounted for on an accruals basis and has been classified under headings that aggregate all cost related to the category. Where costs cannot be directly attributed to particular headings they have been allocated to activities on a basis consistent with the use of resources.

Grants offered subject to conditions which have not been met at the year end date are noted as a commitment but not accrued as expenditure.

Raising funds

Income from productions and show admission fees, together with cafe income, is included in incoming resources in the period in which they are receivable.

Investment income

Investment income is included when receivable.

Governance costs

Governance costs represents the costs associated with meeting the statutory requirements of the charity.

Allocation and apportionment of costs

Resources expended are recognised in the period in which they are incurred. They include attributable VAT which cannot be recovered.

Costs of generating funds comprise the costs associated with attracting voluntary income and the costs of productions, shows and the cafe.

Charitable expenditure comprises those costs incurred in the delivery of its activities for its beneficiaries and includes both costs that can be allocated directly to such activities and those costs of an indirect nature necessary to support them.

**Notes to the Financial Statements - continued
for the year ended 31st August 2024**

1. ACCOUNTING POLICIES - continued

Allocation and apportionment of costs

All costs are allocated between expenditure categories in the statement of financial activities on a basis designed to reflect the use of the resource.

Tangible fixed assets

Depreciation is provided at the following annual rates in order to write off each asset over its estimated useful life.

Freehold property	- 2% on cost
Fixtures and fittings	- 10% on cost
Computer equipment	- 10% on cost

All fixed assets are initially recorded at cost, which is then depreciated over the estimated useful life of the asset concerned.

Taxation

The charity is exempt from tax on its charitable activities.

Fund accounting

Unrestricted funds can be used in accordance with the charitable objectives at the discretion of the trustees.

Designated funds are unrestricted funds earmarked by the trustee's for particular purposes.

Restricted funds can only be used for particular restricted purposes within the objects of the charity. Restrictions arise when specified by the donor or when funds are raised for particular restricted purposes.

Further explanation of the nature and purpose of each fund is included in the notes to the financial statements.

Pension costs and other post-retirement benefits

The charity operates a defined contribution pension scheme. Contributions payable to the charity's pension scheme are charged to the Statement of Financial Activities in the period to which they relate.

2. DONATIONS AND LEGACIES

	2024	2023
	£	£
Donations	<u>10,341</u>	<u>5,203</u>

Northern Academy of Performing Arts Educational Trust

Notes to the Financial Statements - continued for the year ended 31st August 2024

3. OTHER TRADING ACTIVITIES

	2024	2023
	£	£
Fundraising events	6,865	4,893
Cafe income	44,216	41,764
Sponsorships	2,000	-
	<u>53,081</u>	<u>46,657</u>

4. INVESTMENT INCOME

	2024	2023
	£	£
Deposit account interest	<u>6,537</u>	<u>2,151</u>

5. INCOME FROM CHARITABLE ACTIVITIES

	Activity	2024	2023
		£	£
Direct income	Performing arts activities	453,969	403,583
Grants	Performing arts activities	-	1,770
Outreach	Musical theatre tuition	135,323	148,095
		<u>589,292</u>	<u>553,448</u>

Grants received, included in the above, are as follows:

	2024	2023
	£	£
Hull City Council	<u>-</u>	<u>1,770</u>

6. RAISING FUNDS

Other trading activities

	2024	2023
	£	£
On-site cafe staff costs	13,865	18,923
On-site cafe costs	22,731	18,581
	<u>36,596</u>	<u>37,504</u>

Notes to the Financial Statements - continued
for the year ended 31st August 2024

7. CHARITABLE ACTIVITIES COSTS

	Direct Costs (see note 8) £	Grant funding of activities (see note 9) £	Support costs (see note 10) £	Totals £
Performing arts activities	675,642	-	23,218	698,860
Grants paid for audition costs	-	1,535	-	1,535
	<u>675,642</u>	<u>1,535</u>	<u>23,218</u>	<u>700,395</u>

8. DIRECT COSTS OF CHARITABLE ACTIVITIES

	2024 £	2023 £
Staff costs	266,225	255,723
Rates and water	3,777	3,840
Insurance	15,809	15,267
Light and heat	18,499	17,808
Telephone	12,312	10,436
Postage and stationery	6,487	3,789
Advertising	1,541	8,413
Sundries	11,539	11,755
Freelance and instructor costs	228,232	178,769
Repairs and maintenance	22,354	26,584
Production costs	49,858	45,488
Exam and festival fees	13,232	11,955
Consultancy	16,800	-
Hire costs	3,498	-
Depreciation	5,479	10,918
	<u>675,642</u>	<u>600,745</u>

9. GRANTS PAYABLE

	2024 £	2023 £
Grants paid for audition costs	<u>1,535</u>	<u>1,116</u>

**Notes to the Financial Statements - continued
for the year ended 31st August 2024**

10. SUPPORT COSTS

	Governance costs £
Performing arts activities	<u>23,218</u>

Support costs, included in the above, are as follows:

	2024	2023
	Performing arts activities £	Total activities £
Accountancy	6,240	5,840
Professional fees	4,049	3,824
Bank charges	2,043	1,783
Interest payable and similar charges	<u>10,886</u>	<u>8,906</u>
	<u>23,218</u>	<u>20,353</u>

11. TRUSTEES' REMUNERATION AND BENEFITS

There were no trustees' remuneration or other benefits for the year ended 31st August 2024 nor for the year ended 31st August 2023.

Trustees' expenses

There were no trustees' expenses paid for the year ended 31st August 2024 nor for the year ended 31st August 2023.

12. STAFF COSTS

	2024	2023
	£	£
Wages and salaries	243,318	234,060
Social security costs	17,788	16,805
Other pension costs	<u>5,119</u>	<u>4,858</u>
	<u>266,225</u>	<u>255,723</u>

The average monthly number of employees during the year was as follows:

	2024	2023
Dance and performance	4	4
Administration	<u>4</u>	<u>4</u>
	<u>8</u>	<u>8</u>

No employees received emoluments in excess of £60,000.

Notes to the Financial Statements - continued
for the year ended 31st August 2024

13. COMPARATIVES FOR THE STATEMENT OF FINANCIAL ACTIVITIES

	Unrestricted fund £	Restricted fund £	Total funds £
INCOME AND ENDOWMENTS FROM			
Donations and legacies	5,203	-	5,203
Charitable activities			
Performing arts activities	405,353	-	405,353
Musical theatre tuition	148,095	-	148,095
Other trading activities	44,075	2,582	46,657
Investment income	<u>2,151</u>	<u>-</u>	<u>2,151</u>
Total	<u>604,877</u>	<u>2,582</u>	<u>607,459</u>
EXPENDITURE ON			
Raising funds	37,504	-	37,504
Charitable activities			
Performing arts activities	236,212	-	236,212
Direct charitable activities	384,886	-	384,886
Grants paid for audition costs	<u>-</u>	<u>1,116</u>	<u>1,116</u>
Total	<u>658,602</u>	<u>1,116</u>	<u>659,718</u>
NET INCOME/(EXPENDITURE)	(53,725)	1,466	(52,259)
RECONCILIATION OF FUNDS			
Total funds brought forward	<u>669,978</u>	<u>-</u>	<u>669,978</u>
TOTAL FUNDS CARRIED FORWARD	<u><u>616,253</u></u>	<u><u>1,466</u></u>	<u><u>617,719</u></u>

Notes to the Financial Statements - continued
for the year ended 31st August 2024

14. TANGIBLE FIXED ASSETS

	Freehold property £	Fixtures and fittings £	Computer equipment £	Totals £
COST				
At 1st September 2023	231,746	112,129	62,076	405,951
Additions	-	2,749	1,041	3,790
At 31st August 2024	231,746	114,878	63,117	409,741
DEPRECIATION				
At 1st September 2023	88,753	109,483	61,442	259,678
Charge for year	4,635	680	165	5,480
At 31st August 2024	93,388	110,163	61,607	265,158
NET BOOK VALUE				
At 31st August 2024	138,358	4,715	1,510	144,583
At 31st August 2023	142,993	2,646	634	146,273

15. DEBTORS: AMOUNTS FALLING DUE WITHIN ONE YEAR

	2024 £	2023 £
Trade debtors	40,788	45,140
Prepayments	2,767	21,102
	<u>43,555</u>	<u>66,242</u>

16. CREDITORS: AMOUNTS FALLING DUE WITHIN ONE YEAR

	2024 £	2023 £
Bank loans and overdrafts (see note 18)	13,090	14,600
Trade creditors	8,750	37,152
Social security and other taxes	5,357	7,140
Other creditors	8,431	8,431
Accrued expenses	5,349	7,332
	<u>40,977</u>	<u>74,655</u>

Notes to the Financial Statements - continued
for the year ended 31st August 2024

17. CREDITORS: AMOUNTS FALLING DUE AFTER MORE THAN ONE YEAR

	2024 £	2023 £
Bank loans (see note 18)	<u>109,838</u>	<u>120,706</u>

18. LOANS

An analysis of the maturity of loans is given below:

	2024 £	2023 £
Amounts falling due within one year on demand: Bank loans	<u>13,090</u>	<u>14,600</u>
Amounts falling due between two and five years: Bank loans - 2-5 years	<u>109,838</u>	<u>120,706</u>

19. MOVEMENT IN FUNDS

	At 1.9.23 £	Net movement in funds £	At 31.8.24 £
Unrestricted funds			
General fund	616,253	(82,161)	534,092
Restricted funds			
Frankish Fund	1,466	4,421	5,887
TOTAL FUNDS	<u>617,719</u>	<u>(77,740)</u>	<u>539,979</u>

Net movement in funds, included in the above are as follows:

	Incoming resources £	Resources expended £	Movement in funds £
Unrestricted funds			
General fund	653,295	(735,456)	(82,161)
Restricted funds			
Frankish Fund	5,956	(1,535)	4,421
TOTAL FUNDS	<u>659,251</u>	<u>(736,991)</u>	<u>(77,740)</u>

Notes to the Financial Statements - continued
for the year ended 31st August 2024

19. MOVEMENT IN FUNDS - continued

Comparatives for movement in funds

	At 1.9.22 £	Net movement in funds £	At 31.8.23 £
Unrestricted funds			
General fund	669,978	(53,725)	616,253
Restricted funds			
Frankish Fund	-	1,466	1,466
	<hr/>	<hr/>	<hr/>
TOTAL FUNDS	<u>669,978</u>	<u>(52,259)</u>	<u>617,719</u>

Comparative net movement in funds, included in the above are as follows:

	Incoming resources £	Resources expended £	Movement in funds £
Unrestricted funds			
General fund	604,877	(658,602)	(53,725)
Restricted funds			
Frankish Fund	2,582	(1,116)	1,466
	<hr/>	<hr/>	<hr/>
TOTAL FUNDS	<u>607,459</u>	<u>(659,718)</u>	<u>(52,259)</u>

A current year 12 months and prior year 12 months combined position is as follows:

	At 1.9.22 £	Net movement in funds £	At 31.8.24 £
Unrestricted funds			
General fund	669,978	(135,886)	534,092
Restricted funds			
Frankish Fund	-	5,887	5,887
	<hr/>	<hr/>	<hr/>
TOTAL FUNDS	<u>669,978</u>	<u>(129,999)</u>	<u>539,979</u>

Notes to the Financial Statements - continued
for the year ended 31st August 2024

19. MOVEMENT IN FUNDS - continued

A current year 12 months and prior year 12 months combined net movement in funds, included in the above are as follows:

	Incoming resources £	Resources expended £	Movement in funds £
Unrestricted funds			
General fund	1,258,172	(1,394,058)	(135,886)
Restricted funds			
Frankish Fund	8,538	(2,651)	5,887
	<hr/>	<hr/>	<hr/>
TOTAL FUNDS	<u>1,266,710</u>	<u>(1,396,709)</u>	<u>(129,999)</u>

20. RELATED PARTY DISCLOSURES

There were no related party transactions for the year ended 31st August 2024.



Issuer Smailes Goldie

Document generated Mon, 9th Jun 2025 14:38:11 BST

Document fingerprint cbe6fee84208ceadc627de48ea07ae86

Parties involved with this document

Document processed	Party + Fingerprint
Mon, 9th Jun 2025 16:02:47 BST	Chris Gruca - Signer (3e08b273a068f3d2489a36c36f1b9af0)
Mon, 9th Jun 2025 16:02:47 BST	Helen Rhodes - Copied In (5bda38fdab7b2c2b930cd8df25f732d5)
Mon, 9th Jun 2025 16:04:20 BST	Luke Taylor - Signer (5174dfcffb6288333507dc73080c235a)

Audit history log

Date	Action
Mon, 9th Jun 2025 14:38:11 BST	Envelope generated by Gill Waters (213.249.229.122)
Mon, 9th Jun 2025 14:38:11 BST	Document generated with fingerprint cbe6fee84208ceadc627de48ea07ae86 (213.249.229.122)
Mon, 9th Jun 2025 14:44:13 BST	Sent the envelope to Chris Gruca (chrisgruca@hotmail.com) for signing (213.249.229.122)
Mon, 9th Jun 2025 14:44:15 BST	Document emailed to chrisgruca@hotmail.com
Mon, 9th Jun 2025 15:56:59 BST	Chris Gruca opened the document email. (31.94.29.68)
Mon, 9th Jun 2025 16:01:52 BST	Chris Gruca viewed the envelope (31.94.29.68)
Mon, 9th Jun 2025 16:02:47 BST	Chris Gruca signed the envelope (31.94.29.68)
Mon, 9th Jun 2025 16:02:47 BST	Sent the envelope to Helen Rhodes (Helenrhodes@smailesgoldie.co.uk) for signing (31.94.29.68)
Mon, 9th Jun 2025 16:02:47 BST	Sent the envelope to Luke Taylor (luketaylor@smailesgoldie.co.uk) for signing (31.94.29.68)
Mon, 9th Jun 2025 16:02:48 BST	Document emailed to luketaylor@smailesgoldie.co.uk
Mon, 9th Jun 2025 16:02:50 BST	Document emailed to helenrhodes@smailesgoldie.co.uk
Mon, 9th Jun 2025 16:03:11 BST	Luke Taylor opened the document email. (72.145.83.65)
Mon, 9th Jun 2025 16:03:16 BST	Chris Gruca opened the document email. (31.94.29.68)
Mon, 9th Jun 2025 16:04:08 BST	Luke Taylor viewed the envelope (213.249.229.122)
Mon, 9th Jun 2025 16:04:20 BST	Luke Taylor signed the envelope (213.249.229.122)
Mon, 9th Jun 2025 16:04:21 BST	This envelope has been signed by all parties (213.249.229.122)