

Rural Extension with Africa's Poor

**102 Kidmore Road, Caversham,
Reading RG4 7NB**

Charity registration number 1075121

**Report of the Trustees and Accounts
For the year ended 5 April 2024**

Rural Extension with Africa's Poor

Report of the Trustees

For the year ended 5 April 2024

The Trustees present their report and the accounts of the Trust for the year ended 5 April 2024.

Operations Review

Introduction to REAP

REAP (Rural Extension with Africa's Poor) aims to enable those in Africa who do not have ready access to money, especially those in rural areas, to reach their full potential while becoming good stewards of God's creation. This holistic vision seeks to teach them ways to make use of the many local resources available, so that they can maintain their own dignity and become fully functional in supporting their own families, gain fulfilment and contribute positively to the community.



REAP's approach is to work alongside rural families to counter three problems we have identified as within our scope. These are seen as dependency (overcome by teaching and motivating people to do something themselves rather than wait for external aid), the challenges of money and materialism (by providing spiritual motivation and encouraging selfless sharing with others) and environmental concerns (to be met by encouraging the preservation of natural resources and making productive use of locally available materials which otherwise would sometimes be seen as waste).

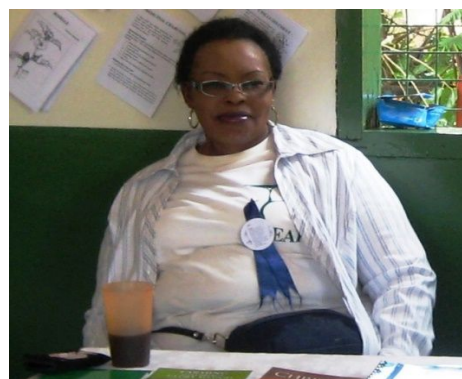
REAP has developed a wide range of practical ideas that can be introduced with little or no cost to the user and cover every aspect of life. These form the core of REAP's teaching and we continue to be proactive in finding ways to get to more people with this teaching. The proactive work focuses on identifying motivated contact people and the training of trainers and through this we have also added to our portfolio of teaching by drawing on the experience of those we have trained as well as trying new things.

REAP's teaching is refined on an ongoing basis, and teaching aids and planting materials that are appropriate to individual needs are produced, recognising different local customs and climates. The REAP team works with and follows up many contacts, particularly within African churches and para-church organisations, to ensure that their teaching is effective, fully accepted and sustainable. Although much of this follow up continues to be by telephone and other remote means, more in-person visits have again been possible this year.

Overview of the Year

During the year we have been able to significantly expand our proactive work reaching out from our field office located in Kajulu in Kisumu. We have this year significantly expanded our extension work actively promoting the growing of Vetiver Grass for protecting the soil from erosion following a successful appeal for funding. We have continued to run successful Natural Medicine training courses, and towards the end of the reporting period have started to once again become active in stove promotion.

We were able to once again have a stand at the Kisumu Regional Show in July where we showcased the scope of our work. Unfortunately, on the last day of the Show the REAP administrator, Anne Sigei collapsed and died. She has been with REAP since the very beginning and has been a vision holder as well as efficiently running the Nairobi office. She has left a big gap in the organisation, which has greatly affected our work. The Director has had to divert his efforts from the extension work to administration while getting the work at the office running efficiently without Anne's presence.



Ms Anne Sigei at a former Kisumu Show

Rural Extension with Africa's Poor

Report of the Trustees

For the year ended 5 April 2024 continued

Operations Review (continued)

Use of the REAP plot of land at Kajulu, near Kisumu

The REAP farm near Kisumu continues to be the centre of activity for the field work. We have planted and demonstrate most of the plants and techniques relating to the different aspects of REAP teaching. These can thus be seen by any visitors. We have received a variety of visitors to the farm, including local groups and also those from much wider afield.

We lost a few metres at the end of the farm due to the land being re-surveyed. This was dealt with amicably with the neighbour and we were able to move the fence accordingly and reorganise that end of the farm including the route of the paths that we use when taking visitors round.

Since moving the Kisumu Office to the farm, the building has been the focus of various improvements and is a clean welcoming place for both visitors and also teaching groups. The rural kitchen and the toilets have both been repaired. A caretaker now stays on site, and this has greatly improved the security and thus productivity of the farm.

The new boundary fence

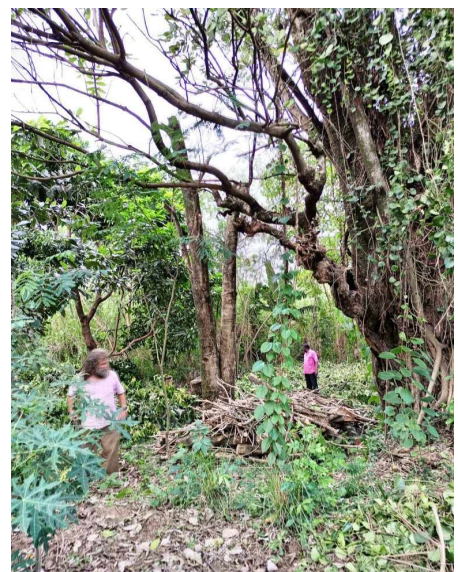


During the year effort has been put into reaching out to the local area. In particular our display at the Kisumu Show attracted attention from the local community leaders and has strengthened our relationships locally. In particular, George has been coopted onto a couple of committees dealing with local response to El Nino and wider environmental matters in the immediate area. He has been able to share teaching and insights on the value of Vetiver Grass and Tree Growing as both protective and mitigating measures. Having a caretaker on site has also meant that more local people have been able to visit for information and planting material.

The rainfall has been reasonable, and with the underground water available on farm and the location of the land we have continued to try a wide range of plants including some new to the area. Since the soil is fully protected against erosion the farm is a visible example of what farmers can do using the simple technology of Vetiver grass; this has continued to be a central part of the teaching that we are seeking to extend. The Vetiver Nursery has continued to be a good source of planting material as we take the teaching out further afield. We have been able to plant some Vetiver grass at key points near the roads in the area.

Throughout the plot and round the periphery, trees continue to be a significant part of our management of the area. We continue to harvest trees that have grown to a stage where they impede the crops during this year, so that it has been a source of some charcoal and more firewood from this sustainable source. This teaching of working with the trees that we are encouraging in our extension work is one of the features that many new visitors comment on. As part of our Creation Care teaching, we promote sustainable measures such as FMNR (Farmer Managed Natural Regeneration), coppicing and pollarding. We have examples of these in the trees within the farm.

Harvesting trees for firewood



Rural Extension with Africa's Poor

Report of the Trustees

For the year ended 5 April 2024 continued

Operations Review (continued)



Two of our trainers visiting the farm

We try and have all the main medicinal plants that REAP teaches about represented at the farm. Some are locally familiar and often considered by others as weeds, so we teach their value so that they are no longer seen as weeds but as a useful local resource. All the new medicinal plants that we teach on can be seen growing by any visitors. The farm is also used for multiplying planting material, both from vegetative materials and from seed, for distribution when extending teaching. We continue to give special emphasis in producing enough rooted *Artemisia annua* cuttings for distribution and always have seeds of Roselle (*Hibiscus sabdariffa*), *Cassia alata* and *Moringa oleifera*.

In order that visitors can see as much as possible when they visit, we have established paths around the farm. However, we also have to have drainage channels, so we have to maintain small bridges across these. Most of these have recently been replaced to enable most people to get round. The plants have been well labelled so that they become a resource for learning, including both the local or indigenous species, with local names, and the exotic introduced species. We continue to experiment in a small way with crops that relate to the needs coming from Climate change and continue to gain experience in the use of Green Manure Cover Crops (GMCC) which have assisted us in maintaining organic soil fertility. We have also begun to see extra benefits from Vetiver in mining nutrients that have leached down beyond the reach of most crops and thus producing a valuable mulch.

The home garden area where we practice ideas such as container planting and the keyhole garden continues to show ideas that are particularly relevant for visitors from Kisumu town. This is partly a demonstration of what can be done on very small areas, emphasising ideas relevant for urban farming, but is also a useful source for the kitchen. Visitors often eat food from this garden cooked in our improved local kitchen. The external rural kitchen, which has been fitted out as an operational local kitchen using the fuel saving stoves, and other aspects of teaching included in the REAP extension teaching, has continued to be used and is always a focus on interest for many of our visitors. It is often the place where visitors are first welcomed.



Sam teaching about GMCC

Rural Extension with Africa's Poor

Report of the Trustees

For the year ended 5 April 2024 continued

Operations Review (continued)

Teaching and Training

REAP continues to focus on extending the teaching we have developed into rural communities through both formal seminars and less formal input to local groups. Much local teaching is conducted on the planting, preparation and use of Natural medicines, sometimes covering a range of medicinal plants and sometimes concentrating on specific ones for the needs of a group showing interest. Training is given at different levels according to levels of understand and local needs. The main requests are for training in Natural Medicines and Environmental issues. Sometimes these are combined and sometimes the training is specific.

REAP conducts regular 'Training of Trainers' (TOT) seminars in order to equip people from a range of backgrounds and locations with the knowledge to take to their own work. This reporting year, we have been able to conduct two major one-week seminars on Natural Medicines conducted by REAP staff. In April 2023 we had 21 participants at the international training, representing seven different nationalities and in October 2023 we had 18 participants. We conduct these trainings at Subiaco Centre in Karen on the outskirts of Nairobi where one of our former trainees has established an impressive medicinal garden. The training covers a basic focused curriculum on the growing, processing and use of proven medicinal plants and products.

We continue to emphasise the value of Natural Medicines for general health and from our experience in Natural Medicines for Health we continue to find ways that this can be more easily understood. Our focus upon *Artemisia annua* is seen as particularly relevant. With every seminar we are able to add to our recommendations and expand our teaching.



Photos of training in Subiaco Centre, Karen



Rural Extension with Africa's Poor

Report of the Trustees

For the year ended 5 April 2024 continued

Operations Review (continued)

In November Rev Rosalia conducted an intensive five-day training on Natural Medicines for Sustainable Agriculture Tanzania (SAT) in Morogoro, Tanzania with the help of one of the trainers who we have trained. 13 participants completed the training.



Seminar at Morogoro

Rural Extension with Africa's Poor

Report of the Trustees

For the year ended 5 April 2024 continued

Operations Review (continued)

REAP's proactive work is based on the Kisumu Office and the area within reasonable reach of Kisumu. REAP staff have been invited to conduct non-residential trainings at the local level at various local churches. These include facilitating sessions within conventions and conferences, as well as some days organised specifically for taking the REAP teaching to the church members. REAP facilitated a two day training on Natural Medicines at the Church of Peace in Africa (CPA) Youth in December 2023 and a further two days follow up in January for members of the church as well as five local Community Health Volunteers. Also in January the women's ministry was facilitated with training on Natural Medicines. Teaching was also given to various groups at Evangelical Christ Church in Africa (ECCA) mainly relating to Natural Medicines and Creation Care.

The team has continued to follow up on specific teaching. The team has been following up on many of those who have been for training, and especially those who have been sponsored. Several follow up visits have been made to the Everyday Bible and Discipleship College (EBD) at Kamukuywa to give further practical teaching on the Artemisia planted and to help in the establishment of a herbal clinic there through some of our trainees. REAP Staff were invited as guests for the opening.

Harvesting Artemisia at EBD during a visit



Environmental Teaching

This year in our environmental Creation Care teaching REAP has put particular emphasis on promoting Vetiver Grass as an easily used tool for soil and water conservation and thus care of the environment. We have had Vetiver Grass available from our nursery in Kajulu, but we have focused on proactive extension in four main areas, namely Upper Nyakach, Kajulu and Songhor in Kisumu County and Butere in Kakamega County. In three of these we have a local contact person who is actively promoting the grass and in Kajulu the extension is mainly from the farm.

A number of those we have trained in the past have been using Vetiver Grass for soil conservation, but the programme this year has considerably increased the planting thanks to funding raised through the Big Give matched funding appeal in 2023. Our substantial Vetiver Grass nursery is a local source of planting material, and we have established a new nursery at each of the other centres. The initial emphasis has been on the establishment of a central nursery and then small local Vetiver grass nurseries on farm and on repairing and improving existing hedges. The extension staff have been identifying interested local farmers and as more grass becomes available, they have been working with farmers to establish strategic hedges. We have also been able to share teaching on the value and planting of the grass more widely over the phone or by email, or through local contact people we have trained in the past which has meant spread to some areas that we have not visited.

Rural Extension with Africa's Poor
Report of the Trustees
For the year ended 5 April 2024 continued

Operations Review (continued)



REAP has continued to network with other organisations with an emphasis on Creation Care. We give teaching relating to Creation Care and the Gospel whenever possible, encouraging churches to be responsible stewards in caring for the environment. It is a major topic of discussion for most visitors to our farm and also the Nairobi office. Publicity in the media in relation to climate change and its impact on farming has meant that there is a growing concern at all levels of society, and in response we have been emphasising the Biblical mandate to care for God's creation.

Rural Extension with Africa's Poor

Report of the Trustees

For the year ended 5 April 2024 continued

Operations Review (continued)

Building on years of experience we have practical teaching, and we have become more active in challenging misconceptions and wrong practices. The initiative on Faith Based Tree Growing has been slow but we have had opportunities to share our experience working with churches on a Biblically based approach to motivating church members to care for the environment. The growing awareness that we have witnessed in all the fora we are involved in gives us impetus for continuing to share the message.

Kisumu Show.

This year we have for the first time since before COVID had a stand at the Kisumu Regional Show in July. We were able to use the stand we had used in the past in which we had planted trees and were able to benefit from the ambiance thus created. The building that we had used in the past had been demolished so we decided to use a tent for the main display and to build a purpose-built kitchen of the type common in rural areas but incorporating all our teaching on an improved rural kitchen, including both the efficient hearth and other low-cost improvements.



As soon as we decided to have a stand again Samuel Ouma planted a demonstration Vetiver hedge across the plot and also planted a Vetiver Nursery for practical teaching. In a plot where we already have well established trees this was part of the overall Creation Care message that we shared, and the main technology we emphasised for managing soil and water conservation. Many contacts were made during the show period and as a result grass has been supplied to several interested people outside the main project areas. Others have since come to buy slips direct from the farm.

Rural Extension with Africa's Poor

Report of the Trustees

For the year ended 5 April 2024 (continued)

Operations Review (continued)

We also had an area in which we planted many medicinal plants to show the range of plants that we use and teach about. This was something that attracted a lot of interest and we were also able to display how we prepare and use many of these through a display table within the tent.

Our display attracted a lot of interest, and we were awarded two first place trophies, one second place and two third place. This helped attract more visitors to the stand, and we were able to share information and network through the stand. Unfortunately, we lost our colleague on the last day of the show which greatly affected our ability to follow up on some folks.



The Nairobi Office

The Nairobi office continues to be the communication centre for REAP, and with the resumption of personal contact following the restrictions of the pandemic, we had in the first half of the year once again seen a wide range of visitors including a number from North America and Europe though most visitors are locally based people seeking information and advice. The loss of Anne, our administrator, had a significant effect on the office in the second half of the year.

It is however still a centre for sharing of ideas more widely and for networking with others interested in what we teach, though some of this sharing we now do electronically. REAP continues to be the local contact organisation and distribution centre for named publications and as a result we have continued to have many visitors interested in Natural Medicines, and this has led to some strategic linkages and sharing of ideas and teaching in the wider sphere of REAP's teaching. Our reach has extended far beyond the areas where we are proactive through those that we have trained recently in seminars and other contacts through networking.

We have continued our links with the ECHO regional centre in Arusha, and with CMS-Africa, based in Nairobi. We have welcomed to the Nairobi office several individuals and representatives of NGOs and churches throughout the region who come to discuss ideas, and this enables the spread of REAP teaching much more widely than in the areas where REAP is proactive. We have continued to follow up on contacts working in South Sudan who continue to pass through the Nairobi office for ideas for their work there. Some from other parts of Africa have contacted us via electronic media, particularly in relation to our teaching on Natural Medicines and Creation Care, and we have been able to input into a number of think tanks in relation to sustainable agricultural production and responding practically to the challenges of climate change.

Plans for the Year ahead

In the year ahead we expect to be fully back to the mode of working that we had prior to the pandemic. We have plans to continue with the main messages with a focused emphasis this year on protecting the soil through the use of Vetiver grass, and active promotion of stoves and the improved rural kitchens. We will continue with the four focus areas in western Kenya for much more proactive work on extending Vetiver Grass.

We have booked the location and dates for two international seminars on Natural Medicine and have received requests for other more localised training.

Prepared by Dr Roger Sharland, REAP Director

Rural Extension with Africa's Poor

Report of the Trustees

For the year ended 5 April 2024 (continued)

Trustees' Report

The Trust Rural Extension with Africa's Poor "REAP" is governed by a deed dated 18th March 1999.

The principal objectives of REAP are: -

- To support (financially or otherwise) individuals and organisations operating in Africa and being engaged in the relief of poverty, sickness and infirmity in Africa and all forms of need, hardship or distress associated therewith;
- To promote and further widen rural development thinking so as better to assist the support of and eventual self-sufficiency of poor local African communities;
- To advance and further the religious and other charitable work of local churches in Africa; and
- To promote and further educational endeavour in any or all of the above areas.

These objectives are achieved through REAP in Kenya and other similar charitable agencies.

In Kenya REAP provides teaching relating to Creation Care and Natural medicines primarily by encouraging churches to be responsible stewards. REAP also spends significant time teaching women about development in rural kitchens.

Composition of the Trustee Board

During the year the make-up of the Trustee Board was as follows: -

Trustee		Term of office
Judith Deborah Wahinya Glover	Trustee	Three years to 7th December 2026
Philip M Johnson	Chair	One year to 31st October 2024
Stephen Burgess	Secretary	Three years to 31st October 2024
Nicholas Burn	Treasurer	Two years to 30th June 2025

In October 2023:

- Philip M. Johnson agreed to serve a further year to 31st October 2024; and
- Stephen Burgess became Secretary to the Trustee Board and retained responsibility for Safeguarding & Data Protection.

From 7th December 2023 REAP operated with four trustees after Judith Deborah Wahinya Glover joined the Trustee Board.

Operations

The area of REAP's work continues to be Kenya and although REAP was set up some 25 years ago its missional work is both central and relevant to today's society, particularly in the areas of:

- Sustainable development** - agriculture and soil conservation, including the promotion of Vetiver grass which is a low cost, replicable solution to reduce soil erosion and improve crop productivity, and it has other uses that benefit small farmers.
- Promotion of natural medicines** - including Artemesia for malaria prevention, Hibiscus tea and Moringa to improve health and nutrition. Teaching on the value and use of medicinal plants which are an alternative to conventional medicines.
- Empowerment of women** - including the work with stoves and energy saving devices. REAP's work with women's church fellowships provides teaching to reduce their daily expenditures.

Rural Extension with Africa's Poor

Report of the Trustees

For the year ended 5 April 2024 (continued)

Trustees' Report (continued)

REAP Kenya continues to promote awareness of the challenges of global climate change and teaching on how to respond appropriately.

For the first time, in 2023, we applied to the Big Give – <https://biggive.org> - for matched funding against a two-year Vetiver grass project. In April 2023 we reached the target funding level of £12,000. Supporters donated £7,000 and the Big Give provided £5,000. We submitted a stoves project to the Big Give in the last quarter of the 2023-2024 financial year and were successful in getting into their programme for 2024-2025.

Trustee efforts continue to try and increase the awareness of REAP's activities and work through various communication channels e.g., newsletters, increased stories / updates through REAP's Facebook page, website development and new options for giving.

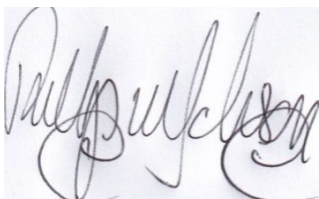
During the year Trustees reviewed REAP's Safeguarding Policy; and continued to operate a lower limit funding policy for operations in Kenya – this ensures that the Trust continues to operate even with low levels of cash.

Finance

The sources of REAP's funding are giving from Churches, Charitable Trusts (which are difficult to predict and depend on applications), and individual giving. In 2023/24 income was £43,800 which was up by £12,858 from the previous year. This increase was primarily due to income received from the Big Give.

During the year REAP UK made grants of £43,689 to REAP Kenya. Less than 2.2% of income was used to cover administrative and promotional costs. Except for examination (Audit) fees all the income is applied to operations in Kenya including missionary work, training, natural medicine seminars, safeguarding and up-keep of the Kisumu farm.

REAP "The Trust" does not employ any staff and trustees are not remunerated.



By order of the Board
Philip M Johnson, Chair
Dated: 11 November 2024

**Independent Examiner's Report to the Trustees of
Rural Extension with Africa's Poor
For the year ended 5 April 2024 (continued)**

I report on the accounts of Rural Extension with Africa's Poor (the charity) for the year ended 5 April 2024.

Responsibilities and basis of report

As the charity's trustees you are responsible for the preparation of the accounts in accordance with the requirements of the Charities Act 2011 ('the Act').

I report in respect of my examination of the charity's accounts as carried out under section 145 of the Charities Act 2011 ('the 2011 Act'). In carrying out my examination I have followed all the applicable Directions given by the Charity Commission under section 145(5)(b) of the Act.

Independent examiner's statement

I have completed my examination. I confirm that no matters have come to my attention in connection with the examination which gives me cause to believe that, in any material respect:

- accounting records were not kept in accordance with section 130 of the Charities Act; or
- the accounts did not accord with the accounting records; or
- the accounts do not comply with the applicable requirements concerning the form and content of accounts set out in the Charities (Accounts and Reports) Regulations 2008 other than any requirement that the accounts give a 'true and fair' view which is not a matter considered as part of an independent examination.

I have no concerns and have come across no other matters in connection with the examination to which attention should be drawn in this report in order to enable a proper understanding of the accounts to be reached.



Simon Porter FCA
Independent Examiner
120 Woodcote Road, Caversham, Reading RG4 7EZ

Dated: 11 November 2024

Rural Extension with Africa's Poor

Statement of Financial Activities For the year ended 5 April 2024

	Note	2024 £	2023 £
Incoming resources:			
Donations received	2	40,415	28,769
Gift Aid tax receivable		3,385	2,173
Total incoming resources in the period		43,800	30,942
Resources expended:			
In furtherance of the Charity's objectives:			
Grants made	3	43,689	38,545
For management and administration:			
Website		0	73
Governance		523	54
Fees to independent examiner		400	400
Total expenditure in the period		44,612	39,072
Net (outgoing)/incoming resources and net movement in funds in the period		(812)	(8,130)
Funds brought forward at 5 April 2024 (2023)		17,091	25,221
Funds carried forward at 5 April 2024 (2023)		16,279	17,091

The Notes on page 15 form part of these Accounts

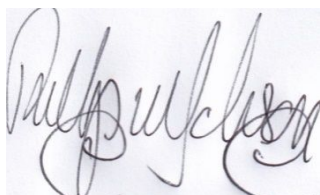
Rural Extension with Africa's Poor

Balance Sheet As at 5 April 2024

Charity registration number 1075121

	Note	2024 £	2023 £
Current assets:			
Debtors	5	2,238	2,168
Bank balance		14,441	15,322
		<u>16,679</u>	<u>17,490</u>
Current liabilities:			
Accruals		400	400
		<u>400</u>	<u>400</u>
Net current assets and net assets		<u>16,279</u>	<u>17,090</u>
Accumulated funds	4	<u>16,279</u>	<u>17,090</u>

These Accounts were approved by the Board of Trustees on 11 November 2024.



Philip M Johnson
Trustee
Dated: 11 November 2024

The Notes on page 15 form part of these Accounts

Rural Extension with Africa's Poor

Notes to the Accounts

As at 5 April 2024

1. Accounting policies

These accounts have been prepared using the following accounting policies:

Donations received are included when they are received, net of tax where appropriate.

Tax received is accrued in the year that the corresponding gift is received.

Income from sales of books and videos is included when it is received.

Interest received is included net of tax when it is received.

	2024 £	2023 £
2. Donations received		
Donations received	<u>40,415</u>	<u>28,769</u>
3. Grants		
Grants made	<u>43,689</u>	<u>38,545</u>
4. Movements in Funds		
Unrestricted funds:		
Balance at start of year	17,091	25,221
Net incoming resources for year	<u>(812)</u>	<u>(8,130)</u>
Balance at end of year	<u>16,279</u>	<u>17,091</u>
Restricted funds:		
Balance at start of year	0	0
Net incoming resources for year	<u>0</u>	<u>0</u>
Balance at end of year	<u>0</u>	<u>0</u>
Accumulated funds	<u>16,279</u>	<u>17,091</u>
5. Debtors		
Gift Aid recoverable	<u>2,238</u>	<u>2,168</u>
	<u>2,238</u>	<u>2,168</u>