

RURAL EXTENSION WITH AFRICA'S POOR

England & Wales · Charity number 1075121

Details

Other names REAP

Status Registered

Legal form Other

Registered 1999-04-15

Register [View on the Charity Commission register](#)

Contact

Address 123 Belmont Road
Reading
RG30 2UY

Phone 07776235400

Email ReapUK99@gmail.com

Website www.reap-eastafrica.org

Activities

Objects: TO SUPPORT (FINANCIALLY OR OTHERWISE) INDIVIDUALS AND ORGANISATIONS OPERATING IN AFRICA AND BEING ENGAGED IN THE RELIEF OF POVERTY SICKNESS AND INFIRMITY IN AFRICA AND ALL FORMS OF NEED HARDSHIP OR DISTRESS ASSOCIATED THEREWITH (FOR FULL DETAILS SEE DECLARATION OF TRUST)

Activities: The Charity supports individuals and organisations operating in Africa engaged in the relief of poverty, principally by enabling local churches to learn and apply principles of locally sustainable agriculture.

Classification

- **How:** Makes Grants To Organisations, Provides Human Resources, Sponsors Or Undertakes Research
- **What:** Education/training, The Advancement Of Health Or Saving Of Lives, The Prevention Or Relief Of Poverty, Environment/conservation/heritage, Economic/community Development/employment
- **Who:** Other Defined Groups

Geography

- **Area of benefit:** AFRICA
- Kenya

Finances

Period end	Income	Expenditure	Assets	Employees
2025-04-05	£34,093	£34,473	-	-
2024-04-05	£43,800	£44,612	-	-
2023-04-05	£30,942	£39,072	-	-
2022-04-05	£45,602	£37,419	-	-
2021-04-05	£33,653	£34,710	-	-

Trustees

Name	Role	Appointed
Stephen James Burgess	Chair	2026-01-30
Judith Deborah Njahira Wahinya		2023-12-07
Nicola Rachel Simpson		2024-06-23

RURAL EXTENSION WITH AFRICA'S POOR

England & Wales - Charity number 1075121

Accounts

Rural Extension with Africa's Poor

**5 Beacon Court, Southcote Road
Reading RG30 2ER**

Charity registration number 1075121

**Report of the Trustees and Accounts
For the year ended 5 April 2025**

Rural Extension with Africa's Poor

Report of the Trustees

For the year ended 5 April 2025

The Trustees present their report and the accounts of the Trust for the year ended 5 April 2025.

Operations Review

Introduction to REAP

REAP (Rural Extension with Africa's Poor) aims to enable those in Africa who do not have ready access to money, especially those in rural areas, to reach their full potential while becoming good stewards of God's creation. This holistic vision seeks to teach them ways to make use of the many local resources available, so that they can maintain their own dignity and become fully functional in supporting their own families, gain fulfilment and contribute positively to the community.



REAP's approach is to work alongside rural families to counter three problems we have identified as within our scope. These are seen as dependency (overcome by teaching and motivating people to do something themselves rather than wait for external aid), the challenges of money and materialism (by providing spiritual motivation and encouraging selfless sharing with others) and environmental concerns (to be met by encouraging the preservation of natural resources and making productive use of locally available materials which otherwise would sometimes be seen as waste).

REAP has developed a wide range of practical ideas that can be introduced with little or no cost to the user and cover every aspect of life. These form the core of REAP's teaching and we continue to be proactive in finding ways to get to more people with this teaching. The proactive work focuses on identifying motivated contact people and the training of trainers and through this we have also added to our portfolio of teaching by drawing on the experience of those we have trained as well as trying new things.

REAP's teaching is refined on an ongoing basis, and teaching aids and planting materials that are appropriate to individual needs are produced, recognising different local customs and climates. The REAP team works with and follows up many contacts, particularly within African churches and para-church organisations, to ensure that their teaching is effective, fully accepted and sustainable. Although some of this follow up continues to be by telephone and other remote means, more in-person visits have again been possible this year. Some of these visits may be seen as quality control so that the full benefits are realised; this is especially the case in the planting of Vetiver Grass and the moulding of stoves.

Overview of the Year

During the year we have continued following up contacts in our proactive work reaching out from our field office located in Kajulu in Kisumu County. We have this year significantly expanded our extension work, with particular emphasis on actively promoting the growing of Vetiver Grass for protecting the soil from erosion. We have continued to run successful Natural Medicine training courses, and have become significantly active in stove promotion and extending ideas on improved rural kitchens.

Rural Extension with Africa's Poor

Report of the Trustees

For the year ended 5 April 2025 continued

Operations Review (continued)

Use of the REAP plot of land at Kajulu, near Kisumu

The REAP farm near Kisumu continues to be the centre of activity for the field work. We plant and demonstrate most of the plants and techniques relating to the different aspects of REAP teaching on Creation Care and Natural Medicines, and have a working kitchen incorporating the various aspects we teach. These can thus be seen by any visitors. We have received a variety of visitors to the farm, including local groups and also those from much wider afield.

The Kisumu Office is now located in the building on the farm and has become the centre of communication locally. A new building has been constructed for moulding liners and teaching women to make them. It is close to the kitchen which enables the teaching to be related to that. The caretaker who stays on site is now very familiar with the teaching of REAP, and as well as greatly improving the security and thus productivity of the farm he is able to communicate well with visitors when other team members are not present.

George explains the use of Vetiver Grass to visitors at the farm



Replanting the Vetiver nursery after harvest

The rainfall has been reasonable, but unpredictable with much less seasonality than in the past. Although this is a challenge for many farmers, with the underground water available on farm and the location of the land we have continued to try a wide range of plants including some new to the area. Since the soil is fully protected against erosion the farm is a visible example of what farmers can do using the simple technology of Vetiver grass; this has continued to be a central part of the teaching that we are seeking to extend. To this end all the Vetiver hedges have been renovated and maintained giving a very good visual image on what Vetiver hedges actually achieve in different contexts within the farm. The Vetiver Nursery has continued to be a good source of planting material as we take the teaching out further afield. The whole nursery was harvested and the slips distributed and sold, and the whole area replanted so that more is available again. We have been able to plant some Vetiver grass at key points near the roads in the area.

Rural Extension with Africa's Poor

Report of the Trustees

For the year ended 5 April 2025 continued

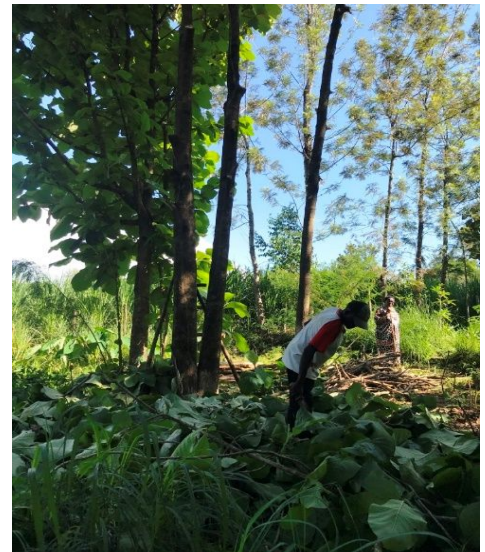
Operations Review (continued)

Throughout the plot and round the periphery, trees continue to be a significant part of our management of the area. We continue to manage the trees that have grown to a stage where they impede the crops during this year, so that it has been a source of some charcoal and more firewood from this sustainable source. This teaching of working with the trees that we are encouraging in our extension work is one of the features that many new visitors comment on. As part of our Creation Care teaching, we promote sustainable measures such as FMNR (Farmer Managed Natural Regeneration), coppicing and pollarding. We have examples of these in the trees within the farm.

We try and have all the main medicinal plants that REAP teaches about represented at the farm. Some are locally familiar and often considered by others as weeds, so we teach their value. We often talk with visitors in perceptions of weeds so that they go away recognising a useful local resource. All the new medicinal plants that we teach on can be seen growing by any visitors.

The farm is also used for multiplying planting material, both from vegetative materials and from seed, for distribution when extending teaching. We continue to give special emphasis in producing enough rooted *Artemisia annua* cuttings for distribution and always have seeds of Roselle (*Hibiscus sabdariffa*), *Cassia alata* and *Moringa oleifera*, as well as a few others of more specialist interest.

In order that visitors can see as much as possible when they visit, we have established paths around the farm. From trees harvested from within the farm most of the small bridges across the drainage channels etc have been replaced this year. The plants are labelled so that they become a resource for learning, including both the local or indigenous species, with local names, and the exotic introduced species. We continue to experiment in a small way with crops that relate to the needs coming from Climate change and continue to gain experience in the use of Green Manure Cover Crops (GMCC) which have assisted us in maintaining organic soil fertility. We have also begun to add to the soil conservation teaching by emphasising the benefits from Vetiver in mining nutrients that have leached down beyond the reach of most crops and thus producing a valuable mulch. Now that we have well established hedges, we have plenty of grass available and mulching is clearly seen throughout the farm.



Pruning trees on the farm



Sam cutting Tithonia for mulch on the farm

Rural Extension with Africa's Poor

Report of the Trustees

For the year ended 5 April 2025 continued

Operations Review (continued)

The home garden area where we practice ideas such as container planting and the keyhole garden has been reduced with the construction of the stoves training building. We however continue to show ideas that are particularly relevant for visitors from Kisumu town. This is partly a demonstration of what can be done on very small areas, emphasising ideas relevant for urban farming, but is also a useful source for the kitchen. Visitors often eat food from this garden cooked in our improved local kitchen. The external rural kitchen, which has been fitted out as an operational local kitchen using the fuel saving stoves, and other aspects of teaching included in the REAP extension teaching, has continued to be used and is always a focus on interest for many of our visitors. It is often the place where visitors are first welcomed.



Cut Vetiver grass used for mulch

Teaching and Training

REAP continues to focus on extending the teaching we have developed into rural communities through both formal seminars and less formal input to local groups. Much local teaching is conducted on the planting, preparation and use of Natural medicines, sometimes covering a range of medicinal plants and sometimes concentrating on specific ones for the needs of a group showing interest. Training is given at different levels according to levels of understand and local needs. The main requests are for training in Natural Medicines and Environmental issues. Sometimes these are combined and sometimes the training is specific.

REAP conducts regular 'Training of Trainers' (TOT) seminars in order to equip people from a range of backgrounds and locations with the knowledge to take to their own work. This reporting year, we have been able to conduct two major one-week seminars on Natural Medicines conducted by REAP staff. In April 2024 we had 21 participants at the international training, including a significant number of younger participants and in November 2024 we also had 21 participants, representing 6 countries. We conduct these trainings at Subiaco Centre in Karen on the outskirts of Nairobi where one of our former trainees has established an impressive medicinal garden. The training covers a basic focused curriculum on the growing, processing and use of proven medicinal plants and products. The main emphasis is understanding the plants and their value for health.

**Rural Extension with Africa's Poor
Report of the Trustees
For the year ended 5 April 2025 continued**

Operations Review (continued)



Photos of training in Subiaco Centre, Karen



Rural Extension with Africa's Poor

Report of the Trustees

For the year ended 5 April 2025 continued

Operations Review (continued)

Sadly, a very close colleague from Subiaco, Sister Francesca Kaesa, who has over the years helped with the training died shortly after the April seminar. She had attended one of our trainings in 2016 and immediately after the seminar had started a medicinal garden at Subiaco. She continued attending the seminars we then held at the centre, and we had the advantage of using the garden in the teaching and she was an important part of the training team during seminars. She is greatly missed by so many who she helped but the business she set up MAYDS (Medicine At Your DoorStep) continues, and we work closely with them, encouraging and assisting when we can.



Sister Francesca in her Artemisia plot

We continue to emphasise the value of Natural Medicines for general health and from our experience in Natural Medicines for Health we continue to find ways that this can be more easily understood. Our focus upon Artemisia annua is seen as particularly relevant. With every seminar we are able to add to our recommendations and expand our teaching.

In March 2025 Rev Rosalia and Pastor George conducted an intensive four-day training on Natural Medicines for the Africa Inland Church Missionary College in Eldoret. 17 participants attended the training.



Seminar at Morogoro

REAP's proactive work continues to be based on the Kisumu Office and the area within reasonable reach of Kisumu. REAP staff have been invited to conduct non-residential trainings at the local level at various local churches. These include facilitating sessions within conventions and conferences, as well as some days organised specifically for taking the REAP teaching to the church members. During the year we have further strengthened our long-term partnership with anamed in Germany and also built links through them with Coworkers (formerly Hilfe für Brüder) who have given some support.

The team has continued to follow up on specific teaching. The team has been following up on many of those who have been for training, and especially those who have been sponsored. Several follow up visits have been made to the Everyday Bible and Discipleship College (EBD) at Kamukuywa reinforcing the practical teaching on the Artemisia planted and to helping those who have been trained through our seminars to reach out to others in the community.

Rural Extension with Africa's Poor
Report of the Trustees
For the year ended 5 April 2025 continued

Operations Review (continued)

Environmental Teaching

This year in our environmental, Creation Care, teaching REAP has continued the emphasis on promoting Vetiver Grass as an easily used and very effective tool for soil and water conservation and thus care of the environment. We have had Vetiver Grass available from our nursery in Kajulu, but we have focused on proactive extension in four main areas, namely Upper Nyakach, Kajulu and Songhor in Kisumu County and Butere in Kakamega County. In three of these we have a local contact person who is actively promoting the grass and in Kajulu the extension is mainly from the farm.

The local nurseries planted in 2023/24 have been producing planting material for the establishment of new Vetiver grass hedges in all these areas. The extension staff have been identifying interested local farmers and as more grass becomes available, they have been working with farmers to establish strategic hedges.



Rural Extension with Africa's Poor
Report of the Trustees
For the year ended 5 April 2025 continued

Operations Review (continued)

In June 2024 the team conducted a seminar for farmers involved in planting Vetiver grass in the Butere area with 27 participants and then a second seminar in March 2025 on Vetiver Grass in upper Nyakach, attended by 38 participants. All these farmers took home planting material and now have their on-farm Vetiver nurseries, and most have started protecting their land with Vetiver Grass hedges. REAP has also more recently been working with a new group in Seme on the western edge of Kisumu County.



Vetiver Seminar in Butere



Vetiver Seminar in Upper Nyakach

Rural Extension with Africa's Poor

Report of the Trustees

For the year ended 5 April 2025 (continued)

Operations Review (continued)

REAP has continued to network with other organisations with an emphasis on Creation Care. We give teaching relating to Creation Care and the Gospel whenever possible, encouraging churches to be responsible stewards in caring for the environment. As others pick up the vision, we make our teaching materials available to them. It is a major topic of discussion for most visitors to our farm and also the Nairobi office. Publicity in the media in relation to climate change and its impact on farming has meant that there is a growing concern at all levels of society, and in response we have been emphasising the Biblical mandate to care for God's creation.

Building on years of experience we have developed practical teaching, and we have become more active in challenging misconceptions and wrong practices. Faith Based Organisations are becoming increasingly recognised as significant in Tree Planting, but we try and emphasise that planting is not enough as they need to be cared for to survive so we talk of Tree Growing. From our experience of working with churches we emphasise a Biblically based approach to motivating church members to care for the environment. The growing awareness that we have witnessed in all the fora we are involved in gives us impetus for continuing to share the message.

REAP CWD Stoves Programme

The CWD (Christian Women in Development) programme focuses on teaching through the women's fellowships. This year we have obtained funding to resurrect our Improved Kitchen and Stoves programmes to an active level. Domtila has initially spent time following up those we have worked with in the past on stoves and has visited existing work and been looking for new groups to train and encourage in the work. We have purchased new moulds for the establishment of new groups who have been identified as centres for the making of the moulds and training other satellite groups in the area. Having reactivated most of the groups that were active before the COVID pandemic Domtila is now focusing on training new groups.



Domtila with some new moulds ready



A two-room building has been built at the REAP farm in Kajulu as the centre for training as well as a certain amount of production.

We have established a five-day training which includes moulding of the liners and installation in the kitchen, and efficient use of firewood including managing trees on farm. We also include other improved kitchen ideas including making and using fireless cookers, making a mud cupboard and seats in the kitchen and using a clay pot to make a local fridge for keeping food cool.

Rural Extension with Africa's Poor
Report of the Trustees
For the year ended 5 April 2025 (continued)

Operations Review (continued)



Before the COVID pandemic we were involved in teaching on making reusable sanitary pads in schools. With the closure of the schools during the early part of the pandemic and then the very busy schedule as the schools reopened this was not possible, but we have recently started reaching out again to a few schools with this teaching, and plan to do more.

The Nairobi Office

The Nairobi office has continued to be the communication centre for REAP, though at a lower level following the loss of our long-term administrator, Anne, in 2023.

It is however still a centre for sharing of ideas more widely and for networking with others interested in what we teach, though some of this sharing we now do electronically. REAP continues to be the local contact organisation and distribution centre for anamed publications and as a result we have continued to have many visitors interested in Natural Medicines, and this has led to some strategic linkages and sharing of ideas and teaching in the wider sphere of REAP's teaching. Our reach has extended far beyond the areas where we are proactive through those that we have trained recently in seminars and other contacts through networking.

During the year we have had stronger links with MAYDS located at Subiaco in Kenya and we have been encouraging them in the production of planting materials so that we no longer do that ourselves from Nairobi.

Rural Extension with Africa's Poor
Report of the Trustees
For the year ended 5 April 2025 (continued)

Operations Review (continued)

Plans for the Year ahead

In the year ahead we expect to be fully back to the mode of working that we had prior to the pandemic. We have plans to continue with the main messages with a focused emphasis this year on protecting the soil through the use of Vetiver grass, and active promotion of stoves and the improved rural kitchens. We will continue with the four focus areas in western Kenya for much more proactive work on extending Vetiver Grass. We plan to have at least two local seminars on Vetiver Grass and also local seminars on natural medicines. We already have plans for stoves training in the centre in August 2025. We are also looking to expand teaching making reusable sanitary towels through more schools.

We have booked the location and dates for two international seminars on Natural Medicine and have received requests for other more localised training. We are also planning a Training of Trainers follow up seminar for those who have completed three trainings and are recognised as TOTs.

Prepared by Dr Roger Sharland, REAP Director

Rural Extension with Africa's Poor Report of the Trustees For the year ended 5 April 2025 (continued)

Trustees' Report

The Trust Rural Extension with Africa's Poor "REAP" is governed by a deed dated 18th March 1999.

The principal objectives of REAP are: -

- a) To support (financially or otherwise) individuals and organisations operating in Africa and being engaged in the relief of poverty, sickness and infirmity in Africa and all forms of need, hardship or distress associated therewith;
- b) To promote and further widen rural development thinking so as better to assist the support of and eventual self-sufficiency of poor local African communities;
- c) To advance and further the religious and other charitable work of local churches in Africa; and
- d) To promote and further educational endeavour in any or all of the above areas.

These objectives are achieved through REAP in Kenya and other similar charitable agencies.

In Kenya REAP provides teaching relating to Creation Care and Natural medicines primarily by encouraging churches to be responsible stewards. REAP also spends significant time teaching women about development in rural kitchens.

Composition of the Trustee Board

During the year the make-up of the Trustee Board was as follows: -

Trustee		Term of office
Judith Deborah Wahinya Glover	Trustee	Three years to 7th December 2026
Philip M. Johnson	Chair	Six months to 5th April 2025
Stephen Burgess	Secretary	One year to 31st October 2025
Nicholas Burn	Treasurer	Two years to 30th June 2025
Nicky Simpson	Trustee	Three years to 23rd June 2027

In October 2024:

- Philip M. Johnson agreed to serve a further 6 months to 5th April 2025. The Trustees are grateful to Philip who served for 6 years as chair, and wish him well for the future.
- Stephen Burgess agreed to serve until October 31st 2025. From April 2025 Stephen will become chair until October 2025.

From 23rd June 2024 REAP operated with five trustees after Nicky Simpson joined the Trustee Board. From April 2025 Nicky became Secretary.

Operations

The area of REAP's work continues to be Kenya and although REAP was set up some 25 years ago its missional work is both central and relevant to today's society, particularly in the areas of:

- (a) **Sustainable development** - agriculture and soil conservation, including the promotion of Vetiver grass which is a low cost, replicable solution to reduce soil erosion and improve crop productivity, and it has other uses that benefit small farmers.
- (b) **Promotion of natural medicines** - including Artemesia Annu for malaria prevention, Hibiscus tea and Moringa to improve health and nutrition. Teaching on the value and use of medicinal plants which are an alternative to conventional medicines.
- (c) **Empowerment of women** - including the work with stoves and energy saving devices. REAP's work with women's church fellowships provides teaching to reduce their daily expenditures.

Rural Extension with Africa's Poor

Report of the Trustees

For the year ended 5 April 2025 (continued)

Trustees' Report (continued)

REAP Kenya continues to promote awareness of the challenges of global climate change and teaching on how to respond appropriately.

We submitted a new project focussing on Women's empowerment and improved Stoves to the Big Give in the first quarter of 2024 and were successful on getting into their programme for 2024/25. This project has started and continued through 2025.

A second application to Big Give for the Vetiver programme was not successful but the work has continued with available funds from the first funds from Big Give.

Trustee efforts continue to try and increase the awareness of REAP's activities and work through various communication channels e.g., newsletters, increased stories / updates through REAP's Facebook page, website development and new options for giving.

During the year Trustee's reviewed REAP's Safeguarding Policy; and continued to operate a lower limit funding policy for operations in Kenya – this ensures that the Trust continues to operate even with low levels of cash.

Finance

The sources of REAP's funding are giving from Churches, Charitable Trusts (which are difficult to predict and depend on applications), and individual giving. In 2024/25 income was £34,093 which was down by £9,707 from the previous year, largely due to the absence of funding via the Big Give. The Trustees are grateful to all who give generously to the ministry of REAP.

During the year REAP UK made grants of £33,871 to REAP Kenya. Less than 2% of income was used to cover administrative and promotional costs. Except for examination (Audit) fees and subscription to 31-8 safeguarding advisors, all the income is applied to operations in Kenya including missionary work, training, natural medicine seminars and up-keep of the Kisumu farm.

REAP "The Trust" does not employ any staff and trustees are not remunerated.

Approved by the trustees on 21 October 2025 and signed on their behalf by:

Stephen Burgess

Stephen Burgess, Chair

Independent Examiner's Report to the Trustees of Rural Extension with Africa's Poor For the year ended 5 April 2025 (continued)

I report on the accounts of Rural Extension with Africa's Poor (the charity) for the year ended 5 April 2025.

Responsibilities and basis of report

As the charity's trustees you are responsible for the preparation of the accounts in accordance with the requirements of the Charities Act 2011 ('the Act').

I report in respect of my examination of the charity's accounts as carried out under section 145 of the Charities Act 2011 ('the 2011 Act'). In carrying out my examination I have followed all the applicable Directions given by the Charity Commission under section 145(5)(b) of the Act.

Independent examiner's statement

I have completed my examination. I confirm that no matters have come to my attention in connection with the examination which gives me cause to believe that, in any material respect:

- accounting records were not kept in accordance with section 130 of the Charities Act; or
- the accounts did not accord with the accounting records; or
- the accounts do not comply with the applicable requirements concerning the form and content of accounts set out in the Charities (Accounts and Reports) Regulations 2008 other than any requirement that the accounts give a 'true and fair' view which is not a matter considered as part of an independent examination.

I have no concerns and have come across no other matters in connection with the examination to which attention should be drawn in this report in order to enable a proper understanding of the accounts to be reached.

SIMON PORTER FCA

Simon Porter FCA
Independent Examiner
120 Woodcote Road, Caversham, Reading RG4 7EZ

Rural Extension with Africa's Poor

Statement of Financial Activities For the year ended 5 April 2025

	Note	2025 £	2024 £
Incoming resources:			
Donations received	2	31,298	40,415
Gift Aid tax receivable		2,795	3,385
Total incoming resources in the period		34,093	43,800
Resources expended:			
In furtherance of the Charity's objectives:			
Grants made	3	33,871	43,689
For management and administration:			
Website		0	0
Governance		202	523
Fees to independent examiner		400	400
Total expenditure in the period		34,473	44,612
Net (outgoing)/incoming resources and net movement in funds in the period		(380)	(812)
Funds brought forward at 5 April 2025 (2024)		16,279	17,091
Funds carried forward at 5 April 2025 (2024)		15,899	16,279

The Notes on page 17 form part of these Accounts

Rural Extension with Africa's Poor

Balance Sheet As at 5 April 2025

Charity registration number 1075121

	Note	2025 £	2024 £
Current assets:			
Debtors	5	2,281	2,238
Bank balance		14,018	14,441
		<u>16,299</u>	<u>16,679</u>
Current liabilities:			
Accruals		400	400
		<u>400</u>	<u>400</u>
Net current assets and net assets		<u>15,899</u>	<u>16,279</u>
Accumulated funds	4	<u>15,899</u>	<u>16,279</u>

These Accounts were approved by the Board of Trustees on 21 October 2025.

Stephen Burgess

Stephen Burgess
Trustee

The Notes on page 17 form part of these Accounts

Rural Extension with Africa's Poor

Notes to the Accounts

As at 5 April 2025

1. Accounting policies

These accounts have been prepared using the following accounting policies:

Donations received are included when they are received, net of tax where appropriate.

Tax received is accrued in the year that the corresponding gift is received.

Income from sales of books and videos is included when it is received.

Interest received is included net of tax when it is received.

	2025 £	2024 £
2. Donations received		
Donations received	<u>31,298</u>	<u>40,415</u>
3. Grants		
Grants made	<u>33,871</u>	<u>43,689</u>
4. Movements in Funds		
Unrestricted funds:		
Balance at start of year	16,279	17,091
Net incoming resources for year	<u>(380)</u>	<u>(812)</u>
Balance at end of year	<u>15,899</u>	<u>16,279</u>
Restricted funds:		
Balance at start of year	0	0
Net incoming resources for year	<u>0</u>	<u>0</u>
Balance at end of year	<u>0</u>	<u>0</u>
Accumulated funds	<u>15,899</u>	<u>16,279</u>
5. Debtors		
Gift Aid recoverable	<u>2,281</u>	<u>2,238</u>
	<u>2,281</u>	<u>2,238</u>

RURAL EXTENSION WITH AFRICA'S POOR

England & Wales - Charity number 1075121

Accounts

Rural Extension with Africa's Poor

**102 Kidmore Road, Caversham,
Reading RG4 7NB**

Charity registration number 1075121

**Report of the Trustees and Accounts
For the year ended 5 April 2024**

Rural Extension with Africa's Poor

Report of the Trustees

For the year ended 5 April 2024

The Trustees present their report and the accounts of the Trust for the year ended 5 April 2024.

Operations Review

Introduction to REAP

REAP (Rural Extension with Africa's Poor) aims to enable those in Africa who do not have ready access to money, especially those in rural areas, to reach their full potential while becoming good stewards of God's creation. This holistic vision seeks to teach them ways to make use of the many local resources available, so that they can maintain their own dignity and become fully functional in supporting their own families, gain fulfilment and contribute positively to the community.



REAP's approach is to work alongside rural families to counter three problems we have identified as within our scope. These are seen as dependency (overcome by teaching and motivating people to do something themselves rather than wait for external aid), the challenges of money and materialism (by providing spiritual motivation and encouraging selfless sharing with others) and environmental concerns (to be met by encouraging the preservation of natural resources and making productive use of locally available materials which otherwise would sometimes be seen as waste).

REAP has developed a wide range of practical ideas that can be introduced with little or no cost to the user and cover every aspect of life. These form the core of REAP's teaching and we continue to be proactive in finding ways to get to more people with this teaching. The proactive work focuses on identifying motivated contact people and the training of trainers and through this we have also added to our portfolio of teaching by drawing on the experience of those we have trained as well as trying new things.

REAP's teaching is refined on an ongoing basis, and teaching aids and planting materials that are appropriate to individual needs are produced, recognising different local customs and climates. The REAP team works with and follows up many contacts, particularly within African churches and para-church organisations, to ensure that their teaching is effective, fully accepted and sustainable. Although much of this follow up continues to be by telephone and other remote means, more in-person visits have again been possible this year.

Overview of the Year

During the year we have been able to significantly expand our proactive work reaching out from our field office located in Kajulu in Kisumu. We have this year significantly expanded our extension work actively promoting the growing of Vetiver Grass for protecting the soil from erosion following a successful appeal for funding. We have continued to run successful Natural Medicine training courses, and towards the end of the reporting period have started to once again become active in stove promotion.

We were able to once again have a stand at the Kisumu Regional Show in July where we showcased the scope of our work. Unfortunately, on the last day of the Show the REAP administrator, Anne Sigei collapsed and died. She has been with REAP since the very beginning and has been a vision holder as well as efficiently running the Nairobi office. She has left a big gap in the organisation, which has greatly affected our work. The Director has had to divert his efforts from the extension work to administration while getting the work at the office running efficiently without Anne's presence.



Ms Anne Sigei at a former Kisumu Show

Rural Extension with Africa's Poor

Report of the Trustees

For the year ended 5 April 2024 continued

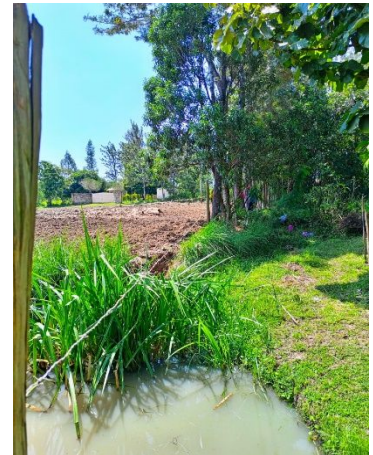
Operations Review (continued)

Use of the REAP plot of land at Kajulu, near Kisumu

The REAP farm near Kisumu continues to be the centre of activity for the field work. We have planted and demonstrate most of the plants and techniques relating to the different aspects of REAP teaching. These can thus be seen by any visitors. We have received a variety of visitors to the farm, including local groups and also those from much wider afield.

We lost a few metres at the end of the farm due to the land being re-surveyed. This was dealt with amicably with the neighbour and we were able to move the fence accordingly and reorganise that end of the farm including the route of the paths that we use when taking visitors round.

Since moving the Kisumu Office to the farm, the building has been the focus of various improvements and is a clean welcoming place for both visitors and also teaching groups. The rural kitchen and the toilets have both been repaired. A caretaker now stays on site, and this has greatly improved the security and thus productivity of the farm.

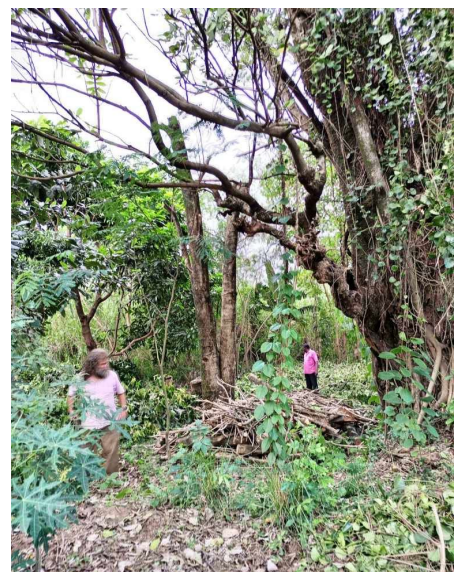


The new boundary fence

During the year effort has been put into reaching out to the local area. In particular our display at the Kisumu Show attracted attention from the local community leaders and has strengthened our relationships locally. In particular, George has been coopted onto a couple of committees dealing with local response to El Nino and wider environmental matters in the immediate area. He has been able to share teaching and insights on the value of Vetiver Grass and Tree Growing as both protective and mitigating measures. Having a caretaker on site has also meant that more local people have been able to visit for information and planting material.

The rainfall has been reasonable, and with the underground water available on farm and the location of the land we have continued to try a wide range of plants including some new to the area. Since the soil is fully protected against erosion the farm is a visible example of what farmers can do using the simple technology of Vetiver grass; this has continued to be a central part of the teaching that we are seeking to extend. The Vetiver Nursery has continued to be a good source of planting material as we take the teaching out further afield. We have been able to plant some Vetiver grass at key points near the roads in the area.

Throughout the plot and round the periphery, trees continue to be a significant part of our management of the area. We continue to harvest trees that have grown to a stage where they impede the crops during this year, so that it has been a source of some charcoal and more firewood from this sustainable source. This teaching of working with the trees that we are encouraging in our extension work is one of the features that many new visitors comment on. As part of our Creation Care teaching, we promote sustainable measures such as FMNR (Farmer Managed Natural Regeneration), coppicing and pollarding. We have examples of these in the trees within the farm.



Harvesting trees for firewood

Rural Extension with Africa's Poor

Report of the Trustees

For the year ended 5 April 2024 continued

Operations Review (continued)



Two of our trainers visiting the farm

We try and have all the main medicinal plants that REAP teaches about represented at the farm. Some are locally familiar and often considered by others as weeds, so we teach their value so that they are no longer seen as weeds but as a useful local resource. All the new medicinal plants that we teach on can be seen growing by any visitors. The farm is also used for multiplying planting material, both from vegetative materials and from seed, for distribution when extending teaching. We continue to give special emphasis in producing enough rooted *Artemisia annua* cuttings for distribution and always have seeds of Roselle (*Hibiscus sabdariffa*), *Cassia alata* and *Moringa oleifera*.

In order that visitors can see as much as possible when they visit, we have established paths around the farm. However, we also have to have drainage channels, so we have to maintain small bridges across these. Most of these have recently been replaced to enable most people to get round. The plants have been well labelled so that they become a resource for learning, including both the local or indigenous species, with local names, and the exotic introduced species. We continue to experiment in a small way with crops that relate to the needs coming from Climate change and continue to gain experience in the use of Green Manure Cover Crops (GMCC) which have assisted us in maintaining organic soil fertility. We have also begun to see extra benefits from Vetiver in mining nutrients that have leached down beyond the reach of most crops and thus producing a valuable mulch.

The home garden area where we practice ideas such as container planting and the keyhole garden continues to show ideas that are particularly relevant for visitors from Kisumu town. This is partly a demonstration of what can be done on very small areas, emphasising ideas relevant for urban farming, but is also a useful source for the kitchen. Visitors often eat food from this garden cooked in our improved local kitchen. The external rural kitchen, which has been fitted out as an operational local kitchen using the fuel saving stoves, and other aspects of teaching included in the REAP extension teaching, has continued to be used and is always a focus on interest for many of our visitors. It is often the place where visitors are first welcomed.



Sam teaching about GMCC

Rural Extension with Africa's Poor

Report of the Trustees

For the year ended 5 April 2024 continued

Operations Review (continued)

Teaching and Training

REAP continues to focus on extending the teaching we have developed into rural communities through both formal seminars and less formal input to local groups. Much local teaching is conducted on the planting, preparation and use of Natural medicines, sometimes covering a range of medicinal plants and sometimes concentrating on specific ones for the needs of a group showing interest. Training is given at different levels according to levels of understand and local needs. The main requests are for training in Natural Medicines and Environmental issues. Sometimes these are combined and sometimes the training is specific.

REAP conducts regular 'Training of Trainers' (TOT) seminars in order to equip people from a range of backgrounds and locations with the knowledge to take to their own work. This reporting year, we have been able to conduct two major one-week seminars on Natural Medicines conducted by REAP staff. In April 2023 we had 21 participants at the international training, representing seven different nationalities and in October 2023 we had 18 participants. We conduct these trainings at Subiaco Centre in Karen on the outskirts of Nairobi where one of our former trainees has established an impressive medicinal garden. The training covers a basic focused curriculum on the growing, processing and use of proven medicinal plants and products.

We continue to emphasise the value of Natural Medicines for general health and from our experience in Natural Medicines for Health we continue to find ways that this can be more easily understood. Our focus upon *Artemisia annua* is seen as particularly relevant. With every seminar we are able to add to our recommendations and expand our teaching.



Photos of training in Subiaco Centre, Karen



Rural Extension with Africa's Poor
Report of the Trustees
For the year ended 5 April 2024 continued

Operations Review (continued)

In November Rev Rosalia conducted an intensive five-day training on Natural Medicines for Sustainable Agriculture Tanzania (SAT) in Morogoro, Tanzania with the help of one of the trainers who we have trained. 13 participants completed the training.



Seminar at Morogoro

Rural Extension with Africa's Poor

Report of the Trustees

For the year ended 5 April 2024 continued

Operations Review (continued)

REAP's proactive work is based on the Kisumu Office and the area within reasonable reach of Kisumu. REAP staff have been invited to conduct non-residential trainings at the local level at various local churches. These include facilitating sessions within conventions and conferences, as well as some days organised specifically for taking the REAP teaching to the church members. REAP facilitated a two day training on Natural Medicines at the Church of Peace in Africa (CPA) Youth in December 2023 and a further two days follow up in January for members of the church as well as five local Community Health Volunteers. Also in January the women's ministry was facilitated with training on Natural Medicines. Teaching was also given to various groups at Evangelical Christ Church in Africa (ECCA) mainly relating to Natural Medicines and Creation Care.

The team has continued to follow up on specific teaching. The team has been following up on many of those who have been for training, and especially those who have been sponsored. Several follow up visits have been made to the Everyday Bible and Discipleship College (EBD) at Kamukuywa to give further practical teaching on the Artemisia planted and to help in the establishment of a herbal clinic there through some of our trainees. REAP Staff were invited as guests for the opening.



Harvesting Artemisia at EBD during a visit

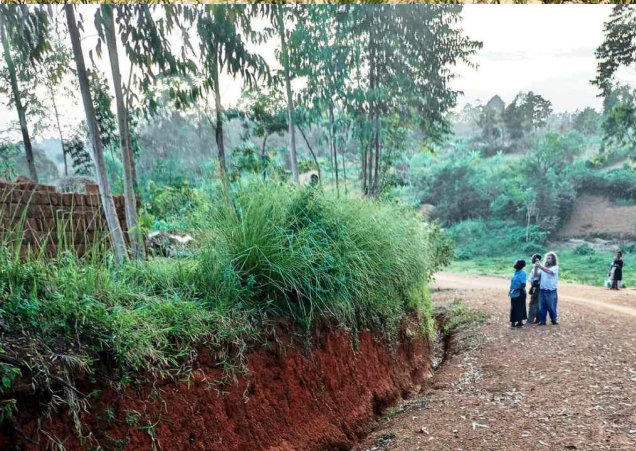
Environmental Teaching

This year in our environmental Creation Care teaching REAP has put particular emphasis on promoting Vetiver Grass as an easily used tool for soil and water conservation and thus care of the environment. We have had Vetiver Grass available from our nursery in Kajulu, but we have focused on proactive extension in four main areas, namely Upper Nyakach, Kajulu and Songhor in Kisumu County and Butere in Kakamega County. In three of these we have a local contact person who is actively promoting the grass and in Kajulu the extension is mainly from the farm.

A number of those we have trained in the past have been using Vetiver Grass for soil conservation, but the programme this year has considerably increased the planting thanks to funding raised through the Big Give matched funding appeal in 2023. Our substantial Vetiver Grass nursery is a local source of planting material, and we have established a new nursery at each of the other centres. The initial emphasis has been on the establishment of a central nursery and then small local Vetiver grass nurseries on farm and on repairing and improving existing hedges. The extension staff have been identifying interested local farmers and as more grass becomes available, they have been working with farmers to establish strategic hedges. We have also been able to share teaching on the value and planting of the grass more widely over the phone or by email, or through local contact people we have trained in the past which has meant spread to some areas that we have not visited.

Rural Extension with Africa's Poor
Report of the Trustees
For the year ended 5 April 2024 continued

Operations Review (continued)



REAP has continued to network with other organisations with an emphasis on Creation Care. We give teaching relating to Creation Care and the Gospel whenever possible, encouraging churches to be responsible stewards in caring for the environment. It is a major topic of discussion for most visitors to our farm and also the Nairobi office. Publicity in the media in relation to climate change and its impact on farming has meant that there is a growing concern at all levels of society, and in response we have been emphasising the Biblical mandate to care for God's creation.

Rural Extension with Africa's Poor

Report of the Trustees

For the year ended 5 April 2024 continued

Operations Review (continued)

Building on years of experience we have practical teaching, and we have become more active in challenging misconceptions and wrong practices. The initiative on Faith Based Tree Growing has been slow but we have had opportunities to share our experience working with churches on a Biblically based approach to motivating church members to care for the environment. The growing awareness that we have witnessed in all the fora we are involved in gives us impetus for continuing to share the message.

Kisumu Show.

This year we have for the first time since before COVID had a stand at the Kisumu Regional Show in July. We were able to use the stand we had used in the past in which we had planted trees and were able to benefit from the ambiance thus created. The building that we had used in the past had been demolished so we decided to use a tent for the main display and to build a purpose-built kitchen of the type common in rural areas but incorporating all our teaching on an improved rural kitchen, including both the efficient hearth and other low-cost improvements.



As soon as we decided to have a stand again Samuel Ouma planted a demonstration Vetiver hedge across the plot and also planted a Vetiver Nursery for practical teaching. In a plot where we already have well established trees this was part of the overall Creation Care message that we shared, and the main technology we emphasised for managing soil and water conservation. Many contacts were made during the show period and as a result grass has been supplied to several interested people outside the main project areas. Others have since come to buy slips direct from the farm.

Rural Extension with Africa's Poor

Report of the Trustees

For the year ended 5 April 2024 (continued)

Operations Review (continued)

We also had an area in which we planted many medicinal plants to show the range of plants that we use and teach about. This was something that attracted a lot of interest and we were also able to display how we prepare and use many of these through a display table within the tent.

Our display attracted a lot of interest, and we were awarded two first place trophies, one second place and two third place. This helped attract more visitors to the stand, and we were able to share information and network through the stand. Unfortunately, we lost our colleague on the last day of the show which greatly affected our ability to follow up on some folks.



The Nairobi Office

The Nairobi office continues to be the communication centre for REAP, and with the resumption of personal contact following the restrictions of the pandemic, we had in the first half of the year once again seen a wide range of visitors including a number from from North America and Europe though most visitors are locally based people seeking information and advice. The loss of Anne, our administrator, had a significant effect on the office in the second half of the year.

It is however still a centre for sharing of ideas more widely and for networking with others interested in what we teach, though some of this sharing we now do electronically. REAP continues to be the local contact organisation and distribution centre for anamed publications and as a result we have continued to have many visitors interested in Natural Medicines, and this has led to some strategic linkages and sharing of ideas and teaching in the wider sphere of REAP's teaching. Our reach has extended far beyond the areas where we are proactive through those that we have trained recently in seminars and other contacts through networking.

We have continued our links with the ECHO regional centre in Arusha, and with CMS-Africa, based in Nairobi. We have welcomed to the Nairobi office several individuals and representatives of NGOs and churches throughout the region who come to discuss ideas, and this enables the spread of REAP teaching much more widely than in the areas where REAP is proactive. We have continued to follow up on contacts working in South Sudan who continue to pass through the Nairobi office for ideas for their work there. Some from other parts of Africa have contacted us via electronic media, particularly in relation to our teaching on Natural Medicines and Creation Care, and we have been able to input into a number of think tanks in relation to sustainable agricultural production and responding practically to the challenges of climate change.

Plans for the Year ahead

In the year ahead we expect to be fully back to the mode of working that we had prior to the pandemic. We have plans to continue with the main messages with a focused emphasis this year on protecting the soil through the use of Vetiver grass, and active promotion of stoves and the improved rural kitchens. We will continue with the four focus areas in western Kenya for much more proactive work on extending Vetiver Grass.

We have booked the location and dates for two international seminars on Natural Medicine and have received requests for other more localised training.

Prepared by Dr Roger Sharland, REAP Director

Rural Extension with Africa's Poor

Report of the Trustees

For the year ended 5 April 2024 (continued)

Trustees' Report

The Trust Rural Extension with Africa's Poor "REAP" is governed by a deed dated 18th March 1999.

The principal objectives of REAP are: -

- a) To support (financially or otherwise) individuals and organisations operating in Africa and being engaged in the relief of poverty, sickness and infirmity in Africa and all forms of need, hardship or distress associated therewith;
- b) To promote and further widen rural development thinking so as better to assist the support of and eventual self-sufficiency of poor local African communities;
- c) To advance and further the religious and other charitable work of local churches in Africa; and
- d) To promote and further educational endeavour in any or all of the above areas.

These objectives are achieved through REAP in Kenya and other similar charitable agencies.

In Kenya REAP provides teaching relating to Creation Care and Natural medicines primarily by encouraging churches to be responsible stewards. REAP also spends significant time teaching women about development in rural kitchens.

Composition of the Trustee Board

During the year the make-up of the Trustee Board was as follows: -

Trustee		Term of office
Judith Deborah Wahinya Glover	Trustee	Three years to 7th December 2026
Philip M Johnson	Chair	One year to 31st October 2024
Stephen Burgess	Secretary	Three years to 31st October 2024
Nicholas Burn	Treasurer	Two years to 30th June 2025

In October 2023:

- Philip M. Johnson agreed to serve a further year to 31st October 2024; and
- Stephen Burgess became Secretary to the Trustee Board and retained responsibility for Safeguarding & Data Protection.

From 7th December 2023 REAP operated with four trustees after Judith Deborah Wahinya Glover joined the Trustee Board.

Operations

The area of REAP's work continues to be Kenya and although REAP was set up some 25 years ago its missional work is both central and relevant to today's society, particularly in the areas of:

- (a) **Sustainable development** - agriculture and soil conservation, including the promotion of Vetiver grass which is a low cost, replicable solution to reduce soil erosion and improve crop productivity, and it has other uses that benefit small farmers.
- (b) **Promotion of natural medicines** - including Artemesia for malaria prevention, Hibiscus tea and Moringa to improve health and nutrition. Teaching on the value and use of medicinal plants which are an alternative to conventional medicines.
- (c) **Empowerment of women** - including the work with stoves and energy saving devices. REAP's work with women's church fellowships provides teaching to reduce their daily expenditures.

Rural Extension with Africa's Poor

Report of the Trustees

For the year ended 5 April 2024 (continued)

Trustees' Report (continued)

REAP Kenya continues to promote awareness of the challenges of global climate change and teaching on how to respond appropriately.

For the first time, in 2023, we applied to the Big Give – <https://biggive.org> - for matched funding against a two-year Vetiver grass project. In April 2023 we reached the target funding level of £12,000. Supporters donated £7,000 and the Big Give provided £5,000. We submitted a stoves project to the Big Give in the last quarter of the 2023-2024 financial year and were successful in getting into their programme for 2024-2025.

Trustee efforts continue to try and increase the awareness of REAP's activities and work through various communication channels e.g., newsletters, increased stories / updates through REAP's Facebook page, website development and new options for giving.

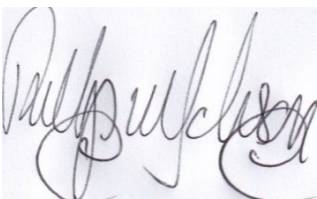
During the year Trustees reviewed REAP's Safeguarding Policy; and continued to operate a lower limit funding policy for operations in Kenya – this ensures that the Trust continues to operate even with low levels of cash.

Finance

The sources of REAP's funding are giving from Churches, Charitable Trusts (which are difficult to predict and depend on applications), and individual giving. In 2023/24 income was £43,800 which was up by £12,858 from the previous year. This increase was primarily due to income received from the Big Give.

During the year REAP UK made grants of £43,689 to REAP Kenya. Less than 2.2% of income was used to cover administrative and promotional costs. Except for examination (Audit) fees all the income is applied to operations in Kenya including missionary work, training, natural medicine seminars, safeguarding and up-keep of the Kisumu farm.

REAP "The Trust" does not employ any staff and trustees are not remunerated.



By order of the Board
Philip M Johnson, Chair
Dated: 11 November 2024

Independent Examiner's Report to the Trustees of Rural Extension with Africa's Poor For the year ended 5 April 2024 (continued)

I report on the accounts of Rural Extension with Africa's Poor (the charity) for the year ended 5 April 2024.

Responsibilities and basis of report

As the charity's trustees you are responsible for the preparation of the accounts in accordance with the requirements of the Charities Act 2011 ('the Act').

I report in respect of my examination of the charity's accounts as carried out under section 145 of the Charities Act 2011 ('the 2011 Act'). In carrying out my examination I have followed all the applicable Directions given by the Charity Commission under section 145(5)(b) of the Act.

Independent examiner's statement

I have completed my examination. I confirm that no matters have come to my attention in connection with the examination which gives me cause to believe that, in any material respect:

- accounting records were not kept in accordance with section 130 of the Charities Act; or
- the accounts did not accord with the accounting records; or
- the accounts do not comply with the applicable requirements concerning the form and content of accounts set out in the Charities (Accounts and Reports) Regulations 2008 other than any requirement that the accounts give a 'true and fair' view which is not a matter considered as part of an independent examination.

I have no concerns and have come across no other matters in connection with the examination to which attention should be drawn in this report in order to enable a proper understanding of the accounts to be reached.



Simon Porter FCA
Independent Examiner
120 Woodcote Road, Caversham, Reading RG4 7EZ

Dated: 11 November 2024

Rural Extension with Africa's Poor

Statement of Financial Activities For the year ended 5 April 2024

	Note	2024 £	2023 £
Incoming resources:			
Donations received	2	40,415	28,769
Gift Aid tax receivable		3,385	2,173
Total incoming resources in the period		43,800	30,942
Resources expended:			
In furtherance of the Charity's objectives:			
Grants made	3	43,689	38,545
For management and administration:			
Website		0	73
Governance		523	54
Fees to independent examiner		400	400
Total expenditure in the period		44,612	39,072
Net (outgoing)/incoming resources and net movement in funds in the period		(812)	(8,130)
Funds brought forward at 5 April 2024 (2023)		17,091	25,221
Funds carried forward at 5 April 2024 (2023)		16,279	17,091

The Notes on page 15 form part of these Accounts

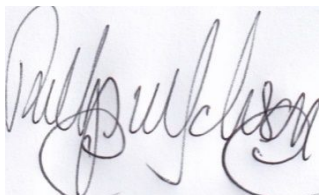
Rural Extension with Africa's Poor

Balance Sheet As at 5 April 2024

Charity registration number 1075121

	Note	2024 £	2023 £
Current assets:			
Debtors	5	2,238	2,168
Bank balance		14,441	15,322
		<u>16,679</u>	<u>17,490</u>
Current liabilities:			
Accruals		400	400
		<u>400</u>	<u>400</u>
Net current assets and net assets		<u>16,279</u>	<u>17,090</u>
Accumulated funds	4	<u>16,279</u>	<u>17,090</u>

These Accounts were approved by the Board of Trustees on 11 November 2024.



Philip M Johnson
Trustee
Dated: 11 November 2024

The Notes on page 15 form part of these Accounts

Rural Extension with Africa's Poor

Notes to the Accounts

As at 5 April 2024

1. Accounting policies

These accounts have been prepared using the following accounting policies:

Donations received are included when they are received, net of tax where appropriate.

Tax received is accrued in the year that the corresponding gift is received.

Income from sales of books and videos is included when it is received.

Interest received is included net of tax when it is received.

	2024 £	2023 £
2. Donations received		
Donations received	<u>40,415</u>	<u>28,769</u>
3. Grants		
Grants made	<u>43,689</u>	<u>38,545</u>
4. Movements in Funds		
Unrestricted funds:		
Balance at start of year	17,091	25,221
Net incoming resources for year	<u>(812)</u>	<u>(8,130)</u>
Balance at end of year	<u>16,279</u>	<u>17,091</u>
Restricted funds:		
Balance at start of year	0	0
Net incoming resources for year	<u>0</u>	<u>0</u>
Balance at end of year	<u>0</u>	<u>0</u>
Accumulated funds	<u>16,279</u>	<u>17,091</u>
5. Debtors		
Gift Aid recoverable	<u>2,238</u>	<u>2,168</u>
	<u>2,238</u>	<u>2,168</u>

RURAL EXTENSION WITH AFRICA'S POOR

England & Wales - Charity number 1075121

Accounts

Rural Extension with Africa's Poor

**102 Kidmore Road, Caversham,
Reading RG4 7NB**

Charity registration number 1075121

**Report of the Trustees and Accounts
For the year ended 5 April 2023**

Rural Extension with Africa's Poor

Report of the Trustees

For the year ended 5 April 2023

The Trustees present their report and the accounts of the Trust for the year ended 5 April 2023.

Operations Review

Introduction to REAP

REAP (Rural Extension with Africa's Poor) aims to enable Africa's poor, especially those in rural areas, to reach their full potential while becoming good stewards of God's creation. This holistic vision seeks to teach them to make use of the many local resources available, so that they can maintain their own dignity and become fully functional in supporting their own families, gain fulfilment and contribute positively to the community. We continue to see many taking up our teaching, uplifted in this way.

REAP's approach is to work alongside the rural poor to counter three problems we have identified as within our scope. These are seen as dependency (overcome by teaching and motivating the poor to do something themselves rather than wait for external aid), the challenges of money and materialism (by providing spiritual motivation and encouraging selfless sharing with others) and environmental concerns (to be met by encouraging the preservation of natural resources and making use of locally available materials which otherwise would be seen as waste).

REAP has developed a wide range of practical ideas that can be introduced with little or no cost to the user and cover every aspect of life. These form the core of REAP's teaching. Our proactive work focuses on identifying motivated contact people and the training of trainers and through this we have also added to our portfolio of teaching by drawing on the experience of those we have trained as well as trying new things.

REAP's teaching is refined on an ongoing basis, and teaching aids and planting materials that are appropriate to individual needs are produced, recognising different local customs and climates. The REAP team works with and follows up many contacts, particularly within African churches and para-church organisations, to ensure that their teaching is effective, fully accepted and sustainable. Although much of this follow up continues to be by telephone and other remote means, more in-person visits have again been possible this year.

During this year we have been able to largely return to the type of work we were involved in before the COVID19 pandemic. Since the pandemic increased the interest in Natural Medicines, we have seen growing interest in the growing of plants that help boost the immune system, and particularly *Artemisia annua*. We continue to build on this interest by having planting material available both from the REAP farm but also from those that we have trained. We have also been able to refine our teaching to be more relevant to maintenance of health through a strong immune system.

The photograph is of Roger and Rosalia at the Artemisia farm in Kamukuywa of the Everyday Bible and Discipleship training centre. Two of the students have attended the Natural Medicine Seminar and they have been very active in taking the teaching to the students and the local community. They had planting material from the seminars they attended and have been conscientious in propagating the plants. In this follow up visit we were able to reinforce the teaching making sure that they get maximum benefit from the learning.



Roger and Rosalia explaining about harvesting Artemesia at Kamukuywa

Rural Extension with Africa's Poor

Report of the Trustees

For the year ended 5 April 2023 continued

Operations Review (continued)

Use of the REAP plot of land at Kajulu, near Kisumu

The REAP farm near Kisumu continues to thrive and the area has not been seriously hit by the drought which has affected some other parts of the country. Most of the plants and techniques relating to the different aspects of REAP teaching can be seen by visitors. Since COVID19 pandemic restricted visits, the team based in Kisumu has had to be more proactive in networking and getting out and visiting contacts this year. This has led once again to more contacts and more visitors to the farm.

Since moving the Kisumu Office to the farm, the building has become more of a focus and some short-term training sessions have taken place at the farm.

During the year more effort has been put into reaching out to the local area and two field days were arranged for local chiefs and other elders in the community. This has led to a number of them returning individually and learning more about the various techniques that we teach.

This practical teaching base is dynamic and new ideas are tried and those that have potential are incorporated into the farm. The rainfall has been reasonable, and with the underground water available on farm and the location of the land we have continued to try a wide range of plants including some new to the area. Since the soil is fully protected against erosion the farm is a visible example of what farmers can do using the simple technology of Vetiver grass to control rainfall runoff and soil erosion; this has continued to be a central part of the teaching that we are seeking to extend. Throughout the plot and round the periphery, trees have been incorporated into the farm in a way that maintains soil fertility and good productive use of a limited plot of land. On the farm some trees had grown to a stage where they impede the crops during this year, so we have thinned and harvested the trees to make some charcoal and sell firewood from this sustainable source. Working with the trees is something that we are encouraging in our extension work and is something that many visitors have commented on. We have included examples of indigenous trees that we have managed with the FMNR (Farmer Managed Natural Regeneration) practices, as well as showing both coppicing and pollarding in the trees within the farm.



Trees in the REAP farm with the Vetiver nursery in the foreground

Rural Extension with Africa's Poor

Report of the Trustees

For the year ended 5 April 2023 continued

Operations Review (continued)

On the farm we grow all the main medicinal plants that REAP teaches about; both locally familiar and new medicinal plants can be seen growing by any visitors. The farm is used for multiplying planting material, both from vegetative materials and from seed, for distribution when extending teaching. We continue to give special emphasis in producing enough rooted *Artemisia annua* cuttings for distribution. As a result, we have always had rooted cuttings available, both locally and occasionally sending them by courier services to other parts of the country.

Two other medicinal plants that we give particular focus to are Roselle (*Hibiscus sabdariffa*) and *Moringa oleifera*.



Rosalia in the Roselle plot

The farm is well labelled so that it becomes a resource for learning, including both the local or indigenous species, with local names, and the exotic introduced species. During the year most of these labels which had deteriorated have been replaced and a few new self-sown indigenous species have been discovered and labeled. With climate change we have experimented with a number of new bean species and have gained experience in the use of Green Manure Cover Crops (GMCC) which have assisted in maintaining organic soil fertility.

Rural Extension with Africa's Poor

Report of the Trustees

For the year ended 5 April 2023 continued

Operations Review (continued)

The home garden area where we practice ideas such as container planting and the keyhole garden has been further developed so that we have ideas on show that are particularly relevant for visitors from Kisumu town. This is partly a demonstration of what can be done on very small areas, emphasising ideas relevant for urban farming, but is also a useful source for the kitchen. Visitors often eat food from this garden cooked in our improved local kitchen. The external rural kitchen, which has been fitted out as an operational local kitchen using the fuel saving stoves, and other aspects of teaching included in the REAP extension teaching, has continued to be used and has been a focus on interest for many of our visitors.

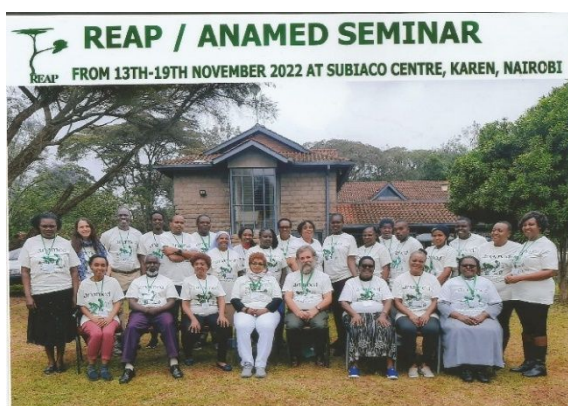


Preparing Prunus africana leaves from prunings at the farm

The farm has been strategically laid out with paths so that visitors can be taken on a route round that plays to their interest. The main areas of interest are natural medicines, care of the soil including Vetiver Grass for erosion control, and general environmental care which we teach as Creation Care. We have planted a few new Vetiver Grass hedges to further protect the soil. The whole garden has an internal logic with a good flow for visitors coming to learn or just to see, and we believe better use of the available resources.

Teaching and training

REAP continues to focus on extending the teaching developed into rural communities through both formal seminars and less formal input to local groups. Much local teaching is conducted on the planting, preparation and use of Natural medicines, sometimes covering a range of medicinal plants and sometimes concentrating on specific ones for the needs of a group showing interest. Training is given at different levels according to levels of understand and local needs.



REAP conducts regular 'Training of Trainers' (TOT) seminars in order to equip people from a range of backgrounds and locations with the knowledge to take to their own work. This reporting year, we have only been able to conduct one major one-week seminar on Natural Medicines conducted by REAP staff. In November 2022 we had 22 participants at the international training, of five different nationalities. We conducted this training at a centre in Karen on the outskirts of Nairobi where one of our former trainees has established an impressive medicinal garden. The training covers a basic focused curriculum on the growing, processing and use of proven medicinal plants and products.

Rural Extension with Africa's Poor
Report of the Trustees
For the year ended 5 April 2023 continued

Operations Review (continued)



Photos of training in Subiaco

We continue to emphasise the value of Natural Medicines for general health and strengthening the immune system, and the COVID-19 pandemic has enabled us to conceptualise our teaching based on principles from our experience in Natural Medicines for Health in a way now more easily understood. Our focus upon *Artemisia annua* is seen as particularly relevant. With every seminar we are able to add to our recommendations and expand our teaching.

In September 2022 Rosalia and George facilitated a week-long seminar on Natural Medicine at Oloitokitok on the foothills of Mount Kilimanjaro with a group called Divinity Foundation. This was attended by about 20 participants.



Seminar at Oloitokitok



Rural Extension with Africa's Poor

Report of the Trustees

For the year ended 5 April 2023 continued

Operations Review (continued)

In March 2023 three of the REAP staff facilitated a five-day seminar for the students of the Africa Inland Church Missionary College in Eldoret. 15 students were trained, and two staff members attended many of the sessions. Although this training covers the range of the teaching we normally give, it has an extra focus on how Natural medicines can facilitate mission outreach in line with the focus of the college.



At a more local level non-residential seminars have been organised by various churches and REAP staff have been able to facilitate with teaching on a range of topics. REAP facilitated a two-day training on Natural Medicines at the Church of Peace in Africa in December 2022 and a further two days follow up in January for 22 members of the church as well as five local Community Health Volunteers.



Seminar at AIC missionary college, Eldoret

REAP's proactive work is based on the Kisumu Office and the area within reasonable reach of Kisumu. REAP staff have been invited to conduct non-residential trainings at the local level at various local churches. These include facilitating sessions within conventions and conferences, as well as some days organised specifically for taking the REAP teaching to the church members.



Participants at women's seminar in ECCA

Rural Extension with Africa's Poor

Report of the Trustees

For the year ended 5 April 2023 continued

Operations Review (continued)

The team has continued to follow up on specific teaching. The team has been following up on many of those who have been for training, and especially those who have been sponsored by their organisations. In particular several follow up visits have been made to the Every Day Bible College at Kamukuywa to give further practical teaching on the Artemisia planted and to help in the establishment of a herbal clinic there through some of our trainees.

One focus we have had in REAP has been on the use of available resources that can be found in rural communities, and each participant responds differently. One of the participants at the seminar was an experienced herbalist who already had many plants. We were able to visit him at his home and he shared with us how he had many of the plants we had been teaching on but had now learnt how to use them more beneficially, and especially what is the science behind what he had observed.



Follow up with Reuben Koech following a seminar

Environmental Teaching



Vetiver Grass planted to protect land by an upgraded road near Butere

REAP has continued to promote Vetiver Grass as an easily used tool for soil and water conservation and thus care of the environment. A number of those we have trained have been teaching their neighbours on its use for soil conservation. Plans are underway for greatly increasing the planting. Our substantial Vetiver Grass nursery is a local source of planting material and slips have been sent to a number of interested organisations by bus. One of our contact pastors has in particular been involved in local teaching sessions and promotes small local Vetiver grass

Although a significant number of farmers are protecting their land with Vetiver grass in the Butere and Mumias areas only recently has he been able to follow up with them following the restrictions of COVID. During COVID travel restrictions we have been able to share teaching on the value and planting of the grass over the phone or through local contact people we have trained in the past. They in turn teach others and the result is the message has spread to some areas that we have not visited.

Rural Extension with Africa's Poor

Report of the Trustees

For the year ended 5 April 2023 continued

Operations Review (continued)

REAP has continued to network with other organisations with an emphasis on Creation Care including in particular A Rocha, Creation Stewards International and CMS Africa. We give teaching relating to Creation Care and the Gospel whenever possible, encouraging churches to be responsible stewards in caring for the environment. It is a major topic of discussion for most visitors to our farm. The growing publicity in the media in relation to climate change and its impact on farming has meant that there is a growing concern at all levels of society, and in response we have been emphasising the Biblical mandate to care for God's creation. Building on years of experience we have developed some more practical teaching, especially challenging misconceptions and wrong practices. The materials we have been working on for the urban church youth on how they can be involved have continued to be refined. A new initiative on Faith Based Tree Growing is moving ahead slowly and we have been actively involved, giving significant input into the strategy based on our years of experience working with churches on a Biblically based approach to motivating church members to care for the environment. The growing awareness that we have witnessed in all the fora we are involved in gives us impetus for continuing to share the message.

One of REAP's partners, is Smejok, who we have trained and interact with regularly and has established very vibrant work in Songhor, on the eastern edge of Kisumu County, and has been very active in sharing our teaching in the area.



A farmers' field day at Songhor emphasising protection of the river bank

Smejok has linked the environmental awareness with Conflict Resolution and peace initiatives through including members of the neighbouring county in all her activities. Although Smejok has taken all our teaching on board, they are particularly active in encouraging the protection of river banks.

The Nairobi Office

The Nairobi office continues to be the communication centre for REAP, and with the resumption of personal contact following the restrictions due to the pandemic, we have once again seen a wide range of visitors including a number from North America and Europe, though most visitors are locally based people seeking information and advice. It is a centre for sharing of ideas more widely and for networking with others interested in what we teach, though some of this sharing we now do electronically. REAP continues to be the local contact organisation and distribution centre for named publications and as a result we have continued to have many visitors interested in Natural Medicines. This has led to some strategic linkages and sharing of ideas and teaching in the wider sphere of REAP's teaching. Our reach has extended far beyond the areas where we are proactive through those that we have trained recently in seminars and other contacts through networking.

Rural Extension with Africa's Poor
Report of the Trustees
For the year ended 5 April 2023 (continued)

Operations Review (continued)

We have continued our links with the ECHO regional centre in Arusha, A Rocha in Watamu and with CMS-Africa, based in Nairobi. We have welcomed to the Nairobi office several individuals and representatives of NGOs and churches throughout the region who come to discuss ideas, and this enables the spread of REAP teaching much more widely than in the areas where REAP is proactive. We have continued to follow up on contacts working in South Sudan who continue to pass through the Nairobi office for ideas for their work there. Some from other parts of Africa have contacted us via electronic media, particularly in relation to our teaching on Natural Medicines and Creation Care, and we have been able to input into a number of think tanks in relation to sustainable agricultural production and responding practically to the challenges of climate change.

Plans for the Year ahead

In the year ahead we expect to be fully back to the mode of working that we had prior to the pandemic and have plans to continue with the main messages with a focused emphasis this year on protecting the soil through the use of Vetiver grass. We have received additional funding through match giving of supporters with a funding organisation to increase the field work for Vetiver promotion. We have identified three focus areas in western Kenya for much more proactive work on extending Vetiver Grass.

We have booked the location and dates for two international seminars on Natural Medicine, and have received requests for other more localised training.

We have plans to once again have a stand at the Kisumu ASK Show, using the same plot that we established and last used in 2019. This plot has well established agroforestry trees so we will use this as the basis of our teaching on Creation Care and more general environmental teaching, as well as showcasing a kitchen and medicinal plants.

Report by: Dr Roger Sharland, REAP Director, November 2023

Rural Extension with Africa's Poor

Report of the Trustees

For the year ended 5 April 2023 (continued)

Trustees' Report

The Trust Rural Extension with Africa's Poor "REAP" is governed by a deed dated 18th March 1999.

The principal objectives of REAP are: -

- a) To support (financially or otherwise) individuals and organisations operating in Africa and being engaged in the relief of poverty, sickness and infirmity in Africa and all forms of need, hardship or distress associated therewith;
- b) To promote and further widen rural development thinking so as better to assist the support of and eventual self-sufficiency of poor local African communities;
- c) To advance and further the religious and other charitable work of local churches in Africa; and
- d) To promote and further educational endeavour in any or all of the above areas.

These objectives are achieved through REAP in Kenya and other similar charitable agencies.

In Kenya REAP provides teaching relating to Creation Care and Natural medicines primarily by encouraging churches to be responsible stewards. REAP also spends significant time teaching women about development in rural kitchens.

Composition of the Trustee Board

During the year the make-up of the Trustee Board was as follows: -

Trustee		Term of office
Hannah Hallett	Secretary	One year to 31 October 2022
Philip M Johnson	Chair	One year to 31st October 2023
Stephen Burgess	Safeguarding and Data Protection	Three years to 31st October 2024
Nicholas Burn	Treasurer	Two years to 30th June 2023

In October 2022:

- Hannah Hallett stood down as a trustee;
- Philip Johnson agreed to serve a further year to 31st October 2023; and
- Stephen Burgess became Secretary to the Trustee Board.

From November 2022 REAP operated with three trustees.

Operations

The area of REAP's work continues to be Kenya with a focus on: -

- (a) **The Environment** - REAP Kenya promotes sustainable agriculture and environment and emphasises working with God's creation. REAP's teaching concentrates on motivating Christians to be responsible stewards of the soil and environment that God has provided through creation;
- (b) **Women in development** – REAP Kenya propagates its teaching through women's church fellowship groups with a specific emphasis on improved rural kitchens including fuel efficient stoves. An initiative which is having a positive impact on climate change; and
- (c) **Natural medicine** - REAP Kenya teaches people how to grow, prepare and use researched and effective Natural Medicines especially Artemisia for Malaria prevention and treatment.

REAP Kenya continues to promote awareness of the challenges of global climate change and teaching on how to respond appropriately.

Rural Extension with Africa's Poor

Report of the Trustees

For the year ended 5 April 2023 (continued)

Trustees' Report (continued)

For the first time in three years, during the summer of 2022, Dr Roger Sharland was able to visit the UK and take part in meetings with Churches and supporters.

Trustee efforts continue to try and increase the awareness of REAP's activities and work through various communication channels e.g., newsletters, increased stories / updates through REAP's Facebook page, website development and new options for giving.

During the year Trustees: -

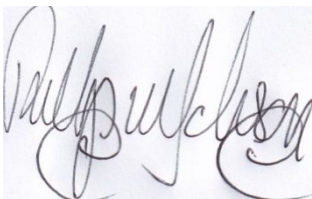
- (a) formalised a short financial scheme of controls and delegations covering all financial transactions or transactions which have monetary implications;
- (b) reviewed REAP's Safeguarding Policy; and
- (c) agreed a lower limit funding policy for operations in Kenya – this ensures that the Trust continues to operate even with low levels of cash.

Finance

The sources of REAP's funding are giving from Churches, Charitable Trusts (which are difficult to predict and depend on applications), and individual giving. In 2022/23 income was £30,942, which was down by £14,660 from the previous year.

During the year REAP UK made grants of £38,545 to REAP Kenya. Less than 1.8% of income was used to cover administrative and promotional costs. Except for examination (Audit) fees, Website costs, and governance (Safeguarding) fees all the income is applied to operations in Kenya which includes missionary work, training, natural medicine seminars, up-keep of the Kisumu farm, etc.

REAP "The Trust" does not employ any staff and trustees are not remunerated.



By order of the Board
Philip M Johnson, Chair
Dated: 20 December 2023

Independent Examiner's Report to the Trustees of Rural Extension with Africa's Poor For the year ended 5 April 2023 (continued)

I report on the accounts of Rural Extension with Africa's Poor (the charity) for the year ended 5 April 2023.

Responsibilities and basis of report

As the charity's trustees you are responsible for the preparation of the accounts in accordance with the requirements of the Charities Act 2011 ('the Act').

I report in respect of my examination of the charity's accounts as carried out under section 145 of the Charities Act 2011 ('the 2011 Act'). In carrying out my examination I have followed all the applicable Directions given by the Charity Commission under section 145(5)(b) of the Act.

Independent examiner's statement

I have completed my examination. I confirm that no matters have come to my attention in connection with the examination which gives me cause to believe that, in any material respect:

- accounting records were not kept in accordance with section 130 of the Charities Act; or
- the accounts did not accord with the accounting records; or
- the accounts do not comply with the applicable requirements concerning the form and content of accounts set out in the Charities (Accounts and Reports) Regulations 2008 other than any requirement that the accounts give a 'true and fair' view which is not a matter considered as part of an independent examination.

I have no concerns and have come across no other matters in connection with the examination to which attention should be drawn in this report in order to enable a proper understanding of the accounts to be reached.



Simon Porter FCA
Independent Examiner
120 Woodcote Road, Caversham, Reading RG4 7EZ

Dated: 20 December 2023

Rural Extension with Africa's Poor

Statement of Financial Activities For the year ended 5 April 2023

	Note	2023 £	2022 £
Incoming resources:			
Donations received	2	28,769	43,193
Gift Aid tax receivable		2,173	2,409
Total incoming resources in the period		30,942	45,602
Resources expended:			
In furtherance of the Charity's objectives:			
Grants made	3	38,545	36,940
For management and administration:			
Website		73	79
Governance		54	0
Fees to independent examiner		400	400
Total expenditure in the period		39,072	37,419
Net (outgoing)/incoming resources and net movement in funds in the period		(8,130)	8,183
Funds brought forward at 5 April 2023 (2022)		25,221	17,038
Funds carried forward at 5 April 2023 (2022)		17,091	25,221

The Notes on page 15 form part of these Accounts

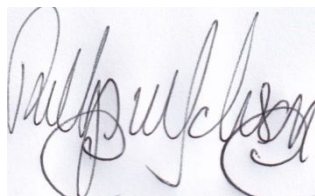
Rural Extension with Africa's Poor

Balance Sheet As at 5 April 2023

Charity registration number 1075121

	Note	2023 £	2022 £
Current assets:			
Debtors	5	2,168	2,409
Bank balance		15,322	23,212
		<u>17,490</u>	<u>25,621</u>
Current liabilities:			
Accruals		400	400
		<u>400</u>	<u>400</u>
Net current assets and net assets		<u>17,090</u>	<u>25,221</u>
Accumulated funds	4	<u>17,090</u>	<u>25,221</u>

These Accounts were approved by the Board of Trustees on 20 December 2023.



Philip M Johnson
Trustee
Dated: 20 December 2023

The Notes on page 15 form part of these Accounts

Rural Extension with Africa's Poor

Notes to the Accounts

As at 5 April 2023

1. Accounting policies

These accounts have been prepared using the following accounting policies:

Donations received are included when they are received, net of tax where appropriate.

Tax received is accrued in the year that the corresponding gift is received.

Income from sales of books and videos is included when it is received.

Interest received is included net of tax when it is received.

	2023 £	2022 £
2. Donations received		
Donations received	<u>28,769</u>	<u>43,193</u>
3. Grants		
Grants made	<u>38,545</u>	<u>36,940</u>
4. Movements in Funds		
Unrestricted funds:		
Balance at start of year	27,153	18,970
Net incoming resources for year	<u>(8,130)</u>	<u>8,183</u>
Balance at end of year	<u>19,023</u>	<u>27,153</u>
Restricted funds:		
Balance at start of year	0	0
Net incoming resources for year	<u>0</u>	<u>0</u>
Balance at end of year	<u>0</u>	<u>0</u>
Accumulated funds	<u>19,023</u>	<u>27,153</u>
5. Debtors		
Gift Aid recoverable	<u>2,168</u>	<u>2,409</u>
	<u>2,168</u>	<u>2,409</u>

RURAL EXTENSION WITH AFRICA'S POOR

England & Wales - Charity number 1075121

Accounts

Rural Extension with Africa's Poor

**102 Kidmore Road, Caversham,
Reading RG4 7NB**

Charity registration number 1075121

**Report of the Trustees and Accounts
For the year ended 5 April 2022**

Rural Extension with Africa's Poor

Report of the Trustees

For the year ended 5 April 2022

The Trustees present their report and the accounts of the Trust for the year ended 5 April 2022.

OPERATIONS REVIEW

Introduction to REAP

REAP (Rural Extension with Africa's Poor) aims to enable Africa's poor, especially those in rural areas, to reach their full potential while becoming good stewards of God's creation. This holistic vision seeks to teach them to make use of the many local resources available, so that they can maintain their own dignity and become fully functional in supporting their own families, gain fulfilment and contribute positively to the community. We continue to see many taking up our teaching, uplifted in this way.

REAP's approach is to work alongside the rural poor to counter what we see as three of the most common problems in Africa. These are seen as dependency (overcome by teaching and motivating the poor to do something themselves rather than wait for external aid), the challenges of money and materialism (by providing spiritual motivation and encouraging selfless sharing with others) and environmental concerns (to be met by encouraging the preservation of natural resources and making use of locally available materials which otherwise would be seen as waste).

REAP has developed a wide range of ideas that can be introduced with little or no cost to the user and cover every aspect of life. These form the core of REAP's teaching. Our proactive work focuses on training of trainers and through this we have also added to our portfolio of teaching by drawing on the experience of those we have trained as well as trying new things.

REAP's teaching is refined on an ongoing basis, and teaching aids and planting materials that are appropriate to individual needs are produced, recognising different local customs and climates. The REAP team works with and follows up many contacts, particularly within African churches and para-church organisations, to ensure that their teaching is effective, fully accepted and sustainable. Much of this follow up continues to be by telephone and other remote means.

The COVID19 pandemic has continued to impact our work in different ways. It has limited travel and limited gathering together. We have responded to this by adapting our way of working, encouraging those that we have trained to reach out into their local areas with the teaching that they have adopted themselves. Since the pandemic has increased the interest in Natural Medicines we have seen growing interest in the growing of plants that help boost the immune system, and particularly Artemisia annua. We continue to respond to this interest by having planting material available both from the REAP farm but also from those that we have trained.

Rural Extension with Africa's Poor

Report of the Trustees

For the year ended 5 April 2022 continued

The photograph is of Isaac Mutai in his Artemisia farm. He attended the Natural Medicine Seminar just before the COVID19 pandemic reached Kenya. He had planting material from the seminars he attended and was conscientious in propagating from the few plants he had, so that he is now able to produce an abundance of dried leaves for use in his home area, and has also distributed rooted cuttings throughout the area.

Use of the REAP plot of land at Kajulu, near Kisumu

The REAP farm near Kisumu continues to thrive. Although the site has continued to develop as a Visitors' and Training Centre, visitors and groups have been fewer than previous years due to COVID19 restrictions. Most of the plants and techniques relating to the different aspects of REAP teaching can be seen. Since the reporting year has been dominated by COVID19 in Kenya and the resulting restrictions, the team based in Kisumu have not been able to get out and visit as they used to, so have focused on work within the farm and where possible they have been open to receive visitors and share with them.



Artemisia on Isaac's farm



Recent trainees visiting the REAP farm

During this year work has been undertaken on the building, with the completing of tiling of the floors and the fixing of internal doors making the building much more conducive for training and enabling its use as the field office. During the year the office in Kisumu town was closed and the function moved to the farm. This practical teaching base is dynamic and new ideas are tried and those that have potential are incorporated into the farm.



Interior of Kajulu building showing tiles and doors

Rural Extension with Africa's Poor

Report of the Trustees

For the year ended 5 April 2022 continued

The rainfall has been moderate, but there is underground water available on farm and the location of the land means a wide range of plants can be grown. Since the soil is fully protected against erosion the farm is a living example of what farmers can do using the simple technology of Vetiver grass; this has continued to be a central part of the teaching. Throughout the plot and round the periphery, trees have been incorporated into the farm in a way that maintains soil fertility and good productive use of a limited plot of land. Since many of the trees have grown to a stage where they impede the crops during this year, we have cut some back to make charcoal and sell firewood. This is a practical example of the teaching of working with the trees that we are encouraging in our extension work.

We have planted the main medicinal plants that REAP teaches about; both locally familiar and new medicinal plants can be seen growing by any visitors. The farm is used for multiplying planting material, both from vegetative materials and from seed, for distribution when extending teaching. With the growing interest in *Artemisia annua* as an immune booster and therefore helpful in the COVID19 pandemic, we have given special emphasis in producing enough rooted cuttings for distribution. As a result, we have always had rooted cuttings available for the local community, and through sending by courier services to other parts of the country.

The plot continues to serve as a place for trying new ideas. We have continued to experiment with the indigenous species of *Artemisia afra* to strengthen what we have already been promoting with *Artemisia Annua*. The farm is well labelled so that it becomes a resource for learning, including both the local or indigenous species, with local names, and the exotic introduced species.



Saw toothed Coriander, one of the new herbs showing promise

We continue to add to the variety of ideas in the home garden area where we practice ideas such as container planting and the keyhole garden which are particularly relevant for visitors from Kisumu town. We have developed this as a demonstration of what can be done on very small areas, emphasising ideas relevant for urban farming. Visitors often eat food from this garden cooked in our improved local kitchen.

Rural Extension with Africa's Poor

Report of the Trustees

For the year ended 5 April 2022 continued



Domitila cooking in Kajulu kitchen

As we have developed our teaching in relation to the value of leguminous trees in the garden, we have also been harvesting those trees that have grown to the stage of being a shade nuisance. This year we have been experimenting successfully with making charcoal from the larger *Leucaena* trees, most of which are self-sown. We are thus encouraging this as a potential source of income particularly in upgrading poor land. We have used local methods of making charcoal and are now looking at a simple kiln for more efficient production.

Teaching and Training

REAP continues to focus on extending the teaching developed into rural communities through both formal seminars and less formal input to local groups. Much local teaching is conducted on the planting, preparation and use of Natural medicines, sometimes covering a range of medicinal plants and sometimes concentrating on specific ones for a group showing interest. Training is given at different levels according to levels of understand and local needs.

The external rural kitchen, which has been fitted out as an operational local kitchen using the fuel saving stoves, and other aspects of teaching included in the REAP extension teaching, has continued to be used and has been a focus on interest for visitors.

We have continued to maintain and improve the paths and routes round the farm for the benefit of visitors while consolidating the production areas. Since the farm has been laid out with paths, visitors can be taken on a route round that plays to their interest. The main areas of interest are natural medicines, care of the soil including Vetiver Grass for erosion control, and for general environmental care which we teach as Creation Care. The whole garden has taken on an internal logic with a good flow for visitors coming to learn or just to see, and we believe better use of the available resources.



Leucaena in the REAP farm

Rural Extension with Africa's Poor

Report of the Trustees

For the year ended 5 April 2022 continued

Teaching and Training (continued)

REAP conducts regular 'Training of Trainers' (TOT) seminars in order to equip people from a range of backgrounds and locations with the knowledge to take to their own work. This reporting year, we have been able to conduct three major one-week seminars on Natural Medicines conducted by REAP staff. In August 2021 we only had 9 participants all from Kenya. In November 2021 we also had 9 participants. In February 2022 we were able to train 12 participants, drawn from four different nationalities. We conducted all these trainings at a centre in Karen on the outskirts of Nairobi where one of our former trainees has established an impressive medicinal garden. The training covers a basic focused curriculum on the growing, processing and use of proven medicinal plants and products.

We have always emphasised the value of Natural Medicines for general health and strengthening the immune system, and since the advent of the COVID-19 pandemic we have been able to conceptualise our teaching based on principles from our experience in Natural Medicines for Health. Our focus upon *Artemisia annua* is seen as particularly relevant, as well as locally available technologies such as hand washing bottles. With every seminar we are able to add to our recommendations and expand our teaching.



Photos of training in Subiaco

At a more local level non residential seminars have been organised by various churches and REAP staff have been able to facilitate with teaching on a range of topics. Two of the REAP staff conducted a five-day seminar in May 2021 for the students of the Africa Inland Church Missionary College in Eldoret. Although this training covers the range of the teaching we normally give, it has an extra focus on how Natural medicines can facilitate mission outreach.



Seminar at AIC missionary college, Eldoret

Rural Extension with Africa's Poor

Report of the Trustees

For the year ended 5 April 2022 continued

Teaching and Training (continued)

REAP's proactive work from the Kisumu Office, now based at the Kajulu farm, and the area within reasonable reach of Kisumu. REAP staff have been invited to conduct non-residential trainings at the local level at various local churches. These include facilitating sessions within conventions and conferences, as well as some days organised specifically for taking the REAP teaching to the church members.

Although it has not been able to make most of the usual visits as in previous years, the team has been able to follow up on specific teaching. The team has been following up on many of those who have been for training, and especially those who have been sponsored. Follow up visits to The AIC Missionary College and the Every Day Bible College at Kamukuywa to give further practical teaching on the Artemisia planted at each college has been particularly significant in enabling these two colleges to have productive plants from which to supply their staff and students and also to continue teaching from.



George with Artemisia at AIC MTC

One focus we have had in REAP has been on the use of available resources that can be found in rural communities. One of the participants from the February 2021 training was Peninah Kairbiru. At the end of each seminar we encourage the participants to identify one idea that has struck them as particularly relevant to their situation. During the reporting year Peninah identified the insulated baskets that we call fireless cookers, and she started training the women of the community-based organisation, Knowledge in Biodiversity Utility Initiatives, that she had founded. The success of her teaching is confirmed in that it featured in a national newspaper in August 2021.



Peninah Kairbiru's teaching on fireless cookers

Rural Extension with Africa's Poor

Report of the Trustees

For the year ended 5 April 2022 continued

Environmental Teaching

Although we have not been able to go out and promote it as actively as we had planned, during this year, REAP has continued to promote Vetiver Grass and a number of those we have trained have been teaching on its use for soil conservation. Our substantial Vetiver Grass nursery is a local source of planting material. One of our contact pastors reports that many local teaching sessions having been conducted and we still promote small local Vetiver grass nurseries. This has had the greatest adoption in the Butere and Mumias areas of Western Kenya, where a significant number of farmers are protecting their land with Vetiver grass. We have however had enquiries from further afield and have been able to send planting materials to various parts of Kenya through courier services, and to share teaching on the value and planting of the grass over the phone or through local contact people we have trained in the past.



Vetiver hedge well planted on a contact's farm

REAP has continued to network with other organisations with an emphasis on Creation Care. We give teaching relating to Creation Care and the Gospel whenever possible, encouraging churches to be responsible stewards in caring for the environment. We have responded to the growing publicity in the media in relation to climate change and its impact on farming by emphasising the Biblical mandate to care for God's creation, and by developing more practical teaching. We have improved some materials we have been working on for the urban church youth on how they can be involved. We have been actively involved in a new initiative on Faith Based Tree Growing, giving significant input into the strategy based on our years of experience working with churches on a Biblically based approach to motivating church members to care for the environment. Although this initiative is still at an early stage, we see it as something we have already had a significant input to.



REAP representatives at Kenya Faith Based Tree Growing Round Table meeting

Rural Extension with Africa's Poor

Report of the Trustees

For the year ended 5 April 2022 continued

The Nairobi Office

The Nairobi office continues to be the communication centre for REAP, and with the opening of international travel we have again started to receive a number of overseas visitors from North America and Europe as well as locally based people seeking information and advice. It is a centre for sharing of ideas more widely and for networking with others interested in what we teach, though much of this sharing we now do electronically. REAP continues to be the local contact organisation and distribution centre for “anamed” publications and as a result we have continued to have many visitors interested in Natural Medicines. This has led to some strategic linkages and sharing of ideas and teaching in the wider sphere of REAP’s teaching.

We have continued our links with the ECHO regional centre in Arusha, and with CMS- Africa, based in Nairobi as well as Creation Stewards International (CSAI) and AROCA Kenya. We have welcomed to the Nairobi office several individuals and representatives of NGOs and churches throughout the region who come to discuss ideas, and this enables the spread of REAP teaching much more widely than in the areas where REAP is proactive. We have continued to follow up on contacts working in South Sudan who continue to pass through the Nairobi office for ideas for their work there but have not had visitors from the wider region. From many other parts of Africa we have been contacted us via electronic media, particularly in relation to our teaching on Natural Medicines and Creation Care, and we have been able to input a number of think tanks in relation to sustainable agricultural production and responding practically to the challenges of climate change.

Plans for 2022/23

Having been severely restricted by Covid19 in 2021 we will be building on the foundations already laid and increase outreach. We will run two international Natural Medicine seminars, and several local training seminars with like-minded organisations that we partner with.

We will increase our networking on creation care, with particular emphasis on tree growing and continuing to promote the use of Vetiver Grass for soil and water conservation.

We will start reaching out again with the improved rural kitchens and stoves.

At the REAP farm we will improve the visitor experience through further planting and signage and reach out to encourage more groups and visitors.

Dr Roger Sharland
REAP Director

Rural Extension with Africa's Poor

Report of the Trustees

For the year ended 5 April 2022 continued

TRUSTEES' REPORT

The Trust, Rural Extension with Africa’s Poor REAP “REAP UK” is governed by a deed dated 18th March 1999.

The principal objectives of REAP are: -

- a) To support (financially or otherwise) individuals and organisations operating in Africa and being engaged in the relief of poverty, sickness and infirmity in Africa and all forms of need, hardship or distress associated therewith;
- b) To promote and further widen rural development thinking so as better to assist the support of and eventual self-sufficiency of poor local African communities;
- c) To advance and further the religious and other charitable work of local churches in Africa; and
- d) To promote and further educational endeavour in any or all of the above areas.

These objectives are achieved through REAP Kenya and other similar charitable agencies. REAP Kenya continues to give teaching relating to Creation Care and Natural medicines encouraging churches to be responsible stewards.

Composition of the Trustee Board

The make up of the Trustee Board is as follows:

Trustee	Role	Term of office
Stephen Burgess	Safeguarding and Data Protection	Three years to 31 October 2024
Nicholas Burn	Treasurer from 1 Nov 2021	Two years to 30 June 2023
Paul Fountain	Trustee	Three years to 31 October 2021
Hannah Hallett	Secretary	One year to 31 October 2022
Michael Hallett	Treasurer	Three years to 31 October 2021
Philip M Johnson	Chair	Two years to 31 October 2022

In 2021-22 Hannah Hallett was reappointed as a trustee for a further year. Mike Hallett and Paul Fountain stood down as trustees and Nick Burn joined the trustee board in June 2021.

Operations

The area of REAP’s work continues to be Kenya with a focus on: -

- (a) the Environment - REAP Kenya promotes sustainable agriculture and environment and emphasises working with God's creation. REAP’s teaching concentrates on motivating Christians to be responsible stewards of the soil and environment that God has provided through creation;
- (b) Women in development – REAP Kenya propagates its teaching through women’s church fellowship groups with a specific emphasis on improved rural kitchens including fuel efficient stoves. An initiative which is having a positive impact on climate change; and
- (c) Natural medicine - REAP Kenya teaches people how to grow, prepare and use researched and effective Natural Medicines especially Artemisia for Malaria prevention and treatment.

Rural Extension with Africa's Poor

Report of the Trustees

For the year ended 5 April 2022 (continued)

Operations (continued)

REAP Kenya continues to promote awareness of the challenges of global climate change and teaching on how to respond appropriately.

Like all Charities REAP continued to feel the impact of Covid 19 during 2021-22. All Trustee Board meetings were held online via Zoom. Dr Roger Sharland was unable to visit the UK for the second year running.

Trustee efforts continue to try and increase the awareness of REAP's activities and work through various communication channels e.g., newsletters, increased stories / updates through REAP's Facebook page, website development and new options for giving.

The Fund-Raising Consultant we appointed in 2020-21 finished their activities early in 2021-22. Following the work of the Fund-Raising Consultant and Dr Roger Sharland REAP received a grant of £5,000 from one of the funding agencies that it had approached.

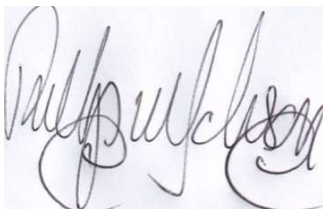
During the year we ran a recruitment campaign for new trustees. This campaign resulted in the appointment of Nick Burn with an initial appointment of two-year duration. Nick Burn took up the role of treasurer when Mike Hallett stood down as a trustee.

Finance

The sources of REAP's funding are giving from Churches, Charitable Trusts (which are difficult to predict and depend on applications), and individual giving. In 2021/22 income was £45,602 which was up by £11,949 from the previous year, despite some organisations choosing not to fund REAP and the general turn down in charity funding due to Covid 19.

During the year REAP UK made grants of £36,940 to REAP Kenya. Less than 1.1% of income was used to cover administrative and promotional costs, which represented a decrease from the previous year due to the completion of the work of the Fund-Raising Consultant. Except for examination fees (Audit) all the income is applied to operations in Kenya which includes missionary work, training, natural medicine seminars, up-keep of the Kisumu farm, etc.

The trust does not employ any staff and trustees are not remunerated.



By order of the Board
Philip M Johnson, Chair
Dated: 22 December 2022

Independent Examiner's Report to the Trustees of Rural Extension with Africa's Poor

I report on the accounts of the charity for the year ended 5 April 2022 which are set out on pages twelve to fourteen.

Respective responsibilities of trustees and examiner

The charity's trustees are responsible for the preparation of the accounts. The trustees consider that an audit is not required for this year (under section 144(2) of the Charities Act 2011 (the 2011 Act) and that an independent examination is needed.

Having satisfied myself that the charity is not subject to audit and is eligible for independent examination, it is my responsibility to:

- examine the accounts under section 145 of the 2011 Act;
- to follow the procedures laid down in the general Directions given by the Charity Commission under section 145(5)(b) of the 2011 Act; and
- to state whether particular matters have come to my attention.

Basis of independent examiner's report

My examination was carried out in accordance with the general Directions given by the Charity Commission. An examination includes a review of the accounting records kept by the charity and a comparison of the accounts presented with those records. It also includes consideration of any unusual items or disclosures in the accounts, and seeking explanations from you as trustees concerning any such matters. The procedures undertaken do not provide all the evidence that would be required in an audit, and consequently no opinion is given as to whether the accounts present a 'true and fair view' and the report is limited to those matters set out in the statement below.

Independent examiner's statement

I have completed my examination. I confirm that no material matters have come to my attention in connection with the examination which gives me cause to believe that in, any material respect:

- the accounting records were not kept in accordance with section 130 of the Charities Act; or
- the accounts did not accord with the accounting records; or
- the accounts did not comply with the applicable requirements concerning the form and content of accounts set out in the Charities (Accounts and Reports) Regulations 2008 other than any requirement that the accounts give a 'true and fair' view which is not a matter considered as part of an independent examination.

I have no concerns and have come across no other matters in connection with the examination to which attention should be drawn in this report in order to enable a proper understanding of the accounts to be reached.



Simon Porter FCA
Independent Examiner
120 Woodcote Road, Caversham, Reading RG4 7EZ

Dated: 22 December 2022

Rural Extension with Africa's Poor

Statement of Financial Activities For the year ended 5 April 2022

	Note	2022 £	2021 £
Incoming resources:			
Donations received	2	43,193	31,941
Gift Aid tax receivable		2,409	1,712
Total incoming resources in the period		45,602	33,653
Resources expended:			
In furtherance of the Charity's objectives:			
Grants made	3	36,940	32,996
For management and administration:			
Website		79	14
Fundraising		0	1,600
Fees to independent examiner		400	100
Total expenditure in the period		37,419	34,710
Net (outgoing)/incoming resources and net movement in funds in the period		8,183	(1,057)
Funds brought forward at 5 April 2021 (2020)		17,038	18,095
Funds carried forward at 5 April 2022 (2021)		25,221	17,038

The Notes on page 14 form part of these Accounts

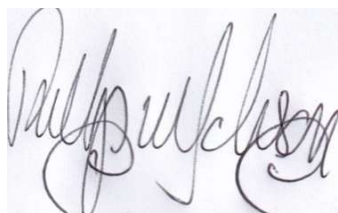
Rural Extension with Africa's Poor

Balance Sheet As at 5 April 2022

Charity registration number 1075121

	Note	2022 £	2021 £
Current assets:			
Debtors	5	2,409	1,712
Bank balance		23,212	16,026
		<u>25,621</u>	<u>17,738</u>
Current liabilities:			
Accruals		400	700
		<u>400</u>	<u>700</u>
Net current assets and net assets		<u>25,221</u>	<u>17,038</u>
Accumulated funds	3	<u>25,221</u>	<u>17,038</u>

These Accounts were approved by the Board of Trustees on 22 December 2022.



Philip M Johnson
Trustee
Dated: 22 December 2022

The Notes on page 14 form part of these Accounts

Rural Extension with Africa's Poor

Notes to the Accounts

As at 5 April 2022

1. Accounting policies

These accounts have been prepared using the following accounting policies:

Donations received are included when they are received, net of tax where appropriate.

Tax received is accrued in the year that the corresponding gift is received.

Income from sales of books and videos is included when it is received.

Interest received is included net of tax when it is received.

	2022	2021
	£	£
2. Donations received		
Donations received	<u>43,193</u>	<u>31,941</u>
3. Grants		
Grants made	<u>36,940</u>	<u>32,996</u>
4. Movements in Funds		
Unrestricted funds:		
Balance at start of year	17,038	18,095
Net incoming resources for year	<u>8,183</u>	<u>(1,057)</u>
Balance at end of year	<u>25,221</u>	<u>17,038</u>
Restricted funds:		
Balance at start of year	0	0
Net incoming resources for year	<u>0</u>	<u>0</u>
Balance at end of year	<u>0</u>	<u>0</u>
Accumulated funds	<u>25,221</u>	<u>17,038</u>
5. Debtors		
Gift Aid recoverable	<u>2,409</u>	<u>1,712</u>
	<u>2,409</u>	<u>1,712</u>

RURAL EXTENSION WITH AFRICA'S POOR

England & Wales - Charity number 1075121

Accounts

Rural Extension with Africa's Poor

**40 Dragonfly Close
Frome BA11 5BX**

Charity registration number 1075121

**Report of the Trustees and Accounts
For the year ended 5 April 2021**

Rural Extension with Africa's Poor

Report of the Trustees

For the year ended 5 April 2021

The Trustees present their report and the accounts of the Trust for the year ended 5 April 2021.

OPERATIONS REVIEW

Introduction to REAP

REAP (Rural Extension with Africa's Poor) aims to enable Africa's poor, especially those in rural areas, to reach their full potential and become good stewards of God's creation. This holistic vision seeks to teach them to make use of the many local resources available, so that they can maintain their own dignity and become fully functional in supporting their own families, gain fulfilment and contribute positively to the community. We continue to see many taking up our teaching, uplifted in this way.

REAP's approach is to work alongside the rural poor to counter three of the most common problems that we have identified as facing development in Africa. These are seen as dependency (overcome by teaching and motivating the poor to do something themselves rather than wait for external aid), the challenges of money and materialism (by providing spiritual motivation and encouraging selfless sharing with others) and environmental concerns (to be met by encouraging the conservation of natural resources and making use of locally available materials which otherwise would be seen as waste).

REAP has developed a wide range of ideas that can be introduced with little or no cost to the user and cover every aspect of life. These form the core of REAP's teaching. Our proactive work focuses on training of trainers and through this we have also added to our portfolio of teaching by drawing on the experience of those we have trained as well as trying new things.

REAP's teaching is refined on an ongoing basis; teaching aids and planting materials that are appropriate to individual needs are produced, taking into account different local customs and climates. The team works with and follows up many contacts, particularly within African churches and para-church organisations, to ensure that their teaching is effective, fully accepted and sustainable. Much of this follow up has recently been by telephone and other remote means due to restrictions caused by Covid 19.

The COVID19 pandemic has of course affected our work. It has limited travel and gathering together. We have responded to this by adapting our way of working, and in particular encouraging those that we have trained to reach out into their local areas with the teaching that they see as relevant. The pandemic has also increased the interest in Natural Medicines and in particular we have seen growing interest in the growing of Artemisia. We have been able to respond to this interest by having more planting material available both from the REAP farm but also from those that we have trained.

Rural Extension with Africa's Poor

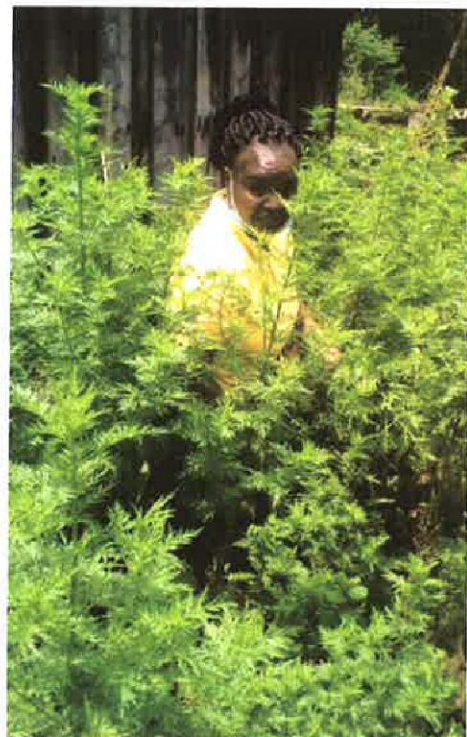
Report of the Trustees

For the year ended 5 April 2021 continued

The photograph is of Marietta Musila amongst her Artemisia plants. She attended the Natural Medicine Seminar in March 2020 and during the lockdown was on her upcountry farm in Embu. She had taken planting material from the seminar and during the lockdown planted, cared for and propagated her Artemisia. She has since shared planting materials with many neighbours, and we have been able to put others enquiring from that area in touch with her for planting materials.

Use of the REAP plot of land at Kajulu, near Kisumu

The REAP farm near Kisumu continues to thrive. Most of the plants and techniques relating to the different aspects of REAP teaching can be seen. The reporting year coincided with the start of COVID19 spreading in Kenya and the resulting lockdown and other restrictions. As a result, the team based in Kisumu have not been able to get out and visit so have focused on work within the farm and have been open to receive visitors and share with them. The number of visitors has been much lower than in previous years.



Artemisia on Marietta's farm



This practical teaching base is dynamic and new ideas are tried and those that have potential are incorporated into the farm. The farm has received reliable rainfall and the location of the land means a wide range of plants can be grown. Since the soil is fully protected against erosion the farm is a living example of what farmers can do using the simple technology of Vetiver grass to prevent soil erosion; this has continued to be a central part of the teaching.

Throughout the plot and round the periphery (photo above) trees have been incorporated into the farm in a way that maintains soil fertility and good productive use of a limited plot of land. This is a significant focus for teaching and through our own management this year we have been able to refine our teaching and make it more focused and relevant.

We have planted the main medicinal plants that REAP teaches about and both locally familiar and new medicinal plants can be seen growing by any visitors. The farm is used for multiplying planting material, both from vegetative materials and from seed, for distribution when extending teaching. This year there has been particular interest in Artemisia annua as it is an immune booster and therefore helpful in the COVID19 pandemic. As a result, we have always had rooted cuttings available for distribution, both locally and through sending by courier services to other parts of the country.

Rural Extension with Africa's Poor

Report of the Trustees

For the year ended 5 April 2021 continued

The plot continues to serve as a place for trying new ideas. Although we particularly continue to focus on and encourage the planting of *Artemisia annua* we have been experimenting with the indigenous species of *Artemisia afra* to strengthen what we have already been promoting. The farm is well labelled so that it becomes a resource for learning, including both the local or indigenous species, with local names, and the exotic introduced species. Although we have continued to have some local visitors throughout the year, we have not been able to host groups due to the COVID19 restrictions.



REAP kitchen

We continue to add to the variety of ideas in the home garden area where we practice ideas such as container planting and the keyhole garden which are particularly relevant for visitors from Kisumu town. We have developed this as a demonstration of what can be done on very small areas, emphasising ideas relevant for urban farming. Visitors often eat food from this garden cooked in our improved local kitchen.

Although the site has continued to develop as a Visitors' and Training Centre, visitors have been few. The external rural kitchen, which has been fitted out as an operational local kitchen using the fuel saving stoves, and other aspects of teaching included in the REAP extension teaching, has continued to be used and has been a focus on interest for visitors.

We have continued to maintain and improve the paths and routes round the farm for the benefit of visitors while consolidating the production areas. Since the farm has been laid out with paths, visitors can be taken on a route round that plays to their interest. The main areas of interest are natural medicines, care of the soil including Vetiver Grass for erosion control, and for general environmental care which we teach as Creation Care. The whole garden has taken on an internal logic with a good flow for visitors coming to learn or just to see, and we believe better use of the available resources.

As we have developed our teaching in relation to the value of leguminous trees in the garden, we have also been harvesting those trees that have grown to the stage of being a nuisance. This year we have been experimenting successfully with making charcoal from the larger *Leucaena* trees, most of which are self sown and have been left until the shade becomes a problem. We are thus encouraging the planting of *Leucaena* for improving the fertility of the land, for soil conservation, for animal fodder and when thinning the excess can be used for charcoal making. We have used local methods of making charcoal and are now looking at a simple kiln for more efficient production.

Leucaena trees on the farm, ready for harvest



Rural Extension with Africa's Poor

Report of the Trustees

For the year ended 5 April 2021 continued

Teaching and Training

REAP continues to focus on extending the teaching developed into rural communities through both formal seminars and less formal input to local groups. Much local teaching is conducted on the planting, preparation and use of Natural medicines, sometimes covering a range of medicinal plants and sometimes concentrating on specific ones for a group showing interest. Training is given at different levels according to levels of understand and local needs.

REAP normally conducts regular training of trainers' seminars in order to equip people from a range of backgrounds and locations with the knowledge to take to their own work. This reporting year, because of the limitations of COVID19, we have only had one major one-week seminars on Natural Medicines conducted by REAP staff. In February 2021 we had 18 participants from 4 nationalities, though all living within Kenya. We conducted this training at a centre in Karen on the outskirts of Nairobi where one of our former trainees has established an impressive medicinal garden. The training covers a basic focused curriculum on the growing, processing and use of proven medicinal plants and products.

By March 2020 Covid19 had reached Kenya, so we were able to start discussions on how the teaching we have been giving relates to the pandemic. We have always emphasised the value of Natural Medicines for general health and strengthening the immune system, and this has been the basis of our specific response to the pandemic. In this respect our focus upon *Artemisia annua* is seen as particularly relevant, as well as locally available technologies. We developed the thinking further during the February 2021 seminar.



Training seminar in Subiaco

Rural Extension with Africa's Poor

Report of the Trustees

For the year ended 5 April 2021 continued

At a more local level non residential seminars have been organised by various churches and REAP staff have been able to facilitate with teaching on a range of topics. Two of the REAP staff conducted a five-day seminar in March 2021 for the students of the Africa Inland Church Missionary College. This training covers the range of teaching we normally give, but with an extra focus on how Natural medicines can facilitate mission outreach.



Seminar at AIC missionary college, Eldoret

One focus we have had in REAP has been on the use of available resources that can be found in rural communities. We have for a number of years included teaching on making the tippy tap and the hand washing bottle. When the news of Covid19 reached Kenya one of the main messages was the importance of hand washing. It was therefore very encouraging when many of those whom we have trained spontaneously started actively teaching on the making and use of the tippy tap. We have had many reports of how people responded in the first few weeks of the pandemic to this teaching, and it continues to be shared.



Teaching on Tippy Tap

Rural Extension with Africa's Poor

Report of the Trustees

For the year ended 5 April 2021 continued

REAP's proactive work is based on the Kisumu Office and the area within reasonable reach of Kisumu. REAP staff have been invited to conduct non-residential trainings for three organisations in the western part of Kenya. Two training visits have been made to SOFDI (Sustainable Organic Farming Development Initiative), and two at the Every Day Bible College at Kamukuywa. Another NGO has made use of our farm for their own training facilitated by our staff.

Environmental Teaching

Although we have not been able to go out and promote it as actively as we had planned, during this year, REAP has continued to promote Vetiver Grass and a number of those we have trained have been teaching on its use for soil conservation. Our substantial Vetiver Grass nursery is a local source of planting material. We have received reports of local teaching sessions having been conducted in other places and we still promote small local Vetiver grass nurseries. Although the main emphasis has been in the Butere and Mumias areas of Western Kenya, where a significant number of farmers protecting their land with Vetiver grass, we have had enquiries from further afield and have been able to send planting materials to various parts of Kenya through courier services, even during the period of lockdown.

REAP has continued to network with other organisation on Creation Care. We give teaching relating to Creation Care and the Gospel whenever possible, encouraging churches to be responsible stewards in caring for the environment. We have responded to the growing publicity in the media in relation to climate change and its impact on farming by emphasising the Biblical mandate to care for God's creation, and by developing more practical teaching. In particular we have been working on some materials for the urban church youth on how they can be involved. Although for some of them our teaching on tree planting and soil conservation is relevant, for many in the urban context it is not. So we have focused on the use of water, fuel, power etc. and how this relates to the wider environment. We also teach on the management of waste.

The Nairobi Office

The Nairobi office continues to be the communication centre for REAP. It is a centre for sharing of ideas more widely and for networking with others interested in what we teach within Kenya, East Africa and internationally. REAP is the local contact organisation and distribution centre for named publications and as a result we have continued to have many visitors interested in Natural Medicines, and this has led to some strategic linkages and sharing of ideas and teaching in the wider sphere of REAP's teaching. We have also continued our links with ECHO, which has their regional centre in Arusha, and with CMS-Africa, based in Nairobi. The REAP Nairobi office is also a place where individuals and representatives of NGOs and churches throughout the region come to discuss ideas, and this enables the spread of REAP teaching much more widely than in the areas where REAP is proactive. We have continued to follow up on contacts working in South Sudan who continue to pass through the Nairobi office for ideas for their work there but have not had visitors from the wider region. A few from other parts of Africa have contacted us via electronic media, particularly in relation to our teaching on Natural Medicines and Creation Care.

Rural Extension with Africa's Poor

Report of the Trustees

For the year ended 5 April 2021 continued

Proposed activities and focus for next year

With the COVID19 pandemic we have had increasing interest in the growing and use of Artemisia. We have thus focused on increasing the amount planted, as well as teaching more widely on its use as an immune booster. This means we are encouraging those we have trained to propagate the plants and share them in their communities. All the Artemisia we grow is propagated from cuttings so remains true to type, and we are committed to following up on those we have trained.

We also have three six day Natural Medicine training seminars planned for the year, and are available for more localised training.

With the growing awareness of the impacts of climate change we have two main emphases in our training on sustainable agriculture and creation care. We have long been promoting responsible care for the soil for sustainable production, and with more unreliable rainfall this is part of our response to climate change as it has the advantage of preventing the soil drying out so quickly and thus makes better use of the rain when it falls. We also promote crops including trees which can benefit from the rain whenever it falls rather than those crops that are very sensitive to timely rainfall.

We also teach on responsible practices that reduce CO2 emissions or help capture it. and thus help mitigate against climate change especially at the local level. As well as care for the soil, we teach on the value of trees both in the general environment and on the farm, and our improved kitchen programme is geared to sustainable use of fuel wood through more efficient stoves and kitchens.

Dr Roger Sharland
REAP Director

Rural Extension with Africa's Poor

Report of the Trustees

For the year ended 5 April 2021 continued

TRUSTEES' REPORT

The Trust, Rural Extension with Africa's Poor REAP "REAP UK" is governed by a deed dated 18th March 1999. The principal objectives of REAP are:-

- a) To support (financially or otherwise) individuals and organisations operating in Africa and being engaged in the relief of poverty, sickness and infirmity in Africa and all forms of need, hardship or distress associated therewith;
- b) To promote and further widen rural development thinking so as better to assist the support of and eventual self-sufficiency of poor local African communities;
- c) To advance and further the religious and other charitable work of local churches in Africa; and
- d) To promote and further educational endeavour in any or all of the above areas.

Achieving these objectives involves the support of the work of REAP Kenya and other similar charitable agencies. REAP Kenya continues to give teaching relating to Creation Care, Natural medicines and the Gospel, encouraging churches to be responsible stewards in caring for the environment. It also continues to promote awareness of the challenges of climate change and teaching on how to respond appropriately.

Composition of the Trustee Board

The make up of the Trustee Board is as follows:

Trustee	Role	Term of office
Stephen Burgess	Safeguarding and Data Protection	Three years to 31 October 2021
Paul Fountain	Trustee	Three years to 31 October 2021
Hannah Hallett	Secretary	Three years to 31 October 2021
Michael Hallett	Treasurer	Three years to 31 October 2021
Philip M Johnson	Chair	Two years to 31 October 2022

After many years' service, Paul Fountain is due to step down in October 2021. In January we launched a recruitment campaign for two new Trustees, who we hope to appoint in the new financial year.

Operations

Like all Charities REAP was impacted by Covid 19. Dr Roger Sharland was unable to visit the UK so in June we organised an online meeting of supporters. This was well attended, and we believe a first for REAP.

During the year Trustees reviewed REAP's safeguarding policy and produced a new suite of policy guidance for safeguarding with a summary of REAP's policy posted on the website see:- reap-eastafrica.org/wp-content/uploads/2021/07/Safeguarding-Policy-summary-July-2021.pdf

Efforts are continuing to increase awareness of REAP's activities and good work in a cost-effective manner (e.g., via newsletters, increased stories / updates through REAP's Facebook page, website development and new options for giving). Trustees hope regular giving will increase in the longer run, as this will provide the charity with some predictability that helps underpin its operations.

Rural Extension with Africa's Poor

Report of the Trustees

For the year ended 5 April 2021 (continued)

Towards the end of the year, we retained the services of a Fund-Raising Consultant to help us apply for grants. Initially we worked with the consultant to prepare a target list of grant awarding agencies that fit with REAP's ethos and objectives. Up to 5th April 2021 we had prepared and submitted 13 applications to grant making agencies. These submissions were well received but we had no positive responses. Several responses were negative as there is a good deal of competition for grant funding. We continued to monitor the remaining applications that we submitted as well as preparing and submitting new applications.

Financial Summary

The sources of REAP's funding are giving from organisations, Charitable Trusts (which are somewhat hard to predict in nature), and individual giving which is of growing importance. In 2020/21 income was £33,653 which was down by £13,712 from the previous year mainly due to some organisations choosing not to fund REAP and the general turn down in charity funding due to Covid 19.

During the year REAP UK made grants of £32,996 to REAP Kenya. Less than 5.1% of income was used to cover administrative and promotional costs. An increase from the previous year due to the retention of the Fund-Raising Consultant. But most income is applied to operations in Kenya – including missionary work, training, natural medicine seminars, up-keep of the Kisumu farm, etc. Trustees are not remunerated.



By order of the Board
Philip M Johnson, Chair
Dated: 9 January 2022

Independent Examiner's Report to the Trustees of Rural Extension with Africa's Poor

I report on the accounts of the charity for the year ended 5 April 2021 which are set out on pages eleven to thirteen.

Respective responsibilities of trustees and examiner

The charity's trustees are responsible for the preparation of the accounts. The trustees consider that an audit is not required for this year (under section 144(2) of the Charities Act 2011 (the 2011 Act) and that an independent examination is needed.

Having satisfied myself that the charity is not subject to audit and is eligible for independent examination, it is my responsibility to:

- examine the accounts under section 145 of the 2011 Act;
- to follow the procedures laid down in the general Directions given by the Charity Commission under section 145(5)(b) of the 2011 Act; and
- to state whether particular matters have come to my attention.

Basis of independent examiner's report

My examination was carried out in accordance with the general Directions given by the Charity Commission. An examination includes a review of the accounting records kept by the charity and a comparison of the accounts presented with those records. It also includes consideration of any unusual items or disclosures in the accounts, and seeking explanations from you as trustees concerning any such matters. The procedures undertaken do not provide all the evidence that would be required in an audit, and consequently no opinion is given as to whether the accounts present a 'true and fair view' and the report is limited to those matters set out in the statement below.

Independent examiner's statement

I have completed my examination. I confirm that no material matters have come to my attention in connection with the examination which gives me cause to believe that in, any material respect:

- the accounting records were not kept in accordance with section 130 of the Charities Act; or
- the accounts did not accord with the accounting records; or
- the accounts did not comply with the applicable requirements concerning the form and content of accounts set out in the Charities (Accounts and Reports) Regulations 2008 other than any requirement that the accounts give a 'true and fair' view which is not a matter considered as part of an independent examination.

I have no concerns and have come across no other matters in connection with the examination to which attention should be drawn in this report in order to enable a proper understanding of the accounts to be reached.



Simon Porter FCA
Independent Examiner
120 Woodcote Road, Caversham, Reading RG4 7EZ

Dated: 9 January 2022

Rural Extension with Africa's Poor

Statement of Financial Activities For the year ended 5 April 2021

	Note	2021 £	2020 £
Incoming resources:			
Donations received	2	31,941	45,984
Gift Aid tax receivable		1,712	1,381
Total incoming resources in the period		33,653	47,365
Resources expended:			
In furtherance of the Charity's objectives:			
Grants made	3	32,996	38,941
For management and administration:			
Website		14	0
Fundraising		1,600	0
Fees to independent examiner		100	100
Total expenditure in the period		34,710	39,041
Net (outgoing)/incoming resources and net movement in funds in the period		(1,057)	8,324
Funds brought forward at 5 April 2020 (2019)		18,095	9,771
Funds carried forward at 5 April 2021 (2020)		17,038	18,095

The Notes on page 13 form part of these Accounts

Rural Extension with Africa's Poor

Balance Sheet As at 5 April 2021

Charity registration number 1075121

	Note	2021 £	2020 £
Current assets:			
Debtors	5	1,712	1,381
Bank balance		16,026	16,814
		<u>17,738</u>	<u>18,195</u>
Current liabilities:			
Accruals		700	100
		<u>700</u>	<u>100</u>
Net current assets and net assets		<u>17,038</u>	<u>18,095</u>
Accumulated funds	3	<u>17,038</u>	<u>18,095</u>

These Accounts were approved by the Board of Trustees on 9 January 2022.



Philip M Johnson

Trustee

Dated: 9 January 2022

The Notes on page 13 form part of these Accounts

Rural Extension with Africa's Poor

Notes to the Accounts

As at 5 April 2021

1. Accounting policies

These accounts have been prepared using the following accounting policies:

Donations received are included when they are received, net of tax where appropriate.

Tax received is accrued in the year that the corresponding gift is received.

Income from sales of books and videos is included when it is received.

Interest received is included net of tax when it is received.

	2021	2020
	£	£
2. Donations received		
Donations received	<u>31,941</u>	<u>45,984</u>
3. Grants		
Grants made	<u>32,996</u>	<u>38,941</u>
4. Movements in Funds		
Unrestricted funds:		
Balance at start of year	18,095	9,771
Net incoming resources for year	<u>(1,057)</u>	<u>8,324</u>
Balance at end of year	<u>17,038</u>	<u>18,095</u>
Restricted funds:		
Balance at start of year	0	0
Net incoming resources for year	<u>0</u>	<u>0</u>
Balance at end of year	<u>0</u>	<u>0</u>
Accumulated funds	<u>17,038</u>	<u>18,095</u>
5. Debtors		
Gift Aid recoverable	<u>1,712</u>	<u>1,381</u>
	<u>1,712</u>	<u>1,381</u>