

Asperger East Anglia
Unaudited financial statements
31 March 2021

Asperger East Anglia

Financial statements

Year ended 31 March 2021

	Page
Trustees' annual report	1
Independent examiner's report to the trustees	11
Statement of financial activities	13
Balance sheet	14
Statement of cash flows	15
Notes to the financial statements	16

Asperger East Anglia

Trustees' annual report

Year ended 31 March 2021

The trustees present their report and the unaudited financial statements of the charity for the year ended 31 March 2021.

The financial statements have been prepared in accordance with the accounting policies set out in notes to the accounts and comply with the charity's governing document, the Charities Act 2011 and Accounting and Reporting by Charities: Statement of Recommended Practice applicable to charities preparing their accounts in accordance with the Financial Reporting Standard applicable in the UK and Republic of Ireland published in October 2019.

Reference and administrative details

Registered charity name	Asperger East Anglia
Charity registration number	1074699
Principal office	Charing Cross Centre 17-19 St John Maddermarket Norwich NR2 1DN

The trustees

The trustees who served during the year and at the date of approval were as follows:

Mrs Marcella Olive MBE
Mr Jeremy Elliott
Dr Elizabeth Kershaw BSc PGCE PhD
Dr Ekkehart Staufenberg MSc, MD, MRCPsych, Cert.HM
Mr Norman Angus BSc (Hons)
Ms Julie Elliott (appointed 5 October 2020)
Mrs Mary Laxton
Ms Jo Watts
Ms Fiona Hare (appointed 10 August 2020)
Rev Andrew Good (appointed 10 August 2020)
Dr Peter Langdon DClinPsy, PhD, CPsychol, AFBPsS

Chief Executive Officer	Thecla Fellas
Independent examiner	S C Mary FCA Lovewell Blake LLP Chartered accountants Bankside 300 Peachman Way Broadland Business Park Norwich NR7 0LB
Bankers	HSBC Bank plc 18 London Street Norwich Norfolk

Asperger East Anglia

Trustees' annual report *(continued)*

Year ended 31 March 2021

Objectives and activities

- **Objects of the Charity**

The Charity exists to relieve the stress experienced by children, young people and adults (in the East Anglia Region) diagnosed with or suspected to have Asperger syndrome, by the provision of support and assistance to such persons, their families and their carers.

- **Vision**

Asperger East Anglia will develop its structures and systems to ensure long term sustainability and a quality service to meet the needs of people with Asperger syndrome.

- **Mission Statement**

Asperger East Anglia will provide services to meet the needs of people with Asperger syndrome, will work with partners and will raise public awareness of the needs of people with Asperger syndrome.

- **Summary of main activities in relation to the objectives of the Charity**

- Providing Information, Advice, Guidance and Support
- Raising Awareness of Asperger syndrome
- Fundraising

In addition, the charity managed a number of specific projects during the year ended 31 March 2021 as follows:

- Children and family support groups
- Adult social groups
- Parent and carer support
- Education information, advice and guidance
- Training and Pre Employment Workshop project
- Personal support service
- Independent Living project

Providing Information, Advice, Guidance and Support

The Charity continued to respond to hundreds of telephone calls and emails from people requesting support, information, advice and guidance on Asperger syndrome and associated issues.

Asperger East Anglia

Trustees' annual report *(continued)*

Year ended 31 March 2021

Objectives and activities *(continued)*

Raising Awareness of Asperger Syndrome

Over the year we have continued to raise awareness of the needs of those with Asperger syndrome and their families. Despite the pandemic we were able to utilise virtual resources to continue to raise awareness and ensured the following:

- Asperger East Anglia was represented on many voluntary sector forums.
- The continued delivery of awareness presentations to a variety of audiences across all sectors.
- A presence at several virtual conferences and events in this year and represented those we support with a voice to challenge areas that are not being met by the governments 'Autism bill' which became the 'Autism act' in November 2009.
- Networked and worked in partnership with other voluntary and statutory organisations including Children's Services, Adult Services, Health Services and DWP.
- Lobbied MPs.

Risk Management

The strategic committee met regularly during this year to help plan for expected funding cuts and to prepare for the most significant risks that the charity faces including:

- **Failure to obtain funding for ongoing projects.** Most project funding is confirmed annually. We are working hard to try to secure more long-term project funding.
- **Failure to reach our fundraising target.** The current economic outlook continues to raise concerns about the challenges of fundraising.

Objectives for the Year

Asperger East Anglia's key aims, and objectives met in 2020/21 were:

- The continued development of our trading arm Asperger Community Developments (East Anglia) Limited.
- To increase the scope of training available within the Beccles workshop project and 'A' shop.
- To expand all services to meet needs.
- To increase our staff capacity for providing the Personal Support Service and for our online selling project.

Public Benefit

The public benefit of our service is to all our clients who have been formally diagnosed with Asperger syndrome (AS), their families, carers, educators, and employers.

The trustees have paid due regard to the Charity Commission's guidance on public benefit in deciding what activities the charity should undertake.

Asperger East Anglia

Trustees' annual report *(continued)*

Year ended 31 March 2021

Achievements and performance

Children, Young People and Families Services

Children and Family Support Groups

During this year we transferred Children and Family support group over to virtual meetings. The groups have continued to provide fortnightly social activities for children with AS and their families via an online platform. Staff adapted creative activities that were delivered virtually including, social games art, craft, and cookery. We were unfortunately unable to provide outings and external activities due to the pandemic restrictions however we provided regular support throughout the year and ensured parents could have access to help outside of the regular meetings. The groups provided support to over 40 families in total throughout the year.

Education support has been maintained using virtual meetings for parents struggling to educate children while at home during the pandemic. Advice and support included telephone and e-mail support as well as face to face meetings on a virtual platform.

Adult Services

Carers Support

The need for carer support increased during 2021. The pandemic lockdown increased the anxiety levels of those with Autism which had a negative impact on the wellbeing of those who carer for them. We received over 200 calls from carers/parents struggling to cope for their loved ones while isolating. The pressure upon carers during this time was like no other and to respond to the demand and change in support requirements we supplied an emergency basic needs service which included shopping, collecting prescriptions, arranging doctors and hospital appointments, and arranging any household services. Our personal support workers also supplied a respite service for carers where their cared for person was supported away from the home allowing the carer time to themselves. In between the lockdowns we helped two families to have a respite break at a holiday camp while support was put in place for their loved ones at home.

Employment and Training

During this year we were unable to supply work experience placements due to the pandemic lockdowns, our workshops were closed for most of the year and therefore it was not possible to invite people to attend the training sessions. Our employment advisor did however have requests for support that could be delivered virtually such as help to apply for job vacancies, completing a CV and general job coaching. We had requests to support at job retention meetings and were able to advice employers about difficulties in the workplace for those employed with Asperger syndrome.

Personal Support Service

The personal support service offers individuals with Asperger syndrome the opportunity to receive support in a range of settings and situations including within their home environment. Our PA's work with a person-centered approach to assist individuals to access community-based activities and promote independence. We responded to our services users change in needs during the pandemic by supplying a weekly basic needs service. Our support workers adapted support using online platforms, text, and email, this was offered on a daily basis to those that were in crisis due to the increased isolation from the lockdowns. We were able to monitor people's wellbeing and work closely with mental health services when identifying anyone in crisis.

Moving On Project

Our independent living project is housed above one of our premises in Beccles and has offered young people with AS the opportunity of to be supported while learning all the skills needed to live independently.

Asperger East Anglia

Trustees' annual report *(continued)*

Year ended 31 March 2021

Achievements and performance *(continued)*

Review of Fundraising Performance

The charity continued to need to raise funds for specific projects and to meet the general management costs of the charity, by:

- Contracting a professional fundraising consultant, Felton Fundraising.
- Making applications to local and national statutory funding bodies.
- Develop new services with a self-funding model.

The following funders have supported our charitable activities during the year:

Charitable Trust 2020/21	Project
Anonymous	Norwich Drop in project
The 29 th May 1961 Charitable Trust	Social support groups
The Alchemy Foundation	Social support groups
The Elledale Trust	Social groups (Help for Norfolk Children)
Suffolk Community Foundation	Beccles Workshop project
Suffolk Community Foundation	Carers Respite project
Suffolk Community Foundation	Core Running Costs
Bank of England	Social support groups
Charities Aid Foundation	Resilience Funding
The Rickety Charitable Trust	Social support groups
John Risebow's Charity	Beccles Workshop project
The Garfield Weston	Core running Costs
The National Lottery Community Fund	Employment and Training and Helpline
The National Lottery Community Fund	Covid- 19 Response Help for people with AS
Norfolk Community Foundation	Support worker salary
Norfolk Community Foundation	Covid- 19 Response
The Aquarius Charitable Foundation	Beccles Workshop project
The Greys Court Trust	Beccles Workshop project
Annie Tranmer Charitable Trust	Beccles Workshop project
Big Issue Invest	Emergency Response Fund
Lady Hind Trust	Social support groups
Lloyds Bank Foundation	Covid- 19 Response
Lloyds Bank Foundation	Moving On project
The Nichol - Young Foundation	Beccles Workshop project
Douglas Arter Foundation	Beccles Workshop project
Awards For All	Covid- 19 Response

Asperger East Anglia

Trustees' annual report *(continued)*

Year ended 31 March 2021

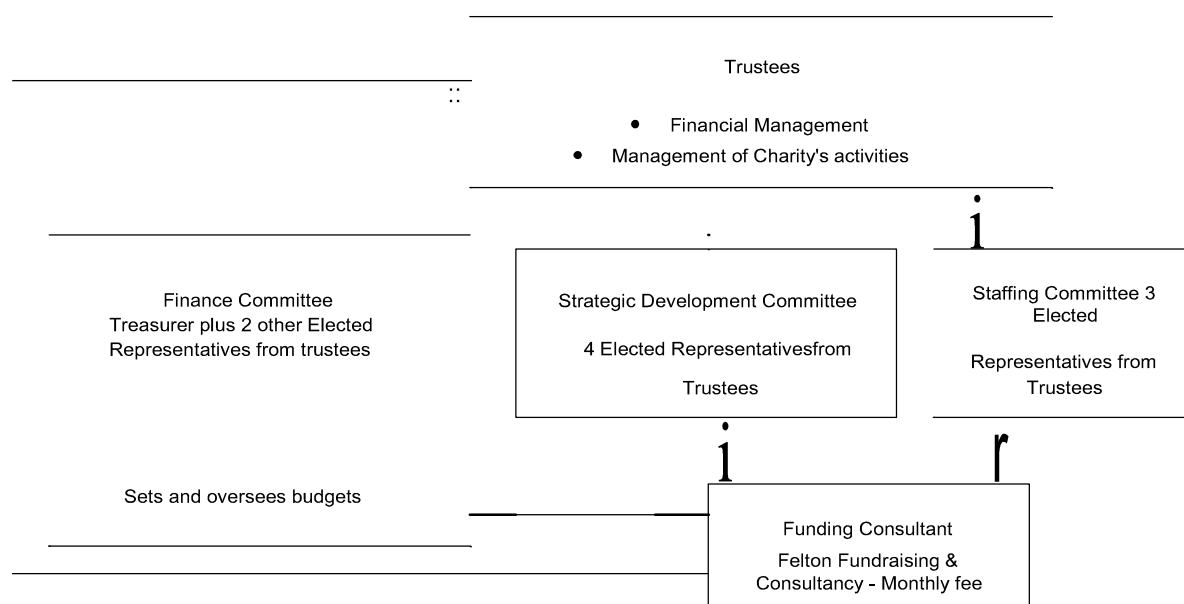
Achievements and performance *(continued)*

The following statutory bodies have provided funding during the reporting year:

Project	
Personal Support Service	Norfolk County Council
Workshop training	Suffolk County Council

Management Review

The following diagram shows how the charity has been managed during the reporting year:



During the reporting year Asperger East Anglia employed 29 staff, 4 of whom were paid for a maximum of 37.5 hours per week. The remaining staff worked on a part-time or sessional basis.

The charity is an equal opportunities employer. It is aware of its statutory duty to support the employment of disabled persons where possible, both in recruitment and by retention of employees who become disabled whilst in the employment of the charity, as well as generally through training and career development. During the year 2021-21 Asperger East Anglia employed 6 people with Asperger syndrome (a registered disability under the Disabled Persons Act).

Asperger East Anglia

Trustees' annual report *(continued)*

Year ended 31 March 2021

Financial review

As the financial year 2019/2020 ended, the early stages of what has become the Covid-19 pandemic were evident. AEA was quick to review its exposure to risk, physically, financially and as a charity. Considering known and/or promised resources, we recast our financial forecasts together with our revised project plans, to support our staff and importantly our clients, those least able to cope. Although what we do and how we do it has had to change we remain committed to meeting the needs of our vulnerable clients and their families. We also took the decision to continue to employ all our staff and once it became clear that the Chancellor of The Exchequer had a plan to provide furlough funding, we had the means in place to do just that.

We continued to deliver our services throughout the year, although in different ways to what we were accustomed to. We managed our budget wisely while seeking new sources of funding although traditional sources were drying up rapidly. Most importantly though we could afford to continue. We maintained a balanced portfolio of funding, relying least on statutory sources, taking advantage of every opportunity for available lottery or trusts funds but most importantly growing our own resources year on year, making us more self-funding and therefore self-reliant. Uncertainty is never far away but we will always put the charity first and continue to seek to mitigate future issues by being forward-looking, finding ways to best manage our cashflow.

Our income for the financial year was £550,843 (2020: £369,271), up by approximately 49% on the previous year and expenditure was £385,081 (2020: £370,943), up by 4%. This in turn has increased our overall funds balance from £7,449 at the end of 2019/20, to £173,211 for 2020/21, of which £18,990 are restricted funds and £154,221 in unrestricted reserves. As in recent years, it should be appreciated and expected that pressure on funding continued to force the charity to use a proportion of its reserves to aid those projects whose funding has declined, however the expenditure has been supported by the additional income gained from Asperger Community Development (East Anglia) Limited (ACD), at certain times through the year. We are very pleased to report that our reserve position has very much improved during the financial year. The Covid-19 pandemic has certainly given us significant challenge but by finding ways to continue to operate e.g. increasing e-Bay selling through our trading arm, because our shops remained closed, we have gained significant income. Also, where we had been unable to utilise some staff members, we applied for and received furlough payments through HMRC, this in turn meant that unrestricted resources which might otherwise have been used were kept in reserve. These accounts should always be read in conjunction with those of the trading arm. It must be remembered that we can only utilise restricted funding for the purposes the funder(s) intends and any unanticipated charges or events must be borne by unrestricted funds.

Our trading arm, ACD continues to generate income since the move to Beccles. Since mid-July 2014, the Beccles operation has borne fruit and all the staff there, in whatever capacity, must be commended for the effort they put in to make it work. It has enabled us to demonstrate to funders that we are doing things to help ourselves and provides valuable unrestricted income that we can use to support the charity's efforts. This "opportunity shop" has everything in one place, a shop, workshops (Furniture, Electrical) and space for training/meeting rooms. The flexibility of the facility and those involved have demonstrated that they can maintain what works well but adjust what doesn't, this presents an ever-changing look to where and how our income gets generated.

In October 2017 we opened a second retail shop in Beccles, complementing our existing facility. The main reason for doing so was to expand our floor sales area but to also utilise the upstairs space and provide supported living to young people with Autism. This has proven to be a highly successful project that we hope to replicate and expand in the future.

Asperger East Anglia

Trustees' annual report *(continued)*

Year ended 31 March 2021

Financial review *(continued)*

As always, we do remain under significant financial pressure. As Covid-19 restrictions eased, footfall in our shops has not yet returned to pre-Covid levels and students are not yet permitted to get training in our workshops. With many more charities having to seek funding from trusts and grant makers it makes the process of applying for funds far more competitive. We are doing well at this moment in time but we have been close to critical mass before and we want to be sure we can still support all our services into the future. The local authority in Norfolk continue to pay little regard to the struggles of people with Autism, care assessments are still failing to identify the needs of our service users and in our view they are failing to abide by the Autism Act of 2009. Norfolk County Council have introduced an Autism strategy and we have written to them to express our concerns about its implementation. It speaks volumes in the fact that they haven't even acknowledged our correspondence, let alone articulated some sort of response. We strongly disagree with their financial pursuit of the vulnerable to make ends meet with an ever-increasing charging policy and will support our service users to actively challenge these failings as they present themselves.

It has not been without some considerable effort on the part of AEA/ACD management, our staff and those we look to, to aid us in our fundraising activities, for matters to have been maintained to the extent that they have. We highly value all those funders, whether large or small, who have supported this charity through the years, we could not do this without them. We will maintain our focus and, if this financial year's results are anything to go by, forge ahead, keep our much-valued staff and continue to provide valuable services to those with AS and their families. We said this last year and it is worth repeating that we have had to change what we do and how we do it over the years and with good management of change we can maintain our effectiveness. We sincerely hope we can continue to find ways to maintain or resurrect services in some way, shape or form in the future. We need to be imaginative and flexible as we hope you realise we have always had to be.

We must always seek to maintain our transparency; be clear on how beneficial we are and can be to a very specific group with a lifelong need that can be eased with our help but not cured. We must continue to persuade people and funders alike that we are worth supporting, that we can have a positive impact on people's lives and that in most cases we work for and achieve great results. The Trustees thank every single person, group and organisation that supports us from the smallest donation, to buying something in our shops, to those interested in and generously funding our projects.

Reserves policy

It is the aim of the trustees to build free reserves totalling £100,000, sufficient to cover the operating costs of the charity for a 3 month period and thereby secure the continued provision of its services in the event of significant demands for such service being placed upon it without immediate funding.

The free reserves at 31 March 2021 amount to £150,595 (2020: deficit of £303) representing approximately 5 months' expenditure, excluding depreciation. Restricted funds totalled £18,990 (2020: £3,944) at 31 March 2021.

Asperger East Anglia

Trustees' annual report *(continued)*

Year ended 31 March 2021

Financial review *(continued)*

Going Concern

The Trustees are aware of the significant positive change in our reserves position as of 31 March 2021, they remain satisfied the financial statements should be prepared on a going concern basis as they believe that:

- the funding which has been secured - in some respects for a periods of three years;
- the targeted focus on self-generated income through Asperger Community Development - which has been successful post year end;
- and the charity's previous success with grant funding applications

will be sufficient to enable the charity to continue to operate. Therefore the Trustees believe that no material uncertainties over the going concern status of the charity.

Plans for future periods

Key Future Plans

In addition to the continuance of all our projects Asperger East Anglia's key aims and objectives for 2021/2022 are:

- To continue to expand both the Workshop project.
- To continue to establish working partnerships with other organisations and statutory organisations.
- To develop all new services with a self-sustainable model.
- To continue to expand the Independent Living Project.
- To market and promote AS awareness training workshops.
- To review and update all existing policies.
- To review and update training packs and materials.

Structure, governance and management

Constitution

Asperger East Anglia is a registered charity and is governed by a Declaration of Trust made on the 8th July 1998 and Supplemental Deed 8th June 2004.

Recruitment and Appointment of Trustees

The minimum number of serving trustees is three. Trustees are appointed by a resolution of the trustees, passed at a special meeting with 21 days notice. In selecting persons to be appointed as trustees, the existing trustees shall take into account the benefits of appointing a person who through residence, occupation, employment, special knowledge, or personal or professional qualifications can make a contribution to the pursuit of the objects or the management of the Charity.

Trustees Induction and Training

All new trustees are provided with a comprehensive induction pack to Asperger East Anglia, which includes the Deed of Trust, current business plan, staffing structure, annual budget and last audited accounts. They are also provided with details of their obligations under Charity Law. Following their appointment, we will endeavour to provide trustees with ongoing training by recommending relevant courses for them to attend as appropriate.

Asperger East Anglia

Trustees' annual report *(continued)*

Year ended 31 March 2021

Structure, governance and management *(continued)*

Organisation Structure and Decision Making

The Trustees meet at least bi-monthly with special meetings being held when circumstances dictate. The trustees govern and strategically manage the charity but employ a Chief Executive Officer and staff to carry out day to day functions.

Related parties

One of the Trustees of Asperger East Anglia is also a director of Asperger Community Development (East Anglia) Limited, while a further Trustee is company secretary.

True and Fair override

The accounts (financial statements) have been prepared to give a "true and fair" view and have departed from the Charities (Accounts and Reports) Regulations 2008 only to the extent required to provide a "true and fair" view. This departure has involved Accounting and Reporting by Charities preparing their accounts in accordance with the Financial Reporting Standard applicable in the UK and Republic of Ireland (FRS102) issued in October 2019 rather than the Accounting and Reporting by Charities: Statement of Recommended Practice effective from 1 April 2005 which has since been withdrawn.

Independent examiner

S C Mary FCA of Lovewell Blake LLP is willing to be re-appointed as independent examiner for the ensuing year.

The trustees' annual report was approved on 14 December 2021 and signed on behalf of the board of trustees by:

Mrs Marcella Olive MBE
Trustee

Mr Jeremy Elliott
Trustee

Asperger East Anglia

Independent examiner's report to the trustees of Asperger East Anglia

Year ended 31 March 2021

I report to the charity trustees on my examination of the financial statements of the charity for the year ended 31 March 2021 which are set out on pages 13 to 25.

Responsibilities and basis of report

As the charity's trustees you are responsible for the preparation of the financial statements in accordance with the requirements of the Charities Act 2011 ('the Act').

I report in respect of my examination of the charity's financial statements carried out under section 145 of the Act and in carrying out my examination I have followed all the applicable Directions given by the Charity Commission under section 145(5)(b) of the Act.

Independent examiner's statement

Since the charity's gross income exceeded £250,000 your examiner must be a member of a body listed in section 145 of the 2011 Act. I confirm that I am qualified to undertake the examination because I am a member of the Institute of Chartered Accountants in England and Wales (ICAEW), which is one of the listed bodies.

I have completed my examination. I confirm that no material matters have come to my attention in connection with the examination giving me cause to believe that in any material respect:

1. accounting records were not kept in respect of the charity as required by section 130 of the Act; or
2. the financial statements do not accord with those records; or
3. the financial statements do not comply with the applicable requirements concerning the form and content of accounts set out in the Charities (Accounts and Reports) Regulations 2008 other than any requirement that the accounts give a 'true and fair' view which is not a matter considered as part of an independent examination.

Asperger East Anglia

Independent examiner's report to the trustees of Asperger East Anglia *(continued)*

Year ended 31 March 2021

I have no concerns and have come across no other matters in connection with the examination to which attention should be drawn in this report in order to enable a proper understanding of the accounts to be reached.

Your attention is drawn to the fact that the Charity has prepared the accounts (financial statements) in accordance with Accounting and Reporting by Charities: Statement of Recommended Practice applicable to charities preparing their accounts in accordance with the Financial Reporting Standard applicable in the UK and Republic of Ireland (FRS 102) in preference to the Accounting and Reporting by Charities: Statement of Recommended Practice issued on 1 April 2005 which is referred to in the extant regulations but has since been withdrawn.

I understand that this has been done in order for the accounts to provide a true and fair view in accordance with the Generally Accepted Accounting Practice effective for reporting periods beginning on or after 1 January 2015.

S C Mary FCA
Independent Examiner

Lovewell Blake LLP
Chartered accountants
Bankside 300
Peachman Way
Broadland Business Park
Norwich
NR7 0LB

15 December 2021

Asperger East Anglia

Statement of financial activities

Year ended 31 March 2021

		Unrestricted funds £	2021 Restricted funds £	Total funds £	2020 Total funds £
	Note				
Income and endowments					
Donations and legacies	4	96,218	–	96,218	45,938
Charitable activities	5	73,030	293,932	366,962	321,009
Other income	6	87,663	–	87,663	2,324
Total income		<u>256,911</u>	<u>293,932</u>	<u>550,843</u>	<u>369,271</u>
Expenditure					
Raising funds					
Costs of raising donations and legacies	7	–	(8,290)	(8,290)	(8,053)
Charitable activities	8	(106,195)	(270,596)	(376,791)	(362,890)
Total expenditure		<u>(106,195)</u>	<u>(278,886)</u>	<u>(385,081)</u>	<u>(370,943)</u>
Net income/(expenditure) and net movement in funds		<u>150,716</u>	<u>15,046</u>	<u>165,762</u>	<u>(1,672)</u>
Reconciliation of funds					
Total funds brought forward		3,505	3,944	7,449	9,121
Total funds carried forward		<u>154,221</u>	<u>18,990</u>	<u>173,211</u>	<u>7,449</u>

The statement of financial activities includes all gains and losses recognised in the year.
All income and expenditure derive from continuing activities.

The notes on pages 16 to 25 form part of these financial statements.

Asperger East Anglia

Balance sheet

31 March 2021

	Note	2021 £	£	2020 £	£
Fixed assets					
Tangible fixed assets	13		3,626		3,808
Current assets					
Debtors	14	71,382		34,052	
Cash at bank and in hand		110,165		525	
		<u>181,547</u>		<u>34,577</u>	
Creditors: Amounts falling due within one year	15	<u>(11,962)</u>		<u>(30,936)</u>	
Net current assets			169,585		3,641
Total assets less current liabilities			<u>173,211</u>		<u>7,449</u>
Net assets			<u>173,211</u>		<u>7,449</u>
Funds of the charity					
Restricted funds			18,990		3,944
Unrestricted funds			154,221		3,505
Total charity funds	17		<u>173,211</u>		<u>7,449</u>

These financial statements were approved by the board of trustees and authorised for issue on 14 December 2021, and are signed on behalf of the board by:

Mrs Marcella Olive MBE
Trustee

Mr Jeremy Elliott
Trustee

The notes on pages 16 to 25 form part of these financial statements.

Asperger East Anglia

Statement of cash flows

Year ended 31 March 2021

	2021 £	2020 £
Cash flows from operating activities		
Net income/(expenditure)	165,762	(1,672)
<i>Adjustments for:</i>		
Depreciation of tangible fixed assets	1,210	1,267
Accrued expenses/(income)	2,280	(9,782)
<i>Changes in:</i>		
Trade and other debtors	(39,397)	(6,179)
Trade and other creditors	(19,187)	13,256
Cash generated from operations	110,668	(3,110)
Net cash from/(used in) operating activities	<u>110,668</u>	<u>(3,110)</u>
Cash flows from investing activities		
Purchase of tangible assets	(1,028)	(1,020)
Net cash used in investing activities	<u>(1,028)</u>	<u>(1,020)</u>
Net increase/(decrease) in cash and cash equivalents	109,640	(4,130)
Cash and cash equivalents at beginning of year	525	4,655
Cash and cash equivalents at end of year	<u>110,165</u>	<u>525</u>

The notes on pages 16 to 25 form part of these financial statements.

Asperger East Anglia

Notes to the financial statements

Year ended 31 March 2021

1. General information

The charity is a public benefit entity and a registered charity in England and Wales and is unincorporated. The address of the principal office is Charing Cross Centre, 17-19 St John Maddermarket, Norwich, NR2 1DN.

2. Statement of compliance

The charity constitutes a public benefit entity as defined by FRS 102. The financial statements have been prepared in accordance with Accounting and Reporting by Charities: Statement of Recommended Practice applicable to charities preparing their accounts in accordance with the Financial Reporting Standard applicable in the UK and Republic of Ireland issued in October 2019, the Financial Reporting Standard applicable in the United Kingdom and Republic of Ireland (FRS 102), the Charities Act 2011 and UK Generally Accepted Accounting Practice.

The financial statements have been prepared to give a 'true and fair' view and have departed from the Charities (Accounts and Reports) Regulations 2008 only to the extent required to provide a 'true and fair view'. This departure has involved following the Accounting and Reporting by Charities: Statement of Recommended Practice applicable to charities preparing their accounts in accordance with the Financial Reporting Standard applicable in the UK and Republic of Ireland issued in October 2019 rather than the Accounting and Reporting by Charities: Statement of Recommended Practice effective from 1 April 2005 which has since been withdrawn.

3. Accounting policies

Basis of preparation

The financial statements have been prepared on the historical cost basis.

Going concern

The accounts have been prepared on the going concern basis and the Trust believes that no material uncertainties exist. The Trustees have considered the level of funds held and the expected income and expenditure for the next 12 months from authorising these financial statements. The budgeted income and expenditure is sufficient with the level of reserves for the Trust to be able to continue as a going concern.

The trustees have taken into account the effects of COVID-19 in making this assessment.

Funds structure

Unrestricted funds are available for use at the discretion of the trustees to further any of the charity's purposes.

Restricted funds are subjected to restrictions on their expenditure declared by the donor or through the terms of an appeal.

Income

All income is included in the statement of financial activities when entitlement has passed to the charity, it is probable that the economic benefits associated with the transaction will flow to the charity and the amount can be reliably measured. The following specific policies are applied to particular categories of income:

Asperger East Anglia

Notes to the financial statements *(continued)*

Year ended 31 March 2021

3. Accounting policies *(continued)*

Income *(continued)*

- donations and legacy income is received by way of donations, legacies, grants and gifts and is included in full in the Statement of Financial Activities when receivable. Where legacies have been notified to the charity but the criteria for income recognition have not been met, the legacy is treated as a contingent asset and disclosed if material. Grants, where entitlement is not conditional on the delivery of a specific performance by the charity, are recognised when the charity becomes unconditionally entitled to the grant.

- donated services and facilities are included at the value to the charity, being the amount the charity would have been willing to pay to obtain services or facilities of equivalent economic benefit on the open market.

- investment income is included when receivable.

- income from charitable trading activity is accounted for when earned.

- income from grants, where related to performance and specific deliverables, are accounted for as the charity earns the right to consideration by its performance.

Expenditure

Expenditure is recognised on an accruals basis as a liability is incurred. Expenditure includes any VAT which cannot be fully recovered, and is classified under headings of the statement of financial activities to which it relates:

- costs of raising funds comprise the costs associated with attracting donations, grants and legacies and the costs of trading for fundraising purposes.

- charitable expenditure comprises those costs incurred by the charity in the delivery of its activities and services for its beneficiaries. It includes both costs that can be allocated directly to such activities and those costs of an indirect nature necessary to support them.

- other expenditure includes all expenditure that is neither related to raising funds for the charity nor part of its expenditure on charitable activities.

All costs are allocated between the expenditure categories of the SOFA on a basis designed to reflect the use of the resource. Costs relating to a particular activity are allocated directly, others are apportioned on an appropriate basis, as set out in the notes to the accounts.

Operating leases

Rentals payable under operating leases are charged in the Statement of Financial Activities on a straight line basis over the lease term.

Tangible assets

The cost of tangible fixed assets includes only the expenditure incurred in bringing the assets into working condition for their intended use.

There is no value below which assets are not capitalised.

Impairment reviews are only carried out on groups of assets where there has been an indication of impairment.

Asperger East Anglia

Notes to the financial statements *(continued)*

Year ended 31 March 2021

3. Accounting policies *(continued)*

Depreciation

Depreciation is calculated so as to write off the cost or valuation of an asset, less its residual value, over the useful economic life of that asset as follows:

Motor Vehicles	-	25% reducing balance
Office Equipment	-	25% reducing balance

Taxation

The charity is exempt from income tax on all its activities.

Financial instruments

A financial asset or a financial liability is recognised only when the entity becomes a party to the contractual provisions of the instrument.

Basic financial instruments are initially recognised at the amount receivable or payable including any related transaction costs, unless the arrangement constitutes a financing transaction, where it is recognised at the present value of the future payments discounted at a market rate of interest for a similar debt instrument.

Current assets and current liabilities are subsequently measured at the cash or other consideration expected to be paid or received and not discounted.

Debt instruments are subsequently measured at amortised cost.

Defined contribution plans

Contributions to defined contribution plans are recognised as an expense in the period in which the related service is provided. Prepaid contributions are recognised as an asset to the extent that the prepayment will lead to a reduction in future payments or a cash refund.

When contributions are not expected to be settled wholly within 12 months of the end of the reporting date in which the employees render the related service, the liability is measured on a discounted present value basis. The unwinding of the discount is recognised as an expense in the period in which it arises.

4. Donations and legacies

	Unrestricted Funds £	Total Funds 2021 £	Unrestricted Funds £	Total Funds 2020 £
Donations				
Donations	73,181	73,181	45,790	45,790
Gift aid from Asperger Community Development (East Anglia) Limited	23,037	23,037	—	—
Subscriptions				
Membership subscriptions	—	—	148	148
	<u>96,218</u>	<u>96,218</u>	<u>45,938</u>	<u>45,938</u>

Asperger East Anglia

Notes to the financial statements *(continued)*

Year ended 31 March 2021

5. Charitable activities

	Unrestricted Funds £	Restricted Funds £	Total Funds 2021 £
Personal Support Service	73,030	37,763	110,793
Drop in Centre	—	33,709	33,709
Workshop Opportunities - Placements	—	1,058	1,058
Adult Group	—	3,414	3,414
Adult Carers	—	12,828	12,828
Workshop Opportunities - Big Lottery Funding	—	60,000	60,000
Workshop Opportunities - Grants and Appeals	—	50,240	50,240
Moving On	—	44,185	44,185
Children and Family Support	—	50,735	50,735
	<u>73,030</u>	<u>293,932</u>	<u>366,962</u>

	Unrestricted Funds £	Restricted Funds £	Total Funds 2020 £
Personal Support Service	60,978	32,924	93,902
Drop in Centre	—	—	—
Workshop Opportunities - Placements	—	18,890	18,890
Adult Group	—	2,475	2,475
Adult Carers	—	6,344	6,344
Workshop Opportunities - Big Lottery Funding	—	106,792	106,792
Workshop Opportunities - Grants and Appeals	—	31,750	31,750
Moving On	—	51,136	51,136
Children and Family Support	—	9,720	9,720
	<u>60,978</u>	<u>260,031</u>	<u>321,009</u>

Included in charitable activities is Government funding of £69,364 (2020: £140,097).

6. Other income

	Unrestricted Funds £	Total Funds 2021 £	Unrestricted Funds £	Total Funds 2020 £
CJRS furlough income	<u>87,663</u>	<u>87,663</u>	<u>2,324</u>	<u>2,324</u>

7. Costs of raising donations and legacies

	Unrestricted Funds £	Restricted Funds £	Total Funds 2021 £
Fundraising consultancy and expenses	<u>—</u>	<u>8,290</u>	<u>8,290</u>

	Unrestricted Funds £	Restricted Funds £	Total Funds 2020 £
Fundraising consultancy and expenses	<u>1,220</u>	<u>6,833</u>	<u>8,053</u>

Asperger East Anglia

Notes to the financial statements (continued)

Year ended 31 March 2021

8. Expenditure on charitable activities

	Activities undertaken directly £	Support costs £	Total funds 2021 £	Total fund 2020 £
Personal Support Service	64,975	24,414	89,389	114,851
Youth Group	25,108	9,219	34,327	–
Workshop Opportunities - Big Lottery Funding	54,872	22,065	76,937	134,633
Adult Carers	10,967	4,027	14,994	6,333
Adult Group	2,544	934	3,478	5,147
Moving On	39,068	14,344	53,412	57,573
Workshop Opportunities - Grants and Appeals	39,670	17,445	57,115	31,738
Children and Family Support	27,240	17,438	44,678	10,657
Governance costs	–	2,461	2,461	1,958
	<u>264,444</u>	<u>112,347</u>	<u>376,791</u>	<u>362,890</u>

Analysis of governance costs

	Unrestricted Funds £	Restricted Funds £	Total Funds 2021 £	Total Funds 2020 £
Independent examination	–	2,448	2,448	1,944
Depreciation	13	–	13	14
	<u>13</u>	<u>2,448</u>	<u>2,461</u>	<u>1,958</u>

Support costs

	Governance £	Charitable Activities £	Total Allocated £
Staff costs - Usage	–	102,872	102,872
Other admin costs - Usage	2,461	7,014	9,475
	<u>2,461</u>	<u>109,886</u>	<u>112,347</u>

The financial statements for the year ended 31 March 2021 included £270,596 (2020: £257,207) of restricted charitable activities expenditure.

9. Net income/(expenditure)

Net income/(expenditure) is stated after charging/(crediting):

	2021 £	2020 £
Depreciation of tangible fixed assets	1,210	1,267
Operating lease payments	<u>3,295</u>	<u>3,307</u>

10. Independent examination fees

	2021 £	2020 £
Fees payable to the independent examiner for: Independent examination of the financial statements	<u>2,448</u>	<u>1,944</u>

Asperger East Anglia

Notes to the financial statements *(continued)*

Year ended 31 March 2021

11. Staff costs

The total staff costs and employee benefits for the reporting period are analysed as follows:

	2021 £	2020 £
Wages and salaries	343,515	343,152
Social security costs	16,667	16,412
Employer contributions to pension plans	5,114	4,944
	<u>365,296</u>	<u>364,508</u>
Less: recharged to Asperger Community Development (East Anglia) Ltd	(24,933)	(42,283)
	<u>340,363</u>	<u>322,225</u>

Key management personnel remuneration amounted to £51,348 in respect of one employee (2020: £44,785 one employee).

The average head count of employees during the year was 29 (2020: 35).

No employee received employee benefits of more than £60,000 during the year (2020: Nil).

12. Trustee remuneration and expenses

The trustees received no remuneration and had no expenses re-imbursed during either the current or previous year.

13. Tangible fixed assets

	Motor vehicles £	Office Equipment £	Total £
Cost			
At 1 Apr 2020	12,210	31,270	43,480
Additions	–	1,028	1,028
At 31 Mar 2021	<u>12,210</u>	<u>32,298</u>	<u>44,508</u>
Depreciation			
At 1 Apr 2020	10,082	29,590	39,672
Charge for the year	532	678	1,210
At 31 Mar 2021	<u>10,614</u>	<u>30,268</u>	<u>40,882</u>
Carrying amount			
At 31 Mar 2021	<u>1,596</u>	<u>2,030</u>	<u>3,626</u>
At 31 Mar 2020	<u>2,128</u>	<u>1,680</u>	<u>3,808</u>

Asperger East Anglia

Notes to the financial statements *(continued)*

Year ended 31 March 2021

14. Debtors

	2021 £	2020 £
Trade debtors	1,265	545
Prepayments and accrued income	12,653	14,720
Amounts owed by Asperger Community Development (East Anglia) Limited	53,364	18,787
Other debtors	4,100	–
	<u>71,382</u>	<u>34,052</u>

15. Creditors: Amounts falling due within one year

	2021 £	2020 £
Trade creditors	18	4,076
Accruals and deferred income	5,713	5,500
Social security and other taxes	5,294	17,649
Other creditors	937	3,711
	<u>11,962</u>	<u>30,936</u>

	2021 £	2020 £
Deferred income brought forward	1,928	–
Released during the year	(1,928)	–
Deferred during the year	1,738	1,928
Deferred income carried forward	<u>1,738</u>	<u>1,928</u>

Deferred income relates to personal budget income for April 2021.

16. Pensions and other post retirement benefits

Defined contribution plans

The amount recognised in income or expenditure as an expense in relation to defined contribution plans was £5,114 (2020: £4,944).

17. Analysis of charitable funds

Unrestricted funds

	At 1 Apr 2020 £	Income £	Expenditure £	Transfers £	At 31 Mar 2021 £
General funds	<u>3,505</u>	<u>256,911</u>	<u>(106,195)</u>	<u>–</u>	<u>154,221</u>

	At 1 Apr 2019 £	Income £	Expenditure £	Transfers £	At 31 Mar 2020 £
General funds	<u>1,160</u>	<u>109,240</u>	<u>(106,903)</u>	<u>8</u>	<u>3,505</u>

Asperger East Anglia

Notes to the financial statements *(continued)*

Year ended 31 March 2021

17. Analysis of charitable funds *(continued)*

Restricted funds

	At 1 Apr 2020	Income	Expenditure	Transfers	At 31 Mar 2021
	£	£	£	£	£
Adult Group	145	3,414	(2,544)	—	1,015
Adult Carers	1,745	12,828	(11,955)	—	2,618
Workshop Opportunities - Big Lottery Funding and Placements	—	61,058	(60,098)	—	960
Workshop Opportunities - Grants and Appeals	2	50,240	(49,030)	—	1,212
Moving On	2,045	44,185	(43,484)	—	2,746
Children and Family Support	7	50,735	(47,494)	—	3,248
Personal Support Service	—	37,763	(37,763)	—	—
Drop in Centre	—	33,709	(26,518)	—	7,191
	<u>3,944</u>	<u>293,932</u>	<u>(278,886)</u>	<u>—</u>	<u>18,990</u>

	At 1 Apr 2019	Income	Expenditure	Transfers	At 31 Mar 2020
	£	£	£	£	£
Computer Equipment	5	—	—	(5)	—
Laptop Depreciation	3	—	—	(3)	—
Adult Group	2,361	2,475	(4,691)	—	145
Adult Carers	1,173	6,344	(5,772)	—	1,745
Workshop Opportunities - Big Lottery Funding and Placements	—	125,682	(125,682)	—	—
Workshop Opportunities - Grants and Appeals	607	31,750	(32,355)	—	2
Moving On	3,812	51,136	(52,903)	—	2,045
Children and Family Support	—	9,720	(9,713)	—	7
Personal Support Service	—	32,924	(32,924)	—	—
Drop in Centre	—	—	—	—	—
	<u>7,961</u>	<u>260,031</u>	<u>(264,040)</u>	<u>(8)</u>	<u>3,944</u>

Purposes of funds:

Details and purposes of the funds can be found within the trustees report (pages 1 to 10).

Asperger East Anglia

Notes to the financial statements *(continued)*

Year ended 31 March 2021

18. Analysis of net assets between funds

As at 31 March 2021

	Tangible Fixed Assets £	Net Current Assets £	Total 2021 £
Restricted Income Funds:			
Adult Group	–	1,015	1,015
Adult Carers	–	2,618	2,618
Workshop Opportunities - Big Lottery Funding	–	960	960
Workshop Opportunities - Grants and Appeals	–	1,212	1,212
Moving On	–	2,746	2,746
Children and Family Support	–	248	3,248
Drop in Centre	–	6,091	7,191
	–	14,890	18,990
Unrestricted Income Funds	3,626	150,595	154,221
Total Funds	<u>3,626</u>	<u>165,485</u>	<u>173,211</u>

As at 31 March 2020

	Tangible Fixed Assets £	Net Current Assets £	Total 2020 £
Restricted Income Funds:			
Adult Group	–	145	145
Adult Carers	–	1,745	1,745
Workshop Opportunities - Grants and Appeals	–	2	2
Moving On	–	2,045	2,045
Children and Family Support	–	7	7
	–	3,944	3,944
Unrestricted Income Funds	3,808	(303)	3,505
Total Funds	<u>3,808</u>	<u>3,641</u>	<u>7,449</u>

19. Analysis of changes in net debt

	At 1 Apr 2020 £	Cash flows £	At 31 Mar 2021 £
Cash at bank and in hand	<u>525</u>	<u>109,640</u>	<u>110,165</u>

Asperger East Anglia

Notes to the financial statements *(continued)*

Year ended 31 March 2021

20. Operating lease commitments

The total future minimum lease payments under non-cancellable operating leases are as follows:

	2021	2020
	£	£
Not later than 1 year	4,267	4,267
Later than 1 year and not later than 5 years	13,476	16,711
	<u>17,743</u>	<u>20,978</u>

21. Related parties

During the year the following transactions were undertaken with Asperger Community Development (East Anglia) Limited, a company in which Mrs Marcella Olive MBE and Mr Jeremy Elliott are director and company secretary respectively:

	2021	2020
	£	£
Income received by the company on behalf of the Charity	3,400	19,981
Expenditure paid by Asperger East Anglia on behalf of the company	29,003	43,515
Expenditure paid by Asperger Community Development (East Anglia) Ltd on behalf of the Asperger East Anglia	—	100
Sales credits raised by Asperger East Anglia in relation to prior year recharges	2,076	—
Balance due from the company at the period end	53,364	18,787
Gift aid due to Asperger East Anglia	23,037	—

During the year trustees donated goods for resale through Asperger Community Development (East Anglia) Limited's charity shop. It is not practical to determine the value of donated items gifted.