



www.tsdmc.org.uk

“...an amazing opportunity; an inspired idea...”



**Annual Report and Financial Statements
For the year ending 5th April 2023**

Torbay and South Devon Music Centre¹
advancing music education for young people

The committee is pleased to present its report for the year ended 5th April 2023

Torbay and South Devon Music Centre has been supported by:

Devon and Torbay Music Education Hub

Torquay Boys' Grammar School

The Hill Family

The Lee Family

All our members and their parents; The music Centre wouldn't happen without you.

We thank them all.



¹ “.... the chance to be part of music making at its best - with others..”

Contents

Our Objectives - Why What We Do Matters.....	4
Activities - What We Do	7
Review of Developments and Achievements.....	9
Rehearsals, Concerts and Events	9
Members.....	122
Staff.....	15
Volunteers.....	16
The Clatworthy Legacy	16
Conventions, Conferences and Training.....	17
Music Education Hubs	17
Financial Review - How We Spent Your Money	18
Expenditure	18
Income	18
Our Reserves - Where We Go Next.....	18
Double Reed Playing.....	19
Publicity and Communications	19
Residential Weekends.....	20
The Committee and Trustees - Who We Are	21
Governance - How We Work.....	23
Our Ethos	25
Risk Management	26
Independent examiner's report.....	30

Our Objectives - Why What We Do Matters

“Arts and music education are not merely ‘extras’, but central to who we are.”
- Barack Obama

Music plays a key role in the lives of most people, particularly adolescents.

Evidence shows that children who experience high quality musical training have advantages across all school subjects and that participation in music

- enhances positive attitudes towards school, leading to
- higher attendance,
- increased motivation and
- improved behaviour.

The Music Centre provides an important, complementary service that encourages children to continue enjoying and benefitting from their playing.

We believe that group music making, amongst people of all backgrounds, offers the opportunity to

- engage in wider cultural experiences,
- explore new ideas,
- broaden experience and
- encourage tolerance.

Our data shows that some young people stay with us for as long as 10 years, demonstrating that The Music Centre is an important part of their lives through childhood and adolescence. Playing in an ensemble contributes to feelings of

- social inclusion,
- self-confidence and
- aspiration.

Our members learn about

- teamwork,
- communication and
- relating to others in a positive way.

But above all else, The Music Centre allows children to have fun.



The National Plan for Music Education

“When young people make music together, they work toward a common goal that has the potential to change lives profoundly for the better.” - The National Plan for Music Education

Through its collaboration with the Devon and Torbay Music Education Hub, The Music Centre is engaged in delivering some aspects of the National Plan.

- In providing a variety of ensembles, we ensure that children have an opportunity to make music with others, and that music education is supported outside schools.
- Our concerts provide an opportunity for children to perform regularly.
- By offering ensembles of varying standard, we give children the opportunity to progress along clearly signposted routes.
- We guide young people to other live music making opportunities. More experienced members have played with county ensembles and with Torbay Symphony Orchestra.
- Our bursaries and subsidies help children from all backgrounds to learn to play, and to progress, by making our ensembles affordable.
- Older members provide inspiring role models for younger ones.
- We ensure all members can learn from specialist instrumental teachers, and that enhanced experiences are available through providing access to specialist ensembles and instruments.
- The use of specialists ensures that our teaching is of a high quality.
- Through us, Hubs can deliver an offer that reaches beyond school boundaries and draws on additional expertise.
- We allow children to experience a range of musical genres and activities and stretch their boundaries.

- We provide teaching and progression routes beyond what individual schools can offer. These experiences can be broader and more challenging.
- These opportunities are not one-offs; they allow for continuous and ongoing progression.
- Residential weekends and attendance at specialist events allow our members to benefit from expert tuition, and to experience high quality playing at large scale events, at prestigious venues and with professional musicians.
- Our feedback demonstrates that our members experience enjoyment and success through all their stages of musical learning.

And that's what matters to us the most.

The objectives of the trust are established in our declaration of trust of 14th April 1998, as varied 22nd May 2012.

The trust's purpose is the advancement of musical education in South Devon by the:

- promotion and support of music training; and
- staging of musical events for young people in the area.



Activities - What We Do

Torbay and South Devon Music Centre operates under that name and as the Peninsula Clarinet Choir. We have approximately 80 members.

The Music Centre provides an opportunity for its members to enjoy playing their instruments and improve their musical skills by performing together. Orchestras and bands are led by experienced musicians and there are opportunities to play in concerts as well as weekly rehearsals. There are groups for players of all standards and all ages, though our focus is on the under 25s.

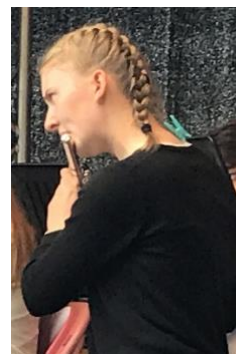
We also offer members the chance to try new and endangered instruments (such as piccolo, cor anglais, contrabass clarinet) and to become familiar with a greater range of musical styles.

Each term's work culminates in a concert performance staged in front of a live audience. This allows all our students to play in separate ensembles and the full orchestra. Senior students experience participation in a high-quality musical production whilst the more junior members not only participate but are inspired to strive for future success and development. This year we have performed two concerts in The Centenary Hall at TBGS and one outdoor concert on The Terrace, The Old Manor House, TBGS. Our groups have also participated in Music Hub events such as The Mix and on the Music Hub stage at The Devon County Show.

Annually, each group presents a prize to each outstanding member and a "Young Musician of the Year Award" is presented to the member who has made the greatest contribution to The Music Centre overall.

This is given at the last concert of the season.²

This academic year the award was given to Hannah Spear who has worked her way up through music centre groups to be lead flute player in Fute Choir and in TSDMC Orchestra. She is a helpful and reliable member of Music Centre. She has this year acheived her Grade 8 with distinction. Well done Hannah!



² "...fabulous teaching, fabulous concerts..."

The Peninsula Clarinet Choir draws its membership from clarinet enthusiasts across the region, meeting approximately monthly at various venues. It also holds a residential weekend with a professional masterclass and recital; and attends the single reed day at Wells Cathedral School.



Here they are on their residential at Pixies Halt.

The committee is determined to ensure that as many young people as possible can access our service. To this end we

- operate a bursary system remitting subscriptions in cases of financial hardship;
- subsidise the cost of our residential weekends; and
- have adopted an equal opportunities policy.

Everyone is welcome³ at The Music Centre without regard to gender, religion, sexuality, or ethnicity.

Low Membership Fees for beginner musicians.

Low membership fees are also important to us. The Music Centre is pleased to implement a scheme to support free membership for those in receipt of free school meals, funded by Devon and Torbay Music Education Hub. It has also made it possible to offer membership of Fast Forward groups (for very young musicians) for £25 a term.

³ “...giving children of all ages and abilities the chance to take part.”

Review of Developments and Achievements

Rehearsals, Concerts and Events

Summer Term 2022

This term was very busy with Our Concert Orchestra enjoying playing at The Mix on 18th June at Killerton House, Exeter.



Our Flute Choir played beautifully at The Devon County Show 2nd July and Peninsula Clarinet Choir also played a great set of music there too.



The weather held for our outdoor concert Friday 8th July 2022. All the groups played well and enjoyed the relaxed setting on the Terrace at TBGS.



Mid Summer Music Event 2022

This successful event again enabled children of 7-18 years to come to try orchestral instruments with our tutors giving workshops and master classes on each of the four instrument families. We had 36 children over the 3 day event. We also had some of our current members helping out with the workshops and performing in the master classes



Autumn Term 2022



Fantastic Concert held on Friday 2nd December 2022 in Centenary Hall TBGS.

Spring Term 2023

Highlights included:

Indoor Concert 24th March TBGS with Peninsula Clarinet Choir joining the other Music Centre ensembles.

Tom Ward (Violin) playing Czardas by Vittorio Monti written in 1904

Prize winner at this year's Torbay Music Festival Solo with piano accompaniment.

Matthew Cusworth had recently recorded the piece with the Youth Strings for his GCSE Music portfolio. Sonata No 6 in B flat major 1st movement 'Preludio: Largo' for Violoncello by Antonio Vivaldi arr. Vincent Dindy. Soloist Matthew Cusworth



Members

Involving as many young people as possible in our work has long been a priority for the committee and we are determined to see our membership increase.

Fast Forward⁴

To this end we have undertaken a number of projects, including satellite groups, to reach out to primary schools in the Bay. The Music Centre has built on the success of the established “Fast Forward” group aimed at primary school children. This group has attracted very young people, learning to play musical instruments for the first time. We have been delighted to welcome these new members both to weekly rehearsals and to the termly concerts where they have done themselves proud.

This year this took the form of an Orchestra for All, based on our existing Fast Forward group, now held on Tuesdays after school from 4-5pm at Oldway Primary School in Paignton and from September 2021 on Thursdays after school in Brixham at Brixham College. The locations gave children, who found transport to the Torquay main Music Centre, the opportunity to join us. These children joined together with the Fast Forward group from Music Centre to perform in the Summer, Autumn and Spring concerts. We continue to build on these numbers.

We are also pleased to report that a number of these younger students have progressed sufficiently to become full members of The Music Centre and join more advanced groups.

⁴ “We really enjoy being part of the Music Centre family.”



As always, our members continue to impress. Congratulations to all those who passed grade exams this year:

Samson Spooner (percussion), Ella Sedgeman (Drums), Arthur Eastman (Tuned Percussion), Alex Randell (violin), Issac Brown (Saxophone), Daisy Whittaker (Saxophone), Meredith Cooke (Flute), Hannah Spear (Piano), Scarlett Ito- Grayson (Saxophone), Seren Hickman-Heritage (Cello)..

Special congratulations go to Ben German for passing Grade 8 (Percussion -snare drum), and Daniel Spear (Alto Saxophone) and Hannah Spear (Flute) for passing their ARSM Diplomas.

Communication with all our members continues to be key. We have continued to develop our online membership forms and emails and social media have proved invaluable to the continuation of our provision. Future online communication and website development will be part of our plans looking forward.

Adult participation in centre activities continues, with appropriate regard to our safeguarding policy. The presence of adults strengthens the family atmosphere of the Centre, using work skills to benefit the charity. The committee is grateful for time and effort given.

Alumni News

Our congratulations and best wishes also go to former members

- Jack Oades (violin), who was the winner of the Buckfast Abbey Millennium Composition Competition;



- Ellie Kendall (flute and sax), who, as part of her master's degree, has played with the Gothenburg and Helsingborg Symphony Orchestras;
- Jake Downs (viola), continuing doctoral musicology research at Sheffield University;
- Jason Hill (clarinet), graduating with a master's in orchestral performance at the Royal Welsh College of Music and Drama, and performing with the National Orchestra of Wales;
- Sophie Williams (cello), at the Royal Welsh College, studying music;
- Sebastian Boot (clarinet), now studying music at Cardiff University;
- Sebastian Boot (Clarinet), one of our past Young Musician of the Year composed and then conducted music at the Peninsula Clarinet Choir residential 2022.
- Poppy Bell (violin), now in the Royal Marines Band Service;
- Hannah Capstick (flute), now studying music at the University of Oxford.



"As a previous member of the Music Centre, attending for 8 years, I am full of gratitude for all the Music Centre has done to further and encourage my musical education." – Hannah Capstick

Our best wishes go to all those who are applying to university this year and wish them every success in their studies and music making.

Staff⁵

The trustees are convinced of the importance of recruiting and retaining highly qualified staff, who are as passionate about music education as the committee itself.

Brass Ensemble	Hannah Spooner BMus(hons) GRNCM PGCE (secondary music)
Percussion Ensemble	Colin Bellworthy BMus(Hons) ATCL LTCL FTCL
Fast Forward Group (for very young musicians)	Tom Deam BA(Hons) PGCE Dip.ABRSM
Flute Choir	Claire Hindle BA(Hons)
Clarinet Choir	Marina Kummer BA(Hons) Cert.Ed.
Concert Orchestra	Helen Wills ALCM Suzuki Level 2
Youth Strings	Goska Kosmaczewska BA(Hons)
Youth Orchestra	Moir Devonport BEd (Hons)
Fast Forward Orchestra for All Oldway and Brixham	Louise Darvid BA(Hons) PGCE Mark Farin BA Moir Devonport BEd (Hons)
Peninsula Clarinet Choir	Marina Kummer BA(Hons) Cert.Ed Graeme Hardman BA(Hons) PGCE

Both Marina Kummer and treasurer, Deborah Blackmore, are established as arrangers and have a body of works in print. Marina is also the musician librarian at Dartington International Summer School.

As Faculty Leader for Creative Media at Brixham College, Graeme Hardman is an experienced classroom teacher and musician.

Tom Deam is a member of the Gustav Benzels Hot Club, a Gypsy Jazz / Klezmer band. He also once played fiddle for a colony of seals.

Marina Kummer plays with Torbay Symphony Orchestra and Moira Devonport is a member of Exeter Symphony Orchestra.

⁵ “The dedication of the staff is wonderful...”

We would like to thank the staff for their unfailing professionalism and good-natured support throughout the year, and hope they are looking forward to the next one as much as we are.

Volunteers

Our volunteers play a vital role in the life of The Music Centre and the trustees are very grateful for all the support they receive:

- The members of the committee are an invaluable sounding board;
- Our external advisors provide expert opinion;
- The first aiders help keep our members safe;
- Our team of concert volunteers sell tickets and provide refreshments, helping create the inclusive and welcoming atmosphere that our members enjoy.



All our volunteers are a source of enthusiasm and inspiration. The trustees couldn't manage without them, and we thank them all for their important contribution. More volunteers are always welcome.

The Clatworthy Legacy

In 2014, The Music Centre was very pleased to be awarded £10,000 from the estate of the late Mr Henry Clatworthy. This sum is dedicated to promoting the playing of the oboe, and related instruments, and to this end The Music Centre⁶ provides a specialist teacher to give subsidised tuition. We are actively looking for children to take up the oboe.

⁶ “...what an asset we have in South Devon!” - Stover School

Conventions, Conferences and Training

TSDMC was represented at the Devon and Torbay Music Conference held at Buckfast Abbey Conference Centre and flyers were given to participating music teachers from across the area.

Training has been undertaken on communications, safeguarding and website management.

Music Centre has invested more in DBS checks this year, not only making sure staff are checked but all of our trustees who are present at Music Centre as well. As we believe safeguarding is everyone's responsibility.

Music Education Hubs

Following the restructuring of the local Music Hubs, we have been glad to continue our collaboration with the Devon and Torbay Music Education Hub, working as one of their delivery partners. This relationship is strengthened by our staff members, Tom Deam and Lou Darvid being part of the board of the Hub.

The trustees would like to record their thanks to the Music Education Hub for all their support. We look forward to further collaboration in the years to come.

Financial Review - How We Spent Your Money

Expenditure

Our total expenditure for the year was £49.98k, considerably more than 2021/22 as we begin the 'new normal'.

As ever, staffing and premises costs form the bulk of our expenditure. We pride ourselves on the quality of our teaching, management and musicianship and make no excuse for the sums we spend. Our staff are our greatest asset.

The committee would like to thank Moira for her tireless work and all our staff for their patience during the course of the year.

Of course, our staff need a venue in which to work and, as always, premises hire has been a significant expense, this year amounting to £7.4K. This is because of the two extra venues and our summer event.

Of the £1.58K spent on administration and governance and insurance, a third of this cost is insurance. We appreciate the importance of protecting our members, the public and the charity's assets and take expert advice to ensure we have appropriate cover.

Income

Our total income for the year was £34.7K, with grants and donations (£20.49K) and members' subscriptions (£13.5K) our principle sources of funds. The committee has highlighted the lack of diversity in our income streams and addressing this risk to the charity continues to be a major focus in our risk management strategy.

The use of the gift aid scheme provides a welcome boost to our finances and we encourage our members to sign up to the scheme whenever possible.

Our Reserves - Where We Go Next

The trust holds both restricted and unrestricted reserves as detailed in the financial statements.

Unrestricted funds are held to:

- meet costs arising at short notice, such as instrument repairs;
- cover ongoing costs incurred in running Music Centre and the Clarinet Choir, including staff fees and premises hire; and
- meet the costs of projects as directed by the trustees.

Restricted reserves have been given to meet specific areas of expenditure as described in the financial statements.

The charity holds total reserves of £99k, of which £8k are restricted. The movement on and size of the reserves are described in the financial statements. Reserves are utilised as and when volunteers become available to undertake projects, with no fixed timescale.

Operating Costs

The trustees decided to hold our operating costs reserve at £27k to meet potential, unfunded operating costs. This represents 2 terms' costs and is intended to provide a financial breathing space if external funding is withdrawn.

Peninsula Clarinet Choir

Peninsula Clarinet Choir is expected to be financially self-supporting and generates, and spends, its own funds under the umbrella of The Music Centre.

Hiring Professional Musicians

This reserve was created following a donation of £4.3k from a generous benefactor. The committee is using this sum to extend the involvement of professional musicians with our young performers.

Double Reed Playing

The Clatworthy legacy of £8k will continue to provide opportunities for double reed playing.

Publicity and Communications

The committee is very aware that the members are the lifeblood of our organisation and that attracting new young musicians is vital. Accordingly, we set aside £5k to fund improvements to our literature and other publicity vehicles. In 2015/16 we revised our graphics and invested in more advertising opportunities. In 2016/17, we commissioned a new website. This cost £1k.

In 2019/20, The Music Centre commissioned a promotional video which is now being used on social media, at conferences and in schools.

We are further developing our digital reach and are using Facebook and Instagram to take our message to a wider audience.

In 2021/22 we launched a summer event Mid-Summer Music which was aimed at promoting Music Centre to none musicians.

Refreshing this reserve will be considered at forthcoming trustees' meetings, taking account of the current needs.

Residential Weekends

Residential weekends provide a welcome and valuable opportunity for members to spend time with like-minded friends and to focus on their playing for extended periods. They are also a forum in which young musicians can learn from, and interact with, professional players in an informal environment. The committee is keen to support these events and make them accessible to as many students as possible.

In order to make our reserves work as hard as possible for us, the committee has invested £20k in an ethical fund managed by a specialist provider. The choice of amount and the nature of the fund reflects the trustees' investment policy: £20k is sufficient to increase the diversity of our assets, without incurring excessive risk. As at 5.4.23 worth £31.558

The Committee and Trustees - Who We Are

The Music Centre committee has a number of different elements, all working together for the furtherance of the charity's aims. The ethos has always been one of inclusive, happy and equal collaboration, something for which the trustees are very grateful.

The members of the committee during the year were:

Chair and trustee	Lisa Portch
Treasurer and trustee	Martin Hill DipPFS
Member and trustee	Elizabeth James BA(Hons) PGCE
Member and trustee	Marie Tanton M.Litt
Member and trustee	Dr Anne Fairey BM FRCP FFPM
Member and Manager	Moira Devonport BEd (Hons)
Member and primary education representative	Louise Darvid BA(Hons) PGCE
Member and staff representative	Marina Kummer BA(Hons) Cert.Ed.
Member and secondary education representative	Graeme Hardman BA(Hons) PGCE

The committee devises the strategic direction of the trust, and the manager works under the direction of the committee. However, all responsibility for the management and conduct of the charity rests with the trustees alone.⁷

Committee members advise the trustees in their decision making, bringing a wider range of views and professional opinion to the table. No formal roles are assigned to committee members in recognition of their other responsibilities, away from The Music Centre, but their support is invaluable.

Trustees are appointed at a special meeting, serving for a period of three years. In making new appointments, the existing trustees take into account the residence, employment, occupation and specialist knowledge or personal qualifications of each candidate.

All the trustees and committee members give their time for free and no remuneration or expenses are paid to them. As a committee, we are always pleased to receive expressions of interest and are happy to discuss membership further.

⁷ "...well led and managed and offers excellent progression opportunities..."

Advisors

Safeguarding ⁸	Lisa Barker-Jones BA(Hons) Diploma in Social Work
Insurance	Making Music.
Banking	Lloyds TSB plc
Independent Examiner	Robert Pethick SRP Durbarry Accountants

⁸ “...secure and positive...”

Governance - How We Work

Contact details:

Web	http://tsdmc.org.uk
Email	torbayandsouthdevonmusiccentre@gmail.com
Facebook	https://www.facebook.com/TSDMusicCentre
Instagram	torbaymusiccentre
Telephone	07862 922739
Post	c/o Torquay Boys' Grammar School, Shiphay Manor Drive, Torquay, TQ2 7EL

Legal Status

Torbay and South Devon Music Centre is a charitable trust, constituted by deed, and registered with the Charity Commission and HM Revenue and Customs.

Other Memberships, Affiliations and Registrations

Arts Council England
National Council for Voluntary Organisations
South Hams Community and Voluntary Service
Small Charities Coalition
Making Music
LawWorks
National Centre for Diversity
Online Compass



Both the treasurer and manager report to the committee at each meeting, where members review the financial position and day-to-day running of The Music Centre. An annual budget is agreed at the start of each new financial year and used to monitor both income and expenditure as that year unfolds. The committee members make extensive use of Charity Commission guidance, and other resources, to inform their discussions and ensure they are acting in accordance with best practice and the public benefit.



Our Ethos

The committee has considered and adopted the seven principles of standards in public life or 'Nolan Principles'. These are:

- **selflessness:** Committee members have a duty to act in the best interest of the organisation as a whole. They should not do so in order to gain financial or other material benefits for themselves, their family, their friends or the organisations they come from or represent;
- **integrity:** Committee members should not place themselves under any financial or other obligation to outside individuals or organisations that might influence them in the performance of their duties;
- **objectivity:** In carrying out their duties, including making appointments, awarding contracts, or recommending individuals for rewards and benefits, committee members should make choices on merit;
- **accountability:** Committee members are accountable for their decisions and actions to the public, funders and service users. They must submit themselves to whatever scrutiny is appropriate to their role;
- **openness:** Committee members should be as open as possible about all the decisions and actions that they take. They should give reasons for their decisions and restrict information only when the wider public interest clearly demands;
- **honesty:** Committee members have a duty to declare any interests relating to their role and to take steps to resolve any conflicts arising in favour of their trustee role; and
- **leadership:** Committee members should promote and support these principles by leadership and example.

(Source: National Council for Voluntary Organisations)

Risk Management

The trustees are responsible for identifying and managing risks faced by The Music Centre and are assisted in this by the committee and external advisors. At present, the areas of highest risk are considered to be:

risk	mitigated by
<p>Safeguarding – As young people, our beneficiaries are vulnerable and this is an ongoing risk we face. The committee fully appreciates the importance of maintaining best practice in this area.</p>	<p>Involvement of a qualified practitioner to advise the committee. In 2018, we undertook an in-depth review of our policy and procedures, which produced more detailed protocols. These have been communicated to both staff, beneficiaries and their parents. This is updated annually and all staff and trustees are expected to keep up to date with policies and procedures as safeguarding is everyone's responsibility. Safeguarding is also a standing item on our meeting agendas, to ensure that any issues arising are identified and addressed as soon as possible.</p>
<p>Over dependency on public funding – Public funding is subject to unpredictable changes in policy and direction, which are beyond our control.</p>	<p>The committee believes in taking a holistic and proactive approach to promoting the future viability of the charity. We have implemented a reserves policy which allows for the possibility that funding will be withdrawn. We are also actively pursuing alternative sources of income, including applying to grant making trusts. In tandem with this, the committee is building up expertise in the areas of impact measurement and evidence gathering. These tools should aid us in demonstrating our worth to current and potential supporters.</p>
<p>Trustee recruitment - We are conscious that, as a small body, our pool of resources is limited and that succession planning is problematic.</p>	<p>Following successful appeals, we recruited three new trustees to join us in 2022. They bring welcome expertise in primary education, local music networks and grant funding opportunities. We will be appealing for more trustees this year.</p>

All areas of significant risk are addressed on an annual basis.

During the course of the year, the committee also considered the following issues:

- communication with funders and supporters
- stakeholder feedback, including improved dialogue with our staff
- promoting the playing of 'endangered instruments'
- evidencing the charity's work and the helpfulness of measuring outcomes
- data protection, the use of digital technology and preparing for GDPR
- conflicts of interest
- progression and continuation following on from a child's first access to music education
- the security of charity assets
- their policy on reserves.

External Scrutiny

In 2019, The Music Centre was subject to evaluation by staff from the Devon Music Education Hub who concluded that,

'With a well-established weekly music centre, providing a variety of ensemble and progression activities, a strong offer is in place for children and young people drawn from schools across Torbay, South Devon and as far as Plymouth and Cornwall. An experienced team of specialist instrumental teachers provide high quality experiences, with many students progressing to an advanced level of ability and some choosing to pursue music further through county groups and/or further studies.'

Statement of the Responsibilities of the Trustees

The trustees are required to comply with their obligations under the Charities Act 2011 and the declaration of trust to

- keep accounting records;
- prepare annual statements of account;
- present these statements for audit or independent examination;
- prepare an annual report; and
- provide the Charity Commissioners with such information as is required by law.

Gift Aid

Every £1 a UK taxpayer pays in membership subscriptions	allows The Music Centre to claim 25p from the taxman, providing you sign a gift aid declaration.
This costs you nothing	but earns us £2-3k each year, which goes towards paying for our premises.
Please sign up if you can	

How You Can Help

Donate	All donations, large and small, are always welcome and help us maintain financial sustainability.
Volunteer	We can always use more help, particularly at concerts.
Join the committee	An informal commitment where you can contribute as much or little as you feel able.
Become a trustee	We meet 6 times a year and attendance is expected of trustees. We lighten the load by making the meetings as sociable and informal as possible.

If you would like to know more about us and our work, please speak to Moira.

Public Benefit

The trustees confirm that they have had due regard to the Charity Commission guidance on public benefit when determining the activities of the trust.



Basis of Preparation

This report has been prepared in accordance with the Charities Act 2011.

Lisa Porch
Chair
23rd January 2024

Martin Hill DipPFS
Treasurer⁹
23rd January 2024

For and on behalf of the committee.

⁹ “Fantastic!”

Independent examiner's report

Independent examiner's report

I report on the accounts of the trust for the year ended 5th April 2023, which are set out on pages ~~XX to XX~~: **2 - 6**

Respective responsibilities of trustees and examiner

The charity's trustees are responsible for the preparation of the accounts. The charity's trustees consider that an audit is not required for this year under section 144(2) of the Charities Act 2011 (the 2011 Act) and that an independent examination is needed.

It is my responsibility to:

- examine the accounts under section 145 of the 2011 Act;
- to follow the procedures laid down in the general Directions given by the Charity Commission under section 145(5)(b) of the 2011 Act; and
- to state whether particular matters have come to my attention.

Basis of independent examiner's report

My examination was carried out in accordance with the general directions given by the Charity Commission. An examination includes a review of the accounting records kept by the charity and a comparison of the accounts presented with those records. It also includes consideration of any unusual items or disclosures in the accounts, and seeking explanations from you as trustees concerning any such matters. The procedures undertaken do not provide all the evidence that would be required in an audit and consequently no opinion is given as to whether the accounts present a 'true and fair view' and the report is limited to those matters set out in the statement below.

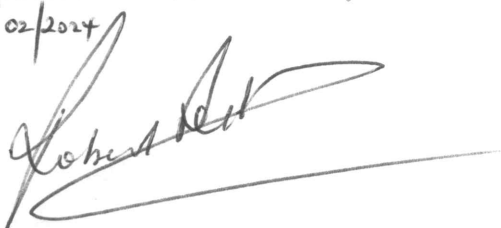
Independent examiner's statement

In connection with my examination, no matter has come to my attention which gives me reasonable cause to believe that in any material respect the requirements:

- to keep accounting records in accordance with section 130 of the 2011 Act; and
- to prepare accounts which accord with the accounting records and comply with the accounting requirements of the 2011 Act have not been met;
- or to which, in my opinion, attention should be drawn in order to enable a proper understanding of the accounts to be reached.

Name: Robert Pethick, SRP Dubarry Accountants.

Date: **01/02/2024**



Income and Expenditure Account for the Year Ending 5th April 2023

		Unrestricted Funds	Restricted Funds	2022	2021
	notes	£	£	£	£
Income					
grants and donations	2	20,482	-	32,818	26,032
members' subscriptions	3	13,508	-	8,529	2,280
concert proceeds	4	546	-	539	-
sundries		168	-	48	6
Total income		34,704	-	41,934	28,318
Expenditure					
tuition costs	5,6,7	23,576	-	19,726	12,508
manager's fee		14,064	-	12,375	12,245
premises hire	8	7,427	-	2,654	660
administration		698	-	713	620
insurance		539	-	762	762
working with professional musicians		698	-	735	-
governance		342	-	230	-
repairs and music consumables		-	-	368	-
Instrument purchase		2,458	-		
sheet music and hire		185	-	112	43
Total expenditure		49,986	-	37,675	26,838
Net movement in cash funds		(15,281)	-	4,259	1,480
Cash funds brought forward		87,197	8,051	90,989	
Cash funds carried forward		71,916	8,051	95,248	90,989

Statement of Assets and Liabilities at 5th April 2023

		Unrestricted Funds	Restricted Funds	2023	2022
	notes	£	£	£	£
cash at bank		51,917	8,051	79,966	75,249
Investment - CCLA		31,558		31,558	20,000
postage stamps		25	-	25	25
tuck shop stock		70	-	70	70
fixed assets held for charity's own use	10	7,471	-	7,471	5,600
Total assets		91,041	8,051	99,092	100,944

Approved by the trustees and signed on their behalf.



Lisa Portch Chairman 2023



Martin Hill DipPFS Treasurer 2023

Notes to the Accounts

1. Accounting Policies

These accounts have been prepared on a receipts and payments basis, under the historic cost convention and in accordance with the relevant sections of the Charities Act 2011. The accounting policies have been applied consistently throughout the current and previous periods.

Depreciation

Provision for depreciation of fixed assets is made at the following rates based on the estimated useful life of these assets and their residual value:

Instruments	5% of cost per annum
Vehicles and other equipment	25% of cost per annum.

Tuck shop stocks

Stocks for resale are valued at the lower of cost and net realisable value.

Unrestricted and restricted funds

Unrestricted funds consist of the general purposes fund and designated funds. Designated funds are funds established by the committee from time to time for specific projects or purposes and are not in any way restricted. Any surplus or deficit will be transferred to/from the general purposes fund when the designated fund is closed.

Restricted funds are funds subject to specific restrictions imposed by the donors or by the purpose of the appeal.

2. Grants and Donations (note 2)

	2022	2022
	£	£
Grants	20,000	32,500
Donations	482	318
Legacy from a generous benefactor	-	
	20,482	32,815

3. Subscriptions

The priority of the committee was to encourage as many young people as possible to come to music centre. We continue to develop our Fast Forward groups in Brixham and Paignton and through our Summer School event.

We charged subscriptions for 3 full terms in 2022-23.

4. Concert Proceeds

Concert proceeds were higher for this year due in part to higher fast forward participation and are included in these accounts.

5. Tuition Costs

	2023	2022
Total Tuition costs	£23,575	£19,726

Tuition costs were higher in this year due to inflationary rises and additional tuition time.

6. Employees

There were no employees during the year (2022: none).

10. Fixed assets

	Instruments	other equipment	total
	£	£	£
Cost			
At beginning of year	11,735	1,437	13,172
Additions	2,458	-	-
Disposals	-	-	-
At end of year	14,193	1,437	15,630
Depreciation			
At beginning of year	6,135	1,437	7,572
Charge for the year	587	-	-
Disposals	-	-	-
At end of year	6,722	1,437	7,572
Net Book Value			
At 5th April 2023	7,471	-	7,471
At 5th April 2022	5600	-	5600

Note 1

Investments

An investment has been made in CCLA (in accordance with the charity's investment policy). The investment has been revalued at the end of the year at the market rate

11. CCLA Investment	2023	movement in year	2022
	£31,558	£11,558	£20,000

The CCLA investment has been revalued at the year end at the closing bid price at 5th April 2023. The amount is unrestricted

Committee Expenses and Benefits

Moira Devonport, Graeme Hardman and Marina Kummer were remunerated for their work as members of staff. No other payment was made to committee members.

Independent examiner's report

I report on the accounts of the trust for the year ended 5th April 2023, which are set out on pages ~~XX to XX~~: **2 - 6**

Respective responsibilities of trustees and examiner

The charity's trustees are responsible for the preparation of the accounts. The charity's trustees consider that an audit is not required for this year under section 144(2) of the Charities Act 2011 (the 2011 Act) and that an independent examination is needed.

It is my responsibility to:

- examine the accounts under section 145 of the 2011 Act;
- to follow the procedures laid down in the general Directions given by the Charity Commission under section 145(5)(b) of the 2011 Act; and
- to state whether particular matters have come to my attention.

Basis of independent examiner's report

My examination was carried out in accordance with the general directions given by the Charity Commission. An examination includes a review of the accounting records kept by the charity and a comparison of the accounts presented with those records. It also includes consideration of any unusual items or disclosures in the accounts, and seeking explanations from you as trustees concerning any such matters. The procedures undertaken do not provide all the evidence that would be required in an audit and consequently no opinion is given as to whether the accounts present a 'true and fair view' and the report is limited to those matters set out in the statement below.

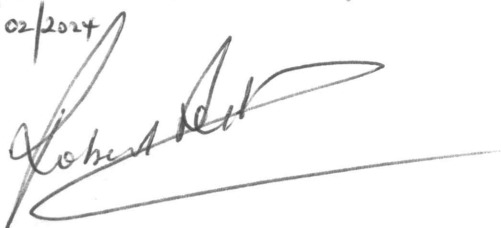
Independent examiner's statement

In connection with my examination, no matter has come to my attention which gives me reasonable cause to believe that in any material respect the requirements:

- to keep accounting records in accordance with section 130 of the 2011 Act; and
- to prepare accounts which accord with the accounting records and comply with the accounting requirements of the 2011 Act have not been met;
- or to which, in my opinion, attention should be drawn in order to enable a proper understanding of the accounts to be reached.

Name: Robert Pethick, SRP Dubarry Accountants.

Date: **01/02/2024**



Income and Expenditure Account for the Year Ending 5th April 2023

		Unrestricted Funds	Restricted Funds	2022	2021
	notes	£	£	£	£
Income					
grants and donations	2	20,482	-	32,818	26,032
members' subscriptions	3	13,508	-	8,529	2,280
concert proceeds	4	546	-	539	-
sundries		168	-	48	6
Total income		34,704	-	41,934	28,318
Expenditure					
tuition costs	5,6,7	23,576	-	19,726	12,508
manager's fee		14,064	-	12,375	12,245
premises hire	8	7,427	-	2,654	660
administration		698	-	713	620
insurance		539	-	762	762
working with professional musicians		698	-	735	-
governance		342	-	230	-
repairs and music consumables		-	-	368	-
Instrument purchase		2,458	-		
sheet music and hire		185	-	112	43
Total expenditure		49,986	-	37,675	26,838
Net movement in cash funds		(15,281)	-	4,259	1,480
Cash funds brought forward		87,197	8,051	90,989	
Cash funds carried forward		71,916	8,051	95,248	90,989

Statement of Assets and Liabilities at 5th April 2023

		Unrestricted Funds	Restricted Funds	2023	2022
	notes	£	£	£	£
cash at bank		51,917	8,051	79,966	75,249
Investment - CCLA		31,558		31,558	20,000
postage stamps		25	-	25	25
tuck shop stock		70	-	70	70
fixed assets held for charity's own use	10	7,471	-	7,471	5,600
Total assets		91,041	8,051	99,092	100,944

Approved by the trustees and signed on their behalf.



Lisa Portch Chairman 2023



Martin Hill DipPFS Treasurer 2023

Notes to the Accounts

1. Accounting Policies

These accounts have been prepared on a receipts and payments basis, under the historic cost convention and in accordance with the relevant sections of the Charities Act 2011. The accounting policies have been applied consistently throughout the current and previous periods.

Depreciation

Provision for depreciation of fixed assets is made at the following rates based on the estimated useful life of these assets and their residual value:

Instruments	5% of cost per annum
Vehicles and other equipment	25% of cost per annum.

Tuck shop stocks

Stocks for resale are valued at the lower of cost and net realisable value.

Unrestricted and restricted funds

Unrestricted funds consist of the general purposes fund and designated funds. Designated funds are funds established by the committee from time to time for specific projects or purposes and are not in any way restricted. Any surplus or deficit will be transferred to/from the general purposes fund when the designated fund is closed.

Restricted funds are funds subject to specific restrictions imposed by the donors or by the purpose of the appeal.

2. Grants and Donations (note 2)

	2022	2022
	£	£
Grants	20,000	32,500
Donations	482	318
Legacy from a generous benefactor	-	
	20,482	32,815

3. Subscriptions

The priority of the committee was to encourage as many young people as possible to come to music centre. We continue to develop our Fast Forward groups in Brixham and Paignton and through our Summer School event.

We charged subscriptions for 3 full terms in 2022-23.

4. Concert Proceeds

Concert proceeds were higher for this year due in part to higher fast forward participation and are included in these accounts.

5. Tuition Costs

	2023	2022
Total Tuition costs	£23,575	£19,726

Tuition costs were higher in this year due to inflationary rises and additional tuition time.

6. Employees

There were no employees during the year (2022: none).

10. Fixed assets

	Instruments	other equipment	total
	£	£	£
Cost			
At beginning of year	11,735	1,437	13,172
Additions	2,458	-	-
Disposals	-	-	-
At end of year	14,193	1,437	15,630
Depreciation			
At beginning of year	6,135	1,437	7,572
Charge for the year	587	-	-
Disposals	-	-	-
At end of year	6,722	1,437	7,572
Net Book Value			
At 5th April 2023	7,471	-	7,471
At 5th April 2022	5600	-	5600

Note 1

Investments

An investment has been made in CCLA (in accordance with the charity's investment policy). The investment has been revalued at the end of the year at the market rate

11. CCLA Investment	2023	movement in year	2022
	£31,558	£11,558	£20,000

The CCLA investment has been revalued at the year end at the closing bid price at 5th April 2023. The amount is unrestricted

Committee Expenses and Benefits

Moira Devonport, Graeme Hardman and Marina Kummer were remunerated for their work as members of staff. No other payment was made to committee members.