

REGISTERED COMPANY NUMBER: 03491993 (England and Wales)
REGISTERED CHARITY NUMBER: 1068467

REPORT OF THE TRUSTEES AND
UNAUDITED FINANCIAL STATEMENTS
FOR THE YEAR ENDED 31 MARCH 2025
FOR
FOCUS CHARITY
(A COMPANY LIMITED BY GUARANTEE)

TC Group
31 High View Close
Hamilton Office Park
Leicester
Leicestershire
LE4 9LJ

FOCUS CHARITY
CONTENTS OF THE FINANCIAL STATEMENTS
FOR THE YEAR ENDED 31 MARCH 2025

	Page
Report of the Trustees	1 to 8
Independent Examiner's Report	9
Statement of Financial Activities	10
Balance Sheet	11
Notes to the Financial Statements	12 to 19
Detailed Statement of Financial Activities	20

FOCUS CHARITY
REPORT OF THE TRUSTEES
FOR THE YEAR ENDED 31 MARCH 2025

The Trustees (who are also directors of the charity for the purposes of the Companies Act) present their annual report together with the financial statements of FOCUS Charity (the Charity) for the year ended 31 March 2025. The Trustees confirm that the Annual Report and financial statements comply with the current statutory requirements, the requirements of the Charity's governing document and the provisions of the Statement of Recommended Practice (SORP), applicable to charities preparing their accounts in accordance with the Financial Reporting Standard applicable in the UK and Republic of Ireland (FRS 102) (effective 1 January 2019).

Since the company qualifies as small under section 383, the strategic report required of large and medium companies under The Companies Act 2006 (Strategic Report and Director's Report) Regulations 2013 is not required.

On 13th January 1998 FOCUS Charity was incorporated under the Companies Act as a private limited company (company number 3491993), governed by a Memorandum and Articles of Association and on the 5th March 1998 was registered as a charity (registered number 1068467). On the 1st July 1998 the new company absorbed the assets, liabilities and activities of FOCUS, the previous charitable trust, whose net funds amounted to £83,869.

On 1st October 1993 FOCUS had been constituted under a Trust Deed and registered as a charity (registered number 1028637). As of that date the Trust absorbed the assets, liabilities and activities of the Bridge Programme whose net funds amounted to £65,900.

Please note

Further copies of our Annual Report and Financial Statements 2024, and other documents relating to FOCUS can be downloaded from our website:

www.focus-charity.co.uk

or obtained from our office:

FOCUS, 73 Church Gate, Leicester, LE1 3AN. Tel: 0116 251 0369

Financial review

On 1 April 2024, FOCUS' unrestricted reserves stood at £13,328. By 31 March 2025, the unrestricted fund stood at £39,400, which is considered sufficient to cover 6 months of liabilities. The Trustees aim to maintain a level of unrestricted reserves equivalent to three to six months of unrestricted expenditure throughout 2025/26 and have implemented actions to address this.

At the time of signing this Annual Report, the organisation has secured sufficient funding to cover all planned expenditure for a period of at least 6 months, which, along with a fundraising and income generation plan that is in place, provides sufficient projected income for at least 12 months.

FOCUS CHARITY
REPORT OF THE TRUSTEES
FOR THE YEAR ENDED 31 MARCH 2025

OBJECTIVES AND ACTIVITIES

Objectives and aims

The following statements were created in consultation with key stakeholders in 2018:

Our Purpose (or 'what brings us together'):

We passionately believe that young people have the potential to create change

Our Vision (or 'where we want to be'):

We aim to become the 'go to' organisation to support young people. We will achieve this by living our values, learning from the best, supporting one another, shouting about our impact, leading the way and becoming the best youth organisation we can be.

Our Mission (or 'what we strive to achieve'):

We inspire young people to believe in themselves, because we believe in them and their capacity to create positive change in themselves and their communities

Our Values and Behaviours

- * We believe in young people and the potential they possess
- * We create powerful and life-changing opportunities for young people
- * We create an environment where young people feel loved and appreciated
- * We work with integrity and honesty

FOCUS CHARITY
REPORT OF THE TRUSTEES
FOR THE YEAR ENDED 31 MARCH 2025

OBJECTIVES AND ACTIVITIES

Objectives, strategies and activities

During 2024/25 we worked with a total of 282 young people during 330 group sessions and 170 one-to-one support sessions across 4 distinct projects: Inspire, Leicestival, Breathing Space, and Facing the Future. Evaluation of the impact of participating in our projects demonstrated that during the year:

- * 88% of young people felt more confident in their own abilities than they did before they joined us
- * 83% felt more positive about what they could achieve in future as a result of taking part in Focus project
- * 100% could describe new skills they had developed with us
- * 84% felt generally happier as a result of being involved with Focus
- * 81% reported a greater sense of belonging to the area in which they live
- * 82% had increased the amount of volunteering they engaged in

This year we have increased the number of group sessions we've delivered for young people in response to our observations of their needs and what they've expressed to us. This has been enabled by the long-term commitments made to us by our major funders and the flexibility that our diverse income streams provide. It has enabled us to ensure that no young person is left unsupported and that we are able to work with them for as long as they need us.

Inspire

Inspire is a year-long personal development programme for young people aged 13-16. It is funded primarily by the National Lottery Fund through their Reaching Communities grant scheme and comprises a series of activities, youth-led community projects, workshops, and mentoring support, and a short residential event. This year 46 young people took part on a regular basis, which includes those completing the project who joined us in 2023/24 and those recruited during 2024/25. A further 226 young people were reached by the project through a series of community projects such as our Halloween and Christmas events.

During the year, we sought to provide young people with a range of voices and influences. We collaborated with a number of other organisations, notably through the Violence Reduction Network. Young people also learned first aid and how to respond to someone who is bleeding, courtesy of the NHS Street Doctors. The SHUSH Project taught our young people better sexual health. Meanwhile, workshops by Rose Alchemy CIC helped them identify and understand cycles of trauma-related experiences.

Breathing Space

Breathing Space focuses on the enormous benefits of working in green spaces for young people facing mental health issues. The project takes place at our unique 'Wooden Spoon Allotment' in the Evington area of Leicester, which has become an outdoor classroom for young people, away from the pressures of their usual urban environments.

We have continued to support the ever-growing number of young people experiencing mental health issues and their debilitating impact on their everyday lives and future prospects. Throughout the year, 40 young people took part in activities through Breathing Space.

We provided a regular opportunity every Friday and during half-term holidays for young people and volunteers to maintain the site, grow fruits, vegetables and flowers, and to meet with and support other allotment holders.

Leicestival

Funded primarily by the Heritage Lottery Fund, *Leicestival* provides opportunities for young people to develop a range of heritage skills by engaging in some of the diverse range of festivals and cultural events that the city is becoming renowned for. 86 young people took part during the year, working alongside organisers of events including the Riverside Festival and the new Walking Festival. The latter provided an opportunity for young people to provide free guided tours of some of Leicester's unique architecture.

A key highlight, and the major focus of our year was the design and delivery of a 'youth-led festival'. This allowed project beneficiaries to put the skills, knowledge and attributes they had developed throughout the project and through attending a series of other festivals into practice. Held over two days and taking over large areas of the Haymarket Shopping Centre, the festival attracted over 1,500 members of the public and was used to showcase not only Focus's activities, but also those of other organisations, including University of Leicester, Pedestrian Arts, Leicester City Council, Leicester City FC, Zam Zam, and many more.

FOCUS CHARITY
REPORT OF THE TRUSTEES
FOR THE YEAR ENDED 31 MARCH 2025

OBJECTIVES AND ACTIVITIES

At the heart of the youth-led festival was our 'Zen Den', through which we provided advice and support to young people, and other members of the public, about the range of mental health support available through the city. This was enabled through additional funding from Leicester City Council's Public Health department.

Facing the Future

Launched in March 2024, Facing the Future enables us to recruit, train and support volunteers to provide support to young people in mental health crisis. They work within our other projects, responding to young people that we identify as being in need of support, or who approach us in crisis. In addition to supporting young people in our own projects, the volunteers also use their skills and knowledge to support others they meet within the wider community.

The volunteers and our staff team met monthly to offer and receive support, to share their experiences and to develop a range of group activities that promote positive mental health, resilience and wellbeing for young people at Focus and beyond.

In the first year of the project we trained 20 volunteers, who were able to provide support to 112 young people through 232 individual interventions. Additionally, they delivered activities for families as part of the Zen Den at our Leicestival festival.

Other Activities

In addition to our main projects and programmes, we also undertook a range of other activities during the year.

'Focus TV' is led by two of our volunteers, who bring their professional skills in video production to develop young people's technical skills and story-telling by creating short videos that we use for promotion and to capture the journeys that our volunteers and beneficiaries experience through our projects.

Increasingly over the past few years, we have been approached by parents to provide advice and support. Throughout the year, we provide informal advice and regular check-ins to address themes including education, managing relationships, navigating local authority services, and addressing mental health needs (of both young people and their parents).

Our project staff are all C-Card trained. This means that they are able to provide sexual health and contraception advice, as well as free condoms. We provide this for all young people, regardless of their age, provided they can satisfy us that they meet the 'Gillick Competence' requirements and can make informed decisions safely.

To ensure that 'period poverty' does not prevent any young people from accessing our projects, we provide free sanitary products for anyone in our building who needs them. They don't need to ask for these, they are provided with open access.

As a legacy of our previous involvement with the national organisation, Cinema for All, we have hosted and arranged hire of a set of high quality, audio-visual equipment for local community groups to be able to host their own cinema events. We are not paid for this work and do this as part of our commitment to the community.

Our Chief Executive continues to serve as a voluntary sector representative on the Leicester Children's Trust Board. Meeting bi-monthly, this forum brings together heads of service of all the major children's and youth people's services including health, education, social care, youth justice, benefits agencies, youth work, and others.

Our commitment to the environment is laid out in our Sustainability Policy. This has enabled us to address our wish to become a greener organisation by reducing our carbon emissions, reducing our waste and water usage, and contributing towards improvements to the environment. We have implemented a number of actions and activities this year, including converting (with the generous support of Glenfield Electrical) the lighting in our office to energy efficient LED, and arranging for our energy provider to supply electricity from 100% renewable sources.

FOCUS CHARITY
REPORT OF THE TRUSTEES
FOR THE YEAR ENDED 31 MARCH 2025

OBJECTIVES AND ACTIVITIES

Fundraising Disclosures

During 2024/25, we continued to focus our fundraising activities on our strategy of diversifying our income sources, and we have enjoyed some success in attracting new funding from our traditional trusts and foundation sources as well as from individuals, businesses and local government.

Notably, we received additional funding from National Lottery Community Fund, over and above our project grant, to implement our fundraising strategy and to address the impact of the volatile UK economy during the year. We have invested some of this in working with a fundraising consultancy to identify new avenues for income generation and improving our success rate in funding applications. We will continue to work with them throughout 2025/26.

Overall, our income this year has increased by 4% on the previous year.

Our priority during 2025/26 remains to continue to diversify our income sources and to work with new and existing funding sources to develop longer-term relationships and to identify areas of collaboration and to address the issues facing young people together.

Public benefit

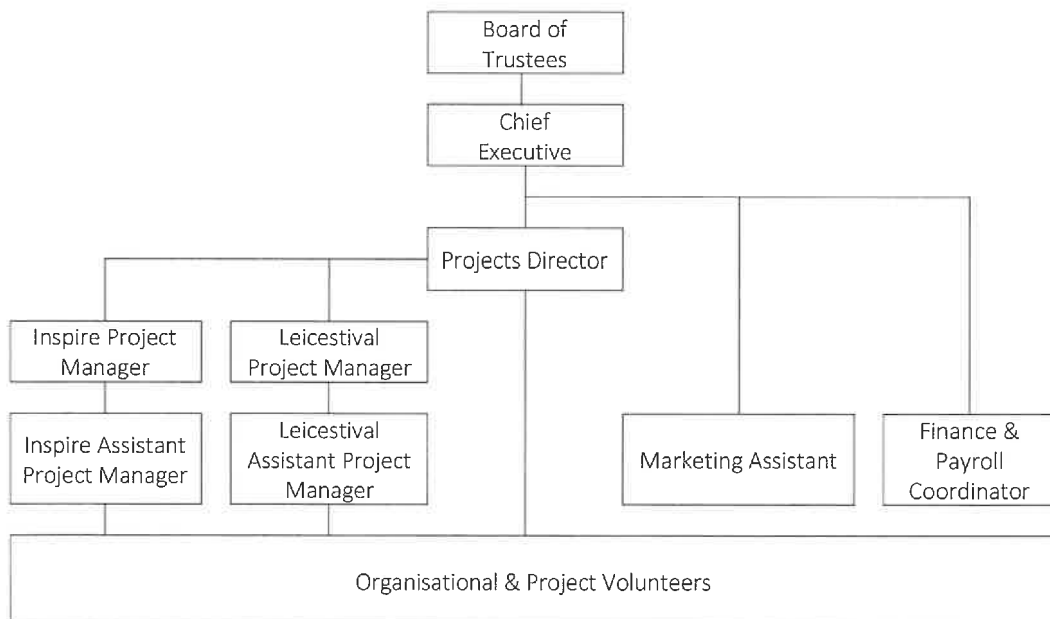
All of FOCUS' activities, as described above, are provided for young people aged 13 - 25; with a specific focus on those from 'disadvantaged' backgrounds and those with additional support needs. Our activities all have charitable purposes and are for public benefit.

In planning our activities, the Trustees have given due consideration to general guidance published by the Charity Commission relating to public benefit.

STRUCTURE, GOVERNANCE AND MANAGEMENT

Governing document

The charity is controlled by its governing document, a deed of trust, and constitutes a limited company, limited by guarantee, as defined by the Companies Act 2006.



FOCUS CHARITY
REPORT OF THE TRUSTEES
FOR THE YEAR ENDED 31 MARCH 2025

STRUCTURE, GOVERNANCE AND MANAGEMENT

Recruitment and appointment of new members of the Board of Trustees

The recruitment and selection of new members of the Board of Trustees is the responsibility of the Board.

The selection process includes: Advertising positions as widely as possible in order to attract applicants from a range of backgrounds; Applicants are invited to submit their Curriculum Vitae, along with a supporting letter outlining their suitability for the role; ; Short-listed candidates are then invited to visit a project, to meet some of our beneficiaries, and to meet with staff and volunteers; they are then invited to attend a Board meeting as an observer; Following this, the Trustees meet to discuss each applicant and those who are felt to fulfil their criteria are invited to join the Board, subject to appropriate checks and references.

Trustees' induction is carried out on an individually tailored basis, taking account of previous knowledge of the organisation and the specific role performed by each new trustee.

Organisational structure

During 2024/25, 9 trustees governed FOCUS. They have a wide range of skills, backgrounds and experiences. In addition to attending quarterly board meetings, they also take on individual responsibilities, supporting functions such as fundraising, finance, and marketing.

Our Chief Executive and Projects Director form our Leadership Team.

During the year 47 volunteers, who took on both organisational and project roles, such as supporting the preparation of our programme materials, fundraising, and mentoring young people, additionally supported the organisation.

FOCUS CHARITY
REPORT OF THE TRUSTEES
FOR THE YEAR ENDED 31 MARCH 2025

STRUCTURE, GOVERNANCE AND MANAGEMENT

Plans for future periods

Aims and key objectives for future periods

Our Strategic Plan, which will guide our development over the next 4 - 5 years, was created in August 2023. It is reviewed regularly by our Leadership Team and Board of Trustees, with progress monitored and actions implemented to ensure that it remains valid.

The plan is intentionally light on detail, but provides a clear direction of travel, some key areas for development, and commitments to the quality of support we will provide to young people.

We are operating within an economic, political, and social environment that is uncertain, making the future difficult to predict. So, our strategy will be to remain agile and able to respond to the changing needs of young people, whilst maintaining our high standards and investing in the skills, knowledge and expertise of our staff and volunteers, and building our financial resilience.

The priorities we have identified for our strategy are:

" **To invest in our people** - ensuring a diversity of ideas, experience, knowledge and skills, and creating an inspiring and inclusive environment. This includes our commitments to embedding our 'Anti-Oppressive Practice' action plan, leading the way in ensuring high quality Safeguarding processes, further developing the diversity of our team to reflect their local area, developing robust succession plans for staff and trustees

" **To develop exceptional projects** - responding to the needs of young people, providing a balanced programme of activities and support, and maintaining our commitment to never turn a young person away. We will deliver the best impact for young people, developing the financial and other resources required to be open to young people every day, increasing our knowledge of and response to the mental health needs of young people, ensuring that our work has a minimal impact on the environment and promotes sustainability

" **To engage our supporters** - becoming the best known and best funded organisation we can be. Our plans include achieving greater financial sustainability, further developing our business network, securing more long-term funding relationships with trusts and foundations, building our following on social media, achieving national recognition for our local work

Each year, we create an annual Business Plan, which sets out our key objectives and targets to ensure we stay on track to achieve our priorities, balancing the ambitious and the realistic. For example, during 2025-26 we have set a specific goal to invest in the training of our volunteers, enabling them to develop their facilitation and leadership skills, thereby improving the quality of support we provide to young people.

REFERENCE AND ADMINISTRATIVE DETAILS

Registered Company number

03491993 (England and Wales)

Registered Charity number

1068467

Registered office

73 Church Gate
Leicester
Leicestershire
LE1 3AN

FOCUS CHARITY
REPORT OF THE TRUSTEES
FOR THE YEAR ENDED 31 MARCH 2025

Trustees

M J Bennett (Chair)
Ms A Ahmad (resigned 18.4.25)
R L Clarke (resigned 14.11.24)
D J Foley (resigned 18.4.25)
A D J Harris
H H Rao (resigned 25.4.24)
Ms L D Skinner (resigned 26.9.24)
Miss A E Tyers (Treasurer) (resigned 28.4.25)
Ms D Knight
Ms G D Richardson (appointed 18.7.25)
C Roach (appointed 1.5.25)
Ms P P Shah (appointed 1.5.25)
N A Thomson (appointed 18.7.25)
Ms H Williamson (appointed 24.7.25)
M A Boonham (appointed 18.7.25)

Company Secretary

M J Bennett

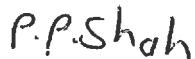
Independent Examiner

TC Group
31 High View Close
Hamilton Office Park
Leicester
Leicestershire
LE4 9LJ

Approved by order of the board of trustees on ^{30th} October 2025 and signed on its behalf by:



.....
Mr M J Bennett - Trustee



.....
Mrs P Shah - Trustee

**INDEPENDENT EXAMINER'S REPORT TO THE TRUSTEES OF
FOCUS CHARITY**

Independent examiner's report to the trustees of Focus Charity ('the Company')

I report to the charity trustees on my examination of the accounts of the Company for the year ended 31 March 2025.

Responsibilities and basis of report

As the charity's trustees of the Company (and also its directors for the purposes of company law) you are responsible for the preparation of the accounts in accordance with the requirements of the Companies Act 2006 ('the 2006 Act').

Having satisfied myself that the accounts of the Company are not required to be audited under Part 16 of the 2006 Act and are eligible for independent examination, I report in respect of my examination of your charity's accounts as carried out under Section 145 of the Charities Act 2011 ('the 2011 Act'). In carrying out my examination I have followed the Directions given by the Charity Commission under Section 145(5) (b) of the 2011 Act.

Independent examiner's statement

Since your charity's gross income exceeded £250,000 your examiner must be a member of a listed body. I can confirm that I am qualified to undertake the examination because I am a member of the Institute of Chartered Accountants in England and Wales, which is one of the listed bodies.

I have completed my examination. I confirm that no matters have come to my attention in connection with the examination giving me cause to believe:

1. accounting records were not kept in respect of the Company as required by Section 386 of the 2006 Act; or
2. the accounts do not accord with those records; or
3. the accounts do not comply with the accounting requirements of Section 396 of the 2006 Act other than any requirement that the accounts give a true and fair view which is not a matter considered as part of an independent examination; or
4. the accounts have not been prepared in accordance with the methods and principles of the Statement of Recommended Practice for accounting and reporting by charities (applicable to charities preparing their accounts in accordance with the Financial Reporting Standard applicable in the UK and Republic of Ireland (FRS 102)).

I have no concerns and have come across no other matters in connection with the examination to which attention should be drawn in this report in order to enable a proper understanding of the accounts to be reached.



J Dennis ACA

TC Group
31 High View Close
Hamilton Office Park
Leicester
Leicestershire
LE4 9LJ

Date: 10/12/2025

FOCUS CHARITY

STATEMENT OF FINANCIAL ACTIVITIES
FOR THE YEAR ENDED 31 MARCH 2025

	Notes	Unrestricted funds £	Restricted funds £	2025 Total funds £	2024 Total funds £
INCOME AND ENDOWMENTS FROM					
Donations and legacies		30,315	-	30,315	38,983
Charitable activities					
Charitable activities		-	246,758	246,758	223,361
Investment income	2	<u>958</u>	<u>-</u>	<u>958</u>	<u>613</u>
Total		<u>31,273</u>	<u>246,758</u>	<u>278,031</u>	<u>262,957</u>
EXPENDITURE ON					
Raising funds		404	(1)	403	1,143
Charitable activities					
Charitable activities		<u>4,857</u>	<u>255,259</u>	<u>260,116</u>	<u>236,129</u>
Total		<u>5,261</u>	<u>255,258</u>	<u>260,519</u>	<u>237,272</u>
NET INCOME/(EXPENDITURE)		26,012	(8,500)	17,512	25,685
Transfers between funds	11	<u>60</u>	<u>(60)</u>	<u>-</u>	<u>-</u>
Net movement in funds		26,072	(8,560)	17,512	25,685
RECONCILIATION OF FUNDS					
Total funds brought forward		<u>13,328</u>	<u>45,420</u>	<u>58,748</u>	<u>33,063</u>
TOTAL FUNDS CARRIED FORWARD		<u>39,400</u>	<u>36,860</u>	<u>76,260</u>	<u>58,748</u>

The notes form part of these financial statements

FOCUS CHARITY

BALANCE SHEET
31 MARCH 2025

	Notes	2025 £	2024 £
FIXED ASSETS			
Tangible assets	7	-	62
CURRENT ASSETS			
Debtors	8	23,601	40,130
Cash at bank and in hand		<u>57,581</u>	<u>23,073</u>
		81,182	63,203
CREDITORS			
Amounts falling due within one year	9	(4,922)	(4,517)
NET CURRENT ASSETS		<u>76,260</u>	<u>58,686</u>
TOTAL ASSETS LESS CURRENT LIABILITIES		76,260	58,748
NET ASSETS		<u>76,260</u>	<u>58,748</u>
FUNDS	11		
Unrestricted funds		39,400	13,328
Restricted funds		<u>36,860</u>	<u>45,420</u>
TOTAL FUNDS		<u>76,260</u>	<u>58,748</u>

The charitable company is entitled to exemption from audit under Section 477 of the Companies Act 2006 for the year ended 31 March 2025.

The members have not required the company to obtain an audit of its financial statements for the year ended 31 March 2025 in accordance with Section 476 of the Companies Act 2006.

The trustees acknowledge their responsibilities for

- (a) ensuring that the charitable company keeps accounting records that comply with Sections 386 and 387 of the Companies Act 2006 and
- (b) preparing financial statements which give a true and fair view of the state of affairs of the charitable company as at the end of each financial year and of its surplus or deficit for each financial year in accordance with the requirements of Sections 394 and 395 and which otherwise comply with the requirements of the Companies Act 2006 relating to financial statements, so far as applicable to the charitable company.

These financial statements have been prepared in accordance with the provisions applicable to charitable companies subject to the small companies regime.

The financial statements were approved by the Board of Trustees and authorised for issue on 30th October 2025 and were signed on its behalf by:

P.P. Shah
P P Shah - Trustee

The notes form part of these financial statements

FOCUS CHARITY
NOTES TO THE FINANCIAL STATEMENTS
FOR THE YEAR ENDED 31 MARCH 2025

1. ACCOUNTING POLICIES

Summary of significant accounting policies and key accounting estimates

The principal accounting policies applied in the preparation of these financial statements are set out below. These policies have been consistently applied to all the years presented, unless otherwise stated.

Statement of compliance

The financial statements have been prepared in accordance with Accounting and Reporting by Charities: Statement of Recommended Practice applicable to charities preparing their accounts in accordance with the Financial Reporting Standard applicable in the UK and Republic of Ireland (FRS 102) (effective 1 January 2019) - (Charities SORP (FRS 102)), the Financial Reporting Standard applicable in the UK and Republic of Ireland (FRS 102). They also comply with the Companies Act 2006 and Charities Act 2011.

Basis of preparation

Focus Charity meets the definition of a public benefit entity under FRS 102. Assets and liabilities are initially recognised at historical cost or transaction value unless otherwise stated in the relevant accounting policy notes.

Going concern

The trustees consider that there are no material uncertainties about the charity's ability to continue as a going concern nor any significant areas of uncertainty that affect the carrying value of assets held by the charity.

Income and endowments

All income is recognised once the charity has entitlement to the income, it is probable that the income will be received and the amount of income receivable can be measured reliably.

Income on funds held on deposit is included when receivable and the amount can be measured reliably by the charity; this is normally upon notification of the interest paid or payable by the Bank.

Grants are recognised when the charity has been notified in writing of both the amount and settlement date. In the event that a grant is subject to conditions that require a level of performance before the charity is entitled to the funds, the income is deferred and not recognised until either those conditions are fully met, or the fulfilment of those conditions is wholly within the control of the charity and it is probable that those conditions will be fulfilled in the reporting period.

Donations and legacies

Donations are recognised when the charity has been notified in writing of both the amount and settlement date. In the event that a donation is subject to conditions that require a level of performance by the charity before the charity is entitled to the funds, the income is deferred and not recognised until either those conditions are fully met, or the fulfilment of those conditions is wholly within the control of the charity and it is probable that these conditions will be fulfilled in the reporting period.

Expenditure

All expenditure is recognised once there is a legal or constructive obligation to that expenditure, it is probable settlement is required and the amount can be measured reliably. All costs are allocated to the applicable expenditure heading that aggregate similar costs to that category. Where costs cannot be directly attributed to particular headings they have been allocated on a basis consistent with the use of resources, with central staff costs allocated on the basis of time spent, and depreciation charges allocated on the portion of the asset's use. Other support costs are allocated based on the spread of staff costs.

Raising funds

These are costs incurred in attracting voluntary income, the management of investments and those incurred in trading activities that raise funds.

Charitable activities

FOCUS CHARITY

NOTES TO THE FINANCIAL STATEMENTS - continued FOR THE YEAR ENDED 31 MARCH 2025

1. ACCOUNTING POLICIES - continued

Expenditure

Charitable expenditure comprises those costs incurred by the charity in the delivery of its activities and services for its beneficiaries. It includes both costs that can be allocated directly to such activities and those costs of an indirect nature necessary to support them.

Tangible fixed assets

Depreciation is provided at the following annual rates in order to write off each asset over its estimated useful life.

Computer equipment - 33% on cost

Taxation

The charity is exempt from corporation tax on its charitable activities.

Cash and cash equivalents

Cash and cash equivalents comprise cash on hand and call deposits, and other short-term highly liquid investments that are readily convertible to a known amount of cash and are subject to an insignificant risk of change in value.

FUND STRUCTURE

Unrestricted income funds are general funds that are available for use at the trustee's discretion in furtherance of the objectives of the charity.

Restricted income funds are those donated for use in a particular area or for specific purposes, the use of which is restricted to that area or purpose.

2. INVESTMENT INCOME

	2025	2024
	£	£
Bank interest	<u>958</u>	<u>613</u>

3. NET INCOME/(EXPENDITURE)

Net income/(expenditure) is stated after charging/(crediting):

	2025	2024
	£	£
Depreciation - owned assets	62	683
Other operating leases	<u>11,148</u>	<u>9,788</u>

4. TRUSTEES' REMUNERATION AND BENEFITS

No trustees, nor any persons connected with them, have received any remuneration from the charity during the years ended 31 March 2025 and 31 March 2024.

No trustees have received any other benefits from the charity during the year or the preceding year.

Trustees' expenses

There were no trustees' expenses paid for the year ended 31 March 2025 nor for the year ended 31 March 2024.

FOCUS CHARITY

NOTES TO THE FINANCIAL STATEMENTS - continued
FOR THE YEAR ENDED 31 MARCH 2025

5. STAFF COSTS

	2025 £	2024 £
Wages and salaries	172,200	164,950
Social security costs	8,721	7,732
Other pension costs	8,064	7,740
	<u>188,985</u>	<u>180,422</u>

The average monthly number of employees during the year was as follows:

	2025 <u>8</u>	2024 <u>8</u>
Staff		

No employees received emoluments in excess of £60,000.

6. COMPARATIVES FOR THE STATEMENT OF FINANCIAL ACTIVITIES

	Unrestricted funds £	Restricted funds £	Total funds £
INCOME AND ENDOWMENTS FROM			
Donations and legacies	38,983	-	38,983
Charitable activities			
Charitable activities	-	223,361	223,361
Investment income	<u>613</u>	<u>-</u>	<u>613</u>
Total	<u>39,596</u>	<u>223,361</u>	<u>262,957</u>
EXPENDITURE ON			
Raising funds	1,143	-	1,143
Charitable activities			
Charitable activities	<u>42,400</u>	<u>193,729</u>	<u>236,129</u>
Total	<u>43,543</u>	<u>193,729</u>	<u>237,272</u>
NET INCOME/(EXPENDITURE)	(3,947)	29,632	25,685
Transfers between funds	<u>(122)</u>	<u>122</u>	<u>-</u>
Net movement in funds	(4,069)	29,754	25,685
RECONCILIATION OF FUNDS			
Total funds brought forward	17,397	15,666	33,063
TOTAL FUNDS CARRIED FORWARD	<u>13,328</u>	<u>45,420</u>	<u>58,748</u>

FOCUS CHARITY

NOTES TO THE FINANCIAL STATEMENTS - continued
FOR THE YEAR ENDED 31 MARCH 2025

7. TANGIBLE FIXED ASSETS

	Computer equipment £
COST	
At 1 April 2024 and 31 March 2025	<u>28,173</u>
DEPRECIATION	
At 1 April 2024	28,111
Charge for year	<u>62</u>
At 31 March 2025	<u>28,173</u>
NET BOOK VALUE	
At 31 March 2025	<u>-</u>
At 31 March 2024	<u>62</u>

8. DEBTORS: AMOUNTS FALLING DUE WITHIN ONE YEAR

	2025	2024
	£	£
Prepayments and accrued income	<u>23,601</u>	<u>40,130</u>

9. CREDITORS: AMOUNTS FALLING DUE WITHIN ONE YEAR

	2025	2024
	£	£
Pension creditor	1,232	1,184
Accrued expenses	<u>3,690</u>	<u>3,333</u>
	<u>4,922</u>	<u>4,517</u>

10. ANALYSIS OF NET ASSETS BETWEEN FUNDS

	Unrestricted funds £	Restricted funds £	2025 Total funds £	2024 Total funds £
Fixed assets	-	-	-	62
Current assets	81,182	-	81,182	63,203
Current liabilities	<u>(41,782)</u>	<u>36,860</u>	<u>(4,922)</u>	<u>(4,517)</u>
	<u>39,400</u>	<u>36,860</u>	<u>76,260</u>	<u>58,748</u>

FOCUS CHARITY

NOTES TO THE FINANCIAL STATEMENTS - continued
FOR THE YEAR ENDED 31 MARCH 2025

11. MOVEMENT IN FUNDS

	At 1.4.24 £	Net movement in funds £	Transfers between funds £	At 31.3.25 £
Unrestricted funds				
General fund	13,328	26,012	60	39,400
Restricted funds				
Big Lottery Grant - Reaching Communities	26,677	(9,664)	-	17,013
De Montfort University	1,800	(1,800)	-	-
BBC Children In Need	13,715	(13,715)	-	-
Million Dollar Round Table	3,168	(3,168)	-	-
Henry Smith Charity	60	-	(60)	-
National Lottery Awards for All	-	19,847	-	19,847
	<u>45,420</u>	<u>(8,500)</u>	<u>(60)</u>	<u>36,860</u>
TOTAL FUNDS	<u>58,748</u>	<u>17,512</u>	<u>-</u>	<u>76,260</u>

Net movement in funds, included in the above are as follows:

	Incoming resources £	Resources expended £	Movement in funds £
Unrestricted funds			
General fund	31,273	(5,261)	26,012
Restricted funds			
Big Lottery Grant - Reaching Communities	127,576	(137,240)	(9,664)
Herritage Lottery Fund	89,533	(89,533)	-
De Montfort University	-	(1,800)	(1,800)
BBC Children In Need	-	(13,715)	(13,715)
Million Dollar Round Table	-	(3,168)	(3,168)
LLR Community Fund (MLLB grant)	3,000	(3,000)	-
Leicester City Council (Community Engagement Fund)	1,802	(1,802)	-
Pixel Fund	5,000	(5,000)	-
National Lottery Awards for All	19,847	-	19,847
	<u>246,758</u>	<u>(255,258)</u>	<u>(8,500)</u>
TOTAL FUNDS	<u>278,031</u>	<u>(260,519)</u>	<u>17,512</u>

FOCUS CHARITY

NOTES TO THE FINANCIAL STATEMENTS - continued
FOR THE YEAR ENDED 31 MARCH 2025

11. MOVEMENT IN FUNDS - continued

Comparatives for movement in funds

	At 1.4.23 £	Net movement in funds £	Transfers between funds £	At 31.3.24 £
Unrestricted funds				
General fund	17,397	(3,947)	(122)	13,328
Restricted funds				
Big Lottery Grant - Reaching Communities	15,666	11,011	-	26,677
Herritage Lottery Fund	-	(122)	122	-
De Montfort University	-	1,800	-	1,800
BBC Children In Need	-	13,715	-	13,715
Million Dollar Round Table	-	3,168	-	3,168
Henry Smith Charity	-	60	-	60
	<u>15,666</u>	<u>29,632</u>	<u>122</u>	<u>45,420</u>
TOTAL FUNDS	<u>33,063</u>	<u>25,685</u>	<u>-</u>	<u>58,748</u>

Comparative net movement in funds, included in the above are as follows:

	Incoming resources £	Resources expended £	Movement in funds £
Unrestricted funds			
General fund	39,596	(43,543)	(3,947)
Restricted funds			
Big Lottery Grant - Reaching Communities	100,177	(89,166)	11,011
Herritage Lottery Fund	84,620	(84,742)	(122)
De Montfort University	2,000	(200)	1,800
BBC Children In Need	14,962	(1,247)	13,715
Million Dollar Round Table	3,802	(634)	3,168
Leicester City Council (HAZ)	300	(300)	-
Openworks	7,500	(7,500)	-
Henry Smith Charity	10,000	(9,940)	60
	<u>223,361</u>	<u>(193,729)</u>	<u>29,632</u>
TOTAL FUNDS	<u>262,957</u>	<u>(237,272)</u>	<u>25,685</u>

FOCUS CHARITY

NOTES TO THE FINANCIAL STATEMENTS - continued
FOR THE YEAR ENDED 31 MARCH 2025

11. MOVEMENT IN FUNDS - continued

A current year 12 months and prior year 12 months combined position is as follows:

	At 1.4.23 £	Net movement in funds £	Transfers between funds £	At 31.3.25 £
Unrestricted funds				
General fund	17,397	22,065	(62)	39,400
Restricted funds				
Big Lottery Grant - Reaching Communities	15,666	1,347	-	17,013
Herritage Lottery Fund	-	(122)	122	-
Henry Smith Charity	-	60	(60)	-
National Lottery Awards for All	-	19,847	-	19,847
	<u>15,666</u>	<u>21,132</u>	<u>62</u>	<u>36,860</u>
TOTAL FUNDS	<u>33,063</u>	<u>43,197</u>	<u>-</u>	<u>76,260</u>

A current year 12 months and prior year 12 months combined net movement in funds, included in the above are as follows:

	Incoming resources £	Resources expended £	Movement in funds £
Unrestricted funds			
General fund	70,869	(48,804)	22,065
Restricted funds			
Big Lottery Grant - Reaching Communities	227,753	(226,406)	1,347
Herritage Lottery Fund	174,153	(174,275)	(122)
De Montfort University	2,000	(2,000)	-
BBC Children In Need	14,962	(14,962)	-
Million Dollar Round Table	3,802	(3,802)	-
Leicester City Council (HAZ)	300	(300)	-
Openworks	7,500	(7,500)	-
Henry Smith Charity	10,000	(9,940)	60
LLR Community Fund (MLLB grant)	3,000	(3,000)	-
Leicester City Council (Community Engagement Fund)	1,802	(1,802)	-
Pixel Fund	5,000	(5,000)	-
National Lottery Awards for All	<u>19,847</u>	<u>-</u>	<u>19,847</u>
	<u>470,119</u>	<u>(448,987)</u>	<u>21,132</u>
TOTAL FUNDS	<u>540,988</u>	<u>(497,791)</u>	<u>43,197</u>

FOCUS CHARITY

NOTES TO THE FINANCIAL STATEMENTS - continued
FOR THE YEAR ENDED 31 MARCH 2025

12. RELATED PARTY DISCLOSURES

There were no related party transactions for the year ended 31 March 2025 or the year ended 31 March 2024.

FOCUS CHARITY
DETAILED STATEMENT OF FINANCIAL ACTIVITIES
FOR THE YEAR ENDED 31 MARCH 2025

	2025 £	2024 £
INCOME AND ENDOWMENTS		
Donations and legacies		
Donations	30,315	38,983
Investment income		
Bank interest	958	613
Charitable activities		
Grants	<u>246,758</u>	<u>223,361</u>
Total incoming resources	278,031	262,957
EXPENDITURE		
Raising donations and legacies		
Raising funds	403	1,143
Charitable activities		
Wages	172,200	164,950
Social security	8,721	7,732
Pensions	8,064	7,740
Rent	11,148	9,788
Insurance	2,513	2,633
Utilities	6,920	5,748
IT Costs	6,066	5,947
Postage and stationery	1,017	1,254
Sundries	522	13
Project delivery costs	34,602	23,586
Volunteer expenses	2,143	1,411
Training costs	986	826
Travel costs	933	512
Bank charges	61	66
Office equipment & furniture	534	-
Depreciation of computer equipment	<u>62</u>	<u>683</u>
	256,492	232,889
Support costs		
Governance costs		
Accountancy and legal fees	<u>3,624</u>	<u>3,240</u>
Total resources expended	<u>260,519</u>	<u>237,272</u>
Net income	<u><u>17,512</u></u>	<u><u>25,685</u></u>

This page does not form part of the statutory financial statements