



The Mid Yorkshire Hospitals  
NHS Trust

# ANNUAL REPORT

And Unaudited Accounts  
2022 - 2023

Helping Our Hospitals Do  
More





The Mid Yorkshire Hospitals  
NHS Trust



## The Mid Yorkshire Hospitals NHS Trust Charitable Fund

### Registered office:

MY Hospitals Charity  
Trust HQ & Education Centre  
Pinderfields Hospital  
Aberford Road  
Wakefield WF1 4DG

**Registered Charity No.** 1067163

### Contact the Charity:

- ♥ By email – [midyorks.myhospitalscharity@nhs.net](mailto:midyorks.myhospitalscharity@nhs.net)
- ♥ By telephone – 01924 546017 or team mobile - 07926 068690
- ♥ By post – to the registered address above



# Contents

- 1.0 Executive Summary..... Page 4
- 2.0 Overview of Fundraising Activity.....Page 5
  - 2.1 MRI Appeal .....Page 6
- 3.0 A word from the Fundraising Team.....Page 7
- 4.0 Fundraising Strategic Objectives.....Page 9
  - 4.1 Strategic Aim.....Page 10
  - 4.2 Fundraising Strategic Objectives.....Page 10
    - 4.2.1 Increase Charity Visibility.....Page 11
    - 4.2.2 Enhance Brand Quality.....Page 12
    - 4.2.3 Develop further sources of Fundraising Income.....Page 13
    - 4.2.4 Develop and Strengthen Relationships.....Page 14
- 5.0 Fundraising Timeline.....Page 16
- 6.0 Fundraising Statement.....Page 21
  - 6.1 Statement of Fundraising Activity.....Page 22
  - 6.2 Charitable Expenditure.....Page 24
    - 6.2.1 Expenditure on Buildings and Refurbishment.....Page 25
    - 6.2.2 Expenditure on Staff Education and Resources.....Page 25
    - 6.2.3 Expenditure on Staff Wellbeing.....Page 26
    - 6.3.4 Expenditure on Patient Welfare and Amenities.....Page 27
- 7.0 MARKETING STRATEGY SUMMARY.....Page 28
  - 7.1 Marketing Review..... Page 29
- 9.0 Looking to the future.....Page 30
  - 9.1 Strategic Objectives of 2023/2024.....Page 31



# EXECUTIVE SUMMARY

Through grants supported by charitable donations, the Mid Yorkshire Hospitals NHS Trust Charitable Fund and Associated Charities (MY Hospitals Charity) aims to improve patient and staff care and experience throughout Mid Yorkshire (jurisdiction covering Dewsbury, Pontefract, Wakefield, and surrounding Communities) above and beyond government-funded services and facilities.

The amount of money raised in 2022 has been nothing short of amazing. The overwhelming assistance given to MY Hospitals Charity has greatly helped the organisation achieve its altruistic goal of improving patient care in our hospitals. As a result, we anticipate that the charity's effect will continue to grow as more staff members and members of the general public become aware of these initiatives and the charity's existence. The report that follows, which was originally presented to the Committee, gives a summary of some of the major actions and events, along with in-depth marketing data.



**HELPING  
OUR  
HOSPITALS  
DO MORE**

# MY MRI Appeal

Dewsbury★Pontefract★Wakefield



Raising  
**£1.25million**  
for a new  
diagnostic  
suite

Fundraising target: £1,250,000

Amount raised: £373,235

Amount remaining: £876,765

Since 2008, the Mid Yorkshire Hospitals Charity (MYHC) has existed to support the work of the Mid Yorkshire Hospitals NHS Trust which operates from sites in Wakefield, Pontefract, and Dewsbury. As a charity, we raise and allocate funds to projects that significantly elevate the physical and emotional well-being of patients and staff, making a visit to one of our hospitals or community centres the very best it can be.

Our next key priority is to improve access to world-class Radiology at Pinderfields Hospital. Located in Wakefield, this is the largest of the Trust's three hospitals and a designated 'hot site' for acute and urgent care. Home to a Major Trauma Unit, Spinal Injuries Unit and the regional Adults and Children's Burns Centre, its clinicians and staff team primarily serve around 500,000 people, with approximately 3.5 million residents from West, North and East Yorkshire, as well as people in North Lincolnshire, in occasional specialist services.

Pinderfields is also the busiest of the Trust's hospitals providing an exceptional level of care to more than 127,000 patients a year. Over 58,000 of these are A&E admissions and at least 35% will require some form of medical imaging. Others may be attending as outpatients and seeking diagnosis or treatment for serious illnesses such as cancer. Whatever their reasons for admission, patients are usually in the grip of a potentially life-changing situation; one that demands a highly effective response where speed is of the essence. In this extremely pressured context, time spent with the radiology team is often critical to achieving the best outcome for both patients and their families.

# A WORD FROM THE FUNDRAISING TEAM



The years 2022–2023 have been remarkable for MY Hospitals Charity. The Covid-19 pandemic is still having an impact on our scheduled fundraising activities, but we continue to receive incredible assistance from members of the public, patients, and Trust staff all year round.

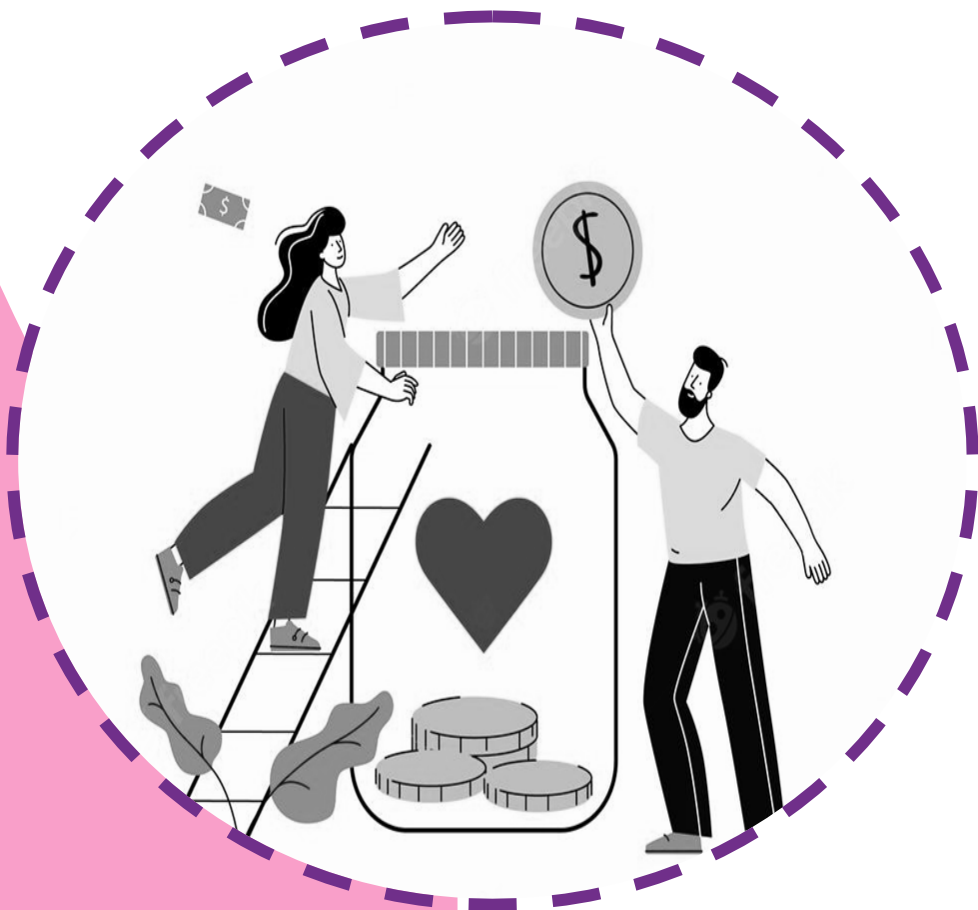
The incredible dedication of the fundraisers and the generosity of the donors allowed MY Hospitals Charity to receive nearly £118,998. With the help of these donations, the charity can purchase equipment and help our patients and employees during these trying times.

The Fundraising Team has worked incredibly hard through the year; generating donations, supporting fundraising and working with Trust departments to turn funding into benefits for patients and staff.

Our communities are still filled with selfless gestures of generosity, and it is incredibly heartening to see how much support there is for the NHS. We are committed to working through these difficult times even though we are unsure of what the future will bring. While some of our "normal" activities may need to be modified, we are constantly thinking of innovative and different methods to operate that will benefit our staff, patients, and families. We understand and value the idea of "stronger together" more than ever since teamwork allows us to do amazing things. We are proud of our team for keeping up their good attitude and mutual support even throughout these unexpected circumstances.

*MY Hospitals Charity*

# FUNDRAISING STRATEGIC OBJECTIVES





## 4.1 Strategic Aim

The strategic aim of MY Hospitals Charity and the Fundraising Team is:

**“To support the Trust charity to enhance patient care through raising awareness, proactively**

**generating funds and supporting others to donate and fundraise”**

The Charity's mission is to raise income and manage funds towards, generally, one of the following three areas: 'improvement of patient care,' 'improvement of patient experience' or 'training of staff towards the improvement of patient care'.

## 4.2 Fundraising Objectives

### Increase Charity Visibility

Further increase the visibility of The Mid Yorkshire Hospitals Charity both online and within the community

### Enhance Brand Value

Improve and maintain a high-quality version of, and professionalise, the current brand, to inspire trust and support fundraising activities

### Develop further sources of Fundraising Income

Widen the range of and diversify sources of fundraising income available to the Charity both online and offline

### Develop and strengthen relationships

Build upon current, and develop new, relationships, both corporate and within the Trust to support the Charity's fundraising aim of enhancing patient care and experience

## 4.2.1 Increase Charity Visibility

*Further increase the visibility of The Mid Yorkshire Hospitals Charity both online and within the community*

### Aim of this objective

To increase awareness of the Charity's existence - maximising online and local reach - to increase likelihood of receiving donations, fundraising support and legacy giving.

### What we did to achieve this

- ♥ Continued merchandise sales – lanyards, branded T-Shirts, Charity running vests etc.
- ♥ Increased our social media audience across all platforms
- ♥ Introduced a Charity Fundraising Hub at Dewsbury and District Hospital, effective in enhancing trust and transparency with our supporters
- ♥ Expanded the Charity's mailing list for email marketing purposes; sign up form presented within our fundraising hub and embedded form within our microsite.
- ♥ Invested in branded GDPR Compliant Donation Envelopes used by Departments across all three Hospital sites.
- ♥ Charity Newsletter distributed to increase our credibility and authority while boosting our content marketing strategy.

### Outcome and Impact

Total cross-platform online audience increase by 26%, from 2,823 to 3,977.

Total online reach for LinkedIn has increased the most this year by 96%, from 4,768 to 9351 in 2023.



## 4.2.2 Enhance Brand Value

*Enhance and maintain a professional brand*

### Aim of this objective

- ♥ To inspire trust and transparency within our audience and support fundraising activities
- ♥ Establish a professional image to increase engagement from corporate & large-scale supporters

### What we did to achieve this

- ♥ Continue to invest in a full-time marketing student with expertise to breathe new life into marketing content, social media, and other online platforms.
- ♥ Modernised marketing material with new designs and layouts and used these consistently
- ♥ Development of the of a new Charity Microsite
- ♥ Continue to review and update brand guidelines document (established in 2020) to add credibility and ensure consistency of branding.

### Outcome and Impact

- ♥ Quality of marketing content (posters, banners & online posts) improved with use of a consistent branding theme, making the content more recognisable and professional looking
- ♥ Now have an engaging website which is user friendly and features a modern design with updated content





## 4.2.3 Develop further sources of fundraising income

*Widen and diversify sources of fundraising income available to the Charity both online and offline*

### Aim of this objective

- ♥ To demonstrate that the Charity recognises and responds to changes in the way people give
- ♥ To expand the potential reach of charitable fundraising
- ♥ To increase and diversify fundraising income

### What we did to achieve this

- ♥ Adopt new and innovative means of raising funds, especially online. As the current climate is ever-changing, MYHC are still working with the innovated fundraising strategy for generating income, in line with health and safety guidelines
- ♥ Diversify income generation by offering various means of donating to avoid missed opportunities and maximise income, for example signing up to Give as you live, Savoo Giving and Tiltify platforms.
- ♥ Grow the Charity within the community to gain a greater amount of fundraising income from the community

### Outcome and Impact

- ♥ Merchandise sales contributed to charitable income this year
- ♥ MY Hospitals Charity has received 109 non-Monetary donations totalling £153,854.



## 4.2.4 Develop and strengthen relationships

*Build upon current, and develop new, relationships, both corporate and within the Trust*

### Aim of this objective

- ♥ To develop new opportunities and avenues for fundraising events
- ♥ To expand support and awareness of the Charity in the Community
- ♥ To support the Charity's fundraising aim of enhancing patient care and experience

### What we did to achieve this

- ♥ Continued to maintain effective partnerships with agencies on-site, and local businesses.
- ♥ Coordinated with the Communications Team to drive Charity messages on new platforms, e.g. computer screensavers, and updating slides on patient facing digital screens across site
- ♥ Developed new and effective relationships with departments within the Trust
- ♥ A section added to our microsite tailored for corporate fundraising / partner organisations and school relationships

### Outcome and Impact

- ♥ MY Hospitals Charity has received £89,600 from donations from corporates.
- ♥ MY Hospitals Charity has received 109 non-Monetary donations totalling £153,854.
- ♥ MY Hospitals Charity have developed and created new relationships with businesses and community groups.







# MAKING A DIFFERENCE



## FUNDRAISING TIMELINE 2023

### JAN

In January, we gratefully received a handmade Diamond Painting from Jan and Phil Russell, donated in respect of appreciation for all the hard work of the Trust staff and their care towards Phil's Mother, Mrs Shirley Anne Gorman who sadly passed away from Covid in 2020.

The painting, which took Jan over 90 hours to complete, depicts Superheroes bending before NHS staff, a fitting tribute to the tireless efforts of all throughout the pandemic



### FEB

In February we said a huge thank you to NE/209/1 Branch Unite the Nation for their incredibly kind donation to our Children's Burns Unit at The Mid Yorkshire Hospitals NHS Trust.



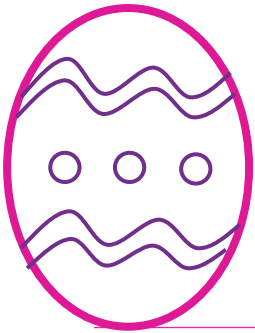
### MAR

In March, two of our Elderly Care Wards, Gate 41 and 42 at Pinderfields Hospital, gratefully received a kind donation of toiletries from Dewsbury Boothroyd Primary Academy

Mandi Reeve, the school's community champion, and Pam Goddard, the Pastoral Mentor, generously handed over the gifts together with the community champion children.







## APR

In April, we saw incredible amounts of generosity from local businesses, community groups, schools, patients, and staff who donated easter eggs and treats to The Mid Yorkshire Hospitals NHS Trust.

## MAY

In May, we expressed our heartfelt gratitude to Yorkshire Children's Trust for their kind donation of £1000 to The Mid Yorkshire Hospitals NHS Trust Children's Department.

This donation helped us to fund arts and crafts to entertain our younger patients while they're in our care



## JUN

In June, we shared the kind donation from East Ardsley Primary School, who chose to support their local NHS charity through 'Make a Nurse Smile a Day'.

The School Council planned a thoughtful way for students to donate a gift that will brighten a Nurse's Day, collectively from 12 classes they donated over 300 gifts to our wonderful staff.

These gifts supported Nurses across The Mid Yorkshire Hospitals NHS Trust, as well as our Community Nurses who provide care to our patients within our community



## JUL

In July, our MY Hospitals Charity Team attended the Matty Nutter Memorial Football Tournament today, where 16 teams competed for the Matty Nutter Memorial Trophy raising £4,415

A huge thank you to Matty's family, all who took part, the organisers, and volunteers for helping make this happen; your efforts will make a positive difference to those within our care.



## AUG

In August we gave a special thank you to sisters, Emily and Mary who raised £2148.47 by running the Leeds Half Marathon, in memory of their sister Rachel.

Rachel sadly passed away in December last year, where teams on Gate 33 and 34 showed her exceptional care as a patient, making her feel at home

The family wished to give back, with the monies going towards improving patient care and experience at the Trust



## SEP

Huge congratulations to all our runners who completed 2022

The dedication all the runners shown was admirable to run to raise money for MY Hospitals Charity

Our team Radiology runners smashed their fundraising target surpassing their £20,000 goal with the help of an extremely generous from Jane McDonald



## OCT



October, we thanked Steve Calline, a grateful patient.

Steve wrote a book called 'Parkside – A History of The Hunslet RLFC 1895-1973' which he sold and raised £1,000 profit

He has donated £500 to Hunslet RLFC and £500 to The Cavell Unit (Chemotherapy Day Unit), here at The Mid Yorkshire Hospitals NHS Trust

## NOV

In November, we welcomed and thanked Thornton Jones Solicitors who donated £2,136 to our Children's Department.

The team hiked from their Ossett office to their Sherburn in Elmet office (via our Wakefield and Garforth) - a total of 24 miles



## DEC



The fundraising team worked on numerous fundraising events for Christmas 2022. The Fundraising team organised and facilitated 7 choir visits at Pinderfields atrium raising a total of £631.31. Furthermore, the charity held a Christmas Jumper Day held internally within The Mid Yorkshire Hospitals NHS Trust and at local schools raising a total of over £270. The MY Hospitals Charity facilitated over 37 Christmas non-monetary donations at an approximate value of £10,925 to areas across The Mid Yorkshire Hospitals NHS Trust.

# FUNDRAISING STATEMENT





## 6.0 Fundraising Statement

### 6.1 Fundraising Report

The following is a fundraising report for financial years 22/23, 21/22, 20/21, 19/20 & 18/19

#### Fundraising Report as at 31 March 2023

	Total 2022/23 £	Total 2021/22 £	Total 2020/21 £	Total 2019/20 £	Total 2018/19 £
<b>Income from</b>					
Donations from individuals	55,573	61,200	47,285	68,697	95,249
Donations from charities	103,917	850	8,173	62,471	19,870
Corporate donations	89,600	88,167	20,057	27,880	21,601
Legacies	102,194	150,007	91,052	338,963	5,724
<b>Total donations and legacies</b>	<b>351,284</b>	<b>300,224</b>	<b>166,567</b>	<b>498,011</b>	<b>142,444</b>
Fundraising income	65,365	70,687	128,273	54,827	43,154
Investment income	76,604	70,048	68,244	71,992	72,254
NHS Charities Together Grants	0	0	396,000	0	0
<b>Total Income</b>	<b>493,253</b>	<b>440,959</b>	<b>759,084</b>	<b>624,830</b>	<b>257,852</b>
<b>Expenditure on</b>					
Raising funds	(141,408)	(98,955)	(90,324)	(90,596)	(44,463)
Overhead and Support Costs	(101,728)	(90,576)	(95,140)	(94,626)	(86,351)
	(243,136)	(189,531)	(185,464)	(185,222)	(130,814)
Charitable activities					
- Buildings and refurbishment	(72,997)	(115,547)	(244,963)	(239,360)	(1,270)
- Purchase of medical equipment	(72,607)	(19,874)	(79,029)	(58,437)	(178,946)
- Staff education and resources	(127,209)	(91,408)	(211,832)	(13,400)	(50,983)
- Patient welfare and amenities	(75,042)	(166,351)	(87,400)	(28,260)	(178,072)
	(347,855)	(393,180)	(623,224)	(339,457)	(409,271)
<b>Total expenditure</b>	<b>(590,991)</b>	<b>(582,711)</b>	<b>(808,688)</b>	<b>(524,679)</b>	<b>(540,085)</b>
Net gains/(losses) on investments	(149,108)	194,960	295,677	(54,338)	119,178
<b>Net movement in funds</b>	<b>(246,846)</b>	<b>53,208</b>	<b>246,073</b>	<b>45,813</b>	<b>(163,055)</b>
Total funds brought forward	2,414,535	2,361,327	2,115,254	2,069,441	2,232,496
<b>Total funds carried forward</b>	<b>2,167,689</b>	<b>2,414,535</b>	<b>2,361,327</b>	<b>2,115,254</b>	<b>2,069,441</b>

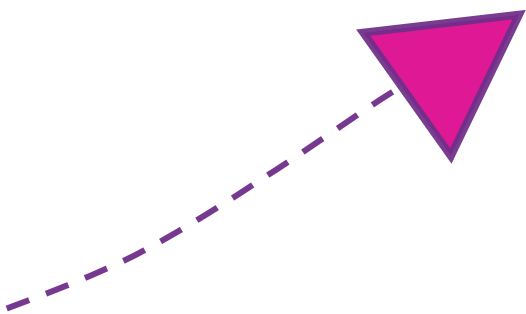
In 22/23, key sources of income include;

- Legacies- £ 102,194
- Donations- £ 249,090
- Fundraising- £ 66,365
- Pledges - £250,000

In addition, the value of non-monetary donations amounted to £153,854



# CHARITABLE EXPENDITURE



## 6.2 Charitable Expenditure

The Charity aim is to improve the quality of care that patients of the Mid Yorkshire Hospitals NHS Trust receive both during their time in our hospitals, covering not only direct enhancements to the equipment and services provided but also the environment in which they are treated, alongside the quality of care able to be given, seen to by enhancing staff training and welfare.

### 6.2.1 Expenditure on Buildings and Refurbishment

To date, the charity has committed to fund £ 72,997 on buildings and refurbishment at The Mid Yorkshire Hospitals NHS Trust.

This includes over £1,802 on enhancing garden areas and staff seating Pinderfields Hospital.



### 6.2.2 Expenditure on Staff Education and Resources

MY Hospitals Charity has committed to fund £ 127,209 towards staff education and resource to enhance abilities and the level of care our staff can provide.

Key items include;

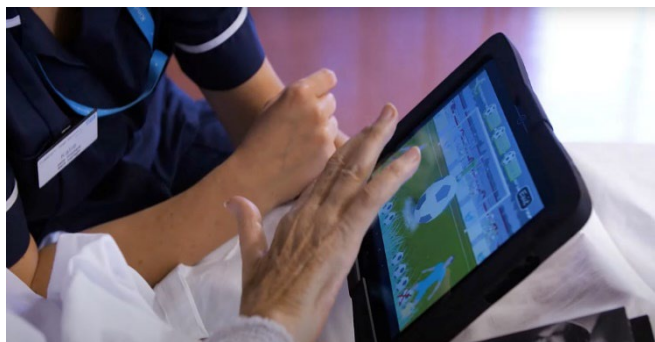
- ♥ BBA Conference 2022
- ♥ ABS Conference 2022
- ♥ Advanced Communication skills course
- ♥ Advanced Pain and Symptom Management Course

## 6.2.3 Expenditure on Medical Equipment

MY Hospitals Charity has committed to fund £72,607 towards purchasing medical equipment to enhance abilities and the level of care our staff can provide.

Key items include;

- ♥ RITA System
- ♥ Laerdal Nursing Anne Simulator
- ♥ SDEC Machine
- ♥ Bronchoscopy aBox 2 Plus
- ♥ Encor Enspire for Lorad Table



SDEC Machine

Encor Enspire for Lorad Table





## 6.2.4 Expenditure on Patient Welfare and Amenities

MY Hospitals Charity has committed to fund £75,042 towards the improvement of patient welfare and amenities, to enhance and improve patient experience.

Key items include;

- ♥ End of Life Comfort Packs
- ♥ Rheumatology Pain Leaflets
- ♥ Pain Toolkit Leaflets
- ♥ Mammo Biopsy Chair
- ♥ SDEC Recliner Chairs
- ♥ TV's and Camp Bed on Gate 44
- ♥ Patient Entertainment Systems



Patient Entertainment  
Systems

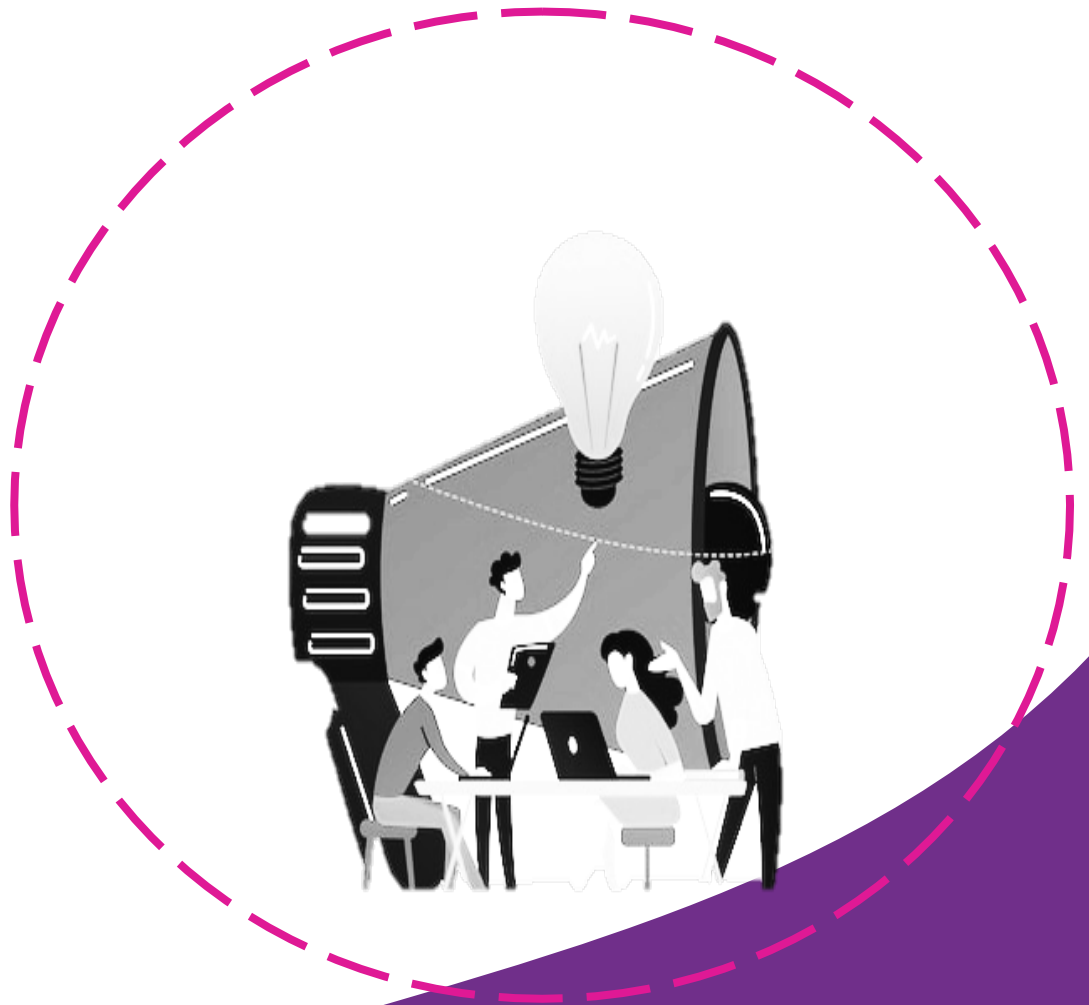


Mammo Biopsy Chair



SDEC Recliner Chairs

# MARKETING STRATEGY SUMMARY



# ANNUAL MARKETING REPORT SUMMARY



## 7.1 Social Media Review

Throughout the year of 2022 – 2023, the Charity's social media platforms increased in overall audience.

Facebook increased its audience by 17%, totalling 1782 followers, Instagram increased by 15%, totalling 522 followers, LinkedIn is closely followed by a 9% increase, with 589 followers and Twitter received a 22% increase in followers, totalling 1084.

There has been a change in the Charity team which may explain some fluctuations in August and September in terms of 'Reach', however it is promising to see this is on this rise again.

The way engagement is recorded has changed on the analytic system, so although figures appear low compared to last year, we can still confidently say that trends towards the end of the year are positive.

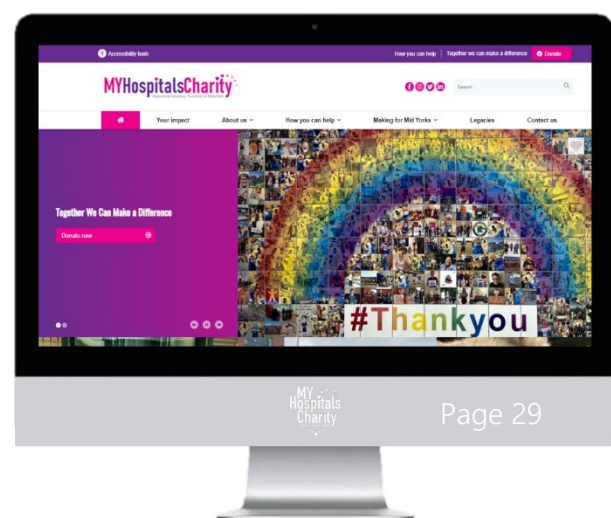
## 7.2 Website report

In terms of website, across all indicators of 'Users', 'New Users', 'Bounce Rate', 'Sessions', 'Page Views', 'Session Duration', 'Pages per Session' and 'Number of Sessions per use' there is a spike in numbers around September time, with the exception of 'Average Bounce Rate'.

This may be best explained by Jane McDonald's commitment to match the Radiology Team's fundraising amount for the Great North Run, taking place in September for the MRI Appeal.

The Charity also notices the small amount of time users spend on our site, however, feel this is because users most likely visit our website for specific information and so demonstrates the usefulness of navigation for our site.

For a full  
breakdown, please  
see our separate  
Annual Marketing  
Report



# LOOKING TO THE FUTURE



“BUILD UPON  
OUR  
ACHIEVEMENTS  
OF THIS YEAR”

## 10.0 Strategic Objectives of 2023/2024

### Strategic objectives of 2023/2024

Looking beyond 2022 we are hopeful that we can build upon our achievements of this year and turn them into even greater achievements for 2023/2024.

As our Charity grows the objectives of 2022 carry into 2023, particularly in relation to the development of fundraising income sources, and the growth of the Charity's presence in the local community and on social media. Bolstered by a newly improved and higher quality format for producing content, and the stronger relationships with businesses, the community, and other departments, it is very much possible to achieve the forecasted goals for social media.

A large pink circle is positioned on the left side of the page, partially overlapping the white background. A dashed purple line curves from the bottom left towards the right side of the page, passing behind the pink circle.

# OUR STRUCTURE, GOVERNANCE, AND MANAGEMENT

## Corporate Trustee

The Mid Yorkshire Hospitals NHS Trust is the Corporate Trustee of the Charity governed by the law applicable to Trusts, principally the Trustee Act 2000 and the Charities Act 2011 (previously Charities Acts 1993 and 2006).

Non-Executive members of the Trust Board were appointed by NHS Improvement and Executive members of the Board are subject to recruitment by the Mid Yorkshire Hospitals NHS Trust Board. Members of the Trust Board and the Charitable Funds Committee are not individual trustees under Charity Law but act as agents on behalf of the Corporate Trustee.

The members of the Mid Yorkshire Hospitals NHS Trust Board who served during the financial year and to the date of this report were as follows:

Mr K Ramsay	-	Chairman
Mrs J Charge	-	Non-Executive Director
Mr S Stone	-	Non-Executive Director (to November 22)
Mr G Ellis	-	Non-Executive Director
D Throssell	-	Non-Executive Director
M Nawaz	-	Non-Executive Director
Mr Len Richards	-	Chief Executive
Mrs J Hazelgrave	-	Director of Finance(to 30 May 22)
Mrs A Whitaker	-	Chief finance officer (From 5 September 22)
Dr K Stone	-	Medical Director(To 27 November 22)
Mr D Melia	-	Director of Nursing and Quality/Deputy Chief Executive(to 17July 22)
Mrs T Davies	-	Chief Operating Officer (To February 23)
Mr P Marshall	-	Director of Workforce and Organisation Development
Mrs Jo Webster	-	Director of Community Services(?)
Mr M Braden	-	Director of Estates, Facilities and IMT

The Mid Yorkshire Hospitals NHS Trust's Board has an established Charitable Funds Committee.

## Charitable Funds Committee

The Charitable Funds Committee has the delegated responsibility for the management and administration of the Charity, acting on behalf of the Corporate Trustee. The Committee's powers are specifically delegated in the Charitable Funds Committee Terms of Reference and Charitable Funds Policy and Procedures. The duties of the Committee are to:

- Establish and maintain an effective system of integrated governance, risk management and internal control across the Charity's activities which supports the achievement of its objects.
- Assure that members are aware of their responsibilities as a Charity Trustee.
- Assure that proper accounting records are maintained and the financial position of the Charity is reviewed.
- Assure that fund accounts are effectively managed.
- Promote the Charity and encourage a culture of fundraising both within the Trust and the local population, and to authorise fundraising activities.
- Authorise the acceptance and application of legacies.
- Authorise requests for expenditure in line with the Scheme of Delegation to ensure funds are appropriately applied, are value for money and in furtherance of the Charity's objects.
- Review and monitor reserves in line with the policy and report to the Corporate Trustee.
- Appoint professional investment advisors, to review the investment risk portfolio and monitor investments.
- Review the financial statements and annual report before submission to the Corporate Trustee.
- Keep the Corporate Trustee fully informed of the activity, performance and risks of the Charity.

Regard has been given to the Public Benefit guidance published by the Charity Commission. Systems and strategies have been reviewed to ensure compliance and shape future plans, and the Terms of Reference have been amended accordingly. Public benefit and independence are two of the criteria that are assessed prior to authorisation of a grant from the Charity.

The Charitable Funds Committee is responsible for ensuring that members of the Trust Board are aware of their responsibilities in acting as a Charity Trustee on behalf of the Corporate Trustee. The Charitable Funds Committee agreed as part of its self-assessment to include the Charity on the induction programme for new Trustees and to brief them on the charity and their responsibilities. A meeting with the charitable funds team is offered to new members to give them the opportunity to raise questions and provide additional background to the operational aspects of the Charity.

The Charitable Funds Committee receives regulatory and reporting updates in respect of Charity Commission guidance. The Charity is continuing to prepare its financial statements under the SORP 2019 and similar to last year, the Charity has not been consolidated in the Trust's accounts on grounds that it is not material to the Trust.



The Charitable Funds Committee considered the Charity Commission's guidance on charity fundraising and receives regular updates from the fundraising team. To embed appropriate governance for ethical fundraising that meets with regulatory requirements, it was agreed to register with the Fundraising Regulator and for a member of the fundraising team to undertake the Institute of Fundraising's certificate in Fundraising course. Additional insurance was taken out to cover fundraising activities organised by the Charity.

All key issues are reported to the full Board and a separate Corporate Trustee meeting is held to review the financial statements and discuss governance issues.

## Principal Charitable Fund Adviser to the Board

The Director of Finance is responsible for the day-to-day management and control of the administration of the Charity and reports to the Charitable Funds Committee. The Director of Finance has delegated powers to authorise expenditure and manage charitable funds activities in accordance with the policies and procedures approved by the Board on behalf of the Corporate Trustee.

## Administration

The accounting records and the day-to-day administration of the funds are undertaken by the Mid Yorkshire Hospitals NHS Trust's finance department located at Pinderfields Hospital, Aberford Road, Wakefield, WF1 4DG.

The Charity has continued to subscribe to the Justgiving website, which has been popular with fundraisers choosing to use this website to raise and collect funds during the Covid-19 pandemic.

The Committee remains open-minded to ways that incoming resources can be generated going forward and during the year has reviewed its communication strategy as a means of raising the Charity's profile. Fund holders are encouraged to effectively and sensibly utilise their funds.

## Grant Making Policy

The Charity has designated funds, spread across wards and departments. These designations are considered appropriate to ensure that the opportunity to benefit is not restricted to particular services and hence all patients, carers and local communities accessing the services of the Trust or local health economy may benefit.

A Fund Holder is appointed for each fund account. The Fund Holder is responsible for the administration of the account and for requesting expenditure from the fund.

The Charitable Funds Team processing the expenditure requests ensure that authorisation is gained from relevant personnel who have delegated authorisation limits within the Charitable Funds Policy. Trustee authorisation is required for any item of expenditure between £5,001 and £10,000, two Trustees between £10,001 and £25,000 and the Charitable Funds Committee over £25,001. The Charitable Funds Committee reports matters to the Corporate Trustee following each meeting. Any significant items of expenditure are reported as a matter of course.

The main areas of charitable activity are grants to equip new premises, purchase medical equipment, refurbishment of ward areas, staff education & resource and patient welfare & amenities. The Charity provides grants to NHS organisations that have well established procurement processes in place so that the safety of individuals is not put at risk. More specific details of grants made are included within the review of our achievements section below.

## Types of Fund Accounts

The Charity's unrestricted fund was established using the model declaration of trust and all funds held on trust as at the date of registration were either part of this unrestricted fund or registered as separate restricted funds under the main charity. Subsequent donations and gifts received by the Charity that are attributable to the original funds are added to those fund balances within the existing Charity.

The Charity has the following types of funds:

- Designated Funds being those available for spending and allocated within the general unrestricted fund, in line with a donor's wishes. Designated funds are established on a basis consistent with the NHS Trust's management arrangements. Requests for expenditure from designated funds are reviewed by senior managers responsible for the service area to which the fund relates.
- Restricted funds being; the Arthur Armitage Fund; Covid-19 (Staff Benefit); Covid-19 (General Purpose); The Pinderfields Burns Research Fund; Pinderfields Chest Unit Services Fund; Coronary Care; Cancer Services; Urology; Colorectal and Cancer Services; ICU and PGI (Restricted); Oncology/Haematology; NRC/Stroke Unit; Neurological Fund and Pinderfields Burns Centre Fund; MRI Appeal fund; Rheumatology & Physio Equipment DDH.

The Corporate Trustee fulfils its legal duty by ensuring that funds are spent in accordance with the objects of each fund and also by designating funds. The Trustee respects the wishes of our generous donors to benefit patients and staff for the improvement of patient care.

## Risk Management

The risk register is a standing item on the Charitable Funds Committee's work plan. The risks are scored and any presenting with a high score is escalated to the Corporate Trustee. No risks of this nature were identified during the year.

The systems, policies and risk register are reviewed by the Charitable Funds Committee on a regular basis. The Committee also receives an internal audit report every two years. The report in 2019/20 gave significant assurance on the Charity's systems and controls.

## Partnership Working and Networks

The Mid Yorkshire Hospitals NHS Trust is the Corporate Trustee of the Charity. NHS patients receiving treatment or accessing services at the Trust are the main beneficiaries of these charitable funds. Close networks are established between the Charity and the Trust to ensure charitable funds are directed to further services in line with the main activities, objectives and strategic plans of the Trust and local health economy. The Trust is a related party by virtue of being Corporate Trustee of the Charity.

Close links have been maintained with other local organisations and charities and in particular The Hydes Hospital Trust and Walk the Walk from which significant contributions are gratefully received. The Charity's fundraising team have made significant improvements with regards to raising the profile of the Charity through social media, making links and building relationships with local businesses, organisations and with the people that use our services.

A number of substantial donations and grants made from these relationships have not only benefited patients but have provided support to families and friends who have been through difficult and challenging times.

## Reference and administrative details

The Mid Yorkshire Hospitals NHS Trust Charitable Fund (the Charity), registered charity number 1067163, was entered on the Central Register of Charities on the 6 January 1998. The Charity's governing document is a Declaration of Trust dated 3 December 1997 as amended by supplemental deeds dated 6 February 2007 and 19 June 2007.

Its mission and aim is to raise income and manage funds for:

"The benefit of patients and to support staff to deliver improved patient care".

The Charity's main fund has NHS wide objectives as follows:

"The Trustee shall hold the trust fund upon trust to apply the income, and at their discretion, so far as may be permissible, for charitable purposes relating to the general or any specific purposes of the Mid Yorkshire Hospitals NHS Trust or to purposes relating to the health service".

The Charity is constituted of 18 restricted (2021/22: 17) and one unrestricted fund. There are 59 (2021/22: 59) designated funds within the unrestricted fund as at 31 March 2023 and the notes to the accounts distinguish the types of funds held and disclose separately all material funds.

Charitable funds received by the Charity are accepted, held and administered as funds and property held on trust for purposes relating to the health service in accordance with the National Health Service Act 1977 and the National Health Service and Community Care Act 1990 and these funds are held on trust by the corporate body.

The names of those people who served as agents for the Corporate Trustee, as permitted under regulation 16 of the NHS Trusts (Membership and Procedures) Regulations 1990 were as follows:

Mr K Ramsay	-	Chairman
Mrs A Whitaker	-	Chief finance officer
Mr G Ellis	-	Non-Executive Director
Mr M Nawaz	-	Non-Executive Director

## Principal Office

The principal office for the Charity is:

Mid Yorkshire Hospitals NHS Trust  
NHS Trust Board (Corporate)  
C/O Trust HQ and Education Centre  
Pinderfields Hospital  
Aberford Road  
Wakefield  
WF1 4DG

## Principal Professional Advisers

### Bankers

Lloyds Bank  
75 Commercial Street  
Batley  
West Yorkshire  
WF17 5EQ

### Independent Examiner

David Hoose, Mazars LLP  
Public Services  
5th Floor, 3 Wellington Place  
Leeds  
LS1 4AP

CCLA Investment Management Ltd  
COIF Charity Funds  
80 Cheapside  
London  
EC2V 6DZ

## Statement of trustee's responsibilities in respect of the trustee's annual report and accounts

The Mid Yorkshire Hospitals NHS Trust Charitable Fund is the sole corporate trustee of the fund. Delegated responsibility of the trustee is applied to executive and non-executive members of Mid Yorkshire Hospitals NHS Trust Board.

The trustee is responsible for preparing the trustees' Annual Report and financial statements in accordance with applicable law and United Kingdom Accounting Standards (United Kingdom Generally Accepted Accounting Practice).

The law applicable to charities in England and Wales/Scotland/Northern Ireland requires the trustee to prepare financial statements for each financial year, which give a true and fair view of the state of affairs of the charity and of the incoming resources and application of resources of the charity for that period.

In preparing these financial statements, the trustee is required to:

- select suitable accounting policies and then apply them consistently;
- observe the methods and principles in the Charities SORP;
- make judgements and estimates that are reasonable and prudent;
- state whether applicable accounting standards have been followed, subject to any material departures disclosed and explained in the financial statements; and
- prepare the financial statements on the going concern basis unless it is inappropriate to presume that the charity will continue in business.

The trustee is responsible for keeping proper accounting records that disclose with reasonable accuracy at any time the financial position of the charity and enable them to ensure that the financial statements comply with the Charities Act 2011, the Charity (Accounts and Reports) Regulations 2008 and the provisions of the trust deed. It is also responsible for safeguarding the assets of the charity and hence for taking reasonable steps for the prevention and detection of fraud and other irregularities.

The trustee is responsible for the maintenance and integrity of the charity and financial information included on the charity's website. Legislation in the United Kingdom governing the preparation and dissemination of financial statements may differ from legislation in other jurisdictions.

The trustee confirms that it has met the responsibilities set out above and complied with the requirements for preparing the accounts. The financial statements set out on pages 28-48 attached have been compiled from and are in accordance with the financial records maintained by the trustee.

By Order of the trustee, and those with delegated responsibility

## Provision of information to the independent examiner

The Trustee at the date of approval of this report confirms that so far as they are aware, there is no relevant information of which the Charity's independent examiner is unaware; and they have taken all the steps that they ought to have taken as a Trustee in order to make themselves aware of any relevant information and to establish that the Charity's independent examiner is aware of that information.

Yours sincerely



Keith Ramsay  
Chairman

Date: 21st December 2023

# Independent Examiner's Report

## Independent Examiner's Report to the Trustees of The Mid Yorkshire Hospitals NHS Trust Charitable Fund

I report on the financial statements of The Mid Yorkshire Hospitals NHS Trust Charitable Fund for the year ended 31 March 2023, which are set out on pages 43 to 62.

### Respective responsibilities of trustees and examiner

The charity's trustees are responsible for the preparation of the financial statements. The charity's trustees consider that an audit is not required for this year under section 144(2) of the Charities Act 2011 (the 2011 Act) and that an independent examination is needed.

It is my responsibility to:

- examine the financial statements under section 145 of the 2011 Act;
- follow the procedures laid down in the general Directions given by the Charity Commission under section 145(5)(b) of the 2011 Act; and
- state whether particular matters have come to my attention.

This report, including my statement, has been prepared for and only for the charity's trustees as a body. My work has been undertaken so that I might state to the charity's trustees those matters I am required to state to them in an independent examiner's report and for no other purpose. To the fullest extent permitted by law, I do not accept or assume responsibility to anyone other than the charity and the charity's trustees as a body for my examination work, for this report, or for the statements I have made.

### Basis of independent examiner's report

My examination was carried out in accordance with the general Directions given by the Charity Commission. An examination includes a review of the accounting records kept by the charity and a comparison of the financial statements presented with those records. It also includes consideration of any unusual items or disclosures in the financial statements and seeking explanations from you as trustees concerning any such matters. The procedures undertaken do not provide all the evidence that would be required in an audit and consequently no opinion is given as to whether the financial statements present a 'true and fair view' and the report is limited to those matters set out in the statement below.

### Independent examiner's statement

In connection with my examination, which is complete, no matters have come to my attention which give me reasonable cause to believe that in any material respect:

# Independent Examiner's Report

- accounting records were not kept in respect of The Mid Yorkshire Hospitals NHS Trust Charitable Fund in accordance with section 130 of the 2011 Act; or
- the financial statements do not accord with those records; or
- the financial statements do not comply with the applicable requirements concerning the form and content of financial statements set out in the Charities (Accounts and Reports) Regulations 2008 other than any requirement that the financial statements give a 'true and fair' view which is not a matter considered as part of an independent examination.

I have no concerns and have come across no other matters in connection with the examination to which, in my opinion, attention should be drawn in order to enable a proper understanding of the financial statements to be reached.



David Hoose (Jan 4, 2024 07:54 GMT)

David Hoose  
Mazars LLP  
5th Floor  
3 Wellington Place  
Leeds  
LS1 4AP

Date: Jan 4, 2024



# Statement of Financial Activities

## The Mid Yorkshire Hospitals NHS Trust Charitable Fund Statement of Financial Activities For the year ended 31 March 2023

	Note	Unrestricted funds £'000	Restricted funds £'000	Total funds 2022/23 £'000	Total funds 2021/22 £'000
<b>Income and endowments from</b>					
Donations and legacies	4	250	101	351	300
Charitable Activities	5	0	0	0	0
Other trading activities	6	39	26	65	71
Investment income	8	45	32	77	70
<b>Total incoming resources</b>		<b>334</b>	<b>159</b>	<b>493</b>	<b>441</b>
<b>Expenditure on</b>					
Raising funds	9	(53)	(88)	(141)	(99)
Charitable activities	10				
- Buildings and refurbishment		(80)	(5)	(85)	(130)
- Purchase of medical equipment		(86)	5	(81)	(27)
- Staff education and resources		(133)	(44)	(177)	(124)
- Patient welfare and amenities		(100)	(7)	(107)	(203)
		(399)	(51)	(450)	(484)
<b>Total expenditure</b>		<b>(452)</b>	<b>(139)</b>	<b>(591)</b>	<b>(583)</b>
Transfers between funds	21	0	0	0	0
Net gains/(losses) on investment	16	(84)	(65)	(149)	195
<b>Net movement in funds</b>		<b>(202)</b>	<b>(45)</b>	<b>(247)</b>	<b>53</b>
<b>Reconciliation of funds</b>					
Total funds brought forward	22	1,297	1,117	2,414	2,361
<b>Total funds carried forward</b>		<b>1,095</b>	<b>1,072</b>	<b>2,167</b>	<b>2,414</b>

The accompanying notes form part of these financial statements.

# Balance Sheet

## The Mid Yorkshire Hospitals NHS Trust Charitable Fund Balance Sheet as at 31 March 2023

	Note	Unrestricted funds £'000	Restricted funds £'000	Total funds 2022/23 £'000	Total funds 2021/22 £'000
<b>Fixed assets</b>					
Investments	16	1,203	929	2,132	2,282
<b>Total fixed assets</b>		<b>1,203</b>	<b>929</b>	<b>2,132</b>	<b>2,282</b>
<b>Current assets</b>					
Debtors	17	13	10	23	21
Cash and cash equivalents	18	110	367	477	560
<b>Total current assets</b>		<b>123</b>	<b>377</b>	<b>500</b>	<b>581</b>
<b>Liabilities</b>					
Creditors falling due within one year	19	10	(70)	(60)	(68)
<b>Net current assets/(liabilities)</b>		<b>133</b>	<b>307</b>	<b>440</b>	<b>513</b>
Provisions for liabilities	12, 19	(285)	(120)	(405)	(381)
<b>Total net assets</b>		<b>1,051</b>	<b>1,116</b>	<b>2,167</b>	<b>2,414</b>
<b>The funds of the charity</b>					
Restricted income funds	22	0	1,117	1,117	1,117
Unrestricted income funds	22	1,050	0	1,050	1,297
<b>Total charity funds</b>		<b>1,050</b>	<b>1,117</b>	<b>2,167</b>	<b>2,414</b>

The accompanying notes form part of these financial statements.

Approved on behalf of the Corporate Trustee by the Board of the Mid Yorkshire Hospitals NHS Trust and signed on its behalf by:



Keith Ramsay  
Chairman

Date: 21st December 2023

# Cash Flow Statement

The Mid Yorkshire Hospitals NHS Trust Charitable Fund  
Cash Flow Statement for the year ended 31 March 2023

	Note	Total funds 2022/23	Total funds 2021/22
<b>Cash flows from operating activities:</b>			
<b>Net cash provided by (used in) operating activities</b>	20	<u>(161)</u>	<u>(475)</u>
<b>Cash flows from investing activities:</b>			
Dividends, interest and rents from investments	8	<u>77</u>	<u>70</u>
<b>Net cash provided by (used in) investing activities</b>		<u>77</u>	<u>70</u>
 <b>Change in cash and cash equivalents in the reporting period</b>		 (83)	 (405)
<b>Cash and cash equivalents at the beginning of the reporting period</b>	18	<u>560</u>	<u>965</u>
<b>Cash and cash equivalents at the end of the reporting period</b>	18	<u>477</u>	<u>560</u>

## Notes to the Accounts

### 1. Accounting Policies

#### 1.1 Basis of preparation

The financial statements have been prepared under the historical cost convention, with the exception of investments which are included at fair value.

The accounts (financial statements) have been prepared in accordance with the Statement of Recommended Practice: Accounting and Reporting by Charities preparing their accounts in accordance with the Financial Reporting Standard applicable in the UK and Republic of Ireland (FRS 102) issued in October 2019 and the Financial Reporting Standard applicable in the UK and Republic of Ireland (FRS 102) and the Charities Act 2011 and UK Generally Accepted Practice as it applies from 1 January 2019.

The Trustee considers that there are no material uncertainties about The Mid Yorkshire Hospitals NHS Trust Charity's ability to continue as a going concern. The Covid-19 pandemic has had an impact on the charity's fundraising income although this is partially offset by restricted income from the NHS Charities Together national appeal. As a grant making charity with few on-going commitments, this will impact on the new grants that can be made in the short term rather than affecting the charity's ability to continue as a going concern. There are no material uncertainties affecting the current year's accounts.

In future years, the key risks to The Mid Yorkshire Hospitals NHS Trust Charitable Fund are a fall in income from donations or investment income but the trustee has arrangements in place to mitigate those risks (see the risk management and reserves sections of the annual report for more information).

# Notes to the Accounts

## 1.2 Funds structure

Where there is a legal restriction on the purpose to which a fund may be spent, the fund is classified either as:

- a restricted fund, or
- an endowment fund.

Restricted funds are those where the donor has provided for the donation to be spent in furtherance of a specified charitable purpose. The Mid Yorkshire Hospitals NHS Trust Charity's restricted funds tend to result from legacies.

Endowment funds arise when the donor has expressly provided that the gift is to be invested and only the income generated by the fund may be spent. The charity has no endowment funds.

Those funds which are neither endowment nor restricted income funds, are unrestricted income funds which are sub-analysed between designated funds where the Trustee has set aside amounts to be used for specific purposes or which reflect the non-binding wishes of donors and unrestricted funds which are at the Trustee's discretion, including the general fund, which represents the charity's reserves.

The major funds held in each of these categories are disclosed in note 22.

## 1.3 Incoming resources

All incoming resources are recognised once the Charity has entitlement to the resources, it is probable (more likely than not) that the resources will be received, and the monetary value of incoming resources can be measured with sufficient reliability.

## 1.4 Gifts in Kind

Gifts in kind, such as food and toiletries are not accounted for when they are accepted and immediately distributed.

Gifts of tangible assets such as artwork and children's toys are recognised as a donation at fair value (market price) on receipt and charitable expenditure when they are distributed.

## 1.5 Incoming resources from legacies

Legacies are recognised as incoming resources either upon receipt or where the receipt of the legacy is probable.



Receipt is probable when:

- confirmation has been received from the representatives of the estate that probate has been granted,
- the executors have established that there are sufficient assets in the estate to pay the legacy, and
- all conditions attached to the legacy have been fulfilled or are within the Charity's control.

If there is uncertainty as to the amount of the legacy and it cannot be reliably estimated, then the legacy is shown as a contingent asset until all of the conditions for income recognition are met. Material legacies which have been notified but not recognised as incoming resources in the Statement of Financial Activities are disclosed in a separate note to the accounts with an estimate of the amount receivable (note 23).

## **1.6 Resources expended and irrecoverable VAT.**

Expenditure is recognised when a liability is incurred. Grant commitments are recognised when constructive obligations arise that result in payments being unavoidable.

Grants are only made to related or third-party NHS bodies in furtherance of the charitable objects of the fund. Contractual arrangements are recognised as and when goods or services are supplied.

Irrecoverable VAT is charged against the category of resources expended for which it was incurred.

## **1.7 Recognition of liabilities and constructive obligations**

Grants are accounted for on an accrual's basis where the conditions for their payment have been met. Provisions are made for grants which are either of uncertain timing or amount. Constructive obligations are accounted for as provisions because of the uncertainty regarding the final cost and the date of payment.

## **1.8 Allocation of overhead and support costs**

Overhead and support costs do not directly relate to a single activity and include costs of administration, internal audit, independent examination, IT support and financial services. Fees are paid to a related party, the Mid Yorkshire Hospitals NHS Trust, for the administration and financial services provided to the Charity (see note 4). Overhead and support costs are apportioned between fundraising costs and charitable activities. The bases of apportionment and analysis are shown in note 13.

## **1.9 Costs of generating funds**

Costs to generate income for the Charity, other than those costs incurred in undertaking charitable activities are categorised as costs of generating funds. It includes fundraising costs and investment management fees.

# Notes to the Accounts

## 1.10 Charitable activities

Charitable activities comprise costs incurred in the pursuit of the charitable objects of the Charity and an apportionment of overhead and support costs as shown in note 13.

## 1.11 Investments

Investments are a form of basic financial instrument. Fixed asset investments are initially recognised at their transaction value and are subsequently measured at their fair value (mid-market value) as at the balance sheet date. The Statement of Financial Activities includes the net gains and losses arising on revaluation and disposals throughout the year. Quoted stocks and shares are included in the Balance Sheet at the mid-market value quoted by the investment analyst, excluding dividends. Costs on acquisition are included in the Statement of Financial Activities in the year of purchase.

A key financial risk faced by the Charity is that of volatility in equity markets and investment markets. This is due to the wider economic conditions, the attitude of investors to investment risk, and changes in sentiment concerning equities within particular sectors or sub sectors. Further information on the fixed asset investments can be found in note 16.

## 1.12 Debtors

Debtors are amounts owed to the charity. They are measured on the basis of their recoverable amount.

## 1.13 Cash and cash equivalents

Cash at bank and in hand is held to meet the day to day running costs of the charity as they fall due. Cash equivalents are short term investments held in deposit funds. The Charity holds a balance in a Charities Official Investment Fund (COIF) Charities Deposit Fund. Whilst balances maintained in the COIF are held for the longer term, they are highly liquid in nature, can be drawn down readily and therefore are classified as a cash equivalent. COIF invests in interest bearing deposits and pays a variable rate of interest based on returns generated. Interest is accrued for when it falls due.

## 1.14 Creditors

Creditors are amounts owed by the Charity. They are measured at the amount that the Charity expects to have to pay to settle the debt.

Amounts which are owed in more than a year are shown as long-term creditors.

# Notes to the Accounts

## 1.15 Provisions

Provisions are made where a liability has arisen which is either of uncertain timing or amount. A provision is only recognised when:

- there is a present obligation at the reporting date as a result of a past event,
- it is probable that a transfer of economic benefit, usually in the form of cash, will be required in settlement, and
- the amount of the settlement can be estimated reliably.

Constructive obligations are accounted for as provisions because of the uncertainty regarding the final cost and the date of payment.

## 1.16 Realised gains and losses.

All gains and losses are taken to the Statement of Financial Activities as they arise. Realised gains and losses on investments are calculated as the difference between sales proceeds and opening market value (purchase date if later). Unrealised gains and losses are calculated as the difference between the market value at the year end and opening market value (or purchase date if later).

## 2 Prior year comparatives

The primary statements provide prior year comparatives in total; this note provides prior period comparatives for the Statement of Financial Activities and the Balance Sheet for each of the three types of funds within the Charity.

# Notes to the Accounts

## 3 Related party transactions

The Mid Yorkshire Hospitals NHS Trust (the Trust) is the Charity's Corporate Trustee. For accounting purposes, this means that the Charity is deemed to be a subsidiary of the Trust as it is 'controlled' by another entity through the trusteeship arrangements. The Charity accounts are not consolidated in the Trust's accounts due to the immateriality of the Charity's transaction in the context of the group (Trust and Charity).

The Trust provides healthcare services to the people of Wakefield and North Kirklees districts in West Yorkshire.

NHS patients of the Trust are the main beneficiaries of the Charity. The Charity has made revenue and capital grant payments to the Trust for the benefit of NHS patients, these are detailed in note 10.

The Trust provides administration, clerical and financial services to the Charity, by agreement with the Corporate Trustee. These costs of £85k (2021/22: £85k) in support of the Charity's grant making activities are included within support costs. Included in expenditure on raising funds is £82k (2021/22: £96k) for fundraising services provided by the Trust.

Other creditors include £53k (2021/22: £62k) for outstanding support costs and grants owed to the Trust, in furtherance of the Charity's objects. Included in provisions for liabilities is £405k (2021/22: £381k) in respect of grants that the Charity has an obligation to pay when they fall due, see note 19.

During the year none of the members of the NHS Trust Board or senior NHS Trust staff or parties related to them were direct beneficiaries of the Charity.

Neither the Corporate Trustee nor any member of the NHS Trust Board has received emoluments, expenses or benefits in the year other than in their capacity as employees of the Mid Yorkshire Hospitals NHS Trust and in line with the ordinary use of funds. The Charity has purchased Trustee indemnity insurance on behalf of the Corporate Trustee due to increased fundraising activities and associated risks.

# Notes to the Accounts

## 4 Analysis of donations and legacies

	Unrestricted funds £'000	Restricted funds £'000	Total 2022/23 £'000	Total 2021/22 £'000
Donations from individuals	55	0	55	61
Donations from charities	104	0	104	1
Corporate donations	90	0	90	88
Legacies	1	101	102	150
<b>Total donations and legacies</b>	<b>250</b>	<b>101</b>	<b>351</b>	<b>300</b>

Donations from individuals are gifts from members of the public, staff, patients, and their relatives.

## 5 Analysis of income from Charitable Activities

	Unrestricted funds £'000	Restricted funds £'000	Total 2022/23 £'000	Total 2021/22 £'000
Phase 1 Grant from NHS Charities Together	0	0	0	0
Phase 2 Grant from NHS Charities Together	0	0	0	0
Emergency Grant from NHS Charities Together	0	0	0	0
Phase 3 Grant from NHS Charities Together	0	0	0	0
<b>Total income from charitable activities</b>	<b>0</b>	<b>0</b>	<b>0</b>	<b>0</b>

## 6 Analysis of income from other trading activities

	Unrestricted funds £'000	Restricted funds £'000	Total 2022/23 £'000	Total 2021/22 £'000
Fundraising income	39	26	65	71
<b>Total income from other trading activities</b>	<b>39</b>	<b>26</b>	<b>65</b>	<b>71</b>



# Notes to the Accounts

## 7 Role of volunteers

The Charity is reliant on volunteers who carry out 3 roles:

- Fund holders – who are responsible for the administration of a specific fund account of the Charity at ward/department level.
- Fund managers – who are responsible for reviewing all requests for expenditure before submission to the Charity. Fund Managers are senior managers of the Trust and responsible for fund accounts which fall within their area of responsibility.
- Fundraisers – members of the public, patients, relatives and staff raise funds for the Charity in various ways including, for example, holding events such as balls and cake stalls as well as running marathons.

In accordance with the SORP, due to the absence of any reliable measurement basis, the contribution of these volunteers is not recognised in the accounts.

## 8 Investment income

	Unrestricted funds £'000	Restricted funds £'000	Total 2022/23 £'000	Total 2021/22 £'000
<b>Fixed asset investments</b>				
Charities Ethical Investment Funds	33	24	57	56
Charities Property Fund	8	6	14	14
<b>Cash equivalents</b>				
Common Deposit Fund	4	2	6	0
<b>Total investment income</b>	<b>45</b>	<b>32</b>	<b>77</b>	<b>70</b>

The Charity's investments and cash equivalents are held by CCLA Investment Management.

The Charity receives income in the form of dividends from its fixed asset investments and interest from its cash equivalents.

## 9 Analysis of expenditure on raising funds

	Note	Unrestricted funds £'000	Restricted funds £'000	Total 2022/23 £'000	Total 2021/22 £'000
Fundraising costs		53	88	141	99
<b>Total expenditure on raising funds</b>		<b>53</b>	<b>88</b>	<b>141</b>	<b>99</b>

# Notes to the Accounts

## 10 Analysis of expenditure on charitable activities

The Charity did not undertake any direct charitable activities during the year. All of its charitable expenditure was in the form of grant funding.

The Charity made grants to Mid Yorkshire Hospitals NHS Trust in support of a range of charitable activities to benefit NHS patients and their families.

	<b>Grant funded activity</b>	<b>Support costs</b>	<b>Total</b>	<b>Total</b>
	<b>2022/23</b>	<b>Note 12</b>	<b>2022/23</b>	<b>2021/22</b>
	<b>£'000</b>	<b>£'000</b>	<b>£'000</b>	<b>£'000</b>
Buildings and refurbishment	73	12	85	130
Purchase of medical equipment	73	8	81	27
Staffing education and resources	127	50	177	124
Patient welfare and amenities	75	32	107	203
<b>Total</b>	<b>348</b>	<b>102</b>	<b>450</b>	<b>484</b>

## 11 Analysis of grants

The Corporate Trustee operates a scheme of delegation, through which all grant funded activity is managed by fund administrators responsible for the day-to-day disbursements in accordance with the directions set out by the Trustees in the Charity standing orders and financial instructions. The Charity has not made any grants to individuals. All grants were made to Mid Yorkshire Hospitals NHS Trust. The total cost of making grants is included within charitable activities analysis on the face of the Statement of Financial Activities. The grants received for each category of charitable activity are disclosed in note 10.

## 12 Provisions for liabilities

	<b>Total</b>	<b>Total</b>
	<b>2022/23</b>	<b>2021/22</b>
	<b>£'000</b>	<b>£'000</b>
Opening balance at 1 April (see note 19)	381	522
Arising during the year	360	464
Utilised during the year	(239)	(496)
Released during the year	(97)	(109)
<b>Closing balance at 31 March (see note 19)</b>	<b>405</b>	<b>381</b>

Current liabilities are amounts owed for support costs and to reimburse for grants which are paid retrospectively. Provisions for liabilities represent constructive obligations and include grants which are committed to, where the amounts and/or timing of payments are not yet known.

# Notes to the Accounts

## 13 Allocation of support costs and overheads

Support costs and overheads are allocated between fundraising and charitable activities. Governance costs are those support costs which relate to the strategic and day to day management of a charity. The costs of fundraising services and overheads are directly charged to fundraising costs, note 9.

	Note	Charitable activities £'000	Total 2022/23 £'000	Total 2021/22 £'000	Basis
Independent examination	15	2	2	2	Expenditure
Administration services		19	19	19	Transactions
<b>Governance</b>		<b>21</b>	<b>21</b>	<b>21</b>	
Administration services		81	81	70	Transactions
<b>Total</b>	<b>10</b>	<b>102</b>	<b>102</b>	<b>91</b>	
Restricted funds		40	40	38	
Unrestricted funds		62	62	53	
		<b>102</b>	<b>102</b>	<b>91</b>	

The bases of allocation used are as follows:

Basis	Description
Expenditure	Proportion by total expenditure per charitable activity.
Transaction	On average each transaction takes a similar amount of time to process. The number of transactions is used as a proxy to the time and hence cost of processing transactions. This basis allocates costs according to the number of transactions of each charitable activity.
Direct allocation	Specific allocation where the cost is wholly attributable to a particular activity.

# Notes to the Accounts

## 14 Trustee's remuneration, benefits and expenses

The Corporate Trustee gives its time freely and its Board members receive no remuneration for the work that is undertaken as Trustee. No other benefits were received.

## 15 Independent examiner's remuneration

The independent examiner's remuneration of £2,400 (2021/22: £2,400) relates solely to the independent examination with no other additional work undertaken in either year.

## 16 Fixed asset investments

### Movement in fixed asset investments

	2022/23	2021/22
	£'000	£'000
Market value brought forward	2,282	2,087
Add net gain/(loss) on revaluation	(149)	195
<b>Market value as at 31st March</b>	<b>2,133</b>	<b>2,282</b>

### Fixed asset investments by type

	2022/23	2021/22
	£'000	£'000
COIF Charities Ethical Investment Fund	1,860	1,957
COIF Charities Property Fund	273	325
<b>Total</b>	<b>2,133</b>	<b>2,282</b>

All investments are carried at their fair value.

## Financial Instruments

All investments are carried at their fair value, which is market price. Asset sales and purchases are recognised at the date of trade, at cost (that is their transaction value).

The significance of financial instruments to the on-going financial sustainability of the Charity is considered in the investment policy and risk section of the Trustee annual report.

The main risk from financial instruments lies in the combination of uncertain investment markets and volatility in yield. Although the asset allocation should result in a stable dividend yield, there are risks that the market conditions will affect the capital values.

# Notes to the Accounts

Liquidity risk is anticipated to be low as all assets are traded and the commitment to intervention by central banks and market regulators has continued to provide for orderly trading in the markets and so the ability to buy and sell quoted equities and stock is anticipated to continue.

The Charity's investments are mainly traded in markets with good liquidity and high trading volumes. The Trust has no material investment holdings in markets subject to exchange controls or trading restrictions.

The Charity manages these investment risks by utilising professional investment advisors and operating an investment policy that provides for a high degree of diversification in a range of investment asset classes. The Charity does not make use of derivatives and similar complex financial instruments as it takes the view that investments are held for their longer term yield total return and historic studies of quoted financial instruments have shown that volatility in any particular 5-year period will normally be corrected.

## 17 Analysis of current debtors

	<b>2022/23</b>	<b>2021/22</b>
	<b>£'000</b>	<b>£'000</b>
Accrued income	19	18
Prepayments	<u>4</u>	<u>3</u>
<b>Total debtors</b>	<b><u>23</u></b>	<b><u>21</u></b>

## 18 Analysis of cash and cash equivalents

	<b>2022/23</b>	<b>2021/22</b>
	<b>£'000</b>	<b>£'000</b>
Cash at bank	213	296
COIF Charities Deposit Fund	<u>264</u>	<u>264</u>
<b>Total cash and cash equivalents</b>	<b><u>477</u></b>	<b><u>560</u></b>

The deposit fund is cash held in a COIF (Charity Official Investment Fund) Deposit Fund. In accordance with the SORP, this is classified as a cash equivalent as it is highly liquid and readily accessible. The Charity holds it on deposit for the longer term and draws down amounts as necessary to fulfil obligations for grant payments.

No cash or cash equivalents were held in non-cash investments or outside of the UK.



# Notes to the Accounts

## 19 Analysis of liabilities

	2022/23 £'000	2021/22 £'000
<b>Creditors falling due within one year</b>		
Accruals for grants owed to NHS bodies	53	63
Other accruals	<u>7</u>	<u>5</u>
	60	68
<b>Provisions for liabilities</b>		
Accruals for grants owed to NHS bodies	405	381
<b>Total liabilities</b>	<u>465</u>	<u>449</u>

Current liabilities are amounts owed for the payment of grants which have already been made. Provisions for liabilities represent constructive obligations and includes for grants which have been committed but the amount and/or timing of the payment is not yet known.

## 20 Reconciliation of net income/(expenditure) to net cash flow from operating activities.

<b>Net income/(expenditure) for 2022/23 (as per the Statement of Financial Activities)</b>	<b>(247)</b>	<b>53</b>
<b>Adjustments for:</b>		
(Gains)/losses on investments	149	(195)
Dividends and interest from investments	(77)	(70)
(Increase)/decrease in debtors	(2)	10
Increase/(decrease) in creditors	(8)	(132)
Increase/(decrease) in provisions	24	(141)
<b>Net cash provided by (used in) operating activities</b>	<b><u>(161)</u></b>	<b><u>(475)</u></b>

## 21 Transfers between funds

There have been no transfers between restricted and unrestricted funds in 2022/23.

# Notes to the Accounts

## 22 Analysis of charitable funds

Analysis of fund movements for the year ended 31 March 2023

	Balance at 1st April 2022 £'000	Income £'000	Expenditure £'000	Gains and losses £'000	Transfers £'000	Balance at 31st March 2023 £'000
<b>a) Restricted funds</b>						
Arthur Armitage	89	2	(4)	(3)	0	84
COVID-19 (Staff Benefit)	58	5	(20)	(5)	0	38
COVID-19 (General Purpose)	13	0	0	0	0	13
Pinderfields Hospital Chest Unit Services	61	2	(4)	(3)	0	56
Pinderfields Burns Research	38	1	(2)	(2)	0	35
Coronary Care	22	0	(1)	(1)	0	20
Cancer Services	182	5	(11)	(9)	0	167
Urology	28	1	(5)	(1)	0	23
Colorectal and Cancer Services	3	0	0	0	0	3
MRI Appeal Fund	1	24	(2)	(1)	0	22
ICU	29	1	11	(2)	0	39
Rheumatology & Physio Equipment DDH	143	5	(11)	(9)	0	128
PGL (Restricted)	34	2	(5)	(4)	0	27
Oncology/Haematology	46	1	(3)	(2)	0	42
NRC/Stroke Unit	25	1	(5)	(1)	0	20
Neurological Fund	298	8	(19)	(16)	0	271
Pinderfields Burns Centre	47	1	(3)	(3)	0	42
Diabetes Centre PGH	0	101	(13)	(1)	0	87
<b>Restricted funds total</b>	<b>1,117</b>	<b>160</b>	<b>(97)</b>	<b>(63)</b>	<b>0</b>	<b>1,117</b>
<b>b) Unrestricted and material designated funds</b>						
Other designated funds	1,297	333	(494)	(86)	0	1,050
<b>Unrestricted funds total</b>	<b>1,297</b>	<b>333</b>	<b>(494)</b>	<b>(86)</b>	<b>0</b>	<b>1,050</b>
<b>Total</b>	<b>2,414</b>	<b>493</b>	<b>(591)</b>	<b>(149)</b>	<b>0</b>	<b>2,167</b>

# Notes to the Accounts

	Balance at 1st April 2021 £'000	Income £'000	Expenditure £'000	Gains and losses £'000	Transfers £'000	Balance at 31st March 2022 £'000
<b>a) Restricted funds</b>						
Arthur Armitage	84	2	(4)	7	0	89
COVID-19 (Staff Benefit)	58	11	(21)	10	0	58
COVID-19 (General Purpose)	8	14	(13)	4	0	13
Pinderfields Hospital Chest Unit Services	61	2	(4)	2	0	61
Pinderfields Burns Research	35	1	(2)	4	0	38
Coronary Care	22	0	(1)	1	0	22
Cancer Services	177	4	(11)	12	0	182
Urology	27	1	(2)	2	0	28
Colorectal and Cancer Services	3	0	0	0	0	3
MRI Appeal Fund	0	1	0	0	0	1
ICU	38	1	(13)	3	0	29
Rheumatology & Physio Equipment DDH	0	143	(1)	1	0	143
PGI (Restricted)	26	7	(5)	6	0	34
Oncology/Haematology	45	1	(3)	3	0	46
NRC/Stroke Unit	24	1	(2)	2	0	25
Neurological Fund	289	8	(20)	21	0	298
Pinderfields Burns Centre	46	1	(3)	3	0	47
<b>Restricted funds total</b>	<b>943</b>	<b>198</b>	<b>(105)</b>	<b>81</b>	<b>0</b>	<b>1,117</b>
<b>b) Unrestricted and material designated funds</b>						
Other designated funds	1,418	243	(478)	114	0	1,297
<b>Unrestricted funds total</b>	<b>1,418</b>	<b>243</b>	<b>(478)</b>	<b>114</b>	<b>0</b>	<b>1,297</b>
<b>Total</b>	<b>2,361</b>	<b>441</b>	<b>(583)</b>	<b>195</b>	<b>0</b>	<b>2,414</b>

All endowment and restricted funds are reported separately. The Trustee set an opening or closing balance of £100,000 or above as the threshold for reporting material designated funds. In the interests of accountability and transparency a complete breakdown of all designated (earmarked) funds is available upon written request.

Name of fund	Description, nature, and purposes of the fund
Arthur Armitage	A restricted legacy from Arthur Armitage to provide medical and scientific equipment and associated supporting consumables for patients remaining under the care of a Pinderfields Hospital consultant to enable them to live in the community.
Covid-19 (Staff Benefit)	A restricted fund consisting of donations and fundraising during the Covid-19 pandemic for the specific use of benefitting Staff.
Covid-19 (General Purpose)	A restricted fund consisting of donations and fundraising during the Covid-19 pandemic for the specific use of benefitting Patients

# Notes to the Accounts

PGH chest unit services	A restricted legacy for the services stated.
Diabetes centre PGH	A restricted legacy for the services stated.
Pinderfields Burns Research Fund	A restricted legacy promoting for the benefit of the public, the study into burn prevention, burn treatment and burn care and to promote and co-ordinate research into the scientific, clinical, and social aspects of burns and arrange for the results of the research to be published.
Coronary Care and Cancer Services	A restricted legacy for the services stated.
Cancer Services	A restricted legacy for the services stated.
Urology	A restricted legacy for the service stated.
Colorectal and Cancer Services	A restricted legacy for the services stated.
Intensive Care Unit	A restricted legacy for the Intensive Care unit at Pinderfields Hospital.
PGI (Restricted)	A restricted legacy for the specific use of patient care and equipment provision at Pontefract Hospital.
MRI Appeal Fund	A restricted legacy for the services stated.
Oncology/Haematology	A restricted legacy for the Oncology Day Unit.
NRC/Stroke Unit	A restricted legacy for the Neuro Rehabilitation Centre/Stroke Unit.
Neurological Fund	A restricted legacy for the ongoing treatment and care of neurological disorders.
Pinderfields Burns Centre	A restricted legacy for the Pinderfields Burns Centre.
Rheumatology & Physio Equipment DDH	A restricted legacy for the services stated.

# Notes to the Accounts

Other Designated Funds	There are 59 (2021/22:59) other designated fund accounts relating to wards and clinical departments within the Mid Yorkshire Hospitals NHS Trust for which donors have indicated their non-binding wishes when making their donations.
------------------------	--

## 23. Material legacies and contingent assets

Legacy income is only included in incoming resources where receipt is probable and the amount is known with certainty, or the legacy has been received. In 2022/23, £0k (2021/22: £0k) is included in accrued income.

The Charity has been made aware of further legacies to which it may be entitled. The amounts and timing of these legacies is yet unknown; hence it is not included within incoming resources.

Thank You

On behalf of the patients and staff who have benefitted from improved services due to donations and legacies, the Corporate Trustee would like to thank all those individuals, families, and societies which so generously donated funds during the year.

Should you wish to donate please complete the form below and send a cheque, made payable to MY Hospitals Charity, to MY Hospitals Charity, Trust HQ & Education Centre, Pinderfields Hospital, Aberford Road, Wakefield, WF1 4DG.

Or if you would like to set up a sponsorship page and donate the proceeds to this Charity you may also use the Justgiving website [www.justgiving.com/midyorkshospital](http://www.justgiving.com/midyorkshospital)

### Donation details

Name: I \_\_\_\_\_

Address: of \_\_\_\_\_

give to MY Hospitals Charity the sum of £\_\_\_\_\_ for the general purpose of that Charity without imposing a separate trust. I would like to gift aid my donation. I am a UK taxpayer and the tax I will pay in this tax year will exceed the amount you can reclaim on this donation.

Signature: \_\_\_\_\_ Date: \_\_\_\_\_





**The Mid Yorkshire Hospitals**  
NHS Trust



**MY Hospitals Charity**

**Registered Charity No. 1067163**

The mission of MY Hospitals Charity is to support The Mid Yorkshire Hospitals NHS Trust to provide excellent patient care and experience.

We do this by funding additional enhancements above and beyond NHS funding provision.



Registered with  
**FUNDRAISING  
REGULATOR**

