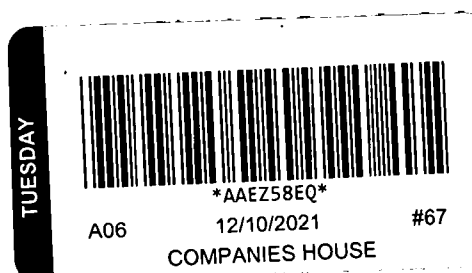


Charity Registration No. 1066846

Company Registration No. 3445897 (England and Wales)

VINEYARD CHRISTIAN FELLOWSHIP OF ST ALBANS
ANNUAL REPORT AND FINANCIAL STATEMENTS
FOR THE YEAR ENDED 31 DECEMBER 2020



VINEYARD CHRISTIAN FELLOWSHIP OF ST ALBANS

CONTENTS

	Page
Trustees' Annual report	1 - 12
Independent auditor's report	13 - 15
Statement of financial activities	16
Statement of financial position	17
Statement of cash flows	18
Notes to the financial statements	19 - 30
Financial activities for Care Centre Fund (Appendix not being part of the audited financial statements)	31 - 33

VINEYARD CHRISTIAN FELLOWSHIP OF ST ALBANS

TRUSTEES' ANNUAL REPORT

FOR THE YEAR ENDED 31 DECEMBER 2020

The trustees are pleased to present their report and the financial statements of the charitable company for the year ended 31st December 2020.

DIRECTORS AND OFFICERS

The trustees of the charitable company are also its directors for the purposes of company law. This trustees' annual report therefore also contains the information required for a directors' report under company law. In this report the directors are collectively referred to as the trustees or the management committee. The charitable company throughout this report is referred to as the church.

The trustees serving during the year and since the year-end are as follows:

Mr Mark Helvadjian
Mr Bruce McKinnon
Mrs Ruth Robb
Dr Andrea Taylor-Cummings
Mr Tim Winfield
Dr Mark Bevis (resigned 27 February 2020)

Company Secretary:
Senior Pastor/Chief Executive Officer:

Mrs Gil Yon
Mr Mark Helvadjian

OBJECTIVES AND ACTIVITIES

The objects of the church, as stated in the Memorandum of Association, are the advancement of the Christian faith in the United Kingdom and throughout the world, the furtherance of religious or secular public education, the relief of the poor, needy, sick and elderly, and other such objects as the management committee shall see fit

In fulfilling these objectives, the church holds Christian services, provides educational and training sessions, provides children's and youth activities, and performs acts of service and charity within the local community, the wider area and overseas. The church employs a number of staff and owns a worship centre, dedicated children's and youth facilities, a foodbank warehouse and 'supermarket' for those in need, offices and kitchen, café and recreational areas to support these activities.

At the beginning of 2020 the Senior Pastor, Mark Helvadjian, communicated to leaders in the church a vision for the outworking of our passion for people to encounter Jesus, so that lives are eternally transformed, whole communities and nations are impacted, He is glorified and magnified in our midst, the enemy flees, and His Kingdom is extended. This would be fulfilled by extending our reach beyond our current thinking, beyond our current limitations and beyond our borders. We look to do this by creating new spaces and places where people can encounter Jesus.

The outworking of this would be through use of our current facilities in both developing the physical space with a new connect lounge, youth facilities and creative worship spaces and exploring new ways of using our current facilities with new services reaching those who cannot access existing services, events, conferences and training, and the development of the Care Centre to provide pathways for guests to move forward.

Additionally, providing new spaces and places regionally through multiple geographical sites, nationally through church planting and globally through mission partnerships and church planting.

The church seeks to provide specific activities which are aimed at the public in general but also welcomes people to participate in the life of the church in all areas, with consideration to the Charity Commission's guidance on public benefit. Specific activities include, but are not limited to, the following:

- The Care Centre which includes the FEED foodbank, KIT (clothing and resource for children), life skills and support pathways for those in need
- Courses such as pre-marriage, marriage, parenting, life skills etc.
- Children and youth programmes
- Hosting other organisations providing services which benefit the community e.g. Blood Donation sessions
- Providing opportunities to be part of a supportive and diverse community doing life together

VINEYARD CHRISTIAN FELLOWSHIP OF ST ALBANS

TRUSTEES' ANNUAL REPORT (CONTINUED)

FOR THE YEAR ENDED 31 DECEMBER 2020

Activities planned for the year

The restrictions of the Coronavirus pandemic resulted in many of the activities planned for this year not being completed. Many of the plans that focused on gathering people together physically through events or small groups were not possible and the specific plans for the children's and youth ministry, worship and in-person courses were particularly impacted. Development plans for the building were also put on hold as other priorities took precedence. Where still relevant, those unmet plans have been summarised and incorporated into the future plans and completion will be dependent upon the continuing easing of restrictions.

The trustees have moved away from the Gather, Grow, Give grouping of activities presented in previous trustee reports to present the significant activities of the church under the new activity headings outlined as the trustees consider this presents more clearly the main activities of the church during the current year and in the future. The activities that were planned for this year where progress has been made or approached in alternative ways were:

Services and events

- Continue to provide worship music for our Sunday services
- Invest in and improve the quality of the music equipment
- Improve worship social media presence
- Create a new Registration and Steward team role for Sunday services
- Update the technology for registration for Vineyard Kids, Ventureland and Youth
- Continue to address car-parking needs on Sunday mornings and look at ways to increase capacity
- Plan and host annual outreach events for kids
- Youth participation in the Big Weekend in February 2020. A residential weekend with quality teaching, worship and fellowship
- Youth attendance at the new Vineyard UK DTI summer camp

Discipleship and pastoral

- Alpha Courses to be run again with an expected increase in numbers of attendees
- Continue to run Equip courses with a closer alignment between these and current church objectives and clearly disciple people through all stages of their journey in Christ
- A new one-day course called Marriage by Design has been developed to replace the Pre-Marriage course that ran over 6 weeks. The first course to take place in March
- The RISE women's group to continue to meet and grow
- Launch new Connect Group types – bible study, activity and focus groups
- Design and implement a youth mentoring programme to create space and time to explore individual needs on a one-to-one basis.
- Build a team of volunteers to act as mentors for the youth mentoring programme
- Create opportunities for young people to grow as disciples of Jesus
- Empower young people to share faith and grow in leadership. Identify young leaders and invest in them by providing opportunities for leadership roles
- Identify new leaders and their gifts and callings
- Introduce a weekly prayer appointment system and prayer team
- Develop Prayer Ministry into a clear range of options
- Provide ongoing pastoral support for ministry leaders and staff

Community

- Continue our financial support to the Bethesda Orphanages in India for the 120 children who live there
- Continue to financially support STEP, a charity working in local secondary schools to share the Christian faith in a lively, relevant and consistent way
- The church building to continue to be made available to the NHS Blood & Transfusion team as a venue for blood donation

VINEYARD CHRISTIAN FELLOWSHIP OF ST ALBANS

TRUSTEES' ANNUAL REPORT (CONTINUED)

FOR THE YEAR ENDED 31 DECEMBER 2020

Care Centre

- Undertake a review of needs of Care Centre guests who engage with services on a medium or long-term basis and assess what services and courses would offer more support
- Run an Alpha course for Care Centre daytime guests
- Increase our drop-in clinics and training courses for Care Centre guests to tackle some of the root causes of poverty
- The Care Centre to continue to grow its connections with outside agencies (Mind, St Albans District Council, Family Centres etc) to further enhance its offering of support for guests
- Evaluate the long-term development of sustainable food provision and research feasibility of holistic model for Care Centre
- Continue to work with Oaklands College to support students and help them gain work experience and link guests with opportunities at local colleges

Business support and operations

- Recruit for Care Centre roles of Warehouse Manager and Care Centre Supervisor
- The Business & Operations team to continue to provide support to the staff and wider church to enable ministries to operate and grow effectively
- The Business & Operations team to continue to develop systems and processes to provide a foundation for future growth in a sustainable and scalable way
- The staff to once again attend the Vineyard National Leaders' Conference at Trent Vineyard in Nottingham in January
- The church to restructure its mortgage financing to include an option to extend the loan provision to complete the final phase of building development

ACHIEVEMENTS AND PERFORMANCE

Services and events

Sunday congregation numbers were strong at the beginning of the year with some Sundays seeing over 1,000 people onsite during the morning. This reflected the growth pattern we had seen develop over the previous year and on which some of our plans for 2020 were based. Early in the year, new investment in technology for registration systems for children's and youth ministries made registration more efficient and a new team of people were trained in how to use it. Also, the parking capacity for Sunday services was significantly increased when a neighbouring business gave the Church permission to use their car park on Sundays. However, from March we were forced to close the church for onsite services as the Coronavirus situation developed and we had to adapt rapidly and responsively to change the way we operated, moving our Sunday services and other activities to an online format.

The online content has developed and evolved over the year as the team, both staff and volunteers, have adapted and new technology has been utilised. A collection of content has been built up over the year and can be accessed through the app or the church's YouTube channel. Following the easing of lockdown restrictions in the latter part of 2020, we opened our main Sunday service to in-person gatherings, as well as continuing to stream live for people to attend virtually. There have been opportunities for the Worship team to incorporate different styles of worship into the online services including pre-recorded acoustic sets by individuals. Towards the year end there was significant investment in sound and vision equipment to support live online streaming of services. With the services initially being pre-recorded and the notices still being in this format, involvement in the Sunday services has become more accessible and helped to develop leadership skills in a wider range of people. The number of those engaging with the online services has varied over the year but has generally been strong and several new people have joined the church during this time. Although not as we had planned, the move to online services has enabled an out working of the vision to extend our reach, providing a new space for people to encounter Jesus, some of which would not have been able to access the service if it were only available on site.

The children's pastors have also adapted to the situation and have been providing online content every Sunday for children to engage with and accompanying resources for parents to access. Ventureland content had average weekly views of 68 families, and Village Kids had average weekly views of 54 families. In addition to the regular weekly content, 'Hark! A Nativity Story' was broadcast live at Christmas and was viewed by 129 families. 100 families also participated in an on-line Family Christmas Praise Party. The Christmas Family Service attracted 818 families and individuals.

VINEYARD CHRISTIAN FELLOWSHIP OF ST ALBANS

TRUSTEES' ANNUAL REPORT (CONTINUED)

FOR THE YEAR ENDED 31 DECEMBER 2020

As well as their normal weekly activities, the youth were able to participate in the Big Weekend Away at the beginning of February where 100 youth and 12 team spent the weekend at a residential site in Kent. The youth have continued to meet throughout the year with either online live streamed sessions or at times when COVID-19 restrictions allowed, a limited number have participated in live youth services in the building. Although the DTI summer camp could not take place in person, the youth were able to access DTI online.

Some events that had been planned to take place face to face, were moved online where possible or at times when restrictions allowed, in a blended format, where limited people were in the church building and it was also streamed live online. Blended events included the weekly breakthrough prayer meeting and fortnightly women's meeting, RISE. An Acoustic Café session was hosted online attracting 75 participants.

The lockdown also provided opportunity for new events including a Facebook live discussion series over 9 weeks (peak viewing figures 1,131), midweek messages from Mark Helvadjan (peak viewing figures 1,306), and updates from the Trustees.

St Albans Vineyard Church is a diverse community of people, but the death of George Floyd acted as a catalyst for the community to stop and reflect. There is diversity but is there inclusivity? An online panel discussion, 'A Conversation about Race', with expert guests was accessed by 218 households. It was an open and honest conversation about the issues of race and helped inform people and define the issues.

Discipleship and pastoral

Building upon 'A Conversation about Race', people were invited to share their own experiences with the Church leadership and as a community we prayed for healing and restoration. Later in the year, a dedicated connect group was formed to discuss the book 'Be the Bridge' by Latasha Morrison. Other resources were made available, and the staff team have benefited from ongoing inclusivity training.

Some courses took place online only such as Alpha and the Equip training courses and again this was accessed by some people who would not have attended an onsite only event. A new three-part relationships webinar series gave insight and practical steps in improving relationships. The webinar series was well received with peak viewing figures of 844.

As well as the online and blended events, RISE creatively offered spaces and places for women to meet and share in life together in smaller groups, when permitted, at outside locations.

Connect groups have continued where possible making use of Zoom, messaging and phone calls to maintain connection between people and provide prayer and support as required. A regular online art for wellbeing Connect group was launched by one of the members of RISE, increasing the diversity offered through Connect groups. Other new groups have formed over the year in response to the need for greater support and were enabled by being able to meet virtually rather than in person.

Work started to put in place the structure and processes for the youth mentoring programme. This is an area the church is committed to and hopes to implement in the coming year. There have been many opportunities for the youth to take up new roles arising from the move to online content and to be actively involved in leading the youth services.

Pastoral support for the church members and wider community has been of great importance over such an uncertain and challenging year and the pastoral staff and volunteers have had to develop and adapt to continue to provide support in accordance with COVID-19 restrictions.

The Sunday ministry team, SMT (small ministry teams) and prayer net have continued to offer prayer and support to those who request it and during the lockdown period this has been facilitated through email, phone calls and video calls. The prayer team continued to meet remotely for words of knowledge before the services. Prayer can be requested during the online service by clicking on a link and a written response is received. The online technology has extended the reach of prayer beyond those within the building. In addition, the staff and volunteer pastoral team have sought to contact church members who may not otherwise be supported through small groups or volunteer teams.

The pastoral website content was also updated during the year to improve access to the pastoral team and prayer support. Additionally, signposting to other organisations and websites offering support in areas such as counselling, mental health support, addiction and the Care Centre were added.

VINEYARD CHRISTIAN FELLOWSHIP OF ST ALBANS

TRUSTEES' ANNUAL REPORT (CONTINUED)

FOR THE YEAR ENDED 31 DECEMBER 2020

Community

The church has continued to support the Bethesda Orphanages in India both financially and through prayer. The number of children cared for has increased and several widows are also residents at the orphanages.

The church has maintained its financial support for STEP, a charity working in local secondary schools to share the Christian faith. Greater links have been made with the charity in the period which may facilitate youth outreach in the future.

In addition to the Care Centre activities and permitted church activities, the building has continued to be used as a site for NHS blood donation sessions throughout the year, with additional sessions being facilitated when requested.

Care Centre

The Care Centre has remained open throughout the year. There has been significant growth during this time, both in the number of guests it serves and the income it has attracted. The Care Centre staff team has also increased with 3 new staff coming on board during the year.

The format of the weekly foodbank sessions has changed and developed over the year in line with the changing restrictions and guidance. Much of this was facilitated by being able to access more space within the church building as other church activities were forced to close. This enabled COVID-19 safe systems to be put in place and storage for the increased requirement of stock to meet the needs of both individuals accessing the Care Centre as well as providing support to other charities in the community.

The Care Centre provides not only food and other items but also a growing number of support services through access to legal, financial, skill and care support. This has continued over the year but most of the face-to-face support was suspended during the lockdown. Support in these areas has continued through telephone contact and Zoom based groups including a new Zoom café to meet guests' social needs in lockdown. This also enabled the team, many of whom who were not able to serve onsite during the year, to provide support from home. Relationships with outside agencies have strengthened during the year with an increased number of referrals.

The Appendix to the financial statements shows the financial position of the Care Centre Fund in 2020 and additional information relating to the services provided.

Business support and operations

The staff team remained predominantly stable throughout the year with one resignation, the Care Centre Van Driver in August. There were three new staff appointed to the Care Centre in 2020. These staff were essential given the increased demand for services and were possible due to increased financial support for the Care Centre. The Care Centre Families Worker started in January, the Care Centre Warehouse Manager started in September and the Care Centre Supervisor joined in December.

Works have taken place on the building to enable activities to take place in a COVID-19 secure manner where restrictions have allowed, and risk assessments have been done and updated as required.

Many of the staff were able to work from home during the year in line with government guidance and where staff were required to be onsite, appropriate measures were put in place to minimise risks during the pandemic. As normal operations were significantly affected by the pandemic and subsequent government restrictions, the government's Coronavirus Job Retention Scheme was utilised for several employees. There have been changes to facilitate remote working such as a move away from paper records to online processes and documentation and use of video calls for meetings etc.

There was a refinancing of the mortgage facility at the start of the year with agreement for additional finance to complete the development of the building. Building works were not progressed in the year due to the pandemic and will be reassessed in 2021.

VINEYARD CHRISTIAN FELLOWSHIP OF ST ALBANS

TRUSTEES' ANNUAL REPORT (CONTINUED)

FOR THE YEAR ENDED 31 DECEMBER 2020

FINANCIAL REVIEW

Financial position

The trustees are pleased to report another satisfactory year for 2020 in relation to the finances of the church, which is very encouraging given the impact and uncertainty caused by the Coronavirus pandemic.

The budget for the year had been set with an expectation of growth in income in line with the trends seen during 2019 and the plans to support this growth further in 2020 and whilst this was significantly impacted when the church was forced to close its physical doors in March 2020, general fund voluntary donations were consistent with the previous year by the end of the period although notably under budgeted levels.

Funding through the Coronavirus Job Retention Scheme compensated for some of the income lost through the move to online services and challenges in engaging with church members and seeing continued growth. The trustees and management met frequently and close monitoring of weekly finances and tighter control over expenditure enabled finances to be managed throughout the year.

The Care Centre has seen a significant increase in funding during the period, mostly in response to the increased need and awareness of foodbanks during the Coronavirus pandemic. This has been through individual donors, within and outside of the church, other churches, businesses, trusts and charities, and key supporters such as Ocado.

Careful management of costs during the year and use of the government's Coronavirus Job Retention Scheme has enabled the church to end the year with a surplus of income over expenditure. This gives confidence for operations to continue despite the ongoing uncertainties of the pandemic, the unknown financial impact once the Coronavirus Job Retention Scheme ends and the longer-term impact on the wider economy.

At the end of the year funds were invested in equipment and support to develop the online capabilities of the church moving forward. It is planned that a strong online presence will continue even once COVID-19 restrictions are lifted and the church is able to function onsite again. The equipment will also assist in the plans for growth and development of further sites and ministries in the future.

The principal sources of funding for the church are member donations and the related gift aid recovery. General fund donation income during the year was £830,490 (excluding grant income of £41,353) compared to £821,554 in 2019. This represents a small increase of 1% year on year which was considered very encouraging considering the uncertainty of the year and the challenges faced. Restricted fund donations were £456,765 compared to £277,915 in 2019; with most of the increase relating to funding for the Care Centre.

Operational expenditure was £823,441 in 2020 compared to £798,044 in 2019. The unrestricted surplus before transfers was £64,555 (£54,626 in 2019) for the year.

The trustees regard the financial position of the church at 31st December 2020 as healthy and able to resource the church's work in 2021 despite the ongoing uncertainties relating to COVID-19.

Reserves policy

Total funds held at the end of the year are £3,801,241 (£3,546,900 in 2019) including restricted funds of £416,991 (£227,205 in 2019).

The church aims to hold sufficient funds which are not designated or restricted (i.e. free reserves) to meet 3 months committed expenditure as determined by the current budget less 5% representing uncommitted expenditure. Reserve levels are monitored regularly and reported by the management committee. In 2020, additional weekly income monitoring and monthly cash flow/reserves monitoring was introduced to allow timely monitoring of finances during such uncertain times. Appropriate action is taken should reserves either drop significantly below or rise above the expected level, other than by prior agreement of the trustees. Reserve levels remained strong throughout the year and as 31st December 2020 free reserves were £375,902 which represents 5.2 months expenditure (2019 - £278,308, 4.1 months).

VINEYARD CHRISTIAN FELLOWSHIP OF ST ALBANS

TRUSTEES' ANNUAL REPORT (CONTINUED)

FOR THE YEAR ENDED 31 DECEMBER 2020

Further details on the nature of restricted funds and designated funds are set out in notes 15 and 16 of the financial statements respectively. £3,008,344 of designated funds can only be realised through the disposal of fixed assets.

This year a new report relating specifically to the finances of the Care Centre has been prepared to enable robust and transparent disclosure of these funds when making grant or trust fund applications and to provide additional information to Care Centre donors. The report does not form part of the audited financial statements but is attached as an Appendix.

Trustee's liabilities

The Articles of Association of the church provide that in certain circumstances the trustees are entitled to be indemnified out of the assets of the church against claims from third parties in respect of certain liabilities arising in connection with the performance of their functions, in accordance with the provision of section 234 of the Companies Act 2006. Indemnity provision of this nature has been in place during the year and remains in place as at the date of this report but has not been utilised by the trustees.

Small company provisions

This report has been prepared in accordance with the provisions of Part 15 of the Companies Act 2006 applicable to companies subject to the small companies' regime.

FUTURE PLANS

Given the disruptive nature of the Coronavirus pandemic, some of our plans for 2020 were not fully realised and their implementation in the future is dependent upon the continuing easing of restrictions. However, COVID-19 has also provided new opportunities, including building out our online presence and developing our pastoral and discipleship approach. Our future plans are set out below.

Services and events

- Creating new services catered for specific groups
- Move towards re-introducing live worship when changes lead to easing of restrictions
- Develop and support new leaders
- Geographical 'pop-up' sites and events e.g. family picnics across different parks
- Continue to develop and expand online content and resources e.g. podcasts
- Set up a structure to support a consistent approach across Village Kids, Ventureland and Youth
- Rebuild volunteer teams and plan for reintroducing children's ministries on-site when appropriate
- Continue to develop special needs provision

Discipleship and pastoral

- Continue to understand and educate regarding race issues and review practices for inclusivity
- Continue to support and promote ministry and outreach groups and their activities such as RISE, men's ministry, etc.
- Continue to support and promote Connect groups to build community and provide discipleship opportunities
- Expand number of Connect groups and increase membership
- Invest in Connect group leadership and resources
- Develop and deliver Equip courses
- Implement and establish one-to-one mentoring programme for young people and team of mentors
- Expand the pastoral care team to meet the rising demand for support needed by individuals
- Continue investment in training and development of the pastoral team
- Continue to offer online and telephone pastoral and prayer support which reaches people who may not engage face-to-face

Community

- Continue to support the Bethesda Orphanages in India housing 150 children and 10 widows
- Continue to support STEP (St Albans & Harpenden Education Programme) and develop plans to strengthen the partnership
- Continue to make the building available to benefit the wider community e.g. NHS Blood & Transfusion team, Herts Welcomes Refugees

VINEYARD CHRISTIAN FELLOWSHIP OF ST ALBANS

TRUSTEES' ANNUAL REPORT (CONTINUED)

FOR THE YEAR ENDED 31 DECEMBER 2020

Care Centre

- Develop and invest in relationships with partner organisations (Mind, St Albans District Council, Family Centres, Family Lawyers, Christians Against Poverty and The Living Room) to enhance the support offered for Care Centre guests
- Partner with St Albans & District Foodbank (part of Trussell Trust network) to supply emergency food provision for the Care Centre
- Recruit a Care Centre Mentoring and Coaching Lead to develop and train a team of coaches and mentors to partner with guests accessing the Bridge programme
- Develop and launch the Bridge membership programme to provide a new social supermarket and a tailored package of support (mentoring, training, advice) for guest members
- Continue to work with Oaklands College to support students with work experience and link guests with opportunities at local colleges
- Continue to run Alpha courses for Care Centre guests

Business support and operations

- Design, plan and cost conversion of unused warehouse to become functional space where Youth and Ventureland have dedicated provision to include an auditorium and various meeting rooms. Flexibility to be built into the design to enable the facilities to be used to host occasional mid-week conferences and community events.
- Continue to develop online processes and documentation to facilitate future expansion in a sustainable way
- Review and resource staff team for emerging operational requirements post COVID-19 restrictions
- Continue to review safeguarding practices and update safeguarding policies
- Continue to monitor guidance and legislation relating to the COVID-19 pandemic and revise processes and risk assessments to account for changes

STRUCTURE, GOVERNANCE AND MANAGEMENT

Governing document

The organisation is a charitable company limited by guarantee, incorporated on 7th October 1997. The company was established under a Memorandum of Association, which established the objects and powers of the charitable company, and it is governed under its Articles of Association. It is also known as St Albans Vineyard, The Vineyard Church, and St Albans Vineyard Church.

Recruitment and appointment of new trustees

Aside from the Senior Pastor who holds a permanent position on the management committee, membership tenure is of a variable term and reviewed informally. New trustees are selected following retirement of a trustee or the decision to increase the number of trustees on the committee. Following discussion by the management committee, members of the church are invited to offer themselves for selection. The management committee seeks to maintain a range of appropriate business skills on the committee as well as to increase the level of diversity to provide gender parity and ethnic representation within its governance strategy.

Prospective candidates meet with one or more of the current committee members for an "interview meeting". The outcomes of these meetings are reviewed by the management committee and following agreement on an appointment further introductions and briefings occur to ensure satisfactory induction of the new trustee. This would include orientation to brief them on their legal obligations under charity and company law, the content of the Memorandum and Articles of Association, the committee and decision-making processes, the business plan, and recent financial performance of the church.

In addition to this, trustee development events are held periodically both to provide opportunity for the congregation to meet the trustees and understand their role and as a recruitment event for potential trustees. From time to time, where a skill area is deemed to be lacking in the management committee, a person may be asked to attend a specific meeting to provide specialist knowledge or experience or to provide support outside of meetings.

Trustees undertake a check with the Disclosure and Barring Service (formerly Criminal Records Bureau) due to their oversight responsibility for the Children & Youth Ministry and other ministries involving vulnerable groups.

Trustees are sometimes referred to as directors when addressing the congregation - a term used since the incorporation of the church as a charitable company in 1997.

VINEYARD CHRISTIAN FELLOWSHIP OF ST ALBANS

TRUSTEES' ANNUAL REPORT (CONTINUED)

FOR THE YEAR ENDED 31 DECEMBER 2020

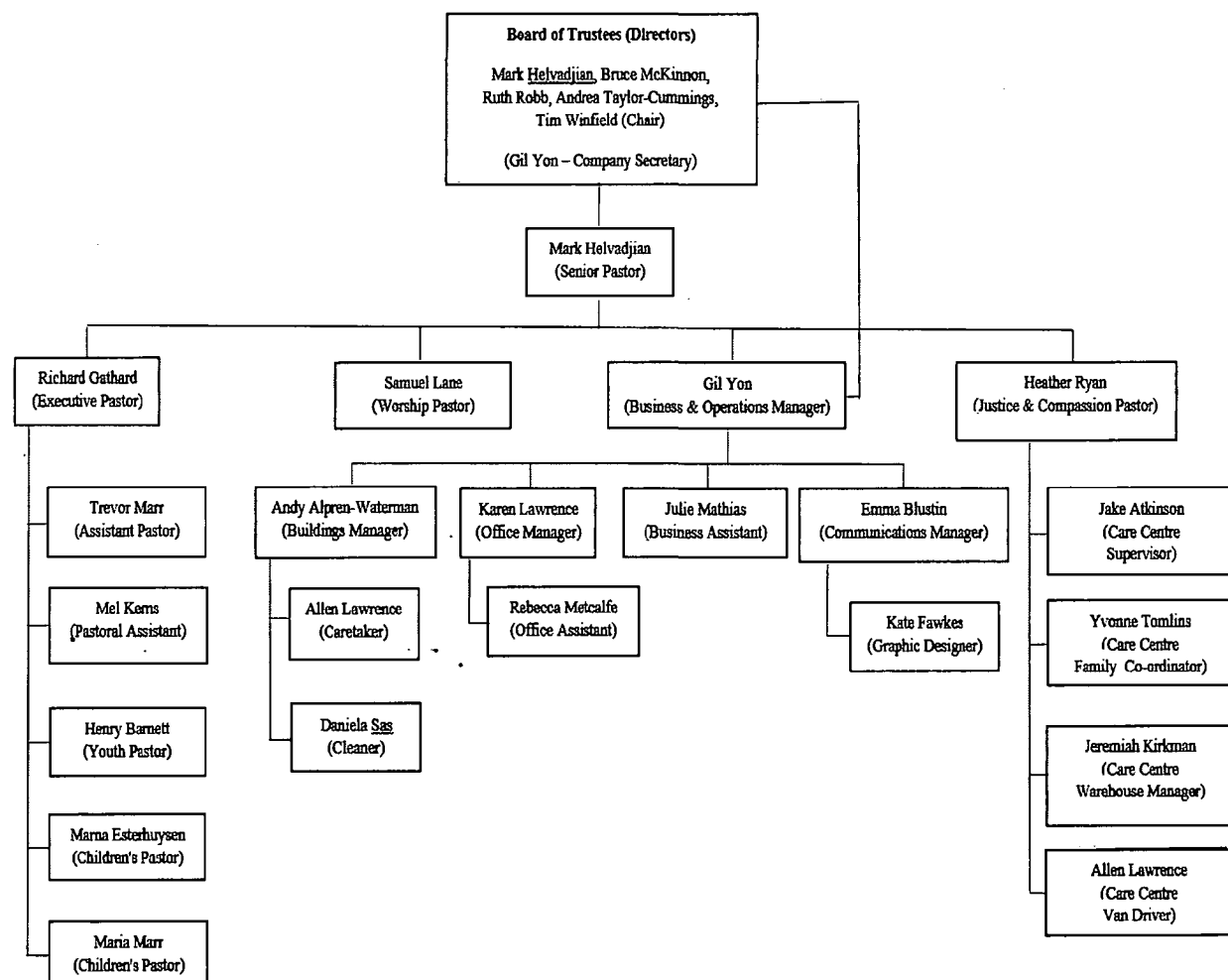
Organisational structure

The management committee administers the church in accordance with Charity Commission guidelines. The management committee meets as required but normally 4-8 times a year. Mark Helvadjian is employed as the Senior Pastor of the church and acts as the Chief Executive Officer to manage the day-to-day operations of the charity. The Senior Pastor is remunerated by the church for his role and is also permitted to be a member of the management committee in accordance with the Memorandum and Articles of Association and by the Charity Commission. Mark Helvadjian's sister-in-law, Melanie Kerns, was appointed as Pastoral Assistant in August 2018, following completion of the discipleship year. The Company Secretary, Gil Yon, who is employed by the church as the Business & Operations Manager, sits on the management committee, but has no voting rights.

To facilitate effective operations during 2020, Mark Helvadjian had delegated authority within terms of delegation approved by the trustees which included financial management, employee management and the general direction of the ministry and vision of the church. The terms of the delegation are regularly reviewed in accordance with the Charity Commission's Charity Governance Code. The Business & Operations Manager oversees the day-to-day financial management of the church and reports to the trustees. The Business & Operations Manager is also responsible for compliance and monitoring of company and charity law issues and working with the auditors to produce the annual audited financial statements.

The principal office of the church is the Registered Office.

Vineyard Christian Fellowship of St Albans
Organisational Structure as at 31st December 2020



VINEYARD CHRISTIAN FELLOWSHIP OF ST ALBANS

TRUSTEES' ANNUAL REPORT (CONTINUED)

FOR THE YEAR ENDED 31 DECEMBER 2020

Affiliations and other organisations with which the church is associated

The church is affiliated to the organisation Vineyard Churches UK & Ireland and use of the "Vineyard" name is vested by them to the Senior Pastor. The church is also a member of the Evangelical Alliance, and an official observer of the St Albans Churches Together network. The church also supports a few other charitable organisations both in the UK and abroad. In particular, the church regularly supports Bethesda Orphanage in India and more locally the STEP project (St Albans & Harpenden Education Project).

Risk management

During the year, at their meetings, the trustees have considered the major risks to which the church is exposed, have reviewed those risks and established a risk register and procedures to manage those risks. This ongoing review of the major risks identifies significant risks and assesses their probability and likely level of impact and any appropriate mitigating action required. Particular attention is paid to those risks having the potential to have greatest impact on the church in the areas of finance, reputation, human resources, safeguarding and child protection, and health and safety. One of the greatest risks to the church is a reduction in giving by the congregation. To mitigate this risk such income is monitored on a month-by-month basis and expenditure adjusted through strict budgetary control. Also due to the small staff group, the loss of key personnel is another major risk and to mitigate this, the church is developing a degree of overlapping of duties, particularly of pastors and utilises as a resource the skills of individuals from within the congregation either for short term needs or as candidates to recruit into vacancies.

During the year, particular attention was given to the risks raised by the Coronavirus pandemic. Weekly, and then fortnightly, video calls with the trustees were used to review the constantly changing circumstances and impact on risks, and additional financial and staff management was put in place in response to this. Several scenarios were also documented to enable action to be taken in a timely manner if required. The trustees continue to meet on a regular basis to respond to the Coronavirus situation.

The trustees are responsible for ensuring that the financial statements are prepared on a "going concern" basis. Going concern means that the trustees have a reasonable expectation that the company can continue to operate for the foreseeable future which in turn means at least 12 months from the date of approving the financial statements.

The effects of COVID-19 and the measures taken by the UK Government continue to evolve and hence whilst the trustees have taken action to deal with the perceived risk, it is not possible to fully quantify the full impact that COVID-19 will have on the church in the longer term. The risk mitigation activities taken have enabled the church to be financially viable within current levels of income whilst also maintaining its financial reserves status. Although the government has now set out a roadmap to bring the country out of lockdown and the ongoing vaccination programme is expected to see virus levels reduce to a more acceptable level, the resulting financial and economic uncertainty could still have a negative impact on the church within the foreseeable future and the extent of that remains highly uncertain and cannot be quantified. The trustees continue to monitor, assess and act in response to the changing environment to position the church to ensure its future.

Thanks to volunteers

The trustees would particularly like to thank the large number of volunteers, church members and others, referred to in the report above, who give their time and energy to the activities of the church throughout the year and without which the church would be unable to carry out its work in the community and beyond.

VINEYARD CHRISTIAN FELLOWSHIP OF ST ALBANS

TRUSTEES' ANNUAL REPORT (CONTINUED) FOR THE YEAR ENDED 31 DECEMBER 2020

REFERENCE AND ADMINISTRATIVE DETAILS

Trustees Mr Mark Helvadjian
Mr Bruce McKinnon
Mrs Ruth Robb
Dr Andrea Taylor-Cummings
Mr Tim Winfield
Dr Mark Bevis (resigned 27 February 2020)

Company Secretary Mrs Gil Yon

Company No. 3445897

Charity No. 1066846

Registered Office 7 Brick Knoll Park
Ashley Road
St Albans
Hertfordshire
AL1 5UG

Auditors Cansdales Audit LLP
Bourbon Court
Nightingales Corner
Little Chalfont
Buckinghamshire
HP7 9QS

Bankers Reliance Bank Limited
Faith House
23-24 Lovat Lane
London
EC3R 8EB

Barclays Bank Plc
PO Box 104
St Albans
Hertfordshire
AL1 3AN

Allied Irish Bank (GB)
Retail Business
PO Box 52496
London
NW3 9ED

VINEYARD CHRISTIAN FELLOWSHIP OF ST ALBANS

TRUSTEES' ANNUAL REPORT (CONTINUED)

FOR THE YEAR ENDED 31 DECEMBER 2020

STATEMENT OF TRUSTEES' RESPONSIBILITIES

The trustees, who are also the directors of Vineyard Christian Fellowship of St Albans for the purpose of company law, are responsible for preparing the Trustees' Annual Report and the financial statements in accordance with applicable law and United Kingdom Accounting Standards (United Kingdom Generally Accepted Accounting Practice).

Company Law requires the trustees to prepare financial statements for each financial year which give a true and fair view of the state of affairs of the charitable company and of the incoming resources and application of resources, including the income and expenditure, of the charitable company for that year.

In preparing these financial statements, the trustees are required to:

- select suitable accounting policies and then apply them consistently;
- observe the methods and principles in the Charities SORP;
- make judgements and estimates that are reasonable and prudent;
- state whether applicable UK Accounting Standards have been followed, subject to any material departures disclosed and explained in the financial statements; and
- prepare the financial statements on the going concern basis unless it is inappropriate to presume that the charitable company will continue in operation.

The trustees are responsible for keeping adequate accounting records that disclose with reasonable accuracy at any time the financial position of the charitable company and enable them to ensure that the financial statements comply with the Companies Act 2006. They are also responsible for safeguarding the assets of the charitable company and hence for taking reasonable steps for the prevention and detection of fraud and other irregularities.

In so far as the trustees are aware:

- there is no relevant audit information of which the charitable company's auditors are unaware; and
- the Trustees have taken all steps that they ought to have taken to make themselves aware of any relevant audit information and to establish that the auditors are aware of that information.

The trustees are responsible for the maintenance and integrity of the corporate and financial information included on the charitable company's website. Legislation in the United Kingdom governing the preparation and dissemination of financial statements may differ from legislation in other jurisdictions.

Auditor

Cansdales Audit LLP are deemed to be reappointed under section 487(2) of the Companies Act 2006.

The trustees' annual report was approved by the Board of Trustees on 15 September 2021 and signed on behalf by :



Mr. Tim Winfield

Trustee

Dated: 15 September 2021

VINEYARD CHRISTIAN FELLOWSHIP OF ST ALBANS

INDEPENDENT AUDITOR'S REPORT

TO THE MEMBERS OF VINEYARD CHRISTIAN FELLOWSHIP OF ST ALBANS

Opinion

We have audited the financial statements of Vineyard Christian Fellowship of St Albans (the 'Charity') for the year ended 31 December 2020 which comprise the statement of financial activities, the statement of financial position, the statement of cash flows and the notes to the financial statements, including a summary of significant accounting policies. The financial reporting framework that has been applied in their preparation is applicable law and United Kingdom Accounting Standards, including Financial Reporting Standard 102 *The Financial Reporting Standard applicable in the UK and Republic of Ireland* (United Kingdom Generally Accepted Accounting Practice).

In our opinion, the financial statements:

- give a true and fair view of the state of the charitable company's affairs as at 31 December 2020 and of its incoming resources and application of resources, for the year then ended;
- have been properly prepared in accordance with United Kingdom Generally Accepted Accounting Practice; and
- have been prepared in accordance with the requirements of the Companies Act 2006.

Basis for opinion

We conducted our audit in accordance with International Standards on Auditing (UK) (ISAs (UK)) and applicable law. Our responsibilities under those standards are further described in the Auditor's responsibilities for the audit of the financial statements section of our report. We are independent of the Charity in accordance with the ethical requirements that are relevant to our audit of the financial statements in the UK, including the FRC's Ethical Standard, and we have fulfilled our other ethical responsibilities in accordance with these requirements. We believe that the audit evidence we have obtained is sufficient and appropriate to provide a basis for our opinion.

Conclusions relating to going concern

We have nothing to report in respect of the following matters in relation to which the ISAs (UK) require us to report to you where:

- the trustees' annual use of the going concern basis of accounting in the preparation of the financial statements is not appropriate; or
- the trustees have not disclosed in the financial statements any identified material uncertainties that may cast significant doubt about the Charity's ability to continue to adopt the going concern basis of accounting for a period of at least twelve months from the date when the financial statements are authorised for issue.

Other information

The other information comprises the information included in the annual report other than the financial statements and our auditor's report thereon. The trustees are responsible for the other information contained within the annual report. Our opinion on the financial statements does not cover the other information and, except to the extent otherwise explicitly stated in our report, we do not express any form of assurance conclusion thereon. Our responsibility is to read the other information and, in doing so, consider whether the other information is materially inconsistent with the financial statements or our knowledge obtained in the course of the audit, or otherwise appears to be materially misstated. If we identify such material inconsistencies or apparent material misstatements, we are required to determine whether this gives rise to a material misstatement in the financial statements themselves. If, based on the work we have performed, we conclude that there is a material misstatement of this other information, we are required to report that fact.

We have nothing to report in this regard.

Opinions on other matters prescribed by the Companies Act 2006

In our opinion, based on the work undertaken in the course of our audit:

- the information given in the trustees' annual report, which includes the directors' report prepared for the purposes of company law, for the financial year for which the financial statements are prepared is consistent with the financial statements; and
- the directors' report included within the trustees' annual report has been prepared in accordance with applicable legal requirements.

VINEYARD CHRISTIAN FELLOWSHIP OF ST ALBANS

INDEPENDENT AUDITOR'S REPORT (CONTINUED)

TO THE MEMBERS OF VINEYARD CHRISTIAN FELLOWSHIP OF ST ALBANS

Matters on which we are required to report by exception

In the light of the knowledge and understanding of the Charity and its environment obtained in the course of the audit, we have not identified material misstatements in the directors' report included within the trustees' annual report.

We have nothing to report in respect of the following matters in relation to which the Companies Act 2006 requires us to report to you if, in our opinion:

- adequate accounting records have not been kept, or returns adequate for our audit have not been received from branches not visited by us; or
- the financial statements are not in agreement with the accounting records and returns; or
- certain disclosures of trustees' remuneration specified by law are not made; or
- we have not received all the information and explanations we require for our audit; or
- the trustees were not entitled to prepare the financial statements in accordance with the small companies regime and take advantage of the small companies' exemptions in preparing the trustees' annual report and from the requirement to prepare a strategic report.

Responsibilities of trustees

As explained more fully in the statement of trustees' annual responsibilities, the trustees, who are also the directors of the Charity for the purpose of company law, are responsible for the preparation of the financial statements and for being satisfied that they give a true and fair view, and for such internal control as the trustees determine is necessary to enable the preparation of financial statements that are free from material misstatement, whether due to fraud or error. In preparing the financial statements, the trustees are responsible for assessing the Charity's ability to continue as a going concern, disclosing, as applicable, matters related to going concern and using the going concern basis of accounting unless the trustees either intend to liquidate the charitable company or to cease operations, or have no realistic alternative but to do so.

VINEYARD CHRISTIAN FELLOWSHIP OF ST ALBANS

INDEPENDENT AUDITOR'S REPORT (CONTINUED)

TO THE MEMBERS OF VINEYARD CHRISTIAN FELLOWSHIP OF ST ALBANS

Auditor's responsibilities for the audit of the financial statements

Our objectives are to obtain reasonable assurance about whether the financial statements as a whole are free from material misstatement, whether due to fraud or error, and to issue an auditor's report that includes our opinion. Reasonable assurance is a high level of assurance but is not a guarantee that an audit conducted in accordance with ISAs (UK) will always detect a material misstatement when it exists. Misstatements can arise from fraud or error and are considered material if, individually or in the aggregate, they could reasonably be expected to influence the economic decisions of users taken on the basis of these financial statements.

As part of an audit in accordance with ISAs (UK), we exercise professional judgment and maintain professional scepticism throughout the audit. We also:

- Identify and assess the risks of material misstatement of the financial statements, whether due to fraud or error, design and perform audit procedures responsive to those risks, and obtain audit evidence that is sufficient and appropriate to provide a basis for our opinion. The risk of not detecting a material misstatement resulting from fraud is higher than for one resulting from error, as fraud may involve collusion, forgery, intentional omissions, misrepresentations, or the override of internal control.
- Obtain an understanding of internal control relevant to the audit in order to design audit procedures that are appropriate in the circumstances, but not for the purpose of expressing an opinion on the effectiveness of the charitable company's internal control.
- Evaluate the appropriateness of accounting policies used and the reasonableness of accounting estimates and related disclosures made by the trustees.
- Conclude on the appropriateness of the trustees' use of the going concern basis of accounting and, based on the audit evidence obtained, whether a material uncertainty exists related to events or conditions that may cast significant doubt on the charitable company's ability to continue as a going concern. If we conclude that a material uncertainty exists, we are required to draw attention in our auditor's report to the related disclosures in the financial statements or, if such disclosures are inadequate, to modify our opinion. Our conclusions are based on the audit evidence obtained up to the date of our auditor's report. However, future events or conditions may cause the charitable company to cease to continue as a going concern.
- Evaluate the overall presentation, structure and content of the financial statements, including the disclosures, and whether the financial statements represent the underlying transactions and events in a manner that achieves fair presentation.

We communicate with those charged with governance regarding, among other matters, the planned-scope and timing of the audit and significant audit findings, including any significant deficiencies in internal control that we identify during our audit.

Use of our report

This report is made solely to the charitable company's trustees, as a body, in accordance with Chapter 3 of Part 16 of the Companies Act 2006. Our audit work has been undertaken so that we might state to the charitable company's trustees those matters we are required to state to them in an auditor's report and for no other purpose. To the fullest extent permitted by law, we do not accept or assume responsibility to anyone other than the charitable company and the charitable company's trustees as a body, for our audit work, for this report, or for the opinions we have formed.


Mr James Foskett (Senior Statutory Auditor)
for and on behalf of Cansdales Audit LLP

22 September 2021

Bourbon Court
Nightingales Corner
Little Chalfont
Bucks, HP7 9QS

VINEYARD CHRISTIAN FELLOWSHIP OF ST ALBANS

STATEMENT OF FINANCIAL ACTIVITIES INCLUDING INCOME AND EXPENDITURE ACCOUNT

FOR THE YEAR ENDED 31 DECEMBER 2020

	Notes	Unrestricted funds £	Restricted funds £	Total 2020 £	Unrestricted funds £	Restricted funds £	Total 2019 £
Income from:							
Donations and legacies	2	871,843	456,765	1,328,608	821,554	277,915	1,099,469
Charitable activities		11,979	133	12,112	27,265	471	27,736
Other trading activities	3	3,197	-	3,197	2,061	109	2,170
Investments	4	977	-	977	1,790	-	1,790
Total income		887,996	456,898	1,344,894	852,670	278,495	1,131,165
Expenditure on:							
Charitable activities	5	823,441	267,112	1,090,553	798,044	327,461	1,125,505
Net income before transfers		64,555	189,786	254,341	54,626	(48,966)	5,660
Gross transfers between funds		-	-	-	102,200	(102,200)	-
Net income for the year/ Net movement in funds		64,555	189,786	254,341	156,826	(151,166)	5,660
Total funds brought forward		3,319,695	227,205	3,546,900	3,162,869	378,371	3,541,240
Total funds carried forward		3,384,250	416,991	3,801,241	3,319,695	227,205	3,546,900

The statement of financial activities includes all gains and losses recognised in the year.
All income and expenditure derive from continuing activities.

The statement of financial activities also complies with the requirements for an income and expenditure account under the Companies Act 2006.

VINEYARD CHRISTIAN FELLOWSHIP OF ST ALBANS

STATEMENT OF FINANCIAL POSITION

AS AT 31 DECEMBER 2020

	Notes	2020 £	£	2019 £	£
Fixed assets					
Tangible assets	8		3,858,222		3,905,316
Current assets					
Stocks	9	3,931		3,750	
Debtors	10	27,838		18,798	
Cash at bank and in hand		790,129		517,278	
		821,898		539,826	
Creditors: amounts falling due within one year	11	(62,971)		(79,050)	
Net current assets			758,927		460,776
Total assets less current liabilities			4,617,149		4,366,092
Creditors: amounts falling due after more than one year	12		(815,908)		(819,192)
Net assets			3,801,241		3,546,900
Income funds					
Restricted funds	15		416,991		227,205
<u>Unrestricted funds</u>					
Designated funds	16	3,008,344		3,041,383	
General unrestricted funds		375,902		278,308	
Members' guarantee reserve		4		4	
			3,384,250		3,319,695
			3,801,241		3,546,900

These financial statements have been prepared in accordance with the provisions applicable to companies subject to the small companies' regime.

The financial statements were approved by the Trustees on 15 September 2021



Mr. Tim Winfield
Trustee

Company Registration No. 3445897

VINEYARD CHRISTIAN FELLOWSHIP OF ST ALBANS

STATEMENT OF CASH FLOWS

FOR THE YEAR ENDED 31 DECEMBER 2020

	Notes	2020 £	£	2019 £	£ Restated
Cash flows from operating activities					
Net cashflow from operations	22		356,654		140,561
Investing activities					
Purchase of tangible fixed assets		(32,549)		(102,200)	
Interest received		977		1,790	
Net cash used in investing activities			(31,572)		(100,410)
Financing activities					
Repayment of borrowings		(894,055)		(44,116)	
Proceeds of new bank loans		867,250		-	
Interest on financing		(25,426)		(27,839)	
Net cash used in financing activities			(52,231)		(71,955)
Net increase/(decrease) in cash and cash equivalents			272,851		(31,804)
Cash and cash equivalents at beginning of year			517,278		549,082
Cash and cash equivalents at end of year			<u>790,129</u>		<u>517,278</u>

VINEYARD CHRISTIAN FELLOWSHIP OF ST ALBANS

NOTES TO THE FINANCIAL STATEMENTS

FOR THE YEAR ENDED 31 DECEMBER 2020

1 Accounting policies

Company information

Vineyard Christian Fellowship of St Albans is a private charitable company limited by guarantee, incorporated in England & Wales. The registered office is 7 Brick Knoll Park, Ashley Road, St Albans, Hertfordshire, AL1 5UG.

1.1 Accounting convention

The financial statements have been prepared in accordance with the Charity's memorandum and articles of association, the Companies Act 2006 and "Accounting and Reporting by Charities: Statement of Recommended Practice applicable to charities preparing their accounts in accordance with the Financial Reporting Standard applicable in the UK and Republic of Ireland (FRS 102)" (as amended for accounting periods commencing from 1 January 2019). The Charity is a Public Benefit Entity as defined by FRS 102.

Monetary amounts in these financial statements are rounded to the nearest £ sterling, the functional currency of the church.

The financial statements have been prepared on the historical cost convention, modified when required to include the revaluation of freehold properties and to include investment properties and certain financial instruments at fair value. The principal accounting policies adopted are set out below.

1.2 Going concern

At the time of approving the financial statements, the trustees have a reasonable expectation that the church has adequate resources to continue in operational existence for the foreseeable future. Thus the trustees continue to adopt the going concern basis of accounting in preparing the financial statements.

1.3 Income

Income is recognised when the church is legally entitled to it after any performance conditions have been met, the amounts can be measured reliably, and it is more likely than not that income will be received.

Cash donations are recognised on receipt. Other donations are recognised once the church has been notified of the donation, unless performance conditions require deferral of the amount. Income tax recoverable in relation to donations received under Gift Aid or deeds of covenant is recognised at the time of the donation.

Legacies are recognised on receipt or otherwise if the church has been notified of an impending distribution, the amount is known, and receipt is more likely than not. Volunteers make a significant contribution to the activities of the charitable company in every area of its work. In the absence of a reliable measurement basis however this contribution is not included as income in the financial statements. Material donations of goods are recognised only on their distribution and are valued at estimated retail value.

Income from charitable activities primarily relates to book sales and amounts received in respect of organised activities.

Income from other trading activities primarily relates to income received from use of the building by third parties.

Investment income relates to interest earned on cash balances.

1.4 Expenditure

Expenditure is accounted for on an accruals basis, inclusive of VAT, which cannot be recovered. Certain expenditure is directly attributable to specific activities or projects and has been allocated accordingly. Shared costs which contribute to more than one activity are apportioned between those activities. Principal estimation techniques utilised to apportion costs include the proportion of staff time and premises utilised for each activity.

VINEYARD CHRISTIAN FELLOWSHIP OF ST ALBANS

NOTES TO THE FINANCIAL STATEMENTS (CONTINUED)

FOR THE YEAR ENDED 31 DECEMBER 2020

1 Accounting policies

(Continued)

1.5 Pension costs

The charity operates a defined contribution plan for the benefit of its employees. Contributions are expensed as they become payable.

1.6 Tangible fixed assets

Tangible fixed assets are initially measured at cost and subsequently measured at cost or valuation, net of depreciation and any impairment losses.

Depreciation is recognised so as to write off the cost or valuation of assets less their residual values over their useful lives on the following bases:

Freehold buildings	50 years on cost
Plant and machinery	25% on cost
Fixtures, fittings & equipment	25% on cost

The gain or loss arising on the disposal of an asset is determined as the difference between the sale proceeds and the carrying value of the asset, and is recognised in net income/(expenditure) for the year.

Items of equipment are capitalised where the unit cost of the purchase exceeds £5,000.

1.7 Stocks

Purchased stocks are stated at the lower of cost and estimated selling price less costs to sell.

Donated goods are valued only when distributed and therefore stocks of donated goods are not shown as having any value for accounting purposes.

1.8 Debtors

Trade and other debtors are recorded at cost, less any impairment.

1.9 Cash and cash equivalents

Cash and cash equivalents include cash in hand, deposits held at call with banks, other short-term liquid investments with original maturities of three months or less, and bank overdrafts. Bank overdrafts are shown within loans in current liabilities.

1.10 Creditors

Trade and other current creditors are stated at cost.

Non-current creditors are recorded at fair value on initial recognition and subsequently at amortised cost.

1.11 Charitable funds

Unrestricted funds are available for use at the discretion of the trustees in furtherance of their charitable objectives.

Unrestricted designated funds are funds set aside out of unrestricted funds by the trustees for specific purposes.

Restricted funds are subject to specific conditions by donors as to how they may be used. The purposes and uses of the restricted funds are set out in the notes to the financial statements.

Further explanation of nature and purpose of each designated and restricted fund is included in notes to the financial statements.

VINEYARD CHRISTIAN FELLOWSHIP OF ST ALBANS

NOTES TO THE FINANCIAL STATEMENTS (CONTINUED)

FOR THE YEAR ENDED 31 DECEMBER 2020

1 Accounting policies

(Continued)

1.12 Employee benefits

The cost of any unused holiday entitlement is recognised in the period in which the employee's services are received.

Termination benefits are recognised immediately as an expense when the church is demonstrably committed to terminate the employment of an employee or to provide termination benefits.

1.13 Leases

Rentals payable under operating leases, including any lease incentives received, are charged as an expense on a straight line basis over the term of the relevant lease.

2 Donations and legacies

	Unrestricted funds	Restricted funds	Total 2020	Total 2019
	£	£	£	£
Donations under Gift Aid	497,119	59,653	556,772	457,666
Grants	41,353	-	41,353	-
Gift Aid recoverable	124,511	15,173	139,684	114,416
Other donations	208,860	381,939	590,799	527,387
	<u>871,843</u>	<u>456,765</u>	<u>1,328,608</u>	<u>1,099,469</u>

Included in other donations above is £224,819 (2019: £194,530) relating to items donated for the FEED program. This has been included to meet the requirements of FRS102.

Grants, included above, represents amount received for Coronavirus Job Retention Scheme.

3 Other trading activities

	Unrestricted funds	Restricted funds	Total	Unrestricted funds	Restricted funds	Total
	2020 £	2020 £	2020 £	2019 £	2019 £	2019 £
Income from building hire	<u>3,197</u>	<u>-</u>	<u>3,197</u>	<u>2,061</u>	<u>109</u>	<u>2,170</u>

VINEYARD CHRISTIAN FELLOWSHIP OF ST ALBANS

NOTES TO THE FINANCIAL STATEMENTS (CONTINUED)

FOR THE YEAR ENDED 31 DECEMBER 2020

4 Investments

	Unrestricted funds	Unrestricted funds
	2020	2019
	£	£
Interest receivable	977	1,790
	<u> </u>	<u> </u>

VINEYARD CHRISTIAN FELLOWSHIP OF ST ALBANS

NOTES TO THE FINANCIAL STATEMENTS (CONTINUED) FOR THE YEAR ENDED 31 DECEMBER 2020

5 Expenditure on charitable activities

	Bookshop	Services & Events	Discipleship & Pastoral	Community Care Centre		Total 2020	Total 2019
	£	£	£	£	£	£	£
Depreciation and impairment	-	63,751	13,859	4,620	10,163	92,393	87,773
Goods for re-sale	3,683	-	-	-	-	3,683	8,108
Sunday Services	-	19,607	-	-	-	19,607	26,682
Worship	-	2,587	-	-	-	2,587	3,143
Evangelism	-	1,172	-	-	219	1,391	6,254
Training and education	-	-	9,170	-	-	9,170	14,495
Pastoring	-	-	1,163	-	-	1,163	6,976
Mission	-	-	-	30,498	-	30,498	28,198
Community committed	-	-	-	42,610	-	42,610	32,111
Community discretionary	-	-	-	10,894	235,000	245,894	221,212
Wages and salaries	649	224,616	178,269	29,278	56,556	489,368	447,782
Other staff costs	-	13,221	7,211	1,202	2,404	24,038	27,450
Premises	-	35,585	7,736	2,579	5,672	51,572	83,272
Office	-	18,871	10,293	1,716	3,430	34,310	37,115
Public relations	-	6,083	2,808	187	281	9,359	12,182
Professional fees	-	4,117	2,245	374	748	7,484	8,298
Consultancy	-	-	-	-	-	-	11,700
Interest payable	-	17,543	5,341	2,542	-	25,426	26,100
	<u>4,332</u>	<u>407,153</u>	<u>238,095</u>	<u>126,500</u>	<u>314,473</u>	<u>1,090,553</u>	<u>1,088,851</u>
Analysis by fund							
Unrestricted funds	4,332	407,020	238,095	124,000	49,994	823,441	798,044
Restricted funds	-	133	-	2,500	264,479	267,112	327,461
	<u>4,332</u>	<u>407,153</u>	<u>238,095</u>	<u>126,500</u>	<u>314,473</u>	<u>1,090,553</u>	<u>1,125,505</u>

VINEYARD CHRISTIAN FELLOWSHIP OF ST ALBANS

NOTES TO THE FINANCIAL STATEMENTS (CONTINUED) FOR THE YEAR ENDED 31 DECEMBER 2020

5 Expenditure on charitable activities

(Continued)

Support costs included above were as follows:

	Services & Events £	Discipleship & Pastoral £	Community £	Care Centre £	Total 2020 £	Total 2019 £
Governance	4,199	2,290	382	763	7,634	8,872
Finance	1,453	793	132	264	2,642	2,381
Information technology	9,200	5,018	836	1,673	16,727	16,247
Other	8,439	4,603	767	1,534	15,343	17,315
	<u>23,291</u>	<u>12,704</u>	<u>2,117</u>	<u>4,234</u>	<u>42,346</u>	<u>44,815</u>

The auditor's remuneration included in professional fees is £7,150 (2019: £6,810). This includes £3,190 (2019: £2,970) for non audit work.

No costs were incurred during the year on fundraising (2019: Nil).

VINEYARD CHRISTIAN FELLOWSHIP OF ST ALBANS

NOTES TO THE FINANCIAL STATEMENTS (CONTINUED)

FOR THE YEAR ENDED 31 DECEMBER 2020

6 Employees

The average monthly number of employees during the year was:

	2020	2019
Direct charitable work	8	7
Management and administration	7	7
	<u>15</u>	<u>14</u>

	2020 £	2019 £
Wages and salaries	438,248	400,357
Social security costs	34,550	33,023
Pension costs	16,570	14,402
	<u>489,368</u>	<u>447,782</u>

No employee earned more than £60,000 per annum, except Mr M Helvadjian as disclosed in Note 7 below.

The church's Memorandum of Association permits the remuneration of Mr M Helvadjian, who is a trustee. No other trustee received any remuneration.

7 Trustees

Remuneration was paid to trustees who are employed to carry out specific operational roles for the company and to key management personnel as follows:

	Salary	Pension	2020 £	2019 £
Mr M Helvadjian	71,400	2,856	74,256	72,150
Other key management	31,824	1,273	33,097	32,376
	<u>103,224</u>	<u>4,129</u>	<u>109,373</u>	<u>106,545</u>

Trustees' expenses

A total of £1,379 was paid to a trustee and one of the key management during the year (2019:Nil), relating primarily to reimbursement of administrative costs.

VINEYARD CHRISTIAN FELLOWSHIP OF ST ALBANS

NOTES TO THE FINANCIAL STATEMENTS (CONTINUED)

FOR THE YEAR ENDED 31 DECEMBER 2020

8 Tangible fixed assets

	Freehold buildings	Plant and machinery	Fixtures, fittings & equipment	Total
	£	£	£	£
Cost				
At 1 January 2020	4,560,972	92,546	135,076	4,788,594
Additions	12,750	32,549	-	45,299
At 31 December 2020	4,573,722	125,095	135,076	4,833,893
Depreciation and impairment				
At 1 January 2020	660,647	89,777	132,854	883,278
Depreciation charged in the year	79,462	10,709	2,222	92,393
At 31 December 2020	740,109	100,486	135,076	975,671
Carrying amount				
At 31 December 2020	3,833,613	24,609	-	3,858,222
At 31 December 2019	3,900,325	2,769	2,222	3,905,316

9 Stocks

	2020	2019
	£	£
Books	3,931	3,750

10 Debtors

	2020	2019
	£	£
Amounts falling due within one year:		
Gift aid recoverable	13,285	9,871
Other debtors	-	28
Prepayments and accrued income	14,553	8,899
	27,838	18,798

11 Creditors: amounts falling due within one year

	2020	2019
	£	£
Loans	33,970	44,741
Other taxation and social security	9,477	8,433
Other Creditor	572	2,354
Accruals and deferred income	18,952	23,522
	62,971	79,050

VINEYARD CHRISTIAN FELLOWSHIP OF ST ALBANS

NOTES TO THE FINANCIAL STATEMENTS (CONTINUED)

FOR THE YEAR ENDED 31 DECEMBER 2020

12 Creditors: amounts falling due after more than one year

	Notes	2020 £	2019 £
Loans		815,908	819,192

The loan is secured on the property known as 6 & 7 Brick Knoll Park, Ashley Road, St. Albans, Hertfordshire, AL1 5UG. The loan was renewed in January 2020 and was agreed at a value of £880,000 repayable over 20 years. Subject to conditions, interest on the loan is charged at 2.75% (2019: 2.65%). Capital repayments are being made monthly and full repayment of the loan is expected by January 2040.

13 Operating lease commitments

At the reporting end date the Charity had outstanding commitments for future minimum lease payments under non-cancellable operating leases, which fall due as follows:

	2020 £	2019 £
Within one year	3,889	3,889
Between two and five years	2,930	6,819
	6,819	10,708

14 Analysis of net assets between funds

	Restricted Funds £	Designated Funds £	Unrestricted Funds £	Members' Guarantee Reserve £	Total £
Fund balances at 31 December 2020 are represented by:					
Tangible assets	-	3,858,222	-	-	3,858,222
Current assets/(liabilities)	416,991	(33,970)	375,902	4	758,927
Non-current liabilities	-	(815,908)	-	-	(815,908)
	416,991	3,008,344	375,902	4	3,801,241

VINEYARD CHRISTIAN FELLOWSHIP OF ST ALBANS

NOTES TO THE FINANCIAL STATEMENTS (CONTINUED)

FOR THE YEAR ENDED 31 DECEMBER 2020

15 Restricted funds

The income funds of the charity include restricted funds comprising the following unexpended balances of donations and grants held on trust for specific purposes:

	Balance at 1 January 2020	Movement in funds			Balance at 31 December 2020
	£	Income £	Expenditure £	Transfers £	£
Care Centre	44,934	441,581	(264,479)	-	222,036
Growing family	148,636	12,684	-	33,635	194,955
Transitions	33,635	2,633	(2,633)	(33,635)	-
	<u>227,205</u>	<u>456,898</u>	<u>(267,112)</u>	<u>-</u>	<u>416,991</u>

The Care Centre fund relates to income received by the charitable company for the ongoing resourcing and work of the Care Centre foodbank.

The Growing family restricted fund relates to income received by the charitable company for the purchase and development of an industrial warehouse into a church facility. Transfers are to correctly reflect amounts expended on items of a capital nature.

The Transitions restricted fund relates to income received which is later passed on to its intended third party e.g. mission trips, conference tickets etc.

16 Designated funds

The income funds of the charity include the following designated funds which have been set aside out of unrestricted funds by the trustees for specific purposes:

	Balance at 1 January 2020	Transfers	Balance at 31 December 2020
	£	£	£
Building fund	3,036,392	(52,657)	2,983,735
Fixed asset fund	4,991	19,618	24,609
	<u>3,041,383</u>	<u>(33,039)</u>	<u>3,008,344</u>

The building fund represents the net book value of the building less the outstanding mortgage loan secured on that property. Transfers are to correctly reflect the value after adjusting for additions, depreciation and repayments on loans.

The fixed asset fund represents the net book value of the other fixed assets owned by the charity. Transfers are to correctly reflect the year end value after adjusting for additions, disposals and depreciation.

VINEYARD CHRISTIAN FELLOWSHIP OF ST ALBANS

NOTES TO THE FINANCIAL STATEMENTS (CONTINUED) FOR THE YEAR ENDED 31 DECEMBER 2020

17 Capital commitments

There were no capital commitments at 31 December 2020 (2019: £nil).

18 Pensions

The charitable company offers a defined contribution pension scheme to its employees and makes contributions to this pension scheme on behalf of its employees. The scheme is open to all qualifying employees and enrolment in the scheme is optional. The contributions payable for the scheme for the period are charged in the income and expenditure account. There was no balance outstanding at the year end (2019: £nil).

19 Contingencies

There were no contingent liabilities at 31 December 2020 (2019: £nil).

20 Ultimate controlling party

There is no ultimate controlling party.

21 Related party transactions

There were no related party transactions during the year requiring disclosure. (2019 - no transactions requiring disclosure).

22 Net cashflow from operations	2020 £	2019 £
Net income for the year	254,341	5,660
Adjustments for:		
Investment income	(977)	(1,790)
Depreciation and impairment of tangible fixed assets	92,393	87,773
Interest on financing	25,426	27,839
Movements in working capital:		
(Increase)/decrease in stocks	(181)	617
(Increase)/decrease in debtors	(9,040)	10,236
(Decrease)/increase in creditors	(5,308)	10,226
Net cashflow from operations	356,654	140,561

VINEYARD CHRISTIAN FELLOWSHIP OF ST ALBANS

NOTES TO THE FINANCIAL STATEMENTS (CONTINUED)

FOR THE YEAR ENDED 31 DECEMBER 2020

23 Analysis of changes in net (debt)/funds

	At 1 January 2020 £	Cash flows £	Other non-cash changes £	At 31 December 2020 £
Cash at bank and in hand	517,278	272,851	-	790,129
Borrowings due within one year	(44,741)	10,771	-	(33,970)
Borrowings due after more than one year	(819,192)	16,034	(12,750)	(815,908)
	<u>(346,655)</u>	<u>299,656</u>	<u>(12,750)</u>	<u>(59,749)</u>

Non-cash changes relate to loan arrangement fees, which were capitalised as an addition to fixed assets.

24 Event during the reporting period

During the year 2020, the Coronavirus (COVID-19) has emerged globally resulting in a significant impact on businesses worldwide. As a result, some business operations have been restricted, however the charitable company continues to operate using alternative methods and remote working.

The Trustees' are continuing to monitor, assess and act with reference to the current changing environment in order to position the charitable company to ensure its future success.

VINEYARD CHRISTIAN FELLOWSHIP OF ST ALBANS

APPENDIX TO ACCOUNTS

FINANCIAL ACTIVITIES OF THE CARE CENTRE FUND

FOR THE YEAR ENDED 31 DECEMBER 2020

	2020 £	2019 £
INCOME AND ENDOWMENTS		
Donations and legacies		
Value of donated FEED items	224,819	194,530
Donations under Gift Aid	50,371	10,770
Gift Aid recoverable	12,593	2,692
Other donations and grants		
Care Centre	153,108	14,678
Refuel	690	471
KIT	-	50
Total incoming resources	441,581	223,191
EXPENDITURE		
Charitable activities		
Value of donated FEED items	224,819	194,530
Salaries	31,331	23,800
FEED costs	5,736	797
Refuel costs	1,909	1,053
KIT costs	684	
Total resources expended	264,479	220,180
Net income	<u>177,102</u>	<u>3,011</u>
MOVEMENT IN FUND		
Care Centre Fund brought forward	44,934	41,923
Movement in fund	<u>177,102</u>	<u>3,011</u>
Care Centre Fund carried forward	<u>222,036</u>	<u>44,934</u>

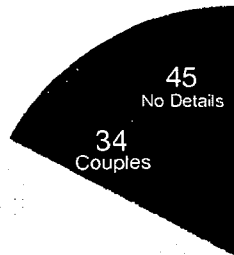
In addition to the above, the church funded direct costs for the Care Centre of £18,988 (£32,191 2019) from general funds. The church also provided building space, facilities and additional support functions at no charge to the Care Centre Fund.

This page does not form part of the statutory financial statements.

THE VINEYARD CARE CENTRE

— 2020 —

Existing Guests *regularly visiting weekly/monthly*



177
Individuals

212
Families



Average of 6 attendees
for our weekly zoom
café

We have had
839
new agency referral visits



We ran 2 CAP Lifeskills/
money management
(hybrid) courses pre
lockdown



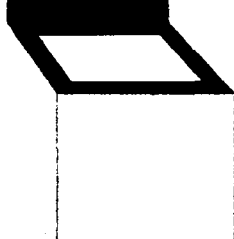
We've called to check in
& pray for 300+ guests

598
Singles/Couples

241
Families

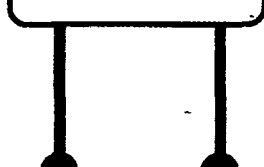
Making a total of 5,791 guests visits in 2020

DONATIONS

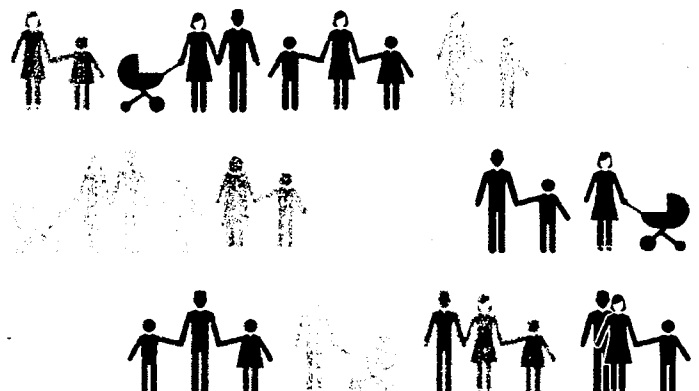


176,097 total donations
from supermarkets,
schools, churches and
individuals

HOPE LANE



18 new streets have
started collecting for us



We worked with 10 families, in partnership
with various agencies (social workers, child
in need, child protection, domestic violence,
trafficking). Plus 5 families in need of regular
general support

THE VINEYARD CARE CENTRE

2020

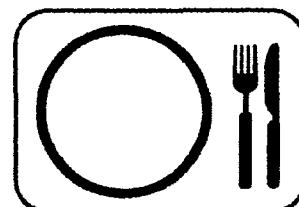
We gave



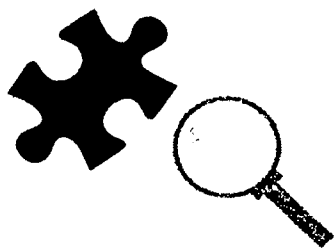
200* Easter eggs



3,585 items of clothing & equipment given
through Kit



883 REFUEL meals



165 games, puzzles,
crosswords & word
searches



376* packs for womans refuge,
mental wellbeing, new home
starter & goodie bags



250 Bibles
50 worship CDs



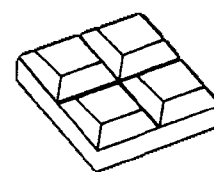
200* Christmas
goodie bag



15 families received
fresh ingredients for
Christmas meal



811 Christmas gifts
& stocking fillers



503 Christmas
advent calendars &
chocolate



70,254 items given
through FEED

*approximate

WWW.THEVINEYARDCHURCH.CO.UK/COMPASSION