

**Company number 3057742**  
**Charity number 1058787**

**Daily Life Limited**  
**(Limited by Guarantee)**

**Report and Financial Statements**  
**for the year ended 31 March 2021**

**Breckman & Company Ltd**  
**Chartered Certified Accountants**  
**49 South Molton Street**  
**London W1K 5LH**



**Daily Life Limited**  
**(Limited by Guarantee)**

**Contents**

	<b>Page</b>
Reference and Administrative Details	1
Trustees' Report	2 - 9
Independent Examiner's Report	10
Statement of Financial Activities (including Income and Expenditure Account)	11 -14
Balance Sheet	15
Notes to the Financial Statements	16 - 23

## **Daily Life Limited**

**(Limited by Guarantee)**

### **Reference and Administrative Details**

#### **Constitution**

The company is a private company limited by guarantee and registered in EW - England and Wales, company number 3057742. It is incorporated under the Companies Act and its governing document is its Memorandum and Articles of Association. The company is a registered charity, number 1058787.

#### **Directors and trustees**

The directors of the charitable company (Daily Life Limited) are its trustees for the purposes of charity law and throughout this report are collectively referred to as the trustees.

As set out in the Articles of Association new trustees are appointed by proposal from existing trustees in writing via the Secretary, a proposal that is then voted on at any General Meeting. At each Annual General Meeting one third of trustees stand down and may put themselves forward for re-election.

Policies and procedures adopted for the induction and training of trustees have been formalised, and a package of online resources has been established. The trustees serving during the year and since the year-end, were:

Suzanne Alleyne	appointed 3 June 2020
Kiera Blakey	appointed 9 December 2020
Sharon Malika Booker	appointed 3 June 2020
Riah Charles	appointed 23 September 2020
Alice Hockey	resigned 23 September 2020
Anthony Roberts	
Elizabeth Wells	

#### **Artistic director**

Bobby Baker

#### **Independent Examiners**

Breckman & Company Ltd, Chartered Certified Accountants, 49 South Molton Street, London W1K 5LH.

#### **Bankers**

CAF (Charities Aid Foundation), 25 Kings Hill Avenue, Kings Hill, West Malling, Kent ME19 4TA.

#### **Solicitors**

Harbottle & Lewis, 7 Savoy Court, London WC2R 0EX.

#### **Registered office and operation address**

Studio 26, Collage Arts Space 3, 40 Cumberland Road, London N22 7SG.

**Daily Life Limited**  
**(Limited by Guarantee)**  
**Trustees' Report**

The trustees present their annual report together with the financial statements of the charity for the year ended 31 March 2021, which are also prepared to meet the requirements for a directors' report and accounts for Companies Act purposes.

The reference and administrative details set out on page 1 forms part of this report. The financial statements comply with the Charities Act 2011, the Companies Act 2006, the Memorandum and Articles of Association, and Accounting and Reporting by Charities: Statement of Recommended Practice applicable to charities preparing their accounts in accordance with the Financial Reporting Standard applicable in the UK and Republic of Ireland (FRS 102).

### **Principal Activity**

The principal activity of the company during the year continued to be the development and presentation of artistic and educational projects, with an emphasis on public engagement and advocacy for people experiencing adversity due to gender, health, disability or social circumstance.

### **Our Mission**

Daily Life Ltd. (DLL) was founded in 1995 to support the production and touring of Bobby Baker's (BB) artworks. BB's practice, in form, site and audience reach, is highly innovative. Her work is in great demand and focuses on undervalued and stigmatised aspects of everyday life, and human behaviour, expressly undertaking to foreground the lives of women in the mainstream and bring status to so-called 'humble' daily activity.

In a career spanning four decades she has, amongst other things, danced with meringue ladies; made a life-sized version of her family out of cake; and driven around the streets of London strapped to the back of a truck yelling at passers-by through a megaphone to 'Pull Yourselves Together.'

BB's acclaimed 2009 Wellcome Collection *Diary Drawings* exhibition about her experience of mental illness and recovery, launched her onto a worldwide arts and mental health platform, connecting her with a growing network of organisations and gifted practitioners. Since this time, she has aimed to use her position to help promote this talent and foster opportunities for diverse marginalised artists.

DLL provides a rare model of artist leadership. BB is a senior female artist with an unparalleled track record and profile, and an undervalued extensive grassroots influence on artists, women, and people experiencing mental distress, especially younger people. Women of BB's talent and profile still lag significantly behind men in opportunity and parity of esteem. DLL recognises BB's unique position as an older (aged 65+), disabled female artist with experience of the mental health system, recovery and related arts provision.

DLL has a clear vision for 2018-22: to focus principally on production and presentation of BB's work with a major new commission, an international retrospective and a major new project, and the creation of a new digital archive, raising BB's profile, supporting diverse artists by creating greater access to high quality, diverse arts practice.

### **Objectives and Activities**

The charitable objectives as set out in our current governing document are: "to advance education particularly by encouragement of the arts, including drama, ballet, music, singing, literature, sculpture and painting."

### **Diverse Audiences**

Our approach to developing new and diverse audiences grows out of our passionate commitment to working at grassroots. We build on our knowledge and experience by reflecting, project-by-project, to learn and evolve. We listen to and learn from local people and partners to adapt our approach, whilst maintaining high quality production values.

**Daily Life Limited**  
**(Limited by Guarantee)**

**Trustees' Report**

Our ethos is more of a way of being, than a set of methods. We are authentically interested in the people we aim to reach, and enjoy the process of learning from them. Ultimately, it is the buzz, quality of work and genuine good will and friendliness that we bring, which will engage the most people, help develop sustainable audiences, and create maximum impact long term. This is much more than a goal orientated approach - it is a journey undertaken to develop the best relationships with a family of people from all areas of society, and to keep them coming for more.

Our work progresses what we have learnt about building new audiences, and retaining existing ones – using knowledge related to harder to reach populations. We prioritise working with partners, learning from them and focusing on areas that are new to DLL. We will continue to learn new methods and develop our model of engagement to ensure that our high-quality artistic offer covers diverse audiences by:

- Reaching marginalised people who are least involved in the arts.
- Reaching mainstream audiences with a more diverse arts offer.
- Providing new platforms for work to be seen locally, across the UK and internationally.

We will build on new and existing partnerships with artists and cultural organisations so that all our projects develop extended networks in arts/ health, providers and service users. In recent years, DLL has presented high quality work to diverse audiences:

- Innovative Lightbox exhibitions in Hackney and Newham: 193,000 people.
- Pilot *Roving Diagnostic Unit*: 3,500 people.
- Touring BB repertoire including *Diary Drawings*: 35,000 people.
- Bobby Baker retrospective exhibition and performance: 20,429 people.
- *Great & Tiny War*, Bobby Baker's major commission for 14-18 NOW: over 1.7k visitors with a reach via social media and national press to 4m people.

**Public Benefit**

In shaping our objectives for the year and planning our activities, the trustees have considered the Charity Commission's guidance on public benefit, including the guidance 'public benefit: running a charity (PB2)'.

The evaluation of DLL's activities across the year – ranging from new commissions, mentoring, talks and events – indicates that our work benefits the public in a number of ways, which are laid out in more detail under Achievements. Key public benefits are in both the artworks themselves, and on the impact BB and DLL's activities had on those who took part or experienced the work.

**Structure and Governance**

DLL's staffing structure is small. BB acts as the Chief Executive and Artistic Director, answerable to a Board of Trustees. As of September 2019, BB manages a salaried Senior Curator post. The Senior Curator (Rachel Fleming-Mulford) is now responsible for the line management of freelance staff. The intention is to recruit a permanent Studio/General Manager, but this was put on hold due to the COVID-19.

A huge achievement for the year was the recruitment of four new board members:

Kiera Blakey, Curator

Malika Booker, Poet

Riah Jocelyn Charles, from the Beyond Suffrage Network Program

Suzanne Alleyne, Cultural Thinker

**Daily Life Limited**  
**(Limited by Guarantee)**  
**Trustees' Report**

### **Achievements and Performance**

Like many organisations in the cultural sector DLL's planned activities for the year were dramatically affected by the Covid19 pandemic. However, the team worked hard to adapt, including sorting out new remote-working systems and tech with whereby and zoom; ensuring self-care and mental wellbeing were as high priorities as possible, both internally at DLL and with partners, given the particular challenge of being a small team. In March 2020 we had plans to recruit a new key team member, which had to be postponed. We adapted and reconsidered project work – both planned and new – in light of the ever-changing landscape. We took the opportunity to focus on DLL's digital offer as it became increasingly important as a way of engaging with our diverse communities.

### **DLL website**



A new website was created, <https://www.dailylifeltd.co.uk/> - working with local IT specialist Colin Ozanne, designer Joe Hales, and editor/copy editor/curator Gemma Lloyd. It includes new, clear information and images on past projects, as well as further resources. The site is in development so that it will become more accessible to a wide range of differently-abled people and better able to show the depth and range of BB's art practice, and the broad reach and significance of BB and DLL's work. It also includes strong, updated statements about DLL's mission, who we are, and what our current areas of work are.

As a next phase money was included in DLL's application to the Arts Council Cultural Recovery Fund towards further development of the website and DLL's digital offer. An initial relationship was established with Unthinkable Digital to support this work. Unthinkable Digital is a leading creative enterprise, that works in close collaboration with small arts organisations to develop their approach to digital. Their track record of working in disability arts makes them an ideal fit for DLL, e.g. their work with Heart n Soul over the last 10 years to transform their engagement with people with learning disabilities and autism.

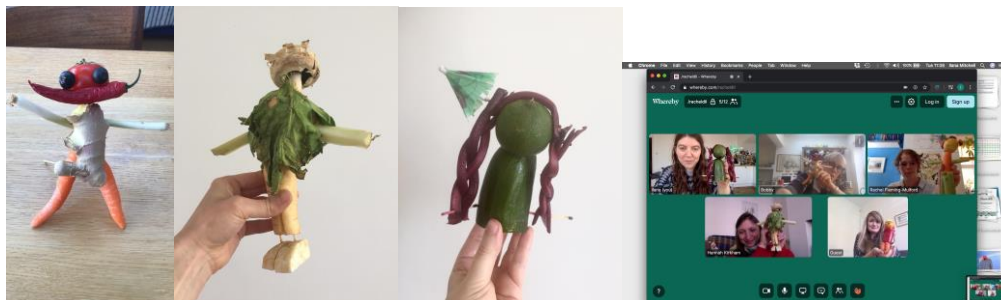
This work with Unthinkable will continue across 2021-22 and beyond. This will include developing a theory of social-creative change through digital engagement, and creating a suite of technologies, assets and content to turbo-charge our digital presence.

**Daily Life Limited**  
**(Limited by Guarantee)**  
**Trustees' Report**

***Drawing on a (Grand) Mother's Experience (DOGME) Tour***

All 2020 tour dates were postponed due to the pandemic. The DLL team continued to work with independent producer Catherine Turner and DLL trustee Anthony Roberts to reimagine the tour for Covid times. A great deal of thought was put into this with the eventual decision to make a high-quality film of the work which could go out on a digital tour. Filming was due to take place in February 2021 but was postponed to April 2021 due to the third Covid19 lockdown.

***Great & Tiny War legacy and A New Kind of Table***



Photos from GTW Legacy online tester events in May 2020

At the start of lockdown, the DLL team began to have regular weekly online meetings with Wunderbar in order to keep connected and begin to adapt and develop the legacy program for *Great & Tiny War*. Legacy events were due to take place in April and May 2020, but were cancelled due to lockdown. Over the course of the year a series of online tester events were developed, first with Wunderbar and then with inspirational new partner Suzanne Alleyne (now [Alleyne&](#)) to incorporate ideas from SA's [Neurology of Power](#) project.

The partnership and project developed into *A New Kind of Table*. This is a pioneering, artist-led mentorship program for talented creative practitioners who already feel on the outside of the

artworld and are further marginalised or disempowered by COVID-19. Through a combination of innovative events and activities that embolden, connect and support individuals in creative, positive ways, it works to break down the traditional balance of power within the arts sector.

*A New Kind of Table* challenges what it means to be in a position of power in the arts and is about changing who is 'at the table'.

The project was successful in achieving a Paul Hamlyn Foundation grant of £20k in December 2020 for further R&D during 2021.

The GTW microsite was updated and the legacy film is near completion. We also have a pdf version of the book which is downloadable from our website.



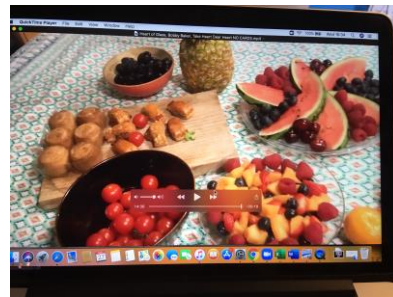
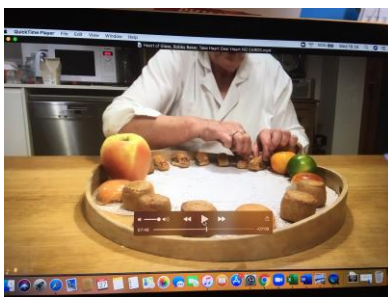
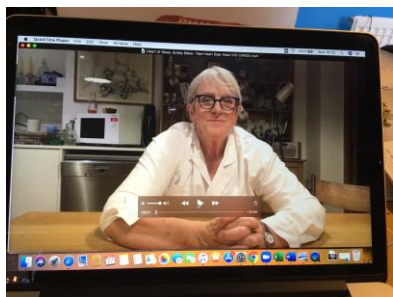
**Daily Life Limited**  
**(Limited by Guarantee)**  
**Trustees' Report**

**EPIC DOMESTIC**

BB continued to develop plans and funding applications to support EPIC DOMESTIC (ED), her artistic quest to create a Domestic Revolutionary Party fit for the 21st Century. BB sees this as a major project that will span several years comprising new drawings, large-scale new images, posters, prints, and performative events as propaganda for the revolution. During 2020/21 DLL was successful in achieving two grants to support the project: an initial small artist grant in summer 2020 from Unlimited, celebrating the work of disabled artists, and a larger £10k R&D commission from Unlimited with funding from Museum of the Home and Arts Council England. See more below under 2021/22.

BB's planned residency at Fossekleiva art centre in Norway was postponed – likely to be summer 2023, due to Covid-19. They remain very keen for BB to come and produce work for the art centre. <https://fossekleiva.no>.

Heart of Glass / *With for and About* online conference



Stills from *Take Heart Dear Heart*, 2020

BB's short film *Take Heart Dear Heart*, made specifically for Heart of Glass' 5th *With For About* conference, was shown on 17 June 2020 and can be viewed at 1:25:30 here: <http://www.withforabout.com/>.

The conference took place online, responding to the additional challenges that Covid-19 creates for many marginalised people and communities.

It asked:

- *What creative solutions have marginalised people developed to survive before Covid-19?*
- *What creative ways of being and organising are being made now in response to Covid-19?*
- *How do we embed and share these solutions, ways of being and organising now and into the future?*

The film looks at BB's experience as a woman, as someone with experience of the mental health system and physical disability, and as an older person, offering insight and ideas and using food to illustrate and drive home her points.

WOW – Women of the World Foundation Creative Women's Forum

Throughout the year BB and RFM regularly attended a new online forum established by WOW Women of the World Foundation. This became an important touch stone for staying connected to other women across the cultural sector and a space to develop and discuss ideas. In July 2020 BB and RFM co-convoked and spoke at one of the events. This session (9 July) focused on domestic labour and work, particularly in the visual arts and museums sectors. BB and RFM invited new attendees from the visual arts to help ensure this and future meetings are fully cross-artform.

**Daily Life Limited**  
**(Limited by Guarantee)**  
**Trustees' Report**

BB and Suzanne Alleyne also contributed to another session at the end of July, giving details of *A New Kind of Table* as part of a round-up of positive and progressive projects that have come out of the difficulties and inequalities created (or added to) by the pandemic.

**Digital**

DLL website:

- Website new visitor rate: 98.5% (3,329)
- Website returning visitor rate: 1.5% (48)
- Website visits: 4,481
- Page views: 9,467
- Average time spent on website: 1 minute 40 seconds

These figures are for both the old and new website. Visitors fell by 886 from the previous year, but this will have been affected by the website change. Followers across DLL's social media platforms increased steadily.

Social media followers including Instagram (DLL & BB) Twitter + Facebook: 2,945

**Staffing and Resources**

This was a very challenging year in terms of staffing and lack of capacity following the postponement of the appointment of a Studio Administrator earlier in the year. It meant an increased workload for BB, RFM and Janine Stolz (DLL Freelance Finance Manager), which, whilst necessary during the emergency period, was unsustainable in the longer term. BB and RFM went on part time furlough January to March 2021 as a result of lockdown and school closures.

However, a huge achievement of January - March 2021 was the successful submission of an application to ACE's Cultural Recovery Fund, working with independent fundraiser Fi Mason. This was for £61,944 to build up core reserves, as well as bring in temporary freelance staff April – June 2021, digital development, and business mentoring. Having reduced costs as far as possible to minimise the gap between income and expenditure, the CRF was about enabling DLL to build back, drawing in new partnerships, earned income and grant funding to ensure our viability throughout 21-22 and beyond, whilst employing a group of freelancers, with the various skills we need. DLL received news that the application was successful at the end of March 2021.

**Curatorial Advisory Group**

A curatorial advisory group was established in 2020, with curators from the UK and Spain: Honor Beddard, Viv Reiss, Deborah Smith, and Clara Zarza. They are referenced on the new website and their specialisms/interests include public realm commissioning, arts and health, feminist art practice, and collections.

The aim of the group is to support RFM in raising BB's profile and status, particularly in the visual arts sector where BB has historically had less recognition. At the first meeting, BB spoke in detail about her work and its history and there was then an initial discussion which covered commissioning, collections, and exhibition partners. Subsequent meetings will focus on just one of these specific areas to enable more detailed feedback and advice.

**Daily Life Limited**  
**(Limited by Guarantee)**  
**Trustees' Report**

**Financial Review**

During the financial year 2020-21 DLL received income of £114,080 (£137,762 in 2019-20) of which £4,000 was restricted (£39,150 in 2019-20). As a National Portfolio Organisation of the Arts Council of England, DLL received the 3rd of four annual grants of £88,510 with a small uplift to £90,139. Grants were received from Unlimited/Shape £1,000 for the project EPIC DOMESTIC, London Borough of Haringey £10,000 (Covid Support), Wellcome Trust £3,000, as well as the HMRC Coronavirus Job Retention Scheme £9,338. The Wellcome Trust was the remaining tranche of funding towards the *Great & Tiny War* project. At 31 March 2021 unrestricted reserves stood at £30,066 increased from £11,280 at 31 March 2020. Financial sustainability remains the greatest risk for the charity which is regularly reviewed by the Trustees and is reflected in the reserves policy. The organisation also faced the additional threat of the pandemic in 2020-21. Unrestricted reserves have increased due to reduction in spending with the delay of the Studio Administrator recruitment and postponement of project expenditure. During 2020-21 the Trustees and executive took the opportunity to review sustainability initiatives. With the help of a fundraiser, DLL was able to successfully bid for new project funding for the ANKOT project and digitising Bobby Baker's art work, as well as securing a Culture Recovery Fund grant.

**Reserves Policy**

The Trustees have determined that a minimum level of free reserves needs to be maintained. This figure has been calculated as a minimum of 3 months' operating costs (£22,000 based on 2019-20 costs, 2020-21 not being a typical year due to Covid). At 31 March 2021 DLL has achieved this minimum level of free reserves.

**Future Plans**

Activity for April 2021 onwards:

Filming BB's performance work, *Drawing on a (Grand)mother's Experience*, working with emerging producer, Catherine Turner, who is a disabled person with multiple impairments. This will enable a new digital tour of the work, adapted from the physical tour due to the pandemic. Funded by Arts Council England.

**Development of the following projects:**

***A New Kind of Table***

A DLL project in partnership with Wunderbar and Suzanne Alleyne & Co. *A New Kind of Table* is a pioneering, artist-led mentorship program for talented artists who already feel on the outside of the artworld and are further marginalised or disempowered by COVID-19. Through a combination of innovative events and activities that embolden, connect and support individuals in creative, positive ways, it works to break down the traditional balance of power within the arts sector. *A New Kind of Table* challenges what it means to be in a position of power in the arts and is about changing who is 'at the table'.

***EPIC DOMESTIC: the founding of a Domestic Revolutionary Party***

True to Bobby Baker's signature style, ED is a hugely relatable yet sharply witty project, highlighting that a functioning society is built upon grossly under-valued domestic labour, care work and childcare. This work continues largely unseen in the home through pandemics, war, economic depression or prosperity.

ED is inspired by the visual culture of the soviet revolution and the activism of the dada movement in the early 20th Century, coupled with a fascination for how ideas spread and take hold in contemporary society.

This project will be developed further in 2021/22 through the R&D commission from Unlimited, celebrating the work of disabled artists, with funding from Museum of the Home and Arts Council England.

**Daily Life Limited**  
**(Limited by Guarantee)**  
**Trustees' Report**

***BB ARCHIVE and IP***

A project focusing on digital development and BB's archive as a package of work, prioritising the photographing and captioning of all BB's 711 *Diary Drawings* and a partnership with Outside In. Photography will be by Andrew Whittuck, and the project will be managed by Curator Gemma Lloyd. It will include a collaboration without Outside In's 'Step Up' programme, culminating in an online exhibition on Outside In's website, accompanied by a range of talks, with a strong focus on accessibility. Funded by Arts Council England.

Work on the digital archive will also include BB becoming a DACs artist, ensuring better copyright and legal protection for her work, and stronger visibility. As a DACs artist, a selection of images of BB's key works will be made accessible and searchable through the DACs Artimage website <https://www.artimage.org.uk/> – a digital image solution dedicated to sourcing and licensing exceptional modern and contemporary art.

**Small Company Exemptions**

This report is prepared in accordance with the provisions of the Companies Act 2006 relating to small companies.

This report was approved by the Board of Trustees on 8 December 2021 and signed on its behalf by



**Kiera Blakey**  
**Trustee**

**Independent Examiner's Report to the Trustees  
of Daily Life Limited**

**(Limited by Guarantee)**

I report on the accounts of the charity for the year ended 31 March 2021, which are set out on pages 11 to 23.

**Respective responsibilities of trustees and examiner**

The trustees (who are also the directors of the company for the purposes of company law) are responsible for the preparation of the accounts. The trustees consider that an audit is not required for this year under section 144(2) of the Charities Act 2011 (the 2011 Act) and that an independent examination is needed.

Having satisfied myself that the charity is not subject to audit under company law and is eligible for independent examination, it is my responsibility to:

- examine the accounts under section 145 of the 2011 Act;
- follow the procedures laid down in the general Directions given by the Charity Commission (under section 145(5)(b) of the 2011 Act; and
- state whether particular matters have come to my attention.

**Basis of independent examiner's statement**

My examination was carried out in accordance with general Directions given by the Charity Commission. An examination includes a review of the accounting records kept by the charity and a comparison of the accounts presented with those records. It also includes consideration of any unusual items or disclosures in the accounts, and seeking explanations from you as trustees concerning any such matters. The procedures undertaken do not provide all the evidence that would be required in an audit, and consequently no opinion is given as to whether the accounts present a "true and fair view" and the report is limited to those matters set out in the statement below.

**Independent examiner's statement**

In connection with my examination, no matter has come to my attention:

1. which gives me reasonable cause to believe that in, any material respect, the requirements:

- to keep accounting records in accordance with section 386 of the Companies Act 2006; and
- to prepare accounts which accord with the accounting records, comply with the accounting requirements of section 396 of the Companies Act 2006 and with the methods and principles of the Statement of Recommended Practice: Accounting and Reporting by Charities

have not been met; or

2. to which, in my opinion, attention should be drawn in order to enable a proper understanding of the accounts to be reached.

**Graham Berry FCCA  
Breckman & Company Ltd  
Chartered Certified Accountants**

49 South Molton Street  
London W1K 5LH

8 December 2021

**Daily Life Limited**

(Limited by Guarantee)

**Statement of Financial Activities (including Income and Expenditure Account)  
for the year ended 31 March 2021**

	Notes	Unrestricted funds £	Restricted funds £	2021 Total £	Unrestricted funds £	Restricted funds £	2020 Total £
<b>Income and endowments from:</b>	<b>2</b>						
Donations and legacies - page 12		109,477	-	109,477	88,510	-	88,510
Charitable activities							
Theatre - page 12		604	4,000	4,604	10,099	39,150	49,249
Investments		-	-	-	3	-	3
<b>Total</b>		<u>110,081</u>	<u>4,000</u>	<u>114,081</u>	<u>98,612</u>	<u>39,150</u>	<u>137,762</u>
<b>Expenditure on:</b>							
Raising funds:							
Fundraising - page 13		3,375	-	3,375	-	-	-
Charitable activities:							
Theatre - page 13		87,920	9,832	97,752	102,927	43,080	146,007
<b>Total</b>		<u>91,295</u>	<u>9,832</u>	<u>101,127</u>	<u>102,927</u>	<u>43,080</u>	<u>146,007</u>
<b>Net movement in funds:</b>							
<b>Net income / (expenditure)</b>	<b>3</b>	18,786	(5,832)	12,954	(4,315)	(3,930)	(8,245)
<b>Reconciliation of funds:</b>							
<b>Total funds brought forward</b>		<u>11,280</u>	<u>5,832</u>	<u>17,112</u>	<u>15,595</u>	<u>9,762</u>	<u>25,357</u>
<b>Total funds carried forward</b>	<b>13, 14</b>	<u><u>30,066</u></u>	<u><u>-</u></u>	<u><u>30,066</u></u>	<u><u>11,280</u></u>	<u><u>5,832</u></u>	<u><u>17,112</u></u>

The notes on pages 16 to 23 form an integral part of these financial statements.

The statement of financial activities includes all gains and losses recognised in the year. All income and expenditure derives from continuing activities.

**Daily Life Limited**

**(Limited by Guarantee)**

**Year ended 31 March 2021**

	<b>2021</b>		<b>2020</b>	
	<b>£</b>	<b>£</b>	<b>£</b>	<b>£</b>
<b>Income from donations and legacies</b>				
<b>Grants</b>				
Arts Council England - NPO funding	90,139		88,510	
LB Haringey	10,000		-	
HMRC Job Retention Scheme	9,338		-	
	<u>          </u>		<u>          </u>	
		109,477		88,510
		<u>          </u>		<u>          </u>
<b>Income from charitable activities</b>				
<b>Theatre</b>				
<b>Earned income</b>				
Fees/box office	604		10,099	
	<u>          </u>		<u>          </u>	
		604		10,099
<b>Project specific funding</b>				
Imperial War Museum/14-18 NOW	-		7,650	
Colchester Arts Centre & WOW	-		5,000	
Wellcome Trust	3,000		26,500	
Unlimited/Shape	1,000		-	
	<u>          </u>		<u>          </u>	
		4,000		39,150
		<u>          </u>		<u>          </u>
		4,604		49,249
		<u>          </u>		<u>          </u>

**Daily Life Limited**

**(Limited by Guarantee)**

**Year ended 31 March 2021**

	<b>2021</b>	<b>2020</b>
	<b>£</b>	<b>£</b>
<b>Expenditure on raising funds</b>		
<b>Fundraising</b>		
Fundraising costs	3,375	-
	<u>3,375</u>	<u>-</u>
	<u><u>3,375</u></u>	<u><u>-</u></u>
 <b>Expenditure on charitable activities</b>		
<b>Theatre</b>		
<b>Production costs</b>		
Fees	1,565	21,269
Project expenses	156	791
Creative collaborators	-	28,500
Travel/transport	-	982
Marketing/publicity	45	3,625
Storage	2,008	2,043
	<u>3,774</u>	<u>57,210</u>
 Support and governance costs - page 14	93,978	88,797
	<u>97,752</u>	<u>146,007</u>
	<u><u>97,752</u></u>	<u><u>146,007</u></u>



**Daily Life Limited**

**(Limited by Guarantee)**

**Year ended 31 March 2020**

	<b>2021</b>		<b>2020</b>	
	<b>£</b>	<b>£</b>	<b>£</b>	<b>£</b>
<b>Support and governance costs</b>				
<b>Support costs</b>				
<b>Office overheads</b>				
Rent/rates	5,940		6,062	
Office expenses	502		1,288	
Computer expenses	887		1,858	
Website	4,357		1,543	
Telephone/internet	180		454	
Insurance	1,384		1,126	
Depreciation of fixtures/fittings/equipment	169		1,043	
		13,419		13,374
<b>Administration costs</b>				
Salaries	66,420		54,715	
Freelance fees	6,779		9,159	
Social security costs	2,742		2,666	
Staff pension costs	1,618		1,350	
Staff training/recruitment	180		3,405	
Travel/transport	43		642	
Entertaining/hospitality	-		592	
		77,782		72,529
<b>Professional/financial</b>				
Bank charges	114		72	
		114		72
<b>Governance costs</b>				
Legal/professional	13		84	
Accountancy/consultancy	2,650		2,650	
Board meetings	-		88	
		2,663		2,822
		<u>93,978</u>		<u>88,797</u>

**Daily Life Limited**

(Limited by Guarantee)

**Balance Sheet  
31 March 2021**

		2021		2020	
	Notes	£	£	£	£
<b>Fixed assets</b>					
Tangible assets	8		-		169
<b>Current assets</b>					
Debtors	9	12,148		14,162	
Cash at bank and in hand		48,304		16,256	
		<u>60,452</u>		<u>30,418</u>	
<b>Liabilities</b>					
Creditors: amounts falling due within one year	10	<u>(30,386)</u>		<u>(13,475)</u>	
<b>Net current assets</b>			30,066		16,943
<b>Total assets less current liabilities</b>			<u>30,066</u>		<u>17,112</u>
<b>The funds of the charity</b>					
Unrestricted funds	13				
General fund			30,066		11,280
Restricted income funds	14		-		5,832
<b>Total charity funds</b>			<u>30,066</u>		<u>17,112</u>

For the year ending 31 March 2021 the company was entitled to exemption from audit under section 477 of the Companies Act 2006 relating to small companies.

Directors' responsibilities:

- The members have not required the company to obtain an audit of its accounts for the year in question in accordance with section 476;
- The directors acknowledge their responsibilities for complying with the requirements of the Act with respect to accounting records and the preparation of accounts.

The financial statements have been prepared in accordance with the provisions of the Companies Act 2006 applicable to companies subject to the small companies regime.

The financial statements were approved by the Board of Trustees on 8 December 2021 and signed on its behalf by



**Kiera Blakey**  
Trustee

The notes on pages 16 to 23 form an integral part of these financial statements.

## **Daily Life Limited**

### **(Limited by Guarantee)**

#### **Notes to the Financial Statements for the year ended 31 March 2021**

#### **1. Accounting policies**

##### **1.1. Basis of preparing the financial statements**

The financial statements have been prepared in accordance with Accounting and Reporting by Charities: Statement of Recommended Practice (issued October 2019) applicable to charities preparing their accounts in accordance with the Financial Reporting Standard applicable in the UK and Republic of Ireland (FRS 102) (effective 1 January 2019) - (Charities SORP (FRS 102)) and the Companies Act 2006.

The charity meets the definition of a public benefit entity under FRS 102. Assets and liabilities are initially recognised at historical cost or transaction value unless otherwise stated in the relevant accounting policy note.

##### **1.2. Preparation of the accounts on a going concern basis.**

The charity is dependent on the continued support of grant aiding bodies. The trustees believe that the charity will continue to receive this support and accordingly consider that it is appropriate to prepare the financial statements on the going concern basis.

##### **1.3. Incoming resources**

All incoming resources are included in the Statement of Financial Activities when:

- the charity is legally entitled to the funds
- any performance conditions attached to the income have been met or are fully within the control of the charity
- there is sufficient certainty that receipt of the income is considered probable
- the amount can be reliably measured

##### **- Donations and legacies**

Grants/donations are recognised in incoming resources in the year in which they are receivable, except as follows:

- when donors specify that grants/donations given to the charity must be used in future accounting periods, the income is deferred until those periods
- when donors impose conditions which have to be fulfilled before the charity becomes entitled to use such income, the income is deferred and not included in incoming resources until the preconditions for use are met.

##### **- Charitable activities**

Theatre income - income from box office, performance fees and sundry other theatrical income is included in incoming resources in the period in which the relevant show takes place.

Project specific funding - when donors specify that donations and grants are for particular restricted purposes, which do not amount to pre-conditions regarding entitlement, this income is included in incoming resources of restricted funds when receivable.

## **Daily Life Limited**

**(Limited by Guarantee)**

### **Notes to the Financial Statements for the year ended 31 March 2021**

#### **- Investment income**

Interest on funds held on deposit is included when receivable and the amount can be measured reliably by the charity; this is normally upon notification of the interest paid or payable by the Bank.

#### **1.4. Expenditure**

All expenditure is included on an accruals basis inclusive of any VAT which cannot be recovered and is recognised when:

- there is a legal or constructive obligation to make a payment
- it is probable that settlement will be required
- the amount of the obligation can be measured reliably

#### **- Costs of raising funds**

Costs incurred in attracting donations, and those incurred in trading activities that raise funds.

#### **- Charitable activities**

Theatre production costs - costs incurred in production and running of productions toured in the year.

#### **- Support costs**

The administrative and overhead costs associated with running the office from which the company operates as well as governance costs. Support costs are wholly attributable to theatre production costs.

#### **- Governance costs**

Costs associated with the constitutional and statutory requirements of the charity.

#### **1.5. Fund accounting**

Funds held by the charity are either:

- Unrestricted general funds - these are funds which can be used in accordance with the charitable objects at the discretion of the trustees.
- Restricted funds - these are funds that can only be used for particular restricted purposes within the objects of the charity. Restrictions arise when specified by the donor or when funds are raised for particular restricted purposes.

Further explanation of the nature and purpose of each fund is included in the notes to the financial statements.

#### **1.6. Tangible fixed assets and depreciation**

Individual fixed assets costing £100 or more are capitalised at cost.

Depreciation is provided at annual rates calculated to write off the cost less residual value of each asset over its expected useful life, as follows:

Fixtures/fittings/equipment    -    33% on straight line

## Daily Life Limited

(Limited by Guarantee)

### Notes to the Financial Statements for the year ended 31 March 2021

#### 1.7. Debtors

Trade and other debtors are recognised at the settlement amount due after any trade discount offered. Prepayments are valued at the amount prepaid after taking account of any trade discounts due.

#### 1.8. Cash at bank and in hand

Cash at bank and in hand includes cash and short term highly liquid investments with a short maturity of three months or less from the date of acquisition or opening of the deposit or similar account.

#### 1.9. Creditors and provisions

Creditors and provisions are recognised where the charity has a present obligation resulting from a past event that will probably result in the transfer of funds to a third party and the amount due to settle the obligation can be measured or estimated reliably. Creditors and provisions are normally recognised at their settlement amount after allowing for any trade discounts due.

#### 1.10. Pensions

The company operates a defined contribution scheme for the benefit of its employees. Contributions payable are recognised as expenditure when due.

#### 1.11. Financial Instruments

The charity only has financial assets and financial liabilities of a kind that qualify as basic financial instruments. Basic financial instruments are initially recognised at transaction value, and subsequently measured at their settlement value.

#### 1.12. Significant Accounting Estimates and Judgements

In determining the carrying amounts of certain assets and liabilities, the charity makes assumptions of the effects of uncertain future events on those assets and liabilities at the balance sheet date. The charity's estimates and assumptions are based on historical experience and expectation of future events and are reviewed annually.

### 2. Incoming resources

The incoming resources for the year have been derived from the principal activity undertaken wholly in the UK.

### 3. Net income/(expenditure) for the year is stated after charging:

	2021 £	2020 £
Depreciation of tangible fixed assets	169	1,043
Independent Examiner's remuneration: - independent examination	2,650	2,650

**Daily Life Limited**

**(Limited by Guarantee)**

**Notes to the Financial Statements  
for the year ended 31 March 2021**

**4. Trustees' emoluments and reimbursed expenses**

The trustees received no remuneration during the year (2020 - £nil).

The aggregated amount reimbursed to trustees during the year was £nil (2020 - £88).

**5. Staff costs and numbers**

<b>Staff costs</b>	<b>2021 £</b>	<b>2020 £</b>
Salaries and wages	66,420	54,715
Social security costs	2,742	2,666
Pension costs	1,618	1,350
	<u>70,780</u>	<u>58,731</u>

No employee earned £60,000 or more during the year (2020 - nil).

The key management personnel of the charity comprise the Trustees and the Senior Management Team. The total employee benefits of the key management personnel of the charity were £44,154 (2020 - £43,076).

**Staff numbers**

The average numbers of full-time equivalent employees (including casual and part time staff) during the year was made up as follows:

	<b>2021 Number</b>	<b>2020 Number</b>
Support and production	<u>2</u>	<u>2</u>

**6. Pension costs**

The company operates a defined contribution pension scheme in respect of its employees. The scheme and its assets are held by independent managers. The pension charge represents contributions due from the company and amounted to £1,618 (2020 - £1,350).

**Daily Life Limited**

**(Limited by Guarantee)**

**Notes to the Financial Statements  
for the year ended 31 March 2021**

**7. Corporation taxation**

The charity is exempt from tax on income and gains falling within section 505 of the Taxes Act 1988 or section 252 of the Taxation of Chargeable Gains Act 1992 to the extent that these are applied to its charitable objects.

**8. Fixed assets - tangible assets**

	<b>Fixtures/ fittings/ equipment £</b>
<b>Cost</b>	
1 April 2020 /	4,545
1 April 2020 /	
31 March 2021	4,545
<b>Depreciation</b>	
1 April 2020	4,376
Charge for year	169
31 March 2021	4,545
<b>Net book values</b>	
31 March 2021	-
31 March 2020	169

**9. Debtors**

	<b>2021 £</b>	<b>2020 £</b>
Trade debtors	5,150	8,360
Other debtors	2,866	1,485
Prepayments and accrued income	4,132	4,317
	12,148	14,162

**Daily Life Limited**

(Limited by Guarantee)

**Notes to the Financial Statements  
for the year ended 31 March 2021**

<b>10. Creditors: amounts falling due within one year</b>	<b>2021 £</b>	<b>2020 £</b>
Trade creditors	146	6,624
Other taxation/social security	3,250	899
Other creditors	-	202
Deferred income	23,150	-
Accruals	3,840	5,750
	<u>30,386</u>	<u>13,475</u>

<b>11. Deferred income</b>	<b>£</b>
Amount deferred in the year	23,150
Balance at 31 March 2021	<u>23,150</u>

Deferred income relates to grant income received in advance where activities have been postponed due to COVID-19.

**12. Limited by guarantee**

The company is limited by guarantee and does not have a share capital. Each member gives a guarantee to contribute a sum, not exceeding £1, to the company should it be wound up. At 31 March 2021 there were 6 members.

<b>13. Unrestricted funds</b>	<b>Brought forward £</b>	<b>Incoming resources £</b>	<b>Outgoing resources £</b>	<b>Carried forward £</b>
General fund	<u>11,280</u>	<u>110,081</u>	<u>(91,295)</u>	<u>30,066</u>



**Daily Life Limited**

(Limited by Guarantee)

**Notes to the Financial Statements  
for the year ended 31 March 2021**

14. Restricted funds	Brought forward £	Incoming resources £	Outgoing resources £	Carried forward £
The Great and Tiny War	4,318	3,000	(7,318)	-
DOGME	1,514	-	(1,514)	-
Epic Domestic	-	1,000	(1,000)	-
	<u>5,832</u>	<u>4,000</u>	<u>(9,832)</u>	<u>-</u>

**The Great and Tiny War**

GTW is an ambitious art installation designed to inhabit 7 rooms of a house in Tyneside, bringing together Bobby Baker's (BB) 're-imagining' of WW1, designing key artworks to mark each year, including five individual installations, an overarching narrative audio tour, and two additional space for refreshments, workshops, talks, displaying supporting materials and a relaxed physically accessible space.

**DOGME**

DOGME was first performed at WOW - Women of the World Festival at the Southbank Centre in 2015, following an invitation from WOW founder, Jude Kelly, to re-stage Baker's seminal work, Drawing on a Mother's Experience (1988). By then a grandmother and as dedicated a feminist as ever, Baker chose to instead bring her original performance up to date. It explores the experience of early motherhood from the more reflective vantage point of age and experience, while considering the ongoing challenge of combining motherhood and parental responsibilities with the drive to retain autonomy.

**Epic Domestic**

Epic Domestic is an art project by Bobby Baker: a campaign to create a Domestic Revolutionary Party fit for the twenty first century. It is inspired by the radical and subversive art and activism of the Dada movement in the early 20th Century. The work is also influenced by propaganda posters, prints and photographs from the Soviet Union at around the same time.

**15. Analysis of net assets between funds**

	General funds £
Fund balances at 31 March 2021 are represented by:	
Net current assets	30,066
	<u>30,066</u>

**Daily Life Limited**

**(Limited by Guarantee)**

**Notes to the Financial Statements  
for the year ended 31 March 2021**

**16. Financial commitments**

At 31 March 2021 the company had future minimum lease payments under non-cancellable operating leases, with payments falling due as follows:

	<b>2021</b>	<b>2020</b>
	<b>£</b>	<b>£</b>
<b>Due:</b>		
Within one year	<u>495</u>	<u>495</u>

**17. Related party transactions**

During the year there were no additional related party transactions that required disclosure.