



East Sussex Healthcare
NHS Trust



**East Sussex
Healthcare
NHS Charity**

East Sussex Healthcare NHS Charity

Annual Report and Accounts 2023/24
Registered Charity Number 1058599

www.esht.nhs.uk

CONTENTS



1

Message from the Chair

Page 4

2

About East Sussex Healthcare NHS Charity

Page 6

Our Vision

Page 6

Our Core Priorities

Page 6

Our Hospitals

Page 7

Our Funds

Page 7

3

The Year in Numbers

Page 8

4

How We Helped

Page 9

5

Bids Approved of over £500 during 2023/24

Page 10

Patient Wellbeing

Page 11

Staff Wellbeing

Page 13

Staff Training

Page 14



6 Fundraiser and Volunteer Achievements Page 15

Reference and Administration Details	Page 23
--------------------------------------	---------

7 Governance Page 24

Trustee Arrangements	Page 25
----------------------	---------

Governing Document	Page 25
--------------------	---------

Structure, Governance and Management	Page 26
--------------------------------------	---------

Charity Committee Meetings	Page 27
----------------------------	---------

Governance	Page 28
------------	---------

8 Finance Page 29

Financial Management	Page 30
----------------------	---------

Investments and Investment Policy	Page 31
-----------------------------------	---------

Risk Management	Page 32
-----------------	---------

Reserves	Page 32
----------	---------

Future plans	Page 33
--------------	---------

Statement of Trustee's Responsibilities	Page 34
---	---------

9 Independent Examiner's report Page 36

Statement of Financial Activities for the year ended 31 March 2024	Page 38
--	---------

Balance Sheet as at 31 March 2024	Page 39
-----------------------------------	---------

Statement of Cash flows for the year ended 31 March 2024	Page 40
--	---------

Notes to the Accounts	Page 41
-----------------------	---------

10 Ways in which to support our charity Page 52

1

MESSAGE FROM THE CHAIR

Karen Manson Chair of Charitable Funds Committee

Welcome to the East Sussex NHS Charity Annual Report for 2023/24. Our charity supports the services provided by East Sussex Healthcare NHS Trust, for the benefit of NHS patients and staff.

Thanks to the ongoing generosity and kindness of our donors, our Charity remains in a healthy position with a balance at the end of the year of £2.1m. We will use this money moving forward to continue to invest in patient services, our staff and our facilities to improve the safety and quality of care that the Trust can provide.

Over the last year our investments generated £83,000 and we have been grateful for £138,000 in generous donations from individuals, companies and grants. We have also received £23,000 in legacies. I would like to thank Jean Bullock, Pamela Ellis and Sylvia Stringer whose philanthropy means they will live on in our memory through the care we are able to provide to others.

Through this generosity, our Charity has been able to improve patient care by investing in areas that the Trust would otherwise be unable to afford. In total, we have made grants of £241,000 on medical equipment, staff welfare, education and training, and patient welfare and amenities.



None of this would be possible without the kindness of our donors. A heartfelt thank you to you all. This report demonstrates just how much of a difference the charity has made, and can continue to make, with the invaluable backing of our supporters.

We used 2023/2024 to continue the charitable developmental work that we have undertaken over the last few years, including a new name and logo, the launch of our website and an enhanced social media presence. We hope that this ensures that the charity remains resilient to national trends of reduced income for charities and support from volunteers.

This annual report describes some of our achievements and the ways in which we support our patients and staff, together with the financial statements of the Charity for the year ended 31 March 2024.

The annual report and financial statements comply with the Accounting and Reporting by Charities: Statement of Recommended Practice applicable to Charities preparing their accounts in accordance with the Financial Reporting Standard applicable in the UK and Republic of Ireland (FRS 102) (effective 1 January 2015), the Charities Act 2011 and the UK Generally Accepted Accounting Practice.

I hope that, like me, you will be inspired by our plans and want to be a part of our story – whether as a fundraiser, donor, volunteer or committee member. Please do email esht.charity@nhs.net if you would like to get involved.

I will be retiring from my role of Chair of the Charity in August 2024, with Ama Agbeze kindly agreeing to take over from me. I wish her all the best for the future and hope that the Charity will continue to flourish and provide support for the Trust, its patients and its staff under her leadership.

Karen Manson

Chair of East Sussex NHS Healthcare Trust
Charity



2

ABOUT EAST SUSSEX HEALTHCARE NHS CHARITY

East Sussex Healthcare NHS Charity, formerly East Sussex Healthcare NHS Trust Charitable Fund was formed in October 1996 and is registered with the Charity Commission, the Charity Number is 1058599.

Our Vision:

To provide support to East Sussex Healthcare NHS Trust to enhance patient care and achieve better health outcomes within our hospitals and community.

Our Core Priorities:

- Supporting patient care will continue to be at the heart of everything that we do, as we want patients to have the best possible experience during their stay in the trust. We will work with our NHS colleagues to support key programmes and services that will enhance the treatment that is offered to patients.
- Creating the right workplace is key to improving patient care. We will support NHS colleagues in transforming the way their services are delivered. We will also support transformative projects aligned with the Trust's strategic priorities.
- The NHS is busier than ever. Supporting our staff is crucial in ensuring that patients receive the best possible care. We will work with the Trust to build upon existing and new wellbeing activities and to support further improvements to staff spaces and facilities.

Our Hospitals:

We are dedicated to raising funds for our four hospitals, as well as supporting our services in the community.

- Bexhill Hospital
- Conquest Hospital
- Eastbourne District General Hospital
- Rye And Winchelsea District Memorial Hospital

Our Funds:

At 31 March 2024 the Charity had 103 unrestricted funds and 5 quality funds linked to Bexhill Hospital, Community Services, Conquest Hospital, Eastbourne District General Hospital and an overarching Trust fund. These funds are used to fund Trustwide initiatives as well as bids specific to particular locations.

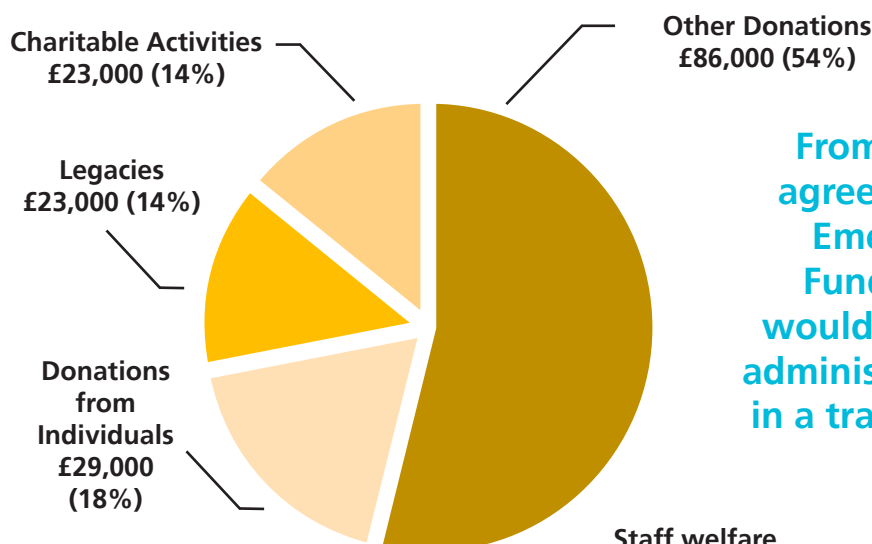
The Charity has a further 20 restricted funds, which include money received from NHS Charities Together for specific projects, and the Eastbourne District General Hospital Scanning Equipment Fund which is for the benefit of Intensive Care and Radiology departments.



3

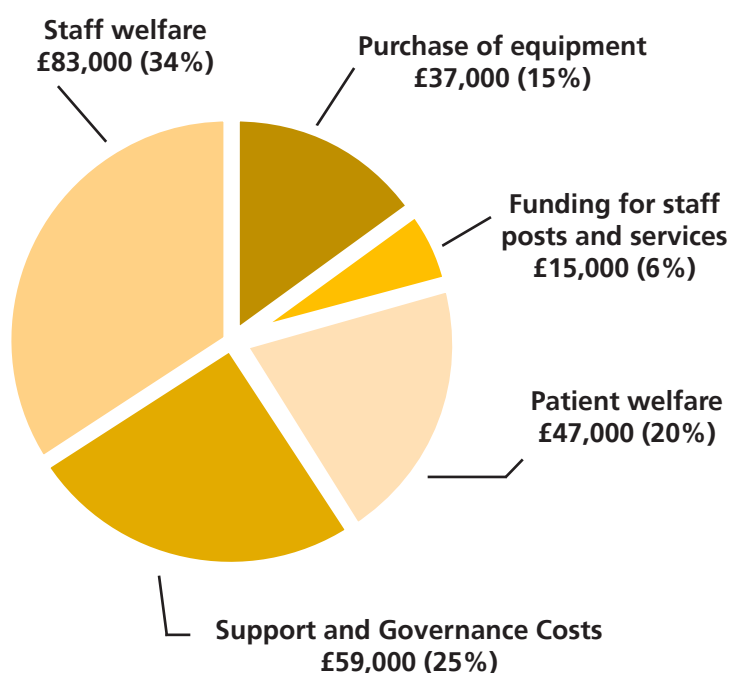
THE YEAR IN NUMBERS

During 2023/24 the Charity received income of £161,000 from donations, legacies, investment income and training activities.



From 5 March 2024 it was agreed that the Eastbourne Emergency Department Fund held by the Charity would be more appropriately administered by ESHT, resulting in a transfer in year of £75,000 to ESHT.

East Sussex Healthcare NHS Charity spent £241,000 during the year on charitable activities, as shown below. This was funded from income of £161,000 and a £83,000 net gain on investments, excluding fund transfers and fundraising expenditure. Refer to note 3 and 4.



4

HOW WE HELPED:

Nano Series Battery Powered Computer Carts £13k

Nano Series Battery Powered Computer Carts will facilitate point-of-care computing for improved efficiency within Pevensey Unit. By eliminating the need for nurses to leave treatment bays to document information or schedule appointments, patient safety will be enhanced and prioritised. The carts will also enable nurses to document patient data in real-time, thereby enhancing workflow throughout the unit.



5

BIDS APPROVED OF OVER £500 DURING 2023/24



Patient Wellbeing

	Amount
Seven battery powered computer carts for Bexhill Irvine Unit.	£13,020
Large lockable medical fridges on wheels for the Judy Beard Unit, these can be can easily be moved if the unit is redeployed to another area.	£4,674
A bursary of £5,000 was awarded to the Urology team to support a Bladder Cancer Identification Project to create a website teaching healthcare professionals' how to correlate the cystoscopy findings of bladder tumours to predict the pathology. The charity provided additional funding in support of this project.	£3,750
Newborn support boxes for vulnerable mothers.	£3,593
Contribution of funds towards increased cost of endobronchial ultrasound scope.	£3,398
Seven orthopaedic chairs for the entrance lobby to Cookson Attenborough Ward.	£3,116
Three clean linen cupboards in the Irvine Unit which will reduce the need for staff to travel frequently to the main linen stores.	£2,748
Falls prevention equipment for Bexhill Irvine Unit.	£2,360
Replacement of chairs used for patients who are being given bad news in the Urology Unit thanks to a donation from the Prostate Cancer Support Group.	£2,356
Moisturiser to support the comfort of patients undergoing cancer treatment and to speed up treatment courses for Pevensey Unit.	£1,918
Recumbent exercise bike for patient rehabilitation in the Eastbourne Cardiac Rehab Unit.	£1,299
A garden shed for the Eastbourne Therapeutic Garden.	£1,248
Replacement scalp cooling caps for Pevensey Unit for their Paxman scalp cooling systems, which helps chemotherapy patients to keep their hair.	£1,086
Music sessions for children on Kipling Ward.	£1,080

Magnifying lamps to support patient treatment for the Judy Beard Day Unit.	£1,003
Repairs to chairs in the Judy Beard Day Unit.	£978
Items for ward based activities to prevent deconditioning in support of the Gold Standard awards in EDGH.	£950
Community Health and Integrated Care Rehabilitation quality improvement huddle boards.	£922
50 x Chin straps for use with the Paxman scalp cooling systems on Pevensey Ward.	£900
Wheelchair scales for the Joint Community Rehabilitation and Motor Neurone Disease teams. These will enable them to monitor the weight of patients outside of acute settings.	£837
Sara steady devices for Benson Ward which will help to improve patient mobility and dignity and to prevent falls.	£775
Ten internet radios for patient use on Pevensey Ward.	£750
Waterproof peripherally inserted central catheter covers, allowing patients to shower and bathe while they have a line in situ, for Pevensey Day Unit.	£811
Equipment for Parkinson's 'Speak Out!', East Sussex Speech and Language Therapy Service for Adults programme.	£685
Relief for women suffering the short-term and long-term effects of pelvic radiotherapy on Pevensey Ward.	£650
Twenty bonding sets for mothers of pre-term babies on the Frank Shaw Ward.	£640
Twelve month subscription to 'Daily Sparkle', a dementia friendly daily newspaper/newsletter on the Irvine Unit.	£620
30 footrest covers for the treatment chairs on the Pevensey Day Unit.	£558

Staff Wellbeing

	Amount
Meals for every member of staff working in the Trust on Christmas Day 2023.	£5,000
900 pin badges for colleagues in the Estates and Facilities teams to demonstrate the Trust's support for National Estates and Facilities Celebration Day.	£1,980
A generous donation was received to purchase a table and chairs for the Ophthalmology staff room at Bexhill.	£1,265
Chocolates and biscuits to thank staff across the organisation and improve morale at Christmas.	£1,095
Purchase of tea/coffee/cake and promotional materials for the NHS 75th birthday and NHS Big Tea events.	£1,000
A generous donation by a patient to fund a staff thank you meal.	£900
Support for members of the Speech and Language team to attend the Health Service Journal Awards following a nomination for Patient Safety Collaboration of the Year.	£719
Forty members of staff were able to attend a team building session following a generous donation being made specifically to support staff wellbeing on Glynde Ward.	£645
A generous donation allowed us to purchase staff room chairs for the Surgical Assessment Unit at Conquest Hospital.	£568
Support for three team building/educational days for the Acute Medical Unit team.	£505

Staff Training

	Amount
Group Clinical Supervision for Macmillan Clinical Nurse Specialists.	£8,000
5 bids for Clinical Supervision cost of Macmillan Counsellors – Oncology.	£5,650
Recording device for robotic surgical procedures in Urology at Eastbourne.	£2,738
Cost of supervision groups for Macmillan Counselling Team.	£2,750
Clinical Supervision for Specialist Palliative Care Nursing Team.	£1,440
Support for three members of Pevensey Day Unit Team to attend "Enhance your Oncology Nurse-led Telephone Triage Assessment" course.	£1,077
Funding in support of a Breast Care Service away day.	£1,072
Funding to allow members of staff to attend the European Resuscitation Council conference in Barcelona.	£1,064
Expenses for Emergency Ultrasound Course at the Eastbourne Postgraduate Centre, EDGH.	£1,027
Catering for Community Health and Integrated Care Quality Learning Events.	£976
Staff member expenses in attending the British Association of Cardiac Rehabilitation Conference 2023.	£772
Advanced Life Support course fees for senior staff.	£750
Attendance fee for two staff members to attend the British Association for Cardiovascular Prevention and Rehabilitation Annual Conference.	£670
Expenses for a staff member to attend National Human immunodeficiency viruses Nurses Association Conference 2023.	£638
Support for the Physical Activity and Exercise in the Management of Cardiovascular Disease Part 1 and 2 Course.	£590
Skills for Adjusting Diet and Insulin in East Sussex workshop for Type-1 diabetes patients, venue hire and catering.	£562

6

Fundraiser And Volunteer Achievements



Skydiving

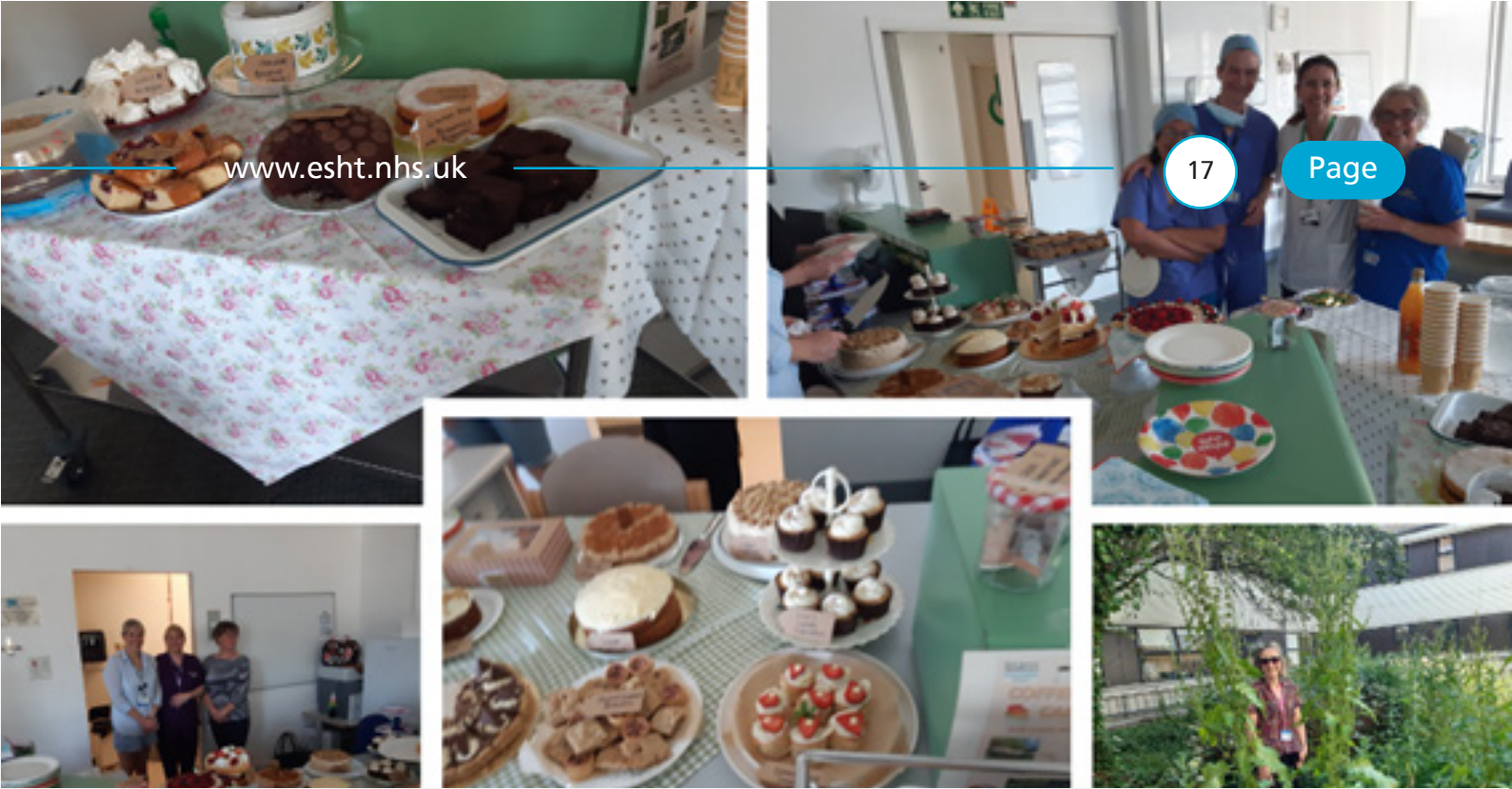
Lola, Emma and Milly Peak raised £900 for Pevensey Cancer Fund to say thank you to the staff on Pevensey Ward for the loving care and treatment given to their father, Aaron, after his terminal cancer diagnosis.



Carol Bratton Bethesden Craft Fair

Carol Bratton sold homemade produce at her local Craft Fair raising £350 for Kipling Ward, Conquest in thanks for the care the staff provided her granddaughter Maddison over a four year period. Carol was pleased to report that Maddison is now a thriving young lady and is doing very well at secondary school and is medication free.





Theatre staff at Conquest

The team organised a cake sale to help raise funds to buy plants and materials during the refurbishment of their ward garden. The cake sale brought in almost £200 in sales and the cakes and buns were all provided by members of staff for free.



Craig Andrew's London marathon

Craig ran the London Marathon and raised £1,420 to thank the Conquest ICU staff for their care and treatment of his wife Ruth during the Covid Pandemic without which he felt Ruth would not have survived.

Craig explained "My wife, Ruth Andrew, was in the Conquest's ICU due to Covid right at the start of the pandemic and was supported by the incredible Critical Care team. She wouldn't be here today without their critical decision making and fantastic care".



**JUDY BEARD
WARD FUND**





The Bates Green Glee for patients of Judy Beard Unit Conquest Hospital



Sponsorship Form

#	Surname	Email or Mobile	Date	Package £	Gifts Made
1					
2					
3					
4					
5					
6					
7					
8					
9					
10					
11					
12					
13					
14					
15					
16					
17					
18					
19					
20					
21					
22					
23					
24					
25					
26					
27					
28					
29					
30					
31					
32					
33					
34					
35					
36					
37					
38					
39					
40					
41					
42					
43					
44					
45					
46					
47					
48					
49					
50					
51					
52					
53					
54					
55					
56					
57					
58					
59					
60					
61					
62					
63					
64					
65					
66					
67					
68					
69					
70					
71					
72					
73					
74					
75					
76					
77					
78					
79					
80					
81					
82					
83					
84					
85					
86					
87					
88					
89					
90					
91					
92					
93					
94					
95					
96					
97					
98					
99					
100					



Haley Bird and friends

Haley Bird, Matron of Judy Beard ran with Hastings Heart and Sole, a gang of local running enthusiasts.

They took part in the Bates Green Gallop, a gruelling 6hr challenge set in the East Sussex countryside along the Cuckmere River.

They collectively ran 234.5 miles and raised over £1,100 for Judy Beard, the local oncology and haematology Unit in Conquest Hospital.

The Unit treats cancer patients and the money raised is for extra support and comforts for the cancer patients in their care.



Dee Daly and Friends

Staff from Cancer Services and Outpatients spent the warmest Saturday of 2023 walking from Hastings Pier to Cooden Beach to raise vitally needed funds for the Trust Cancer Fund.

The team are always looking for ways to raise money for this fund and when the official Sussex wide "Walks for Wards" event was cancelled they decided to go ahead anyway and raised a fantastic sum of over £1,200.

The Cancer Fund is used primarily to support patients who are undergoing treatment for cancer and are in financial need by providing them with small financial grants for specific things such as purchasing fridges and microwaves or simply to help with a weekly shop.





NHS Big Tea 75th Anniversary

The Charity, alongside the Estates Department, organised staff tea parties in each of the hospitals which included an Art Exhibition in the Conquest Canteen. Arts in Healthcare were the beneficiaries of just over £300.

Over 10 Tea parties and Big Tea Events were held throughout the Trust raising over £2,000 for various Funds in the Trust. These included an afternoon Tea Dance put on by the NHS Retirement Fellowship which was attended by over 100 retirees who enjoyed a show put on by the local Lindy Hoppers Dance Group. Their cause was the refurbishment of the Eastbourne District General Hospital Courtyards project for which they collected just over £200.

Staff at 1066 Café, in Conquest Hospital held a day of fun competitions and promotional offers raising over £100.



Karen Manson Chair East Sussex Healthcare NHS Charity

Karen, our Charity Chair, completed a gruelling 16 day walk (190 miles), to raise over £1,000 for the Charity. Karen walked with her sister-in-law and two friends, as they followed the Wainwright's Coast to Coast Walk, starting out in St. Bees on England's west coast in Cumbria and walking to the picturesque fishing village of Robin Hood's Bay on the east coast in Yorkshire.

Karen explained "I planned the trip for June 2020 – but Covid intervened and reminded us how much we rely on our wonderful NHS and the staff behind it. The Coast-to-Coast walk spans the north of England. It is one of the most popular long-distance walks in the UK; it passes through three beautiful National Parks; the Lake District, the Yorkshire Dales and the North Yorkshire Moors. It was a tough trek particularly when taken in one go as we did it, and it was a long walk, evenly spread across 16 days. There were also some pretty steep gradients; and over the course of the walk we had to ascend (and descend) the equivalent height of Mount Everest!

"My grateful thanks to all who have contributed to my NHS fundraising, I have reached 126% of my Just Giving target and there is more to follow."



Reference and Administration Details

Registered Charity Name	East Sussex Healthcare NHS Trust Charitable Funds
Working Name	East Sussex Healthcare NHS Charity
Registered Charity Number	1058599
Registered Address	St Anne's House 729 The Ridge St Leonards-on-Sea East Sussex TN37 7PT
Contact Details	Email: esht.charity@nhs.net Tel: 0300 131 4500
Principle Professional Advisors	Bankers: Lloyds Bank plc 2 City Place Beehive Ring Road Gatwick West Sussex RH6 0PA
	Solicitors: Bevan Britten Kings Orchard 1 Queen Street Bristol BS2 0HQ
	Auditor: Grant Thornton LLP 30 Finsbury Square London EC2A 1AG

● 7

GOVERNANCE



Trustee Arrangements:

East Sussex Healthcare NHS Trust (ESHT) is the sole Trustee of the Charity. The Trustee confirms that they have referred to the Charity Commission's guidance on public benefit when reviewing the Charity's aims and objectives and in planning future activities.

The Charity Committee Members of the Charity during the year, 1 April 2023 to 31 March 2024 were as follows:

Chair:

Karen Manson

Committee Members:

Ama Agbeze

Dr Tom Bate

Angela Colosi

Mike Eastwood

Jaquie Fuller

Richard Milner

Pete Palmer

Paresh Patel

Laura Ransom

Damian Reid



Governing Document

The Charity's governing document is the Model Declaration of Trust as registered with the Charity Commission. This provides that the Trustees shall hold the funds on trust to apply the income and, at their discretion so far as may be permissible, the capital for any charitable purpose or purposes relating to the National Health Service wholly, or mainly, for the services provided by ESHT, Sussex Integrated Care Board (ICB).



Structure, Governance and Management

Under the provisions of the Charities Act 2011, the Charity Commission has agreed that the Charity should be treated as a single Charity for the purposes of Part 4 of the Act for registration and of Part 8 of the Act for accounts.

The Charity had five registered non-trading subsidiary charities as at 31 March 2024:

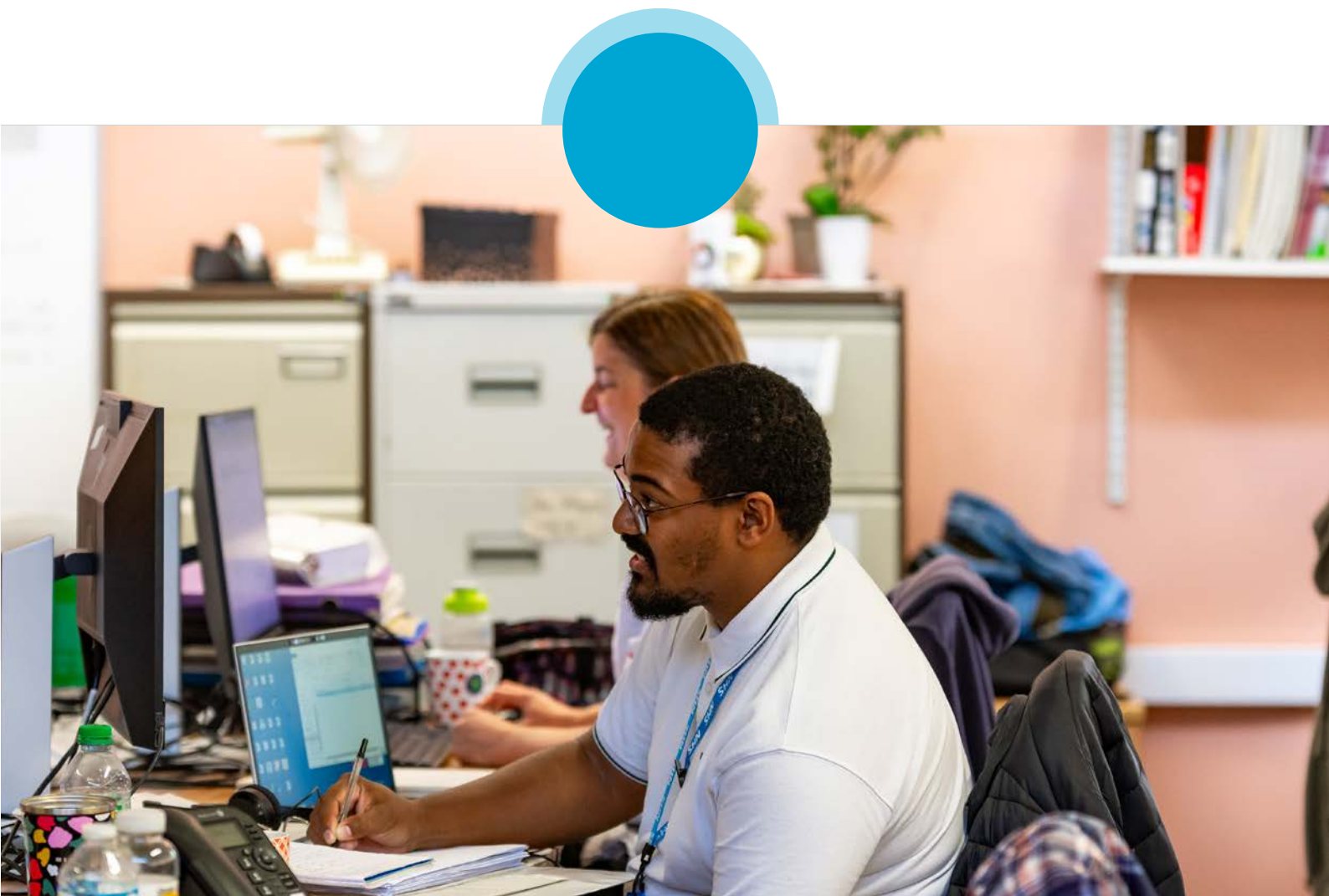
- East Sussex Healthcare NHS Trust Ward Fund;
- East Sussex Healthcare NHS Trust Clinical and Clinical Support Fund;
- East Sussex Healthcare NHS Trust Arts in Healthcare Fund;
- East Sussex Healthcare NHS Trust Education Fund and
- The East Sussex Healthcare NHS Trust (Expendable Funds) Common Investment Fund.

The East Sussex Healthcare NHS Trust (Expendable Funds) Common Investment Fund is the pooling scheme fund for holding all funds.



Charity Committee Meetings

The Committee should meet at least four times a year in order to consider any bids for over £5k and to review the management of the Charity. Reports presented to Trustees include information about income and legacies, expenditure, investment performance, and fund balances. The Committee met five times in 2023/24.



Governance

The Trustee delegates responsibility for the day-to-day management of the charitable funds to the Chief of Staff and the Chief Financial Officer. The Director of Corporate Affairs is responsible for:

- the administration and governance of the funds;
- ensuring that spending is in accordance with the objectives and priorities agreed by the Trustees;
- ensuring that the criteria for spending charitable monies are fully met;
- arranging meetings of the Trustees; and
- management of the Fundraising Manager.



The Chief Financial Officer is responsible for:

- ensuring that full accounting records are maintained;
- ensuring the accounts of Charitable Funds show a true and fair view of the year's activity;
- ensuring there is a system of control for all transactions related to expenditure and income;
- ensuring that there is robust oversight of the accounting records; and
- ensuring the accurate reporting of the in-year position to both Trustees and fund holders.

The principal officer overseeing the day-to-day financial management and accounting for the charitable funds for the accounting period 1 April 2023 to 31 March 2024 was the Chief Finance Officer, Damian Reid.

The principal officer overseeing the day-to-day administration and governance for the charitable funds for the accounting period 1 April 2023 to 31 March 2024 was Board Secretary, Pete Palmer.

8

FINANCE



Financial Management

Expenditure budgets for administration, governance and fundraising costs are approved by the Charity Committee at the start of the financial year and are monitored throughout the year.

The Charity manages its Charitable Activity spending through appointed fundholders for the individual funds. These fundholders manage the funds on a day-to-day basis with agreed authorisation limits, and in accordance with the Trust's Standing Financial Instructions and Orders. Each fund holder receives a quarterly financial statement of their fund which details income, expenditure and fund balances for the period.

The Charity receives expenditure applications from staff throughout the year which are authorised by the fundholder and submitted to the Acting Company Secretary, who reviews all applications to ensure that they meet the objectives of the Charity for quality, value for money and patient benefit. Where an application exceeds £5,000 the fundholder is required to present the application to the Charity Committee for approval. Where any expenditure is considered inappropriate, feedback is given to the fund manager.

The Charity does not directly employ any staff; the Charity enjoys and values the services of volunteers, but is not wholly dependent on them. The Charity is not financially dependent upon the support of any individuals, corporations or specific classes of donors. No funds are held by the Charity on behalf of individuals.



Investments and Investment Policy

Following the completion of an Investment tender, the Investment Portfolio was transferred from CCLA Investment Management Limited and M&G Securities Ltd to Greenbank Investments in 2023/24.

The Charity aims to enhance the value of its funds through effective and responsible investment, whilst mitigating the risk to the capital invested.

The total value of the investment portfolio at 31 March 2024 was £1.98m. The return on investment during the year was an increase of 4% (2022/23 decrease of 5%).



Risk Management

The major risks to which the Charity is exposed have been identified and reviewed with systems established to mitigate them. The Charity relies on and benefits from the financial controls framework of ESHT.

The most significant risks identified were:

1. possible losses from a fall in the value of the investments; and
2. reputational damage leading to a sudden and dramatic fall in donations.

Both risks have been carefully considered and mitigating procedures put in place. Regular review of the investment policy ensures that both spending income. Both income and expenditure are monitored by the Committee on a quarterly basis in order that any trends can be identified at an early stage in order to avoid unforeseen calls on reserves.

Reserves

The Charity hold reserves that are considered to be needed to fund planned expenditure. The Charity acknowledges that charitable donations received need to be spent on patient and staff amenities wherever possible and should not be used to build up reserves.

The reserves of the Charity at 31 March 2024 consisted of £1,838,000 unrestricted funds and £327,000 restricted funds. The Charity regularly reviews all funds held to ensure they remain active and where appropriate, a fund which is inactive for a period greater than 18 months will be closed and the funds transferred to the most relevant quality general fund to ensure that they are spent in a timely manner.



Future plans

In accordance with Charity Commission directives, it is the Charity's continued intention to expend funds for the benefit of both staff and patients.

The Charity continues to work to increase visibility and awareness, supported by the successful launch of the new website during 2023/24. Work to grow an online presence will continue, along with work to improve recognition of the Charity within the Trust.

The charity will continue to build on links with the Friends of Eastbourne Hospital, Friends of Conquest Hospital, The League of Friends of Bexhill Hospital, The Friends of the Rye, Winchelsea and District Memorial Hospital and The League of Friends of Uckfield Community Hospital, using our resources to support the amazing work that they do for the Trust. By working collaboratively we hope that the organisations will be able to provide greater support for the Trust moving forward.

The Charity's Chair, Karen Manson retired in August 2024 and is now replaced by Ama Agbeze.



Statement of Trustee's Responsibilities

The Trustee is responsible for preparing the Charity's annual report and the financial statements in accordance with applicable law and United Kingdom Accounting Standards (United Kingdom Generally Accepted Accounting Practice).

Charity law requires the Trustee to prepare financial statements for each financial year that give a true and fair view of the state of affairs of the Charity and of the incoming resources and application of the resources of the Charity for the year. In preparing those financial statements the Trustee is required to:

- select suitable accounting policies and then apply them consistently;
- observe the methods and principles in the Charities SORP FRS 102;
- make judgements and accounting estimates that are reasonable and prudent;
- prepare the financial statements on the going concern basis unless it is inappropriate to presume that the Charity will continue in business; and
- ensure the financial statements comply with the Trust Deed.

The Trustee is responsible for keeping accounting records that are sufficient to show and explain the Charity's transactions and disclose with reasonable accuracy at any time the financial position of the Charity and enable them to ensure that the financial statements comply with the Charities Act 2011 and regulations made thereunder. They are also responsible for safeguarding the assets of the Charity and hence for taking reasonable steps for the prevention and detection of fraud and other irregularities.

Approved by the Charity Committee on behalf of the Corporate Trustee on 29 January 2025 and signed on their behalf by:

Signed:

Ama Agbeze
Chair



9

INDEPENDENT EXAMINER'S REPORT TO THE CORPORATE TRUSTEE OF EAST SUSSEX HEALTHCARE NHS CHARITY



Independent examiner's report to the corporate trustee of East Sussex Healthcare NHS Charity

I report on the accounts of East Sussex Healthcare NHS Charity (the "charity") for the year ended 31 March 2024, which are set out on pages 38 to 51.

Independent examiner's statement

In connection with my examination, no matter has come to my attention:

- which gives me reasonable cause to believe that in any material respect, the requirements:
 - to keep accounting records in accordance with section 130 of the Charities Act 2011;
 - to prepare accounts which accord with the accounting records; and
 - to comply with the applicable requirements concerning the form and content of accounts set out in the Charities (Accounts and Reports) Regulations 2008

have not been met, or

- to which, in my opinion, attention should be drawn in order to enable a proper understanding of the accounts to be reached.

Basis of independent examiner's statement

My examination was carried out in accordance with the general Directions given by the Charity Commission. An examination includes a comparison of the accounts with the accounting records kept by the charity. It also includes consideration of any unusual items or disclosures in the accounts and seeking explanations from you as corporate trustee concerning any such matters. The procedures undertaken do not provide all the evidence that would be required in an audit, and consequently no opinion is given as to whether the accounts present a 'true and fair' view and the report is limited to those matters set out in the statement above.

Respective responsibilities of corporate trustee and examiner

The charity's corporate trustee is responsible for the preparation of the accounts. The charity's trustee considers that an audit is not required for this year under section 144(2) of the Charities Act 2011 and that an independent examination is needed.

It is my responsibility to:

- examine the accounts under section 145 of the Charities Act 2011;
- to follow the procedures laid down in the general Directions given by the Charity Commission under section 145(5)(b) of the Charities Act 2011; and
- to state whether particular matters have come to my attention.

Your attention is drawn to the fact that the charity's trustees have prepared the charity's accounts in accordance with the Statement of Recommended Practice 'Accounting and Reporting by Charities: Statement of Recommended Practice applicable to charities preparing their accounts in accordance with the Financial Reporting Standard applicable in the UK and Republic of Ireland (FRS 102) (effective 1 January 2019) issued in October 2019 in preference to the Statement of Recommended Practice 'Accounting and Reporting by Charities: Statement of Recommended Practice (revised 2005)' issued in April 2005 which is referred to in the Charities (Accounts and Reports) Regulations 2008 but has been withdrawn. I understand that the charity's trustee has done this in order for the charity's accounts to give a true and fair view in accordance with United Kingdom Generally Accepted Accounting Practice effective for reporting periods beginning on or after 1 January 2019.

Use of this report

This report is in respect of an examination carried out under section 145 of the Charities Act 2011. This report is made solely to the charity's corporate trustee, as a body, in accordance with the regulations made under section 154 of the Charities Act 2011. My work has been undertaken so that I might state to the charity's trustee those matters I am required to state to them in an independent examiner's report and for no other purpose. To the fullest extent permitted by law, I do not accept or assume responsibility to anyone other than the charity and the charity's trustee as a body, for my work, for this report, or for the opinions I have formed.

John Paul Cuttle

John Paul Cuttle, CPFA

Grant Thornton UK LLP
Chartered Accountants

London
29 January 2025

Statement of Financial Activities for the year ended 31 March 2024

	Note	2023/24	2023/24	2023/24	2022/23
					Restated Total Funds
		Unrestricted Funds	Restricted Funds	Total Funds	
		£000	£000	£000	£000
Income and endowments from					
Donations	2.1	68	47	115	47
Legacies	2.2	23	-	23	18
Charitable activities	2.3	23	-	23	43
Total income		114	47	161	108
Expenditure on Charitable activities					
Patient welfare		(66)	(2)	(68)	(65)
Funding for staff posts and services		(8)	(10)	(18)	(33)
Staff welfare		(48)	(52)	(100)	(166)
Purchase of equipment		(55)	-	(55)	(83)
Spend on charitable activities		(177)	(64)	(241)	(347)
Fundraising		(3)	(3)	(6)	(1)
Transfer of funds		(75)	(3)	(78)	(37)
Total expenditure	3&4	(255)	(70)	(325)	(385)
Net gains/(losses) on investments	7.1	83	-	83	(112)
Net movement in funds	6	(58)	(23)	(81)	(389)
Reconciliations of funds					
Fund balances brought forward at 1 April		1,896	350	2,246	2,635
Fund balances carried forward at 31 March		1,838	327	2,165	2,246

Balance Sheet as at 31 March 2024

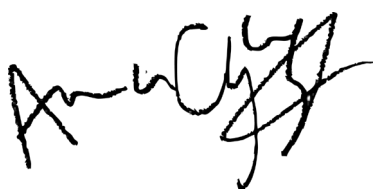
	Note	2023/24	2023/24	2023/24	2022/23
					Restated Total Funds
		Unrestricted Funds	Restricted Funds	Total Funds	
		£000	£000	£000	£000
Non-current assets					
Investments	7	1,858	117	1,975	2,242
Total non-current assets		1,858	117	1,975	2,242
Current assets					
Cash and cash equivalents		90	261	351	139
Total current assets		90	261	351	139
Liabilities					
Creditors falling due within one year	9	(110)	(51)	(161)	(135)
Net current liabilities		(20)	210	190	4
Total net assets		1,838	327	2,165	2,246
Funds of the Charity					
Unrestricted		1,838	-	1,838	1,896
Restricted		-	327	327	350
Total funds	10	1,838	327	2,165	2,246

The notes at pages 41 to 51 form part of these accounts.

Approved and authorised for issue by the Trustees on 29 January 2025 and signed on their behalf.

Ama Agbeze
Chair
Date: 29-01-2025

Damian Reid
Chief Financial Officer
Date: 29-01-2025




Statement of Cash flows for the year ended 31 March 2024

	Note	2023/24	2022/23
			Restated Total Funds
		Total Funds	
		£000	£000
Cash flows from operating activities:			
Net expenditure for the reporting period		(81)	(389)
Adjustments for:			
(Gains)/losses on investments	7.1	(83)	112
(Increase)/decrease in debtors		-	-
Increase/(decrease) in creditors		26	16
Net cash used in operating activities		(138)	(261)
Cash flows from investing activities			
Proceeds from sale of investments		350	-
Net cash provided by investing activities		350	-
Change in cash and cash equivalents in the reporting period		212	(261)
Cash and cash equivalents at 1 April		139	400
Cash and cash equivalents at 31 March		351	139

Notes to the Accounts

1. Accounting Policies

1.1. Accounting Convention

The financial statements have been prepared under the historic cost convention, as modified for the revaluation of certain investments at market value. The financial statements have been prepared in accordance with the Statement of Recommended Practice applicable to charities preparing their accounts in accordance with the Financial Reporting Standard applicable in the UK and Republic of Ireland (FRS 102) and the Charities Act 2011, and UK Generally Accepted Accounting Practice as it applies from 1 January 2015.

The Trust constitutes a public benefit entity as defined by FRS 102.

The Trustee considers that there are no material uncertainties affecting the accounts or the Charity's ability to continue as a going concern and that no subsequent events have been identified which would be material and would require adjustment in the statements to 31/03/2024. The Trustee confirms that they are satisfied that charity reserves are more than sufficient to cover ongoing liquidity needs and pay creditors as they fall due for a period of at least 12 months from the date of signing the statements.

1.2. Income Recognition

All income is recognised and included in full in the Statement of Financial Activities as soon as the following three factors can be met:

- Entitlement: control over the rights or other access to the economic benefit has passed to the Charity.
- Probable: it is more likely than not that the economic benefits associated with the transaction or gift will flow to the Charity.
- Measurement: the monetary value or amount of both the income and the costs to complete the transaction can be measured reliably.

Income from legacies are accounted for as incoming resources once the receipt of the legacy becomes probable. This will be once confirmation has been received from the representatives of the estates that payment of the legacy will be made or property transferred and once all conditions attached to the legacy have been fulfilled or are within the Charity's control to fulfil.

1.3. Expenditure Recognition

The accounts are prepared in accordance with the accruals concept. All expenditure is recognised once there is a legal or constructive obligation to make a payment to a third party.

Grants payable are payments made to third parties (including NHS bodies) in the furtherance of the charitable objectives. They are accounted for on an accruals basis where the conditions for their payment have been met or where a third party has a reasonable expectation that they will receive the grant. This includes grants paid to NHS bodies.

Support and Governance costs are accounted for on an accruals basis and are recharges of appropriate proportions of the ESHT costs, audit or independent examination fees, fund raising consultancy, support for the accounting software and Trustee Indemnity Insurance.

Support and Governance costs are apportioned between the unrestricted funds based on the average fund balance for the year.

1.4. Structure of funds

Where there is a legal restriction on the purpose to which a fund may be put, the fund is classified in the accounts as a restricted fund. Funds where the capital is held to generate income for charitable purposes and cannot itself be spent are accounted for as endowment funds. Restricted funds held within the Trust are disclosed in note 10.

1.5. Investment Fixed Assets

Investments are shown at bid price, which is used to measure fair value for accounting purposes of shares that are traded in an active market. The investments are valued at closing unit prices and the net gains and losses on revaluations and disposals are included on the Statement of Financial Activities.

1.6. Gains and losses

All gains and losses are taken to the Statement of Financial Activities as they arise.

Gains and losses on investments are calculated as the difference between sales proceeds and opening fair value (or date of purchase if later). Unrealised gains and losses are calculated as the difference between fair value at the year end and opening fair value (or date of purchase if later).

1.7. Pooling scheme

An official pooling scheme, the East Sussex Healthcare NHS Trust (Expendable Funds) Common Investment Fund is operated for investments relating to the following funds:

- East Sussex Healthcare NHS Trust Ward Fund
- East Sussex Healthcare NHS Trust Clinical and Clinical Support Fund
- East Sussex Healthcare NHS Trust Education Fund
- East Sussex Healthcare NHS Trust Arts in Healthcare Fund
- The East Sussex Healthcare NHS Trust (Expendable Funds) Common Investment Fund

The Scheme was registered with the Charity Commission on 17 March 1998.

1.8. Related Party Transactions

The Trustee of the Charity is East Sussex Healthcare NHS Trust.

ESHT is the major recipient of funds of the Charity and received grants from the Charity totalling £184,000 during the year (2022/23 £283,000). Refer to note 4.

ESHT charged a management fee to the Charity of £45,000 (2022/23 £45,000) to recharge administrative costs and services provided. Refer to note 4.

The Charity owed ESHT £82,000 at 31 March 2024 (£81,000 31 March 2023). Refer to note 9.

From 5 March 2024 it was agreed that the Eastbourne Emergency Department Fund held by the Charity would be more appropriately administered by ESHT, resulting in a transfer in year of £75,000 to ESHT.

None of the members of ESHT Board, senior staff or parties related to them were beneficiaries of the Charity. None of the Trustees or other Members of ESHT Board has received honoraria, emoluments, or expenses in the year.

1.9. Debtors

Debtors are amounts owed to the Charity. They are measured based on their recoverable amount. Refer to note 8.

1.10. Cash and cash equivalents

Cash at bank and in hand is held to meet the day to day running costs of the Charity as they fall due. Cash equivalents are short term, highly liquid investments.

1.11. Creditors

Creditors are amounts owed by the Charity. They are measured at the amount that the Charity expects to have to pay to settle the debt. There are no amounts which are owed in more than a year.

1.12. Restatement of Prior Period Financial Statement

During the current financial period, management identified the need to restate the accruals in the previously issued financial statements for the year ended 31 March 2023. The accruals recorded in the original financial statements resulted in a misstatement of expenditure on charitable activities.

This arose due to the prior approach to recording accruals, which was based on charitable fund form authorisations. This method caused discrepancies in the timing and magnitude of accrual adjustments, which were not detected during the initial review of the financial data.

The restatement of accrual has been carried out in accordance with Charities: Statement of Recommended Practice (SORP).

The restatement resulted in increase of expenditure in 22/23 by £118k and therefore an overall decrease in net income/(expenditure) by the same amount. The fund balances brought forward was also restated from £2,371k to £2,635k while the closing fund balances as at 31 March 2023 restated from £2,100k to £2,246k. The balance sheet has also been restated to resulting in liabilities from £281k to £135k and corresponding decrease in total funds. The cash flow statement has also been restated to reflect the £119k increase in expenditure and the corresponding accruals.

Total charitable expenditure on analysis of charitable expenditure before allocation of Support and Governance Costs (Note 3) has been restated from £208k to £327k, with Staff welfare total restated from £88k to £147k and funding of staff posts and services total restated from £29k to £26k accordingly. Total allocation of support and governance costs (Note 4) restated from £267k to £385k.

Analysis of Creditors (Note 9), accruals and deferred income restated from £200k to £54k, reflecting total creditors restatement from £281k to £135k.

2. Details of Income

2.1. Donations

	Unrestricted Funds	Restricted Funds	Total 2023/24	Total 2022/23
	£000	£000	£000	£000
Donations from individuals	17	12	29	28
Other trading activities	-	-	-	1
Other	51	35	86	18
Total voluntary income	68	47	115	47

2.2. Legacies

S D Stringer	1	-	1	11
S M Lister	-	-	-	7
P L Ellis	5	-	5	-
J M Bullock	17	-	17	-
Total legacies	23	-	23	18

2.3. Charitable Activities

Training courses	23	-	23	43
Total charitable activities	23	-	23	43

3. Analysis of charitable expenditure before allocation of Support and Governance Costs

	Unrestricted Funds	Restricted Funds	Total 2023/24	Restated Total 2022/23
	£000	£000	£000	£000
Arts in Healthcare	24	1	25	23
Other patients welfare and amenities	21	1	22	28
Patient welfare total	45	2	47	51
Funded staff posts and services	15	10	25	-
Funding for Professional Fees	(10)	-	(10)	26
Funding of staff posts and services total	5	10	15	26
Support to staff training	12	1	13	43
Other support to staff welfare and amenities	19	51	70	104
Staff welfare total	31	52	83	147
Purchase of equipment	37	-	37	65
Fundraising	3	3	6	1
Transfer of Funds	75	3	78	37
Total charitable expenditure	196	70	266	327

All charitable expenditure is classified as grant funded activities.

4. Analysis and Allocation of Support and Governance Costs

	2023/24	2022/23
	Total Funds	Total Funds
	£000	£000
Computer Expenses	4	5
Administration fee	12	12
Total support costs	16	17
Independent Examiner's fee	9	8
Indemnity insurance	1	1
Governance fee	33	33
Total governance costs	43	42
Total support and governance costs	59	59

The support costs and governance costs attributable to charitable activities is apportioned based on the total expenditure for the year for each charitable activity as shown in the table below. The management fee charged to the Charity is made up of the Administration and Governance fee.

	2023/24	2023/24	2023/24	2022/23
	Grant funding of activities	Support and Governance Costs	Total Funds	Restated Total Funds
	£000	£000	£000	£000
Allocation of support and governance costs	Note 3			
Patient welfare	47	21	68	65
Funding for staff posts and services	15	3	18	33
Staff welfare	83	17	100	166
Purchase of equipment	37	18	55	83
Active continuing funds	182	59	241	347
Fundraising	6	-	6	1
Transferred funds	78	-	78	37
Total allocated	266	59	325	385

Total allocated Grant funding of activities consists of Grants paid in year to ESHT £184,000 (2022/23 £283,000), Grants paid to individuals in year £4,000 (2022/23 £6,500) and Transferred funds £78,000 (2022/23 £37,000).

5. Examiner's remuneration

The Independent Examiner's remuneration as per the audit plan of £9,000 including VAT, (2022/23 £8,000, £6,000 for the independent examination for 2022/23 and a catch up from the previous year of £2,040) related solely to the independent examination with no other additional work undertaken. Refer to note 4.

6. Changes in Resources Available for Charity Use

	2023/24			2022/23
	Unrestricted Funds	Restricted Funds	Total Funds	Restated Total Funds
	£000	£000	£000	£000
Net movement in funds for the year	(58)	(23)	(81)	2,354
Net movement in funds available for future activities	(58)	(23)	(81)	(58)

7. Analysis of Investments

7.1. Investments

	2023/24	2022/23
	Total	Total
	£000	£000
Market value at start of period	2,242	2,354
Net gains/(losses) on revaluation and sales	83	(112)
Investment withdrawal	(350)	-
Market value at end of period	1,975	2,242
Historic cost at end of period	1,861	1,170

7.2. Market Value

	31 March 2024	31 March 2023
	£000	£000
Investment Portfolio		
CCLA Investment Management Fixed Interest Funds	-	388
CCLA Investment Management Property Fund	-	634
M&G Securities Fixed Interest Investment Fund	-	37
M&G Securities Equities Investment Fund	-	1,181
Greenbank Investments	1,975	-
Total	1,975	2,240
Cash held as part of the investment portfolio	-	2
Total	1,975	2,242

All units are held within the UK.

8. Analysis of Debtors

As at 31 March 2024 the Charity had no debtors.

9. Analysis of Creditors

	Balance 31 March 2024	Restated Balance 31 March 2023
	£000	£000
Falling due within one year		
Accruals and deferred income	79	54
Other creditors	82	81
Total creditors	161	135

10. Analysis of Funds

10.1.

	Balance 31 March 2024	Income	Expenditure	Transfers	Gains and Losses	Restated Balance 31 March 2023
	£000	£000	£000	£000	£000	£000
Unrestricted funds	1,838	114	(180)	(75)	83	1,896
Arts in Healthcare	2	1	(1)	-	-	2
Bladder Cancer ID and Prediction Project	-	4	(4)	-	-	-
Conquest Courtyards	10	-	-	-	-	10
Conquest Equipment	-	-	-	-	-	-
COVID - Deaf App	10	-	-	-	-	10
COVID - General	27	-	-	-	-	27
COVID - Nursing Fund	2	-	-	-	-	2
COVID - Sunflower Scheme	1	-	-	-	-	1
COVID - Trauma Therapist	23	-	(51)	-	-	74
COVID - TRiM Training	16	-	-	-	-	16
COVID - What Matters to You	-	-	-	-	-	-
Diabetes Inpatient Specialist Nurses	-	-	(1)	(3)	-	4
EDGH Scanning Equipment for Intensive Care and Radiology	145	-	-	-	-	145
Kipling Music	-	-	(1)	-	-	2
Lewes Victoria Hospital	14	-	-	-	-	14
Maternity Bereavement Suite	22	12	-	-	-	10
NHSCT Development Project	21	30	(9)	-	-	-
Pooja Sharma Memorial	2	-	-	-	-	2

Workspace Project	-	-	-	-	-	-
Youth Volunteering Project	31	-	-	-	-	31
Total Restricted Funds	327	47	(67)	(3)	-	350
Total Funds	2,165	161	(247)	(78)	83	2,246

10.2. Details of the Restricted Income Funds

Name of fund	Description
Arts in Healthcare	The promotion of the initiative for the provision of Arts in Healthcare
Bladder Cancer ID and Prediction Project	To create a specialised training mobile website to accelerate bladder cancer identification and predicting correlated pathology
Conquest Courtyards	The fund held for the benefit of the Conquest courtyards
Conquest Equipment	The fund held for the purchase of equipment at Conquest Hospital
COVID - Deaf App	The development of an App for deaf users
COVID - General Fund	To enhance the wellbeing of NHS Staff, volunteers and patients impacted by COVID-19
COVID - Nursing Fund	To enhance the wellbeing of staff nurses
COVID - Sunflower Scheme	The project to promote sunflower lanyards, which demonstrate when someone has a hidden disability
COVID - Trauma Therapist	To support trauma therapy for NHS staff
COVID - TRiM Training	This is a trauma-focused peer support system designed to help people who have experienced a traumatic, or potentially traumatic, event
COVID - What Matters to You	To support staff through Covid 19 and beyond – rest areas/staff room
Diabetes Inpatient Specialist Nurses	To support UK Diabetes Inpatient Specialist Nurses Project
EDGH Scanning Equipment for Intensive Care and Radiology	The funds held for the purchase of scanning equipment for Intensive Care and Radiology at Eastbourne District General Hospital
Kipling Music	The fund held to provide interactive music sessions to Kipling Ward
Lewes Victoria Hospital	The fund held for the benefit of Lewes Victoria Hospital
Maternity Bereavement Suite	The fund held for the refurbishment of the Maternity Bereavement Suite
NHSCT Development Project	NHS Charities Together Development Grant to aid Communications, branding, marketing and fundraising
Pooja Sharma Memorial	To commemorate staff member Pooja Sharma
Workspace Project	To enhance staff facilities and workspaces
Youth Volunteering Project	The fund held for the development of youth volunteering opportunities in East Sussex

11. Funding Commitments

As at 31 March 2024 the Trustees had not made commitments other than those shown as creditors, note 9.

10

WAYS IN WHICH TO SUPPORT OUR CHARITY

There are many ways you can support our Charity

Donations can be made in the following ways:

Direct into bank account

Bank: Lloyds Bank

Sort code: 30-92-86

Account number: 00460039

Account name: East Sussex Healthcare NHS Trust Charitable Fund

Reference: Please state the General Fund

By post

Cheque to East Sussex Healthcare NHS Charity

Please write on the back of the cheque which fund you would like to donate to, e.g. General Fund, and send to:

Charitable Funds
St Anne's House
729 The Ridge
St Leonards-On-Sea
East Sussex
TN37 7PT

By a donation on our 'Just Giving' site

www.justgiving.com/esht

As well as making a general donation, you can also open a page in celebration of and in memory of a loved one. If you are a group or an organisation who is interested in raising money on behalf of the Charity, we would love to hear from you too.

For more information and for support if you are holding your own event, please contact our charity team:

esht.charity@nhs.net

Gift Aid

Gift Aid is a simple, government initiative which allows us to increase the value of your donations at no extra cost to you. For every pound you give to us we can get an extra 25 pence from HM Revenue and Customs helping your donation go further to help patients and their families. The only condition is that you are a UK tax payer. When making a donation simply let us know that you wish to Gift Aid your donation, to do this all we need is your name and address.



Contact

Conquest Hospital

The Ridge, St Leonards-on-Sea, East Sussex,
TN37 7RD
0300 131 4500

Eastbourne District General Hospital

Kings Drive, Eastbourne, East Sussex,
BN21 2UD
0300 131 4500

Bexhill Hospital

Holliers Hill, Bexhill-on-Sea, East Sussex,
TN40 2DZ
0300 131 4500

Rye, Winchelsea and District Memorial Hospital

Peasmarsh Road, Rye, East Sussex,
TN31 7UD
(01797) 224499



esht.nhs.uk



[X.com/ESHTNHS](https://twitter.com/ESHTNHS)



facebook.com/ESHTNHS