

**EY UP!**

**CHARITY**

**ANNUAL REPORT  
AND ACCOUNTS  
2023/24**



Registered Charity No. 1055931

*Supporting the work of*



**South West  
Yorkshire Partnership**  
NHS Foundation Trust

# CONTENTS

## 1. TRUSTEE REPORT

|  |         |
|--|---------|
| Introduction .....                         | Page 3  |
| Objectives and activities .....            | Page 3  |
| Achievements and performance .....         | Page 4  |
| Creative Minds .....                       | Page 10 |
| Spirit in Mind .....                       | Page 17 |
| Mental Health Museum .....                 | Page 20 |
| Structure governance and management .....  | Page 31 |
| Reference and administrative details ..... | Page 33 |
| A big thank you .....                      | Page 34 |

## 2. ACCOUNTS

|   |         |
|---|---------|
| Statement of trustee responsibilities .....                     | Page 35 |
| Independent examiners' report on the financial statements ..... | Page 36 |
| Financial statements .....                                      | Page 38 |



Cricket match organised in aid of EyUp! raised over £500

# TRUSTEE REPORT

## INTRODUCTION

The corporate trustee presents the EyUp! and its linked charities annual report, together with the financial statements for the year ended 31 March 2024.

The annual report and accounts for the year ended 31 March 2024 have been prepared in accordance with the Charities Act 2022 and the Charities (Accounts & Reports) Regulations 2008.

These accounts are presented with the lead charity EyUp! followed by the three linked charities of Creative Minds, Spirit in Mind and the Mental Health Museum.

## OBJECTIVES AND ACTIVITIES

EyUp! exists to benefit the service users of South West Yorkshire Partnership NHS Foundation Trust (the Trust) across Barnsley, Calderdale, Kirklees and Wakefield. Our funds are not used to support NHS services but to enable us to provide extras above and beyond normal NHS funding.

These can be extras for inpatient ward areas, such as games and activities, equipment for visiting rooms, resources for sports or creative activities, trips for service users or funding for community groups.

Our objectives as set out in the Trust Deed are:

*FOR ANY CHARITABLE PURPOSE OR PURPOSES RELATING TO THE NATIONAL HEALTH SERVICE WHOLLY OR MAINLY FOR THE SERVICES PROVIDED BY SOUTH WEST YORKSHIRE PARTNERSHIP NHS FOUNDATION TRUST*

During the year the charity:

- Awarded funding of £71k for projects to be spent on the objectives of the charity with designated fund holders spending £15k from individual funds. These projects will benefit over 8,000 staff, volunteers, service users and carers across the Trust.
- Continued to build on our staff connections by attending face to face events including Trust welcome events, network events and meetings.
- Held our first EyUp! Fest which raised over £2,000.
- Raised the profile of EyUp! on social media by creating case studies and good news stories.
- Created awareness videos for UK Charity Week.
- Increased the capacity of the fundraising team thanks to the development grant funding from NHS Charities Together.

# ACHIEVEMENTS AND PERFORMANCE

## GRANT EXPENDITURE

During the year, the committee approved £71k funding for 100 projects to be spent on the objectives of the charity (22/23 £56k on 55 projects), with designated fund holders spending an additional £15k (22/23 £13k). These projects will benefit over 8,000 staff, volunteers, and service users across the Trust. **Below are examples of the projects supported:**

EyUp! awarded funds to **The Exchange Recovery College, Barnsley** to buy utensils for their new cooking group sessions.

Learners at the college wanted guidance on making simple economical meals and were keen to take part in a cooking group. Thanks to EyUp! they received nearly £300 to buy kitchen essentials like pans, knives and cooking utensils to support the launch of their 'cooking corner' group.

'Cooking corner' takes place every six weeks and has given learners the opportunity to learn new skills and techniques for cooking. They can also then take their food home. Learners have also been able to socialise with others on the course, sharing ideas and skills with their peers.

Samantha Hill, community supporter at The Exchange Recovery College commented:

*SERVICE USERS HAVE BENEFITED FROM LEARNING TO COOK MEALS IN A SUPPORTIVE AND FRIENDLY ENVIRONMENT. THERE IS LAUGHTER AND JOY DURING THE SESSIONS AND PEOPLE CAN MAKE FRIENDS WITH OTHERS.*



Samantha Hill used EyUp! funds to support cooking group sessions at The Exchange Recovery College

The **community learning disability team in Wakefield**, with support from EyUp! charity, hosted two events during Learning Disability Week to promote their service to their local community.

£200 of funding was awarded to the team to help provide refreshments and resources for the events so that service users, their carers, family members and social care staff who support people with learning disabilities could attend. The events were held at Agbrigg and Belle Vue Community Centre, Wakefield and The Hut, Airedale, and helped raise awareness of the team, the service offer, and how people can access the service in Wakefield.

Deborah Gittins, strategic health facilitation lead in the community learning disability team, said

**“THE EVENTS WERE A HUGE SUCCESS, AND WE HAD THE OPPORTUNITY TO SPEAK TO PEOPLE IN THE COMMUNITY AND RAISE AWARENESS ABOUT OUR SERVICE.”**



Catherine Horbury, Peer support worker and Deborah Gittins, Strategic health facilitator attended the Learning Disability Weeks to promote the service in their community

Children and families in Barnsley were able raise awareness of epilepsy thanks to funding from EyUp! charity. £300 was awarded to the **paediatric epilepsy service in Barnsley** who used the funds to mark Purple Day, an international day to raise awareness of epilepsy. The team wanted to share their enthusiasm with the children of Barnsley to bust myths and raise children’s confidence in managing their condition.



Epilepsy nurse specialist Sharron Hoyle said:

*TAKING PART IN THE EVENT HELPED TO RELIEVE ANXIETIES AND MAKE OUR CLINICS A HAPPY PLACE TO BE FOR PATIENTS, FAMILIES AND STAFF WHICH WE FEEL WILL CONTINUE OVER THE COMING MONTHS. IT ALSO HELPED TO BOND TEAMS WITH OUR PARTNERS AT BARNSLEY HOSPITAL AND THE PATIENTS WERE VERY HAPPY TO HAVE BEEN A PART OF IT.*



Service users and staff celebrating #PurpleDay

**Newhaven at Fieldhead** was awarded £275 to start a fishing group. A staff member said: “Thank you so much for the funding of this equipment, fishing is not something I particularly have done in the past or know much about, but I do know it is very popular with our service users, many having done it growing up and having fond memories of. It is a very relaxing environment and gives them much-needed respite from the sometimes high stimulus environment of mental health wards. A great way to engage with service users therapeutically with a more gentle outdoor activity other than more physical sports and gardening for example.”



Newhaven service users enjoying a fishing session

Projects have continued to be funded in [Kirklees](#) to tackle health inequalities following on from funding from NHS Charities Together. This included £960 to [Umbrella Yoga](#), who hosted sessions in collaboration with the Age Well Hope Café to support people who have suffered a bereavement, many of whom have become isolated and experience poor mental health.



Umbrella Yoga session

## FUNDRAISING

We would like to thank corporate companies, members of staff and the public for taking part in events and fundraising for us. Highlights from 2023/24 include:

- Income continuing from the EyUp! lottery £36k
- The first EyUp! Charity Fest held at Venue 23 in Wakefield raising £2.1k
- A charity bike ride held in conjunction with Stainborough Rotary Club raising £1.5k
- Big Tea events organised and supported across our communities raising £3.2k
- Community fundraisers running, cycling, walking, skydiving and holding events for us.

EyUp! employ a fundraising manager who coordinates the in-house events and supports individuals who want to raise funds for EyUp!. EyUp! does not use professional fundraisers or involve commercial participants.

No direct marketing was undertaken in 2023/24. This would be undertaken by the fundraising manager.

EyUp! is a member of the Fundraising Regulator and as such follows the Code of Fundraising Practice. Any individual raising funds for EyUp! has an agreement to sign beforehand. No complaints were received in 2023/24 in respect of fundraising activities of EyUp! (none in 2022/23).



Peter raised over £3k for The Poplars in memory of the care given to his wife





Charity bike ride with Stainborough Rotary Club



The Big Tea event at Fieldhead, supported by Wakefield Trinity and Morrisons as well as our fantastic volunteers

## PLANS FOR THE FUTURE

The trustee approved plans in March 2024 which will enable the charity to implement ideas and projects that will support the charity to grow further. Key priorities for 2024-25 include:

- Building the profile of EyUp!
- Sharing impactful case studies of projects funded by EyUp!
- Growing and strengthening income streams and our donor pool



Creative Minds®

**Creative Minds was set up in 2011 to support the development and delivery of creative arts, sports, recreation, and leisure-based projects to improve the lives of people who use Trust services.**

Creative Minds developed into a charity hosted by South West Yorkshire Partnership NHS Foundation Trust in 2015 with over 120 community-based creative partners across Barnsley, Calderdale, Kirklees and Wakefield. These projects offer opportunities for people who use/have previously used Trust physical and mental health services (including Yorkshire and Humber forensic secure services) to build confidence, learn new skills and develop their talents. Creative Minds know that the context in which people live their lives is the most important determinant of life expectancy, and the ambition is to make sure that every person experiencing health issues in our Trust has an opportunity to engage with meaningful activities in their community and achieve their potential.

Many people readily engage with the NHS and Creative Minds activities are complementary to the service offer. However, for people who avoid using services, reject their diagnosis, and/or disagree with a medical approach, Creative Minds offers complementary and alternative approaches in the community. Creative Minds can get alongside individuals who use services and support them to connect with meaningful activities in their communities and neighbourhoods that help individuals to regain, hope, meaning and purpose in their lives.

In 2023 Creative Minds benefitted from extra funding from the Trust, achieving record numbers of projects developed and beneficiaries. Most partners received uplifts to their project funding, which enabled them to expand and develop their offer to people who use Trust services and other vulnerable people in our communities.

A significant achievement in 2023 was the work done with Kirklees Year of Music for their health and wellbeing strand, co-funding and commissioning 16 wide-ranging projects to directly benefit 2,300 people. There have been many highlights to this work throughout the year with projects and approaches being shortlisted for a special 'Music and Culture for Wellbeing' award in the Northern Music Awards. Kirklees Year of Music gave people who use services locally many ways to engage in music and this work was enhanced with support from our creative practitioners on wards and in the community. The projects were delivered with many different demographic groups and with a wide range



Creative Minds®

of health needs in mind. Creative Minds sourced £81.5k in funding which was matched by £105K from partners who delivered the projects.

Another highlight of the year was a conference, held in partnership with the University of Huddersfield and hosted at the prestigious Oastler building on the campus, to celebrate 10 years of Creative Minds. Throughout the celebration, guest speakers shared their experiences and thoughts of why creative approaches can play an important part in healthcare and a person's recovery. Attendees took part in creative taster sessions which included crafting, performance, writing and activities such as yoga and dance. People also took part in conversation forums about how people with lived experience are a key part of the creative approach to mental health and wellbeing. Local groups also demonstrated how creativity is helping people they work with, including Hoyland Community Choir, Eden's Forest CIC and Heavy Metal Therapy group. It was lovely to welcome over 100 attendees: people who attend projects, partners and staff to reflect on key achievements from the past 10 years and look at visions for the future. We'd like to thank all those who joined us.

In September 2023 a tournament was organised to mark the relaunch of the Good Mood Football League (GMFL). The tournament was organised in partnership with West Riding County Football Association (WRCFA) and took place at their training ground in Rothwell. The relaunch tournament was a very symbolic for the GMFL, which has not been able to carry out its regular fixtures since Covid restrictions in 2020. Six teams took part in the tournament, all supported by NHS and community health staff from South and West Yorkshire. The day felt like a long time coming which made it even more joyous and a real special occasion.

Work continues to explore how to develop and package the Creative Minds model so that it could help other organisations to follow. We are working with the University of Huddersfield through Accelerated Knowledge Transfer Partnership (AKTP) to establish the feasibility of these developments. The AKTP has been successful in identifying core aspects and ideological concepts about Creative Minds that are seldom seen within this space, as well as identifying future steps that enhance their offer.

This research shows Creative Minds has the potential to create real and meaningful change within the mental health space, creative sector and beyond; however external organisations and potential partnerships must become



Creative Minds®

receptive to, or prepare to consider and accept, a new method of recovery to bring around change.

Further developments that support this work is a formal partnership with Implementing Recovery through Organisational Change (ImROC). Creative Minds will provide a creative community development element to the ImROC offer which works both nationally and internationally. A briefing paper has been developed that organisations could choose as part of broader package. ImROC have massive reach around the world and this is a real opportunity scale up the Creative Minds approach. Work will start on this locally with Creative Wakefield, where Creative Minds has been invited to be the health lead for this pioneering approach. Other conversations are happening with other local Trusts about how we can support similar developments in their organisations.

Finally one of Creative Minds' first projects, the caring garden at Fieldhead, was submitted to the national Building Better Healthcare Awards. We were very proud to be given the very special Patient Choice Award, which is awarded to projects that have the biggest impact on patient care. The caring garden is a special place that people on the Fieldhead site really value, and it was a pleasure to get this national recognition.

Big thanks to everyone who has supported us over the last 12 months and we look forward to your continued support.

**CREATIVE MINDS SUPPORTED 40 PROJECTS IN 2023/24 WITH 80 PARTNERS, DELIVERING OVER 22,000 CONTACTS WITH SERVICE USERS (2022/23 59 PROJECTS WITH 102 PARTNERS AND 24,000 CONTACTS). BELOW ARE SOME EXAMPLES.**

### **WAKEFIELD YEW TREE - WAKEFIELD LITFEST**

This was a peer-led project commissioning a portfolio of plays written by talented young playwrights with a love of words. The project was largely completed on 16 September 2023 when all eight of the commissioned plays by Wakefield writers and directed by directors from Wakefield were performed at the Mechanics Theatre as part of a festival of new work. The 14 writers and performers who took part were watched by over 75 people.





Creative Minds®

Partnerships were formed with Wakefield Theatre Royal, Wakefield College, Wakefield Libraries, The Hepworth, Yew Tree Youth Theatre, Hatch, Long Division, Wakefield Museums, and Wakefield and District Housing (WDH) who provided the writers with a creative prompt from their organisation which formed the original inspiration for the plays. Wakefield College also supplied their theatre for the final performance.



Wakefield LitFest performance

## ***BARNSELY YOUNG WRITERS - HIVE***

Barnsley Young Writers is Hive South Yorkshire's hub for young writers aged 14-19. Hive has hubs and projects all over South Yorkshire to support young people aged 14-30 with creative writing mentoring and opportunities.

Barnsley Civic has been the home of Barnsley Young Writers and Hive's Barnsley partner since 2020. Before the pandemic, most of the group were aged around 18-19, but since re-recruiting in February 2022, most recruits are aged 14 -17.

Sessions run every two weeks during term time on Friday nights, with stand-



Creative Minds®

alone sessions in holidays. An average of 12-15 young people attend each session. Most sessions have writing activities delivered by award winning fiction writer Nik Perring, designed to develop different skill sets. The group often take part in writing competitions.

Because the group is based at the Civic, they have the opportunity to take part in other projects, including Teenage Wildlife – a Historic England-funded project exploring 70 years of Barnsley youth culture. Members have also performed their creative writing in front of a sold-out spoken word event at Sheffield Leadmill.

### ***KIRKLEES - THE LAWRENCE BATLEY THEATRE - 'SONG GEET SOUTH ASIAN WOMEN'S CHOIR'***

The aim of the project was to work with the theatre's community ambassador Madiha Ansari to launch a dedicated South Asian women's choir in Kirklees, using song and music to explore and celebrate South Asian heritage. A further objective was to provide a safe creative space for South Asian women, reducing isolation and loneliness and improve mental health and wellbeing.

Delivery included providing a range of tasters (10 in total) across various community venues in Kirklees including libraries serving South Asian communities (Batley, Dewsbury, Greenwood Centre, Heckmondwike) and other venues (Springfield College, 2 canal trips out of Mirfield, Lawrence Batley Theatre)

This was followed by 10 rehearsals based principally at Lawrence Batley Theatre/ Dewsbury Library/Greenwood Centre where new members were integrated into the choir in preparation for the multi-cultural song and dance celebration, Rasm-e-Milan, at Lawrence Batley Theatre. This had 57 direct beneficiaries.

The group are continuing to get enquiries from potential new members. Their plan is to expand the group, run regular rehearsals and develop the skills and confidence of their members. The group continue to get requests to perform. They would like to work towards their own ticketed concert in a small, intimate venue within a year.

Lawrence Batley Theatre plan to continue to support the group with space and other resources and to support the group to secure further funding.



Creative Minds®

## CALDERDALE - CURIOUS MOTION CIC - THE WELLAND ACTIVATOR FOR THE OVER 55s

The Welland Activator for People over 55 was a creative health project consisting of accessible dance and movement activities for, by, and with people aged over 55 in Elland and the lower valley of Calderdale.

This was delivered through:

- 31 'Brews & Grooves' sessions – fun and informal dance sessions followed by a hot drink for people over 55. Sessions ran weekly in Elland throughout the project and were facilitated by local professional dance artist and Curious Motion's artistic director Samantha McCormick, who has been working with older people for over 15 years.
- 7 taster workshops – we visited groups and organisations across the local area to offer taster dance workshops. This included Overgate Hospice, Age UK, The Together Group at Southgate Church, Railway Bridge View, St Andrew's Court (Together Housing), Hamerton Close (Together Housing), and Focus 4 Hope.
- 10 'Welland Walks' – we established a monthly walking group, led by two of Curious Motion's volunteers aged over 55. 'Welland Walks' are accessible and pressure-free walking experiences, finishing with a brew together.

### FEEDBACK INCLUDED:

*"I feel connected, supported and a valued member of the group."*

*"I feel more confident in trying new things and expressing myself due to the sense of solidarity and togetherness that the group has created."*



Creative Minds®

If you feel that the Creative Minds approach could help you to find a creative passion that would improve your health and wellbeing, get in touch at [creativeminds@swyt.nhs.uk](mailto:creativeminds@swyt.nhs.uk) or find more information at [www.creativemindsuk.com](http://www.creativemindsuk.com)

## ***FUTURE PLANS***



Over the next 12 months the aim is to restore the regular Good Mood League fixtures and to encourage practise games inbetween linking up teams in the league and beyond. The aim is to also build on our partnership with WRCFA and restore ongoing partnerships with the charity arms of local clubs such as Huddersfield Town Foundation and Reds in the Community in Barnsley.

We also want to continue working with the University of Huddersfield and IMROC to develop further our options to strengthen our model to develop new partnerships and opportunities for Creative Minds.



**Spirit in Mind (SIM) exists to encourage and support faith based and holistically orientated organisations towards greater engagement with the mental health needs of their local communities, memberships and networks.**

The past twelve months has been one of steady growth with the roll out of a number of projects partnered with faith-based organisations and the continued development of an interfaith training programme on mental health related issues. SIM's pioneering role in championing animal assisted therapies (AAT) within mental health care received further recognition with the completion of an externally funded base on the Fieldhead site. 'The Pad' was opened by Dr Elizabeth Ormerod, chair of the Society for Companion Animal Studies, at a ceremony in December 2023. The Pad is now fully operational with activities taking place on a daily basis.



'The Pad' canine lodge

## **TRAINING AND COMMUNICATION**

- The recently published mental health handbook 'Mental Health, Spirituality and Wellbeing' (Pavilion 2022) contains a chapter on the staff and volunteer training programme developed by the Trust's pastoral and spiritual care team. This reference to SIM's strategy and outreach has continued to support

and raise awareness of SIM's educational and training profile. Over the past year this has included introductory and advanced courses with the Al Balagh Academy on mental health chaplaincy and training events for Trust and other NHS staff and volunteers on understanding Islam.

- One day courses for Muslim women on understanding mental health issues were also successfully run at several locations within the Trust area.
- A day workshop on Christian and Muslim understandings of mental health was held at the Ravensthorpe Community Centre in November 2023 and a similar event is in planning for later in 2024.
- A three-day residential wellbeing event for service users was held in July 2023. Funding has been secured for one or two further events in the coming financial year.
- Offering two day Mental Health First Aid training for faith leaders has continued to be a priority with two courses run at Dewsbury Minster over the past year.
- The USA based bereavement trainer Ted Bowman led a day workshop for over 60 Trust staff and faith leaders: 'Living Well with Ambiguity: Losses, Hopes and Future Stories' in April 2023. The hope is to be able to invite Ted back for further bereavement support related training within the coming year.
- The success of the 'Natural healing: Ecology and wellbeing' conference in March 2023 is being followed up by a further conference on animal assisted therapies' at Fieldhead in July 2024.
- Recently SIM was profiled at a mental health and spirituality event at Halifax Minster, part of the Lenten 'Festival of Faith' programme.

## **FAITH COMMUNITY PARTNERSHIPS**

The year to March 2024 saw continuing service user support partnerships with a number of faith-based organisations including:

- Huddersfield Parish Church
- St Augustine's Centre, Halifax
- St Catherine's Church, Wakefield

- St Bartholemew's Church, Marsden
- Lakeside Creative Arts, Newmillerdam

Funding has been secured and planning is taking place for a further outreach of the partnership working programme in 2024/25.

## FUNDING

SIM's continued development is largely reliant upon the successful sourcing of project funding from grant awarding organisations. Recruitment to a SIM development worker post in the first half of 2024 will provide significantly increased fundraising support.

Earlier awards in 2024 from the Marshall and Viggars Charitable Trust and from EyUp! have funded procurement of canine training equipment and the recruitment and training of a new cohort of canine befrienders. An award of £30,000 from Royal Canin International was received in full over the past year, allowing the completion of an operating base for the service at Fieldhead.



Canine befriender volunteers

The Mental Health Museum (MHM) has been a linked charity since 2014 and is located in the heart of Fieldhead, Wakefield. The museum's extraordinary collection aims to support the empowerment of people; joining people together to combat mental health stigma and prejudice, and promote mental wellbeing. The museum aims to work with its communities to co-create a mindful, knowledgeable and active society.

### ***MUSEUM DEVELOPMENT AND ACTIVITIES***

This year has marked considerable investment in working with the collection, both behind the scenes and in enhancing displays. Work has included cataloguing and repackaging the unique objects in improved storage facilities. More objects have been brought out of store to develop some new themes within the museum. These have included artefacts and photographs to tell the story of the birth of the asylum and objects exploring the experience of working in hospital.

The development of displays has been supported by the expansion of the MHM collecting programme. This included working with the Retreat Hospital in York to safeguard some important items from their site for the future. MHM have been incredibly grateful too for the generous contribution of staff to new object displays and have benefited greatly from their insights into the experience of working in hospitals, including adding to our oral histories of Stanley Royd. MHM has also been continuing to collect and display objects and artworks from individuals with experience of mental health conditions. Working alongside experts by experience the MHM has been able to explore and enhance new themes around labelling, identity, stigma, activism, empowerment and wellbeing. These new displays help open up conversations about mental health and tackle mental health stigma.

Development work has also included fantastic improvements to our outside spaces thanks to the gardening team. This area now provides a welcome quiet space for visitors and also enables us to expand our display with new features including historic objects in our History Garden. These include the plough once used when there was a working farm as part of the hospital estate.



## ENGAGEMENT

Visitor numbers have continued to expand. These have included a considerable increase in group visits from staff, schools and colleges and groups in the community. The MHM has had some encouraging feedback from these visits, including individuals commenting on the importance of a place for safe conversations about mental health:

*"Really interesting. The personal views of the patients really helps connect with their experiences. Thank you for a really informative exhibition."*

*"What a brilliant walk-through history and a display of real experiences of the past. Thank you."*

Work continues to expand our digital presence, including through a new social media campaign called '50 Years, 50 Objects' which marks the beginning of a celebration of 50 years of the Mental Health Museum. It has been wonderful to engage with people across the world in conversations about mental health through heritage objects.



Exploring together our ways to wellbeing with collaged artworks, Heritage Open Days 2023

## EVENTS AND OUTREACH

Our events programme has expanded to explore our stories in new ways. For Heritage Open Days in autumn, people were asked to share ideas around what helped with wellbeing. Staff and visitors explored this theme in collaged artwork that will form part of the display in the museum. MHM was pleased to have contributions from Fieldhead service users and enjoyed expanding our engagement on the wards this year, working alongside our Creative Minds colleagues to provide activities that help form part of the displays in the museum. This year, this has included a lovely display to welcome spring, colourful postcards to celebrate NHS @ 75 and fantastic and thought-provoking work on the theme of remembrance. In the outside spaces this included the continued offer of a wildlife club, exploring birds, bugs and plant life in the caring garden at Fieldhead.

Work continues on initiatives to take our objects and stories out to new audiences. This has included taking objects 'on the road' to engage with audiences at the Creative Minds conference, Leeds Trinity University and at the Arthouse in Wakefield for our legacy project with colleagues at Outside In. The legacy project was devised as an extension to New Dialogues and enabled us to continue to build responses to the collection with artists that have engaged with the museum across the past three years.

The MHM is also delighted to have trialled a first outreach box for schools. This pilot scheme included providing a range of objects and documentation exploring nursing being delivered to a local primary school. The response was great and it has since been rebooked.

Four satellite museum cases are now in place at Baghill House, Drury Lane, Laura Mitchell Health and Wellbeing Centre and the learning and development centre at Fieldhead. The sites introduce themes of food, occupation and recreation at Stanley Royd Hospital and hope to enhance the interest in these waiting rooms along with encouraging people to visit the museum to find out more.

The MHM continues to build partnership links with other heritage organisations and academic bodies to exchange knowledge and develop best practice. MHM co-curated an international conference with the University of Huddersfield: 'Museums and Beyond: Public Histories of Mental Illness in the 21st Century'. This took place on 10 and 11 April 2024 and attracted speakers from around the world.



The museum out and about – satellite display in the Laura Mitchell Health and Wellbeing Centre, Halifax



Exploring the MHM collection with young visitors

## WELLBEING

On Mondays and Fridays MHM continues to host its wellbeing offer. This has delivered activities for people at Fieldhead including the Creative Cuppa Club. In addition, CAB Citizens Advice Wakefield District was awarded funding from the Nova Wakefield District Community Mental Health Provision Fund to work in partnership with the Trust to develop a general outreach service at two locations in the district. Drury Lane and Baghill House now have weekly sessions. Several sessions have been held at the museum.




## ***FUTURE PLANS***



Work has started on potential ideas for the museum development, including possible roles in regional collecting of the material culture of mental health, expanding our space and the offer to people receiving treatment on site. MHM would like to consult staff and service users about what they would like to see from the museum and plan to incorporate this consultation into our Heritage Open Day activities in the autumn.

New projects coming online in 2024/25 include the Arts and Humanities Research Council-funded project Asylum: Refugees and Mental Health alongside the University of Huddersfield and Utrecht University. This project will run from 2024-2027. As part of this bid the museum has been awarded c. £26,000 which includes funding to project manage engagement and exhibition elements. This work will enable us to extend our involvement in the community, meeting one of our key equality impact assessment targets.





# FINANCIAL REVIEW

## HOW WE FUNDED OUR WORK, ACHIEVEMENTS AND PERFORMANCE

In 2023/24, the charities received income of £873k (2022/23 £1,478k) and expended £1,047k (2022/23 £1,149k). At the end of the year the charities had a balance of £1,610k (2022/23 £1,784k).

### **EyUp!**

EyUp! received income of £175k from donations, fundraising, sale of goods, lottery, grants, and interest. This includes:

Donations and trading activities (which include the EyUp! lottery and fundraising events) have increased from £62k (2022/23) to £164k (2023/24). These donations are mainly from staff, service users, carers, relatives, and friends. Interest received has increased from £2k (2022/23) to £11k (2023/24) due to increased interest rates.

Expenditure of £227k was spent on grant making, staff costs, administration fee, and prizes and admin costs relating to the lottery. A wide variety of purchases were funded, ranging in value, and as exemplified in the aforementioned projects.

At 31 March 2024 EyUp! had funds carried forward of £317k, of which £69k is restricted (2022/23 £369k, £79k restricted).

### **CREATIVE MINDS**

Creative Minds received income of £607k, of which £443k was received from the Trust. Other income was from grants of £120k (significant grants include £33k from NHS Charities Together, £25k from BBC Children in Need, £46k from The National Foundation and £9k from University of Huddersfield), interest of £37k and a few small donations.

During the year expenditure of £731k was spent. £341k was on small grants, £384k on staff costs (including staff time on grant projects), £1k on raising funds and £5k on administrative costs.

At 31 March 2024 Creative Minds had funds carried forward of £1,123k (2022/23 £1,247k).

## ***MENTAL HEALTH MUSEUM***

Mental Health Museum received income of £63k, of which £60k was received from the Trust and £3k in interest.

Expenditure of £63k was spent in year. This included £60k on staff costs, and £3k on charitable activities and minimal expenditure administration.

At 31 March 2024 Mental Health Museum had funds carried forward of £99k. (2022/23 £99k)

## ***SPIRIT IN MIND***

Spirit in Mind received income of £28k, of which £10k was received from the Trust, £15k in grants and £3k in interest.

Expenditure of £26k was spent in the year. £10k relates to staff costs, £15k relates to the activities of Spirit in Mind including the canine befriending project, and minimal expenditure on administration.

At 31 March 2024 Spirit in Mind had funds carried forward of £71k (2022/23 £69k).

A wide variety of purchases were funded, ranging in value, and as exemplified in the aforementioned projects.

## ***HOW WE MANAGE THE MONEY***

### ***OUR GRANT MAKING POLICIES***

Grants are made in accordance with charity law, our constitution and the wishes and directions of donors. The charitable funds committee have regard to the Charity Commission for England and Wales's guidance on public benefit and what this means for EyUp! and its linked charities.

### ***EYUP!***

EyUp! makes grants from its unrestricted funds, both general and designated funds. Any applications requesting grants over £5,000 are referred to the charitable funds committee for a final decision.

- General funds – these funds are received with no particular preference expressed by donors. The income generated by the lottery is also received into general funds. On a quarterly basis, bids are invited from all services and wards across the Trust. These are then assessed by a sub-committee of Trustwide clinical and non-clinical staff who award funding based on the application, looking at the benefits of the proposal.
- Designated funds – are established for a particular ward or service. Each fund has a designated fund manager who authorises expenditure from these funds at any time. Finance check that the expenditure is appropriate to the overall purpose of the charity.

### **CREATIVE MINDS**

Creative Minds develops community partnerships to co-fund and co-deliver projects for local people and all the projects are supported on a match-funded basis. The term match- funded refers to the requirement of partners to provide funding of an equal or greater basis for each project.

Creative Minds invites applications for funding for each locality they work in annually. Applications are assessed through locality collectives made up of service users, carers and Trust staff using the Young Foundation community development tool. Where projects show a shortfall, the collectives try to work with the organisation to strengthen the bid. The collectives also look for a balanced portfolio of projects across the Trust districts, considering the types of activity, the client group and the service that will benefit.

### **SPIRIT IN MIND**

SIM only makes grants when appropriate funding for such purposes has been identified.

### **MENTAL HEALTH MUSEUM**

The Mental Health Museum does not award grants.

## **RISK ANALYSIS**

The trustee reviews risk as part of the charity action plan at each meeting and within the business plan. The main risk facing the charities is financial sustainability.

- The EyUp! fundraiser was appointed to mitigate this by being a dedicated resource to increase income through several different funding streams. The effectiveness of this is reviewed at each meeting and success is being achieved. Following the receipt of a development grant from NHS Charities Together in 2022/23, the two additional posts have been successful and were approved by the charitable funds committee to be permanent posts in March 2024.
- The linked charities are revising their strategies and producing clear business plans which will be actioned and monitored to ensure they are sustainable in the future. Work has continued in 2023/2024.
- Inflation and the cost of living has increased. This is having an impact on the amount that people are able to donate to charity and is anticipated to continue to affect donations in 2024/25.

## **OUR INVESTMENT POLICY**

The current policy (agreed in December 2022) is to invest funds in a mix of deposit accounts. The corporate trustee takes a prudent approach to investment and holds the funds in low-risk deposit accounts across various providers.


## **OUR RESERVES POLICY**

Under the guidance of the Charities Commission booklet 'CC19, Charities Reserves' and 'Charity reserves: building resilience', the corporate trustee agreed the following reserves policy, which is reviewed annually.

## **EYUP! RESERVES POLICY**

Funds held by EyUp! that are unrestricted are classed as reserves under Charities SORP (FRS 102).

The charity has a general legal duty to apply charitable funds within a



reasonable time of receiving them. The corporate trustee actively encourages fund managers to spend their funds and encourages staff to bid against the general purpose funds.

The trustee policy is to keep funds to the minimum required to cover approved commitments in the belief that donations are made with the intention and expectation that they will be spent accordingly.

To avoid the risk of the charity’s reserves becoming overdrawn, it is considered prudent to hold a minimum 3 months’ operating expenditure, plus one year’s salary, for the charity team. If the balance fell to this level, then the committee would revise the strategy and plan for the charity.

The reserves currently stand at £149k and are calculated as follows:

|                             |              |
|-----------------------------|--------------|
| Total unrestricted funds of | £248k        |
| Less designated funds       | £99k         |
| <b>Total reserves</b>       | <b>£149k</b> |

The trustee reviews the balances held in designated funds, in accordance with the provisions of the NHS Acts relating to charitable funds, to determine whether these funds are likely to be committed in the near future and the extent to which there is a continuing need identified for any particular designated fund(s). The funds are reviewed on an annual basis and any inactive funds are closed and the balance transferred to general funds.

Expenditure is reviewed quarterly at the charitable funds committee to ensure that the minimum level of reserves is maintained. Reserves are currently slightly higher than the minimum required, it is anticipated that these will reduce further in 2024/25 to be in line with the expected reserves.

**CREATIVE MINDS RESERVES POLICY**

Creative Minds is funded by specific grants for projects and by general contribution by the Trust. Monies given as specific grants are classed as restricted and are excluded from the reserves policy. A minimum of three months’ operating expenditure is held as reserves. A significant proportion of Creative Minds’ expenditure is planned grant expenditure, so if funds are reduced to this level, then plans can be revised.



**MENTAL HEALTH MUSEUM RESERVES POLICY**

The Mental Health Museum is primarily funded by specific grants with small donations by visitors. Monies given as specific grants are classed as restricted and are excluded from the reserves policy. The Trustee has deemed that at this point the charity does not need to hold reserves.

**SPIRIT IN MIND RESERVES POLICY**

Spirit in Mind is primarily funded by specific grants. Monies given as specific grants are classed as restricted and are excluded from the reserves policy. The Trustee has deemed that at this point the charity does not need to hold reserves.

**VOLUNTEERS**

EyUp! and its linked charities would like to thank all the volunteers who have contributed to the charities in 2023/24. This includes being part of the running of the charities and helping make grant funding decisions for Creative Minds. They have all contributed to the success and growth of the charities and the charities continue to be grateful for their help and time.

**AMBASSADORS**

Ambassadors do not have any formal role in the governance of the charity but assist by gaining publicity and raising our profile:

|  |   |  |
|--|---|--|
|  |  |  |
| Ashley Jackson - Painter   | Horatio Clare - Author  | Stephanie Hirst - Broadcaster  |

The charities would like to thank the ambassadors for their continuing support.

# STRUCTURE, GOVERNANCE AND MANAGEMENT

South West Yorkshire Partnership NHS Foundation Trust is the corporate trustee of the charity governed by the law applicable to Trusts, principally the Trustee Act 2000 and the Charities Act 2022.

## CORPORATE TRUSTEE

The corporate trustee comprises the non-executive and executive directors of the board of South West Yorkshire Partnership NHS Foundation Trust and meets quarterly. Non-executive directors are appointed by the governors of the Trust and executive directors are subject to the Trust's recruitment policies. When directors join the corporate trustee, they are introduced to the charity, its objectives, and Charity Commission guidance (CC3).

The members of the corporate trustee have read and had regard to the Charity Commission's guidance on public benefit. They give of their free time freely and do not receive any pay, emoluments, or other financial benefit.

### Those who served on the corporate trustee during the period were as follows:

|  |   |
|--|---|
| Marie Burnham                          | Chair   |
| Mike Ford                              | Non-executive director                            |
| Mandy Griffin                          | Non-executive director                            |
| Erfana Mahmood                         | Non-executive director                            |
| Natalie McMillan                       | Non-executive director                            |
| Kate Quail                             | Non-executive director                            |
| David Webster                          | Non-executive director                            |
| Mark Brooks                            | Chief executive                                   |
| Sue Barton (from 01/07/23 to 17/09/23) | Interim executive director of strategy and change |
| Carol Harris                           | Chief operating officer                           |
| Lindsay Jensen (from 01/03/24)         | Interim director of human resources               |
| Dawn Lawson (from 18/09/23)            | Executive director of strategy and change         |
| Greg Moores (left 01/03/24)            | Chief people officer                              |
| Sean Rayner                            | Executive director of provider development        |
| Professor Subha Thiyagesh              | Chief medical officer                             |

|                               |  |
|-------------------------------|--|
| Darryl Thompson               | Chief nurse and director of quality and professions      |
| Adrian Snarr                  | Executive director of finance, estates and resources     |
| Salma Yasmeen (left 30/06/23) | Director of strategy and change / deputy chief executive |

## CHARITABLE FUNDS COMMITTEE

The corporate trustee is supported in their responsibilities and duties by the charitable funds committee, which meets quarterly. Their duties include managing the Trust's charitable funds in accordance with statutory requirements; ensuring expenditure is in line with the objects of the charities; delegating responsibility for the management of designated charitable funds and the linked charities; fundraising for the charity; ratifying the annual report and accounts; and reviewing the effectiveness of the committee.

### **The members of the charitable funds committee during the period were as follows:**

|  |  |
|--|--|
| Erfana Mahmood (committee chair)               | Non-executive director   |
| Sue Barton (from 01/07/23 to 17/09/23)         | Interim executive director of strategy and change                  |
| Marie Burnham                                  | Chair of the Trust   |
| Mike Ford                                      | Non-executive director   |
| Dawn Lawson (from 18/09/23)                    | Executive director of strategy and change                          |
| Sean Rayner                                    | Executive director of provider development                         |
| Salma Yasmeen (lead executive) (left 30/06/23) | Executive director of strategy and change / deputy chief executive |

All members of the committee are required to undertake suitable training in order to discharge their duties as members of the committee.

The charitable funds committee is supported by the EyUp! operational management group and the linked charities group, both of which report to the committee.

The day-to-day operations of the charitable funds are administered by South West Yorkshire Partnership NHS Foundation Trust.

# ***REFERENCE AND ADMINISTRATIVE DETAILS***

**EyUp!** is registered under the single registered number 1055931.

The governing document is a deed dated 1 April 1996.

**The MHM** is a linked charity registered under number 1055931-12. Its objectives are for any charitable purposes relating to South West Yorkshire Partnership NHS Foundation Trust or relating to the health service by advancing the education of the public on the subject of mental health.

**Creative Minds** is a linked charity registered under number 1055931-13. Its objectives are for any charitable purposes relating to South West Yorkshire Partnership NHS Foundation Trust or relating to the health service by relieving sickness and preserving health and wellbeing; promoting social inclusion for the public benefit by preventing people from becoming socially excluded; relieving the needs of those people who are socially excluded, and assisting them to reintegrate into society.

**Spirit in Mind** is a linked charity registered under number 1055931-14. Its objectives are for any charitable purposes relating to South West Yorkshire Partnership NHS Foundation Trust or relating to the health service by the promotion of racial harmony for the public benefit by advancing education and raising awareness of mental health issues relating to culture and religion, and advancing racial harmony through the provision of cross-cultural activities which enhance health and wellbeing.

## ***HOW TO CONTACT US***

### ***EyUp!***

Fieldhead Hospital  
Ouchthorpe Lane  
Wakefield  
WF1 3SP

### ***EXTERNAL EXAMINER***

GBAC  
Old Linen Court  
83-85 Shambles Street  
Barnsley  
South Yorkshire  
S70 2SB

### ***BANKERS:***

National Westminster Bank  
3 Ropergate  
Pontefract  
West Yorkshire  
WF8 1LH

### ***INTERNAL AUDITORS:***

360 Assurance  
Riverside House  
Bridge Park Road  
Thurmaston  
Leicester  
LE4 8BL

# A BIG THANK YOU

On behalf of the staff and service users who have benefitted from improved services due to donations and legacies, the corporate trustee would like to thank all service users, relatives, carers, members, the general public and staff who have made charitable donations, participated in the lottery, and supported the work of the charities.

## SUPPORT THE WORK OF EyUp!

THANK YOU FOR READING ABOUT THE PROJECTS THAT THE CHARITY HAS SUPPORTED THIS YEAR. THIS CANNOT CONTINUE WITHOUT ONGOING DONATIONS. FOLLOW US ON SOCIAL MEDIA TO STAY UP TO DATE ON ALL THINGS EyUp!.



@EyUpCharity



@EyUpCharity



@EyUpCharity

Visit our website for more information: [www.eyupcharity.org](http://www.eyupcharity.org)

### WHAT COULD YOUR GIFT BUY?

|      |           |   |
|------|-----------|---|
| £1   | COULD BUY | COLOURING PENS FOR AN ART SESSION       |
| £10  | COULD BUY | GAMES FOR A WARD                        |
| £20  | COULD BUY | SEEDS AND PLANTS FOR A GARDENING GROUP  |
| £30  | COULD BUY | BOOKS TO START A WARD LIBRARY           |
| £50  | COULD BUY | ARTS AND CRAFTS MATERIALS               |
| £100 | COULD BUY | A WATER FEATURE FOR A SENSORY GARDEN    |
| £150 | COULD BUY | A DAY TRIP FOR SERVICE USERS            |
| £300 | COULD BUY | A PORTABLE PIANO FOR A WARD             |
| £500 | COULD BUY | START-UP COSTS FOR A NEW ACTIVITY GROUP |

If you would like to donate:

**Through your bank:** Pay direct to the charity donation account.  
Sort code 54-30-64. Account number 42591511.

**By Just Giving:** Donate online at [www.justgiving.com/EyUp](http://www.justgiving.com/EyUp)

**By Cheque:** Please make cheques payable to "EyUp!" and send to  
EyUp! South West Yorkshire Partnership NHS FT, Fieldhead Hospital,  
Block 9, Ouchthorpe Lane, Wakefield, WF13SP.

Signed: 

Name: Marie Burnham

Date: 1 October 2024



## ***STATEMENT OF TRUSTEE RESPONSIBILITIES IN RESPECT OF THE TRUSTEE ANNUAL REPORT AND ACCOUNTS***

The trustee is responsible for preparing the trustee annual report and the financial statements in accordance with applicable law and United Kingdom Accounting Standards (United Kingdom Generally Accepted Accounting Practice), including FRS 102 "The Financial Reporting Standard applicable in the UK and Republic of Ireland".

The law applicable to charities in England and Wales requires the trustee to prepare financial statements for each financial year, which give a true and fair view of the state of affairs of the charity and of the incoming resources and application of resources of the charity for that period. In preparing these financial statements, the trustees are required to:

- select suitable accounting policies and then apply them consistently;
- observe the methods and principles in the Charities SORP;
- make judgments and estimates that are reasonable and prudent;
- state whether applicable accounting standards have been followed; and
- prepare the financial statements on the going concern basis unless it is inappropriate to presume that the charity will continue in business.

The trustee is responsible for keeping proper accounting records that disclose with reasonable accuracy at any time the financial position of the charity and enable them to ensure that the financial statements comply with the Charities Act 2022, the Charity (Accounts and Reports) Regulations 2008 and the provisions of the Trust deed. They are also responsible for safeguarding the assets of the charity and hence for taking reasonable steps for the prevention and detection of fraud and other irregularities.

The trustee is responsible for the maintenance and integrity of the charity and financial information included on the charity's website. Legislation in the United Kingdom governing the preparation and dissemination of financial statements may differ from legislation in other jurisdictions.

# ***INDEPENDENT EXAMINER'S REPORT TO THE CORPORATE TRUSTEE OF EyUp! AND ITS LINKED CHARITIES***

**I report to the corporate trustee on my examination of the financial statements of EyUp! for the year ended 31 March 2024.**

## ***RESPONSIBILITIES AND BASIS OF REPORT***

As the corporate trustee of the charity you are responsible for the preparation of the financial statements in accordance with the requirements of the Charities Act 2011 (the 2011 Act).

I report in respect of my examination of the company's financial statements carried out under section 145 of the 2022 Act. In carrying out my examination I have followed all the applicable directions given by the Charity Commission under section 145(5)(b) of the 2022 Act.

## ***INDEPENDENT EXAMINER'S STATEMENT***

Since the charity's gross income exceeded £250,000 your examiner must be a member of a body listed in section 145 of the 2022 Act. I confirm that I am qualified to undertake the examination because I am a member of ACCA, which is one of the listed bodies.

Your attention is drawn to the fact that the charity has prepared financial statements in accordance with Accounting and Reporting by Charities preparing their accounts in accordance with the Financial Reporting Standard applicable in the UK and Republic of Ireland (FRS 102) in preference to the Accounting and Reporting by Charities: Statement of Recommended Practice issued on 1 April 2005 which is referred to in the extant regulations but has now been withdrawn.

I understand that this has been done in order for financial statements to provide a true and fair view in accordance with Generally Accepted Accounting Practice effective for reporting periods beginning on or after 1 January 2015.

I have completed my examination. I confirm that no matters have come to my attention in connection with the examination giving me cause to believe that in any material respect:

1. accounting records were not kept in respect of the company as required by section 130 of the 2011 Act; or
2. the financial statements do not accord with those records; or
3. the financial statements do not comply with the applicable requirements concerning the form and content of accounts set out in the Charities (Accounts and Reports) Regulations 2008 other than any requirement that the accounts give a true and fair view which is not a matter considered as part of an independent examination.

I have no concerns and have come across no other matters in connection with the examination to which attention should be drawn in this report in order to enable a proper understanding of the financial statements to be reached.

**Victoria Jane Davies**



**FCCA**

**for and on behalf of GBAC Limited**

**Old Linen Court  
83-85 Shambles Street  
Barnsley  
South Yorkshire  
S70 2SB**

**Dated: 1 October 2024**

# ***EYUP! AND LINKED CHARITIES CONSOLIDATED STATEMENT OF FINANCIAL ACTIVITIES FOR THE YEAR ENDING 31 MARCH 2024***

|                                    | Note | Unre-<br>stricted<br>funds | Re-<br>stricted<br>funds | Total<br>Funds<br>2024 | Unre-<br>stricted<br>funds | Re-<br>stricted<br>funds | Total<br>Funds<br>2023 |
|------------------------------------|------|----------------------------|--------------------------|------------------------|----------------------------|--------------------------|------------------------|
|                                    |      | £000                       | £000                     | £000                   | £000                       | £000                     | £000                   |
| <b>Income from:</b>                |      |                            |                          |                        |                            |                          |                        |
| Donations and legacies             | 4    | 72                         | 371                      | 443                    | 25                         | 558                      | 583                    |
| Charitable activities              | 4    | 0                          | 335                      | 335                    | 106                        | 745                      | 851                    |
| Other trading activities           | 5    | 41                         | 0                        | 41                     | 37                         | 0                        | 37                     |
| Investments                        | 7    | 11                         | 43                       | 54                     | 2                          | 5                        | 7                      |
| <b>Total income</b>                |      | <b>124</b>                 | <b>749</b>               | <b>873</b>             | <b>170</b>                 | <b>1,308</b>             | <b>1,478</b>           |
| <b>Expenditure on:</b>             |      |                            |                          |                        |                            |                          |                        |
| Raising funds                      | 8    | (77)                       | (1)                      | (78)                   | (60)                       | 0                        | (60)                   |
| Charitable activities              |      |                            |                          |                        |                            |                          |                        |
| Service user education and welfare | 9    | (89)                       | (880)                    | (969)                  | (44)                       | (1,045)                  | (1,089)                |
| <b>Total expenditure</b>           |      | <b>(166)</b>               | <b>(881)</b>             | <b>(1,047)</b>         | <b>(104)</b>               | <b>(1,045)</b>           | <b>(1,149)</b>         |
| <b>Net income / (expenditure)</b>  |      | <b>(42)</b>                | <b>(132)</b>             | <b>(174)</b>           | <b>66</b>                  | <b>263</b>               | <b>329</b>             |
| Transfers between funds            | 20   | 0                          | 0                        | 0                      | 0                          | 0                        | 0                      |
| <b>Net movement in funds</b>       |      | <b>(42)</b>                | <b>(132)</b>             | <b>(174)</b>           | <b>66</b>                  | <b>263</b>               | <b>329</b>             |
| <b>Reconciliation of funds</b>     |      |                            |                          |                        |                            |                          |                        |
| Total funds brought forward        |      | 290                        | 1,494                    | 1,784                  | 224                        | 1,231                    | 1,455                  |
| <b>Total funds carried forward</b> |      | <b>248</b>                 | <b>1,362</b>             | <b>1,610</b>           | <b>290</b>                 | <b>1,494</b>             | <b>1,784</b>           |

There were no other recognised gains or losses other than those listed above. All activities relate to continuing activities. Restricted funds relate to the linked charities and grants awarded from NHS Charities Together.

# ***EYUP! AND LINKED CHARITIES CONSOLIDATED BALANCE SHEET AS AT 31 MARCH 2024***

| Balance sheet                                 | Note | Unre-<br>stricted<br>funds | Re-<br>stricted<br>funds | Total<br>Funds<br>2024 | Unre-<br>stricted<br>funds | Re-<br>stricted<br>funds | Total<br>Funds<br>2023 |
|---|------|----------------------------|--------------------------|------------------------|----------------------------|--------------------------|------------------------|
|   |      | £000                       | £000                     | £000                   | £000                       | £000                     | £000                   |
| <i>Current assets</i>                         |      |                            |                          |                        |                            |                          |                        |
| Debtors                                       | 16   | 0                          | 1                        | 1                      | 3                          | 142                      | 145                    |
| Cash and cash equivalents                     | 17   | 254                        | 1,417                    | 1,671                  | 291                        | 1,563                    | 1,854                  |
| <b>Total current assets</b>                   |      | <b>254</b>                 | <b>1,418</b>             | <b>1,672</b>           | <b>294</b>                 | <b>1,705</b>             | <b>1,999</b>           |
| <i>Liabilities</i>                            |      |                            |                          |                        |                            |                          |                        |
| Creditors falling due within one year         | 18   | (6)                        | (56)                     | (62)                   | (4)                        | (191)                    | (195)                  |
| Accruals                                      | 18   | 0                          | 0                        | 0                      | 0                          | (20)                     | (20)                   |
| <b>Net current as-<br/>sets (liabilities)</b> |      | <b>248</b>                 | <b>1,362</b>             | <b>1,610</b>           | <b>290</b>                 | <b>1,494</b>             | <b>1,784</b>           |
| <b>Total net assets<br/>or liabilities</b>    |      | <b>248</b>                 | <b>1,362</b>             | <b>1,610</b>           | <b>290</b>                 | <b>1,494</b>             | <b>1,784</b>           |
| <i>The funds of the charity:</i>              |      |                            |                          |                        |                            |                          |                        |
| Restricted income funds                       |      | 0                          | 1,362                    | 1,362                  | 0                          | 1,494                    | 1,494                  |
| Unrestricted income funds                     |      | 248                        | 0                        | 248                    | 290                        | 0                        | 290                    |
| <b>Total charity funds</b>                    |      | <b>248</b>                 | <b>1,362</b>             | <b>1,610</b>           | <b>290</b>                 | <b>1,494</b>             | <b>1,784</b>           |

EyUp! has two active restricted funds: NHS Charities Together, £18k (2022/23 £79k) and Wakefield Place, £51k (2022/23 NIL). The other restricted funds shown here are restricted to the linked charities and are restricted to that charity as described in note 21.

Signed: 

Name: Marie Burnham

Date: 1 October 2024



# ***EYUP! AND LINKED CHARITIES***

## ***CONSOLIDATED STATEMENT OF CASH FLOWS***

### ***FOR THE YEAR ENDING 31 MARCH 2024***

| Statement of cash flows   | Note | Total funds<br>2023/24 | Total funds<br>2022/23 |
|---|------|------------------------|------------------------|
|   |      | £'000                  | £'000                  |
| <b>Cash flows from operating activities</b>                         |      |                        |                        |
| Net cash provided by (used in) operating activities                 | 19   | (237)                  | 557                    |
| <b>Cash flows from investing activities</b>                         |      |                        |                        |
| Interest received   | 7    | 54                     | 7                      |
| Net cash provided by (used in) investing activities                 |      | 54                     | 7                      |
|   |      |                        |                        |
| Change in cash and cash equivalents in the reporting period         |      | (183)                  | 564                    |
| Cash and cash equivalents at the beginning of the reporting period  |      | 1,854                  | 1,290                  |
| <b>Cash and cash equivalents at the end of the reporting period</b> |      | <b>1,671</b>           | <b>1,854</b>           |


## **NOTES ON THE ACCOUNTS**

### **1. ACCOUNTING POLICIES**

#### **(a) Basis of preparation**

The financial statements have been prepared under the historic cost convention, with the exception of investments which are included at fair value. The financial statements have been prepared in accordance with Accounting and Reporting by Charities: Statement of Recommended Practice applicable to charities preparing their accounts in accordance with the Financial Reporting Standard applicable in the UK and Republic of Ireland (FRS 102) (effective 1 January 2015) and the Charities Act 2022.

The trustee has a reasonable expectation that EyUp! and its linked charities have sufficient resources to continue in operational existence for the foreseeable



future being at least 12 months from the date of approval of these financial statements. For this reason, they continue to adopt the going concern basis in preparing the accounts. In making this assertion the trustee has taken several considerations into account. Budgets for 2024/25 have been approved by the trustees which demonstrate that each one has funding streams and expenditure plans in place.

These accounts are prepared and presented in GBP in round thousand pounds (£).

### **(b) Funds structure**

Where there is a legal restriction on the purpose to which a fund may be put, the fund is classified either as:

- A restricted fund; or
- An endowment fund


Restricted funds are those where the donor had provided for the donation to be spent in furtherance of a specified charitable purpose.

Endowment funds arise when the donor has expressly provided that the gift is to be invested and only the income of the fund may be spent. EyUp! and the linked charities currently have no endowment funds.

Those funds which are neither endowment nor restricted income funds are unrestricted income funds. These are sub-analysed between designated (earmarked) funds where the trustee has set aside amounts to be used for specific purposes or which reflect the non-binding wishes of donors, and unrestricted funds which are at the trustee discretion, including the general funds which represent the charities' reserves. The major funds held in each of these categories are disclosed in note 21.

### **(c) Income**

All income is recognised once the charity has entitlement to the resources. It is probable (more likely than not) that the resources will be received, and the monetary value of incoming resources can be measured with sufficient reliability.



When there are terms or conditions attached to income, particularly grants, these terms or conditions must be before the income is recognised as the entitlement condition will not be met until that point. Where the terms or conditions have not met, or uncertainty exists as to whether they can be met, then the relevant income is not recognised in the year but deferred and shown on the balance sheet as deferred income.

Grants are received in both GBP and foreign currency. These are recognised at the rate of exchange at the date of the payment.

### **Income from legacies**

Legacies are accounted for as income either upon receipt or where the receipt of the legacy is probable.

Receipt is probable when:

- Confirmation has been received from the representatives of the estate(s) that probate has been granted;
- The executors have established that there are sufficient assets in the estate to pay the legacy; and
- All conditions attached to the legacy have been fulfilled or are within the charity's control.

If there is uncertainty as to the amount of the legacy and it cannot be reliably estimated, then the legacy is shown as a contingent asset until all the conditions for income recognition are met.

### **(d) Resources expenditure and irrecoverable VAT**

All expenditure is accounted for on an accruals basis and has been classified under headings that aggregate all costs related to each category of expense shown in the Statement of Financial Activities. Expenditure is recognised when the following criteria are met:

- There is a present legal or constructive obligation resulting from a past event;

- It is more likely than not that a transfer of benefits (usually a cash payment) will be required in settlement; and
- The amount of the obligation can be measured or estimated reliably

Irrecoverable VAT is charged against the category of resources expended for which it was incurred.

### **(e) Recognition of expenditure and associated liabilities as a result of grant**

Grants payable are payments made to third parties in the furtherance of the charitable objects of the fund.

Grant payments are recognised as expenditure when the conditions for their payment have been met or where there is a constructive obligation to make a payment.

A constructive obligation arises when:

- We have communicated our intention to award a grant to a recipient who then has a reasonable expectation that they will receive a grant;
- We have made a public announcement about a commitment which is specific enough for the recipient to have a reasonable expectation that they will receive a grant; and
- There is an established pattern of practice which indicates to the recipient that we will honour our commitment

The trustee has control over the amount and timing of grant payments. Consequently, where approval has been given by the trustee and any of the above criteria have been met then a liability is recognised. Grants are not usually awarded with conditions attached. However, when they are then those conditions have to be met before the liability is disclosed.

Where an intention has not been communicated, then no expenditure is recognised but an appropriate designation is made in the appropriate fund. If a grant has been offered but there is uncertainty as to whether it will be accepted or whether conditions will be met, then no liability is recognised but a contingent liability is disclosed.

### **(f) Allocation of support costs**

Support costs are those costs which do not relate to a single activity. These include some staff costs, costs of administration, and internal and external examiner costs. Support costs have been apportioned to charitable activities on an appropriate basis. The analysis of support costs and the bases of apportionment applied are shown in note 12.

### **(g) Fundraising costs**

The costs of raising funds are those costs attributable to raising income for the charity, other than those costs incurred in undertaking charitable activities or the costs incurred in undertaking trading activities in furtherance of the charity's objectives. The costs of raising funds include the prizes paid out in respect of the lottery.

### **(h) Charitable activities**

Costs of charitable activities compromise all costs incurred in the pursuit of the charitable objects of the charity. These costs, where not wholly attributable, are apportioned between the categories of charitable expenditure in addition to the direct costs. The total costs of each category of charitable expenditure include an apportionment of support costs as shown in note 12.

### **(i) Debtors**

Debtors are amounts owed to the charity. They are measured on the basis of their recoverable amount.

### **(j) Cash and cash equivalents**

Cash at bank and in hand is held to meet the day to day running costs of the charity as they fall due. Cash equivalents are short term, liquid investments.

### **(k) Creditors**

Creditors are amounts owed by the charity. They are measured at the amount that the charity expects to have to pay to settle the debt.

Amounts which are owed in more than a year are shown as long-term creditors.



## **(l) Pensions**

EyUp! does not directly employ staff. Staff working on the charity are directly employed by South West Yorkshire Partnership NHS Foundation Trust, with the full costs recharged to EyUp!. As employees of the Trust, they are entitled to join the NHS pensions scheme.

The scheme is subject to a full actuarial valuation every four years, and an IAS 19 accounting valuation every year. The results from the latest valuation as of 31 March 2020 set the employer contribution rate at 23.7% of pensionable pay from 1 April 2024 (previously 20.6%).

The valuation of scheme liability in accordance with IAS19 is carried out annually by the Scheme Actuary. The latest assessment of the liabilities of the scheme is contained in the Scheme Actuary report, which forms part of the annual NHS Pension Scheme (England and Wales) Resource Account, published annually. These accounts can be viewed on the NHS Pensions website.

## **(m) Judgements and estimates**

In the application of the accounting policies, the trustee is required to make judgements, estimates and assumptions about its carrying amounts of assets and liabilities that are not readily apparent from other sources. The estimates and associated assumptions are based on historical experience and other factors that are considered to be relevant. Actual results may differ from these estimates.

## **(n) Financial Instruments**

The charities have financial assets and financial liabilities of a kind that qualify as basic financial instruments. Basic financial instruments are initially recognised at transaction value and subsequently measured at amortised cost using the effective interest method. Financial assets are held at amortised cost.

## **2. PRIOR YEAR COMPARATIVES BY TYPE OF FUND**

The primary statements provide prior year comparatives in total; this note provides prior period comparatives for the statement of financial activities and the balance sheet for each of the funds included in the notes to the accounts.

# ***EYUP! UNRESTRICTED FUNDS - STATEMENT OF FINANCIAL ACTIVITY FOR THE YEAR ENDED 31 MARCH 2024***

|                                    | 2024         | 2023         |
|------------------------------------|--------------|--------------|
|                                    | £'000        | £'000        |
| <b>Income and endowments from:</b> |              |              |
| Donations and legacies             | 72           | 25           |
| Charitable activities              | 0            | 106          |
| Other trading activities           | 41           | 37           |
| Investments                        | 11           | 2            |
| <b>Total income resources</b>      | <b>124</b>   | <b>170</b>   |
|                                    |              |              |
| <b>Expenditure on:</b>             |              |              |
| Raising funds                      | (77)         | (60)         |
| Charitable activities              | (89)         | (44)         |
| <b>Total expenditure</b>           | <b>(166)</b> | <b>(104)</b> |
|                                    |              |              |
| <b>Net income / (expenditure)</b>  | <b>(42)</b>  | <b>66</b>    |
|                                    |              |              |
| Transfers between funds            | 0            | 0            |
|                                    |              |              |
| <b>Net movement in funds</b>       | <b>(42)</b>  | <b>66</b>    |
|                                    |              |              |
| <b>Reconciliation of funds</b>     |              |              |
| Total funds brought forward        | 290          | 224          |
| <b>Total funds carried forward</b> | <b>248</b>   | <b>290</b>   |

# ***EYUP! UNRESTRICTED FUNDS - BALANCE SHEET AS AT 31 MARCH 2024***

|   | 2024       | 2023       |
|---|------------|------------|
|   | £'000      | £'000      |
| <i>Current assets</i>   |            |            |
| Debtors   | 0          | 3          |
| Cash and cash equivalents                                     | 254        | 291        |
| <b>Total current assets</b>                                   | <b>254</b> | <b>294</b> |
|   |            |            |
| <i>Liabilities</i>  |            |            |
| Creditors falling due within one year                         | (6)        | (4)        |
| <b>Net current assets (liabilities)</b>                       | <b>248</b> | <b>290</b> |
| <b>Total assets less current liabilities</b>                  | <b>248</b> | <b>290</b> |
|   |            |            |
| <b>Total net assets or liabilities for unrestricted funds</b> | <b>248</b> | <b>290</b> |
|   |            |            |
| <b>Total unrestricted funds</b>                               | <b>248</b> | <b>290</b> |

# ***RESTRICTED FUNDS - STATEMENT OF FINANCIAL ACTIVITY FOR THE YEAR ENDED 31 MARCH 2024***

| <b>2024</b>                        |              |                             |                       |                       |              |
|------------------------------------|--------------|-----------------------------|-----------------------|-----------------------|--------------|
|                                    | <b>EyUp!</b> | <b>Mental Health Museum</b> | <b>Creative Minds</b> | <b>Spirit in Mind</b> | <b>Total</b> |
|                                    | £'000        | £'000                       | £'000                 | £'000                 | £'000        |
| <b>Income from:</b>                |              |                             |                       |                       |              |
| Donations and legacies             | 51           | 60                          | 250                   | 10                    | 371          |
| Charitable activities              | 0            | 0                           | 320                   | 15                    | 335          |
| Investments                        | 0            | 3                           | 37                    | 3                     | 43           |
| <b>Total income</b>                | <b>51</b>    | <b>63</b>                   | <b>607</b>            | <b>28</b>             | <b>749</b>   |
| <b>Expenditure on:</b>             |              |                             |                       |                       |              |
| Raising funds                      | 0            | 0                           | (1)                   | 0                     | (1)          |
| Charitable activities              | (61)         | (63)                        | (730)                 | (26)                  | (880)        |
| <b>Total expenditure</b>           | <b>(61)</b>  | <b>(63)</b>                 | <b>(731)</b>          | <b>(26)</b>           | <b>(881)</b> |
| <b>Net income / (expenditure)</b>  | <b>(10)</b>  | <b>0</b>                    | <b>(124)</b>          | <b>2</b>              | <b>(132)</b> |
| Transfers between funds            |              | 0                           | 0                     | 0                     | 0            |
| <b>Net movement in funds</b>       | <b>(10)</b>  | <b>0</b>                    | <b>(124)</b>          | <b>2</b>              | <b>(132)</b> |
| <b>Reconciliation of funds</b>     |              |                             |                       |                       |              |
| Total funds brought forward        | 79           | 99                          | 1,247                 | 69                    | 1,494        |
| <b>Total funds carried forward</b> | <b>69</b>    | <b>99</b>                   | <b>1,123</b>          | <b>71</b>             | <b>1,362</b> |

| 2023                               |             |                      |                |                |                |
|------------------------------------|-------------|----------------------|----------------|----------------|----------------|
|                                    | EyUp!       | Mental Health Museum | Creative Minds | Spirit in Mind | Total          |
|                                    | £'000       | £'000                | £'000          | £'000          | £'000          |
| <b>Income from:</b>                |             |                      |                |                |                |
| Donations and legacies             | 0           | 108                  | 415            | 35             | 558            |
| Charitable activities              | 56          | 36                   | 638            | 15             | 745            |
| Investments                        | 0           | 0                    | 5              | 0              | 5              |
| <b>Total income</b>                | <b>56</b>   | <b>144</b>           | <b>1,058</b>   | <b>50</b>      | <b>1,308</b>   |
| <b>Expenditure on:</b>             |             |                      |                |                |                |
| Charitable activities              | (66)        | (109)                | (802)          | (68)           | (1,045)        |
| <b>Total expenditure</b>           | <b>(66)</b> | <b>(109)</b>         | <b>(802)</b>   | <b>(68)</b>    | <b>(1,045)</b> |
| <b>Net income / (expenditure)</b>  | <b>(10)</b> | <b>35</b>            | <b>256</b>     | <b>(18)</b>    | <b>263</b>     |
| Transfers between funds            |             | 0                    | 0              | 0              | 0              |
| <b>Net movement in funds</b>       | <b>(10)</b> | <b>35</b>            | <b>256</b>     | <b>(18)</b>    | <b>263</b>     |
| <b>Reconciliation of funds</b>     |             |                      |                |                |                |
| Total funds brought forward        | 89          | 64                   | 991            | 87             | 1,231          |
| <b>Total funds carried forward</b> | <b>79</b>   | <b>99</b>            | <b>1,247</b>   | <b>69</b>      | <b>1,494</b>   |



# ***RESTRICTED FUNDS - BALANCE SHEET AS AT 31 MARCH 2024***

| <b>2024</b>   |              |                             |                       |                       |              |
|---|--------------|-----------------------------|-----------------------|-----------------------|--------------|
|   | <b>EyUp!</b> | <b>Mental Health Museum</b> | <b>Creative Minds</b> | <b>Spirit in Mind</b> | <b>Total</b> |
|   | £'000        | £'000                       | £'000                 | £'000                 | £'000        |
| <b>Current assets</b>                                       |              |                             |                       |                       |              |
| Debtors   | 0            | 0                           | 1                     | 0                     | 1            |
| Cash and cash equivalents                                   | 69           | 98                          | 1,179                 | 71                    | 1,417        |
| <b>Total current assets</b>                                 | <b>69</b>    | <b>98</b>                   | <b>1,180</b>          | <b>71</b>             | <b>1,418</b> |
|   |              |                             |                       |                       |              |
| <b>Liabilities</b>  |              |                             |                       |                       |              |
| Creditors falling due within one year                       | 0            | 0                           | (56)                  | 0                     | (56)         |
| Accruals  | 0            | 0                           | 0                     | 0                     | 0            |
| <b>Net current assets (liabilities)</b>                     | <b>69</b>    | <b>98</b>                   | <b>1,124</b>          | <b>71</b>             | <b>1,362</b> |
| <b>Total assets less current liabilities</b>                | <b>69</b>    | <b>98</b>                   | <b>1,124</b>          | <b>71</b>             | <b>1,362</b> |
|   |              |                             |                       |                       |              |
| <b>Total net assets or liabilities for restricted funds</b> | <b>69</b>    | <b>98</b>                   | <b>1,124</b>          | <b>71</b>             | <b>1,362</b> |
|   |              |                             |                       |                       |              |
| <b>Total restricted funds</b>                               | <b>69</b>    | <b>98</b>                   | <b>1,124</b>          | <b>71</b>             | <b>1,362</b> |

# ***RESTRICTED FUNDS - BALANCE SHEET AS AT 31 MARCH 2023***

| <b>2023</b>   |              |                             |                       |                       |              |
|---|--------------|-----------------------------|-----------------------|-----------------------|--------------|
|   | <b>EyUp!</b> | <b>Mental Health Museum</b> | <b>Creative Minds</b> | <b>Spirit in Mind</b> | <b>Total</b> |
|   | £'000        | £'000                       | £'000                 | £'000                 | £'000        |
| <b>Current assets</b>                                       |              |                             |                       |                       |              |
| Debtors   | 0            | 0                           | 142                   | 0                     | 142          |
| Cash and cash equivalents                                   | 80           | 99                          | 1,315                 | 69                    | 1,563        |
| <b>Total current assets</b>                                 | <b>80</b>    | <b>99</b>                   | <b>1,457</b>          | <b>69</b>             | <b>1,705</b> |
|   |              |                             |                       |                       |              |
| <b>Liabilities</b>  |              |                             |                       |                       |              |
| Creditors falling due within one year                       | (1)          | 0                           | (190)                 | 0                     | (191)        |
| Accruals  | 0            | 0                           | (20)                  | 0                     | (20)         |
| <b>Net current assets (liabilities)</b>                     | <b>79</b>    | <b>99</b>                   | <b>1,247</b>          | <b>69</b>             | <b>1,494</b> |
| <b>Total assets less current liabilities</b>                | <b>79</b>    | <b>99</b>                   | <b>1,247</b>          | <b>69</b>             | <b>1,494</b> |
|   |              |                             |                       |                       |              |
| <b>Total net assets or liabilities for restricted funds</b> | <b>79</b>    | <b>99</b>                   | <b>1,247</b>          | <b>69</b>             | <b>1,494</b> |
|   |              |                             |                       |                       |              |
| <b>Total restricted funds</b>                               | <b>79</b>    | <b>99</b>                   | <b>1,247</b>          | <b>69</b>             | <b>1,494</b> |

### 3. RELATED PARTY TRANSACTIONS

The corporate trustee governs EyUp! and its linked charities. The corporate trustee is the Trust. EyUp! has made payments to the Trust in relation to administration costs in support of grant making activities which are included in direct activity costs (note 9). The Trust has also made several grant payments to EyUp! and its linked charities. These are made on an arm’s length basis.

|   | Total<br>2024 | Total<br>2023 |
|---|---------------|---------------|
|   | £'000         | £'000         |
| South West Yorkshire Partnership NHS Foundation Trust | 513           | 1034          |
| Total   | 513           | 1034          |

There was £0k closing balance in debtors (£142k 2022/23) and £61k (194k 2022/23) in creditors in respect of the Trust.

EyUp! and its linked charities is a wholly owned subsidiary of South West Yorkshire Partnership NHS Foundation Trust, an NHS Foundation Trust registered in England. South West Yorkshire Partnership NHS Foundation Trust is also the ultimate parent company.

The parent undertaking of the smallest group which also includes the charities, and for which consolidated financial statements are prepared, is South West Yorkshire Partnership NHS Foundation Trust.

Copies of the financial statements for this group can be obtained from:

South West Yorkshire Partnership NHS Foundation Trust  
Fieldhead Hospital  
Ouchthorpe Lane  
Wakefield  
WF1 3SP

South West Yorkshire Partnership NHS Foundation Trust is a public benefit organisation established under the National Health Service Act 2006. NHS England has the power to control the Trust within the meaning of IAS27 ‘Consolidated and Separate Financial Statements’.

NHS England is accountable to the Secretary of State for Health and therefore the Trust’s ultimate parent is HM Government.

#### 4. INCOME FROM DONATIONS AND LEGACIES AND CHARITABLE ACTIVITIES

|                            | 2024                    |                     |            | 2023                    |                     |              |
|----------------------------|-------------------------|---------------------|------------|-------------------------|---------------------|--------------|
|                            | Unrestrict-<br>ed funds | Restricted<br>funds | Total 2024 | Unrestrict-<br>ed funds | Restricted<br>funds | Total 2023   |
|                            | £'000                   | £'000               | £'000      | £'000                   | £'000               | £'000        |
| Donations from individuals | 35                      | 54                  | 89         | 25                      | 0                   | 25           |
| Corporate donations        | 7                       | 317                 | 324        | 0                       | 558                 | 558          |
| Legacies                   | 30                      | 0                   | 30         | 0                       | 0                   | 0            |
| Grants                     | 0                       | 335                 | 335        | 106                     | 745                 | 851          |
| <b>Total</b>               | <b>72</b>               | <b>706</b>          | <b>778</b> | <b>131</b>              | <b>1,303</b>        | <b>1,434</b> |

#### Analysis of Restricted Funds

|                            | 2024      |                   |                            |                   | 2023      |                   |                            |                   |
|----------------------------|-----------|-------------------|----------------------------|-------------------|-----------|-------------------|----------------------------|-------------------|
|                            | EyUp!     | Creative<br>minds | Mental<br>Health<br>Museum | Spirit in<br>Mind | EyUp!     | Creative<br>minds | Mental<br>Health<br>Museum | Spirit in<br>Mind |
|                            | £'000     | £'000             | £'000                      | £'000             | £'000     | £'000             | £'000                      | £'000             |
| Donations from individuals | 51        | 3                 | 0                          | 0                 | 0         | 0                 | 0                          | 0                 |
| Corporate donations        | 0         | 247               | 60                         | 10                | 0         | 415               | 108                        | 34                |
| Legacies                   | 0         | 0                 | 0                          | 0                 | 0         | 0                 | 0                          | 0                 |
| Grants                     | 0         | 320               | 0                          | 15                | 56        | 639               | 35                         | 15                |
| <b>Total</b>               | <b>51</b> | <b>570</b>        | <b>60</b>                  | <b>25</b>         | <b>56</b> | <b>1,054</b>      | <b>143</b>                 | <b>49</b>         |

Donations from individuals are gifts from members of the public, relatives, carers, service users and staff.

## 5. ANALYSIS OF INCOME FROM OTHER TRADING ACTIVITIES

|                       | 2024                    |                     |               | 2023                    |                     |               |
|-----------------------|-------------------------|---------------------|---------------|-------------------------|---------------------|---------------|
|                       | Unrestrict-<br>ed funds | Restricted<br>funds | Total<br>2024 | Unrestrict-<br>ed funds | Restricted<br>funds | Total<br>2023 |
|                       | £'000                   | £'000               | £'000         | £'000                   | £'000               | £'000         |
| Lottery               | 36                      | 0                   | 36            | 34                      | 0                   | 34            |
| Sale of<br>goods      | 3                       | 0                   | 3             | 3                       | 0                   | 3             |
| Fundraising<br>events | 2                       | 0                   | 2             | 0                       | 0                   | 0             |
| <b>Total</b>          | <b>41</b>               | <b>0</b>            | <b>41</b>     | <b>37</b>               | <b>0</b>            | <b>37</b>     |

## 6. ROLE OF VOLUNTEERS

Creative Minds have several volunteers who sit on the locality collectives which make decisions on small grant funding.

In accordance with the SORP, due to the absence of any reliable measurement basis, the contribution of these volunteers is not recognised in the accounts.

## 7. GROSS INVESTMENT INCOME

|  | 2024                       |                       |               | 2023                       |                       |               |
|--|----------------------------|-----------------------|---------------|----------------------------|-----------------------|---------------|
|  | Unre-<br>stricted<br>funds | Restrict-<br>ed funds | Total<br>2024 | Unre-<br>stricted<br>funds | Restrict-<br>ed funds | Total<br>2023 |
|  | £'000                      | £'000                 | £'000         | £'000                      | £'000                 | £'000         |
| Short term<br>investments and<br>deposits cash on<br>deposit | 11                         | 43                    | 54            | 2                          | 5                     | 7             |
| <b>Total</b>   | <b>11</b>                  | <b>43</b>             | <b>54</b>     | <b>2</b>                   | <b>5</b>              | <b>7</b>      |

The income shown for restricted funds is split, Creative Minds £37k (£5k 2022/23), Mental Health Museum £3k (£Nil 2022/23) and Spirit in Mind £3k (Nil 2022/23)

8. ANALYSIS ON EXPENDITURE ON RAISING FUNDS

|                   | 2024                       |                       |               | 2023                       |                       |               |
|-------------------|----------------------------|-----------------------|---------------|----------------------------|-----------------------|---------------|
|                   | Unre-<br>stricted<br>funds | Restrict-<br>ed funds | Total<br>2024 | Unre-<br>stricted<br>funds | Restrict-<br>ed funds | Total<br>2023 |
|                   | £'000                      | £'000                 | £'000         | £'000                      | £'000                 | £'000         |
| Lottery prizes    | 17                         | 0                     | 17            | 17                         | 0                     | 17            |
| Lottery admin fee | 0                          | 0                     | 0             | 0                          | 0                     | 0             |
| fundraising costs | 60                         | 1                     | 61            | 43                         | 0                     | 43            |
|                   | 77                         | 1                     | 78            | 60                         | 0                     | 60            |

9. ANALYSIS OF CHARITABLE EXPENDITURE

EyUp! did not undertake any direct charitable activities on its own account during the year. All the charitable expenditure was in the form of grant funding.

Grants were approved in favour of the partner organisations, principally South West Yorkshire Partnership NHS Foundation Trust to carry out activities that will benefit service users of the NHS. EyUp! incurred expenditure with third parties in pursuance of those grants or reimbursed expenditure incurred by them.

Creative Minds expenditure was in the form of grant funding. Details of the significant grants are found in note 10.

Mental Health Museum and Spirit in Mind undertake direct charitable activities.



|                                      | 2024                      |                             |                       |               | 2023                      |                             |                       |               |
|--------------------------------------|---------------------------|-----------------------------|-----------------------|---------------|---------------------------|-----------------------------|-----------------------|---------------|
|                                      | Activ-<br>ities<br>direct | Grant<br>funded<br>activity | Sup-<br>port<br>costs | Total<br>2024 | Activ-<br>ities<br>direct | Grant<br>funded<br>activity | Sup-<br>port<br>costs | Total<br>2023 |
|                                      | £'000                     | £'000                       | £'000                 | £'000         | £'000                     | £'000                       | £'000                 | £'000         |
| EyUp! service user activities        | 0                         | 150                         | 0                     | 150           | 0                         | 111                         | 0                     | 111           |
| Creative Minds activities            | 384                       | 341                         | 5                     | 730           | 328                       | 466                         | 8                     | 802           |
| Mental Health Museum activ-<br>ities | 63                        | 0                           | 0                     | 63            | 109                       | 0                           | 0                     | 109           |
| Spirit in Mind activities            | 26                        | 0                           | 0                     | 26            | 67                        | 0                           | 0                     | 67            |
|                                      | 473                       | 491                         | 5                     | 969           | 504                       | 576                         | 8                     | 1,089         |

## 10. ANALYSIS OF GRANTS

The charity does not make grants to individuals. All grants are made to the Trust or other third-party organisations.

| Creative Minds significant grants 2023/24      |  |  | £      | No |                                  |  |  |
|--|--|--|--------|----|----------------------------------|--|--|
| Community Links                                |  |  | 6,500  | 2  | The Watershed                    |  |  |
| ROKT Foundation                                |  |  | 5,000  | 1  | TRW / Chimes                     |  |  |
| Cloverleaf Advocacy 2000 Ltd                   |  |  | 4,525  | 1  | Shabang Inclusive Learning CIC   |  |  |
| IAsk (Immigration and Asylum Support Kirklees) |  |  | 4,500  | 1  | The Artworks                     |  |  |
| Yew Tree Arts                                  |  |  | 4,500  | 1  | Chol Theatre                     |  |  |
| Chime  |  |  | 4,000  | 1  | Aspire Creating Communities      |  |  |
| WDH  |  |  | 4,000  | 1  | ROKT Foundation                  |  |  |
| Yorkshire Youth and Music                      |  |  | 4,000  | 1  | Barnsley Music Service           |  |  |
| Growing Works                                  |  |  | 4,000  | 1  | Yew Tree                         |  |  |
| Grow Wakefield                                 |  |  | 4,000  | 1  | Lawrence Batley Theatre          |  |  |
| Phoenix Radio                                  |  |  | 3,800  | 1  | Action for Autism and Asperger's |  |  |
| Handmade Productions CIC                       |  |  | 3,655  | 1  | Cloverleaf Advocacy              |  |  |
| The Hepworth                                   |  |  | 3,614  | 1  | Outside the Box CIO              |  |  |
|  |  |  |        |    | Holmfirth Arts Festival          |  |  |
|  |  |  |        |    | Eden Forest CIC                  |  |  |
| Creative Minds significant grants 2022/23      |  |  | £      | No | Umbrella Yoga CIC                |  |  |
| Grow Wakefield                                 |  |  | 14,256 | 2  | Barnsley Heritage Museum         |  |  |
| S2R (Support to Recovery)                      |  |  | 10,897 | 4  | Creative Recovery                |  |  |
|  |  |  |        |    | Growing Works                    |  |  |

## 11. MOVEMENTS IN GRANT FUNDING COMMITMENTS ACCRUED

|   | 2024                |                         |       | 2023                |                         |       |
|---|---------------------|-------------------------|-------|---------------------|-------------------------|-------|
|   | Current liabilities | Non current liabilities | Total | Current liabilities | Non current liabilities | Total |
|   | £'000               | £'000                   | £'000 | £'000               | £'000                   | £'000 |
| Opening balance at 1 April                  | 20                  | 0                       | 20    | 15                  | 0                       | 15    |
| Additional commitments made during the year | 113                 | 0                       | 113   | 244                 | 0                       | 244   |
| Amounts paid during the year                | (123)               | 0                       | (123) | (239)               | 0                       | (239) |
| Amounts reversed during the year            | (10)                | 0                       | (10)  | 0                   | 0                       | 0     |
| Closing balance at 1 April                  | 0                   | 0                       | 0     | 20                  | 0                       | 20    |

The grants included are grants made by Creative Minds to external third parties where the award has been communicated.

As described in notes 9 and 10, the charity awarded several grants in the year. Many grants were awarded and paid out in the same financial year. However, some grants are multiyear grants paid over a longer period.

As the charity has control over the award and timing of grants there is little uncertainty around these payments.

## 12. ALLOCATION OF SUPPORT COSTS AND OVERHEADS

Support and overhead costs are allocated to charitable activities on a pro rata basis between funds. Support costs are the costs associated with the administration of the charity. These amounts are paid directly to South West Yorkshire Partnership NHS Foundation Trust. Salaries and related costs include the costs of the staff working in the linked charities and are allocated to each individual restricted fund and the fundraiser who is allocated to unrestricted funds.

The basis of allocation used are as follows:

- Balance: Each month the charge is allocated on a pro-rata basis on the balance of each fund.
- Direct: The salaries are charged direct to each restricted fund that the post holder works for.

| Charitable activities      | Unre-stricted funds | Re-stricted funds | 2024 Total | Unre-stricted funds | Re-stricted funds | 2023 Total |
|----------------------------|---------------------|-------------------|------------|---------------------|-------------------|------------|
|                            | £'000               | £'000             | £'000      | £'000               | £'000             | £'000      |
| External audit             | 0                   | 2                 | 2          | 0                   | 8                 | 8          |
| Financial administration   | 0                   | 0                 | 0          | 0                   | 0                 | 0          |
| Miscellaneous              | 0                   | 0                 | 0          | 0                   | 0                 | 0          |
| Salaries and related costs | 46                  | 506               | 552        | 39                  | 450               | 489        |
| <b>Total</b>               | <b>46</b>           | <b>508</b>        | <b>554</b> | <b>39</b>           | <b>458</b>        | <b>497</b> |

|                      | 2024 Total | 2023 Total |
|----------------------|------------|------------|
|                      | £'000      | £'000      |
| EyUp! – Unrestricted | 46         | 39         |
| EyUp! – Restricted   | 56         | 57         |
| Creative Minds       | 388        | 336        |
| Mental Health Museum | 55         | 56         |
| Spirit in Mind       | 9          | 9          |
|                      | <b>554</b> | <b>497</b> |

### 13. TRUSTEE REMUNERATION, BENEFITS AND EXPENSES

The corporate trustee give their time freely and receive no remuneration or reimbursement of expenses for the work that they undertake as trustee.

## 14. ANALYSIS OF STAFF COSTS AND REMUNERATION OF KEY MANAGEMENT PERSONNEL

|                                 | 2024       | 2023       |
|---------------------------------|------------|------------|
|                                 | £'000      | £'000      |
| Salaries and wages              | 474        | 421        |
| Social security costs           | 34         | 30         |
| Employer's pension contribution | 44         | 38         |
| <b>Total</b>                    | <b>552</b> | <b>489</b> |

|                      | 2024       | 2023       |
|----------------------|------------|------------|
|                      | £'000      | £'000      |
| EyUp! – unrestricted | 46         | 39         |
| EyUp! – restricted   | 56         | 57         |
| Creative Minds       | 386        | 328        |
| Mental Health Museum | 55         | 56         |
| Spirit in Mind       | 9          | 9          |
| <b>Total</b>         | <b>552</b> | <b>489</b> |

The average number of full-time equivalent employees during the year was 15 (2023: 15). EyUp! - 2 (2023: 2); Creative Minds - 8 (2023: 8); Mental Health Museum - 2 (2023: 2); Spirit in Mind - 1 (2023:1)

One employee within Creative Minds had emoluments in excess of £60,000 (2023: 1)

## 15. AUDITORS' REMUNERATION

The auditors' remuneration of £2,400 (2023 £7,800) related solely to the independent examination (audit 2023) with no additional work being undertaken (2023: nil).

## 16. ANALYSIS OF CURRENT DEBTORS

| Debtors under 1 year | 2024     | 2023       |
|----------------------|----------|------------|
|                      | £'000    | £'000      |
| Trade debtors        | 1        | 142        |
| Prepayment           | 0        | 3          |
| <b>Total debtors</b> | <b>1</b> | <b>145</b> |

## 17. ANALYSIS OF CASH AND CASH EQUIVALENTS

|  | 2024         | 2023         |
|--|--------------|--------------|
|  | £'000        | £'000        |
| Cash in hand                           | 197          | 163          |
| Notice deposits (less than 3 months)   | 1,474        | 1,691        |
| <b>Total cash and cash equivalents</b> | <b>1,671</b> | <b>1,854</b> |

No cash or cash equivalents or current asset investments were held in non-cash investments or outside of the UK.

All the amounts held on interest bearing deposit are available to spend on charitable activities.

## 18. ANALYSIS OF LIABILITIES

|                               | 2024        | 2023         |
|-------------------------------|-------------|--------------|
|                               | £'000       | £'000        |
| <b>Creditors under 1 year</b> |             |              |
| Trade creditors               | (62)        | (195)        |
| Accruals for grants           | 0           | (20)         |
| <b>Total</b>                  | <b>(62)</b> | <b>(215)</b> |

There are no liabilities greater than one year in 2022/23 (nil 2021/22)

## 19. RECONCILIATION OF NET INCOME / (EXPENDITURE) TO NET CASH FLOW FROM OPERATING ACTIVITIES

|  | 2024  | 2023  |
|--|-------|-------|
|  | £'000 | £'000 |
| Net income / (expenditure) for the reporting period (as per the statement of financial activities) | (174) | 328   |
| Adjustments for:   |       |       |
| Dividends, interest and rents from investments   | (54)  | (7)   |
| (Increase)/decrease in debtors   | 144   | 74    |
| Increase/(decrease) in creditors   | (153) | 161   |
| Net cash provided by (used in) operating activities  | (237) | 556   |

## 20. TRANSFERS BETWEEN FUNDS

There was one transfer £34k in 2022/23 in EyUp! unrestricted funds from designated funds to general funds in year. This transfer was from dormant designated funds in line with the reserves policy (2021/22: nil).



## 21. ANALYSIS OF CHARITABLE FUNDS

### (a) Analysis of restricted fund movements

|                         | Balance<br>b/fwd | Income     | Expendi-<br>ture | Transfers | Fund fwd     |
|-------------------------|------------------|------------|------------------|-----------|--------------|
|                         | £'000            | £'000      | £'000            | £'000     | £'000        |
| EyUp!                   | 79               | 51         | (61)             | 0         | 69           |
| Mental Health<br>Museum | 99               | 63         | (63)             | 0         | 99           |
| Creative Minds          | 1,247            | 607        | (731)            | 0         | 1,123        |
| Spirit in Mind          | 69               | 28         | (26)             | 0         | 71           |
| <b>Total</b>            | <b>1,494</b>     | <b>749</b> | <b>(881)</b>     | <b>0</b>  | <b>1,362</b> |

The objects of each of the restricted funds are as follows:

**EyUp!** has 2 restricted funds. One relates to the grants from NHS Charities Together. These grants are specifically in response to the COVID-19 pandemic. The other restricted fund relates to NHS West Yorkshire ICB (Wakefield Place). This fund is for donations to NHS West Yorkshire ICB (Wakefield Place), but the activity benefits the service users of South West Yorkshire Partnership NHS Foundation Trust.

The **Mental Health Museum** became a linked charity in 2014/15. Its purpose is to become a leading resource for the history of mental health care, debates surrounding contemporary health care and treatments and life-long learning.

The **Creative Minds charitable trust** became a linked charity in September 2016. It works in partnership with groups and organisations to offer a range of innovative wellbeing opportunities.

**Spirit in Mind** became a linked charity in May 2017. Its objectives are the relief of sickness and preservation of health and wellbeing, the promotion of social inclusion for the public benefit and the promotion of racial harmony for the public benefit by raising awareness of mental health issues and promoting knowledge and mutual understanding between different racial groups.

## (b) Analysis of unrestricted and material designated fund movements

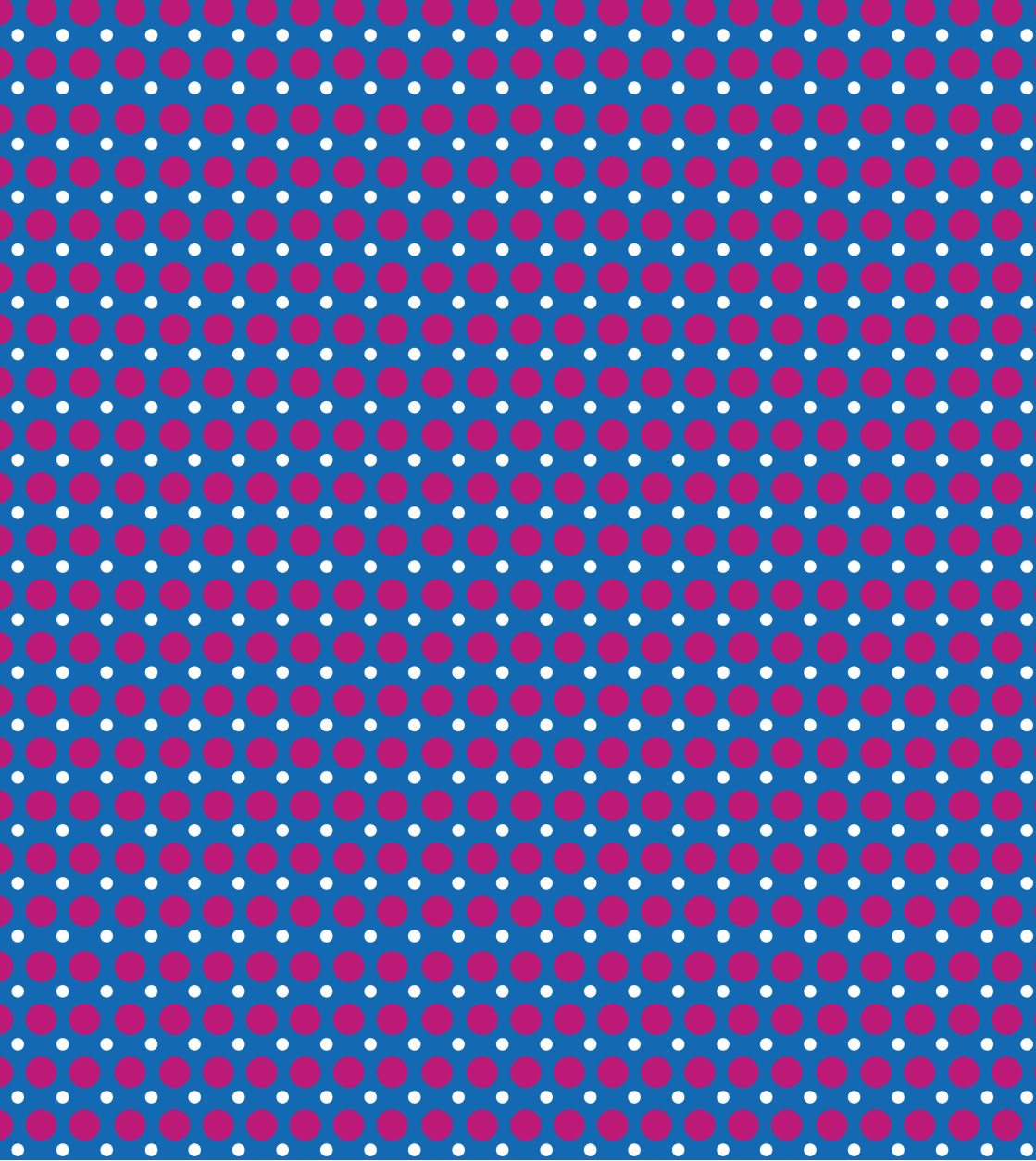
|                        | Balance<br>b/fwd | Income     | Expendi-<br>ture | Transfers | Fund<br>c/fwd |
|------------------------|------------------|------------|------------------|-----------|---------------|
|                        | £'000            | £'000      | £'000            | £'000     | £'000         |
| Other designated funds | 107              | 42         | (15)             | (34)      | 100           |
| General funds          | 183              | 82         | (151)            | 34        | 148           |
| <b>Total</b>           | <b>290</b>       | <b>124</b> | <b>(166)</b>     | <b>0</b>  | <b>248</b>    |

The trustee set an opening or closing balance of £50,000 or above as the threshold for the separate reporting of material designated (earmarked funds). In the interests of accountability and transparency a complete breakdown of all such funds is available upon written request.

The objects of each of the designated unrestricted funds are as follows:

Other designated funds relate to benefiting service users on wards and Trust services within South West Yorkshire Partnership NHS Foundation Trust for which donors have indicated their non-binding wishes when making their generous gifts.

The general funds include all donations for which a donor has not expressed any preference as to how the funds shall be spent and the unrestricted income accruing to the charity. These funds are applied for any charitable purpose to the benefit of the service users of South West Yorkshire Partnership NHS Foundation Trust at the absolute discretion of the trustee.



If you require a copy of this information in any other format or language please contact the Trust.