

# Midlands Women's Aid

Est. FEBRUARY 1974



midlands  
women's  
aid

*Your key to a safer future*

## Annual Report & Statistics

**2024-2025**

**LIVERING SERVICES 40 YEARS**



# Midlands Women's Aid

## Annual Report & Statistics 2024/2025

### Contents

AIMS AND OBJECTIVES OF MIDLANDS WOMEN'S AID.....	4
INTRODUCTION.....	5
REFUGE TEAM LEADER'S REPORT.....	6-9
CASE STUDIES.....	10-11
CHILD REFUGE SERVICE	12-15
EQUAL OPPORTUNITIES POLICY.....	16
STATISTICAL DATA FOR THE YEAR.....	17-18
TREASURER'S REPORT	20

Midlands Women's Aid. P.O. Box 8, Beeston, Nottingham. NG9 1HL  
Telephone No: 0300 302 0035

A BIG THANKS TO OUR SUPPORTERS.  
We could not do it without you.



All at  
Artex Ltd.



Angela Westerman  
and all at  
Westerman Homes  
Beeston Inner Wheel



Tesco  
Long Eaton  
Chilwell  
Toton

Beeston Parish Church



ASDA, Euphoria, Sainsbury's,  
Beeston Consolidated Charities

St Andrews with Castle Gate  
United Reform Church,  
Nottingham

Operation Orphan

Thank you to all of our supporters who wish to remain  
anonymous.  
Their continued and sustained support of our Refuge is  
invaluable.

## AIMS AND OBJECTIVES OF MIDLANDS WOMEN'S AID

The aims and objectives of this organisation were established to assist women and children who were in necessitous circumstances and in particular those women and children who had suffered from violence and maltreatment in their own homes.

- To provide refuge where such women and their children could enjoy temporary rest and protection from attack or persecution.
- To assist in providing education, housing, legal and medical advice, financial support for themselves and their children.
- To provide ongoing support to a woman who has been re-housed as, and if, necessary.
- To support where possible women who preferred not to seek refuge.



midlands  
women's  
aid

---

*Your key to a safer future*

## INTRODUCTION

Welcome to our Annual report for the year 2024-2025.

It has been another busy year for our organization and our accommodation has been full all year.

For many years, due to lack of affordable social housing, many of our client group were forced to spend a longer time in our accommodation, in some cases up to two years. This year we are pleased to report that due to an increase in newly built social housing some residents have been able to move on to their own tenancy shortening their stay with us. However, there is still a long way to go.

We have seen an increase in referrals from people with severe mental health issues. Often this client group can be challenging and many are not appropriate for communal living. In many cases this group need accommodation that provides 24 hour support staff. We have experienced difficulties in sourcing appropriate accommodation.

I wish to thank the Trustees, staff, volunteers and friends of Midlands Women's Aid for their hard work and support in tackling Domestic Abuse. Also, we would extend our thanks to all the groups and individuals who have supported Midlands Women's Aid during the year by donating money, clothing and other generous gifts. We have listed some of them by name on a separate page, however we would extend a special thanks to all our supporters whose names we do not know who have contributed to our fundraising activities throughout the year. They do not know how much their contribution are appreciated by the staff and clients.

Finally, I would like to recognise our clients who take the decision to leave all they know to protect their children from Domestic Abuse. Who with our support learn that they are not alone, and it is not their fault.

Catherine Saunders (CEO)

## **REFUGE TEAM LEADER'S REPORT**

Although our work can be demanding and challenging, it is also very rewarding. To travel with our client group on their journey from experiencing Domestic Abuse and living in fear, to going forward to survive and thrive is edifying.

The demand for our safe accommodation has remained high and our safe accommodation has been fully utilized.

It is unfortunate that due to the national housing shortage women are staying in our accommodation for longer periods of time. Delays in being re-housed when clients are ready to move on can cause other challenges and frustration for them. Also, it adds further strains on our support service. Housing authorities and agencies are quoting re-housing waiting times of two years and in some cases five years. It is not acceptable for our clients to remain in our accommodation for this length of time and we are active in seeking solutions to this problem.

### **Support Service**

We provide support using an individual support plan tailored to each person. The plan helps identify the support required and allows us to work with the client to build confidence, increase self-esteem, help them come to terms with the abuse they have experienced and work with them to help them reach their full potential. Clients are encouraged to take part in workshops and sessions around healthy relationships, safety planning and are empowered to organize and fully take part in making decisions which effect their lives

### **Safe Accommodation**

We aim to provide safe, clean and welcoming accommodation. (See photographs)

#### **Refuge;**

7 family bedrooms each with en-suite facilities,

#### **Communal areas;**

2 kitchens,  
2 lounges  
laundry room  
playroom.  
outside play area

## Communal lounge;



S





**A bedroom.** On arrival we provide a welcome pack consisting of basic essentials:



**One of the communal kitchens :**





Also, we provide 3 self-contained units, located close by the main building and allow for families with older boys, families with complex or special needs and pets

#### A self-contained Unit:



## **Case Studies :**

Here are some case histories of the families we have supported this year. We hope this highlights the needs, the difficulties they face and shows the recovery process they go through.

### **Child Case study 1**

Child G and her family were admitted to our refuge following her mother's decision to flee domestic abuse from her ex-partner. Child G is 10 years old.

Upon arrival, she was supported to settle into Refuge, provided with a Buddy bag which contains new pyjamas, underwear, toiletries and either a book or colouring sheet. An individual support plan was completed to identify her needs and worries. We supported getting Child G into our local school. An application was made for a Buttle grant which is for children who are vulnerable and are in crisis such as fleeing abuse. Mother was awarded £2400 which was used for educational trips/ activities and language lessons as mother's first language was Punjabi. Child G has been experiencing significant anxiety and has been attending art therapy at AMRA once a week, which has supported her emotional expression. Ongoing one-to-one support sessions are also provided with the children's worker to address emotional well-being and her wishes and feelings. This is done through Helping Hands programme. She has been encouraged to explore her emotions and talk about her needs. This has become much easier for her as she has become settled and feels more at ease with the children's worker.

As the family were involved in court proceedings, we ensured she received support during her conversations with CAFCASS, helping her feel safe while sharing her feelings with them and completing the wishes and feelings work sheets.

After the ongoing support from all professionals, G is now happy and settled. They are ready to move on after being in refuge for two years. Child G is full of confidence and looking forward to moving into a permanent home with her mother and younger brother.

## Case study 2

S was admitted into refuge, fleeing domestic abuse from her husband and the father of her two children. She had suffered physical, emotional and financial abuse.

S is from Pakistan and came to England on a spousal visa. She spoke very little English, her main language being Urdu. When arriving in England, S was not allowed out and was forced to stay at home to look after her children and to cook and clean. She had no contact with family or friends.

S felt frightened, in-secure and fearful of the future, both for herself and her children. The language barrier heightened her feelings of isolation. She made the brave decision to leave the family home.

We were able to offer S and her children a safe space, free from abuse and allow S time to heal and recover.

During her stay we enrolled S in English classes and watched her confidence grow. We began to be able to communicate with one another and S engaged brilliantly with our service.

We applied for Indefinite Leave to Remain, and this was successfully granted, allowing us to then make a housing application in her chosen area.

S was with us for a good length of time. She was moved to one of our satellite homes to help her further develop her confidence and language skills ready for her to live independently away from refuge.

S had previously never had an income or access to money. She learnt how to successfully manage her finances and was able to save money for household items for her new home.

S and her children moved on from refuge to their permanent home.

## Children Refuge Service

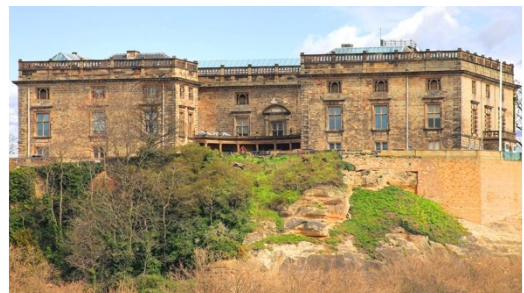
As a Children and Young Peoples Domestic Abuse worker it is my responsibility to work with children to overcome the trauma of witnessing or experiencing Domestic Abuse.

Almost two third of the residents in refuges are children, the majority of whom are of pre-school age. I provide stimulating play opportunities to encourage children from all backgrounds to develop and express themselves, as well as support children with homework and literacy. We also refer children to wider support services, including counsellors and children's centres

When a child or young person arrives, they are often left traumatized and often have to leave everything behind such as family, friends, school and toys. My initial task is to help settle them into Refuge.

The trips we have attended are:

- Farm
- Cinema
- Castle
- Fair
- Beach
- Pumkin farm



Our sessions might include:

- One to one session's
- Group sessions
- Family Intervention
- Behaviour Management
- Helping Hands Facilitation Programme
- Healthy Relationships
- Therapeutic play

See images below of our playroom

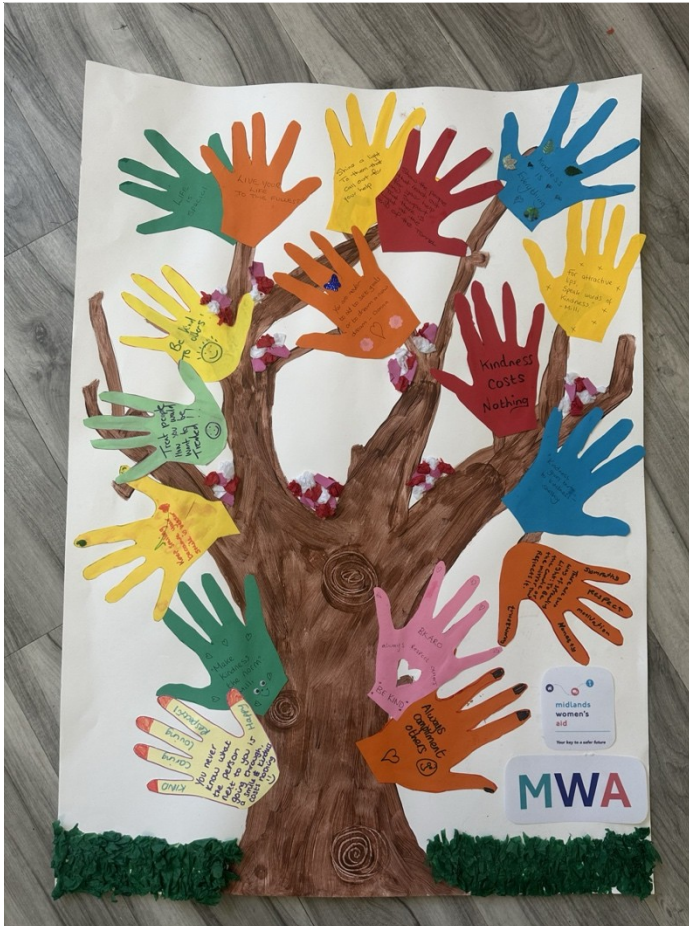




## Kind Tree Campaign

In 2025 we worked alongside Broxtowe Women's Project where we all came together to create kind trees. These were created to discuss being kind in the community and ways we can demonstrate this. Our adult residents and children took part and we show the posters below.





*Adult Tree*



*Children's Tree*

## Christmas 2024/2025

We would like to thank several organisations for their donations this Christmas.

- Okarno (Artex)
- Toton and Beeston Tesco
- The Lash Lounge
- Richard Gaunt
- Highfields Fire Station
- Toy appeal
- Story Contractors



- Vicky
- Sarah
- Forget me Notts
- Jasmine





# **EQUAL OPPORTUNITIES POLICY.**

## **Declaration of Intent**

Midlands Women's Aid provides temporary accommodation, support and advocacy to women and children experiencing violence and supports their long-term future needs. This means challenging the abuse of women and children.

Midlands Women's Aid is committed to the principles of equal opportunities. Midlands Women's Aid is working towards the elimination of all types of violence against women. We are also working towards the elimination of all forms of sexism and racism.

We will ensure that we endeavour to combat direct or indirect discrimination in our employment practices and in our management and provision of services and will work to achieve these ends.

We intend that equal opportunities become a reality in practice and not simply a paper commitment. We will seek to implement a programme of positive action to make this policy fully effective by ensuring that no Midlands Women's Aid Trustee, job applicant, employee, volunteer, service user or agencies and other women's aid groups that we work with receive less favourable treatment on the grounds of race, colour, class, nationality, ethnic or national origins, cultural origin, religion, marital status, sexual orientation, disability, age, union activity or responsibility for children or place of residence.

## **Guidelines for Carrying out the Declaration of Intent**

The responsibility for implementing the Declaration of Intent lies with the whole of Midlands Women's Aid although the Trustees will be expected to carry the employers responsibility.

The Declaration of Intent will be posted publicly in the Midlands Women's Aid office and will also be made known to all members of the organisation, employees, volunteers and service users. Acceptance of the policy is a condition of membership of Midlands Women's Aid. The purpose of the Equal Opportunities policy is to set out clearly and comprehensively the steps Midlands Women's Aid intend to take to ensure equality of opportunity and combat direct and indirect discrimination in employment practice, management structures and practice, in service provision to individuals and groups and agencies and in its relationship with other groups.

## **Customer Care Policy**

We aim to give our service users the highest quality of help and assistance to ensure they receive equal treatment taking into account their cultural and individual needs. In the event that they are unhappy with the service or the facilities provided there is a complaints procedure in place. Each service user

will receive a handbook outlining services and policies, which includes the Complaints Procedure.

## STATISTICAL DATA FOR THE YEAR

The following statistics were collected by Midlands Women's Aid for the year ending March 2025:

TOTAL NUMBER OF BEDSPACES: 53		FAMILY ROOMS: 7	
Three Satellite Properties – 2 bed house, 1 bed flat and 1 bed flat			
Women admitted into Refuge: 18			
Children admitted into Refuge: 35			
Women refused because Refuge was full: 79			
Number of advice calls: 1021			
Referrals from agencies: 27			
Self referrals: 71			
Women housed	16		

## **SUMMARY OF QUESTIONNAIRE FINDINGS**

This year we have again seen an increase in single women referrals and women with mental health issues, drug and alcohol abuse.

On admission to the Refuge;

8 women had no physical injuries although had had injuries in the past  
8 women had injuries on admission ranging from facial cuts to black eyes  
14 women described bruising to all parts of their bodies  
10 women reported attempts to strangle  
9 women reported rape and sexual abuse  
12 women reported coercive control  
12 women reported financial control

When asked about past injuries, women described them as follows: strangulation, body bruising, bruised eyes, rape, threats with knives, pushing and pulling, coercive control, financial and emotional abuse.

When asked what they believed had caused the violence the response is always the same. Women described the following: "He's jealous" "He says it's my fault", "He says he has a right". "He thinks he owns me and the kids" Others blamed drugs and alcohol, jealousy, mental health, insecurity and 'his upbringing'.

Of the women admitted, 3 had had healthy previous relationships. All had experienced violence and controlling behaviour from their ex-partners.

Most women described their childhood as happy. Other women described domestic violence between their parents, violence to themselves.

When asked if there were any circumstances under which they would accept being hit by a man, all women said no.

## **TRUSTEE AND STAFF NAMES**

### **Trustees of Midlands Women's Aid**

Mrs K. Cains  
Ms S. Shaw  
Ms H. Venn

### **Staff of Midlands Women's Aid**

Cathy Saunders	CEO
Milli Collins	Refuge Services Manager
K.F	Complex needs Support Worker
S.C.	Support worker/Admin
A.M	Support Worker
M.K	Child Support Worker
H.B	Playworker
D.C	NACS/ Refuge Support

### **Auditor**

CAPlus Nottingham..

### **Legal Status**

Company Limited By Guarantee. Company Number 3122842  
Registered Charity. Charity registration Number 1055578

## TREASURERS REPORT

Our core income comes from rent income and funding from Nottinghamshire County Council (NCC). As our service is in great demand we little voids.

The current NCC funding ends 31<sup>st</sup> March 2026. We are pleased to announce that this funding has been extended for two years until March 2028. We have a healthy reserve and are financially secure for a few years

Beeston Consolidated Charity, a long-time supporter, continue to provide for their annual grant which provides for a full-time support worker and a part time Children's Worker post.

Another regular funder is Artex, a local firm and we continue to raise monies by way of our fund raising activities.

Salaries remain our major expenditure. The accommodation is looking a bit shabby. We intend to commence a major refurbishment of the bedrooms in the communal building, to replace the fitted wardrobes and storage units. The existing fittings were built in the 1970s.

**Midlands Women's Aid** a Company  
Limited By Guarantee.

Company No. 3122842  
Charity Reg. No. 1055578  
Registered in England & Wales.

**P.O. Box 8  
Beeston  
Nottingham  
NG9 1HL**

**Tel: 0300 302 0035  
E-mail: [support@mwa.org.uk](mailto:support@mwa.org.uk)  
[www.midlandswomensaid.org.uk](http://www.midlandswomensaid.org.uk)**



Search: Midlands Women's Aid or Go to  
**<https://www.facebook.com/Midlands-womens-aid-331713663608574/>**



**@AidMWA40**

Company registration number: 03122842

Charity registration number: 1055578

# Midlands Women's Aid

(A company limited by guarantee)

Annual Report and Financial Statements

for the Year Ended 31 March 2025

Community Accounting Plus  
Units 1 & 2 North West  
41 Talbot Street  
Nottingham  
NG1 5GL



# **Midlands Women's Aid**

## **Contents**

Reference and Administrative Details	1
Trustees' Report	2 to 4
Independent Examiner's Report	5
Statement of Financial Activities	6 to 7
Balance Sheet	8
Notes to the Financial Statements	9 to 17

## **Midlands Women's Aid**

### **Reference and Administrative Details**

<b>Trustees</b>	Kathleen C Cains, Treasurer / Chair Susan Shaw Holly Venn
<b>Senior Management Team</b>	Catherine Saunders, Chief Executive
<b>Charity Registration Number</b>	1055578
<b>Company Registration Number</b>	03122842
<b>Registered Office</b>	Charlotte House Stanier Way The Wyvern Business Park Derby DE21 6BF
<b>Independent Examiner</b>	Eva Stevens, employee of Community Accounting Plus Units 1 & 2 North West 41 Talbot Street Nottingham NG1 5GL

# **Midlands Women's Aid**

## **Trustees' Report**

The trustees, who are directors for the purposes of company law, present the annual report together with the financial statements of the charitable company for the year ended 31 March 2025.

### **Trustees**

Kathleen Cains, Treasurer / Chair  
Susan Shaw  
Holly Venn

### **Structure, governance and management**

#### ***Nature of governing document***

The charity is a company limited by guarantee and registered charity. It is operated under the rules of its memorandum and articles of association dated 7 November 1995 and most recently amended 3 April 1996. It has no share capital and the liability of each member in the event of winding-up is limited to £1.

#### ***Recruitment and appointment of trustees***

Advertised for via Website, selected process, interviewed by Trustees and appointed on receipt of favourable references.

#### ***Induction and training of trustees***

Trustees should avoid recommending people who are close colleagues, friends or relatives as this may affect the balance and objectivity of the committee as a whole.

New trustees are appointed on receipt of favourable references from two referees, they attend two committee meetings prior to joining the committee. This will apply to a co-optee or a member.

New trustees undergo an induction period to brief them on their legal obligations under charity and company law, the content of the Memorandum and Articles of Association, the committee and decision making process, the business plan and recent financial performance of the charity. During this period they meet key employees and other trustees.

They receive a copy of the Standing Orders and Delegated Authorities and information relating to a description of the service e.g. leaflets, annual reports.

#### ***Organisational structure***

The board of trustees administers the charity. The board meets quarterly. A CEO is employed to manage the day to day operations together with a staff team. To facilitate effective operations the CEO has delegated authority, within terms of delegation approved by the trustees, for operational matters including finance, employment and minor purchases.

# **Midlands Women's Aid**

## **Trustees' Report**

### **Objectives and activities**

#### ***Objects and aims***

The aims and objectives of this organisation are to assist women and children in necessitous circumstances and in particular those women and children who had suffered from violence and maltreatment in their own homes.

- To provide refuge where such women and their children could enjoy temporary rest and protection from attack or persecution;
- To assist in providing education, housing, legal and medical advice, financial support for themselves and their children;
- To provide ongoing support to women who have been re-housed as, and if, necessary;
- To support where possible women who preferred not to seek refuge.

#### ***Objectives, strategies and activities***

We provide Refuge accommodation, support for women and children, outreach and move on and resettlement services, awareness raising and training.

#### ***Public benefit***

The work of the charity provides public benefit by providing refuge accommodation by providing Refuge accommodation we keep women and children safe from further abuse. By providing healthy relationship course we equip women and children with the necessary skills and tools to assist them to go forward and live their lives free from abuse and help them realise their full potential. Reduce crime, reduce mental health problems, reduce need to seek medical services and reduce Social Services involvement.

The trustees confirm that they have complied with the requirements of section 17 of the Charities Act 2011 to have due regard to the public benefit guidance published by the Charity Commission for England and Wales.

### **Achievements and performance**

We have supported 78 survivors of Domestic Abuse. 48 of them have been re-housed away from abuse. 30 of them are currently housed in our safe accommodation.

Feedback shows that 99% of our survivors felt safer, 99% had increased self esteem, 95% had improved mental health.

Referrals are accepted from all parts of the Country. Each client is supported by a key worker using individually tailored support plans to identify their needs, signposting to other agencies, ie drug/alcohol, mental health. We provide advocacy for women and children. We work with our client on safety planning, healthy relationships and wellbeing courses.

### **Financial review**

Due to several years of sustainable funding we are financially secure.

#### ***Policy on reserves***

It is our policy to keep a reserve of six months income.

#### ***Principal risks and uncertainties***

##### ***Funding uncertainty***

Failure to secure funding from April 2026 could risk our services going forward from that date.

# Midlands Women's Aid

## Trustees' Report

### Statement of Responsibilities

The trustees (who are also the directors of Midlands Women's Aid for the purposes of company law) are responsible for preparing the trustees' report and the financial statements in accordance with applicable law and United Kingdom Accounting Standards (United Kingdom Generally Accepted Accounting Practice), including FRS 102 "The Financial Reporting Standard applicable in the UK and Republic of Ireland". The report and accounts have been prepared in accordance with the provisions in the Companies Act 2006 relating to small companies.

Company law requires the trustees to prepare financial statements for each financial year. Under company law the trustees must not approve the financial statements unless they are satisfied that they give a true and fair view of the state of affairs of the charitable company and of the incoming resources and application of resources, including its income and expenditure, of the charitable company for that period. In preparing these financial statements, the trustees are required to:

- select suitable accounting policies and apply them consistently;
- observe the methods and principles in the Charities SORP;
- make judgements and estimates that are reasonable and prudent;
- state whether applicable accounting standards, comprising FRS 102 have been followed, subject to any material departures disclosed and explained in the financial statements; and
- prepare the financial statements on the going concern basis unless it is inappropriate to presume that the charitable company will continue in business.

The trustees are responsible for keeping proper accounting records that can disclose with reasonable accuracy at any time the financial position of the charitable company and enable them to ensure that the financial statements comply with the Companies Act 2006. They are also responsible for safeguarding the assets of the charitable company and hence for taking reasonable steps for the prevention and detection of fraud and other irregularities.

The trustees are responsible for the maintenance and integrity of the corporate and financial information included on the charitable company's website. Legislation governing the preparation and dissemination of financial statements may differ from legislation in other jurisdictions.

### Small companies provision statement

This report has been prepared in accordance with the small companies regime under the Companies Act 2006.

The annual report was approved by the trustees of the charity on ..... and signed on its behalf by:



.....

Kathleen C Cains  
Trustee

## **Midlands Women's Aid**

### **Independent Examiner's Report to the trustees of Midlands Women's Aid ('the Company')**

#### **Independent examiner's report to the trustees of Midlands Women's Aid ('the Company')**

I report to the charity trustees on my examination of the accounts of the company for the year ended 31 March 2025.

#### **Responsibilities and basis of report**

As the charity's trustees of the Company (and also its directors for the purposes of company law) you are responsible for the preparation of the accounts in accordance with the requirements of the Companies Act 2006 ('the 2006 Act').

Having satisfied myself that the accounts of the Company are not required to be audited under Part 16 of the 2006 Act and are eligible for independent examination, I report in respect of my examination of your charity's accounts as carried out under section 145 of the Charities Act 2011 ('the 2011 Act'). In carrying out my examination I have followed the Directions given by the Charity Commission under section 145(5)(b) of the 2011 Act.

#### **Independent examiner's statement**

Since the Company's gross income exceeded £250,000 your examiner must be a member of a body listed in section 145 of the 2011 Act. I confirm that I am qualified to undertake the examination because I am a member of the Chartered Institute of Public Finance and Accountancy (CIPFA), which is one of the listed bodies.

I have completed my examination. I confirm that no matters have come to my attention in connection with the examination giving me cause to believe that in any material respect:

1. accounting records were not kept in respect of the Company as required by section 386 of the 2006 Act; or
2. the accounts do not accord with those records; or
3. the accounts do not comply with the accounting requirements of section 396 of the 2006 Act other than any requirement that the accounts give a 'true and fair' view which is not a matter considered as part of an independent examination; or
4. the accounts have not been prepared in accordance with the methods and principles of the Statement of Recommended Practice for accounting and reporting by charities [applicable to charities preparing their accounts in accordance with the Financial Reporting Standard applicable in the UK and Republic of Ireland (FRS 102)].

I have no concerns and have come across no other matters in connection with the examination to which attention should be drawn in this report in order to enable a proper understanding of the accounts to be reached.

.....  
Eva Stevens, BSc, CPFA, employee of Community Accounting Plus  
member of the Chartered Institute of Public Finance and Accountancy (CIPFA)

Units 1 & 2 North West  
41 Talbot Street  
Nottingham  
NG1 5GL

Date:.....

## Midlands Women's Aid

### Statement of Financial Activities for the Year Ended 31 March 2025 (Including Income and Expenditure Account and Statement of Total Recognised Gains and Losses)

	Note	Unrestricted £	Restricted £	Total 2025 £	Total 2024 £
<b>Income and Endowments from:</b>					
Donations and legacies	2	17,873	-	17,873	3,945
Charitable activities	3	163,973	237,357	401,330	375,905
Investment income	5	264	-	264	248
Total Income		<u>182,110</u>	<u>237,357</u>	<u>419,467</u>	<u>380,098</u>
<b>Expenditure on:</b>					
Charitable activities	6	<u>(154,997)</u>	<u>(231,015)</u>	<u>(386,012)</u>	<u>(381,651)</u>
Total Expenditure		<u>(154,997)</u>	<u>(231,015)</u>	<u>(386,012)</u>	<u>(381,651)</u>
Net income/(expenditure)		27,113	6,342	33,455	(1,553)
Transfers between funds		<u>(5,557)</u>	<u>5,557</u>	<u>-</u>	<u>-</u>
Net movement in funds		21,556	11,899	33,455	(1,553)
<b>Reconciliation of funds</b>					
Total funds brought forward		<u>193,934</u>	<u>230,749</u>	<u>424,683</u>	<u>426,236</u>
Total funds carried forward	13	<u><u>215,490</u></u>	<u><u>242,648</u></u>	<u><u>458,138</u></u>	<u><u>424,683</u></u>

All of the charity's activities derive from continuing operations during the above two periods.

The funds breakdown for the period is shown in note 13.

The notes on pages 9 to 17 form an integral part of these financial statements.



## Midlands Women's Aid

### Statement of Financial Activities for the Year Ended 31 March 2025 (Including Income and Expenditure Account and Statement of Total Recognised Gains and Losses)

These are the figures for the previous accounting period and are included for comparative purposes

	Note	Unrestricted funds £	Restricted funds £	Total 2024 £
<b>Income and Endowments from:</b>				
Donations and legacies	2	3,945	-	3,945
Charitable activities	3	143,887	232,018	375,905
Investment income	5	248	-	248
Total income		<u>148,080</u>	<u>232,018</u>	<u>380,098</u>
<b>Expenditure on:</b>				
Charitable activities	6	<u>(159,461)</u>	<u>(222,190)</u>	<u>(381,651)</u>
Total expenditure		<u>(159,461)</u>	<u>(222,190)</u>	<u>(381,651)</u>
Net (expenditure)/income		<u>(11,381)</u>	<u>9,828</u>	<u>(1,553)</u>
Net movement in funds		(11,381)	9,828	(1,553)
<b>Reconciliation of funds</b>				
Total funds brought forward		<u>205,315</u>	<u>220,921</u>	<u>426,236</u>
Total funds carried forward	13	<u><u>193,934</u></u>	<u><u>230,749</u></u>	<u><u>424,683</u></u>

The notes on pages 9 to 17 form an integral part of these financial statements.

**Midlands Women's Aid**  
**(Registration number: 03122842)**  
**Balance Sheet as at 31 March 2025**

	Note	2025 £	2024 £
<b>Fixed assets</b>			
Tangible assets	11	14,398	17,379
<b>Current assets</b>			
Debtors	8	880	745
Cash at bank and in hand		449,859	411,442
		450,739	412,187
<b>Creditors: Amounts falling due within one year</b>	9	(6,999)	(4,883)
<b>Net current assets</b>		443,740	407,304
<b>Net assets</b>		458,138	424,683
<b>Funds of the charity:</b>			
<b>Restricted income funds</b>			
Restricted funds	13	242,648	230,749
<b>Unrestricted income funds</b>			
Unrestricted funds		215,490	193,934
<b>Total funds</b>	13	458,138	424,683


For the financial year ending 31 March 2025 the charity was entitled to exemption from audit under section 477 of the Companies Act 2006 relating to small companies.

Directors' responsibilities:

- The members have not required the charity to obtain an audit of its accounts for the year in question in accordance with section 476; and
- The directors acknowledge their responsibilities for complying with the requirements of the Act with respect to accounting records and the preparation of accounts.

These financial statements have been prepared in accordance with the special provisions relating to companies subject to the small companies regime within Part 15 of the Companies Act 2006.

The financial statements on pages 6 to 17 were approved by the trustees, and authorised for issue on ..... and signed on their behalf by:

  
.....  
Kathleen C Cains  
Trustee

The notes on pages 9 to 17 form an integral part of these financial statements.

# **Midlands Women's Aid**

## **Notes to the Financial Statements for the Year Ended 31 March 2025**

### **1 Accounting policies**

#### **Summary of significant accounting policies and key accounting estimates**

The principal accounting policies applied in the preparation of these financial statements are set out below. These policies have been consistently applied to all the years presented, unless otherwise stated.

#### **Statement of compliance**

The financial statements have been prepared in accordance with Accounting and Reporting by Charities: Statement of Recommended Practice (applicable to charities preparing their accounts in accordance with the Financial Reporting Standard applicable in the UK and Republic of Ireland (FRS 102)) (issued in October 2019) - (Charities SORP (FRS 102)), the Financial Reporting Standard applicable in the UK and Republic of Ireland (FRS 102) and the Companies Act 2006.

#### **Basis of preparation**

Midlands Women's Aid meets the definition of a public benefit entity under FRS 102. Assets and liabilities are initially recognised at historical cost or transaction value unless otherwise stated in the relevant accounting policy notes.

#### **Going concern**

The financial statements have been prepared on a going concern basis.

The trustees assess whether the use of going concern is appropriate i.e. whether there are any material uncertainties related to events or conditions that may cast significant doubt on the ability of the charity to continue as a going concern. The trustees make this assessment in respect of a period of one year from the date of approval of the financial statements.

#### **Exemption from preparing a cash flow statement**

Under the exemption available to smaller charities the Board of Trustees has chosen not to include a Statement of Cash Flows within the financial statements.

#### **Income and endowments**

Voluntary income including donations, gifts, legacies and grants that provide core funding or are of a general nature is recognised when the charity has entitlement to the income, it is probable that the income will be received and the amount can be measured with sufficient reliability.

#### ***Donations and legacies***

Donations are recognised when the charity has been notified in writing of both the amount and settlement date. In the event that a donation is subject to conditions that require a level of performance by the charity before the charity is entitled to the funds, the income is deferred and not recognised until either those conditions are fully met, or the fulfilment of those conditions is wholly within the control of the charity and it is probable that these conditions will be fulfilled in the reporting period.

## Midlands Women's Aid

### Notes to the Financial Statements for the Year Ended 31 March 2025

#### Expenditure

All expenditure is recognised once there is a legal or constructive obligation to that expenditure, it is probable settlement is required and the amount can be measured reliably. All costs are allocated to the applicable expenditure heading that aggregate similar costs to that category. Where costs cannot be directly attributed to particular headings they have been allocated on a basis consistent with the use of resources, with central staff costs allocated on the basis of time spent, and depreciation charges allocated on the portion of the asset's use. Other support costs are allocated based on the spread of staff costs.

#### Charitable activities

Charitable expenditure comprises those costs incurred by the charity in the delivery of its activities and services for its beneficiaries. It includes both costs that can be allocated directly to such activities and those costs of an indirect nature necessary to support them.

#### Taxation

The charity is considered to pass the tests set out in Paragraph 1 Schedule 6 of the Finance Act 2010 and therefore it meets the definition of a charitable company for UK corporation tax purposes. Accordingly, the charity is potentially exempt from taxation in respect of income or capital gains received within categories covered by Chapter 3 Part 11 of the Corporation Tax Act 2010 or Section 256 of the Taxation of Chargeable Gains Act 1992, to the extent that such income or gains are applied exclusively to charitable purposes.

#### Tangible fixed assets

Individual fixed assets costing £500.00 or more are initially recorded at cost.

#### Depreciation and amortisation

Depreciation is provided on tangible fixed assets so as to write off the cost or valuation, less any estimated residual value, over their expected useful economic life as follows:

Asset class	Depreciation method and rate
Leasehold improvements	25% on a reducing balance basis
Furniture & equipment	25% on a reducing balance basis
IT equipment	25% on a reducing balance basis

#### Trade debtors

Trade debtors are amounts due from customers for merchandise sold or services performed in the ordinary course of business.

Trade debtors are recognised initially at the transaction price. They are subsequently measured at amortised cost using the effective interest method, less provision for impairment. A provision for the impairment of trade debtors is established when there is objective evidence that the charity will not be able to collect all amounts due according to the original terms of the receivables.

#### Cash and cash equivalents

Cash and cash equivalents comprise cash on hand and call deposits, and other short-term highly liquid investments that are readily convertible to a known amount of cash and are subject to an insignificant risk of change in value.

## Midlands Women's Aid

### Notes to the Financial Statements for the Year Ended 31 March 2025

#### Fund structure

Unrestricted income funds are general funds that are available for use at the trustees' discretion in furtherance of the objectives of the charity.

Restricted income funds are those grants for use in a particular area or for specific purposes, the use of which is restricted to that area or purpose.

#### Pensions and other post retirement obligations

The charity operates a defined contribution pension scheme for employees. The assets of the scheme are held separately from those of the charity. Pension costs charges in the Statement of Financial Activities represent the contributions payable by the charity during the year.

### 2 Income from donations and legacies

	Unrestricted funds General £	Total 2025 £	Total 2024 £
Donations and legacies;			
Donations from companies, trusts and similar proceeds	1,000	1,000	2,000
Donations from individuals	16,873	16,873	1,945
	<u>17,873</u>	<u>17,873</u>	<u>3,945</u>

### 3 Income from charitable activities

	Unrestricted funds General £	Restricted funds £	Total 2025 £	Total 2024 £
Grants and donations	-	237,357	237,357	232,018
Housing benefit	151,851	-	151,851	135,385
Resident rents	12,096	-	12,096	8,498
Sundry income	26	-	26	4
	<u>163,973</u>	<u>237,357</u>	<u>401,330</u>	<u>375,905</u>

## Midlands Women's Aid

### Notes to the Financial Statements for the Year Ended 31 March 2025

#### 4 Grants & donations

	Unrestricted funds £	Restricted funds £	Total £
Nottinghamshire County Council	-	201,357	201,357
Individual donations	16,873	-	16,873
Saint Gobain Ltd	1,000	-	1,000
Beeston Consolidated	-	36,000	36,000
	<u>17,873</u>	<u>237,357</u>	<u>255,230</u>

#### 5 Investment income

	Unrestricted funds General £	Total 2025 £	Total 2024 £
Interest receivable and similar income;			
Interest receivable on bank deposits	<u>264</u>	<u>264</u>	<u>248</u>

## Midlands Women's Aid

### Notes to the Financial Statements for the Year Ended 31 March 2025

#### 6 Expenditure on charitable activities

	Unrestricted funds General £	Restricted funds £	Total 2025 £	Total 2024 £
Activities & events	3,427	350	3,777	2,888
Building, repairs & maintenance	4,048	-	4,048	7,114
Cleaning	3,368	-	3,368	2,008
Council tax	2,390	-	2,390	2,478
Depreciation	4,800	-	4,800	5,792
Dues & subscriptions	559	-	559	2,139
Equipment	3,882	257	4,139	22,255
Grant spend (resettlement)	-	7,987	7,987	5,605
Insurance	6,480	-	6,480	5,898
IT expenses	2,992	648	3,640	3,524
Nacs	6,000	-	6,000	14,003
Office expenses	302	-	302	292
Printing & postage	1,696	-	1,696	1,892
Professional fees	54,483	1,685	56,168	59,482
Refreshments	61	-	61	77
Salaries, NI & pensions	19,384	218,068	237,452	211,537
Security	1,674	-	1,674	651
Staff expenses	459	-	459	722
Sundry expenses	20	10	30	589
Telephone	1,634	1,430	3,064	1,260
Training	2,158	580	2,738	3,538
Utilities	33,653	-	33,653	26,513
Travel & meetings	1,527	-	1,527	1,394
	<u>154,997</u>	<u>231,015</u>	<u>386,012</u>	<u>381,651</u>

#### 7 Net incoming/outgoing resources

Net incoming/(outgoing) resources for the year include:

	2025 £	2024 £
Depreciation of fixed assets	<u>4,800</u>	<u>5,792</u>



## Midlands Women's Aid

### Notes to the Financial Statements for the Year Ended 31 March 2025

#### 8 Debtors

	2025 £	2024 £
Prepayments	<u>880</u>	<u>745</u>

#### 9 Creditors: amounts falling due within one year

	2025 £	2024 £
Other creditors	<u>6,999</u>	<u>4,883</u>

#### 10 Staff costs

The aggregate payroll costs were as follows:

	2025 £	2024 £
<b>Staff costs during the year were:</b>		
Wages and salaries	219,333	196,479
Social security costs	15,166	12,323
Pension costs	<u>2,953</u>	<u>2,735</u>
	<u>237,452</u>	<u>211,537</u>

The monthly average number of persons (including senior management team) employed by the charity during the year was as follows:

	2025 No	2024 No
Average number of employees	<u>8</u>	<u>8</u>

6 (2024 - 5) of the above employees participated in the Defined Contribution Pension Schemes.

Contributions to the employee pension schemes for the year totalled £2,953 (2024 - £2,735).

No employee received emoluments of more than £60,000 during the year.

The total employee benefits of the key management personnel of the charity were £59,125 (2024 - £58,153).

## Midlands Women's Aid

### Notes to the Financial Statements for the Year Ended 31 March 2025

#### 11 Tangible fixed assets

	Leasehold improvements £	Furniture and equipment £	IT equipment £	Total £
<b>Cost</b>				
At 1 April 2024	13,800	62,314	51,579	127,693
Additions	-	-	1,819	1,819
At 31 March 2025	<u>13,800</u>	<u>62,314</u>	<u>53,398</u>	<u>129,512</u>
<b>Depreciation</b>				
At 1 April 2024	12,149	53,774	44,391	110,314
Charge for the year	413	2,135	2,252	4,800
At 31 March 2025	<u>12,562</u>	<u>55,909</u>	<u>46,643</u>	<u>115,114</u>
<b>Net book value</b>				
At 31 March 2025	<u>1,238</u>	<u>6,405</u>	<u>6,755</u>	<u>14,398</u>
At 31 March 2024	<u>1,651</u>	<u>8,540</u>	<u>7,188</u>	<u>17,379</u>

#### 12 Analysis of net assets between funds

	Unrestricted		2025 Total funds
	General £	Restricted £	£
Tangible fixed assets	14,398	-	14,398
Current assets	208,091	242,648	450,739
Current liabilities	(6,999)	-	(6,999)
Total net assets	<u>215,490</u>	<u>242,648</u>	<u>458,138</u>
	Unrestricted		2024
	General £	Restricted £	Total funds £
Tangible fixed assets	17,379	-	17,379
Current assets	181,438	230,749	412,187
Current liabilities	(4,883)	-	(4,883)
Total net assets	<u>193,934</u>	<u>230,749</u>	<u>424,683</u>

## Midlands Women's Aid

### Notes to the Financial Statements for the Year Ended 31 March 2025

#### 13 Funds

	Balance at 1 April 2024 £	Incoming resources £	Resources expended £	Transfers £	Balance at 31 March 2025 £
<b>Unrestricted funds</b>					
<i>General</i>					
General Fund	193,934	182,110	(154,997)	(5,557)	215,490
<b>Restricted funds</b>					
MHCLG fund	227,739	201,357	(186,448)	-	242,648
Resettlement Fund	3,010	-	(8,567)	5,557	-
Beeston Consolidated	-	36,000	(36,000)	-	-
<b>Total restricted funds</b>	<u>230,749</u>	<u>237,357</u>	<u>(231,015)</u>	<u>5,557</u>	<u>242,648</u>
<b>Total funds</b>	<u>424,683</u>	<u>419,467</u>	<u>(386,012)</u>	<u>-</u>	<u>458,138</u>

The specific purposes for which the funds are to be applied are as follows:

The MHCLG funding has been provided to ensure that the Refuge is not at risk of closure.

The Resettlement funding (now called Flexi fund) is to support women to access Refuge who may be barred for financial reasons.

The Beeston Consolidated fund, funds received towards salaries.

The transfer from the General fund to the Resettlement fund is to cover the deficit on this activity.

	Balance at 1 April 2023 £	Incoming resources £	Resources expended £	Balance at 31 March 2024 £
<b>Unrestricted funds</b>				
<i>General</i>				
General Fund	205,315	148,080	(159,461)	193,934
<b>Restricted</b>				
MHCLG fund	212,306	194,905	(179,472)	227,739
Resettlement Fund	8,615	-	(5,605)	3,010
Beeston Consolidated	-	37,113	(37,113)	-
<b>Total restricted funds</b>	<u>220,921</u>	<u>232,018</u>	<u>(222,190)</u>	<u>230,749</u>
<b>Total funds</b>	<u>426,236</u>	<u>380,098</u>	<u>(381,651)</u>	<u>424,683</u>

## Midlands Women's Aid

### Notes to the Financial Statements for the Year Ended 31 March 2025

#### 14 Fees payable to independent examiner

During the period, the fees payable (excluding VAT) to the charity's independent examiner Community Accounting Plus are analysed as follows:

	2025 £	2024 £
Independent examination	1,355	1,300
Other financial services	-	80

#### 15 Trustees remuneration and expenses

No trustees, nor any persons connected with them, have received any remuneration from the charity during the year.

No trustees have received any reimbursed expenses or any other benefits from the charity during the year.

#### 16 Related party transactions

There were no related party transactions in the year.

#### 17 Taxation

The charity is a registered charity and is therefore exempt from corporation taxation.

#### 18 Charity status

The charity is a company limited by guarantee and consequently does not have share capital. Each of the trustees is liable to contribute an amount not exceeding £1 towards the assets of the charity in the event of liquidation.

Company registration number: 03122842

Charity registration number: 1055578

# Midlands Women's Aid

(A company limited by guarantee)

Annual Report and Financial Statements

for the Year Ended 31 March 2025

Community Accounting Plus  
Units 1 & 2 North West  
41 Talbot Street  
Nottingham  
NG1 5GL

# **Midlands Women's Aid**

## **Contents**

Reference and Administrative Details	1
Trustees' Report	2 to 4
Independent Examiner's Report	5
Statement of Financial Activities	6 to 7
Balance Sheet	8
Notes to the Financial Statements	9 to 17

## **Midlands Women's Aid**

### **Reference and Administrative Details**

<b>Trustees</b>	Kathleen C Cains, Treasurer / Chair Susan Shaw Holly Venn
<b>Senior Management Team</b>	Catherine Saunders, Chief Executive
<b>Charity Registration Number</b>	1055578
<b>Company Registration Number</b>	03122842
<b>Registered Office</b>	Charlotte House Stanier Way The Wyvern Business Park Derby DE21 6BF
<b>Independent Examiner</b>	Eva Stevens, employee of Community Accounting Plus Units 1 & 2 North West 41 Talbot Street Nottingham NG1 5GL

# **Midlands Women's Aid**

## **Trustees' Report**

The trustees, who are directors for the purposes of company law, present the annual report together with the financial statements of the charitable company for the year ended 31 March 2025.

### **Trustees**

Kathleen Cains, Treasurer / Chair  
Susan Shaw  
Holly Venn

### **Structure, governance and management**

#### ***Nature of governing document***

The charity is a company limited by guarantee and registered charity. It is operated under the rules of its memorandum and articles of association dated 7 November 1995 and most recently amended 3 April 1996. It has no share capital and the liability of each member in the event of winding-up is limited to £1.

#### ***Recruitment and appointment of trustees***

Advertised for via Website, selected process, interviewed by Trustees and appointed on receipt of favourable references.

#### ***Induction and training of trustees***

Trustees should avoid recommending people who are close colleagues, friends or relatives as this may affect the balance and objectivity of the committee as a whole.

New trustees are appointed on receipt of favourable references from two referees, they attend two committee meetings prior to joining the committee. This will apply to a co-optee or a member.

New trustees undergo an induction period to brief them on their legal obligations under charity and company law, the content of the Memorandum and Articles of Association, the committee and decision making process, the business plan and recent financial performance of the charity. During this period they meet key employees and other trustees.

They receive a copy of the Standing Orders and Delegated Authorities and information relating to a description of the service e.g. leaflets, annual reports.

#### ***Organisational structure***

The board of trustees administers the charity. The board meets quarterly. A CEO is employed to manage the day to day operations together with a staff team. To facilitate effective operations the CEO has delegated authority, within terms of delegation approved by the trustees, for operational matters including finance, employment and minor purchases.



# **Midlands Women's Aid**

## **Trustees' Report**

### **Objectives and activities**

#### ***Objects and aims***

The aims and objectives of this organisation are to assist women and children in necessitous circumstances and in particular those women and children who had suffered from violence and maltreatment in their own homes.

- To provide refuge where such women and their children could enjoy temporary rest and protection from attack or persecution;
- To assist in providing education, housing, legal and medical advice, financial support for themselves and their children;
- To provide ongoing support to women who have been re-housed as, and if, necessary;
- To support where possible women who preferred not to seek refuge.

#### ***Objectives, strategies and activities***

We provide Refuge accommodation, support for women and children, outreach and move on and resettlement services, awareness raising and training.

#### ***Public benefit***

The work of the charity provides public benefit by providing refuge accommodation by providing Refuge accommodation we keep women and children safe from further abuse. By providing healthy relationship course we equip women and children with the necessary skills and tools to assist them to go forward and live their lives free from abuse and help them realise their full potential. Reduce crime, reduce mental health problems, reduce need to seek medical services and reduce Social Services involvement.

The trustees confirm that they have complied with the requirements of section 17 of the Charities Act 2011 to have due regard to the public benefit guidance published by the Charity Commission for England and Wales.

### **Achievements and performance**

We have supported 78 survivors of Domestic Abuse. 48 of them have been re-housed away from abuse. 30 of them are currently housed in our safe accommodation.

Feedback shows that 99% of our survivors felt safer, 99% had increased self esteem, 95% had improved mental health.

Referrals are accepted from all parts of the Country. Each client is supported by a key worker using individually tailored support plans to identify their needs, signposting to other agencies, ie drug/alcohol, mental health. We provide advocacy for women and children. We work with our client on safety planning, healthy relationships and wellbeing courses.

### **Financial review**

Due to several years of sustainable funding we are financially secure.

#### ***Policy on reserves***

It is our policy to keep a reserve of six months income.

#### ***Principal risks and uncertainties***

##### ***Funding uncertainty***

Failure to secure funding from April 2026 could risk our services going forward from that date.

# Midlands Women's Aid

## Trustees' Report

### Statement of Responsibilities

The trustees (who are also the directors of Midlands Women's Aid for the purposes of company law) are responsible for preparing the trustees' report and the financial statements in accordance with applicable law and United Kingdom Accounting Standards (United Kingdom Generally Accepted Accounting Practice), including FRS 102 "The Financial Reporting Standard applicable in the UK and Republic of Ireland". The report and accounts have been prepared in accordance with the provisions in the Companies Act 2006 relating to small companies.

Company law requires the trustees to prepare financial statements for each financial year. Under company law the trustees must not approve the financial statements unless they are satisfied that they give a true and fair view of the state of affairs of the charitable company and of the incoming resources and application of resources, including its income and expenditure, of the charitable company for that period. In preparing these financial statements, the trustees are required to:

- select suitable accounting policies and apply them consistently;
- observe the methods and principles in the Charities SORP;
- make judgements and estimates that are reasonable and prudent;
- state whether applicable accounting standards, comprising FRS 102 have been followed, subject to any material departures disclosed and explained in the financial statements; and
- prepare the financial statements on the going concern basis unless it is inappropriate to presume that the charitable company will continue in business.

The trustees are responsible for keeping proper accounting records that can disclose with reasonable accuracy at any time the financial position of the charitable company and enable them to ensure that the financial statements comply with the Companies Act 2006. They are also responsible for safeguarding the assets of the charitable company and hence for taking reasonable steps for the prevention and detection of fraud and other irregularities.

The trustees are responsible for the maintenance and integrity of the corporate and financial information included on the charitable company's website. Legislation governing the preparation and dissemination of financial statements may differ from legislation in other jurisdictions.

### Small companies provision statement

This report has been prepared in accordance with the small companies regime under the Companies Act 2006.

The annual report was approved by the trustees of the charity on ..... and signed on its behalf by:



.....  
Kathleen C Cains  
Trustee

## **Midlands Women's Aid**

### **Independent Examiner's Report to the trustees of Midlands Women's Aid ('the Company')**

#### **Independent examiner's report to the trustees of Midlands Women's Aid ('the Company')**

I report to the charity trustees on my examination of the accounts of the company for the year ended 31 March 2025.

#### **Responsibilities and basis of report**

As the charity's trustees of the Company (and also its directors for the purposes of company law) you are responsible for the preparation of the accounts in accordance with the requirements of the Companies Act 2006 ('the 2006 Act').

Having satisfied myself that the accounts of the Company are not required to be audited under Part 16 of the 2006 Act and are eligible for independent examination, I report in respect of my examination of your charity's accounts as carried out under section 145 of the Charities Act 2011 ('the 2011 Act'). In carrying out my examination I have followed the Directions given by the Charity Commission under section 145(5)(b) of the 2011 Act.

#### **Independent examiner's statement**

Since the Company's gross income exceeded £250,000 your examiner must be a member of a body listed in section 145 of the 2011 Act. I confirm that I am qualified to undertake the examination because I am a member of the Chartered Institute of Public Finance and Accountancy (CIPFA), which is one of the listed bodies.

I have completed my examination. I confirm that no matters have come to my attention in connection with the examination giving me cause to believe that in any material respect:

1. accounting records were not kept in respect of the Company as required by section 386 of the 2006 Act; or
2. the accounts do not accord with those records; or
3. the accounts do not comply with the accounting requirements of section 396 of the 2006 Act other than any requirement that the accounts give a 'true and fair' view which is not a matter considered as part of an independent examination; or
4. the accounts have not been prepared in accordance with the methods and principles of the Statement of Recommended Practice for accounting and reporting by charities [applicable to charities preparing their accounts in accordance with the Financial Reporting Standard applicable in the UK and Republic of Ireland (FRS 102)].

I have no concerns and have come across no other matters in connection with the examination to which attention should be drawn in this report in order to enable a proper understanding of the accounts to be reached.

.....  
Eva Stevens, BSc, CPFA, employee of Community Accounting Plus  
member of the Chartered Institute of Public Finance and Accountancy (CIPFA)

Units 1 & 2 North West  
41 Talbot Street  
Nottingham  
NG1 5GL

Date:.....

## Midlands Women's Aid

### Statement of Financial Activities for the Year Ended 31 March 2025 (Including Income and Expenditure Account and Statement of Total Recognised Gains and Losses)

	Note	Unrestricted £	Restricted £	Total 2025 £	Total 2024 £
<b>Income and Endowments from:</b>					
Donations and legacies	2	17,873	-	17,873	3,945
Charitable activities	3	163,973	237,357	401,330	375,905
Investment income	5	264	-	264	248
Total Income		<u>182,110</u>	<u>237,357</u>	<u>419,467</u>	<u>380,098</u>
<b>Expenditure on:</b>					
Charitable activities	6	<u>(154,997)</u>	<u>(231,015)</u>	<u>(386,012)</u>	<u>(381,651)</u>
Total Expenditure		<u>(154,997)</u>	<u>(231,015)</u>	<u>(386,012)</u>	<u>(381,651)</u>
Net income/(expenditure)		27,113	6,342	33,455	(1,553)
Transfers between funds		<u>(5,557)</u>	<u>5,557</u>	<u>-</u>	<u>-</u>
Net movement in funds		21,556	11,899	33,455	(1,553)
<b>Reconciliation of funds</b>					
Total funds brought forward		<u>193,934</u>	<u>230,749</u>	<u>424,683</u>	<u>426,236</u>
Total funds carried forward	13	<u><u>215,490</u></u>	<u><u>242,648</u></u>	<u><u>458,138</u></u>	<u><u>424,683</u></u>

All of the charity's activities derive from continuing operations during the above two periods.

The funds breakdown for the period is shown in note 13.

The notes on pages 9 to 17 form an integral part of these financial statements.

## Midlands Women's Aid

### Statement of Financial Activities for the Year Ended 31 March 2025 (Including Income and Expenditure Account and Statement of Total Recognised Gains and Losses)

These are the figures for the previous accounting period and are included for comparative purposes

	Note	Unrestricted funds £	Restricted funds £	Total 2024 £
<b>Income and Endowments from:</b>				
Donations and legacies	2	3,945	-	3,945
Charitable activities	3	143,887	232,018	375,905
Investment income	5	248	-	248
Total income		<u>148,080</u>	<u>232,018</u>	<u>380,098</u>
<b>Expenditure on:</b>				
Charitable activities	6	<u>(159,461)</u>	<u>(222,190)</u>	<u>(381,651)</u>
Total expenditure		<u>(159,461)</u>	<u>(222,190)</u>	<u>(381,651)</u>
Net (expenditure)/income		<u>(11,381)</u>	<u>9,828</u>	<u>(1,553)</u>
Net movement in funds		(11,381)	9,828	(1,553)
<b>Reconciliation of funds</b>				
Total funds brought forward		<u>205,315</u>	<u>220,921</u>	<u>426,236</u>
Total funds carried forward	13	<u><u>193,934</u></u>	<u><u>230,749</u></u>	<u><u>424,683</u></u>

The notes on pages 9 to 17 form an integral part of these financial statements.

**Midlands Women's Aid**  
**(Registration number: 03122842)**  
**Balance Sheet as at 31 March 2025**

	Note	2025 £	2024 £
<b>Fixed assets</b>			
Tangible assets	11	14,398	17,379
<b>Current assets</b>			
Debtors	8	880	745
Cash at bank and in hand		449,859	411,442
		450,739	412,187
<b>Creditors: Amounts falling due within one year</b>	9	(6,999)	(4,883)
<b>Net current assets</b>		443,740	407,304
<b>Net assets</b>		458,138	424,683
<b>Funds of the charity:</b>			
<b>Restricted income funds</b>			
Restricted funds	13	242,648	230,749
<b>Unrestricted income funds</b>			
Unrestricted funds		215,490	193,934
<b>Total funds</b>	13	458,138	424,683


For the financial year ending 31 March 2025 the charity was entitled to exemption from audit under section 477 of the Companies Act 2006 relating to small companies.

Directors' responsibilities:

- The members have not required the charity to obtain an audit of its accounts for the year in question in accordance with section 476; and
- The directors acknowledge their responsibilities for complying with the requirements of the Act with respect to accounting records and the preparation of accounts.

These financial statements have been prepared in accordance with the special provisions relating to companies subject to the small companies regime within Part 15 of the Companies Act 2006.

The financial statements on pages 6 to 17 were approved by the trustees, and authorised for issue on ..... and signed on their behalf by:

  
.....  
Kathleen C Cains  
Trustee

The notes on pages 9 to 17 form an integral part of these financial statements.

# **Midlands Women's Aid**

## **Notes to the Financial Statements for the Year Ended 31 March 2025**

### **1 Accounting policies**

#### **Summary of significant accounting policies and key accounting estimates**

The principal accounting policies applied in the preparation of these financial statements are set out below. These policies have been consistently applied to all the years presented, unless otherwise stated.

#### **Statement of compliance**

The financial statements have been prepared in accordance with Accounting and Reporting by Charities: Statement of Recommended Practice (applicable to charities preparing their accounts in accordance with the Financial Reporting Standard applicable in the UK and Republic of Ireland (FRS 102)) (issued in October 2019) - (Charities SORP (FRS 102)), the Financial Reporting Standard applicable in the UK and Republic of Ireland (FRS 102) and the Companies Act 2006.

#### **Basis of preparation**

Midlands Women's Aid meets the definition of a public benefit entity under FRS 102. Assets and liabilities are initially recognised at historical cost or transaction value unless otherwise stated in the relevant accounting policy notes.

#### **Going concern**

The financial statements have been prepared on a going concern basis.

The trustees assess whether the use of going concern is appropriate i.e. whether there are any material uncertainties related to events or conditions that may cast significant doubt on the ability of the charity to continue as a going concern. The trustees make this assessment in respect of a period of one year from the date of approval of the financial statements.

#### **Exemption from preparing a cash flow statement**

Under the exemption available to smaller charities the Board of Trustees has chosen not to include a Statement of Cash Flows within the financial statements.

#### **Income and endowments**

Voluntary income including donations, gifts, legacies and grants that provide core funding or are of a general nature is recognised when the charity has entitlement to the income, it is probable that the income will be received and the amount can be measured with sufficient reliability.

#### ***Donations and legacies***

Donations are recognised when the charity has been notified in writing of both the amount and settlement date. In the event that a donation is subject to conditions that require a level of performance by the charity before the charity is entitled to the funds, the income is deferred and not recognised until either those conditions are fully met, or the fulfilment of those conditions is wholly within the control of the charity and it is probable that these conditions will be fulfilled in the reporting period.

## **Midlands Women's Aid**

### **Notes to the Financial Statements for the Year Ended 31 March 2025**

#### **Expenditure**

All expenditure is recognised once there is a legal or constructive obligation to that expenditure, it is probable settlement is required and the amount can be measured reliably. All costs are allocated to the applicable expenditure heading that aggregate similar costs to that category. Where costs cannot be directly attributed to particular headings they have been allocated on a basis consistent with the use of resources, with central staff costs allocated on the basis of time spent, and depreciation charges allocated on the portion of the asset's use. Other support costs are allocated based on the spread of staff costs.

#### **Charitable activities**

Charitable expenditure comprises those costs incurred by the charity in the delivery of its activities and services for its beneficiaries. It includes both costs that can be allocated directly to such activities and those costs of an indirect nature necessary to support them.

#### **Taxation**

The charity is considered to pass the tests set out in Paragraph 1 Schedule 6 of the Finance Act 2010 and therefore it meets the definition of a charitable company for UK corporation tax purposes. Accordingly, the charity is potentially exempt from taxation in respect of income or capital gains received within categories covered by Chapter 3 Part 11 of the Corporation Tax Act 2010 or Section 256 of the Taxation of Chargeable Gains Act 1992, to the extent that such income or gains are applied exclusively to charitable purposes.

#### **Tangible fixed assets**

Individual fixed assets costing £500.00 or more are initially recorded at cost.

#### **Depreciation and amortisation**

Depreciation is provided on tangible fixed assets so as to write off the cost or valuation, less any estimated residual value, over their expected useful economic life as follows:

<b>Asset class</b>	<b>Depreciation method and rate</b>
Leasehold improvements	25% on a reducing balance basis
Furniture & equipment	25% on a reducing balance basis
IT equipment	25% on a reducing balance basis

#### **Trade debtors**

Trade debtors are amounts due from customers for merchandise sold or services performed in the ordinary course of business.

Trade debtors are recognised initially at the transaction price. They are subsequently measured at amortised cost using the effective interest method, less provision for impairment. A provision for the impairment of trade debtors is established when there is objective evidence that the charity will not be able to collect all amounts due according to the original terms of the receivables.

#### **Cash and cash equivalents**

Cash and cash equivalents comprise cash on hand and call deposits, and other short-term highly liquid investments that are readily convertible to a known amount of cash and are subject to an insignificant risk of change in value.



## Midlands Women's Aid

### Notes to the Financial Statements for the Year Ended 31 March 2025

#### Fund structure

Unrestricted income funds are general funds that are available for use at the trustees' discretion in furtherance of the objectives of the charity.

Restricted income funds are those grants for use in a particular area or for specific purposes, the use of which is restricted to that area or purpose.

#### Pensions and other post retirement obligations

The charity operates a defined contribution pension scheme for employees. The assets of the scheme are held separately from those of the charity. Pension costs charges in the Statement of Financial Activities represent the contributions payable by the charity during the year.

### 2 Income from donations and legacies

	Unrestricted funds General £	Total 2025 £	Total 2024 £
Donations and legacies;			
Donations from companies, trusts and similar proceeds	1,000	1,000	2,000
Donations from individuals	16,873	16,873	1,945
	<u>17,873</u>	<u>17,873</u>	<u>3,945</u>

### 3 Income from charitable activities

	Unrestricted funds General £	Restricted funds £	Total 2025 £	Total 2024 £
Grants and donations	-	237,357	237,357	232,018
Housing benefit	151,851	-	151,851	135,385
Resident rents	12,096	-	12,096	8,498
Sundry income	26	-	26	4
	<u>163,973</u>	<u>237,357</u>	<u>401,330</u>	<u>375,905</u>

## Midlands Women's Aid

### Notes to the Financial Statements for the Year Ended 31 March 2025

#### 4 Grants & donations

	Unrestricted funds £	Restricted funds £	Total £
Nottinghamshire County Council	-	201,357	201,357
Individual donations	16,873	-	16,873
Saint Gobain Ltd	1,000	-	1,000
Beeston Consolidated	-	36,000	36,000
	<u>17,873</u>	<u>237,357</u>	<u>255,230</u>

#### 5 Investment income

	Unrestricted funds General £	Total 2025 £	Total 2024 £
Interest receivable and similar income;			
Interest receivable on bank deposits	<u>264</u>	<u>264</u>	<u>248</u>

## Midlands Women's Aid

### Notes to the Financial Statements for the Year Ended 31 March 2025

#### 6 Expenditure on charitable activities

	Unrestricted funds General £	Restricted funds £	Total 2025 £	Total 2024 £
Activities & events	3,427	350	3,777	2,888
Building, repairs & maintenance	4,048	-	4,048	7,114
Cleaning	3,368	-	3,368	2,008
Council tax	2,390	-	2,390	2,478
Depreciation	4,800	-	4,800	5,792
Dues & subscriptions	559	-	559	2,139
Equipment	3,882	257	4,139	22,255
Grant spend (resettlement)	-	7,987	7,987	5,605
Insurance	6,480	-	6,480	5,898
IT expenses	2,992	648	3,640	3,524
Nacs	6,000	-	6,000	14,003
Office expenses	302	-	302	292
Printing & postage	1,696	-	1,696	1,892
Professional fees	54,483	1,685	56,168	59,482
Refreshments	61	-	61	77
Salaries, NI & pensions	19,384	218,068	237,452	211,537
Security	1,674	-	1,674	651
Staff expenses	459	-	459	722
Sundry expenses	20	10	30	589
Telephone	1,634	1,430	3,064	1,260
Training	2,158	580	2,738	3,538
Utilities	33,653	-	33,653	26,513
Travel & meetings	1,527	-	1,527	1,394
	154,997	231,015	386,012	381,651

#### 7 Net incoming/outgoing resources

Net incoming/(outgoing) resources for the year include:

	2025 £	2024 £
Depreciation of fixed assets	4,800	5,792

## Midlands Women's Aid

### Notes to the Financial Statements for the Year Ended 31 March 2025

#### 8 Debtors

	2025 £	2024 £
Prepayments	<u>880</u>	<u>745</u>

#### 9 Creditors: amounts falling due within one year

	2025 £	2024 £
Other creditors	<u>6,999</u>	<u>4,883</u>

#### 10 Staff costs

The aggregate payroll costs were as follows:

	2025 £	2024 £
<b>Staff costs during the year were:</b>		
Wages and salaries	219,333	196,479
Social security costs	15,166	12,323
Pension costs	<u>2,953</u>	<u>2,735</u>
	<u>237,452</u>	<u>211,537</u>

The monthly average number of persons (including senior management team) employed by the charity during the year was as follows:

	2025 No	2024 No
Average number of employees	<u>8</u>	<u>8</u>

6 (2024 - 5) of the above employees participated in the Defined Contribution Pension Schemes.

Contributions to the employee pension schemes for the year totalled £2,953 (2024 - £2,735).

No employee received emoluments of more than £60,000 during the year.

The total employee benefits of the key management personnel of the charity were £59,125 (2024 - £58,153).

## Midlands Women's Aid

### Notes to the Financial Statements for the Year Ended 31 March 2025

#### 11 Tangible fixed assets

	Leasehold improvements £	Furniture and equipment £	IT equipment £	Total £
<b>Cost</b>				
At 1 April 2024	13,800	62,314	51,579	127,693
Additions	-	-	1,819	1,819
At 31 March 2025	<u>13,800</u>	<u>62,314</u>	<u>53,398</u>	<u>129,512</u>
<b>Depreciation</b>				
At 1 April 2024	12,149	53,774	44,391	110,314
Charge for the year	413	2,135	2,252	4,800
At 31 March 2025	<u>12,562</u>	<u>55,909</u>	<u>46,643</u>	<u>115,114</u>
<b>Net book value</b>				
At 31 March 2025	<u>1,238</u>	<u>6,405</u>	<u>6,755</u>	<u>14,398</u>
At 31 March 2024	<u>1,651</u>	<u>8,540</u>	<u>7,188</u>	<u>17,379</u>

#### 12 Analysis of net assets between funds

	Unrestricted		2025 Total funds
	General £	Restricted £	£
Tangible fixed assets	14,398	-	14,398
Current assets	208,091	242,648	450,739
Current liabilities	(6,999)	-	(6,999)
Total net assets	<u>215,490</u>	<u>242,648</u>	<u>458,138</u>
	Unrestricted		2024
	General £	Restricted £	Total funds £
Tangible fixed assets	17,379	-	17,379
Current assets	181,438	230,749	412,187
Current liabilities	(4,883)	-	(4,883)
Total net assets	<u>193,934</u>	<u>230,749</u>	<u>424,683</u>

## Midlands Women's Aid

### Notes to the Financial Statements for the Year Ended 31 March 2025

#### 13 Funds

	Balance at 1 April 2024 £	Incoming resources £	Resources expended £	Transfers £	Balance at 31 March 2025 £
<b>Unrestricted funds</b>					
<i>General</i>					
General Fund	193,934	182,110	(154,997)	(5,557)	215,490
<b>Restricted funds</b>					
MHCLG fund	227,739	201,357	(186,448)	-	242,648
Resettlement Fund	3,010	-	(8,567)	5,557	-
Beeston Consolidated	-	36,000	(36,000)	-	-
<b>Total restricted funds</b>	<u>230,749</u>	<u>237,357</u>	<u>(231,015)</u>	<u>5,557</u>	<u>242,648</u>
<b>Total funds</b>	<u>424,683</u>	<u>419,467</u>	<u>(386,012)</u>	<u>-</u>	<u>458,138</u>

The specific purposes for which the funds are to be applied are as follows:

The MHCLG funding has been provided to ensure that the Refuge is not at risk of closure.

The Resettlement funding (now called Flexi fund) is to support women to access Refuge who may be barred for financial reasons.

The Beeston Consolidated fund, funds received towards salaries.

The transfer from the General fund to the Resettlement fund is to cover the deficit on this activity.

	Balance at 1 April 2023 £	Incoming resources £	Resources expended £	Balance at 31 March 2024 £
<b>Unrestricted funds</b>				
<i>General</i>				
General Fund	205,315	148,080	(159,461)	193,934
<b>Restricted</b>				
MHCLG fund	212,306	194,905	(179,472)	227,739
Resettlement Fund	8,615	-	(5,605)	3,010
Beeston Consolidated	-	37,113	(37,113)	-
<b>Total restricted funds</b>	<u>220,921</u>	<u>232,018</u>	<u>(222,190)</u>	<u>230,749</u>
<b>Total funds</b>	<u>426,236</u>	<u>380,098</u>	<u>(381,651)</u>	<u>424,683</u>

## Midlands Women's Aid

### Notes to the Financial Statements for the Year Ended 31 March 2025

#### 14 Fees payable to independent examiner

During the period, the fees payable (excluding VAT) to the charity's independent examiner Community Accounting Plus are analysed as follows:

	2025 £	2024 £
Independent examination	1,355	1,300
Other financial services	-	80

#### 15 Trustees remuneration and expenses

No trustees, nor any persons connected with them, have received any remuneration from the charity during the year.

No trustees have received any reimbursed expenses or any other benefits from the charity during the year.

#### 16 Related party transactions

There were no related party transactions in the year.

#### 17 Taxation

The charity is a registered charity and is therefore exempt from corporation taxation.

#### 18 Charity status

The charity is a company limited by guarantee and consequently does not have share capital. Each of the trustees is liable to contribute an amount not exceeding £1 towards the assets of the charity in the event of liquidation.