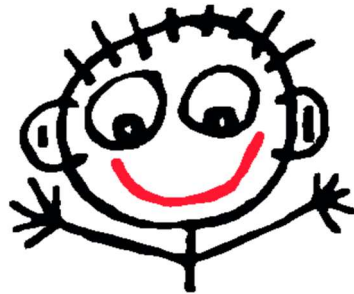


CYLCH MEITHRIN



YR EGLWYS NEWYDD

CYLCH MEITHRIN YR EGLWYS NEWYDD

**REPORT AND ACCOUNTS
FOR THE YEAR ENDED 31ST MARCH 2024**

**C Management Services
69 Velindre Road
Whitchurch
Cardiff
CF14 2TF**

CYLCH MEITHRIN YR EGLWYS NEWYDD
FOR THE YEAR ENDED 31ST MARCH 2024

CHARITY INFORMATION

Trustees:	Bethan McMenemy Nia McQueen Andrea Hodgson (from 10 th July 2023)
Charitable position:	Charitable Incorporate Organisation no. 1179109
Governing Document:	Foundation Constitution dated 9/7/18
Address for correspondence:	Cylch Meithrin yr Eglwys Newydd The Scout Hut Penlline Road Whitchurch CARDIFF CF14 2AD
Independent Examiner:	Paul Burnell ACMI C Management Services 69 Velindre Road Whitchurch CARDIFF CF14 2TF
Bankers:	National Westminster Bank Plc CAF Bank Plc

CONTENTS

	Page
Charity Information	2
Trustees Report	3-5
Independent Examiners Report	6
Statement of Financial Activities	7
Statement of Assets and Liabilities	8
Notes to the Accounts	9

REPORT OF THE TRUSTEES

FOR THE YEAR ENDED 31st MARCH 2024

The Trustees have the pleasure in submitting the Report and Accounts for the year to 31st March 2024.

Structure, Governance and Management

Nature of organisation

The charity is constituted as an unincorporated charitable organisation. It was formed and registered with the Charity Commission on 15th May 1996 (number 1055368).

Appointment of Trustees

New trustees are appointed by existing trustees, who keep the composition of the trustee body under review to ensure that it includes sufficient people with the time and expertise to manage the charity effectively.

Income

The income of the charity arises mainly from (a) payments for sessions either directly from parents/carers or from the local authority and (b) fundraising activities. The charity has not made applications for grant funding from other institutions in support of their activities during 2023-2024.

Risk Management

The charity is committed to ongoing assessment of the risks to which it is exposed and is confident that it has a reporting system in place which advises on a regular basis of any potential risks to enable them to mitigate as appropriate.

The insurance requirements of the charity are reviewed annually to ensure all prospective liability situations are adequately covered.

Organisational Structure

The Trustees are responsible for all aspects of Cylch Meithrin yr Eglwys Newydd, working with other parents on a committee who bring different skills and knowledge and who offer their time on a voluntary basis. We also work closely with the staff team, often having joint meetings to discuss nursery issues.

Responsibility of the Trustees

Charity law requires the Trustees to prepare financial statements for each accounting year which give a true and fair view of the state of the charity and of its income and expenditure for the year.

We are required to:

1. Select suitable accounting policies and apply them consistently
2. Make judgements and estimates that are reasonable and prudent

3. State whether the applicable accounting standards have been followed, subject to any material departures disclosed and explained in the accounts
4. Prepare the financial statements on a going concern basis unless it is inappropriate to presume that the charity will continue in business.

We are responsible for keeping proper accounting records which disclose with reasonable accuracy at any time the financial position of the charity and enable us to ensure that the financial statements comply with the Charities Act 2011. We also have a responsibility to safeguard assets of the charity and to take reasonable steps to prevent fraud or any other irregularities.

Our Aims and Objectives

The object of the charity is the education of pre-school children in Whitchurch through the medium of the Welsh language.

This is done through a variety of activities which are for the public benefit including:

- Stay and Play sessions where parents/guardians are welcome to attend to join in the activities (singing, storytelling).
- Christmas carol signing where the children attended a local care home.
- Regular forest school sessions so the children can learn more about nature and the world around them.
- Following the new curriculum for Wales.
- Child focused planning.
- Emphasis on child wellbeing
- Working closely with the Children's Commissioner for Wales.

Public Benefit Requirement

In planning the activities, the Trustees have applied the guidance issued by the Charity Commission on public benefit in December 2008.

Plans for Future Periods

We are preparing to move the Cylch to a permanent site at Melin Gruffydd school in Q1 2025 after funding was approved by the Welsh Government in Q4 2023.

Independent Examiner

Paul Burnell of C Management Services was appointed as the organisation's independent examiner during the year.

This Report was approved by the Trustees on 15th May 2024 and is signed on their behalf by



Bethan McMenemy (Chair of Trustees)

INDEPENDENT EXAMINERS REPORT
TO THE TRUSTEES OF
CYLCH MEITHRIN YR EGLWYS NEWYDD

I report on the accounts of the Charity for the year ended 31st March 2024, which are set out on pages 4 to 7.

Respective responsibilities of trustees and examiner

The charity's trustees are responsible for the preparation of the accounts. The charity's trustees consider that an audit is not required for this year under section 144(2) of the Charities Act 2011 (the 2011 Act) and that an independent examination is needed.

It is my responsibility to:

- examine the accounts under section 145 of the 2011 Act;
- to follow the procedures laid down in the general Directions given by the Charity Commission under section 145(5)(b) of the 2011 Act; and
- to state whether particular matters have come to my attention.

Basis of independent examiner's report

My examination was carried out in accordance with the general Directions given by the Charity Commission. An examination includes a review of the accounting records kept by the charity and a comparison of the accounts presented with those records. It also includes consideration of any unusual items or disclosures in the accounts, and seeking explanations from you as trustees concerning any such matters. The procedures undertaken do not provide all the evidence that would be required in an audit and consequently no opinion is given as to whether the accounts present a 'true and fair view' and the report is limited to those matters set out in the statement below.

Independent examiner's statement

In connection with my examination, no matter has come to my attention:

(1) which gives me reasonable cause to believe that in any material respect the requirements:

- to keep accounting records in accordance with section 130 of the 2011 Act; and
- to prepare accounts which accord with the accounting records and comply with the accounting requirements of the 2011 Act

have not been met; or

(2) to which, in my opinion, attention should be drawn in order to enable a proper understanding of the accounts to be reached.

Paul Burnell

Paul Burnell ACMI
For and on behalf of:
C Management Services (trading name of C Mgmnt Services Ltd)
69 Velindre Road
Cardiff CF14 2TF

15th May 2024

CYLCH MEITHRIN YR EGLWYS NEWYDD
RECEIPTS AND PAYMENTS ACCOUNT
FOR THE YEAR ENDED 31st MARCH 2024

	Note	Unrestricted Funds £	Restricted Funds £	Total Funds 2024 £	Total Funds 2023 £
RECEIPTS					
<i>Receipts from generated funds</i>		-	-	-	-
<i>Receipts from charitable activities</i>	3	83,291	-	83,291	96,888
<i>Other receipts</i>	4	2,010	-	2,010	81,034
Interest received		1	-	1	
Total Receipts		85,302	-	85,302	177,922
PAYMENTS					
Charitable activities	5	108,171	-	108,171	118,039
Total payments		108,171	-	108,171	118,039
Net Receipts/(Payments)		(22,869)	-	(22,869)	59,883
Transfers between funds		-	-	-	
Fund balances at 1 st April 2023		72,339	-	72,339	7,063
Fund balances at 31 st March 2024		49,470	-	49,470	72,339

The notes on page 6 form part of these accounts.

CYLCH MEITHRIN YR EGLWYS NEWYDD
STATEMENT OF ASSETS AND LIABILITIES
FOR THE YEAR ENDED 31ST MARCH 2024

1. Fixed Assets

	Insurance Value 2024	Insurance Value 2023
	£	£
The value of assets owned are:		
Equipment	<u>10,000</u>	<u>10,000</u>
	10,000	10,000

2. Bank & Cash Balances

	2024	2023
	£	£
Investments	-	-
Cash at bank and in hand	<u>49,470</u>	<u>72,339</u>
	49,470	72,339

3. Other Assets and Liabilities

	2024	2023
	£	£
<i>Assets</i>		
Gift aid tax recovery not yet received	-	-
<i>Liabilities</i>		
Unbilled fee for Independent Examination	200	200

The accounts were approved by the Trustees and signed on their behalf on 15th May 2024 by Bethan McMenemy

B McMenemy

The notes on page 6 form part of these accounts.

CYLCH MEITHRIN YR EGLWYS NEWYDD

**NOTES TO THE ACCOUNTS
FOR THE YEAR ENDED 31ST MARCH 2024**

1. Accounting Policies

The accounts have been prepared on a receipts and payments basis with a statement of assets and liabilities

2. Voluntary receipts

	Unrestricted Funds £	Restricted Funds £	Total 2024 £	Total 2023 £
Donations	-	-	-	-
	-	-	-	-

3. Receipts from charitable activities

Childrens Fees	57,992	-	57,992	60,273
Cardiff Council	25,299	-	25,299	36,615
	83,291	-	83,291	96,888

4. Other Receipts

	Unrestricted Funds £	Restricted Funds £	Total 2024 £	Total 2023 £
Grants	-	-	-	80,000
Fundraising	1,860	-	1,860	1,034
Other income	150	-	150	-
	2,010	-	2,010	81,034

5. Charitable activities

	Unrestricted Funds £	Restricted Funds £	Total 2024 £	Total 2023 £
a. Direct Charitable Costs				
Staff salaries, pensions etc	82,995	-	82,995	92,466
Staff training	420	-	420	960
Equipment & materials	4,859	-	4,859	4,154
Fundraising	100	-	100	850
	88,374	-	88,374	98,430
b. Support and Administration				
Premises costs	17,161	-	17,161	18,005
Professional fees	2,050	-	2,050	1,335
Administration and general expenses	586	-	586	269
	19,797	-	19,797	19,609

6. Staff and Trustees

No remuneration or trustee expenses were paid to any trustee during the year, nor to any person connected to them.