

**REPORT OF THE TRUSTEES AND  
UNAUDITED FINANCIAL STATEMENTS  
FOR THE YEAR ENDED 30 APRIL 2024  
FOR  
THE SARA LEE TRUST**

Manningtons Chartered Accountants  
39 High Street  
Battle  
East Sussex  
TN33 0EE

**THE SARA LEE TRUST**

**CONTENTS OF THE FINANCIAL STATEMENTS  
FOR THE YEAR ENDED 30 APRIL 2024**

---

	<b>Page</b>
<b>Reference and Administrative Details</b>	1
<b>Report of the Trustees</b>	2 to 19
<b>Independent Examiner's Report</b>	20
<b>Statement of Financial Activities</b>	21
<b>Statement of Financial Position</b>	22 to 23
<b>Notes to the Financial Statements</b>	24 to 33
<b>Detailed Statement of Financial Activities</b>	34 to 35

---

**THE SARA LEE TRUST**

**REFERENCE AND ADMINISTRATIVE DETAILS  
FOR THE YEAR ENDED 30 APRIL 2024**

---

**TRUSTEES**

V Goddard (resigned 2/05/2024)  
A Cryar  
D Hargreaves  
M Lear  
M Morton  
P Matthews  
N Histed (resigned 16/07/2024)  
C Chaloner (resigned 13/03/2024)  
A Rose  
K Hughes (resigned 18/5/2023)  
T Lee  
T May (appointed 19/5/2023)

**PRINCIPAL ADDRESS**

25 Upper Maze Hill  
St Leonards on Sea  
East Sussex  
TN38 0LB

**REGISTERED CHARITY  
NUMBER**

1055048

**INDEPENDENT EXAMINER**

Manningtons Chartered Accountants  
39 High Street  
Battle  
East Sussex  
TN33 0EE

## THE SARA LEE TRUST

### REPORT OF THE TRUSTEES FOR THE YEAR ENDED 30 APRIL 2024

---

The trustees present their report with the financial statements of the charity for the year ended 30 April 2024. The trustees have adopted the provisions of Accounting and Reporting by Charities: Statement of Recommended Practice applicable to charities preparing their accounts in accordance with the Financial Reporting Standard applicable in the UK and Republic of Ireland (FRS 102) (effective 1 January 2019).

#### A welcome from our President

The Trust provides essential support and care for people across Hastings and Rother affected by life threatening illness.

Despite the considerable financial challenges faced over the last year, the Trust team continue to support more people with a wider range of services than before.

The completion of a purpose designed hallspace within the year will enable our practitioners to develop further group and community-based activities to support local people and deliver the best patient experience possible.

I am extremely proud to promote and support the important work of the Trust and continue to strive with our Board, Team and supporters to deliver Sara's vision of free and accessible therapy support and care for all those affected by life threatening illness living across Hastings and Rother.

I would like to give a personal note of thanks to our staff and volunteers their continued commitment and support to the Charity and its Trading company.



Michael J Lear  
Trust President

#### OBJECTIVES AND ACTIVITIES TRUST AIMS AND OBJECTIVES

The Sara Lee Trust is an independent local charity which aims to improve the quality of life of people affected by cancer and other life-threatening illnesses in Hastings and Rother (East Sussex), through the provision of psychological and counselling support, complementary therapies and therapeutic group activities. The Trust was established in early 1996.

The Trust's strategic aims are:

To provide, as widely as possible, our free of charge individual and group Counselling and Therapy services to people affected by life threatening illnesses.

To develop our services as needed to ensure equitable access for all, in particular for the more vulnerable groups within our society.

To deliver our care and services in the most appropriate setting for the patient and at a time that best meets their needs.

To ensure that Trust services are supported by long - term sustainable income streams.

The Trust's strategic plan "Improving Care for Local People: 2023-2028" is available from our website: [www.saraleetrust.org](http://www.saraleetrust.org)

## **OBJECTIVES AND ACTIVITIES**

### **OUR ACTIVITIES**

#### **About the Sara Lee Trust**

For nearly 30 years we have worked to improve the quality of life for people affected by cancer and other life-threatening illnesses across Hastings and Rother, East Sussex. Our combined experience and expertise has enabled us to develop a range of psychological and counselling support, complementary and group therapies to benefit and support patients, their carers, family members and loved ones. We are the dedicated provider of psychological support and therapy care services for St Michael's Hospice, a multi-bed palliative care centre in St Leonards-on-Sea (for over 25 years) and the Rye, Winchelsea and District Memorial Hospital (since 2007). The Trust is the only provider of these specialised services in the region.

#### **Our team**

The Trust Team of highly experienced practitioners support almost 800 people per year with the free counselling, therapy care and group support they need to help them through what is often the most difficult time of their life. All Trust practitioners have recognised training in the therapy they provide and have significant experience of working with our patient group.

Whilst ensuring that we comply with local and national guidelines, our flexible model of care is designed to empower the individual, to enable lasting improvement to their wellbeing. We promote the development of long-term connections and supportive networks through individual and / or group activity. Our team provides psychological support including specialist counselling, psychotherapy and Cognitive Behavioural Therapy (CBT), a range of complementary therapies and a growing number of group activities. Care is tailored to the needs of each individual.

#### **How we help**

People affected by life-threatening illness are often at an extremely vulnerable stage in their life, both mentally and physically. They will often feel isolated and marginalised by their illness. Our individual and group support helps people to live with, and increasingly through their illness. Improved confidence and mobility can help service users to be more independent of carers while at the same time enabling them to broaden social networks so that they feel better connected to their community. Because our services are also available to the families and loved ones of patients, they too benefit through the opportunity to process the impact of the diagnosis and potential bereavement.

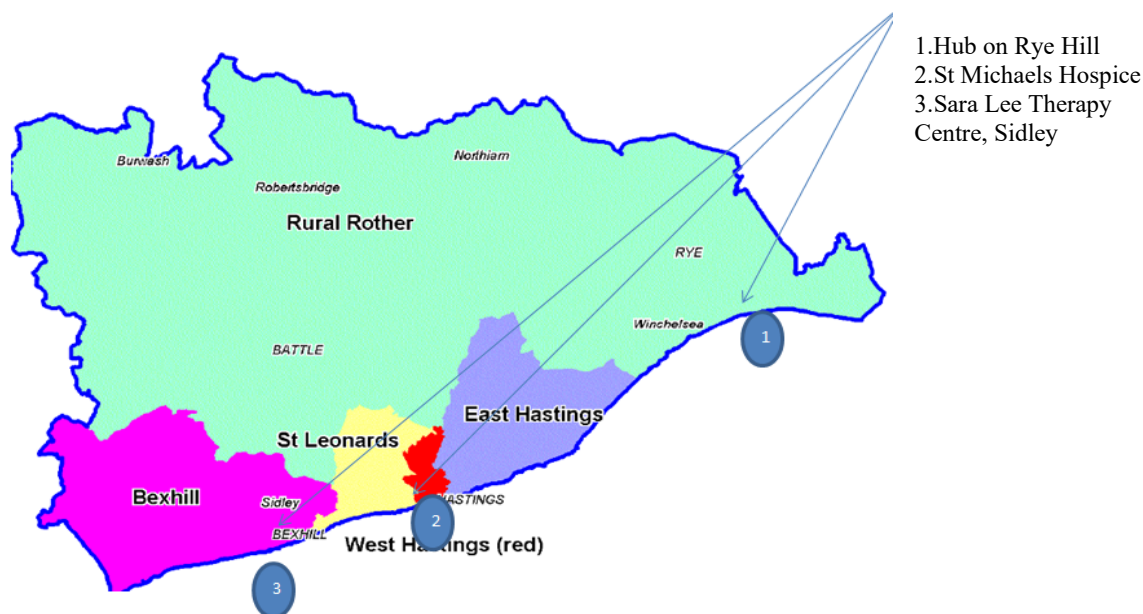
Our services offer some respite from the caring role and its physical and emotional impact. In this broader context, we improve health and well-being in our community by offering more opportunities for employment and volunteering, playing a key role in enhancing community spirit and reducing the burden of care in the wider community generally. When our resources are not available people sometimes struggle without essential care, resulting in deterioration in health and well-being and placing heightened pressure on mainstream health, social care and other services.

## OBJECTIVES AND ACTIVITIES

### LOCAL CONTEXT

The Trust provides essential care and support for people living across Hastings and Rother who are affected by cancer and other life-threatening illnesses. Locally the level of need for this support and care is extreme.

#### Trust Therapy hubs across Hastings and Rother



Hastings and Rother have some of the most socio-economically deprived areas in the country. Bexhill and Hastings are among the most underprivileged towns in Sussex. Many areas locally rank among the 20% of neighbourhoods in England with the highest levels of deprivation. Prevalence rates for cancer are far higher than the national average and many people continue to live with their illness unsupported, resulting in unnecessary suffering and isolation.

Sussex Uncovered 3, a data-led report by Sussex Community Foundation sets out both the needs and strengths of our communities across Sussex. This report highlights the continuing inequality across Sussex and that people in the disadvantaged areas of Sussex are more likely to have shorter lives and poorer health. There is a 14.5 year age gap in male life expectancy and an 18.9 year age gap in female life expectancy between the most and least deprived areas in Sussex. Hastings & Rother contains 10 of the 15 most deprived wards in Sussex and Hastings is ranked the 13th in the country on the same indicator.

The pressure on our services remains very high and, with The Sussex Cancer Alliance predicting increasing local prevalence rates long into the future, this trend will only but continue.

Funding allowing, the Trust is committed to increasing its capacity to meet this extreme level of need.

**ACHIEVEMENT AND PERFORMANCE  
CHAIRMAN'S STATEMENT**

The last financial year was a period of both consolidation and progress for the Trust.

Much focus and energy was directed towards continuing to re-establish our full range of services and activities post the Covid-19 pandemic but our team also worked tirelessly alongside key stakeholders to deliver a purpose designed new hallspace in Sidley. We thank the National Lottery Community Fund in particular for their ongoing support of our work and major contribution towards this latest capital development.

As a result of these efforts, we look forward to the new financial year with confidence and aim to support more local people than ever with a wider range of services and delivered from the best possible settings.

The aim of the Trust is to positively impact the health and wellbeing of people affected by life threatening illness. The internal systems put in place by the Trust team enable effective monitoring of this and I am pleased to say that patient feedback continues to be highly positive.

I would like to thank all of our team and wider stakeholders for their tremendous ongoing efforts in enabling the Trust to have such an important impact for those affected by cancer and life-threatening conditions in Hastings and Rother.

Dr Anita Rose



Sara Lee Centre Hallspace (Sidley, Bexhill-on-Sea), completed in February 2024



**ACHIEVEMENT AND PERFORMANCE  
CHIEF EXECUTIVE'S INTRODUCTION**

The core purpose of the Trust is to improve the lives of local people affected by life threatening illness.

Through our monitoring and evaluation processes we know that our services make a real difference and feedback from our service users remains exceptionally positive and compelling.

Highlights from our latest monitoring and evaluation reports include:

- Over 90% reported improved well-being and confidence
- Almost half indicated reduced use of mental health services
- Over 70% reported an improvement to physical health
- Nearly 60% reported feeling less isolated

In a region where the need for our support is extreme, we continually strive to provide essential care and support for as many people as possible. In response to a 20% increase in referrals in the year, the level of care provided also increased by the same amount to nearly 6,000 hours of therapy and group support in 2023/24. We aim to increase capacity year on year to support more people to better health and wellbeing outcomes and positive lives.

Looking forward our focus will remain centred on our core services and ensuring that we continue to provide high quality services at the right time and place for the individual. In addition, we aim to enhance the scope and range of our group support activities across our therapy hubs.

With a £250,000 annual funding gap to cover existing services, our fundraising and growth challenges are considerable. Incremental steps have already been taken to embrace and integrate new trends, technologies and opportunities alongside existing ones but the path is a long and difficult one.

Our most important asset is our people; all those working for and supporting the Trust to make a difference. With tremendous energy, skills and expertise given by so many I am confident we will meet our funding challenges and continue to support more people year on year.

I thank you for your ongoing support.

Dan Redsull  
Chief Executive Officer



## THE SARA LEE TRUST

### REPORT OF THE TRUSTEES FOR THE YEAR ENDED 30 APRIL 2024

---

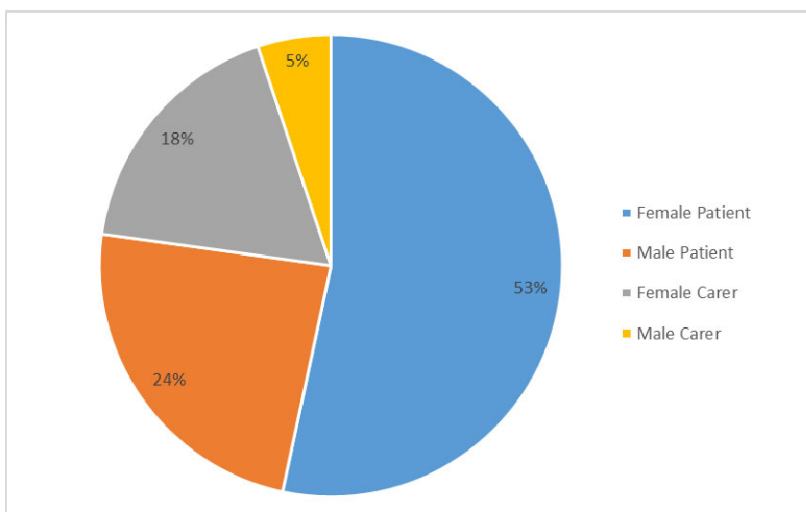
#### FINANCIAL REVIEW THE SARA LEE TRUST PERFORMANCE REPORT SERVICES

##### Service provision and activities

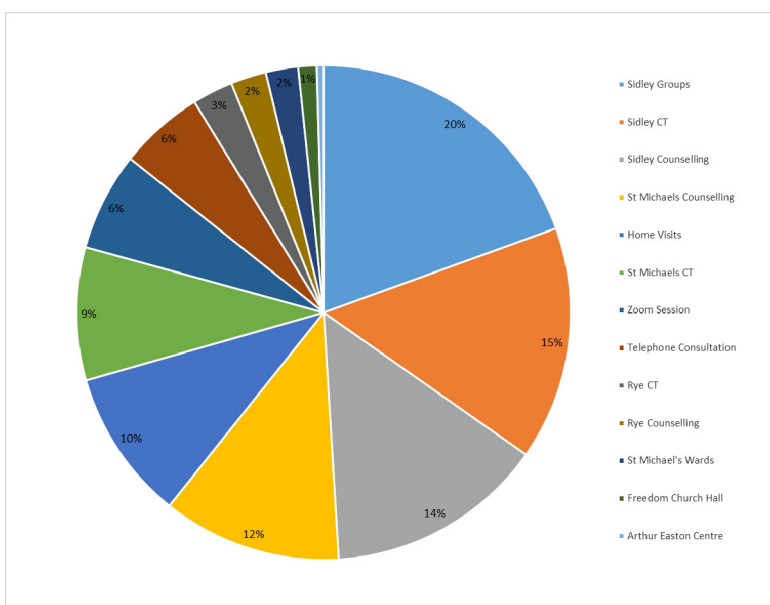
In the financial year 2023/24 the Trust provided 5,782 hours of therapy and activities, an increase of nearly 20% on the previous year. Our services benefited 684 individuals, an increase of 5% from 2022/23.

Over 1,300 referrals were received/generated over the year, up from 1,092 in 2022/23 (an increase of 20%).

##### Provision of therapies by service user

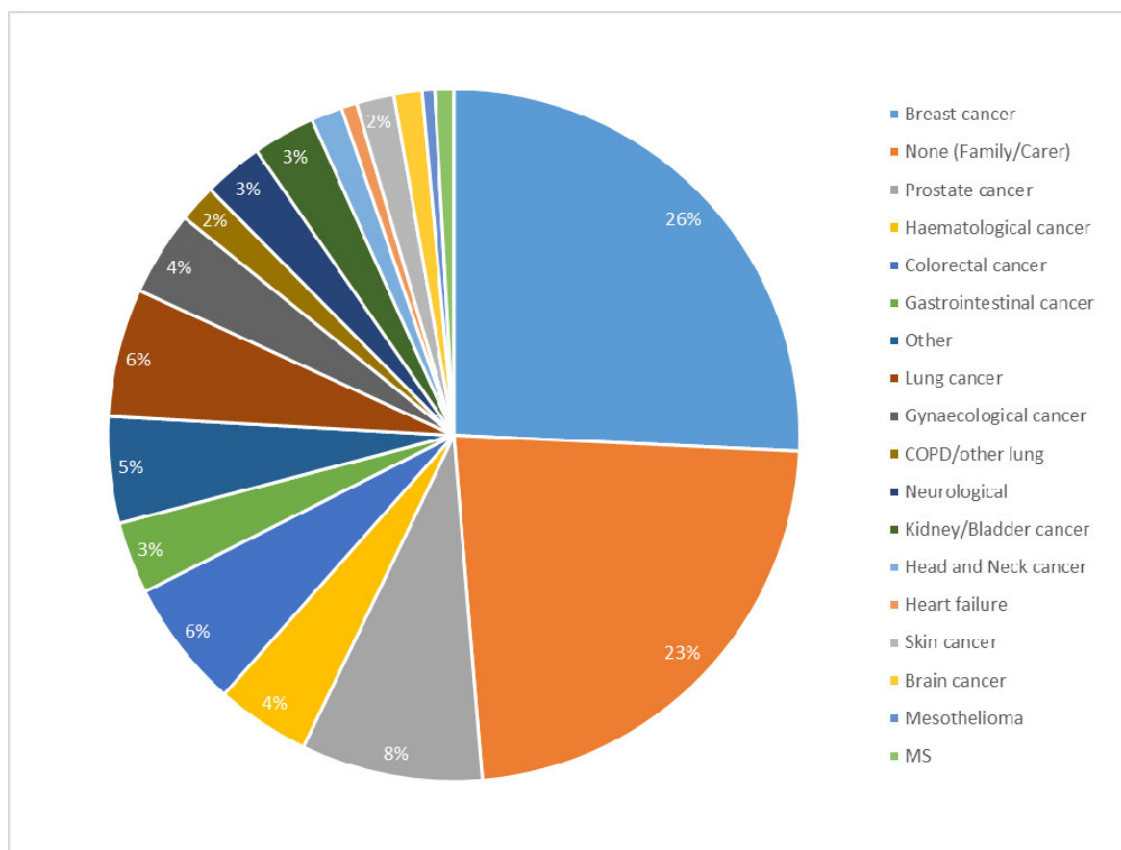


##### Location of therapies and activities



## FINANCIAL REVIEW (continued)

### Provision of therapies and activities by diagnosis



### In Year Developments

#### Highlights

- Both the number of service users supported and activity levels provided increased year on year.
- Remote based services are now fully integrated into our core offering.
- The Trust now offers couples counselling as well as couples massage.
- EMDR (Eye Movement Desensitisation and Reprocessing) a comprehensive psychotherapy is now provided.
- Established group activities including healthy cooking and Look Good Feel Better sessions are as popular as ever.
- Almost 1,000 hours of specialist yoga were delivered over the year
- New group activities were offered in the year including:

Place To Talk – This group provides a relaxed environment where you have the freedom to talk, if you want to. Looking at topics such as: impact of living with a life changing diagnosis, feeling angry, sad, or fearful of treatment, dealing with stress, anxiety or depression.

Shiatsu Self Help – A group that provide a time to slow down, rest and explore a variety of Shiatsu tools and techniques to develop your own self-care and to experience deep relaxation through a variety of mindfulness and meditation practices.

Craft Group – A regular session in our hall space that provides an opportunity not only for service users to participate weekly in a range of structured craft activity including quilting but also to engage in meaningful and valued activities which provide an opportunity to develop new skills, give a sense of achievement, self-efficacy, and confidence.

### **In Year Developments (continued)**

Throughout 2022/23 access to both our Therapy Centre and Hall space was limited due to refurbishment/building development and remedial works. All works were completed by February 2024 with the Trust now able to plan to use its new spaces and additional therapy rooms.

### **Action Plan and Annual Evaluation**

In the coming months we will be analysing the results of our annual service user survey, and undertaking an evaluation process leading to the 2023-2024 Trust Annual Evaluation Report and the 2024-25 Trust Action Plan.

### **USER FEEDBACK AND CASE STUDY**

Examples of service user feedback in 2023/24

- The treatment received was comforting and relaxing. Very hard to understand my current diagnosis but the treatment enabled me to forget where I find myself and immerse in the moment. Thank you.
- After completing treatment, I felt somewhat abandoned. The therapist gave me the feeling someone cared about how I feel.
- This course has been very beneficial to me. The relaxation exercises/activities were invaluable and the manual activities which I would not normally do absorbed me completely so refreshed me for the days ahead.
- The Sara Lee Trust has helped me to move on, become more positive about the future and gain confidence to go out again. I can't thank my counsellor enough for all of her help and support.
- Wonderful complementary therapy, thank you so much.
- D my therapist was very warm and welcoming. She has helped me improve my mobility and having been through this herself it was good that she understood how I felt.
- The massage therapy session with A helps me relieve tension and relax. She is so kind and caring its nice to see her smiling face.
- Excellent knowledgeable capable treatment. Very kind and sympathetic.
- I had reflexology at Sidley and the practitioner B was excellent.
- The three session I had were amazing, very relaxing and an area I had not thought about before. Have booked further reflexology following this.
- Just wanted to say a huge thank you to B for being so brilliant at what she does. Fantastic reflexology and conversations so good. She would make a great counsellor.
- D was friendly and bubbly. Really helped reduce the swelling in my feet and lower legs. This is a new skill that I can use.

### **Case studies and personal stories**

Case studies demonstrating how the Trust has made a difference to the life of an individual and their family through the service it provides. The first case study relates to our Shiatsu therapy and the second our Counselling service.

Names and identifying details have been changed to protect the privacy of the patient and their family.

**REPORT OF THE TRUSTEES  
FOR THE YEAR ENDED 30 APRIL 2024**

---

**Case study continued**

My client was a middle-aged woman who had, 8 months previously, undergone a right sided mastectomy. She had undergone 4 sessions of two different types of chemo 6 months previously and was now undergoing a 5-week course of radiotherapy. She was on related medications and receiving monthly injections. She was suffering from tiredness and soreness in her right shoulder. By nature, a lively and active person, who has rarely rested and had done a busy job, she was keen to be proactive bringing up her family and getting back to work.

Her own aims were to relax and to have some time for herself, that was not cancer treatment and that she could look forward to.

For the first session: I used a relaxation visualisation, whilst doing a therapy technique called Jacob's Ladder, which is a series of holds that progress up the body, over a towel and that are deeply relaxing and warming to the client. These allow the client to relax before any massage takes place. It usually allows the client's breathing to calm and for the client to relax deeply.

On the second session the woman reported to me that the relaxation technique had allowed her to relax during her radiotherapy session and to get to sleep.

The second session was a repeat of the first and the same oil was used. Again my client relaxed deeply.

The third session happened a week after the radiotherapy sessions were complete; so my client could now have the use of essential oils. We did a similar session to before but changed the visualisation, so that she would have different ones to use if necessary. thing was that my client had no side effects from the radiotherapy, during or after the therapy.

During the 4<sup>th</sup> session my client, having been a very sunny and smiley person, told me that she did have bad days and that they could get on top of her and she cried, but she always pulled through. I was able to tell her that many of our clients suffer from side effects from the drugs that they are on. She was suffering some nausea and sickness for a short while. I think some of our techniques helped her with this, and also the massage was giving her the self-confidence to admit how she felt and not always feel that she had to please people. This seemed to give her more confidence.

The 5<sup>th</sup> session included a back and neck massage, as we were sufficiently far from the radiotherapy to cause any pain. We used essential oils. My client relaxed deeply and said she enjoyed having this time to herself.

Our last and 6<sup>th</sup> session was many weeks following the 5<sup>th</sup> as my client had returned to work, and also got a new job. She reported to me that her daughter had come through the stress and worry that she was going through and that our techniques had helped. She, herself, had valued the sessions for: the time to herself, to help her overcome the treatments she had had, that they were relaxing and she always walked away with an extra smile on her face when she left. She felt that the techniques had benefitted her family and she had been able to teach her daughter breathing techniques and also give her husband a foot massage. There were lots of positives from this therapy. From my point of view, I was amazed at how well she coped with her radiotherapy, how she was able to work through the problems that her daughter was encountering and how she adopted the techniques we practised during the massage and used them to help with her wider experience of life. At the same time, I was happy that she had been able to admit that there were times that she was defeated by the disease, but could face up to this, and that our treatments had helped her come through.

A client came to the Trust for counselling, following a diagnosis of cancer. They completed twelve sessions. The focus was mostly on the impact of the treatment given and how this effected their life, exploring the challenges this presented to daily living. We also explored the fear of cancer returning in the future. Counselling provided a safe space in which to explore thoughts, feelings and concerns as they navigated the impact of physical changes due to surgery. This proved really helpful in supporting them through a challenging time, and to help them make sense of feelings about their future.

## **MONITORING AND EVALUATION**

The aim of the Trust is to improve the quality of life of people affected by cancer and other life-threatening illnesses. Effective and robust evaluation ensures that our work is evidence based and quality assured. Our service evaluation underpins all funding applications and has enabled us to successfully secure funding for some key services.

All trust services are subject to evaluation at service user level using standardised templates. Outcome reporting is underpinned by our use of EMIS Web, a nationally recognised patient information system.

Key statistics for 2023/24 (year ending 30 April 2024) include:

### **Improved mental wellbeing**

92% of service users reported improved confidence and wellbeing  
83% reported reduced anxiety and depression  
Almost half (49%) reported reduced use of mental health services

### **Improved physical health**

70% of service users reported an improvement to physical health  
53% reported a reduction in symptoms / side effects  
Almost a third reported a reduced of GP services

### **Increased independence and reduced isolation**

58% of service users reported feeling less isolated  
44% reported being more able to look after themselves  
Over a third reported participating in new social networks and / or making new friends

We will continue to research and develop our reporting systems to ensure that our evidence based information meets best practice and national guidelines.

## THE SARA LEE TRUST

### REPORT OF THE TRUSTEES FOR THE YEAR ENDED 30 APRIL 2024

---

#### FINANCIAL REVIEW

##### FUNDRAISING

Fundraising for the Trust is delivered by a small part – time team of 5 (2.2 whole time equivalent), supported by many wonderful volunteers whom we would like to thank for their fantastic efforts.

Whilst the Trust has and continues to actively develop and progress initiatives aimed at diversifying its income streams and reduce the risk of fluctuations, we remain almost totally reliant on fundraising, donations and retail activities to fund our services. Our annual funding gap is approximately £250,000 which presents a considerable ongoing challenge, especially with the ongoing very difficult financial environment.

We would like to express our sincere thanks and appreciation to all who have supported the Trust over the last year in particular, those who have:

- made a donation / grant
- supported, held or participated in a fundraising event
- become one of our invaluable commercial / community partners

Funds were raised throughout the year using a variety of means including:

- Various Challenge Events including the Hastings Half Marathon and the London Marathon



- An events programme of both Trust and independent activities, which this year were delivered both online and in person. These included: Hastings Beatles Day; Golf Day; Music Events; Fairs and stalls; Open Days; Quizzes; Christmas activities; and individual fundraising activities

- Applications for support to charitable trusts, local businesses and community groups

- Appeals to the local community and general public to support our work by fundraising, donating to our charity shops and remembering us in their will

##### Key highlights:

- An incredible will gift of over £87,000 from the estate of Jane Rosser

- A major one-off donation from the Nina Blanch Charitable Trust of over £26,000

- Hastings Beatles Day raised £17,700 as well as increasing awareness of The Sara Lee Trust.

- Successful Christmas concert with award-winning Jazz artist Liane Carroll raised over £3,600

- Golf Day at Cooden Beach Golf Club raised £9,663



## THE SARA LEE TRUST

### REPORT OF THE TRUSTEES FOR THE YEAR ENDED 30 APRIL 2024

---

#### FINANCIAL REVIEW (continued)

- Drag Bingo! The first event sold out and raised over £2,000 with plans to hold more throughout the year
- Continued extensive support from partner charitable trusts & foundations
- Increased local awareness of The Trust through large events and increased publicity and marketing.
- Development of new and continued community and local business relationships.



## THE SARA LEE TRUST

### REPORT OF THE TRUSTEES FOR THE YEAR ENDED 30 APRIL 2024

---

#### FINANCIAL REVIEW (continued) CHARITY RETAIL

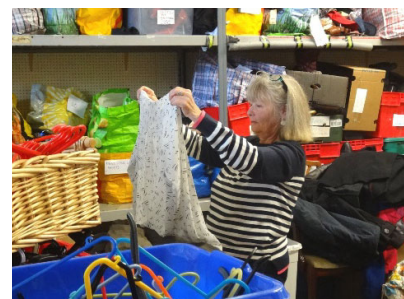
Our charity retail is entirely reliant on the generous donation of items to sell and we would like to give thanks to everyone supporting our retail activities including those who have:

- Donated goods
- Supported us through house clearances
- Recommended others to donate / use our clearance services
- Provided shop fittings and equipment

The Trust Retail Team operate 5 charity shops across Hastings & Rother and have an online presence on a number of platforms including ebay. Overall income is enhanced by our Van and Donation Centre Team through specialist sales, direct / online sales and a house clearance service.

#### Key highlights:

- targets exceeded in several key areas including shop sales, retail online, specialist sales and sales generated by our Donation Centre
- Carried out record levels of Caring Clearance services
- Expanded the capacity and skill mix of our Van and Donation Centre team
- Invested in additional capacity to support the growth of online sales



Our annual donation to the Trust was just under £125k which although in part is supported by one off grant income, reflects the hard work and wonderful efforts of the whole retail team in particular our amazing volunteer supporters to whom we give our immense thanks.

Looking forward, our Retail Team will be focused on increasing donations, improving sales and enhancing the customer experience across our existing shops, sales platforms and operations. In addition, we will be looking to introduce giving through Gift Aid in 2025/26.

Retail has its own dedicated website, facebook page and ebay shop.

Facebook

<https://www.ebay.co.uk/usr/saraleetrustretail>



**FINANCIAL REVIEW (continued)  
FINANCE**

The financial climate remains extremely challenging and, like many other charities, we have had to make many difficult decisions about prioritising spend and introducing cost cutting initiatives.

In March 2023, in recognition of these ongoing pressures, our Board of Trustees approved a revised four-year budget plan that targeted recovery and momentum building whilst taking account of the increased risk to future funding levels and increased operating costs. Our aim was to reach a sustainable breakeven position by 2026 and to limit the annual deficits before that position is reached. Deficit positions would need to be funded through cost management given our exhausted contingency reserves post Covid.

The receipt in April 2024 of two one-off major donations means that the Trust ended the financial year with a non-recurrent surplus of £208,616 with income of £607,634 against expenditure of £399,018. These late donations will be used to reduce risk to our services by rebuilding our emergency reserves to a minimum level as well as supporting further diversification of our income streams. Additional support will also be provided for the development of group activities from our new hallspace.

Looking forward, our underlying financial position has not changed – in order to avoid interim cost cutting measures which would be detrimental to therapy capacity and patient care we need to secure additional funding support whilst we rebuild our fundraising activities.

**FINANCIAL REVIEW (continued)  
RESERVES**

The level and application of reserves are subject to a full review at least on an annual basis. It is the current policy of the Trust that under normal circumstances, unrestricted funds which have not been designated for a specific use should be maintained at a level equivalent to approximately 8 months of recurrent operational expenditure (i.e. £267,302). In the current operating environment, the Trustees consider that reserves at this level will ensure that, in the event of a significant drop in funding, they will be able to continue the Trust's activities and maintain current service capacity while consideration is given to ways in which additional funds may be raised.

In addition, under normal circumstances a further reserve should be maintained to ensure that sufficient resources are available to properly maintain Trust fixed assets in the event of a significant drop in funding. This is to be maintained at a level of 2.5% of our fixed property assets total (2023/4: £1.55m) which equates to £38,000.

Therefore, our cash and bank reserves at year end of £305,303 have been fully ring-fenced for the operational provisions as referred to above.

The Board has a long-term objective of rebuilding operational contingency reserves to a level equivalent to 9 months annual expenditure in addition to maintaining a capital maintenance reserve.

As at the 30<sup>th</sup> April 2024, the Trust held no other uncommitted reserves or balances.

**SERVICE USER & PUBLIC PARTICIPATION AND INVOLVEMENT (PPI)**

The Trust is committed to involving users in the development of its policies and services. It has a core belief that user involvement and engagement is essential to providing services that best meet user needs. Users of Trust services play an active and leading role in the planning of service improvements and assisting in wider developments within the organisation.

Our independent Service User Group continues to contribute their thoughts and ideas across many important areas.

As well as our Service User Group (SUG), existing and former service users are actively engaged in a number of other important Trust forums, committees and initiatives including our Board of Trustees, The National Lottery Community Fund Project Board and Volunteer Forum.

## THE SARA LEE TRUST

### REPORT OF THE TRUSTEES FOR THE YEAR ENDED 30 APRIL 2024

---

#### FINANCIAL REVIEW (continued)

##### A note from the SUG Chair - Jo Moore

Hello everyone,

I have been a member of the Service User Group for approximately 9/10 years now.

My journey began with the Trust as a carer for my father who was terminally ill. Sara Lee supported me through providing complementary therapies and counselling. I shall be forever grateful for the help I received.

We meet every 3 months with Dan our CEO and other staff members, when we have an opportunity to have a say in the operational and strategic development of the Trust. In other words....we can help to shape and improve their services through sharing our own ideas, personal experiences and our opinions on their plans. At present **the trust would appreciate input into how we use our lovely new hallspace and how to develop group activities.** Members feedback is incredibly important to the trust so we are a highly valued part of the 'team'.

The group is always welcoming and our meetings are inclusive and friendly. We are very keen to recruit new members at the moment so, if you have received help from the trust and would like to become involved, please do contact us.

Susan

**SUG@saraleetrust.org**



#### VOLUNTEER SUPPORT

The Trust was founded by volunteers in 1996 and they have been the foundation stone of the organisation ever since. They are involved in a wide range of activities across the charity; from therapy care to charity retail.

For some volunteering is a one-off activity, others choose to make a long-term commitment. We are grateful to each and every person who gives their time to make a difference for those affected by life-threatening illness.

We have almost 200 active volunteers from across Hastings and Rother bringing a wide range of backgrounds, occupations, knowledge, life experiences and skills.

##### Training and support

We are proud of the high standard of training and support we provide to our volunteers. This includes regular online meetings for information sharing and training and more social events. All volunteers are in regular contact with our staff team and those supporting our services are offered one-to-one supervision sessions to manage their own wellbeing.

##### Impact

Volunteer support is critical to the work of the Trust. Without the tremendous efforts that are provided each and every working day across the Trust we simply would not be able to provide the level of care that we do.

##### Involvement and Engagement

We actively encourage regular feedback from volunteers as well as involvement in our decision-making processes. We have an established Volunteer Committee and Annual Volunteer survey in addition to regular volunteer team meetings.

## THE SARA LEE TRUST

### REPORT OF THE TRUSTEES FOR THE YEAR ENDED 30 APRIL 2024

---

#### FINANCIAL REVIEW (continued)

Here is some of feedback from our last survey highlighting why people volunteer for the Trust:

*Great place to volunteer. It feels like a big family and there's never dull moment*

*It is very rewarding knowing funds are going to cancer medication. All staff very friendly.*

*Gives me a sense of value to the Community for which we help and also raising the awareness of what we as a Trust are volunteering for.*

*Friendly and respectful.*

*The 2 managers at my store, show their appreciation of my time. The annual Christmas gathering, fully paid for & awards of recognition are a great way to thank volunteers.*

*Meeting people - nice place to work*

*Friendly caring Good camaraderie*

*The one that I volunteer in is a great and the manageress is fantastic*

#### EVALUATION AND PRIORITIES

The aim of our annual evaluation is to step back, reflect on the year, and learn from our experiences and the information obtained, to make our services and support activities more effective and efficient in the longer term. An annual evaluation report is published which:

- summarises the evaluation process
- highlights key findings
- and communicates the resulting action plan

The action plan serves as a road map in the ongoing monitoring process for the year ahead, and a benchmark against which to evaluate our progress at the end of the year.

All stakeholders including staff, service users (including family members and carers), volunteers, local partners and the wider local community are actively involved in the monitoring and evaluation processes through a variety of forums, regular events and feedback mechanisms which include:

Service User Group  
Annual Service User Survey  
Focus group reviews  
Annual Evaluation workshops  
Feedback forms and case studies

The Evaluation Report and related action plan is published at the end of each calendar year.

#### TRUSTEES

The Trust currently has a total of 8 Trustees. All Trustees are mindful of their responsibilities regarding the appointment and training of new Trustees. Presently, the need for new Trustees is discussed amongst existing Trustees with, when a need is agreed, potential candidates being identified through existing networks or by external advertisement.

**THE SARA LEE TRUST**

**REPORT OF THE TRUSTEES  
FOR THE YEAR ENDED 30 APRIL 2024**

---

**TRUSTEES (continued)**

Shortlisted candidates are interviewed and the successful candidates undergo a comprehensive induction where they meet key members of the Trust and are introduced to all aspects of the Trust's work. Each new Trustee is provided with a summary of the responsibilities of a new Trustee.

**STRUCTURE, GOVERNANCE AND MANAGEMENT**

**Governing document**

The charity is controlled by its governing document, a deed of trust and constitutes an unincorporated charity.

**Risk Management**

The trustees have a duty to identify and review the risks to which the charity is exposed and to ensure appropriate controls are in place to provide reasonable assurance against fraud and error.

Approved by order of the board of trustees on 20th October 2024 and signed on its behalf by:



.....  
Trustee – A Rose

**INDEPENDENT EXAMINER'S REPORT TO THE TRUSTEES OF  
THE SARA LEE TRUST**

---

**Independent examiner's report to the trustees of The Sara Lee Trust**

I report to the charity trustees on my examination of the accounts of The Sara Lee Trust (the Trust) for the year ended 30 April 2024.

**Responsibilities and basis of report**

As the charity trustees of the Trust you are responsible for the preparation of the accounts in accordance with the requirements of the Charities Act 2011 ('the Act').

I report in respect of my examination of the Trust's accounts carried out under Section 145 of the Act and in carrying out my examination I have followed all applicable Directions given by the Charity Commission under Section 145(5)(b) of the Act.

**Independent examiner's statement**

Since your charity's gross income exceeded £250,000 your examiner must be a member of a listed body. I can confirm that I am qualified to undertake the examination because I am a member of the Association of Chartered Certified Accountants, which is one of the listed bodies.

I have completed my examination. I confirm that no material matters have come to my attention in connection with the examination giving me cause to believe that in any material respect:

1. accounting records were not kept in respect of the Trust as required by Section 130 of the Act; or
2. the accounts do not accord with those records; or
3. the accounts do not comply with the applicable requirements concerning the form and content of accounts set out in the Charities (Accounts and Reports) Regulations 2008 other than any requirement that the accounts give a true and fair view which is not a matter considered as part of an independent examination.

I have no concerns and have come across no other matters in connection with the examination to which attention should be drawn in this report in order to enable a proper understanding of the accounts to be reached.



R Walsh FCCA

Manningtons Chartered Accountants  
39 High Street  
Battle  
East Sussex  
TN33 0EE

Date: 18.10.24

**THE SARA LEE TRUST**

**STATEMENT OF FINANCIAL ACTIVITIES  
FOR THE YEAR ENDED 30 APRIL 2024**

		<b>Unrestricted funds</b>	<b>Restricted funds</b>	<b>2024 Total funds</b>	<b>2023 Total funds</b>
	<b>Notes</b>	<b>£</b>	<b>£</b>	<b>£</b>	<b>£</b>
<b>INCOME AND ENDOWMENTS FROM</b>					
Donations and legacies	2	226,725	152,732	79,457	519,311
Other trading activities	3	90,939	72,161	163,100	67,532
Investment income	4	56,219	-	56,219	58,513
Other income		8,858	-	8,858	8,860
<b>Total</b>		<b>382,741</b>	<b>137,784</b>	<b>607,634</b>	<b>654,216</b>
<b>EXPENDITURE ON</b>					
Raising funds		77,397	-	77,397	77,656
<b>Charitable activities</b>	5				
General		267,399	54,222	321,621	299,474
<b>Total</b>		<b>344,796</b>	<b>54,222</b>	<b>399,018</b>	<b>377,130</b>
<b>NET INCOME</b>		<b>37,945</b>	<b>170,671</b>	<b>208,616</b>	<b>277,086</b>
<b>RECONCILIATION OF FUNDS</b>					
Total funds brought forward		1,414,270	344,952	1,759,222	1,482,136
<b>TOTAL FUNDS CARRIED FORWARD</b>		<b>1,452,215</b>	<b>515,623</b>	<b>1,967,838</b>	<b>1,759,222</b>

The notes form part of these financial statements

**THE SARA LEE TRUST****STATEMENT OF FINANCIAL POSITION  
30 APRIL 2024**

---

		<b>2024</b>	<b>2023</b>
	<b>Notes</b>	<b>£</b>	<b>£</b>
<b>FIXED ASSETS</b>			
Tangible assets	10	<b>20,597</b>	19,323
Investment property	11	<u><b>1,551,891</b></u>	<u>1,514,007</u>
		<b>1,572,488</b>	1,533,330
 <b>CURRENT ASSETS</b>			
Debtors	12	<b>132,978</b>	140,667
Cash at bank and in hand		<u><b>305,303</b></u>	<u>162,428</u>
		<b>438,281</b>	303,095
 <b>CREDITORS</b>			
Amounts falling due within one year	13	<u><b>(42,931)</b></u>	<u>(77,203)</u>
 <b>NET CURRENT ASSETS</b>		<u><b>395,350</b></u>	<u>225,892</u>
 <b>TOTAL ASSETS LESS CURRENT LIABILITIES</b>		<u><b>1,967,838</b></u>	<u>1,759,222</u>
 <b>NET ASSETS</b>		<u><u><b>1,967,838</b></u></u>	<u><u>1,759,222</u></u>

The notes form part of these financial statements



# THE SARA LEE TRUST

## STATEMENT OF FINANCIAL POSITION - continued 30 APRIL 2024

		2024	2023
	Notes	£	£
<b>FUNDS</b>	15		
Unrestricted funds:			
General fund		131,486	253,541
Contingency Fund - Operational Activities		262,000	140,000
Designated Fund - Fixed Assets		950,729	950,729
Revaluation Reserve		70,000	70,000
Maintenance fund		38,000	-
		<u>1,452,215</u>	<u>1,414,270</u>
Restricted funds:			
Shop Donations		-	1,000
Ted Baker		2,000	-
Ernest Kleinwort		7,417	-
Sussex Community Foundation		9,798	3,132
Capitalised - Therapy Centre		110,816	58,716
Hastings Lions		-	1,100
The Albert Hunt Trust		3,333	-
Sussex Masonic Charities		-	10,000
Big Lottery Fund Grant		27,387	592
The Francis & Eric Ford Charity Trust		500	-
I Know How		11,388	5,003
Miscellaneous applications		-	5,000
JACT		1,500	250
The National Lottery Community Fund -		236,152	225,159
RC London and South East Region			
The League of Friends of Bexhill Hospital		-	35,000
Edward Gostling Foundation		25,000	-
Bernard Sunley		15,000	-
Legacy J Rosser		65,332	-
		<u>515,623</u>	<u>344,952</u>
<b>TOTAL FUNDS</b>		<u><u>1,967,838</u></u>	<u><u>1,759,222</u></u>

The financial statements were approved by the Board of Trustees and authorised for issue on 17th October 2024 and were signed on its behalf by:



Trustee – Debbie Hargreaves

The notes form part of these financial statements

NOTES TO THE FINANCIAL STATEMENTS  
FOR THE YEAR ENDED 30 APRIL 2024

---

1. ACCOUNTING POLICIES

**BASIS OF PREPARING THE FINANCIAL STATEMENTS**

The financial statements of the charity, which is a public benefit entity under FRS 102, have been prepared in accordance with the Charities SORP (FRS 102) 'Accounting and Reporting by Charities: Statement of Recommended Practice applicable to charities preparing their accounts in accordance with the Financial Reporting Standard applicable in the UK and Republic of Ireland (FRS 102) (effective 1 January 2019)', Financial Reporting Standard 102 'The Financial Reporting Standard applicable in the UK and Republic of Ireland' and the Charities Act 2011. The financial statements have been prepared under the historical cost convention, as modified by the revaluation of certain assets.

**INCOME**

All income is recognised in the Statement of Financial Activities once the charity has entitlement to the funds, it is probable that the income will be received and the amount can be measured reliably.

**EXPENDITURE**

Liabilities are recognised as expenditure as soon as there is a legal or constructive obligation committing the charity to that expenditure, it is probable that a transfer of economic benefits will be required in settlement and the amount of the obligation can be measured reliably. Expenditure is accounted for on an accruals basis and has been classified under headings that aggregate all cost related to the category. Where costs cannot be directly attributed to particular headings they have been allocated to activities on a basis consistent with the use of resources.

**TANGIBLE FIXED ASSETS**

Depreciation is provided at the following annual rates in order to write off each asset over its estimated useful life.

Plant and machinery	- 10% on cost
Fixtures and fittings	- 25% on reducing balance

**INVESTMENT PROPERTY**

Investment property is shown at most recent valuation. Any aggregate surplus or deficit arising from changes in fair value is recognised in the Statement of Financial Activities.

**TAXATION**

The charity is exempt from tax on its charitable activities.

**FUND ACCOUNTING**

Unrestricted funds can be used in accordance with the charitable objectives at the discretion of the trustees, further details on the funds can be found in the Trustees Report.

**THE SARA LEE TRUST**

**NOTES TO THE FINANCIAL STATEMENTS - continued  
FOR THE YEAR ENDED 30 APRIL 2024**

**2. DONATIONS AND LEGACIES**

	Unrestricted funds £	Restricted funds £	2024 Total funds £	2023 Total funds £
Donations	65,239	(2)	65,237	28,499
Gift aid	3,528	-	3,528	4,348
Legacies	33,163	87,109	120,272	23,285
Grants	-	65,625	65,625	348,529
Shop income	124,796	-	124,796	114,650
	<u>226,725</u>	<u>152,732</u>	<u>379,457</u>	<u>519,311</u>

Grants received, included in the above, are as follows:

	2024 £	2023 £
Hastings and Rother CCG	-	26,724
Big Lottery Fund	32,036	51,646
Other Grants	9,589	270,159
Other grants	24,000	-
	<u>65,625</u>	<u>348,529</u>

**3. OTHER TRADING ACTIVITIES**

	Unrestricted funds £	Restricted funds £	2024 Total funds £	2023 Total funds £
Fundraising events	65,439	50,994	116,433	43,199
Charitable trust income	25,500	21,167	46,667	24,333
	<u>90,939</u>	<u>72,161</u>	<u>163,100</u>	<u>67,532</u>

**4. INVESTMENT INCOME**

	Unrestricted funds £	Restricted funds £	2024 Total funds £	2023 Total funds £
Rents received	53,180	-	53,180	56,848
Interest receivable	3,039	-	3,039	1,665
	<u>56,219</u>	<u>-</u>	<u>56,219</u>	<u>58,513</u>

NOTES TO THE FINANCIAL STATEMENTS - continued  
FOR THE YEAR ENDED 30 APRIL 2024

5. CHARITABLE ACTIVITIES COSTS

	Direct Costs £	Support costs (see note 6) £	Totals £
General	<u>311,649</u>	<u>9,972</u>	<u>321,621</u>

6. SUPPORT COSTS

	Information technology £	Governance costs £	Totals £
General	<u>4,772</u>	<u>5,200</u>	<u>9,972</u>

Governance costs includes £1,550 (2023: £1,550) for the Independent examiners fee.

7. TRUSTEES' REMUNERATION AND BENEFITS

There were no trustees' remuneration or other benefits for the year ended 30 April 2024 nor for the year ended 30 April 2023.

The trustee D Hargreaves is a partner in Acuity Professional Partnership LLP who provide accountancy services to The Sara Lee Trust at a significantly discounted cost. A provision of £2,800 (2023: £1,776) has been included within the accounts.

TRUSTEES' EXPENSES

There were no trustees' expenses paid for the year ended 30 April 2024 nor for the year ended 30 April 2023.

KEY MANAGEMENT PERSONNEL REMUNERATION AND EXPENSES

No employees received total employee benefits (excluding pension contributions) of more than £60,000.

	2024	2023
Salaries	258,655	252,622
Key Management Personnel	36,606	34,753
Employer Pension	6,158	5,481
Social security and other tax	<u>13,054</u>	<u>12,448</u>
	<u>314,473</u>	<u>290,345</u>

NOTES TO THE FINANCIAL STATEMENTS - continued  
FOR THE YEAR ENDED 30 APRIL 2024

8. STAFF COSTS

The average monthly number of employees during the year was as follows:

	2024	2023
Support staff	2	2
Fundraising staff	5	5
Therapy staff	<u>11</u>	<u>16</u>
	<u>18</u>	<u>23</u>

No employees received emoluments in excess of £60,000.

9. COMPARATIVES FOR THE STATEMENT OF FINANCIAL ACTIVITIES

	Unrestricted funds £	Restricted funds £	Total funds £
<b>INCOME AND ENDOWMENTS FROM</b>			
Donations and legacies	170,782	348,529	519,311
Other trading activities	51,199	16,333	67,532
Investment income	58,513	-	58,513
Other income	<u>8,860</u>	<u>-</u>	<u>8,860</u>
<b>Total</b>	<u>289,354</u>	<u>364,862</u>	<u>654,216</u>
<b>EXPENDITURE ON</b>			
Raising funds	77,656	-	77,656
<b>Charitable activities</b>			
General	<u>211,283</u>	<u>88,191</u>	<u>299,474</u>
<b>Total</b>	<u>288,939</u>	<u>88,191</u>	<u>377,130</u>
<b>NET INCOME</b>	415	276,671	277,086
<b>RECONCILIATION OF FUNDS</b>			
Total funds brought forward	<u>1,413,855</u>	<u>68,281</u>	<u>1,482,136</u>
<b>TOTAL FUNDS CARRIED FORWARD</b>	<u>1,414,270</u>	<u>344,952</u>	<u>1,759,222</u>

NOTES TO THE FINANCIAL STATEMENTS - continued  
FOR THE YEAR ENDED 30 APRIL 2024**10. TANGIBLE FIXED ASSETS**

	<b>Plant and machinery £</b>	<b>Fixtures and fittings £</b>	<b>Totals £</b>
<b>Cost</b>			
At 1 May 2023	42,300	17,240	59,540
Additions	<u>3,714</u>	<u>119</u>	<u>3,833</u>
At 30 April 2024	<u>46,014</u>	<u>17,359</u>	<u>63,373</u>
<b>Depreciation</b>			
At 1 May 2023	29,366	10,851	40,217
Charge for year	<u>1,830</u>	<u>729</u>	<u>2,559</u>
At 30 April 2024	<u>31,196</u>	<u>1,580</u>	<u>42,776</u>
<b>Net book value</b>			
At 30 April 2024	<u>14,818</u>	<u>5,779</u>	<u>20,597</u>
At 30 April 2023	<u>12,934</u>	<u>6,389</u>	<u>19,323</u>

**11. INVESTMENT PROPERTY**

	<b>£</b>
<b>Fair value</b>	
At 1 May 2023	1,514,007
Additions	<u>37,884</u>
At 30 April 2024	<u>1,551,891</u>
<b>Net book value</b>	
At 30 April 2024	<u>1,551,891</u>
At 30 April 2023	<u>1,514,007</u>

The value of the property was considered by the Trustees at year end and found to be reasonable.

A revaluation of the investment property at Silverhill was assessed by the trustees during the year 2017.

**THE SARA LEE TRUST**

**NOTES TO THE FINANCIAL STATEMENTS - continued  
FOR THE YEAR ENDED 30 APRIL 2024**

**12. DEBTORS**

	<b>2024</b>	<b>2023</b>
	<b>£</b>	<b>£</b>
Amounts falling due within one year:		
Trade debtors	1,772	1,148
Prepayments and accrued income	<u>12,767</u>	<u>1,537</u>
	<u>14,539</u>	<u>2,685</u>
Amounts falling due after more than one year:		
Other debtors	<u>118,439</u>	<u>137,982</u>
Aggregate amounts	<u>132,978</u>	<u>140,667</u>

**13. CREDITORS: AMOUNTS FALLING DUE WITHIN ONE YEAR**

	<b>2024</b>	<b>2023</b>
	<b>£</b>	<b>£</b>
Trade creditors	9,089	12,438
Taxation and social security	1,082	5,752
Other creditors	<u>32,760</u>	<u>59,013</u>
	<u>42,931</u>	<u>77,203</u>

**14. ANALYSIS OF NET ASSETS BETWEEN FUNDS**

	<b>Unrestricted funds</b>	<b>Restricted funds</b>	<b>2024 Total funds</b>	<b>2023 Total funds</b>
	<b>£</b>	<b>£</b>	<b>£</b>	<b>£</b>
Fixed assets	17,907	2,690	20,597	19,323
Investments	1,119,132	432,759	1,551,891	1,514,007
Current assets	329,871	108,410	438,281	303,095
Current liabilities	<u>(14,695)</u>	<u>(28,236)</u>	<u>(42,931)</u>	<u>(77,203)</u>
	<u>1,452,215</u>	<u>515,623</u>	<u>1,967,838</u>	<u>1,759,222</u>

NOTES TO THE FINANCIAL STATEMENTS - continued  
FOR THE YEAR ENDED 30 APRIL 2024

## 15. MOVEMENT IN FUNDS

	At 1.5.23 £	Net movement in funds £	Transfers between funds £	At 30.4.24 £
<b>Unrestricted funds</b>				
General fund	253,541	37,945	(160,000)	131,486
Contingency Fund - Operational Activities	140,000	-	122,000	262,000
Designated Fund - Fixed Assets	950,729	-	-	950,729
Revaluation Reserve	70,000	-	-	70,000
Maintenance fund	-	-	38,000	38,000
	<u>1,414,270</u>	<u>37,946</u>	<u>-</u>	<u>1,452,215</u>
<b>Restricted funds</b>				
Shop Donations	1,000	-	(1,000)	-
Ted Baker	-	2,000	-	2,000
Ernest Kleinwort	-	7,417	-	7,417
Sussex Community Foundation	3,132	6,666	-	9,798
Capitalised - Therapy Centre	58,716	-	52,100	110,816
Hastings Lions	1,100	-	(1,100)	-
The Albert Hunt Trust	-	3,333	-	3,333
Sussex Masonic Charities	10,000	-	(10,000)	-
Big Lottery Fund Grant	592	26,795	-	27,387
The Francis & Eric Ford Charity Trust	-	500	-	500
I Know How	5,003	6,385	-	11,388
Miscellaneous applications	5,000	-	(5,000)	-
JACT	250	1,250	-	1,500
The National Lottery Community Fund - RC London and South East Region	225,159	10,993	-	236,152
The League of Friends of Bexhill Hospital	35,000	-	(35,000)	-
Edward Gostling Foundation	-	25,000	-	25,000
Bernard Sunley	-	15,000	-	15,000
Legacy J Rosser	-	65,332	-	65,332
	<u>344,952</u>	<u>170,671</u>	<u>-</u>	<u>515,623</u>
<b>TOTAL FUNDS</b>	<u><u>1,759,222</u></u>	<u><u>208,616</u></u>	<u><u>-</u></u>	<u><u>1,967,838</u></u>



**NOTES TO THE FINANCIAL STATEMENTS - continued**  
**FOR THE YEAR ENDED 30 APRIL 2024**

**15. MOVEMENT IN FUNDS - continued**

Net movement in funds, included in the above are as follows:

	<b>Incoming resources £</b>	<b>Resources expended £</b>	<b>Movement in funds £</b>
<b>Unrestricted funds</b>			
General fund	382,741	(344,796)	37,945
<b>Restricted funds</b>			
Ted Baker	2,000	-	2,000
Ernest Kleinwort	7,417	-	7,417
Sussex Community Foundation	6,666	-	6,666
The Albert Hunt Trust	3,333	-	3,333
Big Lottery Fund Grant	32,036	(5,241)	26,795
The Francis & Eric Ford Charity Trust	500	-	500
East Sussex CCG	27,204	(27,204)	-
I Know How	6,385	-	6,385
JACT	1,250	-	1,250
The National Lottery Community Fund - RC London and South East Region	10,993	-	10,993
Edward Gostling Foundation	25,000	-	25,000
Bernard Sunley	15,000	-	15,000
Legacy J Rosser	<u>87,109</u>	<u>(21,777)</u>	<u>65,332</u>
	<u>137,784</u>	<u>(32,445)</u>	<u>170,671</u>
<b>TOTAL FUNDS</b>	<u><u>607,634</u></u>	<u><u>(399,018)</u></u>	<u><u>208,616</u></u>

NOTES TO THE FINANCIAL STATEMENTS - continued  
FOR THE YEAR ENDED 30 APRIL 2024

## 15. MOVEMENT IN FUNDS - continued

## Comparatives for movement in funds

	At 1.5.22 £	Net movement in funds £	Transfers between funds £	At 30.4.23 £
<b>Unrestricted funds</b>				
General fund	199,126	415	54,000	253,541
Contingency Fund - Operational Activities	169,000	-	(29,000)	140,000
Contingency Fund - Asset Maintenance	25,000	-	(25,000)	-
Designated Fund - Fixed Assets	950,729	-	-	950,729
Revaluation Reserve	<u>70,000</u>	<u>-</u>	<u>-</u>	<u>70,000</u>
	1,413,855	415	-	1,414,270
<b>Restricted funds</b>				
Shop Donations	1,000	-	-	1,000
Sussex Community Foundation	3,132	-	-	3,132
Capitalised - Therapy Centre	58,716	-	-	58,716
Hastings Lions	1,100	-	-	1,100
Sussex Masonic Charities	-	10,000	-	10,000
Big Lottery Fund Grant	-	592	-	592
Independent Age	4,333	(4,333)	-	-
I Know How	-	5,003	-	5,003
Miscellaneous applications	-	5,000	-	5,000
JACT	-	250	-	250
The National Lottery Community Fund - RC London and South East Region	-	225,159	-	225,159
The League of Friends of Bexhill Hospital	<u>-</u>	<u>35,000</u>	<u>-</u>	<u>35,000</u>
	<u>68,281</u>	<u>276,671</u>	<u>-</u>	<u>344,952</u>
<b>TOTAL FUNDS</b>	<u>1,482,136</u>	<u>277,086</u>	<u>-</u>	<u>1,759,222</u>

**NOTES TO THE FINANCIAL STATEMENTS - continued**  
**FOR THE YEAR ENDED 30 APRIL 2024**

**15. MOVEMENT IN FUNDS - continued**

Comparative net movement in funds, included in the above are as follows:

	<b>Incoming resources £</b>	<b>Resources expended £</b>	<b>Movement in funds £</b>
<b>Unrestricted funds</b>			
General fund	289,354	(288,939)	415
<b>Restricted funds</b>			
Ernest Kleinwort	4,083	(4,083)	-
Sussex Community Foundation	3,333	(3,333)	-
The Albert Hunt Trust	1,667	(1,667)	-
The Pink Ribbon Foundation	2,000	(2,000)	-
Sussex Masonic Charities	10,000	-	10,000
Big Lottery Fund Grant	23,961	(23,369)	592
Independent Age	-	(4,333)	(4,333)
East Sussex CCG	26,723	(26,723)	-
I Know How	27,686	(22,683)	5,003
Miscellaneous applications	5,000	-	5,000
JACT	250	-	250
The National Lottery Community Fund - RC London and South East Region	225,159	-	225,159
The League of Friends of Bexhill Hospital	<u>35,000</u>	<u>-</u>	<u>35,000</u>
	<u>364,862</u>	<u>(88,191)</u>	<u>276,671</u>
<b>TOTAL FUNDS</b>	<u><u>654,216</u></u>	<u><u>(377,130)</u></u>	<u><u>277,086</u></u>

**16. RELATED PARTY DISCLOSURES**

The Trust has a trading company called the Sara Lee Trading Ltd, both entities share some trustees and directors, the following transactions and balances occurred during the year:

- A donation of £124,796 was made from the company.
- Rental income was also received from the company amounting to £53,030.
- There is a loan of £118,479 outstanding from the company.

D Hargreaves, current trustee is a partner of Acuity Professional Partnership LLP who prepare the Trust accounts, further information on this can be found in note 7.

**THE SARA LEE TRUST****DETAILED STATEMENT OF FINANCIAL ACTIVITIES  
FOR THE YEAR ENDED 30 APRIL 2024**

---

	<b>2024</b>	<b>2023</b>
	<b>£</b>	<b>£</b>
<b>INCOME AND ENDOWMENTS</b>		
<b>Donations and legacies</b>		
Donations	65,236	28,499
Gift aid	3,528	4,348
Legacies	120,272	23,285
Grants	65,625	348,529
Shop income	<u>124,796</u>	<u>114,650</u>
	379,457	519,311
<b>Other trading activities</b>		
Fundraising events	116,433	43,199
Charitable trust income	<u>46,667</u>	<u>24,333</u>
	163,100	67,532
<b>Investment income</b>		
Rents received	53,180	56,848
Interest receivable	<u>3,039</u>	<u>1,665</u>
	56,219	58,513
<b>Other income</b>		
Insurance claim	<u>8,858</u>	<u>8,860</u>
<b>Total incoming resources</b>	<b>607,634</b>	<b>654,216</b>
<b>EXPENDITURE</b>		
<b>Other trading activities</b>		
Fundraising events	12,870	10,719
Wages	<u>64,527</u>	<u>66,937</u>
	77,397	77,656
<b>Charitable activities</b>		
Wages	60,179	69,072
Insurance	3,299	4,139
Postage and stationery	2,751	1,796
Advertising	741	1,249
Therapist fees	190,466	173,664
Aromatherapy & housekeeping	23,777	25,763
Carried forward	<u>281,213</u>	<u>275,683</u>

This page does not form part of the statutory financial statements

**THE SARA LEE TRUST****DETAILED STATEMENT OF FINANCIAL ACTIVITIES  
FOR THE YEAR ENDED 30 APRIL 2024**

---

	<b>2024</b>	<b>2023</b>
	<b>£</b>	<b>£</b>
<b>Charitable activities</b>		
Brought forward	<b>281,213</b>	275,683
Staff training	<b>2,800</b>	6,162
Travelling expenses	<b>1,906</b>	2,671
Sundry service costs	<b>2,833</b>	1,006
Premises costs	<b>20,235</b>	4,576
Plant and machinery depreciation	<b>1,830</b>	1,220
Fixtures and fittings depreciation	<b>1,250</b>	2,210
Bank charges	<b>103</b>	161
	<b>311,649</b>	293,689
<b>Support costs</b>		
<b>Information technology</b>		
Computer running costs	<b>4,772</b>	4,117
<b>Governance costs</b>		
Accountancy	<b>2,884</b>	852
Independent examiners fee	<b>972</b>	816
Legal fees	<b>1,344</b>	-
	<b>5,200</b>	1,668
Total resources expended	<b>399,018</b>	377,130
Net income	<b>208,616</b>	277,086

This page does not form part of the statutory financial statements