

Charity registration number 1054622 (England and Wales)

Company registration number 03136727

VENUS WORKING CREATIVELY WITH YOUNG WOMEN

COMPANY LIMITED BY GUARANTEE

ANNUAL REPORT AND FINANCIAL STATEMENTS

FOR THE YEAR ENDED 31 MARCH 2025

**VENUS WORKING CREATIVELY WITH YOUNG WOMEN
COMPANY LIMITED BY GUARANTEE
LEGAL AND ADMINISTRATIVE INFORMATION**

Trustees	Emma Bush (Chair) Pat Reynolds (Vice Chair) Olubunmi Adefajo (Treasurer) Helen Marshall (Safeguarding) Emily Clark Helen Condran Barbara Dutton Jacqueline Marsh	
Secretary	Susan Potts	
Senior management	Susan Potts	Chief executive officer
Charity number (England and Wales)	1054622	
Company number	03136727	
Registered office	The Venus Centre 215 Linacre Lane Bootle L20 6AD	
Auditor	Mitchell Charlesworth (Audit) Limited Suites C,D,E, & F 14th Floor The Plaza 100 Old Hall Street Liverpool L3 9QJ	
Bankers	HSBC Bank Plc 99-101 Lord Street Liverpool Merseyside L2 6PG	

**VENUS WORKING CREATIVELY WITH YOUNG WOMEN
COMPANY LIMITED BY GUARANTEE
CONTENTS**

	Page
Trustees' report	1 - 11
Statement of trustees' responsibilities	12
Independent auditor's report	13 - 15
Statement of financial activities	16 - 17
Balance sheet	18
Statement of cash flows	19
Notes to the financial statements	20 - 38

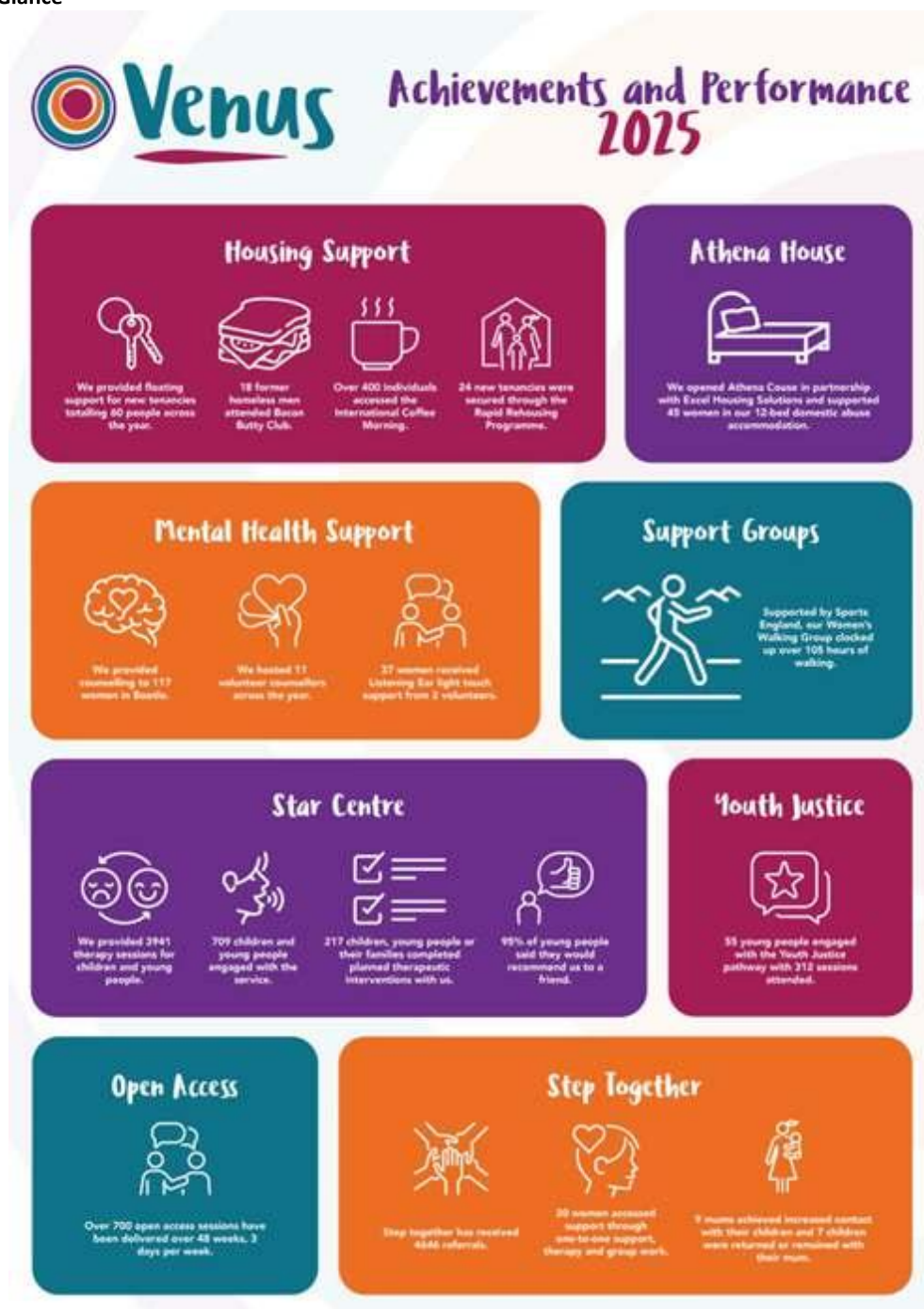
VENUS WORKING CREATIVELY WITH YOUNG WOMEN COMPANY LIMITED BY GUARANTEE TRUSTEES' REPORT (INCLUDING DIRECTORS' REPORT)

FOR THE YEAR ENDED 31 MARCH 2025

The trustees present their annual report and financial statements for the year ended 31 March 2025.

The financial statements have been prepared in accordance with the accounting policies set out in note 1 to the financial statements and comply with the charity's governing document, the Companies Act 2006 and "Accounting and Reporting by Charities: Statement of Recommended Practice applicable to charities preparing their accounts in accordance with the Financial Reporting Standard applicable in the UK and Republic of Ireland (FRS 102)" (effective 1 January 2019).

Our Year at a Glance



**VENUS WORKING CREATIVELY WITH YOUNG WOMEN
COMPANY LIMITED BY GUARANTEE
TRUSTEES' REPORT (INCLUDING DIRECTORS' REPORT) (CONTINUED)
FOR THE YEAR ENDED 31 MARCH 2025**



VENUS WORKING CREATIVELY WITH YOUNG WOMEN COMPANY LIMITED BY GUARANTEE TRUSTEES' REPORT (INCLUDING DIRECTORS' REPORT) (CONTINUED) FOR THE YEAR ENDED 31 MARCH 2025

Charitable Objectives

Our Memorandum and Articles of Association states:

- Venus aims to promote such charitable purposes as the Trustees shall, in their absolute discretion, think fit, including in particular but not so as to limit the generality of the foregoing”.
- The advancement of education and the preservation and protection of health of those young women residing in the area of Sefton, particularly, but not exclusively, in matters relating to sexual health,
- The provision of facilities in the interests of social welfare for recreation and leisure time occupation with the object of improving the condition of life for the said women.

During 2025, we submitted a request to the Charity Commission to amend our articles of association to reflect the changing nature of our programmes. The Charity Commission responded by requesting amendments to our proposal. We are working with Liverpool Council for Voluntary Services (LCVS) to make the necessary changes to the amended articles of association before we resubmit this request in December 2025.

Our Vision and Mission

The Venus Charity Vision is to support the communities we serve to have fulfilling lives and to be resilient.

Our vision is fulfilled through our mission: To work with women, children, young people and families in our community, recognising their choices, voices and opportunities to develop their potential.

We are a value led organisation, and our work is delivered through our Value Framework:

- **Accessible** – An open-door policy
- **Respect** – Consideration and respect for the people we support and for each other
- **Integrity** – Our community is at the heart of what we do, and we work to our values at all times
- **Trust** – We respect confidentiality, and the trust people place in us
- **Fairness** – A fair deal for everyone

Venus works across the Borough of Sefton. Our programmes are co-designed with our service users, ensuring our work is meeting their needs. In the Financial Year 1st April 2024 to 31st March 2025, our programmes included:

- Family services through Early Help, structured support programmes and family triage
- Mental health services for children and young people
- Open Access Advice and Support
- Accommodation and tenancy support to homeless individuals
- Money management and financial literacy
- Emergency food and provisions such as warm clothing
- Resettlement support to asylum seekers and refugees
- Weekly support groups
- Counselling for women
- Services for women with multiple complexities
- Volunteering opportunities

Delivering our aims, objectives, and legal purposes

The Venus Trustees support the delivery of our charitable aims and objectives through ongoing checks and balances and scrutiny of management information, progress reports and financial statements. We hold bi-monthly board meetings and have a number of board sub-groups including a regular finance subgroup meeting. The depth and breadth for our services are demonstrated in easy-to-understand infographics in Section 1.

The trustees have paid due regard to guidance issued by the Charity Commission in deciding what activities the charity should undertake.

VENUS WORKING CREATIVELY WITH YOUNG WOMEN

COMPANY LIMITED BY GUARANTEE

TRUSTEES' REPORT (INCLUDING DIRECTORS' REPORT) (CONTINUED)

FOR THE YEAR ENDED 31 MARCH 2025

Summary of the Year

This financial year has been one of the most challenging for the charity sector. Many trusts and foundations closed their programmes, and we faced uncertainty over the continuation of commissioned services due to the change of government. Charities also needed to be mindful of the rise in employers' National Insurance contributions in April 2025, which meant a significant increase in payroll costs with limited avenues to recoup these within existing grants and commissions.

Amid these circumstances, Venus has continued to innovate and respond to the needs of our community. Practical support has increased; we've introduced new mental health interventions, distributed emergency essentials, and provided enriching wellbeing activities. Our most exciting additions this year are our women's refuge — **Athena House** — and a pilot mental health programme supporting the best start in life for children under five.

We began 2024 with an amazing fundraiser organised by our Trustee and former Chair, **Barbara Dutton**. We enjoyed a music-filled evening at Southport Market with performances by the **Connected Voices Choir**, a raffle sponsored by the **Financial Planning Corporation**, and a speech by the **Lady Mayor of Sefton**. This joyful event deepened our footprint in the north of the Borough, built new relationships with local people, and raised over £2,000 towards our summer programme for families.

Our key achievement this year was the launch of **Athena House** in August 2024 — a 12-room refuge for women with complex needs escaping domestic abuse. We were proud to open the service in partnership with **Excel Housing Solutions**. This innovative project was commissioned by **Sefton Council** through its Domestic and Sexual Abuse Strategy.

As we approached our 30th anniversary in April 2025, we revisited our volunteer-led befriending model — one of our cornerstone services when we launched in 1995. We were supported by the **Women's Fund for Merseyside** to deliver a *Listening Ear* volunteering programme aimed at reducing loneliness and isolation among women in our community.

Supported by the **Rosa Foundation**, we were proud to develop an awareness-raising and advocacy campaign with our *Step Together* clients. Venus commissioned local charity **Twin Vision** to create a collaborative animation highlighting the many stigmas associated with child removal and its long-lasting impact on mothers. The women involved in creating the animation were commended for their bravery in sharing their stories.

In April 2024, we began a two-year pilot advancing our *Family Navigation* support model, aiming to address inequalities for families with children under five. We will learn continuously from this pilot, which is based on the principles of co-design. This work is supported by the **National Lottery Community Fund**.

The pilot runs alongside our new *Video Interaction Guidance (iVIG)* therapeutic programme for parents with babies aged 0–2, launched in January 2025. To take this development forward, we welcomed **Clare Kavanagh** into the role of *Early Years Development Manager*. Led by Clare, we aim to co-design a holistic family support model using strengths-based parenting approaches blended with practical support to avert crisis in the home.

We continued to blend our money management programme with arts and wellbeing. This year, we were supported by the **Euro-Library Fund**, in partnership with *At the Library*, to create the project *Elastic Money*, led by artists **Ruth Beale** and **Amy Feneck** of the *Alternative School of Economics*. *The Lexicon of Debt* is the resulting publication, exploring debt-related language used in the local area.

Our Hub Services enjoyed expanded activities through support from the **Community Impact Fund**, **Warm Hubs (Sefton Council for Voluntary Service)**, **Sport England**, and **The Eleanor Rathbone Trust**. Garnering small grants makes a big impact — this support provided emergency food parcels, developed our women's walking group, and extended open-access advice provision to five days each week.

We are proud of our history of creating opportunities for young people, particularly around workforce development in the voluntary and community sector. In November 2024, with support from **Train 2000 (UCLAN)**, we hosted two *Community Health and Wellbeing Apprentices* who will be with us for 15 months, working across our services to develop their skills (and ours) in social prescribing.

VENUS WORKING CREATIVELY WITH YOUNG WOMEN

COMPANY LIMITED BY GUARANTEE

TRUSTEES' REPORT (INCLUDING DIRECTORS' REPORT) (CONTINUED)

FOR THE YEAR ENDED 31 MARCH 2025

The **Star Centre** continues to be an essential hub in Sefton for mental health support for children and young people. Of note this year was **Liverpool One Foundation's** support for additional *Incredible Years* training and the extension of the course's impact through additional home-coaching support. We were also commissioned by **Sefton Council for Voluntary Service** to create a new designated pathway for care leavers, removing barriers to accessing mental health support as they settle into independent homes.

We've continued our quest to find a new home. This year, we commissioned **Studio Morrison** and **Architype** to help us think creatively about space and how we use it. We developed beautiful plans for our dream home — a stunning place for the community to find joy and sanctuary, along with an improved workplace environment for our dedicated staff and volunteers. In March, we were approached by **Sefton Council** with the offer of an asset transfer of a building with limited capital works. We look forward to embedding the ideas and strategy developed through the Studio Morrison and Architype commission into this exciting opportunity.

Practical Support When It's Needed Most

Supporting Families Programme

In 2024, we entered the final year of the commissioned service *Supporting Families* (originally known as *Troubled Families*). Venus has been commissioned by Sefton Council as part of this Early Help for Families initiative since 2012. Over the past 12 years, we have supported hundreds of families who have been stepped down from a Social Care Order or have needed assistance to avert social care involvement.

This year, we supported 32 families with holistic support led by the voices of the children in the household. A total of 120 individuals were supported through this programme — 46 adults and 74 children and young people under 18. We were delighted to hear in March 2025 that we had been awarded a year-long extension to this contract.

Family Navigation

In 2023, we were supported by the P. H. Holt Foundation to continue our Family Triage service. When this funding ended, we shared our learning with the National Lottery Community Fund, who awarded us two years of funding through the *Awards for All* programme to advance the triage model into a *Family Navigation* model focusing on the best start in life.

Through this project, families can self-refer to Venus, ask for support via our website, enquire at Open Access, or be referred by a worker connected to the family. Families receive up to six weeks of intensive support — practical, emotional/mental health, advocacy, money management, referral to specialist services, or befriending. We received 166 referrals to this service in 2024/2025, and 102 individuals received support.

Step Together

Step Together is a programme that supports mothers whose children have been removed from their care or are at risk of removal. It's a vital service, and we've been grateful to the National Lottery Fund for their support over the past eight years for this unique programme.

This year, we received 46 referrals, of which 20 women completed a full support plan. This resulted in nine women having increased contact with their children and, remarkably, seven children being returned to their mother's care.

Early Years and Best Start in Life

At the beginning of 2025, we invested in the recruitment of an Early Years Development Manager to bridge the gap between the therapeutic work delivered with parents at the Star Centre and the practical support provided by our family support programmes.

This new role was tasked with introducing a service for babies and young children aged 0–2 called *Video Interaction Guidance* (iVIG). iVIG is a strengths-based therapeutic intervention that works alongside parents to help them attune with their child.

VENUS WORKING CREATIVELY WITH YOUNG WOMEN

COMPANY LIMITED BY GUARANTEE

TRUSTEES' REPORT (INCLUDING DIRECTORS' REPORT) (CONTINUED)

FOR THE YEAR ENDED 31 MARCH 2025

Alongside iVIG, we are taking the same integrated approach with the *Incredible Years* intervention for children aged 5–10, using a home-coaching service supported by the Masonic Foundation. The aim of this new approach is to avert crisis situations in the home so that therapeutic programmes can have their best effect. Our Youth Justice programme came to an end in March 2023.

Student Placements

This year, we welcomed nine social work students from Edge Hill University and Liverpool John Moores University. Supporting Open Access were two law students from the University of Liverpool. We also welcomed two Community Health and Wellbeing Apprentices, both aged 18. We're proud to be supporting young people into career pathways within the voluntary sector.

Money Management and Financial Literacy

Debt continues to be a significant household issue in our community. We take referrals to our Money Management Programme from all our services, and residents can also self-refer.

In 2024/2025, we supported 343 people to maximise their income and manage debt. This work was supported by The Financial Planning Corporation (FPC), United Utilities Trust, and Liverpool City Region's Multiply Programme.

Since 2022, we've worked in partnership with arts organisations through our *Moon in Venus* project to help us think differently about our relationship with debt. The programme continued this year, taking up residency in Bootle Library with the School of Alternative Economics, Sefton Library Service, and Arts Council England Portfolio Organisation *At the Library*. This work was supported by the Euro-Library Fund.

Our continued partnership with the Smallwood Trust enabled us to provide £39,957 in small grants directly to women in need. Smallwood grants make a huge difference to women's lives — allowing us to purchase goods, pay off arrears, and alleviate debt. A lot can be learned from this innovative programme if we are to support people out of the poverty trap.

Mental Health Services for Women, Children and Young People

Our mental health services encompass a free-to-access women's counselling service, located at the Venus Centre, and the Star Centre, which provides a range of therapeutic interventions for children and young people.

The women's counselling service is supported by volunteer student placements from a range of local colleges and universities. This year, we hosted 11 student counsellors who provided 117 counselling sessions.

The Star Centre provides a range of services for children and young people, including Person-Centred Therapy, Cognitive Behavioural Therapy (CBT), Eye Movement Desensitisation and Reprocessing (EMDR), and Systemic Family Practice.

We hold a crisis drop-in each Thursday, where young people can attend without an appointment, and a very popular creative drop-in for young people on our waiting list. This year, 68 young people accessed our crisis drop-in and 106 attended the creative drop-in.

During the 2024–2025 financial year, 709 young people engaged with Star Centre services. Of these, 590 accessed two or more therapeutic sessions. There were 3,941 attended sessions (including appointments, groups, and drop-ins). 217 young people completed planned therapeutic interventions — a high number of completions compared to many other services.

Of those who completed paired outcome measures, 55% showed measurable improvement after completing therapy.

Our *Parenting Pathway* offers strengths-based parenting programmes such as iVIG, *Incredible Years*, *Riding the Rapids* (for parents whose children have an autism spectrum disorder diagnosis), and *Cathy Creswell Training* to support the parenting of anxious children.

VENUS WORKING CREATIVELY WITH YOUNG WOMEN

COMPANY LIMITED BY GUARANTEE

TRUSTEES' REPORT (INCLUDING DIRECTORS' REPORT) (CONTINUED)

FOR THE YEAR ENDED 31 MARCH 2025

We were supported by the Liverpool One Foundation to provide additional *Incredible Years* training, along with home coaching, to help parents put their learning into practice.

We also run an outreach programme funded by Merseyside Police's Stonehaven Fund for young people involved in, or at risk of, criminal activity — particularly in relation to County Lines. We recognise that these young people may be fearful of being recognised and may not feel comfortable coming to the Star Centre. Therefore, we offer therapy in a place where each young person feels safe.

Feedback from young people includes:

"It helped me go into school easier and helped with worry techniques."

"I have liked being able to talk to Claire, and it has helped me understand myself more. Getting my feelings out of my head has helped too, even if for only an hour."

"My worries and concerns were validated, and it's nice to feel heard and work with someone who shows real care and interest."

"Learning more coping mechanisms helped me stop myself from going into a meltdown."

"The sessions helped at home with Mum — we talked about running away and social care. We didn't just push it down and not talk about it. The sessions helped me to improve my relationship with Mum and make it even better."

Increased Access to Talking Therapies (IAPT) / Recruit to Train

We are a member of Sefton's IAPT partnership, which aims to develop the children and young people's mental health workforce through traineeships in various modalities. We recruit students annually through this scheme, and their work increases the depth and breadth of our offer at the Star Centre. In 2024/2025, we supported 14 RTT studentships and retained three students from our 2023 intake.

Star Centre Developments

In January 2025, we created a new post — *Autism Spectrum Disorder Development Manager* — to address the sharp rise in the number of children and young people referred to our service with an ASD diagnosis. This new post is tasked with developing our ASD services through an organisation-wide approach, including staff training, the development of appropriate spaces and resources, and the creation of new services based on best practice and local need.

We entered our second year of hosting Additional Roles (ARRs) on behalf of the South Sefton Primary Care Network. We currently host two Children and Young People's Wellbeing Practitioners who offer low-level anxiety and worry management services to children and young people registered with a South Sefton GP.

Support for Homeless People

In May 2024, in partnership with Excel Housing Solutions, we secured a two-year commission from Sefton Council to deliver a trauma-informed refuge service for women with multiple complexities who are escaping domestic abuse.

The service responds to a gap in provision, in line with DLUHC's statutory guidance for the delivery of support to victims of domestic abuse in safe accommodation. Women who have, for example, experienced street homelessness, substance misuse, or poor mental health are often excluded from traditional refuge systems. *Athena House* directly responds to this gap, offering tailored, trauma-informed support to women considered high risk.

Venus provides one-to-one support within *Athena House*, along with an on-site therapist. The refuge opened in August 2024, offering a beautiful living environment with 12 ensuite rooms, which are consistently fully occupied. By the end of March 2025, we had welcomed 45 women into *Athena House* and successfully rehoused six former residents into safe, secure homes with tenancies.

VENUS WORKING CREATIVELY WITH YOUNG WOMEN COMPANY LIMITED BY GUARANTEE TRUSTEES' REPORT (INCLUDING DIRECTORS' REPORT) (CONTINUED) FOR THE YEAR ENDED 31 MARCH 2025

As part of the Sefton Supported Housing Consortium, we manage 19 units of supported accommodation in the south of the Borough. We support a caseload of 30 people in *floating support* — homes not managed by Venus.

Through the Rough Sleepers Initiative, we support vulnerable clients to be rapidly rehomed. This year, we had 333 referrals to our housing services and successfully rehoused 16 people.

We were recommissioned by Sefton Council to support six Afghan families to settle into new homes in Sefton. Our support includes identifying suitable properties, dressing the homes, and connecting families with essential services such as GP registration and school places.

Emergency Support

Our crisis interventions have helped families remain resilient through the ongoing cost-of-living crisis, which continues to exacerbate social, housing, and emotional vulnerabilities.

Crisis interventions this year have been supported through individual donations, the Community Impact Fund, Warm Hubs, Sefton Council for Voluntary Service, and Living Well Sefton.

Open Access continues to be extremely busy, and we've welcomed our two Community Health and Wellbeing Apprentices who give frontline support. We've provided over 700 Open Access appointments. Any member of the community can approach us for support between 10 a.m. and 3 p.m., Monday to Thursday.

This year, we've seen a rise in requests for support associated with the housing crisis. We've helped over 100 people access Property Pool Plus, the housing portal for social landlords in Merseyside.

Our busiest Open Access session is our Friday morning session for refugees and asylum seekers. Despite limited funding, we ensure this session runs weekly, as it supports some of the most vulnerable members of our community. In this financial year, we provided 577 individual advice sessions.

Our popular *Bacon Butty Club* provides a warm breakfast and an even warmer welcome for isolated men navigating homelessness or recovery. We are grateful to the Albert Gubay Trust for supporting this work, which involved 123 attendances. Much more than a hearty breakfast, we hold information sessions, health checks, and help the men get online to bid for properties and manage their benefits.

The scale of our emergency support is demonstrated below:

- 1,820 food parcels distributed to households facing food insecurity
- 219 foodbank vouchers issued for emergency food access
- 352 open-access financial wellbeing sessions
- 120 school uniforms provided
- 98 Christmas food parcels
- 188 Christmas toy hampers
- 59 utility vouchers
- 305 food vouchers

VENUS WORKING CREATIVELY WITH YOUNG WOMEN
COMPANY LIMITED BY GUARANTEE
TRUSTEES' REPORT (INCLUDING DIRECTORS' REPORT) (CONTINUED)
FOR THE YEAR ENDED 31 MARCH 2025

Groups and Activities

Across the week, we invite the community to take part in wellbeing activities designed to bring people together, have fun, and reduce social isolation.

Each Tuesday, we host the women's coffee morning, attended by up to 20 local women each week. We encourage the group to suggest activities such as meditation, cooking together, outings to local venues, and sharing skills and knowledge.

Each Wednesday, we host a peer support group for our *Step Together* mums — a self-led support network. Thursdays feature our ever-popular *Makers Group*, attended regularly by up to 10 women and led by our wonderful volunteer, Jane.

Fridays are very busy at the centre, with our men's *Bacon Butty Club* and the *International Coffee Morning*. We also host a weekly *Family Drop-In* at the Marie Clarke Centre, offering fun and activities for parents with children under five.

Our family programme this year included a wild summer day out at the Crocky Trail, fun at Gulliver's World, and our amazing Christmas party — complete with Santa and a grotto.

Financial review

Despite the state of flux in the charity sector, we've had another successful financial year, achieving a balanced budget and strengthening our reserves. We were thankful to the Integrated Care Board (NHS) for their continued uplift and Winter Surge Funds, which brought stability to the offer at the Star Centre.

We were also grateful to the Steve Morgan Foundation for their core funding of £50,000, which helped cover salary costs for the core team.

We continued with our pathway for IAPT trainees, increasing the offer and helping us retain trainees to develop new strands of work and income streams. We've also continued to bolster our programme through restricted funds from Trusts and Foundations. All of this funding assists us in responding to the needs of the community.

As at 31 March 2025, the charity had reserves of £641,658 (2024: £593,673). Included within these reserves are £57,144 (2024: £94,066) of restricted funds (see note 18) and £221,729 (2024: £231,148) of designated funds (see note 19). Included in unrestricted funds are fixed assets totalling £57,407 (2024: £75,374). These funds can only be realised upon sale of these assets. The charity had free reserves of £366,244 as at 31 March 2025 (2024: £268,459).

Venus Reserves Policy

Our reserves policy is reviewed annually by our Trustees, who agree on the level of reserves Venus needs to accrue in the coming year. Trustees also agree the levels of designated funds (reserves accrued for specific reasons, such as redundancies or special projects) and unrestricted reserves (funds Trustees can allocate within our charitable aims and objectives).

Our current reserves policy is set at three to six months' running costs. This includes funds held in a designated cessation fund, which covers the costs of redundancy should we need to, or decide to, cease trading. Redundancy is calculated at the statutory minimum.

**VENUS WORKING CREATIVELY WITH YOUNG WOMEN
COMPANY LIMITED BY GUARANTEE
TRUSTEES' REPORT (INCLUDING DIRECTORS' REPORT) (CONTINUED)
FOR THE YEAR ENDED 31 MARCH 2025**

Risk Management

The trustees have a risk management strategy that comprises:

- An annual review of the principal risks and uncertainties that the charity faces;
- The establishment of policies, systems and procedures to mitigate those risks identified in the annual review; and
- The implementation of procedures designed to minimise or manage any potential impact on the charity should those risks materialise.

This work has identified that financial sustainability is the major financial risk for the charity. A key element in the management of financial risk is a regular review of available liquid funds to settle debts as they fall due, regular liaison with the bank and active management of debtors and creditors balances to ensure sufficient working capital by the charity.

Attention has also been focused on non-financial risk arising from fire, health and safety of service users, staff and volunteers and each specific project and area of work. These risks are managed through regular assessment, with actions taken promptly to reduce any issues or 'near misses', having robust policies and procedures in place, and regular awareness training for staff working in operational areas. We work with Ellis Whittam, whom we have contracted to support us with Human Resources and Health and Safety functions.

Structure, governance and management

The charity is a company limited by guarantee, incorporated on 12 December 1995 and registered as a charity on 17 April 1996. The charity was established under a Memorandum of Association which established the objects and powers of the company and is governed under its Articles of Association. The term "the company" includes reference to the registered charity, where appropriate.

The trustees, who are also the directors for the purpose of company law, and who served during the year and up to the date of signature of the financial statements were:

Emma Bush (Chair)

Pat Reynolds (Vice Chair)

Olubunmi Adefajo (Treasurer)

Helen Marshall (Safeguarding)

Emily Clark

Helen Condran

Barbara Dutton

Clíodhna Judge

(Resigned 5 September 2024)

Jacqueline Marsh

Appointment of Trustees

As set out in the Articles of Association, the Trustees are elected by members of the charitable company attending the Annual General Meeting.

Organisation

The board of trustees administers the charity. The board normally meet every six weeks. When necessary and appropriate, the charity convenes sub-committees or task and finish groups to cover issues such as development, membership, finance and audit.

The Chief Executive is appointed by trustees to manage the day to day operations of the charity. To facilitate effective operations, the Chief Executive has delegated authority, within the terms of delegation approved by the trustees, for operational matters including finance, employment and service delivery activity.

**VENUS WORKING CREATIVELY WITH YOUNG WOMEN
COMPANY LIMITED BY GUARANTEE
TRUSTEES' REPORT (INCLUDING DIRECTORS' REPORT) (CONTINUED)
FOR THE YEAR ENDED 31 MARCH 2025**

Trustee induction and training

New trustees undergo an induction to brief them on:

- Their legal obligations under charity and company law
- The Charity Commission guidance on public benefit
- The content of the Memorandum and Articles of Association
- The committee and decision making process
- The business plan and recent financial performance of the charity

During the induction process, they meet key employees and other trustees. Trustees are encouraged to attend appropriate external training events where these will facilitate the undertaking of their role.

Pay policy for senior staff

The trustees consider that the board of trustees and the senior management team comprise the key management personnel of the charity, in charge of directing and controlling, running and operating the charity on a day to day basis. All trustees give their time freely and no trustee received remuneration in the year. Details of trustees expenses and related party transactions are disclosed in the accounts.

The pay of the senior staff is reviewed annually and normally increased in accordance with at least inflation. In view of the nature of the charity, the trustees benchmark against pay levels in other organisations of a similar size run on a voluntary basis. The remuneration benchmark is the mid-point of the range paid for similar roles adjusted for a weighting of up to 30% for any additional responsibilities.

Auditor

In accordance with the company's articles, a resolution proposing that Mitchell Charlesworth (Audit) Limited be reappointed as auditor of the company will be put at a General Meeting.


Disclosure of information to auditor

Each of the trustees has confirmed that there is no information of which they are aware which is relevant to the audit, but of which the auditor is unaware. They have further confirmed that they have taken appropriate steps to identify such relevant information and to establish that the auditor is aware of such information.

Small company provisions

This report has been prepared in accordance with the special provisions relating to small companies within Part 15 of the Companies Act 2006.

The trustees' report was approved by the Board of Trustees.



.....
Emma Bush (Chair)

Trustee

16/12/2025

Date:

**VENUS WORKING CREATIVELY WITH YOUNG WOMEN
COMPANY LIMITED BY GUARANTEE
STATEMENT OF TRUSTEES' RESPONSIBILITIES
*FOR THE YEAR ENDED 31 MARCH 2025***

The trustees, who are also the directors of Venus Working Creatively with Young Women for the purpose of company law, are responsible for preparing the Trustees' Report and the financial statements in accordance with applicable law and United Kingdom Accounting Standards (United Kingdom Generally Accepted Accounting Practice).

Company law requires the trustees to prepare financial statements for each financial year which give a true and fair view of the state of affairs of the charity and of the incoming resources and application of resources, including the income and expenditure, of the charitable company for that year.

In preparing these financial statements, the trustees are required to:

- select suitable accounting policies and then apply them consistently;
- observe the methods and principles in the Charities SORP;
- make judgements and estimates that are reasonable and prudent;
- state whether applicable UK Accounting Standards have been followed, subject to any material departures disclosed and explained in the financial statements; and
- prepare the financial statements on the going concern basis unless it is inappropriate to presume that the charity will continue in operation.

The trustees are responsible for keeping adequate accounting records that disclose with reasonable accuracy at any time the financial position of the charity and enable them to ensure that the financial statements comply with the Companies Act 2006. They are also responsible for safeguarding the assets of the charity and hence for taking reasonable steps for the prevention and detection of fraud and other irregularities.

VENUS WORKING CREATIVELY WITH YOUNG WOMEN COMPANY LIMITED BY GUARANTEE INDEPENDENT AUDITOR'S REPORT

TO THE MEMBERS OF VENUS WORKING CREATIVELY WITH YOUNG WOMEN

Opinion

We have audited the financial statements of Venus Working Creatively with Young Women (the 'charity') for the year ended 31 March 2025 which comprise the statement of financial activities, the balance sheet, the statement of cash flows and notes to the financial statements, including significant accounting policies. The financial reporting framework that has been applied in their preparation is applicable law and United Kingdom Accounting Standards, including Financial Reporting Standard 102 *The Financial Reporting Standard applicable in the UK and Republic of Ireland* (United Kingdom Generally Accepted Accounting Practice).

In our opinion, the financial statements:

- give a true and fair view of the state of the charitable company's affairs as at 31 March 2025 and of its incoming resources and application of resources, including its income and expenditure, for the year then ended;
- have been properly prepared in accordance with United Kingdom Generally Accepted Accounting Practice; and
- have been prepared in accordance with the requirements of the Companies Act 2006.

Basis for opinion

We conducted our audit in accordance with International Standards on Auditing (UK) (ISAs (UK)) and applicable law. Our responsibilities under those standards are further described in the *Auditor's responsibilities for the audit of the financial statements* section of our report. We are independent of the charity in accordance with the ethical requirements that are relevant to our audit of the financial statements in the UK, including the FRC's Ethical Standard, and we have fulfilled our other ethical responsibilities in accordance with these requirements. We believe that the audit evidence we have obtained is sufficient and appropriate to provide a basis for our opinion.

Conclusions relating to going concern

In auditing the financial statements, we have concluded that the trustees' use of the going concern basis of accounting in the preparation of the financial statements is appropriate.

Based on the work we have performed, we have not identified any material uncertainties relating to events or conditions that, individually or collectively, may cast significant doubt on the charity's ability to continue as a going concern for a period of at least twelve months from when the financial statements are authorised for issue.

Our responsibilities and the responsibilities of the trustees with respect to going concern are described in the relevant sections of this report.

Other information

The other information comprises the information included in the annual report other than the financial statements and our auditor's report thereon. The trustees are responsible for the other information contained within the annual report. Our opinion on the financial statements does not cover the other information and, except to the extent otherwise explicitly stated in our report, we do not express any form of assurance conclusion thereon. Our responsibility is to read the other information and, in doing so, consider whether the other information is materially inconsistent with the financial statements or our knowledge obtained in the course of the audit, or otherwise appears to be materially misstated. If we identify such material inconsistencies or apparent material misstatements, we are required to determine whether this gives rise to a material misstatement in the financial statements themselves. If, based on the work we have performed, we conclude that there is a material misstatement of this other information, we are required to report that fact.

We have nothing to report in this regard.

Opinions on other matters prescribed by the Companies Act 2006

In our opinion, based on the work undertaken in the course of our audit:

- the information given in the trustees' report for the financial year for which the financial statements are prepared, which includes the directors' report prepared for the purposes of company law, is consistent with the financial statements; and
- the directors' report included within the trustees' report has been prepared in accordance with applicable legal requirements.

VENUS WORKING CREATIVELY WITH YOUNG WOMEN COMPANY LIMITED BY GUARANTEE INDEPENDENT AUDITOR'S REPORT (CONTINUED)

TO THE MEMBERS OF VENUS WORKING CREATIVELY WITH YOUNG WOMEN

Matters on which we are required to report by exception

In the light of the knowledge and understanding of the charity and its environment obtained in the course of the audit, we have not identified material misstatements in the directors' report included within the trustees' report.

We have nothing to report in respect of the following matters in relation to which the Companies Act 2006 requires us to report to you if, in our opinion:

- adequate accounting records have not been kept, or returns adequate for our audit have not been received from branches not visited by us; or
- the financial statements are not in agreement with the accounting records and returns; or
- certain disclosures of trustees' remuneration specified by law are not made; or
- we have not received all the information and explanations we require for our audit; or
- the trustees were not entitled to prepare the financial statements in accordance with the small companies regime and take advantage of the small companies' exemptions in preparing the trustees' report and from the requirement to prepare a strategic report.

Responsibilities of trustees

As explained more fully in the statement of trustees' responsibilities, the trustees, who are also the directors of the charity for the purpose of company law, are responsible for the preparation of the financial statements and for being satisfied that they give a true and fair view, and for such internal control as the trustees determine is necessary to enable the preparation of financial statements that are free from material misstatement, whether due to fraud or error. In preparing the financial statements, the trustees are responsible for assessing the charity's ability to continue as a going concern, disclosing, as applicable, matters related to going concern and using the going concern basis of accounting unless the trustees either intend to liquidate the charitable company or to cease operations, or have no realistic alternative but to do so.

Auditor's responsibilities for the audit of the financial statements

Our objectives are to obtain reasonable assurance about whether the financial statements as a whole are free from material misstatement, whether due to fraud or error, and to issue an auditor's report that includes our opinion. Reasonable assurance is a high level of assurance but is not a guarantee that an audit conducted in accordance with ISAs (UK) will always detect a material misstatement when it exists. Misstatements can arise from fraud or error and are considered material if, individually or in the aggregate, they could reasonably be expected to influence the economic decisions of users taken on the basis of these financial statements.

Irregularities, including fraud, are instances of non-compliance with laws and regulations. We design procedures in line with our responsibilities, outlined above, to detect material misstatements in respect of irregularities, including fraud. The extent to which our procedures are capable of detecting irregularities, including fraud, is detailed below.

Extent to which the audit was considered capable of detecting irregularities, including fraud

Our approach to identifying and assessing the risks of material misstatement in respect of irregularities, including fraud and non-compliance with laws and regulations, was as follows:

- the engagement partner ensured that the engagement team collectively had the appropriate competence, capabilities and skills to identify or recognise non-compliance with applicable laws and regulations;
- we identified the laws and regulations applicable to the company through discussions with directors and other management;
- we focused on specific laws and regulations which we considered may have a direct material effect on the financial statements or the operations of the company, including the Companies Act 2006, taxation legislation and data protection, anti-bribery, employment and health and safety legislation;
- we assessed the extent of compliance with the laws and regulations identified above through making enquiries of management and inspecting legal correspondence; and
- identified laws and regulations were communicated within the audit team regularly and the team remained alert to instances of non-compliance throughout the audit.

VENUS WORKING CREATIVELY WITH YOUNG WOMEN COMPANY LIMITED BY GUARANTEE INDEPENDENT AUDITOR'S REPORT (CONTINUED)

TO THE MEMBERS OF VENUS WORKING CREATIVELY WITH YOUNG WOMEN

We assessed the susceptibility of the company's financial statements to material misstatement, including obtaining an understanding of how fraud might occur, by:

- making enquiries of management as to where they considered there was susceptibility to fraud, their knowledge of actual, suspected and alleged fraud; and
- considering the internal controls in place to mitigate risks of fraud and non-compliance with laws and regulations.

To address the risk of fraud through management bias and override of controls, we:

- performed analytical procedures to identify any unusual or unexpected relationships;
- tested journal entries to identify unusual transactions;
- assessed whether judgements and assumptions made in determining the accounting estimates were indicative of potential bias; and
- investigated the rationale behind significant or unusual transactions.

In response to the risk of irregularities and non-compliance with laws and regulations, we designed procedures which included, but were not limited to:

- agreeing financial statement disclosures to underlying supporting documentation;
- reading the minutes of meetings of those charged with governance; and
- enquiring of management as to actual and potential litigation and claims.

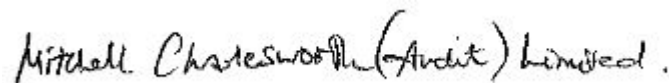
There are inherent limitations in our audit procedures described above. The more removed that laws and regulations are from financial transactions, the less likely it is that we would become aware of non-compliance. Auditing standards also limit the audit procedures required to identify non-compliance with laws and regulations to enquiry of the directors and other management and the inspection of regulatory and legal correspondence, if any.

Material misstatements that arise due to fraud can be harder to detect than those that arise from error as they may involve deliberate concealment or collusion.

A further description of our responsibilities is available on the Financial Reporting Council's website at: <https://www.frc.org.uk/auditorsresponsibilities>. This description forms part of our auditor's report.

Use of our report

This report is made solely to the charitable company's members, as a body, in accordance with Chapter 3 of Part 16 of the Companies Act 2006. Our audit work has been undertaken so that we might state to the charitable company's members those matters we are required to state to them in an auditor's report and for no other purpose. To the fullest extent permitted by law, we do not accept or assume responsibility to anyone other than the charitable company and the charitable company's members as a body, for our audit work, for this report, or for the opinions we have formed.



Anita Mason BA (Hons) BFP FCA (Senior Statutory Auditor)

For and on behalf of Mitchell Charlesworth (Audit) Limited, Statutory Auditor
Accountants

Suites C,D,E, & F
14th Floor The Plaza
100 Old Hall Street
Liverpool
L3 9QJ

Date:19 December 2025

**VENUS WORKING CREATIVELY WITH YOUNG WOMEN
COMPANY LIMITED BY GUARANTEE
STATEMENT OF FINANCIAL ACTIVITIES
INCLUDING INCOME AND EXPENDITURE ACCOUNT**

FOR THE YEAR ENDED 31 MARCH 2025

Current financial year		Unrestricted funds 2025 £	Restricted funds 2025 £	Total 2025 £	Total 2024 £
	Notes				
Income and endowments from:					
Donations and legacies	3	8,798	-	8,798	13,919
Charitable activities	4	1,338,197	286,188	1,624,385	1,581,262
Investments	5	4,773	-	4,773	3,815
Other income	6	26,382	-	26,382	26,638
Total income		1,378,150	286,188	1,664,338	1,625,634
Expenditure on:					
Charitable activities	7	1,337,627	278,726	1,616,353	1,511,073
Total expenditure		1,337,627	278,726	1,616,353	1,511,073
Net income/(expenditure) before transfers		40,523	7,462	47,985	114,561
Transfers between funds	18	44,384	(44,384)	-	-
Net income/(expenditure) for the year / Net movement in funds		84,907	(36,922)	47,985	114,561
Reconciliation of funds:					
Fund balances at 1 April 2024		499,607	94,066	593,673	479,112
Fund balances at 31 March 2025		584,514	57,144	641,658	593,673

The statement of financial activities includes all gains and losses recognised in the year. All income and expenditure derive from continuing activities.

The statement of financial activities also complies with the requirements for an income and expenditure account under the Companies Act 2006.

**VENUS WORKING CREATIVELY WITH YOUNG WOMEN
COMPANY LIMITED BY GUARANTEE
STATEMENT OF FINANCIAL ACTIVITIES (CONTINUED)
INCLUDING INCOME AND EXPENDITURE ACCOUNT**

FOR THE YEAR ENDED 31 MARCH 2025

Prior financial year		Unrestricted funds 2024 £	Restricted funds 2024 £	Total 2024 £
	Notes			
Income and endowments from:				
Donations and legacies	3	13,919	-	13,919
Charitable activities	4	1,222,926	358,336	1,581,262
Investments	5	3,815	-	3,815
Other income	6	26,638	-	26,638
Total income		1,267,298	358,336	1,625,634
Expenditure on:				
Charitable activities	7	1,132,653	378,420	1,511,073
Total expenditure		1,132,653	378,420	1,511,073
Net income/(expenditure) before transfers		134,645	(20,084)	114,561
Transfers between funds	18	20,800	(20,800)	-
Net income/(expenditure) for the year / Net movement in funds		155,445	(40,884)	114,561
Reconciliation of funds:				
Fund balances at 1 April 2023		344,162	134,950	479,112
Fund balances at 31 March 2024		499,607	94,066	593,673

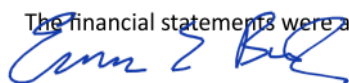
**VENUS WORKING CREATIVELY WITH YOUNG WOMEN
COMPANY LIMITED BY GUARANTEE
BALANCE SHEET**

AS AT 31 MARCH 2025

		2025		2024	
	Notes	£	£	£	£
Fixed assets					
Intangible assets	11		46,933		62,577
Tangible assets	12		10,474		12,797
			<u>57,407</u>		<u>75,374</u>
Current assets					
Debtors	14	269,675		174,036	
Cash at bank and in hand		451,474		403,013	
		<u>721,149</u>		<u>577,049</u>	
Creditors: amounts falling due within one year	15	(136,898)		(58,750)	
		<u></u>		<u></u>	
Net current assets			584,251		518,299
			<u></u>		<u></u>
Total assets less current liabilities			641,658		593,673
			<u></u>		<u></u>
The funds of the charity					
Restricted income funds	18		57,144		94,066
Unrestricted funds - general	19		366,244		268,459
Unrestricted funds - designated funds	19		218,270		231,148
			<u>641,658</u>		<u>593,673</u>
			<u></u>		<u></u>

These financial statements have been prepared in accordance with the provisions applicable to companies subject to the small companies regime.

The financial statements were approved by the trustees on 16/12/2025



.....
Emma Bush (Chair)
Trustee

Company registration number 03136727 (England and Wales)

**VENUS WORKING CREATIVELY WITH YOUNG WOMEN
COMPANY LIMITED BY GUARANTEE
STATEMENT OF CASH FLOWS
FOR THE YEAR ENDED 31 MARCH 2025**

	Notes	2025 £	£	2024 £	£
Cash flows from operating activities					
Cash generated from operations	25		48,295		153,696
Investing activities					
Purchase of tangible fixed assets		(4,607)		(7,429)	
Investment income received		4,773		3,815	
Net cash generated from/(used in) investing activities			166		(3,614)
Net cash generated from financing activities			-		-
Net increase in cash and cash equivalents			48,461		150,082
Cash and cash equivalents at beginning of year			403,013		252,931
Cash and cash equivalents at end of year			451,474		403,013

**VENUS WORKING CREATIVELY WITH YOUNG WOMEN
COMPANY LIMITED BY GUARANTEE
NOTES TO THE FINANCIAL STATEMENTS
FOR THE YEAR ENDED 31 MARCH 2025**

1 Accounting policies

Charity information

Venus Working Creatively with Young Women is a private company limited by guarantee incorporated in England and Wales. The registered office is The Venus Centre, 215 Linacre Lane, Bootle, L20 6AD.

1.1 Accounting convention

The financial statements have been prepared in accordance with the charity's governing document, the Companies Act 2006, FRS 102 "The Financial Reporting Standard applicable in the UK and Republic of Ireland" ("FRS 102") and the Charities SORP "Accounting and Reporting by Charities: Statement of Recommended Practice applicable to charities preparing their accounts in accordance with the Financial Reporting Standard applicable in the UK and Republic of Ireland (FRS 102)" (effective 1 January 2019). The charity is a Public Benefit Entity as defined by FRS 102.

The financial statements are prepared in sterling, which is the functional currency of the charity. Monetary amounts in these financial statements are rounded to the nearest £.

The financial statements have been prepared under the historical cost convention. The principal accounting policies adopted are set out below.

1.2 Going concern

At the time of approving the financial statements, the trustees have a reasonable expectation that the charity has adequate resources to continue in operational existence for the foreseeable future. Thus the trustees continue to adopt the going concern basis of accounting in preparing the financial statements.

1.3 Charitable funds

All income and expenditure together with gains and losses are allocated to a specific charitable fund.

Unrestricted funds are available to spend on activities that further any of the purposes of the charity.

Designated funds are unrestricted funds of the charity which the trustees have decided at their discretion to set aside to use for a specific purpose. Further details of designated funds, together with their purpose, are set out in note 19.

Restricted funds are donations which the donor has specified are to be used solely for particular areas of the charity's work or for specific projects being undertaken by the charity. Further details of restricted funds, together with their purpose, are set out in note 18.

1.4 Income

Income is recognised when the charity has entitlement to the funds, any performance conditions attached to the item(s) of income have been met, it is probable that the income will be received and the amount can be measured reliably.

Income from government and other grants, whether 'capital' grants or 'revenue' grants, is recognised when the charity has entitlement to the funds, any performance conditions attached to the item(s) of income have been met, it is probable that the income will be received and the amount can be measured reliably and is not deferred.

Interest on funds held on deposit is included when receivable and the amount can be measured reliably by the charity; this is normally upon notification of the interest paid or payable by the bank.

**VENUS WORKING CREATIVELY WITH YOUNG WOMEN
COMPANY LIMITED BY GUARANTEE
NOTES TO THE FINANCIAL STATEMENTS (CONTINUED)
FOR THE YEAR ENDED 31 MARCH 2025**

1 Accounting policies

(Continued)

1.5 Expenditure

Expenditure is recognised once there is a legal or constructive obligation to transfer economic benefit to a third party, it is probable that a transfer of economic benefits will be required in settlement, and the amount of the obligation can be measured reliably. Expenditure is classified under the following activity headings:

Family Support
Housing Support
Hub Services
Mental Health and Youth Justice
Core

Irrecoverable VAT is charged as a cost against the activity for which the expenditure was incurred.

1.6 Intangible fixed assets other than goodwill

Intangible assets acquired separately from a business are recognised at cost and are subsequently measured at cost less accumulated amortisation and accumulated impairment losses.

Amortisation is recognised so as to write off the cost or valuation of assets less their residual values over their useful lives on the following bases:

Website and CRM	Straight line basis over 5 years
-----------------	----------------------------------

1.7 Tangible fixed assets

Tangible assets are stated at cost less accumulated depreciation and accumulated impairment losses. The cost includes the original purchase price, costs directly attributable to bringing the asset into its working condition for its intended use, dismantling and restoration costs and borrowing costs capitalised.

Plant and machinery and fixtures, fittings, tools and equipment are stated at cost less accumulated depreciation and accumulated impairment losses.

Depreciation is provided at the following annual rates in order to write each asset off over its anticipated useful economic life. A full year's depreciation charge is charged in the year of acquisition and no depreciation is charged in the year of disposal.

Short Leasehold land and buildings	Straight line basis over 5 years
Fixtures and equipment	Straight line basis over 4 years
Motor vehicles	Straight line basis over 4 years

Subsequent costs are included in the assets carrying amount or recognised as a separate asset, as appropriate, only when it is probable that economic benefits associated with the item will flow to the charitable company and the cost can be measured reliably.

Repairs, maintenance and minor inspection costs are expenses as incurred.

The gain or loss arising on the disposal of an asset is determined as the difference between the sale proceeds and the carrying value of the asset, and is recognised in the statement of financial activities.

**VENUS WORKING CREATIVELY WITH YOUNG WOMEN
COMPANY LIMITED BY GUARANTEE
NOTES TO THE FINANCIAL STATEMENTS (CONTINUED)
FOR THE YEAR ENDED 31 MARCH 2025**

1 Accounting policies (Continued)

1.8 Impairment of fixed assets

At each reporting end date, the charity reviews the carrying amounts of its tangible and intangible assets to determine whether there is any indication that those assets have suffered an impairment loss. If any such indication exists, the recoverable amount of the asset is estimated in order to determine the extent of the impairment loss (if any).

1.9 Cash and cash equivalents

Cash and cash equivalents include cash in hand, deposits held at call with banks, other short-term liquid investments with original maturities of three months or less, and bank overdrafts. Bank overdrafts are shown within borrowings in current liabilities.

1.10 Financial instruments

The charity has elected to apply the provisions of Section 11 'Basic Financial Instruments' and Section 12 'Other Financial Instruments Issues' of FRS 102 to all of its financial instruments.

Financial instruments are recognised in the charity's balance sheet when the charity becomes party to the contractual provisions of the instrument.

Financial assets and liabilities are offset, with the net amounts presented in the financial statements, when there is a legally enforceable right to set off the recognised amounts and there is an intention to settle on a net basis or to realise the asset and settle the liability simultaneously.

Basic financial assets

Basic financial assets, which include debtors and cash and bank balances, are initially measured at transaction price including transaction costs and are subsequently carried at amortised cost using the effective interest method unless the arrangement constitutes a financing transaction, where the transaction is measured at the present value of the future receipts discounted at a market rate of interest. Financial assets classified as receivable within one year are not amortised.

Basic financial liabilities

Basic financial liabilities, including creditors and bank loans are initially recognised at transaction price unless the arrangement constitutes a financing transaction, where the debt instrument is measured at the present value of the future payments discounted at a market rate of interest. Financial liabilities classified as payable within one year are not amortised.

Debt instruments are subsequently carried at amortised cost, using the effective interest rate method.

Trade creditors are obligations to pay for goods or services that have been acquired in the ordinary course of operations from suppliers. Amounts payable are classified as current liabilities if payment is due within one year or less. If not, they are presented as non-current liabilities. Trade creditors are recognised initially at transaction price and subsequently measured at amortised cost using the effective interest method.

Derecognition of financial liabilities

Financial liabilities are derecognised when the charity's contractual obligations expire or are discharged or cancelled.

1.11 Taxation

The charity is exempt from tax on income and gains falling within section 505 of the Taxes Act 1988 or section 252 of the Taxation of Chargeable Gains Act 1992 to the extent that these are applied to its charitable objects.

**VENUS WORKING CREATIVELY WITH YOUNG WOMEN
COMPANY LIMITED BY GUARANTEE
NOTES TO THE FINANCIAL STATEMENTS (CONTINUED)
FOR THE YEAR ENDED 31 MARCH 2025**

1 Accounting policies (Continued)

1.12 Employee benefits

The cost of any unused holiday entitlement is recognised in the period in which the employee's services are received.

Termination benefits are recognised immediately as an expense when the charity is demonstrably committed to terminate the employment of an employee or to provide termination benefits.

1.13 Retirement benefits

Payments to defined contribution retirement benefit schemes are charged as an expense as they fall due.

1.14 Leases

Rentals payable under operating leases, including any lease incentives received, are charged as an expense on a straight line basis over the term of the relevant lease.

2 Critical accounting estimates and judgements

In the application of the charity's accounting policies, the trustees are required to make judgements, estimates and assumptions about the carrying amount of assets and liabilities that are not readily apparent from other sources. The estimates and associated assumptions are based on historical experience and other factors that are considered to be relevant. Actual results may differ from these estimates.

The estimates and underlying assumptions are reviewed on an ongoing basis. Revisions to accounting estimates are recognised in the period in which the estimate is revised where the revision affects only that period, or in the period of the revision and future periods where the revision affects both current and future periods.

There were considered to be no critical accounting estimates or judgements applied in the preparation of these financial statements.

3 Income from donations and legacies

	Unrestricted funds 2025 £	Unrestricted funds 2024 £
Donations and gifts	8,798	13,919

**VENUS WORKING CREATIVELY WITH YOUNG WOMEN
COMPANY LIMITED BY GUARANTEE
NOTES TO THE FINANCIAL STATEMENTS (CONTINUED)
FOR THE YEAR ENDED 31 MARCH 2025**

4	Income from charitable activities	Family Support	Housing Support	Hub Mental Health Services	Hub Mental Health and Youth Justice	Core	Total	Total
		2025 £	2025 £	2025 £	2025 £	2025 £	2025 £	2024 £
	Traineeships and Secondments	-	-	-	545,165	4,760	549,925	288,241
	Commissioned Services	95,000	168,199	5,000	318,106	1,045	587,350	664,466
	Performance related grants	75,066	11,456	109,866	52,662	51,717	300,767	447,702
	Housing Benefits	-	186,274	-	-	-	186,274	180,700
	Other income	-	-	-	-	69	69	153
		170,066	365,929	114,866	915,933	57,591	1,624,385	1,581,262
	Analysis by fund							
	Unrestricted funds - general	95,000	280,375	11,000	894,231	57,591	1,338,197	1,222,926
	Restricted funds	75,066	85,554	103,866	21,702	-	286,188	358,336
		170,066	365,929	114,866	915,933	57,591	1,624,385	1,581,262

**VENUS WORKING CREATIVELY WITH YOUNG WOMEN
COMPANY LIMITED BY GUARANTEE
NOTES TO THE FINANCIAL STATEMENTS (CONTINUED)**

FOR THE YEAR ENDED 31 MARCH 2025

Previous year:	Family Support	Housing Support	Hub Mental Health Services	Mental Health and Youth Justice	Core	Total
	2024	2024	2024	2024	2024	2024
	£	£	£	£	£	£
Traineeships and Secondments	-	-	-	279,321	8,920	288,241
Commissioned Services	235,750	107,231	38,270	283,724	(509)	664,466
Performance related grants	135,484	875	172,253	68,649	70,441	447,702
Housing Benefits	-	180,700	-	-	-	180,700
Other income	-	-	-	-	153	153
	<u>371,234</u>	<u>288,806</u>	<u>210,523</u>	<u>631,694</u>	<u>79,005</u>	<u>1,581,262</u>
Analysis by fund						
Unrestricted funds - general	232,000	287,931	47,442	580,048	75,505	1,222,926
Restricted funds	139,234	875	163,081	51,646	3,500	358,336
	<u>371,234</u>	<u>288,806</u>	<u>210,523</u>	<u>631,694</u>	<u>79,005</u>	<u>1,581,262</u>

5 Income from investments

	Unrestricted funds 2025 £	Unrestricted funds 2024 £
Interest receivable	<u>4,773</u>	<u>3,815</u>

6 Other income

	Unrestricted funds 2025 £	Unrestricted funds 2024 £
Insurance claims	<u>26,382</u>	<u>26,638</u>

**VENUS WORKING CREATIVELY WITH YOUNG WOMEN
COMPANY LIMITED BY GUARANTEE**
NOTES TO THE FINANCIAL STATEMENTS (CONTINUED)
FOR THE YEAR ENDED 31 MARCH 2025

7 Expenditure on charitable activities

	Family Support	Housing Support	Hub Services	Mental Health and Youth Justice	Core	Total
	2025 £	2025 £	2025 £	2025 £	2025 £	2025 £
Direct costs						
Staff costs	118,193	158,634	70,631	486,302	371,188	1,204,948
Depreciation and impairment	-	-	-	-	22,574	22,574
Provisions for service users	33,839	-	45,121	-	-	78,960
Overheads	20,255	2,745	10,599	19,245	93,150	145,994
Rent	-	84,212	-	-	-	84,212
Other	-	-	-	-	1,615	1,615
Other staff costs	1,155	-	3,604	3,039	19,110	26,908
	<u>173,442</u>	<u>245,591</u>	<u>129,955</u>	<u>508,586</u>	<u>507,637</u>	<u>1,565,211</u>
Share of support and governance costs (see note 8)						
Governance	3,959	684	6,642	10,642	29,215	51,142
	<u>177,401</u>	<u>246,275</u>	<u>136,597</u>	<u>519,228</u>	<u>536,852</u>	<u>1,616,353</u>
Analysis by fund						
Unrestricted funds - general	110,646	176,261	16,774	497,094	536,852	1,337,627
Restricted funds	66,755	70,014	119,823	22,134	-	278,726
	<u>177,401</u>	<u>246,275</u>	<u>136,597</u>	<u>519,228</u>	<u>536,852</u>	<u>1,616,353</u>

**VENUS WORKING CREATIVELY WITH YOUNG WOMEN
COMPANY LIMITED BY GUARANTEE
NOTES TO THE FINANCIAL STATEMENTS (CONTINUED)
FOR THE YEAR ENDED 31 MARCH 2025**

7 Expenditure on charitable activities (Continued)

Previous year:	Family Support	Housing Support	Hub Services	Mental Health and Youth Justice	Core	Total
	2024	2024	2024	2024	2024	2024
	£	£	£	£	£	£
Direct costs						
Staff costs	210,835	153,026	108,681	438,196	252,744	1,163,482
Depreciation and impairment	-	-	-	-	21,640	21,640
Provisions for service users	11,675	3,232	40,565	2,717	5,378	63,567
Overheads	2,391	7,843	3,781	36,846	67,961	118,822
Rent	-	73,329	-	-	-	73,329
Other	-	-	-	-	2,874	2,874
Other staff costs	4,972	1,448	1,646	5,626	10,459	24,151
Bad debts	-	-	-	-	897	897
	229,873	238,878	154,673	483,385	361,953	1,468,762
Share of support and governance costs (see note 8)						
Governance	3,275	566	5,495	8,804	24,171	42,311
	233,148	239,444	160,168	492,189	386,124	1,511,073
Analysis by fund						
Unrestricted funds - general	110,629	226,350	5,509	419,027	371,138	1,132,653
Restricted funds	122,519	13,094	154,659	73,162	14,986	378,420
	233,148	239,444	160,168	492,189	386,124	1,511,073

8 Support costs allocated to activities

	2025 £	2024 £
Governance costs	51,142	42,311
Analysed between the following charitable activities:		
Family Support	3,959	3,275
Housing Support	684	566
Hub Services	6,642	5,495
Mental Health and Youth Justice	10,642	8,804
Core	29,215	24,171
	51,142	42,311

**VENUS WORKING CREATIVELY WITH YOUNG WOMEN
COMPANY LIMITED BY GUARANTEE
NOTES TO THE FINANCIAL STATEMENTS (CONTINUED)
FOR THE YEAR ENDED 31 MARCH 2025**

8 Support costs allocated to activities (Continued)

	2025	2024
	£	£
Governance costs comprise:		
Audit fees	7,100	6,750
Accountancy	4,306	4,873
Legal and professional	39,558	30,491
Bank charges	178	197
	<u>51,142</u>	<u>42,311</u>

Support and governance costs are apportioned based on the activity that they relate to.

9 Trustees

None of the trustees (or any persons connected with them) received any remuneration or benefits from the charity during the year.

10 Employees

The average monthly number of employees during the year was:

	2025	2024
	Number	Number
Administration and finance	5	11
Management	6	8
Support	35	34
	<u>46</u>	<u>53</u>

	2025	2024
	£	£
Employment costs		
Wages and salaries	1,090,163	1,050,892
Social security costs	84,510	83,232
Other pension costs	30,275	29,358
	<u>1,204,948</u>	<u>1,163,482</u>

Redundancy and termination payments totalling £12,447 were made in the reporting period.

There were no employees whose annual remuneration was more than £60,000.

**VENUS WORKING CREATIVELY WITH YOUNG WOMEN
COMPANY LIMITED BY GUARANTEE
NOTES TO THE FINANCIAL STATEMENTS (CONTINUED)
FOR THE YEAR ENDED 31 MARCH 2025**

10 Employees (Continued)

Remuneration of key management personnel

The remuneration of key management personnel was as follows:

	2025	2024
	£	£
Aggregate compensation	234,265	275,267

The Key Management Personnel in the year to 31 March 2025 are as follows:

Chief Executive Officer:	Susan Potts
Housing and Resettlement Support Lead:	Carlie Machell
Children and Young People Lead:	Jean Hodgkinson
Executive Assistant to CEO:	Louise Boynton
Finance Officer:	Lyn Robinson
Finance Officer:	Seelan Manoharam

11 Intangible fixed assets

	Website and CRM
	£
Cost	
At 1 April 2024 and 31 March 2025	78,221
Amortisation and impairment	
At 1 April 2024	15,644
Amortisation charged for the year	15,644
At 31 March 2025	31,288
Carrying amount	
At 31 March 2025	46,933
At 31 March 2024	62,577

**VENUS WORKING CREATIVELY WITH YOUNG WOMEN
COMPANY LIMITED BY GUARANTEE**
NOTES TO THE FINANCIAL STATEMENTS (CONTINUED)
FOR THE YEAR ENDED 31 MARCH 2025

12 Tangible fixed assets

	Short Leasehold land and buildings	Fixtures and equipment	Motor vehicles	Total
	£	£	£	£
Cost				
At 1 April 2024	60,271	42,726	10,418	113,415
Additions	-	4,607	-	4,607
At 31 March 2025	60,271	47,333	10,418	118,022
Depreciation and impairment				
At 1 April 2024	56,872	33,328	10,418	100,618
Depreciation charged in the year	1,699	5,231	-	6,930
At 31 March 2025	58,571	38,559	10,418	107,548
Carrying amount				
At 31 March 2025	1,700	8,774	-	10,474
At 31 March 2024	3,399	9,398	-	12,797

13 Financial instruments

	2025	2024
	£	£
Carrying amount of financial assets		
Debt instruments measured at amortised cost	710,139	568,924
Carrying amount of financial liabilities		
Measured at amortised cost	135,929	58,377

14 Debtors

	2025	2024
	£	£
Amounts falling due within one year:		
Trade debtors	258,665	164,893
Other debtors	-	1,018
Prepayments and accrued income	11,010	8,125
	269,675	174,036

**VENUS WORKING CREATIVELY WITH YOUNG WOMEN
COMPANY LIMITED BY GUARANTEE
NOTES TO THE FINANCIAL STATEMENTS (CONTINUED)
FOR THE YEAR ENDED 31 MARCH 2025**

15 Creditors: amounts falling due within one year

	Notes	2025 £	2024 £
Deferred income	16	76,653	21,869
Trade creditors		20,707	3,068
Other creditors		969	1,597
Accruals		38,569	32,216
		<u>136,898</u>	<u>58,750</u>

16 Deferred income

	2025 £	2024 £
Other deferred income	76,653	21,869
	<u>76,653</u>	<u>21,869</u>

Deferred income is included in the financial statements as follows:

	2025 £	2024 £
Deferred income is included within:		
Current liabilities	76,653	21,869
	<u>76,653</u>	<u>21,869</u>
Movements in the year:		
Deferred income at 1 April 2024	21,869	22,560
Released from previous periods	(21,869)	(22,560)
Income deferred in the year	76,653	21,869
	<u>76,653</u>	<u>21,869</u>
Deferred income at 31 March 2025	76,653	21,869
	<u>76,653</u>	<u>21,869</u>

17 Retirement benefit schemes

	2025 £	2024 £
Defined contribution schemes		
Charge to profit or loss in respect of defined contribution schemes	30,275	29,358
	<u>30,275</u>	<u>29,358</u>

The charity operates a defined contribution pension scheme for all qualifying employees. The assets of the scheme are held separately from those of the charity in an independently administered fund.

**VENUS WORKING CREATIVELY WITH YOUNG WOMEN
COMPANY LIMITED BY GUARANTEE
NOTES TO THE FINANCIAL STATEMENTS (CONTINUED)**

FOR THE YEAR ENDED 31 MARCH 2025

18 Restricted funds

The restricted funds of the charity comprise the unexpended balances of donations and grants held on trust subject to specific conditions by donors as to how they may be used.

	Movement in funds				Movement in funds				
	Balance at 1 April 2023	Income	Expenditure	Transfers	Balance at 1 April 2024	Income	Expenditure	Transfers	Balance at 31 March 2025
	£	£	£	£	£	£	£	£	£
Smallwood - Possibilities	34,581	36,000	(19,731)	(6,000)	44,850	24,000	(39,958)	-	28,892
Steve Morgan Foundation - IT Infrastructure	11,500	-	(11,486)	-	14	-	-	-	14
IAPT Partnership Training	10,188	-	-	-	10,188	-	-	(10,188)	-
Big Lottery Fund - Step Together	29,520	59,989	(53,788)	(14,800)	20,921	61,663	(48,388)	(34,196)	-
Tudor Trust	-	50,000	(50,000)	-	-	-	-	-	-
The National Lottery Community Fund	-	61,090	(61,090)	-	-	9,653	(7,283)	-	2,370
Police Commissioner	-	19,925	(19,493)	-	432	-	(432)	-	-
Housing Benefit	8,163	-	(8,163)	-	-	79,429	(68,371)	-	11,058
Smallwood - ROSA	-	1,250	(1,250)	-	-	3,750	-	-	3,750
Sefton CVS	-	300	(300)	-	-	6,590	(6,590)	-	-
Sefton Emotional Achievement Service (SEAS)	-	8,050	(8,050)	-	-	7,000	(7,000)	-	-
Eleanor Rathbone Charitable Trust	-	-	-	-	-	4,000	(4,000)	-	-
Halton Activity Fund / Merseyside Holiday Fund	6,959	20,244	(19,730)	-	7,473	-	(1,083)	-	6,390
Halton International Cafe	1,956	-	(1,956)	-	-	-	-	-	-
Supporting Homeless Activities	2,288	-	(2,288)	-	-	-	-	-	-
Arts Council	7,827	-	(7,827)	-	-	-	-	-	-
Winter clothing	20	2,000	(2,020)	-	-	-	-	-	-
D-Fuse Projects / D-Fuse Active	21,948	3,671	(25,619)	-	-	-	-	-	-
Stonehaven	-	17,451	(17,451)	-	-	-	-	-	-
Sports England	-	-	-	-	-	3,300	(3,300)	-	-
Europe SE Cultural Foundation	-	-	-	-	-	7,030	(7,030)	-	-
P H Holt	-	10,000	-	-	10,000	-	(10,000)	-	-
Merseyside Recycling and Waste Authority	-	3,500	(3,500)	-	-	-	-	-	-

**VENUS WORKING CREATIVELY WITH YOUNG WOMEN
COMPANY LIMITED BY GUARANTEE
NOTES TO THE FINANCIAL STATEMENTS (CONTINUED)**

FOR THE YEAR ENDED 31 MARCH 2025

18	Restricted funds	(Continued)							
	LCR Multiply	-	17,007	(17,007)	-	-	15,147	(15,147)	-
	United Utilities	-	40,000	(40,000)	-	-	20,000	(20,000)	-
	Community Foundation	-	6,984	(6,984)	-	-	12,850	(12,850)	-
	Albert Gubay	-	875	(687)	-	188	6,126	(1,644)	4,670
	LCVS Community Impact Fund	-	-	-	-	-	2,954	(2,954)	-
	Neighbourly	-	-	-	-	-	1,280	(1,280)	-
	Merseyside Women's Fund	-	-	-	-	-	6,994	(6,994)	-
	Liverpool One	-	-	-	-	-	14,422	(14,422)	-
		<u>134,950</u>	<u>358,336</u>	<u>(378,420)</u>	<u>(20,800)</u>	<u>94,066</u>	<u>286,188</u>	<u>(278,726)</u>	<u>57,144</u>

Smallwood - Possibilities: As a Smallwood Community Grant Partner we are able to distribute grants to women in need to provide, amongst other things, debt relief, pathways back to employment or household essentials. This is the final year of a 4 year programme, due to end in December 2025.

The Steve Morgan Foundation - IT Infrastructure: funding received to help us undertake a web and systems rebuild.

IAPT Partnership Training: funding for training available specifically for our Child and young people counsellors in the Star Centre.

Big Lottery: This was the final portion of our 5 year Step Together project, supporting women who had children inside the care system. The project ended in September 2021 and was refunded for continuation in April 2022 for 3 years.

Tudor Trust supported both our family support programme and increased activity in the Star Centre.

The National Lottery Community Fund, second year of a three year continuation grant for Step Together which supports women who have had children removed from their care. The project ended in April 2025. They also supported increased activity in response to the Cost Of Living Crisis. This support enabled us to provide extra Open Access Sessions, more emergency food parcels, winter clothing, Data, and energy vouchers.

Police Commissioner: This is the continuation of our Stonehaven project. In conjunction with Merseyside Police, we have set up a team of Youth Workers and Therapists who work with young people to reduce the risk of involvement in county lines activity. The programme has been extended for a further year and us due to finish in March 2023 although we expect a fourth year of the programme.

Housing benefit: Housing benefit is received via Sefton MBC to support the rent costs of our 20 supported living properties which are part of our work with Sefton Supported Housing Consortium. This is restricted funding and can only be spent on rents to our landlords.

Smallwood - Rosa: We received £5k to run workshops with the Step Together group, telling their stories through animation.

**VENUS WORKING CREATIVELY WITH YOUNG WOMEN
COMPANY LIMITED BY GUARANTEE
NOTES TO THE FINANCIAL STATEMENTS (CONTINUED)
FOR THE YEAR ENDED 31 MARCH 2025**

18 Restricted funds	(Continued)
Sefton CVS – Funding for Winter & Summer Clothing, also running welcome spaces providing food, washing facilities & internet access to combat social isolation.	
Sefton Emotional Achievement Service (SEAS) is a group of charities who support bespoke emotional wellbeing support for children and young people. Funding from SEAS supported therapeutic interventions in schools.	
Eleanor Rathbone Charitable Trust - Open access programme provide support to women in Bootle.	
Halton Activity Fund / Merseyside Holiday Fund: We received funding from Halton Council's Holiday Activity Fund (HAF) to take families on a two-night break to Youth Hostel Association. All funds related to days out and activities. Our Halton programme finished in 2023-24.	
Halton International Café is a drop in service for refugee and asylum seekers needing help and support in resettlement. It offered a safe place to meet with others facing similar barriers.	
Supporting Homeless Activities: with support of the Community Impact Fund we were able to trial a new service for our homeless clients, the Bacon Butty Club. This is a moving on activity supporting peer friendships, using kitchen appliances like air fryers, slow cookers and the washing machine.	
Arts Council England funded 3 artists to help us plan for a new home for Venus.	
Winter clothing funding from SCVs: This Fund was to purchase Vouchers for service Users & their families for winter clothing or coats.	
D-Fuse projects: Digital – working within a school setting with children/Teenagers who are struggling with mental health or at risk of being involved in criminal activities. Teaching them digital skills, such as photography, filming making & animation. The aim of the project was for them to tell their story through digital media.	
Stonehaven: funded through the Police Commissioner Service – this is extension of the support provide through our Youth Justice programme and provides Information Advice and Guidance to young people at risk or involved in crime, alongside outreach therapy.	
Sports England Movement fund – Funding for a Women's walking group supporting walking for health and social connections.	
Europe SE Cultural Foundation - Providing Money & debt Advice at Bootle library	
P H Holt Foundation supported our Family Triage Worker to provide crisis intervention.	
Merseyside Recycling and Waste Authority supported series of workshops for women in the community who were interested in reuse, mending and creating their own clothes. The sessions were delivered by artist Emma Summerscales during our second pop up money management shop and within the Venus Centre.	
LCR Multiply is a math's intervention delivered by the Workers Educational Association, supported by ESF funding. The aim of the funding is to increase math's skills using a variety of techniques. Venus is delivering budgeting and money management workshops along with one to one sessions with this funding.	
United Utilities Trust Fund supports our money management worker to give advice and guidance concerning affordable utilities, dealing with arrears and making applications to trust funds. This is the second year of funding which ended in October 2024.	

**VENUS WORKING CREATIVELY WITH YOUNG WOMEN
COMPANY LIMITED BY GUARANTEE
NOTES TO THE FINANCIAL STATEMENTS (CONTINUED)
FOR THE YEAR ENDED 31 MARCH 2025**

18	Restricted funds	(Continued)
	Community Foundation: Donated via the Community Foundation, The Financial Planning Association supported the second iteration of our Pop Up Money Management Shop.	
	Albert Gubay Foundation has provided a two year grant to support our Bacon Butty Club, a peer group for men who have experienced homelessness.	
	LCVS community impact fund- Open access funding, providing daily advice drop-in for Service users.	
	Neighbourly – We received 1k for towards the travel costs for days out with families. We received £280 for LDA resources for Star Centre therapy rooms, along with £230 towards the Christmas party.	
	Merseyside Women's Fund - Women's Befriending Service for women waiting for therapeutic services.	
	Liverpool One – Mental health support for children & Families, incredible years parenting support & play therapy.	

**VENUS WORKING CREATIVELY WITH YOUNG WOMEN
COMPANY LIMITED BY GUARANTEE
NOTES TO THE FINANCIAL STATEMENTS (CONTINUED)**

FOR THE YEAR ENDED 31 MARCH 2025

19 Unrestricted funds

The unrestricted funds of the charity comprise the unexpended balances of donations and grants which are not subject to specific conditions by donors and grantors as to how they may be used. These include designated funds which have been set aside out of unrestricted funds by the trustees for specific purposes.

	At 1 April 2024	Income	Expenditure	Transfers	At 31 March 2025
	£	£	£	£	£
Fixed Asset Fund	75,374	-	-	(17,967)	57,407
Cessation Contingency Fund	155,774	-	-	5,089	160,863
General funds	268,459	1,378,150	(1,337,627)	57,262	366,244
	<u>499,607</u>	<u>1,378,150</u>	<u>(1,337,627)</u>	<u>44,384</u>	<u>584,514</u>
	<u><u>499,607</u></u>	<u><u>1,378,150</u></u>	<u><u>(1,337,627)</u></u>	<u><u>44,384</u></u>	<u><u>584,514</u></u>
Previous year:	At 1 April 2023	Income	Expenditure	Transfers	At 31 March 2024
	£	£	£	£	£
Fixed Asset Fund	89,586	-	-	(14,212)	75,374
Cessation Contingency Fund	124,863	-	-	30,911	155,774
General funds	129,713	1,267,298	(1,132,653)	4,101	268,459
	<u>344,162</u>	<u>1,267,298</u>	<u>(1,132,653)</u>	<u>20,800</u>	<u>499,607</u>
	<u><u>344,162</u></u>	<u><u>1,267,298</u></u>	<u><u>(1,132,653)</u></u>	<u><u>20,800</u></u>	<u><u>499,607</u></u>

The Fixed Asset Fund represents the ring fencing of assets which are not available as port of the general liquid reserves of the charity.

The Cessation Contingency Fund is designed to provide for costs likely to be incurred should the charity cease to operate.

**VENUS WORKING CREATIVELY WITH YOUNG WOMEN
COMPANY LIMITED BY GUARANTEE
NOTES TO THE FINANCIAL STATEMENTS (CONTINUED)
FOR THE YEAR ENDED 31 MARCH 2025**

20 Analysis of net assets between funds

	Unrestricted funds	Designated funds	Restricted funds	Total	Unrestricted funds	Designated funds	Restricted funds	Total
	2025	2025	2025	2025	2024	2024	2024	2024
	£	£	£	£	£	£	£	£
Fund balances at 31 March 2025 are represented by:								
Intangible fixed assets	-	46,933	-	46,933	-	62,577	-	62,577
Tangible assets	-	10,474	-	10,474	-	12,797	-	12,797
Current assets/(liabilities)	366,244	160,863	57,144	584,251	268,459	155,774	94,066	518,299
	<u>366,244</u>	<u>160,863</u>	<u>57,144</u>	<u>584,251</u>	<u>268,459</u>	<u>155,774</u>	<u>94,066</u>	<u>518,299</u>
	<u><u>366,244</u></u>	<u><u>218,270</u></u>	<u><u>57,144</u></u>	<u><u>641,658</u></u>	<u><u>268,459</u></u>	<u><u>231,148</u></u>	<u><u>94,066</u></u>	<u><u>593,673</u></u>

**VENUS WORKING CREATIVELY WITH YOUNG WOMEN
COMPANY LIMITED BY GUARANTEE
NOTES TO THE FINANCIAL STATEMENTS (CONTINUED)
FOR THE YEAR ENDED 31 MARCH 2025**

21 Operating lease commitments

Lessee

At the reporting end date the charity had outstanding commitments for future minimum lease payments under non-cancellable operating leases, which fall due as follows:

	2025	2024
	£	£
Within one year	7,680	5,227
Between two and five years	23,040	4,224
	<u>30,720</u>	<u>9,451</u>

22 Related party transactions

There were no disclosable related party transactions during the year (2024 - none).

23 Company Limited By Guarantee

Venus Working Creatively with Young Women is incorporated under the Companies Act as a company limited by guarantee. The liability of the members is limited to £10.

24 Analysis of changes in net funds

The charity had no material debt during the year.

25 Cash generated from operations	2025	2024
	£	£
Surplus for the year	47,985	114,561
Adjustments for:		
Investment income recognised in statement of financial activities	(4,773)	(3,815)
Depreciation and impairment of tangible fixed assets	22,573	21,640
Movements in working capital:		
(Increase)/decrease in debtors	(95,639)	35,621
Increase/(decrease) in creditors	23,365	(13,620)
Increase/(decrease) in deferred income	54,784	(691)
Cash generated from operations	<u>48,295</u>	<u>153,696</u>