

Charity registration number 1054622

Company registration number 03136727 (England and Wales)

VENUS WORKING CREATIVELY WITH YOUNG WOMEN
COMPANY LIMITED BY GUARANTEE
ANNUAL REPORT AND FINANCIAL STATEMENTS
FOR THE YEAR ENDED 31 MARCH 2024

VENUS WORKING CREATIVELY WITH YOUNG WOMEN COMPANY LIMITED BY GUARANTEE LEGAL AND ADMINISTRATIVE INFORMATION

Trustees

Emma Bush (Chair)
Pat Reynolds (Vice Chair)
Olubunmi Adefajo (Treasurer)
Helen Marshall (Safeguarding)
Emily Clark
Helen Condran
Barbara Dutton
Jacqueline Marsh

Secretary & Chief Executive Officer

Susan Potts

Charity number

1054622

Company number

03136727

Registered office

The Venus Centre
215 Linacre Lane
Bootle
L20 6AD

Auditor

Mitchell Charlesworth (Audit) Limited
Suite 5.1
Tempest
12 Tithebarn Street
Liverpool
L2 2DT

Bankers

HSBC Bank PLC
99-101 Lord Street
Liverpool
L2 6PG

VENUS WORKING CREATIVELY WITH YOUNG WOMEN COMPANY LIMITED BY GUARANTEE CONTENTS

	Page
Trustees' report	1 - 10
Statement of trustees' responsibilities	11
Independent auditor's report	12 - 14
Statement of financial activities	15 - 16
Balance sheet	17
Statement of cash flows	18
Notes to the financial statements	19 - 38

VENUS WORKING CREATIVELY WITH YOUNG WOMEN COMPANY LIMITED BY GUARANTEE TRUSTEES' REPORT (INCLUDING DIRECTORS' REPORT) FOR THE YEAR ENDED 31 MARCH 2024

The trustees present their annual report and financial statements for the year ended 31 March 2024.

The financial statements have been prepared in accordance with the accounting policies set out in note 1 to the financial statements and comply with the charity's governing document, the Companies Act 2006 and "Accounting and Reporting by Charities: Statement of Recommended Practice applicable to charities preparing their accounts in accordance with the Financial Reporting Standard applicable in the UK and Republic of Ireland (FRS 102)" (effective 1 January 2019).

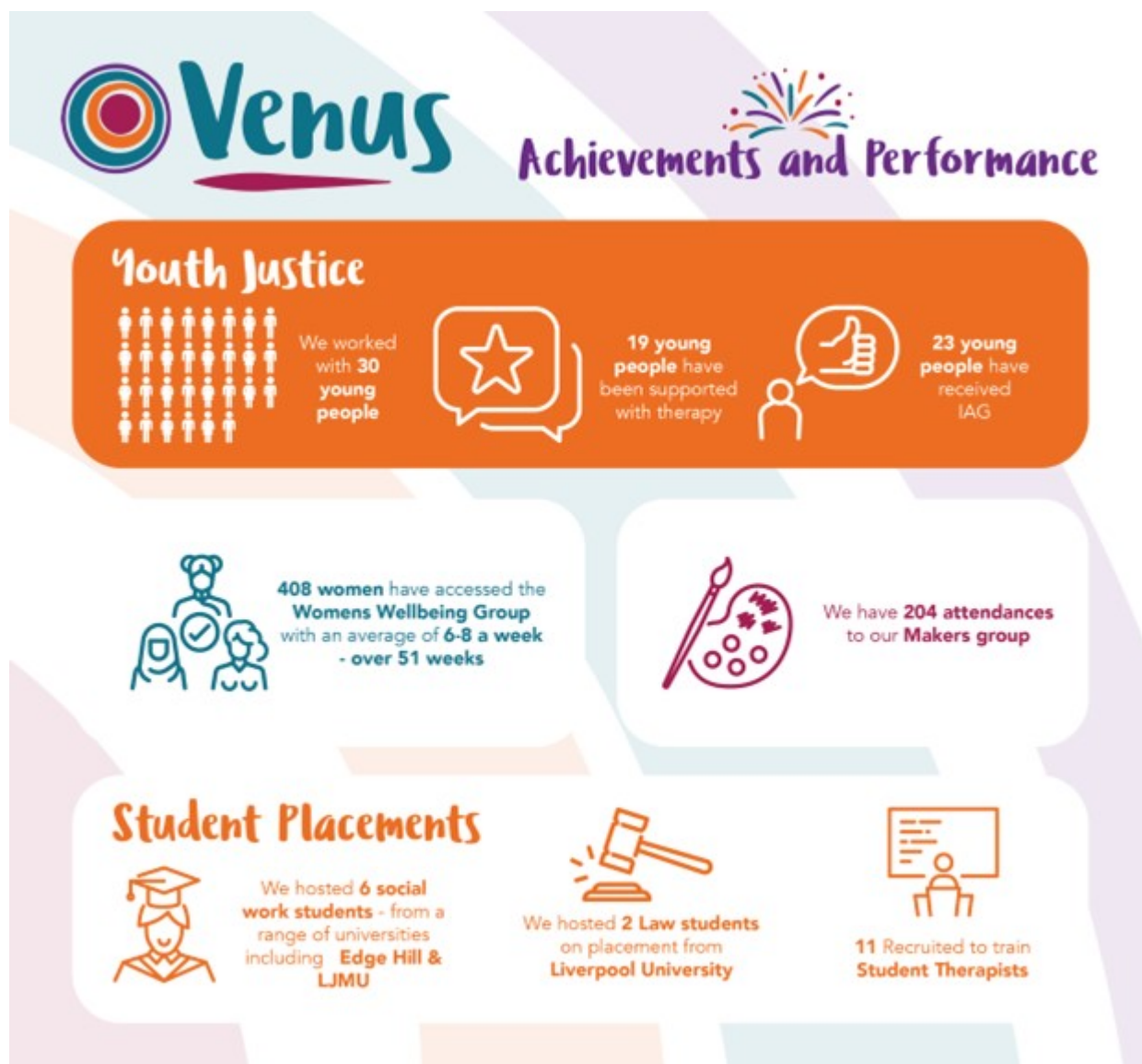
Our Year at a Glance



**VENUS WORKING CREATIVELY WITH YOUNG WOMEN
COMPANY LIMITED BY GUARANTEE
TRUSTEES' REPORT (INCLUDING DIRECTORS' REPORT) (CONTINUED)
FOR THE YEAR ENDED 31 MARCH 2024**



**VENUS WORKING CREATIVELY WITH YOUNG WOMEN
COMPANY LIMITED BY GUARANTEE
TRUSTEES' REPORT (INCLUDING DIRECTORS' REPORT) (CONTINUED)
FOR THE YEAR ENDED 31 MARCH 2024**



Charitable Objectives

As stated in our Memorandum and Articles of Association, "Venus aims to promote such charitable purposes as the Trustees shall, in their absolute discretion, think fit, including in particular but not so as to limit the generality of the foregoing".

- The advancement of education and the preservation and protection of health of those young women residing in the area of Sefton, particularly, but not exclusively, in matters relating to sexual health,
- The provision of facilities in the interests of social welfare for recreation and leisure time occupation with the object of improving the condition of life for the said women.

However, to reflect the changing nature of our work, we are awaiting a decision from The Charity Commission to change our Articles of Association to:

- The advancement of equality, opportunity and education and the preservation, protection and improvement of mental and physical health and wellbeing of those residing in the United Kingdom.
- The provision of facilities in the interests of social welfare with the object of improving and advocating for the conditions of life, housing and economic security, independence and enjoyment for the said people and communities.
- The supply of non-judgemental services that are unreservedly and universally accessible, dedicated, safe, inclusive and respectful to all.

VENUS WORKING CREATIVELY WITH YOUNG WOMEN COMPANY LIMITED BY GUARANTEE TRUSTEES' REPORT (INCLUDING DIRECTORS' REPORT) (CONTINUED) FOR THE YEAR ENDED 31 MARCH 2024

The Venus Vision is to support the communities we serve to have fulfilling lives and to be resilient. Our vision is fulfilled through our Mission Statement: To work with women, children, young people and families in our community, recognising their choices, voices and opportunities to develop their potential.

We are a value led organisation and our work is delivered through our Value Framework:

- **Accessible** – An open-door policy
- **Respect** – Consideration and respect for the people we support and for each other
- **Integrity** – Our community is at the heart of what we do, and we work to our values at all times
- **Trust** – We respect confidentiality, and the trust people place in us
- **Fairness** – A fair deal for everyone

Venus works across the Borough of Sefton and until April 2024 had a satellite hub in Halton Brook Family Centre, Runcorn. Our programmes are co-designed with our service users, ensuring our work is meeting their needs. In the Financial Year 1 April 2023 to 31 March 2024, our programmes included:

- Family services through Early Help, structured support programmes and triage
- Mental health services for children and young people
- Open Access Advice and Support
- Accommodation and tenancy support to homeless individuals
- Money management and financial literacy
- Emergency food and provisions such as warm clothing
- Resettlement support to asylum seekers and refugees
- Weekly support groups
- Counselling for women
- Services for women with multiple complexities
- Volunteering opportunities

Delivering our aims, objectives, and legal purposes

The Venus Trustees support the delivery of our charitable aims and objectives through ongoing checks and balances and scrutiny of management information, progress reports and financial statements. We hold bi-monthly board meetings and have a number of board sub-groups including a regular finance subgroup meeting. The depth and breadth for our services are demonstrated in easy-to-understand infographics in Section 1.

The trustees have paid due regard to guidance issued by the Charity Commission in deciding what activities the charity should undertake.

Overview of Charitable Activity in Financial Year 2023 – 2024

Venus had a successful year during which we fulfilled all outputs and outcomes for the services we deliver as commissions on behalf of Public Sector organisations and for projects supported by trusts, foundations and donations.

Of particular note this year is the support we received from The National Lottery Community Fund via The Cost-of-Living Fund. We were successful in a grant application which enabled us to provide additional Open Access Advice and Money Management sessions, distribute extra emergency food parcels, winter clothing, mobile phone data packs and energy/utility vouchers. The fund also helped us cover our increased core costs and overheads.

With support from the Merseyside Violence Reduction Partnership, we trialled two behaviour modification projects aimed at supporting young people who struggle to regulate their emotions. The interventions assisted anger management by providing therapeutic support alongside methods of positively channelling energies and emotions. Dfuse Active was delivered to two cohorts in a secondary school. The therapeutic element of the programme was delivered by Star Centre therapists, and we engaged a sports instructor to support the young people to use sports as means to regulate emotions. Dfuse Digital followed the same process but engaged young people whose passions were focussed on creativity. We engaged a film maker/ animator to explore the use of creative technology as a means of expression and modulating mood.

VENUS WORKING CREATIVELY WITH YOUNG WOMEN COMPANY LIMITED BY GUARANTEE TRUSTEES' REPORT (INCLUDING DIRECTORS' REPORT) (CONTINUED) FOR THE YEAR ENDED 31 MARCH 2024

During June/July 2023, we delivered our 2nd pop-up Money Management Shop in Bootle Strand Shopping Centre. The project was sponsored by The Financial Planning Corporation. Over a 6-week period, 325 people were supported with debt advice, budgeting and completing financial statements, benefit checks, energy efficiency saving tips, and assistance to apply to the 'Household Support Fund'. A wraparound wellbeing programme was delivered in partnership with local organisations. Events at the shop were covered by BBC Northwest and BBC Politics North.

With support from the Workers Educational Association and the European Skills Fund, we developed a Maths Skills training programme using household budgeting and debt management as the hook to engagement. 157 people undertook this programme which assisted them to improve their management and understanding of household finances.

We brought additionality to our regular International Coffee Morning through the LCR Cares Digital fund, which supported the development of digital skills for asylum seekers and refugees.

We dealt with a difficult time from January 2024 to March 2024 after Halton Council gave us 12 weeks' notice of the discontinuation of our family support programme in Runcorn. This resulted in 2 staff redundancies and unfortunately the closure of our centre in Halton Brook. Alongside the Supporting Families commission, we delivered a Family Hubs programme, an International Coffee Morning, summer activities and an annual family residential. All of this programme was lost to the community when the underpinning Supporting Families Grant was removed.

The rise in children and young people experiencing mental health problems peaked in January 2022 causing an unprecedented waiting list at the Star Centre. Numbers reached way beyond our capacity, resulting in young people waiting up to 4 months for an assessment and 9 months for therapy. The manner in which referrals came to us from the Child and Adolescent Mental Health Service (CAMHS) had to be changed and in February 2023 we took the difficult but necessary decision to close referrals for 3 months. This hiatus assisted us to address our waiting list and to work with our commissioners and CAMHS to devise a system which ensured children and young people are seen within a Four Week Wait (NHS Guidelines). We agreed a monthly cap on referrals resulting in referrals being assessed within 4 weeks. Our waiting list is now stable and within our capacity.

Accommodation and space continue to be a challenge for our organisation. Our Resource Centre is very small, it does not accommodate our full staff complement, the layout of the building is wasteful and it hinders our ability to provide activities. Across 2023/2024 we conducted an exercise which explored empty or vacant spaces in Bootle, including looking at converting a former public house. However, we found options extremely limited. In November 2023 we met with Sefton Council's planning department to discuss extending Venus Centre across wasted space within in our current footprint. We hope to take this plan forward in 2024/2025.

Achievements and Performance

We achieve our aims, objectives and legal purposes by delivering services through 4 pillars of work:

- Housing and Resettlement
- Family Support
- Mental Health and Wellbeing
- Hub Services

Housing and Resettlement:

Venus is a member of The Sefton Supported Housing Group (SSHG) who deliver significant elements of the Homelessness Strategy for Sefton by providing 140 units of supported accommodation. Venus manages 20 units which are safe spaces for rehabilitation from an episode of homelessness. Our service provides emotional and practical support, delivered through psychologically informed environments which ensure that mental health and wellbeing is at the forefront of our work.

We complete face-to-face assessments for Mainstay services (Sefton Council's Homelessness Process) enabling homeless people to be assessed in their community. In the last year we completed 40 assessments of potential rough sleeping in the Bootle area.

In 2022 Venus was contracted to provide a caseload of 30 Floating Support tenancies. We are now in our second successful year of this service and have supported 65 people to have successful tenancies after periods of homelessness.

VENUS WORKING CREATIVELY WITH YOUNG WOMEN COMPANY LIMITED BY GUARANTEE TRUSTEES' REPORT (INCLUDING DIRECTORS' REPORT) (CONTINUED) FOR THE YEAR ENDED 31 MARCH 2024

Venus is contracted by Sefton Council to provide 16 placements through a Rapid Rehousing Pathway (RRP). RRP is funded by the central government's Rough Sleeper Initiative (RSI) to break down barriers to rehousing to the most complex cases through supported accommodation. RRP work ensures that clients have the correct property pool banding and access to support workers.

'Bacon Butty club' has been continued from our pilot programme with the support of the Albert Gubay Foundation. 30 men from the local homeless community are accessing this service ensuring they have a welcoming warm space, peer support, along with cooking skills, digital skills and job search opportunities.

International Coffee Morning is a drop-in advice service for refugee and asylum seekers. Across this year we had 250 attendances at this session. We augmented the service with support from LCR Cares.

Family Support:

Parent to Parent Volunteer Support Project, Halton

Our work in Halton included: Supporting Families, an early help programme for families referred to social care; Intensive Cleaning Education, in home support for families struggling to maintain good home conditions; women's counselling; drop-in support groups; and support to refugees and asylum seekers through a drop-in service. Unfortunately, Halton Council decided not to outsource their Supporting Families programme from April 2024 resulting in the closure of our centre.

Step Together, Sefton

Step Together is an innovative programme for women whose children have been taken into care of the Local Authority. Originally funded via the Women and Girls Fund, National Lottery Community Fund, a scaled down programme through the Reaching Communities Fund was agreed for 3 years in 2022. We are in the second year of this grant and received 77 referrals for support with 40 women taking up the offer. 16 of these women gained increased contact with their children and 7 women had children returned to their care. In early 2024, we received support from the Rosa Fund to develop an education pack aimed at foster parents, maternity staff and social workers who actions and sensibilities can have a positive or negative impact on the experience of women in the process of losing their children. We will take this work forward in 2024/2025.

Strengthening Families Initiative, Sefton

This is a commissioned service we deliver on behalf of Sefton Council as part of their Early Help for Families programme. Our work involves developing a whole family support plan matched to the individual needs of each family member. In this financial year 67 families were referred to this service of which 32 families completed support plans.

Family Navigation Service

Family Navigation Service (formerly Triage) is a quick turnaround service, supporting families to avert crisis. We work with families on a 6-week programme of support, tackling their most acute problems. 125 families were referred to this service this year.

Hub Services:

Open Access

Our Open Access Service is a daily drop-in service for the local community. Community members can call in for a chat with a support worker who will address their immediate concerns. Open Access deals with a wide range of issues including housing advice and guidance, debt, mental health issues, food poverty and the provision of advocacy. This year we supported 816 people through this service, almost doubling the service from 2022/23.

Youth Justice Programme

For a number of years, we have delivered a programme of support to young people most likely to be involved/are involved in crime. We employed 2 Information, Advice and Guidance workers and 2 dedicated therapists. This programme is funded by the NHS and through Operation Stonehaven, an initiative to prevent County Lines involvement. Through these programmes we supported 30 young people. Also, this year we received funding from Merseyside Violence Reduction Partnership and Streetgames to develop two pilot programmes Dfuse Active and Dfuse Digital. Both programmes support emotional regulation in a group setting by offering young people therapeutic toolkits alongside activities which help to manage negative emotions. Our Youth Justice programme came to an end in March 2023.

VENUS WORKING CREATIVELY WITH YOUNG WOMEN COMPANY LIMITED BY GUARANTEE TRUSTEES' REPORT (INCLUDING DIRECTORS' REPORT) (CONTINUED) FOR THE YEAR ENDED 31 MARCH 2024

Mental Health and Wellbeing:

Women's Counselling

Venus hosted 18 trainee counsellors who attend local colleges and are in their final months of practice to qualify as therapists. We host a range of modalities such as integrative, person centred, and psychodynamic. This year 186 women were supported in Bootle and 30 women were supported in Halton.

The Star Centre

The Star Centre is our Mental Health service for children and young people (CYP). We deliver an NHS commissioned service, supporting over 600 young people yearly. We are part of the Sefton Increased Access to Talking Therapies Partnership. Through this partnership we have student placements funded by the NHS Recruit to Train scheme. This scheme is for qualified staff to retrain in additional modalities and is designed to increase the range of services available to children and young people in Sefton. In January 2023 we recruited 11 students to support Parenting, Systemic Family Practice, Learning Disability, Cognitive Behaviour Therapy, Interpersonal Psychotherapy and Children and Young People Wellbeing Practice.

Access Figures

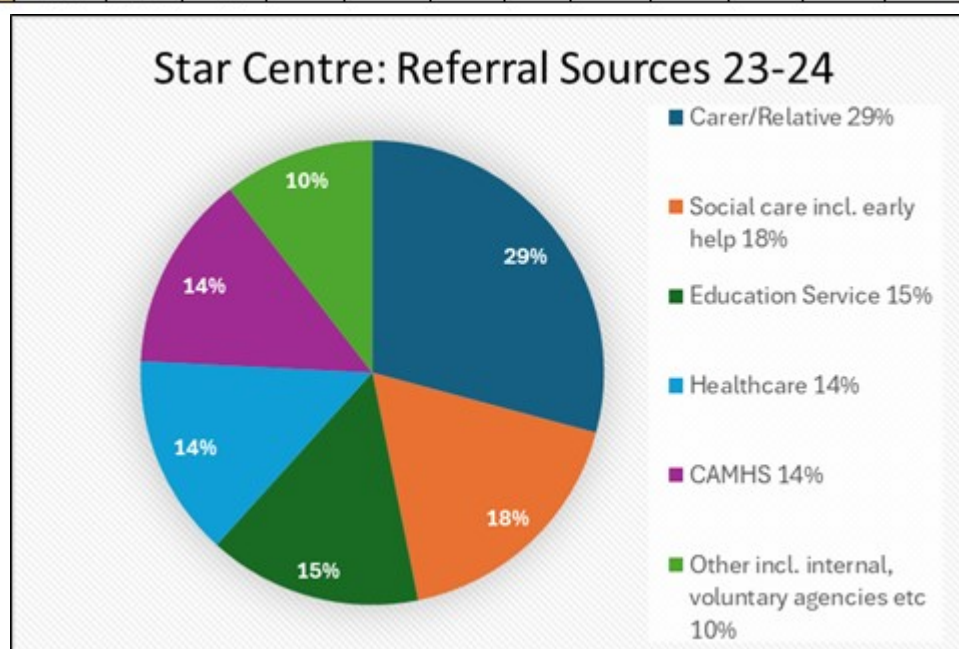
This year there were **3,175** attended sessions. This figure includes arranged appointments, groups and open access/crisis drop in. 680 young people engaged with the service over the year. 466 young people had two or more meaningful contacts. This could be attending the open access drop-in, having an initial assessment appointment, receiving a check-in call or actually receiving therapeutic sessions. **249** children, young people or their families completed therapeutic intervention, attending all 8 sessions.

Referrals

The Star Centre re-opened to new referrals during May 2023 following a decision to pause the referrals due to unprecedented demand since January 2022. This pause allowed us to catch up with our waiting list and to make plans for re-opening with a cap on referrals.

Overall, the Star Centre received **533** referrals April 23 – March 24. Of these, **17%** were assessed with increased risk levels and offered an expedited appointment within 4 weeks.

Year	Jan	Feb	Mar	Apr	May	Jun	Jul	Aug	Sep	Oct	Nov	Dec	Total
2022	95	78	91	76	98	69	89	60	69	84	99	65	973
2023	28	-	-	-	15	42	48	45	33	50	100	29	390
2024	39	63	41										143



VENUS WORKING CREATIVELY WITH YOUNG WOMEN COMPANY LIMITED BY GUARANTEE TRUSTEES' REPORT (INCLUDING DIRECTORS' REPORT) (CONTINUED) FOR THE YEAR ENDED 31 MARCH 2024

Waiting Lists

At the end of March 2024:

- 48 CYP waiting for an assessment appointment
- 144 CYP waiting for intervention

Financial review

We've had a successful year, achieving a balanced budget and the fortification of our reserves. We successfully negotiated an uplift to our contract with the Integrated Care Board (NHS) which brought stability to the offer at Star Centre. We were thankful to the Tudor Trust who allowed us to divert £50,000 of capital investment to our support programmes. And, to the National Lottery Community Fund for supporting us to broaden our services to vulnerable clients whilst assisting with increased overheads. We had the largest intake of studentships for Star Centre in January 2024 which has made a significant impact on our turnover this financial year and for the first 3 financial quarters of 2024/2025.

We've continued to bolster our programme through restricted funds from Trusts and Foundations. All of this funding assists us to respond to the needs of the community. This year almost one third of our turnover came from restricted grants.

As at 31 March 2024, the charity had reserves of £593,673 (2023: £479,112). Included within these reserves are £94,066 (2023: £134,950) of restricted funds (see note 19) and £231,148 (2023: £214,449) of designated funds (see note 20). Included in unrestricted funds are fixed assets totalling £75,374 (2023: £89,586). These funds can only be realised upon sale of these assets. The charity had free reserves of £268,459 as at 31 March 2024 (2023: £129,713).

Venus Reserves Policy

Our reserves policy is reviewed on an annual basis by our Trustees who agree the level of reserves Venus needs to accrue in the coming year. Trustees also agree the levels of designated funds (reserves we accrue for specific reasons, such as redundancies or special projects) and our unrestricted reserves (funds trustees can allocate within our charitable aims and objectives). Our current reserves policy is set at 3 to 6 months running costs. This includes funds held in a designated cessation fund which covers the costs of redundancy should we need to or decide to cease trading. Redundancy is set at the statutory minimum. This level of reserves has been maintained throughout the year.

Risk Management

The trustees have a risk management strategy that comprises:

- An annual review of the principal risks and uncertainties that the charity faces;
- The establishment of policies, systems and procedures to mitigate those risks identified in the annual review; and
- The implementation of procedures designed to minimise or manage any potential impact on the charity should those risks materialise.

This work has identified that financial sustainability is the major financial risk for the charity. A key element in the management of financial risk is a regular review of available liquid funds to settle debts as they fall due, regular liaison with the bank and active management of debtors and creditors balances to ensure sufficient working capital by the charity.

Attention has also been focused on non-financial risk arising from fire, health and safety of service users, staff and volunteers and each specific project and area of work. These risks are managed through regular assessment, with actions taken promptly to reduce any issues or 'near misses', having robust policies and procedures in place, and regular awareness training for staff working in operational areas. We work with Ellis Whittam, whom we have contracted to support us with Human Resources and Health and Safety functions.

VENUS WORKING CREATIVELY WITH YOUNG WOMEN COMPANY LIMITED BY GUARANTEE TRUSTEES' REPORT (INCLUDING DIRECTORS' REPORT) (CONTINUED) FOR THE YEAR ENDED 31 MARCH 2024

Structure, governance and management

The charity is a company limited by guarantee, incorporated on 12 December 1995 and registered as a charity on 17 April 1996. The charity was established under a Memorandum of Association which established the objects and powers of the company and is governed under its Articles of Association. The term "the company" includes reference to the registered charity, where appropriate.

The trustees, who are also the directors for the purpose of company law, and who served during the year and up to the date of signature of the financial statements were:

Emma Bush (Chair)

Pat Reynolds (Vice Chair)

Olubunmi Adefajo (Treasurer)

Helen Marshall (Safeguarding)

Emily Clark

Helen Condran

Barbara Dutton

Clíodhna Judge

(Resigned 5 September 2024)

Jacqueline Marsh

Appointment of Trustees

As set out in the Articles of Association, the Trustees are elected by members of the charitable company attending the Annual General Meeting.

Organisation

The board of trustees administers the charity. The board normally meet every six weeks. When necessary and appropriate, the charity convenes sub-committees or task and finish groups to cover issues such as development, membership, finance and audit.

The Chief Executive is appointed by trustees to manage the day to day operations of the charity. To facilitate effective operations, the Chief Executive has delegated authority, within the terms of delegation approved by the trustees, for operational matters including finance, employment and service delivery activity.

Trustee induction and training

New trustees undergo an induction to brief them on:

- Their legal obligations under charity and company law
- The Charity Commission guidance on public benefit
- The content of the Memorandum and Articles of Association
- The committee and decision making process
- The business plan and recent financial performance of the charity

During the induction process, they meet key employees and other trustees. Trustees are encouraged to attend appropriate external training events where these will facilitate the undertaking of their role.

Pay policy for senior staff

The trustees consider that the board of trustees and the senior management team comprise the key management personnel of the charity, in charge of directing and controlling, running and operating the charity on a day to day basis. All trustees give their time freely and no trustee received remuneration in the year. Details of trustees expenses and related party transactions are disclosed in the accounts.

The pay of the senior staff is reviewed annually and normally increased in accordance with at least inflation. In view of the nature of the charity, the trustees benchmark against pay levels in other organisations of a similar size run on a voluntary basis. The remuneration benchmark is the mid-point of the range paid for similar roles adjusted for a weighting of up to 30% for any additional responsibilities.

**VENUS WORKING CREATIVELY WITH YOUNG WOMEN
COMPANY LIMITED BY GUARANTEE
TRUSTEES' REPORT (INCLUDING DIRECTORS' REPORT) (CONTINUED)
FOR THE YEAR ENDED 31 MARCH 2024**

Auditor

In accordance with the company's articles, a resolution proposing that Mitchell Charlesworth (Audit) Limited be reappointed as auditor of the company will be put at a General Meeting.

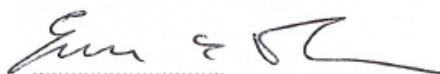
Disclosure of information to auditor

Each of the trustees has confirmed that there is no information of which they are aware which is relevant to the audit, but of which the auditor is unaware. They have further confirmed that they have taken appropriate steps to identify such relevant information and to establish that the auditor is aware of such information.

Small company provisions

This report has been prepared in accordance with the special provisions relating to small companies within Part 15 of the Companies Act 2006.

The trustees' report was approved by the Board of Trustees.



Emma Bush (Chair)

Trustee

Date: 11/12/2024

**VENUS WORKING CREATIVELY WITH YOUNG WOMEN
COMPANY LIMITED BY GUARANTEE
STATEMENT OF TRUSTEES' RESPONSIBILITIES
FOR THE YEAR ENDED 31 MARCH 2024**

The trustees, who are also the directors of Venus Working Creatively with Young Women for the purpose of company law, are responsible for preparing the Trustees' Report and the financial statements in accordance with applicable law and United Kingdom Accounting Standards (United Kingdom Generally Accepted Accounting Practice).

Company Law requires the trustees to prepare financial statements for each financial year which give a true and fair view of the state of affairs of the charity and of the incoming resources and application of resources, including the income and expenditure, of the charitable company for that year.

In preparing these financial statements, the trustees are required to:

- select suitable accounting policies and then apply them consistently;
- observe the methods and principles in the Charities SORP;
- make judgements and estimates that are reasonable and prudent;
- state whether applicable UK Accounting Standards have been followed, subject to any material departures disclosed and explained in the financial statements; and
- prepare the financial statements on the going concern basis unless it is inappropriate to presume that the charity will continue in operation.

The trustees are responsible for keeping adequate accounting records that disclose with reasonable accuracy at any time the financial position of the charity and enable them to ensure that the financial statements comply with the Companies Act 2006. They are also responsible for safeguarding the assets of the charity and hence for taking reasonable steps for the prevention and detection of fraud and other irregularities.

VENUS WORKING CREATIVELY WITH YOUNG WOMEN COMPANY LIMITED BY GUARANTEE INDEPENDENT AUDITOR'S REPORT

TO THE MEMBERS OF VENUS WORKING CREATIVELY WITH YOUNG WOMEN

Opinion

We have audited the financial statements of Venus Working Creatively with Young Women (the 'charity') for the year ended 31 March 2024 which comprise the statement of financial activities, the balance sheet, the statement of cash flows and notes to the financial statements, including significant accounting policies. The financial reporting framework that has been applied in their preparation is applicable law and United Kingdom Accounting Standards, including Financial Reporting Standard 102 *The Financial Reporting Standard applicable in the UK and Republic of Ireland* (United Kingdom Generally Accepted Accounting Practice).

In our opinion, the financial statements:

- give a true and fair view of the state of the charitable company's affairs as at 31 March 2024 and of its incoming resources and application of resources, including its income and expenditure, for the year then ended;
- have been properly prepared in accordance with United Kingdom Generally Accepted Accounting Practice; and
- have been prepared in accordance with the requirements of the Companies Act 2006.

Basis for opinion

We conducted our audit in accordance with International Standards on Auditing (UK) (ISAs (UK)) and applicable law. Our responsibilities under those standards are further described in the *Auditor's responsibilities for the audit of the financial statements* section of our report. We are independent of the charity in accordance with the ethical requirements that are relevant to our audit of the financial statements in the UK, including the FRC's Ethical Standard, and we have fulfilled our other ethical responsibilities in accordance with these requirements. We believe that the audit evidence we have obtained is sufficient and appropriate to provide a basis for our opinion.

Conclusions relating to going concern

In auditing the financial statements, we have concluded that the trustees' use of the going concern basis of accounting in the preparation of the financial statements is appropriate.

Based on the work we have performed, we have not identified any material uncertainties relating to events or conditions that, individually or collectively, may cast significant doubt on the charity's ability to continue as a going concern for a period of at least twelve months from when the financial statements are authorised for issue.

Our responsibilities and the responsibilities of the trustees with respect to going concern are described in the relevant sections of this report.

Other information

The other information comprises the information included in the annual report other than the financial statements and our auditor's report thereon. The trustees are responsible for the other information contained within the annual report. Our opinion on the financial statements does not cover the other information and, except to the extent otherwise explicitly stated in our report, we do not express any form of assurance conclusion thereon. Our responsibility is to read the other information and, in doing so, consider whether the other information is materially inconsistent with the financial statements or our knowledge obtained in the course of the audit, or otherwise appears to be materially misstated. If we identify such material inconsistencies or apparent material misstatements, we are required to determine whether this gives rise to a material misstatement in the financial statements themselves. If, based on the work we have performed, we conclude that there is a material misstatement of this other information, we are required to report that fact.

We have nothing to report in this regard.

Opinions on other matters prescribed by the Companies Act 2006

In our opinion, based on the work undertaken in the course of our audit:

- the information given in the trustees' report for the financial year for which the financial statements are prepared, which includes the directors' report prepared for the purposes of company law, is consistent with the financial statements; and
- the directors' report included within the trustees' report has been prepared in accordance with applicable legal requirements.

VENUS WORKING CREATIVELY WITH YOUNG WOMEN COMPANY LIMITED BY GUARANTEE INDEPENDENT AUDITOR'S REPORT (CONTINUED)

TO THE MEMBERS OF VENUS WORKING CREATIVELY WITH YOUNG WOMEN

Matters on which we are required to report by exception

In the light of the knowledge and understanding of the charity and its environment obtained in the course of the audit, we have not identified material misstatements in the directors' report included within the trustees' report.

We have nothing to report in respect of the following matters in relation to which the Companies Act 2006 requires us to report to you if, in our opinion:

- adequate accounting records have not been kept, or returns adequate for our audit have not been received from branches not visited by us; or
- the financial statements are not in agreement with the accounting records and returns; or
- certain disclosures of trustees' remuneration specified by law are not made; or
- we have not received all the information and explanations we require for our audit; or
- the trustees were not entitled to prepare the financial statements in accordance with the small companies regime and take advantage of the small companies' exemptions in preparing the trustees' report and from the requirement to prepare a strategic report.

Responsibilities of trustees

As explained more fully in the statement of trustees' responsibilities, the trustees, who are also the directors of the charity for the purpose of company law, are responsible for the preparation of the financial statements and for being satisfied that they give a true and fair view, and for such internal control as the trustees determine is necessary to enable the preparation of financial statements that are free from material misstatement, whether due to fraud or error. In preparing the financial statements, the trustees are responsible for assessing the charity's ability to continue as a going concern, disclosing, as applicable, matters related to going concern and using the going concern basis of accounting unless the trustees either intend to liquidate the charitable company or to cease operations, or have no realistic alternative but to do so.

Auditor's responsibilities for the audit of the financial statements

Our objectives are to obtain reasonable assurance about whether the financial statements as a whole are free from material misstatement, whether due to fraud or error, and to issue an auditor's report that includes our opinion. Reasonable assurance is a high level of assurance but is not a guarantee that an audit conducted in accordance with ISAs (UK) will always detect a material misstatement when it exists. Misstatements can arise from fraud or error and are considered material if, individually or in the aggregate, they could reasonably be expected to influence the economic decisions of users taken on the basis of these financial statements.

Irregularities, including fraud, are instances of non-compliance with laws and regulations. We design procedures in line with our responsibilities, outlined above, to detect material misstatements in respect of irregularities, including fraud. The extent to which our procedures are capable of detecting irregularities, including fraud, is detailed below.

Extent to which the audit was considered capable of detecting irregularities, including fraud

Our approach to identifying and assessing the risks of material misstatement in respect of irregularities, including fraud and non-compliance with laws and regulations, was as follows:

- the engagement partner ensured that the engagement team collectively had the appropriate competence, capabilities and skills to identify or recognise non-compliance with applicable laws and regulations;
- we identified the laws and regulations applicable to the company through discussions with directors and other management;
- we focused on specific laws and regulations which we considered may have a direct material effect on the financial statements or the operations of the company, including the Companies Act 2006, taxation legislation and data protection, anti-bribery, employment and health and safety legislation;
- we assessed the extent of compliance with the laws and regulations identified above through making enquiries of management and inspecting legal correspondence; and
- identified laws and regulations were communicated within the audit team regularly and the team remained alert to instances of non-compliance throughout the audit.

**VENUS WORKING CREATIVELY WITH YOUNG WOMEN
COMPANY LIMITED BY GUARANTEE
INDEPENDENT AUDITOR'S REPORT (CONTINUED)
TO THE MEMBERS OF VENUS WORKING CREATIVELY WITH YOUNG WOMEN**

We assessed the susceptibility of the company's financial statements to material misstatement, including obtaining an understanding of how fraud might occur, by:

- making enquiries of management as to where they considered there was susceptibility to fraud, their knowledge of actual, suspected and alleged fraud; and
- considering the internal controls in place to mitigate risks of fraud and non-compliance with laws and regulations.

To address the risk of fraud through management bias and override of controls, we:

- performed analytical procedures to identify any unusual or unexpected relationships;
- tested journal entries to identify unusual transactions;
- assessed whether judgements and assumptions made in determining the accounting estimates were indicative of potential bias; and
- investigated the rationale behind significant or unusual transactions.

In response to the risk of irregularities and non-compliance with laws and regulations, we designed procedures which included, but were not limited to:

- agreeing financial statement disclosures to underlying supporting documentation;
- reading the minutes of meetings of those charged with governance; and
- enquiring of management as to actual and potential litigation and claims.

There are inherent limitations in our audit procedures described above. The more removed that laws and regulations are from financial transactions, the less likely it is that we would become aware of non-compliance. Auditing standards also limit the audit procedures required to identify non-compliance with laws and regulations to enquiry of the directors and other management and the inspection of regulatory and legal correspondence, if any.

Material misstatements that arise due to fraud can be harder to detect than those that arise from error as they may involve deliberate concealment or collusion.

A further description of our responsibilities is available on the Financial Reporting Council's website at: <https://www.frc.org.uk/auditorsresponsibilities>. This description forms part of our auditor's report.

Use of our report

This report is made solely to the charitable company's members, as a body, in accordance with Chapter 3 of Part 16 of the Companies Act 2006. Our audit work has been undertaken so that we might state to the charitable company's members those matters we are required to state to them in an auditor's report and for no other purpose. To the fullest extent permitted by law, we do not accept or assume responsibility to anyone other than the charitable company and the charitable company's members as a body, for our audit work, for this report, or for the opinions we have formed.

Mitchell Charlesworth (Audit) Limited

**Louise Casey ACA (Senior Statutory Auditor)
for and on behalf of Mitchell Charlesworth (Audit) Limited**

16 December 2024

**Chartered Accountants
Statutory Auditor**

Suite 5.1
Tempest
12 Tithebarn Street
Liverpool
L2 2DT

**VENUS WORKING CREATIVELY WITH YOUNG WOMEN
COMPANY LIMITED BY GUARANTEE
STATEMENT OF FINANCIAL ACTIVITIES
INCLUDING INCOME AND EXPENDITURE ACCOUNT**

FOR THE YEAR ENDED 31 MARCH 2024

Current financial year

		Unrestricted funds 2024 £	Restricted funds 2024 £	Total 2024 £	Total 2023 £
	Notes				
<u>Income and endowments from:</u>					
Donations and legacies	3	13,919	-	13,919	20,262
Charitable activities	4	1,222,926	358,336	1,581,262	1,470,048
Investments	5	3,815	-	3,815	857
Other income	6	26,638	-	26,638	27,116
Total income		1,267,298	358,336	1,625,634	1,518,283
<u>Expenditure on:</u>					
Charitable activities	7	1,132,653	378,420	1,511,073	1,723,559
Net income/(expenditure) before transfers		134,645	(20,084)	114,561	(205,276)
Gross transfers between funds	19	20,800	(20,800)	-	-
Net income/(expenditure) for the year/ Net movement in funds		155,445	(40,884)	114,561	(205,276)
Fund balances at 1 April 2023		344,162	134,950	479,112	684,388
Fund balances at 31 March 2024		499,607	94,066	593,673	479,112

The statement of financial activities includes all gains and losses recognised in the year.

All income and expenditure derive from continuing activities.

The statement of financial activities also complies with the requirements for an income and expenditure account under the Companies Act 2006.

**VENUS WORKING CREATIVELY WITH YOUNG WOMEN
COMPANY LIMITED BY GUARANTEE
STATEMENT OF FINANCIAL ACTIVITIES (CONTINUED)
INCLUDING INCOME AND EXPENDITURE ACCOUNT**

FOR THE YEAR ENDED 31 MARCH 2024

Prior financial year

		Unrestricted funds 2023 £	Restricted funds 2023 £	Total 2023 £
	Notes			
<u>Income and endowments from:</u>				
Donations and legacies	3	20,262	-	20,262
Charitable activities	4	1,085,649	384,399	1,470,048
Investments	5	857	-	857
Other income	6	27,116	-	27,116
Total income		1,133,884	384,399	1,518,283
<u>Expenditure on:</u>				
Charitable activities	7	1,326,543	397,016	1,723,559
Net income/(expenditure) before transfers		(192,659)	(12,617)	(205,276)
Gross transfers between funds	19	(42,713)	42,713	-
Net income/(expenditure) for the year/ Net movement in funds		(235,372)	30,096	(205,276)
Fund balances at 1 April 2022		579,534	104,854	684,388
Fund balances at 31 March 2023		344,162	134,950	479,112

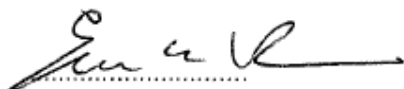
**VENUS WORKING CREATIVELY WITH YOUNG WOMEN
COMPANY LIMITED BY GUARANTEE
BALANCE SHEET**

AS AT 31 MARCH 2024

	Notes	2024 £	£	2023 £	£
Fixed assets					
Intangible assets	12		62,577		78,221
Tangible assets	13		12,797		11,365
			<u>75,374</u>		<u>89,586</u>
Current assets					
Debtors	15	174,036		209,656	
Cash at bank and in hand		403,013		252,931	
		<u>577,049</u>		<u>462,587</u>	
Creditors: amounts falling due within one year	16	(58,750)		(73,061)	
Net current assets			<u>518,299</u>		<u>389,526</u>
Total assets less current liabilities			<u>593,673</u>		<u>479,112</u>
Income funds					
Restricted funds	19		94,066		134,950
<u>Unrestricted funds</u>					
Designated funds	20	231,148		214,449	
General unrestricted funds		<u>268,459</u>		<u>129,713</u>	
			<u>499,607</u>		<u>344,162</u>
			<u>593,673</u>		<u>479,112</u>

These financial statements have been prepared in accordance with the provisions applicable to companies subject to the small companies regime.

The financial statements were approved by the Trustees on 11/12/2024



Emma Bush (Chair)
Trustee

Company registration number 03136727

**VENUS WORKING CREATIVELY WITH YOUNG WOMEN
COMPANY LIMITED BY GUARANTEE**
STATEMENT OF CASH FLOWS
FOR THE YEAR ENDED 31 MARCH 2024

	Notes	2024 £	£	2023 £	£
Cash flows from operating activities					
Cash generated from/(absorbed by) operations	25		153,696		(197,698)
Investing activities					
Purchase of intangible assets		-		(23,800)	
Purchase of tangible fixed assets		(7,429)		(7,138)	
Investment income received		3,815		857	
Net cash used in investing activities			(3,614)		(30,081)
Net cash used in financing activities			-		-
Net increase/(decrease) in cash and cash equivalents			150,082		(227,779)
Cash and cash equivalents at beginning of year			252,931		480,710
Cash and cash equivalents at end of year			403,013		252,931

VENUS WORKING CREATIVELY WITH YOUNG WOMEN COMPANY LIMITED BY GUARANTEE

NOTES TO THE FINANCIAL STATEMENTS

FOR THE YEAR ENDED 31 MARCH 2024

1 Accounting policies

Charity information

Venus Working Creatively with Young Women is a private company limited by guarantee incorporated in England and Wales. The registered office is The Venus Centre, 215 Linacre Lane, Bootle, L20 6AD.

1.1 Accounting convention

The financial statements have been prepared in accordance with the charity's governing document, the Companies Act 2006, FRS 102 "The Financial Reporting Standard applicable in the UK and Republic of Ireland" ("FRS 102") and the Charities SORP "Accounting and Reporting by Charities: Statement of Recommended Practice applicable to charities preparing their accounts in accordance with the Financial Reporting Standard applicable in the UK and Republic of Ireland (FRS 102)" (effective 1 January 2019). The charity is a Public Benefit Entity as defined by FRS 102.

The financial statements are prepared in sterling, which is the functional currency of the charity. Monetary amounts in these financial statements are rounded to the nearest £.

The financial statements have been prepared under the historical cost convention. The principal accounting policies adopted are set out below.

1.2 Going concern

At the time of approving the financial statements, the trustees have a reasonable expectation that the charity has adequate resources to continue in operational existence for the foreseeable future. Thus the trustees continue to adopt the going concern basis of accounting in preparing the financial statements.

1.3 Charitable funds

All income and expenditure together with gains and losses are allocated to a specific charitable fund.

Unrestricted funds are available to spend on activities that further any of the purposes of the charity.

Designated funds are unrestricted funds of the charity which the trustees have decided at their discretion to set aside to use for a specific purpose. Further details of designated funds, together with their purpose, are set out in note 20.

Restricted funds are donations which the donor has specified are to be used solely for particular areas of the charity's work or for specific projects being undertaken by the charity. Further details of restricted funds, together with their purpose, are set out in note 19.

1.4 Income

Income is recognised when the charity has entitlement to the funds, any performance conditions attached to the item(s) of income have been met, it is probable that the income will be received and the amount can be measured reliably.

Income from government and other grants, whether 'capital' grants or 'revenue' grants, is recognised when the charity has entitlement to the funds, any performance conditions attached to the item(s) of income have been met, it is probable that the income will be received and the amount can be measured reliably and is not deferred.

Interest on funds held on deposit is included when receivable and the amount can be measured reliably by the charity; this is normally upon notification of the interest paid or payable by the bank.

**VENUS WORKING CREATIVELY WITH YOUNG WOMEN
COMPANY LIMITED BY GUARANTEE
NOTES TO THE FINANCIAL STATEMENTS (CONTINUED)
FOR THE YEAR ENDED 31 MARCH 2024**

1 Accounting policies

(continued)

1.5 Expenditure

Expenditure is recognised once there is a legal or constructive obligation to transfer economic benefit to a third party, it is probable that a transfer of economic benefits will be required in settlement, and the amount of the obligation can be measured reliably. Expenditure is classified under the following activity headings:

Family Support
Housing Support
Hub Services
Mental Health and Youth Justice
Core

Irrecoverable VAT is charged as a cost against the activity for which the expenditure was incurred.

1.6 Intangible fixed assets other than goodwill

Intangible assets acquired separately from a business are recognised at cost and are subsequently measured at cost less accumulated amortisation and accumulated impairment losses.

Amortisation is recognised so as to write off the cost or valuation of assets less their residual values over their useful lives on the following bases:

Website and CRM	Straight line basis over 5 years
-----------------	----------------------------------

The website is currently under construction and therefore not in use so no amortisation has been charged.

1.7 Tangible fixed assets

Tangible assets are stated at cost less accumulated depreciation and accumulated impairment losses. The cost includes the original purchase price, costs directly attributable to bringing the asset into its working condition for its intended use, dismantling and restoration costs and borrowing costs capitalised.

Plant and machinery and fixtures, fittings, tools and equipment are stated at cost less accumulated depreciation and accumulated impairment losses.

Depreciation is provided at the following annual rates in order to write each asset off over its anticipated useful economic life. A full year's depreciation charge is charged in the year of acquisition and no depreciation is charged in the year of disposal.

Short Leasehold land and buildings	Straight line basis over 5 years
Fixtures and equipment	Straight line basis over 4 years
Motor vehicles	Straight line basis over 4 years

Subsequent costs are included in the assets carrying amount or recognised as a separate asset, as appropriate, only when it is probable that economic benefits associated with the item will flow to the charitable company and the cost can be measured reliably.

Repairs, maintenance and minor inspection costs are expenses as incurred.

The gain or loss arising on the disposal of an asset is determined as the difference between the sale proceeds and the carrying value of the asset, and is recognised in the statement of financial activities.

**VENUS WORKING CREATIVELY WITH YOUNG WOMEN
COMPANY LIMITED BY GUARANTEE
NOTES TO THE FINANCIAL STATEMENTS (CONTINUED)
FOR THE YEAR ENDED 31 MARCH 2024**

1 Accounting policies

(continued)

1.8 Impairment of fixed assets

At each reporting end date, the charity reviews the carrying amounts of its tangible and intangible assets to determine whether there is any indication that those assets have suffered an impairment loss. If any such indication exists, the recoverable amount of the asset is estimated in order to determine the extent of the impairment loss (if any).

1.9 Cash and cash equivalents

Cash and cash equivalents include cash in hand, deposits held at call with banks, other short-term liquid investments with original maturities of three months or less, and bank overdrafts. Bank overdrafts are shown within borrowings in current liabilities.

1.10 Financial instruments

The charity has elected to apply the provisions of Section 11 'Basic Financial Instruments' and Section 12 'Other Financial Instruments Issues' of FRS 102 to all of its financial instruments.

Financial instruments are recognised in the charity's balance sheet when the charity becomes party to the contractual provisions of the instrument.

Financial assets and liabilities are offset, with the net amounts presented in the financial statements, when there is a legally enforceable right to set off the recognised amounts and there is an intention to settle on a net basis or to realise the asset and settle the liability simultaneously.

Basic financial assets

Basic financial assets, which include debtors and cash and bank balances, are initially measured at transaction price including transaction costs and are subsequently carried at amortised cost using the effective interest method unless the arrangement constitutes a financing transaction, where the transaction is measured at the present value of the future receipts discounted at a market rate of interest. Financial assets classified as receivable within one year are not amortised.

Basic financial liabilities

Basic financial liabilities, including creditors and bank loans are initially recognised at transaction price unless the arrangement constitutes a financing transaction, where the debt instrument is measured at the present value of the future payments discounted at a market rate of interest. Financial liabilities classified as payable within one year are not amortised.

Debt instruments are subsequently carried at amortised cost, using the effective interest rate method.

Trade creditors are obligations to pay for goods or services that have been acquired in the ordinary course of operations from suppliers. Amounts payable are classified as current liabilities if payment is due within one year or less. If not, they are presented as non-current liabilities. Trade creditors are recognised initially at transaction price and subsequently measured at amortised cost using the effective interest method.

Derecognition of financial liabilities

Financial liabilities are derecognised when the charity's contractual obligations expire or are discharged or cancelled.

1.11 Taxation

The charity is exempt from tax on income and gains falling within section 505 of the Taxes Act 1988 or section 252 of the Taxation of Chargeable Gains Act 1992 to the extent that these are applied to its charitable objects.

**VENUS WORKING CREATIVELY WITH YOUNG WOMEN
COMPANY LIMITED BY GUARANTEE**
NOTES TO THE FINANCIAL STATEMENTS (CONTINUED)
FOR THE YEAR ENDED 31 MARCH 2024

1 Accounting policies **(continued)**

1.12 Employee benefits

The cost of any unused holiday entitlement is recognised in the period in which the employee's services are received.

Termination benefits are recognised immediately as an expense when the charity is demonstrably committed to terminate the employment of an employee or to provide termination benefits.

1.13 Retirement benefits

Payments to defined contribution retirement benefit schemes are charged as an expense as they fall due.

1.14 Leases

Rentals payable under operating leases, including any lease incentives received, are charged as an expense on a straight line basis over the term of the relevant lease.

2 Critical accounting estimates and judgements

In the application of the charity's accounting policies, the trustees are required to make judgements, estimates and assumptions about the carrying amount of assets and liabilities that are not readily apparent from other sources. The estimates and associated assumptions are based on historical experience and other factors that are considered to be relevant. Actual results may differ from these estimates.

The estimates and underlying assumptions are reviewed on an ongoing basis. Revisions to accounting estimates are recognised in the period in which the estimate is revised where the revision affects only that period, or in the period of the revision and future periods where the revision affects both current and future periods.

There were considered to be no critical accounting estimates or judgements applied in the preparation of these financial statements.

3 Donations and legacies

	Unrestricted funds	Unrestricted funds
	2024	2023
	£	£
Donations and gifts	13,919	20,262
	<u> </u>	<u> </u>

**VENUS WORKING CREATIVELY WITH YOUNG WOMEN
COMPANY LIMITED BY GUARANTEE
NOTES TO THE FINANCIAL STATEMENTS (CONTINUED)
FOR THE YEAR ENDED 31 MARCH 2024**

4 Charitable activities	Family Support	Housing Support	Hub Services	Mental Health and Youth Justice	Core	Total 2024	Total 2023
	2024 £	2024 £	2024 £	2024 £	2024 £	£	£
Traineeships and Secondments	-	-	-	279,321	8,920	288,241	244,127
Commissioned Services	235,750	107,231	38,270	283,724	(509)	664,466	652,259
Performance related grants	135,484	875	172,253	68,649	70,441	447,702	418,692
Housing Benefits	-	180,700	-	-	-	180,700	151,214
Other income	-	-	-	-	153	153	3,756
	371,234	288,806	210,523	631,694	79,005	1,581,262	1,470,048
Analysis by fund							
Unrestricted funds	232,000	287,931	47,442	580,048	75,505	1,222,926	1,085,649
Restricted funds	139,234	875	163,081	51,646	3,500	358,336	384,399
	371,234	288,806	210,523	631,694	79,005	1,581,262	1,470,048

**VENUS WORKING CREATIVELY WITH YOUNG WOMEN
COMPANY LIMITED BY GUARANTEE**
NOTES TO THE FINANCIAL STATEMENTS (CONTINUED)
FOR THE YEAR ENDED 31 MARCH 2024

4 Charitable activities

(continued)

For the year ended 31 March 2023

	Family Support	Housing Support	Hub Services	Mental Health and Youth Justice	Core	Total 2023
	£	£	£	£	£	£
Traineeships and Secondments	-	-	-	239,437	4,690	244,127
Commissioned Services	194,101	145,006	8,600	300,369	4,183	652,259
Performance related grants	112,398	7,490	90,549	177,737	30,518	418,692
Housing Benefits	-	151,214	-	-	-	151,214
Other income	-	538	-	-	3,218	3,756
	<u>306,499</u>	<u>304,248</u>	<u>99,149</u>	<u>717,543</u>	<u>42,609</u>	<u>1,470,048</u>
Analysis by fund						
Unrestricted funds	190,064	230,643	15,381	606,952	42,609	1,085,649
Restricted funds	116,435	73,605	83,768	110,591	-	384,399
	<u>306,499</u>	<u>304,248</u>	<u>99,149</u>	<u>717,543</u>	<u>42,609</u>	<u>1,470,048</u>

5 Investments

	Unrestricted funds	Unrestricted funds
	2024 £	2023 £
Interest receivable	<u>3,815</u>	<u>857</u>

6 Other income

	Unrestricted funds	Unrestricted funds
	2024 £	2023 £
Insurance claims	<u>26,638</u>	<u>27,116</u>

**VENUS WORKING CREATIVELY WITH YOUNG WOMEN
COMPANY LIMITED BY GUARANTEE
NOTES TO THE FINANCIAL STATEMENTS (CONTINUED)
FOR THE YEAR ENDED 31 MARCH 2024**

7 Charitable activities	Family Support	Housing Support	Hub Services	Mental Health and Youth Justice	Core	Total 2024	Total 2023
	2024 £	2024 £	2024 £	2024 £	2024 £	£	£
Salary costs	210,835	153,026	108,681	438,196	252,744	1,163,482	1,357,860
Depreciation and impairment	-	-	-	-	21,640	21,640	6,561
Provisions for service users	11,675	3,232	40,565	2,717	5,378	63,567	50,437
Overheads	2,391	7,843	3,781	36,846	67,961	118,822	177,349
Rent	-	73,329	-	-	-	73,329	58,936
Other	-	-	-	-	2,874	2,874	295
Other staff costs	4,972	1,448	1,646	5,626	10,459	24,151	23,499
Bad debts	-	-	-	-	897	897	7,831
	229,873	238,878	154,673	483,385	361,953	1,468,762	1,682,768
Share of governance costs (see note 8)	3,275	566	5,495	8,804	24,171	42,311	40,791
	233,148	239,444	160,168	492,189	386,124	1,511,073	1,723,559
Analysis by fund							
Unrestricted funds	110,629	226,350	5,509	419,027	371,138	1,132,653	1,326,543
Restricted funds	122,519	13,094	154,659	73,162	14,986	378,420	397,016
	233,148	239,444	160,168	492,189	386,124	1,511,073	1,723,559

**VENUS WORKING CREATIVELY WITH YOUNG WOMEN
COMPANY LIMITED BY GUARANTEE**
NOTES TO THE FINANCIAL STATEMENTS (CONTINUED)
FOR THE YEAR ENDED 31 MARCH 2024

7 Charitable activities

(continued)

For the year ended 31 March 2023

	Family Support	Housing Support	Hub Services	Mental Health and Youth Justice	Core	Total 2023
	£	£	£	£	£	£
Staff costs	277,838	166,623	106,870	569,486	237,043	1,357,860
Depreciation and impairment	-	-	-	-	6,561	6,561
Provisions for service users	9,958	1,654	26,875	6,706	5,244	50,437
Overheads	5,460	37,909	4,384	55,847	73,749	177,349
Rent	-	58,936	-	-	-	58,936
Other	77	(22)	-	-	240	295
Other staff costs	3,429	1,255	692	3,046	15,077	23,499
Bad debts	-	-	-	-	7,831	7,831
	<u>296,762</u>	<u>266,355</u>	<u>138,821</u>	<u>635,085</u>	<u>345,745</u>	<u>1,682,768</u>
Share of governance costs (see note 8)	573	156	13	2,615	37,434	40,791
	<u>297,335</u>	<u>266,511</u>	<u>138,834</u>	<u>637,700</u>	<u>383,179</u>	<u>1,723,559</u>
Analysis by fund						
Unrestricted funds	210,458	206,451	12,937	528,645	368,052	1,326,543
Restricted funds	86,877	60,060	125,897	109,055	15,127	397,016
	<u>297,335</u>	<u>266,511</u>	<u>138,834</u>	<u>637,700</u>	<u>383,179</u>	<u>1,723,559</u>

8 Support costs

	Support costs	Governance costs	2024	2023
	£	£	£	£
Audit fees	-	6,750	6,750	6,355
Accountancy	-	4,873	4,873	4,745
Legal and professional	-	30,491	30,491	29,228
Governance costs	-	197	197	463
	<u>-</u>	<u>42,311</u>	<u>42,311</u>	<u>40,791</u>
Analysed between Charitable activities	-	42,311	42,311	40,791

**VENUS WORKING CREATIVELY WITH YOUNG WOMEN
COMPANY LIMITED BY GUARANTEE**
NOTES TO THE FINANCIAL STATEMENTS (CONTINUED)
FOR THE YEAR ENDED 31 MARCH 2024

9 Auditor's remuneration

Fees payable to the charity's auditor and associates:	2024 £	2023 £
Audit of the charity's annual accounts	6,750	6,355
Non-audit services		
All other non-audit services	4,873	4,745

10 Trustees

None of the trustees (or any persons connected with them) received any remuneration or benefits from the charity during the year.

11 Employees

The average monthly number of employees during the year was:

	2024 Number	2023 Number
Administration and finance	11	7
Management	8	5
Support	34	45
Total	53	57

Employment costs	2024 £	2023 £
Wages and salaries	1,050,892	1,223,970
Social security costs	83,232	91,893
Other pension costs	29,358	41,997
	1,163,482	1,357,860

The number of employees whose annual remuneration was more than £60,000 is as follows:

	2024 Number	2023 Number
£60,001 to £70,000	1	1

Contributions totalling £1,707 (2023: £1,422) were made to defined contribution pension schemes on behalf of employees whose emoluments exceed £60,000.

**VENUS WORKING CREATIVELY WITH YOUNG WOMEN
COMPANY LIMITED BY GUARANTEE**
NOTES TO THE FINANCIAL STATEMENTS (CONTINUED)
FOR THE YEAR ENDED 31 MARCH 2024

12 Intangible fixed assets

	Website and CRM £
Cost	
At 1 April 2023 and 31 March 2024	78,221
Amortisation and impairment	
At 1 April 2023	-
Amortisation charged for the year	15,644
At 31 March 2024	15,644
Carrying amount	
At 31 March 2024	62,577
At 31 March 2023	78,221

13 Tangible fixed assets

	Short Leasehold land and buildings £	Fixtures and equipment £	Motor vehicles £	Total £
Cost				
At 1 April 2023	60,271	35,297	10,418	105,986
Additions	-	7,429	-	7,429
At 31 March 2024	60,271	42,726	10,418	113,415
Depreciation and impairment				
At 1 April 2023	55,173	29,032	10,418	94,623
Depreciation charged in the year	1,699	4,296	-	5,995
At 31 March 2024	56,872	33,328	10,418	100,618
Carrying amount				
At 31 March 2024	3,399	9,398	-	12,797
At 31 March 2023	5,099	6,266	-	11,365

14 Financial instruments

	2024 £	2023 £
Carrying amount of financial assets		
Debt instruments measured at amortised cost	568,551	349,431
Carrying amount of financial liabilities		
Measured at amortised cost	58,377	69,530

**VENUS WORKING CREATIVELY WITH YOUNG WOMEN
COMPANY LIMITED BY GUARANTEE**
NOTES TO THE FINANCIAL STATEMENTS (CONTINUED)
FOR THE YEAR ENDED 31 MARCH 2024

15 Debtors

	2024	2023
	£	£
Amounts falling due within one year:		
Trade debtors	164,893	94,109
Other debtors	1,018	2,391
Prepayments and accrued income	8,125	113,156
	<u>174,036</u>	<u>209,656</u>

16 Creditors: amounts falling due within one year

	2024	2023
	£	£
Other taxation and social security	-	3,531
Deferred income	21,869	22,560
Trade creditors	3,068	15,050
Other creditors	1,597	5,700
Accruals	32,216	26,220
	<u>58,750</u>	<u>73,061</u>

17 Deferred income

	2024	2023
	£	£
Other deferred income	<u>21,869</u>	<u>22,560</u>

Deferred income is included in the financial statements as follows:

	2024	2023
	£	£
Deferred income is included within:		
Current liabilities	<u>21,869</u>	<u>22,560</u>
Movements in the year:		
Deferred income at 1 April 2023	22,560	63,391
Released from previous periods	(22,560)	(63,391)
Resources deferred in the year	<u>21,869</u>	<u>22,560</u>
Deferred income at 31 March 2024	<u>21,869</u>	<u>22,560</u>

**VENUS WORKING CREATIVELY WITH YOUNG WOMEN
COMPANY LIMITED BY GUARANTEE**
NOTES TO THE FINANCIAL STATEMENTS (CONTINUED)
FOR THE YEAR ENDED 31 MARCH 2024

18 Retirement benefit schemes

Defined contribution schemes

The charity operates a defined contribution pension scheme for all qualifying employees. The assets of the scheme are held separately from those of the charity in an independently administered fund.

The charge to profit or loss in respect of defined contribution schemes was £29,358 (2023 - £41,997).

**VENUS WORKING CREATIVELY WITH YOUNG WOMEN
COMPANY LIMITED BY GUARANTEE
NOTES TO THE FINANCIAL STATEMENTS (CONTINUED)
FOR THE YEAR ENDED 31 MARCH 2024**

19 Restricted funds

The income funds of the charity include restricted funds comprising the following unexpended balances of donations and grants held on trust for specific purposes:

	Balance at 1 April 2022 £	Movement in funds			Transfers £	Balance at 1 April 2023 £	Movement in funds			Transfers £	Balance at 31 March 2024 £
		Income £	Expenditure £				Income £	Expenditure £			
King Centre Development	24,029	-	(15,127)		(8,902)	-	-	-		-	-
Smallwood - Possibilities	696	40,000	(6,115)		-	34,581	36,000	(19,731)		(6,000)	44,850
Steve Morgan Foundation - IT Infrastructure	11,500	-	-		-	11,500	-	(11,486)		-	14
IAPT Partnership Training	10,520	-	(332)		-	10,188	-	-		-	10,188
Big Lottery Fund - Step Together	11,955	58,594	(41,029)		-	29,520	59,989	(53,788)		(14,800)	20,921
The National Lottery Community Fund	-	-	-		-	-	61,090	(61,090)		-	-
Tudor Trust	16,490	-	-		(16,490)	-	50,000	(50,000)		-	-
Police Commissioner	-	29,955	(47,128)		17,173	-	19,925	(19,493)		-	432
Battersea Arts Centre	1,500	-	(3,172)		1,672	-	-	-		-	-
Energy Saving Grants	(3,361)	20,518	(31,099)		13,942	-	-	-		-	-
John Moores Foundation	2,802	11,750	(39,074)		24,522	-	-	-		-	-
Birmingham City Council	4,500	-	(4,500)		-	-	-	-		-	-
Steve Morgan Foundation - Vulnerable Families	4,572	33,750	(28,716)		(9,606)	-	-	-		-	-
Smallwood - ROSA	5,624	8,000	(35,930)		22,306	-	1,250	(1,250)		-	-
Grantscape	8,000	8,000	(14,616)		(1,384)	-	-	-		-	-
Canal & River Trust	6,027	-	(2,527)		(3,500)	-	-	-		-	-
Halton Activity Fund / Merseyside Holiday Fund	-	24,091	(17,132)		-	6,959	20,244	(19,730)		-	7,473
Halton International Cafe	-	5,000	(1,906)		(1,138)	1,956	-	(1,956)		-	-
Supporting Homeless Activities	-	2,490	(202)		-	2,288	-	(2,288)		-	-
Arts Council	-	-	-		7,827	7,827	-	(7,827)		-	-
Winter clothing	-	3,500	(3,480)		-	20	2,000	(2,020)		-	-
Housing Benefit	-	66,115	(57,952)		-	8,163	-	(8,163)		-	-
D-Fuse Projects / D-Fuse Active	-	30,615	(8,667)		-	21,948	3,671	(25,619)		-	-
Stonehaven	-	-	-		-	-	17,451	(17,451)		-	-

**VENUS WORKING CREATIVELY WITH YOUNG WOMEN
COMPANY LIMITED BY GUARANTEE
NOTES TO THE FINANCIAL STATEMENTS (CONTINUED)
FOR THE YEAR ENDED 31 MARCH 2024**

19 Restricted funds	(continued)					
Children in Need Star Centre Grants	-	42,021	(38,312)	(3,709)	-	-
Sefion CVS	-	-	-	-	300	-
Sefion Emotional Achievement Service (SEAS)	-	-	-	-	(300)	-
P H Holt	-	-	-	-	8,050	-
Merseyside Recycling and Waste Authority	-	-	-	-	10,000	10,000
LCR Multiply	-	-	-	-	3,500	-
United Utilities	-	-	-	-	17,007	-
Community Foundation	-	-	-	-	40,000	-
Albert Gubay	-	-	-	-	6,984	-
	-	-	-	-	(686)	189
	<u>104,854</u>	<u>384,399</u>	<u>(397,016)</u>	<u>42,713</u>	<u>134,950</u>	<u>(20,800)</u>
						<u>94,066</u>

King Centre Development: This income has supported the feasibility study and preliminary designs for our planned move to The King Centre, allowing us to greatly increase our capacity and giving us a customised building in which to provide community support. Due to the increase in the cost of construction post covid and the war in the Ukraine the project was deemed unfeasible and was closed down.

Smallwood - Possibilities: As a Smallwood Community Grant Partner we are able to distribute grants to women in need to provide, amongst other things, debt relief, pathways back to employment or household essentials. This is the third year of a 4th year of this programme, due to end in December 2024.

The Steve Morgan Foundation - IT Infrastructure: funding received to help us undertake a web and systems rebuild.

IAPT Partnership Training: funding for training available specifically for our Child and young people counsellors in the Star Centre.

Big Lottery: This was the final portion of our 5 year Step Together project, supporting women who had children inside the care system. The project ended in September 2021 and was refunded for continuation in April 2022 for 3 years.

The National Lottery Community Fund, second year of a three year continuation grant for Step Together which supports women who have had children removed from their care. The project is due to end in April 2025. They also supported increased activity in response to the Cost Of Living Crisis. This support enabled us to provide extra Open Access Sessions, more emergency food parcels, winter clothing, Data, and energy vouchers.

Tudor Trust supported both our family support programme and increased activity in the Star Centre.

Police Commissioner: This is the continuation of our Stonehaven project. In conjunction with Merseyside Police, we have set up a team of Youth Workers and Therapists who work with young people to reduce the risk of involvement in county lines activity. The programme has been extended for a further year and us due to finish in March 2023 although we expect a fourth year of the programme.

VENUS WORKING CREATIVELY WITH YOUNG WOMEN COMPANY LIMITED BY GUARANTEE NOTES TO THE FINANCIAL STATEMENTS (CONTINUED) FOR THE YEAR ENDED 31 MARCH 2024

19 Restricted funds

(continued)

Battersea Arts Centre: This is the final installment of our "Womens Manifesto for Living Well with Debt" programme. This is an ongoing project which is due to end in March 2022.

Energy Savings Grant: This was the continuation of our Money Management programme, helping women to reduce their fuel and utility bills by accessing energy saving advice from our dedicated Debt Management team. This project ended in June 2022. We applied for additional funds but was turned down. The service was refunded by United Utilities Trust in June 2023.

John Moores Foundation: This is the first half of a 2 year grant to support our Open Access service, our daily drop in where anyone can access support on a variety of issues.

Birmingham City Council: This grant will allow us to support Birmingham City Council's "Stop the Sharks" campaign, educating people on the dangers of loan sharks and helping them to recognise loan shark activity. This project finished in Summer 2022.

The Steve Morgan Foundation - Vulnerable Families: This is the continuation of our Family Support programme. This grant ended in March 2023 and was not refunded.

Smallwood - Rosa: an 18 month long donation towards our Open Access Service for Women. This fund ended in December 2023.

Grantscape: Burbobank Extension Fund. This grant is to provide specialist Youth Worker and Therapist for our "Not Slipping Through the Net" programme. This grant ended in December 2022.

Canal and River Trust: This fund will provide families with outdoor activities and adventures on local canals and waterways. The fund covers the purchase of bicycles, allowing us to run cycle groups, art activities to develop a stretch of the canal, and staff support. This project ended in Summer 2022.

Halton Activity Fund / Merseyside Holiday Fund: We received funding from Halton Council's Holiday Activity Fund (HAF) to take families on a two night break to Youth Hostel Association.

Halton International Café is a drop in service for refugee and asylum seekers needing help and support in resettlement. It offered a safe place to meet with others facing similar barriers.

Supporting Homeless Activities: with support of the Community Impact Fund we were able to trial a new service for our homeless clients, the Bacon Butty Club. This is a moving on activity supporting peer friendships, using kitchen appliances like air fryers, slow cookers and the washing machine.

Arts Council England funded 3 artists to help us plan for a new home for Venus.

Winter clothing funding from SCVS: This Fund was to purchase Vouchers for service Users & their families for winter clothing or coats.

Housing benefit: Housing benefit is received via Sefton MBC to support the rent costs of our 20 supported living properties which are part of our work with Sefton Supported Housing Consortium. This is restricted funding and can only be spent on rents to our landlords.

D-Fuse projects: Digital – working within a school setting with children/Teenagers who are struggling with mental health or at risk of being involved in criminal activities. Teaching them digital skills, such as photography, filming making & animation. The aim of the project was for them to tell their story through digital media.

Stonehaven: funded through the Police Commissioner Service – this is extension of the support provide through our Youth Justice programme and provides Information Advice and Guidance to young people at risk or involved in crime, alongside outreach therapy.

VENUS WORKING CREATIVELY WITH YOUNG WOMEN

COMPANY LIMITED BY GUARANTEE

NOTES TO THE FINANCIAL STATEMENTS (CONTINUED)

FOR THE YEAR ENDED 31 MARCH 2024

19	Restricted funds	(continued)
	Children in Need: This fund supported our Star Centre, allowing us to increase our youth mental health support through bespoke training for our therapists and dedicated youth workers. This grant ended in March 22 and was not refunded.	
	Sefton CVS – Funding for Winter Clothing for Service Users.	
	Sefton Emotional Achievement Service (SEAS) is a group of charities who support bespoke emotional wellbeing support for children and young people. Funding from SEAS supported therapeutic interventions in schools.	
	P H Holt Foundation supported our Family Triage Worker to provide crisis intervention.	
	Merseyside Recycling and Waste Authority supported series of workshops for women in the community who were interested in reuse, mending and creating their own clothes. The sessions were delivered by artist Emma Summerscales during our second pop up money management shop and within the Venus Centre.	
	LCR Multiply is a maths intervention delivered by the Workers Educational Association, supported by ESF funding. The aim of the funding is to increase maths skills using a variety of techniques. Venus is delivering budgeting and money management workshops and one to one sessions with this funding. The funding is for this financial year but we expect it to continue into 2024/25.	
	United Utilities Trust Fund supports our money management worker to give advice and guidance concerning affordable utilities, dealing with arrears and making applications to trust funds. This is the second year of funding, due to end in October 2024.	
	Community Foundation: Donated via the Community Foundation, The Financial Planning Association supported the second iteration of our Pop Up Money Management Shop.	
	Albert Gubay Foundation has provided a two year grant to support our Bacon Butty Club, a peer group for men who have experienced homelessness.	

**VENUS WORKING CREATIVELY WITH YOUNG WOMEN
COMPANY LIMITED BY GUARANTEE**
NOTES TO THE FINANCIAL STATEMENTS (CONTINUED)
FOR THE YEAR ENDED 31 MARCH 2024

20 Designated funds

The income funds of the charity include the following designated funds which have been set aside out of unrestricted funds by the trustees for specific purposes:

	Balance at 1 April 2022	Transfers	Balance at 1 April 2023	Transfers	Balance at 31 March 2024
	£	£	£	£	£
Fixed Asset Fund	65,208	24,378	89,586	(14,212)	75,374
Cessation Contingency Fund	129,144	(4,281)	124,863	30,911	155,774
Utility Fund	25,000	(25,000)	-	-	-
	<u>219,352</u>	<u>(4,903)</u>	<u>214,449</u>	<u>16,699</u>	<u>231,148</u>

The Fixed Asset Fund represents the ring fencing of assets which are not available as port of the general liquid reserves of the charity.

The Cessation Contingency Fund is designed to provide for costs likely to be incurred should the charity cease to operate.

The Utility Fund has been created to meet a potential liability to Sefton MBC for the undercharging of utility supplies.

**VENUS WORKING CREATIVELY WITH YOUNG WOMEN
COMPANY LIMITED BY GUARANTEE
NOTES TO THE FINANCIAL STATEMENTS (CONTINUED)
FOR THE YEAR ENDED 31 MARCH 2024**

21	Analysis of net assets between funds	Unrestricted funds		Designated funds		Restricted funds		Total Unrestricted funds		Designated funds		Restricted funds		Total	
		2024	£	2024	£	2024	£	2024	£	2023	£	2023	£	2023	£
	Fund balances at 31 March 2024 are represented by:														
	Intangible fixed assets	-		62,577		-		62,577		-		-		78,221	
	Tangible assets	-		12,797		-		12,797		-		-		11,365	
	Current assets/(liabilities)	268,459		155,774		94,066		518,299		129,713		134,950		389,526	
		268,459		231,148		94,066		593,673		129,713		134,950		479,112	

**VENUS WORKING CREATIVELY WITH YOUNG WOMEN
COMPANY LIMITED BY GUARANTEE
NOTES TO THE FINANCIAL STATEMENTS (CONTINUED)
FOR THE YEAR ENDED 31 MARCH 2024**

22 Operating lease commitments

At the reporting end date the charity had outstanding commitments for future minimum lease payments under non-cancellable operating leases, which fall due as follows:

	2024	2023
	£	£
Within one year	5,227	5,386
Between two and five years	4,224	9,451
	<u>9,451</u>	<u>14,837</u>

23 Related party transactions

Remuneration of key management personnel

The remuneration of key management personnel is as follows.

	2024	2023
	£	£
Aggregate compensation	<u>275,267</u>	<u>296,033</u>

The Key Management Personnel are as follows:

Chief Executive Officer:	Susan Potts
Family Support Lead:	Clare Kavanagh (resigned December 2023)
Independence Support Lead:	Nicola Thomas (resigned December 2023)
Housing and Resettlement Support Lead:	Carlie Machell
Children and Young People Lead:	Jean Hodgkinson
Executive Assistant to CEO:	Louise Boynton
Finance Officer:	Lyn Robinson
Finance Officer:	Seelan Manoharam (appointed 17 April 2023)

During the financial year £nil (2023: £10,137) was paid to Rule of Three Arts Ltd of which Susan Potts is a director. Rule of Three Arts Ltd also gave a donation of £nil (2023: £846) towards the International Coffee Morning.

24 Company Limited By Guarantee

Venus Working Creatively with Young Women is incorporated under the Companies Act as a company limited by guarantee. The liability of the members is limited to £10.

**VENUS WORKING CREATIVELY WITH YOUNG WOMEN
COMPANY LIMITED BY GUARANTEE**
NOTES TO THE FINANCIAL STATEMENTS (CONTINUED)
FOR THE YEAR ENDED 31 MARCH 2024

25	Cash generated from operations	2024 £	2023 £
	Surplus/(deficit) for the year	114,561	(205,276)
	Adjustments for:		
	Investment income recognised in statement of financial activities	(3,815)	(857)
	Depreciation and impairment of tangible fixed assets	21,639	6,561
	Movements in working capital:		
	Decrease in debtors	35,621	87,000
	(Decrease) in creditors	(13,619)	(44,295)
	(Decrease) in deferred income	(691)	(40,831)
	Cash generated from/(absorbed by) operations	153,696	(197,698)
26	Analysis of changes in net funds		
	The charity had no debt during the year.		

Document Activity Report

Document Sent

Mon, 16 Dec 2024 16:11:01 GMT

Document Activity History

Document history shows most recent activity first

Date	Activity
Tue, 17 Dec 2024 08:44:17 GMT	Louise Boynton viewed the document
Mon, 16 Dec 2024 16:51:46 GMT	Seelan Manoharan viewed the document
Mon, 16 Dec 2024 16:46:53 GMT	Sue Potts viewed the document
Mon, 16 Dec 2024 16:31:57 GMT	Lyn Robinson viewed the document
Mon, 16 Dec 2024 16:31:56 GMT	Lyn Robinson viewed the document

You can verify that this is a genuine Portal document by uploading it to the following secure web page:

<http://bwm.accountantspace.co.uk/messages/VerifyDocument>