

County Durham and Darlington NHS Foundation Trust Charity

Annual Report: 2024/25



Together, we care.



Contents:

3	Chair's Foreword
4 - 5	Chief Executive Introduction
6	Reference and Administrative Details
7 - 8	Structure, Governance and Management
8 - 9	Objectives
10	Public Benefit
11 - 16	Fundraising and Donation Highlights
16	Risk Management
17 - 18	Income & Expenditure Summary
19	Thank You
20 - 21	Charity Team Update



Together, we care.





Chair's Foreword

I am incredibly proud to represent CDDFT Charity and to share some of the wonderful achievements from 2024-25. Over the past year, despite challenges our charity has continued to positively impact on patient care and the wellbeing of our staff, in line with our ambition, thanks to the tireless efforts of our supporters, staff, volunteers, and corporate partners.

From inspiring fundraising events such as the NHS Big Tea and the Great North Run, to the generous donations and legacy gifts that continue to make a lasting difference, 2024-25 has been a year where our community has truly come together.

We have also seen a rise in engagement across our social media channels, helping us to share more stories, raise awareness, and inspire even more support.

As we look ahead to 2025-26, we want to build on this momentum, by building strong partnerships, founded on solid foundations, which allow us to invest further in initiatives that directly improve patient care and staff wellbeing across County Durham and Darlington NHS Foundation Trust, in line with needs of our patients and communities.

On behalf of the Board of Trustees, I would like to thank everyone who has supported us throughout the year. Together, we are making a real difference – and I am confident that we can seize the opportunities before us so that the future holds even greater things for our charity.

Thank you.

Kathryn Featherstone

Chair, CDDFT Charity Committee

County Durham and Darlington NHS Foundation Trust



Together, we care.



Chief Executive Introduction

Foreword from the New CEO

Hello, my name is Steve Russell, and I started as Chief Executive of CDDFT in September 2025. Although I wasn't in post during the year covered, I'm pleased to introduce the 2024/25 Annual Report. I would like to thank our charity team for their hard work, and to recognise the continued kindness and support we receive from our communities.



This has been a financially challenging year, with change across the charity. As we look ahead, we have an important opportunity to review our approach, strengthen our foundations, and ensure our work continues to reflect the needs of our patients and communities.

I'm looking forward to meeting our partners, local businesses and supporters. Your generosity helps us go beyond what NHS budgets can cover, enhancing services, improving patient experience, and funding both the "little things" that make a big difference and the major campaigns that help shape our future.

Although the year has brought challenges, I am optimistic. With clear priorities, strong relationships and a refreshed focus, I believe the year ahead can bring real progress and that, with your support, our charity can make a real difference to the patients and communities we serve.

Steve Russell
Chief Executive
20th November 2025



CEO statement

It gives me great pleasure to introduce this year's annual report for CDDFT Charity. The last year has been a year of dedication, generosity, and progress – and I am proud of everything we have achieved together.

Across our hospitals and in our communities, the impact of support can be seen every day. From funding vital



Together, we care.



equipment to supporting patient care and staff wellbeing, donations and fundraising efforts are making a lasting difference.

One of the standout moments of this year was seeing one of our ward managers take on an incredible 54k ultra-marathon to raise funds for our Stroke Ward at University Hospital of North Durham. Their determination and passion not only raised money but also inspired so many others across the Trust.

Thanks to our supporter's generosity, we were able to purchase handheld bladder scanners for our community nursing teams – a vital piece of equipment that is already improving care and helping patients in their own homes.

CDDFT Charity plays a vital role in supporting our Trust's mission, to provide high-quality, safe, compassionate and joined-up care, by funding projects and initiatives that go beyond what the NHS alone can provide.

Fundraising activities help to create more comfortable and welcoming environments for our patients; the Charity's work directly contributes to improving the quality of care we deliver every day.

Looking ahead to 2025-26, we are committed to growing the charity further – building stronger partnerships, delivering more fundraising opportunities, and ensuring that every pound raised goes where it is needed most.

On behalf of the charity team, I would like to thank everyone who has supported us this year. Whether through fundraising, volunteering, or donating, you are helping us deliver real change and better care for the people of County Durham and Darlington.

Sue Jacques

Chief Executive

County Durham and Darlington NHS Foundation Trust



Together, we care.



Reference and Administrative Details

The County Durham and Darlington NHS Foundation Trust Charitable Fund is registered with the Charity Commission in accordance with the Charities Act 2011 (Registration number 1053467). This is the umbrella charity under which all individual funds are registered. The notes to the accounts distinguish the types of fund held and disclose separately all material funds.

Funds received by the Charity are administered as funds held on trust for purposes relating to the health service in accordance with the National Health Service Act 1977 and National Health Service and Community Care Act 1990.

The County Durham and Darlington NHS Foundation Trust is the Corporate Trustee of the Charity as governed by the law applicable to Trusts, principally the Trustee Act 2000 and the law applicable to Charities, the Charities Act 2011.

The principal office of the Corporate Trustee is as follows:

Principal Office

Trust Headquarters, Memorial Hospital, Hollyhurst Road, Darlington, DL3 6HX

The professional advisors of the Corporate Trustee are as follows:

Banker

GBS National Westminster
PO Box 64388
2 Devonshire Square
London EC2P 2GR

Investment Manager

RBC Brewin Dolphin
Time Central
32 Gallowgate
Newcastle upon Tyne NE1 4SR

Internal Auditor

Audit One
Tanfield Lea Business Park
Tanfield Lea
Stanley
Durham
DH9 9DB

Independent Examiner

Robson Laidler Accountants Limited
Fernwood House
Fernwood Road
Jesmond
Newcastle Upon Tyne
NE2 1TJ

Solicitor

Ward Hadaway, Sandgate House, 102 Quayside
Newcastle upon Tyne NE1 3DY



Together, we care.



Structure, Governance and Management

The Charity has a Corporate Trustee, County Durham and Darlington NHS Foundation Trust, with the members of the Trust Board responsible for its governance.

The members of the Trust Board who served during the financial year and to the date the annual report and accounts were signed were as follows:

Professor Richard Scothon	- Group Chairman
Sue Jacques	- Chief Executive
Jeremy Cundall	- Executive Medical Director
Lorraine Nelson	- Executive Director of Operations
David Brown	- Executive Director of Finance
Kathryn Featherstone	- Non-Executive Director
Lisa Quinn	- Non-Executive Director (effective from 01.06.23)
Michael Bretherick	- Non-Executive Director
Steve Crosland	- Non-Executive Director
David Jackson	- Non-Executive Director (effective from 01.01.24)
Dr Shirley Crawshaw	- Non-Executive Director

Members of the NHS Foundation Trust Board are not individual trustees but act as agents under charity law on behalf of the Corporate Trustee.

Non-Executive members of the Board are appointed by the Trust Council of Governors and Executive members are subject to recruitment by the NHS Foundation Trust Board.

The Corporate Trustee effectively delegates the day-to-day operations of the Charity to a dedicated Charity Team reporting to the Head of Communications and to a dedicated finance team reporting to the Director of Finance.

In addition, the Charitable Funds Committee meets quarterly to:



Together, we care.



- Oversee the work of the Charity and Finance teams charged with the day-to-day operations of the charity
- Ensure that best practice is followed in the conduct of the Charity's business and that all legal and policy requirements are fulfilled.
- Review the performance and adherence to policy of the investment portfolio.
- Approve items of expenditure which exceed the limits delegated to fund-managers.
- Provide guidance and direction to the Corporate Trustee and fund-managers.

The Audit Committee is required to:

- Review the Annual Report and Accounts.
- Review the on-going work of internal audit during the year.
- Review the findings of the external audit.

Maintenance of the accounting records and general administration of the Charity are carried out by staff in the NHS Trust's Finance Directorate offices.

Individual fund advisors are delegated the responsibility for the use of designated funds within the limits set by NHS Trust's standing orders, standing financial instructions and scheme of delegation.

Fund-advisors are clinical directors and managers, medical consultants, heads of department, and ward sisters.

Objectives

Our aim:

The Corporate Trustee shall hold the charitable funds upon trust to apply the income, and using discretion insofar as may be permissible, the capital, for any charitable purpose or purposes relating to the National Health Service wholly or mainly for the services provided by County Durham and Darlington NHS Foundation Trust.



Together, we care.



Our Strategic Objectives

1. Enhance patient care and experience
2. Support our workforce to be the best they can and provide the best possible care
3. To be financially sustainable, responsive, and well governed that values and develops our staff, actively practicing the principles of equity, diversity, and inclusion

In addition, there are also funds that have a more specific purpose, either by legal restriction or trustee designation, for the benefit of patients within individual services or centres of care.

In essence, the Charity is concerned with enhancing the care and experience for patients and staff across both acute and community sectors in County Durham and Darlington. That includes the Trust's main hospitals in Durham, Darlington and Bishop Auckland, and a wide range of community hospitals and health centres.

It also includes the Trust's community services some of which is delivered within the homes of patients and nursing homes.



Together, we care.





Public Benefit

The Charity exists to support patient care and wellbeing through the services provided by County Durham and Darlington NHS Foundation Trust (CDDFT). The Trust is an ambitious organisation with a strategy called 'Our Patients Matter', which focuses on delivering the Trust's vision.

The NHS is operating within an increasingly challenging financial environment and therefore to support the Trust's ambitions, a more proactive approach to the Trust's Charity was adopted in 2018/19, and this has continued to develop and grow through the following years including 2024/25.

Engagement on developing a forward-looking five-year strategy began in 2022/23 and was finalised and ratified in 2023/24.

Our charitable activities focus on providing a public benefit by the advancement of health and the saving of lives within the whole population served by CDDFT. They seek to improve healthcare services and facilities above and beyond what is expected from the NHS and are achieved through the encouragement of charitable giving and effective management of the Charity and its grant-making activities.

The trustees confirm that they have referred to the guidance contained in the Charity Commission's general guidance on public benefit when reviewing the Charity's aims and objectives and in planning future activities and setting the grant making policy for the year.



Together, we care.





Fundraising, Donation and Grant Funding Highlights

The 2024/25 financial year has been a positive one for the CDDFT Charity, with exceptional efforts made through fundraising, donations, and grant funding. This section highlights the key achievements, reflecting the dedication and generosity of our supporters, staff, and local community.

From large-scale fundraising events to individual contributions, these efforts have enabled us to enhance patient care, invest in new equipment, and support critical services across County Durham and Darlington.

We are proud to share the significant impact that these initiatives have had on improving the lives of our patients and communities, here are just some of the highlights.



Together, we care.



Charity buys scanners to benefit patients



Our patients are benefitting from new portable bladder scanners that use ultrasound to instantly investigate a common bladder problem – in a community clinic or needs be from the patient's home.

These three new portable scanners, along with those we already have mean our team of nurses can see and assess patients quickly once a referral has been received – often from a GP or other health professional.

Without a scan, the only way to check if the patient's bladder is empty is to insert a catheter and see if any urine drains. As with any invasive procedure, this carries risks and can also be uncomfortable.

Portable scanners use ultrasound to instantly show whether or not the patient's bladder is empty. Patients are both amazed and delighted how quick and easy it is, often putting to rest any fears.

Festive Campervans Spread Christmas Cheer at University Hospital of North Durham's Children's Ward

In a magical display of Christmas spirit, a convoy of 22 campervans adorned with twinkling lights visited the children's ward at University Hospital of North Durham (UHND) in December to spread festive cheer to young patients and their families.

The heartwarming event organised by Durham Dubs and our Charity team brought smiles and joy to everyone who experienced the festive spectacle.

The campervans, each uniquely decorated with colourful lights, designs, and festive characters, created a dazzling scene outside the hospital.

Patients, families, and staff enjoyed the display, with some children able to leave the ward and step outside to see the lights up close.

This close relationship with Durham Dubs looks set to be an annual event.



Family Raises £1,000 for Special Care Baby Unit after Premature Birth



A grateful family has raised an incredible £1,000 for the Special Care Baby Unit (SCBU) at the University Hospital of North Durham, in honour of the outstanding care their premature baby received after being born weighing just 1lb 15oz.

Baby Jaxson was born prematurely at just 26 + 6 weeks, facing a challenging start to life.

The SCBU team provided round-the-clock specialist care, helping to support and stabilise the baby during those critical early weeks.

In appreciation for the lifesaving care provided, the family launched a fundraising effort to support the unit that helped their little one thrive. Thanks to the generosity of friends, family, and their community, they raised £1,000 to give back to the team.

"We'll never be able to fully express how thankful we are," said Nathan, Jaxson's dad.

"The doctors, nurses, and all the staff were incredible — they treated our baby like their own and supported us every step of the way. Raising this money is our way of saying thank you and helping other families who might one day walk the same road."

The funds will be used by CDDFT Charity to support enhancements to the SCBU, including comfort items for families, developmental care resources for babies, and wellbeing initiatives for staff.



Ultra-Marathon Runner Sue Humes

CDDFT Charity got behind our Sue!

Our Ward Manager for the Stroke Unit at University Hospital of North Durham took on The Kingdom of Northumberland Coastal Ultra Run on 9 March 2025.

Sue ran a massive 54km Ultra Trail Run which started near Bamburgh Castle and finished at Druridge Bay Country Park.

Sue raised vital funds for the Stroke Unit (Ward 2) in not just a personal challenge, but an opportunity to give back to the patients and families who rely on the exceptional care and support Sue and her team provide.

Every donation will go directly toward enhancing services, equipment, and research that help stroke survivors recover and rebuild their lives.

Communications, Media and Engagement

Growth in Social Media

Our social media presence continues to grow across multiple platforms, with significant increases in both reach and engagement. This expansion is helping us to connect with wider audiences, raise awareness of the charity's work, and support fundraising campaigns more effectively.

People-Focused Stories

We are prioritising people-centred storytelling, capturing the experiences of patients, staff, volunteers, and supporters. These stories are proving highly effective in demonstrating impact, inspiring donations, and building a stronger sense of community around the charity.

Press Coverage

We have seen increased media interest and positive press coverage around donations, fundraising events, and charity-led projects. We have also forged good relationships with Consett Magazine and Durham Magazine. Press releases have been well received and are supporting our efforts to raise the profile of CDDFT Charity across the region.



Together, we care.



Supporting the workforce

This year, CDDFT Charity continued to place a strong focus on supporting the Trust's workforce through a range of initiatives aimed at boosting staff morale and wellbeing.

One such initiative was the popular "12 Days of Christmas" prize draws, where staff members had the chance to win exciting prizes kindly donated by local businesses during the festive season.

This initiative, alongside other staff support activities, highlights the Charity's ongoing commitment to showing appreciation for the hard work and dedication of the Trust's employees, ensuring they feel valued and supported throughout the year.



Risk Management

The major risks to which the Charity is exposed have been identified and systems put in place in mitigation.

The major external risk to which the Charity is exposed is a sudden fall in the value of the investment portfolio, as occurred on more than one occasion since 2000. However, the Corporate Trustee invests over the longer term to ensure that the greatest returns are achieved.

Evidence of financial performance over any 20-year period in the last century is that some exposure to a wide range of equity-based investments will add value in comparison to a purely narrow-range, fixed-interest based portfolio.

To mitigate the exposure to risk in this area the Charity has adopted an investment policy that seeks to achieve a balance between capital growth and income generation by using a range of investment vehicles.



Together, we care.

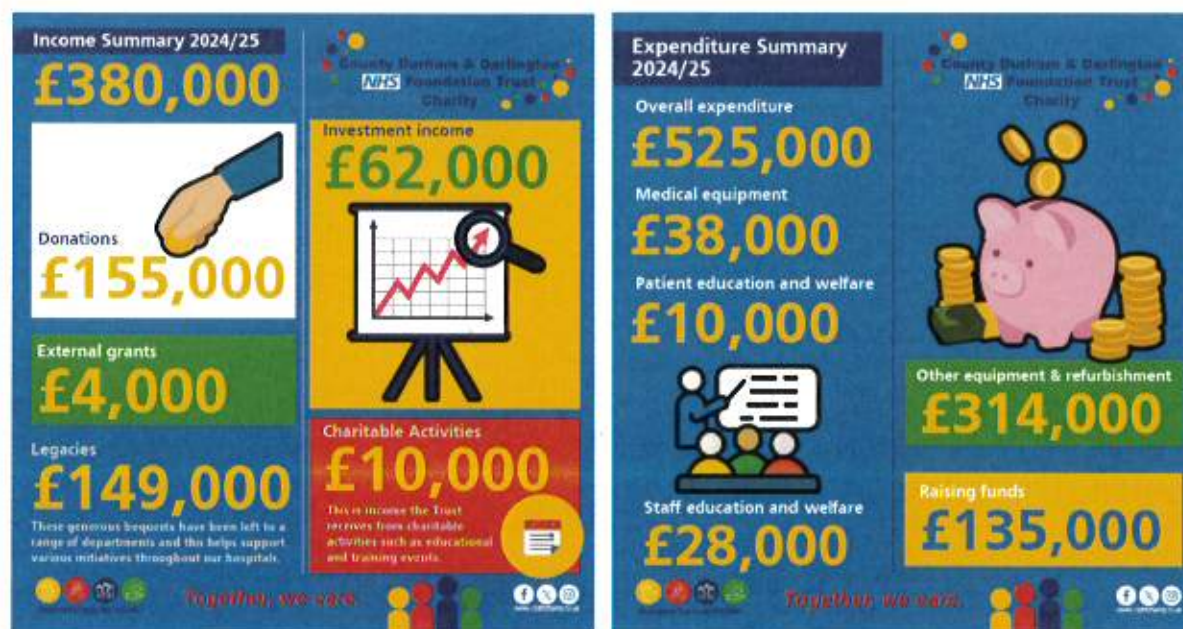


These typically comprise a wide range of UK Gilts and corporate bonds, UK and overseas investment and unit trusts, UK common investment funds and UK equities.

The UK equity investments are generally constituents of the FTSE 100 Index. There are no investments in organisations whose primary business is in tobacco or alcohol products.

The Charity also employs a professional investment management company to provide a specialist advisory investment service. The firm is authorised and regulated by the Financial Conduct Authority, whose remit was set by the Financial Services & Markets Act 2000 as amended by the Financial Services Act 2012.

With these controls in place over this area of risk, the Charity was able to continue supporting local NHS services in their drive to improve care and services to patients. Internal risk of misappropriation or misuse of funds is controlled through the adoption and use of the Trust constitution, standing financial instructions and financial procedure notes by staff working on charity matters. Audit One periodically audit the different control systems within the Charity using a risk-based approach'



New website

We are pleased to include the launch of the new CDDFT Charity website, designed to make supporting our cause easier than ever.

The refreshed site offers a user-friendly experience, allowing visitors to explore the Charity's impact, stay updated on our latest projects, and learn about upcoming fundraising events.

A key feature of the new website is the seamless **Direct Donation** functionality, which enables supporters to contribute with just a few clicks. Whether you want to make a one-off donation or set up regular giving, the process is quick, secure, and convenient.

Every donation, no matter the size, directly helps us improve patient care and enhance services across our hospitals and community settings.

Visit our website today to see the difference your generosity can make and join us in continuing to support the vital work of CDDFT.

The new website can be found at: www.cddftcharity@nhs.net



Together, we care.



Thank you for your continued support.
Together, we care.



Together, we care.



Charity Team

In January 2025, the Charity Team welcomed a new manager to the role. High on the agenda, was an appraisal of the operations and the governance set over the charity, to ensure that it was fit-for-purpose and that the CDDFT Charity operates with the highest standards of accountability, transparency, and accessibility. The charity went through a period of 'change' to arrive to a desired state where it had a modernised governance framework that not only meets all regulatory requirements but also makes it easier for staff, volunteers, and supporters to engage with the charity's work. Out of this review came several work-streams which in some cases required urgent attention and in others, a rethink of how we ensure the future viability of the Charity.

Key achievements this year include:

- **Updated Governance Structures** – streamlining decision-making processes, clarifying roles and responsibilities, and strengthening oversight by the Board of Trustees.
- **Modernised Policies and Procedures** – aligning with best practice standards across finance, fundraising, safeguarding, data protection, and volunteer management.
- **Accessibility Improvements** – ensuring policies are clearer, more user-friendly, and readily available in digital formats for staff and supporters.
- **Transparency and Accountability** – adopting a more open approach to sharing information, progress, and impact with stakeholders.
- **Future-Proofing** – building flexible systems that can adapt to new opportunities, technologies, and ways of working

Strategic Change

Previously, the charity had relied almost exclusively on generous donations from the local community, which ensured income was consistent and at a level where we could deliver the services and support for our patients and staff. However, due to recent economic instability, the charity has seen a decrease in community donations limiting our impact in providing support. Whilst we are extremely grateful for the continuing gifts from our supporters, we are now also working hard to engage with medium to large corporate organisations who can help our drive to provide transformational care.

Corporate Partners

A review of the existing list of Corporate Partners showed that the relationships were not as strong as they could be, and engagement had waned in the previous years. A significant workstream was to identify those organisations we could re-engage with



Together, we care.



and targeting pathways to facilitate our networking activities. Relationship management to retain those partners

Plans to engage with Corporate Partners:

- **NECC** - Renewing membership of the North East Chambers of Commerce (NECC). Greater presence at events and meetings.
- **Fundraisers** - Building fundraisers for specific equipment, using them as a draw for partnerships.
- **Open Days** - Open Days with invites for Corporate Partners to demonstrate our capabilities and service as a Trust.

Currently, we have retained 4 of our Corporate Partners and using the Open Days to attract more to join us.

Events and Networking

A full evaluation of our event activity was conducted and the viability of hosting and managing events. Given the small size of the team and the man-hours required to plan, organise, and manage events, it was decided that the more sustainable route would be to invite fundraisers to join in on already planned events as opposed to us hosting them. This proved effective with the Great North Run 2025, which was organised solely by Charities Together, leaving the team to concentrate on managing the runners.

Away from the NECC activities, the team continued with networking and community activities, holding an Afternoon Tea event and the Easter Egg run. We also increased our presence at business network meetings, raising awareness of the charity and the Trust.

**County Durham & Darlington NHS Foundation Trust
Charity**

Charity Registration Number: 1053467

Unaudited Annual Accounts 2024/25

Foreword

These accounts have been prepared by the Corporate Trustee in accordance with the Charities Act 2011 and the Charities Statement of Recommended Practice (SORP) FRS102.

Statutory background

The County Durham and Darlington NHS Foundation Trust charitable funds held on trust are registered with the Charity Commission and incorporate funds that support the NHS services that we provide in County Durham & Darlington, whether in homes or health centres, or in our hospitals in Durham City, Darlington, Bishop Auckland, Shotley Bridge, Chester-le-Street, Barnard Castle, Sedgefield and Stanhope.

Main purpose of the funds held on trust

The main purpose of the charitable funds held on trust is to apply income for any charitable purpose relating to the National Health Service wholly or mainly for the services provided by the the County Durham and Darlington NHS Foundation Trust.

County Durham and Darlington NHS Foundation Trust Charity 2024/25

Statement of Trustees' responsibilities in respect of the Trustees' annual report and the financial statements

Under the trust deed of the charity and charity law, the trustees are responsible for preparing the Trustees' Annual Report and the financial statements in accordance with applicable law and regulations. The trustees have elected to prepare the financial statements in accordance with UK Accounting Standards, including FRS 102 *The Financial Reporting Standard applicable in the UK and Republic of Ireland*.

The financial statements are required by law to give a true and fair view of the state of affairs of the charity and of the excess of expenditure over income for that period.


In preparing these financial statements, generally accepted accounting practice entails that the trustees:

- select suitable accounting policies and then apply them consistently;
- make judgements and estimates that are reasonable and prudent;
- state whether applicable UK Accounting Standards and the Statement of Recommended Practice have been followed, subject to any material departures disclosed and explained in the financial statements;
- state whether the financial statements comply with the trust deed, subject to any material departures disclosed and explained in the financial statements;
- assess the Charity's ability to continue as a going concern, disclosing, as applicable matters related to going concern; and
- use the going concern basis of accounting unless they either intend to liquidate the charity or to cease operations, or have no realistic alternative but to do so.

The trustees are required to act in accordance with the trust deed of the charity, within the framework of trust law. They are responsible for keeping proper accounting records, sufficient to disclose at any time, with reasonable accuracy, the financial position of the charity at that time, and to enable the trustees to ensure that, where any statements of accounts are prepared by them under section 132(1) of the Charities Act 2011, those statements of accounts comply with the requirements of regulations under that provision. They are responsible for such internal control as they determine is necessary to enable the preparation of financial statements that are free from material misstatement, whether due to fraud or error, and have general responsibility for taking such steps as are reasonably open to them to safeguard the assets of the charity and to prevent and detect fraud and other irregularities.

The trustees are responsible for the maintenance and integrity of the financial and other information included on the charity's website. Legislation in the UK governing the preparation and dissemination of financial statements may differ from legislation in other jurisdictions.

By Order of the Trustees


Chairman..... Date 6.1.26.....

Trustee ..... Date 23/12/25.....

Independent Examiner's Report to the Trustee of County Durham and Darlington NHS Foundation Trust Charitable Fund

I report to the trustees on my examination of the financial statements of County Durham and Darlington NHS Foundation Trust Charity (the charity) for the year ended 31 March 2025.

Responsibilities and basis of report

As the trustees of the charity you are responsible for the preparation of the financial statements in accordance with the requirements of the Charities Act 2011.

I report in respect of my examination of the charity's financial statements carried out under section 145 of the Charities Act 2011. In carrying out my examination I have followed the Directions given by the Charity Commission under section 145(5)(b) of the Charities Act 2011.

Independent examiner's statement

Since the charity's gross income exceeded £250,000, the independent examiner must be a member of a body listed in section 145 of the Charities Act 2011. I confirm that I am qualified to undertake the examination because I am a member of Association of Chartered Certified Accountants, which is one of the listed bodies.

I have completed my examination. I confirm that no matters have come to my attention in connection with the examination giving me cause to believe that in any material respect:

- 1 accounting records were not kept in respect of the charity as required by section 130 of the Charities Act 2011.
- 2 the financial statements do not accord with those records; or
- 3 the financial statements do not comply with the applicable requirements concerning the form and content of financial statements set out in the Charities (Accounts and Reports) Regulations 2008 other than any requirement that the financial statements give a true and fair view, which is not a matter considered as part of an independent examination.

I have no concerns and have come across no other matters in connection with the examination to which attention should be drawn in this report in order to enable a proper understanding of the financial statements to be reached.


Nicholas Cunningham FCCA
Robson Laidler Accountants Limited
Fernwood House
Fernwood Road
Jesmond
Newcastle upon Tyne
Tyne and Wear
NE2 1TJ
England

Dated: 17-1-2026.....

County Durham and Darlington NHS Foundation Trust Charity 2024/25

Statement of Financial Activities for the year ended 31 March 2025

	Note	Unrestricted Funds £000	Restricted Funds £000	Endowment Funds £000	2024/25 Total Funds £000	2023/24 Total Funds £000
Income and endowments from:						
Donations and legacies	4	235	73	-	308	227
Income from charitable activities	5	10	-	-	10	25
Investment income	6	41	21	-	62	68
External Income		-	-	-	-	26
Total income		286	94	-	380	346
Expenditure on:						
Raising funds	8a	(92)	(43)	-	(135)	(165)
Charitable activities:						
Medical equipment		(29)	(9)	-	(38)	(78)
Medical research		-	-	-	-	-
Staff education and welfare		(21)	(7)	-	(28)	(13)
Patient education and welfare		(8)	(2)	-	(10)	(16)
Other equipment and refurbishment		(239)	(75)	-	(314)	(262)
Total expenditure on charitable activities	8b	(297)	(93)	-	(390)	(389)
Total expenditure		(389)	(136)	-	(525)	(554)
Net (expenditure)/income before (losses)/gains on investment assets		(103)	(42)	-	(145)	(208)
Net (losses)/gains on investments		13	26	-	39	230
Net (expenditure)/income		(90)	(16)	-	(106)	22
Fund balances brought forward at 31 March 2024		1,657	705	-	2,362	2,341
Transfers between funds	21	-	-	-	-	0
Fund balances carried forward at 31 March 2025		1,567	689	-	2,256	2,362

The notes at pages 6 to 18 form part of these Accounts.

County Durham and Darlington NHS Foundation Trust Charity 2024/25

Balance Sheet as at 31 March 2025

	Notes	Unrestricted Funds £000	Restricted Funds £000	Endowment Funds £000	Total at 31 March 2025 £000	Total at 31 March 2024 £000
Fixed Assets						
Investments	16	1,663	636	-	2,299	2,267
Total Fixed Assets		1,663	636	-	2,299	2,267
Current Assets						
Debtors	18	-	-	-	-	1
Cash and cash equivalents	19	55	61	-	116	225
Total Current Assets		55	61	-	116	226
Liabilities						
Creditors falling due within one year	20	(151)	(8)	-	(159)	(132)
Net current assets/(liabilities)		(96)	53	-	(43)	94
Total Net Assets		1,567	689	-	2,256	2,362
Funds of the Charity	21					
Endowment funds		-	-	-	-	-
Restricted income funds		-	689	-	689	705
Unrestricted income funds		1,567	-	-	1,567	1,657
Total Funds		1,567	689	-	2,256	2,362

The notes at pages 6 to 18 form part of these Accounts.

Signed



Date:

6.1.26

County Durham and Darlington NHS Foundation Trust Charity 2024/25

Statement of Cash Flow for the year ended 31 March 2025	31 March 2025	31 March 2024
	£000	£000
Net operating income / (expenditure)	(106)	22
Adjustment for non-cash transactions -unrealised gains on investments	(39)	(229)
Adjustment for non-cash donations (physical assets) and other non-cash transactions	0	0
(Increase)/decrease in receivables	1	0
Increase/(decrease) in payables	28	(186)
Other movements in working capital	0	0
Other adjustments for non-operating cash flows	0	0
Other operating cash flows	0	0
Net cash generating from / (used in) operations	(116)	(393)
Net cash generating from / (used in) investing activities	60	500
Purchase of investments	(314)	(336)
Proceeds from disposal of investments	261	286
Net cash generating from / (used in) financing activities	0	0
Net increase / (decrease) in cash	(109)	57
Cash at 1 April	225	168
Cash and cash equivalents at start of period of new FT	0	0
Cash and cash equivalents transferred under normal absorption accounting	0	0
Cash transferred to NHS foundation trust upon authorisation as FT	0	0
Cash at 31 March	116	225

County Durham and Darlington NHS Foundation Trust Charity 2024/25

Notes to the Accounts

1 Accounting Policies

(a) Basis of preparation

The financial statements have been prepared under the historical cost convention, modified to include the revaluation of investments to market value, in accordance with the Charities Act 2011 and with the guidelines set out in the Charities Statement of Recommended Practice: (SORP) FRS102.

The Trustees consider that there are no material uncertainties about the Charity's ability to continue as a going concern. There are no material uncertainties affecting the current year's Accounts.

The key risks to the Charity are a fall in income from donations or investment income, or loss in value of its investment portfolio. However, the Charity is grant-giving rather than service-providing so there is no material risk to beneficiaries as a whole.

The Trustees have arrangements in place to mitigate the risks through its investment policy.

(b) Funds structure

Funds are classified as follows:

Endowment funds are held on trust to be retained by the Charity as capital.

Where the Corporate Trustee is required to maintain the whole of the fund it is known as permanent endowment. Income to these funds is generally not subject to the same restriction as the original fund and therefore forms part of the unrestricted funds. At 31 March 2025 there were no endowment funds within the Charity.

Restricted funds can only be applied for particular purposes within the Charity's objects and have to be accounted for separately. Income to such a fund is generally subject to the same restriction as the original fund. At 31 March 2025 there were 17 restricted funds.

Unrestricted funds are available to apply for any general charitable purpose of the Charity.

Where the Corporate Trustee earmarks unrestricted funds for particular purposes then such funds are described as 'designated' funds but remain part of the Charity's unrestricted funds for accounting purposes. At 31 March 2025 there were 90 such funds, mainly designated to particular service or ward purposes.

(c) Income

Income is recognised once the Charity has entitlement to the resources, it is probable (more likely than not) that the resources will be received and the monetary value of income can be measured with sufficient reliability.

Conditions must be met before the income is recognised as the entitlement condition will not be satisfied until that point. Where terms or conditions have not been met or uncertainty exists as to whether they can be met then the relevant income is not recognised in the year but deferred and shown on the Balance Sheet as deferred income.

County Durham and Darlington NHS Foundation Trust Charity 2024/25

(d) Income from legacies

Legacies are accounted for as income either upon receipt or where the receipt of the legacy is probable.

Receipt is probable when:

- Confirmation has been received from the representatives of the estate(s) that probate has been granted
- The executors have established that there are sufficient assets in the estate to pay the legacy and
- All conditions attached to the legacy have been fulfilled or are within the Charity's control.

If there is uncertainty as to the amount of the legacy and it cannot be reliably estimated then the legacy is shown as a contingent asset until all of the conditions for income recognition are met.

(e) Expenditure and irrecoverable VAT

All expenditure is accounted for on an accruals basis and has been classified under headings that aggregate all costs related to each category of expense shown in the Statement of Financial Activities.

Expenditure is recognised when the following criteria are met:

- There is a present legal or constructive obligation resulting from a past event
- It is more likely than not that a transfer of benefits (usually a cash payment) will be required in settlement, and
- The amount of the obligation can be measured or estimated reliably.

Irrecoverable VAT is charged against the category of resources expended for which it was incurred.

(f) Recognition of expenditure and associated liabilities as a result of grant

Grants payable are payments made to linked, related party or third party NHS bodies and non NHS bodies, in furtherance of the charitable objectives of the funds held on trust, primarily relief of those who are sick.

Grant payments are recognised as expenditure when the conditions for their payment have been met or where there is a constructive obligation to make a payment.

A constructive obligation arises when:

- We have communicated our intention to award a grant to a recipient who then has a reasonable expectation that they will receive a grant
- We have made a public announcement about a commitment which is specific enough for the recipient to have a reasonable expectation that they will receive a grant and
- There is an established pattern of practice which indicates to the recipient that we will honour our commitment.

The Trustees have control over the amount and timing of grant payments and consequently where approval has been given by the Trustees and any of the above criteria have been met then a liability is recognised. Grants are not usually awarded with conditions attached. However, when they are then those conditions have to be met before the liability is recognised.

Where an intention has not been communicated, then no expenditure is recognised but an appropriate designation is made in the appropriate fund. If a grant has been offered but there is uncertainty as to whether it will be accepted or whether conditions will be met then no liability is recognised but a contingent liability is disclosed.

County Durham and Darlington NHS Foundation Trust Charity 2024/25

(g) Allocation of support costs

Support costs are those costs which do not relate directly to a single activity. These include some staff costs, costs of administration, internal and external audit costs and IT support. Support costs have been apportioned between fundraising costs and charitable activities on an appropriate basis.

The analysis of support costs and the bases of apportionment applied are shown in note 12.

(h) Fundraising costs

The costs of generating funds are those costs attributable to generating income for the Charity, other than those costs incurred in undertaking charitable activities or the costs incurred in undertaking trading activities in furtherance of the Charity's objects. The costs of generating funds represent fundraising costs together with investment management fees. Fundraising costs include expenses for fundraising activities and a charge paid to a related party, the County Durham & Darlington NHS FT, to cover the costs of salaries of the staff who are involved in the collection of funds.

(i) Charitable activities

Costs of charitable activities comprise all costs incurred in the pursuit of the charitable objects of the Charity. These costs, where not wholly attributable, are apportioned between the categories of charitable expenditure in addition to the direct costs. The total costs of each category of charitable expenditure include an apportionment of support costs as shown in note 12.

(j) Investment fixed assets

Investments are a form of basic financial instrument. Fixed asset investments are initially recognised at their transaction value and are subsequently measured at their fair value (market value) as at the balance sheet date. The Statement of Financial Activities includes the net gains and losses arising on revaluation and disposals throughout the year. Quoted stocks and shares are included in the Balance Sheet at the current market value quoted by the investment analyst, excluding dividend. Other investments are included at the Trustees' best estimate of market value.

The main form of financial risk faced by the Charity is that of volatility in equity markets and investment markets due to wider economic conditions, the attitude of investors to investment risk, and changes in sentiment concerning equities and within particular sectors or sub sectors. Further information on the Charity's investments can be found in note 16.

(k) Debtors

Debtors are amounts owed to the Charity. They are measured on the basis of their recoverable amount.

(l) Cash and cash equivalents

Cash at bank and in hand is held to meet the day to day running costs of the Charity as they fall due. Cash equivalents are short term, highly liquid investments, usually in 90 day notice interest bearing savings accounts.

(m) Creditors

Creditors are amounts owed by the Charity. They are measured at the amount that the Charity expects to have to pay to settle the debt. Amounts which are owed in more than a year are shown as long term creditors.

County Durham and Darlington NHS Foundation Trust Charity 2024/25

(n) Realised gains and losses

All gains and losses are taken to the Statement of Financial Activities as they arise. Realised gains and losses on investments are calculated as the difference between sales proceeds and opening carrying value (purchase date if later).

(o) Pensions

The Charity has no employees, but utilises staff employed by the linked NHS Foundation Trust to run its business on behalf of the Corporate Trustee. Therefore, there are no pension liabilities arising.

County Durham and Darlington NHS Foundation Trust Charity 2024/25

2 Prior year comparatives by type of fund

The primary statements provide prior year comparatives in total; this note provides prior period comparatives for the Statement of Financial Activities and the Balance Sheet for each of the types of funds that the Charity manages.

2a Unrestricted funds - Statement of Financial Activities for the year ended 31 March 2025

	2025	2024
	£000	£000
Income and endowments from:		
Donations and legacies	235	191
Charitable activities	10	25
Investment income	41	45
Total income	286	261
Expenditure on:		
Raising funds	(92)	(110)
Charitable activities	(297)	(296)
Total expenditure	(389)	(406)
Net (losses)/gains	13	200
Net (expenditure)/income	(90)	55
Transfers between funds	-	-
Net movement in funds	(90)	55
Reconciliation of funds		
Total funds brought forward	1,657	1,602
Total funds carried forward	1,567	1,657

Unrestricted funds - Balance Sheet as at 31 March 2025

	2025	2024
	£000	£000
Fixed Assets:		
Investments	1,663	1,605
Total Fixed Assets	1,663	1,605
Current Assets:		
Debtors	-	1
Cash and cash equivalents	55	136
Total Current Assets	55	137
Liabilities:		
Creditors falling due within one year	(151)	(85)
Net Current (Liabilities)/Assets	(96)	52
Total Assets less Current Liabilities	1,567	1,657
Creditors falling due after more than one year	-	-
Total Net Assets for unrestricted funds	1,567	1,657
Total unrestricted funds	1,567	1,657

County Durham and Darlington NHS Foundation Trust Charity 2024/25

2b Restricted funds - Statement of Financial Activities for the year ended 31 March 2025

	2025	2024
	£000	£000
Income and endowments from:		
Donations and legacies	73	36
Charitable activities	-	-
Investment income	21	23
External Income	-	26
Total income	94	85
Expenditure on:		
Raising funds	(43)	(55)
Charitable activities	(93)	(93)
Total expenditure	(136)	(148)
Net (losses)/gains	26	30
Net (expenditure)/income	(16)	(33)
Transfers between funds	-	-
Net movement in funds	(16)	(33)
Reconciliation of funds		
Total funds brought forward	705	739
Total funds carried forward	689	705

Restricted funds - Balance Sheet as at 31 March 2025

	2025	2024
	£000	£000
Fixed Assets:		
Investments	636	663
Total Fixed Assets	636	663
Current Assets:		
Debtors	-	-
Cash and cash equivalents	61	89
Total Current Assets	61	89
Liabilities:		
Creditors falling due within one year	(8)	(47)
Net Current (Liabilities)/Assets	53	42
Total Assets less Current Liabilities	689	705
Creditors falling due after more than one year	-	-
Total Net Assets for restricted funds	689	705
Total restricted funds	689	705

County Durham and Darlington NHS Foundation Trust Charity 2024/25

2c Endowment funds - Statement of Financial Activities for the year ended 31 March 2025

	2025 £000	2024 £000
Income and endowments from:		
Donations and legacies	-	-
Charitable activities	-	-
Investment income	-	-
Total income	-	-
Expenditure on:		
Raising funds	-	-
Charitable activities	-	-
Total expenditure	-	-
Net (losses)/gains	-	-
Net (expenditure)/income	-	-
Transfers between funds	-	-
Net movement in funds	-	-
Reconciliation of funds		
Total funds brought forward	-	-
Total funds carried forward	-	-

Endowment funds - Balance Sheet as at 31 March 2024

	2025 £000	2024 £000
Fixed Assets:		
Investments	-	-
Total Fixed Assets	-	-
Current Assets:		
Debtors	-	-
Cash and cash equivalents	-	-
Total Current Assets	-	-
Liabilities:		
Creditors falling due within one year	-	-
Net Current (Liabilities)/Assets	-	-
Total Assets less Current Liabilities	-	-
Creditors falling due after more than one year	-	-
Total Net Assets for endowment funds	-	-
Total endowment funds	-	-

County Durham and Darlington NHS Foundation Trust Charity 2024/25

3 Related party transactions

County Durham and Darlington NHS Foundation Trust is a related party by virtue of its role as corporate trustee of the Charity. As part of the Accounting and Reporting by Charities: Statement of Recommended Practice (SORP 2015), the Charity is viewed as a subsidiary for accounting purposes as its activities are controlled by the Corporate Trustee.

The SORP requires a number of disclosures in the Accounts as follows:

The principal office of the Corporate Trustee is:

Darlington Memorial Hospital
Trust Headquarters
Hollyhurst Road
Darlington
DL3 6HX

A copy of the consolidated accounts of the Corporate Trustee can be obtained by contacting the Director of Finance at this address.

All Charity expenditure is incurred by the Corporate Trustee and recharged to the Charity on a timely basis. Total expenditure for 2024/25 amounted to £562k of which £146k remained outstanding at 31 March 2025. There were no amounts written-off during the year.

4 Income from donations and legacies

	Unrestricted Funds £000	Restricted Funds £000	Total 2025 £000	Total 2024 £000
Donations from individuals	129	2	131	114
Corporate donations	23	1	24	56
Legacies	79	70	149	10
Grants	4	-	4	35
Recharge income	-	-	-	12
Total voluntary income	235	73	308	227

5 Income from charitable activities

	Unrestricted Funds £000	Restricted Funds £000	Total 2025 £000	Total 2024 £000
Education and training events	-	-	-	7
Other events	10	-	10	18
Total income from charitable activities	10	-	10	25

County Durham and Darlington NHS Foundation Trust Charity 2024/25

6 Investment income

	2025	2024
Earned from:	£000	£000
UK Equities	14	19
UK Bonds	12	10
Overseas Equities	19	28
Overseas Bonds*	7	4
Property*	2	2
Alternatives*	5	6
Cash*	3	1
Total investment income	62	68

7 Role of volunteers

The Charity relies on fund advisors, acting in a voluntary capacity, to manage the individual charitable funds. The advisors are typically employees of the corporate trustee, usually senior clinical and management staff, who are well placed to decide within the scheme of delegation how funds can best be directed to improving services, facilities and amenities for patients.

8

a. Analysis of expenditure on raising funds

	Unrestricted Funds £000	Restricted Funds £000	Total 2025 £000	Total 2024 £000
Investment management	7	2	9	15
Charity development costs	-	-	-	-
Other support costs	85	41	126	150
Total expenditure on raising funds	92	43	135	165

b. Analysis of expenditure on other areas

	Unrestricted Funds £000	Restricted Funds £000	Total 2025 £000	Total 2024 £000
Charitable Activities	209	37	246	240
Furtherance of Charity Objectives	65	33	98	88
Other Expenditure	23	22	45	23
Third Party Expenditure	-	1	1	38
Total expenditure on other areas	297	93	390	389

9 Analysis of charitable expenditure

The Charity did not undertake any direct charitable activities during the year, but awarded grants to County Durham & Darlington NHS Foundation Trust to enable it to improve its services and provide additional amenities for patients.

Expenditure over activity headings is as follows:

	Grant Funded Activity £000	Support Costs £000	2025 Total £000	2024 Total £000
Medical equipment	28	10	38	78
Medical research	-	-	0	0
Staff education and welfare	21	7	28	14
Patient education and welfare	7	3	10	15
Other equipment and refurbishment	235	79	314	282
Total charitable expenditure	291	99	390	389

County Durham and Darlington NHS Foundation Trust Charity 2024/25

10 Analysis of grants

The total cost of grant-making, including support costs, is disclosed in the Statement of Financial Activities. The actual disbursement, excluding support costs, is disclosed in note 9.

All grants are made through the County Durham & Darlington NHS Foundation Trust to enhance the care of NHS patients in furtherance of our charitable aims.

The Corporate Trustee operates a scheme of delegation under which fund advisors administer the day-to-day activities in accordance with established standing orders and financial instructions. Spending decisions made under the scheme of delegation represent both ongoing and one-off activities and it is not possible to segment these activities into discrete individual grant awards. Individual grants are not approved by the corporate trustee, rather individual fund advisors initiate expenditure based on the approved charitable purposes of each fund.

Name of recipient:	Total paid 2025 £000	Total paid 2024 £000
County Durham & Darlington NHS Foundation Trust	292	217
Total grants	292	217

11 Commitments

The following commitments are not included in the Statement of Financial Activities as there is no legal or constructive obligation in place at the end of the financial year. They represent commitments agreed by the Charitable Funds Committee during the financial year.

The Charity awards a number of grants each year, most of which are paid out in the same financial year.

The Charity does not generally agree funding over a period longer than 12 months, so all commitments at 31 March 2025 are expected to be settled during the year.

As there is control over the award and timing of grants there is little uncertainty around these payments.

	2025 £000	2024 £000
Commitments outstanding at 1 April	49	23
Commitments settled during the year	(49)	(23)
New commitments arising during the year	28	49
Total Commitments outstanding at 31 March	28	49

Although the Purchase Orders were placed during 2024/25, the goods and services will be received during the following year 2025/26.

12 Allocation of support costs and overheads

Support and overhead costs are allocated between fundraising activities and charitable activities. Governance costs are those support costs which relate to the strategic and day to day management.

The bases of allocation used are as follows:

- Time: based on the estimated cost of staff time spent on Charity matters
- Expenditure: based on actual costs, apportioned across headings based on time

		Raising Funds £000	Charitable Activities £000	2025 Total £000	2024 Total £000
Internal audit	Expenditure	-	-	-	0
Independent Examiner	Expenditure	-	3	3	2
Subscriptions	Expenditure	-	-	-	0
Staff support	Time	-	15	15	14
Staff training	Time	-	-	-	0
Total governance costs		-	18	18	16
Events expenditure	Expenditure	-	-	-	0
Other expenditure	Expenditure	19	(8)	11	17
Staff support	Time	115	89	204	220
Total support costs and overheads		134	99	233	253

County Durham and Darlington NHS Foundation Trust Charity 2024/25

12 Allocation of support costs and overheads (continued)

Support costs have been apportioned across funds on the basis of average fund balances, as follows:

	Unrestricted Funds £000	Restricted Funds £000	Total 2025 £000	Total 2024 £000
Investment management	7	2	9	15
Support costs	151	73	224	238
Total support costs and overheads	158	75	233	253

13 Trustees' remuneration, benefits and expenses

No member of the Trust Board received reimbursement during the year for their duties in relation to the Charity.

No member of the Trust Board received remuneration from the Charity during the year.

The Trust Board is remunerated by County Durham and Darlington NHS Foundation Trust for their role as Executive and Non-Executive Directors of the Trust.

14 Analysis of staff costs and remuneration of key management personnel

The Charity does not directly employ any staff, but draws on the support of staff employed by the Corporate Trustee. All staff are remunerated by County Durham and Darlington NHS Foundation Trust.

Key personnel such as the Charity Development Manager are recharged from the Trust to the Charity.

15 Independent Examination

The Independent Examiners remuneration of £3,000 related solely to work on the 2024/25 Annual Accounts

16

a. Fixed Asset investments

Movement in Fixed Asset Investments	2025 £000	2024 £000
Market value at 1 April	2,267	2,488
Add: additions to investment at cost	314	336
Less: disposal proceeds	(321)	(723)
Less: movement in investment deposit account balances	(2)	(55)
Add / less: realised investment gain/loss	10	30
Add / less: unrealised gains on revaluation	29	199
Less: other adjustments	2	(8)
Market value at 31 March	2,299	2,267
 Historic cost at 31 March	 1,863	 1,788

b. Investment portfolio content

	2025 £000	2024 £000
UK Bonds*	122	119
UK Gilts	115	120
UK Equities	391	390
Overseas Equities	1,221	1,162
Property	58	59
Alternatives	159	182
Overseas Bonds	148	148
	2,214	2,181
 Cash held as part of portfolio	 85	 86
Total investments	2,299	2,267

Individual holdings are considered to be material and require disclosure if they represent more than 5% of the fair value of the portfolio at the Balance Sheet date.

At 31 March 2025, the following investments meet this criterion:

	2025 £000	2024 £000
Vanguard Funds PLC S & P 500 ETF	224	217
Aviva Investors US Equity		
ISHARES CORE S&P 500	238	291
Blackrock Fund Managers Ltd Continental European	129	126
Fidelity UCITS ICAV US	126	-
Total investments representing more than 5% of the portfolio	717	634

County Durham and Darlington NHS Foundation Trust Charity 2024/25

16 Fixed asset investments (continued)

All investments are carried at their fair value, as advised by the Charity's appointed investment advisor, RBC Brewin Dolphin.

The main risk relating to investments still lies in the combination of volatility in financial valuations and returns. The valuation of investment for 2024/25 realised a 2.7% yield against income. Portfolio net performance over a rolling 3 year period was 11% against 8%, although there has been a fall in the current year's performance impacted by inflation and cost of living, which includes international conflicts.

The Charity manages these investment risks by taking professional advice from qualified, regulated, investment advisors, who manage the portfolio within the parameters of an agreed investment policy.

17 Transfers between charitable funds

During 2024/25 there was a transfer to the Clinical Support Services (CSS) Fund of £5,129; £645.80 was transferred from the Gum Unit and £4,483.20 from the Radiology fund. The CSS, Gum Unit and Radiology funds are all unrestricted funds. The transfer was done, to streamline funds, the Gum Unit and Radiology funds were closed and moved into the main CSS fund.

18 Analysis of debtors

	Unrestricted Funds	Restricted Funds	Total 2025	Total 2024
Amounts falling due within one year:	£000	£000	£000	£000
Accrued income	-	-	-	1
Prepayments	-	-	-	-
Total debtors	-	-	-	1

19 Cash at bank and in hand

	Unrestricted Funds	Restricted Funds	Total 2025	Total 2024
	£000	£000	£000	£000
GBS Bank Account	55	61	116	225
Total cash at bank and in hand	55	61	116	225

20 Analysis of creditors

	Unrestricted Funds	Restricted Funds	Total 2025	Total 2024
Amounts falling due within one year:	£000	£000	£000	£000
Accruals for grants due to NHS bodies	151	8	159	132
Other accruals	-	-	-	-
Total creditors	151	8	159	132

Accruals for grants due to NHS bodies represent grants due to the County Durham and Darlington NHS FT for costs incurred by the Trust on behalf of the Charity in furtherance of its objects.

County Durham and Darlington NHS Foundation Trust Charity 2024/25

21 Analysis of charitable funds

a) Endowment funds

	Balance 31 March 2024 £000	Incoming Resources £000	Resources Expended £000	Transfers £000	Gains and Losses £000	Balance 31 March 2025 £000
Total endowment funds	-	-	-	-	-	0

There are currently no endowment funds

b) Restricted funds

	Balance 31 March 2024 £000	Incoming Resources £000	Resources Expended £000	Transfers £000	Gains and Losses £000	Balance 31 March 2025 £000
UHND Maternity Bereavement Unit	28	1	(3)	-	1	27
Surgical Oncology - UHND	5	0	(1)	-	0	4
TIC - Mental Health Projects	2	-	(1)	-	-	1
Stroke Rehab	1	0	(0)	-	0	1
Chemotherapy Extension Appeal	281	12	(42)	-	12	263
Paediatric Legacy Fund	2	0	(0)	-	0	2
CSS MALTA LEGACY FUND	54	2	(6)	-	1	51
Cancer Services Fund	4	0	(0)	-	0	4
Cancer Services Fund - Jean Blendall	0	70	(21)	-	-	49
Cardiac Research Fund - Legacy Sub Fund 1	25	1	(3)	-	1	24
Cardiac Research Fund - Legacy Sub Fund 2	60	2	(7)	-	3	58
Ophthalmology Nurses Fund - SUB FUND 1	8	0	(1)	-	0	7
Ophthalmology Nurses Fund - SUB FUND 2	46	1	(5)	-	2	44
Diabetes Fund	36	1	(4)	-	2	35
Covid-19	134	4	(26)	-	3	115
General fund - CIOF Charity development grant	19	-	(15)	-	-	4
Malla Legacy		0	(1)	-	1	0
Total restricted funds	705	94	(136)	-	26	689

The restricted funds are made up of legacies received over a number of years.

It also includes income received towards appeals plus and any grants received with specific restrictions on their expenditure.

c) Unrestricted funds

Unrestricted funds	Balance 31 March 2024	Incoming Resources	Resources Expended	Transfers	Gains & Losses	Balance 31 March 2025
Designated funds:	£000	£000	£000	£000	£000	£000
Community Fund	196	46	(68)	0	8	182
CSS Fund	108	8	(14)	5	5	112
ITU Fund	103	45	(25)	0	4	127
Mara Unit	65	41	(35)	0	3	74
Medical Education Trust Fund	63	2	(30)	0	2	37
Palliative Care Fund	47	2	(19)	0	1	31
Diabetes Fund	40	1	(8)	0	2	35
Paediatric Diabetic	39	1	(8)	0	2	34
Cardiac Investigations	34	8	(6)	0	2	38
Paediatric (Treetops)	29	5	(5)	0	1	30
	724	159	(218)	5	30	700
Designated funds:						
Other (90 funds)	453	46	(89)	(5)	18	423
Non-designated funds:						
Unrealised Investments Gains/Losses	289	-	-	-	(42)	247
CDDFT General Fund	191	81	(82)	-	7	197
	480	81	(82)	-	(35)	444
Total unrestricted funds	1,657	286	(389)	-	13	1,567

The threshold for reporting material unrestricted funds is set by the Trustee as a balance of £50,000 or above.

The above individually analyses the largest 10 fund balances within unrestricted funds.

The purposes of the unrestricted funds are to support any charitable purpose relating to the NHS, mainly those NHS services provided by the host NHS Foundation Trust.

The Unrealised Investment Gains/Losses fund comprises the unrealised investment gains due to unrestricted funds. They are not being allocated across all unrestricted funds but held in a central fund to mitigate against the risk of future losses.

Total for restricted & unrestricted funds as above	2,362	380	(525)	-	39	2,256
---	--------------	------------	--------------	----------	-----------	--------------

