

**Full Life Church & Christian Centre**

**Report and Financial Statements**

**For the year ended 31 December 2020**

**Registered Charity Number: 1052600**

**Full Life Church & Christian Centre**

**Contents of the Financial Statements**  
**For the year ended 31 December 2020**

	Page
Company Information	1
Trustees' Annual Report	2 - 6
Independent Examiners Report	7
Statement of Financial Activities	8
Balance Sheet	9
Notes to Financial Statements	10 - 16

**Full Life Church & Christian Centre**

**Company Information**

**For the year ended 31 December 2020**

**REGISTERED OFFICE:**

Full Life Church  
Maltby  
Rotherham  
South Yorkshire  
S66 8LF

**TRUSTEES:**

P. Norris - Chair  
K. Foster  
P. Wilson - Appointed 01/01/2021

**INDEPENDENT EXAMINER:**

Jon Lister FCCA  
Enterprise Chartered Certified Accountants  
8 Castlegate  
Tickhill  
Doncaster  
DN11 9QU

**BANKERS:**

Natwest Bank Plc  
Bawtry Road  
Wickersley  
Rotherham  
S60 0JY

## **Full Life Church & Christian Centre**

### **Trustees' Annual Report**

#### **For the year ended 31 December 2020**

The trustees have pleasure in submitting the report and financial statements for the year ended 31 December 2020.

#### **Trustees' responsibilities statement**

Charity law requires the trustees to prepare financial statements for each financial year which give a true and fair view of the state of affairs of the charity and of the incoming resources and application of resources, including the income and expenditure, of the charity for the year.

In preparing the financial statements, the trustees are required to:

- select suitable accounting policies and then apply them consistently;
- observe the methods and principles in the Charities SORP;
- make judgements and estimates that are reasonable and prudent;
- state whether applicable UK Accounting Standards have been followed, subject to any material departures disclosed and explained in the financial statement;
- prepare the financial statements on the going concern basis unless it is inappropriate to presume that the charitable company will continue in operation.

The trustees are responsible for keeping adequate accounting records that disclose with reasonable accuracy at any time the financial position of the charity and enable them to ensure that the financial statements comply with the Charities Act 2011. They are also responsible for safeguarding the assets of the charity and hence for taking reasonable steps for the prevention and detection of fraud and other irregularities.

#### **Structure, governance and management**

The trustees have responsibility to direct the charity's affairs in such a way as to promote the Objects.

##### *Day to day management*

The day to day management of the charity is carried out by the Senior Minister, responsible to the Board of Trustees made up of the trustees of the company.

General meetings are held monthly to discuss matters and for decision making. Meetings are carried out in line with the Governing Document of the charity.

## **Full Life Church & Christian Centre**

### **Report of the Directors (including the Trustees' Report) - Continued** **For the year ended 31 December 2020**

#### **Structure, governance and management continued**

##### *Recruitment and training of trustees*

Trustees are recruited based on their knowledge and experience in the services the charity provides to meet its objectives.

Trustee training is given before and during the trustee term.

New members of the Church Council are nominated by the Senior Minister and appointed by the Church Council.

##### *Risk management*

The board of trustees have overall responsibility for ensuring that the charity has appropriate systems of controls, financial or otherwise. They are also responsible for keeping proper accounting records, for safeguarding the assets of the charity and for taking reasonable steps for the prevention and detection of fraud and other irregularities and to provide reasonable assurance that:

- The charity is operating efficiently and effectively
- The assets are safeguarded against unauthorised use or disposition
- Proper records are maintained and financial information used within the charity reliable
- The charity complies with relevant laws and regulations

##### *Risk review*

The trustees have conducted a review of the major risks to which the charity is exposed and appropriate systems have been established to mitigate those risks. Significant external risks to funding have led to the development and implementation of a strategic plan. This will allow for the re-direction of funding and some activities.

Internal risks are minimised by the implementation of procedures for authorisation of all transactions and projects to ensure consistent quality of delivery for all operational aspects of the charity. These procedures are constantly reviewed to ensure that they still meet the needs of the charity.

#### **Objectives and activities**

Full Life Church exists to promote the Christian Faith and serve the wider community through Church services, outreach and community projects.

#### **Reserves policy**

The trustees have determined that the charity should aim to hold unrestricted cash of no less than £50,000 (which equates to approximately 3 months of unrestricted expenditure so that the charity could continue to operate should income and expenditure vary adversely. At the year end date, the charity held unrestricted cash in excess of this amount.

## **Full Life Church & Christian Centre**

### **Report of the Directors (including the Trustees' Report) - continued** **For the year ended 31 December 2020**

#### **Review of the year**

2020 was inevitably a different year, not just for Full Life but indeed for our whole country. Set against the context of Covid 19 there were of course many things that were different. Nevertheless many in ways . Full Life Church and ministries continued to develop. We have refocused on how we present our Mission and Values

#### *Mission Statement:*

Impact - Serve - Support

We have refocused on our mission to:

- Impact and Influence our Community for good and for God
- To Serve Others in our region and Nation
- To Support Mission Partners overseas

We have re-visited how we communicate our values, seeking to re-defining them:

Warmly Welcomes new friends and old

Authentically Worships the Living Saviour

Robustly Holds to the truths of God's Word

Creatively Communicates fullness of life in Jesus

Enthusiastically Encourages those around us

Healthily Honours those who serve and lead us

Generously Gives to support ministries and missions

Regularly Gathers Sundays and midweek

Willingly Serves others in fellowship and community

Persistently Prays 'Your Kingdom Come'

Our current aims over the period of 2021 and into 2022 have also been and will be re-visited after the Covid 19 period to enable us to re-focus on re-developing our Church and ministries as we enter a new season:

Current short and mid term aims as we continue through 2021 and in to 2022 are to redevelop our Church and specifically to again:

- Create Community
- Build Bridges
- Develop Disciples and ....
- Mobilise our Mission

## **Full Life Church & Christian Centre**

### **Report of the Directors (including the Trustees' Report) - continued** **For the year ended 31 December 2020**

*Specific goals that we will be aiming for:*

- Developing the spiritual and relational life of our Church fellowship by integrating new friends, strengthening peoples' faith, encouraging the concept of serving others
- Continuing to develop our ministry to combat food poverty, vulnerability and homelessness
- Re-launching and developing again our ministry to children, young people, and families
- Increasing the use and availability of our facilities for education and training, skills development, and activities that facilitate our community living healthily, well being and personal development as well as activities that facilitate Christian mission

*Main Activities During the Past Year*

These were obviously interrupted at the lockdown periods. Nevertheless, we were able to offer pastoral care and support to Church attendees and members of our community, and also conduct a wide variety of activities as legalities allowed. Activities such as:

- Weekly Church services, mid week Church and special guest services
- Family Stay and Play Toddler Groups
- Youth ministry and children's activities
- The Cove Community Coffee House
- Our Food Bank Ministry
- Keep fit and personal well being groups in our Living Well Community Suite
- Community Education courses in our Olive Suite
- Our partnerships with local Schools, and other community support organisations
- Social housing

Our Christian Residential Mission / Retreat Centre has been closed most of the year because of Covid 19, however we anticipate re-establishing this as soon as possible.

*At the time of writing this report in 2021*

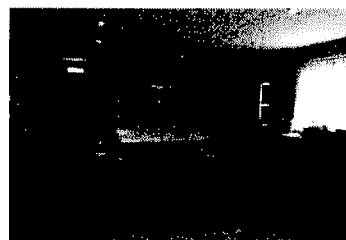
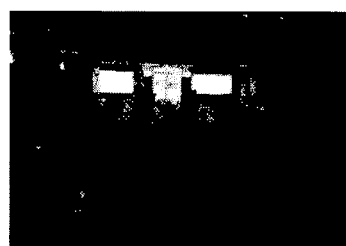
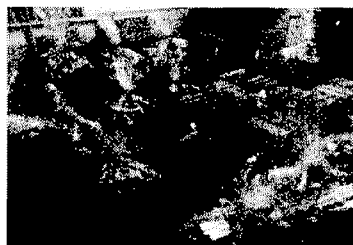
- Our Church is coming back together and growing again. Our gatherings have been more diverse and accessible to everyone attending, and in fact this has increased accessibility
- The Cove Coffee House is continuing to experience good progress with a mixture of regular visitors and occasional visitors
- Our Family groups have restarted and are attracting regular visitors
- Our Conference Ministry is re-establishing. This is in part due the opening of the Cove
- Our Food bank is continuing to serve people in our area experiencing food poverty

## **Full Life Church & Christian Centre**

### **Report of the Directors (including the Trustees' Report) - continued** **For the year ended 31 December 2020**

Activities we have been successful in re-opening are:

- **Family / Parent and Toddlers Playgroups** which currently operate 4 times each week so far connecting with approximately 50 families.
- Our **Cove Coffee House** complete with sensory garden which we seek to support and address the is serving hundreds of people each week, and through issues of loneliness and social isolation, lock down depression, loss of community contact, and the need for people to find a place of Refuge, Peace, and Shelter.
- Our **Food Bank** supplied over 4000 meals throughout 2020, supporting hundreds of family units challenged by food poverty. We also put together and distributed dozens of Christmas hampers throughout in the week before Christmas, so that families could benefit from reduced pressure over the period. Special thanks to the employees of Royal Mail for their kind support and other doners.
- We have recently re-located and re-developed our food bank ministry within our premises to give us an improved space to organise food parcels and position ourselves for growth and diversity, in anticipation of the potential effects of the withdrawal of furlough.
- Our **Olive Suite** which provides an ideal setting for educational groups and courses. We facilitated a wide variety of community courses and groups
- Our **Living Well and Conference Suite** which provided excellent space for both adults and people young people who attend groups for keeping fit, and living well, physical exercise, and developing performing arts skills.
- Our **Social Housing** which continued to provides supported and safe housing for people who may have experienced loss, or life changing health issues





## **Full Life Church & Christian Centre**

### **Report of the Directors (including the Trustees' Report) - continued** **For the year ended 31 December 2020**

We continued to **Serve Others** in our Region and Nation by continuing to serve other Churches and ministries through our:

- **Day Conference Centre.** We now again host numerous groups from our community that enrich peoples' lives and facilitate community involvement
- **Residential Retreat and Mission Facility** which still is able to facilitate groups from around the world
- Providing **Leadership Training programmes** to other Churches and leaders as requested



Of course it is difficult to forecast the length of the readjustment period required after the pandemic, nevertheless we are now seeing things gradually return to a similarity of normality.

We consider that we are **Supporting Mission Partners** overseas by:

- Continuing our relationship with **Watoto Child Care** Ministries based in Kampala, Uganda
- Continuing to Support our **Mission Partners in Asturias, Spain.**
- Developing a new service partnership with the **Nicodemus** charity that works in UK and Central America with unreached people groups

This means that we are supporting Mission Partners on 3 continents.

Our aim is to develop support for other projects in due course.

We have conducted 2 Trustee Training courses that have helped to develop volunteers within our organisation and others. This has been a support to a number of other Churches and charitable organisations.

#### **A Finance Remark**

During 2020 we were blessed by:

- Everyone who practiced the concept of biblical giving
- The Gift Aid Schemes
- Special Offerings
- Help in applying for grants
- Help to promote existing ministries
- Effective income bearing ministry departments

## **Full Life Church & Christian Centre**

### **Report of the Directors (including the Trustees' Report) - continued** **For the year ended 31 December 2020**

#### *Celebrations*

We are currently celebrating the achievement of Pastor Wesley who has received national accreditation as an A/G Minister. Wesley has spent a number of years in training with 3 different Churches across England, and also gaining further experience in working for Christians Against Poverty managing different partnership regions from the South West, London, and Yorkshire.

#### *Special Thanks*

Gratitude is expressed to all those who have shared the responsibility of leadership this year.

Special thanks are expressed this year to the Trustees who have agreed to stand for the current period, and support our Pastors Paul and Wesley.

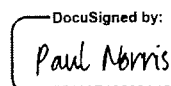
Peter Wilson  
Pastor Kevin Foster

Prospective new trustees are being trained.

Special thanks also go to the following organisations for their generous support through the year:

Tesco Supermarket	For Food Bank and Hampers
Morrisons Supermarket	For Food Bank and Hamper & Watoto Choir support
All Maltby Schools	For Food Bank and Hampers
Rotherham Rotary Club	For Food Bank and Hampers
Fair Share	For Food Bank and Hampers
Royal Mail Employees	For Food Bank and Hampers
Other generous donors	For special projects

#### **On Behalf of the Board of Trustees:**

DocuSigned by:  
  
F5630E13293A420...  
Paul Norris - Chair  
Date: 20-Oct-21 | 7:05 AM PDT

**Independent Examiners Report to the Trustees of**  
**Full Life Church & Christian Centre**  
**For the year ended 31 December 2020**

We report on the accounts for the year ended 31 December 2020 set out on pages 9 to 18.

**Retrospective responsibilities of trustees and examiner**

The trustees are responsible for the preparation of the accounts in accordance with the requirements of the Charities Act 2011 (The Act). The trustees consider that an audit is not required for this year under section 145(1) of the Charities Act 2011 and that an independent examination is needed.

Having satisfied myself that the charity is not subject to audit under Charity Law and is eligible for independent examination, it is my responsibility to;

- examine the accounts under section 145 of the Charities Act 2011;
- to follow the procedures laid down in the general directions given by the Charity Commission under section 145(5)(b) of the Charities Act 2011; and
- to state whether particular matters have come to my attention.

**Basis of independent examiner's report**

My examination was carried out in accordance with the general directions given by the Charity Commission. An examination includes a review of the accounting records kept by the charity and a comparison of the accounts presented with those records. It also includes consideration of any unusual items or disclosures in the accounts and seeking explanations from you as trustees concerning any such matters. The procedures undertaken do not provide all the evidence that would be required in an audit and consequently no opinion is given as to whether the accounts present a 'true and fair view' and the report is limited to those matters set out in the statement below.

**Independent examiner's statement**

In connection with my examination, no matter has come to my attention:

- (1) accounting records were not kept in respect of the Charity as required by section 130 of The Act; or
- (2) the accounts do not accord with those records; or
- (3) the accounts do not comply with the applicable requirements concerning form and content of accounts set out in the Charities (Accounts and Reports) Regulations 2008 other than any requirement that the accounts give a 'true and fair' view which is not a matter considered as part of an independent examination

I have no concerns and have come across no other matters in connection with the examination to which attention should be drawn in this report in order to enable a proper understanding of the accounts to be reached.

**Jon Lister FCCA**

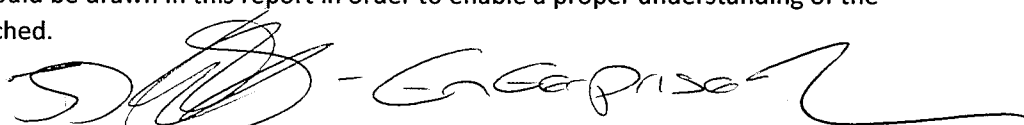
**Enterprise Accountancy Services Limited**

8 Castlegate

Tickhill

Doncaster

DN11 9QU



Dated:

25-10-2021

**Full Life Church & Christian Centre****Statement of Financial Activities (including Income & Expenditure Account)**  
**For the year ended 31 December 2020**

	Notes	Unrestricted Funds 2020 £	Restricted Funds 2020 £	Total Funds 2020 £	Total Funds 2019 £
<b>INCOMING RESOURCES</b>					
COVID Grants		61,109		61,109	-
<b>Incoming resources from charitable activities:</b>					
Donations and legacies	2	77,027	1,000	78,027	86,794
Charitable activities:	3	44,582	-	44,582	186,148
Investment income		11		11	19
<b>TOTAL INCOMING RESOURCES</b>		<b>182,728</b>	<b>1,000</b>	<b>183,728</b>	<b>272,961</b>
<b>RESOURCES EXPENDED</b>					
Charitable activities	3	170,437	-	170,437	317,545
Governance costs	4	2,857	-	2,857	4,260
<b>TOTAL RESOURCES EXPENDED</b>		<b>173,294</b>	<b>-</b>	<b>173,294</b>	<b>321,805</b>
<b>NET INCOMING RESOURCES</b>	5	<b>9,434</b>	<b>1,000</b>	<b>10,434</b>	<b>( 48,844)</b>
<b>TRANSFER</b>		<b>( 447)</b>	<b>447</b>	<b>-</b>	<b>-</b>
Total funds brought forward		1,285,489	2,719	1,288,208	1,337,052
<b>TOTAL FUNDS CARRIED FORWARD</b>		<b>1,294,476</b>	<b>4,166</b>	<b>1,298,642</b>	<b>1,288,208</b>

The statement of financial activities includes all gains and losses in the year. All incoming resources and resources expended derive from continuing activities.

**Full Life Church & Christian Centre****Charity number: 1052600****Balance Sheet as at 31 December 2020**

	Notes	2020		2019	
		£	£	£	£
<b>FIXED ASSETS</b>					
Tangible assets	7		1,650,000		1,655,405
<b>CURRENT ASSETS</b>					
Stock		-		1,611	
Debtors	8	-		2,998	
Cash at bank and in hand		116,586		102,781	
		<u>116,586</u>		<u>107,390</u>	
<b>CURRENT LIABILITIES</b>					
Creditors due within one year	9	30,576		35,063	
<b>NET CURRENT ASSETS/(LIABILITIES)</b>					
			<u>86,011</u>		<u>72,327</u>
Creditors due after more than one year	10	( 434,368)		( 439,524)	
<b>TOTAL ASSETS LESS CURRENT LIABILITIES</b>					
			<u>1,301,643</u>		<u>1,288,208</u>
<b>FUNDS</b>					
Unrestricted funds	11	1,294,476		1,285,489	
Restricted funds	11	4,166		2,719	
<b>TOTAL FUNDS</b>					
	11		<u>1,298,642</u>		<u>1,288,208</u>

The financial statements were approved by the Board of Trustees and were signed on its behalf by:

DocuSigned by:

Paul Norris

F5630E13293A420...  
Paul Norris - Trustee

Date: 20-Oct-21 | 7:05 AM PDT

## **Full Life Church & Christian Centre**

### **Notes to the Financial Statements**

#### **For the year ended 31 December 2020**

##### **1 ACCOUNTING POLICIES**

###### **Basis of accounting**

The financial statements have been prepared under the historical cost convention and in accordance with the Financial Reporting Standard for Smaller Entities (effective January 2015) and with the Accounting and Reporting by: Statement of Recommended Practice (issued in January 2015).

###### **Going concern**

The financial statements have been prepared on a going concern basis. The Charity's activities are dependent upon the continued support of its key funders who have undertaken to provide such support for the foreseeable future.

If the going concern basis were not appropriate, adjustments would have to be made to reduce the value of assets to their recoverable values, to provide any further liabilities that may arise and reclassify fixed assets to current assets and long terms liabilities to current liabilities.

###### **Cash flow statement**

The trustees have taken advantage of the exemption in Financial Reporting Standard No. 102 from including a cash flow statement in the financial statement on the grounds that the charity is small.

###### **Grants receivable**

Revenue grants are credited to the Statement of Financial Activities in the year for which they are received.

###### **Taxation**

The company is a registered charity and its activities are not subject to taxation.

###### **Tangible fixed assets**

Tangible fixed assets are stated at cost less depreciation. Depreciation is provided at rates calculated to write off the cost less estimated residual value of each asset over its expected useful life, as follows;

Freehold Land and Buildings	Not depreciated
Fixtures, fittings and equipment	20% straight line basis

###### **Staff Costs and overhead expenses**

Staff costs and overhead expenses are allocated to activities on the basis of time spent unless otherwise identified to a particular fund.

**Full Life Church & Christian Centre****Notes to the Financial Statements - continued**  
**For the year ended 31 December 2020****Fund Accounting**

Funds held by the charity are either:

Restricted funds - these are funds that can only be used for a particular restricted purposes within the objects of the charity. Restrictions arise when specified by the donor or when funds are raised for particular restricted purposes.

Unrestricted funds - these are funds which can be used at the organisation's discretion in accordance with the objects of the charity.

Designated funds - these funds comprise unrestricted funds that have been set aside by the trustees for restricted purposes.

**2 Donations and legacies**

	Unrestricted	Restricted	Total 2020	Total 2019
	£	£	£	£
Donations of cash or similar	68,933		68,933	67,103
Donations in kind (Food Bank)	61	1,000	1,061	7,270
Gift Aid recoverable	8,033		8,033	12,421
	<b>77,027</b>	<b>1,000</b>	<b>78,027</b>	<b>86,794</b>

**Charitable activities**

	Unrestricted	Restricted	Total 2020	Total 2019
	£	£	£	£
Charitable grants	-	3,000	3,000	3,250
Pre-school/early years funding	-		-	71,052
Parent & Toddler	833		833	2,087
Rental income	14,772		14,772	14,666
Conference and centre	13,772		13,772	41,038
Other	116		116	7,400
Café	15,089	-	15,089	46,655
	<b>44,582</b>	<b>3,000</b>	<b>47,582</b>	<b>186,148</b>

**Full Life Church & Christian Centre****Notes to the Financial Statements - continued****For the year ended 31 December 2020****3 RESOURCES EXPENDED - CHARITABLE ACTIVITIES**

	Unrestricted	Restricted	Total 2020	Total 2019
	£	£	£	£
Salaries and staff related costs	99,906	-	99,906	177,592
Training	219	-	219	1,380
Activities and Ministry expenses	4,147	-	4,147	10,140
Food bank costs	1,977	-	1,977	7,177
Café costs	8,711	-	8,711	20,255
Administration costs	3,135	-	3,135	10,910
Property costs	25,850	-	25,850	24,018
Finance costs	19,838	-	19,838	21,059
Catering	271	-	271	3,143
Sundry expenses	977	-	977	2,578
Depreciation	5,405	-	5,405	39,293
COVID-19 costs	-	-	-	-
	<b>170,437</b>	<b>-</b>	<b>170,437</b>	<b>317,545</b>

**4 RESOURCES EXPENDED - GOVERNANCE COSTS**

	Unrestricted	Restricted	Total 2020	Total 2019
	£	£	£	£
Legal and professional fees	1,609	-	1,609	-
Independent examiners fees	1,248	-	1,248	4,260
	<b>2,857</b>	<b>-</b>	<b>2,857</b>	<b>4,260</b>



## Full Life Church & Christian Centre

### Notes to the Financial Statements - continued For the year ended 31 December 2020

#### 5 NET INCOMING RESOURCES

Net incoming resources for the year is stated after charging:

	2020	2019
	£	£
Depreciation - owned assets	5,405	39,293

#### 6 Information on Trustees and employees

The average number of employees during the year was made 6 (2019: 21)

The total wage amount for all salaries was £99,906 - this covered 11 posts over the year one of which was a trustee who was not paid above £60,000

No employee received emoluments of more than £60,000.

The charity's key management is comprised of trustees.

**Full Life Church & Christian Centre****Notes to the Financial Statements - continued  
For the year ended 31 December 2020****7 TANGIBLE FIXED ASSETS**

	<b>Freehold Property £</b>	<b>Fixtures &amp; Fittings £</b>	<b>Office Equipment £</b>	<b>Total £</b>
<b>COST</b>				
At 1st January 2020	1,650,000	81,272	7,359	<b>1,738,631</b>
Additions	-	-	-	-
At 31st December 2020	<u>1,650,000</u>	<u>81,272</u>	<u>7,359</u>	<u><b>1,738,631</b></u>
<b>DEPRECIATION</b>				
At 1st January 2020	-	75,867	7,359	<b>83,226</b>
Charge for year	-	5,405	-	<b>5,405</b>
At 31st December 2020	<u>-</u>	<u>81,272</u>	<u>7,359</u>	<u><b>88,631</b></u>
<b>NET BOOK VALUE</b>				
At 31st December 2020	<u>1,650,000</u>	<u>-</u>	<u>-</u>	<u><b>1,650,000</b></u>
At 31st December 2019	<u>1,650,000</u>	<u>5,405</u>	<u>-</u>	<u><b>1,655,405</b></u>

The trustees have elected not to comply with accounting standards and have not depreciated the freehold property.

The trustees maintain the building on an ongoing basis to ensure that no impairment to the condition of the building occurs.

The trustees acknowledge that any reduction in the value of the property would reduce the value in the unrestricted reserves.

The property was valued by the trustees on an open market value assuming vacant possession.

**Full Life Church & Christian Centre****Notes to the Financial Statements - continued**  
**For the year ended 31 December 2020****8 DEBTORS: AMOUNTS FALLING DUE WITHIN ONE YEAR**

	<b>2020</b>	<b>2019</b>
	<b>£</b>	<b>£</b>
Gift Aid recoverable	-	1,745
PAYE recoverable	-	1,253
	<u>-</u>	<u>2,998</u>

**9 CREDITORS: AMOUNTS FALLING DUE WITHIN ONE YEAR**

	<b>2020</b>	<b>2019</b>
	<b>£</b>	<b>£</b>
Trade creditors	1,525	4,272
Accrued expenses	1,200	2,940
Bank loans	27,851	27,851
	<u>30,576</u>	<u>35,063</u>

**10 CREDITORS: AMOUNTS FALLING AFTER MORE THAN ONE YEAR**

	<b>2020</b>	<b>2019</b>
	<b>£</b>	<b>£</b>
Bank loans	434,368	439,524
	<u>434,368</u>	<u>439,524</u>

The bank loan is secured by a first legal charge over the freehold property of the charity.

**11 ANALYSIS OF NET ASSETS BETWEEN FUNDS**

	<b>Unrestricted Funds £</b>	<b>Restricted Funds £</b>	<b>Total Funds £</b>
Tangible fixed assets	1,650,000	-	1,650,000
Current assets	115,586	1,000	116,586
Current liabilities	( 30,576)	-	( 30,576)
Creditors due after > 1 year	( 434,368)	-	( 434,368)
Net assets at 31st December 2020	<u>1,300,643</u>	<u>1,000</u>	<u>1,301,643</u>

## Full Life Church &amp; Christian Centre

Notes to the Financial Statements - continued  
For the year ended 31 December 2020

## 12 MOVEMENT IN FUNDS

	At 01.01.2020	Incoming Resources	Outgoing Resources	Transfers	At 31.12.2020
<b>General funds</b>	1,285,489	182,728	173,294	-	1,294,923
<b>Designated funds</b>					
Property fund	-	-	-	-	-
Redundancy fund	-	-	-	-	-
<b>Total unrestricted funds</b>	<u>1,285,489</u>	<u>182,728</u>	<u>173,294</u>	<u>-</u>	<u>1,294,923</u>
 Building development	2,250	3,000	-	-	5,250
Food Bank	469	1,000	-	-	1,469
<b>Total restricted funds</b>	<u>2,719</u>	<u>4,000</u>	<u>-</u>	<u>-</u>	<u>6,719</u>
<b>Total funds</b>	<u>1,288,208</u>	<u>186,728</u>	<u>173,294</u>	<u>-</u>	<u>1,301,642</u>