

FULL LIFE CHURCH (MALTBY)

England & Wales · Charity number 1052600

Details

Other names	FULL LIFE CHRISTIAN CENTRE, FULL LIFE CHURCH AND CHRISTIAN CENTRE
Status	Registered
Legal form	Trust
Registered	1996-02-03
Register	View on the Charity Commission register

Contact

Address High Street
Maltby
Rotherham
South Yorkshire
S66 8LF

Phone 01709818213

Email info@full-life.org.uk

Website www.full-life.org.uk

Activities

Objects: THE ADVANCEMENT OF THE CHRISTIAN RELIGION BY THE PROCLAMATION AND FURTHERANCE OF THE GOSPEL OF GOD

Activities: Full Life Church exists to promote the Christian faith and serve our wider community through Church services, outreach and community projects. These projects include supporting members of our local community through daily activities, such as Foodbank, Warm Hub, Coffee House, supported housing for vulnerable people, weekly activities for children and young people, and training and conferencing.

Classification

- **How:** Provides Human Resources, Provides Buildings/facilities/open Space, Provides Services, Provides Advocacy/advice/information
- **What:** General Charitable Purposes, Education/training, Disability, Accommodation/housing, Religious Activities
- **Who:** Children/young People, Elderly/old People, People With Disabilities, The General Public/mankind

Geography

- **Area of benefit:** IN PRACTICE ROTHERHAM
- Barnsley
- Doncaster
- Rotherham
- Sheffield City

Finances

Period end	Income	Expenditure	Assets	Employees
2024-12-31	£239,695	£251,629	-	-
2023-12-31	£241,565	£224,160	-	-
2022-12-31	£234,745	£210,333	-	-
2021-12-31	£160,670	£162,838	-	-
2020-12-31	£183,728	£173,294	-	-

Trustees

Name	Role	Appointed
Rev Paul Norris	Chair	
James Raybould		2023-03-01
Pastor KD Foster		2017-09-25
Peter Wilson		2021-01-01
Rev Wesley Norris		2023-03-01

FULL LIFE CHURCH (MALTBY)

England & Wales - Charity number 1052600

Accounts

Full Life Church & Christian Centre

Report and Financial Statements

For the year ended 31 December 2024

Registered Charity Number: 1052600

Full Life Church & Christian Centre

Contents of the Financial Statements
For the year ended 31 December 2024

	Page
Company Information	1
Trustees' Annual Report	2 - 9
Independent Examiners Report	10
Statement of Financial Activities	11
Balance Sheet	12
Notes to Financial Statements	13 - 19

Full Life Church & Christian Centre

Company Information

For the year ended 31 December 2024

REGISTERED OFFICE:

Full Life Church
Maltby
Rotherham
South Yorkshire
S66 8LF

TRUSTEES:

Pastor Paul Norris
Pastor Kevin Foster
Peter Wilson
Jim Raybould
Pastor Wesley Norris

INDEPENDENT EXAMINER:

Jon Lister FCCA
Enterprise Chartered Certified Accountants
8 Castlegate
Tickhill
Doncaster
DN11 9QU

BANKERS:

Natwest Bank Plc
Bawtry Road
Wickersley
Rotherham
S60 0JY

Full Life Church & Christian Centre

Trustees' Annual Report

For the year ended 31 December 2024

The trustees have pleasure in submitting the report and financial statements for the year ended 31 December 2024.

Trustees' responsibilities statement

Charity law requires the trustees to prepare financial statements for each financial year which give a true and fair view of the state of affairs of the charity and of the incoming resources and application of resources, including the income and expenditure, of the charity for the year.

In preparing the financial statements, the trustees are required to:

- select suitable accounting policies and then apply them consistently;
- observe the methods and principles in the Charities SORP;
- make judgements and estimates that are reasonable and prudent;
- state whether applicable UK Accounting Standards have been followed, subject to any material departures disclosed and explained in the financial statement;
- prepare the financial statements on the going concern basis unless it is inappropriate to presume that the charitable company will continue in operation.

The trustees are responsible for keeping adequate accounting records that disclose with reasonable accuracy at any time the financial position of the charity and enable them to ensure that the financial statements comply with the Charities Act 2011. They are also responsible for safeguarding the assets of the charity and hence for taking reasonable steps for the prevention and detection of fraud and other irregularities.

Structure, governance and management

The trustees have responsibility to direct the charity's affairs in such a way as to promote the Objects.

Day to day management

The day to day management of the charity is carried out by the Senior Minister, responsible to the Board of Trustees made up of the trustees of the company.

General meetings are held monthly to discuss matters and for decision making. Meetings are carried out in line with the Governing Document of the charity.

Full Life Church & Christian Centre

Report of the Directors (including the Trustees' Report) - Continued **For the year ended 31 December 2024**

Structure, governance and management continued

Recruitment and training of trustees

Trustees are recruited based on their knowledge and experience in the services the charity provides to meet its objectives.

Trustee training is given before and during the trustee term.

New members of the Church Council are nominated by the Senior Minister and appointed by the Church Council.

Risk management

The board of trustees have overall responsibility for ensuring that the charity has appropriate systems of controls, financial or otherwise. They are also responsible for keeping proper accounting records, for safeguarding the assets of the charity and for taking reasonable steps for the prevention and detection of fraud and other irregularities and to provide reasonable assurance that:

- The charity is operating efficiently and effectively
- The assets are safeguarded against unauthorised use or disposition
- Proper records are maintained and financial information used within the charity reliable
- The charity complies with relevant laws and regulations

Risk review

The trustees have conducted a review of the major risks to which the charity is exposed and appropriate systems have been established to mitigate those risks. Significant external risks to funding have led to the development and implementation of a strategic plan. This will allow for the re-direction of funding and some activities.

Internal risks are minimised by the implementation of procedures for authorisation of all transactions and projects to ensure consistent quality of delivery for all operational aspects of the charity. These procedures are constantly reviewed to ensure that they still meet the needs of the charity.

Objectives and activities

Full Life Church exists to promote the Christian Faith and serve the wider community through Church services, outreach and community projects.

Reserves policy

The trustees have determined that the charity should aim to hold unrestricted cash of no less than £50,000 (which equates to approximately 3 months of unrestricted expenditure so that the charity could continue to operate should income and expenditure vary adversely. At the year end date, the charity held unrestricted cash in excess of this amount.

Full Life Church & Christian Centre

Report of the Directors (including the Trustees' Report) - continued For the year ended 31 December 2024

Full Life Church Annual Report for 2024/25

The period of 2024/25 has again been a time of development and progress. All of this has reflected our vision, mission and values statements:

Vision:

To grow a significant and dynamic Community Church, that serves Maltby, and the communities within South Yorkshire and surrounding counties.

Mission Statement:

Our mission statement continues to serve us well; **Impact - Serve - Support**

- Impact and Influence our Community for good and for God
- To Serve Others in our region and Nation
- **To Support Mission Partners overseas Values:** We have continued to embody our values in ministry and ethos:

Values:

We have continued to embody our values in ministry and ethos:

- Being passionate for God and keeping **Christ at the centre of everything we do**
- Keeping a **Christ-like attitude** and servant spirit in the way we serve God and each other
- Being a Church that is built upon **sound, relevant, practical and inspirational Christian** teaching & inspiring, contemporary and vibrant worship
- **Empowering people** to rise towards their potential
- To be a **united and purposeful people**, committed to pursuing excellence in the way we serve God, each other, and our community
- To be driven by **purpose not programme**, and by our relationship with Jesus

Our current aims over the period of 2025 and into 2026 are being constantly re-visited as we continue to grow and development, and because our capacity for growth continues.

We have been able to conduct ongoing staff and trustee mentoring. We have also been able to grow our volunteer base to 75 - 80 volunteers within our Church ministries.

Full Life Church & Christian Centre

Report of the Directors (including the Trustees' Report) - continued For the year ended 31 December 2024

Our current aims over the period of 2025 and into 2026 are being constantly re-visited as we continue to grow and development, and because our capacity for growth continues. We have been able to conduct ongoing staff and trustee mentoring. We have also been able to grow our volunteer base to 75 - 80 volunteers within our Church ministries.

Current short and mid term aims as we continued through 2025 and in to 2026 have been to:

- Continue to provide a welcoming, nurturing & vibrant Church with meaningful friendships
- Increase and manage the diversity of ways we serve our Community

Main Activities During the Past Year:

We have continued to **Serve Others Locally Through:**

Our **Church**. Our gatherings have been more diverse, more accessible, and all age for everyone attending, and in fact this has facilitated increase. We have held around 180 regular services and small groups, throughout the year, including Sunday mornings Service, mid-week Cafe Church, Alpha courses, baptisms, & funerals. Consequently we have been able to offer improved pastoral care, and support to Church attendees, and members of our community.

Our **Family Centre - Parent / Carer & Toddlers Playgroups** are currently open 4 times each week so far connecting with approximately 100+ families throughout the year

Our Sunday & mid week **Life Kids' groups** have continued to run weekly, serving over 80 different children

Our **Cove Coffee House**, complete with quiet and **sensory garden** open 5 full days per week, and serve hundreds of people each week. Every day we seek to support and address the issues of loneliness and social isolation, depression, loss of community contact, and the need for people to find a place of "Refuge, Peace, and Shelter

Our **Community Day Facilities** - We continue to host numerous groups from our community in our 'Living Well Suite'. These groups enrich peoples' lives and facilitate significant community involvement through exercise, sport, and creative arts.

Our **Food Bank & Warm Hub** - This area of ministry has seen significant growth over the last 12 months. Our Food Bank is registered with Trussell Trust. Our aim is to combat food poverty, vulnerability and homelessness, and the associated long term challenges associated with those issues that affect so many people. During 2024 we gave away c.45,000 emergency food meals through our week to week program. On top of this we were able to put together 75 Christmas hampers with enough food in them to create c.100 meals. This means the total number of meals we supplied to our community and surrounding area amounted to over 50,000 meals. This has grown again during 2025.

Full Life Church & Christian Centre

Report of the Directors (including the Trustees' Report) - continued For the year ended 31 December 2024

Facilitating Community Support & Networking - We now facilitate a number SYHA staff working on the 'Jobs Plus' project. This project has enabled people coming to our own projects like **Food Bank, Family Centre, and the Cove** etc., to access the Jobs Plus service and find much needed employment. Support from the **Yorkshire Miners' Community Organisation** of £15,000, and support from The **Community Fund** of £13,500 have helped significantly in the funding of food, overheads, and support staff to enable all this to be done more effectively, and support greater numbers of people within the local community over a 2 year period. Up to and including the time of writing this report we can also report that we have received assistance through **Trussel Trust** to employ a **Citizens' Advice Worker** 2 days per week. We have also recently begun to facilitate **NHS** staff working within our Centre in their own project to support people within our community with life limiting health issues.

Our **Social Housing** continue to provide supported and safe housing for people who may have experienced loss, or life changing health issues

Our **Residential Training Facility** - During 2024 our Residential Centre was used for Christian groups and individuals from the UK and overseas, training to work with the PAIS organisation, in Youth and School settings, & community / street Pastor settings around the UK, As a consequence, our various activities and outreach projects facilitate around 1,500 visits per week from around 1,000 people. This number grows over the period of 1 month to c.2000 different local people visiting our Church Centre, and this number grows over the period of a year to an estimated 3000+ people. This means that we can realistically say, as many do, that Full Life Church is very much a **hub within our immediate and surrounding communities**, many of which continue to experience significant spiritual searching, the challenges of social isolation, food poverty, mental health challenges and social breakdown.

We have continued to Serve Others in our Region and Nation by continuing to serve other Churches and ministries through our:

Residential Training and Mission facility which still is able to facilitate groups from around the world

Providing **Leadership Training programmes** and pastoral care to other Churches, and leaders as requested We consider that we are **Supporting Mission Partners** overseas by:

Continuing to support our Mission Partners in **Asturias, Spain**
Facilitating the **training** of people who are moving on to work overseas

Full Life Church & Christian Centre

Report of the Directors (including the Trustees' Report) - continued For the year ended 31 December 2024

The Main Areas of Development over the last year have been:

Church Growth - The continued growth of our Church fellowship. This has required work to integrate new friends, strengthen peoples' faith, and encourage the concept of serving others

Children's Ministry - Significant growth in our children's ministry, with groups for different ages

Youth Ministry - The restarting of our monthly Youth activities and meetings

Life Groups - we have continued to provide a range of Life Groups - small groups which meet fortnightly around the area . These facilitate pastoral care and teaching. We use our own pre-recorded video material to support Life Group facilitators and group interaction

Serving People with Vulnerabilities - Through growth in our ministry to combat food poverty, and homelessness through our Trussell Trust registered Food-bank, and our Warm Hub (which is open on the same days), and networking with various projects including our own Restore Furniture Project - This has been our response to a growing need within our community, for families without beds, and other basic furniture to facilitate family life. We plan to develop this ministry project and have outlined the concept 'Restore Furniture' - restoring not only used furniture to be re-used, but restoring peoples' sense of dignity by helping to improve their living spaces

Community Events - Creating numerous community, recreational, and social activities. These have included: Spring Fayre, Christmas Fayre, Beech Days, Picnic in the Park, Men's breakfasts, Women's breakfasts, Ice-cream Sundays, Family Fest days, Litter Picks, Community clean up days, the Light Party, and many more

Leadership Restructuring:

Towards the end of 2023, our Church also passed in to, and through a significant period of re-structuring. This has proved to be a period of continued growth and blessing. Our Senior Pastor, Wesley continues to lead our Church, supported by Pastor Paul. They are supported by growing teams of staff, Pastoral Support workers, and many other volunteers. We pray that Pastor Wesley will know continued blessing in life and ministry, along with Naomi who also serves us in heading up various ministries, as they continue to facilitate our Church's journey in to the coming years

Celebrations:

This year we celebrated with numerous families dedicating their children, and numerous people who were baptised as outward expression of new found faith in Christ. We also celebrated the birthday of our oldest member who was 102 years old - she has served our Church for over 92 years.

Full Life Church & Christian Centre

Report of the Directors (including the Trustees' Report) - continued For the year ended 31 December 2024

A Finance Remark:

During the period of 2024 and in to 2025 we have been blessed by the support in giving, and volunteering we have received from various donors. We are grateful for:

Everyone who practiced the concept of biblical giving

The Gift Aid Schemes

Special Offerings

Help in applying for grants

Grant funding Organisations

Effective income bearing ministry departments

Regular giving is at the heart of our donations, and this finances so much of what we are able to do.

Special Thanks:

We have been particularly encouraged by the support of various individuals and organisations that have helped us in efforts to support our community.

Not least of all, special thanks also go to the following organisations for their generous support through the year:

Full Life Church members, with finance, food & volunteering Public donations of food

Hope Church, Rotherham food donations

Maltby Tesco Supermarket For Food Bank & Hampers, & grant donation

Dinnington Tesco Supermarket For Food Bank & Hampers (valued around £5,000)

Edlington Asda Supermarket For Food Bank

Rossington Asda Supermarket For Food Bank

FareShare For Food Bank & Hampers

GXO For food donations

Maltby Academy, For Food Bank & Hampers, and volunteering

Lilly Hall Academy School

Maltby Manor Academy School

Royal Mail Employees For Food Bank & Hampers

The Probation Service employees for Food Bank

Galliford - Try Cooperative Group

Yorkshire Miners Community Fund for Food bank & related projects

The Community Fund for support creating community events etc

Trussell Trust - continued advise, support in accessing funding etc

Full Life Church & Christian Centre

Report of the Directors (including the Trustees' Report) - continued
For the year ended 31 December 2024

Special Thanks: (continued)

South Yorkshire Housing Authority
Rotherham MBC, help with disposing of litter picks bags
Abbeywood School (Witherslack Group)
Wickersley School Sports College Year 12

And numerous other valued, generous individual and organisational donors for special projects

Special thanks are expressed this year to our Trustees who have agreed to stand for the current period, and support our Pastors Wesley, and Paul
Gratitude is expressed to all those who have shared the other responsibilities of key roles over the past year.

Respectfully Submitted
Paul Norris CMgr FCMI Team Pastor, and Trustee
Full Life Church, Maltby

**Independent Examiners Report to the Trustees of
Full Life Church & Christian Centre
For the year ended 31 December 2024**

We report on the accounts for the year ended 31 December 2024 set out on pages 11 to 19.

Retrospective responsibilities of trustees and examiner

The trustees are responsible for the preparation of the accounts in accordance with the requirements of the Charities Act 2011 (The Act). The trustees consider that an audit is not required for this year under section 145(1) of the Charities Act 2011 and that an independent examination is needed.

Having satisfied myself that the charity is not subject to audit under Charity Law and is eligible for independent examination, it is my responsibility to;

- examine the accounts under section 145 of the Charities Act 2011;
- to follow the procedures laid down in the general directions given by the Charity Commission under section 145(5)(b) of the Charities Act 2011; and
- to state whether particular matters have come to my attention.

Basis of independent examiner's report

My examination was carried out in accordance with the general directions given by the Charity Commission. An examination includes a review of the accounting records kept by the charity and a comparison of the accounts presented with those records. It also includes consideration of any unusual items or disclosures in the accounts and seeking explanations from you as trustees concerning any such matters. The procedures undertaken do not provide all the evidence that would be required in an audit and consequently no opinion is given as to whether the accounts present a 'true and fair view' and the report is limited to those matters set out in the statement below.

Independent examiner's statement

In connection with my examination, no matter has come to my attention:

- (1) accounting records were not kept in respect of the Charity as required by section 130 of The Act; or
- (2) the accounts do not accord with those records; or
- (3) the accounts do not comply with the applicable requirements concerning form and content of accounts set out in the Charities (Accounts and Reports) Regulations 2008 other than any requirement that the accounts give a 'true and fair' view which is not a matter considered as part of an independent examination

I have no concerns and have come across no other matters in connection with the examination to which attention should be drawn in this report in order to enable a proper understanding of the accounts to be reached.

Jon Lister FCCA
Enterprise Accountancy Services Limited
8 Castlegate
Tickhill
Doncaster
DN11 9QU

Dated:

Full Life Church & Christian Centre

Statement of Financial Activities (including Income & Expenditure Account)
For the year ended 31 December 2024

	Notes	Unrestricted Funds 2024 £	Restricted Funds 2024 £	Total Funds 2024 £	Total Funds 2023 £
INCOMING RESOURCES					
Grants		-	-	-	-
Incoming resources from charitable activities:					
Donations and legacies	2	84,699	886	85,586	104,334
Charitable activities:	3	153,712	-	153,712	137,015
Investment income		398	-	398	216
TOTAL INCOMING RESOURCES		238,809	886	239,695	241,565
RESOURCES EXPENDED					
Charitable activities	3	244,658	2,871	247,529	223,110
Governance costs	4	4,100	-	4,100	1,050
TOTAL RESOURCES EXPENDED		248,758	2,871	251,629	224,160
NET INCOMING RESOURCES	5	(9,949)	(1,985)	(11,934)	17,405
TRANSFER		(4,653)	4,653	-	-
Total funds brought forward		736,041	5,250	741,291	723,886
TOTAL FUNDS CARRIED FORWARD		721,439	7,918	729,357	741,291

The statement of financial activities includes all gains and losses in the year. All incoming resources and resources expended derive from continuing activities.

Full Life Church & Christian Centre
Charity number: 1052600
Balance Sheet as at 31 December 2024

	Notes	2024		2023	
		£	£	£	£
FIXED ASSETS					
Tangible assets	7		1,650,421		1,650,632
CURRENT ASSETS					
Stock		-		-	
Debtors	8	-		200	
Cash at bank and in hand		82,387		57,300	
		82,387		57,500	
CURRENT LIABILITIES					
Creditors due within one year	9	33,093		29,824	
NET CURRENT ASSETS/(LIABILITIES)					
			49,294		27,676
Creditors due after more than one year	10		(370,358)		(337,017)
TOTAL ASSETS LESS CURRENT LIABILITIES					
			1,329,357		1,341,291
FUNDS					
Unrestricted funds	11		721,439		736,041
Revaluation	11		600,000		600,000
Restricted funds	11		7,918		5,250
TOTAL FUNDS					
	11		1,329,357		1,341,291

The financial statements were approved by the Board of Trustees and were signed on its behalf by:

Wesley Norris - Trustee

Date:

Full Life Church & Christian Centre

Notes to the Financial Statements **For the year ended 31 December 2024**

1 ACCOUNTING POLICIES

Basis of accounting

The financial statements have been prepared under the historical cost convention and in accordance with the Financial Reporting Standard for Smaller Entities (effective January 2015) and with the Accounting and Reporting by: Statement of Recommended Practice (issued in January 2015).

Going concern

The financial statements have been prepared on a going concern basis. The Charity's activities are dependent upon the continued support of its key funders who have undertaken to provide such support for the foreseeable future.

If the going concern basis were not appropriate, adjustments would have to be made to reduce the value of assets to their recoverable values, to provide any further liabilities that may arise and reclassify fixed assets to current assets and long terms liabilities to current liabilities.

Cash flow statement

The trustees have taken advantage of the exemption in Financial Reporting Standard No. 102 from including a cash flow statement in the financial statement on the grounds that the charity is small.

Grants receivable

Revenue grants are credited to the Statement of Financial Activities in the year for which they are received.

Taxation

The company is a registered charity and its activities are not subject to taxation.

Tangible fixed assets

Tangible fixed assets are stated at cost less depreciation. Depreciation is provided at rates calculated to write off the cost less estimated residual value of each asset over its expected useful life, as follows;

Freehold Land and Buildings	Not depreciated
Fixtures, fittings and equipment	20% straight line basis

The freehold property of the charity was revalued by the trustees on 31st December 2007

Staff Costs and overhead expenses

Staff costs and overhead expenses are allocated to activities on the basis of time spent unless otherwise identified to a particular fund.

Full Life Church & Christian Centre

Notes to the Financial Statements - continued For the year ended 31 December 2024

Fund Accounting

Funds held by the charity are either:

Restricted funds - these are funds that can only be used for a particular restricted purposes within the objects of the charity. Restrictions arise when specified by the donor or when funds are raised for particular restricted purposes.

Unrestricted funds - these are funds which can be used at the organisation's discretion in accordance with the objects of the charity.

Designated funds - these funds comprise unrestricted funds that have been set aside by the trustees for restricted purposes.

2 Donations and legacies

	Unrestricted	Restricted	Total	Total
	£	£	2024	2023
	£	£	£	£
Donations of cash or similar	16,038	-	16,038	28,794
Donations in kind (Food Bank)	-	886	886	5,355
Gift Aid recoverable	68,661	-	68,661	70,185
	84,699	886	85,586	104,334

Charitable activities

	Unrestricted	Restricted	Total	Total
	£	£	2024	2023
	£	£	£	£
Charitable grants	17,890	-	17,890	13,227
Parent & Toddler	4,050	-	4,050	4,242
Rental income	14,847	-	14,847	13,776
Conference and centre	55,443	-	55,443	51,243
Other	741	-	741	1,007
Café	60,741	-	60,741	53,520
	153,712	-	153,712	137,015

Full Life Church & Christian Centre

Notes to the Financial Statements - continued

For the year ended 31 December 2024

3 RESOURCES EXPENDED - CHARITABLE ACTIVITIES

	Unrestricted	Restricted	Total	Total
			2024	2023
	£	£	£	£
Salaries and staff related costs	136,744	-	136,744	112,851
Training	918	-	918	552
Activities and Ministry expenses	6,499	-	6,499	9,189
Food bank costs	-	2,871	2,871	8,201
Café costs	20,930	-	20,930	25,123
Administration costs	6,145	-	6,145	6,038
Property costs	40,208	-	40,208	35,049
Finance costs	32,354	-	32,354	24,533
Catering	547	-	547	655
Sundry expenses	102	-	102	708
Depreciation	211	-	211	211
	244,658	2,871	247,529	223,110

4 RESOURCES EXPENDED - GOVERNANCE COSTS

	Unrestricted	Restricted	Total	Total
			2024	2023
	£	£	£	£
Legal and professional fees	3,050	-	3,050	-
Independent examiners fees	1,050	-	1,050	1,050
	4,100	-	4,100	1,050

Full Life Church & Christian Centre

Notes to the Financial Statements - continued For the year ended 31 December 2024

7 TANGIBLE FIXED ASSETS

	Freehold Property £	Fixtures & Fittings £	Office Equipment £	Total £
COST				
At 1st January 2024	1,650,000	82,675	7,359	1,740,034
Additions	-	-	-	-
At 31st December 2024	<u>1,650,000</u>	<u>82,675</u>	<u>7,359</u>	<u>1,740,034</u>
DEPRECIATION				
At 1st January 2024	-	82,043	7,359	89,402
Charge for year	-	211	-	211
At 31st December 2024	<u>-</u>	<u>82,254</u>	<u>7,359</u>	<u>89,613</u>
NET BOOK VALUE				
At 31st December 2024	<u>1,650,000</u>	<u>421</u>	<u>-</u>	<u>1,650,421</u>
At 31st December 2023	<u>1,650,000</u>	<u>632</u>	<u>-</u>	<u>1,650,632</u>

The trustees have elected not to comply with accounting standards and have not depreciated the freehold property.

The trustees maintain the building on an ongoing basis to ensure that no impairment to the condition of the building occurs.

The trustees acknowledge that any reduction in the value of the property would reduce the value in the unrestricted reserves.

The property was valued by the trustees on an open market value assuming vacant possession.

Full Life Church & Christian Centre

Notes to the Financial Statements - continued For the year ended 31 December 2024

5 NET INCOMING RESOURCES

Net incoming resources for the year is stated after charging:

	2024	2023
	£	£
Depreciation - owned assets	211	211

6 Information on Trustees and employees

The average number of employees during the year was 8 (2023: 7)

The total wage amount for all salaries was £102,603 - this covered 8 posts over the year one of which was a trustee who was not paid above £60,000

No employee received emoluments of more than £60,000.

The charity's key management is comprised of trustees.

Full Life Church & Christian Centre

**Notes to the Financial Statements - continued
For the year ended 31 December 2024**

8 DEBTORS: AMOUNTS FALLING DUE WITHIN ONE YEAR

	2024	2023
	£	£
Gift Aid recoverable	-	-
Trade debtors	-	200
	<u>-</u>	<u>200</u>

9 CREDITORS: AMOUNTS FALLING DUE WITHIN ONE YEAR

	2024	2023
	£	£
Trade creditors	4,042	773
Accrued expenses	1,200	1,200
Bank loans	27,851	27,851
	<u>33,093</u>	<u>29,824</u>

10 CREDITORS: AMOUNTS FALLING AFTER MORE THAN ONE YEAR

	2024	2023
	£	£
Bank loans	370,358	337,017
	<u>370,358</u>	<u>337,017</u>

The bank loan is secured by a first legal charge over the freehold property of the charity.

11 ANALYSIS OF NET ASSETS BETWEEN FUNDS

	Unrestricted Funds £	Restricted Funds £	Revaluation £	Total Funds £
Tangible fixed assets	1,050,421	-	600,000	1,650,421
Current assets	77,137	5,250		82,387
Current liabilities	(33,093)	-		(33,093)
Creditors due after > 1 year	(370,358)	-	-	(370,358)
	<u>724,107</u>	<u>5,250</u>	<u>600,000</u>	<u>1,329,357</u>

Full Life Church & Christian Centre

**Notes to the Financial Statements - continued
For the year ended 31 December 2024**

12 MOVEMENT IN FUNDS

	At 01.01.2024	Incoming Resources	Outgoing Resources	Transfers	At 31.12.2024
General funds	736,041	238,809	248,758	(4,653)	721,439
Designated funds					
Property fund	-	-	-	-	-
Redundancy fund	-	-	-	-	-
Total unrestricted funds	<u>736,041</u>	<u>238,809</u>	<u>248,758</u>	<u>(4,653)</u>	<u>721,439</u>
Building development	5,250	-	-	-	5,250
Food Bank	-	-	-	-	-
Total restricted funds	<u>5,250</u>	<u>-</u>	<u>-</u>	<u>-</u>	<u>5,250</u>
Revaluation	<u>600,000</u>	<u>-</u>	<u>-</u>	<u>-</u>	<u>600,000</u>
Total funds	<u><u>1,341,291</u></u>	<u><u>238,809</u></u>	<u><u>248,758</u></u>	<u><u>(4,653)</u></u>	<u><u>1,326,689</u></u>

FULL LIFE CHURCH (MALTBY)

England & Wales - Charity number 1052600

Accounts

Full Life Church & Christian Centre

Report and Financial Statements

For the year ended 31 December 2023

Registered Charity Number: 1052600

Full Life Church & Christian Centre

Contents of the Financial Statements
For the year ended 31 December 2023

	Page
Company Information	1
Trustees' Annual Report	2 - 10
Independent Examiners Report	11
Statement of Financial Activities	12
Balance Sheet	13
Notes to Financial Statements	14 - 20

Full Life Church & Christian Centre

Company Information

For the year ended 31 December 2023

REGISTERED OFFICE:

Full Life Church
Maltby
Rotherham
South Yorkshire
S66 8LF

TRUSTEES:

Pastor Paul Norris
Pastor Kevin Foster
Peter Wilson
Jim Raybould
Pastor Wesley Norris

INDEPENDENT EXAMINER:

Jon Lister FCCA
Enterprise Chartered Certified Accountants
8 Castlegate
Tickhill
Doncaster
DN11 9QU

BANKERS:

Natwest Bank Plc
Bawtry Road
Wickersley
Rotherham
S60 0JY

Full Life Church & Christian Centre

Trustees' Annual Report **For the year ended 31 December 2023**

The trustees have pleasure in submitting the report and financial statements for the year ended 31 December 2023.

Trustees' responsibilities statement

Charity law requires the trustees to prepare financial statements for each financial year which give a true and fair view of the state of affairs of the charity and of the incoming resources and application of resources, including the income and expenditure, of the charity for the year.

In preparing the financial statements, the trustees are required to:

- select suitable accounting policies and then apply them consistently;
- observe the methods and principles in the Charities SORP;
- make judgements and estimates that are reasonable and prudent;
- state whether applicable UK Accounting Standards have been followed, subject to any material departures disclosed and explained in the financial statement;
- prepare the financial statements on the going concern basis unless it is inappropriate to presume that the charitable company will continue in operation.

The trustees are responsible for keeping adequate accounting records that disclose with reasonable accuracy at any time the financial position of the charity and enable them to ensure that the financial statements comply with the Charities Act 2011. They are also responsible for safeguarding the assets of the charity and hence for taking reasonable steps for the prevention and detection of fraud and other irregularities.

Structure, governance and management

The trustees have responsibility to direct the charity's affairs in such a way as to promote the Objects.

Day to day management

The day to day management of the charity is carried out by the Senior Minister, responsible to the Board of Trustees made up of the trustees of the company.

General meetings are held monthly to discuss matters and for decision making. Meetings are carried out in line with the Governing Document of the charity.

Full Life Church & Christian Centre

Report of the Directors (including the Trustees' Report) - Continued **For the year ended 31 December 2023**

Structure, governance and management continued

Recruitment and training of trustees

Trustees are recruited based on their knowledge and experience in the services the charity provides to meet its objectives.

Trustee training is given before and during the trustee term.

New members of the Church Council are nominated by the Senior Minister and appointed by the Church Council.

Risk management

The board of trustees have overall responsibility for ensuring that the charity has appropriate systems of controls, financial or otherwise. They are also responsible for keeping proper accounting records, for safeguarding the assets of the charity and for taking reasonable steps for the prevention and detection of fraud and other irregularities and to provide reasonable assurance that:

- The charity is operating efficiently and effectively
- The assets are safeguarded against unauthorised use or disposition
- Proper records are maintained and financial information used within the charity reliable
- The charity complies with relevant laws and regulations

Risk review

The trustees have conducted a review of the major risks to which the charity is exposed and appropriate systems have been established to mitigate those risks. Significant external risks to funding have led to the development and implementation of a strategic plan. This will allow for the re-direction of funding and some activities.

Internal risks are minimised by the implementation of procedures for authorisation of all transactions and projects to ensure consistent quality of delivery for all operational aspects of the charity. These procedures are constantly reviewed to ensure that they still meet the needs of the charity.

Objectives and activities

Full Life Church exists to promote the Christian Faith and serve the wider community through Church services, outreach and community projects.

Reserves policy

The trustees have determined that the charity should aim to hold unrestricted cash of no less than £50,000 (which equates to approximately 3 months of unrestricted expenditure so that the charity could continue to operate should income and expenditure vary adversely. At the year end date, the charity held unrestricted cash in excess of this amount.

Full Life Church & Christian Centre

Report of the Directors (including the Trustees' Report) - continued For the year ended 31 December 2023

Full Life Church Annual Report for 2023/24

The period of 2023/24 has again been a time of development and progress. All of this has reflected our vision, mission and values statements:

Vision:

To grow a significant and dynamic Community Church, that serves Maltby, and the communities within South Yorkshire and surrounding counties.

Mission Statement:

Our mission statement continues to serve us well; **Impact - Serve - Support**

- **Impact and Influence our Community for good and for God**
- **To Serve Others in our region and Nation**
- **To Support Mission Partners overseas Values:** We have continued to embody our values in ministry and ethos:

Values: We have continued to embody our values in ministry and ethos:

- Being passionate for God and keeping **Christ at the centre of everything we do**
- Keeping a **Christ-like attitude** and servant spirit in the way we serve God and each other
- Being a Church that is built upon **sound, relevant, practical and inspirational Christian** teaching & inspiring, contemporary and vibrant worship
- **Empowering people** to rise towards their potential
- To be a **united and purposeful people**, committed to pursuing excellence in the way we serve God, each other, and our community
- To be driven by **purpose not programme**, and by our relationship with Jesus

We have continued to outwork these by seeking to be a Church that:

- **Warmly Welcomes** new friends and old
- **Authentically Worships** the Living Saviour
- **Carefully Holds** the truths of God's Word
- **Creatively Communicates** fullness of life in Jesus
- **Enthusiastically Encourages** those around us
- **Healthily Honours** those who serve and lead us
- **Generously Gives** to support ministries and missions
- **Regularly Gathers** Sundays and midweek
- **Willingly Serves** others in fellowship and community
- **Persistently Prays** "Your Kingdom Come!

Full Life Church & Christian Centre

Report of the Directors (including the Trustees' Report) - continued For the year ended 31 December 2023

Our current aims over the period of 2024 and into 2025 are being constantly re-visited as we continue to grow and development, and because our capacity for growth continues.

We have been able to conduct ongoing staff and trustee mentoring. We have also been able to grow our volunteer base to 50 - 60 volunteers within our organisation.

Current short and mid term aims as we continued through 2023 and in to 2024 have been to:

- **Continue to provide a welcoming, nurturing & vibrant Church with meaningful friendships**
- **Increase and manage the diversity of ways we serve our Community**

Main Activities During the Past Year We have continued to **Serve Others Locally Through:**

- Our **Church**. Our gatherings have been more diverse, more accessible, and all age for everyone attending, and in fact this has facilitated increase. We have held around 175 regular services and small groups, throughout the year, including Sunday mornings Service, mid-week Cafe Church, Alpha courses, baptisms, & funerals. Consequently we have been able to offer improved pastoral care, and support to Church attendees, and members of our community.
- Our **Family/Parent and Toddlers Playgroups** are currently open 4 times each week so far connecting with approximately 90+ families on a regular basis
- Our Sunday & mid week **Life Kids' groups** have continued to run weekly, serving over 80 different children
- Our **Cove Coffee House**, complete with quiet and **sensory garden** open 5 full days per week, and serve hundreds of people each week. Every day we seek to support and address the issues of loneliness and social isolation, depression, loss of community contact, and the need for people to find a place of "Refuge, Peace, and Shelter
- Our **Community Day Facilities** - We continue to host numerous groups from our community that enrich peoples!# lives and facilitate community involvement
- Our **Social Housing** continue to provide supported and safe housing for people who may have experienced loss, or life changing health issues

As a consequence, our various activities and outreach projects facilitate around 1,200 visits per week from around 1,000 people. This means that we can realistically say, as many do, that Full Life Church is very much a **hub within our immediate and surrounding communities**, many of which continue to experience significant spiritual searching, the challenges of social isolation, food poverty, mental health challenges and social breakdown.

Report of the Directors (including the Trustees' Report) - continued
For the year ended 31 December 2023

We have continued to **Serve Others** in our Region and Nation by continuing to serve other Churches and ministries through our:

- **Residential Training and Mission** facility which still is able to facilitate groups from around the world
- Providing **Leadership Training programmes** and pastoral care to other Churches, and leaders as requested

We consider that we are **Supporting Mission Partners** overseas by:

- Continuing to support our Mission Partners in **Asturias, Spain**
- Facilitating the **training** of people who are moving on to work overseas

The Main Areas of Development over the last year have been:

- **Church Growth** - The continued growth of our Church fellowship. This has required work to integrate new friends, strengthen peoples' faith, and encourage the concept of serving others
- **Children's Ministry** - Significant growth in our children's ministry, with groups for different ages
- **Youth Ministry** - The restarting of our monthly Youth activities and meetings
- **Life Groups** - we have introduced a range of Life Groups - small groups which meet fortnightly around the area . These facilitate pastoral care and teaching. We use our own pre-recorded video material to support Life Group facilitators and group interaction
- **Food-Bank** - Significant growth in our ministry to combat food poverty, vulnerability and homelessness through our Trussell Trust registered Food-bank, and our Warm Hub which is open on the same days
- **Restore Furniture Project** - The emerging of a new project. This has been our response to a growing need within our community, for families without beds, and other basic furniture to facilitate family life. We plan to develop this ministry project and have outlined the concept 'Restore' Furniture - restoring not only used furniture to be re-used, but restoring peoples' sense of dignity by helping to improve their living spaces
- **Residential Training** - An increase in the use of Residential Centre for Christian groups and individuals from the UK and overseas, who are training to work with the PAIS organisation, in Youth and School settings around the UK
 - **Facilitating Community Support** - We now facilitate SYHA project workers in their work to support our community

Full Life Church & Christian Centre

Report of the Directors (including the Trustees' Report) - continued

For the year ended 31 December 2023

Leadership Restructuring

Towards the end of 2023, our Church also passed in to, and through a significant period of re-structuring.

- In November our Pastors' Team saw the transitioning of our Senior role. Our Senior Leaders, Pastors Paul and Wesley have changed roles. Pastor Wesley has accepted the role of Senior Pastor, and after 41 years of continually leading our Church as Senior Pastor, Pastor Paul will be supporting Wesley in his new role, but still as Associate / Team Pastor. This has released Pastor Paul to support other Pastors, specifically across Yorkshire, but other areas of the UK too.

We pray that Pastor Wesley will know continued blessing in life and ministry, along with Naomi who also serves us in heading up various ministries, as they continue to facilitate our Church's journey in to the coming years

A Snap Shot of Some of our Community Work

- Our **Food Bank and Hampers projects** has given away around 45,000 meals over the last 12 months, supporting hundreds of families challenged with food poverty. Our volunteers put together and distributed dozens of Christmas hampers throughout in the week before Christmas, and another 100 hampers throughout autumn 2023 and spring 2024, so that families could benefit from reduced pressure over the period. Special thanks to the employees of Royal Mail for their kind support, SYFAB, and Trussell Trust.



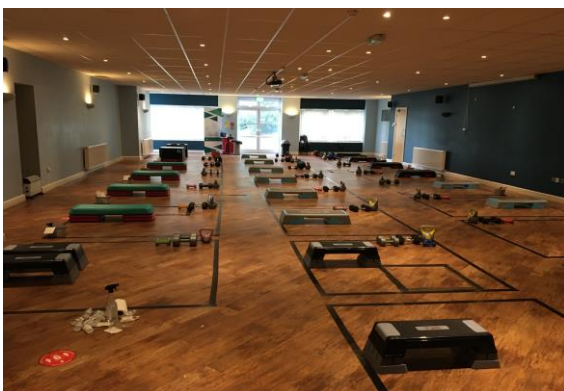
Full Life Church & Christian Centre

Report of the Directors (including the Trustees' Report) - continued
For the year ended 31 December 2023

Our **Olive Suite** provide an ideal setting for educational groups and courses. We facilitated a wide variety of community courses and groups including sewing classes, flower arranging, crafts and performing arts



Our **Living Well and Conference Suite** provide excellent space for both adults and people young people who attend groups for keeping fit, and living well, physical exercise, and developing performing arts skills.



Full Life Church & Christian Centre

Report of the Directors (including the Trustees' Report) - continued For the year ended 31 December 2023

Our **Cove Coffee House**, complete with quiet and **sensory garden** open 5 full days per week, and serve hundreds of people each week. Every day we seek to support and address the issues of loneliness and social isolation, depression, loss of community contact, and the need for people to find a place of "Refuge, Peace, and Shelter



A Finance Remark

During the 2023 / 24 period we have been blessed by the support in giving, and volunteering we have received from various donors.

We are grateful for:

- Everyone who practiced the concept of biblical giving
- The Gift Aid Schemes
- Special Offerings
- Help in applying for grants
- Grant funding Organisations
- Effective income bearing ministry departments

Regular giving is at the heart of our donations, and this finances so much of what we are able to do.

Celebrations

This year we celebrated with families dedicating their babies, and the birthday of our oldest member who was 101 years old - she has served our Church for over 90 years. We can certainly say that our Church age range is from 0 to over 100.

Report of the Directors (including the Trustees' Report) - continued
For the year ended 31 December 2023

Special Thanks

Special thanks are expressed this year to the Trustees who have agreed to stand for the current period, and support our Pastors Paul and Wesley.

Gratitude is expressed to all those who have shared the other responsibilities of key roles over the past year.

We have been particularly encouraged by the support of various individuals and organisations that have helped us in efforts to support our community.

Not least of all, special thanks also go to the following organisations for their generous support through the year:

- Full Life Church members
- Tesco Supermarket For Food Bank & Hampers
- Maltby Academy Lilly Hall Academy School
- Maltby Manor Academy School
- Abbeywood School (Witherslack Group)
- Wickersley School Sports College Year 12
- FareShare For Food Bank & Hampers
- Royal Mail Employees For Food Bank & Hampers
- Cleggs Construction Ltd
- Galliford - Try Cooperative Group
- Metro Swim Club
- Stafforce/Nicholas Associates
- Scouts Community Group, Edward Dunn Centre
- The Community Fund
- Trussell Trust
- South Yorkshire Housing Authority

And numerous other valued, generous individual and organisational donors for special projects

Respectfully Submitted

Paul Norris CMgr FCMI
Team Pastor, and Trustee
Full Life Church, Maltby



Independent Examiners Report to the Trustees of
Full Life Church & Christian Centre
For the year ended 31 December 2023

We report on the accounts for the year ended 31 December 2023 set out on pages 12 to 20.

Retrospective responsibilities of trustees and examiner

The trustees are responsible for the preparation of the accounts in accordance with the requirements of the Charities Act 2011 (The Act). The trustees consider that an audit is not required for this year under section 145(1) of the Charities Act 2011 and that an independent examination is needed.

Having satisfied myself that the charity is not subject to audit under Charity Law and is eligible for independent examination, it is my responsibility to;

- examine the accounts under section 145 of the Charities Act 2011;
- to follow the procedures laid down in the general directions given by the Charity Commission under section 145(5)(b) of the Charities Act 2011; and
- to state whether particular matters have come to my attention.

Basis of independent examiner's report

My examination was carried out in accordance with the general directions given by the Charity Commission. An examination includes a review of the accounting records kept by the charity and a comparison of the accounts presented with those records. It also includes consideration of any unusual items or disclosures in the accounts and seeking explanations from you as trustees concerning any such matters. The procedures undertaken do not provide all the evidence that would be required in an audit and consequently no opinion is given as to whether the accounts present a 'true and fair view' and the report is limited to those matters set out in the statement below.

Independent examiner's statement

In connection with my examination, no matter has come to my attention:

- (1) accounting records were not kept in respect of the Charity as required by section 130 of The Act; or
- (2) the accounts do not accord with those records; or
- (3) the accounts do not comply with the applicable requirements concerning form and content of accounts set out in the Charities (Accounts and Reports) Regulations 2008 other than any requirement that the accounts give a 'true and fair' view which is not a matter considered as part of an independent examination

I have no concerns and have come across no other matters in connection with the examination to which attention should be drawn in this report in order to enable a proper understanding of the accounts to be reached.

Jon Lister FCCA

Enterprise Accountancy Services Limited

8 Castlegate

Tickhill

Doncaster

DN11 9QU

Dated:

Full Life Church & Christian Centre

Statement of Financial Activities (including Income & Expenditure Account) For the year ended 31 December 2023

		Unrestricted Funds 2023 £	Restricted Funds 2023 £	Total Funds 2023 £	Total Funds 2022 £
	Notes				
INCOMING RESOURCES					
COVID Grants		-		-	-
Incoming resources from charitable activities:					
Donations and legacies	2	98,979	5,355	104,334	113,838
Charitable activities:	3	137,015	-	137,015	120,875
Investment income		216		216	32
TOTAL INCOMING RESOURCES		236,210	5,355	241,565	234,745
RESOURCES EXPENDED					
Charitable activities	3	214,909	8,201	223,110	208,299
Governance costs	4	1,050	-	1,050	2,034
TOTAL RESOURCES EXPENDED		215,959	8,201	224,160	210,333
NET INCOMING RESOURCES	5	20,251	(2,846)	17,405	24,412
TRANSFER		(4,653)	4,653	-	-
Total funds brought forward		720,443	3,443	723,886	699,474
TOTAL FUNDS CARRIED FORWARD		736,041	5,250	741,291	723,886

The statement of financial activities includes all gains and losses in the year. All incoming resources and resources expended derive from continuing activities.

Full Life Church & Christian Centre
Charity number: 1052600
Balance Sheet as at 31 December 2023

	Notes	2023		2022	
		£	£	£	£
FIXED ASSETS					
Tangible assets	7		1,650,632		1,650,843
CURRENT ASSETS					
Stock		-		-	
Debtors	8	200		-	
Cash at bank and in hand		57,300		73,374	
		<u>57,500</u>		<u>73,374</u>	
CURRENT LIABILITIES					
Creditors due within one year	9	<u>29,824</u>		<u>31,302</u>	
NET CURRENT ASSETS/(LIABILITIES)					
			<u>27,676</u>		<u>42,072</u>
Creditors due after more than one year	10		(337,017)		(369,029)
TOTAL ASSETS LESS CURRENT LIABILITIES					
			<u><u>1,341,291</u></u>		<u><u>1,323,886</u></u>
FUNDS					
Unrestricted funds	11		736,041		720,443
Revaluation	11		600,000		600,000
Restricted funds	11		<u>5,250</u>		<u>3,443</u>
TOTAL FUNDS					
	11		<u><u>1,341,291</u></u>		<u><u>1,323,886</u></u>

The financial statements were approved by the Board of Trustees and were signed on its behalf by:

Wesley Norris - Trustee

Date:

Full Life Church & Christian Centre

Notes to the Financial Statements **For the year ended 31 December 2023**

1 ACCOUNTING POLICIES

Basis of accounting

The financial statements have been prepared under the historical cost convention and in accordance with the Financial Reporting Standard for Smaller Entities (effective January 2015) and with the Accounting and Reporting by: Statement of Recommended Practice (issued in January 2015).

Going concern

The financial statements have been prepared on a going concern basis. The Charity's activities are dependent upon the continued support of its key funders who have undertaken to provide such support for the foreseeable future.

If the going concern basis were not appropriate, adjustments would have to be made to reduce the value of assets to their recoverable values, to provide any further liabilities that may arise and reclassify fixed assets to current assets and long terms liabilities to current liabilities.

Cash flow statement

The trustees have taken advantage of the exemption in Financial Reporting Standard No. 102 from including a cash flow statement in the financial statement on the grounds that the charity is small.

Grants receivable

Revenue grants are credited to the Statement of Financial Activities in the year for which they are received.

Taxation

The company is a registered charity and its activities are not subject to taxation.

Tangible fixed assets

Tangible fixed assets are stated at cost less depreciation. Depreciation is provided at rates calculated to write off the cost less estimated residual value of each asset over its expected useful life, as follows;

Freehold Land and Buildings	Not depreciated
Fixtures, fittings and equipment	20% straight line basis

The freehold property of the charity was revalued by the trustees on 31st December 2007

Staff Costs and overhead expenses

Staff costs and overhead expenses are allocated to activities on the basis of time spent unless otherwise identified to a particular fund.

Full Life Church & Christian Centre

Notes to the Financial Statements - continued

For the year ended 31 December 2023

Fund Accounting

Funds held by the charity are either:

Restricted funds - these are funds that can only be used for a particular restricted purposes within the objects of the charity. Restrictions arise when specified by the donor or when funds are raised for particular restricted purposes.

Unrestricted funds - these are funds which can be used at the organisation's discretion in accordance with the objects of the charity.

Designated funds - these funds comprise unrestricted funds that have been set aside by the trustees for restricted purposes.

2 Donations and legacies

	Unrestricted	Restricted	Total	Total
	£	£	2023	2022
	£	£	£	£
Donations of cash or similar	28,794		28,794	25,132
Donations in kind (Food Bank)		5,355	5,355	1,457
Gift Aid recoverable	70,185		70,185	87,250
	98,979	5,355	104,334	113,839

Charitable activities

	Unrestricted	Restricted	Total	Total
	£	£	2023	2022
	£	£	£	£
Charitable grants	13,227		13,227	9,962
Parent & Toddler	4,242		4,242	4,380
Rental income	13,776		13,776	13,167
Conference and centre	51,243		51,243	37,465
Other	1,008		1,008	8,164
Café	53,520		53,520	47,737
	137,015	-	137,015	120,875

Full Life Church & Christian Centre

Notes to the Financial Statements - continued For the year ended 31 December 2023

3 RESOURCES EXPENDED - CHARITABLE ACTIVITIES

	Unrestricted	Restricted	Total 2023	Total 2022
	£	£	£	£
Salaries and staff related costs	112,851		112,851	103,546
Training	552		552	498
Activities and Ministry expenses	9,189		9,189	5,431
Food bank costs	-	8,201	8,201	4,236
Café costs	25,123		25,123	18,299
Administration costs	6,037		6,037	14,386
Property costs	35,049		35,049	42,637
Finance costs	24,533		24,533	18,537
Catering	655		655	159
Sundry expenses	710		710	290
Depreciation	211		211	280
	214,909	8,201	223,110	208,299

4 RESOURCES EXPENDED - GOVERNANCE COSTS

	Unrestricted	Restricted	Total 2023	Total 2022
	£	£	£	£
Legal and professional fees	-	-	-	1,044
Independent examiners fees	1,050	-	1,050	990
	1,050	-	1,050	2,034

Full Life Church & Christian Centre

**Notes to the Financial Statements - continued
For the year ended 31 December 2023**

7 TANGIBLE FIXED ASSETS

	Freehold Property £	Fixtures & Fittings £	Office Equipment £	Total £
COST				
At 1st January 2023	1,650,000	82,675	7,359	1,740,034
Additions	-	-	-	-
At 31st December 2023	<u>1,650,000</u>	<u>82,675</u>	<u>7,359</u>	<u>1,740,034</u>
DEPRECIATION				
At 1st January 2023	-	81,832	7,359	89,191
Charge for year	-	211	-	211
At 31st December 2023	<u>-</u>	<u>82,043</u>	<u>7,359</u>	<u>89,402</u>
NET BOOK VALUE				
At 31st December 2023	<u>1,650,000</u>	<u>632</u>	<u>-</u>	<u>1,650,632</u>
At 31st December 2022	<u>1,650,000</u>	<u>843</u>	<u>-</u>	<u>1,650,843</u>

The trustees have elected not to comply with accounting standards and have not depreciated the freehold property.

The trustees maintain the building on an ongoing basis to ensure that no impairment to the condition of the building occurs.

The trustees acknowledge that any reduction in the value of the property would reduce the value in the unrestricted reserves.

The property was valued by the trustees on an open market value assuming vacant possession.

Full Life Church & Christian Centre

**Notes to the Financial Statements - continued
For the year ended 31 December 2023**

5 NET INCOMING RESOURCES

Net incoming resources for the year is stated after charging:

	2023	2022
	£	£
Depreciation - owned assets	211	280

6 Information on Trustees and employees

The average number of employees during the year was 8 (2023: 7)

The total wage amount for all salaries was £112,851 - this covered 8 posts over the year
Two of which were trustees, as permitted by the Governing Document in respect
of their services to Church for pastoral work, but not as trustees

No employee received emoluments of more than £60,000.

The Charity's key management is comprised of trustees.

Full Life Church & Christian Centre

**Notes to the Financial Statements - continued
For the year ended 31 December 2023**

8 DEBTORS: AMOUNTS FALLING DUE WITHIN ONE YEAR

	2023	2022
	£	£
Gift Aid recoverable	-	-
Trade debtors	200	-
	200	-

9 CREDITORS: AMOUNTS FALLING DUE WITHIN ONE YEAR

	2023	2022
	£	£
Trade creditors	773	2,252
Accrued expenses	1,200	1,200
Bank loans	27,851	27,851
	29,824	31,303

10 CREDITORS: AMOUNTS FALLING AFTER MORE THAN ONE YEAR

	2023	2022
	£	£
Bank loans	337,017	369,029
	337,017	369,029

The bank loan is secured by a first legal charge over the freehold property of the charity.

11 ANALYSIS OF NET ASSETS BETWEEN FUNDS

	Unrestricted Funds	Restricted Funds	Revaluation	Total Funds
	£	£	£	£
Tangible fixed assets	1,050,632	-	600,000	1,650,632
Current assets	52,250	5,250		57,500
Current liabilities	(29,824)	-		(29,824)
Creditors due after > 1 year	(337,017)	-	-	(337,017)
Net assets at 31st December 2023	736,041	5,250	600,000	1,341,291

Full Life Church & Christian Centre

Notes to the Financial Statements - continued
For the year ended 31 December 2023

12 MOVEMENT IN FUNDS

	At 01.01.2023	Incoming Resources	Outgoing Resources	Transfers	At 31.12.2023
General funds	720,443	236,210	215,959	(4,653)	736,041
Designated funds					
Property fund	-	-	-	-	-
Redundancy fund	-	-	-	-	-
Total unrestricted funds	<u>720,443</u>	<u>236,210</u>	<u>215,959</u>	<u>(4,653)</u>	<u>736,041</u>
Building development	5,250	-	-	-	5,250
Food Bank	(1,807)	5,355	8,201	4,653	-
Total restricted funds	<u>3,443</u>	<u>5,355</u>	<u>8,201</u>	<u>4,653</u>	<u>5,250</u>
Revaluation	<u>600,000</u>	<u>-</u>	<u>-</u>	<u>-</u>	<u>600,000</u>
Total funds	<u><u>1,323,886</u></u>	<u><u>241,565</u></u>	<u><u>224,160</u></u>	<u><u>-</u></u>	<u><u>1,341,291</u></u>

FULL LIFE CHURCH (MALTBY)

England & Wales - Charity number 1052600

Accounts

Full Life Church & Christian Centre

Report and Financial Statements

For the year ended 31 December 2022

Registered Charity Number: 1052600

Full Life Church & Christian Centre

Contents of the Financial Statements
For the year ended 31 December 2022

	Page
Company Information	1
Trustees' Annual Report	2 - 9
Independent Examiners Report	10
Statement of Financial Activities	11
Balance Sheet	12
Notes to Financial Statements	13 - 19

Full Life Church & Christian Centre

Company Information

For the year ended 31 December 2022

REGISTERED OFFICE:

Full Life Church
Maltby
Rotherham
South Yorkshire
S66 8LF

TRUSTEES:

Pastor Paul Norris
Pastor Kevin Foster
Peter Wilson
Jim Raybould
Pastor Wesley Norris

INDEPENDENT EXAMINER:

Jon Lister FCCA
Enterprise Chartered Certified Accountants
8 Castlegate
Tickhill
Doncaster
DN11 9QU

BANKERS:

Natwest Bank Plc
Bawtry Road
Wickersley
Rotherham
S60 0JY

Full Life Church & Christian Centre

Trustees' Annual Report **For the year ended 31 December 2022**

The trustees have pleasure in submitting the report and financial statements for the year ended 31 December 2022.

Trustees' responsibilities statement

Charity law requires the trustees to prepare financial statements for each financial year which give a true and fair view of the state of affairs of the charity and of the incoming resources and application of resources, including the income and expenditure, of the charity for the year.

In preparing the financial statements, the trustees are required to:

- select suitable accounting policies and then apply them consistently;
- observe the methods and principles in the Charities SORP;
- make judgements and estimates that are reasonable and prudent;
- state whether applicable UK Accounting Standards have been followed, subject to any material departures disclosed and explained in the financial statement;
- prepare the financial statements on the going concern basis unless it is inappropriate to presume that the charitable company will continue in operation.

The trustees are responsible for keeping adequate accounting records that disclose with reasonable accuracy at any time the financial position of the charity and enable them to ensure that the financial statements comply with the Charities Act 2011. They are also responsible for safeguarding the assets of the charity and hence for taking reasonable steps for the prevention and detection of fraud and other irregularities.

Structure, governance and management

The trustees have responsibility to direct the charity's affairs in such a way as to promote the Objects.

Day to day management

The day to day management of the charity is carried out by the Senior Minister, responsible to the Board of Trustees made up of the trustees of the company.

General meetings are held monthly to discuss matters and for decision making. Meetings are carried out in line with the Governing Document of the charity.

Full Life Church & Christian Centre

Report of the Directors (including the Trustees' Report) - Continued **For the year ended 31 December 2022**

Structure, governance and management continued

Recruitment and training of trustees

Trustees are recruited based on their knowledge and experience in the services the charity provides to meet its objectives.

Trustee training is given before and during the trustee term.

New members of the Church Council are nominated by the Senior Minister and appointed by the Church Council.

Risk management

The board of trustees have overall responsibility for ensuring that the charity has appropriate systems of controls, financial or otherwise. They are also responsible for keeping proper accounting records, for safeguarding the assets of the charity and for taking reasonable steps for the prevention and detection of fraud and other irregularities and to provide reasonable assurance that:

- The charity is operating efficiently and effectively
- The assets are safeguarded against unauthorised use or disposition
- Proper records are maintained and financial information used within the charity reliable
- The charity complies with relevant laws and regulations

Risk review

The trustees have conducted a review of the major risks to which the charity is exposed and appropriate systems have been established to mitigate those risks. Significant external risks to funding have led to the development and implementation of a strategic plan. This will allow for the re-direction of funding and some activities.

Internal risks are minimised by the implementation of procedures for authorisation of all transactions and projects to ensure consistent quality of delivery for all operational aspects of the charity. These procedures are constantly reviewed to ensure that they still meet the needs of the charity.

Objectives and activities

Full Life Church exists to promote the Christian Faith and serve the wider community through Church services, outreach and community projects.

Reserves policy

The trustees have determined that the charity should aim to hold unrestricted cash of no less than £50,000 (which equates to approximately 3 months of unrestricted expenditure so that the charity could continue to operate should income and expenditure vary adversely. At the year end date, the charity held unrestricted cash in excess of this amount.

Full Life Church & Christian Centre

Report of the Directors (including the Trustees' Report) - continued **For the year ended 31 December 2022**

Full Life Church Annual Report for 2022

The period of 2022/23 has again been a time of development and progress. We have very evidently made good recovery after the pandemic in attendance, and re-launching our ministries, and consequently serving our Community too.

All of this has reflected our vision, mission and values statements:

Vision:

To grow a significant and dynamic Community Church, that serves Maltby, and the surrounding communities within South Yorkshire and North Notts.

Mission Statement:

Our mission statement continues to serve us well;

Impact - Serve - Support

- **Impact and Influence our Community for good and for God**
- **To Serve Others in our region and Nation**
- **To Support Mission Partners overseas**

Values:

We have continued to embody our values in ministry and ethos:

- Being passionate for God and keeping Christ at the centre of everything we do.
- Keeping a Christ-like attitude and servant spirit in the way we serve God and each other.
- Being a Church that is built upon sound, relevant, practical and inspirational Christian teaching & inspiring, contemporary and vibrant worship.
- Empowering people to rise towards their potential.
- That we are a united and purposeful people, committed to pursuing excellence in the way we serve God, each other and our community.
- That we are driven by purpose not programme, and by our relationship with Jesus

Full Life Church & Christian Centre

Report of the Directors (including the Trustees' Report) - continued For the year ended 31 December 2022

We have continued to outwork these by seeking to be a Church that:

Warmly Welcomes new friends and old
Authentically Worships the Living Saviour
Carefully Holds the truths of God's Word
Creatively Communicates fullness of life in Jesus
Enthusiastically Encourages those around us
Healthily Honours those who serve and lead us
Generously Gives to support ministries and missions
Regularly Gathers Sundays and midweek
Willingly Serves others in fellowship and community
Persistently Prays 'Your Kingdom Come'

Our current aims over the period of 2023 and into 2024 have also been recently re-visited after a period of growth and development, and because our capacity for growth continues.

Current short and mid term aims as we continued through 2023 have been to again:

- **Create Community**
- **Build Bridges**
- **Develop Disciples and**
- **Mobilise our Mission**

We are pleased to report that we have seen:

- The spiritual and relational life of our Church fellowship has been developing by integrating new friends, strengthening peoples' faith, encouraging the concept of serving others
- A continuation to develop our ministry to combat food poverty, vulnerability and homelessness
- A re-launching and developing again our ministry to children, young people, and families
- An increase in the use and availability of our facilities for education and training, skills development, and activities that facilitate the sense of well being and living healthily within our community, and other areas of personal development, as well as activities that facilitate Christian mission

Full Life Church & Christian Centre

Report of the Directors (including the Trustees' Report) - continued For the year ended 31 December 2022

Main Activities During the Past Year

We have held around 100 regular services including Sunday mornings Service, mid week Cafe Church. Consequently we have been able to offer pastoral care and support to Church attendees and members of our community, and also re establish various activities as legalities allowed.

At the time of writing this report in 2023:

The support in giving and volunteering we have received has enabled us to see:

- Our **Church** coming back together and growing again. Our gatherings have been more diverse, more accessible, and all age for everyone attending, and in fact this has facilitated increase.
- Our **Family / Parent and Toddlers Playgroups** currently operate 4 times each week so far connecting with approximately 80 - 90 families
- Our mid week **Life Kids group** has been relaunched serving around 40 different children
- Our **Cove Coffee House** complete with quiet and sensory garden open 5 full days per week, and serve hundreds of people each week. Every day we seek to support and address the issues of loneliness and social isolation, depression, loss of community contact, and the need for people to find a place of 'Refuge, Peace, and Shelter



Full Life Church & Christian Centre

Report of the Directors (including the Trustees' Report) - continued
For the year ended 31 December 2022

• Our **Food Bank and Hampers projects** has given away around 50,000 meals over the last 12 months, supporting hundreds of families challenged with food poverty. Our volunteers put together and distributed dozens of Christmas hampers throughout in the week before Christmas, and another 100 hampers throughout autumn 2022 and spring 2023, so that families could benefit from reduced pressure over the period. Special thanks to the employees of Royal Mail for their kind support and SYFAB, and Trussel Trust.

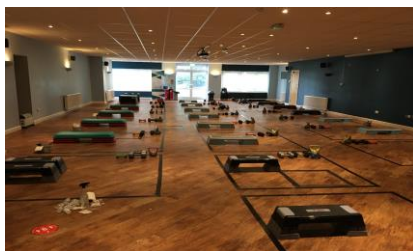
• Our forward planning in 2021 was proved to be providential - we re-located and re-developed our food bank ministry within our premises to give us an improved space to organise food parcels and position ourselves for growth and diversity, in anticipation of the potential effects of changes in the labour market ad social structures.



• Our Olive Suite provide an ideal setting for educational groups and courses. We facilitated a wide variety of community courses and groups including sewing classes, flower arranging, crafts and performing arts



• Our **Living Well and Conference Suite** provide excellent space for both adults and people young people who attend groups for keeping fit, and living well, physical exercise, and developing performing arts skills.



Full Life Church & Christian Centre

Report of the Directors (including the Trustees' Report) - continued For the year ended 31 December 2022

- Our **Social Housing** continue to provide supported and safe housing for people who may have experienced loss, or life changing health issues

We have continued to **Serve Others** in our Region and Nation by continuing to serve other Churches and ministries through our:

- **Day Conference** Centre. We now again host numerous groups from our community that enrich peoples' lives and facilitate community involvement
- **Residential Retreat and Mission** facility which still is able to facilitate groups from around the world
- Providing **Leadership Training programmes** to other Churches and leaders as requested

We consider that we are **Supporting Mission Partners** overseas by:

- Continuing to support our Mission Partners in Asturias, Spain
- Giving to emergency first aid projects in Ukraine

Our various activities and outreach projects facilitate around 1,200 visits per week from around 1,000 people. This means that we can realistically say, as many do, that Full Life Church is very much a hub within our community, and surrounding communities, many of which continue to experience the significant social challenges of social isolation, food poverty, mental health challenges and social breakdown.

We have been able to conduct ongoing staff and trustee mentoring. We have also been able to grow our volunteer base to 40 - 50 volunteers within our organisation.

A Finance Remark

During the 2022 / 23 period we have been blessed by:

- Everyone who practiced the concept of biblical giving
- The Gift Aid Schemes
- Special Offerings
- Help in applying for grants
- Effective income bearing ministry departments

Regular giving is at the heart of our sponsorship, and this finances so much of what we are able to do.

Full Life Church & Christian Centre

Report of the Directors (including the Trustees' Report) - continued For the year ended 31 December 2022

Celebrations

This year we celebrated the birthday of our oldest member who was 100 years old, and who has served our Church for 90 years.

Special Thanks

Special thanks are expressed this year to the Trustees who have agreed to stand for the current period, and support our Pastors Paul and Wesley.

Gratitude is expressed to all those who have shared the other responsibilities of leadership over the past year.

Special thanks also go to the following organisations for their generous support through the year:

Tesco Supermarket For Food Bank and Hampers
All Maltby Schools For Food Bank and Hampers
Fair Share For Food Bank and Hampers
Royal Mail Employees For Food Bank and Hampers
SYFAB
Coalfields Regeneration Trust
Trussel Trust
Other generous donors for special projects

Respectfully Submitted

Paul Norris CMgr FCMI
Senior Pastor
Full Life Church, Maltby



On Behalf of the Board of Trustees:

Paul Norris - Chair
Date:

**Independent Examiners Report to the Trustees of
Full Life Church & Christian Centre
For the year ended 31 December 2022**

We report on the accounts for the year ended 31 December 2022 set out on pages 10 to 19.

Retrospective responsibilities of trustees and examiner

The trustees are responsible for the preparation of the accounts in accordance with the requirements of the Charities Act 2011 (The Act). The trustees consider that an audit is not required for this year under section 145(1) of the Charities Act 2011 and that an independent examination is needed.

Having satisfied myself that the charity is not subject to audit under Charity Law and is eligible for independent examination, it is my responsibility to;

- examine the accounts under section 145 of the Charities Act 2011;
- to follow the procedures laid down in the general directions given by the Charity Commission under section 145(5)(b) of the Charities Act 2011; and
- to state whether particular matters have come to my attention.

Basis of independent examiner's report

My examination was carried out in accordance with the general directions given by the Charity Commission. An examination includes a review of the accounting records kept by the charity and a comparison of the accounts presented with those records. It also includes consideration of any unusual items or disclosures in the accounts and seeking explanations from you as trustees concerning any such matters. The procedures undertaken do not provide all the evidence that would be required in an audit and consequently no opinion is given as to whether the accounts present a 'true and fair view' and the report is limited to those matters set out in the statement below.

Independent examiner's statement

In connection with my examination, no matter has come to my attention:

- (1) accounting records were not kept in respect of the Charity as required by section 130 of The Act; or
- (2) the accounts do not accord with those records; or
- (3) the accounts do not comply with the applicable requirements concerning form and content of accounts set out in the Charities (Accounts and Reports) Regulations 2008 other than any requirement that the accounts give a 'true and fair' view which is not a matter considered as part of an independent examination

I have no concerns and have come across no other matters in connection with the examination to which attention should be drawn in this report in order to enable a proper understanding of the accounts to be reached.

Jon Lister FCCA

Enterprise Accountancy Services Limited

8 Castlegate

Tickhill

Doncaster

DN11 9QU

Dated:

Full Life Church & Christian Centre

Statement of Financial Activities (including Income & Expenditure Account) For the year ended 31 December 2022

		Unrestricted Funds 2022 £	Restricted Funds 2022 £	Total Funds 2022 £	Total Funds 2021 £
	Notes				
INCOMING RESOURCES					
COVID Grants		-		-	31,599
Incoming resources from charitable activities:					
Donations and legacies	2	112,382	1,457	113,839	74,246
Charitable activities:	3	120,875	-	120,875	54,825
Investment income		32		32	-
TOTAL INCOMING RESOURCES		233,289	1,457	234,745	160,670
RESOURCES EXPENDED					
Charitable activities	3	204,063	4,236	208,299	158,785
Governance costs	4	2,034	-	2,034	4,053
TOTAL RESOURCES EXPENDED		206,098	4,236	210,333	162,838
NET INCOMING RESOURCES	5	27,191	(2,779)	24,412	(2,168)
TRANSFER		-	-	-	-
Total funds brought forward		693,252	6,222	699,474	701,642
TOTAL FUNDS CARRIED FORWARD		720,443	3,443	723,886	699,474

The statement of financial activities includes all gains and losses in the year. All incoming resources and resources expended derive from continuing activities.

Full Life Church & Christian Centre
Charity number: 1052600
Balance Sheet as at 31 December 2022

	Notes	2022		2021	
		£	£	£	£
FIXED ASSETS					
Tangible assets	7		1,650,843		1,651,123
CURRENT ASSETS					
Stock		-		-	
Debtors	8	-		516	
Cash at bank and in hand		73,374		83,214	
		73,374		83,730	
CURRENT LIABILITIES					
Creditors due within one year	9	31,303		33,176	
NET CURRENT ASSETS/(LIABILITIES)					
			42,072		50,554
Creditors due after more than one year	10		(369,029)		(402,203)
TOTAL ASSETS LESS CURRENT LIABILITIES					
			1,323,886		1,299,474
FUNDS					
Unrestricted funds	11		720,443		693,252
Revaluation	11		600,000		600,000
Restricted funds	11		3,443		6,222
TOTAL FUNDS					
	11		1,323,886		1,299,474

The financial statements were approved by the Board of Trustees and were signed on its behalf by:

Paul Norris - Trustee

Date:

Full Life Church & Christian Centre

Notes to the Financial Statements **For the year ended 31 December 2022**

1 ACCOUNTING POLICIES

Basis of accounting

The financial statements have been prepared under the historical cost convention and in accordance with the Financial Reporting Standard for Smaller Entities (effective January 2015) and with the Accounting and Reporting by: Statement of Recommended Practice (issued in January 2015).

Going concern

The financial statements have been prepared on a going concern basis. The Charity's activities are dependent upon the continued support of its key funders who have undertaken to provide such support for the foreseeable future.

If the going concern basis were not appropriate, adjustments would have to be made to reduce the value of assets to their recoverable values, to provide any further liabilities that may arise and reclassify fixed assets to current assets and long terms liabilities to current liabilities.

Cash flow statement

The trustees have taken advantage of the exemption in Financial Reporting Standard No. 102 from including a cash flow statement in the financial statement on the grounds that the charity is small.

Grants receivable

Revenue grants are credited to the Statement of Financial Activities in the year for which they are received.

Taxation

The company is a registered charity and its activities are not subject to taxation.

Tangible fixed assets

Tangible fixed assets are stated at cost less depreciation. Depreciation is provided at rates calculated to write off the cost less estimated residual value of each asset over its expected useful life, as follows;

Freehold Land and Buildings	Not depreciated
Fixtures, fittings and equipment	20% straight line basis

The freehold property of the charity was revalued by the trustee on 31st December 2007

Staff Costs and overhead expenses

Staff costs and overhead expenses are allocated to activities on the basis of time spent unless otherwise identified to a particular fund.

Full Life Church & Christian Centre

Notes to the Financial Statements - continued For the year ended 31 December 2022

Fund Accounting

Funds held by the charity are either:

Restricted funds - these are funds that can only be used for a particular restricted purposes within the objects of the charity. Restrictions arise when specified by the donor or when funds are raised for particular restricted purposes.

Unrestricted funds - these are funds which can be used at the organisation's discretion in accordance with the objects of the charity.

Designated funds - these funds comprise unrestricted funds that have been set aside by the trustees for restricted purposes.

2 Donations and legacies

	Unrestricted	Restricted	Total	Total
	£	£	2022	2021
	£	£	£	£
Donations of cash or similar	25,131		25,131	62,694
Donations in kind (Food Bank)		1,457	1,457	266
Gift Aid recoverable	87,250		87,250	11,286
	112,382	1,457	113,839	74,246

Charitable activities

	Unrestricted	Restricted	Total	Total
	£	£	2022	2021
	£	£	£	£
Charitable grants	9,962		9,962	-
Parent & Toddler	4,380		4,380	1,836
Rental income	13,167		13,167	12,732
Conference and centre	37,465		37,465	14,891
Other	8,164		8,164	435
Café	47,737		47,737	24,931
	120,875	-	120,875	54,825

Full Life Church & Christian Centre

Notes to the Financial Statements - continued For the year ended 31 December 2022

3 RESOURCES EXPENDED - CHARITABLE ACTIVITIES

	Unrestricted	Restricted	Total 2022	Total 2021
	£	£	£	£
Salaries and staff related costs	103,546		103,546	88,310
Training	498		498	1,062
Activities and Ministry expenses	5,431		5,431	3,307
Food bank costs		4,236	4,236	1,211
Café costs	18,299		18,299	9,607
Administration costs	14,386		14,386	11,533
Property costs	42,637		42,637	23,762
Finance costs	18,537		18,537	19,061
Catering	159		159	-
Sundry expenses	290		290	652
Depreciation	280		280	280
COVID-19 costs	-		-	-
	204,063	4,236	208,299	158,785

4 RESOURCES EXPENDED - GOVERNANCE COSTS

	Unrestricted	Restricted	Total 2022	Total 2021
	£	£	£	£
Legal and professional fees	1,044	-	1,044	2,853
Independent examiners fees	990	-	990	1,200
	2,034	-	2,034	4,053

Full Life Church & Christian Centre

**Notes to the Financial Statements - continued
For the year ended 31 December 2022**

7 TANGIBLE FIXED ASSETS

	Freehold Property £	Fixtures & Fittings £	Office Equipment £	Total £
COST				
At 1st January 2022	1,650,000	82,675	7,359	1,740,034
Additions	-	-	-	-
	<hr/>	<hr/>	<hr/>	<hr/>
At 31st December 2022	1,650,000	82,675	7,359	1,740,034
DEPRECIATION				
At 1st January 2022	-	81,552	7,359	88,911
Charge for year	-	280	-	280
	<hr/>	<hr/>	<hr/>	<hr/>
At 31st December 2022	-	81,832	7,359	89,191
NET BOOK VALUE				
At 31st December 2022	1,650,000	843	-	1,650,843
	<hr/> <hr/>	<hr/> <hr/>	<hr/> <hr/>	<hr/> <hr/>
At 31st December 2021	1,650,000	1,123	-	1,651,123
	<hr/> <hr/>	<hr/> <hr/>	<hr/> <hr/>	<hr/> <hr/>

The trustees have elected not to comply with accounting standards and have not depreciated the freehold property.

The trustees maintain the building on an ongoing basis to ensure that no impairment to the condition of the building occurs.

The trustees acknowledge that any reduction in the value of the property would reduce the value in the unrestricted reserves.

The property was valued by the trustees on an open market value assuming vacant possession.

Full Life Church & Christian Centre

**Notes to the Financial Statements - continued
For the year ended 31 December 2022**

5 NET INCOMING RESOURCES

Net incoming resources for the year is stated after charging:

	2022	2021
	£	£
Depreciation - owned assets	280	280

6 Information on Trustees and employees

The average number of employees during the year was 7 (2021: 6)

The total wage amount for all salaries was £88,310 - this covered 6 posts over the year one of which was a trustee who was not paid above £60,000

No employee received emoluments of more than £60,000.

The charity's key management is comprised of trustees.

Full Life Church & Christian Centre

**Notes to the Financial Statements - continued
For the year ended 31 December 2022**

8 DEBTORS: AMOUNTS FALLING DUE WITHIN ONE YEAR

	2022	2021
	£	£
Gift Aid recoverable	-	-
Trade debtors	-	516
	<u>-</u>	<u>516</u>

9 CREDITORS: AMOUNTS FALLING DUE WITHIN ONE YEAR

	2022	2021
	£	£
Trade creditors	2,252	2,925
Accrued expenses	1,200	2,400
Bank loans	27,851	27,851
	<u>31,303</u>	<u>33,176</u>

10 CREDITORS: AMOUNTS FALLING AFTER MORE THAN ONE YEAR

	2022	2021
	£	£
Bank loans	369,029	402,203
	<u>369,029</u>	<u>402,203</u>

The bank loan is secured by a first legal charge over the freehold property of the charity.

11 ANALYSIS OF NET ASSETS BETWEEN FUNDS

	Unrestricted Funds	Restricted Funds	Revaluation	Total Funds
	£	£	£	£
Tangible fixed assets	1,050,843	-	600,000	1,650,843
Current assets	69,931	3,443		73,374
Current liabilities	(31,303)	-		(31,303)
Creditors due after > 1 year	(369,029)	-	-	(369,029)
	<u>720,443</u>	<u>3,443</u>	<u>600,000</u>	<u>1,323,886</u>
Net assets at 31st December 2022	<u>720,443</u>	<u>3,443</u>	<u>600,000</u>	<u>1,323,886</u>

Full Life Church & Christian Centre

Notes to the Financial Statements - continued
For the year ended 31 December 2022

12 MOVEMENT IN FUNDS

	At 01.01.2022	Incoming Resources	Outgoing Resources	Transfers	At 31.12.2022
General funds	693,252	233,289	206,098	-	720,443
Designated funds					
Property fund	-	-	-	-	-
Redundancy fund	-	-	-	-	-
Total unrestricted funds	<u>693,252</u>	<u>233,289</u>	<u>206,098</u>	<u>-</u>	<u>720,443</u>
Building development	5,250	-	-	-	5,250
Food Bank	972	1,457	4,236	-	(1,807)
Total restricted funds	<u>6,222</u>	<u>1,457</u>	<u>4,236</u>	<u>-</u>	<u>3,443</u>
Revaluation	<u>600,000</u>	<u>-</u>	<u>-</u>	<u>-</u>	<u>600,000</u>
Total funds	<u><u>1,299,474</u></u>	<u><u>234,745</u></u>	<u><u>210,333</u></u>	<u><u>-</u></u>	<u><u>1,323,886</u></u>

FULL LIFE CHURCH (MALTBY)

England & Wales - Charity number 1052600

Accounts

Full Life Church & Christian Centre

Report and Financial Statements

For the year ended 31 December 2021

Registered Charity Number: 1052600

Full Life Church & Christian Centre

Contents of the Financial Statements
For the year ended 31 December 2021

	Page
Company Information	1
Trustees' Annual Report	2 - 9
Independent Examiners Report	10
Statement of Financial Activities	11
Balance Sheet	12
Notes to Financial Statements	13 - 19

Full Life Church & Christian Centre

Company Information

For the year ended 31 December 2021

REGISTERED OFFICE:	Full Life Church Maltby Rotherham South Yorkshire S66 8LF
TRUSTEES:	P. Norris - Chair K. Foster P. Wilson - Appointed 01/01/2021
INDEPENDENT EXAMINER:	Jon Lister FCCA Enterprise Chartered Certified Accountants 8 Castlegate Tickhill Doncaster DN11 9QU
BANKERS:	Natwest Bank Plc Bawtry Road Wickersley Rotherham S60 0JY

Full Life Church & Christian Centre

Trustees' Annual Report **For the year ended 31 December 2021**

The trustees have pleasure in submitting the report and financial statements for the year ended 31 December 2021.

Trustees' responsibilities statement

Charity law requires the trustees to prepare financial statements for each financial year which give a true and fair view of the state of affairs of the charity and of the incoming resources and application of resources, including the income and expenditure, of the charity for the year.

In preparing the financial statements, the trustees are required to:

- select suitable accounting policies and then apply them consistently;
- observe the methods and principles in the Charities SORP;
- make judgements and estimates that are reasonable and prudent;
- state whether applicable UK Accounting Standards have been followed, subject to any material departures disclosed and explained in the financial statement;
- prepare the financial statements on the going concern basis unless it is inappropriate to presume that the charitable company will continue in operation.

The trustees are responsible for keeping adequate accounting records that disclose with reasonable accuracy at any time the financial position of the charity and enable them to ensure that the financial statements comply with the Charities Act 2011. They are also responsible for safeguarding the assets of the charity and hence for taking reasonable steps for the prevention and detection of fraud and other irregularities.

Structure, governance and management

The trustees have responsibility to direct the charity's affairs in such a way as to promote the Objects.

Day to day management

The day to day management of the charity is carried out by the Senior Minister, responsible to the Board of Trustees made up of the trustees of the company.

General meetings are held monthly to discuss matters and for decision making. Meetings are carried out in line with the Governing Document of the charity.

Full Life Church & Christian Centre

Report of the Directors (including the Trustees' Report) - Continued **For the year ended 31 December 2021**

Structure, governance and management continued

Recruitment and training of trustees

Trustees are recruited based on their knowledge and experience in the services the charity provides to meet its objectives.

Trustee training is given before and during the trustee term.

New members of the Church Council are nominated by the Senior Minister and appointed by the Church Council.

Risk management

The board of trustees have overall responsibility for ensuring that the charity has appropriate systems of controls, financial or otherwise. They are also responsible for keeping proper accounting records, for safeguarding the assets of the charity and for taking reasonable steps for the prevention and detection of fraud and other irregularities and to provide reasonable assurance that:

- The charity is operating efficiently and effectively
- The assets are safeguarded against unauthorised use or disposition
- Proper records are maintained and financial information used within the charity reliable
- The charity complies with relevant laws and regulations

Risk review

The trustees have conducted a review of the major risks to which the charity is exposed and appropriate systems have been established to mitigate those risks. Significant external risks to funding have led to the development and implementation of a strategic plan. This will allow for the re-direction of funding and some activities.

Internal risks are minimised by the implementation of procedures for authorisation of all transactions and projects to ensure consistent quality of delivery for all operational aspects of the charity. These procedures are constantly reviewed to ensure that they still meet the needs of the charity.

Objectives and activities

Full Life Church exists to promote the Christian Faith and serve the wider community through Church services, outreach and community projects.

Reserves policy

The trustees have determined that the charity should aim to hold unrestricted cash of no less than £50,000 (which equates to approximately 3 months of unrestricted expenditure so that the charity could continue to operate should income and expenditure vary adversely. At the year end date, the charity held unrestricted cash in excess of this amount.

Full Life Church & Christian Centre

Report of the Directors (including the Trustees' Report) - continued For the year ended 31 December 2021

Review of the year

The period of 2021/22 has again been an unusual time as, along with other organisations around the UK, we sought to recover from the impact of the pandemic, along with seeking to maintain appropriate safety measures to keep our community safe.

We have seen significant encouragement in the many ways as Full Life Church and ministries continued to develop.

We have continued to develop our Community projects around our Mission and Values, and have been able to see the impact of that being outworked.

Vision:

To grow a significant and dynamic Community Church, that serves Maltby, and the surrounding communities within South Yorkshire and North Notts.

Mission Statement:

Our mission statement continues to serve us well;

Impact - Serve - Support

- **Impact and Influence our Community for good and for God**
- **To Serve Others in our region and Nation**
- **To Support Mission Partners overseas**

Values:

We have continued to embody our values in ministry and ethos:

- **Being passionate for God and keeping Christ at the centre of everything we do.**
- **Keeping a Christ-like attitude and servant spirit in the way we serve God and each other.**
- **Being a Church that is built upon sound, relevant, practical and inspirational Christian teaching & inspiring, contemporary and vibrant worship.**
- **Empowering people to rise towards their potential.**
- **That we are a united and purposeful people, committed to pursuing excellence in the way we serve God, each other and our community.**
- **That we are driven by purpose not programme, and by our relationship with Jesus**

Full Life Church & Christian Centre

Report of the Directors (including the Trustees' Report) - continued For the year ended 31 December 2021

In Short:

Warmly **Welcomes** new friends and old
Authentically **Worships** the Living Saviour
Carefully **Holds** the truths of God's Word
Creatively **Communicates** fullness of life in Jesus
Enthusiastically **Encourages** those around us
Healthily **Honours** those who serve and lead us
Generously **Gives** to support ministries and missions
Regularly **Gathers** Sundays and midweek
Willingly **Serves** others in fellowship and community
Persistently **Prays** 'Your Kingdom Come'

Our **current aims** over the period of 2022 and into 2023 have also been and will be re-visited after the Covid 19 period to enable us to re-focus on re-developing our Church and ministries, and our capacity for growth, as we enter the coming season:

Current short and mid term aims as we continued through 2022 were to redevelop our Church and specifically to again:

- **Create Community**
- **Build Bridges**
- **Develop Disciples and**
- **Mobilise our Mission**

We are pleased to report that we have seen:

- The spiritual and relational life of our Church fellowship has been developing by integrating new friends, strengthening peoples' faith, encouraging the concept of serving others
- A continuation to develop our ministry to combat food poverty, vulnerability and homelessness
- A re-launching and developing again our ministry to children, young people, and families
- An increase in the use and availability of our facilities for education and training, skills development, and activities that facilitate the sense of well being and living healthily within our community, and other areas of personal development, as well as activities that facilitate Christian mission

Full Life Church & Christian Centre

Report of the Directors (including the Trustees' Report) - continued For the year ended 31 December 2021

Main Activities During the Past Year

The previous interruptions experienced through cover have of course been now largely removed. Consequently we have been able to offer pastoral care and support to Church attendees and members of our community, and also re establish various activities as legalities allowed.

At the time of writing this report in 2022:

The support we have received has enabled us to see:

- Our **Church** coming back together and growing again. Our gatherings have been more diverse, more accessible, and all age for everyone attending, and in fact this has facilitated increase.
- Our **Family / Parent and Toddlers Playgroups** currently operate 4 times each week so far connecting with approximately 80 - 90 families.
- Our **Cove Coffee House** complete with quiet and sensory garden open 5 full days per week, and serve hundreds of people each week. Every day we seek to support and address the issues of loneliness and social isolation, lock down depression, loss of community contact, and the need for people to find a place of 'Refuge, Peace, and Shelter'.
- Our **Food Bank** give away over 8000 meals over the last 12 months, supporting hundreds of families challenged with food poverty. We also put together and distributed dozens of Christmas hampers throughout in the week before Christmas, so that families could benefit from reduced pressure over the period. Special thanks to the employees of Royal Mail for their kind support and other donors.
- We have recently re-located and re-developed our food bank ministry within our premises to give us an improved space to organise food parcels and position



ourselves for growth and diversity, in anticipation of the potential effects of changes in the labour market and social structures.

Full Life Church & Christian Centre

Report of the Directors (including the Trustees' Report) - continued For the year ended 31 December 2021

- Our **Olive Suite** provide an ideal setting for educational groups and courses. We facilitated a wide variety of community courses and groups including sewing classes, flower arranging, crafts and performing arts.
- Our **Living Well and Conference Suite** provide excellent space for both adults and people young people who attend groups for keeping fit, and living well, physical exercise, and developing performing arts skills.
- Our **Social Housing** continue to provide supported and safe housing for people who may have experienced loss, or life changing health issues



We have continued to **Serve Others** in our Region and Nation by continuing to serve other Churches and ministries through our:

- **Day Conference Centre**. We now again host numerous groups from our community that enrich peoples' lives and facilitate community involvement
- **Residential Retreat and Mission** facility which still is able to facilitate groups from around the world
- Providing **Leadership Training programmes** to other Churches and leaders as requested

We consider that we are **Supporting Mission Partners** overseas by:

- Continuing our relationship with **Watoto Child Care Ministries** based in Kampala, Uganda
- Continuing to support our **Mission Partners in Asturias, Spain**.

Full Life Church & Christian Centre

Report of the Directors (including the Trustees' Report) - continued **For the year ended 31 December 2021**

Our various activities and outreach projects facilitate around 1,200 visits per week from around 1,000 people. This means that we can realistically say, as many do, that Full Life Church is very much a hub within our community, and surrounding communities, many of which continue to experience the significant social challenges of social isolation, food poverty, mental health challenges and social breakdown.

We have been able to conduct ongoing staff and trustee mentoring. We have also been able to grow our volunteer base to 40 - 50 volunteers within our organisation.

A Finance Remark

During the 2021/22 period we have been blessed by:

- Everyone who practiced the concept of biblical giving
- The Gift Aid Schemes
- Special Offerings
- Help in applying for grants
- Help to promote existing ministries
- Effective income bearing ministry departments

Regular giving is at the heart of our sponsorship, and this finances so much of what we are able to do.

Celebrations

This year we celebrate the birthday of our oldest member who will be 99 years old, and who has served our Church for 89 years.

Special Thanks

Special thanks are expressed this year to the Trustees who have agreed to stand for the current period, and support our Pastors Paul and Wesley.

Gratitude is expressed to all those who have shared the other responsibilities of leadership over the past year. Once again we will be expanding our Trustees' team and embrace the wisdom they will bring.

Full Life Church & Christian Centre

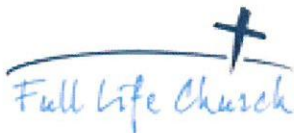
Report of the Directors (including the Trustees' Report) - continued
For the year ended 31 December 2021

Special thanks also go to the following organisations for their generous support through the year:

Tesco Supermarket	For Food Bank and Hampers
All Maltby Schools	For Food Bank and Hampers
Fair Share	For Food Bank and Hampers
Royal Mail Employees	For Food Bank and Hampers
Other generous donors	For special projects

Respectfully Submitted

Paul Norris CMgr FCMI
Senior Pastor
Full Life Church, Maltby



A handwritten signature in black ink that reads 'Paul Norris'. The signature is written in a cursive style and is underlined with a single horizontal stroke.

On Behalf of the Board of Trustees:

Paul Norris - Chair
Date:

Independent Examiners Report to the Trustees of
Full Life Church & Christian Centre
For the year ended 31 December 2021

We report on the accounts for the year ended 31 December 2021 set out on pages 10 to 19.

Retrospective responsibilities of trustees and examiner

The trustees are responsible for the preparation of the accounts in accordance with the requirements of the Charities Act 2011 (The Act). The trustees consider that an audit is not required for this year under section 145(1) of the Charities Act 2011 and that an independent examination is needed.

Having satisfied myself that the charity is not subject to audit under Charity Law and is eligible for independent examination, it is my responsibility to;

- examine the accounts under section 145 of the Charities Act 2011;
- to follow the procedures laid down in the general directions given by the Charity Commission under section 145(5)(b) of the Charities Act 2011; and
- to state whether particular matters have come to my attention.

Basis of independent examiner's report

My examination was carried out in accordance with the general directions given by the Charity Commission. An examination includes a review of the accounting records kept by the charity and a comparison of the accounts presented with those records. It also includes consideration of any unusual items or disclosures in the accounts and seeking explanations from you as trustees concerning any such matters. The procedures undertaken do not provide all the evidence that would be required in an audit and consequently no opinion is given as to whether the accounts present a 'true and fair view' and the report is limited to those matters set out in the statement below.

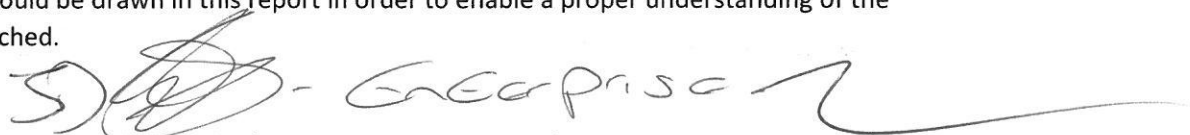
Independent examiner's statement

In connection with my examination, no matter has come to my attention:

- (1) accounting records were not kept in respect of the Charity as required by section 130 of The Act; or
- (2) the accounts do not accord with those records; or
- (3) the accounts do not comply with the applicable requirements concerning form and content of accounts set out in the Charities (Accounts and Reports) Regulations 2008 other than any requirement that the accounts give a 'true and fair' view which is not a matter considered as part of an independent examination

I have no concerns and have come across no other matters in connection with the examination to which attention should be drawn in this report in order to enable a proper understanding of the accounts to be reached.

Jon Lister FCCA
Enterprise Accountancy Services Limited
8 Castlegate
Tickhill
Doncaster
DN11 9QU



Dated:

11-10-2022

Full Life Church & Christian Centre

Statement of Financial Activities (including Income & Expenditure Account)
For the year ended 31 December 2021

	Notes	Unrestricted Funds 2021 £	Restricted Funds 2021 £	Total Funds 2021 £	Total Funds 2020 £
INCOMING RESOURCES					
COVID Grants		31,599		31,599	61,109
Incoming resources from charitable activities:					
Donations and legacies	2	73,979	267	74,246	78,027
Charitable activities:	3	54,825	-	54,825	47,582
Investment income		-		-	10
TOTAL INCOMING RESOURCES		160,403	267	160,670	186,728
RESOURCES EXPENDED					
Charitable activities	3	157,574	1,211	158,785	170,437
Governance costs	4	4,053	-	4,053	2,857
TOTAL RESOURCES EXPENDED		161,627	1,211	162,838	173,294
NET INCOMING RESOURCES	5	(1,224)	(944)	(2,168)	13,434
TRANSFER					
Total funds brought forward		694,476	7,166	701,642	688,208
TOTAL FUNDS CARRIED FORWARD		693,252	6,222	699,474	701,642

The statement of financial activities includes all gains and losses in the year. All incoming resources and resources expended derive from continuing activities.

Full Life Church & Christian Centre
Charity number: 1052600
Balance Sheet as at 31 December 2021

	Notes	2021		2020	
		£	£	£	£
FIXED ASSETS					
Tangible assets	7		1,651,123		1,650,000
CURRENT ASSETS					
Stock		-		-	
Debtors	8	516		-	
Cash at bank and in hand		83,214		116,586	
		<u>83,730</u>		<u>116,586</u>	
CURRENT LIABILITIES					
Creditors due within one year	9		<u>33,176</u>		<u>30,576</u>
NET CURRENT ASSETS/(LIABILITIES)					
			<u>50,554</u>		<u>86,010</u>
Creditors due after more than one year	10		(402,203)		(434,368)
TOTAL ASSETS LESS CURRENT LIABILITIES					
			<u><u>1,299,474</u></u>		<u><u>1,301,642</u></u>
FUNDS					
Unrestricted funds	11		693,252		694,476
Revaluation	11		600,000		600,000
Restricted funds	11		<u>6,222</u>		<u>7,166</u>
TOTAL FUNDS					
	11		<u><u>1,299,474</u></u>		<u><u>1,301,642</u></u>

The financial statements were approved by the Board of Trustees and were signed on its behalf by:

Paul Norris - Trustee



Date:

11th Oct 2022.

Full Life Church & Christian Centre

Notes to the Financial Statements
For the year ended 31 December 2021

1 ACCOUNTING POLICIES

Basis of accounting

The financial statements have been prepared under the historical cost convention and in accordance with the Financial Reporting Standard for Smaller Entities (effective January 2015) and with the Accounting and Reporting by: Statement of Recommended Practice (issued in January 2015).

Going concern

The financial statements have been prepared on a going concern basis. The Charity's activities are dependent upon the continued support of its key funders who have undertaken to provide such support for the foreseeable future.

If the going concern basis were not appropriate, adjustments would have to be made to reduce the value of assets to their recoverable values, to provide any further liabilities that may arise and reclassify fixed assets to current assets and long terms liabilities to current liabilities.

Cash flow statement

The trustees have taken advantage of the exemption in Financial Reporting Standard No. 102 from including a cash flow statement in the financial statement on the grounds that the charity is small.

Grants receivable

Revenue grants are credited to the Statement of Financial Activities in the year for which they are received.

Taxation

The company is a registered charity and its activities are not subject to taxation.

Tangible fixed assets

Tangible fixed assets are stated at cost less depreciation. Depreciation is provided at rates calculated to write off the cost less estimated residual value of each asset over its expected useful life, as follows;

Freehold Land and Buildings	Not depreciated
Fixtures, fittings and equipment	20% straight line basis

The freehold property of the charity was revalued by the trustees on 31st December 2007

Staff Costs and overhead expenses

Staff costs and overhead expenses are allocated to activities on the basis of time spent unless otherwise identified to a particular fund.

Full Life Church & Christian Centre

Notes to the Financial Statements - continued For the year ended 31 December 2021

Fund Accounting

Funds held by the charity are either:

Restricted funds - these are funds that can only be used for a particular restricted purposes within the objects of the charity. Restrictions arise when specified by the donor or when funds are raised for particular restricted purposes.

Unrestricted funds - these are funds which can be used at the organisation's discretion in accordance with the objects of the charity.

Designated funds - these funds comprise unrestricted funds that have been set aside by the trustees for restricted purposes.

2 Donations and legacies

	Unrestricted	Restricted	Total	Total
	£	£	2021	2020
	£	£	£	£
Donations of cash or similar	62,694		62,694	68,933
Donations in kind (Food Bank)	-	267	267	1,061
Gift Aid recoverable	11,286		11,286	8,033
	73,979	267	74,246	78,027

Charitable activities

	Unrestricted	Restricted	Total	Total
	£	£	2021	2020
	£	£	£	£
Charitable grants	-		-	3,000
Parent & Toddler	1,836		1,836	833
Rental income	12,732		12,732	14,772
Conference and centre	14,891		14,891	13,772
Other	435		435	116
Café	24,931		24,931	15,089
	54,825	-	54,825	47,582

Full Life Church & Christian Centre

Notes to the Financial Statements - continued

For the year ended 31 December 2021

3 RESOURCES EXPENDED - CHARITABLE ACTIVITIES

	Unrestricted	Restricted	Total 2021	Total 2020
	£	£	£	£
Salaries and staff related costs	88,310	-	88,310	99,906
Training	1,062	-	1,062	219
Activities and Ministry expenses	3,307	-	3,307	4,147
Food bank costs	-	1,211	1,211	1,977
Café costs	9,607	-	9,607	8,711
Administration costs	11,533	-	11,533	3,135
Property costs	23,762	-	23,762	25,850
Finance costs	19,061	-	19,061	19,838
Catering	-	-	-	271
Sundry expenses	652	-	652	978
Depreciation	280	-	280	5,405
COVID-19 costs	-	-	-	-
	157,574	1,211	158,785	170,437

4 RESOURCES EXPENDED - GOVERNANCE COSTS

	Unrestricted	Restricted	Total 2021	Total 2020
	£	£	£	£
Legal and professional fees	2,853	-	2,853	1,609
Independent examiners fees	1,200	-	1,200	1,248
	4,053	-	4,053	2,857

Full Life Church & Christian Centre

**Notes to the Financial Statements - continued
For the year ended 31 December 2021**

5 NET INCOMING RESOURCES

Net incoming resources for the year is stated after charging:

	2021	2020
	£	£
Depreciation - owned assets	<u>280</u>	<u>5,405</u>

6 Information on Trustees and employees

The average number of employees during the year was 6 (2020: 6)

The total wage amount for all salaries was £88,310 - this covered 6 posts over the year one of which was a trustee who was not paid above £60,000

No employee received emoluments of more than £60,000.

The charity's key management is comprised of trustees.

Full Life Church & Christian Centre

Notes to the Financial Statements - continued
For the year ended 31 December 2021

7 TANGIBLE FIXED ASSETS

	Freehold Property £	Fixtures & Fittings £	Office Equipment £	Total £
COST				
At 1st January 2021	1,650,000	81,272	7,359	1,738,631
Additions	-	1,403	-	1,403
At 31st December 2021	<u>1,650,000</u>	<u>82,675</u>	<u>7,359</u>	<u>1,740,034</u>
DEPRECIATION				
At 1st January 2021	-	81,272	7,359	88,631
Charge for year	-	280	-	280
At 31st December 2021	<u>-</u>	<u>81,552</u>	<u>7,359</u>	<u>88,911</u>
NET BOOK VALUE				
At 31st December 2021	<u>1,650,000</u>	<u>1,123</u>	<u>-</u>	<u>1,651,123</u>
At 31st December 2020	<u>1,650,000</u>	<u>-</u>	<u>-</u>	<u>1,650,000</u>

The trustees have elected not to comply with accounting standards and have not depreciated the freehold property.

The trustees maintain the building on an ongoing basis to ensure that no impairment to the condition of the building occurs.

The trustees acknowledge that any reduction in the value of the property would reduce the value in the unrestricted reserves.

The property was valued by the trustees on an open market value assuming vacant possession.

Full Life Church & Christian Centre

Notes to the Financial Statements - continued
For the year ended 31 December 2021

8 DEBTORS: AMOUNTS FALLING DUE WITHIN ONE YEAR

	2021	2020
	£	£
Gift Aid recoverable	-	-
Trade debtors	516	-
	<u>516</u>	<u>-</u>

9 CREDITORS: AMOUNTS FALLING DUE WITHIN ONE YEAR

	2021	2020
	£	£
Trade creditors	2,925	1,525
Accrued expenses	2,400	1,200
Bank loans	27,851	27,851
	<u>33,176</u>	<u>30,576</u>

10 CREDITORS: AMOUNTS FALLING AFTER MORE THAN ONE YEAR

	2021	2020
	£	£
Bank loans	402,203	434,368
	<u>402,203</u>	<u>434,368</u>

The bank loan is secured by a first legal charge over the freehold property of the charity.

11 ANALYSIS OF NET ASSETS BETWEEN FUNDS

	Unrestricted Funds £	Restricted Funds £	Revaluation £	Total Funds £
Tangible fixed assets	1,051,123	-	600,000	1,651,123
Current assets	77,508	6,222		83,730
Current liabilities	(33,176)	-		(33,176)
Creditors due after > 1 year	(402,203)	-	-	(402,203)
	<u>693,252</u>	<u>6,222</u>	<u>600,000</u>	<u>1,299,474</u>
Net assets at 31st December 2021	693,252	6,222	600,000	1,299,474

Full Life Church & Christian Centre

Notes to the Financial Statements - continued
For the year ended 31 December 2021

12 MOVEMENT IN FUNDS

	At 01.01.2021	Incoming Resources	Outgoing Resources	Transfers	At 31.12.2021
General funds	694,476	160,403	161,627	-	693,252
Designated funds					
Property fund	-	-	-	-	-
Redundancy fund	-	-	-	-	-
Total unrestricted funds	<u>694,476</u>	<u>160,403</u>	<u>161,627</u>	<u>-</u>	<u>693,252</u>
Building development	5,250	-	-	-	5,250
Food Bank	1,916	267	1,211	-	972
Total restricted funds	<u>7,166</u>	<u>267</u>	<u>1,211</u>	<u>-</u>	<u>6,222</u>
Revaluation	<u>600,000</u>	<u>-</u>	<u>-</u>	<u>-</u>	<u>600,000</u>
Total funds	<u><u>1,301,642</u></u>	<u><u>160,670</u></u>	<u><u>162,838</u></u>	<u><u>-</u></u>	<u><u>1,299,474</u></u>

FULL LIFE CHURCH (MALTBY)

England & Wales - Charity number 1052600

Accounts

Full Life Church & Christian Centre

Report and Financial Statements

For the year ended 31 December 2020

Registered Charity Number: 1052600

Full Life Church & Christian Centre

Contents of the Financial Statements
For the year ended 31 December 2020

	Page
Company Information	1
Trustees' Annual Report	2 - 6
Independent Examiners Report	7
Statement of Financial Activities	8
Balance Sheet	9
Notes to Financial Statements	10 - 16

Full Life Church & Christian Centre

Company Information

For the year ended 31 December 2020

REGISTERED OFFICE:

Full Life Church
Maltby
Rotherham
South Yorkshire
S66 8LF

TRUSTEES:

P. Norris - Chair
K. Foster
P. Wilson - Appointed 01/01/2021

INDEPENDENT EXAMINER:

Jon Lister FCCA
Enterprise Chartered Certified Accountants
8 Castlegate
Tickhill
Doncaster
DN11 9QU

BANKERS:

Natwest Bank Plc
Bawtry Road
Wickersley
Rotherham
S60 0JY

Full Life Church & Christian Centre

Trustees' Annual Report

For the year ended 31 December 2020

The trustees have pleasure in submitting the report and financial statements for the year ended 31 December 2020.

Trustees' responsibilities statement

Charity law requires the trustees to prepare financial statements for each financial year which give a true and fair view of the state of affairs of the charity and of the incoming resources and application of resources, including the income and expenditure, of the charity for the year.

In preparing the financial statements, the trustees are required to:

- select suitable accounting policies and then apply them consistently;
- observe the methods and principles in the Charities SORP;
- make judgements and estimates that are reasonable and prudent;
- state whether applicable UK Accounting Standards have been followed, subject to any material departures disclosed and explained in the financial statement;
- prepare the financial statements on the going concern basis unless it is inappropriate to presume that the charitable company will continue in operation.

The trustees are responsible for keeping adequate accounting records that disclose with reasonable accuracy at any time the financial position of the charity and enable them to ensure that the financial statements comply with the Charities Act 2011. They are also responsible for safeguarding the assets of the charity and hence for taking reasonable steps for the prevention and detection of fraud and other irregularities.

Structure, governance and management

The trustees have responsibility to direct the charity's affairs in such a way as to promote the Objects.

Day to day management

The day to day management of the charity is carried out by the Senior Minister, responsible to the Board of Trustees made up of the trustees of the company.

General meetings are held monthly to discuss matters and for decision making. Meetings are carried out in line with the Governing Document of the charity.

Full Life Church & Christian Centre

Report of the Directors (including the Trustees' Report) - Continued **For the year ended 31 December 2020**

Structure, governance and management continued

Recruitment and training of trustees

Trustees are recruited based on their knowledge and experience in the services the charity provides to meet its objectives.

Trustee training is given before and during the trustee term.

New members of the Church Council are nominated by the Senior Minister and appointed by the Church Council.

Risk management

The board of trustees have overall responsibility for ensuring that the charity has appropriate systems of controls, financial or otherwise. They are also responsible for keeping proper accounting records, for safeguarding the assets of the charity and for taking reasonable steps for the prevention and detection of fraud and other irregularities and to provide reasonable assurance that:

- The charity is operating efficiently and effectively
- The assets are safeguarded against unauthorised use or disposition
- Proper records are maintained and financial information used within the charity reliable
- The charity complies with relevant laws and regulations

Risk review

The trustees have conducted a review of the major risks to which the charity is exposed and appropriate systems have been established to mitigate those risks. Significant external risks to funding have led to the development and implementation of a strategic plan. This will allow for the re-direction of funding and some activities.

Internal risks are minimised by the implementation of procedures for authorisation of all transactions and projects to ensure consistent quality of delivery for all operational aspects of the charity. These procedures are constantly reviewed to ensure that they still meet the needs of the charity.

Objectives and activities

Full Life Church exists to promote the Christian Faith and serve the wider community through Church services, outreach and community projects.

Reserves policy

The trustees have determined that the charity should aim to hold unrestricted cash of no less than £50,000 (which equates to approximately 3 months of unrestricted expenditure so that the charity could continue to operate should income and expenditure vary adversely. At the year end date, the charity held unrestricted cash in excess of this amount.

Full Life Church & Christian Centre

Report of the Directors (including the Trustees' Report) - continued **For the year ended 31 December 2020**

Review of the year

2020 was inevitably a different year, not just for Full Life but indeed for our whole country. Set against the context of Covid 19 there were of course many things that were different. Nevertheless many in ways . Full Life Church and ministries continued to develop. We have refocused on how we present our Mission and Values

Mission Statement:

Impact - Serve - Support

We have refocused on our mission to:

- Impact and Influence our Community for good and for God
- To Serve Others in our region and Nation
- To Support Mission Partners overseas

We have re-visited how we communicate our values, seeking to re-defining them:

Warmly Welcomes new friends and old
Authentically Worships the Living Saviour
Robustly Holds to the truths of God's Word
Creatively Communicates fullness of life in Jesus
Enthusiastically Encourages those around us
Healthily Honours those who serve and lead us
Generously Gives to support ministries and missions
Regularly Gathers Sundays and midweek
Willingly Serves others in fellowship and community
Persistently Prays 'Your Kingdom Come'

Our current aims over the period of 2021 and into 2022 have also been and will be re-visited after the Covid 19 period to enable us to re-focus on re-developing our Church and ministries as we enter a new season:

Current short and mid term aims as we continue through 2021 and in to 2022 are to redevelop our Church and specifically to again:

- Create Community
- Build Bridges
- Develop Disciples and
- Mobilise our Mission

Full Life Church & Christian Centre

Report of the Directors (including the Trustees' Report) - continued **For the year ended 31 December 2020**

Specific goals that we will be aiming for:

- Developing the spiritual and relational life of our Church fellowship by integrating new friends, strengthening peoples' faith, encouraging the concept of serving others
- Continuing to develop our ministry to combat food poverty, vulnerability and homelessness
- Re-launching and developing again our ministry to children, young people, and families
- Increasing the use and availability of our facilities for education and training, skills development, and activities that facilitate our community living healthily, well being and personal development as well as activities that facilitate Christian mission

Main Activities During the Past Year

These were obviously interrupted at the lockdown periods. Nevertheless, we were able to offer pastoral care and support to Church attendees and members of our community, and also conduct a wide variety of activities as legalities allowed. Activities such as:

- Weekly Church services, mid week Church and special guest services
- Family Stay and Play Toddler Groups
- Youth ministry and children's activities
- The Cove Community Coffee House
- Our Food Bank Ministry
- Keep fit and personal well being groups in our Living Well Community Suite
- Community Education courses in our Olive Suite
- Our partnerships with local Schools, and other community support organisations
- Social housing

Our Christian Residential Mission / Retreat Centre has been closed most of the year because of Covid 19, however we anticipate re-establishing this as soon as possible.

At the time of writing this report in 2021

- Our Church is coming back together and growing again. Our gatherings have been more diverse and accessible to everyone attending, and in fact this has increased accessibility
- The Cove Coffee House is continuing to experience good progress with a mixture of regular visitors and occasional visitors
- Our Family groups have restarted and are attracting regular visitors
- Our Conference Ministry is re-establishing. This is in part due the opening of the Cove
- Our Food bank is continuing to serve people in our area experiencing food poverty

Full Life Church & Christian Centre

Report of the Directors (including the Trustees' Report) - continued For the year ended 31 December 2020

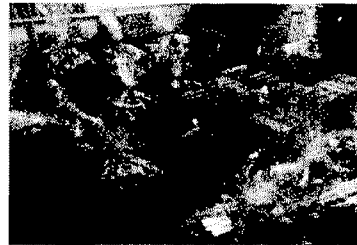
Activities we have been successful in re-opening are:

- **Family / Parent and Toddlers Playgroups** which currently operate 4 times each week so far connecting with approximately 50 families.

- Our **Cove Coffee House** complete with sensory garden which we seek to support and address the is serving hundreds of people each week, and through issues of loneliness and social isolation, lock down depression, loss of community contact, and the need for people to find a place of Refuge, Peace, and Shelter.

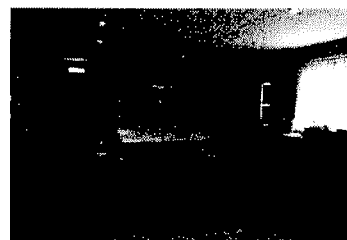
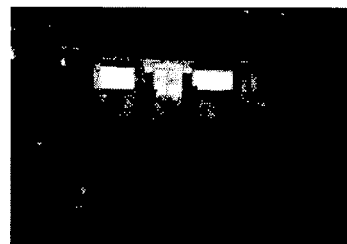


- Our **Food Bank** supplied over 4000 meals throughout 2020, supporting hundreds of family units challenged by food poverty. We also put together and distributed dozens of Christmas hampers throughout in the week before Christmas, so that families could benefit from reduced pressure over the period. Special thanks to the employees of Royal Mail for their kind support and other doners.



- We have recently re-located and re-developed our food bank ministry within our premises to give us an improved space to organise food parcels and position ourselves for growth and diversity, in anticipation of the potential effects of the withdrawal of furlough.

- Our **Olive Suite** which provides an ideal setting for educational groups and courses. We facilitated a wide variety of community courses and groups
- Our **Living Well and Conference Suite** which provided excellent space for both adults and people young people who attend groups for keeping fit, and living well, physical exercise, and developing performing arts skills.
- Our **Social Housing** which continued to provides supported and safe housing for people who may have experienced loss, or life changing health issues



Full Life Church & Christian Centre

Report of the Directors (including the Trustees' Report) - continued For the year ended 31 December 2020

We continued to **Serve Others** in our Region and Nation by continuing to serve other Churches and ministries through our:

- **Day Conference** Centre. We now again host numerous groups from our community that enrich peoples' lives and facilitate community involvement
- **Residential Retreat and Mission** Facility which still is able to facilitate groups from around the world
- Providing **Leadership Training programmes** to other Churches and leaders as requested



Of course it is difficult to forecast the length of the readjustment period required after the pandemic, nevertheless we are now seeing things gradually return to a similarity of normality.

We consider that we are **Supporting Mission Partners** overseas by:

- Continuing our relationship with **Watoto Child Care** Ministries based in Kampala, Uganda
- Continuing to Support our **Mission Partners in Asturias**, Spain.
- Developing a new service partnership with the **Nicodemus** charity that works in UK and Central America with unreached people groups

This means that we are supporting Mission Partners on 3 continents.

Our aim is to develop support for other projects in due course.

We have conducted 2 Trustee Training courses that have helped to develop volunteers within our organisation and others. This has been a support to a number of other Churches and charitable organisations.

A Finance Remark

During 2020 we were blessed by:

- Everyone who practiced the concept of biblical giving
- The Gift Aid Schemes
- Special Offerings
- Help in applying for grants
- Help to promote existing ministries
- Effective income bearing ministry departments

Full Life Church & Christian Centre

Report of the Directors (including the Trustees' Report) - continued
For the year ended 31 December 2020

Celebrations

We are currently celebrating the achievement of Pastor Wesley who has received national accreditation as an A/G Minister. Wesley has spent a number of years in training with 3 different Churches across England, and also gaining further experience in working for Christians Against Poverty managing different partnership regions from the South West, London, and Yorkshire.

Special Thanks

Gratitude is expressed to all those who have shared the responsibility of leadership this year.

Special thanks are expressed this year to the Trustees who have agreed to stand for the current period, and support our Pastors Paul and Wesley.

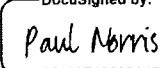
Peter Wilson
Pastor Kevin Foster

Prospective new trustees are being trained.

Special thanks also go to the following organisations for their generous support through the year:

Tesco Supermarket	For Food Bank and Hampers
Morrisons Supermarket	For Food Bank and Hamper & Watoto Choir support
All Maltby Schools	For Food Bank and Hampers
Rotherham Rotary Club	For Food Bank and Hampers
Fair Share	For Food Bank and Hampers
Royal Mail Employees	For Food Bank and Hampers
Other generous donors	For special projects

On Behalf of the Board of Trustees:

DocuSigned by:

F5630E13293A420...
Paul Norris - Chair
Date: 20-Oct-21 | 7:05 AM PDT

Independent Examiners Report to the Trustees of
Full Life Church & Christian Centre
For the year ended 31 December 2020

We report on the accounts for the year ended 31 December 2020 set out on pages 9 to 18.

Retrospective responsibilities of trustees and examiner

The trustees are responsible for the preparation of the accounts in accordance with the requirements of the Charities Act 2011 (The Act). The trustees consider that an audit is not required for this year under section 145(1) of the Charities Act 2011 and that an independent examination is needed.

Having satisfied myself that the charity is not subject to audit under Charity Law and is eligible for independent examination, it is my responsibility to;

- examine the accounts under section 145 of the Charities Act 2011;
- to follow the procedures laid down in the general directions given by the Charity Commission under section 145(5)(b) of the Charities Act 2011; and
- to state whether particular matters have come to my attention.

Basis of independent examiner's report

My examination was carried out in accordance with the general directions given by the Charity Commission. An examination includes a review of the accounting records kept by the charity and a comparison of the accounts presented with those records. It also includes consideration of any unusual items or disclosures in the accounts and seeking explanations from you as trustees concerning any such matters. The procedures undertaken do not provide all the evidence that would be required in an audit and consequently no opinion is given as to whether the accounts present a 'true and fair view' and the report is limited to those matters set out in the statement below.

Independent examiner's statement

In connection with my examination, no matter has come to my attention:

- (1) accounting records were not kept in respect of the Charity as required by section 130 of The Act; or
- (2) the accounts do not accord with those records; or
- (3) the accounts do not comply with the applicable requirements concerning form and content of accounts set out in the Charities (Accounts and Reports) Regulations 2008 other than any requirement that the accounts give a 'true and fair' view which is not a matter considered as part of an independent examination

I have no concerns and have come across no other matters in connection with the examination to which attention should be drawn in this report in order to enable a proper understanding of the accounts to be reached.

Jon Lister FCCA

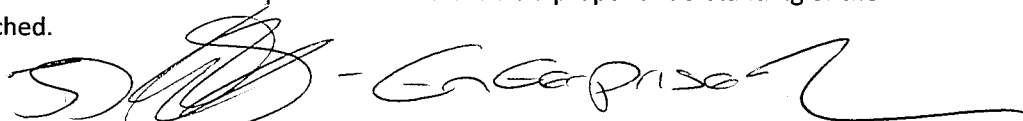
Enterprise Accountancy Services Limited

8 Castlegate

Tickhill

Doncaster

DN11 9QU



Dated:

25-10-2021

Full Life Church & Christian Centre**Statement of Financial Activities (including Income & Expenditure Account)**
For the year ended 31 December 2020

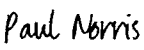
		Unrestricted Funds 2020 £	Restricted Funds 2020 £	Total Funds 2020 £	Total Funds 2019 £
	Notes				
INCOMING RESOURCES					
COVID Grants		61,109		61,109	-
Incoming resources from charitable activities:					
Donations and legacies	2	77,027	1,000	78,027	86,794
Charitable activities:	3	44,582	-	44,582	186,148
Investment income		11		11	19
TOTAL INCOMING RESOURCES		182,728	1,000	183,728	272,961
RESOURCES EXPENDED					
Charitable activities	3	170,437	-	170,437	317,545
Governance costs	4	2,857	-	2,857	4,260
TOTAL RESOURCES EXPENDED		173,294	-	173,294	321,805
NET INCOMING RESOURCES	5	9,434	1,000	10,434	(48,844)
TRANSFER		(447)	447	-	-
Total funds brought forward		1,285,489	2,719	1,288,208	1,337,052
TOTAL FUNDS CARRIED FORWARD		1,294,476	4,166	1,298,642	1,288,208

The statement of financial activities includes all gains and losses in the year. All incoming resources and resources expended derive from continuing activities.

Full Life Church & Christian Centre
Charity number: 1052600
Balance Sheet as at 31 December 2020

	Notes	2020		2019	
		£	£	£	£
FIXED ASSETS					
Tangible assets	7		1,650,000		1,655,405
CURRENT ASSETS					
Stock		-		1,611	
Debtors	8	-		2,998	
Cash at bank and in hand		<u>116,586</u>		<u>102,781</u>	
		116,586		107,390	
CURRENT LIABILITIES					
Creditors due within one year	9		<u>30,576</u>		<u>35,063</u>
NET CURRENT ASSETS/(LIABILITIES)					
			<u>86,011</u>		<u>72,327</u>
Creditors due after more than one year	10		(434,368)		(439,524)
TOTAL ASSETS LESS CURRENT LIABILITIES					
			<u>1,301,643</u>		<u>1,288,208</u>
FUNDS					
Unrestricted funds	11		1,294,476		1,285,489
Restricted funds	11		<u>4,166</u>		<u>2,719</u>
TOTAL FUNDS					
	11		<u>1,298,642</u>		<u>1,288,208</u>

The financial statements were approved by the Board of Trustees and were signed on its behalf by:

DocuSigned by:

 F5630E13293A420...
 Paul Norris - Trustee

Date: 20-Oct-21 | 7:05 AM PDT

Full Life Church & Christian Centre

Notes to the Financial Statements **For the year ended 31 December 2020**

1 ACCOUNTING POLICIES

Basis of accounting

The financial statements have been prepared under the historical cost convention and in accordance with the Financial Reporting Standard for Smaller Entities (effective January 2015) and with the Accounting and Reporting by: Statement of Recommended Practice (issued in January 2015).

Going concern

The financial statements have been prepared on a going concern basis. The Charity's activities are dependent upon the continued support of its key funders who have undertaken to provide such support for the foreseeable future.

If the going concern basis were not appropriate, adjustments would have to be made to reduce the value of assets to their recoverable values, to provide any further liabilities that may arise and reclassify fixed assets to current assets and long terms liabilities to current liabilities.

Cash flow statement

The trustees have taken advantage of the exemption in Financial Reporting Standard No. 102 from including a cash flow statement in the financial statement on the grounds that the charity is small.

Grants receivable

Revenue grants are credited to the Statement of Financial Activities in the year for which they are received.

Taxation

The company is a registered charity and its activities are not subject to taxation.

Tangible fixed assets

Tangible fixed assets are stated at cost less depreciation. Depreciation is provided at rates calculated to write off the cost less estimated residual value of each asset over its expected useful life, as follows;

Freehold Land and Buildings	Not depreciated
Fixtures, fittings and equipment	20% straight line basis

Staff Costs and overhead expenses

Staff costs and overhead expenses are allocated to activities on the basis of time spent unless otherwise identified to a particular fund.

Full Life Church & Christian Centre**Notes to the Financial Statements - continued**
For the year ended 31 December 2020**Fund Accounting**

Funds held by the charity are either:

Restricted funds - these are funds that can only be used for a particular restricted purposes within the objects of the charity. Restrictions arise when specified by the donor or when funds are raised for particular restricted purposes.

Unrestricted funds - these are funds which can be used at the organisation's discretion in accordance with the objects of the charity.

Designated funds - these funds comprise unrestricted funds that have been set aside by the trustees for restricted purposes.

2 Donations and legacies

	Unrestricted	Restricted	Total 2020	Total 2019
	£	£	£	£
Donations of cash or similar	68,933		68,933	67,103
Donations in kind (Food Bank)	61	1,000	1,061	7,270
Gift Aid recoverable	8,033		8,033	12,421
	<u>77,027</u>	<u>1,000</u>	<u>78,027</u>	<u>86,794</u>

Charitable activities

	Unrestricted	Restricted	Total 2020	Total 2019
	£	£	£	£
Charitable grants	-	3,000	3,000	3,250
Pre-school/early years funding	-		-	71,052
Parent & Toddler	833		833	2,087
Rental income	14,772		14,772	14,666
Conference and centre	13,772		13,772	41,038
Other	116		116	7,400
Café	15,089	-	15,089	46,655
	<u>44,582</u>	<u>3,000</u>	<u>47,582</u>	<u>186,148</u>

Full Life Church & Christian Centre**Notes to the Financial Statements - continued**
For the year ended 31 December 2020**3 RESOURCES EXPENDED - CHARITABLE ACTIVITIES**

	Unrestricted	Restricted	Total	Total
	2020	2020	2020	2019
	£	£	£	£
Salaries and staff related costs	99,906	-	99,906	177,592
Training	219	-	219	1,380
Activities and Ministry expenses	4,147	-	4,147	10,140
Food bank costs	1,977	-	1,977	7,177
Café costs	8,711	-	8,711	20,255
Administration costs	3,135	-	3,135	10,910
Property costs	25,850	-	25,850	24,018
Finance costs	19,838	-	19,838	21,059
Catering	271	-	271	3,143
Sundry expenses	977	-	977	2,578
Depreciation	5,405	-	5,405	39,293
COVID-19 costs	-	-	-	-
	170,437	-	170,437	317,545

4 RESOURCES EXPENDED - GOVERNANCE COSTS

	Unrestricted	Restricted	Total	Total
	2020	2020	2020	2019
	£	£	£	£
Legal and professional fees	1,609	-	1,609	-
Independent examiners fees	1,248	-	1,248	4,260
	2,857	-	2,857	4,260

Full Life Church & Christian Centre

**Notes to the Financial Statements - continued
For the year ended 31 December 2020**

5 NET INCOMING RESOURCES

Net incoming resources for the year is stated after charging:

	2020	2019
	£	£
Depreciation - owned assets	5,405	39,293

6 Information on Trustees and employees

The average number of employees during the year was made 6 (2019: 21)

The total wage amount for all salaries was £99,906 - this covered 11 posts over the year one of which was a trustee who was not paid above £60,000

No employee received emoluments of more than £60,000.

The charity's key management is comprised of trustees.

Full Life Church & Christian Centre

Notes to the Financial Statements - continued For the year ended 31 December 2020

7 TANGIBLE FIXED ASSETS

	Freehold Property £	Fixtures & Fittings £	Office Equipment £	Total £
COST				
At 1st January 2020	1,650,000	81,272	7,359	1,738,631
Additions	-	-	-	-
At 31st December 2020	<u>1,650,000</u>	<u>81,272</u>	<u>7,359</u>	<u>1,738,631</u>
DEPRECIATION				
At 1st January 2020	-	75,867	7,359	83,226
Charge for year	-	5,405	-	5,405
At 31st December 2020	-	<u>81,272</u>	<u>7,359</u>	<u>88,631</u>
NET BOOK VALUE				
At 31st December 2020	<u>1,650,000</u>	-	-	<u>1,650,000</u>
At 31st December 2019	<u>1,650,000</u>	<u>5,405</u>	-	<u>1,655,405</u>

The trustees have elected not to comply with accounting standards and have not depreciated the freehold property.

The trustees maintain the building on an ongoing basis to ensure that no impairment to the condition of the building occurs.

The trustees acknowledge that any reduction in the value of the property would reduce the value in the unrestricted reserves.

The property was valued by the trustees on an open market value assuming vacant possession.

Full Life Church & Christian Centre

Notes to the Financial Statements - continued For the year ended 31 December 2020

8 DEBTORS: AMOUNTS FALLING DUE WITHIN ONE YEAR

	2020	2019
	£	£
Gift Aid recoverable	-	1,745
PAYE recoverable	-	1,253
	<u>-</u>	<u>2,998</u>

9 CREDITORS: AMOUNTS FALLING DUE WITHIN ONE YEAR

	2020	2019
	£	£
Trade creditors	1,525	4,272
Accrued expenses	1,200	2,940
Bank loans	27,851	27,851
	<u>30,576</u>	<u>35,063</u>

10 CREDITORS: AMOUNTS FALLING AFTER MORE THAN ONE YEAR

	2020	2019
	£	£
Bank loans	434,368	439,524
	<u>434,368</u>	<u>439,524</u>

The bank loan is secured by a first legal charge over the freehold property of the charity.

11 ANALYSIS OF NET ASSETS BETWEEN FUNDS

	Unrestricted Funds £	Restricted Funds £	Total Funds £
Tangible fixed assets	1,650,000	-	1,650,000
Current assets	115,586	1,000	116,586
Current liabilities	(30,576)	-	(30,576)
Creditors due after > 1 year	(434,368)	-	(434,368)
Net assets at 31st December 2020	<u>1,300,643</u>	<u>1,000</u>	<u>1,301,643</u>

Full Life Church & Christian Centre

Notes to the Financial Statements - continued For the year ended 31 December 2020

12 MOVEMENT IN FUNDS

	At 01.01.2020	Incoming Resources	Outgoing Resources	Transfers	At 31.12.2020
General funds	1,285,489	182,728	173,294	-	1,294,923
Designated funds					
Property fund	-	-	-	-	-
Redundancy fund	-	-	-	-	-
Total unrestricted funds	<u>1,285,489</u>	<u>182,728</u>	<u>173,294</u>	<u>-</u>	<u>1,294,923</u>
Building development	2,250	3,000	-	-	5,250
Food Bank	469	1,000	-	-	1,469
Total restricted funds	<u>2,719</u>	<u>4,000</u>	<u>-</u>	<u>-</u>	<u>6,719</u>
Total funds	<u><u>1,288,208</u></u>	<u><u>186,728</u></u>	<u><u>173,294</u></u>	<u><u>-</u></u>	<u><u>1,301,642</u></u>