



Trustees' Report and Financial Statements

For the year ended 31 March 2024

Charity Registration Number: 1051736

Contents

Message from the Chair and Chief Executive of Sussex Partnership NHS Foundation Trust	03
Message from the Charity Director	05
Charity Objectives and Activities	06
Achievements and Performance: Review of the Year	08
Creative Recovery	16
Looking to the Future	19
Financial Review	21
Unaudited Annual Accounts for the year ended 31 March 2024	24
Legal and Administrative Information	48

A whole community approach to healthcare

Message from the Chair and Chief Executive Officer of Sussex Partnership NHS Foundation Trust
Sean Duggan, OBE and Dr Jane Padmore



Supporting people's recovery is important work, work that takes whole communities to get right. Heads On's annual report for 2023-24 is a celebration of what is possible when communities come together to get it right. It acknowledges the important work of the charity in the years during and immediately after Covid-19, as we close our final pandemic focused programmes, and the role that NHS charities can play as we look to a future where the NHS is deeply embedded in its local communities.

Delivering the Sussex Community Partnership Grants Programme on behalf of NHS Charities Together in 2020-24 transformed the work of Heads On, embracing external grant making whilst working across the healthcare system to build partnerships between NHS providers and voluntary sector organisations. The programme reached over 6,700 beneficiaries and made a very real difference to people's lives as it brought social connection to those most impacted by the pandemic. This includes children and young people with disabilities, older people, middle aged men at risk of suicide and racialised communities with long term health conditions.

Alongside grant-funded community partnerships, Heads On led a major anti-racism training programme. This programme was hugely needed and developed in partnership with Brighton & Sussex Medical School. It has laid strong foundations for the work Sussex Partnership needs to do in developing our Patient and Carer Race Equality Framework, in line with new national guidance. There is much to be done. The learning and relationships from Heads On's work will be invaluable.

Across the NHS, people are waiting longer to access services than we would want. Heads On's programme of support for families with children on CAMHS waiting lists launched in 2023 and has been well received, helping parent/carers to support their young people at home. The need is great and Heads On is working closely with CAMHS and our voluntary sector colleagues to build on this programme, as we work across our services to proactively manage and reduce our waiting lists.

Heads On's strength is in its approach to working in our communities. Combe Valley Hospital is our new hospital currently under construction in Bexhill to serve the community of East Sussex in times of mental health crisis. Heads On's work to enhance the Hospital through fundraising will ensure people can access the very best healing and therapeutic environment for their recovery. The charity's partnership with Recovery Partners to undertake Flourish is one example. This user led research looked at how people with severe mental illness would like to access nature based recovery as inpatients and on discharge into the community. It tells us how important nature is to mental health recovery and the barriers people can face to access. Heads On's work to implement the recommendations of Flourish will help create a hospital where nature is at the heart of recovery.

When we reflect on the achievements of the past 5 years, what is striking is how much Heads On's work has transformed since 2020, embracing external grant making, partnerships across healthcare, academia, sport and the arts, strategic programmes to address difficult problems like waiting lists and a continued commitment to supporting day to day life in mental health services. The breadth of

work for a small charity team is something we are immensely proud of. Thank you to the team, for everything you do.

As we look to the future, and the development of a closer partnership with Sussex Partnership and the wider health care system in Sussex, we must ensure we build on the lessons of the past 5 years whilst at the same time being mindful of taking a more targeted approach to our work. With a small team, we will have the greatest impact when we are closely aligned with our parent Trust, embedded in our communities and focus our work where it is needed most. We look forward to launching our new strategy in 2025.

The NHS was founded to support the nation's health and provide universal healthcare for everyone. What is certain, is that in these challenging times the NHS is needed now more than ever. Heads On has a vital role to play in supporting NHS mental health recovery across Sussex. We are indebted to the many people in our communities who support our work. From the bottom of our hearts, thank you.

Sean Duggan, OBE

Chair of Sussex Partnership NHS Foundation Trust and the Charitable Funds Committee

Dr Jane Padmore (RMN)

Chief Executive Officer, Sussex Partnership NHS Foundation Trust

"Thank you to the team, for everything you do."

Message from the Charity Director Rachael Duke



When someone experiences a mental health problem, their recovery can extend far beyond mental health services, and the role of communities is essential in building a world where it is possible to live well with mental health problems, rather than being defined by them.

As the transformation of community mental health services continues apace, support for grassroots voluntary sector programmes becomes increasingly important as we work hand in hand to address the health inequalities faced by so many. Our grant commitments of £125,000 in the infrastructure development of mental health voluntary sector organisations, to be spent by the end of March 2025, represented a real recognition of the important role they play in healthcare as valued partners. £50,000 of this investment was prioritised for the growth of minority ethnic led partners and we are keen to see the impact of this funding.

A key role Heads On can play is that of a critical friend to Sussex Partnership, working alongside the Trust to develop new approaches to difficult problems. Living Histories is our oral history project, capturing the whole life stories of people who have used and worked in NHS mental health services in Sussex since the closure of the old asylums up to the present day. There is much to learn from the rich history of community based mental health services and central to this is ensuring we place people's mental health problems within the contexts of their whole lives. We are grateful to the National Lottery Heritage Fund and NHS Charities Together for funding this important work and look forward to public exhibitions of the project in 2025.

It is an uncomfortable truth that people with severe mental illness's life expectancy is 15-20 years shorter than that for the general population due to their physical health needs not being met. This year we made our first Heads On Futures Fund award, testing the impact of embedding exercise therapists in West Sussex mental health inpatient settings, seeking to both improve people's physical health and support their mental health recovery. We are

keen to see the results of this pilot; central to its evaluation will be judging its success on patients' own terms - they know best what is right for them.

As Heads On develops its new strategy for 2025-30 we know that the barriers to mental health recovery are many and complex, exacerbated by disadvantage and poverty. It is essential that we move forwards with a clearly focused approach, targeting our resources where they are needed most. Key to our success as a small team will be protecting and prioritising our fundraising resources to ensure greater impact for people with mental illness - we know that when we deploy our fundraising staff to other work, we feel an immediate impact in fundraising success, no matter how important the redeployment. We must be mindful moving forwards of this balance.

The last 5 years have shown us that working in partnership in our communities is when we are at our strongest. It is when we come together as a community that we can amplify the voices of people with mental health problems and make a real difference to how people can live their lives. Key to this community are our partners, funders and supporters - thanks to you we can invest in mental health innovation for the future that breaks down the stigma and barriers around mental health and recovery. We can't say thank you enough.

Rachael Duke
Charity Director

Charity Objectives & Activities



Heads On's strategy 2021–2025 focuses on:

- **Health Inequalities and how to address them.**
- **Championing the needs, rights and voices of people who use mental health, learning disability and neurodevelopmental services, challenging stigma and discrimination.**
- **New opportunities that support recovery through the arts, sports and education.**

Charity Objectives & Activities

Heads On is governed by a Declaration of Trust and exists to support any charitable purpose or purposes relating to the National Health Service and particularly the Mental Health Sector that would not normally be covered by main NHS funds. We are the official charity of Sussex Partnership NHS Foundation Trust and a member of NHS Charities Together.

Heads On develops, fundraises for and supports projects that empower people with mental health problems, learning disabilities and neurodivergent conditions in their journeys, building a more equal world for everyone. To ensure Heads On can react swiftly to emerging needs, the Charity pay particular attention to ensuring continuing unrestricted donations.

We work tirelessly to enhance NHS services through charitable giving, in accordance with our charitable objects, paying due regard to guidance from the Charity Commission. We pride ourselves on fundraising consciously, by making sure donations truly add value to service users' experience and all expenditure is carefully considered.



**We funded a garden shed for
Langley Green Hospital**

Trustees award grants to projects delivered by Sussex Partnership NHS Foundation Trust and external partners that support people with mental health problems in their recovery or address healthcare needs within the wider population. This can also include supporting projects for staff that will improve patients' experience. Grants are only awarded through published funding programmes and unsolicited applications are not accepted.

The monies required to support our work are secured through fundraising from our local communities, charitable trusts and foundations, individual donors, corporate sponsors and from grant making bodies.

Our parent NHS Trust, Sussex Partnership, provides mental health, learning disability and neurodevelopmental services to people living in South East England. Its services are for children, young people, adults of working age and older people.

The Trust provide care in a range of locations including people's own homes, specialist clinics, hospitals, low and medium secure units and GP surgeries.

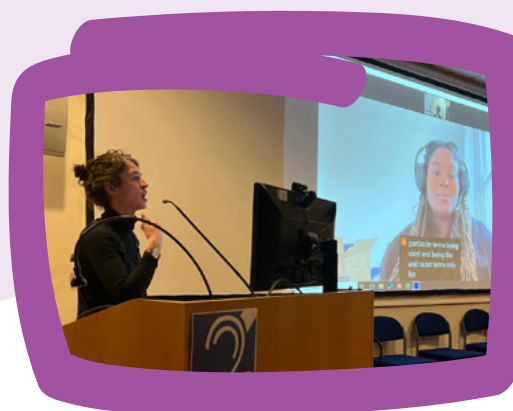
Sussex Partnership is passionate about research and aims to put it at the core of everything they do to continually improve clinical care. The Trust is a member of the University Hospital Association and part of the Sussex Health and Care integrated system.

Review of the Year

Achievements and Performance



Sussex Community Partnership Grants



The NHS Long Term Plan recognises the vital role the voluntary sector plays in supporting people to stay well in their communities and our Community Partnership Grants saw 9 projects delivered across Sussex ranging from More Than Football, a suicide prevention programme for middle aged men, through to hospice at home programmes for children and young people across Sussex. Our external evaluation across all projects told us that the programme impacts include:

- **Improved mental and physical wellbeing**
- **Building new friendships and reduced feelings of isolation**
- **Reduced hospital admissions**
- **Improved family support and autonomy for patients**
- **Improved quality and confidence around supporting young people with complex needs**
- **Better equipped to deal with racism at work.**

During 2023/24 Heads On's core focus has been completing our final Covid-19 programmes, delivered on behalf of NHS Charities Together across Sussex, that have seen over £830,000 invested in work across the voluntary sector to support people with long term conditions, address health inequalities and focus on suicide prevention both during the pandemic and beyond.

9

partners funded

5,911

grant programme
beneficiaries

800

people working in health
and social care attended
anti-racism training

49%

beneficiaries benefitted from
programmes tackling health
inequalities

4%

beneficiaries accessed
programmes to support
hospital discharge and
prevent admission

47%

beneficiaries received
suicide prevention
interventions

Funded projects

- Brighton and Hove Albion Foundation's (BHAF) More than Football
- Martlets Hospice Group's Specialist community support for patients at end-of-life
- Demelza Hospice Care for Children & Chestnut Tree House Children's Hospice Care Oncology end-of-life care for children
- Trust for Developing Communities' (TDC) Health for All
- Crew Club's Choose to Move
- 4Sight Vision Support's Wellbeing support and suicide prevention
- Crawley Community Action's (CCA) Living Healthier Lives
- Extratime
- Amaze's Community Outreach Groups and Support
- Heads On anti racism training programme



More than Football project lead Stewart Teeder being interviewed pitch side at the Amex stadium promoting men's mental health



Women from the South Asian community participating in the Crawley Community Action Health Expo 2023, learning about health services and enjoying a fun day of wellbeing activities.

Sussex Community Partnership Grants

proof of concept for sustainable services

One of the ongoing challenges faced by healthcare voluntary sector partners can be the challenge in funding innovative work that can be moved into business as usual, attracting commissioning funding for ongoing sustainability. We are pleased that two of the projects awarded Community Partnership Grants were able to use Heads On funded work to leverage sustained investment and growth into their work.

Case Study

Health for All

A partnership between Trust for Developing Communities, the Hangleton & Knoll Project and Speakout



Health for All created peer-led, clinician-supported groups to address health inequalities in deprived areas, focusing on specific conditions, with a commitment to ensuring inclusion of minoritised ethnic and learning-disability communities.

The project was delivered in partnership with local organisations in two targeted, economically deprived, geographically isolated areas of Brighton and Hove which experience the greatest health inequalities and are located far from City centre facilities and services:

1. Whitehawk, Manor Farm and Bristol Estate

2. Hangleton, Knoll and Ingram Estates

The project delivered:

- **Diabetic Peer Support Groups**
- **Menopause peer support group**
- **Hypertension and home blood pressure monitoring**
- **Minoritised ethnic people's engagement in health groups**
- **Learning Disability engagement in health activity.**

Trust for Developing Communities, together with the the Hangleton and Knoll Project, were successful in securing further funding for the Diabetes monthly peer networks also delivered across Brighton and Hove. Some of the groups were also able to become self-sustaining and have continued with positive impact within their communities. Speakout has continued to deliver Learning Disability sessions across both the East and west of the City.

Case Study of Support for Individual Community Member:

L was asked to report on their blood sugar levels over a week in case they required insulin. The form was digital and her only digital device was her phone on which the form was hard to read/ use.

The group helped redesign the form to something more user friendly, including a glossary of food items so the diet record was easier to complete. As a result they are now monitoring their food and sugar levels more closely and managing their condition better. L is now working on a health plan with a 1:1 health trainer they met at the health event. This has also enabled more informed discussions across the group about food items that cause spikes in sugar levels.

"I've been feeling down on myself giving into sugar cravings and have started choosing humous and vegetable dips which make me feel things are changing."





Demelza Hospice Care for Children and Chestnut Tree House Children's Hospice Care are the two children's hospices that serve Sussex and used Heads On funding to pilot their first oncology-focussed service, enabling children and young people with cancer to receive end of life care at home should they wish to spend their last days, weeks or months out of hospital.

The new service was developed during the pandemic and delivered through a 24-hour on-call rota between Demelza, Chestnut Tree House and the NHS Community Nursing Team. This team of Specialist Paediatric Nurses can deliver the clinical care and pain relief needed (usually via a syringe driver) to make the child comfortable and pain free in their own home. This type of specialist end of life care can only be delivered by trained nurses and if this team could not provide it, the child would have to die in hospital irrespective of their wishes.

The pilot project enabled the hospices and NHS Community Nursing Team to test this new service for young cancer patients and Demelza has since gone on to acquire two further rounds of funding to extend their oncology services and is in the process of developing a long-term funding partnership to allow them to provide this service in neighbouring Kent. The NHSCT grant was "absolutely pivotal" in achieving this, for three reasons. First, it provided an opportunity to try a new way of working that focussed on a specific group of patients; something which they otherwise would have been unlikely to do, and which has given them a new perspective in their approach. Second, it helped them to understand more about building relationships with funders, which in turn has enabled them to establish a new long-term relationship with another funder. Third, the data reporting required as part of the Heads On grant has encouraged Demelza to analyse their caseload with greater detail and use this to provide clear evidence of their impact.

As we close our final Covid-19 programmes it is important to note the huge shift in focus this work brought to Heads On, and the lasting legacy of an NHS charity with partnership woven into its DNA. As the charity's first large scale external grant making programme, it built partnerships with organisations across Sussex that the charity continues to work with and cemented the charity's strategic relationship with Sussex Partnership. Most importantly, it developed a way of working that stands Heads On in good stead moving forwards to make a real contribution to the recommendations of the Darzi review on the importance of addressing the impact of the social determinants of health on health and health inequalities.

Case Study

Oncology referrals end of life care for children

A partnership between Demelza Hospice Care for Children & Chestnut Tree House Children's Hospice Care

Over the last 12 months we have:



Awarded £75,000

in grants to support the growth of voluntary sector mental health organisations, helping them to be more:

- Effective
- Sustainable
- Innovative

Awarded £50,000

to Diversity Resource International to support the development of minority ethnic led grassroots voluntary sector organisations by leaders with lived experience of racial inequalities.

Awarded £20,000

to pilot the impact of exercise therapists in mental health inpatient settings.

Awarded £71,028

in grants across Sussex Partnership to improve day to day life for staff and patients including:

- Creative recovery 58%
- Enabling participation in groups & workshops 9%
- Kit and equipment 24%
- Improving the therapeutic environment 9%

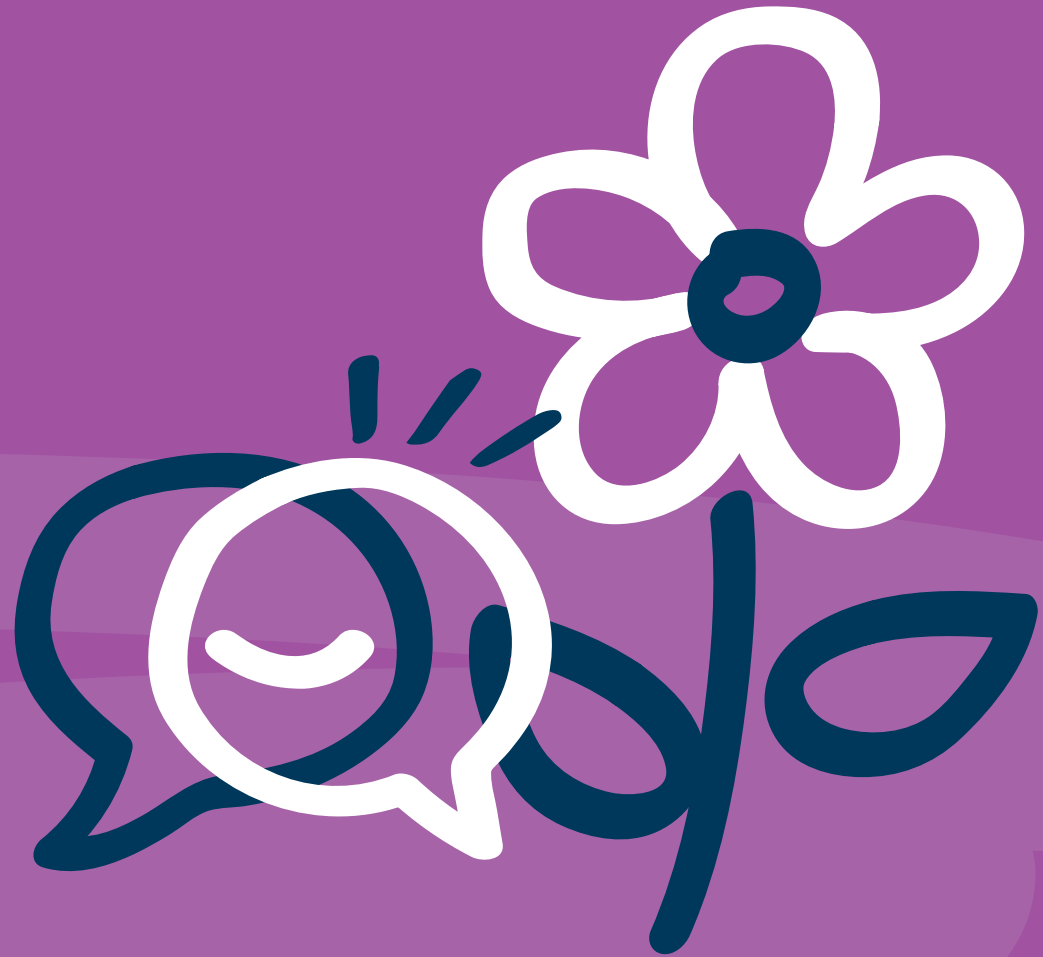
Launched Living Histories

funded by National Lottery Heritage Fund and NHS Charities Together, our oral history project documenting the whole life stories of people who have used and/or worked in NHS mental health services since the 1980s.

Delivered Flourish

in partnership with Recovery Partners: user led research into nature based recovery for people with severe mental illness.

Creative Recovery



Living Histories

Documenting the whole life stories of people who have used and/or worked in NHS mental health services

"I got involved with Living Histories as I think talking about your mental health and sharing your story is massively important. I am an advocate of dispelling the stigmas and societal shame associated with mental health illnesses and urge people to be open and honest about their own mental health. Living Histories will help with a lot of learnings by listening to the community's life stories from all walks of life across Sussex. Ultimately, we're People first. Diagnosis second."



I'm really enjoying being a part of the team as myself and others are bringing our own lived experiences and suggesting ideas and questions which wouldn't have necessarily been thought of from a 'neuro-typical' person. I'm excited to seeing the fruits of our labour at the end."

Oliver Vantini, Expert By Experience working on the Living Histories Project.

In 2023 Heads On was delighted to secure funding from the National Lottery Heritage Fund and NHS Charities Together to support Living Histories. Our first oral history project will capture the whole life stories of people who have used and/or worked in NHS mental health services following the closure of the old asylums in the 1980s up to and including the Covid-19 pandemic.

This is a period in the history of NHS mental health services rarely documented in oral history, and yet there is much to learn from care in the community since its inception through to the transformation of NHS community mental health services in the present day.

People who use mental health services tell us often that they want their mental health to be seen in the context of their whole lives; ensuring that their care and treatment is just one important part of their story. The desire to break down the stigma of mental health has never been greater and by capturing people's stories in their own words we can amplify stories and histories that would otherwise be lost.

Living Histories is recruiting participants in Autumn 2024 with public exhibitions to be held in Spring/ Summer 2025.

Flourish

User-led research into nature based recovery for people living with severe mental illness

In Autumn 2023 we commissioned Recovery Partners, a small user-led grassroots mental health charity working in East Sussex to undertake user-led research into nature recovery for people with severe mental illness. The research will directly inform how NHS mental health services incorporate natural recovery into their services, including Sussex Partnership's new Combe Valley Hospital in East Sussex, and how engagement with natural recovery can be supported to continue in the community on discharge.

Flourish: Nature recovery for people living with severe mental illness is the result of that commission and was funded by Natural England, Heads On and Recovery Partners.



"It [nature] allowed me to feel connected to something, and to see colours and breathe fresh air, making me feel lighter during a very difficult time"

Research participant

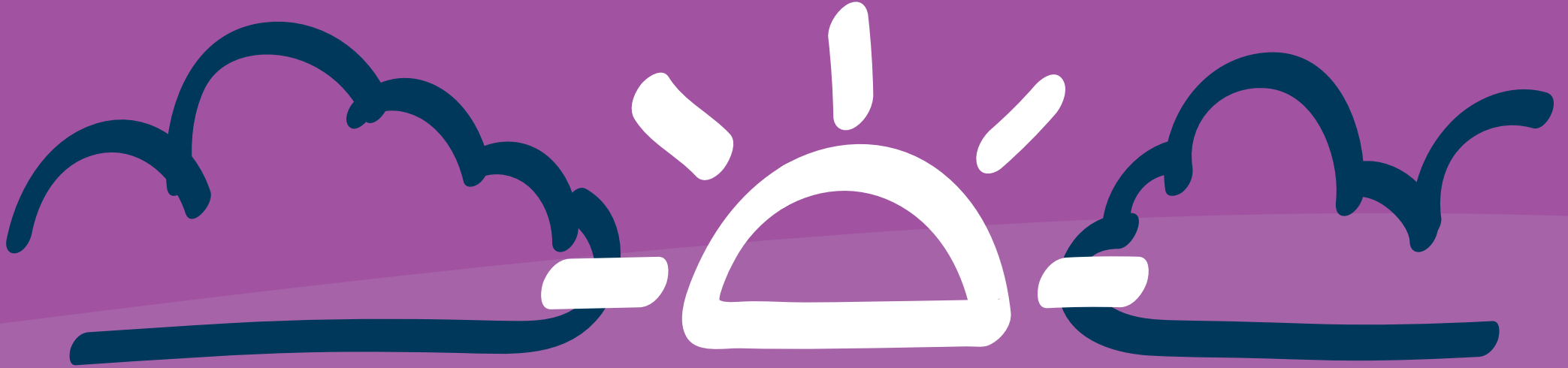
It is clear from the research that nature-based recovery plays a key part in people's recovery journeys, both as inpatients and in the community following discharge. Participants talked at length about the importance of having choices in accessing nature, emphasising the therapeutic richness of natural spaces and suggesting many imaginative solutions to improve mental health environments.

Key recommendations include:

- Design inspiring outdoor spaces that invite engagement with nature
- Design spaces and opportunities for gardening and food growing
- Design places for rest, solitude and socialising
- Provide opportunities for observation of nature and interaction with wildlife
- Provide opportunities for outdoor physical activity, exercise classes and play
- Develop connections to community garden and nature projects

The Combe Valley Hospital has been designed with nature in mind, celebrating the beautiful surroundings of the site; these recommendations support us to develop the plans even further, working closely in partnership with Sussex Partnership to build an environment that celebrates the role that nature can play in mental health recovery and putting the voice of lived experience at the heart of this work.

Looking to the Future



Looking to the Future

As we closed our final Covid-19 external grant programmes this year it has been important to reflect on everything Heads On has achieved during the last 5 years, cementing our strategic partnership with our parent NHS Trust and building relationships across the voluntary sector that have made a genuine difference to the support available to our communities during the pandemic.



The Covid-19 pandemic and its aftermath required us to think, work and develop differently. It amplified the role of NHS charities as strategic partners in healthcare and accelerated the drive to define what Sussex Partnerships needs from its charity partner. As we develop our strategy for 2025-30 Heads On must deliver on its commitment to be a conduit and enabler of partnership working with the wider voluntary sector; deliver strategic funding for service improvements; build a pipeline for innovation

through project development and retain a charity team that can work across organisational boundaries and cultures to achieve our potential.

At the same time, our team has reduced to 3.2 staff and we need to work smarter to ensure we continue to achieve our objectives. 2023-24 was the culmination of our external grant making programmes on behalf of both NHS Charities Together and Sussex Health & Care. Both

programmes required us to pivot our fundraising team to external grant making, which has inevitably impacted on our fundraising income. Looking to the future, we must ensure we protect our fundraising capacity and take a strategic approach to income generation.

Our commitment to improving day to day life in Sussex Partnership services continues, this year we have invested £71,028 in programmes across the trust, the majority funded by community fundraising and our events programme. With continuing pressure on NHS budgets, this remains an important part of our work and the introduction of events such as our i360 drop which raised £9,669 demonstrates that a fresh approach to our fundraising has the potential to significantly increase the range of work we can support.

Our strategy for 2025-30 will set out our ambitions for the next 5 years, aligned with Sussex Partnership's vision to deliver great care and improve outcomes together. Key to our ability to achieve this will be our continued skill in securing funding from and working with strategic partners. Grants from the National Lottery Heritage Fund and Natural England this year are testament to this, both funding projects that amplify the voices of people with severe mental illness, placing them at the heart of healthcare development.

As we move forwards, in times of significant pressure and change for the NHS, we must reinforce our commitment to bridging the gap between the NHS and the voluntary sector, working hand in hand with our communities and, most importantly, placing people with lived experience at the heart of everything we do - they know best the impact we need to have.

Financial Review



Financial Review

Total operating income for the financial year was £469k (2022/23: £460k).

Donated income includes a grant from Sussex Partnership NHS Foundation Trust of £250k (2022/23: £219k) to fund the operational costs of the charity.

The reduction in fundraised income of **£63k** compared to 2022/23 is in part attributable to the continued deployment of the charity's fundraising staff to both completing external grant programmes which closed this year and direct programme delivery, thus reducing fundraising activity in year. The charity's ROI for fundraising activity this year was 3:1.

At the same time the fundraising marketplace continues to be particularly challenging and the charity is developing a fresh approach to fundraising as part of its 2025-30 strategy.

Expenditure for the year was £762k (2022/23: £526k) as follows:

Charitable Activities £512k

(2022/23: £306k)

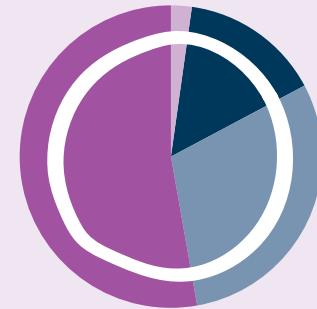
Support Costs £195k (2022/23 £115k)

Raising Funds £55k (2022/23 £105K)

Increased support costs reflect the management of external grants programmes which the charity was commissioned to deliver, alongside increasing direct programme delivery by the charity. Within the grant programmes, whilst significant grant commitments have been made as detailed in note 5 of the accounts, these are not yet shown as expenditure within the accounts.

As an active NHS charity, predominantly funding projects within our parent NHS Trust and making external grants with restricted donations, our annual expenditure sometimes exceeds our income as we spend funds that we have held over time or restricted donations that are fundraised for specific, time-limited programmes. When these funds are spent they are not routinely replenished, particularly if they are restricted for specific projects or services.

The statement of financial activities shows net expenditure for the year of £294k (2022/23: £65k) and net gains on investments of £28k (2022/23: £14k net loss).



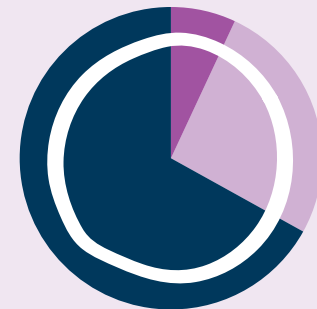
INCOME

30% Donations/Grants

53% NHS Donation

2% Dividends

15% Interest



EXPENDITURE

7% Raising Funds

67% Charity Activities

26% Support Costs

Investments: including Investment Strategy and Performance

The balance sheet consists predominantly of investments, including cash and within stocks and shares.

The committee continues to adopt a low risk investment strategy when dealing with short term investment of donated monies, with current asset investments totalling **£96k** (2022/23 £269k). Heads on has continued its investment strategy during the year to include some long term equity investments to help improve the returns against its endowment funds which totalled **£440k** (2022/23 £412k) at the year end. The equity investments increased in value during 2023/24 due to improved investment portfolio performance.

The endowment funds of **£440k** are invested in equity investments as detailed above.

Restricted Funds

Restricted funds of the Charity total £766k (2022/23: £1,094k) and are detailed in full in Note 10 to the accounts.

A transfer from Endowment to Restricted funds has been accounted for in the year to separately identify the accumulated income from the Kitty Harrison Endowment Fund. The restricted Kitty Harrison fund can be spent on supporting dementia patients as per the donor's wishes.

Reserves Policy – note 5 support costs

The Charity seeks to apply all funds received in an efficient and timely manner.

The Charity is mainly reliant on the generous goodwill of the local population and organisations through their donations and legacies. The holding of reserves allows for planned expenditure to progress as intended, uninhibited by the volatility of income levels from year to year.

The level of reserves held is determined by reference to future spending plans. This applies not only to general funds but also to the level of restricted funds, in the context of their terms of reference.

Funds are not allowed to accumulate except where plans may require sufficient funds to be initially collected, either by appeal or through the gradual build-up of donations before expenditure occurs. The Charity considers that it has met its reserves policy during the period, holding free reserves of **£206k** (2022/23 £123k) at the year end.

Financial Control and Risk Management

The Trust's Standing Orders and Financial Instructions apply in full to the operation of the Charitable Funds, which are subject to periodic review.

The Corporate Trustee fulfils its legal duty by ensuring that funds are spent in accordance with the objectives of each fund. By designating funds in this way the Trustee is able to respect the wishes of the donors.

The Trustee has also paid due regard to the Charity Commission guidance on public benefit.

The Trustee has complied with the duty in section 17(5) of the 2011 Charities Act to have due regard to guidance published by the Charity Commission.



Unaudited Annual Accounts **for the year ended 31st March 2024**

The accounts have been prepared in accordance with Charities SORP FRS102, Accounting Standards and with the Charities Act 2011.

Statement of Trustees' responsibilities

for the year ended 31 March 2024

The members of the Corporate Trustee are responsible for preparing the Trustees' report and the financial statements in accordance with applicable law and United Kingdom Accounting Standards (United Kingdom Generally Accepted Accounting Practice).

The law applicable to charities in England & Wales requires the members to prepare financial statements for each financial year which give a true and fair view of the state of affairs of the Charity and of its incoming resources and application of resources, including its income and expenditure, for that period. In preparing these financial statements, the members are required to:

- **select suitable accounting policies and then apply them consistently;**
- **observe the methods and principles of the Charities SORP (FRS 102);**
- **make judgments and accounting estimates that are reasonable and prudent;**
- **state whether applicable UK Accounting Standards (FRS 102) have been followed, subject to any material departures disclosed and explained in the financial statements;**
- **prepare the financial statements on the going concern basis unless it is inappropriate to presume that the Charity will continue in business.**

The members are responsible for keeping adequate accounting records that are sufficient to show and explain the Charity's transactions and disclose with reasonable accuracy at any time the financial position of the Charity and enable them to ensure that the financial statements comply with the Charities Act 2011, the Charity (Accounts and Reports) Regulations 2008 and the provisions of the Trust deed. They are also responsible for safeguarding the assets of the Charity and hence for taking reasonable steps for the prevention and detection of fraud and other irregularities.

**Approved by order of
the members of the board
of Trustees and signed on
their behalf by**

Dr Jane Padmore
Chief Executive Officer

Date **23 January 2025**

Sean Duggan, OBE
Chair

Date **23 January 2025**

Independent Examiner's report to the trustees of Heads On

for the year ended 31 March 2024

INDEPENDENT EXAMINER'S REPORT TO THE TRUSTEES OF HEADS ON

I report to the trustees on my examination of the accounts of Heads On for the year ended 31 March 2024.

RESPONSIBILITIES AND BASIS OF REPORT

As the charity trustees of the Trust you are responsible for the preparation of the accounts in accordance with the requirements of the Charities Act 2011 ('the Act').

I report in respect of my examination of the Trust's accounts carried out under section 145 of the 2011 Act and in carrying out my examination I have followed all the applicable Directions given by the Charity Commission under section 145(5)(b) of the Act.

INDEPENDENT EXAMINER'S STATEMENT

Since the Charity's gross income exceeded £250,000 your examiner must be a member of an appropriate body. I confirm that I am qualified to undertake the examination because I am a member of the ICAEW, which is one of the listed bodies.

I have completed my examination. I confirm that no material matters have come to my attention in connection with the examination giving me cause to believe that in any material respect:

- 1 accounting records were not kept in respect of the Trust as required by section 130 of the Act; or**
- 2 the accounts do not accord with those records; or**
- 3 the accounts do not comply with the applicable requirements concerning the form and content of accounts set out in the Charities (Accounts and Reports) Regulations 2008 other than any requirement that the accounts give a 'true and fair view which is not a matter considered as part of an independent examination.'**

I have no concerns and have come across no other matters in connection with the examination to which attention should be drawn in this report.

Lucy Hammond BSc FCA

Date: **27 January 2025**

For and on behalf of Kreston Reeves
Kreston Reeves LLP Chartered Accountants
9 Donnington Park
85 Birdham Road
Chichester
West Sussex
PO20 7AJ

Statement of financial activities

(incorporating the income and expenditure account) for the year ended 31 March 2024

	Note	Unrestricted funds (£)	Restricted funds (£)	Designated funds (£)	Endowment funds (£)	Total this year (£)	Total last year (£)
Income and endowments from:							
Donations and legacies	3	21,535	350,746	20,249	-	392,530	424,948
Investments	3	65,691	10,372	-	-	76,063	35,491
Total		87,226	361,118	20,249	-	468,593	460,439
Expenditure on:							
Raising funds	4	-	54,802	-	-	54,802	104,520
Charitable activities	4	4,312	680,202	23,032	-	707,546	421,188
Total		4,312	735,004	23,032	-	762,348	525,708
Net income/ (expenditure)		82,914	(373,886)	(2,783)	-	(293,755)	(65,269)
Transfers between funds*		-	46,252	-	(46,252)	-	-
Net movement in funds		82,914	(327,634)	(2,783)	(46,252)	(293,755)	(65,269)
Other recognised gains/(losses)							
Net gains and (losses) on investment assets	7	-	-	-	28,229	28,229	(14,373)
Net movement in funds		82,914	(327,634)	(2,783)	(18,023)	(265,526)	(79,642)
Reconciliation of funds:							
Total funds brought forward		122,917	1,093,565	184,578	458,418	1,859,478	1,939,120
Total funds carried forward		205,831	765,931	181,795	440,395	1,593,952	1,859,478

All activities undertaken at the year-end were continuing operations.

*A transfer from Endowment to Restricted funds has been accounted for in the year to separately identify the accumulated income from the Kitty Harrison Endowment Fund. The restricted Kitty Harrison fund can be spent on supporting dementia patients as per the donor's wishes.

Balance Sheet

as at 31 March 2024

	Note	Unrestricted funds (£)	Restricted funds (£)	Designated funds (£)	Endowment funds (£)	Total this year (£)	Total last year (£)
Fixed assets							
Investments	7	-	-	-	440,395	440,395	412,165
Total fixed assets		-	-	-	440,395	440,395	412,165
Current assets							
Debtors	8	-	157,226	-	-	157,226	313,442
Investments	7	-	96,098	-	-	96,098	268,819
Cash at bank and in hand		205,831	1,057,608	181,795	-	1,445,234	1,089,445
Total current assets		205,831	1,310,932	181,795	-	1,698,558	1,671,706
Creditors: amounts falling due within one year	9	-	545,001	-	-	545,001	224,393
Net current assets		205,831	765,931	181,795	-	1,153,557	1,447,313
Total assets less current liabilities		205,831	765,931	181,795	440,395	1,593,952	1,859,478
Total net assets		205,831	765,931	181,795	440,395	1,593,952	1,859,478
Funds of the Charity							
Unrestricted funds	10	205,831	-	-	-	205,831	122,917
Restricted income funds	10	-	765,931	-	-	765,931	1,093,565
Endowment funds	10	-	-	-	440,395	440,395	458,418
Designated funds	10	-	-	181,795	-	181,795	184,578
Total charity funds		205,831	765,931	181,795	440,395	1,593,952	1,859,478

Signed by

Dr Jane Padmore

Member of the Corporate Trustee

Date of approval **23 January 2025****Sean Duggan, OBE**

Member of the Corporate Trustee

Date of approval **23 January 2025**

Statement of Cash Flows

for the year ended 31 March 2024

	Note	Total funds (£)	Prior year funds (£)
Cash flows from operating activities:			
Net cash provided by (used in) operating activities	1	107,006	(40,332)
Cash flows from investing activities:			
Interest receivable		65,691	25,907
Dividends received		10,372	9,584
Sale/(Purchase) of investments		-	-
Net cash provided by (used in) investing activities		76,063	35,491
Cash flows from financing activities:			
Repayments of borrowing		-	-
Cash inflows from new borrowing		-	-
Receipt of endowment		-	-
Net cash provided by (used in) financing activities		-	-
Change in cash and cash equivalents in the reporting period		183,068	(4,841)
Cash and cash equivalents at the beginning of the reporting period	2	1,358,264	1,363,105
Change in cash and cash equivalents due to exchange rate movements		-	-
Cash and cash equivalents at the end of the reporting period	2	1,541,332	1,358,264

Statement of Cash Flows – Notes

Note 1 • Reconciliation of net income/(expenditure) to net cash flow from operating activities

	Current year (£)	Last year (£)
Net income/(expenditure) for the reporting period (as per the statement of financial activities)	(265,526)	(79,642)
Adjustments for:		
Interest receivable	(65,691)	(25,907)
Dividends received	(10,372)	(9,584)
Gains on investments	(28,229)	14,373
(Increase)/decrease in debtors	156,216	266,592
Increase/(decrease) in creditors	320,608	(206,164)
Net cash provided by (used in) operating activities	107,006	(40,332)

Note 2 • Analysis of cash and cash equivalents

	Current year (£)	Last year (£)
Cash in hand & at bank	1,541,332	1,358,264
Held as current assets	1,445,234	1,089,445
Held within investments	96,098	268,819
Total	1,541,332	1,358,264

Notes to the accounts

Note 1 • Basis of preparation

1.1 Basis of accounting

These accounts have been prepared on the basis of historic cost (except that investments are shown at fair value) in accordance with:

- **The accounts have been prepared in accordance with Accounting and Reporting by Charities: Statement of Recommended Practice applicable to charities preparing their accounts in accordance with the Financial Reporting Standard applicable in the UK and Republic of Ireland (FRS 102) (effective 1 January 2019) – (Charities SORP (FRS 102)), the Financial Reporting Standard applicable in the UK and Republic of Ireland (FRS 102) and with the Charities Act 2011.**

In accordance with the Charities SORP (FRS 102) the charity is claiming exemption from the requirement to prepare a cash flow statement on account of it being a small charity.

The functional currency of the charity is pounds sterling and items are rounded to the nearest pound.

1.2 Change in basis of accounting

There has been no change to the accounting policies (valuation rules and methods of accounting) since last year.

1.3 Going Concern

The trustees consider that there are sufficient secured donations post year end and that there are no material uncertainties about the Trust's ability to continue as a going concern.

1.4 Legal Information

Legal information regarding the charity can be found within the annual report.

Notes to the accounts

Note 2 • Accounting policies

INCOMING RESOURCES

Recognition of income – These are included in the Statement of Financial Activities (SoFA) when:

- the charity becomes entitled to the resources;
- it is probable the resources will be received;
- the monetary value can be measured with sufficient reliability.

Income with related expenditure – Where incoming resources have related expenditure (as with fundraising or contract income) the incoming resources and related expenditure are reported gross in the SoFA.

Grant accounting policy – Grants and donations are only included in the SoFA when the charity has unconditional entitlement to the resources amounts can be measured reliably and it is probable that funds will be received.

Tax reclaims on donations and gifts – Income from tax reclaims are included in the SoFA at the same time as the gift to which they relate.

Contractual income and performance related grants – This is only included in the SoFA once the related goods or services have been delivered.

Donated services and facilities – These are only included in income (with an equivalent amount in resources expended) where the benefit to the charity is reasonably quantifiable, measurable and material. The value placed on these resources is the estimated value to the charity of the service or facility received.

Volunteer help – The value of any voluntary help received is not included in the accounts but is described in the trustees' annual report.

Investment income – This is included in the accounts when receivable.

Endowment Income – Endowment income is unrestricted.

EXPENDITURE AND LIABILITIES

Liability recognition – Liabilities are recognised as soon as there is a legal or constructive obligation committing the charity to pay out resources.

Support costs – Include costs of the preparation and examination of statutory accounts, the cost of any legal advice to trustees on governance or constitutional matters. They also

include central functions and have been allocated to activity cost categories on a basis consistent with the use of resources, e.g. allocating property costs by floor areas, or per capita, staff costs by the time spent and other costs by their usage.

Grants with performance conditions – Where the charity gives a grant with conditions for its payment being a specific level of service or output to be provided, such grants are only recognised in the SoFA once the recipient of the grant has provided the specified service or output.

Grants payable without performance conditions – These are only recognised in the accounts when a commitment has been made and there are no conditions to be met relating to the grant which remain in the control of the charity.

EXPENDITURE AND LIABILITIES

Accumulated Funds – Restricted and Permanently Endowed funds are subject to specific conditions by donors as to how they may be used. The purposes and uses of the restricted funds are set out in the notes to the accounts. 31% (2022/23 24%) of accumulated funds were held as Permanent Endowment Funds at the end of the year.

ASSETS

Fixed assets – The charity holds no property, equipment or heritage assets.

Investments – Quoted stocks and shares are initially recognised at fair value which is normally the transaction price excluding transaction costs. Subsequently they are measured at fair value at the balance sheet date. The Statement of Financial Activities include net gains and losses arising on revaluation and disposals throughout the year.

Debtors – Trade and other debtors are recognised at the settlement amount due after any trade discounts offered. Prepayments are valued at the amount prepaid net of any trade discounts due.

Cash at bank and in hand – Cash at bank and in hand includes cash and short term highly liquid investments. The Trustees seek to use short and medium term deposits where possible to maximise the return on monies held at the bank and to manage cash flow.

Investments – Investments are held at fair value and all mature within less than one year.

Notes to the accounts

Note 3 · Analysis of income

	This year (£)	Last year (£)
Donations and legacies		
Donations/ grants	142,812	205,635
Donation from NHS Trusts	249,718	219,313
Legacies	-	-
Total	392,530	424,948
Investments		
Bank Interest	65,691	25,907
Dividends received	10,372	9,584
Total	76,063	35,491

Note 4 · Analysis of expenditure

	This year (£)	Last year (£)
Raising funds		
Salary costs - Gross Pay	28,117	58,105
Salary costs - NI	5,623	11,621
Salary costs - Pension	3,749	7,747
Database costs	75	2,308
Other costs	17,238	24,739
Total	54,802	104,520
Charitable activities		
Patient Welfare & Amenities	512,630	306,395
Support costs (Note 5)	194,916	114,793
Total	707,546	421,188

Notes to the accounts

Note 5 · Support costs

	This year (£)	Last year (£)
Management & Administration – Salary Costs	142,771	90,490
Management & Administration – NI	28,554	9,527
Management & Administration – Pension	19,036	10,491
Annual Accounts / Examiner Fees / Bank Charges	4,555	4,285
Total	194,916	114,793

Included under support costs above, are **£3,000** (2022/23 £2,874) of governance costs, which relate to examiners fees.

At the end of 2023/24 there was approx **£716k** (22/23 £737K) of bids which had been approved but not yet spent.

These outstanding bid amounts mainly relate to the following funds

MH Collaborative Grants Programme	£341,928
Grants and Programme Manager	£92,452
Oral History NHSCT/HLF	£40,289
The Estate of Michael Joseph Czerwik	£39,913
NHS Charities Together Stage 2 – Partners Fund	£32,103
Chalkhill Rockinghorse Fund	£27,914
NHS Charities Together Stage 3 Award	£23,055
Health Foundation	£15,929
General - SPFT Charity	£14,790
GoodSpace DCMS volunteering project	£13,757

Heads On is a fundraising and grant making charity and has no staff employed by the charity. Sussex Partnership NHS Foundation Trust (SPFT) provide all administration and clerical services to the charity, including fundraising, which the Trust fund through a grant to the charity. All staff costs and pension contribution liabilities that may arise are solely the responsibility of SPFT.

The average number of staff during the year was equivalent to **3.2 full time staff** (4.6 in 2022/23).

There were no employees with annual remuneration over **£60,000** (Nil in 2022/23).

Notes to the accounts

Note 6 • Details of certain items of expenditure

6.1 Trustee expenses

	This year	Last year
Number of trustees who were paid expenses	None	None
Nature of the expenses	N/A	N/A
Total amount paid	£ NIL	£ NIL

Note 7 • Investment assets

7.1 Short Term Investments

Carrying (fair) value at beginning of year	268,819
Add: additions/ transfers into investments at cost	-
Add: interest received	3,892
Less: disposals at carrying value	176,613
Add/(deduct): net gain/(loss) on revaluation	-
Carrying (fair) value at end of year	96,098

ANALYSIS OF INVESTMENTS

7.2 Market value at year end

Cash held as part of the investment portfolio	96,098
---	--------

7.3 Income from investments for the year

Cash held as part of the investment portfolio	3,892
---	-------

The investment relates to fixed rate deposits with Cambridge and Counties.

Notes to the accounts

Note 7 • Investment assets (continued)

£

7.4 Long Term Investments

Carrying (fair) value at beginning of year	412,166
Add: additions/ transfers into investments at cost	-
Less: disposals at carrying value	-
Add/(deduct): net gain/(loss)	28,229
Carrying (fair) value at end of year	440,395

ANALYSIS OF INVESTMENTS

7.5 Market value at year end

Investment portfolio - Equities	440,395
--	----------------

7.6 Income from investments for the year

Investment portfolio - Equities	10,372
--	---------------

The investment relates to an investment in the Newton SRI Fund for Charities.

Notes to the accounts

Note 8 • Debtors and prepayments

8.1 Analysis of debtors

	This year (£)	Last year (£)
Amounts falling due within one year		
Grants due	156,216	312,432
Other debtors	-	-
Prepayments and accrued income	1,010	1,010
Total	157,226	313,442

Note 9 • Creditors and accruals

9.1 Other creditors and accruals

	This year (£)	Last year (£)
Amounts falling due within one year		
Other creditors	545,001	224,393
Total	545,001	224,393

9.2 Security over assets

No loan, overdraft or other creditor holds a charge or other security over any assets of the charity.

Notes to the accounts

Note 10 · Endowment and restricted income funds

10.1 Funds held

The following is a brief description of any of the material restricted and endowment funds held by the charity:

- permanent endowment funds (PE);
- expendable designated funds (D); and
- restricted income funds, including special trusts, of the charity (R).

Fund Name	Type PE, D or R	Purpose and Restrictions
Kitty Harrison Memorial Endowment Fund	PE	To enhance the lives of patients with dementia
Kitty Harrison Memorial Income Fund	R	To enhance the lives of patients with dementia
Health Foundation	R	To be used for 'Advancing Applied Analytics' project only
Lindridge	R	For the benefit of Lindridge
Springboard LD (Springwell)	R	Supporting people with complex learning disabilities to have a voice in their care planning
Chalkhill Rockinghorse Fund	R	Funded as agreed by Rockinghorse
Chalkhill	D	To be used for Children & Young People for activities, outings, items over and above what should already be provided by NHS budget
Public Health East Sussex	R	To be used for Albion in the Community/ Movember suicide prevention and mental health awareness - education project
Covid-19 Relief Fund	R	To be used for the Covid-19 Relief Response
NHS Charities Together Stage 2 – Operational Support Costs	R	To be used for operational support costs as part of NHS Charities Together stage 2 community partnership fund
NHS Charities Together Stage 2 – Training	R	To be used for training and related support costs as part of NHS Charities Together stage 2 community partnership fund
NHS Charities Together Stage 2 – Partners Fund	R	To be used for programme delivery of 10 partner organisations as part of NHS Charities Together stage 2 community partnership fund
Covid-19 BAME disparities programme	R	Held for any Charitable purpose that meets the criteria designated
Second wave Covid-19 funding	R	To be used for the 2nd Wave Covid-19 Relief Response
The Estate of Michael Joseph Czerwik	R	To be used to support nurse-led own account research studies
MH Collaborative Grants Programme	R	MH collaborative grants to VCSE
Sussex Staff in Mind Bursary scheme	R	To provide grants to individuals employed in the health and social care sector of an organisation within Sussex ICS

Notes to the accounts

Note 10 • Endowment and restricted income funds (continued)

Other restricted funds & New funds	Type PE, D or R	Purpose and Restrictions
Connolly House Legacy Fund	R	To be used for rehabilitation of patients in Chichester
NHS Charities Together funded projects	R	Held for any Charitable purpose that meets the criteria designated
Electronic Temperature Instruments	R	To be held for care packages for carers
BAME grassroots engagement	R	Held for any Charitable purpose that meets the criteria designated to BAME grassroots engagement
NHS Charities Together Stage 3 Award	R	Held for any Charitable purpose that meets the criteria designated to NHS Charities Together Stage 3 Award
GoodSpace DCMS volunteering project	R	Project manager, buddy volunteer model. DCMS Volunteer project
Grants and Programme Manager	R	Project management costs NHSCT Stage 2, MH Collab Grants programme, Staff in Mind hardship grants
NHSCT Development Grant	R	Organisational Development grant - strategy development, website improvement
Langley Green - Life Music	R	ProjectTo be used for Life Music sessions at LG
Forget Me Not Garden	R	For use in the Forget Me Not Garden
Patricia Dervish Legacy	R	Restricted to Millview Hospital
Music Workshops - CLOSED	R	To be used for music workshops
Make for Tomorrow	R	Trustwide fund

Notes to the accounts

Note 10 • Endowment and restricted income funds (continued)

Other restricted funds & New funds (continued)	Type PE, D or R	Purpose and Restrictions
General Reserve	General	Held for any Charitable purpose that meets the criteria designated by the Charitable Funds Committee and available for access by all areas of the Trust
Schools MH Projects	D	To support CAMHS teams across Sussex and Hampshire
Film Project CAMHS - CLOSED	R	To be used for CAMHS Film project
HB Vogan Legacy Fund	R	To be split equally between Acre Day Hospital, Chichester Centre, and Oaklands Unit as per the terms of the will
Active Sussex	R	Yoga and equipment at Springtides
Screwfix Foundation	R	Hailsham EIP Allotment Project
Natural England	R	Natural recovery research
Oral History NHSCT/HLF	R	Oral History Project
Chaplaincy Service	R	To be used for the are five NHS trusts with chaplaincy services in Sussex
Amber Activities - Langley Green	R	For Amber Ward Langley Green only for a mini gym on their ward
CAMHS LD Woodlands Project	R	To be used by CAMHS LD B&H for Woodlands Projects

Notes to the accounts

Note 10 • Endowment and restricted income funds (continued)

10.2 Movements of major funds

	Type PE, D or R	Fund balances brought forward (£)	Incoming resources (£)	Outgoing resources (£)	Transfers (£)	Fund balances carried forward (£)
Fund names						
Kitty Harrison Memorial Fund	PE	458,418	-	-	(46,252)	440,395
Total Endowment Funds		458,418	-	-	(46,252)	440,395
Health Foundation	R	27,156	-	(11,227)	-	15,929
Lindridge	R	18,880	-	(18,490)	-	390
Springboard LD (Springwell)	R	26,997	-	-	-	26,997
Chalkhill Rockinghorse Fund	R	24,624	30,970	(17,727)	-	37,867
Public Health East Sussex	R	-	-	-	-	-
Covid-19 Relief Fund	R	15,884	-	(100)	-	15,784
NHS Charities Together Stage 2 – Operational Support Costs	R	71,303	-	-	(2,000)	69,303
NHS Charities Together Stage 2 – Training	R	47,245	288	(47,153)	2,000	2,380
NHS Charities Together Stage 2 – Partners Fund	R	-	-	-	-	-
Covid-19 BAME disparities programme	R	9,920	-	(165)	-	9,755
Second wave Covid-19 funding	R	14,071	-	(5,070)	-	9,001
The Estate of Michael Joseph Czerwik	R	41,651	-	(209)	-	41,442
MH Collaborative Grants Programme	R	544,583	-	(290,971)	-	253,612
Sussex Staff in Mind Bursary scheme	R	-	-	-	-	-

Notes to the accounts

Note 10 • Endowment and restricted income funds (continued)

10.2 Movements of major funds

(continued)

	Type PE, D or R	Fund balances brought forward (£)	Incoming resources (£)	Outgoing resources (£)	Transfers (£)	Fund balances carried forward (£)
Other restricted funds, New funds & Closed Funds						
Connolly House Legacy Fund	R	518	-	-	-	518
NHS Charities Together funded projects	R	5,034	-	-	-	5,034
Electronic Temperature Instruments	R	429	-	-	-	429
BAME grassroots engagement	R	2,800	-	-	-	2,800
NHS Charities Together Stage 3 Award	R	13,958	-	(15,918)	-	(1,960)
GoodSpace DCMS volunteering project	R	30,800	2,317	(24,807)	-	8,310
Grants and Programme Manager	R	132,455	-	(40,004)	-	92,451
NHSCT Development Grant	R	30,000	-	(447)	-	29,553
Langley Green - Life Music	R	548	-	-	-	548
FORGET ME NOT GARDEN (Previously Burrowes)	R	5,000	-	-	-	5,000
Patricia Dervish Legacy	R	25,500	2,133	-	-	27,633
Make for Tomorrow	R	4,209	132	-	-	4,341
HB Vogan Legacy Fund	R	-	16,000	-	-	16,000
Active Sussex	R	-	709	(1,342)	-	(633)
Screwfix Foundation	R	-	1,660	-	-	1,660
Natural England	R	-	-	(6,600)	-	(6,600)
Oral History NHSCT/HLF	R	-	40,437	-	-	40,437
Chaplaincy Service	R	-	3,000	-	-	3,000
Amber Activities - Langley Green	R	-	1,577	-	-	1,577
CAMHS LD Woodlands Project	R	-	1,805	-	-	1,805
Kitty Harrison Memorial Fund	R	-	10,372	(5,057)	46,252	51,566
NHS Trust Donation	R	-	249,718	(249,718)	-	-

Notes to the accounts

Note 10 • Endowment and restricted income funds (continued)

10.2 Movements of major funds

(continued)

	Type PE, D or R	Fund balances brought forward (£)	Incoming resources (£)	Outgoing resources (£)	Transfers (£)	Fund balances carried forward (£)
Total Restricted Funds		1,093,565	361,118	(735,004)	46,252	765,931
Unrestricted - General Funds	General	122,917	87,226	(4,312)	-	205,831
Designated Funds						
Chalkhill	D	29,703	250	-	-	29,953
Schools MH Projects	D	10,438	262	-	-	10,700
Total Other Designated Funds	D	144,437	19,737	(23,032)	-	141,142
Total Designated Funds		184,578	20,249	(23,032)	-	181,795
Total Funds		1,859,478	468,593	(762,348)	-	1,593,952

10.3 Charity Ownership

Sussex Partnership NHS Foundation Trust is the Corporate Trustee of the Charitable Funds governed by the law applicable to Trusts, namely the Trustee Act 2000 and the Charities Act 1993. The Corporate Trustee of the Charity acts through the decisions and actions of the executive and non-executive members of Sussex Partnership NHS Foundation Trust Board. Where statute permits, the Board delegates authority for the review of strategy, activity and compliance to a subcommittee of the Board called the Charitable Funds Committee.

Notes to the accounts

Note 11 • Transactions with related parties

11.1 Remuneration and Benefits

There has been no remuneration or other benefits paid to a trustee or other related parties by the charity or any institution or company connected with it during 2023/24 (£Nil 2022/23).

11.2 Loans

There are no loans owing to or from the charity's trustees or other related parties by the charity at the year end (£Nil 2022/23).

11.3 Related parties

Sussex Partnership NHS Foundation Trust is a sole trustee of the charity. All items of income and expenditure go through Sussex Partnership NHS Foundation Trust's accounts on the charity's behalf. At the year end £486,915 (2022/23 £92,475) was owed to the Trustee, and £Nil (2022/23 £Nil) owed by them. During the year, none of the members of the NHS Foundation Trust Board or senior NHS Foundation Trust staff or parties related to them were beneficiaries of the charity.

There are no other transactions with related parties.

Notes to the accounts

Note 12 - Grants (Patient Welfare & Amenities) paid of £3,500 or over

	£
MH Collaborative Grants Programme	290,971
NHS Charities Together Stage 2 – Training	47,153
Grants and Programme Manager	40,004
GoodSpace DCMS volunteering project	24,807
Lindridge Centre	18,490
Chalkhill Rockinghorse Fund	17,727
NHS Charities Together Stage 3 Award	15,918
Health Foundation	11,227
Hampshire Therapy Fund	7,146
Natural England	6,600
Second wave Covid-19 funding	5,070
Kitty Harrison Memorial Income Fund	5,057
General - SPFT Charity	4,312
Small grants across SPFT hospitals and services	18,148
Total	512,630

Notes to the accounts

for the year ended 31 March 2024

Note 13 · Statement of financial activities comparative detail

	Note	Unrestricted funds (£)	Restricted funds (£)	Designated funds (£)	Endowment funds (£)	Total last year (£)
Income and endowments from:						
Donations and legacies	3	14,306	373,052	37,590	-	424,948
Investments	3	25,907	-	-	9,584	35,491
Total		40,213	373,052	37,590	9,584	460,439
Expenditure on:						
Raising funds	4	-	104,520	-	-	104,520
Charitable activities	4	5,003	391,654	24,031	500	421,188
Total		5,003	496,174	24,031	500	525,708
Net income/ (expenditure)		35,210	(123,122)	13,559	9,084	(65,269)
Transfers between funds		4,833	1,036	(5,869)	-	-
Net movement in funds		40,043	(122,086)	7,690	9,084	(65,269)
Other recognised gains/(losses):						
Net gains and (losses) on investment assets	7	-	-	-	(14,373)	(14,373)
Net movement in funds		40,043	(122,086)	7,690	(5,289)	(79,642)
Reconciliation of funds:						
Total funds brought forward		82,874	1,215,651	176,888	463,707	1,939,120
Total funds carried forward		122,917	1,093,565	184,578	458,418	1,859,478

Notes to the accounts

at 31 March 2024

Note 14 • Balance sheet comparative detail

	Note	Unrestricted funds (£)	Restricted funds (£)	Designated funds (£)	Endowment funds (£)	Total last year (£)
Fixed Assets						
Investments		-	-	-	412,165	412,165
Total fixed assets		-	-	-	412,165	412,165
Current assets						
Debtors	8	-	313,442	-	-	313,442
Investments	7	-	268,819	-	-	268,819
Cash at bank and in hand		122,917	735,697	184,578	46,253	1,089,445
Total current assets		122,917	1,317,958	184,578	46,253	1,671,706
Creditors: amounts falling due within one year	9	-	224,393	-	-	224,393
Net current assets/(liabilities)		122,917	1,093,565	184,578	46,253	1,447,313
Total assets less current liabilities		122,917	1,093,565	184,578	458,418	1,859,478
Total net assets		122,917	1,093,565	184,578	458,418	1,859,478
Funds of the Charity						
Unrestricted funds	10	122,917	-	-	-	122,917
Restricted income funds	10	-	1,093,565	-	-	1,093,565
Endowment funds	10	-	-	-	458,418	458,418
Designated funds	10	-	-	184,578	-	184,578
Total charity funds		122,917	1,093,565	184,578	458,418	1,859,478

Legal & Administrative Information

Heads On is an NHS charity in the corporate trustee model, established for charitable purposes in relation to the NHS and particularly for the benefit of patients of Sussex Partnership NHS Foundation Trust.

Trustee

The Charity has a Corporate Trustee – Appointments to the Corporate Trustee are made in accordance with Financial Standing Orders and prevailing guidance and/or legislation from the Department of Health or Appointments Commission.

Charity's Principle Address

Portland House
Richmond Road
Worthing
West Sussex
BN11 1HS

Charity's Independent Examiners

Kreston Reeves
37 St Margaret's Street
Canterbury
Kent
CT1 2TU

Sussex Partnership NHS Foundation Trust Corporate Trustee Membership for 2023/24

Peter Molyneux

Trust Chair (to April 2024)

Sean Duggan, OBE

Trust Chair (from April 2024)

Peter Aitken

Chief Medical Officer (from May 2023 to Oct 2024)

Teresa Barker

Chief Nursing Officer

Simon Blake

Non-Executive Director (from August 2023)

Dinesh Bhugra

Non-Executive Director

Dan Charlton

Chief Communications Officer

John Child

Chief Operating Officer

Kevin Crowley

Non-Executive Director

Oliver Dale

Chief Medical Officer (from Oct 2024)

Rachel Goldsworthy

Chief of Staff (from August 2023 to September 2024)

Jo Larbie

Non-Executive Director & Vice Chair (to March 2024)

Nitin Mehta

Non-Executive Director

Usman Niazi

Chief Finance Officer & Deputy CEO

Funmi Onamusi

Chief People Officer

Jane Padmore

Chief Executive Officer

Gurprit Pannu

Chief Digital & Information Officer (from August 2023 to January 2024)

Anil Patil

Non-Executive Director (from July 2024)

Anna van der Gaag

Senior Independent Director

Cathy Winfield

Non-Executive Director (from Oct 2024)

Claire Woolcock

Interim Chief Medical Officer (to May 2023)

Charity Staff Team

Rachael Duke

Charity Director

Jennie Rule

Head of Fundraising & Deputy Charity Lead

Rachel Blair

Grants & Programmes Manager

Abi Harley

Charity Officer – on maternity leave

Beth Reske

Charity Officer – maternity cover

Nicola Bengel

Living Histories Project Manager



Contact us

Sussex Partnership NHS Foundation Trust

e: spft.headsoncharity@nhs.net

w: headsoncharity.org