

Annual Report 2024/2025



Contents

- 3. A Message From Our Chair
- 4. A Message From Our Charity Manager
- 5. About Us
- 6. Key Moments
- 7. Sensory Gear Giving Healthcare A Boost
- 8. Grand Ball
- 9. The Highlights Reel
- 10. Fuelled by Kindness
- 11. We Funded That!
- 12. Staying Charged, Staying Connected - On Us!
- 13. Fabulous Fundraisers
- 16. Thank You!
- 17. Looking Forward Together
- 18. A Closer Look



A message from Rhys Davies

Chair of the Charitable Funds Committee



Hello and welcome to my last annual report as Chair of Airedale Hospital & Community Charity.

My office as a Non-Executive Director at Airedale NHS Foundation Trust and Chair of our Charitable Funds Committee comes to an end in the Summer of 2025 and so I will be handing over the position to someone new. As always, I have been delighted to look back at the successes of the past year but knowing this will be the last message I write felt extra special.

One of my proudest moments from the last year was to see the community spirit in action at Ilkley Lawn Tennis & Squash Club during their 2024 ILTSC Lexus Tournament. The club generously invited Airedale Hospital & Community Charity to be their chosen local charity at the event. The event sees 20,000 people in attendance across 8 days with non-stop tennis and a wonderful atmosphere. Our team attended the whole event, which saw lots of rain and even more sunshine, selling raffle tickets and chatting to attendees about the work of our Charity and the wider Trust. I was thrilled to be asked to attend the cheque presentation after the event highlighting the incredible £2,632 raised. Thank you to everyone involved in making this a success. I know this partnership will go from strength to strength.

Over the coming year you can expect to see a hive of activity and I will certainly watch with interest, like you, to see what remarkable things are accomplished for our community. The return of our wonderful ball in October will be a highlight, this time taking an evening to celebrate 30 years of our Charity. And how can I not mention the return of our famous CPR-a-Thon which will be returning later in 2025. All these events would not happen without the support of our sponsors to whom I would like to convey my sincerest thanks. Their unfailing support is the backbone of our organisation and without them we would not be able to deliver such incredible experiences.

The coming years will see huge changes for Airedale NHS Foundation Trust with the once-in-a-lifetime rebuild of Airedale General Hospital. I know our Charity team are ready to support this challenge over the coming years, ensuring that our new home will be the best it can possibly be.

Projects to support our colleague's wellbeing will be a priority for the coming year along with investment in new state of the art equipment that will keep Airedale on the map.

I hope that you can take a few moments to read some of the experiences and comments within this report. The faces of our supporters in the pictures really demonstrate what is important and makes Airedale so special – the people.

It has been a privilege to be part of such an incredible organisation and I will be forever thankful that I was a part of the story.



A message from Jodie Hearnshaw

Charity Manager



Another year has passed us by in a flash and in our true style we have been up to all sorts. It has been cathartic to step back and look at all that we have achieved since our last annual report.

This report focuses on the year April 2024 – March 2025. What you will see within its pages, as always, is the incredible zeal, determination and strength of our communities. We never take it for granted that people choose to raise funds, express their thanks and support our Charity so that we can continue to care for Airedale NHS Foundation Trust.

Take for example, Michael who works as a Sterile Services Assistant at Airedale Hospital. Michael's mum Janet was a patient at Airedale, regularly visiting and receiving treatment for breast cancer. The family were keen to thank staff for the incredible treatment and experience Janet had received so they put their fundraising hats on and got to work. Janet herself has held bake sales, encouraged friends and family to purchase items from our Amazon wish lists and Michael even braved the shave, shaving his hair to raise over £2000. This is a wonderful example of how our communities support us every day, even in the darkest times, and we are so grateful.

It's important to take a moment to celebrate the ways we have been able to use your donations this year. You will see lots of examples of how your funds have helped across the entire organisation scattered throughout this report.

During the year we had hundreds of applications requesting the help and support of our charity to fund equipment, events, projects and much more. We were delighted to support the purchase of two Medela Symphony Breast Pumps for our Neo-natal Unit at a cost of over £5,000.00. Providing these hospital grade pumps means that Mum's don't have to wait to be able to express for their poorly or pre-term baby and they can have a more comfortable experience.

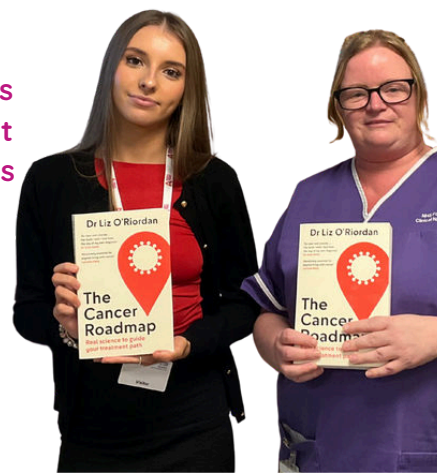
One mum said, 'The relief these pumps brought, literal life saver! And providing those babies with all the goodness'. Another comments, 'This is brilliant. They are so useful when caring for your baby on the Neo-natal Unit'. I am sure you will agree, this is an amazing outcome for our new parents and their babies.

It's not always highly priced items that bring the biggest benefits for our patients and staff. One way we supported our cancer patients this year was to provide copies of Dr Liz O'Riordan's book 'The Cancer Roadmap'. The books are available for patients to borrow or read while they are visiting.

And how can we forget the success of the sensory trolley's we have funded over the last few years? So incredible has been the response, we have dedicated even more funding to purchase extra trolleys for our Emergency Department and Acute Assessment Unit in the coming year.

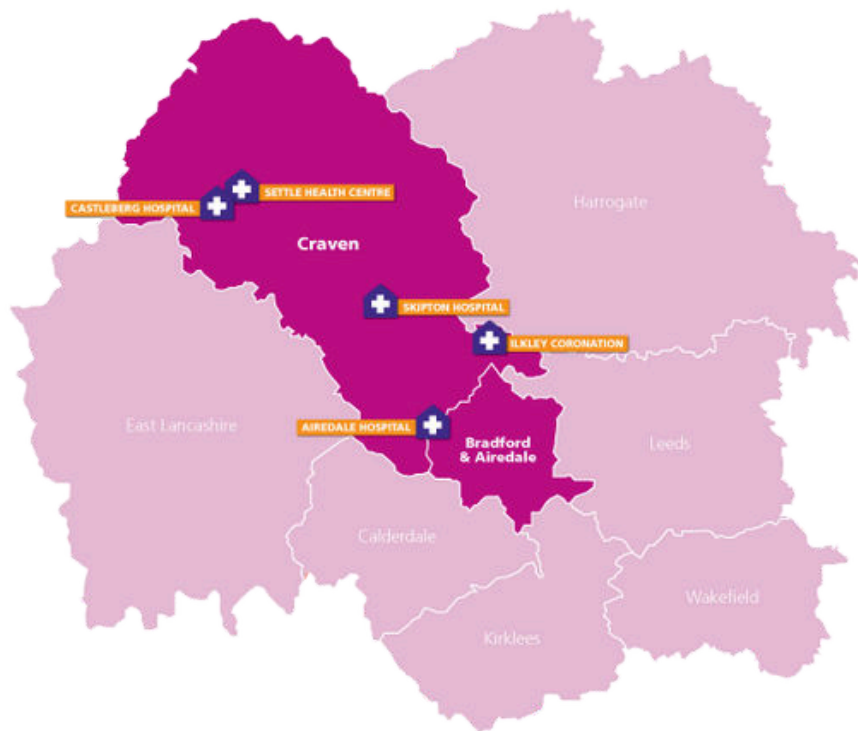
I hope that I have been able to give you just a small taste of what you will find throughout the report. It is impossible for us to mention every single person that has created the story of our year, there are just too many of you. If you would like to keep up to date with the stories and news from Airedale Hospital & Community Charity you can always follow our progress on social media or the blog on our website, www.airedalecharity.org.

All that's left for me to say is thank you. For showing your love for Airedale and allowing us to continue to represent you when you entrust us with your support and kindness.



About us

We are the dedicated charity of Airedale NHS Foundation Trust (ANHSFT). Every day we work to support the staff, patients and communities of Airedale across 700 square miles.



Our vision

Our vision is to enhance the wellbeing and experience of people using the services that Airedale NHS Foundation Trust provides and of our colleagues, across all our sites and community settings

Our mission

Our mission is to help Airedale NHS Foundation Trust by raising funds, supporting others and championing the Airedale community

Our team



Jodie Hearnshaw

Charity Manager

jodie.hearnshaw@nhs.net



Carla Weatherall

Fundraiser

carla.weatherall@nhs.net



Laura Hepworth

Community Fundraiser

laura.hepworth@nhs.net



Laura Turner

Communications & Charity Assistant

laura.turner62@nhs.net



Kirsty Marshall

Charity Accountant

k.marshall23@nhs.net

Key moments



July 2024

ConFest choose to support our Emergency Department Appeal at their 2024 festival and what a day we had! With live music and lots of great company over £2,000 was raised.

October 2024

Our menu of poems popped up on patient meal trays across our hospitals and made their way to the restaurant and café areas too. The collection of poems written by members of our community celebrated Acts of Kindness and brought a smile to lots of people on International Poetry Day.



December 2024

The festive season did not disappoint with over 1000 Christmas gifts donated for our patients. There were 52 entries for our Christmas card competition and we were serenaded by 10 school choirs too.

March 2025

Our annual world book day extravaganza took to the road again stopping at Cowling Community Primary School, Haworth Primary School, St Joseph's Catholic Primary School, Wharfedale Montessori School, Skipton Parish Primary School and finishing at Airedale's Nightingales Day Nursery. We gave out nearly 70 books to celebrate our favourite day of the year.

April 2024



June 2024

We were proud to be chosen as the local charity partner of the 2024 Ilkley Lawn Tennis & Squash Club Lexus Tournament. Together we chatted to thousands of people and raised nearly £3,000 for our Emergency Department Appeal.

September 2024

The sun shone on our teams that took part in our very first golf day at Branshaw Golf Club in beautiful Bronte country. Raising £3738.00 the event hit a hole in one and made it into our hall of fame.



November 2024

Our Grand Ball raised £10,206.00. Read more about it on page 8.



February 2024

We always love to see people showing their love for Airedale during the month of love. Visitors to Airedale Hospital had the opportunity to do just that at our Valentine's Market held onsite. Vendors donated a percentage of their proceeds and raised.

Sensory Gear Giving Healthcare a Boost



Funding was provided to our Emergency Department to purchase a movable relaxation sensory trolley for use with patients.

The trolley is like others funded by the Airedale Hospital & Community Charity that are used across the organisation. Kitted out with a bubble tube, fibre optic strands and a projector, the trolley makes it easy to turn even a small space into a multi-sensory environment.

The trolley has had a huge impact on patient experience within the Emergency Department. One mother shared her family's experience -

"Unfortunately, last year my 33-year-old son whose diagnosis is autism with special needs visited the Emergency Department after fainting, falling from his chair and causing some damage to his face. He was bleeding, shaken up and generally very distressed.

Due to his learning difficulties, he was unable to understand what was going on. His ear required cleaning before gluing. Being very distressed and in pain, along with generally not being well, his compliance and engagement was almost non-existent.

The nurse on duty brought the sensory trolley out bringing a much-needed distraction from the busy corridor and allowing him to de-escalate and become calmer. It's such a breath of fresh air from my point of view to see people recognising that adults with special needs can also benefit from sensory items and it's not just for children. I'd like to say a massive thanks to all concerned, such a valuable, yet simple item that helped my son during a traumatic incident."

Sophie and Zoe, Staff Nurses in the Emergency Department shared their thoughts -

"Personally, for us, as nurses who often work in Resuscitation the trolley provides invaluable distraction for all types of patient groups.

The trolleys have allowed us to alleviate that real fear of hospitals in children, adults/teenagers with Learning Disabilities, patients in a mental health crisis and adults living with dementia.

This patient really touched us with the positive response that he had, especially with the trolley being so new at the time. I really hope that the experiences that he had within the department using the trolley "made up" for some of the negative hospital experiences he'd had previously.

Ultimately, the trolleys allow us to do our jobs effectively and efficiently whilst reducing stress levels from patients, carers and staff. They're a great distraction whilst we're doing investigations or giving treatment; taking bloods, inserting cannulas, using nebulisers, taking X-Rays and in resus. The list could go on.

They're also just helpful to calm the whole situation. If we're caring for a distressed child/adult we're unlikely to get true and accurate readings for their observations. Being able to calm the patient first has probably avoided unnecessary hospital admissions and/or prolonged Emergency Department stays. I'm also certain that they will have impacted on the number of failed cannulas and bloods we've done in children.

They're probably one of the most used bits of equipment that we have in the department."

Grand Ball

Our Grand Ball was held on 8 November 2025 at East Riddlesden Hall, Keighley to raise funds for Airedale General Hospital's Neonatal Unit.

The idea for the ball came after a need was seen by nursing staff on the unit. Parents will often have a transition stay towards the end of their time on the unit where both child and parent will stay overnight in the 'family bedroom'. This transition aims to provide a sense of normality and home life especially after a longer stay on the Unit.

"We saw a real need with the family facilities on the unit. At the moment, it still feels like a hospital room rather than providing a sense of home to the families before they fully transition off the unit and go home. For a lot of our families it may be their first time ever experiencing being on this kind of unit or even in hospital for an extended period. We want to ensure that their journey towards home is as comfortable as possible and thanks to the incredible amount raised, we're closer than ever to this being a reality." - **Sarah Szpara, Neonatal Unit Manager**

The Grand Ball saw support from local businesses including Robertson Construction Yorkshire & East Midlands, Hive Projects, Shelby, Pro Fire Systems, Gallaghers Funeral Directors, Fizz and Fire, Bob Smith photography, four-piece band Whiskey Wood and The VW Wedding Co.

"I'd like to express my sincere thanks to our sponsors, suppliers and attendees for making this incredible event happen. Because of you, we've been able to raise such a fantastic amount for the Neonatal Unit. We're really pleased that the team will be able to start thinking about bringing a sense of home to the family room. It's such a vital part of their journey on the unit where they can prepare for home life." - **Jodie Hearnshaw, Charity Manager**

The Grand Ball raised an incredible £10,206.00 and we would like to extend huge thanks to everyone that was involved in making the event a success.



For information on the 2025 event please visit www.airedalecharity.org

The Highlights Reel: The Things We Did, All in One Place



£273,000
raised

104
Grants
approved



HUNDREDS
of handmade knitted
items

75 random acts
of kindness



150 press
releases



56,000
Social media
engagements

50 small businesses
supported



100 World Book Day
nominations



52 Christmas card
competition entries

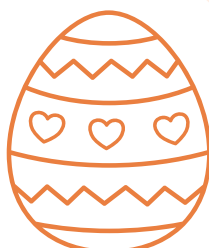


24 runners

9,000
free samples
distributed



Over 1,000
Christmas
gifts



1216
Easter Eggs

Fuelled by Kindness: A Peek into Our Colleague Wellbeing World



Ramadan Ally Project

We were committed to supporting colleagues during the holy month of Ramadan. Working closely with the Trust's Chaplaincy team gave us an incredible understanding of how we could best support our colleagues which led to the development of the Ramadan Ally scheme.

As well as getting out and about with the Chaplaincy team armed with the 'Proud to be a Ramadan Ally' photo prop to promote inclusion we were delighted to be able provide dates and bottled water for colleagues to break their fast whilst on shift.



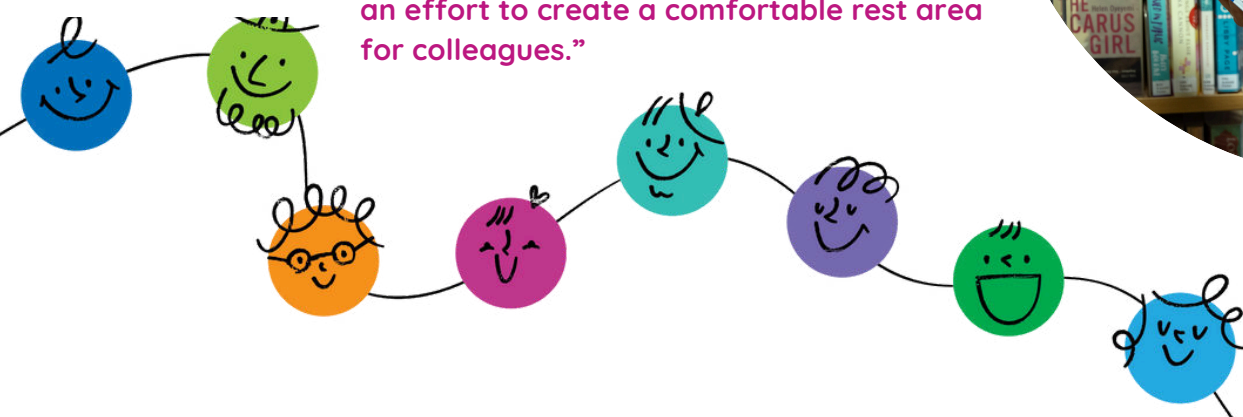
Wellbeing Grants

Our AOK Wellbeing Grants were back with a bang in 2024. Each year we encourage colleagues from across Airedale to apply for funding to purchase items that would support staff wellbeing.

Over 63 applications were submitted to our Kindness Krew panel for consideration. The panel look at the impact supporting the application will have on our colleagues. Over £11,000 in grant funding was approved across the organisation in 2024.

Dr James Chan, Consultant in Emergency Medicine submitted an application for a sleeper chair for him and his colleagues to catch 40 winks when they are working a nightshift. Here's what James thinks of our grants and the difference they have made to his team –

“The chair bed has been really well received and has inspired our team to make more of an effort to create a comfortable rest area for colleagues.”



We Funded That! Some of the Projects We're Proud Of...

Dementia Equipment

The team on ward 4 raised funds through a bake sale to help fund the purchase of some dementia equipment for their patients.

The extra resources are helpful to –

- Improve communication;
- Offer fun activities and exercises;
- Provide distraction therapy.

Colleagues have launched a project 'Keep active, stay strong' where patients are invited to engage in activities involving music and games with other patients before lunch time. This project is helping to prevent deconditioning, manage dementia care and improve appetite too.



Twin Cot

Funding was given to purchase a new twin cot for the neo-natal at Airedale Hospital. The new cot allows twins to sleep safely side-by-side.

Keeping twins close can help strengthen their bond, support their development and offer comfort to the babies and their loved ones. Having a twin cot gives the team flexibility to care for their smallest patients in a way that is safe, practical and centred around the babies themselves.



Chloe Taylor, Neonatal Sister –

'It has been amazing to use, the staff and families love it, and the families have really appreciated how nice it has been for the babies to remain together in the cot. It is nice for them not to be separated after they have been in touching distance of each other for up to 9 months!'

Staying Charged, Staying Connected - On Us!



In 2021 we purchased two ChargeBox stations with the help of grant funding.

Located in our Emergency Department and Main Reception area they have since delivered 740,000 minutes of **free** charging to our patients, visitors and staff devices.

740,000
minutes
charged



Up above the ward so high

Being in hospital can be a scary time for anyone but especially our young patients.

With the help of a grant from the B & Q Foundation we invested in ceiling tiles that provide distraction and focal points in our assessment and waiting rooms. The tiles certainly brighten the space and offer a fun way to pass the time.

Showing our communities the way

We were proud to help our Critical Care colleagues develop their 'Critical Care Journey' project. One of the items we funded was an information board that details the journey Critical Care patients take during their stay and what their families can expect.

The board is proudly displayed in a large form on one of the walls in the unit so it can always be referred to easily.

Helpful information on the board includes explanations of the equipment you might see and what they are for, support for friends and family, how the team get to know their patient and how they will communicate.

Other developments in the project include the 'get to know me' boards that each patient has on their bedside and patient diaries that medical staff complete to help fill in the gaps.



Fabulous Fundraisers



Oliver

Oliver, a dad from Silsden raised an incredible £2735 for the Neo-natal Unit by running the Yorkshire Marathon in October. Oliver's son, Oliver Junior stayed on the unit when he was three weeks old in 2023. Oliver wore a 9kg weighted vest during the marathon to represent the average weight of a 1-year-old male.

“As a parent, it's a scary feeling coming onto a ward with alarms going off as in the beginning you have no clue what they mean. There's a lot of worry and panic in that initial period but we feel so lucky to have had the support of the staff on the unit, they were so great at keeping us as calm as possible and took the time to explain what was happening. Oliver Jr was on Airedale's Neonatal Unit for 7 and a half weeks, we came home on 30 November 2023, 10 days before his due date. Getting ready to bring Oliver Jr home brought on a lot of mixed emotions, it felt so daunting after he had been in hospital for so long.”

Team HOJO, better known as Holly and Jodie completed the National Three Peaks challenge to raise funds for our Haematology and Oncology Day Unit (HODU) fund. The National Three Peaks is a timed challenge with participants taking on Ben Nevis in Scotland, Scafell Pike in England and Snowdon in Wales in under 24 hours.

Holly and Jodie not only completed the 23 mile challenge with an outstanding time of 23 hours and 21 minutes, but they raised a phenomenal £3,400 in the process.

“We chose HODU as our charity for our National 3 Peak challenge as a close friend of ours has recently begun treatment on the unit. As we started fundraising and sharing information about the charity and the challenge we were taking on, we quickly realised how much it resonated with others—many people we knew had also received care there.

This made the cause even more personal and inspired us not only to complete the challenge, but also to raise a significant amount of money to show our appreciation for the exceptional care and support the ward has provided to so many. We'd like to express a special thanks to Timothy Taylors Brewery and Cross Roads Fisheries for their support in our fundraising, we couldn't have raised such an amazing amount without them!”



Oliver & Oliver Junior with the Neo-natal Team



Holly & Jodie

We had a tee-rific time at our golf day!



£3,738
raised

We held our first Charity Golf Day at Branshaw Golf Club in Oakworth. Sponsored by Davric Construction Services and Service Electrical (Bradford) a fantastic £3,738 was raised at the event.

“I’m really pleased with how the charity’s first fundraising golf day went. It makes me very proud to have sponsored the event alongside Service Electrical. We couldn’t have asked for a better turnout. Thank you to everyone who attended, together we raised a brilliant amount of money for a local cause that we all have come into contact with at some point in our lives.” - David Hamer, Director of Davric Construction Projects

Congratulations to the winning team, ‘Team Oldfields’ from Oldfield Electrical, we look forward to watching them try hold onto that trophy in 2025!

Keighley JOIN project

Attendees of the Keighley based JOIN project took on a sponsored walk, hosted a raffle and baked delicious treats in a bid to raise funds for the Acute Assessment Unit (AAU).

The JOIN project is an independent charity with an aim of empowering adults with learning disabilities to feel valued whilst taking part in activities within their local community. The sponsored walk began at the canal on Barr Lane through to Five rise locks in Bingley.



“We love to take on challenges for good causes so when this came to our attention, we started thinking about the different fundraising activities we could do. It was very easy to incorporate the fundraising into the various activities we do across the week, like our cookery groups on a Monday, Wellbeing Wednesdays and out and about Fridays.” - Lindsie Edgar, Support Worker.



Thank you!
To those we have
mentioned and so many
others... THANK YOU for
showing your love for
Airedale.



Looking forward together

Some of the key areas of focus for our Charity next year:



Celebrating 30 years of showing our love for Airedale

As we enter the thirtieth year of Airedale Hospital & Community Charity we do so with a commitment to continue to carry out the amazing work that has gone before us.

Celebrations of the milestone will take place through events, community engagement and support of our colleagues.

We will showcase the successes and achievements of the last 30 years and look forward to our future with pride.



Working with you

We make a good team, and we will continue to celebrate our work together. Our Charity will make sure that our local communities have a key role in our success and our future.

We will listen to your views, champion your businesses and put you at the heart of everything that we do.



Investing in Airedale

A key strategic area for us is to continue and increase our investment across the length and breadth of Airedale NHS Foundation Trust.

We will continue to be efficient, responsive, financially sound, sustainable and well-governed, ensuring that we use our donors' funds wisely and according to their wishes.

We will actively seek out opportunities to show our support with a comprehensive plan of spend inline with our strategic and charitable objectives.



Airedale AOK

You will always see us championing our Airedale Acts of Kindness principles. Through listening, showing an interest, being patient and encouraging, offering support and offering simple acts of kindness we will continue to make a space in our organisation for kindness.



Anchor in the community

We respect our position alongside Airedale NHS Foundation Trust as an anchor in our local communities across West & North Yorkshire and East Lancashire and now more than ever before we will do our best to celebrate the wonderful community we serve.

We will continue to fly the Airedale flag proudly for all to see.



A closer look

Airedale Hospital & Community Charity has a Corporate Trustee, which is the Airedale NHS Foundation Trust Board of Directors. The Corporate Trustee presents the Airedale Hospital & Community Charity Annual Report together with the independently examined financial statements for the year ended 31 March 2025.

The Corporate Trustee is responsible for preparing the Annual Report and the financial statements in accordance with applicable law and UK Accounting Standards (UK Generally Accepted Accounting Practice). The law applicable to charities in England and Wales requires the Trustee to prepare financial statements for each financial year which show a true and fair view of the state of affairs of the Charity and of the incoming resources and application of resources of the Charity for that period.

The Corporate Trustee is responsible for keeping proper accounting records which disclose with reasonable accuracy the financial position of the Charity and enable them to ascertain that the financial statements comply with the Charities Act 2011, the Charity (Accounts and Reports) Regulations 2008 and the provisions of the Trust Deed. They are also responsible for safeguarding the assets of the Charity and hence for taking reasonable steps for the prevention and detection of fraud and other irregularities.

The Report and financial statements include all the separately established funds for which Airedale NHS Foundation Trust is the sole beneficiary.

The members of the Board of Directors who served during the financial year ended 31 March 2025 and therefore acted as the Corporate Trustee were as follows:

Andrew Gold	Chair (from January 2018 - September 2024)
Foluke Ajayi	Chief Executive (from April 2022)
Leanne Cooper	Chief Operating Officer (from February 2023)
Lianne Robinson	Interim Chief Nurse (from April 2024)
Amanda Stanford	Chief Nurse (from January 2021 - April 2024)
Mike Savage	Executive Director of Finance (from October 2023)
Joanne Harrison	Executive Director of People and Organisational Development (from September 2019)
David Crampsey	Medical Director (from June 2020 - November 2024)
Fiona Barr	Director of Corporate Affairs (from December 2022 - March 2025)
Melanie Norbury	Interim Executive Director of Corporate Affairs (from July 2024)
Stuart Shaw	Executive Director of Strategy, Planning & Partnerships (from October 2018)
Nadira Mirza	Non-Executive Director (from May 2019 - November 2024)
Rhys Davies	Non-Executive Director (from June 2019 - May 2025)
Melanie Hudson	Non-Executive Director (from May 2019 - May 2025)
Ian Knight	Non-Executive Director (from November 2021 - July 2025)
Andy Withers	Non-Executive Director (from May 2020) and Interim Chair (from October 2024)
Mark Andrews	Non-Executive Director (from June 2023)

Reference and administrative details for the Charity, Trustee and Advisers

The Charity

Airedale Hospital & Community Charity (the ‘Charity’) is a public benefit entity. The Trustee has regard for the Charity Commission’s guidance on the public benefit requirement as set out in section of the 2011 Charities Act.

This report outlines the activities of the Charity in furthering the Charity’s purposes for the public benefit.

Airedale Hospital & Community Charity are registered with the Charity Commission under the single registered number 1050730.

The Trustee

Airedale NHS Foundation Trust is the Corporate Trustee of the charitable funds governed by the law applicable to Trusts, principally the Trustee Act 2000 and the Charities Act 2011.

The Foundation Trust’s Board of Directors devolved responsibility for the ongoing management of funds to the Charitable Funds Committee (‘the Committee’) which administers the funds on behalf of the Corporate Trustee.

This Committee was formed on 20 December 2007.

The below members of the Board of Directors served on behalf of the Corporate Trustee and attended Committee meetings during the financial year ended 31 March 2025.

The Charity was entered onto the Central Register of Charities on the 15 November 1995 as Airedale NHS Charitable Funds and was formed under the umbrella charity model with several subsidiaries. Following structural changes within the NHS, the subsidiaries were removed in 2008. The Charity changed its name to Airedale NHS Foundation Trust Charitable Funds following Airedale NHS Trust achieving Foundation Trust status on 1 June 2010. There was a further name change in March 2020 when the Charity changed its name to Airedale Hospital & Community Charity to better encompass all aspects of its strategic aims.

New members of the charitable funds committee and Trust Board are provided with an induction pack consisting of valuable information about the Charity. Appropriate training is offered in charity law and administration, and the roles and responsibilities of trustees.

Neil Helm acted as the principal officer overseeing the day-to-day financial management and accounting of the Charity during the year to 31 March 2025. Melanie Norbury, Interim Director of Corporate Affairs & Governance, oversaw the governance elements of the Charity during the year to 31 March 2025.

Rhys Davies	Non-Executive Director (from June 2019 - May 2025)
Andrew Gold	Chair (from January 2018 - September 2024)
Leanne Cooper	Chief Operating Officer (from February 2023)
Fiona Barr	Director of Corporate Affairs (from December 2022 - March 2025)
Melanie Norbury	Interim Executive Director of Corporate Affairs (from July 2024)
David Crampsey	Medical Director (from June 2020 - November 2024)
Joanne Harrison	Executive Director of People and Organisational Development (from September 2019)
Annie McCluskey	Divisional Director of Nursing for Corporate Services
Linda Dobson	Public Governor for Keighley Central/East
Elizabeth Stoppard	Consultant, Elderly Medicine



Principal office

Airedale Hospital & Community Charity
c/o Airedale NHS Foundation Trust
Airedale General Hospital
Skipton Road
Steeton
Keighley
BD20 6TD

Principal professional advisors

Bankers

National Westminster
Bank
Government Banking
Services Branch
Premier Place
2 ½ Devonshire Square
London
EC2M 4BA

Barclays Bank PLC
77 North Street
Keighley
BD21 5BD

Investment Fund Managers

Rathbones Investment
Management
Port of Liverpool
Building
Pier Head
Liverpool
L3 1NW

Independent Examiners

Stirk, Lambert & Co
Russell Chambers
61a North Street
Keighley
BD21 3DS

Structure, Management and Governance

Structure

The Charity has one key NHS wide objective: “The Trustee shall hold the trust upon trust to apply the income, and at their discretion so far as may be permissible, the capital, for any charitable purpose or purposes relating to the National Health Service.”

The Charity also has a number of objectives developed and linked specifically to the needs and objectives of Airedale NHS Foundation Trust:

- To support our people and their wellbeing
- To improve the patient experience
- To progress services and innovation within the Trust
- To support services delivered in partnership
- To support the needs of the population we serve

The Corporate Trustee conducts its activities with regard to the Charity Commission guidance on public benefit in section 4 of the Charities Act 2011.

The key principles of public benefit are:

- there must be identifiable benefit(s); and
- benefit must be to the public or to section of the public.

Accordingly, the Corporate Trustee ensures that funds are used for the benefit of, and enhancement to, the care of patients and well-being of staff. This is achieved through the provision of medical and non-medical equipment that otherwise would not be available for purchase through public NHS funding. The Charitable funds may also be used to fund enhanced patient care by providing additional nurse training and education which otherwise would not be available. The benefits of providing new equipment and enhanced care is available free of charge to all members of the public and patients using Airedale NHS Foundation Trust’s service.

Management

The Charity's unrestricted fund was established using the model Declaration of Trust and all funds held on trust as at the date of registration were either part of this unrestricted fund or registered as separate restricted funds under the main charity. Subsequent donations and gifts received by the Charity that are attributable to the original funds are added to those fund balances within the existing charity.

The Corporate Trustee fulfils its legal duty by ensuring that funds are spent in accordance with the objects of each fund and, by designating funds, the Trustee respects the wishes of our generous donors to benefit patient care and advance the good health and wellbeing of patients, carers and staff.

The Corporate Trustee and the representatives of the Corporate Trustee have regard to the public benefit guidance issued by the Charity Commission when exercising any powers or duties to which the guidance is relevant. Where funds have been received which have specific restrictions set by the donor, these have been managed accordingly.

The charitable funds available for spending are allocated to specialities within the Trust's directorate management structure as well as an unrestricted fund for use 'where it is needed'.

Each allocation is managed by use of a designated fund within the general unrestricted fund. For example, there are charitable funds for medicine which include allocations for each of the wards and within surgery the funds include allocations for Ophthalmology and Theatres.

Under a scheme of delegated authority approved by the Corporate Trustee, named Directors have day to day responsibility for the management of the Charity and must personally approve, on behalf of the Corporate Trustee, all expenditure over £1,000 with an upper limit of £7,500 using their delegated authority. The Committee has delegated authority to approve expenditure over £7,500 with an upper limit of £50,000. Expenditure of £50,000 and above requires approval by the Trust's Board of Directors acting in their capacity as the Corporate Trustee.

Governance

Acting for the Corporate Trustee, the Charitable Funds Committee is responsible for the overall management of the Charity. The committee is required to:

- Control, manage and monitor the use of the Charity's resources;
- Manage and monitor the receipt of all income;
- Ensure that 'best practice' is followed in the conduct of all its affairs, fulfilling all of its legal responsibilities, ensuring the Charity operates and complies with current legislation;
- Ensure that the Investment Policy, approved by the Board as Corporate Trustee, is adhered to and that performance is continually reviewed whilst being aware of ethical considerations; and
- Keep the Trust Board fully informed on the activity, performance, and the risks of the Charity.

The accounting records and the day-to-day administration of the funds are dealt with by the Trust's Finance Department located at Airedale General Hospital, Skipton Road. Steeton, Keighley, BD20 6TD.

Risk Management

The risks to which the Charity is exposed have been identified and are logged on a risk register. The risk register is reviewed on a regular basis and systems established to mitigate those risks.

Independent Financial Scrutiny

Stirk, Lambert & Co. (AHCC's independent examiner commencing 1 September 2022) undertook a statutory independent examination of the financial statements for the charitable funds.

Independent examination is permitted by the Charities Commission for a charity of this size. Independent examination is a 'light touch' scrutiny wherein the examiner is only required to confirm whether any material matters of concern have come to their attention and excludes the audit requirement to provide an opinion on whether a charity's accounts give a 'true and fair view'. They gave an unqualified report on the accounts.

Principal Risks and Uncertainties

The Corporate Trustee has considered the key risks to which the Charity is exposed:

- A fall in income from donations the Trustee has arrangements in place to mitigate those risks. The Corporate Trustee aims to mitigate the risk that income will fall by supporting the fundraising team with increasing the Charity's visibility in the local community and beyond. The Charity has a fundraising strategy that is reviewed on an annual basis. This is supported by a communications and marketing plan to ensure brand visibility and support. Robust internal governance ensures that the Charity is only spending funds that are available.
- A fall in income from investments. The investment portfolio is well diversified to help protect the Charity against any fall in value of a particular market. The Investment Manager (Rathbones) holds a discretionary mandate which enables them to make investment and divestment decisions on the Charity's behalf. Both above help minimise the principal risks and uncertainties and allows the Corporate Trustee to consider the Charity to be a going concern.
- Unforeseen changes in the operation of the NHS. The NHS is, by its very nature, subject to national changes in government policy as well as local politically driven decisions. The Charitable Funds Committee has identified this as a risk as it may mean initiatives or healthcare activities supported by AHCC are no longer delivered in the Airedale area. The Committee regularly liaises with NHS partners to understand the changes that they are facing at an early stage. Airedale Hospital & Community Charity is reliant on donations to allow it to make grants. If income falls, then the Charity would not be able to make as many grants or enter into longer term commitments.

Reserves Policy

The Trustee has a target for reserves to fund up to three years of expenditure. This is to allow freedom to make grants when they are needed in anticipation of investment returns and donations. Reserves at this level will also permit the timely realisation of expendable endowments to make grants, on an exceptional basis, where required. No target figure was set. The level of unrestricted funds, has increased between 31st March 2024 and 31st March 2025, from £1,013k to £1,028k. The reserves policy is reviewed on a three yearly basis alongside the investment policy.

Financial statements

Throughout 2024/25 the Charity continued to support a wide range of health-related activities benefitting both patients and staff. In general, they are used to purchase a variety of additional goods and services that the NHS is unable to provide.

Annual financial statements for the year ended 31 March 2025

Foreword

These financial statements cover the year from 1 April 2024 to 31 March 2025, and have been prepared by the trustee based on a going concern basis.

These accounts have been prepared by the Trustee in accordance with “Accounting and Reporting by Charities: Statement of Recommended Practice” (FRS 102) issued in October 2019, the Charities Act 2011, and the Charities (Accounts and Reports) Regulations 2008.

Main purpose of the funds held on trust

The main purpose of the charitable funds held on trust is to apply income for any charitable purpose relating to the National Health Service wholly or mainly for the services provided by the Airedale NHS Foundation Trust.

Statement of trustees’ responsibilities

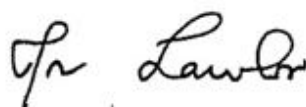
Under charity law, the trustee is responsible for preparing the trustee’s annual report and accounts for each financial year which show a true and fair view of the state of affairs of the charity and of the excess of expenditure over income for that period.

In preparing these financial statements, generally accepted accounting practice requires that the trustee:

- select suitable accounting policies and then apply them consistently
- make judgments and estimates that are reasonable and prudent
- states whether the recommendations of the SORP FRS 102 have been followed, subject to any material departures disclosed and explained in the financial statements
- states whether the financial statements comply with the trust deed, subject to any material departures disclosed and explained in the financial statements
- prepares the financial statements on the going concern basis unless it is inappropriate to presume that the charity will continue its activities.

The trustee is required to act in accordance with the trust deed and the rules of the charity, within the framework of trust law. The trustee is responsible for keeping proper accounting records, sufficient to disclose at any time, with reasonable accuracy, the financial position of the charity at that time, and to enable the trustee to ensure that, where any statements of accounts are prepared by the trustee under section 132(1) of the Charities Act 2011, those statements of accounts comply with the requirements of regulations under that provision. The trustee has general responsibility for taking such steps as are reasonably open to the trustee to safeguard the assets of the charity and to prevent and detect fraud and other irregularities.

Signed on behalf of the trustee:



Name: John Lawler – Chair of Charitable Funds Committee

Date: 8 October 2025

Statement of Financial Activities for the year ended 31 March 2025

Income and endowments from:	Note	Unrestricted Funds	Restricted Funds	Total Funds	
		2024/25	2024/25	2024/25	2023/24
		£000	£000	£000	£000
Donations and legacies	3	139	0	139	154
Other trading activities	4	95	0	95	86
Investments	6	39	0	39	41
Total incoming resources		273	0	273	281
Expenditure on:					
Raising Funds	7	(147)	0	(147)	(127)
Charitable activities					
Grants Payable & Gifts in Kind Distributed	8	(63)	0	(63)	(186)
Support costs	10	(34)	0	(34)	(37)
Total expenditure		(244)	0	(244)	(350)
Net gains/(losses) on investments	14	(14)	0	(14)	42
Net income/(expenditure)		15	0	15	(27)
Transfers between funds		0	0	(0)	0
Net movement in funds		15	0	15	(27)
Reconciliation of Funds					
Total Funds brought forward at 1st April	19	1,013	0	1,013	1,040
Total Funds carried forward at 31st March		1,028	0	1,028	1,013

The notes at pages 27 to 40 form part of these accounts.

All gains and losses recognised in the year are included in the Statement of Financial Position.


All the results on the Statement of Financial Activities are derived from Continuing operations.

Balance Sheet as at 31 March 2025

	Note	Unrestricted Funds	Restricted Funds	Total at 31 March 2025	Total at 31 March 2024
		£000	£000	£000	£000
Fixed Assets					
Investments	14	583	0	583	598
Total Fixed Assets		583	0	583	598
Current Assets					
Debtors	15	5	0	5	1
Cash and Cash Equivalents	16	479	34	513	535
Total Current Assets		484	34	518	536
Liabilities					
Creditors falling due within one year	17	39	0	39	92
Deferred income	17	0	34	34	29
Net Current assets/(liabilities)		445	0	445	415
Total assets less current liabilities		1,028	0	1,028	1,013
Total net assets or liabilities		1,028	0	1,028	1,013
The Funds of the Charity					
Endowment Funds	19	0	0	0	0
Restricted Income Funds		0	0	0	0
Unrestricted Income Funds		1,028	0	1,028	1,013
Total Charity Funds		1,028	0	1,028	1,013

The notes at pages 27 to 40 form part of these accounts, signed on behalf of the trust by John Lawler (Chair of the Charitable Funds Committee).

Signed on behalf of the trustee:



Name: John Lawler - Chair of the Charitable Funds Committee

Date: 8 October 2025

Statement of Cash Flows for the year ended 31 March 2025

	Note	Total Funds at 31 March 2025	Total Funds at 31 March 2024
		£000	£000
Cash flows from operating activities:			
Net Cash provided by (used in) operating activities	18	(62)	(91)
Cash flows from investing activities:			
Dividends, interest and rents from investments	6	39	41
Proceeds from the sale of investments	14	1	1
Purchase of investments	14	0	0
Net cash provided by (used in) investing activities		40	42
Change in cash and cash equivalents in the reporting period		(22)	(49)
Cash and cash equivalents at the beginning of the reporting period	16	535	584
Change in cash and cash equivalents due to exchange rate movements		0	0
Cash and cash equivalents at the end of the reporting period		513	535

Notes on the Accounts

1) Accounting Policies

a) Basis of Preparation

The financial statements have been prepared under the historic cost convention, with the exception of investments which are included at fair value.

The accounts (financial statements) have been prepared in accordance with the Statement of Recommended Practice: Accounting and Reporting by Charities preparing their accounts in accordance with the Financial Reporting Standard applicable in the UK and Republic of Ireland (FRS 102) issued in October 2019 and the Financial Reporting Standard applicable in the United Kingdom and Republic of Ireland (FRS 102) and the Charities Act 2011 and UK Generally Accepted Practice as it applies from 1 January 2019.

The accounts (financial statements) have been prepared to give a 'true and fair' view and have departed from the Charities (Accounts and Reports) Regulations 2008 only to the extent required to provide a 'true and fair view'. This departure has involved following Accounting and Reporting by Charities preparing their accounts in accordance with the Financial Reporting Standard applicable in the UK and Republic of Ireland (FRS 102) issued in October 2019 rather than the Accounting and Reporting by Charities: Statement of Recommended Practice effective from 1 April 2005 which has since been withdrawn.

The trustee considers that there are no material uncertainties about the Airedale Hospital and Community Charity's ability to continue as a going concern. There are no material uncertainties affecting the current year's accounts.

In future years, the key risks to the charity are a fall in income from donations or investments but the trustee has arrangements in place to mitigate those risks (see the 'Principal Risks and Uncertainties' section of the annual report for more information).

b) Funds Structure

Where there is a legal restriction on the purpose to which a fund may be put, the fund is classified either as:

- a restricted fund or
- an endowment fund.

Restricted funds are those where the donor has provided for the donation to be spent in furtherance of a specified charitable purpose.

Endowment funds arise when the donor has expressly provided that the gift is to be invested and only the income of the fund may be spent. These funds are sub analysed between those where the trustee has the discretion to spend the capital (expendable endowment) and those where there is no discretion to expend the capital (permanent endowment).

The charity has no permanent expendable endowment funds.

Those funds which are neither endowment nor restricted income funds, are unrestricted income funds which are sub analysed between designated (earmarked) funds where the trustee has set aside amounts to be used for specific purposes or which reflect the non-binding wishes of donors and unrestricted funds which are at the trustee's discretion, including the general fund which represents the charity's reserves.

The major funds held in each of these categories are disclosed in note 19.

c) Incoming Resources

All incoming resources are recognised once the charity has entitlement to the resources, it is probable (more likely than not) that the resources will be received and the monetary value of incoming resources can be measured with sufficient reliability.

Where there are terms or conditions attached to incoming resources, particularly grants, then these terms or conditions must be met before the income is recognised as the entitlement condition will not be satisfied until that point. Where terms or conditions have not been met or uncertainty exists as to whether they can be met then the relevant income is not recognised in the year but deferred and shown on the balance sheet as deferred income.

d) Gifts in Kind

Gifts in kind, such as food and care packages are not accounted for when they are accepted and immediately distributed unless a single donation is material.

The vast majority of items donated to Airedale Hospital & Community Charity fell into this category.

Gifts of tangible assets such as TV's, microwaves and fridges, which have an individual value of at least £100, are recognised as a donation at fair value (market price) on receipt and charitable expenditure when they are distributed. In 2024/25, £100 has been included in donations and expenditure to reflect this (2023/24 £nil).

Where gifts in kind are held before being distributed to beneficiaries, they are recognised at fair value as stock until they are distributed. No items were undistributed as at 31st March or had no fair value.

e) Incoming Resources from Legacies

Legacies are accounted for as incoming resources either upon receipt or where the receipt of the legacy is probable.

Receipt is probable when:

- confirmation has been received from the representatives of the estate(s) that probate has been granted
- the executors have established that there are sufficient assets in the estate to pay the legacy and
- all conditions attached to the legacy have been fulfilled or are within the charity's control.

If there is uncertainty as to the amount of the legacy and it cannot be reliably estimated then the legacy is shown as a contingent asset until all of the conditions for income recognition are met.

f) Resources expended and irrecoverable VAT

All expenditure is accounted for on an accruals basis and has been classified under headings that aggregate all costs related to each category of expense shown in the Statement of Financial Activities. Expenditure is recognised when the following criteria are met:

- there is a present legal or constructive obligation resulting from a past event
- it is more likely than not that a transfer of benefits (usually a cash payment) will be required in settlement
- the amount of the obligation can be measured or estimated reliably.

Irrecoverable VAT is charged against the category of resources expended for which it was incurred.

g) Recognition of expenditure and associated liabilities as a result of grant

Grants payable are payments made to linked, related party or third party NHS bodies and non NHS bodies, in furtherance of the charitable objectives of the funds held on trust, primarily relief of those who are sick.

Grant payments are recognised as expenditure when the conditions for their payment have been met or where there is a constructive obligation to make a payment.

A constructive obligation arises when:

- the charity has communicated its intention to award a grant to a recipient who then has a reasonable expectation that they will receive a grant or
- the charity has made a public announcement about a commitment which is specific enough for the recipient to have a reasonable expectation that they will receive a grant or
- there is an established pattern of practice which indicates to the recipient that we will honour our commitment.

The trustee has control over the amount and timing of grant payments and consequently where approval has been given by the charitable fund committee, on behalf of the trustee, and any of the above criteria have been met then a liability is recognised. Grants are not usually awarded with conditions attached. However, when they are then those conditions have to be met before the liability is recognised.

Where an intention has not been communicated, then no expenditure is recognised but an appropriate designation is made in the appropriate fund. If a grant has been offered but there is

uncertainty as to whether it will be accepted or whether conditions will be met then no liability is recognised but a contingent liability is disclosed.

h) Allocation of support costs

Support costs are those costs which do not relate directly to a single activity. These include some staff costs, costs of administration and independent examination costs. Support costs have been apportioned between fundraising costs and charitable activities on an appropriate basis.

The analysis of support costs are shown in note 10.

i) Fundraising costs

The costs of generating funds are those costs attributable to generating income for the charity, other than those costs incurred in undertaking charitable activities or the costs incurred in undertaking trading activities in furtherance of the charity's objects. The costs of generating funds represent fundraising costs together with investment management fees.

j) Charitable activities

Costs of charitable activities comprise all costs incurred in the pursuit of the charitable objects of the charity. These costs, where not wholly attributable, are apportioned between the categories of charitable expenditure in addition to the direct costs. The total costs of each category of charitable expenditure include an apportionment of support costs as shown in note 8.

k) Fixed Asset Investments

Investments are a form of basic financial instrument. Fixed asset investments are initially recognised at their transaction value and are subsequently measured at their fair value (market value) as at the balance sheet date. The Statement of Financial Activities includes the net gains and losses arising on revaluation and disposals throughout the year. Quoted stocks and shares are included in the Balance Sheet at the current market value quoted by the investment analyst, excluding dividend. Other investments are included at the trustee's best estimate of market value.

The main form of financial risk faced by the charity is that of volatility in equity markets and investment markets due to wider economic conditions, the attitude of investors to investment risk, and changes in sentiment concerning equities and within

particular sectors or sub sectors

All investments are held in a portfolio which are managed by Rathbone LLP.

Further information on the investments can be found in note 14.

l) Debtors

Debtors are amounts owed to the charity. They are measured on the basis of their recoverable amount.

m) Cash and cash equivalents

Cash at bank and in hand is held to meet the day to day running costs of the charity as they fall due. Cash equivalents are short term, highly liquid investments, held in interest bearing savings accounts.

n) Creditors

Creditors are amounts owed by the charity. They are measured at the amount that the charity expects to have to pay to settle the debt.

Amounts which are owed in more than a year are shown as long term creditors. At the accounting date, Airedale Hospital and Community Charity had no long term creditors.

o) Realised gains and losses

All gains and losses are taken to the Statement of Financial Activities as they arise. Realised gains and losses on investments are calculated as the difference between sales proceeds and opening carrying value (purchase date if later). Unrealised gains and losses are calculated as the difference between the market value at the year end and opening carrying value (or purchase date if later).

p) Staff costs and pensions

There are no staff directly employed by the charity. However, the Charity Manager, Charity Assistant and Community Fundraiser employed by Airedale NHS Foundation Trust are considered to be employees of the charity employed by a related party.

Airedale NHS Foundation Trust re-charge the Charity for support costs which include a percentage of costs for several members of staff.

These staff members belong to the NHS Pension Scheme which is an unfunded defined benefit scheme which is accounted for as a defined contribution scheme. The recharge from Airedale NHS Foundation Trust includes the employee contributions to that scheme. For more information on the NHS Pension Scheme refer to the Airedale NHS Foundation Trust annual report and accounts.

2) Related Party Transactions

Airedale NHS Foundation Trust is the corporate trustee of the Airedale Hospital and Community Charity and is its main grant beneficiary - they are therefore related parties. Grants paid by the charity to Airedale NHS Foundation Trust are detailed in note 9. Airedale NHS Foundation Trust makes a number of clerical and transaction services available to the charity, in accordance with a service level agreement. These include:

- fundraising services at a cost of £120k (£90k in 2023/24) - see note 7
- financial administrative services at a cost of £30k (£33k in 2023/24) in support of the charity's grant making activities which are included within support costs - see note 10

The charges made by Airedale NHS Foundation Trust for fundraising services constitute the costs of the Charity Manager, Charity Assistant and Community Fundraiser . The amounts paid for administrative services are due under a service level agreement and are set at an amount which allows Airedale NHS Foundation Trust to recover its costs.

None of the members of the Airedale NHS Foundation Trust Board or parties related to them has undertaken any transactions with the Airedale Hospital and Community Charity or received any benefit from the charity in payment in kind. Board members received no honoraria, expenses or emoluments in the year.

3) Income from donations and legacies

	Unrestricted funds		Restricted funds		Total	
	2024/25	2023/24	2024/25	2023/24	2024/25	2023/24
	£000	£000	£000	£000	£000	£000
Donations	109	92	0	0	109	92
Legacies	30	13	0	0	30	13
Grants receivable	0	0	0	49	0	49
Gifts in Kind (material)	0	0	0	0	0	0
Total	139	105	0	49	139	154

Donations contains corporate donations and gifts from individuals i.e. members of the public, relatives of patients and staff.

4) Income from other trading activities

	Unrestricted funds		Restricted funds		Total	
	2024/25	2023/24	2024/25	2023/24	2024/25	2023/24
	£0	£0	£0	£0	£0	£0
Fundraising Income	95	86	0	0	95	86
Total	95	86	0	0	95	86

5) Role of Volunteers

Like all charities, the Airedale Hospital and Community Charity is reliant on a team of volunteers for its smooth running. Our volunteers perform the following role:

- fund advisors - there are circa 70 Airedale NHS Foundation Trust staff who support the charitable funds committee when deciding how the charity's designated funds should be spent. These funds are designated (or earmarked) by the charitable fund committee to be spent for a particular purpose or in a particular ward or department. Each fund advisor has delegated powers to use the designated funds in accordance with the committee's wishes. The committee determines what each fund can be spent on and the amount that can be spent in a year.
- fundraisers - there are currently 4 local volunteers who actively fundraise for Airedale Hospital and Community Charity.
- In accordance with the SORP, due to the absence of any reliable measurement basis, the contribution of these volunteers is not recognised in the accounts.

6) Gross investment income

	Unrestricted funds		Restricted funds		Total	
	2024/25	2023/24	2024/25	2023/24	2024/25	2023/24
	£000	£000	£000	£000	£000	£000
Investments listed on Stock Exchange	16	16	0	0	16	16
Other Investments	0	0	0	0	0	0
Bank Interest	23	25	0	0	23	25
Total	39	41	0	0	39	41

7) Analysis of expenditure on raising funds

	Unrestricted funds		Restricted funds		Total	
	2024/25	2023/24	2024/25	2023/24	2024/25	2023/24
	£000	£000	£000	£000	£000	£000
Charity Manager*	59	53	0	0	59	53
Community Fundraiser**	30	15	0	24	30	39
Comms and Charity Assistant***	40	22	0	0	40	22
Other	18	13	0	0	18	13
Total	147	103	0	24	147	127

* Employed since August 2019 by Airedale NHS Foundation Trust.

** Employed since Feb 2023 by Airedale NHS Foundation Trust.

*** Employed since April 2024 by Airedale NHS Foundation Trust.

8) Analysis of charitable expenditure

'The charity did not undertake any direct charitable activities on its own account during the year. All of the charitable expenditure was in the form of grant funding.

Grants were approved in favour of Airedale NHS Foundation Trust, to carry out activities that will benefit NHS patients and their families.

	Grant funded activity		Total	
	2024/25	2023/24	2024/25	2023/24
	£000	£000	£000	£000
Patients welfare and amenities	29	23	29	23
Staff welfare and amenities	15	30	15	30
Staff Training	6	16	6	16
Medical Equipment	3	22	3	22
IT Equipment	0	0	0	0
Ward Environment	10	95	10	95
Gifts in Kind (Material - distributed)	0	0	0	0
Total	63	186	63	186

9) Analysis of grants

'The charity does not make grants to individuals. All grants are made to the Airedale NHS Foundation Trust to provide for the care of NHS patients in furtherance of our charitable aims. The total cost of making grants, including support costs, is disclosed on the face of the Statement of Financial Activities and the actual funds spent on each category of charitable activity, is disclosed in note 8.

'The trustee operates a scheme of delegation for charitable funds, under which fund advisors initiate the day to day disbursements on their projects in accordance with the directions set out in standing orders and financial instructions:

Institution receiving grant support:	Total amount paid	Total amount paid
	2024/25	2023/24
	£000	£000
Airedale NHS Foundation Trust	63	186
Total	63	186

10) Allocation of support costs and overheads

Support and overhead costs are allocated against charitable activities. Governance costs are those support costs which relate to the strategic and day to day management of a charity. The bases of allocation used is as follows:

- expenditure: this is a proportion based on the average fund balance during the year. This is used where the trustee considers this is a more equitable treatment to avoid disadvantaging funds with high volume, low value transactions.

	Charitable Activities		Basis
	2024/25	2023/24	
	£000	£000	
Independent Examination	1	2	Expenditure
Investment Management	1	1	Expenditure
Financial administration	30	33	Expenditure
Bank Charges	2	1	Expenditure
Total	34	37	

There are no support staff directly employed by the charity. Recharges are made for Trust staff time. The recharge is shown on the Financial Administration line.

	Unrestricted funds		Restricted funds		Total	
	2024/25	2023/24	2024/25	2022/23	2024/25	2023/24
	£000	£000	£000	£000	£000	£000
Charitable activities	34	37	0	0	34	37
Total	34	37	0	0	34	37

11) Analysis of staff costs and remuneration of key management personnel

	2024/25	2023/24
	£000	£000
Salaries & wages	95	86
Social Security Costs	10	10
Employers pension contribution	15	13
Total	120	109

The average number of full-time equivalent employees (employed by a related party) during the year was 3.1 (2023/24: 3), providing fundraising services to the charity.

12) Trustee remuneration, benefits and expenses

Members of Airedale NHS Foundation Trust board give their time freely and receive no remuneration for the work that they undertake in relation to Airedale Hospital and Community Charity.

13) Independent Examiner's remuneration

The independent examiner's remuneration of £1k (2023/24: £2k) related solely to the independent examination with no other additional work being undertaken (2023/24 £nil). Independent Examination is permitted by the Charities Commission for a charity of this size. Independent examination is a 'light touch' scrutiny involving the examiner checking for specific matters only. Because it is narrowly defined and does not involve forming an opinion as to whether the accounts are 'true and fair', the fees are reduced.

14) Fixed Asset investments

Movement in fixed asset investments	2024/25	2023/24
	£000	£000
Market value brought forward	598	557
Add: additions to investments at cost	0	0
Less disposals at carrying value	(1)	(1)
Add net gain (loss) on revaluation	(14)	42
Market value as at 31 March	583	598

Fixed asset investments by type	2024/25	2023/24
	£000	£000
UK Equities & Equity Funds	583	598
Total	583	598

All investments are carried at their fair value.

The charitable funds committee sets 5% of market value as at 31 March as the threshold for reporting material investments. As at 31 March 2025 the following investment was considered material:

Investment	2024/25	2024/25	2023/24	2023/24
	£000	% age	£000	% age
Rathbone Unit Trust Management Core Investment Fund for Charities	583	100%	598	100%
Mayfair Capital in Property Income Trust for Charities	0	0%	0	0%
Castlefield Best Sustainable Income fund	0	0%	0	0%
Castlefield Real Return fund	0	0%	0	0%
Castlefield Best Sustainable UK Smaller Companies Fund	0	0%	0	0%
Total	583	100%	598	100%

The main risk from financial instruments lies in the combination of uncertain investment markets and volatility in yield. The impact of rapidly rising interest rates over the last year have caused stress in financial markets.

Airedale Hospital and Community Charity manages these investment risks by retaining expert advisors (for 2024/25 - Rathbones LLP) and operating an investment policy that provides for a high degree of diversification of holdings within investment asset classes. All investments were made in companies listed on a UK stock exchange or incorporated in the UK and therefore all investments are treated as investment assets in the UK.

15) Analysis of current debtors

Debtors under 1 year	2024/25	2023/24
	£000	£000
Other debtors	5	1
Total	5	1

16) Analysis of cash and cash equivalents

	2024/25	2023/24
	£000	£000
RBS Bank Account	489	500
Barclays Current Account	23	34
Investment account (cash held)	1	1
Total cash and cash equivalents	513	535

17) Analysis of liabilities

	2024/25	2023/24
	£000	£000
Creditors falling due within 1 year		
Other creditors	39	92
Total	39	92

Other creditors represent sums owed at the year end by the charity to a related party, Airedale NHS Foundation Trust, for costs incurred by the Trust on behalf of the charity in the furtherance of the charity's objectives.

	2024/25	2023/24
	£000	£000
Deferred income		
Grants received - restricted funds	34	29
Total	34	29

18) Reconciliation of net income (expenditure) to net cash flow from operating activities

	2024/25	2023/24
	£000	£000
Net income/(expenditure) for 2024/25 (as per the Statement of Financial Activities)	15	(27)
Adjustments for:		
(Gains)/Losses on investments	14	(42)
Dividends, interest and rents from investments	(39)	(41)
(Increase)/decrease in debtors	(4)	3
Increase/(decrease) in creditors	(48)	16
Net cash provided by (used in) operating activities	(62)	(91)

19) Analysis of charitable funds

a) Analysis of endowment fund movements

	Fund balance brought forward 1		Income		Expenditure		Transfers		Gains and Losses		Fund balance carried forward 31	
	2024/ 25	2023/ 24	2024/ 25	2023/ 24	2024/ 25	2023/ 24	2024/ 25	2023/ 24	2024/ 25	2023/ 24	2024/ 25	2023/ 24
	£000	£000	£000	£000	£000	£000	£000	£000	£000	£000	£000	£000
W.N. Allen	0	4	0	0	0	0	0	-4	0	0	0	0
Total	0	4	0	0	0	0	0	-4	0	0	0	0

b) Analysis of unrestricted and material designated fund movements

	Fund balance brought forward 1 April		Income		Expenditure		Transfers		Gains and Losses		Fund balance carried forward 31 March	
Fund name	2024 /25	2023 /24	2024 /25	2023 /24	2024 /25	2023 /24	2024 /25	2023 /24	2024 /25	2023 /24	2024 /25	2023 /24
	£000	£000	£000	£000	£000	£000	£000	£000	£000	£000	£000	£000
HODU	96	60	49	44	(14)	(11)	0	0	1	3	132	96
People Health and	135	220	21	15	(28)	(108)	0	0	2	8	130	135
Where its Needed	178	161	49	105	(122)	(100)	0	4	2	8	107	178
Airedale Breast Unit	95	94	8	11	(14)	(14)	0	0	1	4	90	95
ED Appeal	50	14	29	40	(9)	(6)	0	0	1	2	71	50
Allum Legacy	46	44	1	0	(1)	0	0	0	1	2	47	46
Airedale Baby & Child	27	17	36	14	(21)	(5)	0	0	0	1	42	27
Diabetic Fund	42	45	2	0	(4)	(5)	0	0	1	2	41	42
Pathology Researc	37	37	2	1	(4)	(3)	0	0	1	2	36	37
Coughlin Legacy	0	0	25	0	0	0	0	0	0	0	25	0
Other	307	344	49	49	(53)	(95)	0	0	4	9	307	307
Total	1,013	1,036	271	279	(270)	(347)	0	4	14	41	1,028	1,013

c) Analysis of restricted fund movements

	Fund balance brought forward 1 April		Income		Expenditure		Transfers		Gains and Losses		Fund balance carried forward 31 March	
Fund name	2024 /25	2023/ 24	2024 /25	2023/ 24	2024 /25	2023/ 24	2024 /25	2023/ 24	2024 /25	2023/ 24	2024 /25	2023/ 24
	£000	£000	£000	£000	£000	£000	£000	£000	£000	£000	£000	£000
WIN fund	0	0	0	45	0	(45)	0	0	0	0	0	0
ED Fund	0	0	0	2	0	(2)	0	0	0	0	0	0
Total	0	0	0	47	0	(47)	0	0	0	0	0	0

**Independent Examiner's Report to the Trustee of
of Airedale Hospital & Community Charity**

Independent examiner's report to the trustee of Airedale Hospital & Community Charity

I report to the charity trustee on my examination of the accounts of Airedale Hospital & Community Charity (the Trust) for the year ended 31 March 2025.

Responsibilities and basis of report

As the charity trustee of the Trust you are responsible for the preparation of the accounts in accordance with the requirements of the Charities Act 2011 ('the Act').

I report in respect of my examination of the Trust's accounts carried out under section 145 of the Act and in carrying out my examination I have followed all applicable Directions given by the Charity Commission under section 145(5)(b) of the Act.

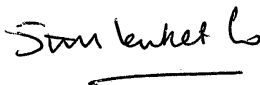
Independent examiner's statement

Since your charity's gross income exceeded £250,000 your examiner must be a member of a listed body. I can confirm that I am qualified to undertake the examination because I am a registered member of the Institute of Chartered Accountants in England & Wales which is one of the listed bodies.

I have completed my examination. I confirm that no material matters have come to my attention in connection with the examination giving me cause to believe that in any material respect:

1. accounting records were not kept in respect of the Trust as required by section 130 of the Act; or
2. the accounts do not accord with those records; or
3. the accounts do not comply with the applicable requirements concerning the form and content of accounts set out in the Charities (Accounts and Reports) Regulations 2008 other than any requirement that the accounts give a true and fair view which is not a matter considered as part of an independent examination.

I have no concerns and have come across no other matters in connection with the examination to which attention should be drawn in this report in order to enable a proper understanding of the accounts to be reached.



Richard J Hudson FCA
Stirk Lambert & Co
Chartered Accountants
Russell Chambers
61a North Street
Keighley
West Yorkshire
BD21 3DS

21/10/2025