



**AGM Report
&
Audited Accounts
2020-2021**

Contents

- Staffing Structure
 - Committee Members
 - Chair Persons Report
 - CEOs Report
 - Key Services
 - Recent Work and Future Vision
 - Audited Accounts 2020/21
-

Registered Office:

Community by Nature

40-42 Hertford Road

Bootle L20 7DH

Tel: 0151 933 2363

Company Limited by Guarantee No: 3030362

Registered Charity Number: 1050226

Website: www.communitybynature.org.uk

Email: info@communitybynature.org.uk

Aim:

The charities main aim is to improve the health, wellbeing and life chances of people and communities experiencing significant disadvantage in Sefton and across Liverpool City Region through community learning and support, play and forest school.

Significant Activities:

In order to achieve this aim we offer:

Play and forest school sessions, events and programmes for children and young people

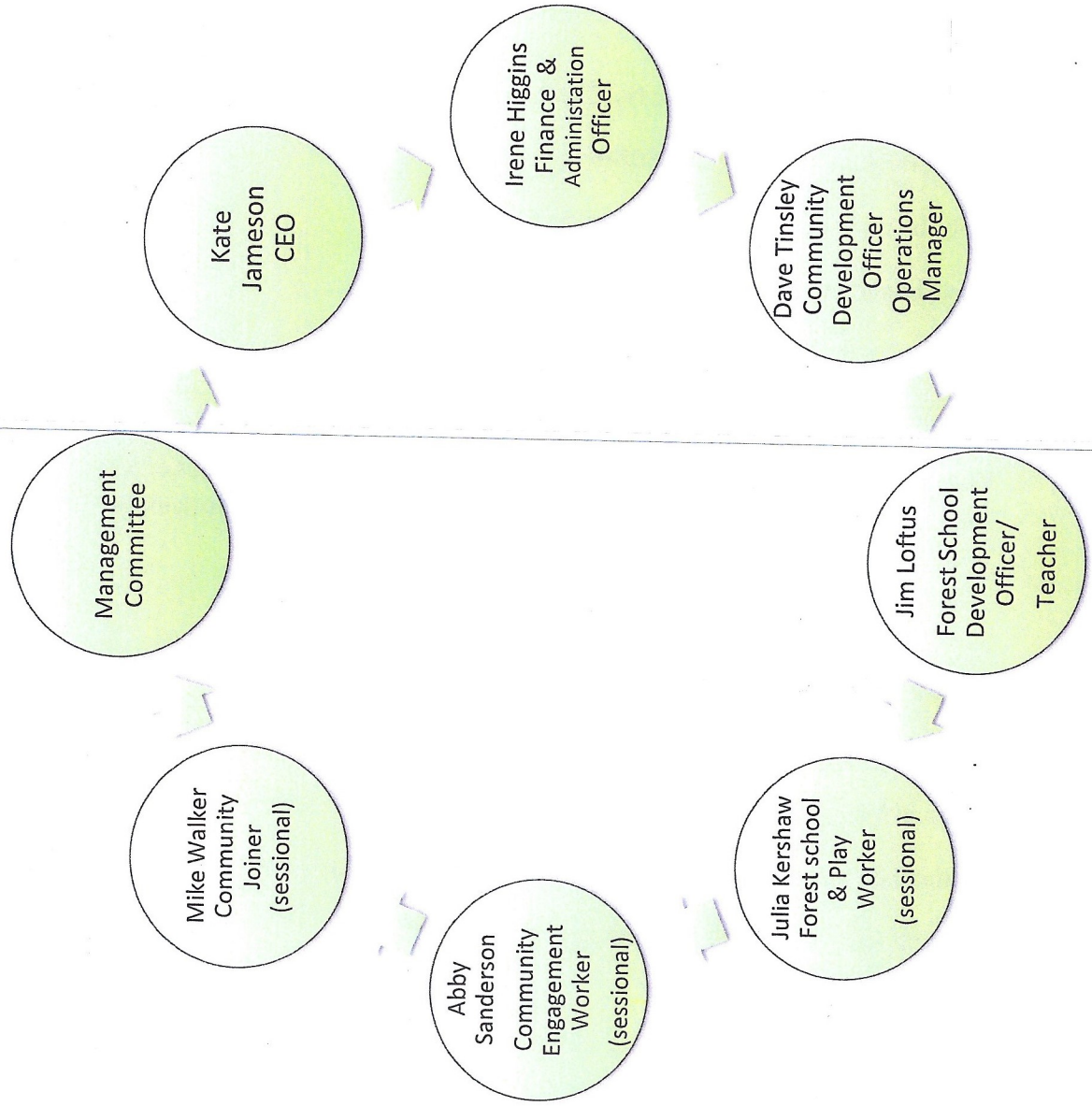
Community training and support activities including youth activities

Play and forest school training and support

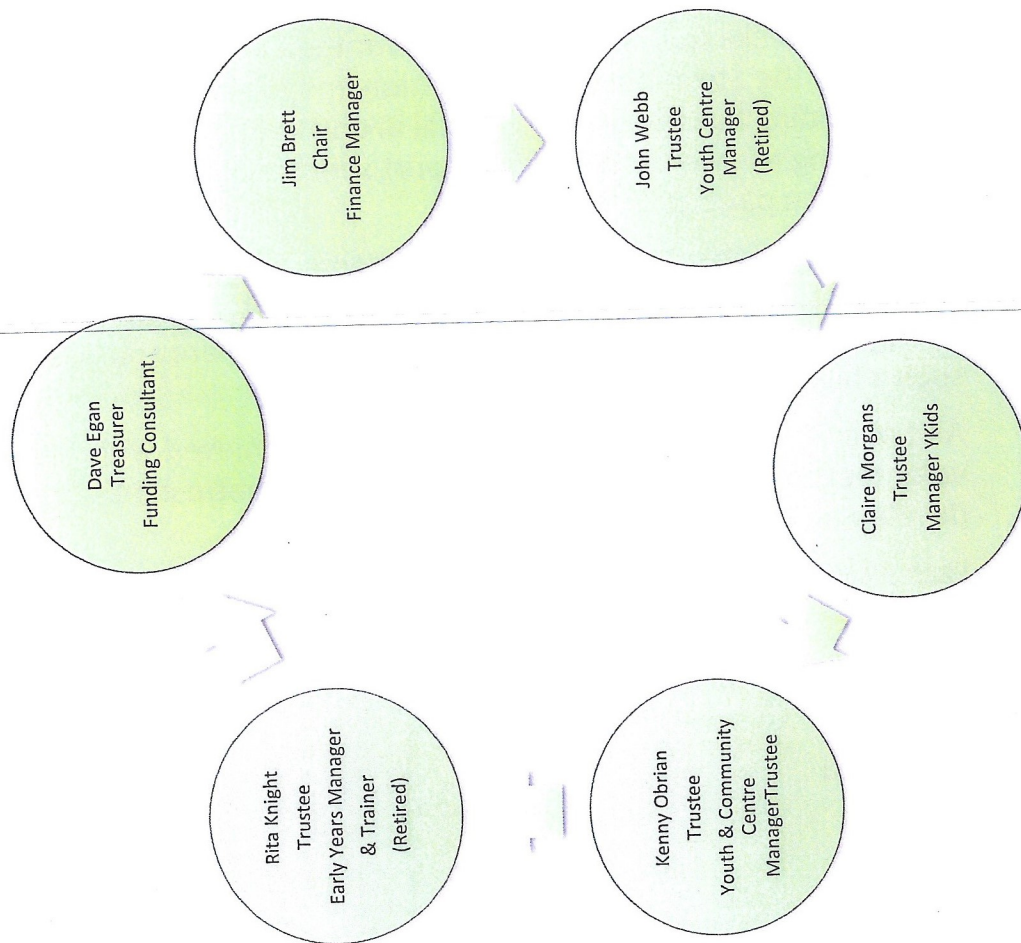
Background:

Community by Nature (formerly Sefton Play Council) was established in March 1995 with the original aim of providing play support, training and resources for community groups working with children and young people in areas of disadvantage.

Staff Structure



Management Committee Roles & Expertise



Chair Persons Annual Report 2021

Welcome to our Annual General Meeting for 2021.

Given what has happened over the past year, and the professional and personal challenges involved, it is simply wonderful to witness the resilience and commitment of Community By Nature staff and volunteers. This has meant we remain stable and secure, and on behalf of the Board, I would like to take this opportunity to express our deepest gratitude to everybody involved in that process.

I would also like to thank our funders for their support through the year in particular the Steve Morgan Foundation and Children in Need whose on going funding has been instrumental in ensuring our sustainability, as well as enabling us to offer tailored support services to our community through the pandemic.

I would like to thank all our visitors, learners, and the entire local community. Working together during this period has highlighted the strength and depth of relationships that mean we are still able to provide such a high-quality service.

And of course, none of these things could be achieved without our volunteers whose support is invaluable as our centre continues to develop and adapt according to local need.

I am also very grateful to my fellow Board colleagues, who committed substantial time and energy to Community By Nature during the past year.

Thank you

Jim Brett

This year, the on going presence Covid 19 has brought many challenges as well as developments for our charity. The needs of the community remain our firm priority and I am proud of our on going commitment to support the most vulnerable people in our area at this difficult time.

We continue to receive funding from the Steve Morgan Foundation for our community development activity, which is more crucial than ever as we support our community to rebuild as Covid 19 continues. Children in Need have also provided on going funding support in the past 12 months, fully supporting project adaptations to enable us to reach and engage the most vulnerable children and families as the pandemic continues. Both of these funding stream remain invaluable to us.

We have also been successful in accessing further funding from a range of external sources including ESF Community Learning Fund, National Lottery Community Fund, Sefton Council this year.

This year we have worked in partnership with academic researchers from LJMU on an exciting research project to demonstrate the impact of our forest school and outdoor learning projects. Preliminary results indicate that our projects have significant impact on confidence and resilience of young people who engage. These finding are due to be published in a paper later this year which will further raise the profile of our forest school provision for young people.

In summer we welcomed the return of all face to face community activity. Our Community Centre is now thriving with a wide range of community services and activities on offer 7 days a week, supporting the most vulnerable people to rebuild in strength and resilience after Covid 19.

Demand for our services is now starting to exceed the capacity of our building. We recently advertised our forthcoming Christmas party with Santa in his log cabin and real reindeers and tickets were snapped up within 24 hours!

I would like to thank all our staff for their hard work over the past year which has once again been challenging, as well as our volunteers - whose support is invaluable. I would like to thank our committee for their valued advice and support over the past 12 months.

We look at the future with excitement and enthusiasm. We will be introducing a famous ambassador for our Charity this month who has approached us given the impact of our provision for young people and community members from unstable, chaotic backgrounds of deprivation and disadvantage. Watch this space!

Kate Jameson- CEO.

What we offer.....

Community Activities

Community by Nature (CBN) offers a range of services and support for the local community including weekly play sessions for children, youth clubs, family open days, parent and toddler play sessions, youth clubs for young people with disabilities and an over 55s club, a walking club, trips & outings, community gardening and growing, IT for beginners, smoking sensations.

Throughout the Covid 19 pandemic we have diversified and adapted our projects to support the needs of our community. Our services have included emergency food and toiletry parcels, a shopping and prescription pick-up service, zoom, door-step, telephone wellbeing visits/chats, delivery of play packs and forest school activity pack for children and young people in the community

As restrictions began to lift we facilitated outdoor forest school family sessions where individual families engaged in wood craft, cooking on open fire, shelter building. All of our services are led by community need.

Training

Community by Nature offers a progression route for training from introductory community learning and play, forest school and youth programmes through to the National Open College Network (NOCN) Level 1, 2 and 3 Nationally Accredited Forest Leaders Awards.

We also offer are the John Muir Environmental Awards which are nationally accredited awards accrediting basic environmental and conservation skills and knowledge. From next year we will be offering the Duke of Edinburgh Awards for young people in Sefton on behalf of Sefton Youth Service.

We have NOCN centre approval for, and can offer entry level functional Skills in English and Maths. We also offer the National Open College Networks Certificate in Skills for Employment and Professional Development – a tailor made introductory learning programmes with flexibility to incorporate forest school, literacy and numeracy team building, personal progression, health and fitness and much more.

Details of some of the training programmes we offer are as follows:

Introduction to Forest School

This programme introduces learners to the principles of forest school and provides insight into basic forest school activities.

Level 2 Forest School Assistant Award

This programme provides learners with the skills and knowledge to become a forest school assistant, assisting in the facilitation of forest school activities and programmes.

Level 3 Forest School Leaders Award

This programme provides learners with the knowledge and skills to plan and facilitate forest school programmes and manage forest school sites.

Playwork

We offer a tailor made introductory 15-hour playwork level 1 programme which introduces practical play ideas, principles & practice, child centred play, building relationships.

Workshops

We offer a range of workshops including:

Forest School Taster Session

Fire Lighting

Risk in Play

Natural Arts

Safeguarding

Forest School

We offer Forest school, an innovative educational approach to outdoor play and learning. The philosophy of forest school is to encourage and inspire children through positive outdoor experiences.

Forest school consists of a series of outdoor activities which are physical, educational and conservational. Children and young people use full sized tools, play, learn boundaries of behaviour both physical and social, take risks and make mistakes. Our forest school sessions are fully inclusive.

Community by Natures forest school sessions aim to promote children and young peoples' self-esteem, independence, emotional resilience, team building and social skills. One of our objectives is to promote children and young peoples' interest in and enthusiasm for active outdoor play.

Our forest school sessions involve facilitating a range of activities including shelter building, team games, tool use, building camp fires and outdoor cooking, woodland crafts, building rope structures etc. The forest school experiences we facilitate offer risk and challenge, capturing the interest and motivation of children and young people.

Our forest school sessions can be held on or off site, at one of our chosen local woodland venues. Sessions/programmes are available all year round for children from 3 years up to 16 years. We can offer one off taster sessions or a forest school programme. We currently work in partnership with primary and secondary schools delivering forest school programmes across Liverpool City Region.

We also offer forest school residentials, held at a fantastic woodland setting in the North West, with log cabin accommodation.

Team Building

We offer team building workshops and residentials for workplaces. Our team building exercises are based around forest school activities and include building fires, outdoor cooking, rope structures, shelter building.. and more. Our team building workshops/residentials are held in one of our fantastic woodland outreach venues. All of our team building workshops/residentials are tailored to meet the needs of the organisation.

Room Hire

We have a large community room and large training room and outdoor space available for hire for meetings, training etc. at a very competitive rate.

Our work over the past year....

The past 12 months have been exciting yet challenging. Like everyone we faced an uncertain start to the year. Having looked forward to restarting our face to face provision in January – we were halted in our tracks with another lock down.

We adapted our provision once again to support the community through this lockdown. Our services included emergency food and toiletry parcels, a shopping and prescription pick-up service, zoom, door-step, telephone wellbeing visits/chats, delivery of play packs and forest school activity pack for children and young people in the community.

Again we maintained regular contact with our community throughout via door step visits, telephone and zoom. Some of our staff were furloughed (part-time) at this time given the reduction of workload with regards to school and face to face community projects.

In April we began restarting face to face community groups for our most vulnerable community members once again in line with Covid regulations. As restrictions lifted slightly we facilitated outdoor forest school family sessions where individual families engaged in wood craft, cooking on open fire, shelter building. All of our services are led by community need.

In April, as schools reopened, we restarted a limited number of Mersey Forest forest school programmes working with primary schools across Liverpool City Region facilitating a 12-week forest school project in each school.

This year we changed our Alternative Education project to work with young people at risk of exclusion and struggling with main stream education in partnership with secondary schools. This is due to the change in structure of Alternative Education in Liverpool who now only work with Ofsted registered provision.

In Spring we finally started our Youth Endowment Fund capacity building project which had been delayed significantly through Covid. We worked in partnership with LJMU to develop our impact evaluation and evidence base for our outdoor learning projects. As part of this project LJMU researched the impact of our project on the emotional wellbeing and resilience of young people who engaged in our programme at Gateacre High School.

Initial finding indicate that this programme had significant impact. This valuable research is due to be published into a paper later in the year and will raise the profile of forest school programmes with young people and hopefully support us to access further commissions and funding streams in future.

By June once restrictions lifted our centre began to thriving once again with weekly community activities including out of school activity clubs, youth clubs, parent and toddler

play sessions, youth clubs for young people with disabilities, over 55s club, a walking club, trips & outings, community gardening and growing, IT programmes, smoking sensations. We also managed to start our ESF/WEA community learning projects which had again been significantly delayed due to government lockdowns.

The centre is now busier than ever to the extent we now have to issue tickets for community events. We have almost 200 at our last family fun day in October. We have increased our visibility on social media to further promote our valuable community services.

We have been successful in accessing a range of funding in the past 12 including WEA Community Fund, Lottery Community Fund. We also continue to access funding from the Steve Morgan Foundation for our Community Development Coordinators post as well as Children in Need for our forest play project with children and young people which is invaluable.

Our Mersey Forest project as well as increased focus on outdoor education has led to increased demand for our level 3 forest school training programmes and workshops in the last 12 months. We now run level 3 forest school training programmes on a bi-monthly basis. These programmes are based at our centre which is an ideal venue with perfect in and outdoor space for this training.

As well as our large projects, we continue to work in partnership with community groups, youth groups and out of school across Merseyside facilitating play and forest school workshops, programmes and events in house and at woodland play and residential play settings.

We are continually developing the centre. In the past 6 months we have further developed the forest school site and completed a workshop on the site in participation with the community. This wooden lodge will be transformed into Santa grotto later in this month!

The past 12 months has shown once again how resilient and adaptable we are as an organisation. We are excited about the coming year. We have several long term projects in place and, with published research, have opportunity to further demonstrate the impact of the excellent projects we facilitate.

This month we are due to introduce a famous ambassador for our Charity who we were approached by late summer this year in recognition of the transformational impact of our projects for young people and community members who face extreme deprivation and chaotic home-lives, who turned to crime and drugs and lost their way. What this space.....

A very big thank you to our funders and supporters in 2021

The Steve Morgan Foundation

Children in Need

Sefton Council

Liverpool Council

Youth Endowment Fund

WEA/ESF Community Learning Fund

Lottery – Community Fund

Cash for Kids

Our Aims for 2022

To continue to develop community activity and services at our centre in partnership with local residents according to current need

To expand the reach of our charity in partnership with our new ambassador

To continue to develop and expand forest school programmes across Merseyside and beyond

To continue developing and promoting our forest school training including our level 3 forest school training programme, promoting our forest school training in new areas

To review our vision, aims and objectives

To review our constitution/memorandum in light of developments in vision, aims and objectives

To continue to seek opportunities for long term sustainability

To continue to develop the physical space both indoors and outdoors at our community centre in partnership with the local community and our service users

Report of the Trustees and
Financial Statements for the Year Ended 31 March 2021
for
Community By Nature Limited

V & R Accountancy Services
Chartered Certified Accountants
Cropton House
Three Tuns Lane
Formby
Merseyside
L37 4AQ

Community By Nature Limited

Contents of the Financial Statements
for the Year Ended 31 March 2021

	Page
Report of the Trustees	1 to 4
Independent Examiner's Report	5
Statement of Financial Activities	6
Balance Sheet	7
Notes to the Financial Statements	8 to 12
Detailed Statement of Financial Activities	13 to 14

Report of the Trustees
for the Year Ended 31 March 2021

The trustees who are also directors of the charity for the purposes of the Companies Act 2006, present their report with the financial statements of the charity for the year ended 31 March 2021. The trustees have adopted the provisions of Accounting and Reporting by Charities: Statement of Recommended Practice applicable to charities preparing their accounts in accordance with the Financial Reporting Standard applicable in the UK and Republic of Ireland (FRS 102) (effective 1 January 2019).

OBJECTIVES AND ACTIVITIES

Objectives and aims

The charity's main aim is to enhance the wellbeing and life chances of children and adults in areas of deprivation in Sefton and surrounding local authorities by encouraging participation in community learning and support, play and forest school.

Significant activities

The charity strives to achieve its aim by providing the following services:

- Play and forest school sessions, events and programmes for children and young people;
- Play and forest school training and support;
- Community training and support activities including youth activities.

The trustees have referred to the guidance contained in the Charity Commission's general guidance on public benefit when reviewing its aims and objectives.

ACHIEVEMENT AND PERFORMANCE

Charitable activities

The charity continues to play an active part in all aspects of play and forest school provision for children and young people of play and forest school training in the local area. In addition the charity facilitates a range of community support services for the local neighbourhood.

The charity is grateful for the efforts of its volunteers who are involved in all service provision. It is estimated that over 500 volunteer hours were provided during the year. The charity offers training and progression opportunities to volunteers.

FINANCIAL REVIEW

Principal funding sources

The principal funding sources are grants from external funding bodies, local authorities and associated local government agencies together with income generated from play and forest school provision, training, room hire and other charitable activities.

FINANCIAL REVIEW

Reserves policy

The trustees have reviewed the reserves of the charity.

Unrestricted Reserves:

- a) to provide funds which can be designated to specific projects to enable these projects to be undertaken at short notice; and
- b) to cover administration fund raising and support costs without which the charity could not function.

The trustees consider it prudent that unrestricted reserves should be sufficient

- a) to avoid the necessity of realising fixed assets held for the charity's use; and
- b) to cover 3 months administration, fund raising and support costs.

The trustees continue to monitor and review reserves, continually seeking to identify and develop opportunities for new sources of income.

Designated Fund

The trustees have considered it prudent to set aside an amount that would provide for the contractual redundancy liabilities and 3 months operational costs to cover the contractual notice of redundancy period for employees in the event that there was a decrease or withdrawal of income.

FUTURE DEVELOPMENTS

In early 2020, a new coronavirus COVID-19, impacted a significant number of countries globally. COVID-19 has caused disruption to economic activity which has been reflected in recent fluctuations in global stock markets. The Trustees consider the emergence and spread of COVID-19 to be a non-adjusting post balance sheet event. Given the inherent uncertainties, it is not practicable at the time to provide a quantitative estimate of the impact of the virus.

The trustees have considered continuity of the charity for a period of 12 months from the date of approving the accounts. Operational and cash flow activity is reviewed and monitored by the board of trustees on a regular basis and with new sources of funding secured, the trustees are confident of ensuring continued provision of the services provided by the charity. The charity will continue to develop its core activities particularly its community, play and forest school provision and training.

The trustees and management continue to seek and develop opportunities to work with similar minded organisations to expand its activities throughout the local area.

STRUCTURE, GOVERNANCE AND MANAGEMENT

Governing document

The charity is controlled by its governing document, a deed of trust, and constitutes a limited company, limited by guarantee, as defined by the Companies Act 2006.

Recruitment and appointment of new trustees

Applications for trusteeship are sought by advertisement. A trustee is appointed at a general meeting having been recommended by a serving trustee and appropriate notice to members eligible to vote has been given. A simple majority of members eligible to vote is required to appoint a trustee.

At the first Annual General Meeting all the trustees retired from office and were re-elected if they wished to continue. At every subsequent Annual General Meeting, one third of the trustees are subject to retirement by rotation. Trustees serve for a three year period and may be re-elected for a further 3 years.

STRUCTURE, GOVERNANCE AND MANAGEMENT

Organisational structure

The number of trustees shall not be less than three, and until otherwise determined by a General Meeting more than 10.

The trustees meet six times a year to review strategy and performance, to look at budgets and finances and operating plans of the Charity.

Induction and training of new trustees

New trustees receive information packs about the charity showing the previous years financial statements, various officer's reports, business plans and organisational structure. Trustees will obtain training by experience of various functional committee meetings.

Risk management

The trustees have a duty to identify and review the risks to which the charity is exposed and to ensure appropriate controls are in place to provide reasonable assurance against fraud and error.

The trustees have reviewed the controls in place and are satisfied that the risks mentioned above are minimised.

REFERENCE AND ADMINISTRATIVE DETAILS

Registered Company number

03030362 (England and Wales)

Registered Charity number

1050226

Registered office

40-42 Hertford Road
Bootle
Merseyside
L20 7DH

Trustees

J D Brett
D Egan
Mrs C A Morgans
K O'Brien
J Webb
Ms R Knight (appointed 10.12.20)

Company Secretary

Mrs C A Morgans

Independent Examiner

V & R Accountancy Services
Chartered Certified Accountants
Cropton House
Three Tuns Lane
Formby
Merseyside
L37 4AQ

Solicitors

Black Norman
67/71 Coronation Road
Crosby
Liverpool
L23 5RE

Community By Nature Limited

Report of the Trustees
for the Year Ended 31 March 2021

REFERENCE AND ADMINISTRATIVE DETAILS

Bankers

HSBC Bank Plc
107 Stanley Road
Bootle
Liverpool
L20 3DX

Approved by order of the board of trustees on 1 December 2021 and signed on its behalf by:

A handwritten signature in dark ink, appearing to read 'J D Brett', written in a cursive style.

J D Brett - Trustee

Independent examiner's report to the trustees of Community By Nature Limited ('the Company')

I report to the charity trustees on my examination of the accounts of the Company for the year ended 31 March 2021.

Responsibilities and basis of report

As the charity's trustees of the Company (and also its directors for the purposes of company law) you are responsible for the preparation of the accounts in accordance with the requirements of the Companies Act 2006 ('the 2006 Act').

Having satisfied myself that the accounts of the Company are not required to be audited under Part 16 of the 2006 Act and are eligible for independent examination, I report in respect of my examination of your charity's accounts as carried out under section 145 of the Charities Act 2011 ('the 2011 Act'). In carrying out my examination I have followed the Directions given by the Charity Commission under section 145(5) (b) of the 2011 Act.

Independent examiner's statement

I have completed my examination. I confirm that no matters have come to my attention in connection with the examination giving me cause to believe:

1. accounting records were not kept in respect of the Company as required by section 386 of the 2006 Act; or
2. the accounts do not accord with those records; or
3. the accounts do not comply with the accounting requirements of section 396 of the 2006 Act other than any requirement that the accounts give a true and fair view which is not a matter considered as part of an independent examination; or
4. the accounts have not been prepared in accordance with the methods and principles of the Statement of Recommended Practice for accounting and reporting by charities (applicable to charities preparing their accounts in accordance with the Financial Reporting Standard applicable in the UK and Republic of Ireland (FRS 102)).

I have no concerns and have come across no other matters in connection with the examination to which attention should be drawn in this report in order to enable a proper understanding of the accounts to be reached.

G J Rummens
FCCA
V & R Accountancy Services
Chartered Certified Accountants
Cropton House
Three Tuns Lane
Formby
Merseyside
L37 4AQ

1 December 2021

Community By Nature Limited

Statement of Financial Activities
for the Year Ended 31 March 2021

	Notes	Unrestricted funds £	Restricted funds £	31.3.21 Total funds £	31.3.20 Total funds £
INCOME AND ENDOWMENTS FROM					
Donations and legacies	2	520	-	520	-
Charitable activities	4				
Play and forest school provision		38,000	99,756	137,756	209,019
COVID support		72,773	20,600	93,373	-
Other trading activities	3	870	-	870	6,065
Other income		7	-	7	206
Total		<u>112,170</u>	<u>120,356</u>	<u>232,526</u>	<u>215,290</u>
EXPENDITURE ON					
Charitable activities					
Play and forest school provision		102,817	95,494	198,311	199,136
NET INCOME		<u>9,353</u>	<u>24,862</u>	<u>34,215</u>	<u>16,154</u>

RECONCILIATION OF FUNDS

Total funds brought forward	63,194	31,681	94,875	78,721
TOTAL FUNDS CARRIED FORWARD	<u>72,547</u>	<u>56,543</u>	<u>129,090</u>	<u>94,875</u>

Balance Sheet
31 March 2021

	Notes	Unrestricted funds £	Restricted funds £	31.3.21 Total funds £	31.3.20 Total funds £
FIXED ASSETS					
Tangible assets	9	20,419	-	20,419	20,097
CURRENT ASSETS					
Debtors	10	3,490	-	3,490	4,075
Cash at bank and in hand		49,640	56,542	106,182	71,663
		<u>53,130</u>	<u>56,542</u>	<u>109,672</u>	<u>75,738</u>
CREDITORS					
Amounts falling due within one year	11	(1,001)	-	(1,001)	(960)
		<u>52,129</u>	<u>56,542</u>	<u>108,671</u>	<u>74,778</u>
NET CURRENT ASSETS					
		<u>52,129</u>	<u>56,542</u>	<u>108,671</u>	<u>74,778</u>
TOTAL ASSETS LESS CURRENT LIABILITIES		<u>72,548</u>	<u>56,542</u>	<u>129,090</u>	<u>94,875</u>
NET ASSETS		<u>72,548</u>	<u>56,542</u>	<u>129,090</u>	<u>94,875</u>
FUNDS	12				
Unrestricted funds				72,548	63,194
Restricted funds				<u>56,542</u>	<u>31,681</u>
TOTAL FUNDS				<u>129,090</u>	<u>94,875</u>

The charitable company is entitled to exemption from audit under Section 477 of the Companies Act 2006 for the year ended 31 March 2021.

The members have not required the company to obtain an audit of its financial statements for the year ended 31 March 2021 in accordance with Section 476 of the Companies Act 2006.

The trustees acknowledge their responsibilities for

- ensuring that the charitable company keeps accounting records that comply with Sections 386 and 387 of the Companies Act 2006 and
- preparing financial statements which give a true and fair view of the state of affairs of the charitable company as at the end of each financial year and of its surplus or deficit for each financial year in accordance with the requirements of Sections 394 and 395 and which otherwise comply with the requirements of the Companies Act 2006 relating to financial statements, so far as applicable to the charitable company.

These financial statements have been prepared in accordance with the provisions applicable to charitable companies subject to the small companies regime.

The financial statements were approved by the Board of Trustees and authorised for issue on 1 December 2021 and were signed on its behalf by:



J D Brett - Trustee

The notes form part of these financial statements

1. ACCOUNTING POLICIES

Basis of preparing the financial statements

The financial statements of the charitable company, which is a public benefit entity under FRS 102, have been prepared in accordance with the Charities SORP (FRS 102) 'Accounting and Reporting by Charities: Statement of Recommended Practice applicable to charities preparing their accounts in accordance with the Financial Reporting Standard applicable in the UK and Republic of Ireland (FRS 102) (effective 1 January 2019)', Financial Reporting Standard 102 'The Financial Reporting Standard applicable in the UK and Republic of Ireland' and the Companies Act 2006. The financial statements have been prepared under the historical cost convention.

Income

All income is recognised in the Statement of Financial Activities once the charity has entitlement to the funds, it is probable that the income will be received and the amount can be measured reliably.

Expenditure

Liabilities are recognised as expenditure as soon as there is a legal or constructive obligation committing the charity to that expenditure, it is probable that a transfer of economic benefits will be required in settlement and the amount of the obligation can be measured reliably. Expenditure is accounted for on an accruals basis and has been classified under headings that aggregate all cost related to the category. Where costs cannot be directly attributed to particular headings they have been allocated to activities on a basis consistent with the use of resources.

Tangible fixed assets

Depreciation is provided at the following annual rates in order to write off each asset over its estimated useful life.

Play equipment	- 20% on cost
Fixtures and fittings	- 10% on cost
Motor vehicles	- 10% on cost
Office equipment	- 10% on cost

Taxation

The charity is exempt from corporation tax on its charitable activities.

Fund accounting

Unrestricted funds can be used in accordance with the charitable objectives at the discretion of the trustees.

Restricted funds can only be used for particular restricted purposes within the objects of the charity. Restrictions arise when specified by the donor or when funds are raised for particular restricted purposes.

Further explanation of the nature and purpose of each fund is included in the notes to the financial statements.

Pension costs and other post-retirement benefits

The charitable company operates a defined contribution pension scheme. Contributions payable to the charitable company's pension scheme are charged to the Statement of Financial Activities in the period to which they relate.

Notes to the Financial Statements - continued
for the Year Ended 31 March 2021

2. DONATIONS AND LEGACIES

	31.3.21	31.3.20
	£	£
Donations	520	-
	<u>520</u>	<u>-</u>

3. OTHER TRADING ACTIVITIES

	31.3.21	31.3.20
	£	£
Room hire income	870	6,065
	<u>870</u>	<u>6,065</u>

4. INCOME FROM CHARITABLE ACTIVITIES

	Activity	31.3.21	31.3.20
		£	£
Teaching grants / commissions	Play and forest school provision	17,280	24,945
General training income	Play and forest school provision	-	57,436
Forest school training	Play and forest school provision	20,720	15,520
Grants	Play and forest school provision	99,756	111,118
Grants	COVID support	93,373	-
		<u>231,129</u>	<u>209,019</u>

Grants received, included in the above, are as follows:

	31.3.21	31.3.20
	£	£
Sefton CVS	-	3,990
Steve Morgan Foundation	59,483	23,880
Youth Endowment Fund	-	31,681
BBC Children In Need	51,680	51,567
HMRC Job Retention Scheme	72,773	-
Borough of Cultures	5,000	-
Radio City	2,695	-
Taking Root	1,498	-
	<u>193,129</u>	<u>111,118</u>

5. SUPPORT COSTS

	General support costs	Governance costs	Totals
	£	£	£
Play and forest school provision	20,087	2,936	23,023
	<u>20,087</u>	<u>2,936</u>	<u>23,023</u>

Community By Nature Limited

Notes to the Financial Statements - continued
for the Year Ended 31 March 2021

6. NET INCOME/(EXPENDITURE)

Net income/(expenditure) is stated after charging/(crediting):

	31.3.21	31.3.20
	£	£
Depreciation - owned assets	<u>4,060</u>	<u>5,092</u>

7. TRUSTEES' REMUNERATION AND BENEFITS

There were no trustees' remuneration or other benefits for the year ended 31 March 2021 nor for the year ended 31 March 2020.

Trustees' expenses

There were no trustees' expenses paid for the year ended 31 March 2021 nor for the year ended 31 March 2020.

8. STAFF COSTS

The average monthly number of employees during the year was as follows:

	31.3.21	31.3.20
Charitable activities	5	4
Management and administration	<u>1</u>	<u>1</u>
	<u>6</u>	<u>5</u>

No employees received emoluments in excess of £60,000.

9. TANGIBLE FIXED ASSETS

	Play equipment £	Fixtures and fittings £	Motor vehicles £	Office equipment £	Totals £
COST					
At 1 April 2020	19,464	32,778	16,060	66,503	134,805
Additions	-	3,703	-	679	4,382
	<u>19,464</u>	<u>36,481</u>	<u>16,060</u>	<u>67,182</u>	<u>139,187</u>
At 31 March 2021	19,464	36,481	16,060	67,182	139,187
DEPRECIATION					
At 1 April 2020	19,464	16,882	14,320	64,042	114,708
Charge for year	-	3,155	290	615	4,060
	<u>19,464</u>	<u>20,037</u>	<u>14,610</u>	<u>64,657</u>	<u>118,768</u>
At 31 March 2021	19,464	20,037	14,610	64,657	118,768
NET BOOK VALUE					
At 31 March 2021	-	16,444	1,450	2,525	20,419
At 31 March 2020	-	15,896	1,740	2,461	20,097

Notes to the Financial Statements - continued
for the Year Ended 31 March 2021

10. DEBTORS: AMOUNTS FALLING DUE WITHIN ONE YEAR		31.3.21	31.3.20
		£	£
Trade debtors		<u>3,490</u>	<u>4,075</u>
11. CREDITORS: AMOUNTS FALLING DUE WITHIN ONE YEAR		31.3.21	31.3.20
		£	£
Social security and other taxes		41	-
Accruals and deferred income		<u>960</u>	<u>960</u>
		<u>1,001</u>	<u>960</u>
12. MOVEMENT IN FUNDS		Net	At
	At 1.4.20	movement	31.3.21
	£	in funds	£
Unrestricted funds			
General fund	63,194	9,354	72,548
Restricted funds			
Steve Morgan Foundation	-	24,861	24,861
Youth Endowment Fund	<u>31,681</u>	<u>-</u>	<u>31,681</u>
	<u>31,681</u>	<u>24,861</u>	<u>56,542</u>
TOTAL FUNDS	<u>94,875</u>	<u>34,215</u>	<u>129,090</u>

Net movement in funds, included in the above are as follows:

	Incoming resources £	Resources expended £	Movement in funds £
Unrestricted funds			
General fund	112,170	(102,816)	9,354
Restricted funds			
Steve Morgan Foundation	59,483	(34,622)	24,861
BBC Children In Need	51,680	(51,680)	-
Borough of Culture	5,000	(5,000)	-
Radio City	2,695	(2,695)	-
Taking Root	<u>1,498</u>	<u>(1,498)</u>	<u>-</u>
	<u>120,356</u>	<u>(95,495)</u>	<u>24,861</u>
TOTAL FUNDS	<u>232,526</u>	<u>(198,311)</u>	<u>34,215</u>

Notes to the Financial Statements - continued
for the Year Ended 31 March 2021

12. MOVEMENT IN FUNDS - continued

Comparatives for movement in funds

	At 1.4.19 £	Net movement in funds £	At 31.3.20 £
Unrestricted funds			
General fund	78,721	(15,527)	63,194
Restricted funds			
Youth Endowment Fund	-	31,681	31,681
TOTAL FUNDS	<u>78,721</u>	<u>16,154</u>	<u>94,875</u>

Comparative net movement in funds, included in the above are as follows:

	Incoming resources £	Resources expended £	Movement in funds £
Unrestricted funds			
General fund	108,162	(123,689)	(15,527)
Restricted funds			
Steve Morgan Foundation	23,880	(23,880)	-
BBC Children In Need	51,567	(51,567)	-
Youth Endowment Fund	31,681	-	31,681
	<u>107,128</u>	<u>(75,447)</u>	<u>31,681</u>
TOTAL FUNDS	<u>215,290</u>	<u>(199,136)</u>	<u>16,154</u>

13. RELATED PARTY DISCLOSURES

There were no related party transactions for the year ended 31 March 2021.