



**Norfolk & Norwich  
Hospitals Charity**

**Annual Report & Accounts  
2024/25**

**Registered Charity no: 1048170**

# Annual Report 2024/25

## Contents

2024/25 - Our year at a glance: .....	2
Foreword from the Corporate Trustee.....	4
About the N&N Hospitals Charity.....	5
Two new medical centres benefit from Charity funding.....	6
Our Grants.....	8
What our supporters have achieved.....	12
Gifts in Wills .....	16
Financial Review .....	18
Trustee arrangements .....	21
Our staff and advisors .....	22
Risk Management .....	23
Related parties.....	24
Fundraising Compliance Report.....	24
Equality, Diversity & Inclusion .....	25
Statement of the Corporate Trustee's responsibilities in respect of the Corporate Trustee's annual report and the financial statements.....	26
Independent Auditor's Report to the Corporate Trustee of Norfolk and Norwich Hospitals Charity.....	27
How to contact us .....	31
Statement of Financial Activities .....	32
Balance Sheet.....	33
Statement of Cash Flows.....	33
Notes to the accounts .....	35
1. Accounting Policies.....	35
2. Related party transactions .....	38
3. Income from donations and legacies.....	38
4. Income from investments .....	38
5. Analysis of other income .....	39
6. Role of volunteers .....	39
7. Analysis of charitable expenditure.....	39
8. Analysis of support costs and governance costs .....	40
9. Analysis of expenditure on raising funds.....	40
10. Trustee remuneration, benefits, and expenses.....	40
11. Analysis of staff costs .....	41
12. Auditor's remuneration .....	41
13. Non-Current assets.....	41
14. Fixed asset investments .....	42
15. Stock.....	42
16. Analysis of current debtors.....	42
17. Analysis of cash and cash equivalents .....	42
18. Analysis of liabilities .....	43
19. Analysis of funds.....	43
20. Grant commitments.....	47

# Annual Report 2024/25

## 2024/25 - Our year at a glance:

### Our Vision: *Supporting our hospitals to provide the best care for every patient*

Our Charity's Mission is to provide resources, over and above what the NHS must and should fund. Improving healthcare for present and future patients of the Trust, by funding innovation and research; development and wellbeing support for Trust staff; additional medical equipment; improvements to the hospital environment and the provision of resources to support patients.

In 2024/25 we met our four strategic objectives as follows:

#### Supporting the care of NHS patients

through support for a high quality and well-equipped hospital environment, enhancing the wellbeing of our Trust's NHS patients

**£725k** spent on life saving equipment and new technology

**£424k** used to improve the hospital experience and environment for patients

**2** new major healthcare centres opened, supported by £3.6m Charity grants

**126** new grants approved to support better care for NHS patients, totalling £1.2m

**1461** complementary therapy treatments for cancer & palliative care patients & staff

#### Supporting the development & wellbeing of Trust staff

helping Trust staff to be the best they can be, enabling them to provide the best possible care for NHS patients

**£126k** spent on wellbeing initiatives for Trust staff

**£238k** spent on additional training and development opportunities

**1547** staff members received approval for grant funding for additional training

**2552** meals funded for hospital staff working on Christmas Day and New Year's Day 2024

#### Enabling research for patient benefit

helping create an environment and culture for research, innovation and improvement that engages and empowers individuals and teams to develop solutions and to share learning

**£65k** spent on research projects during the year

**£154k** new grant approvals to support research to benefit NHS patients

**£500k** target for annual research funding by the N&N Hospitals Charity

**25/26** target expected to be met

#### Maximising our contribution & impact

growing as a local charity of choice that is sustainable, innovative, well governed, provides value for money and works in partnership with others to maximise its contribution

**3rd** Charity Café opened, to generate increased & sustainable income

**£30k** support for a Green Competition, providing resources for sustainability improvements

**464** new funding grants, ranging from £8 to £185,000 with an average £3.3k value

**836** new donor records created on our new CRM



# Annual Report 2024/25

## Our year at a glance. In 2024/25 we:



raised a total of £2.1m, thanks to our generous supporters



spent a total of £2.0m to benefit patients



awarded 464 new grants totalling £1.7m



approved £0.2m for extra training for over 1540 Trust staff members



received £0.8m from gifts in wills



attended the opening of the new Orthopaedic Centre, supported by our £2m grant



launched our ambitious £3.2m Surgical Robot appeal



enabled better care at the new Community Diagnostic Centre with our £1.6m grant



celebrated 170 years of the Jenny Lind Children's Hospital



expanded Complementary Therapies to palliative care patients



showcased our work at the Royal Norfolk Show for the first time



opened our third Charity Cafe at the new Diagnostic Centre

Our support for our local hospitals is only possible thanks to our incredibly generous supporters. To everyone who has helped us, we say a huge 'THANK YOU' – from the Charity and from our NHS Trust.



# Annual Report 2024/25

## Foreword from the Corporate Trustee

As Chair of the Charity Committee, I am delighted to introduce this year's Annual Report and Accounts for the Norfolk and Norwich Hospitals Charity.

2024/25 has been a year of real progress and impact. Thanks to the generosity of our supporters, we have been able to fund hundreds of grants - large and small - that have made a meaningful difference to patients, families, and NHS staff across our hospitals. From specialist equipment and research projects to volunteer support and improvements to the hospital environment, every donation has helped us go further than NHS funding alone can reach.

It has been especially rewarding to see the opening of the new Orthopaedic Centre and Community Diagnostic Centre, both supported by major Charity grants. These facilities are already improving care and reducing waiting times for thousands of people in our region. We have also launched our ambitious Surgical Robot Appeal, expanded complementary therapies for palliative care patients, and celebrated 170 years of the Jenny Lind Children's Hospital.

Behind every achievement is a story of kindness - from legacy gifts and community fundraising to the tireless work of our volunteers and staff. I am constantly inspired by the passion and commitment of everyone involved in our Charity, and I want to say a heartfelt thank you to each and every one of you.

We know there is more to do. The Charity has set ambitious goals for the year ahead, and we are excited to continue working with our NHS colleagues and supporters to deliver even better care for our local community.

Thank you for being part of this journey.



**Joanna Hannam**

Chair, Charity Committee

Norfolk and Norwich University Hospitals NHS Foundation Trust



# Annual Report 2024/25

## About the N&N Hospitals Charity

The Norfolk and Norwich Hospitals Charity (referred to in this report as “the Charity”) is registered with the Charity Commission (registration number 1048170). Thanks to donations, legacies and through generated income, the Charity provides support for additional equipment and projects above and beyond what is available through normal NHS funding. In this way we make a real difference for patients, families and staff and support the Trust to achieve its vision of providing every patient with the best care.

The Charity is overseen and managed by the Norfolk & Norwich University Hospitals NHS Foundation Trust as Corporate Trustee, acting through the Trust’s Board of Directors. The Board has been explicit in stating that the N&N Hospitals Charity is the principal charity associated with the Trust and the Charity is promoted and supported as such.

### Our mission

The Objects of the N&N Hospitals Charity require that it should act to benefit NHS patients. These Objects are reflected in the Charity’s Strategy - *Supporting Better Care* - in accordance with which the Charity funds services and facilities that are additional, more accessible, or more readily available than those that can be offered by the NHS alone.

Grants are awarded by the Charity in accordance with charity law, and with regard to the Charity Commission’s guidance on public benefit. In spending our funds, we endeavour to reflect the wishes of patients and staff by directing expenditure towards those areas they tell us are most in need and focussed on our strategic objectives:

- Supporting the care of NHS patients
- Supporting the development & wellbeing of Trust staff
- Enabling Research – for patient benefit
- Maximising our contribution and impact

The Charity’s Strategy details the Charity’s direction and how we intend it to develop and grow, to ensure that it is impactful, sustainable, innovative, efficient and well-governed – all to the benefit of patients, now and into the future.

### Our hospitals

The **Norfolk & Norwich University Hospital** (NNUH) is a 1200 bed teaching hospital offering a range of specialist and tertiary services and state-of-the-art facilities. It works closely with the University of East Anglia to train health professionals and undertake clinical research. Based on the Norwich Research Park, the NNUH works closely with its partners in the Norwich Medical School and Quadram Institute Partners. Facilities at NNUH have expanded, with Charity support, through creation of the Norfolk Centre for Interventional Radiology, Norfolk & Norwich Orthopaedic Centre and a new Community Diagnostic Centre.

The **Jenny Lind Children’s Hospital** (JLCH) is located on the site of the Norfolk & Norwich University Hospital, providing services for children and young people. First established in 1854, the Jenny Lind is one of the longest established children’s hospitals in the country. Its creation was funded by the proceeds of fundraising concerts held in Norwich by the international soprano Jenny Lind. 2024 saw the 170<sup>th</sup> anniversary of the JLCH, and the opening of a new £6.5m operating theatre complex, with artwork funded by the Charity.

The **Cromer and District Hospital** serves the population of North Norfolk and beyond, with many services provided in Cromer by Norwich-based clinical teams. The Hospital provides a Minor Injuries Unit and a wide range of outpatient and day-case services, including surgery and chemotherapy. The Hospital was rebuilt in 2012 using charitable funds including extremely generous legacy donations. A new Cancer Centre was opened in 2021 partially funded by a £1.8m grant from the N&N Hospitals Charity, and a new Charity Café was opened in 2022.



# Annual Report 2024/25

## Two new medical centres benefit from Charity funding

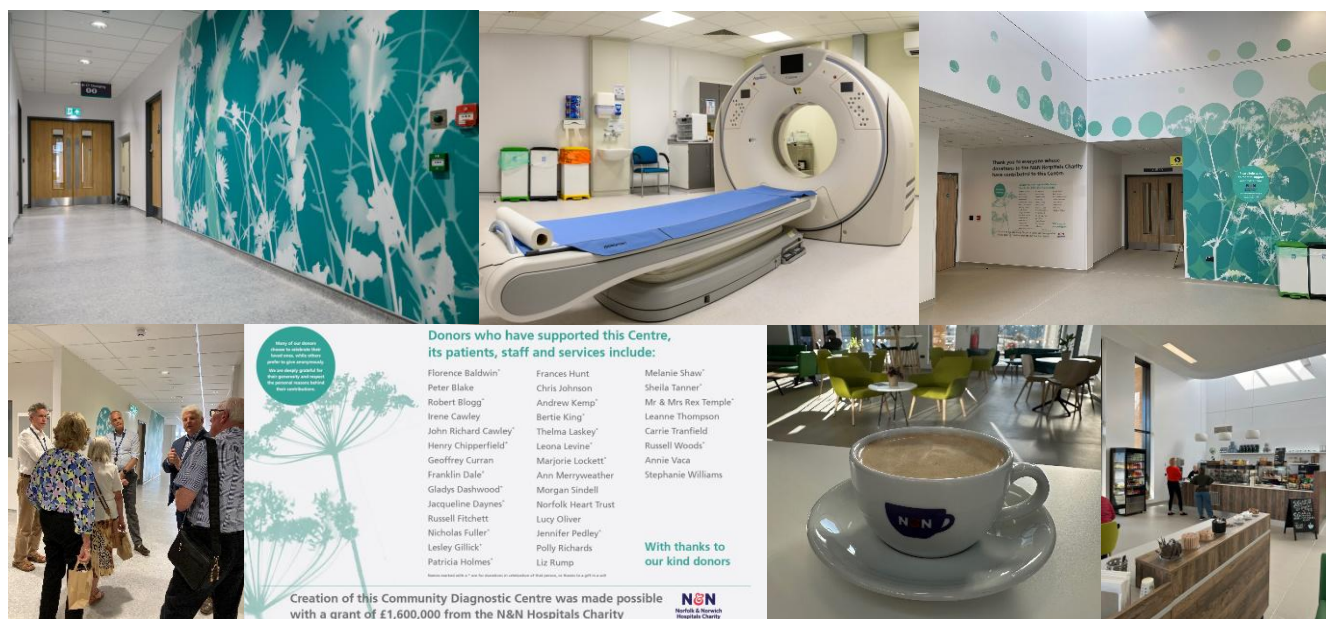
### The Norfolk & Norwich Orthopaedic Centre (NaNOC) - £2m grant

In 2021/22 the Charity approved £2m funding to support a new Orthopaedic centre, with two elective theatres and associated ward space. Funding was used to purchase the equipment for the new theatres, plus artworks to enhance the environment for patients. The Centre opened in September 2024 and will ensure that emergency surgery does not affect planned operations, maintaining the ongoing treatment for NHS patients on waiting lists.



### The Community Diagnostic Centre (CDC) - £1.6m grant

In 2022/23 the Charity awarded a grant of £1.6m for the purchase of a dedicated cardiac MRI scanner and two additional CT scanners for the new Community Diagnostic Centre to be built on the Norwich Research Park. The Centre opened in February 2025, and we have been very pleased to receive reports that it has improved waiting times for local patients, with diagnosis times expected to be sped up for approximately 150,000 each year.



# Annual Report 2024/25

## Key Priorities

The 4 key priorities of the Charity have been set out in its Strategy *Supporting Better Care* (2023-27):

- Supporting the care of NHS patients
- Supporting the development & wellbeing of Trust staff
- Enabling Research – for patient benefit
- Maximising our contribution and impact

These Strategic Priorities are reflected in our Budget & Annual Plan for 2025/26 with projects and priorities that include:

- completing our support for the new Community Diagnostic Centre at NNUH, to include funding specialist scanners worth £1.6m – particularly for cancer and cardiac patients;
- working with other organisational partners to enhance the impact of our funding for research, for example through the Quadram Institute Partners research ‘seed-corn’ programme and application to the national funding competitions (eg through UK Research & Innovation);
- continuing our support for staff development through educational courses, prizes and advanced training;
- finalising arrangements for the Charity to fund creation of an Institute for Robot-Assisted Surgery at NNUH, to include purchase of two additional robotic systems bringing the total to four, benefiting patients through specialist surgery with reduced complications and faster recover times;
- further developing our diversified income streams, through Charity cafes providing an improved range of facilities for staff, patients and visitors;
- maturing the infrastructure and effectiveness of the Charity, through implementation of our new website and donor database system, increased donation points and improved use of varied communication channels;
- celebrating our donors and supporters through donor recognition installations and events.

### Ongoing fundraising appeals:

The Charity provides support to departments and services across the Trust and all its sites. We have a number of ongoing and planned appeals and campaigns, to raise funds to assist the Trust with further enhancements and to support better care including:

- **Cancer:** to continue the Charity’s support for robot-assisted surgery. The majority of patients treated with the assistance of surgical robots are on ‘cancer clinical pathways’ and the Charity is raising funds to enable the purchase of 2 additional robot systems benefiting patients through shorter operating times, faster recovery and reduced complications;
- **Jenny Lind Children’s Hospital:** to fund additional overnight accommodation for families of children in our Children’s Hospital and on our Neonatal Intensive Care Unit;
- **North Norfolk:** to continue our support for new and innovative services at Cromer & District Hospital – such as a nurse-led heart failure clinic and specialist equipment for North Norfolk community midwives;
- **Neurosciences:** to support our Stroke & Neurosciences team, in preparation for introduction of a stroke thrombectomy service at NNUH
- **Specialist clinical services:** to purchase a specialist imaging system for use by our Spinal Team utilising low dose radiation to capture improved images of patients with scoliosis with reduced risks
- **Research:** increasing our impact through clinical research to benefit patients, particularly through funding additional clinical academic posts.

If you would like to help us do more to support even better care at our local hospitals, by raising funds for the Norfolk and Norwich Hospitals Charity, then please visit [nnhospitalscharity.org.uk](https://nnhospitalscharity.org.uk) or contact our team at [charity@nnuh.nhs.uk](mailto:charity@nnuh.nhs.uk), or on **01603 287107**.



# Annual Report 2024/25

## Our Grants

This year our charitable expenditure of £1.6m has supported many projects designed to benefit patients. The following pages highlight some of the projects we have funded. There are examples of the various ways in which charitable grants have already improved care for patients through funding improved hospital environments, new and better equipment, and by supporting research and staff development. Some of our grants are for millions of pounds, whereas others are for much smaller sums – **donations of all sizes can make a real and lasting difference:**

### Enhancing patient care through volunteering



£87,000



Supporting the care of NHS patients



2023-2025



Thanks to a generous £87,000 grant, the Charity has been able to support volunteering at our NHS hospitals. The grant has funded an Inpatient Volunteer Project Coordinator role for two years, held by Louise Willimott.

Louise oversees the recruitment and placement of inpatient volunteers, and currently manages over 100 volunteers, contributing 6,500+ hours annually to enhance patient care across our hospitals. Her work has strengthened ward relationships and developed tailored volunteer roles that directly support patient wellbeing and align with Trust priorities.

Key volunteer contributions include:

- **Inpatient Support:** Assisting with admin, ward tasks, and patient companionship to prevent hospital deconditioning.
- **Dementia Support:** Engaging patients in meaningful activities and supporting families.
- **Mealtime Assistance:** Promoting nutrition and hydration through practical mealtime help.
- **Pets as Therapy:** Providing emotional uplift through visits from therapy dogs.
- **Therapeutic Care:** Delivering calming hand massages to aid relaxation and mood, after training from the Charity's Complementary Therapy Team.

Louise said:

***“Without the Charity’s funding these vital roles—and the holistic benefits they bring to patients and staff—would not be possible.”***

In addition to this funding, the Charity has provided two vehicles for the Volunteer Driver Scheme for the last six years, as well as funding a Volunteer Driver Coordinator for the first three years of the scheme.

Future support will include a grant to provide two replacement vehicles for a further three years, an extension of funding for Louise’s role for a third year and the aim of providing one or two electric buggies to help patients get from the main Norfolk & Norwich Hospital site to the new Community Diagnostic Centre, which can be difficult for patients with mobility problems.

# Annual Report 2024/25

## Supporting better heart health at Cromer Hospital



£207,000



Supporting the care of NHS patients



2024/25



Cardiac care available in North Norfolk has been enhanced thanks to the opening of a new heart failure clinic at Cromer & District Hospital. This has been made possible with a £207k grant from donations and gifts in wills.

Most of the funding has been used to fund the staff needed to run the clinic for two years, but £99,995 was used to purchase an Echocardiogram machine. Commonly known as an “Echo”, an Echocardiogram is a type of scan that uses high-frequency sound waves to produce real-time, moving images of the heart.

These sound waves are sent into the chest using a handheld probe, as they bounce off the heart’s structures they’re picked up by the probe and translated onto a screen. The resulting images allow healthcare professionals to closely observe how the heart is functioning.

This type of scan is an essential diagnostic tool for identifying a wide range of heart conditions, including congenital heart disease, heart failure, and damage caused by heart attacks.

Having an Echo machine at Cromer Hospital means that patients in North Norfolk no longer need to travel to the Cardiology Department at the Norfolk and Norwich University Hospital for this crucial scan. For many individuals living with heart failure, making that journey can be physically challenging and stressful. Having this service available locally brings convenience and peace of mind to patients and their families.

The consulting cardiologist can view the scan in real time as it is being performed, often allowing them to discuss the results with the patient during the same appointment. This not only reduces delays in diagnosis and treatment planning but also enhances the overall patient experience.

Lucie Legg, Heart Failure Specialist Lead Nurse tells us that by July 2025 the heart failure clinic at Cromer Hospital will have seen 100 patients, and lots of those patients have commented on how wonderful it has been to be seen near to where they live, rather than having to travel to Norwich for treatment.

Lucie said:

*“Thank you so much for all the help you have given me to get this up and running. Let’s hope we can keep it going.”*



### Did you know....

**that individual legacies can fund specialist training for nurses to allow them to develop and improve healthcare in your local hospitals?**



## Annual Report 2024/25

### New equipment for emergency training



£160



Supporting the development & wellbeing of Trust staff



2024

To help our Jenny Lind Children's Hospital staff stay confident and skilled in emergency care, we purchased a special training device called the **EZ-IO drill**. This tool is used to practice a technique called **intraosseous access**, which means delivering medicine or fluids directly into the bone when veins are hard to find—especially in life-threatening situations.

This process is like using the inside of a bone as a shortcut to the bloodstream, with bone marrow being full of blood vessels, so fluids and medications can be delivered quickly and effectively – just like through a vein. It is fast, reliable, and often used when every second counts.



**Amber Cossey**, Paediatric Practice Development Nurse, explained:

*“Following these training sessions staff reported feeling more confident in using the EZ-IO drill which would lead to better patient outcomes during an emergency. We also use the equipment during emergency paediatric simulations to simulate real-time emergency situations, and obtaining quick vascular access is an incredibly important part of immediate emergency care.”*

### Special pram helps NICU babies and their families



£1,115



Supporting the care of NHS patients



2024



Thanks to fundraising support from Norwich City footballers last year, we were able to purchase a special pushchair designed to accommodate neonatal babies that need to travel with an oxygen canister.

Paula Mellor, NICU Matron said:

*“This pram will enable our babies who are dependent on oxygen therapy to be able to leave the Neonatal unit for walks with their families.*

*Being able to go outside makes a significant difference to them and their families with something as simple as a walk.*

***This is key to parental wellbeing and is greatly appreciated by the families.”***

# Annual Report 2024/25

## Research projects to benefit Norfolk Patients



£90,000



Enabling Research for patient benefit



2024/25

We were very pleased to support Dr Martyn Patel's application for a £90,000 grant to fund PhD research projects for two postgraduate researchers for three years, with a focus on the North Norfolk community. Dr Patel and Professor Anne-Marie Minihane, Professor of Nutrigenomics at Norwich Medical School UEA, are co-supervising both projects, which started in early 2025.



### **Project 1 – Understanding how Assistive Technology and Virtual Wards can assist in Eating Behaviour Support in the North Norfolk Coastal Population**

Rose Kay is conducting research in virtual wards and how they might be used to deploy eating behaviour interventions.

The virtual ward is a service offered by the Norfolk & Norwich University Hospital, with patients receiving hospital level care in their own homes using remote monitoring technology. They can be used as a part of a phased discharge, or as a way to begin treatment before a patient needs admission to hospital.

Malnutrition can be a major factor in health outcomes. Managing malnutrition while a patient is on the virtual ward could help to improve their health before a hospital visit is necessary. The research will also target the issue of healthcare inequality across North Norfolk, where the element of the population that are older and might otherwise have difficulty accessing hospital services can engage the virtual ward from their homes.

Rose said:

**“I am very grateful to be funded by the N&N Hospitals Charity. Their support and funding has given me the opportunity to not only pursue research, but research that aims to make a real difference to people's lives. It is a privilege to be able help the community of Norfolk while following my passion!”**

### **Project 2 - Using Pharmacogenomics to improve Health Outcomes in North Norfolk**

Pharmacogenomics is the study of how a person's genes affect their response to medications. Dr Rebecca Moore's research looks at how pharmacogenomic testing can be integrated into NHS primary care in Norfolk, with a focus on the North Norfolk coast.

Adverse reactions to drugs can cause severe health complications, and not all people respond to drugs in the same way. An understanding of a person's genetic makeup, combined with a map of established variations in genetics and associated drug responses, could help inform both safer and more effective prescribing decisions.

Rebecca said:

***“Thank you to everyone who supports the N&N Hospitals Charity, which has provided me the opportunity to carry out research into how we can integrate pharmacogenomic testing into communities within Norfolk and personalise our use of medications. With your support I'm hopeful we can improve the benefits from medications and reduce side effects and unwanted hospital admissions”***





# Annual Report 2024/25

## What our supporters have achieved

The support for our Charity continues to grow with patients, friends, family, staff, and the local community making donations, leaving gifts in wills, organising and taking part in events. Here are just some of the highlights of the year but we know there are many more unsung heroes, and we thank you all for your support.

### Inspirational fundraiser completes new challenge

Our Charity Champion Inspiration Award winner 2023, who raised £10,000 for the cancer team that cared for her parents has raised another £10,000 after completing an epic challenge. Louisa Dye from Sprowston spent five days covering thousands of steps along sections of the Great Wall of China. Louisa was raising money for cancer care at Norfolk and Norwich University Hospital in memory of her mum and dad, Stuart and Christine Clarke, who both died with cancer.

The trek followed her earlier 500-miles-in-a-month challenge, which even inspired a message of support from Scottish band The Proclaimers, behind the hit song 'I'm Gonna Be (500 miles)'.

Louise said of the inspiration behind her efforts:

*"Since losing mum, I have struggled greatly with grief. Losing one parent is hard – losing two is heartbreaking. This is where the challenges have come from.*

***I never knew I had this in me, but I now have the inner urge and adventure to do anything I can to help raise money for the oncology department."***

"The China trek comprised flat areas, rugged areas and some with a sheer drop either side as well as 1,000 steps up to the Mutianyu wall to the Heavenly Ladder, which is a 45-degree climb, and you have to climb with your hands and feet."

Everyone at the N&N Hospitals Charity is so grateful to Louisa for her support and she continues to be an inspiration to us all.



**To find out how you can help us do more at your local hospitals, please visit  
[nnhospitalscharity.org.uk](https://nnhospitalscharity.org.uk)**

# Annual Report 2024/25

## Charity Champions 2024

In October 2024, N&N Hospitals Charity celebrated the achievements of its supporters by presenting our annual Charity Champions Awards. These are the winning entries from the many wonderful people and organisations who help our Charity to support even better care at our NHS hospitals.

### Inspiration Award

**The Bush Family:** When Alex Bush and his brother completed a 50-mile sponsored walk as a way of saying thank you for a family member's treatment for kidney problems, he had no idea what it would lead to. Now the Bush family and friends have raised more than £14,000 with a variety of challenges, each time choosing a unit cause with personal significance - from oncology and the Boudicca Appeal to Brundall Ward.

"Part of the fun is getting people involved by joining in or sponsoring or helping to raise awareness," said Alex, with the main core of himself, brothers Tim and Peregrine and sons Jacob and Joseph Bush supported by wider family and friends. "We have had a few family tragedies and for everyone I think it has helped them get through it."



***It just feels like a kind of therapy to do something that will have positive impact."***

### Lifetime Supporters' Award



#### Julia Fisher and Emma Manning – Emma's Group:

Mother and daughter team Julia and Emma feel that if they can help, they should help. Julia has raised money for charity for as long as she can remember, and daughter Emma has always been involved. "I just think that it might help other people, and we are very lucky, people do support what we do," said Julia.

Known as Emma's Group, the pair put their own health struggles with cancer and arthritis aside as much as possible to concentrate on their plant, cake, craft and gift sales, raising thousands of pounds for the charity. "I

think you have to do what you can when you can," said Julia, adding that they loved feeling they were making a difference for other patients.

Emma's Group plan to continue to host charity stalls for many years to come. Emma said:

***"It is nice to do something for someone else"***



# Annual Report 2024/25

## Young Fundraisers' Award

**Norwich High School for Girls:** The fun of working together plus plenty of creativity and hard work saw the busy students fundraising for a year. Through various activities—including busking at the Forum, a Carol Service collection, Norwich High Prep's Got Talent event and Charities Day — they raised a total of £1,837.68. The girls enjoyed it too: “The thing I enjoy most about the fundraising is the events - the whole school comes together and all the year groups work as a team,” said Aina.



They were delighted to be selected as winners. Phoebe said:

*“It's amazing to win this award as we know we are really helping people.”*

## Community Award



**Brundall Cancer Community Chest:** A dedicated team of villagers and supporters runs the Cancer Community Chest in Brundall, a friendly recycling centre with donations ranging from baby clothes, books, shoes and DVDs to toys, linens, wool and crockery.

More than 30 hard working volunteers help receive, sort and sell donated items and support the many visitors who often pop in to chat and enjoy the Chest's positive atmosphere.

The team has most recently donated £30,000 to our Boudicca Breast Cancer Appeal to fund vouchers for

post-operative bras, and an additional £10,000 for one of the new counselling rooms for the Boudicca Breast Unit.

The N&N Hospitals Charity Team are incredibly grateful for the support of this wonderful group, which has made it possible to provide additional support for patients with breast cancer.



## Did you know....

that a gift in your will could fund additional medical equipment, enabling more patients to be diagnosed or treated, and that this could directly help reduce waiting times?



## Annual Report 2024/25

### Corporate Award

**Sponge:** Norfolk bakery business Sponge has donated thousands of slices of cake for patients and staff over the past five years and plans to keep up the tasty work.

“Winning this award is a huge honour for us. It’s a testament to the hard work, passion and creativity we pour into every cake we make.” said Head of Sponge, Richard Fowler.

“The Norfolk and Norwich Hospitals Charity plays a crucial role in providing exceptional care and essential services to local patients and their families and supporting them allows us to contribute to the well-being of our community and show our appreciation for the dedication of healthcare professionals. It’s a cause that resonates with our team, as many of us have experienced first-hand the incredible impact the hospital has had on our own lives and those around us.”



*“We believe in giving back to the community that supports us,”*

### Staff Award



**Azad Mathur:** Children’s surgeon Azad Mathur, known as AB, ran the London Landmarks Half Marathon in aid of the Jenny Lind Children’s Hospital and raised five times his expected fundraising total. Not a long-distance athlete before starting his training, he loved the event – and has kept up the running.

“I thought why not do this challenge to help keep fit, and this unit [children’s] has given me a lot so I wanted to do something back.” He continues to run 5k a couple of times a week. “It has helped me,” he added.

*“I love working here and if I am fit, I can do more.”*

# THANK YOU

**for all the support you have given to us  
and to our Trust’s NHS staff**

# Annual Report 2024/25

## Gifts in Wills

Legacy gifts can have a huge impact, funding the latest medical equipment, providing staff development opportunities, creating welcoming environments and funding pioneering research.

Legacies received in 2024-25 ranged from £1,000 to £400,000 and have enabled us to provide funding where it is needed most. Some were cash gifts while others were a portion of the remaining estate, after family and friends had been taken care of.

Almost 1-in-2 of our grants are only possible thanks to gifts in wills, and we are so thankful to everyone who leaves us a legacy.

Gifts in wills have made it possible for us to fund some large projects over the last couple of years, including our £2m grant for the new Norfolk & Norwich Orthopaedic Centre, and our £1.6m grant for additional scanners for the new Community Diagnostic Centre. Those gifts ranged from a few hundred pounds to a few hundred thousand pounds each, but they all made it possible for us to improve healthcare for our local community, and we are incredibly grateful for the opportunities they have given us.

**Every gift, large or small, makes a real, lasting difference for local patients.**

Legacy gifts during 2024/25 were received from:

Eric Arber	Anne Godfrey-Le Gassick	Anne Love	Rex Temple
Clifford Bardwell	David Goodall	Nora Orna	Eileen Tilbury
Helen Bond	Julie Hames	Patricia Parker	Gladys Trench
Trevor Boore	Patrick Hawkins	Carol Payne	Reginald Trevatt
Edward Bullimore	Gillian Harvey	Margaret Rogers	Josephine Watling
Olive Dade	David Hudson	Gill Rose	Elizabeth Wolfe
Joan Daniels	Vera Ive	Thomas Rowan	
Michael Dixon	Judith Jones	David Staff	

We are deeply grateful for every legacy gift we receive, and we are committed to ensuring each one creates a lasting impact for NHS patients. Sometimes this means waiting for the right large-scale project to be developed by our NHS Trust—such as the new Community Diagnostic Centre or the Norfolk & Norwich Orthopaedic Centre, both of which have been years in the making. At other times, a legacy can be put to work more quickly, like the generous gift from Carol Payne, which is already helping to advance vital research.

**Every legacy is more than a donation - it is a lasting commitment to better health for all**

# Annual Report 2024/25

## Carol Payne Memorial Scholarship



Carol was born in 1955 in Cranford, Northamptonshire and attended Kettering High School, where her aptitude for sport and science led her to the Physiotherapy Department at the West Middlesex Hospital.

Carol adored helping patients, and her strong ambition and steely determination set the high standards by which she was to conduct her professional life.

She first joined University College London Hospital and spent the next 44 years in dedicated clinical practice and advanced research at the Norfolk & Norwich University Hospital.

Carol found talents far beyond treating patients, fiercely advocating for advances in physiotherapy. As a leader she was a deeply insightful and practiced person-centred mentoring, striving for excellence, and supporting aspirations. She understood the psychology of physiotherapy, and this underpinned her holistic approach, with fulsome patient testimonials clearly demonstrating her personalised approach to their care.

Carol was instrumental in making the NNUH physiotherapy department 'research ready', selflessly supporting allied health professionals (AHPs) pursuing research locally, regionally and nationally. She was a Research Champion, presenting at conferences, providing academic reviews and lecturing at the UEA's School of Health Sciences. Her research took her to Japan and the US.

Carol won many accolades and was a Fellow of the Chartered Society of Physiotherapy. She was presented with a Trust Lifetime Award in 2022, recognising her decades-long career. Carol was a much-loved and respected member of the NNUH Team and is much missed since she died unexpectedly of heart failure on 24 January 2024 at NNUH.

Her life's work has been celebrated through a legacy gift, match-funded by our Charity, to support a memorial research scholarship in her name. The applications and selection process will take place in 2025/26 and will be reported on in our annual report next year.

We are very grateful to Carol's family for enabling this celebration of her life and work. Thank you.

## Writing your will

The Charity has been a member of Remember a Charity for the last three years and has partnered with expert estate planners, Octopus Legacy, so you can write or update a simple will for free, with discounts applicable for wills with Trusts. To find out more, please visit [will.octopuslegacy.com/NNHC](https://will.octopuslegacy.com/NNHC)

Alternatively, The Co-operative Legal Services offer a 20% discount through a partnership with Remember a Charity. To access their services please visit <https://www.co-oplegalservices.co.uk/partners/remember-a-charity-referrals/> or call 0330 606 9578 and quote RACWILLS01

For more information about leaving a legacy to your local hospitals, after taking care of your family, please contact [legacy@nnuh.nhs.uk](mailto:legacy@nnuh.nhs.uk)



# Annual Report 2024/25

## Financial Review

The following key figures are taken from the 2024/25 Accounts, which carry an unqualified audit report:

### Funds received in the year (£2.1m)

#### Donations received (£819k)

The Charity received donated income totalling £819k (£1,396k in the previous year).

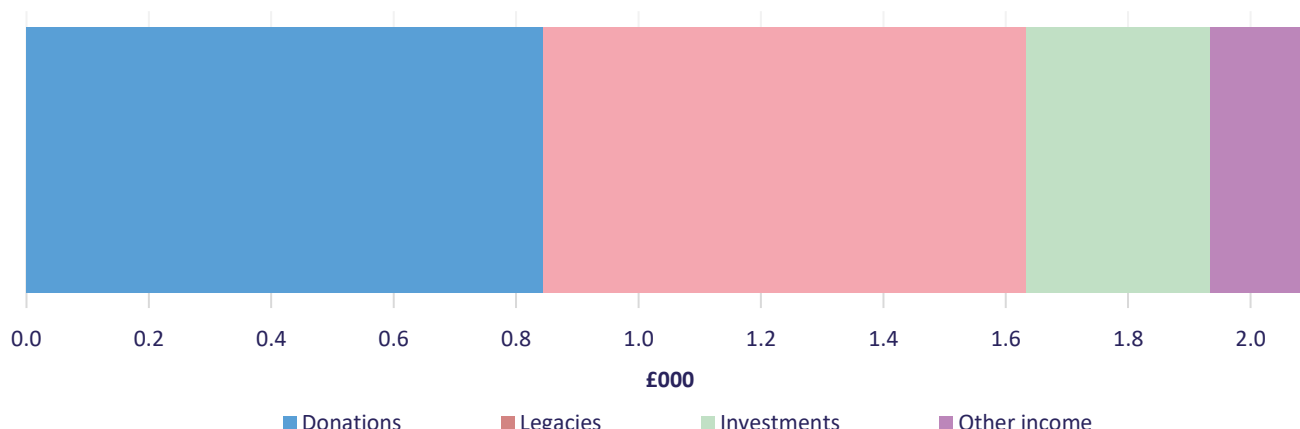
This includes £211k received in grant funding, with £157k received from the Norfolk Heart Trust, £10k from the Elise Pilkington Trust, £5k Giving Days Grant and £5k from the John and Pamela Salter Charitable Trust.

Donations from local community members and businesses totalled £608k.

#### Legacy gifts (£805k)

A gift in a will enables our Charity to invest in healthcare improvements at our local hospitals, benefitting future NHS patients for years to come. We are extremely fortunate to be supported in this way by so many people each year.

Income from legacies is expected to vary from year to year but it continues to make an important contribution to the Charity with £805k received in 2024/25 (£1,483k in 2023/24).



#### Investment income (£301k)

Through application of a formal Investment Policy, this year the Charity used its funds to generate a further £301k of investment income (£242k in 2023/24). This was achieved in the form of dividends and bank interest. The Investment Policy and performance are regularly monitored by the Corporate Trustee through its Charity Committee.

#### Other income (Total £163k)

Fundraising events and activities generated £21k during 2024/25 and the Charity continued its programme of regular raffles, increasing income from lotteries and raffles to £20k (£16k in 2023/24).

Trading income increased to £47k (£37k in 2023/24), following successful upgrades to the Charity's catering facilities, including a covered seating area at the N&N café.

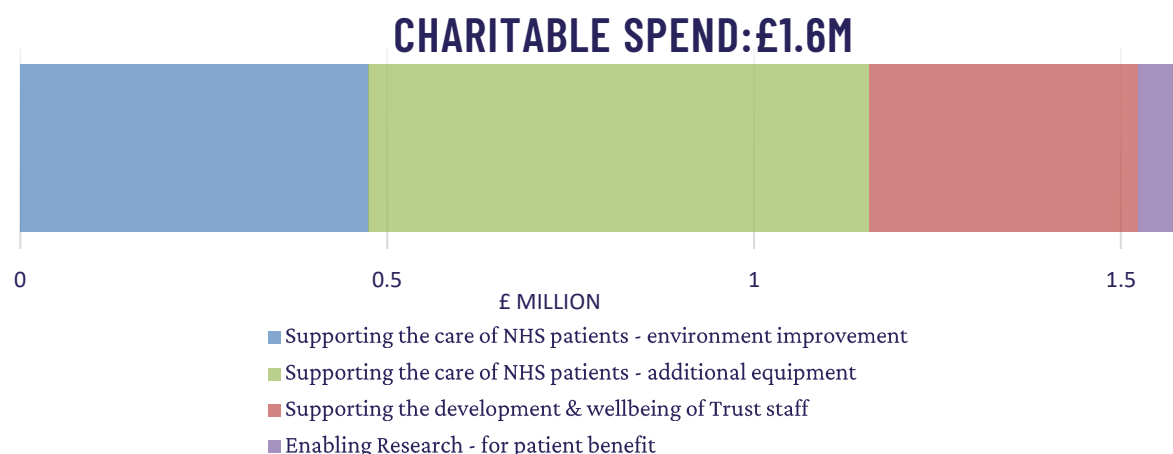
Income from course fees and sponsorship of study days was £75k (2023/24: £127k)

# Annual Report 2024/25

## Money spent in the year (£2.0m)

### Expenditure on Charitable Activities (£1.6m)

The expenditure for the year on charitable activities was £1.6m (£2.8m in the previous year). The breakdown of expenditure on the Charity's four key areas of focus in 2024/25 is shown below:



Examples of expenditure and funding committed for expenditure include:

- £271k for a Spinal C-Arm to improve imaging available for spinal surgery;
- £100k to extend Complementary Therapy services for Palliative Care and Cancer patients;
- £60k to fund the Norfolk Arthritis Register for three years;
- £107k to create new specialist nurse-led Heart Failure Clinics at Cromer Hospital for two years;
- £41k to purchase a whole-body phantom to aid in optimisation of major radiotherapy equipment;
- £15k to fund upgrades to the McKee House bathrooms for NICU parents;
- £10k to fund specialist furniture for the Emergency Department's Mental Health Room;
- £98k to create a dedicated space for Community Midwives at Cromer Hospital.

### Expenditure on Raising Funds (£404k)

Expenditure on raising funds includes the cost of fundraising staff as well as promotional material, the purchase of leaflets, donation boxes and envelopes. The Charity's aim is to keep fundraising costs as low as possible whilst appropriately promoting the Charity and its work. In this way our supporters can be confident that the maximum possible portion of their donation is being spent on charitable activities. For 2024/25 expenditure on raising funds equated to 20p for each £1 spent, compared to 80p on charitable activities. The amount spent on fundraising has risen over the last year, due to the planned growth of the Charity Team, and the continued implementation of our strategy which was approved in 2022/23. Our intention is to keep it as low as possible, maximising the funds available for supporting better care for patients. (2023/24: £247k)

# Annual Report 2024/25

## Fund balance (£10.1m) and reserves

The Corporate Trustee has set a minimum reserve level of £0.3m in unrestricted funds, to mitigate fluctuations in the value of investments, and to allow for six months running costs for the Charity.

At 31 March 2025, the total funds of the Charity amounted to £10.1m (£10.4m at the end of 2023/24). Of these:

- £0.05m was held in restricted funds including for use in the Jenny Lind Children's Hospital and to support an educational prize;
- £9.7m was held in unrestricted (designated) funds where money has been donated for particular purposes, but no binding trust has been created. We aim to follow donors' wishes on the focus of expenditure when it is practicable to do so. £1.2m has been committed for expenditure from these funds;
- £0.4m in unrestricted general funds. (£0.9m in 2023/24). £0.2m has been committed for expenditure from these funds.

The Charity Team works with individual fund advisers to plan expenditure of funds. In addition, the Charity has established a series of strategic plans for expenditure of the Charity's funds in the years ahead, aimed at maximising beneficial impact and promoting sustainability of the charity. The timing of major expenditure is under the control of the Corporate Trustee (and Charity Committee under delegated authority).

The total amount of funding agreed for future expenditure from all funds is £1.4m.

The shortfall in the reserve level is as a result of the fall in the value of the investment portfolio and will be topped up by a charge against the designated funds during 2025/26, if required.

## Investment policy and performance

The Charity has a formal Investment Policy and Investment Mandate, approved and overseen by its Charity Committee. The objective of this Policy is to ensure that there is a diversified portfolio of investments (thereby spreading exposure to risk) with an intention to maximise financial return to the Charity within a 'medium risk' investment profile.

At the end of 2024/25, £8.4m of the Charity's funds were invested in the diversified portfolio of investments, managed by Barratt & Cooke stockbrokers regulated by the Financial Conduct Authority (2023/24: £8.7m). In 2024/25, the administration charge for management of the Charity's investments was £1,296 (2023/24: £1,260).

During the year, there was a net loss of £0.4m on investments (£0.4m gain in 2023/24). This was made up of a realised loss of £101k from disposal of investments (gain of £1k in 2023/24), and an unrealised loss of £311k on the investment portfolio held at the year-end (gain of £443k in 2023/24).

The Charity uses professional and regulated investment services to manage its investment portfolio. Investment performance is kept under review by the Charity Team and Charity Committee, and the Investment Manager meets with the Committee on an annual basis to discuss performance and strategy.



# Annual Report 2024/25

## Trustee arrangements

The Norfolk and Norwich University Hospitals NHS Foundation Trust (the Trust) is the sole corporate trustee of the Charity and the Trust's Board of Directors is tasked with exercising all powers and duties of the Trust, including the responsibility of corporate trustee. Membership of the Board of Directors is detailed in the Trust's Annual Report and Accounts and on its website ([www.nnuh.nhs.uk](http://www.nnuh.nhs.uk)).

The Trust Audit Committee and Trust Board have considered whether the Charity accounts should be consolidated with those of the Trust. Whilst the Charity may be considered to be 'under the control' of the Trust Board, it is not considered to be financially material to the Trust and the accounts are therefore not consolidated.

In accordance with the scheme of delegation and standing financial instructions, through 2024/25 the Trust Board delegated responsibility for the day-to-day management of the N&N Hospitals Charity to the Executive Lead for the Charity – John Paul Garside.

The Board has established a Charity Committee with formal Terms of Reference which are reviewed and updated on a regular basis. The purpose of the Committee is to:

- provide assurance oversight of the management of the Charity;
- oversee investment of the Charity's assets;
- assist the Board in meeting its responsibilities as Corporate Trustee;
- support the Corporate Trustee in strategic overview of the Charity.

During 2024/25 the members of the Charity Committee were:

Joanna Hannam	Chair of Committee and Non-Executive Director
Lesley Dwyer	NNUHFT Chief Executive
Julian Foster	Non-Executive Director
John Paul Garside	Company Secretary - Executive Lead for the Charity
Nikki Gray	Non-Executive Director
Simon Hackwell	Director of Strategy & Major Projects
Liz Sanford	Interim Chief Finance Officer
Tom Spink	Non-Executive Director

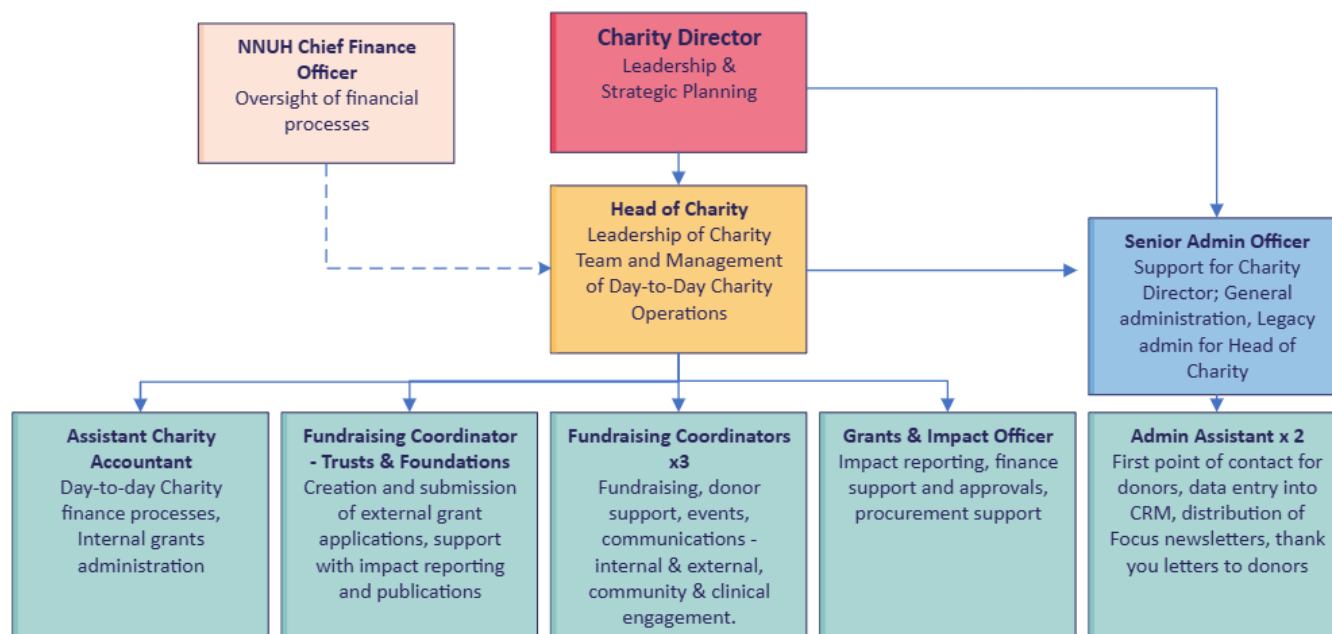
Work undertaken by the Committee during 2024/25 has included:

- establishing the Charity's Annual Plan and Ambitions – to continue implementation of the Charity's Strategy – *Supporting Better Care* (2023-2027) within an agreed budget and ambitions for income generation and expenditure;
- overseeing the 'pipeline' of potential schemes for future Charity support and fundraising;
- supporting initiatives to enhance the profile and recognition of the Charity as the principal charity associated with the Trust, including external signage and donor recognition installations;
- reviewing policies and operating procedures relevant to the Charity, including the Policy for Ethical Fundraising & Donations, Investment Policy and the Standard Operating Procedure for Naming Trust Assets;
- receiving updates on fundraising activities, including development of our Charity-funded cafés, to benefit staff, patients and public and diversify sources of income;
- receiving reports from our impact reporting processes – following-up on grants to monitor that they are delivering the intended benefits;
- review of applications and approval of major grants, in line with the Charity's Objectives and Annual Plan.

# Annual Report 2024/25

## Our staff and advisors

Executive oversight of the Charity was undertaken by John Paul Garside, Company Secretary for the Trust. Management and operation of the Charity was carried out during 2024/25 by:



Plans are in place to continue the growth of the Charity Team, with additional financial management and reporting support to be recruited in 2025/26.

## Professional Advisers

### Investment managers:

Messrs. Barratt & Cooke  
5/6 Opie Street  
Norwich  
NR1 3DW

### Bankers:

Barclays Corporate Services  
PO Box 729  
1 Capability Green  
Luton  
Bedfordshire  
LU1 3US

### External auditors:

Whitings LLP  
Greenwood House  
Greenwood Court  
Skyliner Way  
Bury St Edmunds  
IP32 7GY

# Annual Report 2024/25

## Risk Management

As part of its regular business, the Charity Committee identifies the Annual Plan and Ambitions for the Charity in delivering its Strategy. The Committee receives regular reports on progress and the Annual Plan Tracker highlights key risks to delivery of the Charity's strategic plans and associated mitigating actions:

### A. Financial risks in a crowded marketplace and at a time of economic pressure

*There is a possibility that the Charity will encounter 'fallow ground' for fundraising and communication messaging in a crowded 'market-place' and at a time of national & international economic pressure.*

The Charity, through its Corporate Trustee and Charity Committee has identified the value of demonstrating the effective and impactful expenditure of donated funds. An expanded and targeted expenditure programme, supplemented by enhanced impact reporting, demonstrates the value of giving to the Charity.

The Committee has approved focussed expansion of the Charity's activities, to raise funds and the profile of the Charity, emphasising the benefit to patients from doing so.

### B. Financial risk through reliance on voluntary income and 'at risk' investments

*B.1 With no endowments, the Charity is very heavily reliant on voluntary income which is subject to unpredictable variation.*

Uncertainty over future donations is mitigated by an approved Legacy Strategy, with actions targeted to increase our legacy income stream and a Fundraising and Income Generation Plan. Diversification of income streams has been encouraged through launch of a Charity Lottery, raffles and establishing Charity cafés at Cromer Hospital, the Norfolk & Norwich University Hospital, and in the new Community Diagnostic Centre (CDC) on the Norwich Research Park.

*B.2 Vulnerability through lack of diversification in modes of investment.*

Fluctuation in the value of the Charity's investments in the stock market can lead to swings in the value of the Charity's net assets. This is mitigated by the utilisation of a professional Investment Manager, operating under a 'Medium Risk' investment mandate, and with targets to achieve performance better than industry benchmarks over a 5-year period. Taking this longer-term view, in combination with advance planning of major expenditure, mitigates against detrimental effects of short-term fluctuation in share values.

### C. Strategic challenges and competing operational pressures in NHS complicate Charity fundraising and expenditure

*C.1 Uncertainty over NHS strategy and finances complicates planning and implementation of major projects, with consequences for the Charity with respect to both fundraising and expenditure*

Operational pressures and priorities inevitably demand the attention and focus of NHS staff and functions, and this can limit the scope to develop and implement strategic projects, including those with which the Charity is involved. The position may be complicated further by constraints to NHS capital expenditure. Achieving the Charity's ambitions in both fundraising and expenditure requires identification of adequate and appropriate initiatives in the Trust with which the Charity can be involved. The Committee accordingly receives regular updates on our Pipeline of Potential Grants, to enable advance planning. Regular financial reports enable monitoring with regard to both income and expenditure, and take-up of approved grants.



# Annual Report 2024/25

## Related parties

The Norfolk and Norwich University Hospitals NHS Foundation Trust is the corporate trustee of the N&N Hospitals Charity and is therefore a related party.

### Our relationship with the wider community

The ability of the N&N Hospitals Charity to continue its work is dependent on its ability to maintain donations from the general public. The N&N Hospitals Charity continues to forge strong relationships with members of staff of the hospital without whose co-operation the ability to make an effective contribution would be much diminished.

### Volunteers

The Charity pays tribute to:

- our volunteers for their time, support and commitment;
- the members of staff who give of their time out of hours in support of the work of the N&N Hospitals Charity;
- our fundraisers who do so much to enrich lives through donations and fundraising activities;
- the many external organisations, companies, trusts, and foundations that have supported our work.

## Fundraising Compliance Report

Donors to the Norfolk and Norwich Hospitals Charity can be assured that we comply with the regulatory standards for fundraising. We are registered with the Fundraising Regulator and are committed to the Fundraising Promise and adherence to the Code of Fundraising Practice. This report covers the requirements charities must follow as set out in the Charities Act 2016.

The Charity's fundraising has been carried out mainly by employee fundraisers, or by members of the local community fundraising in aid of our Charity. A small amount of fundraising is carried out on the Trust's premises by volunteers acting on behalf of our Charity. These volunteers receive in-house training and are recruited and monitored by the Trust's Voluntary Services team. There have been no issues of non-compliance with the Code of Fundraising Practice during 2024/25. There were none in the previous year.

Complaints are dealt with in line with the Norfolk & Norwich University Hospitals NHS Foundation Trust complaints policy, which can be found on their website. We received zero complaints in the 2024/25 financial year. In the previous year, we received zero complaints. Any complaints received are investigated, and responses made.

The Charity follows the Trust's Safeguarding Policy, which is in place to protect people in vulnerable circumstances. We also adhere to industry guidelines and regulations and are here to talk to individuals about our work, or to answer any questions. Contact can be made via our website, social media, emails, phone or by post.

# Annual Report 2024/25

## Equality, Diversity & Inclusion

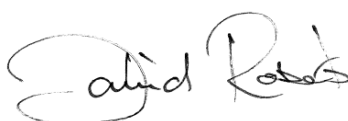
Through the Corporate Trustee model, the Trust's policies, procedures and systems apply to the Charity (with appropriate modification as circumstances require) and this includes those relating to Equality, Diversity and Inclusion (EDI). In this way the principles of equality, diversity and inclusion are embedded in the Charity and help to deliver its public benefit.

The Charity's approved Strategy (2023-27) confirms that its Vision is that of *'Supporting our hospitals to provide the best care for every patient'*. In order to implement this Vision, the Charity has an approved Standard Operating Procedure (SOP) for Grant Making which ensures that applications for grants are reviewed for impact on EDI considerations. The SOP includes positive criteria for *"awards that have benefit for 'hard to reach' groups (to include considerations of diversity and inclusion but also an openness to support staff and patient groups other than the 'usual suspects' for charity funding)"*. In our circumstances, benefit to rural and coastal communities can be of particular relevance where this can enhance access to improved and specialist services.

The commitment to promoting equality, diversity and inclusion in providing benefit to patients is reflected in grants awarded by the Charity during 2024/25, for example:

Focus of Charity grant	£Value	EDI consideration
Funding purchase of specialist examination chairs for patients in Neurophysiology	£12,970	Suitable for a broad range of patients including adults & children but also bariatric patients and those with disabilities.
Purchase of additional hand-held and portable scanning and diagnostic equipment for community midwives	£32,641	Increased supply of hand-held portable devices facilitates ante-natal and post-natal monitoring in the community, supporting care and reducing the need for unnecessary patient travel
Purchase of a haemoscreen analyser for use in North Norfolk Cancer Centre	£24,535	Improved facilities in North Norfolk for monitoring and investigation of patients receiving cancer treatment
Purchase of echocardiogram machine to enhance capability of service at Cromer & District Hospital	£99,995	Enhanced access to specialist investigation for patients in North Norfolk
Creation of dedicated clinic space at Cromer & District Hospital for the Walsingham Community Midwifery Team	£98,000	Enhanced flexibility and access for staff and patients, improving services for vulnerable and 'hard-to-reach' cohorts of patients, such as those requiring intervention from Tobacco Dependency Advisors.

Signed on behalf of the trustee by



## Statement of the Corporate Trustee's responsibilities in respect of the Corporate Trustee's annual report and the financial statements

Under the charity law, the corporate trustee is responsible for preparing the Corporate Trustee's Annual Report and the financial statements in accordance with applicable law and regulations. The corporate trustee is required to prepare the financial statements in accordance with UK Accounting Standards, including FRS 102 *The Financial Reporting Standard applicable in the UK and Republic of Ireland*.

The financial statements are required by law to give a true and fair view of the state of affairs of the charity and of the incoming resources and application of resources for that period.

In preparing these financial statements, generally accepted accounting practice entails that the corporate trustee:

- select suitable accounting policies and then apply them consistently;
- observe the methods and principles in the Charities SORP 2019 (FRS102);
- make judgements and estimates that are reasonable and prudent;
- state whether applicable UK Accounting Standards and the Statement of Recommended Practice have been followed, subject to any material departures disclosed and explained in the financial statements;
- state whether the financial statements comply with the trust deed and rules, subject to any material departures disclosed and explained in the financial statements;
- assess the charity's ability to continue as a going concern, disclosing, as applicable, matters related to going concern; and
- use the going concern basis of accounting unless they either intend to liquidate the charity or to cease operations or have no realistic alternative but to do so.

The corporate trustee is required to act in accordance with the trust deed and the rules of the charity, within the framework of trust law. They are responsible for keeping accounting records which are sufficient to show and explain the charity's transactions and disclose at any time, with reasonable accuracy, the financial position of the charity at that time, and to enable the corporate trustee to ensure that, where any statements of accounts are prepared by them under section 132(1) of the Charities Act 2011, those statements of accounts comply with the requirements of regulations under that provision. They are responsible for such internal control as they determine is necessary to enable the preparation of financial statements that are free from material misstatement, whether due to fraud or error, and have general responsibility for taking such steps as are reasonably open to them to safeguard the assets of the charity and to prevent and detect fraud and other irregularities.

The corporate trustee is responsible for the maintenance and integrity of the financial and other information included on the charity's website. Legislation in the UK governing the preparation and dissemination of financial statements may differ from legislation in other jurisdictions.

These financial statements were approved on 28 January 2026 and signed on behalf of the corporate trustee by:

Signed 

Name: David Roberts, Interim Group Chair, Norfolk & Waveney University Hospitals Group

Date: 28 January 2026



# Independent Auditor's Report to the Corporate Trustee of Norfolk and Norwich Hospitals Charity

## Opinion

We have audited the financial statements of Norfolk and Norwich Hospitals Charity (the 'charity') for the year ended 31 March 2025 which comprise the Statement of Financial Activities, the Balance Sheet, the Statement of Cash Flows and notes to the financial statements, including significant accounting policies. The financial reporting framework that has been applied in their preparation is applicable law and United Kingdom Accounting Standards, including Financial Reporting Standard 102 *The Financial Reporting Standard applicable in the UK and Republic of Ireland* (United Kingdom Generally Accepted Accounting Practice).

In our opinion the financial statements:

- give a true and fair view of the state of the charity's affairs as at 31 March 2025, and of its incoming resources and application of resources, including its income and expenditure, for the year then ended;
- have been properly prepared in accordance with United Kingdom Generally Accepted Accounting Practice; and
- have been prepared in accordance with the requirements of the Charities Act 2011.

## Basis for opinion

We conducted our audit in accordance with International Standards on Auditing (UK) (ISAs (UK)) and applicable law. Our responsibilities under those standards are further described in the auditor responsibilities for the audit of the financial statements section of our report. We are independent of the charity in accordance with the ethical requirements that are relevant to our audit of the financial statements in the UK, including the FRC's Ethical Standard, and we have fulfilled our other ethical responsibilities in accordance with these requirements. We believe that the audit evidence we have obtained is sufficient and appropriate to provide a basis for our opinion.

## Conclusions relating to going concern

In auditing the financial statements, we have concluded that the trustee's use of the going concern basis of accounting in the preparation of the financial statements is appropriate.

Based on the work we have performed, we have not identified any material uncertainties relating to events or conditions that, individually or collectively, may cast significant doubt on the charity's ability to continue as a going concern for a period of at least twelve months from when the financial statements are authorised for issue.

Our responsibilities and the responsibilities of the Corporate Trustee with respect to going concern are described in the relevant sections of this report.

### **Other information**

The other information comprises the information included in the trustee's annual report, other than the financial statements and our auditor's report thereon. The Corporate Trustee is responsible for the other information. Our opinion on the financial statements does not cover the other information and we do not express any form of assurance conclusion thereon.

Our responsibility is to read the other information and, in doing so, consider whether the other information is materially inconsistent with the financial statements or our knowledge obtained in the course of the audit or otherwise appears to be materially misstated. If we identify such material inconsistencies or apparent material misstatements, we are required to determine whether this gives rise to a material misstatement in the financial statements themselves. If, based on the work we have performed, we conclude that there is a material misstatement of this other information, we are required to report that fact.

We have nothing to report in this regard.

### **Matters on which we are required to report by exception**

We have nothing to report in respect of the following matters in relation to which the Charities (Accounts and Reports) Regulations 2008 require us to report to you if, in our opinion:

- the information given in the Corporate Trustee's report is inconsistent in any material respect with the financial statements; or
- sufficient accounting records have not been kept; or
- the financial statements are not in agreement with the accounting records; or
- we have not received all the information and explanations we require for our audit.

### **Responsibilities of the Corporate Trustee**

As explained more fully in the Corporate Trustee's responsibilities statement, the Corporate Trustee is responsible for the preparation of the financial statements and for being satisfied that they give a true and fair view, and for such internal control as the Corporate Trustee determines is necessary to enable the preparation of financial statements that are free from material misstatement, whether due to fraud or error.

In preparing the financial statements, the Corporate Trustee is responsible for assessing the charity's ability to continue as a going concern, disclosing, as applicable, matters related to going concern and using the going concern basis of accounting unless the Corporate Trustee either intends to liquidate the charity or to cease operations, or have no realistic alternative but to do so.

## **Auditor responsibilities for the audit of the financial statements**

We have been appointed as auditor under section 144 of the Charities Act 2011 and report in accordance with the Act and relevant regulations made or having effect thereunder.

Our objectives are to obtain reasonable assurance about whether the financial statements as a whole are free from material misstatement, whether due to fraud or error, and to issue an auditor's report that includes our opinion. Reasonable assurance is a high level of assurance, but is not a guarantee that an audit conducted in accordance with ISAs (UK) will always detect a material misstatement when it exists. Misstatements can arise from fraud or error and are considered material if, individually or in the aggregate, they could reasonably be expected to influence the economic decisions of users taken on the basis of these financial statements.

Irregularities, including fraud, are instances of non-compliance with laws and regulations. We design procedures in line with our responsibilities, outlined above, to detect material misstatements in respect of irregularities, including fraud. The extent to which our procedures are capable of detecting irregularities, including fraud is detailed below:

- Enquiry of management about any known or suspected instances of non-compliance with laws and regulations, and fraud;
- Enquiry of management around actual and potential litigation and claims;
- Reviewing financial statement disclosures and testing to supporting documentation to assess compliance with applicable laws and regulations; and
- Performing audit work over the risk of management override of controls, including testing of journal entries and other adjustments for appropriateness, and evaluating the rationale of any significant transactions outside the course of normal operations.

Because of the inherent limitations of an audit, there is a risk that we will not detect all irregularities, including those leading to a material misstatement in the financial statements or non-compliance with regulation. This risk increases the more that compliance with a law or regulation is removed from the events and transactions reflected in the financial statements, as we will be less likely to become aware of instances of non-compliance. The risk is also greater regarding irregularities occurring due to fraud rather than error, as fraud involves intentional concealment, forgery, collusion, omission or misrepresentation.

A further description of our responsibilities is available on the FRC's website at: <https://www.frc.org.uk/auditorsresponsibilities>. This description forms part of our auditor's report.



### **Use of our report**

This report is made solely to the charity's Corporate Trustee, as a body, in accordance with Part 4 of the Charities (Accounts and Reports) Regulations 2008. Our audit work has been undertaken so that we might state to the charity's Corporate Trustee those matters we are required to state to them in an auditor's report and for no other purpose. To the fullest extent permitted by law, we do not accept or assume responsibility to anyone other than the charity and the charity's Corporate Trustee as a body, for our audit work, for this report, or for the opinions we have formed.



### **Whittings LLP**

Statutory Auditor

Greenwood House

Greenwood Court

Skyliner Way

Bury St Edmunds

Suffolk

IP32 7GY

Date: 28 January 2026

Whittings LLP is eligible for appointment as auditor of the charity by virtue of its eligibility for appointment as auditor of a company under section 1212 of the Companies Act 2006.

# Annual Report 2024/25

## How to contact us

Further information about the Charity is available via our website at [www.nnhospitalscharity.org.uk](http://www.nnhospitalscharity.org.uk)

### The charity office and working address of the N&N Hospitals Charity:

c/o The Head of Charity

N&N Hospitals Charity

East Atrium

Norfolk & Norwich University Hospital

Norwich

NR4 7UY

Telephone - 01603 287107

Email - [charity@nnuh.nhs.uk](mailto:charity@nnuh.nhs.uk)

### The corporate trustee, Norfolk and Norwich University Hospitals NHS Foundation Trust, principal address:

The Chief Executive

Norfolk and Norwich University Hospital

Norwich Research Park

Norwich

NR4 7UY

Telephone - 01603 286286



# Statement of Financial Activities

The Statement of Financial Activities is a financial report detailing the change in the charity's net assets during the financial year.

It provides an analysis of the income received and expenditure by the charity on its activities and presents a reconciliation of the movements in a charity's funds for the reporting period, which runs from 1 April 2024 to 31 March 2025.

		2024/25			2023/24		
		Unrestricted Funds	Restricted Funds	Total Funds	Unrestricted Funds	Restricted Funds	Total Funds
	Note	£000s	£000s	£000s	£000s	£000s	£000s
<b>Income from:</b>							
Donations and Legacies	3	1,624	0	1,624	2,771	108	2,879
Investments	4	301	0	301	242	0	242
Charitable Activities	5	44	0	44	88	0	88
Other Trading Activities	5	88	0	88	53	0	53
Other Income	5	32	0	32	39	0	39
<b>Total Income</b>		<b>2,089</b>	<b>0</b>	<b>2,089</b>	<b>3,193</b>	<b>108</b>	<b>3,301</b>
<b>Expenditure On:</b>							
Charitable Activities	7&8	1,502	77	1,579	2,491	269	2,760
Raising Funds	9	402	2	404	219	28	247
<b>Total Expenditure</b>		<b>1,904</b>	<b>79</b>	<b>1,983</b>	<b>2,710</b>	<b>297</b>	<b>3,007</b>
Net (Losses)/Gains on Investments	14	(412)	0	(412)	444	0	444
Transfers between funds		0	0	0	1	(1)	0
<b>Net Movement in Funds</b>		<b>(227)</b>	<b>(79)</b>	<b>(306)</b>	<b>928</b>	<b>(190)</b>	<b>738</b>
<b>Reconciliation of funds</b>							
Total Funds Brought Forward	19	10,297	128	10,425	9,369	318	9,687
Total Funds Carried Forward		<b>10,070</b>	<b>49</b>	<b>10,119</b>	<b>10,297</b>	<b>128</b>	<b>10,425</b>

The notes on pages 35 to 47 form part of these financial statements.



The balance sheet provides a view of the charity's assets and liabilities and how these are represented by the different classes of funds held by the charity. The objective of the balance sheet is to show the resources available to the charity and whether these are available for all purposes of the charity or must be used for specific purposes because of legal restrictions placed on their use.

		2024/25			2023/24		
		Unrestricted Funds	Restricted Funds	Total Funds	Unrestricted Funds	Restricted Funds	Total Funds
	Note	£000s	£000s	£000s	£000s	£000s	£000s
<b>Fixed Assets</b>							
Non-Current Assets	13	194	0	194	137	0	137
Investments	14	8,403	0	8,403	8,685	0	8,685
<b>Total Fixed Assets</b>		<b>8,597</b>	<b>0</b>	<b>8,597</b>	<b>8,822</b>	<b>0</b>	<b>8,822</b>
<b>Current Assets</b>							
Stock	15	18	0	18	4	0	4
Debtors	16	255	0	255	562	0	562
Short Term Investments And Deposits	17	1,300	0	1,300	500	0	500
Cash At Bank And In Hand	17	2,478	49	2,527	4,038	133	4,171
<b>Total Current Assets</b>		<b>4,051</b>	<b>49</b>	<b>4,100</b>	<b>5,104</b>	<b>133</b>	<b>5,237</b>
<b>Creditors</b>							
Creditors: Amounts Falling Due Within One Year	18	(2,578)	0	(2,578)	(3,629)	(5)	(3,634)
<b>Net Current Assets</b>		<b>1,473</b>	<b>49</b>	<b>1,522</b>	<b>1,475</b>	<b>128</b>	<b>1,603</b>
<b>Total Net Assets</b>		<b>10,070</b>	<b>49</b>	<b>10,119</b>	<b>10,297</b>	<b>128</b>	<b>10,425</b>
<b>Total Funds</b>							
Restricted	19	0	49	49	0	128	128
Unrestricted	19	385	0	385	934	0	934
Unrestricted (designated)	19	9,685	0	9,685	9,363	0	9,363
<b>Total Funds</b>		<b>10,070</b>	<b>49</b>	<b>10,119</b>	<b>10,297</b>	<b>128</b>	<b>10,425</b>

The financial statements on pages 32 to 47 were approved by the Board of the Trustee on 28 January 2026 and signed on its behalf by:

Signed: 

Name: David Roberts, Interim Group Chair, Norfolk & Waveney University Hospitals Group

Date: 28 January 2026

## Statement of Cash Flows

The Statement of Cash Flows aims to show how changes in balance sheet accounts and income affect cash and cash equivalents, and breaks the analysis down to operating, investing, and financing activities. The cash flow statement is concerned with the flow of cash in and out of the charity during the financial year, which runs from 1 April 2024 to 31 March 2025.

	Note	2024/25 £000s	2023/24 £000s
<b>Cash flows from operating activities</b>			
<i>Net cash (used in)/provided by operating activities</i>		<b>(878)</b>	<b>1,018</b>
<b>Cash flows from investing activities</b>			
Dividends and interest from investment	4	301	242
Purchase of investments	14	(1,402)	(1,368)
Purchase of non-current assets	13	(138)	0
Proceeds on disposal of investments		1,273	1,193
<i>Net cash provided by/(used in) investing activities</i>		<b>34</b>	<b>67</b>
 <i>Change in cash and cash equivalents in the reporting period</i>		 <b>(844)</b>	 <b>1,085</b>
 <b>Cash and cash equivalents at the beginning of the reporting period</b>		 4,671	 3,586
<i>Cash and cash equivalents at the end of the reporting period</i>	17	<b>3,827</b>	<b>4,671</b>
 <b>Reconciliation of net movement in funds to net cash flow from operating activities</b>			
Net movement in funds (statement of financial activities)		(306)	738
Losses/(Gains) on investments	14	412	(444)
Income from investments	4	(301)	(242)
Depreciation	13	80	53
(Increase)/Decrease in stock	15	(14)	(1)
Decrease/(Increase) in debtors	16	307	400
(Decrease)/Increase in creditors	18	(1,056)	514
<b>Cash (outflow)/inflow from operating activities</b>		<b>(878)</b>	<b>1,018</b>

The notes on pages 35 to 47 form part of these financial statements.

# Notes to the Accounts

## 1. Accounting Policies

### (a) Basis of preparation

The financial statements have been prepared under the historic cost convention, except for investments which are included at fair value.

The accounts (financial statements) have been prepared in accordance with the Statement of Recommended Practice: Accounting and Reporting by Charities preparing their accounts in accordance with the Financial Reporting Standard applicable in the UK and Republic of Ireland (FRS 102) issued in October 2019 and the Financial Reporting Standard applicable in the United Kingdom and Republic of Ireland (FRS 102) and the Charities Act 2011 and UK Generally Accepted Practice as it applies from 1 January 2019.

The charity is a public benefit entity as defined by FRS 102.

The trustee considers that there are no material uncertainties about the Norfolk and Norwich Hospitals Charity's ability to continue as a going concern.

### (b) Funds structure

Where there is a legal restriction on the purpose to which a fund may be put, the fund is classified either as a restricted fund or an endowment fund.

Restricted funds are those where the donor has provided for the donation to be spent in furtherance of a specified charitable purpose. N&N Hospitals Charity's restricted funds typically result from grants received for specific projects.

Endowment funds arise when the donor has expressly provided that the gift is to be invested and only the income of the fund may be spent. The N&N Hospitals Charity currently has no endowment funds.

Those funds which are neither endowment nor restricted funds, are unrestricted funds which are sub analysed between designated (earmarked) funds where the trustee has set aside amounts to be used for specific purposes or which reflect the non-binding wishes of donors, and unrestricted funds which are at the trustee's discretion. Unrestricted funds include the general fund and represent the charity's reserves. The major funds held in each of these categories are disclosed in note 19.

### (c) Incoming resources

All incoming resources are recognised once the charity has entitlement to the resources, it is probable (more likely than not) that the resources will be received, and the monetary value of incoming resources can be measured with sufficient reliability.

Where there are terms or conditions attached to incoming resources, particularly grants, then these terms or conditions must be met before the income is recognised, as the entitlement condition will not be satisfied until that point. Where terms or conditions have not been met or uncertainty exists as to whether they can be met then the relevant income is not recognised in the year but deferred and shown on the balance sheet as deferred income.

### (d) Incoming resources from legacies

Legacies are accounted for as incoming resources either upon receipt or where the receipt of the legacy is probable. Receipt is probable when:

- confirmation has been received from the representatives of the estate(s) that probate has been granted;
- the executors have established that there are sufficient assets in the estate to pay the legacy; and
- all conditions attached to the legacy have been fulfilled or are within the charity's control.

If there is uncertainty as to the amount of the legacy, and it cannot be reliably estimated, then the legacy is shown as a contingent asset until all the conditions for income recognition are met.



## Notes to the Accounts

### (e) Gifts in Kind

Gifts in kind such as food and care packages are not accounted for when they are accepted and immediately distributed unless a single donation is material.

Gifts of tangible assets such as microwaves and fridges, and Amazon Wish List donations, are recognised as a donation at fair value (market price) on receipt, and charitable expenditure when they are distributed.

Where gifts in kind are held before being distributed to beneficiaries they are recognised at fair value as stock until they are distributed.

### (f) Resources expended and irrecoverable VAT

All expenditure is accounted for on an accruals basis and is recognised when the following criteria are met:

- there is a present legal or constructive obligation resulting from a past event
- it is more likely than not that a transfer of benefits (usually a cash payment) will be required in settlement
- the amount of the obligation can be measured or estimated reliably.

Irrecoverable VAT is charged against the category of resources expended for which it was incurred.

### (g) Recognition of expenditure and associated liabilities because of grant

Grants payable are payments made to linked, related party, or third-party NHS bodies and non-NHS bodies, in furtherance of the charitable objectives of the funds held on trust, primarily relief of those who are ill.

Grant payments are recognised as expenditure when the conditions for their payment have been met or where there is a constructive obligation to make a payment.

A constructive obligation arises when:

- We have communicated our intention to award a grant to a recipient who then has a reasonable expectation that they will receive a grant; or
- We have made a public announcement about a commitment which is specific enough for the recipient to have a reasonable expectation that they will receive a grant;

The trustee has control over the amount and timing of grant payments and consequently where approval has been given by the trustee and any of the above criteria have been met then a liability is recognised. Grants are awarded on condition that the Charity is acknowledged as the funder, and a report on the impact of expenditure is provided within six months of payment being made.

If a grant has been offered but there is uncertainty as to whether it will be accepted or whether conditions will be met, then no liability is recognised, but an appropriate designation is made in the relevant fund. Grant commitments are shown in Note 20.

### (h) Support and governance costs

Support costs are those costs which do not relate directly to a single charitable activity. These include some staff costs, costs of administration and IT support. Governance costs include audit, and any other regulatory fees. The analysis of support and governance costs are shown in note 8.

### (i) Fundraising costs

The costs of generating funds are those costs attributable to generating income for the charity, other than those costs incurred in undertaking charitable activities or the costs incurred in undertaking trading activities in furtherance of the charity's objects. The costs of generating funds represent fundraising costs together with the salaries for the charity's fundraising team and are shown in note 9.

### (j) Charitable activities

Costs of charitable activities comprise all costs incurred in the pursuit of the charitable objects of the charity. These costs, where not wholly attributable, are apportioned between the categories of charitable expenditure in addition to the direct costs. The total costs of each category of charitable expenditure include an apportionment of support costs as shown in note 7.

## Notes to the Accounts

### **(k) Fixed asset investments**

Investments are a form of basic financial instrument. Fixed asset investments are initially recognised at their transaction value and are subsequently measured at their fair value (market value) as at the balance sheet date. The Statement of Financial Activities includes the net gains and losses arising on revaluation and disposals throughout the year. Quoted stocks and shares are included in the Balance Sheet at the current market value quoted by the investment analyst, excluding dividend. Other investments are included at the trustee's best estimate of market value.

The main form of financial risk faced by the charity is that of volatility in equity markets and investment markets due to wider economic conditions, the attitude of investors to investment risk, and changes in sentiment concerning equities and within particular sectors or sub sectors. Further information on the N&N Hospitals Charity's investments can be found in note 14.

### **(l) Non-Current assets**

Non-Current assets that are held by the charity and cost more than £5,000 are capitalised and valued at historic cost. Depreciation is charged on furniture and equipment, which is written off on a straight-line basis over their estimated useful life of five years.

Non-Current assets (WIP) refer to Work-in-Progress on non-current assets for the Charity. No depreciation is charged until the assets are brought into use.

### **(m) Stock**

Stock held for resale is valued at the lower of cost and net realisable value. Stocks of non-perishable gift in kind items held at the year end are recorded at fair value. Artwork held for sale is valued at an estimated cost, based on recent sales of similar works.

### **(n) Debtors**

Debtors are amounts owed to the charity. They are measured based on their recoverable amount.

### **(o) Cash and cash equivalents**

Cash at bank and in hand is held to meet the day to day running costs of the charity as they fall due. Cash equivalents are short term, highly liquid investments, usually in 90-day notice interest bearing savings accounts.

### **(p) Creditors**

Creditors are amounts owed by the charity. They are measured at the amount that the charity expects to have to pay to settle the debt. The Charity has no amounts which are owed in more than a year.

### **(q) Realised gains and losses**

All gains and losses are taken to the Statement of Financial Activities as they arise. Realised gains and losses on investments are calculated as the difference between sales proceeds and carrying value in the previous month (or purchase date). Unrealised gains and losses are calculated as the difference between the market value at the year end and opening carrying value (or purchase date if later).

### **(r) Staff costs and pensions**

Norfolk and Norwich University Hospitals NHS Foundation Trust (the Trust) fully re-charged the N&N Hospitals Charity for the members of staff who work for the charity.

Staff members belong to the NHS Pension Scheme which is an unfunded defined benefit scheme accounted for as a defined contribution scheme. The recharge from the Trust includes the employee contributions to that scheme. For more information on the NHS Pension Scheme refer to the Trust's annual report and accounts.

# Notes to the Accounts

## 2. Related party transactions

The Charity has a related party relationship with the Norfolk and Norwich University Hospitals NHS Foundation Trust. The Trust is the Corporate Trustee for the Charity as well as its main grant beneficiary.

Transactions between the Charity and the Trust during the year were in relation to salary payments for its staff, income invoiced by the Trust for the Charity, payment of Charity supplier invoices that were processed through the Trust's procurement and payment systems and refunded by the Charity, and for administrative and management costs.

The Trust recharged £375,674 to the Charity (2023/24 £262,206) for its staffing and administration costs.

The services of the Norfolk and Norwich University Hospitals NHS Foundation Trust have benefited from payments of £773,727 (2023/24 £2,343,760) from the Charity for enhancement of the patient environment, investment in staff, additional equipment and research.

During 2024/25 capital assets to the value of £169,836 (2023/24 £47,744) were purchased by the Charity and donated to the Trust.

None of the members of the Trust board or parties related to them have undertaken any transactions with the N&N Hospitals Charity or received any benefit from the charity in payment or kind. Board members received no honoraria, emoluments, or expenses in the year.

At the end of the financial year £2,304,494 was owed by the Charity to the Trust. (2023/24 £306,398). The total accrued grant expenditure for 2024/25 was £285,087, for the remaining balance relating to the new Orthopaedic Centre and the Community Diagnostic Centre (2023/24 £3,267,771).

## 3. Income from donations and legacies

	2024/25			2023/24
	Unrestricted Funds	Restricted Funds	Total Funds	Total Funds
	£000s	£000s	£000s	£000s
<b>Voluntary Income</b>				
General donations	605	0	605	568
Corporate donations	3	0	3	160
Legacies	805	0	805	1,483
Grants	211	0	211	668
<b>Total Voluntary Income</b>	<b>1,624</b>	<b>0</b>	<b>1,624</b>	<b>2,879</b>

## 4. Income from investments

	2024/25			2023/24
	Unrestricted Funds	Restricted Funds	Total Funds	Total Funds
	£000s	£000s	£000s	£000s
<b>Investment Income</b>				
Interest on deposits	97	0	97	44
Fixed asset equity investments	204	0	204	198
<b>Total Investment Income</b>	<b>301</b>	<b>0</b>	<b>301</b>	<b>242</b>

# Notes to the Accounts

## 5. Analysis of other income

	2024/25			2023/24
	Unrestricted Funds	Restricted Funds	Total Funds	Total Funds
	£000s	£000s	£000s	£000s
<b><i>Incoming Resources from Charitable Activities</i></b>				
Training Income	44	0	44	88
<b>Total Incoming Resources from Charitable Activities</b>	<b>44</b>	<b>0</b>	<b>44</b>	<b>88</b>
<b><i>Activities for Generating Funds</i></b>				
Fundraising events	21	0	21	0
Lotteries and raffles	20	0	20	16
Trading income	47	0	47	37
<b>Total Activities for Generating Funds</b>	<b>88</b>	<b>0</b>	<b>88</b>	<b>53</b>
<b><i>Other Incoming Resources</i></b>				
Other Income	32	0	32	39
<b>Total Other Incoming Resources</b>	<b>32</b>	<b>0</b>	<b>32</b>	<b>39</b>

## 6. Role of volunteers

Like all charities, the N&N Hospitals Charity is reliant on a team of volunteers for our smooth running. Our volunteers perform two roles:

- Fund advisors – there are about 400 Trust staff who support the Charity Committee when deciding how the Charity's designated funds should be spent. These funds are designated (or earmarked) by the Charity Committee to be spent for a particular purpose or in a ward or department. Each fund advisor submits grant applications and monitors the financial status of their fund.
- Fundraisers – there are many local volunteers who actively fundraise for the N&N Hospitals Charity by running events.

In accordance with the SORP, due to the absence of any reliable measurement basis, the contribution of these volunteers is not recognised in the accounts.

## 7. Analysis of charitable expenditure

The charity did not undertake any direct charitable activities on its own account during the year. Charitable expenditure was in the form of grant funding to the Trust to carry out activities or to purchase equipment that will benefit NHS patients and their families.

	2024/25			2023/24
	Support Costs	Grant funded activity	Total	Total
	£000s	£000s	£000s	£000s
<b><i>Charitable Activities</i></b>				
Enhancing the patient environment	57	368	425	517
Investing in our staff	49	315	364	442
Life saving equipment & new technology	98	627	725	1,676
Research	9	56	65	125
<b>Total Charitable Activities</b>	<b>213</b>	<b>1,366</b>	<b>1,579</b>	<b>2,760</b>



# Notes to the Accounts

## 8. Analysis of support costs and governance costs

Support costs are back-office costs related to the day-to-day running of the charity, including depreciation on the Charity Hub. Governance costs are those support costs which relate to the strategic management of the charity.

	2024/25			2023/24
	Unrestricted Funds	Restricted Funds	Total Funds	Total Funds
	£000s	£000s	£000s	£000s
<b><i>Support costs included in Charitable Activities</i></b>				
Charity Staff Costs	114	0	114	97
Management and Administration Costs	28	0	28	34
<b>Total Support Costs</b>	<b>142</b>	<b>0</b>	<b>142</b>	<b>131</b>
<b><i>Governance Costs included in Charitable Activities</i></b>				
Audit	19	0	19	13
Staff costs	46	0	46	46
Other Governance Costs	6	0	6	1
<b>Total Governance Costs</b>	<b>71</b>	<b>0</b>	<b>71</b>	<b>60</b>
<b>Total Support and Governance Costs</b>	<b>213</b>	<b>0</b>	<b>213</b>	<b>191</b>

## 9. Analysis of expenditure on raising funds

	2024/25			2023/24
	Unrestricted Funds	Restricted Funds	Total Funds	Total Funds
	£000s	£000s	£000s	£000s
<b><i>Cost of Raising Funds</i></b>				
Fundraising staff costs	212	0	212	110
Fundraising expenditure	190	2	192	137
<b>Total Costs of Generating Funds</b>	<b>402</b>	<b>2</b>	<b>404</b>	<b>247</b>

Fundraising expenditure includes depreciation on equipment used to generate trading income.

## 10. Trustee remuneration, benefits, and expenses

Members of the Trust board give their time freely and receive no remuneration for the work that they undertake in relation to the N&N Hospitals Charity. They can claim expenses, however, to reimburse them for costs that they incur in fulfilling their duties relating to N&N Hospitals Charity – these include travelling specifically for Charity Committee meetings and Charity specific training events.

No expenses were claimed from the Charity by committee members (2023/24 nil)

# Notes to the Accounts

## 11. Analysis of staff costs

The average number of full-time equivalent employees during the year was 8.0 (2023/24 5.3).

<b>Staff Costs</b>	<b>2024/25</b>	<b>2023/24</b>
	<b>£000s</b>	<b>£000s</b>
Salaries and Wages	265	176
Social Security Costs	26	17
Other Pension Costs	34	22
<b>Total</b>	<b>325</b>	<b>215</b>

A further recharge of time spent by Finance Department Managers was made by the Trust. This related to time spent authorising payments, reviewing reconciliations, and checking the annual accounts. The amount recharged was £4k (2023/24 £4k).

The N&N Hospitals Charity considers its key management personnel to be the Charity Director, who is the Board Secretary for the Norfolk and Norwich University Hospitals NHS Foundation Trust. A recharge of time spent by the Charity Director and his administrative support was made by the Trust. The amount recharged was £42k (2023/24 £39k).

One employee had emoluments within the range of £60,000 to £69,999, not including retirement benefits which are accruing under a defined benefit scheme (2023/24 nil)

## 12. Auditor's remuneration

The auditor's remuneration of £16,000 (2023/24: £11,000) related solely to the audit with no other additional work being undertaken (2023/24 nil). These figures are exclusive of VAT, however because the Charity is not able to reclaim VAT it is included in Note 8 figures. The 2024/25 audit was carried out by Whitings LLP, replacing KPMG.

## 13. Non-Current assets

Fixtures, fittings and equipment relates to the Charity Hub and three Charity Cafes.

	<b>2024/25</b>	<b>2023/24</b>
	<b>Fixtures, Fittings &amp; Equipment</b>	<b>Total Non-Current Assets</b>
	<b>£000s</b>	<b>£000s</b>
<b>Cost or valuation</b>		
Balance at start of year	264	264
Additions/(Disposals)	138	138
<b>Closing Balance</b>	<b>402</b>	<b>402</b>
<b>Accumulated Depreciation</b>		
Balance at start of year	127	127
Charge for year	81	81
<b>Closing Balance</b>	<b>208</b>	<b>208</b>
<b>Carrying value at start of year</b>	<b>137</b>	<b>137</b>
<b>Carrying value at end of year</b>	<b>194</b>	<b>137</b>

Depreciation charges related to trading income are recorded as fundraising expenditure on the SOFA. All other depreciation is recorded as support costs within charitable expenditure.

# Notes to the Accounts

## 14. Fixed asset investments

All investments are carried at their fair value and are managed by expert advisors. Cash held by our asset managers is available on request, and is included in the investment split for comparison, but is included in the cash and cash equivalents figure on the balance sheet.

<i><b>Movement in Fixed Asset Investments</b></i>	<b>2024/25</b>	<b>2023/24</b>
	<b>£000s</b>	<b>£000s</b>
Market Value at Start of Financial year	8,685	8,066
Less: Disposals at Carrying Value	(1,373)	(1,192)
Add: Acquisitions at Cost	1,402	1,368
Net (Loss)/Gain on Revaluation	(311)	443
<b>Market Value at End of Financial Year</b>	<b>8,403</b>	<b>8,685</b>
<i><b>Fixed Asset Investment Split</b></i>	<b>2024/25</b>	<b>2023/24</b>
Cash	2.20%	15.68%
Gilts/Fixed Interest	22.20%	14.48%
Investment/Unit Trusts	13.55%	11.00%
Equities	62.05%	58.84%
	<b>100%</b>	<b>100%</b>

Realised losses on investments sold during the year amount to £101k, which combined with the net loss on revaluation totals a net loss on investments of £412k. (2023/24: £1k realised gain, total gains £444.k)

## 15. Stock

<i><b>Stock</b></i>	<b>2024/25</b>	<b>2023/24</b>
	<b>£000s</b>	<b>£000s</b>
Online shop stock	1	3
Gifts in Kind stock	0	1
Promotional items	2	0
Artwork (held for sale)	15	0
<b>Total stock</b>	<b>18</b>	<b>4</b>

## 16. Analysis of current debtors

<i><b>Amounts Falling Due Within One Year</b></i>	<b>2024/25</b>	<b>2023/24</b>
	<b>£000s</b>	<b>£000s</b>
Prepayments	9	0
Accrued Income	241	561
Other Debtors	5	1
<b>Total Debtors Falling Due Within One Year</b>	<b>255</b>	<b>562</b>

Accrued Income includes £178k legacy income, of which £159k was received between the financial year end and signing of the accounts, where receipt was probable at year end, but amount and timing were unknown.

The Charity was notified of a potential legacy estimated at £750k. At the reporting date the amount could not be measured reliably. This legacy has not been accrued as income and is disclosed as a contingent asset.

## 17. Analysis of cash and cash equivalents

<i><b>Cash &amp; Cash Equivalents</b></i>	<b>2024/25</b>	<b>2023/24</b>
	<b>£000s</b>	<b>£000s</b>
Cash in hand & at bank	2,527	4,171
Short term investment	1,300	500
<b>Total</b>	<b>3,827</b>	<b>4,671</b>

Short term investment is a 6-month fixed term treasury deposit, maturing in April 2025.

# Notes to the Accounts

## 18. Analysis of liabilities

	2024/25	2023/24
<b>Amounts Falling Due Within One Year</b>	<b>£000s</b>	<b>£000s</b>
Trade Creditors	17	17
Amounts Due to NNUH NHS Foundation Trust	2,304	307
Accruals	257	3,310
<b>Total</b>	<b>2,578</b>	<b>3,634</b>

## 19. Analysis of funds

<b>Unrestricted funds</b>	Balance Apr 2024	Incoming resources	Resources expended	Gains and losses	Transfers	Balance Mar 2025
	£000s	£000s	£000s	£000s	£000s	£000s
N&N General Fund	825	535	607	(412)	(65)	276
Cromer General Fund	109	1	1	0	0	109
<b>Total</b>	<b>934</b>	<b>536</b>	<b>608</b>	<b>(412)</b>	<b>(65)</b>	<b>385</b>

<b>Name of fund</b>	<b>Description of the purpose of each fund</b>
Norfolk and Norwich General	For the benefit of staff and patients
Cromer General	For the benefit of staff and patients at the Cromer site

<b>Restricted Funds:</b>	Balance Apr 2024	Incoming resources	Resources expended	Transfers	Balance Mar 2025
	£000s	£000s	£000s	£000s	£000s
Friends Fund	63	0	25	0	38
Harry Hammerbeck Prize Fund	7	0	0	0	7
The Macleod Fund	5	0	1	0	4
NHS Charities Together Development Fund	2	0	2	0	0
NHS Charities Together Stage 1 Fund	7	0	7	0	0
NHS Charities Together Stage 3 Fund	42	0	42	0	0
Chloe Blossom Fund	2	0	2	0	0
<b>Total</b>	<b>128</b>	<b>0</b>	<b>79</b>	<b>0</b>	<b>49</b>

<b>Name of fund</b>	<b>Description of the purpose of each fund</b>
Friends Fund	For the benefit of patients and staff within the Trust
Henry Hammerbeck Prize Fund	For sustainability prizes
The Macleod Fund	For the benefit of paediatric patients within the Trust
NHS Charities Together Development Fund	Funding to support development and sustainability of NHS charities
NHS Charities Together Stage 1 Fund	For Covid support projects for NHS staff and patients
NHS Charities Together Stage 3 Fund	For Covid recovery and wellbeing projects for NHS staff and patients
Chloe Blossom Fund	To fund a bereavement nurse to support early pregnancy loss



# Notes to the Accounts

<i>Designated Funds</i>	Balance Apr 2024 £000s	Incoming resources £000s	Resources expended £000s	Transfers £000s	Balance Mar 2025 £000s
Surgical Robot Fund	0	3	0	1,497	1,500
Research Fund	35	117	24	630	758
Cancer Legacy Fund	1,305	191	123	(800)	573
Cromer Legacy Fund	1,037	5	298	(248)	496
Children & Families Fund	423	34	4	0	453
Renal Fund	189	1	2	196	384
AOS Legacy Fund	340	0	0	0	340
General Legacy Grants Fund	1,006	569	198	(1,079)	298
Radiotherapy & Oncology Fund	396	19	141	0	274
Heart Fund	107	160	22	0	245
Eye Legacy Fund	234	8	0	0	242
Boudicca Breast Cancer Fund	211	24	21	0	214
Children's Cancer Fund	200	0	0	0	200
Renal Legacy Fund	178	2	0	0	180
NICU Fund	134	84	42	(2)	174
Stroke & Neurosciences Fund	163	10	7	0	166
Orthopaedics Fund	174	0	11	0	163
Cardiology Fund	155	19	23	0	151
Critical Care Fund	149	3	6	0	146
Ear, Nose & Throat Fund	143	0	2	0	141
Upper Gastrointestinal Fund	141	2	7	0	136
Eye Department Fund	112	0	1	0	111
Neurosciences Fund	106	2	1	0	107
Others (129 funds)	2,425	300	363	(129)	2,233
<b>Total</b>	<b>9,363</b>	<b>1,553</b>	<b>1,296</b>	<b>65</b>	<b>9,685</b>

## Name of fund

## Description of the purpose of each fund

Surgical Robot Fund	To support the purchase of additional surgical robots
Research Fund	To support research at NNUH for patient benefit
Cancer Legacy Fund	Cause, prevention, treatment, cure & defeat of cancer
Cromer Legacy Fund	For the benefit of patients at the Cromer Hospital
Children & Families Fund	To support better care for children and their families in the Jenny Lind Children's Hospital
Renal Fund	For the benefit of renal patients
AOS Legacy Fund	Cause, prevention, treatment, cure & defeat of cancer
General Legacy Grants Fund	To support better care for patients where it is needed most
Radiotherapy & Oncology Fund	Cause, prevention, treatment, cure & defeat of cancer
Heart Fund	To support better care for patients' hearts
Eye Legacy Fund	To support better care for Eye Patients at NNUH
Boudicca Breast Cancer Fund	To support better Breast Cancer care at NNUH
Children's Cancer Fund	Cause, prevention, treatment, cure & defeat of cancer in children
Renal Legacy Fund	To support better care for renal patients
NICU Fund	To support better care for patients of NICU at NNUH

# Notes to the Accounts

Stroke & Neurosciences Fund	To support better care for stroke and neurosciences patients				
Orthopaedics Fund	For the benefit of orthopaedic patients				
Cardiology Fund	For the benefit of cardiology patients				
Critical Care Fund	For the benefit of critical care patients				
Ear, Nose & Throat Fund	For the benefit of ENT patients				
Upper Gastrointestinal Fund	To support better care for Upper GI patients at NNUH				
Eye Department Fund	For the benefit of ophthalmology patients				
Neurosciences Fund	For the benefit of neurology patients				
<b>Total funds</b>	<b>10,425</b>	<b>2,089</b>	<b>1,983</b>	<b>(412)</b>	<b>10,119</b>

## Prior year (2023/24)

<b>Unrestricted funds</b>	Balance Apr 2023	Incoming resources	Resources expended	Gains and losses	Transfers	Balance Mar 2024
	£000s	£000s	£000s	£000s	£000s	£000s
N&N General Fund	510	422	389	444	(162)	825
Cromer General Fund	121	0	9	0	(3)	109
<b>Total</b>	<b>631</b>	<b>422</b>	<b>398</b>	<b>444</b>	<b>(165)</b>	<b>934</b>

<b>Restricted Funds:</b>	Balance Apr 2023	Incoming resources	Resources expended	Transfers	Balance Mar 2024
	£000s	£000s	£000s	£000s	£000s
Friends Fund	63	0	0	0	63
NHS Charities Together Stage 3 Fund	104	0	62	0	42
Harry Hammerbeck Prize Fund	10	0	3	0	7
NHS Charities Together Stage 1 Fund	40	0	33	0	7
The Macleod Fund	11	0	6	0	5
NHS Charities Together Development Fund	33	0	30	(1)	2
Chloe Blossom Fund	57	0	55	0	2
NHS Charities Together Stage 2 Fund	0	108	108	0	0
<b>Total</b>	<b>318</b>	<b>108</b>	<b>297</b>	<b>(1)</b>	<b>128</b>

# Notes to the Accounts

<b>Designated Funds</b>	Balance Apr 2023 £000s	Incoming resources £000s	Resources expended £000s	Transfers £000s	Balance Mar 2024 £000s
Cancer Legacy Fund	888	307	1	111	1,305
Cromer Legacy Fund	631	396	(20)	(10)	1,037
General Legacy Grants Fund	237	431	38	376	1,006
Children & Families Fund	42	32	1	350	423
Radiotherapy & Oncology Fund	392	28	56	32	396
AOS Legacy Fund	346	1	0	(7)	340
Eye Legacy Fund	165	68	0	1	234
Boudicca Breast Cancer Fund	165	71	30	5	211
Children's Cancer Fund	204	0	0	(4)	200
Kidney Fund	197	0	0	(4)	193
Renal Fund	193	1	1	(4)	189
Renal Legacy Fund	49	130	0	(1)	178
Orthopaedics Fund	179	0	2	(3)	174
Stroke & Neurosciences Fund	26	82	1	56	163
Cardiology Fund	199	12	53	(3)	155
Critical Care Fund	134	22	4	(3)	149
Ear, Nose & Throat Fund	5	1	1	138	143
Upper Gastrointestinal Fund	144	0	1	(2)	141
NICU Fund	112	70	46	(2)	134
Eye Department Fund	113	5	4	(2)	112
N&N Imaging Fund	1,613	650	1,613	(538)	112
Heart Fund	151	1	45	0	107
Neurosciences Fund	110	0	2	(2)	106
Others (151 funds)	2,443	463	433	(318)	2,155
<b>Total</b>	<b>8,738</b>	<b>2,771</b>	<b>2,312</b>	<b>166</b>	<b>9,363</b>
<b>Total funds</b>	<b>9,687</b>	<b>3,301</b>	<b>3,007</b>	<b>444</b>	<b>10,425</b>

# Notes to the Accounts

## 20. Grant commitments

The Charity provides grants for the Trust, and as such does not have direct control over when, or if, grant funding will be drawn down. For this reason, grant commitments are not recorded in the charity's accounts until there is certainty that the grant funding is needed, and that the terms and conditions for payment have been met.

The effect of the grant commitments outstanding at the year end on each fund balance is detailed below:

<i>Unrestricted funds</i>	Balance Mar 2025 £000s	Grant Commitments £000s	Available Balance Mar 2025 £000s
N&N General Fund	276	195	81
Cromer General Fund	109	0	109
<b>Total</b>	<b>385</b>	<b>195</b>	<b>190</b>
<i>Restricted Funds:</i>	Balance Mar 2025 £000s	Grant Commitments £000s	Available Balance Mar 2025 £000s
Friends Fund	38	0	38
Harry Hammerbeck Prize Fund	7	1	6
The Macleod Fund	4	4	0
<b>Total</b>	<b>49</b>	<b>5</b>	<b>44</b>
<i>Designated Funds</i>	Balance Mar 2025 £000s	Grant Commitments £000s	Available Balance Mar 2025 £000s
Surgical Robot Fund	1,500	0	1,500
Research Fund	758	2	756
Cancer Legacy Fund	573	90	483
Cromer Legacy Fund	496	249	247
Children & Families Fund	453	80	373
Renal Fund	384	0	384
AOS Legacy Fund	340	0	340
General Legacy Grants Fund	298	252	46
Radiotherapy & Oncology Fund	274	46	228
Heart Fund	245	65	180
Eye Legacy Fund	242	1	241
Boudicca Breast Cancer Fund	214	32	182
Children's Cancer Fund	200	0	200
Renal Legacy Fund	180	0	180
NICU Fund	174	6	168
Stroke & Neurosciences Fund	166	2	164
Orthopaedics Fund	163	4	159
Cardiology Fund	151	76	75
Critical Care Fund	146	1	145
Ear, Nose & Throat Fund	141	0	141
Upper Gastrointestinal Fund	136	3	133
Eye Department Fund	111	3	108
Neurosciences Fund	107	0	107
Others (129 funds)	2,233	321	1,912
<b>Total</b>	<b>9,685</b>	<b>1,233</b>	<b>8,452</b>
<b>Total funds</b>	<b>10,119</b>	<b>1,433</b>	<b>8,686</b>