



Jessie's  fund

MUSIC HELPING CHILDREN

Annual Report and Accounts

2023 - 2024

## How we began

Jessica George was nine years old when she was diagnosed with an inoperable brain tumour. Jessie's Fund was established to meet the cost of extra treatment, but this bright and musical child died less than six months after her diagnosis, before she had been able to begin the treatment.

Jessie's Fund was registered as a charity in 1995, with the aim of enabling children with life-limiting illnesses or serious disabilities to be heard and supported through the language of music. Our UK-wide provision of interactive music-making and music therapy gives a voice to children who struggle to communicate.



## Mission

- ◆ To enable children in children's hospices and hospitals in the UK to access music therapy, by establishing posts for music therapists and providing appropriate musical instruments;
- ◆ To help children in special schools and hospitals to participate in creative musical activities, by offering the expertise of specialist professional musicians;
- ◆ To train staff working with children who have complex medical needs or special educational needs and disabilities to use music as a tool for learning and communication.

The Trustees have given due consideration to the Charity Commission's published guidance on public benefit when setting the charity's aims.

Jessie's Fund follows the Charity Governance Code, ensuring a high quality of governance, and is registered with the Fundraising Regulator.

## Contents

### Trustees' Report

Chair's welcome	2
2023–2024 Highlights	3
How you made a difference	4
Bringing music to specialist school settings	5
Giving children a musical voice in hospices and hospitals	6
Supporting families to access music therapy	8
Facilitating music-making with carers and professionals	9
Planting the seed for the power of music in other organisations	11
Jessie's Fund turns 30	12
Policies	13

### Financial and Legal Reports

Treasurer's report	16
Statement of Trustees' Responsibilities	18
Independent Examiner's report to the Trustees	18
Statement of Financial Activities	20
Balance Sheet	21
Notes to the financial statements	22
Legal and administrative information	36
Summary of Financial Activities	37



## Chair's welcome

Reflecting on his art, the great jazz musician Duke Ellington said "You've got to find some way of saying it without saying it." This sentiment perfectly describes the significance of music as a way of communicating with children and young people – many of them with life-limiting conditions – who cannot speak or communicate in other ways. Those are the people Jessie's Fund exists to serve, whether in hospices, hospitals, special schools or at home with their families. As you read this report on our activities in the year ending 31st March 2024, do keep this in mind.

When Lesley Schatzberger first had the idea of what became Jessie's Fund, there were no music therapists in children's hospices. Starting with Martin House, the children's hospice near York which cared for Jessie in her final days, Lesley started to put that right. And now, thanks to Jessie's Fund, 44 children's hospices have established music therapy posts and all have had access to instruments and staff training.

As regular supporters of the Fund will know, Lesley, while continuing in her role as Founder, has now stepped back from day-to-day running of the Fund, to be succeeded by Rebecca Ellis, now in her second, very successful, year in post. Throughout, Rebecca has been supported by the Board of Trustees which I have the privilege to chair. I've sat on the boards of many charitable organisations over the years, and chaired a few. But Jessie's Fund is, without exception, the loveliest. We are all conscious that we are responsible for guiding a charity which was born out of tragedy, and has grown into a national charity of enormous significance in the world of music therapy. And, recognising the need to renew and strengthen the board, we have, this year, recruited four new, young and energetic trustees who bring with them a wealth of experience and skills in fields such as business development, grant-making, communications and community music. So, as I look towards my final months as Chair, I do so with great confidence that my successor, whoever they may be, will be well supported by a lively, committed, and well-informed group of people who, along with our small dedicated staff, and our hard-working and talented musicians, will take Jessie's Fund from strength to strength.

Next year will be the year in which we mark the 30th anniversary since Jessie's Fund was created. We are planning to mark this significant achievement with a series of fundraising events, concerts etc (we were somewhat stymied in our efforts to mark the 25th anniversary by a global pandemic...). I hope you will be able to support us in whatever way works for you during this momentous year, so that we can go on developing our work with children and young people. And, to paraphrase the Duke, so that we can go on finding ways of saying it without saying it.

Steven Burkeman, Chair



## HIGHLIGHTS 2023-2024



27

Settings enjoyed a total of 151.5 workshops led by our musicians.

23

Grants for music therapy, instruments or creative music sessions awarded.

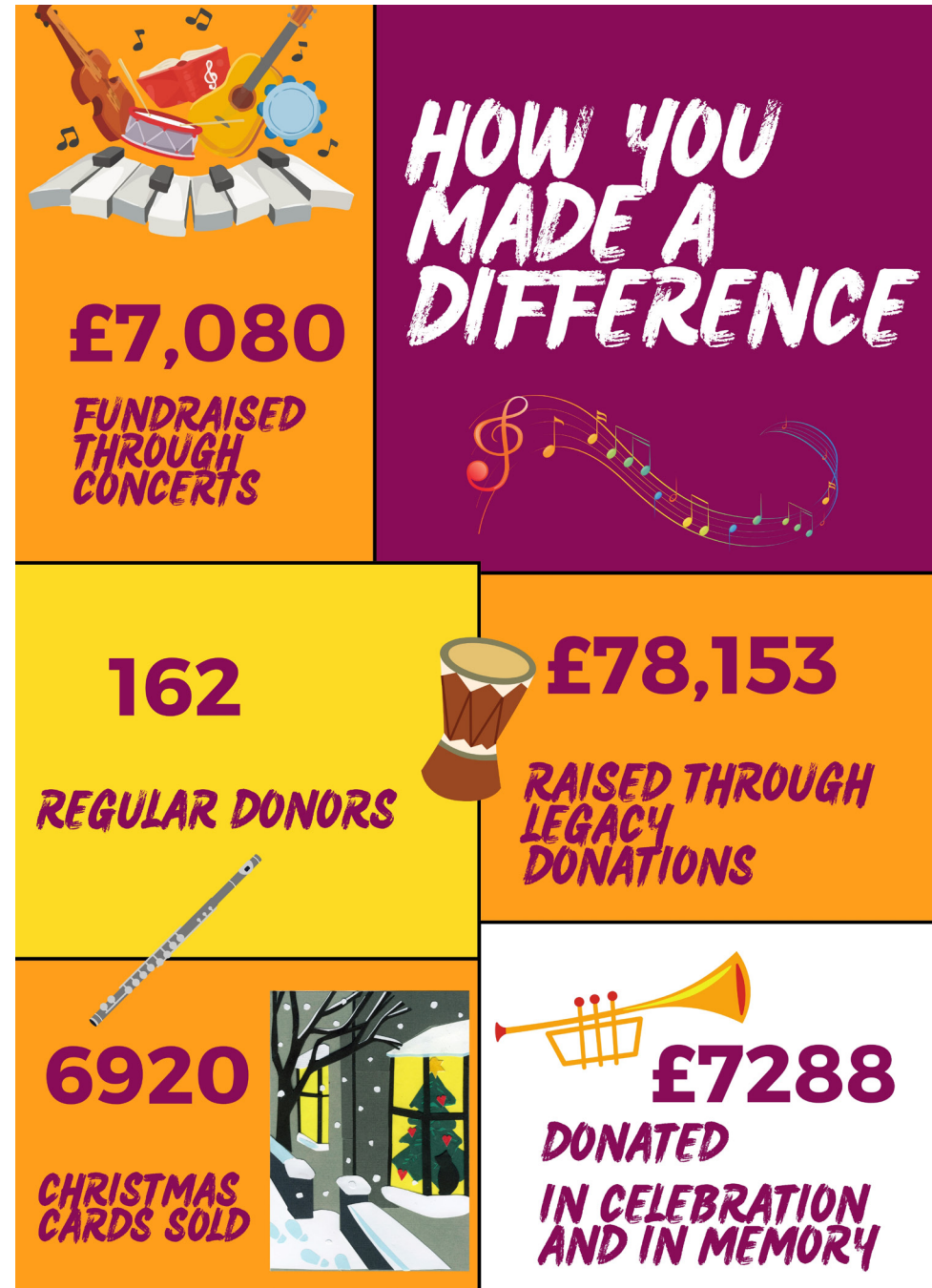
724

Music therapy sessions funded in the community for 69 children.

Number of attendees across our three training courses.

41





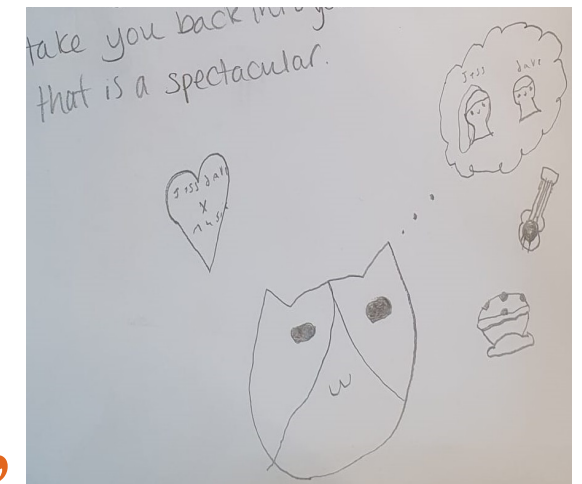
“This is the only session all the pupils stay in the room for.”

Bringing music to specialist school settings  
(All names in our stories have been changed for reasons of confidentiality)

This year we have led 151.5 days of creative music workshops across 27 different settings as part of our specialist schools programme and family music sessions. In total, we ran ten five-day projects, six one-year staff development projects, six short projects and five blocks of family music sessions.

One of our short projects was a collaboration between three schools in Merseyside and the local SKY Music hub as part of their celebrations for the Eurovision song contest. Our musicians led song-writing workshops with pupils and staff, which culminated in an uplifting sharing performance at the Shakespeare North Playhouse in Prescot. Some of our favourite songs were ‘Otters are outstanding (and so are we)’, ‘Our heroes’ and ‘Golden time and Owl babies’. At the end of the performance, pupils were asked to present what they had learnt by being part of the project. Abe confidently stood up and told us:

“ Through the workshops with Jess and Dave, I have learnt to use my imagination and put it into practice. Helvellyn class have teamed up to work together, to share trust with each other, to express our own opinions. We have collaborated our individual opinions and built them up. It’s like a lego house. Everybody’s opinion is like a lego block and when you stack them altogether it turns into a joint success. Music is powerful. It allows you to have a deja-vu moment when you listen to a song, it can take you back to your memories, and that is spectacular. ”



Parents and staff who attended on the day all shared their excitement and enjoyment at being part of the performance as well.



Our growing family music programme is also going from strength to strength, with two new projects in Gateshead and Bradford. We are grateful to the National Lottery Community Foundation for funding this work. Our musicians have been leading blocks of five or six sessions through Portage services and early years settings in Gateshead and Bradford. They have supported staff to run similar sessions themselves, as well as giving parents and carers ideas for songs and musical ideas that they can use at home. One child came with her aunt, who shared that through the sessions she noticed her niece becoming more aware of different sounds, and that her favourite instruments were the cabasa and the flute. We will continue to work with more families in these areas into the next year.

**“Having music therapists is so important to us, because they’re able to support the children in ways we didn’t know we could”**

**Giving children a musical voice in hospices and hospitals**

Jessie’s Fund has continued to support the establishment and growth of music therapy in children’s hospices and on hospital wards for children with complex medical needs and life-limiting illnesses. We do this through providing funding and training for staff.

We visited Zoe’s Place Baby Hospice, Middlesbrough, for staff training in July. Their Head of Care reached out asking for a session that would not only bring music back into the hospice, but also allow staff access to training that was not solely about the medical needs of the children in their care, and, in her words, was more fun! We led the staff through various activities that taught them about how to use their voice, guitar and keyboard techniques as well as how to create simple songs. Following the training, we also supported the hospice with some new instruments to help keep staff motivated and really engage the young children accessing the service.



“

**The ukulele has become a permanent feature, and a hello and goodbye song for every child. I really enjoyed the course, it was interactive and informative. This was a great introduction to music therapy which I’m sure will be valuable to Zoe’s Place, thank you.**

”



We also provided funding for 47 sessions of music therapy at Zoe’s Place Baby Hospice, Coventry. One child who benefited was Bea, who loves music and is an innately musical child. She attended music therapy on one of her first stays. This engaging and enjoyable experience allowed her to feel more comfortable in the new environment and to begin to interact with the adults who were looking after her. She enjoyed banging on the drum, strumming the ukulele and showing the therapist the vast amount of nursery rhymes she knew. She was able to independently choose her own nursery rhymes, and would then sing alongside, finishing the last words to sentences, eagerly anticipating her turn to do so. Bea struggles with the use of one of her arms and music therapy encourages her to use this more readily. As she is so motivated by the music, she will try hard to utilise both hands, facilitating increased strength and physical awareness. Music therapy sessions allow her the opportunity to participate equally in an activity alongside an adult, have her voice and choices heard, explore her social skills and ability to take turns, and be active and independent. She will smile and giggle throughout music therapy sessions, showing elements of her personality and how much music means to her. Zoe’s Place plan to continue the music therapy offering so even more children like Bea can communicate through music in the setting.

At York hospital, the music therapy role has grown over the last year to include more time on the wards, where the therapist is running group music therapy sessions and also supporting playworkers to develop their practice. Over 300 sessions have been delivered since the music therapy post started. Two Play Specialists shared that being part of the music therapy group creates really positive memories for children that otherwise might focus on the scary and more challenging aspects of their stay in hospital.

A grant given to Royal Belfast Hospital for sick children has allowed 15 children, young people and families on the wards to access creative music sessions, supported by the play team. Having seen the impact of music on the ward, they are hoping to continue to offer this provision, particularly for their long-term, complex patients.

“

**She really enjoyed the music and it has certainly lifted her mood today. During the session she smiled and was moving her hands and fingers to make music, this was a new response and we believe can be fully attributed to the music tailored to Emily's preferences.**

”

**“Life for us as a family is changing since we have discovered music therapy.”**

**Supporting families to access music therapy in the community**

This year we have funded or part-funded music therapy for 69 children, for a total of 724 music therapy sessions, an increase of 8 children and 186 sessions from last year. We have seen a surge in demand for our Individual Grants, likely due to the impact of cost-of-living increases on families with children with additional needs, but also improved awareness of the power of music therapy to help these children. Because of this, we made the decision to fundraise for these crucial grants as the focus of our Big Give Christmas campaign, raising £12,906.25, which has already funded around 50 sessions of music therapy in the community for children like Ryan.

We were able to give Ryan a grant to continue access to regular music therapy sessions, which have allowed him to develop his social, communication, regulation and cognitive skills this year whilst experiencing the pleasure of feeling connected to another. This year has seen significant developments in his focus, creativity, planning and vocal control.



Ryan's parents shared with us what they thought he would say about why music therapy is important to him:

“

**Imagine a place where you feel safe, inspired, understood, a place where you can explore, and that exploration is seen, and supported into an opportunity to develop and stretch at every turn. Where when you feel tired, that is understood, where your every creative thought, every vocal experimentation is met and enhanced, and where every joke is enjoyed and shared. Imagine that place. That place for me is music therapy. It is a place where I shine, and where my parents can see not only my potential, but my growth in that very moment, and, I can see it and feel it. That is what music therapy is to me.**

”

It is important to us to be able to offer a safe music therapy space to children, young people and families who would not otherwise be able to access it, possibly due to cost, or because they are not currently able to access the appropriate school or hospice setting. We will be using our Big Give campaign again this year to fundraise for these vital sessions.

**“I can be a musician!”**

**Facilitating music-making with carers and professionals**



Our training courses in York and London returned for two in-person days for the first time since the pandemic. 33 people attended across both courses, with 10 attendees from children's hospice services and 11 from specialist school settings. One member of staff from a hospice told us: "I was astonished that I was able to leave the course knowing how to play the ukulele/guitar (albeit only 2 or 3 chords, but we all have to start somewhere). I had always believed that learning how to play musical instruments to be difficult and complicated, but the teachers dispelled this and made it super simple. This has given me the motivation to want to learn more to improve my personal musical skills for my music sessions with the children and young people I work with."

One place was given to Haringey music service for one of their tutors, as a thank you for lending us instruments to use across the two days. One music student interested in a career in music therapy joined us. Four joined from hospital/outreach settings with the remaining two being music teachers/leaders. The remaining two participants were a parent and a grandparent of children with complex needs, who was immediately able to put their new skills and confidence into use, playing piano to elicit smiles and giggles from their granddaughter the next weekend. It was wonderful to have such a mix of attendees and to be able to share experiences from across settings and sectors, including in the home.

**“ The course has opened up so many opportunities for me to work with the kids at school in a way that is more meaningful for them and expressive. I feel more confident to step back a little more and allow the space for more to happen as I feel I better understand expectations and purpose. ”**

We also started the second year of our creative music residency with the Royal Northern College of Music, with eight new students joining us for a training weekend in York in November, from a shortlist of 22 applications. We were pleased to see applicants from a wider range of courses and instrumental specialties, including a pop vocalist and a composer/percussionist. The students will complete their placements in four settings across Greater Manchester.

**“ I found it really interesting how much you can build connection. For me music is related to health and music is related to the human experience so I know that this weekend will be present in my journey ahead. ”**

**“The children are gaining an opportunity to express themselves that is not available through other types of provision.”**

**Planting the seed for the power of music in other organisations**

23 grants to organisations have been awarded this year, including to four hospices, fourteen school settings and five organisations supporting children and young people with SEND and their families. 20 of these grants supported music therapy provision, two helped to provide instruments for music therapy and one grant was for a creative music project at a playgroup for children with SEND.

One school has seen the music therapy provision elicit a transformation in children who struggle to communicate. These children can now to interact and listen and are able to reciprocate and take turns through the use of sounds and phrases in music. The assistant head told us “our young people who have accessed music therapy through the grant are always keen to go to sessions and participate with joy, honesty and individuality. Staff who support children to attend sessions have been amazed at the relationships and trust built so quickly with the therapist. They are learning ways to interact with the child at other times during the week.” The school have since appointed a dedicated member of staff to lead and teach music, as well as some support to ensure that pupils get the chance to perform on different stages and in different ways.

**“ I want to be a music teacher now! ”**





# Jessie's Fund turns 30

It has been a full year of projects and we hope to see the work continue to grow in 2024/25, as we look towards our 30th anniversary in 2025. We are planning a range of events including a conference at the Royal Northern College of Music and the return of our Bike Ride fundraiser.

Our partnership with the RNCM will continue with placements for the second cohort of students, as well as recruiting and training for the third year. We will continue to build relationships with new schools, and have plans for at least five one-year staff development projects in previous settings.

We will increase access to music therapy through our grants as well as promoting the inclusion of music therapy provision in Education, Health and Care Plans. We aim to establish at least one further hospital music therapy post as well as offering ongoing support to ensure music therapy remains a key part of children's hospice care. Our training course will run in-person again in York and London, with further staff training delivered to music hubs and specialist school settings.

We are grateful to the following organisations for their donations:

29th May 1961 Charitable Trust	Samuel Gardner Memorial Trust
Abbey House Settlement	Sylvia and Colin Shepherd Charitable Trust
Barbara Ward Charitable Trust	The ARN Foundation
Arimathea Charitable Trust	The Arts Society
Arlish and Chambers Charity	The Barry Anthony Newsam Charitable Trust
D'oyly Carte Charitable Trust	The Hedley Denton Charitable Trust
Edward Cadbury Charitable Trust	The Jack Brunton Charitable Trust
Emily Weircroft Charitable Trust	The Rhododendron Trust
Garfield Weston Foundation	The Sterry Family Foundation
HBJ Trust	The Vandervell Foundation
Holbeck Charitable Trust	The Victoria Wood Foundation
Martyn Donaldson Music Trust	Wades Charity
National Lottery Awards for All	Warburtons Community Grants
Park Hill Trust	Wingate Foundation
Plastow Family Charitable Trust	Wise Music Foundation
Postlethwaite Music Foundation	Yorkshire Building Society

# Policies

## Governing document

Jessie's Fund's governing document is a Deed of Trust authorised by the Charity Commission on 25 March 1995 and amended on 15 February 2013 and on 30 June 2021.

## Organisational structure

The Board of Trustees has overall responsibility for the charity. The minimum number of Trustees as set out in our governing document is four, each engaged for a five-year term of office (changed from two-year terms by a Supplementary Deed of Trust dated 30 June 2021). On 31 March 2023 there were eleven Trustees. Trustees may offer themselves for re-election for a further term on completion of their first term of office. There is an additional Advisory Board of two people and an Honorary Treasurer. The daily running of the charity is coordinated by the Executive Director, Director of Learning, the Administrator and the Projects Assistant.

## Appointment and induction of trustees

Appointment of trustees is by advertisement or invitation: emphasis is placed on relevant expertise. Our trustees' areas of expertise include:

- ♦ medicine
- ♦ mental health
- ♦ disability
- ♦ music
- ♦ law
- ♦ voluntary sector
- ♦ fundraising

Newly appointed trustees are given induction packs, including a copy of our governing document and a guide to the responsibilities of trustees. They also spend time being thoroughly briefed by the Director. They are shown videos of our work with children and invited to observe, and even take part in, our music-making training courses.

## Risk management

The Trustees have considered the risks affecting the organisation, particularly those concerning the flow of funds to meet the programme and the importance of key persons. The Trustees have a risk management strategy which comprises:

- ♦ an annual review of the risks and uncertainties that the charity faces;
- ♦ the establishment of policies, systems and procedures to mitigate those risks identified in the annual review;
- ♦ the implementation of procedures designed to minimise or manage any potential impact on the charity should those risks materialise;
- ♦ a reserves policy.



Reserves policy

It is the Trustees’ policy to designate funds to cover planned commitments for future charitable activities. The charity is dependent on grants, donations and fundraising events for its income, which is subject to fluctuating economic circumstances. To ensure that Jessie’s Fund will be able to implement its planned commitments, we maintain an emergency operating reserve to meet core operating expenses in adverse financial conditions.

The Trustees have reviewed this policy and the required commitments in the light of the charity’s current and forecast programme, and have decided that the appropriate range for the emergency operating reserve is £45,000 to £65,000. The lower figure would be sufficient to enable the implementation of charitable projects as designated for approximately one year in the event of a 50% drop in forecast income. This would allow time for reorganisation and re-establishment of income streams without impact on the planned programme. The higher figure would provide insurance against a sharper drop in income or a longer recovery period.

The emergency operating reserve also provides cover for unforeseen operational emergencies, such as additional staff in the event of long-term sickness absence of a member of the charity’s small administrative team. In addition to the emergency operating reserve, the charity needs to fund working capital and to have enough funds available to expand its overall programme of work.

At 31 March 2024, the unrestricted, undesignated reserves amounted to £75,520 which includes our emergency operating reserve.

As the world continues to face uncertainty and funding for the charitable sector is volatile, we are fortunate to hold reserves in excess of our usual policy to ensure the continued provision of our services.

Grant-making policy

Jessie’s Fund has an ongoing commitment to award grants to projects which meet our criteria as set out in our statement of objectives. We have adopted the following process for awarding grants:

- ♦ an annual budget is allocated for grants;
- ♦ all requests for grants of over £1,000 are considered by trustees at three meetings per year;
- ♦ trustees have delegated responsibility for approval of grants below £1,000 to the administrative team (Executive Director and Administrator) where appropriate;
- ♦ where a grant applicant is unsuccessful we endeavour to provide constructive and helpful feedback.



Financial and Legal Reports  
for the year ended 31 March 2024

Treasurer’s report	16
Statement of Trustees’ responsibilities	18
Independent Examiner’s report to the Trustees	18
Statement of Financial Activities	20
Balance Sheet	21
Notes to the financial statements	22
Legal and administrative information	36
Summary of Financial Activities	37

## Treasurer's Report

Jessie's Fund's finances remain healthy despite the factors currently facing the sector. The charity continues providing and supporting music therapy, music therapists in children's hospices and hospitals, and the Jessie's Fund programme in specialist school settings.

We closed the year with a deficit of £14,068. Our total reserves as of 31st March 2024 stand at £267,837, of which £42,631 is restricted for specific projects. We have designated £149,686 for our committed financial activities in the new financial year. These include projects and programmes of work with children in specialist school settings and children's hospitals and hospices, as well as grants for individuals. Our unrestricted undesignated reserves of £75,520 include our emergency operating reserve (for policy details see page 14).

Fundraising activities and trading have raised an amazing £35,102, with investments bringing in a further £8,999.

Jessie's Fund relies on income from voluntary donations and on grants from trust funds. Friends of Jessie's Fund and many other supporters have contributed £82,441 over the year with Gift Aid tax refund contributions bringing an additional £8,483. Grant income from trust funds was higher this year than last at £83,062, and generous legacies have provided the fund with a further £78,153.

We have been able to maintain last year's level of expenditure on grants and have awarded nearly £86,138 to other organisations and individuals.

Expenditure on the Jessie's Fund programme in specialist schools increased this year, whilst expenditure on music therapy in children's hospitals has remained consistent.

Jessie's Fund is run by a small York-based team whose achievements are extraordinary and whose commitment is apparent in every aspect of their work. They are ably supported by the board of trustees who bring added expertise and are always ready to give advice and guidance.

Sally Brabyn  
Honorary Treasurer

October 2024



## Statement of Trustees' Responsibilities

The Trustees are responsible for preparing the Trustees' Report and the financial statements in accordance with applicable law and United Kingdom Accounting Standards. The law applicable to charities in England and Wales requires the Trustees to prepare financial statements for each financial year which give a true and fair view of the state of affairs of the Charity and of the incoming resources and application of resources of the Charity for that period. In preparing these financial statements, the Trustees are required to:

- ♦ select suitable accounting policies and apply them consistently;
- ♦ observe the methods and principles of the Charities SORP;
- ♦ make judgements and estimates that are reasonable and prudent;
- ♦ state whether applicable accounting standards have been followed, subject to any departures disclosed and explained in the financial statements;
- ♦ prepare the financial statements on a going concern basis unless it is inappropriate to presume that the charity will continue in operation.

The Trustees are responsible for maintaining proper accounting records which disclose with reasonable accuracy at any time the financial position of the Charity and to enable them to ensure that the financial statements comply with the Charities Act 2011. They are also responsible for safeguarding the assets of the Charity and hence for taking reasonable steps for the prevention and detection of fraud and other irregularities. The Trustees are responsible for the maintenance and integrity of the Charity and financial information included on the charity's website.

## Independent Examiner's Report to the Trustees of Jessie's Fund

I report to the trustees on my examination of the accounts of Jessie's Fund for the year ended 31 March 2024, which are set out on pages 20 to 35.

This report is made solely to the Charity's Trustees, as a body, in accordance with Section 154 of the Charities Act 2011. My independent examination work has been undertaken so that I might state to the Charity's Trustees those matters I am required to state to them in an Independent Examiner's Report and for no other purpose. To the fullest extent permitted by law, I do not accept or assume responsibility to anyone other than the Charity and the Charity's Trustees as a body, for my independent examination work, for this report, or for the opinions I have formed.

## Responsibilities and basis of report

As the charity trustees you are responsible for the preparation of the accounts in accordance with the requirements of the Charities Act 2011 ('the Act'). I report in respect of my examination of the Trust's accounts carried out under section 145 of the 2011 Act and in carrying out my examination I have followed all the applicable Directions given by the Charity Commission under section 145(5)(b) of the Act.

## Independent Examiner's Statement

Since the Trust's gross income exceeded £250,000 your examiner must be a member of a body listed in section 145 of the 2011 Act. I confirm that I am qualified to undertake the examination because I am member of the Institute of Chartered Accountants in England and Wales, which is one of the listed bodies.

I have completed my examination. I confirm that no material matters have come to my attention in connection with the examination giving me cause to believe that in any material respect:

1. accounting records were not kept in respect of the Trust as required by section 130 of the Act; or
2. the accounts do not accord with those records; or
3. the accounts do not comply with the applicable requirements concerning the form and content of accounts set out in the Charities (Accounts and Reports) Regulations 2008 other than any requirement that the accounts give a true and fair view which is not a matter considered as part of an independent examination; or
4. the accounts have not been prepared in accordance with the methods and principles of the Statement of Recommended Practice for accounting and reporting by charities applicable to charities preparing their accounts in accordance with the Financial Reporting Standard applicable in the UK and Republic of Ireland (FRS 102).

I have no concerns and have come across no other matters in connection with the examination to which attention should be drawn in this report in order to enable a proper understanding of the accounts to be reached.

A. C. Rodaway, FCA, BFP, DChA  
HPH, Chartered Accountants  
54 Bootham, York, YO30 7XZ

31st October 2024



## Statement of Financial Activities for the year ended 31 March 2024

	Note	2024			2023	
		£	£	£	£	£
Income from:		Unrestricted	Restricted	Total	Total	
Donations and legacies	2a)	172,567	79,572	252,139	214,328	
Other trading activities	2b)	14,124	-	14,124	13,986	
Investment	2c)	8,999	-	8,999	4,296	
Charitable activities	2d)	20,978	-	20,978	20,349	
<b>Total income</b>		<b>216,668</b>	<b>79,572</b>	<b>296,240</b>	252,959	
<b>Expenditure on:</b>						
Raising funds	3	22,989	-	22,989	20,973	
Charitable activities	3	225,536	61,783	287,319	289,731	
<b>Total expenditure</b>		<b>248,525</b>	<b>61,783</b>	<b>310,308</b>	310,704	
<b>Net income for the year</b>		(31,857)	17,789	(14,068)	(57,745)	
<b>Funds brought forward at 1 April 2023</b>		257,063	24,842	281,905	339,650	
<b>Funds carried forward at 31 March 2024</b>		<b>225,206</b>	<b>42,631</b>	<b>267,837</b>	281,905	

## Balance Sheet as at 31 March 2024

	Note	£ 2024	£ 2023
<b>Fixed Assets</b>	8	<b>2,003</b>	1,062
<b>Current Assets</b>			
Stock	9	2,824	2,007
Debtors	10	14,884	6,386
Cash at bank and in hand		262,813	291,858
		<b>280,521</b>	300,251
<b>Creditors: amounts falling due within one year</b>			
Accruals and deferred income	11	14,687	19,408
<b>Net Current Assets</b>		<b>265,834</b>	280,843
<b>Total assets less current liabilities</b>		<b>267,837</b>	281,905
<b>Total Net Assets</b>		<b>267,837</b>	281,905
<b>The Funds of the Charity</b>			
Unrestricted - designated	14	149,686	157,598
Unrestricted - undesignated		75,520	99,465
Restricted	13	42,631	24,842
	12	<b>267,837</b>	281,905

Approved by the Board of Trustees on 31st October 2024 and signed on their behalf by:

Steven Burkeman (Chair)

Nancy Maguire (Co Vice Chair)

# Notes to the financial statements for the year ended 31 March 2024

## 1 Accounting policies

### a) Basis of Accounting

The financial statements have been prepared in accordance with the Statement of Recommended Practice: Accounting and Reporting by Charities preparing their accounts in accordance with the Financial Reporting Standard applicable in the UK and Republic of Ireland (FRS 102) (effective 1 January 2019), and the Financial Reporting Standard applicable in the United Kingdom and Republic of Ireland (FRS 102) and the Charities Act 2011.

The financial statements have been prepared to give a 'true and fair' view and have departed from the Charities (Accounts and Reports) Regulations 2008 only to the extent required to provide a 'true and fair view'. This departure has involved following the relevant version of the Statement of Recommended Practice applicable to charities preparing their accounts in accordance with the Financial Reporting Standard applicable in the UK and Republic of Ireland (FRS 102) rather than the Accounting and Reporting by Charities: Statement of Recommended Practice effective from 1 April 2005 which has since been withdrawn.

The Trustees have a reasonable expectation that the Charity has adequate resources to continue in existence for the foreseeable future. They continue to believe the going concern basis of accounting is appropriate in preparing the financial statements.

Jessie's Fund meets the definition of a public benefit entity under FRS 102. Assets and liabilities are initially recognised at historical cost or transaction value unless otherwise stated in the relevant accounting policy note(s).

### b) Depreciation policy

Depreciation is provided on all tangible fixed assets in use at rates calculated to write off the cost or valuation, less estimated residual value, of each asset over its expected useful life, as follows:

Office equipment – at 25% reducing balance  
Computers – at 25% reducing balance  
Music equipment – at 25% reducing balance

We do not capitalise any item under £150 value on purchase.

### c) Stocks and work in progress

Stocks are valued at the lower of cost or net realisable value.

### d) Debtors

Trade and other debtors are recognised at the settlement amount due after any trade discount offered. Prepayments are valued at the amount prepaid after taking account of any trade discounts due.

### e) Cash at bank

Cash at bank and cash in hand includes cash and any short term deposit accounts with a maturity of three months or less from the opening date.

### f) Creditors and provisions

Creditors and provisions are recognised where the charity has a present obligation resulting from a past event that will probably result in the transfer of funds to a third party and the amount due to settle the obligation can be measured or estimated reliably. Creditors and provisions are normally recognised at their settlement amount after allowing for any trade discounts due.

### g) Income

Interest receivable is accounted for on an accruals basis.  
Gift Aid is included based on amounts recoverable at the accounting date.

Donated services are only included in incoming resources where another party is bearing the financial cost of the resources supplied and the benefit is quantifiable, receivable and material. Donated services are valued at the lower of the cost borne by the party bearing the cost and a reasonable estimate of the value of the donation to the Charity.

A legacy is regarded as received when it has become reasonably certain that the legacy will be received and the value of the incoming resource can be measured with sufficient reliability.

Voluntary income arising from events, principally sponsorship, is recognised in the period which the event takes place.

Grant income is recognised when the Charity is entitled to receipt.

Other income is accounted for in the year in which it was received.

h) Funds

The charity’s funds consist of restricted and unrestricted amounts as shown in the Statements of Financial Activities.

Unrestricted funds may be used at the trustees’ discretion in furtherance of the charity’s objects. Restricted funds may only be used in accordance with the donors’ wishes as shown in note 14.

i) Expenditure

Grants payable are accounted for in the year in which the grant was paid. All expenses are accounted for on an accruals basis. Direct costs are allocated to the key strategic areas of activity.

- Costs of generating funds are those costs incurred in attracting voluntary income, and those incurred in trading activities which raise funds.
- Charitable activities are those activities which are undertaken to meet our charitable objectives.
- Support costs include management functions and have been allocated to key strategic areas of activity on a basis consistent with the use of resources.
- Governance costs include those incurred in the governance of the charity which relate to the strategic running of the charity and its assets, and are primarily concerned with constitutional and statutory requirements. These are distinct from costs associated with fundraising or charitable activity.

j) Taxation

Jessie’s Fund is a registered charity and is generally exempt from tax on income and gains. The charity is not registered for Value Added Tax.

k) Pension scheme

The charity contributes to a defined contribution pension scheme for its employees. Pension costs are charged to the SOFA and represent the contributions payable by the charity in the year.

2 Income from:

a) Donations and legacies

	2024			2023
	Unrestricted	Restricted	Total	Total
	£	£	£	£
Friends’ subscriptions	19,073	-	19,073	19,045
Miscellaneous donations	48,676	7,404	56,080	75,370
In Celebration & In Memoriam donations	7,288	-	7,288	11,923
Legacies	78,153	-	78,153	13,143
Grants from Trusts and Statutory Grants	10,894	72,168	83,062	80,948
Gift Aid tax refunds	8,483	-	8,483	13,899
<b>Total income from donations and legacies</b>	<b>172,567</b>	<b>79,572</b>	<b>252,139</b>	<b>214,328</b>

The Charity also benefits from the involvement and enthusiastic support of a small number of volunteers who help with administration, on an ad hoc basis. In accordance with Charities SORP, the economic contribution of general volunteers is not recognised in the accounts.

b) Other trading activities

Fundraising events	8,867	-	8,867	10,695
Merchandise income	5,257	-	5,257	3,291
	<b>14,124</b>	<b>-</b>	<b>14,124</b>	<b>13,986</b>

c) Investment income

Interest received on cash deposits	8,999	-	8,999	4,296
------------------------------------	-------	---	-------	-------

d) Charitable activities

Jessie’s Fund programme in Special Schools	12,580	-	12,580	13,220
Training courses	8,398	-	8,398	7,129
	<b>20,978</b>	<b>-</b>	<b>20,978</b>	<b>20,349</b>

<b>Total income</b>	<b>216,668</b>	<b>79,572</b>	<b>296,240</b>	<b>252,959</b>
---------------------	----------------	---------------	----------------	----------------

In 2023 the only restricted income was £61,593 in donations and legacies.



### 3 Expenditure on:

#### Expenditure on:

	Direct activity	Grant funding	Support	Total	Total
Charitable activities	undertaken	of activities	costs	2024	2023
	£	£	£	£	£
Music therapy / creative music projects/research	-	33,630	8,109	<b>41,739</b>	56,458
Music therapists in children's hospices	-	22,080	5,947	<b>28,027</b>	29,727
Music therapy - individuals	-	30,428	10,813	<b>41,242</b>	30,361
Jessie's Fund programme in Special Schools	109,905	-	10,273	<b>120,178</b>	106,245
Hospitals creative project	2,012	-	-	<b>2,012</b>	-
MT in hospitals training and general expenses	11,492	-	10,813	<b>22,305</b>	33,233
Instruments	379	-	-	<b>379</b>	2,051
Governance	-	-	13,980	<b>13,980</b>	15,762
Training courses and workshops	9,348	-	8,109	<b>17,457</b>	15,894
	<b>133,136</b>	<b>86,138</b>	<b>68,044</b>	<b>287,319</b>	289,731
<b>Raising funds</b>					
Fundraising events	1,738	-	17,080	<b>18,818</b>	17,333
Fundraising trading	2,273	-	1,898	<b>4,171</b>	3,640
	<b>4,011</b>	-	<b>18,978</b>	<b>22,989</b>	20,973
<b>Total expenditure</b>	<b>137,147</b>	<b>86,138</b>	<b>87,022</b>	<b>310,308</b>	310,704

Charitable activities totalling £61,783 (2023: £73,055) were allocated to restricted funds.

#### Analysis of support costs

	Charitable	Costs of	Total	Total
	activities	raising funds	2024	2023
	£	£	£	£
Staffing	52,134	17,766	<b>69,900</b>	61,411
Information resources & staff training	-	878	<b>878</b>	751
Trustee expenses	1,949	-	<b>1,949</b>	1,251
Accountancy and legal fees	3,198	-	<b>3,198</b>	3,120
Other support costs	10,428	-	<b>10,428</b>	13,968
Depreciation and loss on disposal	335	334	<b>669</b>	612
	<b>68,044</b>	<b>18,978</b>	<b>87,022</b>	81,113

4 Direct charitable grants

Direct grants, for music therapy unless otherwise stated, were made from unrestricted funds as follows:

	£
Ainslie Wood Primary School	1,440
Autism Support Kilkeel	1,500
Bluebell Hill School	1,620
Demelza	7,400
Dravet Syndrome UK (instruments)	1,000
Drummond School	2,100
Elizabeth Selby Infants School	2,250
Emosi Therapeutic Centre (instruments)	1,000
Inverkeithing High School	1,440
Keech Hospice Care	5,000
Laurencekirk School	1,500
Martin House Children’s Hospice	5,000
Marlow Opportunity Playgroup (creative music)	1,850
Millstead Primary School	1,150
Oaklands School	1,800
Orchard Brae School	3,000
Redhall School	2,200
Sound Waves South West	2,000
South Acton Nursery School and Children’s Centre	1,860
Springwood Primary School	2,120
West Blatchington Primary School	1,800
Ysgol Plas Brondyffryn	2,000
Zoe’s Place Baby Hospice, Coventry	4,680
<b>Total direct grants</b>	<b>55,710</b>

5 Staff Costs

	2024	2023
	£	£
Gross salaries and wages	62,913	15,240
Employer’s pension contributions	2,517	610
Other staff/human resources costs	3,269	45,561
	<b>68,699</b>	<b>61,411</b>

Staff that were previously contracted out have been employed by the charity since January 2023.

The average number of employees in the year was 4 (2023 - 1). There were no employees with emoluments above £60,000 in the year (2023 - none)

The key management personnel of the charity comprise the Trustees, the Executive Director and Director of Learning. The total employee benefits of the key management personnel were £39,355 (2023 - £10,535).

6 Trustees

No Trustee has received any remuneration during the year. Trustees’ travel and other expenses were paid or reimbursed to the trustees, amounting in the year to £1,949.61 (Expenses reimbursed to the trustees in 2023: £1,250.71)

During the year a total of £1,532 (2023 - £1,561) was donated to the charity by related parties, including Trustees.

7 Audit and accountancy fees

	2024	2023
	£	£
Independent Examination	3,198	3,120

8 Tangible fixed assets

	Office equipment	Computers	Music equipment	Total
	£	£	£	£
Cost				
To 1 April 2023	1,073	4,683	2,680	8,436
Additions	-	1,610	-	1,610
Disposals	-	-	-	-
At 31 March 2024	1,073	6,293	2,680	10,046
Depreciation				
To 1 April 2022	943	3,821	2,610	7,374
Charge for the year	33	618	18	669
Eliminated on disposal	-	-	-	-
At 31 March 2024	976	4,439	2,628	8,043
Net Book Value				
At 31 March 2024	97	1,854	52	2,003
At 31 March 2023	130	862	70	1,062

9 Stock

	2024	2023
	£	£
Goods for resale	2,824	2,007

10 Debtors

	2024	2023
	£	£
Prepayments and accrued income	14,884	6,386

11 Creditors

	2024	2023
	£	£
Amounts falling due within one year		
Accruals and deferred income	12,646	16,537
Taxation and social security	2,041	2,871
	14,687	19,408
Deferred income:		
Deferred income at 1 April	600	-
Resources deferred in the year	-	600
Released from the previous year	(600)	-
Deferred income at 31 March	-	600

At the balance sheet date the Charity was holding funds received in advance of providing services to users, which is fully release in the following financial year.



## 12 Analysis of the charity's assets by fund

	Restricted	Unrestricted		Total
		Designated	Undesignated	
Current year	£	£	£	£
Fixed Assets	75	-	1,928	<b>2,003</b>
Current Assets	42,556	149,686	88,279	<b>280,521</b>
	42,631	149,686	90,207	<b>282,524</b>
Creditors: amounts falling due within one year	-	-	(14,687)	<b>(14,687)</b>
<b>Total Net Assets</b>	<b>42,631</b>	<b>149,686</b>	<b>75,520</b>	<b>267,837</b>

	Restricted	Unrestricted		Total
		Designated	Undesignated	
Comparative year	£	£	£	£
Fixed Assets	98	-	964	1,062
Current Assets	24,744	157,598	117,909	300,251
	24,842	157,598	118,873	301,313
Creditors: amounts falling due within one year	-	-	(19,408)	(19,408)
<b>Total Net Assets</b>	<b>24,842</b>	<b>157,598</b>	<b>99,465</b>	<b>281,905</b>

## 13 Restricted funds 2023-2024

		Balance at 1.4.2023	Income	Expenditure	Balance at 31.3.2024
		£	£	£	£
Source of funds	Purpose				
Anonymous donation	Music-making training course	1,132	4,000	5,132	-
Anonymous donation	Newsletter mailing	-	178	178	-
Good Gifts Catalogue	Individual music therapy sessions	941	588	941	<b>588</b>
Leeds Building Society Charitable Trust	Equipment	26	-	7	<b>19</b>
Lynn Foundation	Equipment	67	-	17	<b>50</b>
The HBJ Trust	Music Therapy (York Hospital)	5,796	11,000	11,492	<b>5,304</b>
ARN Foundation	Schools' programme	1,228	6,000	5,865	<b>1,363</b>
Joyce Fletcher Charitable Trust	Schools' programme	2,000	-	-	<b>2,000</b>
Big Give Christmas Challenge	Schools' programme	5,076	-	5,076	-
Big Give Christmas Challenge	Individual music therapy sessions	-	11,700	10,105	<b>1,595</b>
D'Oyly Carte Charitable Trust	Schools' programme	3,000	-	2,290	<b>710</b>
The Feoffees of St Michael's Spurriergate	Schools' programme	5,576	-	4,212	<b>1,364</b>
The Postlethwaite Music Foundation	Individual music therapy sessions	-	2,000	2,000	-
Wise Music Foundation	Schools' programme	-	2,517	-	<b>2,517</b>
The Holbeck Charitable Trust	Schools' programme	-	3,000	-	<b>3,000</b>
Garfield Weston Foundation	Schools' programme	-	10,000	7,817	<b>2,183</b>
The Samuel Gardner Memorial Trust	Schools' programme	-	1,500	-	<b>1,500</b>
The Arts Society	Schools' programme	-	2,600	2,150	<b>450</b>
Jack Brunton Charitable Trust	Schools' programme	-	3,000	-	<b>3,000</b>
Barbara Ward Children's Foundation	Schools' programme	-	5,000	-	<b>5,000</b>
National Lottery Community Fund	Family learning	-	9,400	2,047	<b>7,353</b>
Chartered Institute of Fundraising	Conference bursary	-	429	429	-
Warbuton's Community Grants	Family learning	-	400	57	<b>343</b>
Wade's Charity	Leeds Hospitals creative music	-	2,000	1,968	<b>32</b>
The Harold Hyam Wingate Foundation	Schools' programme	-	2,260	-	<b>2,260</b>
Edward Cadbury Charitable Trust	Schools' programme	-	2,000	-	<b>2,000</b>
		<b>24,842</b>	<b>79,572</b>	<b>61,783</b>	<b>42,631</b>

**Restricted Funds, 2022 - 2023**

Source of funds	Purpose	Balance £	Income £	Expenditure £	Balance £
Anonymous donation	Music-making training course	2,651	4,500	6,019	1,132
Anonymous donation	Hospital music therapy	300	-	300	-
Anonymous donation	Hospital music therapy	3,700	-	3,700	-
Anonymous donation	Newsletter mailing	-	573	573	-
Good Gifts Catalogue	Individual music therapy sessions	-	941	-	941
Leeds Building Society Charitable Trust	Equipment	34	-	8	26
Lynn Foundation	Equipment	89	-	22	67
Rotary Club of York Vikings	Music at Hob Moor Oaks, York	500	-	500	-
The HBJ Trust	Music Therapy (York Hospital)	4,730	10,000	8,934	5,796
ARN Foundation	Schools' programme	4,232	5,995	8,999	1,228
Joyce Fletcher Charitable Trust	Schools' programme	2,000	2,000	2,000	2,000
Shears Foundation	Hospital music therapy, Newcastle	2,266	-	2,266	-
Big Give Christmas Challenge (incorporating Victoria Wood and Reed Foundations)	Schools' programme	8,962	15,962	19,848	5,076
Youth Music	Schools' programme	1,321	4,275	5,596	-
John Horniman's Children's Trust	Schools' programme	519	-	519	-
Barbour Foundation	Hospital music therapy, Newcastle	5,000	-	5,000	-
D'Oyly Carte Charitable Trust	Schools' programme	-	3,000	-	3,000
Sir James Knott Trust	Hospital music therapy, Newcastle	-	5,000	5,000	-
The Feoffees of St Michael's Spurriergate	Schools' programme	-	7,347	1,771	5,576
The Postlethwaite Music Foundation	Individual music therapy sessions	-	2,000	2,000	-
		<b>36,304</b>	<b>61,593</b>	<b>73,055</b>	<b>24,842</b>

**14 Designated funds**

To 31 March 2024 unless otherwise stated

Special Schools creative music programme (to 31 July 2024)

Music-Making for Special Children Courses

Music therapy with individuals

Music therapy in children's hospices

Music therapy in children's hospitals

Balance at 1.4.2023 £	Expenditure £	Transfers £	Balance at 31.3.2024 £
107,063	82,567	77,389	<b>101,885</b>
2,000	4,216	4,266	<b>2,050</b>
19,219	28,245	24,026	<b>15,000</b>
10,465	22,080	23,515	<b>12,080</b>
18,671	-	-	<b>18,671</b>
<b>157,598</b>	<b>137,108</b>	<b>129,196</b>	<b>149,686</b>

**Designated Funds, 2022 - 2023**

Special Schools creative music programme (to 31 July 2024)

Music-Making for Special Children Courses

Music therapy with individuals

Music therapy in children's hospices

Martin House Children's Hospice research project

Music therapy in children's hospitals

Balance at 1.4.2022 £	Expenditure £	Transfers £	Balance at 31.3.2023 £
109,362	58,178	55,879	107,063
9,314	2,748	(4,566)	2,000
22,181	20,858	17,896	19,219
7,500	-	3,145	10,645
2,000	2,000	-	-
20,318	1,647	-	18,671
<b>170,675</b>	<b>85,431</b>	<b>72,354</b>	<b>157,598</b>

Transfers from unrestricted, designated funds unless stated otherwise.

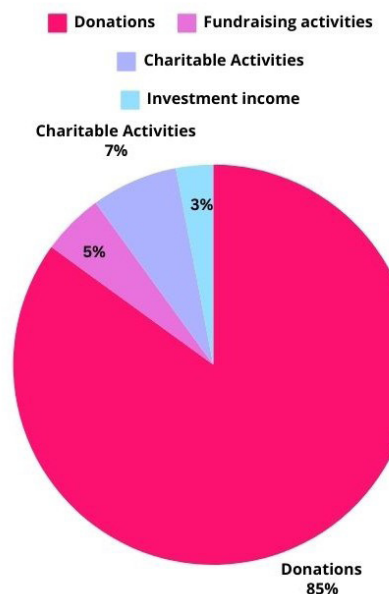
## Legal and administrative information

Constitution	Rules adopted 25 March 1995, amended 15 February 2013 and 30 June 2021
Charity Number	Registered Charity No. 1045731
Patrons	Maxine Peake; Trevor Pinnock CBE
Trustees	Steven Burkeman (Chair); Alan George; Hannah George (Co Vice Chair); Andrew Grace; Nancy Maguire (Co Vice Chair); His Honour John Phillips CBE (resigned 5th June 2024); Liz Varlow; Jessica Villiers appointed 16th November 2023); Jack Zaborski (appointed 16th November 2023); Julia Rochester (appointed 16th November 2023); Charlotte Lincoln (appointed 16th November 2023).
Advisers	Jan Berger; Mark Withers; Joe Harrison-Greaves
Honorary Treasurer	Sally Brabyn
Founder	Lesley Schatzberger
Executive Director	Rebecca Ellis
Administrator	Karen Kadow
Director of Learning	Britta Koerber
Projects Assistant	Lisa Williams
Address	15 Priory Street, York, YO1 6ET
Telephone	01904 658189
Email	info@jessiesfund.org.uk
Website	www.jessiesfund.org.uk
Bankers	CAF Bank Ltd, Kings Hill, West Mallings, Kent, ME19 4TA HSBC Bank plc, 13 Parliament Street, York, YO1 8XS
Independent Examiner	Adrian Rodaway, FCA, BFP, DChA HPH, Chartered Accountants 54 Bootham, York, YO30 7XZ

## Summary of Financial Activities, 2023 - 2024

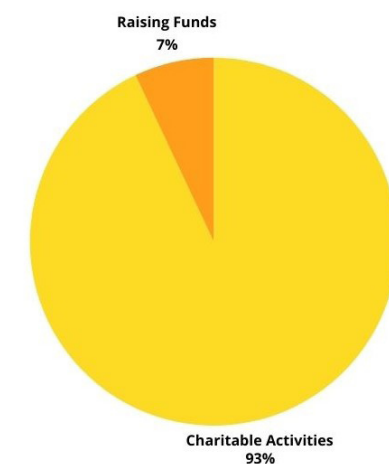
### Income

Donations and legacies	£252,139
♦ Grants	33%
♦ Donations	33%
♦ Legacies	31%
♦ Gift Aid tax refunds	3%
Other fundraising activities	£14,124
Income from charitable activities	£20,978
Investment income	£8,999
<b>TOTAL</b>	<b>£296,240</b>



### Expenditure

Charitable activities	£287,319
Raising funds	£22,989
<b>TOTAL</b>	<b>£310,308</b>







Jessie's Fund, 15 Priory Street, York YO1 6ET

Tel: 01904 658189

[info@jessiesfund.org.uk](mailto:info@jessiesfund.org.uk)

[www.jessiesfund.org.uk](http://www.jessiesfund.org.uk)

Registered charity no. 1045731