

NORFOLK SEN NETWORK

England & Wales · Charity number 1044353

Details

Other names	NORFOLK NETWORK 81
Status	Registered
Legal form	Other
Registered	1995-02-18
Register	View on the Charity Commission register

Contact

Address	1st Floor Portal House 7B Alkmaar Way Norwich NR6 6BF
Phone	0330 043 0225
Email	norfolksennetwork@hotmail.co.uk
Website	www.norfolksennetwork.org

Activities

Objects: THE CHARITY'S OBJECTS ("THE OBJECTS") ARE TO ADVANCE THE EDUCATION OF CHILDREN AND YOUNG PEOPLE (UP TO THE AGE OF 25) WITH SPECIAL EDUCATIONAL NEEDS AND, IN PARTICULAR, TO EDUCATE THE PARENTS OF SUCH CHILDREN ABOUT ALL MATTERS RELATING TO THE EDUCATION OF THEIR CHILDREN AND INFORMING YOUNG PEOPLE THEMSELVES OF THEIR RIGHTS AND TO PRESERVE AND PROTECT THE HEALTH OF SUCH PARENTS AND YOUNG PEOPLE.

Activities: The charity gives information and support to parents of children with all kinds of special educational needs and young people themselves who have special educational needs (16 to 25) through assessment, issuing of an EHC Plan, tribunals, mediation, exclusions and complaints.

Classification

- **How:** Provides Advocacy/advice/information
- **What:** Education/training
- **Who:** People With Disabilities

Geography

- **Area of benefit:** NOT DEFINED- IN PRACTICE NORFOLK
- Norfolk

Finances

Period end	Income	Expenditure	Assets	Employees
2025-10-31	£80,511	£79,577	-	-
2024-10-31	£79,095	£78,654	-	-
2023-10-31	£62,273	£37,725	-	-
2022-10-31	£25,191	£38,003	-	-
2021-10-31	£29,808	£37,253	-	-
2020-10-31	£32,217	£18,788	-	-

Trustees

Name	Role	Appointed
ALEX O'SULLIVAN		2025-05-08
Clayton Anderson		2024-03-08
Julie Playford		2022-11-25
LUCY POLLARD		2023-03-09
PATRICIA BRICKLEY		1987-11-01

NORFOLK SEN NETWORK

England & Wales - Charity number 1044353

Accounts



Norfolk SEN Network

Registered charity no. 1044353

First Floor, Portal House, 7B Alkmaar Way, Norwich, NR6 6BF

W: www.norfolksennetwork.org E: norfolksennetwork@hotmail.co.uk Helpline: 0330 043 0225

Annual Report & Accounts 2024 – 2025



*Linton Crescent Charity of the
Year 2024*

*BrickFEST @ The Brickmakers and
B2, 2025*



Norfolk Cribbage Association

Trustees Report 2024-25

I am delighted to present the annual review and accounts of Norfolk SEN Network for the period 1st November 2024 to 31st October 2025.

In what has once again proven to be a busy period for the charity, I would like to thank all staff, volunteers and trustees for their dedication, commitment and hard work in ensuring that we are able to continue to support children, young people and their families in accessing the education provision and support that they deserve and are entitled to. Without the knowledge, expertise and passion of our staff to ensure we achieve the best possible outcomes for families, our work would not be possible.

During the period, ***we supported 64 children from 60 families***. Although the numbers are not too dissimilar from the previous year, the breadth of need and complexity of cases that we have seen throughout the period really does demonstrate that Norfolk SEN Network is as vital now for families as it has ever been. ***The number of identified diagnoses amongst the children and young people supported increased by 24%*** from 78 in the previous year, to 97 in the current period


We saw ***an increase of 46% in the level of activity and support*** we delivered during the 2024/25 period. We particularly saw increases in the number of meetings and support with schools for families, and an increase of 57% in tribunal support delivered. ***We provided over 1,586 hours of direct one-to-one support*** with families, averaging around almost 26.5 hours per family, or 24.75 hours per child or young person.

Our helpline continued to be a busy and accessible resource for families, and we once again saw an increase in the number of calls received ***up from 405 calls in 2023/24 to 667 calls in 2024/25, an increase of 65%***. The helpline took calls on 21 different subjects.

As many will be aware, without income, we would not be able to deliver our work and no work by Norfolk SEN Network is government or statutory funded as we are entirely independent. This means we rely on our own fundraising efforts, the support in donation and fundraising from others, income from our membership and grant and trust donations. We thank anyone that has donated to our charity, no matter how large or small your donation. If you would like to discuss ways in which you may be able to support our work, please do get in touch! Claire Brooks, landlady of The Brickmakers in Norwich continues to be an Ambassador for the charity and she is a great example of how others can support us. Thank you, Claire, for your ongoing support!

Thanks also to our Landlords NM Finance for their support throughout our tenancy.

Clayton Anderson



Chairperson

9th March 2026

Norfolk SEN Network Annual Report for 2024-25

Membership @ 31.10.25: 71 supported members

96 free email members

Ambassadors: Claire Brooks of the Brickmakers

Norwich Computers

Trustees: Clayton Anderson (Chair)

Pat Brickley (Vice Chair)

Julie Playford

Lucy Pollard

Tara Durrant

Alex O'Sullivan

Treasurer: Chris Jay

Employees: Nichola Corcoran Development Worker
(Lead from 01-09-25)

Karla Cooper Development Worker

Rebecca Clifton Development Worker

Melissa Sole Development Worker

Danielle Cann Administrator/Helpline

Bankers: Barclays PLC, St. Stephens Branch, Norwich

Our aims and objectives

- Norfolk SEN Network has been supporting parents of children with special educational needs throughout Norfolk since 1987. Since the changes to the law through the Children & Families Act 2014, we now also support young people themselves (16 to 25) who have special educational needs to find the right educational provision.
- Our committee is elected in accordance with our constitution from our Membership each year at our Annual General Meeting

Our aims: are to help *all* parents of children with special educational needs to find the education which is right for their child and to support young people 16 to 25 to also find the right provision to meet their needs.

Norfolk SEN Network Annual Report for 2024-25

Who we support

The children we supported during 2024/25 had the following diagnosis:

Diagnosis	2024/25	2023/24
ADHD	19	17
Anxiety	6	2
Autism Spectrum Disorder (ASD)	42	34
Attachment and trauma issues	1	1
Awaiting diagnosis	1	-
Dyslexia	3	4
Dyspraxia	3	3
GLUT1 Deficiency Syndrome	1	-
Hypermobility	2	-
Non-verbal	1	2
Obsessive Compulsive Disorder (OCD)	1	-
Pathological Demand Avoidance (PDA)	4	11
School trauma	2	-
Selective Mutism	2	2
Sensory and Sleep Difficulties	1	-
Sensory Processing Disorder (SPD)	1	-
Severe Demand Avoidance	1	-
Social, Emotional. And Mental Health needs (SEMH)	3	2
Speech, Language and Communication Needs (SLCN)	1	-
Turner Syndrome	1	-
Visual Stress/Meares-Irlen Syndrome	1	-
Total:	97	78

Some children had a single diagnosis; many children had a multiple diagnosis. The table above demonstrates the breadth and complexity of diagnosis for the children, young people and families who we work with, highlighting how many children and young people have multiple needs that need to be understood and met to ensure they can access the best possible education and provision. The work of our Development Workers is key in identifying what support children and young people need and helping their families to achieve this.

“As a family, we have been navigating the world of SEN for six years with two children. We have spoken to so many services, charities, the Local Authority, coordinators, managers, helplines and read endless policy and law. Norfolk SEN Network has been the most helpful service in Norfolk for us as a family. Their advice line helped us with emergency review, rewriting the EHCP, naming a school, the SRB system, reports going missing and enforcing Section F of the EHCP. Nowhere else will answer the phone and actually help you. Their advice has been invaluable, and without it, I don't think my other child would be in education at all now. We are so grateful to them.”

During the year, we supported a total of 64 children and young people. Their age and genders were as follows:

Age	Male	Female	Total
4	2	1	3
5	3	2	5
6	2	2	4
7	1	-	1
8	5	2	7
9	3	-	3
10	2	-	2
11	5	1	6
12	7	1	8
13	1	4	5
14	-	6	6
15	5	4	9
16	2	1	3
17	1	-	1
18	-	1	1
Total:	39	25	64

This year, 61% of children and young people we supported were male, 39% were female. In our previous year, 68% were male and 32% were female. This represents a slight increase in the number of females we are supporting.

The ethnicity of families supported this year, based on categories from the GOV.UK 2021 census were:

Ethnicity	2024/25	2023/24
Asian or Asian British	2	2
Black, Black British, Caribbean or African	1	2
White	61	62
Total:	64	66

Our Development Work

Our Development Workers continue to work at full capacity, tirelessly supporting children, young people and their families to ensure that children and young people can access the education and support they deserve and are entitled to. In September 2025, Nichola Corcoran became our Lead Development Worker, overseeing our work and the staff team.

“As a parent navigating the tribunal process for my son, I cannot express how grateful I am. The development worker meticulously handled all the paperwork and consistently followed up with solicitors, guiding us seamlessly up to the hearing. Their support alleviated much of the stress, keeping me calm and focused during a challenging time.

Thanks to Norfolk SEN Network, we successfully obtained the EHCP our son desperately needed. I wholeheartedly recommend their services to anyone facing similar challenges. They truly make a difference!”

This year we have supported families with:

Type of Work	2024/25	2023/24
Annual Reviews	20	15
Applying for EHC assessments	14	18
Checking draft and final Plans	10	13
DDA Appeals	0	1
Early Review	5	3
Education Otherwise Than in a School (EOTIS)	2	0
Exclusions	4	2
Mediation	7	3
Medical Needs	3	0
Provision in school / alternative provision	9	9
School complaints governors	2	0
School placements and meetings	15	12
School refusal	7	7
School support and meetings (including Family School Partnerships (FSP), Early Help Assessment and Plan (EHAP), Team Around the Family (TAF), Child Planning Meeting (CPM), SENCo)	22	0
Tribunals and tribunal support	22	14
Total:	142	97

Overall, we saw **an increase of 46% in the level of activity and support** we delivered during the 2024/25 period, as demonstrated by the previous table. We particularly saw increases in the number of meetings and support with schools for families, and an increase of 57% in tribunal support delivered. This clearly demonstrates the increasing need for our services, and the increased level of capacity required to keep up with demands.

This year, ***we provided over 1,586 hours of direct one-to-one support*** with families, averaging around almost 26.5 hours per family, or 24.75 hours per child or young person. The amount of time supporting each family ranged from just 1 hour, up to 128 hours.

Our Helpline Work

Our helpline is a free resource that families may call for advice and support. During the year, it was open Monday to Friday, 9am–2pm, with an answerphone service in place during other hours. ***We once again saw an increase in the number of calls received to our helpline, up from 405 calls in 2023/24 to 667 calls in 2024/25, an increase of 65%.*** The helpline took calls on 21 different subjects including:

- Annual Reviews
- Application for statutory assessment
- Early Annual Review
- Exclusion (fixed term)
- Exclusion (permanent)
- LA refusal to assess
- LA refusal to issue
- Mediation support
- Medical Needs
- Post 16 placement
- Provision/ Alternative provision
- Reading a Draft Plan
- School non-attendance / refusal
- School not meeting needs / not following a plan
- School placement
- School problems / help in school
- Secondary placement
- Support with behaviour
- Transferring EHCP from one LA to another
- Transport
- Tribunal support

The most often discussed subjects were tribunal support with 18% of all calls, application for statutory assessment at 10% of the call share and school placement and school not meeting needs / following a plan, each with 9%.

Social Media

We continue to post relevant updates and news stories to our social media accounts, accessed by families and professionals alike. ***We had a total of 3,414 followers across our social media accounts, an increase of 190 people, up by 8%.*** Our Facebook account performed well, showing an increase of followers increasing from 2,412 to 2,602.

Training events and coffee mornings

During the year, we ran a selection of informal coffee mornings and slightly more formal training events. These sessions included:

- Coffee morning with Wendy Matsell, Senior Travel & Transport Officer, Norfolk County Council on Transport in November 2024
- Training Day on Exclusions and Independent Review Panel with Melanie White in December 2024
- Webinar on Annual Reviews with Madeleine Oakley, Solicitor, from Birkett Long Solicitors in June 2025
- Coffee morning with Sam McCallum, Head of Statutory SEND, Norfolk County Council, on new updates to SEN Procedures in July 2025
- Coffee morning with Susi Bauer, a freelance ADHD Coach, Facilitator, Training Designer and Consultant on ADHD and neurodiversity in September 2025
- Coffee morning with James Brown, Senior Solicitor, from SEN Legal on SEN Transport in October 2025



We thank all trainers and speakers for their time and contribution during the year in providing learning, support and advice to families and professionals.

Newsletter

Our free newsletter was sent out on four occasions to an average of 150 people each time during 2024/25. The newsletter includes information on our work and events, advice for families and information about our fundraising activities. If you would like to sign up for our newsletter, please do so via our website.

Fundraising

During 2024/25, we were thankful and fortunate to be supported by a range of funders, business, community groups and individuals. This support is invaluable in allowing us to continue our work with children, young people and their families, ensuring they can access the education and support they deserve and are entitled to. Support included:

Grants: We were fortunate to be supported during the period by Norfolk Community Foundation (via a Love Norfolk grant), The Masonic Charitable Foundation, The Paul Bassham Charitable Trust, an anonymous grant and our largest supporter, The National Lottery Community Fund. Thank you to all our funders for supporting our work.

Linton Crescent Christmas Lights: Thank you once again to Tony and Jeanette Fairweather for supporting us with their Christmas lights switch on in Linton Crescent, Norwich. The event raised £625.



Brickmakers BrickFEST: Our thanks to Claire Brooks and all involved in organising the great music event that is BrickFEST at The Brickmakers and B2 venues on Sprowston Road in Norwich. They donated an amazing total of £1,000!



Norfolk Cribbage Association: Thank you to the Norfolk Cribbage Association for supporting us, raising £295!



Selling donated goods: Several parents donated goods to the charity which we sell on Marketplace and at Garage Sales and Car Boot sales. We also sell books in our office.

Two Old Catton Garage sales raised £63. Thank you to Mike and Christine Shoot for lending us their garden.

Broadland Heart Lottery: Did you know that you can nominate us when buying tickets for the Broadland Heart Lottery which raises funds towards Independent Reports for parents? You can also win some good prizes! During the year, we raised £232, meaning we have now raised over £1,200 since we joined.

Other support: Thank you to Kate Quentin-Hicks, a member of Norfolk SEN Network, for raising £510 at their coffee and cake morning. Also, thank you to Mike Shoot for raising £20 from his Christmas carvings and to our very own Development Worker Beckie who raised £18 with a collection from Beebops, fun and interactive sensory music classes.

Other ways to help us: We can receive donations via PayPal and the PayPal Giving Fund. This has raised £967 in the financial period. Easy Fundraising raised £35 and Recycle4Charity raised £7.

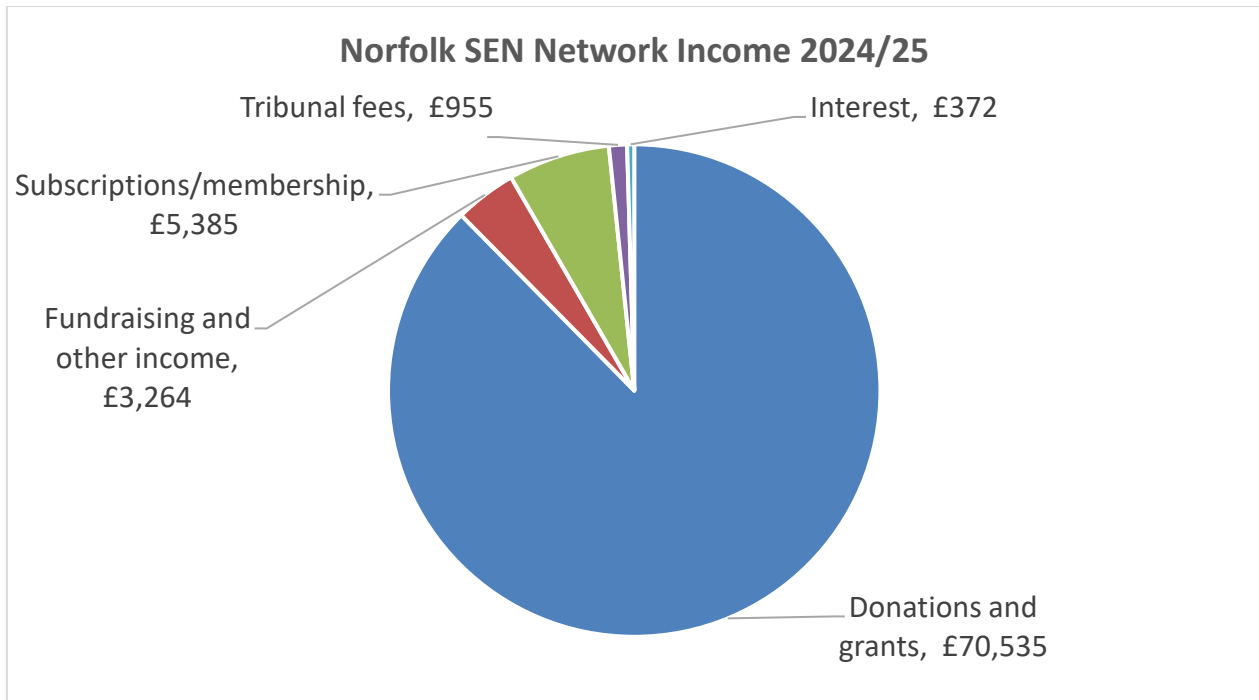
Gift Aid your donation to give us an extra 20% on top of your donation.

Collecting tins – do you know an office or shop who would take one of our tins? If you do, please do get in touch!

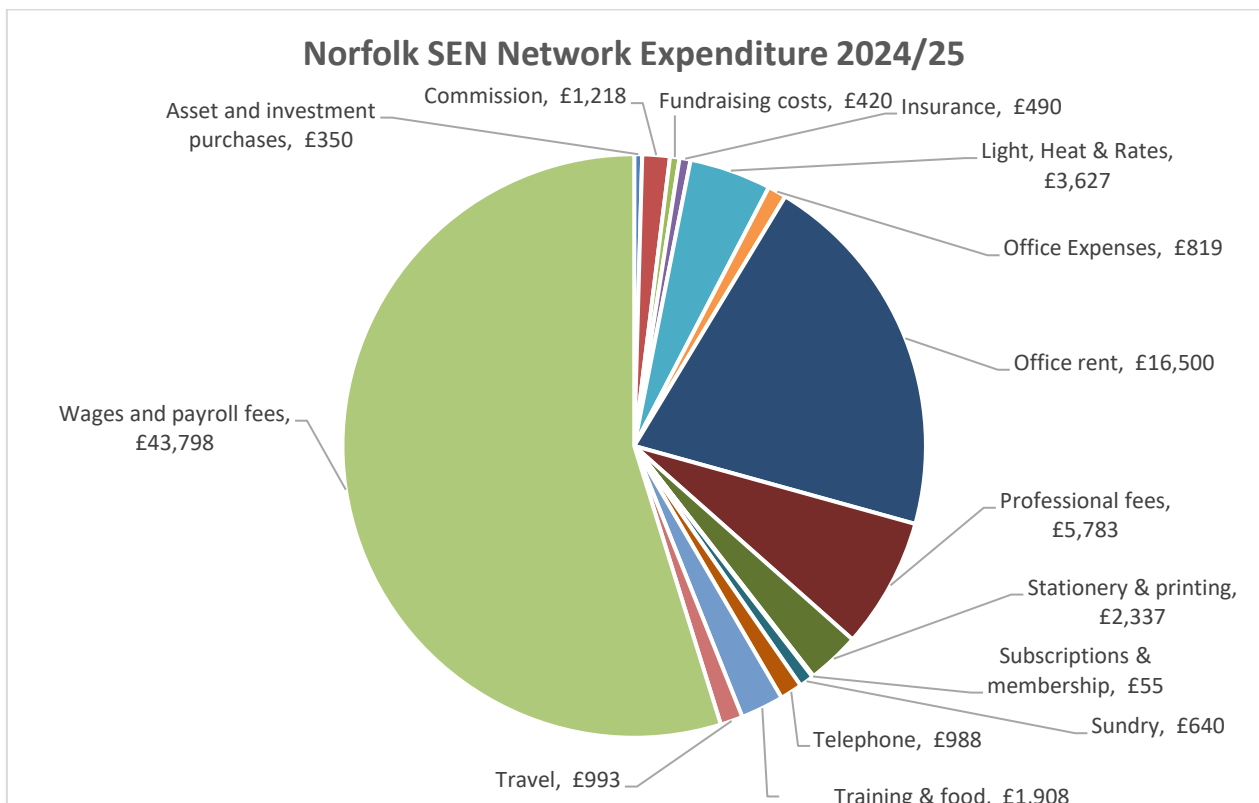
Are you looking to do a run, jump out of a airplane or do another type of activity? Please do consider asking people for sponsorship to raise money for Norfolk SEN Network!

Income and expenditure

Our income level demonstrated a slight increase from £79,095 in 2023/24 to £80,511 in 2024/25.



Most areas of income remain consistent, with subscriptions and memberships showing an increase of 29%, up from £4,170 in 2023/24 to £5,385 in 2024/25 and donations and grants showing a 4% increase up from £67,635 in 2023/24 to £70,535 in 2024/25. Fundraising and other income demonstrated a 46% reduction in 2024/25, down to £3,264 from £6,091 in 2023/24. Expenditure was as follows:



During 2024/25, our expenditure was slightly up on the previous year by £1,273, totalling £79,927. This was largely due to the increased wages and payroll fees which were up 36% by £11,666. This was largely because of running a full year with our extended staff team. Light, heat and rates also saw a substantial increase in expenditure of 143%, up to £3,627 from £1,490 in 2023/24, a difference of £2,137. Overall, we gained a surplus for the year of £441.

" We would highly recommend Norfolk SEN Network to any parent or carers seeking support.

Our development worker had so much knowledge and experience, having them advocate in our corner gave us confidence during the whole tribunal and left us feeling informed and empowered to continue to fight for what we know our little boy desperately deserved.

Without the invaluable support we received I don't think we would have had such a positive experience during what is a very challenging, time consuming period for parents.

We could not have wished for a better outcome. Thank you all at Norfolk SEN Network for providing such a beneficial service."

Thank you to everyone involved in another successful year for Norfolk SEN Network where we continue to support and advocate for children, young people and families to ensure that they can access the education they deserve and are supported to achieve the best possible outcomes in their educational setting.

Clayton Anderson



Chairperson

9th March 2026

NORFOLK SEN NETWORK
 Receipts and Payments Account
 12 months ended 31 October 2025

	Note	Unrestricted Funds £	Restricted Funds £	Total Funds £	Last Year 2024 £
Receipts					
Subscriptions		5,385		5,385	4,170
Tribunal fees		955		955	645
Delegate fees			0	0	175
Donations	1	300	70,235	70,535	67,635
Fundraising and other income	2	3,264		3,264	6,091
Interest received		372		372	379
Total receipts		10,276	70,235	80,511	79,095

Payments

Wages and payroll fees		692	43,106	43,798	32,132
Commission		1,218		1,218	946
Professional fees		2,885	2,898	5,783	7,157
Fundraising costs		420		420	2,083
Insurance		104	386	490	612
Subscriptions & membership		55		55	50
Light, Heat & Rates		0	3,627	3,627	1,490
Telephone		0	988	988	704
Office Expenses		819		819	651
Stationery & printing		2,337		2,337	1,999
Travel		993		993	1,066
Office rent			16,500	16,500	19,801
Training & food		200	1,708	1,908	3,852
Sundry		640		640	795
<i>Sub total</i>		10,365	69,212	79,577	73,338

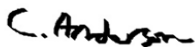
Asset and investment purchases

Conference room chairs				0	200
Mini PC, Curved screen, floor cover				0	708
Newline Elara Interactive touchscreen and stand				0	3,700
Tea and Coffee urn				0	48
Laptops for new DW's				0	590
Furniture from Unitas				0	50
Furniture - lockable cabinet				0	20
				0	
Norwich Computers		350		350	
Mobile phone				0	
Laminator				0	
Shredder				0	
<i>Sub total</i>		350	0	350	5,316

Total payments		10,715	69,212	79,927	78,654
-----------------------	--	---------------	---------------	---------------	---------------

Net receipts/(payments)		(439)	1,023	585	441
Transfers between funds				0	0
Cash funds last year end		218	28,182	28,400	27,959
Cash funds this year end		(221)	29,205	28,984	28,400

Clayton Anderson



Chairperson
 9th March 2026



Section A

Independent Examiner's Report

Report to the trustees

Charity Name
Norfolk SEN Network

On accounts for the year
ended

31 October 2025

Charity no
(if any)

1044353

Set out on pages

One to three

(remember to include the page numbers of additional sheets)

I report to the trustees on my examination of the accounts of the above charity ("the Trust") for the year ended 31/10/2025.

Responsibilities and
basis of report

As the charity's trustees, you are responsible for the preparation of the accounts in accordance with the requirements of the Charities Act 2011 ("the Act").

I report in respect of my examination of the Trust's accounts carried out under section 145 of the 2011 Act and in carrying out my examination, I have followed all the applicable Directions given by the Charity Commission under section 145(5)(b) of the Act.

Independent
examiner's statement

I have completed my examination. I confirm that no material matters have come to my attention in connection with the examination which gives me cause to believe that in, any material respect:

- the accounting records were not kept in accordance with section 130 of the Charities Act; or
- the accounts did not accord with the accounting records; or
- the accounts did not comply with the applicable requirements concerning the form and content of accounts set out in the Charities (Accounts and Reports) Regulations 2008 other than any requirement that the accounts give a 'true and fair' view which is not a matter considered as part of an independent examination.

I have no concerns and have come across no other matters in connection with the examination to which attention should be drawn in this report in order to enable a proper understanding of the accounts to be reached.

Signed:

Date:

16 March 2026

Name:

Maria Brydon ACA

Relevant professional
qualification(s) or body
(if any):

Chartered Accountant

Address:

Saxon House

Hellesdon Park Road

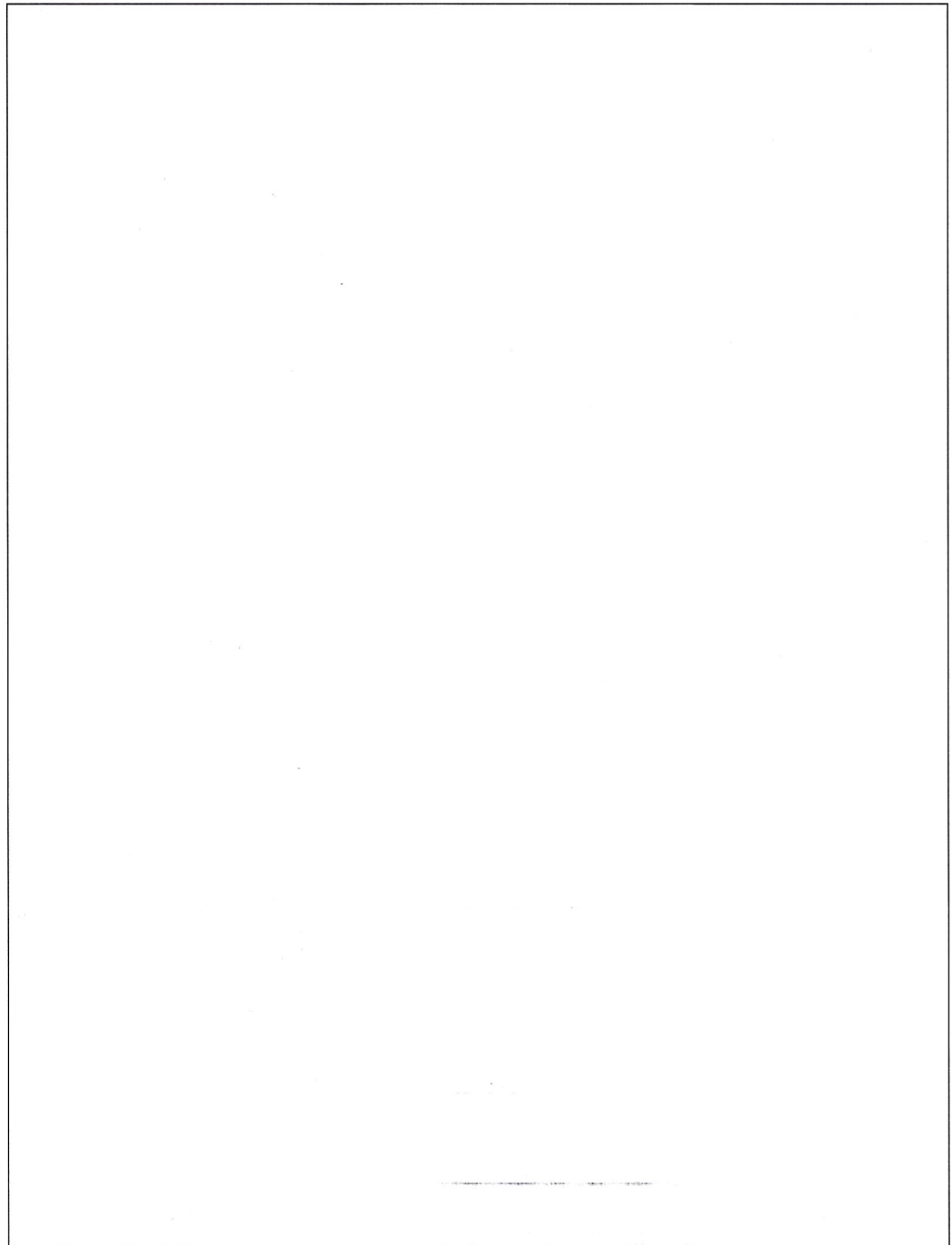
Norwich, NR6 5DR

Section B

Disclosure

Only complete if the examiner needs to highlight material matters of concern (see CC32, Independent examination of charity accounts: directions and guidance for examiners).

Give here brief details of any items that the examiner wishes to disclose.



NORFOLK SEN NETWORK

England & Wales - Charity number 1044353

Accounts

Trustees Report 2023-24

As we settled into our new home in Portal House we saw the number of Trustees increase to 7;

We are now in our second year of National Lottery funding, whose support has been invaluable. Our new offices have given us the opportunity to give our staff a spacious building to work in and enabled the charity to hold inhouse training sessions and coffee mornings, invite parents in to discuss their child's difficulties and professional partners to discuss our work.

The Fine City Chorus held a spectacular show at St. Peter Mancroft, we attended various Christmas events and together with donations from the Linton Crescent Christmas Lights Switch on, we were able to purchase a large screen on which to hold Tribunals and training sessions. Our heartfelt thanks to the Fine City Chorus and Norwich Harmony and the residents of Linton Crescent for choosing us as their Charity of the Year.

Thanks also to Norwich Computers, one of our Ambassadors, for their advice on purchasing the screen, setting up our internet and sorting out our IT problems.

We were able to furnish the offices for a few hundred pounds thanks to donations of furniture and purchase of good quality items.

Thanks also to our Landlords NM Finance for their support throughout our tenancy.

Claire Brooks, landlady of The Brickmakers in Norwich continue to be an Ambassador for the charity, have raised several thousand pounds for the charity again this year through Quiz Nights, Musical Bingo and events. She always puts the 'fun' in fundraising.

Thank you to the Paul Bassham Charitable Trust for their continuing support and the Norfolk Community Foundation for being there to advise us.

Thanks to part of the National Lottery grant we were able to bring in a consultant to give a critical eye over the structure and running of the charity, this raised several issues with regard to Governance which we will be addressing over the next year.

Thanks to our staff for their dedication and our Trustees for their guidance.

Pat Brickley

Chairperson



Independent examiner's report on the accounts

Section A Independent Examiner's Report

Report to the trustees

Charity Name
Norfolk SEN Network

On accounts for the year ended

31 October 2024
Charity no (if any) 1044353

Set out on pages

One to three
(remember to include the page numbers of additional sheets)

Responsibilities and basis of report

I report to the trustees on my examination of the accounts of the above charity ("the Trust") for the year ended 31 / 10 / 2024.

As the charity's trustees, you are responsible for the preparation of the accounts in accordance with the requirements of the Charities Act 2011 ("the Act").

I report in respect of my examination of the Trust's accounts carried out under section 145 of the 2011 Act and in carrying out my examination, I have followed all the applicable Directions given by the Charity Commission under section 145(5)(b) of the Act.

Independent examiner's statement

[The charity's gross income exceeded £250,000 and I am qualified to undertake the examination by being a qualified member of [insert name of applicable listed body]]. *Delete [] if not applicable.*

I have completed my examination. I confirm that no material matters have come to my attention in connection with the examination (other than that disclosed below *) which gives me cause to believe that in, any material respect:

- the accounting records were not kept in accordance with section 130 of the Charities Act; or
- the accounts did not accord with the accounting records; or
- the accounts did not comply with the applicable requirements concerning the form and content of accounts set out in the Charities (Accounts and Reports) Regulations 2008 other than any requirement that the accounts give a 'true and fair' view which is not a matter considered as part of an independent examination.

I have no concerns and have come across no other matters in connection with the examination to which attention should be drawn in this report in order to enable a proper understanding of the accounts to be reached.

** Please delete the words in the brackets if they do not apply.*

Signed:

Date: 6 May 2025

Name: Maria Brydon ACA

Relevant professional qualification(s) or body
Chartered Accountant

NORFOLK SEN NETWORK
 Receipts and Payments Account
 12 months ended 31 October 2024

Note	Unrestricted Funds £	Restricted Funds £	Total Funds £	Last Year 2023 £
Receipts				
Subscriptions	4,170		4,170	2,335
Tribunal fees		645	645	925
Delegate fees		175	175	0
Donations	2,305	65,330	67,635	55,955
Fundraising and other income	6,091		6,091	3,003
Interest received	379		379	55
Total receipts	12,945	66,150	79,095	62,273

Payments

Wages and payroll fees		32,132	32,132	20,358
Commission	946		946	1,378
Professional fees	1,789	5,368	7,157	1,240
Fundraising costs	2,083		2,083	1,426
Insurance	612		612	436
Subscriptions & membership	50		50	50
Light, Heat & Rates	1,490		1,490	0
Telephone	704		704	1,217
Office Expenses	651		651	30
Stationery & printing	1,999		1,999	2,300
Travel	1,066		1,066	1,017
Office rent		19,801	19,801	5,589
Training & food	1,160	2,692	3,852	1,014
Sundry	795		795	651
Sub total	13,345	59,993	73,338	36,706

Asset and investment purchases

Conference room chairs	200		200	
Mini PC, Curved screen, floor cover	708		708	
Newline Elara Interactive touchscreen and st	3700		3,700	
Tea and Coffee urn	49		49	
Laptops for new DW's	590		590	
Furniture from Unitas	50		50	
Furniture - lockable cabinet	20		20	
Printers			0	60
Broucher stand			0	193
Mobile phone			0	140
Laminator			0	90
Shredder			0	536
Sub total	5,316	0	5,316	1,019

Total payments	18,661	59,993	78,654	37,725
-----------------------	---------------	---------------	---------------	---------------

Net receipts/(payments)	(5,716)	6,157	441	24,549
--------------------------------	----------------	--------------	------------	---------------

Transfers between funds	820	(820)	0	0
Cash funds last year end	5,116	22,843	27,959	3,410
Cash funds this year end	220	28,180	28,400	27,958

NORFOLK SEN NETWORK

Notes to Receipts and Payments Account
31st October 2024

	Unrestricted Funds £	Restricted Funds £	Total £
1. Donations and Grants			
National Lottery		57,510	57,510
Norwich Freemens Charity		6,820	6,820
Newsquest Grant		1,000	1,000
Dawn Alexander	50		50
Paul Bassham Charitable Trust	2,000		2,000
Trowse Church donation	250		250
Thomas Emmett donation	5		5
			0
			0
			0
			0
			0
			0
			0
			0
			0
Other			0
			0
	2,305	65,330	67,635

2. Fundraising and Other Income

Coop	1,224		1,224
C Scott	298		298
Collection tins	200		200
Fine City Chorus	1,292		1,292
Mustard Quartet	517		517
Norwich International Darts Team fundraise	421		421
Brickmakers	1,669		1,669
Sundry	82		82
PayPal Donations	55		55
Heart Lottery	333		333
	6,091	0	6,091

P Brickley
Chairman
06/05/2025



Section A Independent Examiner's Report

Report to the trustees

Charity Name
Norfolk SEN Network

On accounts for the year ended

31 October 2024 Charity no (if any) 1044353

Set out on pages

One to three (remember to include the page numbers of additional sheets)

I report to the trustees on my examination of the accounts of the above charity ("the Trust") for the year ended 31 / 10 / 2024.

Responsibilities and basis of report

As the charity's trustees, you are responsible for the preparation of the accounts in accordance with the requirements of the Charities Act 2011 ("the Act").

I report in respect of my examination of the Trust's accounts carried out under section 145 of the 2011 Act and in carrying out my examination, I have followed all the applicable Directions given by the Charity Commission under section 145(5)(b) of the Act.

Independent examiner's statement

[The charity's gross income exceeded £250,000 and I am qualified to undertake the examination by being a qualified member of [insert name of applicable listed body]]. Delete [] if not applicable.

I have completed my examination. I confirm that no material matters have come to my attention in connection with the examination (other than that disclosed below *) which gives me cause to believe that in, any material respect:

- the accounting records were not kept in accordance with section 130 of the Charities Act; or
- the accounts did not accord with the accounting records; or
- the accounts did not comply with the applicable requirements concerning the form and content of accounts set out in the Charities (Accounts and Reports) Regulations 2008 other than any requirement that the accounts give a 'true and fair' view which is not a matter considered as part of an independent examination.

I have no concerns and have come across no other matters in connection with the examination to which attention should be drawn in this report in order to enable a proper understanding of the accounts to be reached.

* Please delete the words in the brackets if they do not apply.

Signed:

Date:

6 May 2025

Name:

Maria Brydon ACA

Relevant professional qualification(s) or body

Chartered Accountant

NORFOLK SEN NETWORK

England & Wales - Charity number 1044353

Accounts



Norfolk SEN Network

Registered charity no. 1044353

Helping to access special needs education

Annual Report 2022/23



Fine City Chorus at St. Peter Mancroft – Charity of the Year 2023



Brundall Coop Charity 2022/23



City of Ale Charity of the Year 2023

Thank you so much for everything. Your support with the EHCP process has been invaluable and we very much appreciate what you and your team do to support families.” - The O’Sullivans

1st Floor Portal House, 7B Alkmaar Way, Norwich, NR6 6BF

Helpline: 0330 043 0225

www.norfolksennetwork.org

TRUSTEES REPORT 2022-23

2022/23 was one of our most successful years for fundraising. Thanks to a 4 year grant from the National Lottery we have been able to move into much larger offices, which will enable us to offer 'in house' training for parents at low cost and hold Mediation and Tribunal hearings in comfortable surroundings.

Three organisations chose us as their Charity of the Year for 2023 –

The Cooperative, The City of Ale & The Fine City Chorus

We very much enjoyed working with them all and thank them for the funds raised for us.

It's thanks to The Fine City Chorus and Jeanette and Tony Fairweather choosing our charity to benefit from their Christmas Lights Switch On 2023, we were able to purchase a large interactive screen for training and tribunal use.

Funding received from our Charity of the Year at Brundall Coop enabled us to increase our Helpline hours by an hour a day enabling us to cover parents lunchtime period.

This October sadly saw the end of our relationship with the Yapp Charitable Trust who have supported us for a number of years. We thank them for their support, especially for doubling our grant during lockdown.

Staff salaries are now secure for the next 3 years thanks to the National Lottery. We thank Danielle, Nikki and Karla for their dedication in supporting families.

Thanks also to Julie, Lucy and Tara for coming on board as trustees and helping steer the charity. Thanks also to Chris Jay for finalising our accounts and Kim Mayfield for auditing them. Kim will be retiring next year, we wish him a happy retirement and thank him for being our auditor for a number of years.

Our most sincere thanks to our Ambassador, Claire Brooks of The Brickmakers on Sprowston Road for her enthusiasm in fundraising and for promoting the work of our charity through Quiz Nights, Musical Bingo and Charity days.

Our most grateful thanks to the Paul Bassham Charitable Trust for their long term funding and the Norfolk Community Foundation for always being there to give advice. Thanks also to the Alan Boswell Charitable Trust and the Baily Thomas Charitable Trust for funding to help us keep our costs down to parents.

Thanks to Liam and Easy Bathrooms for organising a massive fundraising raffle at the Norfolk Show. Special thanks to Katy Shoot for allowing us to share her office for 3 years.

As we move into our 38th year of supporting parents throughout Norfolk we look forward with great optimism that we will be able to support many more families to secure better provision for their children.

Pat Brickley...

Chairperson

Dated: 11th March 2024

NORFOLK SEN NETWORK

Membership @ 31.10.22 = 57	31	Purple supported members
	17	Yellow members
	10	Green members
	74	Free email members

Ambassador: Claire Brooks of The Brickmakers, Sprowston Road

Trustees:	Pat Brickley	(Chairperson)
	Julie Playford	(Vice-Chair)
	Chris Jay	(Treasurer)
	Dawn Alexander	(Resigned Feb 24)
	Tara Durrant	(Trustee)
	Danguoliukas Jevsiukova	(Trustee)
	Lucy Pollard	(Trustee)

Employees:	Nichola Corcoran	Development Worker
	Karla Cooper	Development Worker
	Danielle Cann	Administrator/Helpline

Bankers Barclay's plc, St. Stephens Branch, Norwich

- ❖ Norfolk SEN Network has been supporting parents of children with special educational needs throughout Norfolk since 1987. Since the introduction of the Children & Families Act 2014, we now support young people themselves (16 to 25) who have special educational needs to find the right educational provision.
- ❖ Our Committee is elected in accordance with our constitution from our Membership each year at our Annual General Meeting.

Our aims: are to help *all* parents of children with special educational needs to find the education which is right for their child and to support young people 16 to 25 to find the right provision to meet their needs.

ANNUAL REPORT 22-23

“Words cannot begin to explain how thankful we are. What an absolute star Nikki has been throughout the past 12 months. She has been such a huge help to me and my family. Nikki is a wealth of knowledge and speaks with great confidence about it, something I struggle with so it has been a weight off my shoulders having her there to speak on our behalf and has put my mind at ease. She saw my son for who he is and for what he deserves, a full-time education. Thanks to Nikki’s hard work he has been offered a placement in our first choice of school!

Nikki we can’t thank you enough we couldn’t have done it without you.”

Thank you! Bethany

Development Workers

Unfortunately our aim to increase the number of Development Workers has not yet been fulfilled. It is a steep learning curve and not something many people wish to take on. Our current team nevertheless continue to go above and beyond to ensure children’s needs are met.

This year we have supported parents with Governors and Independent Review Panel meetings, permanent exclusions and complaints as well as applying for EHC Plans, checking draft and final plans, attending Annual Reviews, Mediation and Tribunal hearings.

Our Development Workers helped with:

Tribunals	12
Mediations	6
Annual Reviews	7
Provision	9
Applying for an EHC Plan	6
Checking draft Plans	3
Permanent Exclusions	3
Independent Review Panels	1
Disability Discrimination Appeals	2

The children they supported had a variety of diagnosis, the main ones being:

ASD	29
Dyslexia, Dyspraxia and Dyscalculia	7
ADHD	9
Sensory processing	2
Hearing Difficulties	1
SEMH	3
PDA	3
Down Syndrome	2
Chronic Fatigue syndrome	1

They supported **47** children an increase of **3%** on last year

The ethnicity of families this year were:

White British	41
Eastern European	5
Scandinavian	1

The age range of children were:

5 years	1
6 years	4
7 years	2
8 years	2
9 years	1
10 years	7
11 years	5
12 years	2
13 years	6

14 years	5
15 years	3
16 years	5
17 years	1
18 years	1
20 years	2

The highest number in any age group was 10 year olds, probably because of secondary transfer. The number of young people we supported over 16 has increased by **30%**.

28 were boys and 19 were girls

Thanks to RC Snelling Charitable Trust, Alan Boswell Charitable Trust and the Baily Thoms Charitable Trust for funding to help us keep costs down to parents.

Exclusions

"I just wanted to drop a message to thank for all your help and making time to attend our son's Independent Review Panel following a permanent exclusion we felt was unfair to his SEN.

Norfolk SEN Network are a shining light for parents who may be experiencing difficult times. We really appreciate the response and support when we were struggling to navigate our way through the legalities of the system. What a fantastic charity" - Syretta

We helped several parents prepare their cases for meetings with Governors and also attended Independent Review Panels.

Tribunals

Tribunals still tend to take up a lot of our time. Preparing a case for registration, additional evidence, amending EHC Plans take a considerable amount of time, but it is necessary so that we can match

Barristers put up against us at hearings. Most take around 9 months to come to a hearing, even then they can be adjourned or postponed.

There was a slight increase in the number of Tribunals which went to hearings last year.

Helpline

Runs 9am to 1pm Monday to Friday. Over the past year it has taken

Thanks to an Anonymous trust for funding the running of our Helpline.

Our Helpline received calls on 20 different subjects with enquiries for help in applying for an EHC Plan and problem with support in schools being the most popular:

Help with applying for an EHC Plan	12
Support with difficulties in school	12
Provision	12
School not meeting need	11
Help with a Tribunal	11
Problems with placement	10
Non-attendance at school	9
School meetings	9
Secondary placement	9
Mediation	7
Early Annual Review	7
Refusal to assess	6
Support with behaviour	5
Annual Review meeting support	5
Adult Advocacy	2
Reading a draft Plan	2
Refusal to issue a Plan	2

Transferring an EHCP from one county to another 1

Social Media

Facebook followers: **2163** followers

18% increase on last year

Twitter Followers: **828** followers

7% increase on last year

Training

Training of our Development Workers was kept up to date with Karla updating her First Aid Training and Pat completing Safer Recruitment training. Our Development Workers also did additional training on Exclusions and DDA appeals.

Our Office

Our opening hours were increased to 1pm during the year thanks to funding from the Coop. Special thanks to the Alderman Norman Charitable Trust for funding our office rent for the year.

Newsletter

Our bi-monthly newsletter was produced throughout the year being circulated to both members and non-members and contained a variety of useful information for parents.

Fundraising

We were delighted to be the City of Ales Charity of the Year for 2023. A raffle at the launch event raised £ 376. We had 36 collecting tins in pubs across the city which raised £539.95. Sheldrakes Walk raised another £103 and The Rose Treasure Hunt £125.

Fine City Chorus Charity of the Year

The support of the Fine City Chorus has been magnificent, the highlight of which was the concert at St. Peter Mancroft with Norwich Harmony and the Carol Singing by Mustard, in all they raised almost **£2,000.**

The Coop



Being the Charity of the Year for the Brundall Coop helped raise **£1451.99** to lengthen the opening of our Helpline. On Valentines Day we gave out sweets as a mark of appreciation.

The Brickmakers

Special thanks to our Ambassador, Claire Brooks for her enthusiasm in raising funds for us through Charity Days, Quiz nights and Musical Bingo which raised **£ 1,044.**



Tickets bought in the Broadland Community Lottery have helped raise £600 to assist with funding towards Independent reports.

Breakfast on the Riverbank



In December 2022 we were invited to Breakfast on the Riverbank when very brave swimmers took to the icy water. Thank you to Cliff Oakey for organising this and raising £141.

We took the challenge and dressed as elves!

Lingwood Care Farm



Special thanks to Sally, Peter and Andrew Medlar for thinking of us at their 10th Anniversary party and donated £92 from the raffle held.

Wroxham & Hoveton Lions



Kindly donated £250 to our charity.

Easy Bathrooms mega Norfolk Show raffle



Thanks to Liam and Easy Bathrooms for raising **£1,200** in a mega raffle at the Norfolk Show.

Town & Parish Councils

We received several donations this year from Town and Parish Councils in support of the families we support in their area. Cromer Town Council, Thorpe St. Andrew Town Council, Newton Flotman Parish Council, Rackheath Parish Council, Stoke Holy Cross Parish Council and Mulbarton Parish Council.

Books

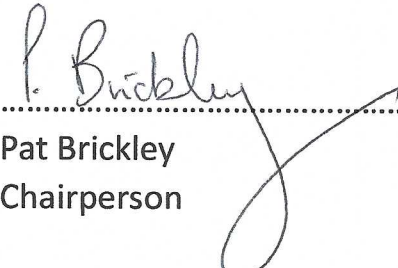
We continued to sell books outside our office in Catton and at Car Boots raising £ 33 for the charity.

Car Boots & Garage Sales

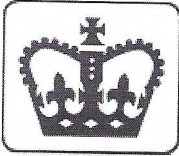
Special thanks to the Rudling family who held a Garage sale at Mundesley raising £100 and the Shoots for raising £31.

Future Plans

We are going into a new era with optimism and enthusiasm as we plan a programme of training for parents over the next year and introduce Coffee Mornings so parents can come and talk over their problem over their child's education with our Development Workers.


.....
Pat Brickley
Chairperson

Dated: 11th March 2024



Section A

Independent Examiner's Report

**Report to the trustees/
members of**

Norfolk SEN Network

**On accounts for the year
ended**

31 October 2023

**Charity no
(if any)**

1044353

Set out on pages

One to three

I report to the trustees on my examination of the accounts of the above charity ("the Trust") for the year ended 31/10/2023.

**Responsibilities and
basis of report**

As the charity trustees of the Trust, you are responsible for the preparation of the accounts in accordance with the requirements of the Charities Act 2011 ("the Act").

I report in respect of my examination of the Trust's accounts carried out under section 145 of the 2011 Act and in carrying out my examination, I have followed the applicable Directions given by the Charity Commission under section 145(5)(b) of the Act.

**Independent
examiner's statement**

I have completed my examination. I confirm that no material matters have come to my attention in connection with the examination which gives me cause to believe that in, any material respect:

- accounting records were not kept in accordance with section 130 of the Act or
- the accounts do not accord with the accounting records

I have no concerns and have come across no other matters in connection with the examination to which attention should be drawn in order to enable a proper understanding of the accounts to be reached.

Signed:

Kim Mayfield

Date:

11 MARCH 2024

Name:

Mr Kim Mayfield

**Relevant professional
qualification(s) or body
(if any):**

Chartered Accountant

Address:

10 Hillside

Chedgrave

Norwich

NORFOLK SEN NETWORK

Statement of Assets and Liabilities as at 31 October 2023

Unrestricted Funds	Restricted Funds	Total
---------------------------	-------------------------	--------------

Cash Funds				
	Bank Accounts	6,041	21,917	27,958
	Total cash funds	6,041	21,917	27,958

Assets retained for the charity's own use

At cost

Laptop and printers	1,257	449	1,706
Website	329	0	329
Gazebo	113	631	744
Brochure stand	193		193
Mobile phone	65		65
Laminator	90		90
Shredder	96	440	536
Total assets retained for own use	2,143	1,520	3,663

Current Assets

Donation - Fine City Chorus	946	0	946
Total debtors	946	0	946

Liabilities

National Lottery Grant	0	21,606	21,606
------------------------	---	--------	--------

NORFOLK SEN NETWORK

Statement of Assets and Liabilities as at 31 October 2023

Unrestricted Funds	Restricted Funds	Total
--------------------	------------------	-------

Cash Funds

Bank Accounts	6,041	21,917	27,958
Total cash funds	6,041	21,917	27,958

Assets retained for the charity's own use

At cost

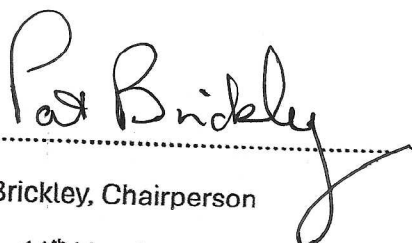
Laptop and printers	1,257	449	1,706
Website	329	0	329
Gazebo	113	631	744
Brochure stand	193		193
Mobile phone	65		65
Laminator	90		90
Shredder	96	440	536
Total assets retained for own use	2,143	1,520	3,663

Current Assets

Donation - Fine City Chorus	946	0	946
Total debtors	946	0	946

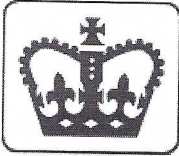
Liabilities

National Lottery Grant	0	21,606	21,606
------------------------	---	--------	--------



Pat Brickley, Chairperson

Date: 11th March 2024



Section A

Independent Examiner's Report

**Report to the trustees/
members of**

Norfolk SEN Network

**On accounts for the year
ended**

31 October 2023

**Charity no
(if any)**

1044353

Set out on pages

One to three

I report to the trustees on my examination of the accounts of the above charity ("the Trust") for the year ended 31/10/2023.

**Responsibilities and
basis of report**

As the charity trustees of the Trust, you are responsible for the preparation of the accounts in accordance with the requirements of the Charities Act 2011 ("the Act").

I report in respect of my examination of the Trust's accounts carried out under section 145 of the 2011 Act and in carrying out my examination, I have followed the applicable Directions given by the Charity Commission under section 145(5)(b) of the Act.

**Independent
examiner's statement**

I have completed my examination. I confirm that no material matters have come to my attention in connection with the examination which gives me cause to believe that in, any material respect:

- accounting records were not kept in accordance with section 130 of the Act or
- the accounts do not accord with the accounting records

I have no concerns and have come across no other matters in connection with the examination to which attention should be drawn in order to enable a proper understanding of the accounts to be reached.

Signed:

Kim Mayfield

Date:

11 MARCH 2024

Name:

Mr Kim Mayfield

**Relevant professional
qualification(s) or body
(if any):**

Chartered Accountant

Address:

10 Hillside

Chedgrave

Norwich

NORFOLK SEN NETWORK

Statement of Assets and Liabilities as at 31 October 2023

Unrestricted Funds	Restricted Funds	Total
---------------------------	-------------------------	--------------

Cash Funds				
	Bank Accounts	6,041	21,917	27,958
	Total cash funds	6,041	21,917	27,958

Assets retained for the charity's own use

At cost

Laptop and printers	1,257	449	1,706
Website	329	0	329
Gazebo	113	631	744
Brochure stand	193		193
Mobile phone	65		65
Laminator	90		90
Shredder	96	440	536
Total assets retained for own use	2,143	1,520	3,663

Current Assets

Donation - Fine City Chorus	946	0	946
Total debtors	946	0	946

Liabilities

National Lottery Grant	0	21,606	21,606
------------------------	---	--------	--------

NORFOLK SEN NETWORK

Statement of Assets and Liabilities as at 31 October 2023

Unrestricted Funds	Restricted Funds	Total
--------------------	------------------	-------

Cash Funds

Bank Accounts	6,041	21,917	27,958
Total cash funds	6,041	21,917	27,958

Assets retained for the charity's own use

At cost

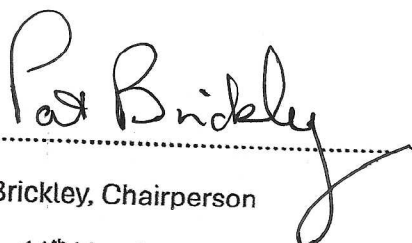
Laptop and printers	1,257	449	1,706
Website	329	0	329
Gazebo	113	631	744
Brochure stand	193		193
Mobile phone	65		65
Laminator	90		90
Shredder	96	440	536
Total assets retained for own use	2,143	1,520	3,663

Current Assets

Donation - Fine City Chorus	946	0	946
Total debtors	946	0	946

Liabilities

National Lottery Grant	0	21,606	21,606
------------------------	---	--------	--------



Pat Brickley, Chairperson

Date: 11th March 2024

NORFOLK SEN NETWORK

England & Wales - Charity number 1044353

Accounts

TRUSTEES REPORT 2021-22

This has been a much more difficult year for fundraising. Demand on our service has been greater than ever with us having to close our service to new parents for the first time and a large proportion of our funding being spent on the complexity of which tribunals have become. Our most grateful thanks to our long term funders the Yapp Charitable Trust, the Paul Bassham Charitable Trust and Norfolk Freemasons with match funding from their Grand Charity.

We continued to operate from our Old Catton office and selling books from outside the office.

Our most grateful thanks to Danielle, Nikki, Claire and Karla for their dedication in supporting families.

We took on a stand at the Norfolk Show for the first time this year to inform visitors of our work.

Special thanks to our Ambassador, Claire Brooks, landlady of the Walnut Tree Shades for promoting the work of our charity and raising funds through a Music event, Quiz nights and a collecting tin.

We took part in several events over the year, including for the first time one at Brundall Coop, Sprowston Fete and several Christmas Fayres.

As we came to the end of this Financial Year two of our long standing Trustees resigned. Our thanks to them for their work over several years.

Thank you to Chris Jay for preparing our accounts and Kim Mayfield for auditing the accounts.

We celebrated our 35th Anniversary at the Belvedere Centre at the end of October and look forward to securing and consolidating our funding over the coming months.

We face more challenges in the coming year with both Mediation meetings and Tribunals scheduled for several months ahead and schools adopting more stringent behaviour policies leading to more exclusions. We are increasing our level of fundraising to try and meet need.

Patricia Brickley

Patricia Brickley
Chairperson

8th March 2023

NORFOLK SEN NETWORK

Membership @ 31.10.22 : 65 supported members
68 free email members

Ambassador: Claire Brooks of the Walnut Tree
Shades

Trustees: Pat Brickley (Chair)
Jane Merrett (resigned October
22)
Chris Jay (Treasurer)
Annika Musgrave (resigned
October 22)
Jonathan Rackham

Employees: Nichola Corcoran
Development Worker
Claire Cumberlidge Development
Worker
Karla Cooper Development
Worker
Danielle Cann
Administrator/Helpline

Bankers: Barclay's plc, St. Stephens Branch,
Norwich

- ❖ Norfolk SEN Network has been supporting parents of children with special educational needs throughout Norfolk since 1987. Since the introduction of the Children & Families Act 2014, we now support young people themselves (16 to 25) who have special educational needs to find the right educational provision.

- ❖ Our Committee is elected in accordance with our constitution from our Membership each year at our Annual General Meeting

Our aims: are to help *all* parents of children with special educational needs to find the education which is right for their child and to support young people 16 to 25 to find the right provision to meet their needs.



Section A

Independent Examiner's Report

**Report to the trustees/
members of**

Norfolk SEN Network

**On accounts for the year
ended**

31 October 2022

**Charity no
(if any)**

1044353

Set out on pages

One to three

I report to the trustees on my examination of the accounts of the above charity ("the Trust") for the year ended 31/10/2022.

**Responsibilities and
basis of report**

As the charity trustees of the Trust, you are responsible for the preparation of the accounts in accordance with the requirements of the Charities Act 2011 ("the Act").

I report in respect of my examination of the Trust's accounts carried out under section 145 of the 2011 Act and in carrying out my examination, I have followed the applicable Directions given by the Charity Commission under section 145(5)(b) of the Act.

**Independent
examiner's statement**

I have completed my examination. I confirm that no material matters have come to my attention in connection with the examination which gives me cause to believe that in, any material respect:

- accounting records were not kept in accordance with section 130 of the Act or
- the accounts do not accord with the accounting records

I have no concerns and have come across no other matters in connection with the examination to which attention should be drawn in order to enable a proper understanding of the accounts to be reached.

Signed:

Kim Mayfield

Date:

7 MARCH 2023

Name:

Mr Kim Mayfield

**Relevant professional
qualification(s) or body
(if any):**

Chartered Accountant

Address:

10 Hillside

Chedgrave

Norwich

NORFOLK SEN NETWORK
 Receipts and Payments Account
 12 months ended 31 October 2022

	Note	Unrestricted Funds £	Restricted Funds £	Total Funds £	Last Year 2021 £
Receipts					
Subscriptions		1,045	0	1,045	860
Tribunal fees		0	810	810	885
Delegate fees		0	0	0	0
Donations	1	11,286	4,000	15,286	24,761
Fundraising and other income	2	8,045	0	8,045	3,300
Interest received		5	0	5	2
Total receipts		20,381	4,810	25,191	29,808

Payments					
Wages and payroll fees		0	20,818	20,818	19,380
Commission		275	200	475	1,009
Professional fees		1,277	0	1,277	1,897
Fundraising costs		2,082	0	2,082	1,672
Insurance		0	354	354	537
Subscriptions & membership		70	0	70	268
Books and leaflets		1,194	0	1,194	27
Telephone		0	1,224	1,224	1,283
Postage		20	16	36	146
Stationery & printing		2,266	363	2,629	2,583
Travel		42	985	1,027	519
Office rent		3,750	0	3,750	3,475
Training & food		144	1,465	1,609	2,824
Sundry		1,255	75	1,330	258
Sub total		12,375	25,500	37,875	35,878

Asset and investment purchases					
Printers		128		128	407
Mobile phone				0	109
Gazebo				0	260
Flags				0	599
Sub total		128	0	128	1,375

Total payments		12,503	25,500	38,003	37,253
-----------------------	--	---------------	---------------	---------------	---------------

Net receipts/(payments)	7,878	(20,690)	(12,811)	(7,445)
Transfers between funds	(19,084)	19,084	0	0
Cash funds last year end	14,304	1,919	16,223	23,667
Cash funds this year end	3,098	313	3,411	16,222

NORFOLK SEN NETWORK

Notes to Receipts and Payments Account
31st October 2022

1. Donations

Coop
Yapp Charitable Trust
Norfolk Freemasons
A Musgrave prize donation
Masonic Charitable Trust
K Quinton-Hicks
Anonymous Trust
Paul Banham CT
Collection tins
Lottery and Just Giving

Other

Unrestricted Funds	Restricted Funds	Total
£	£	£

1376		1376
3000		3000
2500		2500
250		250
2500		2500
258		258
0	2000	2000
0	2000	2000
113		113
766		766
0		0
0		0
0		0
	0	0
524	0	524
11286	4000	15286

2. Fundraising and Other Income

Beer Festival
Book sales
Thorpe Xmas Fayre
Fine City Chorus

Other

7337		7337
65		65
175		175
130		130
		0
338		338
8045	0	8045

NORFOLK SEN NETWORK

Statement of Assets and Liabilities as at 31 October 2022

	Unrestricted Funds	Restricted Funds	Total
Cash Funds			
Bank Accounts	3,098	313	3,411
Total cash funds	3,098	313	3,411

**Assets retained for the
charity's own use**

At cost

Laptop and printers	1,505	657	2,162
Website	329	0	329
Flags	599		599
Gazebo	260		260
Total assets retained for own use	2,693	657	3,350

Current Assets

Debtors	0	0	0
Total debtors	0	0	0

Liabilities

Expenses	0	0	0
----------	---	---	---

Patricia Brickley, Chairperson

8th March 2023

TRUSTEES REPORT 2021-22

This has been a much more difficult year for fundraising. Demand on our service has been greater than ever with us having to close our service to new parents for the first time and a large proportion of our funding being spent on the complexity of which tribunals have become. Our most grateful thanks to our long term funders the Yapp Charitable Trust, the Paul Bassham Charitable Trust and Norfolk Freemasons with match funding from their Grand Charity.

We continued to operate from our Old Catton office and selling books from outside the office.

Our most grateful thanks to Danielle, Nikki, Claire and Karla for their dedication in supporting families.

We took on a stand at the Norfolk Show for the first time this year to inform visitors of our work.

Special thanks to our Ambassador, Claire Brooks, landlady of the Walnut Tree Shades for promoting the work of our charity and raising funds through a Music event, Quiz nights and a collecting tin.

We took part in several events over the year, including for the first time one at Brundall Coop, Sprowston Fete and several Christmas Fayres.

As we came to the end of this Financial Year two of our long standing Trustees resigned. Our thanks to them for their work over several years.

Thank you to Chris Jay for preparing our accounts and Kim Mayfield for auditing the accounts.

We celebrated our 35th Anniversary at the Belvedere Centre at the end of October and look forward to securing and consolidating our funding over the coming months.

We face more challenges in the coming year with both Mediation meetings and Tribunals scheduled for several months ahead and schools adopting more stringent behaviour policies leading to more exclusions. We are increasing our level of fundraising to try and meet need.

Patricia Brickley

Patricia Brickley
Chairperson

8th March 2023

NORFOLK SEN NETWORK

England & Wales - Charity number 1044353

Accounts



**Norfolk SEN
Network**

Registered charity no. 1044353

Helping access special needs education

W: www.norfolksennetwork.org E: norfolksennetwork@hotmail.co.uk

Helpline: 01603-300178 9.30am to 12 noon Monday to Friday
answerphone at all other times

Annual Report & Accounts 2020-2021



Norwich CAMRA Beer Festival 25 – 30 October 2021

Registered address:

2A Eastern Crescent, Thorpe St Andrew, Norwich, Norfolk, NR7 0UE

Office address:

Catton Therapy, 62 Catton Chase, Old Catton, Norwich, Norfolk, NR6 7AS

TRUSTEES REPORT 2020-21

This has been yet another exceptionally busy year as we came to terms of continuing to operate throughout the pandemic. We moved into shared office space in Catton Chase, Old Catton at the start of November 2020 to provide our new Administrator/Helpine Worker with a safe place to work from and our members a safe place to visit. This has proved very successful. Our thanks to Katy for giving us this opportunity and to the Norfolk Community Foundation and the Alderman Norman Charitable Trust for funding the rent of our office for the first year. Thanks to Danielle, our Administrator/Helpine Worker for organizing and running the office. We are now selling books from outside the office which is raising a steady income.

Our Development Workers have been working at capacity throughout the year as tribunals became more complex and the SEND Tribunal Office expected more from them. Special thanks to Nikki and Claire for their dedication to obtaining the provision and placement for so many children. A large proportion of our funding was spent on supporting parents through Tribunals.

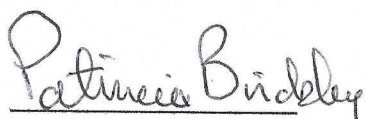
We were able to hold our first event in over a year in September. It was good to be back meeting families and raising much needed funds. We were the Coop's Charity of the year for 2020/21, which gave us added publicity and raised £1,300 for the charity. We were also able to hold a soft toy tombola in their Sprowston Road store. As we came to the end of this financial year being chosen as CAMRA's Charity of the Year for the Norwich Beer Festival was a much added bonus and raised £8,050 for us, enabling us to balance the books. We invested in promotional flags, pull up banners and a new gazebo for events.

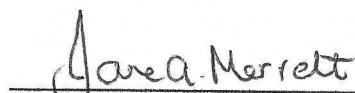
Our most grateful thanks to our long term funders the Yapp Charitable Trust, the Paul Bassham Charitable Trust and the Norfolk Community Foundation for continuing to help us financially.

Special thanks to our Ambassador Claire Brooks, landlady of the Walnut Tree Shades who continued to raise funds for us through Quiz Nights and collecting tins, for promoting the work of the charity and for letting us use the Walnut Tree Shades to hold Coffee Mornings throughout the summer months.

Our expenditure exceeded our funds raised by 20% this year and it's thanks to the Norwich Beer Festival at the end of this financial year that we were able to break even. Additional funds will have to be raised in the coming year to enable us to continue to operate at the same level. Thank you to our wonderful team of enthusiastic volunteers.

Thanks to Chris Jay for preparing our accounts and to Kim Mayfield for auditing them.


Patricia Brickley


Jane Merrett

Joint Chairs

18th March 2022

Development Workers

“We are forever grateful for the help we have received from Norfolk SEN Network. We would not have been able to find our way through all the complicated process of applying for a specialist setting for our son, then the appeal to the Tribunal. You took on the burden of the paperwork. Thank you NSENN for being our light and guide during this difficult journey to a successful outcome. We would not have done it without you.”

- Marta & Lukasz Dorszewski



Nikki Corcoran
Development Worker



Claire Cumberlidge
Development Worker

The complexity of cases is forever increasing, many parents come to us when they are at “crisis point”, needing immediate input, which causes us considerable work as we try to resolve issues.

Our Development Workers give support and advice to parents of children with special educational needs on a wide variety of issues including:

- Checking through their draft EHC Plan to ensure it meets the child’s needs
- Attend Annual Reviews and other meetings
- Attend Mediation meetings
- Lodge Tribunal papers and represent parents at hearings

Registered address: 2A Eastern Crescent, Thorpe St Andrew, Norwich, Norfolk, NR7 0UE
Office address: Catton Therapy, 62 Catton Chase, Old Catton, Norwich, Norfolk, NR6 7AS

- Disability Discrimination appeals
- Exclusions and Independent Review Panel meetings
- Transport and Admission appeals
- Ombudsman and other complaints

During the last year they have supported parents of:

- 4 under 5's
- 37 children under 11
- 25 young people 11 to 16
- 4 young people 16 to 25
- 2 adults with SEN over 25
- A total of 72 individual children/young people
of which 22 were girls and 50 were boys

➤ An increase of 50% supported on last year

- Diagnosis: 35 ASD/Autism
 - 5 ADHD
 - 5 Dyslexic
 - 4 Dyspraxia
 - 4 Anxiety
 - 3 Down Syndrome
 - 2 PTSD
 - 2 Mixed Neurodevelopment disorder
 - 2 Hearing Difficulties
 - 2 SEMH
 - 1 Williams syndrome
 - 1 Cerebral Palsy

- Ethnicity: 56 White British
 - 4 White Polish
 - 2 Eastern European
 - 2 African
 - 1 Russian

Registered address: 2A Eastern Crescent, Thorpe St Andrew, Norwich, Norfolk, NR7 0UE
 Office address: Catton Therapy, 62 Catton Chase, Old Catton, Norwich, Norfolk, NR6 7AS

Our Development Workers have attended:

- 6 Annual Review meetings
- 3 FSP meeting
- 2 Given support in applying for an EHC Plan
- 3 Amended 6 EHC Plans
- 3 Helped with Secondary transfers
- 21 parents looking for Special School placements for their children
- 3 Supported children who were out of school
- 2 issues with Transport
- 6 other meetings with schools
- 1 Disability Discrimination Appeal
- 1 Bullying
- 3 Exclusions
- 1 Obtained compensation for a parent through a complaint

They have attended Local Authority meetings:

- Working Statement of Action meetings on Co-Production, EHC Plans and 18+ provision
- Covid 19 meetings with the LA and other voluntary organisations
- PEASS and Transition review meetings
- The Local Offer Forum
- SENDIASS
- NASMA
- Voluntary Sector Forum
- SEND Roadshows
- SEND Strategy
- SEN Ops
- Home to School Transport
- Norfolk Accessibility Strategy

Registered address: 2A Eastern Crescent, Thorpe St Andrew, Norwich, Norfolk, NR7 0UE
Office address: Catton Therapy, 62 Catton Chase, Old Catton, Norwich, Norfolk, NR6 7AS

Helpline

Is staffed from 9 am to 12 noon Monday to Friday with answerphone at other times.



Danielle Cann, Administrator/Helpine Worker

Answered 72 calls from parents on 32 different subjects wanting advice on:

- how to help their child when things were going wrong at school
- advice on how to obtain specialist provision for their child
- support at a meeting
- their child had been excluded
- their child was coming up to transition
- they were moving to Norfolk and had a child with SEND
- they needed help lodging their case for a tribunal hearing
- they needed support at Mediation
- were a professional wanting to help a child with SEND
- moving to Norfolk needing help finding a school
- needing help with Draft Plan
- needing help applying for an EHC plan
- enquiring about having an EHCP in a mainstream school
- information on how NSENN could help a parent in a school
- needing support at an Annual Review
- EOTAS
- School refusal
- Transport

Registered address: 2A Eastern Crescent, Thorpe St Andrew, Norwich, Norfolk, NR7 0UE
Office address: Catton Therapy, 62 Catton Chase, Old Catton, Norwich, Norfolk, NR6 7AS

- Behavioral issue
- Bullying
- Legal Aid
- Back classing
- Assault by a teacher
- Making a complaint
- Short Breaks
- School Nurse
- Part-time timetables
- Familiar Adult
- EHCP helpline number
- Sleep disorder
- 16+ provision
- Administration calls

Thank you to the anonymous trust who donated £2,000 towards the running of our Helpline.

We also took enquiries through our Webmail, Facebook and emails

Facebook: 1378 likes 1,458 followers an increase of 8% on 2019/20

Twitter: 718 followers @NorfolkSENnet

Tribunals

“Thank you from the bottom of our hearts, you have done more for us than we could have imagined in obtaining the right educational placements for our boys.”

- Jenny & Phil Stafford

Lodged 21 + 1 DDA appeal

Of which:

- 15 were for Special School places
- 2 were for Independent placements
- 2 were on Transport
- 2 were refusal to issue a Plan

Registered address: 2A Eastern Crescent, Thorpe St Andrew, Norwich, Norfolk, NR7 0UE

Office address: Catton Therapy, 62 Catton Chase, Old Catton, Norwich, Norfolk, NR6 7AS

Training

Our training programme was put on hold as we were unfortunately not able to carry out live training and although we tried training by zoom with ACE Education our trainers, take up was not well supported as parents felt they were “all zoomed out” and simply didn’t have the time to participate due to helping their children with their school work. We will be restarting ‘live’ training this coming spring.

Our thanks to the Geoffrey Watling Charity and Ashtons Legal for funding our training programme.

Four staff and trustees took part in IPSEA’s national Conference in March 21 bringing them up to date with Tribunal procedures and law changes.

Danielle our Helpline Worker did a days Level 1 training in September and earlier in the year a Social Media course.

Both Nikki and Claire completed their Level 3 IPSEA training.

Staff and trustees completed Safeguarding training and First Aid courses. Trustees also attended Norfolk Community Foundations information session on “being a trustee.”

Awareness Raising

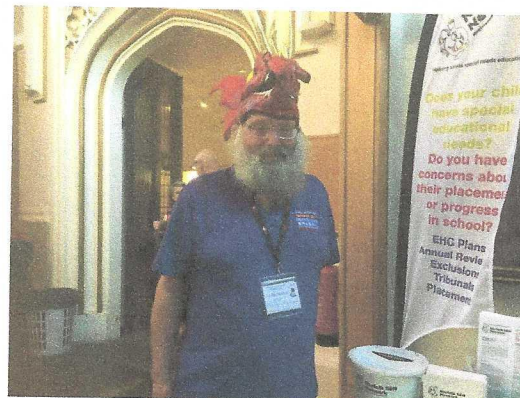
We have invested in new promotional flags, pull up banners and a new gazebo to use at events. Bought promotional pens and trolley keyrings.

Registered address: 2A Eastern Crescent, Thorpe St Andrew, Norwich, Norfolk, NR7 0UE
Office address: Catton Therapy, 62 Catton Chase, Old Catton, Norwich, Norfolk, NR6 7AS

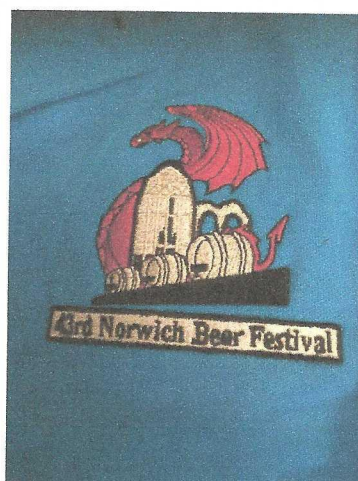
NORWICH CAMRA BEER FESTIVAL 25 to 30 OCTOBER 2021
raised £8,051 for our charity



Customers in The Halls

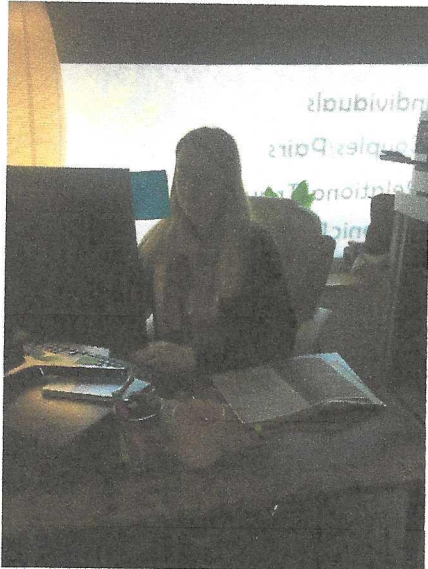


Ron the Hat Man



Our Office

Catton Therapy, 62 Catton Chase, Old Catton, NR6 7AS



The charity moved into its first shared office space during lockdown in November 2020 thanks to funding from the Norfolk Community Foundation and more recently the Alderman Norman Charitable Foundation. This has enabled us to keep our Administrator safe and provide a base where our members and members of the public can drop things off. We now have a bookcase outside the office from which we sell books, providing a steady income for the charity.

Newsletter



We have produced a bi-monthly newsletter informing members and non-members of national and local information, including events we are holding.

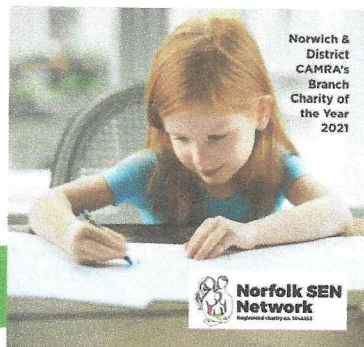
Registered address: 2A Eastern Crescent, Thorpe St Andrew, Norwich, Norfolk, NR7 0UE
Office address: Catton Therapy, 62 Catton Chase, Old Catton, Norwich, Norfolk, NR6 7AS

Coffee Mornings

Do you have a child with special educational needs?

Are you concerned about your child's progress in school or is their placement meeting their needs?

Come and have a coffee and chat with our team



Thanks to our Ambassador, Claire Brooks, who opened the Walnut Tree Shades on Wednesday mornings to enable us to hold Coffee Mornings to meet parents who were experiencing difficulties with their child's education and enable us to meet them in safe surroundings. We gave every parent who visited us a "goody bag" of useful literature, a face mask, hand sanitizer and biscuits.

Thanks to Norfolk Community Foundation's Little Acorns Community Fund for funding these events and the Coop for supplying the biscuits.

In November we joined Twinkles SEN Activity Days to give advice on education to their parents.

Fundraising

Special thanks to the Norfolk Community Foundation and our long-term funders the Yapp Charitable Trust, Paul Bassham Charitable Trust, the Alan Boswell Group for their financial support.

Registered address:

2A Eastern Crescent, Thorpe St Andrew, Norwich, Norfolk, NR7 0UE

Office address:

Catton Therapy, 62 Catton Chase, Old Catton, Norwich, Norfolk, NR6 7AS

Sarah Hull's Race to the Stones Ultra Marathon raised £1,709.75



The finish line!



Thank you Oscar, Leo and Olive for helping at our fundraising events

Coop Charity of the Year November 20 to October 2021



It's what we do

Our most grateful thanks to the Coop for choosing us as one of their Charities of the Year, displaying our information on the shop screens and pairing us up with the Cooperative Funeral Service on Thunder Lane which displayed our information and the Coop Store on Sprowston Road where we held a Soft Toy Tombola in September 2021 raising £85. They also donated biscuits for our Coffee Mornings. Members of the Coop donated £1,300 to our charity over the year supporting parents to obtain the right educational provision for their children.

Race to the Stones



Sarah Hull, the Auntie of one of the children we secured a place in a Special School for, ran in an Ultra Marathon over two days raising £1,709.75 for the charity. Sarah said:

“My nephew is autistic and has additional complex special needs. Norfolk SEN Network helped my sister to get him the education he deserves and into the school that is right for him. I needed to give something back so I needed to take on a challenge that was going to push me so I could raise as much money as possible for them as a thank you.”

Registered address: 2A Eastern Crescent, Thorpe St Andrew, Norwich, Norfolk, NR7 0UE
Office address: Catton Therapy, 62 Catton Chase, Old Catton, Norwich, Norfolk, NR6 7AS

Coop Charity of the Year 2020-21 raising over £1,300 for our charity



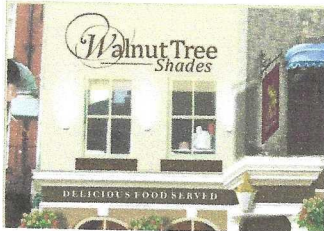
It's what we do



They gave us biscuits for our Coffee Mornings too!



Walnut Tree Shades



Thank you to Claire Brooks, our Ambassador, for continuing to fundraise for us throughout 2020/21. They raised £ 400 through Quiz Nights, Musical Bingo and in their collecting tin.

Duke of Wellington



Special thanks also to Kay Edwards and staff at the Duke of Wellington who raised £ 3,713.65 from 2019-21 for our charity.

Archant Cash for Charities



Thank you to those who helped collect EDP/EEN tokens through Cash for Charities. We received £74 towards the purchase of our new gazebo.

Registered address: 2A Eastern Crescent, Thorpe St Andrew, Norwich, Norfolk, NR7 0UE
Office address: Catton Therapy, 62 Catton Chase, Old Catton, Norwich, Norfolk, NR6 7AS

Give as you Earn

Special thanks to Ian for making a monthly donation to our charity through Payroll Giving.

In Memory Giving

We are now registered with In Memory Giving. Thanks to donations made in memory of Kerri-Marie Brickley we were able to fund two new pull-up banners.

Broadland Heart Lottery



Our charity is registered with the Broadland Heart Lottery which anyone can buy tickets for and support our charity. This year it raised **£223** towards the support of parents in tribunal status.

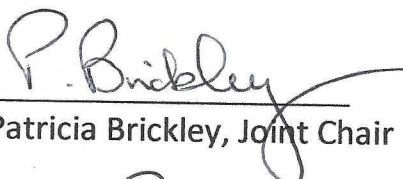
Special Thanks

To those parents who have made donations in appreciation of the support we have given them.

Future Plans

Now that we have established the need for an office base, it is our ambition to raise sufficient funds to take on larger premises which we can use for training and a meeting place for our Development Workers to safely meet parents.

We also need to stabilize our fundraising to balance our income and expenditure over the coming year.


Patricia Brickley, Joint Chair

18th March 2022

Registered address: 2A Eastern Crescent, Thorpe St Andrew, Norwich, Norfolk, NR7 0UE
Office address: Catton Therapy, 62 Catton Chase, Old Catton, Norwich, Norfolk, NR6 7AS

NORFOLK SEN NETWORK

Receipts and Payments Account
12 months ended 31 October 2021

	Note	Unrestricted Funds £	Restricted Funds £	Total Funds £	Last Year 2020 £
Receipts					
Subscriptions		860	0	860	675
Tribunal fees		0	885	885	550
Delegate fees		0	0	0	0
Donations	1	3,106	21,655	24,761	26,975
Fundraising and other income	2	3,300	0	3,300	4,005
Interest received		2	0	2	12
Total receipts		7,268	22,540	29,808	32,217

Payments

Wages and payroll fees		0	19,380	19,380	9,424
Commission		1,009	0	1,009	975
Professional fees		1,232	665	1,897	599
Fundraising costs		1,672	0	1,672	424
Insurance		0	537	537	537
Subscriptions & membership		268	0	268	70
Books and leaflets		27	0	27	0
Telephone		0	1,283	1,283	1,054
Postage		128	18	146	184
Stationery & printing		2,176	407	2,583	2,366
Travel		381	138	519	735
Office rent		0	3,475	3,475	0
Training & food		227	2,597	2,824	2,367
Sundry		258	0	258	53
Sub total		7,378	28,500	35,878	18,788

Asset and investment purchases

Printers		199	208	407	0
Mobile phone		109		109	0
Gazebo		260		260	
Flags		599		599	0
Sub total		1,167	208	1,375	0

Total payments		8,545	28,708	37,253	18,788
-----------------------	--	--------------	---------------	---------------	---------------

Net receipts/(payments)		(1,277)	(6,168)	(7,445)	13,429
Transfers between funds		(2,719)	2,719	0	0
Cash funds last year end		18,303	5,365	23,668	10,239
Cash funds this year end		14,307	1,916	16,223	23,668

NORFOLK SEN NETWORK

Notes to Receipts and Payments Account
31st October 2021

	Unrestricted Funds £	Restricted Funds £	Total £
1. Donations			
Helen Jeffries	30		30
Virgin Money Giving	533		533
Alderman Norman C Trust-office rent		2331	2331
The Yapp Charitable Trust		3000	3000
Paul Bassham Charitable Trust		3000	3000
NCF Grant		4949	4949
Ashtons legal		550	550
Alan Boswell Group		5000	5000
AVIVA - Give as you earn	200		200
Heart Lottery	223		223
Coop Charity of the year	150		150
PayPal - Giving fund	138		138
Anonymous Trusts	1000	2500	3500
N Balashova	150		150
In Memory Giving (Kerri Brickley)	210		210
WTS collection tins	160		160
Duke of Wellington collection tins	169		169
Archant cash for Charities	74		74
Other	70	325	395
	3106	21655	24761
2. Fundraising and Other Income			
J Hull, Race to the Stones	1710		1710
Stalls and Facebook sales	343		343
Beer Festival	799		799
Book sales	38		38
Wroxham Fishing Club	410		410
Other	0		0
	3300	0	3300
Total	6406	21655	28061

NORFOLK SEN NETWORK

Statement of Assets and Liabilities as at 31 October 2021

		Unrestricted Funds	Restricted Funds	Total
Cash Funds	Bank Accounts	14,304	1,919	16,223
	Total cash funds	14,304	1,919	16,223

Assets retained for the charity's own use

At cost

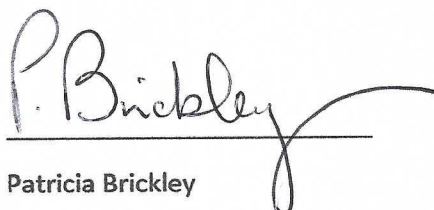
Laptop phone and printers	1,377	657	2,034
Website	329	0	329
Flags	599		599
Gazebo	260		260
Total assets retained for own use	2,565	657	3,222

Current Assets

Debtors - Norwich Beer Festival	7,235	0	7,235
Total debtors	7,235	0	7,235

Liabilities

Expenses	0	0	0
----------	---	---	---



Patricia Brickley

Joint Chair

18th March 2022



Section A

Independent Examiner's Report

**Report to the trustees/
members of**

Norfolk SEN Network

**On accounts for the year
ended**

31 October 2021

**Charity no
(if any)**

1044353

Set out on pages

One to Three

I report to the trustees on my examination of the accounts of the above charity ("the Trust") for the year ended 31/10/2021.

**Responsibilities and
basis of report**

As the charity's trustees, you are responsible for the preparation of the accounts in accordance with the requirements of the Charities Act 2011 ("the Act").

I report in respect of my examination of the Trust's accounts carried out under section 145 of the 2011 Act and in carrying out my examination, I have followed all the applicable Directions given by the Charity Commission under section 145(5)(b) of the Act.

**Independent
examiner's statement**

I have completed my examination. I confirm that no material matters have come to my attention in connection with the examination which gives me cause to believe that in, any material respect:

- the accounting records were not kept in accordance with section 130 of the Charities Act; or
- the accounts did not accord with the accounting records; or
- the accounts did not comply with the applicable requirements concerning the form and content of accounts set out in the Charities (Accounts and Reports) Regulations 2008 other than any requirement that the accounts give a 'true and fair' view which is not a matter considered as part of an independent examination.

I have no concerns and have come across no other matters in connection with the examination to which attention should be drawn in this report in order to enable a proper understanding of the accounts to be reached.

Signed:

Kim Mayfield

Date:

17/03/2022

Name:

Mr Kim Mayfield

**Relevant professional
qualification(s) or body
(if any):**

Chartered Accountant

Address:

10 Hillside

Chedgrave

Norwich

NORFOLK SEN NETWORK

England & Wales - Charity number 1044353

Accounts



Norfolk SEN Network

Registered charity no. 1044353

Helping access special needs education

W: www.norfolksennetwork.org E: norfolksennetwork@hotmail.co.uk

Helpline: 01603-300178 9.30am to 12 noon Monday to Friday
answerphone at all other times

Annual Report & Accounts 2019-2020



Thank you to Claire and Dale Brooks of the Walnut Tree Shades for their support

Registered Address: 2A Eastern Crescent, Thorpe St Andrew, Norwich, Norfolk, NR7 0UE

TRUSTEES REPORT

Like most charities, this has been a very difficult year with regard to funding, but one of our busiest year's yet. Since lockdown in March 2020 the charity has been inundated with requests for support from parents desperately needing someone to help them obtain the education that their child needed. Our Development Workers have been lodging Tribunals consistently over the year, together with a new way of working – Tribunals by Google meets. There has not been any consideration given for those parents who do not have adequate technology to do so. We are most grateful to AVIVA's Community Fund for helping us raise £1,000 to produce a video for parents on the procedures over the internet.

Having been chosen as the City of Ale's Charity of the Year for the second consecutive year, we were looking forward to helping promote the event again, but like all our other activities, lockdown put an end to this event. The last events we were able to hold were Christmas events in December 2019.

Its thanks to our long-term funders the Yapp Charitable Trust who doubled our grant and the Norfolk Community Foundation for their Covid 19 grants that we were able to continue to fund the salaries of our staff and look forward to additional workers joining us alongside the opening of our first office to help us cope with the increasing demand for our support.

Special thanks to Claire Brooks, our Ambassador, who continued to raise funds for us at the Walnut Tress Shades through Quiz Nights, Musical Bingo sessions and a collecting tin on the bar from when pubs opened in May until their closure again in December.

A special mention also to Kay and her team at the Duke of Wellington who also had collecting tins on their bar and gave us the contents of their wishing well.

Special thanks to Nikki and Clare for their dedication in helping families through the minefield of legislation. Nikki has now completed her Level 3 IPSEA training and Claire Level 2.

Thanks to Chris Jay and Kim Mayfield for preparing and auditing our accounts.

Patricia Brickley

Patricia Brickley

Chairman

12 March 2021

Development Workers

“Without your help I couldn’t have done it, together we got the EHC Plan”
- Jo W.

Our Development Workers give support and advice to parents of children with special educational needs on a wide variety of issues including:

- Checking through their draft EHC Plan to ensure it meets the child’s needs
- Attend Annual Reviews and other meetings
- Attend Mediation meetings
- Lodge Tribunal papers and represent parents at hearings
- Disability Discrimination appeals
- Exclusions and Independent Review Panel meetings
- Transport and Admission appeals
- A Spanish child through the European Convention of the Rights of the Child whose parents wanted him to start off his education at his local village school

During the last year they have supported parents of:

- 2 under 5’s
- 26 children under 11
- 5 young people 11 to 16
- 4 adults with SEN over 25
- A total of 37 individual children of whom 5 were girls and 32 were boys

They have attended:

- 6 Annual Review meetings
- Amended 6 EHC Plans
- Helped with 3 Secondary transfers
- 24 parents looking for Special School placements for their children
- Supported 4 children who were out of school
- Supported a Spanish child through the European Convention of the Rights of the Child to obtain education in his local village school in Northern Spain

They have attended Local Authority meetings:

- Ofsted and Working Statement of Action meetings on Co-Production, EHC Plans and 18+ provision
- Covid 19 meetings with the LA and other voluntary organisations
- PEASS and Transition review meetings
- The Local Offer Forum
- SENDIASS
- NASMA
- Voluntary Sector Forum
- SEND Roadshows
- SEND Strategy

Helpline

Is manned from 9.30am to 12 noon Monday to Friday

Answered **105** calls from parents who wanted advice on

- how to help their child when things were going wrong at school
- advice on how to obtain specialist provision or their child
- support at a meeting
- their child had been excluded
- their child was coming up to transition
- they were moving to Norfolk and had a child with SEND
- they needed help lodging their case for a tribunal hearing
- they needed support at Mediation
- where a professional wanting to help a child with SEND

We also took enquiries through our Webmail, Facebook and emails

Facebook: **1233** likes an increase of 10% on 2018/19

Webmail: **60** enquiries an increase of 45% on 2018/19

Emails: **136** new enquiries

Tribunals

“Thank you for all your support throughout this very difficult journey”

- IH

➤ **Lodged** 21 + 1 DDA appeal

Of which:

- 15 were for Special School places
- 2 were for Independent placements
- 1 was for a Residential placement
- 1 was on Transport
- 2 were refusal to issue a Plan

Training

Our thanks to the Geoffrey Watling Charity for funding our training programme, which we were unfortunately not able to carry out live but have been continuing through zoom with ACE Education as trainers.

Awareness Raising

Twitter: **786** likes @NorfolkSENnet

Fundraising

Like most charities we lost around 1/3rd of our income from March 2020. We weren't able to take part in our usual events over the summer or our usual Christmas Fayres, which reduced our income by a further £1,000. The last events we held were in December 2019 which raised approximately £700.



Special thanks to the Norfolk Community Foundation and our long-term funders the Yapp Charitable Trust who doubled our grant to help us maintain our staff through Covid 19.

Registered Address: 2A Eastern Crescent, Thorpe St Andrew, Norwich, Norfolk, NR7 0UE

Thanks to the Geoffrey Watling Charity for funding our training programme.



Thank you to the AVIVA Community Fund for helping us raise £1,000 to make a video for parents about how tribunals are conducted on zoom.

Thank you to Claire Brooks, our Ambassador, for continuing to fundraise for us through May to December 2020 raising £ 420 through Quiz Nights, Musical Bingo and in their collecting tin.

Special thanks also to Kay Edwards and staff at the Duke of Wellington who raised £181 in their collecting tins and emptied their wishing well raising an additional £81.

Thank you to Liam Corcoran, our Chairman who ran a virtual London Marathon raising £1,500

Thank you to 2 special little girls Esmee and Beth for raising £29 for the charity with a book sale outside their house.

A Christmas gift of £5,000 from the Paul Bassham Charitable Trust helped fund salaries in lockdown.

A trust, who wishes to remain anonymous, donated £2,000 towards the running of our Helpline.

Future Plans

It has been our ambition to open an office from which our Administrator/Helpline Worker can work permanently.

We also need to recruit an additional Development Worker to take on some of the workload and reduce Pat's level of case work to enable her to concentrate on stabilizing funding for the charity.

We hope we will be able to get back to holding events during the 2020/21 financial year.

Patricia Brickley

Patricia Brickley, Chairman

12 March 2021

NORFOLK SEN NETWORK
 Receipts and Payments Account
 12 months ended 31 October 2020

	Note	Unrestricted Funds £	Restricted Funds £	Total Funds £	Last Year 2019 £
Receipts					
Subscriptions		675	0	675	430
Tribunal fees		0	550	550	150
Delegate fees		0	0	0	0
Donations	1	17,422	9,553	26,975	22,660
Fundraising and other income	2	4,005	0	4,005	1,752
Interest received		12	0	12	4
Total receipts		22,114	10,103	32,217	24,996

Payments					
Wages and payroll fees		0	9,424	9,424	6,880
Commission		975	0	975	338
Professional fees		299	300	599	303
Fundraising costs		424	0	424	535
Insurance		0	537	537	537
Subscriptions & membership		70	0	70	412
Books and leaflets		0	0	0	299
Telephone		0	1,054	1,054	1,006
Postage		50	134	184	100
Stationery & printing		1,830	536	2,366	2,102
Travel		47	688	735	1,419
Room hire, Training & food		1,227	1,140	2,367	1,584
Sundry		53	0	53	195
<i>Sub total</i>		4,975	13,813	18,788	15,710

Asset and investment purchases	<i>Sub total</i>	0	0	0	0
---------------------------------------	------------------	---	---	---	---

Total payments	4,975	13,813	18,788	15,710
-----------------------	-------	--------	--------	--------

Net receipts/(payments)	17,139	(3,710)	13,429	9,286
Transfers between funds	(8,124)	8,124	0	0
Cash funds last year end	9,288	951	10,239	953
Cash funds this year end	18,303	5,365	23,668	10,239

NORFOLK SEN NETWORK

Notes to Receipts and Payments Account
31st October 2020

	Unrestricted Funds £	Restricted Funds £	Total £
1. Donations			
Dave Chaplin	478		478
Sandie Cst-Martinez	15		15
Yapp Charitable Trust	3000	3000	6000
Paul Bassham CT	5000		5000
Professor Rayner	40		40
Norfolk Community grant	7980		7980
Anonymous Trust	0	2000	2000
Haken Torungullari	60		60
Geoffrey Watling Charity	0	3500	3500
Claire Jackson	10		10
WTS collection tins	420		420
Duke of Wellington collection tins	181		181
City of Ales collection tins	95		95
Aviva Crowdfunder		1003	1003
Other	143	50	193
	17422	9553	26975

2. Fundraising and Other Income

Marathon	1572		1572
Stalls	175		175
City of Ales	1862		1862
Duke of Wellington wishing well	84		84
Duke of Wellington fishng day	240		240
Other	73		73
	4005	0	4005

NORFOLK SEN NETWORK

Statement of Assets and Liabilities as at 31 October 2020

	Unrestricted Funds	Restricted Funds	Total
Cash Funds			
Bank Accounts	18,300	5,367	23,667
Total cash funds	18,300	5,367	23,667

Assets retained for the charity's own use
At cost

Laptop and printers	1,069	449	1,518
Website	329	0	329
Gazebo	113	631	744
Total assets retained for own use	1,511	1,080	2,591

Current Assets

Debtors	0	0	0
Total debtors	0	0	0

Liabilities

Expenses	0	0	0
----------	---	---	---

Patricia Brickley
.....
Patricia Brickley, Chairman

12 March2021



Section A

Independent Examiner's Report

**Report to the trustees/
members of**

Norfolk SEN Network

**On accounts for the year
ended**

31 October 2020

**Charity no
(if any)**

1044353

Set out on pages

One to Three

I report to the trustees on my examination of the accounts of the above charity ("the Trust") for the year ended **31/10/2020**.

**Responsibilities and
basis of report**

As the charity trustees of the Trust, you are responsible for the preparation of the accounts in accordance with the requirements of the Charities Act 2011 ("the Act").

I report in respect of my examination of the Trust's accounts carried out under section 145 of the 2011 Act and in carrying out my examination, I have followed the applicable Directions given by the Charity Commission under section 145(5)(b) of the Act.

**Independent
examiner's statement**

I have completed my examination. I confirm that no material matters have come to my attention in connection with the examination which gives me cause to believe that in, any material respect:

- accounting records were not kept in accordance with section 130 of the Act or
- the accounts do not accord with the accounting records

I have no concerns and have come across no other matters in connection with the examination to which attention should be drawn in order to enable a proper understanding of the accounts to be reached.

Signed:

Kim Mayfield

Date:

12/03/2021

Name:

Mr Kim Mayfield

Address:

10 Hillside

Chedgrave

Norwich