



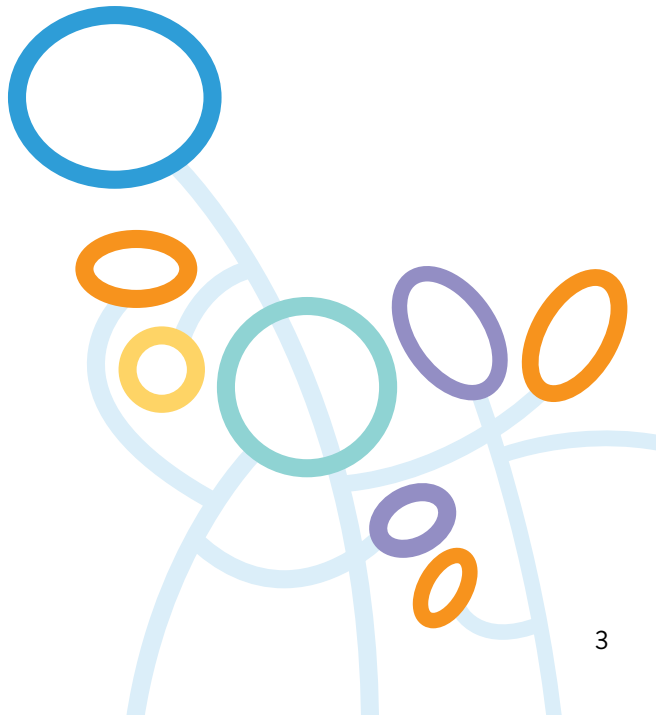
THE GRAND APPEAL ANNUAL REPORT 2022





CONTENTS

Report of the Trustees for the Year Ending 31 March 2022	4
Letter from the Chairman	5
Who We Are	6
Your Fundraising Stories: Community and Events	8
Your Fundraising Stories: Companies	10
Your Fundraising Stories: Philanthropy	12
Shine Bright for Bristol Children's Hospital	14
Our Impact: Accommodation and Support for Families	18
Our Impact: Innovation and Equipment	23
Our Impact: Patient Wellbeing Through Arts, Music, and Play	25
Our Impact: Enhancing the Hospital Environment	28
Our Impact: Funding Research and Education to Improve Patient Care	30
Our Impact: Supporting Hospital Staff	32
The World of Gromit Unleashed	34
Financial Review and Reserves	37
What's Next for Wallace & Gromit's Grand Appeal?	40
From the Director	42
Structure, Governance, and Management	43
Statement of the Trustees Responsibilities	47
Report of the Independent Auditors	48
Consolidated Statement of Financial Activities	51
Consolidated Balance Sheet	52
Consolidated Cash Flow Statement	53
Notes to the Financial Statement	55



REPORT OF THE TRUSTEES

FOR THE YEAR ENDING 31 MARCH 2022

The Trustees, who are also the directors of the charity for the purpose of the Companies Act 2006, present their report with financial statements of the charity for the year ended 31 March 2022. The Trustees have adopted the provision of Accounting and Reporting by Charities Statement of Recommended Practice applicable to charities preparing their accounts in accordance with the Financial Reporting Standard applicable in the UK (FRS102) effective 1 January 2019.

REFERENCE AND ADMINISTRATIVE DETAILS

Registered charity no 1043603
Registered company no 3008531

TRADING SUBSIDIARY

Cracking Enterprises Ltd company no 03296361

CONTACT DETAILS AND REGISTERED OFFICE

30-32 Upper Maudlin Street, Bristol, BS2 8DJ
grandappeal.org.uk
hello@grandappeal.org.uk
0117 9273888

TRUSTEES

Jos Moule – Chairman
Simon Cooper
Angie Last
Mike Lea
Mike Norton

COMPANY SECRETARY AND DIRECTOR

Nicola Masters

PATRONS

Nick Park CBE
Peter Lord CBE
David Sproxton CBE

MEDICAL ADVISORY COMMITTEE

Dr Giles Haythornthwaite
Mr Mike Carter
Dr James Fraser
Dr Anoo Jain

BANKERS

Lloyds Bank PLC
Bristol, BS1 4AQ

AUDITORS

Moore
Bristol, BS1 4UL

LAWYERS

Veale Wasbrough Vizards
Bristol, BS1 4AQ

LETTER FROM THE CHAIRMAN

Welcome.

On behalf of the Board of Trustees of Wallace & Gromit's Grand Appeal, I'm delighted to present our Annual Report and Accounts for the year ending March 2022.

As we move into our 27th year of support for Bristol Children's Hospital and the Neonatal Intensive Care Unit (NICU), we reflect on the legacy we've built together and look forward to our partnership developing with exciting new projects over the next few years. Through the unprecedented challenges of the last two years of the coronavirus pandemic, to the vast improvements in pioneering healthcare for children, Wallace & Gromit's Grand Appeal and the children's hospital have always moved in lockstep. As the partnership moves from strength to strength, our ambitions will always be to support the welfare of patients, support staff, and to address some of the most urgent, strategic needs of the hospital.

Over multiple decades, we've built a flourishing programme of arts, music and play; invested heavily in patient, family and staff wellbeing; provided extensive support for pioneering facilities and life-saving equipment; and, of course, we operate three family accommodation houses with 28 rooms for families of seriously ill patients 24 hours a day, 365 days a year. Over the last few years, we've expanded and grown in each area of our Primary Purpose activity to ensure our activity is fit for purpose and appropriate for paediatric healthcare needs in 2022. But we also look at the strategic long-term needs of the hospital and NICU through our funding from re-skilling staff through the Nurse Education programme to medical research into coronavirus, neurorehabilitation in children and our partnership with the internationally acclaimed 3D printing team at the University of Bristol to further research into paediatric cardiac health.

Over the next few years, we're planning to expand our portfolio of support for the children's hospital to include a new development that will transform facilities for patients in long-term treatment and care

as well as trying to help with the complex challenge of staff recruitment and wellbeing by providing short-term accommodation.

Our work is only possible thanks to the incredible support of our donors and supporters, our community of Gromit Unleashed fans, the management and staff of Bristol Children's Hospital and the Neonatal Intensive Care Unit as well as our team of staff and volunteers on the ground in each of our five sites. To you all, our grateful thanks.

Our 27-year partnership with Aardman Animations is unparalleled, and we are incredibly grateful to our Patrons Nick Park, Peter Lord, David Sproxton as well as Aardman MD Sean Clarke for allowing us to use the Wallace & Gromit characters to spearhead our fundraising.

We hope you enjoy reading our 2022 Annual Report, and we ask that you continue your generous support for our charity over the months and years to come.

Jos Moule,
Chairman
Wallace & Gromit's Grand Appeal





Wallace & Gromit's Grand Appeal

Since 1995, we've worked in partnership with Bristol Children's Hospital as its dedicated charity to fund a multi-million-pound portfolio of investment.

Bristol Children's Hospital is a national centre of excellence. It treats over 100,000 patients each year from across the entire South West and South Wales region and is home to some of the most exciting advancements in global paediatric healthcare. Babies, children and young adults with highly complex medical conditions – from rare genetic disorders, neurological conditions and congenital heart disease to traumatic injuries, cancer and kidney disease – are cared for around the clock by leaders in their respective fields.

From the moment a child arrives at the hospital, our support workers offer comfort and advice; we give parents and siblings a free, comforting place to stay; provide daily music therapy sessions and arts and play activities; and fund the pioneering equipment and research that save lives.



Cots for Tots

Cots for Tots is the dedicated charity for St Michael's Neonatal Intensive Care Unit (NICU). Initially created in 2010 as a fundraising appeal, our cause received an overwhelming response, quickly bringing together a vast family of fundraisers.

St Michael's Neonatal Intensive Care Unit is the only unit in the South West providing the highest level of care to critically ill and premature babies from across the region. The unit cares for over 800 babies a year, from those born as early as 23 weeks to babies requiring life-saving treatment when they are born full term.

Cots for Tots ensures the hospital can deliver the very best care by funding lifesaving equipment, pioneering research and technology, family support and additional facilities to help save tiny lives.



TOGETHER, WE AIM TO PROVIDE 360-DEGREE SUPPORT TO ENABLE THE HOSPITAL TO OFFER THE BEST POSSIBLE TREATMENT AND CARE FOR THEIR YOUNG PATIENTS.

Our fundraising

While the impact of coronavirus could still be felt, we have been amazed by the enthusiasm of our fundraising family. From companies to philanthropists and schools to community groups and individuals, it's a privilege to have the support of so many people across the region.

Together, we have one vision for the future: continuing to ensure every sick child and baby from the South West has access to the very best care, 365 days a year.

Our operations and services

We have diversified our funding streams to bring in the most advanced medical equipment, including the UK's first-ever Cardiac Hybrid Theatre in a paediatric setting, an intraoperative 3T MRI Scanner – one of only three in children's hospitals across Europe – and a ground-breaking neuro-robot, which helps neurosurgeons perform major operations with pinpoint precision.

By harnessing our pioneering technology, expert staff can take part in, and lead on, ground-breaking clinical trials – making sure Bristol Children's Hospital and the Neonatal Intensive Care Unit remain at the forefront of paediatric healthcare, improving childhood health for generations to come.

Independently, we run three family accommodation facilities and employ over 10 specialist support staff who work on the ground in the hospital to ensure every aspect of hospital life is centred on the well-being of the young patients and their families. We also work with the hospital to create a child-friendly environment and a programme of arts, music and play therapies to ensure the very best patient experience.

This is only possible thanks to our incredible community of fundraisers.

“Working in close partnership with families while providing the highest quality care for sick babies is at the centre of what we do in the NICU at St Michael's. Our longstanding partnership with Cots for Tots is a crucial part of achieving this, and we are extremely grateful. Supporting families, who come from across the South West, to be a close part of their babies' NICU journey has a hugely positive impact on wellbeing and bonding, which lasts long beyond their inpatient stay. Be it through 'home from home' accommodation at Cots for Tots House, secure video messaging through vCreate for when parents can't be at the bedside, or ensuring every baby has their NICU diary to connect families to every day of their journey, Cots for Tots really support our families at a very difficult time. Furthermore, funding for state-of-the-art equipment for our unit supports us in providing exceptional care in the rapidly evolving world of neonatology. Cots for Tots help us go from strength to strength in making lives better for sick babies and their families.”

Adam Smith-Collins,
Clinical Lead for St Michael's
Neonatal Intensive Care Unit

“I have been privileged to work with Wallace & Gromit's Grand Appeal for several years. As a psychologist, families often tell us what helps them feel supported and safe. Every project we have taken to the charity, they have welcomed and worked hard to make it happen. This includes beautifully designed resources, orientation videos, listening events, redecorating quiet rooms, digital diaries (with a video feature to help families stay in close contact with each other), more music therapy time, and the wonderful hospital rings.

Wallace & Gromit's Grand Appeal has always been clear: their focus is the experience of families and each and every one of the projects they have worked with me on has received beautiful feedback from families to say the difference they have made.”

Dr Vanessa Garratt,
Consultant Clinical Psychology Lead
for Cardiac and Critical Care

Our community of fundraisers let nothing stop them from showing their support for Bristol Children's Hospital. This year, we've seen epic cycles, recipe books and sponsored hair chops. Take a look at just some of their amazing achievements...

Supporters from across the South West helped Wrong Trousers Day return with a bang, including **Nutty Noah** – children's entertainer and star of CBeebies. Nutty Noah hosted a Wrong Trousers Day-themed family fun day, attracting over 300 families. Event participation saw a huge **300% increase**.



Introducing 'Grand Bakes & Cupcakes'. This scrumptious recipe book was the brainchild of the 'Bristol quilters and friends' who were inspired to help after seeing the NHS' extraordinary response to coronavirus. All proceeds will support sick children and their families at Bristol Children's Hospital.

Team Grand Appeal certainly made their miles matter at the **Great Bristol Run** in September, after raising over **£50,000**.



Sisters **Neve and Quinn** raised **£101** from a cracking Christmas stall for St Michael's Neonatal Intensive Care Unit.



This team of absolute heroes raised over **£100,000** in memory of a little boy called Jude and still show no signs of stopping. 'JOGLE for Jude', made up of 18 family and friends, cycled over 900 miles from John O' Groats to Land's End.

As part of 'JOGLE for Jude's' mammoth fundraising effort, eight-year-old **Annabelle** chopped off her long locks, earning her **£1,200** in sponsorship!



Our brand-new virtual event, **Grand Series**, saw budding athletes swim, cycle and run their way to nearly **£20,000**.



Now here's a way to celebrate. Little **Elliott's** birthday went off with a bang after his family raised **£270** for Bristol Children's Hospital.

- In December, **Sara** could be found in Bristol's Henleaze Lake swimming in cold temperatures. After facing the freeze, she raised over **£2,700** to say thanks to the children's hospital for the care of her son.

- Dan's daughter spent months in the children's hospital recovering from a brain bleed. Wanting to help more children in need, **Dan** laced up his trainers and ran his way to **£1,407**.

We're lucky to have the support of so many businesses and organisations across Bristol and beyond. Their determination and enthusiasm never ceases to amaze us. Here's to their fantastic fundraising efforts!



After encouraging customers to round up their purchases, **The Entertainer** celebrated raising a staggering **£650,000** for Bristol Children's Hospital. How amazing is that?

“Many of our customers and staff have personal experience of using the hospital services and have seen first-hand the difference it makes. Thank you to all our customers in the South West for helping us to support Wallace & Gromit's Grand Appeal.”

Karen Emery – Area Manager for The Entertainer in the South West



Andy from **Smith Consult Ltd** and his pals tested their pedal power from Land's End to John O' Groats, raising **£5,300** in the process.

Bristol Blue Glass launched a brand-new range raising money for the Neonatal Intensive Care Unit at St Michael's Hospital alongside their hugely popular Grand Appeal range. Handmade, unique, and beautifully Bristolian, their charms and baubles make the perfect present or keepsake.



COMPANIES

Jack Cooper, from **Cooper Associates Wealth Management**, raised a fantastic **£50,000** for St Michael's Neonatal Intensive Care Unit following the birth of his daughter. Far from home, they found a place to stay at **Cots for Tots House** and have vowed to support us ever since.



“I can never thank the doctors, nurses and everyone else who helped and supported Ethan during his time in Bristol and beyond enough. The money raised by my ride, and other charity activities undertaken by my UKHO colleagues, will be used to help other children and families who find themselves at Bristol Children's Hospital.”

Chris Perring, UKHO employee

Bristol business **Boxlocal**, run by sisters Kate and Bethan, surpassed **£5,000** raised from their donations per gift box sold and a raffle.



Throughout July, a team from **Remove My Car Ltd**, including Managing Director Steve, completed their very own 1,000 km challenge. Proving fundraising is a group effort, friends and family even joined them along the way, helping them reach a mammoth **£10,000**.



When Chris' nephew spent time at Bristol Children's Hospital, he knew he wanted to help somehow. His employer, the **UK Hydrographic Office (UKHO)**, soon chose us as their Charity of the Year and fundraised a whopping **£15,000**. Go, team!

Thanks to the generosity of charitable trusts, foundations, and philanthropists we put Bristol Children's Hospital at the centre of change - creating pioneering facilities and ensuring the hospital remains at the forefront of children's healthcare, saving lives into the next decade and beyond.

We extend our heartfelt thanks to many funders for their support, including:

- B&Q Foundation
- Berni Family Charity Trust
- Joyce Fletcher Charitable Trust
- The National Lottery Community Fund
- The Openwork Foundation
- The Underwood Trust

Legacies



Some of our supporters are truly selfless. We want to express our enormous thanks to everyone who chose to leave a gift in their Will to Bristol Children's Hospital and St Michael's Neonatal Intensive Care Unit. Your generosity means we can give sick children a brighter future.

Leaving a donation in your Will to Wallace & Gromit's Grand Appeal has never been easier - this year, we partnered with Will-making experts, **Simpson Solicitors and Farewill** to

offer donors a chance to write theirs free of charge and we've been truly humbled by the response we received.

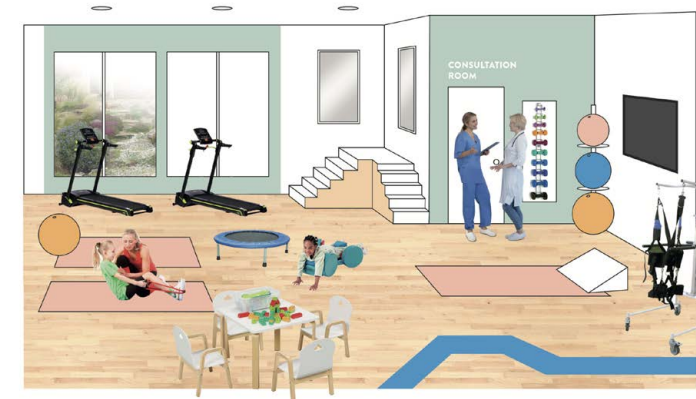
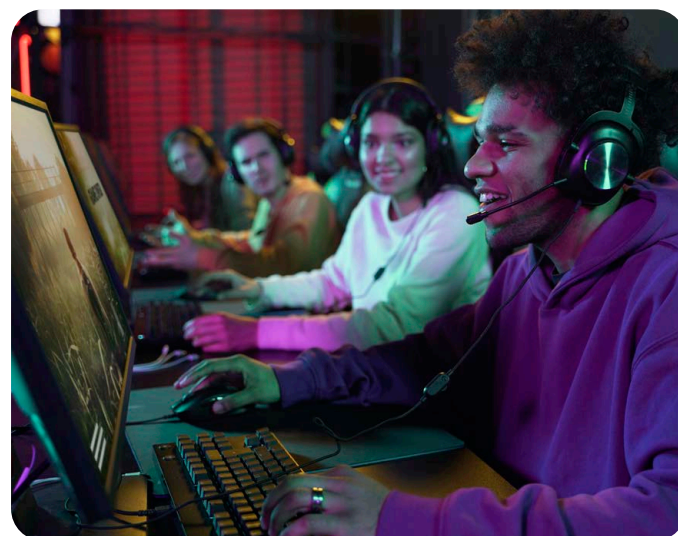
Highlights

For the fifth year in a row, we proudly took part in The Yogcast's epic festive fundraiser, **Jingle Jam**. The team stream day and night for two weeks to support 12 hand-picked charities in what is officially the world's biggest charity gaming event!

Year on year, we're totally blown away by the generosity of the gaming community and the dedication and hard work from the team to make Jingle Jam such a success.



**THIS YEAR'S EVENT
RAISED A SPECTACULAR
£265,000 FOR BRISTOL
CHILDREN'S HOSPITAL.**



Artist visuals for Jingle Jam Building

Money raised each year will fund **Jingle Jam Building**. This ground-breaking facility will be the first of its kind in the UK.

The unique facility will provide specialist therapy for young patients and family accommodation under one roof.

Imagine arriving in Bristol, an unfamiliar city, while your child needs life-saving or life-changing treatment. With Bristol Children's Hospital serving the whole of the South West and South Wales, this is the reality for many families that pass through its doors.

Some stay for days, but many stay for weeks or even months while their child receives specialist care. Jingle Jam Building will mean these parents can be together with their child during the last steps of their recovery.

Our partnership with **The Underwood Trust** continues to pave the way for revolutionary cardiac care at the children's hospital, through the Wallace & Gromit's Grand Appeal 3D printing service. Led by Dr Giovanni Biglino and Professor Massimo Caputo, this pioneering project which prints exact replicas of patients' hearts, has already had an enormous impact on the 400 children who undergo major heart surgery in Bristol every year. We are hugely grateful to The Underwood Trust for their support of this innovative and important project.



“We are establishing a solid programme of 3D printing and bioprinting research in Bristol, with support from The Underwood Trust. From looking at children's hearts in 3D to cutting-edge lab work to explore possible improvements to cardiac surgery, we are working to support patients, families and clinical teams.”

Dr Giovanni Biglino, Associate Professor in Bioengineering at Bristol Medical School

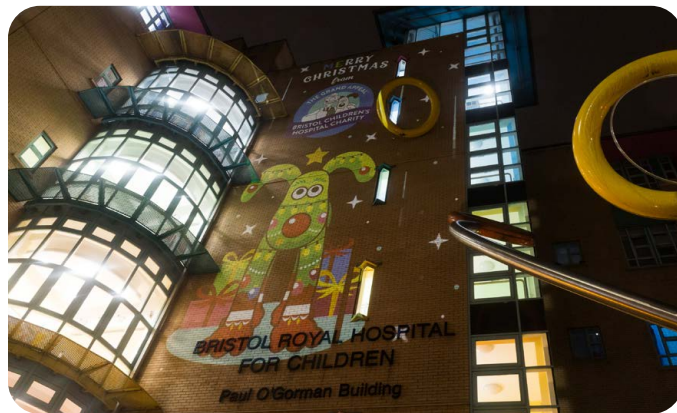
SHINE BRIGHT FOR BRISTOL CHILDREN'S HOSPITAL

For the first time, we called on the people of Bristol and beyond to 'shine bright' for their children's hospital and end 2021 on a high.

Bringing together community, corporate and philanthropic donors, our 'Shine Bright for Bristol Children's Hospital' campaign saw a month of fantastically festive fundraising.

Illuminating Bristol Children's Hospital

Kicking off the countdown to Christmas in true Grand Appeal style, a dazzling display projected onto Bristol Children's Hospital brought cheer to staff, patients and families. Featuring seasonal stars and Gromit Unleashed sculpture, 'Noël', the special projection was the centrepiece of our seasonal campaign.



Switched on at dusk every day in December, the lights brought sparkle and shine to the city centre.

Taunton-based hydraulic engineers, Rotec Hydraulics Ltd, were the kind donor behind the star of the show, Christmas canine 'Noël'.

Meanwhile, other businesses from Bristol and beyond, as well as our selfless major donors, all donated towards their very own star.

This unique project raised nearly £40,000. Our thanks go to all our supporters who helped bring this unique project to life.

Time to celebrate



To celebrate the grand switch-on of our festive display, we hosted a virtual event in November. With so many in-person events cancelled due to coronavirus, we've missed being able to see our amazing fundraising family. Their endless support means the world to us. To show our appreciation, we invited them to hear from our patrons, trustees and staff from the children's hospital and NICU in our first ever virtual get together.

The event commemorated 20 years since the opening of the new Bristol Children's Hospital and showcased our incredibly special partnerships with the hospital and Aardman Animations.

Viewers were even treated to a sneak peek of Aardman's latest Christmas caper, *Robin Robin*, as well as exclusive footage of *Shaun the Sheep*.

“It was wonderful to hear what happens behind the scenes in two incredibly fantastic and important Bristol institutions, Aardman Animations and Bristol Children's Hospital, and to be thanked by two stalwarts of these organisations, the medical director of the intensive care unit and Peter Lord. Wallace & Gromit's Grand Appeal is a multifaceted charity – something that's hard to convey usually – so to virtually meet a broad range of spokespeople was a rare opportunity that brought this vital cause to life.”

Paula Banks, Grand Appeal Ambassador



Community Christmas displays

The people of the South West well and truly got behind 'Shine Bright for Bristol Children's Hospital' with over 30 people creating their own festive display to raise money. Think 3D Santas, cardboard cut-outs, reindeer, log characters and fairy lights.

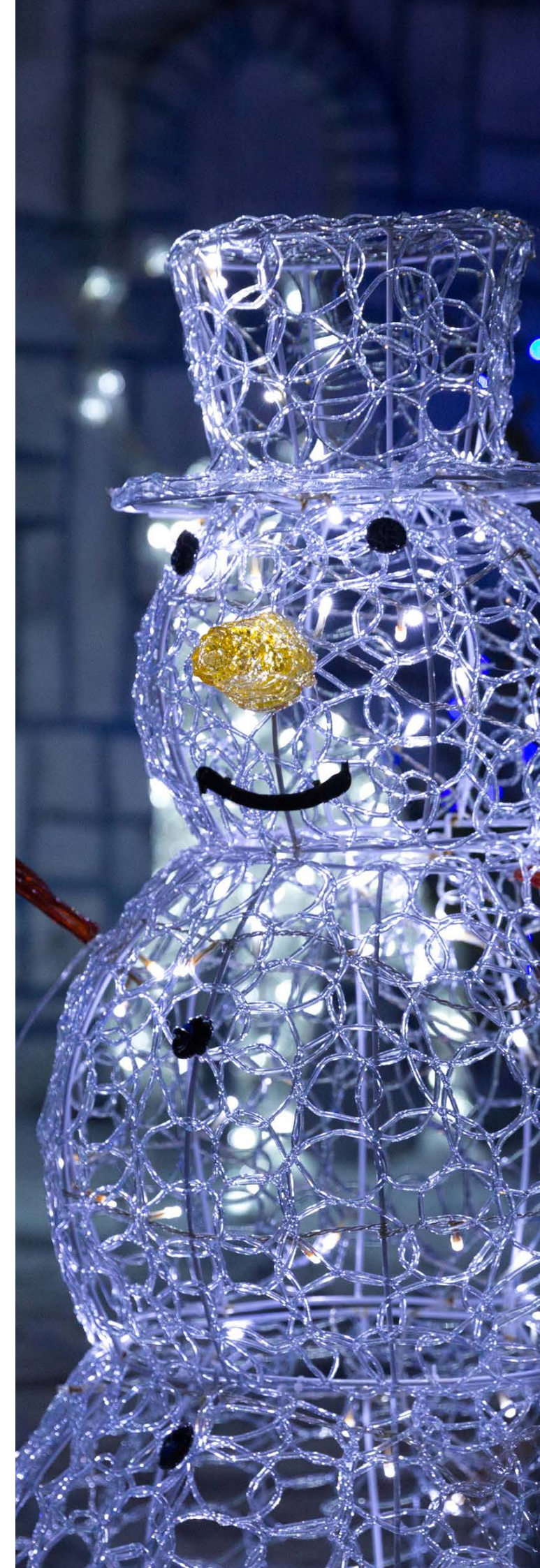


Highlights included the fantastic touring display, Santa Float, which visited Bristol and the surrounding areas throughout December with a special guest in tow... 'Jingles' Gromit.

And how could we forget the Brailsford family? Bristol's most festive house has been supporting Bristol Children's Hospital for 15 years. Once again, they transformed their house into a winter wonderland for all to enjoy.

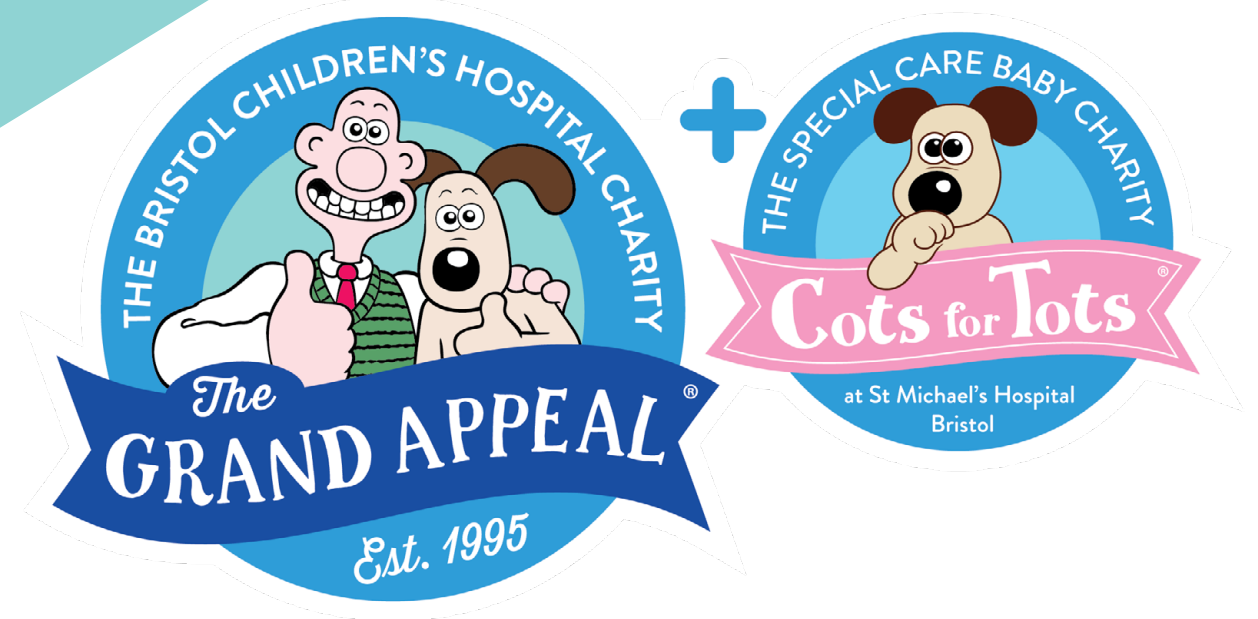


Collectively, these festive fans raised a whopping £58,000 for sick children and babies.





Lianna and twins Polly and Trixie,
former Cots for Tots House residents



OUR IMPACT

- **ACCOMMODATION AND SUPPORT FOR FAMILIES**
- **INNOVATION AND EQUIPMENT**
- **PATIENT WELLBEING THROUGH ARTS, MUSIC AND PLAY**
- **ENHANCING THE HOSPITAL ENVIRONMENT**
- **FUNDING RESEARCH AND EDUCATION TO IMPROVE PATIENT CARE**
- **SUPPORTING HOSPITAL STAFF**

OUR IMPACT

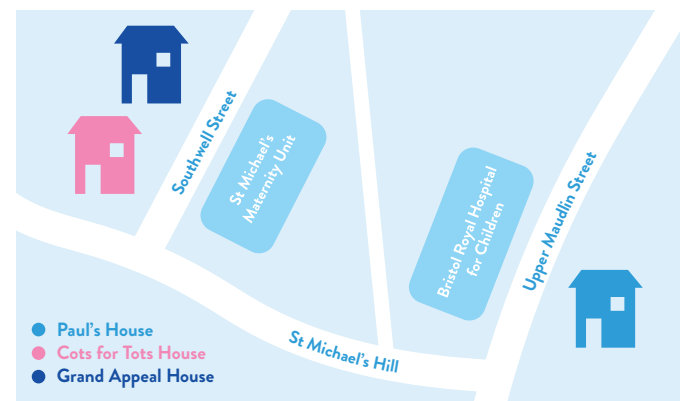
ACCOMMODATION AND SUPPORT FOR FAMILIES

Our family support service offers practical, emotional, and financial help to families when they need it most.

Family accommodation

Across our three houses, Cots for Tots House, Paul's House, and Grand Appeal House, we provide 28 ensuite rooms for families from across Bristol, the South West and South Wales.

The houses are close to each hospital, helping families avoid the extra financial burdens of travel and accommodation costs. Most importantly, parents can relax outside the hospital's clinical environment and get the vital rest they need, with the reassurance that they are only moments away from their sick child.



c.£500,000
the value of our family support services
in 2021, with **an average saving of
£1,740 per family.** As valued by the
University of Bristol.

With the huge impact of the pandemic, our family accommodation proved more vital than ever; we were the only charity in Bristol to keep this essential service running throughout when other charity accommodation providers closed their doors.



In March, we completed a significant refurbishment of Cots for Tots House. The house, which opened in 2012, is now home to 11 ensuite rooms for families to enjoy and an updated communal space and kitchen to dine and relax in.

Helen, who stayed at Cots for Tots House, said:

“Staying at Cots for Tots House has been a lifeline too. After I was initially discharged and with nowhere to go, Gerry and I had to return home. I can't imagine what life would be like if we had to keep making that journey every day. I am by Bertie's side each day – it's where I need to be to stay sane. Thankfully, having a comfy room at Cots for Tots House lets me do that.”



**FROM 2021 TO 2022,
WE HOUSED 352 FAMILIES.**



Cots for Tots House



Grand Appeal House



Paul's House

The Value of Wallace & Gromit's Grand Appeal's Family Accommodation and Support Programme

Between the one-on-one support parents receive from our Family Support Practitioners and access to a safe, comfortable environment in our accommodation; we strive to relieve some of the emotional and financial burden families of a sick child face. In a new report, the University of Bristol has revealed our services' incredible impact.

£1,477,484

The total amount of money families staying with us from 2019 – 2021 saved

Top three regional savings 2021:

£85,396 Gloucestershire

£83,028 Devon

£56,684 Cornwall



““We were handed a lifeline by Cots for Tots. This incredible charity gave us a safe place to stay. There was a bed, a TV, a fridge, a kitchen; everything we needed to live day-to-day. Best of all, we were only 30 seconds away from Louella.”

Jack, father of Louella

““When I told Katie and Bobby about my other son's birthday before lockdown, which we had missed while we were in hospital, they gave us tickets to Bristol Aquarium, funded by Wallace & Gromit's Grand Appeal. Just when money was tight and life was feeling strange, we could get away from hospital for a few hours to spend time as a family.”

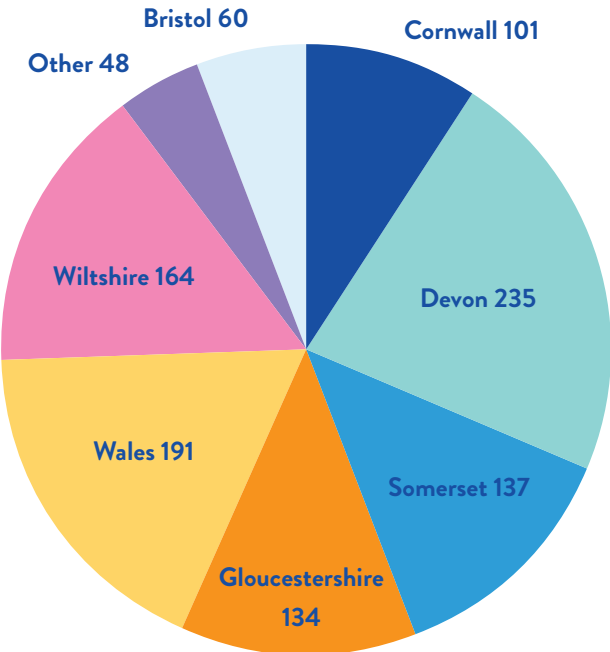
Melissa, mother of Finley



19,966

The total number of nights sleep our accommodation provided families between 2019 – 2021

No. of families staying in family accommodation 2019 – 2021



Bobby, Family Support Practitioner

Family Support Practitioners

When you have a child in hospital, you may need extra support—whether that's psychological, financial, or simply a shoulder to cry on. Wallace & Gromit's Grand Appeal's Family Support Practitioners, Bobby, and Katie, help families cope with the pressures and complexities of having a child in hospital by providing bespoke, family-focused support and advice.

From 2021 to 2022, 397 families reached out to the family support programme for help, the highest number since the service began in 2015.

Due to an increased threshold in community care and the aftermath of the pandemic, Bobby and Katie also help families with complex issues such as employment, safeguarding, substance abuse, or neglect.

Jamie, whose daughter was treated at Bristol Children's Hospital, said:

““For us as a family, the Family Support Service was a massive help. We felt really sorry for our two boys, Max and Joe. We were going to the hospital every day to see Emily, so they suddenly lost both parents.

Bobby, the Family Support Practitioner, was absolutely brilliant. She would send things to Max and Joe at home, so they didn't feel forgotten. She also arranged for us to go to the aquarium or We the Curious with the boys when they came to visit.

She also sought out some grants for us. To begin with, we didn't even think about the financial side because we were so stressed with Emily. Eventually, you have to think about your home and how you will keep that going.

Kelly is a childminder, so had no sick pay or anything like that. We lost a wage straight away. It was a shock. Having to pay for food, drink, and travel on top of losing a salary was horrendous. Bobby even arranged for some new clothes for Emily.

We don't know what we would have done without the Family Support Service. They helped so much.”

Comforts for patients and families

Sometimes the littlest touches can have the biggest impact. We provide families at the Neonatal Intensive Care Unit with several gifts designed to enhance their hospital experience.

This includes Miniboos, small cloth comforters created to help soothe a baby and encourage bonding between parent and baby. Miniboos are particularly effective for our families at the unit when they are unable to hold their premature or critically ill baby.



We fund diaries for families, allowing them to document their hospital journey. With places to store photos and memories, these diaries help parents process the difficult emotions that come with having a special care baby. Plus, they make an invaluable keepsake for families for years to come.

Bonding with your newborn baby inside an incubator can be challenging. That's why we created the 'Tell Me a Story' programme. We give each family a storybook to read aloud to their little one – hearing their parents' voices can improve sleep and shorten their hospital stay.



Ant and Rio, former Cots for Tots House residents



OUR IMPACT

INNOVATION AND EQUIPMENT

We put the top technology in the most talented hands, so patients have the best chance of getting better.

3D Printing

Thanks to support from The Underwood Trust, our 3D printing service led by Professor Massimo Caputo and Assistant Professor Giovanni Biglino from the University of Bristol has continued to help clinical staff, parents, and patients have a clearer understanding of even the most complex cardiac conditions by using specialist equipment to construct models of individual hearts.

Moreover, the service brings together technical and clinical expertise to implement and translate new technologies (both 3D printing and 3D bio-printing) for the benefit of patients at Bristol Children's Hospital.

Despite the challenges posed by the pandemic – limited access to equipment and staffing shortages – the team produced 135 models of hearts. Of these, 105 models were used to improve staff medical knowledge, and 30 models were used to offer children a better understanding of their treatment.

The team has also created a visualisation tool using virtual reality, which has already been demonstrated to cardiologists, surgeons, and imagers. This new tool will now help clinicians to plan complicated surgeries.

“This way of viewing complex anatomy offers unparalleled access. It can be complementary to the 3D prints, which are also incredibly helpful when looking at a complex paediatric case.”

Professor Massimo Caputo, Professor of Congenital Heart Surgery at Bristol Medical School

Dr Michele Carrabba joined the team in December 2021 to begin research into how bio-printing techniques could be used to support the treatment of young patients with congenital heart disease. Bio-printing uses techniques to combine cells and biomaterials to imitate natural tissue, reducing the need for multiple heart surgeries in children.

This exciting development underpins the team's aspirations for the future as a leading unit globally on 3D technologies.

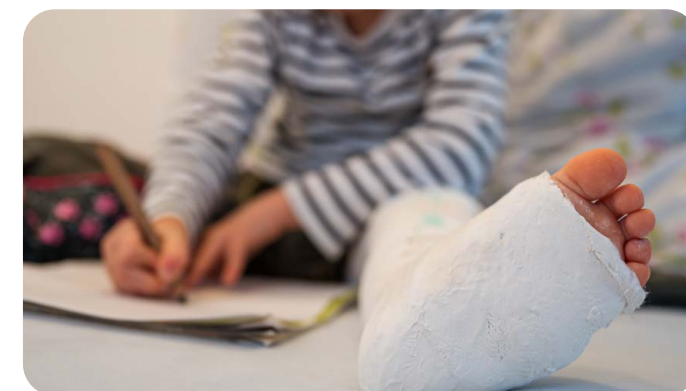
Physiotherapy equipment

The physiotherapy department at Bristol Children's Hospital is a large team helping children with a variety of conditions from brain and spinal problems to cancer.

Thanks to funding from Wallace & Gromit's Grand Appeal, children undergoing therapy now have access to two new pieces of equipment.

A specialised chair to accommodate children with a plaster cast that covers one or both legs from the ankles up to the belly button. With limited mobility, young patients can use the chair to eat and play more freely, reducing stress and the risk of pressure sores.

Often, when families arrive in an emergency, they don't have their own buggy. Or some children fitted with a cast can no longer use theirs. Families can now use a new special needs buggy to help them get around.





Home haemodialysis machine

Imagine being a child told to sit for hours on end in a hospital. Imagine having to do this again and again, every week, every month, every year. This is the reality for many patients at Lighthouse Ward at Bristol Children's Hospital who care for children with kidney conditions because they rely on ongoing dialysis treatment to keep them alive.

Thanks to a home haemodialysis machine, funded by Wallace & Gromit's Grand Appeal, some of these young patients can now receive treatment from the comfort of their own home for the first time. Being cared for at home has a range of benefits: it allows children to attend school more regularly, dialysis can be given daily, and families can spend more time together or parents can return to work.

Beccy, whose son receives regular treatment at the children's hospital, said:

“Six days a week, Noah and I will travel to Bristol Children's Hospital for his dialysis. It feels like we spend more time there than we do in our home. So much so that Noah is known throughout the hospital. His dialysis usually takes around four hours. I'm sure any parent can appreciate how hard it can be to entertain a child, let alone one attached to a machine and confined to a cot.”

Monitoring machines

As the only dedicated children's Emergency Department in the South West, the demand for its services continues to grow.

From 2021 – 2022, the department had 47,216 admissions.

To help make patient care more efficient and effective, Wallace & Gromit's Grand Appeal funded 40 handheld monitoring machines for the department. Now both hardworking doctors and nurses can use essential equipment to observe their young patients and make ongoing checks.

Ventilator

The Wales and West Acute Transport for Children (WATCH) service provides advice and transport for critically ill children from across the South West and South Wales.

414 children were transported by WATCH into critical care units in Bristol and Cardiff and a further 98 children were transferred back to hospitals closer to home from 2021 to 2022.

We have purchased a ventilator to fully equip a stretcher trolley already used by the team, ensuring the team is prepared when equipment needs replacing, and that this vital service can continue to save lives.

Hot cots

Premature and small babies sometimes need a little extra help to manage their body temperature as they adjust to life outside the womb.

Hot cots provide a warm environment while weaning a baby from an incubator into an open cot and allow them to continue gaining weight. Best of all, parents can be much closer to their newborn.

With six new hot cots, the St Michael's Neonatal Intensive Care Unit has more incubators available for very sick babies, while more families can benefit from this fantastic piece of equipment.



OUR IMPACT

PATIENT WELLBEING THROUGH ARTS, MUSIC AND PLAY

Our programme of arts, music and play can be seen and heard throughout Bristol Children's Hospital.

Play therapy

Play is an essential part of child development and is an effective way for children who are in pain or anxious about their stay in hospital to express themselves.

Toys and play equipment are also used to demonstrate procedures to children to help them understand and visualise what will be happening during their treatment.

We fund two roles within the Play Department: Marius our Sensory Play Practitioner and Sian our Oncology Play Assistant. Both deliver imaginative and fun sessions to support a wide range of children.

From 2021 to 2022, our Sensory Play Practitioner delivered 714 one-to-one sensory play sessions at Bristol Children's Hospital.

Whether it's craft materials, computer games or magazines, we make sure the whole Play Department is stocked up all year round by funding a variety of play materials.

Music therapy

Our two amazing music therapists, Claire and Karen, deliver music therapy sessions to over 30 children a week at both Bristol Children's Hospital and St Michael's Neonatal Intensive Care Unit. Their magic music trolley contains lots of exciting instruments and musical toys which children can play with, helping them relax and have fun. Most importantly, music therapy helps these brave young patients express their feelings and emotions during an extremely difficult time.

Marius, Sensory Play Practitioner





Claire, Music Therapist

Emily, whose son was treated at Bristol Children's Hospital, said:

“Claire came to see us just before Christmas last year. We were still trying to process everything that had happened and adjust to this new way of life (plus, juggling looking after our toddler at our home over an hour away).

Our first music therapy session with Claire had me in tears. She managed to connect with Laurie in such an incredible way – Claire responds to his moods or gestures, communicating with him through songs and sounds.

It's something very special to witness. Each time, Laurie is given a platform to express his emotions, helping him develop socially, physically and psychologically. This is crucial when you have spent as much time in hospital as Laurie (nearly five months).

The sessions have helped Nick and I just as much as Laurie. Personally, Claire has empowered me to process the many emotions of having a poorly child. It also encouraged me to look after myself. Claire even inspired me to get out of the hospital and take a run after our first session when she noticed I was wearing gym leggings, and we started chatting!

We are so grateful to Wallace & Gromit's Grand Appeal for funding people like Claire. She has made our journey so much more bearable. I have no doubt she has contributed hugely to Laurie's recovery.”

Arts Unleashed

From immersive theatre sessions and painting workshops, our arts programme, 'Arts Unleashed' extends across Bristol Children's Hospital, aiming to ease the stresses and fears that come with hospital life for patients and their families. At the helm is our Arts Coordinator, Lynne.

Lynne successfully delivered a full virtual Christmas Arts programme in 2021 to make sure that patients didn't miss out on the festive fun during the pandemic. The campaign, which featured nine artists, musicians and entertainers, was viewed 864 times on YouTube.

Forest school

Sunflower Ward provides rehabilitation for children who have suffered brain injuries or spinal injuries. Children can stay on this ward for anywhere between one week to two years, while they regain physical and cognitive skills.

With limited outdoor space and opportunities to play outside at Bristol Children's Hospital, we have funded a pilot of 'Forest School' sessions to give these children a chance to explore, discover, play and enjoy the great outdoors. Sessions included hands-on outdoor learning and interaction with animals, helping children develop confidence and self-esteem in a real-life setting. The pilot proved to be a hit with patients and parents alike!

Millie, former patient at Bristol Children's Hospital



OUR IMPACT

ENHANCING THE HOSPITAL ENVIRONMENT



From updating facilities to creating new ones, we make sure children and their families have the very best hospital experience.

Refurbishment of Ocean Unit

Ocean Unit cares for children undergoing chemotherapy or day surgery, while others need care for a blood disorder or bone marrow transplant. As the demand for its services grow and after nearly 20 years of use, the unit needed refurbishment.

Thanks to a ship-shape makeover with illustrations of beach huts, palm trees and pirate ships, the unit is light and airy, creating an age-appropriate environment that patients deserve.

The transformation will make a huge difference to the nearly 400 children and young people cared for by Ocean Unit each year, giving them a calming environment to receive treatment and a welcome distraction.

Jess, whose son is receiving treatment for a brain tumour, said:

“The refurbishment of Ocean unit has made it feel so much more modern, relaxed and less clinical; everything that you want for a children’s hospital for

both the children and the parents. It’s colourful, bright and Thomas loves talking about all things beach!”



Seahorse Paediatric Intensive Care Unit (PICU) bereavement cubicle

Every day, two children will find themselves in need of the life-saving care of the PICU team at Bristol Children’s Hospital. This incredible unit is one of the largest intensive care units for children in the UK, offering live-saving, round-the-clock care to patients of all ages, from newborn babies to teenagers.

Losing a child is unthinkable but for some families at PICU, it’s a reality they must face. The unit is now home to an updated bereavement cubicle, complete with a sofa bed, utility trolley and mural, giving families an appropriate and comfortable space to spend precious last moments with their child.

Fred, patient at Bristol Children’s Hospital



OUR IMPACT

FUNDING RESEARCH AND EDUCATION TO IMPROVE PATIENT CARE

By funding ground-breaking research today, we can help the children of tomorrow.

Research into neurorehabilitation

We have funded research into developing Bristol Children's Hospital as a centre of excellence for specialist rehabilitation for children after they have had a neurological injury, illness, or diagnosis of a long-term neurological condition.

This work has continued, despite disruption caused by the pandemic and significant progress has been made in several areas, including:

- The creation of an outpatient neurorehabilitation service for children who live within 40 minutes of the hospital. This saved 584 neurorehabilitation bed days in the first six months, which could then be used to admit other patients. It also helped the neurorehabilitation ward stay within its eight-bed capacity, without having to use valuable bed space in other wards. All the children using the outpatient service maintained their goals and, in some instances, their progress improved. Ongoing funding is now being sought to continue this service.

- The introduction of a consultant neurorehabilitation on service rota was proposed, to provide a safe level of supervision for neurorehabilitation in-patients and a consultant-led service for other specialties at the children's hospital, including the Paediatric Intensive Care Unit, by securing funding for an additional locum or temporary consultant. This gave consultant cover for neurorehabilitation patients and other patients referred for review or discussion, during all working days Monday - Friday for 50 weeks of the year. This has now been approved as an ongoing role funded by University Hospitals Bristol and Weston NHS Foundation Trust.



Nurse Educator

We have continued to fund Lucy as a Nurse Educator to support Nursing Assistants across the hospital by investing in their education, training, and development. Lucy ensures that nursing staff feel supported by helping them reach their full potential. The success achieved through our funding has led to this now becoming a permanently funded role by University Hospitals Bristol and Weston NHS Foundation Trust.

“Whether it's regular study days, raising awareness of the hospital's apprenticeship scheme or creating a clear pathway for people to progress, it's my job to not only support Nursing Assistants but to make sure that they have all the tools they need in order to excel in their role. I also review the training they receive both in the classroom and on the wards.”

Lucy Edwards, Nurse Educator

Research into coronavirus

We funded critical research led by specialists at Bristol Children's Hospital and the University of Bristol into the impact of the virus in children under four years old, where severe cases seemed rare. Frontline NHS staff from the children's hospital also participated, providing comparable data on how the coronavirus evolves in healthy adults.

With research needed more than ever, we were proud to support our partners in the fight against



coronavirus. The study was subsequently published in Cell Reports Medicine.

“This study will tell us a lot about how this infection occurs, when people may infect others, when they develop immune responses and, hopefully, how well those responses protect them against reacquiring the infection.”

Adam Finn – Professor of Paediatrics at the University of Bristol and Honorary Consultant at Bristol Children's Hospital

Bronchiolitis educational film

Bronchiolitis is a common chest infection that affects babies and children under two. While it is usually mild, it can leave some children seriously ill.

We worked in partnership with Bristol Children's Hospital to create an educational film about bronchiolitis, highlighting the condition. Providing advice and guidance for parents and carers about how to treat it at home and when to seek support from medical staff, the film has ensured families have easy access to up-to-date information.



OUR IMPACT

SUPPORTING HOSPITAL STAFF

Prioritising the wellbeing of hospital staff has never been so important. We're here to make sure staff feel happy and healthy at work.

Hampers for staff

To support hospital staff facing some of the most difficult circumstances throughout the pandemic, Wallace & Gromit's Grand Appeal has delivered regular wellbeing hampers filled to the brim with tea, coffee, soft drinks, snacks and treats to wards and departments across the hospital. This scheme will now continue beyond the pandemic.

“They are really tasty and lift morale in the children's Emergency Department team. They are a really nice way of saying thank you for the hard work of our team.”

Roisin Begley, Emergency Medicine Consultant at Bristol Children's Hospital

Personalised water bottles

We've worked in partnership with the strategic team at the children's hospital to welcome Weston-super-Mare's children's clinical services into the newly merged University Hospitals Bristol and Weston NHS Foundation Trust (UHBW).



Their Seashore Centre is now partnered with the children's hospital, and as such, we've worked with staff to make them feel appreciated as part of the wider team. Staff were treated to personalised water

bottles, featuring their name and the Seashore logo as part of a range of new initiatives to extend our reach into Weston.

Staff induction, development and away days

We continue to deliver a range of initiatives to support

staff in their roles, including providing induction packs for all new nursing staff, funding development days and providing support for team building away days.

“This is such a vital part of supporting people to become the best team they can be in a challenging job. I was aware of how many extra hours they had worked over the last couple of years to support patient care during Covid. It's surprising how missed breaks, late finishes and early starts adding up over time.”

Zoe Trotman, Dolphin Ward Sister at Bristol Children's Hospital

Personalised uniforms and lanyards

Hardworking medical staff at St Michael's Neonatal Intensive Care Unit are now the owners of new personalised fitted scrubs, meaning they no longer have to settle for mismatched colours, stained or ill-fitting scrubs. While they've boosted team morale, spirit and pride, they've also helped parents identify and differentiate between health care professional roles, making them feel more at ease in a hospital environment.

We also continue to fund personalised lanyards for the children's Emergency Department, which are printed in different colours with staff member names to help parents easily identify different roles within the hospital team.

“Wallace & Gromit's Grand Appeal is a hugely supportive charity not just to families by offering accommodation but to the nursing and medical teams as well. Their monthly hampers of tea and coffee are very well received, and they have helped fund many projects for the hospital that benefit the children and the families we care for. We are so lucky to have such a supportive charity working with us.”

Sarah Britton, Matron Seahorse Paediatric Intensive Care Unit and Lighthouse Ward at Bristol Children's Hospital





THE WORLD OF GROMIT UNLEASHED

gromitunleashedshop.org.uk



Our retail and commercial activity at The Mall at Cribbs Causeway continues from strength to strength. Working closely with the incredible staff at The Mall and our partners at Aardman, the shop continues to flourish despite the challenging economic climate.

We're thrilled that our community of Gromit Unleashed fans and collectors continue to support us – from new figurine releases to bespoke Wallace & Gromit giftware – we are proud to host the largest collection of Aardman merchandise in the UK. Product highlights for the year included new **bespoke design silver Gromit Unleashed jewellery**, a fun **new partyware range for children's Birthdays**, the successful launch of our **rocket-themed figurine A Grand Day Out** and partnering with Aardman to create exclusive **Robin Robin merchandise**.



We collaborated further with our partners at Aardman by celebrating the 25th anniversary of A Close Shave and the birth of the character Shaun the Sheep, running a competition for international Shaun fans to **design a Shaun the Sheep sculpture**, which was subsequently auctioned to raise funds for Wallace & Gromit's Grand Appeal.



Gromit Unleashed artist and **Aardman Director and Designer Gavin Strange** also joined **Jingle Jam** for a live-streamed event. And Gavin's super-sized Gromit sculpture '**Giant GRMT**' went on a staycation to Blackpool pleasure beach, where it's been enjoyed by 1,000s of visitors and spread awareness of Wallace & Gromit's Grand Appeal.



This financial year saw a bumper Christmas at the Gromit Unleashed Shop as Bristol came out of lockdown and looked for ways to celebrate with friends and family. At the store, we hosted a suitably festive display of five Christmas sculptures and welcomed a new sculpture '**Noël**' to our festive flock.



Released as a figurine in November, 'Noël' was one of our fastest-selling figurines of the year and was the face of our charity fundraising Christmas campaign, 'Shine Bright for Bristol Children's Hospital'.

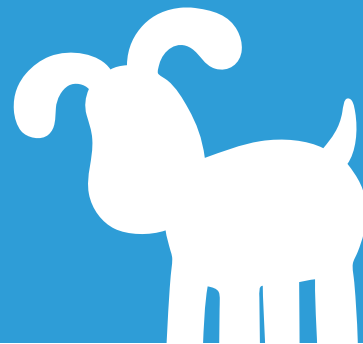
Through our trails and commercial activity, we've built a dedicated fan base for the world of Gromit Unleashed. Bristolians and beyond continue to collect our products and visit our store to be part of it.

We are now preparing to move our store to one of the flagship premises in The Mall – the region's most successful shopping centre - after nearly a decade in our current unit.



We're planning an exciting new exhibition of Gromit, Wallace, Shaun the Sheep and Feathers McGraw sculptures for this bigger space. We know our fans, collectors and community extend far beyond Bristol and the UK, and we hope to welcome Gromit Unleashed and Wallace & Gromit fans from all over the world to the new exhibition.

In partnership with Aardman, we have also become the official retail home of Wallace & Gromit and Shaun the Sheep. From a 10-week pop-up to nearly a decade later, Gromit Unleashed is a vibrant and resilient commercial brand going from strength to strength.



Sculptures and our exclusive Gromit Unleashed product collections are conceived, designed and sourced by our in-house design and retail development team. Our Creative Lead, Emily, creates captivating new sculptures and beautiful new product designs that keep our fans returning to the Gromit Unleashed Shop.

This year we released our **100th** figurine design, and we have sold over **200,000** figurines.



Let's take a closer look at everything Gromit Unleashed.

We source products from around the globe but are incredibly proud to support many UK manufacturers with our non-figurine product. Working closely with our suppliers, who help us to come up with new homeware, gift and novelty items for our store, ensures we've always got something new and exciting for our customers.



Our e-commerce has become the home of Aardman online retail holding the most extensive range of Wallace & Gromit and Shaun the Sheep products in the UK and receiving more than 10,000 orders annually. All orders are fulfilled in-house by our cracking packing team.

This unique and successful enterprise is made possible by our hard-working team and dedicated and generous customers.



Thank you



FINANCIAL REVIEW & RESERVES

Wallace & Gromit's Grand Appeal is grateful to the thousands of donors, supporters, and retail customers who continue to support the Charity despite the restrictions of the coronavirus, and the cost-of-living crisis.



WITH THEIR SUPPORT, OUR INCOME IN THE FINANCIAL YEAR UNDER REVIEW HAS INCREASED FROM £2,545,097 TO £3,078,967, AN INCREASE OF 21%.

It is only with the support of our brilliant and incredible fundraisers that we can continue with our multi-million-pound investment portfolio for Bristol Children's Hospital and the Neonatal Intensive Care Unit. This revolving commitment to our Primary Purpose Activity spans a range of priorities:

- **Pioneering medical equipment and innovation**
- **Strategic building, ward and capital enhancements and child-friendly environments**
- **The provision of family accommodation and support for families, including social work**
- **A vibrant programme of arts, music, and play**
- **The furtherance of medical research specifically to benefit research into childhood illnesses**
- **Support for staff in Bristol Children's Hospital and NICU**

Within this portfolio commitment, some Primary Purpose activity falls under annual commitments, and some are one-off commitments.

Examples of multi-year commitments:

- **Family Accommodation:** Cots for Tots House, Grand Appeal House and Paul's House. We have a multi-year commitment to provide a continuum of accommodation for families of children treated in the children's hospital and the NICU.
- **Family Support Practitioners:** our two social workers form part of the parent support team at the children's hospital, helping parents/families throughout all wards and departments in the hospital and NICU, including those staying in our accommodation.
- **Arts, Music, and Play:** The Charity funds play staff – Oncology Play Assistant Sian and Sensory Play Practitioner Marius. The Charity also funds the two music therapists who provide music therapy five days a week, as well as a dedicated Arts Coordinator who oversees our Arts Unleashed programme.

These three examples of multi-year commitments are provided at cost by the Charity but deliver significant and enhanced Primary Purpose and Public Benefit value. These services are funded and delivered directly by the Charity.

Examples of one-off commitments:

- **Family Accommodation:** the complete refurbishment of Cots for Tots House after 10 years of operating and accommodating around 2,000 families; the house was extensively refurbished and modernised to provide new and upgraded facilities. More details are available elsewhere in this report.
- **Ocean Unit at Bristol Children's Hospital:** Ocean Unit, which treats children with cancer and blood conditions, was upgraded with support from Wallace & Gromit's Grand Appeal in the year under review. The unit looks after patients from Bristol and across the South West, with the Charity providing extensive support for the refurbishment of facilities as

well as longer-term support for patients, families and staff.

Longer-term strategic commitments:

In addition, the Charity Board takes a longer-term view of the support it delivers to the children's hospital and NICU.

- **Jingle Jam Building development at £2.2 million.** This funding is maintained in reserve until the administrative formalities are complete. More details of this project are available elsewhere in this annual report.

- **Staff Facilities development at £1 million.** Funding is held in reserve. Throughout the NHS nationally, staff vacancies are at record levels. In Bristol Children's Hospital and NICU, there are many vacancies for staff at all levels – consultant, doctor, nurse, and allied health professional. The charity has purchased a property – post-year end – which it intends to convert to short-term staff accommodation to facilitate staff recruitment to the children's hospital and NICU. With rental availability and cost in Bristol, a short-term accommodation solution will help those staff relocating to Bristol and help to mitigate the recruitment to paediatrics.

- **Capital Appeal.** The Board has agreed to support the redevelopment of part of the NICU to the value of £1 million to £1.5m through strategic and capital fundraising and the use of the free reserve.

In total, the Charity has commitments valued at circa £5.1 million in around 100 different projects. That which we have highlighted above forms but a snapshot of the work that the charity accomplishes for the public benefit in the children's hospital and NICU. More information on the range of projects funded is given elsewhere in this report.

Cash assets held by Wallace & Gromit's Grand Appeal:

The multi-million commitment to Bristol Children's Hospital and NICU derives from funds held in a mix of restricted, designated and free reserve funds.

- The Charity is fortunate to benefit from funds that are restricted as per donor wishes. These funds

stand at £2.76 million at the financial year-end.

- From time to time, the Charity Board designates funds from reserves to fund Primary Purpose projects. The value of these projects at the time of writing is £5.1 million. These funds represent a significant outlay over the medium term and include a multi-million-pound commitment for a Patient Hotel, an ongoing multi-million-pound commitment for the Cots for Tots Appeal, a large-scale new accommodation development, and a significant investment in paediatric medical research.

- Short term Primary Purpose commitments comprise approx. 70% of the portfolio by volume. This includes our staff working in the children's hospital and NICU in a range of roles – research, patient care and clinical – as well as providing a continuum of care in 28 beds in three family accommodation houses close to the hospital buildings. Additional Primary Purpose support is provided in the form of arts, music and play; ward/department refurbishment and staff, patient and family welfare.

To fulfil our strategic long-term commitment to the children's hospital and the NICU, the charity relies on the continued support of funders and donors. Our income generation strategies span three separate areas of the charity – philanthropy, fundraising and commercial. Each team is led by a member of the Senior Management Team responsible for strategies and income generation across the teams. Within each team, staff members are responsible for executing the strategies and our internal accountancy and finance team completes monthly internal Management Information and quarterly reports for the Board.

Fixed assets held by Wallace & Gromit's Grand Appeal:

These assets are not readily transferrable to cash.

- The Charity owns 30-32 Upper Maudlin Street, which acts as a dual-purpose HQ and family accommodation known as 'Paul's House', which provides eight en-suite rooms for families and is situated opposite Bristol Children's Hospital. The building is situated in a prime city centre site and is therefore nominally valued at £2m.

- The Charity owns a piece of land adjacent to

Cots for Tots House, which we will be developing in partnership with Bristol Children's Hospital as Jingle Jam Building (subject to the necessary planning consents) over the next few years. More details can be found elsewhere in this report.

- The Charity owns the contents of the family accommodation sites comprising 28 bedrooms, multiple laundries, kitchens and circulation spaces.

- Wallace & Gromit's Grand appeal has a wholly owned trading subsidiary 'Cracking Enterprises' which usually trades as 'The World of Gromit Unleashed'. All profits from this subsidiary are gifted to Wallace & Gromit's Grand Appeal annually. These accounts are presented as consolidated accounts of Wallace & Gromit's Grand Appeal and Cracking Enterprises, including the trading and commercial assets of the Gromit Unleashed brand in the Balance Sheet from which Wallace & Gromit's Grand Appeal continues to raise millions of pounds.

- The Charity also owns a variety of IT and HQ equipment to function as a Charity and as a going concern included in our Balance Sheet.

Reserves:

The Board takes its responsibility to donors and stakeholders very seriously, and at every quarterly Trustee Board meeting, Trustees review the extensive Management Information which informs the cash reserves held by Wallace & Gromit's Grand Appeal, ensuring a revolving portfolio of commitment for its Primary Purpose activity.

The Board acknowledges that to fulfil the short, medium, and long-term commitments of the Charity, it must balance the availability of funds, the one-off commitments, the long-term revenue commitments, strategic commitments and the future income generating strategy of the Charity. Within this, the Board believes that funds donated to the Charity should be used for the highest priorities. In setting the reserves. Trustees are cognisant of financial prudence, while maintaining the long-term financial stability of the charity. With significant future commitments in the medium term, the Trustees are keen to ensure that the charity's financial performance recognises and balances all factors which determine performance in line with its 'going concern' stability/

basis. Particularly during a period of national instability through the pandemic and the cost-of-living crisis.

In view of the increasing portfolio of activity, reserves are held by Wallace & Gromit's Grand Appeal to ensure that funding can be provided on an ongoing basis for both clinical and non-clinical activity and to ensure that reserves are sufficient to manage any shocks, volatility or periods of uncertainty in the UK economy such as the pandemic, inflation, energy costs and cost of living. As such, the Board reviews reserves from time to time in the context of the prevailing economic climate; commitments to Primary Purpose activity and the volume/scale of upcoming projects.

Large commitments can give rise to significant variations in expenditure from year to year and the Trustees acknowledge that a practical application of the Reserve Policy is required relevant to the particular circumstances of the Charity from year to year. Therefore, the funds set aside as a reserve will change in anticipation of scheduled projects in Bristol Children's Hospital and the NICU.

At the date of writing, the total commitments to Bristol Children's Hospital and NICU amount to approx. £5.1 million with total fixed assets at £2.6 million (which is not readily transferrable to cash) and a further £2.76 million in restricted funds. The unrestricted and undesignated cash reserves of the Charity that have not already been committed amount to £406,492. The Trustees will review their Policy to protect the Charity and its activities from market shocks.

WHAT'S NEXT FOR WALLACE & GROMIT'S GRAND APPEAL?

As the dedicated charity for Bristol Children's Hospital and the Neonatal Intensive Care Unit, the Wallace & Gromit's Grand Appeal Board fulfils short, medium, and long-term aspirations of both hospitals. Within each of our principal funding streams, the charity has ambitious plans to support the growth of the hospital, the NICU, and its services for patients and families.

Our principal ambitions are:

1 Family accommodation

We will add the finishing touches to our renovation of Cots for Tots House after 10 years of supporting families and accommodating over 2,000 families in that time. A new NICU parent group will meet at the house in the improved facilities, which furthers our Primary Purpose activity.

2 Emergency Department soft space and digital improvements

A new soft space for patients with additional needs and experiencing mental health issues is being created in the children's Emergency Department. This project was delayed from 2020 due to the increased pressures that coronavirus placed on the children's hospital. The project is scheduled to begin in the next Financial Year and will be funded by Wallace & Gromit's Grand Appeal. The department is planning significant digital enhancements to support patients and families in the waiting area to improve their experience. We will play a significant role in funding this development.

3 Cardiac 3D bio-printing

Our five-year relationship with the University of Bristol continues to flourish and we hope to extend our agreement into the long term. Wallace & Gromit's Grand Appeal will continue to support this ground-breaking project and its development under the expert guidance of Professor Massimo Caputo and Assistant Professor Dr Giovanni Biglino, who are international leaders in their field.

4 Jingle Jam Building

Our plans to create a new development in partnership with Bristol-based gaming company The Yogscast are gathering pace. Discussions with planners are at an advanced stage, with architects appointed. The development will have huge benefits for patients and their families from Bristol and the South West who will be able to stay together in a home-away-from-home facility just a short walk from the hospital. It will help to ease the pressure on inpatient beds in the children's hospital.

5 Cots for Tots

As the dedicated charity for the Neonatal Intensive Care Unit, we will continue to support the growth and development of the unit as the quaternary unit for babies requiring specialist care from Bristol and the South West region. Our support will encompass proposed developments in the NICU, as well as generous new facilities for parents and support for staff.

6 Accommodation for staff

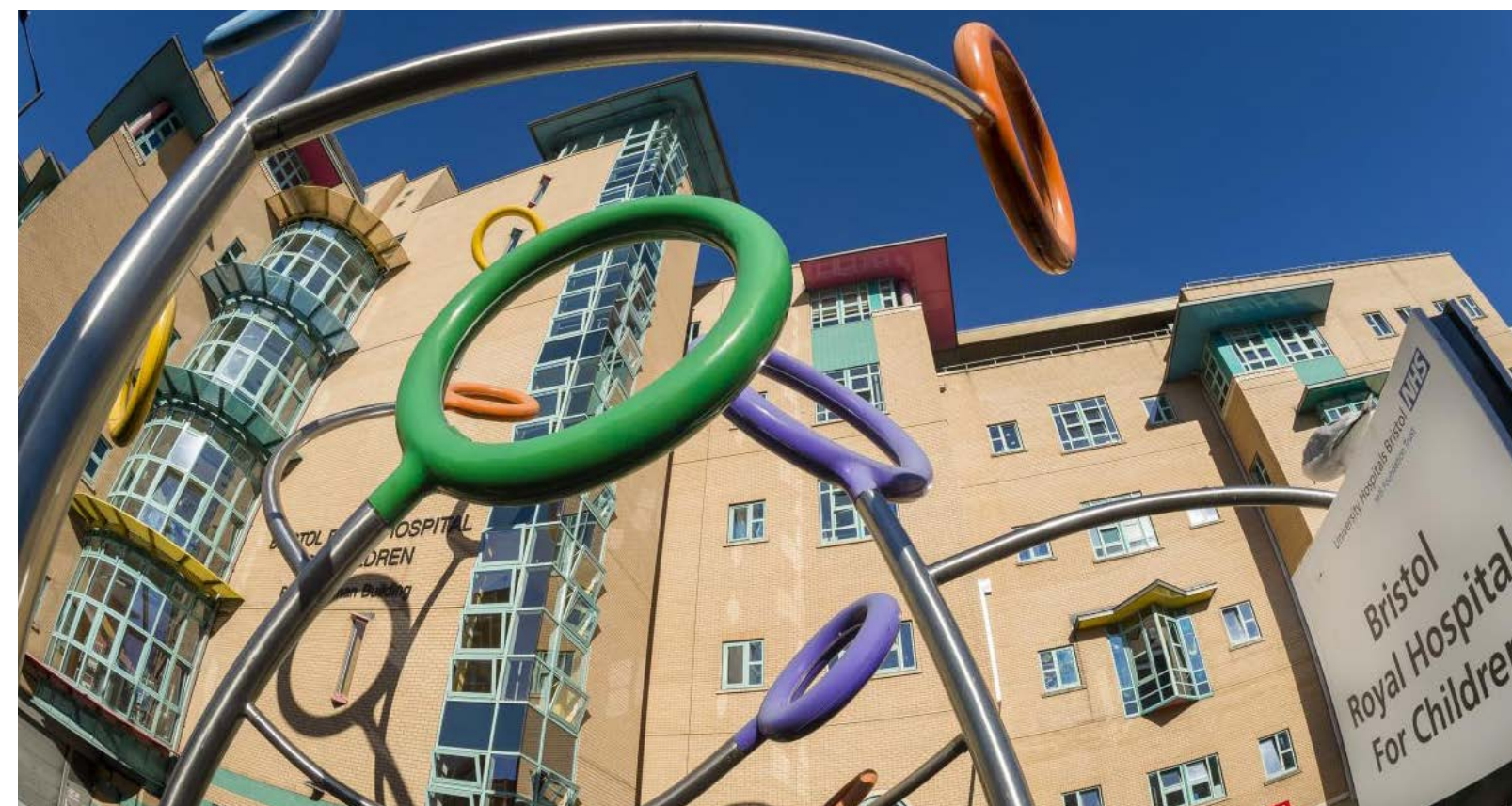
We have purchased property directly opposite Bristol Children's Hospital to further our strategic support for the hospital. The property will be converted to provide extra facilities for the hospital given that in its location there is little room for physical growth. The property will specifically support additional recruitment into the children's hospital and the NICU.

“Wallace & Gromit's Grand Appeal does a fantastic job of raising the children's spirits along with the parents and staff here at the Bristol Children's Hospital. As well as having a daily stall at the main entrance selling Wallace & Gromit items along with hand-knitted new items to raise money, they also have lots of helpful, useful information and advice for parents, helping them in their time of need to take away as much stress as possible.”

Michelle Bailey, Main Receptionist and Clerical Officer at Bristol Children's Hospital

“The Grand Appeal is a fundamentally important part of the Bristol Children's Hospital community. It has enabled the Trauma and Orthopaedic Department to continue to provide care of the highest quality to children throughout the South West and beyond.”

Fergal Monsell, Consultant Paediatric Orthopaedic Surgeon at Bristol Children's Hospital



LETTER FROM THE DIRECTOR



We are hugely grateful to all our donors and supporters for rising to the challenge of supporting us through the last two years as much as in the preceding 25 years. Thanks to this incredible support, we end the financial year in a good position, with a diversified portfolio of fundraising activity and an ambitious retail/commercial strategy.

Despite this, and alongside most charities, we know the difficulties that people will face in 2023 and beyond, with the price of energy soaring and inflation leading to a huge increase in the cost of living. We are therefore cautious about our expectations in the coming Financial Year but pragmatic enough to know that we have always not only risen to challenges in the past but can exceed expectations in the knowledge that we have tremendous support from the public, families and staff in the children's hospital and NICU.

I'd like to extend our thanks to our fantastic #TeamGrandAppeal staff and volunteers. Their support and loyalty through the pandemic were second to none. It is lovely to see our volunteers - especially neonatal nurse Emma, our money whizz Sue and 91-year-old superstar skydiver John - returning to their voluntary roles in the children's hospital and NICU. We've missed all our volunteers

hugely during the last two years of the pandemic, and we know we can achieve more when we work as one team to support sick children and their families.

The support we have from Aardman is phenomenal. From our Patrons through to the Executive Team and the hundreds of staff on the ground, we are simply blown away by their incredible show of strength for Wallace & Gromit's Grand Appeal, especially with their fundraising efforts and incredible challenges in summer 2022, which we will discuss in our next Annual Report.

Thanks go to the whole team and especially Nick Park and Angie Last, whose quiet and humble contributions show the strength of the 27-year partnership with Aardman.

Our work in Bristol Children's Hospital and the Neonatal Intensive Care Unit is only thanks to the unwavering support of our incredible donors and supporters. Our heartfelt thanks to each and every one on behalf of the whole Grand Appeal team. We are positive and excited to look forward to significant new developments in 2023 and beyond, thanks only to your continued support.

Thank you,

Nicola Masters
Director



STRUCTURE, GOVERNANCE, AND MANAGEMENT

The Charity is controlled by its governing document, a deed of trust, and constitutes a limited company, limited by guarantee, as defined by the Companies Act 2006.

Wallace & Gromit's Grand Appeal's Objects (formally registered as Wallace & Gromit's Children's Foundation charity no 1043603) are: The enhancement and improvement for the public benefit of the children's services provided by or at University Hospitals Bristol and Weston NHS Foundation Trust (by its current title) for the care and treatment of children with illnesses, diseases or disabilities. Full details of the Objects of the charity may be found as listed on the Charity Commission website or can be provided by direct contact with the charity on hello@grandappeal.org.uk.

1. REGULATORS

Wallace & Gromit's Grand Appeal takes its responsibility to the public and a range of regulators seriously and is occasionally subject to routine reviews. Each review over the years has elicited an excellent outcome.

2. TRUSTEES

As set out in the Articles of Association, Trustees are nominated and approved by the Board. Prospective Trustees are provided with full training and are cognisant of all factors affecting the strategic direction, risks, governance, and Primary Purpose responsibilities of the charity.

The Charity has a board of five Trustees – all wholly independent of the NHS and are appointed for their competence, profile, and specialist skills. The Trustees are volunteers who are unpaid and receive no expenses in this or any previous year. The Trustees are responsible for delivering sound governance, including safeguarding, and protecting the Charity's assets.

The Trustees have no personal or beneficial interest in Bristol Children's Hospital, the Neonatal Intensive Care Unit, University Hospitals Bristol and Weston NHS Foundation Trust, or any other NHS body.

3. OPERATIONAL MANAGEMENT

The Trustees delegate the day-to-day management of the charity to the Director, Nicola Masters. The Trustees meet approximately four times per year, often with regular communication between meetings without committee decisions being taken as appropriate.

The Senior Management Team (SMT) – comprising the Director, Deputy Director, Head of Philanthropy, Head of Fundraising (Corporate) and Head of Retail-Communications and Brand briefs the Trustees both formally and informally.

The team prepares briefings for the Trustees on relevant operational matters, including but not limited to Primary Purpose activity; governance; risk; safeguarding; income generation, and strategic relationships.

4. RELATED PARTIES

Simon Cooper, Jos Moule and Nicola Masters are directors of the wholly owned subsidiary Cracking Enterprises Ltd. Simon Cooper is a Trustee of the Charity Music Space. Jos Moule is a partner in Veale Wasborough Vizards. One of our Honorary Patrons, David Sproxton, is a director of Aardman Employee Owner Enterprise Trustee Limited, the corporate trustee for the entire Aardman Holdings Group, which includes Aardman Animations Ltd. He is also a director of Wallace & Gromit Ltd. Peter Lord is a director of Aardman Animations Ltd, Aardman Trustees Ltd, Aardman Holdings Ltd and Wallace & Gromit Ltd. Nick Park is a director of Aardman Holdings Ltd, Aardman Animations Ltd and Wallace & Gromit Ltd.

5. RISK MANAGEMENT

Since spring of 2020, coronavirus presented unprecedented challenges to the Charity up to and including the Financial Year under review. The Charity operates a Master Risk Register and subsidiary registers related to different parts of the operations of the charity. The Directorate, SMT, and Operational Team regularly review risks to the charity in the light of the specific risks resulting from the pandemic and across each part of the Charity. The principal risks are collated and presented in the Master Risk Register, with each risk graded in terms of severity and likelihood of giving an overall score. Further, the Charity operates a traffic light system with principal risks denoted in red, medium risks denoted in yellow and less severe risks in green. All the documents are regularly reviewed considering post-coronavirus governance and political and societal changes. The Trustees recognise the risks inherent in running a charity but also recognise that not all risk is negative. The Board, therefore, takes a proportionate view of managing risk but maximising our contribution to our Primary Purpose activity. Further, the Trustees recognise that there is no absolute guarantee or assurance but have confidence that risks are identified and controlled across the charity.

In the year under review, the principal risk related to maintaining accommodation for families for the general public given that this Charity was unique in maintaining family accommodation provision for Bristol Children's Hospital and NICU, which was unequalled amongst its peers.

Given that no other accommodation was available for families from Bristol and the South West, the Charity invested in additional resources at significant additional cost to ensure a safe environment for families and staff during the pandemic. The continuum of operation presented a 'red' risk to the charity during a period approaching two years. As the only Charity taking the risk to support families, the cost of increased infrastructure to allow the family accommodation to continue was the price to be paid. The increased cost is reflected in the Financial Statements in Section 5, "Other" expenditure.

6. INVESTMENT POLICY

With Board approval, the Charity has established a

Finance and Asset Committee comprising two Trustees and the Directorate to manage the property, cash and share assets of the Charity. The Committee will report to the Board, taking external advice where required. Currently, the Charity has cash assets invested in the London Money Markets. The charity owns property from which it operates its HQ and family accommodation, as well as land in Bristol for Jingle Jam Building, and land just over the boundary of the city of Bristol.

7. POST BALANCE SHEET EVENT

In November 2022, the Charity purchased a property close to its existing HQ to further its Primary Purpose activity in supporting the strategic direction of Bristol Children's Hospital and NICU. Further details of the use of this asset for public benefit are expressed in the main body of the report under the subheading 'What's Next for Wallace & Gromit's Grand Appeal?'

8. PUBLIC BENEFIT

The Trustees confirm that they have complied with their duty in the Charities Act 2011 to have due regard to public benefit guidance published by the Charity Commission. Further details of public benefits may be found within the main body of this report. The Charity strategically delivers support to the children's hospital and NICU under the following principles:

- **Pioneering medical equipment and innovation**
- **Strategic building, ward and capital enhancements and child-friendly environments**
- **The provision of family accommodation and support for families, including social work**
- **A vibrant programme of arts, music, and play**
- **The furtherance of medical research specifically to benefit research into childhood illnesses**
- **Support for staff in Bristol Children's Hospital and NICU**

In a review that began during the year under review, the University of Bristol conducted an independent research and evaluation project to

determine the 'Public Benefit' of the Charity's Family Accommodation and Family Support programme. The whole programme – identified as point c above – was valued at just shy of £500k p.a. alone. Further details of this report can be found in the main body of this report.

9. MEDICAL ADVISORY COMMITTEE

The Honorary Medical Advisory Committee acts in an advisory capacity to the Board. It and its members are not part of the formal accountability structure of the Charity, and they have no governance responsibilities. The members of the Medical Advisory Committee are unremunerated this year and in all previous years. No expenses are claimed. The members act on a purely voluntary basis. The membership is:

Dr Giles Haythornthwaite (Chair.) Consultant Paediatric Emergency Department and Clinical Lead for Major Trauma, Clinical Director of Paediatric Medicine at Bristol Children's Hospital

Mr Mike Carter. Consultant Paediatric Neurosurgeon, Bristol Children's Hospital.

Dr James Fraser. Consultant Paediatric Intensive Care, Bristol Children's Hospital.

Dr Anoo Jain. Consultant Neonatologist, Neonatal Intensive Care Unit, St Michael's Hospital, Bristol.

10. PATRONS BOARD

The Patrons Board informs the Board in matters relating to the extensive 27-year partnership with Aardman Animations, who generously allow the Charity to use the Wallace & Gromit characters to spearhead our fundraising. Membership is voluntary and the Patrons are unrewarded. Further details of the relationship with Aardman are provided throughout this Annual Report.

11. DIRECTORS INDEMNITY

Directors and Officers liability insurance was purchased to protect the integrity of the Charity during the year under review.

12. HR AND PEOPLE MANAGEMENT

The Trustees and the Directorate are grateful for the dedication, aspiration, and enthusiasm of our staff. The Charity is aware of the extra strain and well-being challenges that the Government's coronavirus restrictions and forced regulations placed on the workforce generally, and specifically at the Charity, we have adopted flexible working arrangements for the last two years. During the year under review and in consultation with staff, we have written and adopted a new and formal Hybrid Working Policy for many staff in HQ and those working on other sites. The new policy seems to be working well. Several HR /people management policies have been reviewed or replaced during the year under review or immediately post-year end. This is part of an ongoing review of policies at the Charity. The work to review and implement new HR and governance policies and procedures continues at pace. A new benefits package for staff was introduced during the period of the Government's restrictions. A new salary framework was introduced for staff across all sites immediately post-year end, with much of the work taking place in the year under review. We implemented a new Pay Framework post year end for staff which is a living document and is informed by market conditions and prevailing legislation. Directorate pay is governed directly by the Trustees. The Charity uses the professional, paid for, services of Xpert HR to benchmark salaries across the organisation.

We are fortunate to have a strong and loyal workforce. Around 50% of our staff have over five years' service with the Charity of which around 15% have over ten years' service. We are grateful to all staff – both longstanding and those who have recently joined – for their commitment and enthusiasm for the Charity. We are all one #TeamGrandAppeal.

13. SAFEGUARDING

Throughout the Charity – our Primary Purpose Activity, our Gromit Unleashed activity and our fundraising activity – our staff come into contact with members of the public every day across our five sites of operation. Safeguarding takes the highest priority in the Charity and our two designated Safeguarding leads – Anna Shepherd (Deputy Director) and Anne Clements (Family Accommodation Manager) are at the apex of the Charity's escalation process with

referrals to the Director where appropriate. We prioritise safeguarding across all three of our family accommodation sites, where the Charity works closely with the designated safeguarding team at University Hospitals Bristol and Weston NHS Foundation Trust. Simon Cooper is the designated safeguarding Trustee. All staff are DBS checked. Some staff working closely with families have enhanced DBS certification. Standard and/or enhanced safeguarding training is given to all staff, volunteers, and Trustees as appropriate.

The Charity acknowledges its safeguarding responsibility to the general public in ensuring that vulnerable children and adults are protected. This extends to premises, our fundraising practices and operations and services. Specifically for fundraising, this practice is risk adverse, and is closely coordinated with GDPR legislation. The Charity has received no complaints in the year under review.

14. PRIMARY PURPOSE FAMILY ACCOMMODATION BUILDING LEASES

The Charity leases Cots for Tots House and Grand Appeal House from University Hospitals Bristol and Weston NHS Foundation Trust under a 25-year agreement with no rent payable.

15. GOING CONCERN

The Trustees have reviewed the financial position of Wallace & Gromit's Grand Appeal, based on extensive Management Information, which is provided to the Board at Quarterly meetings. The Trustees consider the charity's cash flow, liquidity, and future funding commitments under Primary Purpose and balance this against the range of income generation capability of the Charity. Income from general fundraising, philanthropy and commercial income from our Gromit Unleashed retail operation forms part of this review. While for the two years since March 2020, including the year under review, our income and income generation strategies have suffered due to the pandemic and lockdowns imposed by the government, the Trustees are confident that the Charity has adequate resources to meet liability as they fall due in the foreseeable future.

16. VOLUNTEERS

The Charity is especially grateful to its volunteers – many of whom have supported the Charity over an extensive period. During the Covid, we missed their valuable contribution to our work due to Government restrictions, but it is wonderful to see them returning to the Appeal post year end now that restrictions are being lifted. We take great care to ensure that our wonderful volunteers are warmly welcomed at the charity and protected within our Volunteers Policy.

17. FUNDRAISING

The Charity takes its responsibility to the general public seriously and adheres to the Fundraising Regulator's Code of Conduct and is regulated by the Information Commissioner in its adherence to the provisions of the GDPR legislation. The Charity takes its safeguarding responsibilities very seriously and details of that Policy are given elsewhere in this Report.

Wallace & Gromit's Grand Appeal does not contract with any Professional Fundraisers.

Wallace & Gromit's Grand Appeal has received no complaints in the year under review.



STATEMENT OF THE TRUSTEES RESPONSIBILITIES

The Trustees (who are also the directors of Wallace & Gromit's Children's Foundation for the purposes of company law) are responsible for preparing the Report of the Trustees and the financial statements in accordance with applicable law and United Kingdom Accounting Standards (United Kingdom Generally Accepted Accounting Practice).

Company law requires the Trustees to prepare financial statements for each financial year which give a true and fair view of the state of affairs of the charitable company and of the incoming resources and application of resources, including the income and expenditure, of the charitable company for that period. In preparing those financial statements, the Trustees are required to

- **select suitable account policies and then apply them consistently;**
- **observe the methods and principal in the Charity SORP;**
- **make judgements and estimates that are reasonable and prudent;**
- **prepare the financial statements on the going concern basis unless it is inappropriate to presume that the charitable company will continue in business.**

The Trustees are responsible for keeping proper accounting records which disclose with reasonable accuracy at any time the financial position of the charitable company and to enable them to ensure that the financial statements comply with the Companies Act 2006. They are also responsible for safeguarding the assets of the charitable company and hence for taking reasonable steps for the prevention and detection of fraud and other irregularities.

In so far as the Trustees are aware:

- **there is no relevant audit information of which the charitable company's auditors are unaware;**
- and
- **the Trustees have taken all steps that they ought to have taken to make themselves aware of any relevant audit information and to establish that the auditors are aware of that information.**

AUDITORS

The auditors Moore will be proposed for re-appointment at the forthcoming Annual General Meeting.

This report has been prepared in accordance with the provisions of Part 15 of the Companies Act 2006 relating to small companies.

Approved by order of the board of Trustees on the 21 December 2022 and signed on its behalf by J H Moule.



REPORT OF THE INDEPENDENT AUDITORS TO THE MEMBERS OF WALLACE & GROMIT'S CHILDREN'S FOUNDATION

Opinion

We have audited the financial statements of Wallace & Gromit's Children's Foundation for the year ended 31 March 2022 which comprise the Consolidated Statement of Financial Activities, the Consolidated and Charitable Company's Balance Sheet, the Consolidated Cash Flow Statement and notes to the financial statements, including a summary of significant accounting policies. The financial reporting framework that has been applied in their preparation is applicable law and United Kingdom Accounting Standards (United Kingdom Generally Accepted Accounting Practice).

In our opinion the financial statements:

- give a true and fair view of the state of group's and of the parent charitable company's affairs as at 31 March 2022 and of its incoming resources and application of resources, including its income and expenditure, for the year then ended;
- have been properly prepared in accordance with United Kingdom Generally Accepted Accounting Practice; and
- have been prepared in accordance with the requirements of the Companies Act 2006 and the Charities Act 2011.

Basis for opinion

We conducted our audit in accordance with International Standards on Auditing (UK) (ISAs (UK) and applicable law. Our responsibilities under those standards are further described in the Auditors responsibilities for the audit of the financial statements section of our report. We are independent of the charitable company in accordance with the ethical requirements that are relevant to our audit of the financial statements in the UK, including the FRC's Ethical Standard, and the provisions available for small entities, in the circumstances set out in note 22 to the financial statements, and we have fulfilled our other ethical responsibilities in

accordance with these requirements. We believe that the audit evidence we have obtained is sufficient and appropriate to provide a basis for our opinion.

Conclusions relating to going concern

In auditing the financial statements, we have concluded that the trustees' use of the going concern basis of accounting in the preparation of the financial statements is appropriate.

Based on the work we have performed, we have not identified any material uncertainties relating to events or conditions that, individually or collectively, may cast significant doubt on the charitable company's ability to continue as a going concern for a period of at least twelve months from when the financial statements are authorised for issue.

Our responsibilities and the responsibilities of the trustees with respect to going concern are described in the relevant sections of this report.

Other information

The trustees are responsible for the other information. The other information comprises the information included in the annual report, other than the financial statements and our Report of the Independent Auditors thereon.

Our opinion on the financial statements does not cover the other information and, except to the extent otherwise explicitly stated in our report, we do not express any form of assurance conclusion thereon.

In connection with our audit of the financial statements, our responsibility is to read the other information and, in doing so, consider whether the other information is materially inconsistent with the financial statements or our knowledge obtained in the audit or otherwise appears to be materially

misstated. If we identify such material inconsistencies or apparent material misstatements, we are required to determine whether there is a material misstatement in the financial statements or a material misstatement of the other information. If, based on the work we have performed, we conclude that there is a material misstatement of this other information, we are required to report that fact. We have nothing to report in this regard.

Opinion on other matters prescribed by the Companies Act 2006

In our opinion, based on the work undertaken in the course of the audit:

- the information given in the Report of the Trustees for the financial year for which the financial statements are prepared is consistent with the financial statements; and
- the Report of the Trustees has been prepared in accordance with applicable legal requirements.

Matters on which we are required to report by exception

In the light of the knowledge and understanding of the charitable group and the parent charitable company and its environment obtained in the course of the audit, we have not identified material misstatements in the Report of the Trustees.

Matters on which we are required to report by exception

We have nothing to report in respect of the following matters where the Companies Act 2006 requires us to report to you if, in our opinion:

- adequate accounting records have not been kept or returns adequate for our audit have not been received from branches not visited by us; or
- the financial statements are not in agreement with the accounting records and returns; or
- certain disclosures of trustees' remuneration specified by law are not made; or
- we have not received all the information and explanations we require for our audit; or
- the trustees were not entitled to take advantage of the small companies exemption from the requirement to prepare a Strategic Report or in preparing the Report of the Trustees.

Responsibilities of trustees

As explained more fully in the Statement of Trustees Responsibilities, the trustees (who are also the directors of the charitable company for the purposes of company law) are responsible for the preparation of the financial statements and for being satisfied that they give a true and fair view, and for such internal control as the trustees determine is necessary to enable the preparation of financial statements that are free from material misstatement, whether due to fraud or error.

In preparing the financial statements, the trustees are responsible for assessing the charitable company's ability to continue as a going concern, disclosing, as applicable, matters related to going concern and using the going concern basis of accounting unless the trustees either intend to liquidate the charitable company or to cease operations, or have no realistic alternative but to do so.

Our responsibilities for the audit of the financial statements

Our objectives are to obtain reasonable assurance about whether the financial statements as a whole are free from material misstatement, whether due to fraud or error, and to issue a Report of the Independent Auditors that includes our opinion. Reasonable assurance is a high level of assurance, but is not a guarantee that an audit conducted in accordance with ISAs (UK) will always detect a material misstatement when it exists. Misstatements can arise from fraud or error and are considered material if, individually or in the aggregate, they could reasonably be expected to influence the economic decisions of users taken on the basis of these financial statements.

Irregularities, including fraud, are instances of non-compliance with laws and regulations. We design procedures in line with our responsibilities, outlined above, to detect material misstatements in respect of irregularities, including fraud. The extent to which our procedures are capable of detecting irregularities, including fraud is detailed below:

Explanation as to what extent the audit was considered capable of detecting irregularities, including fraud

The objectives of our audit in respect of fraud, are; to identify and assess the risks of material misstatement of the financial statements due to fraud; to obtain sufficient appropriate audit evidence regarding the assessed risks of material misstatement due to fraud, through designing and implementing appropriate responses to those assessed risks; and to respond appropriately to instances of fraud or suspected fraud identified during the audit. However, the primary responsibility for the prevention and detection of fraud rests with both management and those charged with governance of the charitable company.

Our approach was as follows:

We obtained an understanding of the legal and regulatory requirements applicable to the charitable company and considered that the most significant are the Companies Act 2006, UK financial reporting standards as issued by the Financial Reporting Council, the Charities Act 2011 and the Charities SORP.

We obtained an understanding of how the company complies with these requirements by discussions with management and those charged with governance.

We assessed the risk of material misstatement of the financial statements, including the risk of material misstatement due to fraud and how it might occur, by holding discussions with management and those charged with governance.

We inquired of management and those charged with governance as to any known instances of non-compliance or suspected non-compliance with laws and regulations.

Based on this understanding, we designed specific appropriate audit procedures to identify instances of non-compliance with laws and regulations. This included making enquiries of management and those charged with governance and obtaining additional corroborative evidence as required.

A further description of our responsibilities for the audit of the financial statements is located on the Financial Reporting Council's website at frc.org.uk/auditorsresponsibilities. This description forms part of our Report of the Independent Auditors

Use of our report

This report is made solely to the charitable company's members, as a body, in accordance with Chapter 3 of Part 16 of the Companies Act 2006. Our audit work has been undertaken so that we might state to the charitable company's members those matters we are required to state to them in an auditors' report and for no other purpose. To the fullest extent permitted by law, we do not accept or assume responsibility to anyone other than the charitable company and the charitable company's members as a body, for our audit work, for this report, or for the opinions we have formed.

Mark Powell (Senior Statutory Auditor) for and on behalf of Moore, Chartered Accountants and Statutory Auditors
First Floor
St Augustine's Parade
Bristol
BS1 4UL

Date: 21 December 2022



CONSOLIDATED STATEMENT OF FINANCIAL ACTIVITIES for the year ended 31 March 2022

Wallace & Gromit's Children's Foundation

CONSOLIDATED STATEMENT OF FINANCIAL ACTIVITIES for the year ended 31 March 2022

		Unrestricted funds	Restricted funds	2022 Total funds	2021 Total funds
	Notes	£	£	£	£
INCOME AND ENDOWMENTS FROM					
Donations and legacies	2	1,216,726	992,260	2,208,986	1,837,058
Other trading activity	2	862,417	-	862,417	642,216
Investment income	3	562	-	562	2,698
Government grants		<u>7,002</u>	<u>-</u>	<u>7,002</u>	<u>63,125</u>
Total		2,086,707	992,260	3,078,967	2,545,097
EXPENDITURE ON					
Raising funds	6				
Cost of fundraising		379,597	-	379,597	371,111
Cost of trading		813,296	-	813,296	604,196
Charitable activities	7				
Support for Bristol Children's Hospital		515,806	200,038	715,844	820,466
Support for Special Care Baby Unit/ Cots for Tots		-	248,946	248,946	236,461
Wallace & Gromit's Children's Charity		-	-	-	9,375
Other		<u>232,748</u>	<u>-</u>	<u>232,748</u>	<u>387,058</u>
Total		1,941,447	448,984	2,390,431	2,428,667
NET INCOME		145,260	543,276	688,536	116,430
Net movement in funds		145,260	543,276	688,536	116,430
RECONCILIATION OF FUNDS					
Total funds brought forward		6,970,021	2,216,521	9,186,542	9,070,112
TOTAL FUNDS CARRIED FORWARD		<u>7,115,281</u>	<u>2,759,797</u>	<u>9,875,078</u>	<u>9,186,542</u>

CONTINUING OPERATIONS

All income and expenditure has arisen from continuing activities.

BALANCE SHEETS
At 31 March 2022

		2022 Group	2022 Charity	2021 Group	2021 Charity
	Notes	£	£	£	£
FIXED ASSETS					
Intangible assets	14	34,177	34,177	25,200	25,200
Tangible assets	15	2,558,256	2,558,256	2,436,583	2,436,583
Investments		<u>-</u>	<u>1</u>	<u>-</u>	<u>1</u>
		2,592,433	2,592,434	2,461,783	2,461,784
CURRENT ASSETS					
Stocks		222,483	-	125,155	-
Debtors	16	420,705	709,315	91,753	376,187
Cash at bank		<u>6,805,386</u>	<u>6,591,786</u>	<u>6,717,014</u>	<u>6,397,368</u>
		7,448,574	7,301,101	6,933,922	6,773,555
CREDITORS					
Amounts falling due within one year	17	<u>(165,929)</u>	<u>(74,580)</u>	<u>(209,163)</u>	<u>(118,114)</u>
NET CURRENT ASSETS		<u>7,282,645</u>	<u>7,226,521</u>	<u>6,724,759</u>	<u>6,655,441</u>
TOTAL ASSETS LESS CURRENT LIABILITIES		<u>9,875,078</u>	<u>9,818,955</u>	<u>9,186,542</u>	<u>9,117,225</u>
NET ASSETS		<u>9,875,078</u>	<u>9,818,955</u>	<u>9,186,542</u>	<u>9,117,225</u>
FUNDS	19				
Unrestricted designated		2,180,954	2,180,954	3,021,264	3,021,264
Unrestricted funds		4,934,327	4,878,204	3,948,757	3,879,440
Restricted funds		<u>2,759,797</u>	<u>2,759,797</u>	<u>2,216,521</u>	<u>2,216,521</u>
TOTAL FUNDS		<u>9,875,078</u>	<u>9,818,955</u>	<u>9,186,542</u>	<u>9,117,225</u>

These financial statements have been prepared in accordance with the special provisions of Part 15 of the Companies Act 2006 relating to small charitable companies.

The financial statements were approved by the Board of Trustees on 21 December 2022 and were signed on its behalf by:



J H Moule - Trustee

The notes form part of these financial statements

CONSOLIDATED CASH FLOW STATEMENT
for the year ended 31 March 2022

	Notes	2022 £	2021 £
Cash flows from operating activities:			
Cash generated from operations	1	<u>317,555</u>	<u>201,117</u>
Net cash provided by (used in) operating activities		<u>317,555</u>	<u>201,117</u>
Cash flows from investing activities:			
Purchase of intangible fixed assets		(20,370)	(25,200)
Purchase of tangible fixed assets		<u>(208,813)</u>	<u>(28,990)</u>
Net cash provided by (used in) investing activities		<u>(229,183)</u>	<u>(54,190)</u>
Change in cash and cash equivalents in the reporting period		88,372	146,927
Cash and cash equivalents at the beginning of the reporting period		<u>6,717,014</u>	<u>6,570,087</u>
Cash and cash equivalents at the end of the reporting period		<u>6,805,386</u>	<u>6,717,014</u>

The notes form part of these financial statements

NOTES TO THE CONSOLIDATED CASH FLOW STATEMENT
for the year ended 31 March 2022

1.	RECONCILIATION OF NET INCOME TO NET CASH FLOW FROM OPERATING ACTIVITIES		
	2022	2021	
	£	£	
Net income for the reporting period (as per the statement of financial activities)	688,536	116,430	
Adjustments for:			
Depreciation charges	98,533	85,741	
Decrease/(increase) in stock	(97,328)	(11,713)	
Decrease/(increase) in debtors	(328,952)	(56,156)	
Increase/(decrease) in creditors	(43,234)	66,815	
Net cash provided by (used in) operating activities	317,555	201,117	

2. ANALYSIS OF CHANGES IN NET FUNDS

	At 1.4.21	Cash flow	At 31.3.22
	£	£	£
Net cash			
Cash at bank and in hand	6,717,014	88,372	6,805,386
	6,717,014	88,372	6,805,386
Total	6,717,014	88,372	6,805,386

NOTES TO THE FINANCIAL STATEMENTS
for the year ended 31 March 2022

STATUTORY INFORMATION

Wallace & Gromit’s Children’s Foundation is a private company, limited by guarantee, registered in England and Wales. The company’s registered number and registered office address can be found on the Company Information page.

1. ACCOUNTING POLICIES

Basis of preparing the financial statements

The financial statements of the charitable company, which is a public benefit entity under FRS 102, have been prepared in accordance with the Charities SORP (FRS 102) 'Accounting and Reporting by Charities: Statement of Recommended Practice applicable to charities preparing their accounts in accordance with the Financial Reporting Standard applicable in the UK and Republic of Ireland (FRS 102) (effective 1 January 2019)', Financial Reporting Standard 102 'The Financial Reporting Standard applicable in the UK and Republic of Ireland' and the Companies Act 2006. The financial statements have been prepared under the historical cost convention.

The consolidated accounts include the trading activities, assets and liabilities of the subsidiary company and are prepared in sterling which is the functional currency of the entity.

Going Concern

At the balance sheet date, the charity had net current assets of £7,226k and net assets of £9,818k. The charity continues to meet all its liabilities as they fall due.

The trustees have further considered the level of funds held and the expected level of income and expenditure for 12 months from authorising these financial statements in light of the COVID-19 pandemic and specifically those regions affecting their operations. The trustees believe budgeted income and expenditure and the level of reserves held are sufficient for the charity to be able to continue as a going concern.

Income

All income is recognised in the Statement of Financial Activities once the charity has entitlement to the funds, it is probable that the income will be received and the amount can be measured reliably.

Grants receivable

Income from government and other grants, whether 'capital' or 'revenue', is recognised when the charity has entitlement to the funds, any performance conditions attached to the grants have been met, it is probable that the income will be received and the amount can be measured reliably and is not deferred.

Expenditure

Liabilities are recognised as expenditure as soon as there is a legal or constructive obligation committing the charity to that expenditure, it is probable that a transfer of economic benefits will be required in settlement and the amount of the obligation can be measured reliably. Expenditure is accounted for on an accruals basis and has been classified under headings that aggregate all cost related to the category. Where costs cannot be directly attributed to particular headings they have been allocated to activities on a basis consistent with the use of resources.

Grants offered subject to conditions which have not been met at the year end date are noted as a commitment but not accrued as expenditure.

Allocation and apportionment of costs

Staff costs are apportioned based on the proportion of time spent on the relevant activities. Other costs are directly allocated to the activities that they relate to.

Intangible fixed assets

Website development costs are capitalised at cost and are amortised over the website's estimated useful life of 3 years.

Tangible fixed assets

Depreciation is provided at the following rates in order to write off each asset over its estimated useful life.

Freehold property	- Straight line over 50 years
Leasehold improvements	- Straight line over the period of the lease
Office equipment	- Straight line over 4 years
Fixture & Fittings	- Straight line over 5 years

NOTES TO THE FINANCIAL STATEMENTS - CONTINUED
for the year ended 31 March 2022

1. ACCOUNTING POLICIES - continued

Stocks

Stocks are valued at the lower of cost and net realisable value after making due allowance for obsolete and slow moving items.

Taxation

The charity is exempt from corporation tax on its charitable activities.

Fund accounting

Unrestricted funds can be used in accordance with the charitable objectives at the discretion of the trustees. Restricted funds can only be used for particular restricted purposes within the objects of the charity. Restrictions arise when specified by the donor or when funds are raised for particular restricted purposes. Further explanation of the nature and purpose of each fund is included in the trustees' report.

Pension costs and other post-retirement benefits

The charitable company operates a defined contribution pension scheme. Contributions payable to the charitable company's pension scheme are charged to the Statement of Financial Activities in the period to which they relate. The contributions are apportioned to relevant activities based upon the proportion of time spent on that activity by the employee to which they relate.

Financial instruments

Financial instruments are classified and accounted for, according to the substance of the contractual arrangement, as either financial assets, financial liabilities or equity instruments. An equity instrument is any contract that evidences a residual interest in the assets of the company after deducting all of its liabilities.

2. DONATIONS AND LEGACIES AND MERCHANDISING INCOME

	2022	2021
	£	£
Donations Grand Appeal	1,894,508	1,469,056
Legacies	300,642	355,693
Donated services and gifts	13,836	12,309
Other trading activity	862,417	642,216
	<u>3,071,403</u>	<u>2,479,274</u>

3. INVESTMENT INCOME

	2022	2021
	£	£
Bank deposit interest	<u>562</u>	<u>2,698</u>

4. INCOME AND RESULTS OF THE CHARITY

	2022	2021
	£	£
Donations	2,208,986	1,837,058
Interest receivable	562	2,698
Other income	69,317	126,254
	<u>2,278,865</u>	<u>1,966,010</u>
Incoming resources		
Raising funds	379,597	371,111
Charitable activities	964,790	1,066,302
Governance costs	232,748	387,058
	<u>1,577,135</u>	<u>1,824,471</u>
Resources expended		
Net income/ (expenditure) for the year	<u>701,730</u>	<u>141,539</u>

NOTES TO THE FINANCIAL STATEMENTS - CONTINUED
for the year ended 31 March 2022

5. MERCHANDISING SALES AND INVESTMENT IN TRADING SUBSIDIARY

The wholly-owned trading subsidiary, Cracking Enterprises Limited, which is incorporated in the United Kingdom, pays all its profits to the charity by gift aid. The charity owns the entire issued share capital of 1,000 shares of £1 each. A summary of the trading results is shown below.

Summary profit and loss account:

	2022	2021
	£	£
Turnover	869,419	673,513
Cost of sales and administrative expenses	(813,296)	(604,196)
	<u>56,123</u>	<u>69,317</u>
Net profit		
	<u>56,123</u>	<u>69,317</u>
The assets and liabilities of the subsidiary were :		
Fixed assets	-	-
Current assets	437,458	450,352
Creditors	(380,335)	(380,035)
	<u>57,123</u>	<u>70,317</u>
Total net assets		
	<u>57,123</u>	<u>70,317</u>
Share capital	1,000	1,000
Retained earnings	56,123	69,317
	<u>57,123</u>	<u>70,317</u>

6. RAISING FUNDS

Raising donations and legacies

	2022	2021
	£	£
Staff costs	264,314	287,408
Non-staff costs	115,283	83,703
Expenditure associated with trading	<u>813,296</u>	<u>604,196</u>
	<u>1,192,893</u>	<u>975,307</u>

NOTES TO THE FINANCIAL STATEMENTS - CONTINUED
for the year ended 31 March 2022

7. CHARITABLE ACTIVITIES COSTS

	Direct costs	Grant funding of activities (See note 8)	Support costs (see note 9)	Total
	£	£	£	£
Support for Bristol Children's Hospital	415,572	213,133	87,139	715,844
Support for Special Care Baby Unit/Cots for Tots	218,927	30,019	-	248,946
Wallace & Gromit's Children's Charity	-	-	-	-
	<u>634,499</u>	<u>243,152</u>	<u>87,139</u>	<u>964,790</u>

Prior year comparatives

	Direct costs	Grant funding of activities (see note 8)	Total
	£	£	£
Support for Bristol Children's Hospital	575,897	244,569	820,466
Support for Special Care Baby Unit/Cots for Tots	43,740	192,721	236,461
Wallace & Gromit's Children's Charity	<u>305</u>	<u>9,070</u>	<u>9,375</u>
	<u>619,942</u>	<u>446,360</u>	<u>1,066,302</u>

8. GRANTS PAYABLE

	2022 £	2021 £
Support for Bristol Children's Hospital	213,133	244,569
Support for Special Care Baby Unit/ Cots for Tots	30,019	192,721
Wallace & Gromit's Children's Charity	<u>-</u>	<u>9,070</u>
	<u>243,152</u>	<u>446,360</u>

The total grants paid to institutions during the year was as follows:

	2022 £	2021 £
The Royal Hospital for Children, Bristol	243,152	437,290
Wallace & Gromit's Children's Charity	<u>-</u>	<u>9,070</u>
	<u>243,152</u>	<u>446,360</u>

NOTES TO THE FINANCIAL STATEMENTS - CONTINUED
for the year ended 31 March 2022

9. SUPPORT COSTS

	Governance costs 2022 £	2021 £
Staff costs	162,385	169,517
Non staff costs	70,363	131,800
Support for Bristol Children's Hospital	<u>87,139</u>	<u>85,741</u>
	<u>319,887</u>	<u>387,058</u>

10. NET INCOME/(EXPENDITURE)

Net income/(expenditure) is stated after charging/(crediting):

	2022 £	2021 £
Auditors' remuneration	22,186	23,006
Depreciation - owned assets	87,140	85,741
Computer software amortisation	<u>11,393</u>	<u>-</u>

11. TRUSTEES' REMUNERATION AND BENEFITS

There were no trustees' remuneration or other benefits for the year ended 31 March 2022 nor for the year ended 31 March 2021.

Trustees' expenses

There were no trustees' expenses paid for the year ended 31 March 2022 nor for the year ended 31 March 2021.

12. STAFF COSTS

	2022 £	2021 £
Wages and salaries	801,395	852,363
Social security costs	60,816	48,962
Other pension costs	<u>93,836</u>	<u>89,986</u>
	<u>956,047</u>	<u>991,311</u>

The average monthly number of employees during the year was as follows:

	2022	2021
All staff - full time & part time	<u>34</u>	<u>35</u>

The number of employees whose employee benefits (excluding pension costs) exceeded £60,000 was:

	2022	2021
£60,001-£70,000	<u>-</u>	<u>-</u>

Key management personnel: the total amount of employee benefits received by key management personnel is £167,096 (2021:£151,722).

The Charity remains grateful for the work of its volunteers. The role and scope of work undertaken varies and the time donated by volunteers is not recognised in the financial statements as this cannot be reliably or consistently valued.

NOTES TO THE FINANCIAL STATEMENTS - CONTINUED
for the year ended 31 March 2022

13. COMPARATIVES FOR THE STATEMENT OF FINANCIAL ACTIVITIES

	Unrestricted funds £	Restricted funds £	Total funds £
INCOME AND ENDOWMENTS FROM			
Donations and legacies	1,141,345	695,713	1,837,058
Other trading activities	642,216	-	642,216
Investment income	2,698	-	2,698
Government grants	<u>63,125</u>	<u>-</u>	<u>63,125</u>
Total	<u>1,849,384</u>	<u>695,713</u>	<u>2,545,097</u>
EXPENDITURE ON			
Raising funds			
Cost of fundraising	371,111	-	371,111
Cost of trading	604,196	-	604,196
Charitable activities			
Support for Bristol Children's Hospital	510,787	309,679	820,466
Support for Special Care Baby Unit/ Cots for Tots	2,410	234,051	236,461
Wallace & Gromit's Children's Charity	305	9,070	9,375
Other	<u>387,058</u>	<u>-</u>	<u>387,058</u>
Total	<u>1,875,867</u>	<u>552,800</u>	<u>2,428,667</u>
NET INCOME	<u>(26,483)</u>	<u>142,913</u>	<u>116,430</u>
Net movement in funds	(26,483)	142,913	116,430
RECONCILIATION OF FUNDS			
Total funds brought forward	<u>6,996,504</u>	<u>2,073,608</u>	<u>9,070,112</u>
TOTAL FUNDS CARRIED FORWARD	<u><u>6,970,021</u></u>	<u><u>2,216,521</u></u>	<u><u>9,186,542</u></u>

14. INTANGIBLE FIXED ASSETS (Group and charity)

	Computer software £
COST	
At 1 April 2021	25,200
Additions	<u>20,370</u>
At 31 March 2022	<u>45,570</u>
AMORTISATION	
Charge for year	<u>11,393</u>
NET BOOK VALUE	
At 31 March 2022	<u><u>34,177</u></u>
At 31 March 2021	<u><u>25,200</u></u>

NOTES TO THE FINANCIAL STATEMENTS - CONTINUED
for the year ended 31 March 2022

15. TANGIBLE FIXED ASSETS

<i>Group</i>	Freehold property £	Leasehold improvements £	Fixtures & Fittings £	Office equipment £	Totals £
COST					
At 1 April 2021	2,053,410	499,907	96,751	34,514	2,684,582
Additions	37,975	169,771	1,067	-	208,813
Disposal	<u>-</u>	<u>-</u>	<u>-</u>	<u>(424)</u>	<u>(424)</u>
At 31 March 2022	<u>2,091,385</u>	<u>669,678</u>	<u>97,818</u>	<u>34,090</u>	<u>2,892,971</u>
DEPRECIATION					
At 1 April 2021	123,204	39,218	63,634	21,943	247,999
Charge for year	41,069	21,066	19,454	5,551	87,140
Eliminated on disposal	<u>-</u>	<u>-</u>	<u>-</u>	<u>(424)</u>	<u>(424)</u>
At 31 March 2022	<u>164,273</u>	<u>60,284</u>	<u>83,088</u>	<u>27,070</u>	<u>334,715</u>
NET BOOK VALUE					
At 31 March 2022	<u><u>1,927,112</u></u>	<u><u>609,394</u></u>	<u><u>14,730</u></u>	<u><u>7,020</u></u>	<u><u>2,558,256</u></u>
At 31 March 2021	<u><u>1,930,206</u></u>	<u><u>460,689</u></u>	<u><u>33,117</u></u>	<u><u>12,571</u></u>	<u><u>2,436,583</u></u>
<i>Parent company</i>					
COST					
At 1 April 2021	2,053,410	499,907	96,751	34,090	2,684,158
Additions	<u>37,975</u>	<u>169,771</u>	<u>1,067</u>	<u>-</u>	<u>208,813</u>
At 31 March 2022	<u>2,091,385</u>	<u>669,678</u>	<u>97,818</u>	<u>34,090</u>	<u>2,892,971</u>
DEPRECIATION					
At 1 April 2021	123,204	39,218	63,634	21,519	247,575
Charge for year	<u>41,069</u>	<u>21,066</u>	<u>19,454</u>	<u>5,551</u>	<u>87,140</u>
At 31 March 2022	<u>164,273</u>	<u>60,284</u>	<u>83,088</u>	<u>27,070</u>	<u>334,715</u>
NET BOOK VALUE					
At 31 March 2022	<u><u>1,927,112</u></u>	<u><u>609,394</u></u>	<u><u>14,730</u></u>	<u><u>7,020</u></u>	<u><u>2,558,256</u></u>
At 31 March 2021	<u><u>1,930,206</u></u>	<u><u>460,689</u></u>	<u><u>33,117</u></u>	<u><u>12,571</u></u>	<u><u>2,436,583</u></u>

NOTES TO THE FINANCIAL STATEMENTS - CONTINUED
for the year ended 31 March 2022

16. DEBTORS

	Charity		Group	
	2022	2021	2022	2021
	£	£	£	£
Amounts falling due within one year:				
Trade debtors	31,500	-	31,875	-
Amounts due from group undertakings	289,985	289,985	-	-
Other debtors	321,849	22,498	321,849	28,049
Prepayments & accrued income	66,981	63,704	66,981	63,704
	<u>709,315</u>	<u>376,187</u>	<u>420,705</u>	<u>91,753</u>

17. CREDITORS: AMOUNTS FALLING DUE WITHIN ONE YEAR

	Charity		Group	
	2022	2021	2022	2021
	£	£	£	£
Trade creditors	41,994	88,880	80,629	119,209
Other creditors	32,586	29,234	55,457	42,385
Accrued expenses	-	-	29,843	47,569
	<u>74,580</u>	<u>118,114</u>	<u>165,929</u>	<u>209,163</u>

18. LEASING AGREEMENTS

Minimum lease payments under non-cancellable operating leases fall due as follows:

	2022	2021
	£	£
Within one year	15,471	16,978
Between one and five years	<u>14,803</u>	<u>30,275</u>
	<u>30,274</u>	<u>47,253</u>

NOTES TO THE FINANCIAL STATEMENTS - CONTINUED
for the year ended 31 March 2022

19. MOVEMENT IN FUNDS

	At 1.4.21 £	Net movement in funds £	Transfers between funds £	At 31.3.22 £
Unrestricted funds – Group current year				
The Grand Appeal	3,948,757	145,260	840,310	4,934,327
Designated	<u>3,021,264</u>	<u>-</u>	<u>(840,310)</u>	<u>2,180,954</u>
	<u>6,970,021</u>	<u>145,260</u>	<u>-</u>	<u>7,115,281</u>
Unrestricted funds – Charity current year				
The Grand Appeal	3,879,440	158,454	840,310	4,878,204
Designated	<u>3,021,264</u>	<u>-</u>	<u>(840,310)</u>	<u>2,180,954</u>
	<u>6,900,704</u>	<u>158,454</u>	<u>-</u>	<u>7,059,158</u>
Restricted funds – Group and Charity				
Bristol Children's Hospital	693,942	319,729	-	1,013,671
Patient Hotel	1,124,058	234,950	-	1,359,008
Cots for Tots - NICU	303,840	(20,555)	-	283,285
Wallace & Gromit's Children's Charity	<u>94,681</u>	<u>9,152</u>	<u>-</u>	<u>103,833</u>
	<u>2,216,521</u>	<u>543,276</u>	<u>-</u>	<u>2,759,797</u>
Total funds – Current year				
Group	<u>9,186,542</u>	<u>688,536</u>	<u>-</u>	<u>9,875,078</u>
Charity	<u>9,117,225</u>	<u>701,730</u>	<u>-</u>	<u>9,818,955</u>
Net movement in funds, included in the above are as follows:				
	Incoming resources £	Resources expended £	Movement in funds £	
Unrestricted funds - Group				
The Grand Appeal	<u>2,086,707</u>	<u>(1,941,447)</u>	<u>145,260</u>	
Unrestricted funds - Charity				
The Grand Appeal	<u>1,286,605</u>	<u>(1,128,151)</u>	<u>158,454</u>	
Restricted funds – Group and Charity				
Bristol Children's Hospital	494,830	(175,101)	319,729	
Patient Hotel	259,887	(24,937)	234,950	
Cots for Tots - NICU	228,391	(248,946)	(20,555)	
Wallace & Gromit's Children's Charity	<u>9,152</u>	<u>-</u>	<u>9,152</u>	
	<u>992,260</u>	<u>(448,984)</u>	<u>543,276</u>	
Total funds				
Group	<u>3,078,967</u>	<u>(2,390,431)</u>	<u>688,536</u>	
Charity	<u>2,278,865</u>	<u>(1,577,135)</u>	<u>701,730</u>	

NOTES TO THE FINANCIAL STATEMENTS - CONTINUED
for the year ended 31 March 2022

19. MOVEMENT IN FUNDS - continued

Comparatives for movement in funds

	At 1.4.20 £	Net movement in funds £	Transfers between funds £	At 31.3.21 £
Unrestricted funds - Group				
The Grand Appeal	2,752,381	(26,483)	1,222,859	3,948,757
Designated	<u>4,244,123</u>	<u>-</u>	<u>(1,222,859)</u>	<u>3,021,264</u>
	<u>6,996,504</u>	<u>(26,483)</u>	<u>-</u>	<u>6,970,021</u>
Unrestricted funds - Charity				
The Grand Appeal	2,657,955	(1,374)	1,222,859	3,879,440
Designated	<u>4,244,123</u>	<u>-</u>	<u>(1,222,859)</u>	<u>3,021,264</u>
	<u>6,902,078</u>	<u>(1,374)</u>	<u>-</u>	<u>6,900,704</u>
Restricted funds – Group and Charity				
Bristol Children’s Hospital	724,762	(30,820)	-	693,942
Patient Hotel	873,186	250,872	-	1,124,058
Cots for Tots - NICU	378,086	(74,246)	-	303,840
Wallace & Gromit’s Children’s Charity	<u>97,574</u>	<u>(2,893)</u>	<u>-</u>	<u>94,681</u>
	<u>2,073,608</u>	<u>142,913</u>	<u>-</u>	<u>2,216,521</u>
Total funds Group	<u>9,070,112</u>	<u>116,430</u>	<u>-</u>	<u>9,186,542</u>
Charity	<u>8,975,686</u>	<u>141,539</u>	<u>-</u>	<u>9,117,225</u>
Net movement in funds, included in the above are as follows:				
		Incoming resources £	Resources expended £	Movement in funds £
Unrestricted funds - Group				
The Grand Appeal		<u>1,849,384</u>	<u>(1,875,867)</u>	<u>(26,483)</u>
Unrestricted funds - Charity				
The Grand Appeal		<u>1,270,297</u>	<u>(1,271,671)</u>	<u>(1,374)</u>
Restricted funds – Group and Charity				
Bristol Children’s Hospital		245,484	(276,304)	(30,820)
Patient Hotel		284,247	(33,375)	250,872
Cots for Tots - NICU		159,805	(234,051)	(74,246)
Wallace & Gromit’s Children’s Charity		<u>6,177</u>	<u>(9,070)</u>	<u>(2,893)</u>
		<u>695,713</u>	<u>(552,800)</u>	<u>142,913</u>
Total funds Group		<u>2,545,097</u>	<u>(2,428,667)</u>	<u>116,430</u>
Charity		<u>1,966,010</u>	<u>(1,824,471)</u>	<u>141,539</u>

NOTES TO THE FINANCIAL STATEMENTS - CONTINUED
for the year ended 31 March 2022

19. MOVEMENT IN FUNDS - continued

Designated Funds:

As described in the accompanying Trustee statement for the year to 31/3/22, the Grand Appeal has a multi-million pound annual commitment to Bristol Children’s Hospital. Some of these projects are described in the Annual Report. Typically the commitment represents over 100 individual projects at any one time. At the time of writing, the largest single commitment is £2 million, and the smallest is £50. Some projects are multi-year commitments, others will take more than 12 months to come to fruition. The Total Funds figure includes property, used as Family Accommodation and the charity’s HQ, which, allowing for depreciation, is valued at nearly £2 million.

Transfers between funds:

The transfers between funds are due to movements in designated funds.

20. CAPITAL COMMITMENTS

	2022 £	2021 £
Designated funds: Contracted but not provided for in the financial statements	<u>2,180,954</u>	<u>3,021,264</u>

21. RELATED PARTY DISCLOSURES

During the year the charity recharged wages paid on behalf of the trading subsidiary, Cracking Enterprises Limited, totalling £185,219 (2021: £152,521). In line with the intentions of the trading subsidiary the profits for the prior year, totalling £69,317 (2021: £94,426) were paid to the charity during the year. There was a debtor of £289,985 (2021: £289,985) owing from the trading subsidiary to the charity as at the year end.

Simon Cooper and Jos Moule are directors of Cracking Enterprises Limited and Trustees of Wallace & Gromit's Children's Foundation. Nicola Masters is a director of Cracking Enterprises Limited and a director of Wallace & Gromit's Children's Foundation.

Wallace & Gromit's Children's Foundation and Cracking Enterprises Limited incurred legal costs of £21,397 (2021: £52,148) and £Nil (2021: £2,090) respectively with Veale Wasbrough Vizards LLP during the year. There was a creditor of £960 (2021 £Nil) owing as at the year end in Wallace & Gromit’s Children’s Foundation. Jos Moule, is a partner in Veale Wasbrough Vizards LLP.

Simon Cooper is a Trustee of Wallace & Gromit's Children's Foundation and a Trustee of the Musicspace Trust. Music therapy within the Bristol Children's Hospital is provided by the Musicspace Trust and funded by the charity at a cost of £46,094 (2021: £11,899). There was a creditor of £Nil (2021 - £3,125) owing as at the year end.

Nick Park, Peter Lord and David Sproxton are Patrons of Wallace & Gromit's Children's Foundation Limited and Directors of Aardman Animations Limited.

Angie Last is a Trustee of Wallace & Gromit's Children's Foundation and an employee of Aardman Animations Limited.

NOTES TO THE FINANCIAL STATEMENTS - CONTINUED
for the year ended 31 March 2022

21. RELATED PARTY DISCLOSURES - continued

Cracking Enterprises Limited incurred net costs of £40,162 (2021: £32,422) relating to Aardman's support for the Gromit Unleashed, Gromit Unleashed 2 and Shaun in the City arts trails which have raised to date around £6million for the primary purpose of Wallace & Gromit's Children's Foundation. This support covers web and app development for the charity's brands, rights, intellectual property, the development of merchandise and associated royalties, licensing and design.

22. FRC ETHICAL STANDARD - PROVISIONS AVAILABLE FOR SMALL ENTITIES

In common with many other businesses of our size and nature we use our auditors to prepare and submit returns to the tax authorities and assist with the preparation of the financial statements.

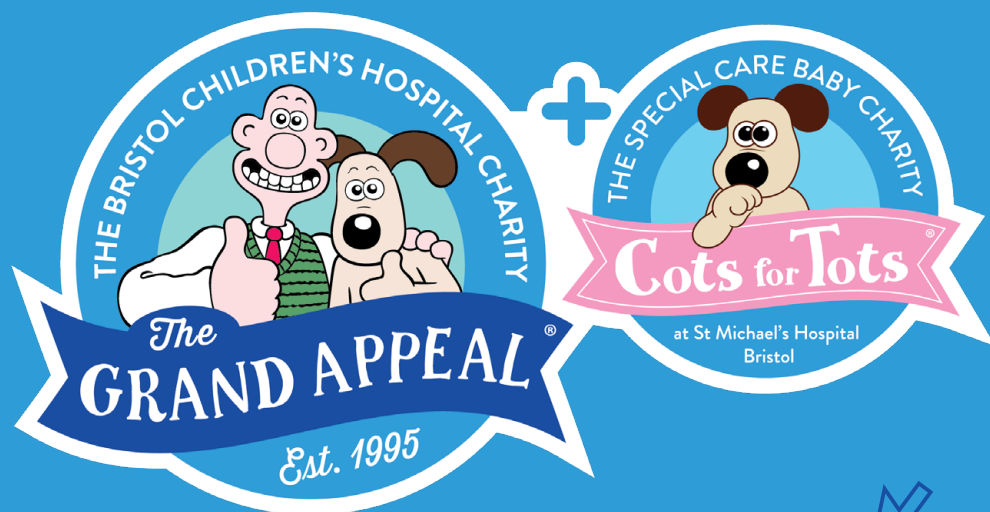
23. PURPOSE OF RESTRICTED FUNDS

The Grand Appeal receives many donations from supporters, donors, patients, friends, families and the general public with a specific designation. The Appeal acknowledges that all donations received for a specific ward or department should be spent according to the needs of the donor and therefore retains the above funds to ensure full compliance with the individual donor's intentions. These funds are then used to provide additional 'added value' facilities and to comply with donor wishes.

24. POST BALANCE SHEET EVENTS

The purchase of a property opposite Bristol Children's Hospital to be used for the charity's primary purpose activity relating to BCH and NICU completed on 16 November 2022 at a cost of £500,000. The property will specifically support additional recruitment into the children's hospital and the NICU.





grandappeal.org.uk

