

THE GUIDE ASSOCIATION SHROPSHIRE COUNTY

CONSOLIDATED ACCOUNTS

FOR THE YEAR ENDED

31 July 2025

REGISTERED CHARITY NO. 1035091

THE GUIDE ASSOCIATION SHROPSHIRE COUNTY
MEMBERS REPORT FOR THE YEAR ENDED 31 JULY 2025

Membership of the County Executive Committee comprises:-

Voting Members

Ms Sarah Myers	Role ended 31.08.24	The County Commissioner
Miss J Hurst	Role began 01.09.24	The County Commissioner
Miss C Coleman	Role ended 31.08.24	The Assistant County Commissioner
Mrs S Smith-Roe	Role began 17.07.25	The Assistant County Commissioner
Mrs V Smith-Roe		The County Treasurer
Miss J Hurst	Role ended 31.08.24	} The Division Commissioners
Mrs L Mitchell	Role ended 01.10.24	
Mrs N Fancett		
Miss R Harding	Role ended 28.02.25	
Mrs A McLaughlin (nee Taylor)	Role ended 02.07.25	
Miss A Gray	Role ended 31.05.25	
Mrs D Griffiths		
Mrs C Nockles	Role began 01.09.24	

Non Voting Members

Mrs M Rayner	} Chairman/Trefoil Guild Specialist Advisers
Mrs S Smith-Roe	
Mrs M Wynn	

**Charity registered
number**

1035091

Principal Office

3&4 Conwy House
St Georges Court
St Georges Road
Donnington
Telford
TF2 7BF

Independent Review

WR Partners
Belmont House
Shrewsbury Business Park
Shrewsbury
Shropshire
SY2 6LG

Main Bankers

CAF Bank Ltd
25 King's Hill
King's Hill
West Malling
Kent
ME19 4JQ

THE GUIDE ASSOCIATION SHROPSHIRE COUNTY
ANNUAL REPORT FOR THE YEAR ENDED 31 JULY 2025

The County Executive Committee, who act as trustees, in accordance with the bye law 9.2C of the Royal Charter of The Guide Association, shall be responsible for directing the development of the principles and aims of Girlguiding, within the County of Shropshire, in accordance with the current issue of:-

The Royal Charter of Bye Laws

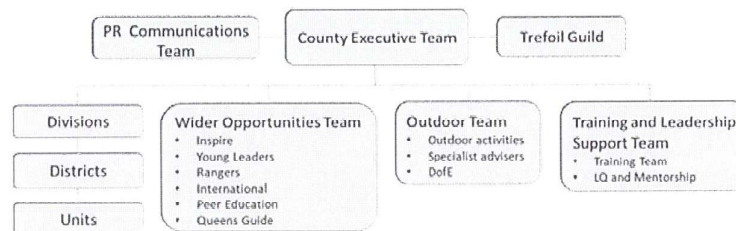
The Guiding Manual

The Handbooks

The Guide Association is an unincorporated charity, constituted under a Royal Charter granted 14 December

Methods, policies & procedures for the appointment and induction of new trustees

The trustees are the voting members of the Executive Committee. They are the County Commissioner, who is appointed by the Midland Region Commissioner, her Assistant, the County Treasurer and the Division Commissioners all of whom are the appointees of the County Commissioner in consultation with the other. The Management structure of Girlguiding Shropshire is as follows. All communications are bi-directional.



Objective and activities

Girlguiding UK is the UK's largest voluntary organisation for girls and young women. Girlguiding Shropshire is set within Girlguiding Midlands Region and is therefore an integral part of the National Association.

Girlguiding UK's strategy - Girls can do anything

Girlguiding exists to help girls and young women find their voice, and build skills and confidence – inspiring them to discover the best in themselves and empower them to make a positive difference in their community.

Goals

- Exceptional experiences for girls
- Rewarding volunteer experience
- Impactful and inclusive
- Getting the basics right

Our Achievements and Performance for the period ending 31st July 2025

Exceptional experiences for girls

In 2024/2025 there were plans made for another county camp in 2027, building on the great success of Element camp in the summer of 2024. We are hoping to use the same campsite at Chetwynd Deer Park near The year has been spent organising a Brownie camp, to be called Sparkle, and to be held at Patshull Park Activity Centre at the end of August 2025. The Adventure team are hoping to build on the enthusiasm of the Elements camp and encourage volunteers to take their Brownie units camping or on residential events. We were very kindly donated some funding and the executive committee agreed to utilise some of the money to launching the new Young Leader development programme. We recruited a new Young Leader lead volunteer and set about designing and ordering plastic wallet folders with a notebook and county pen. Included in the pack is a postcard of the 12 elements of the programme and a Queen's Guide award booklet. Each Young Leader registering for the programme will be given a pack to keep their evidence for the Several units from the county attended the region led Magical Midlands event at Uttoxeter racecourse on 12th July 2025. They had a fantastic time with lots of fun activities and were entertained at the end of the event by an ABBA and Taylor Swift tribute acts. The feedback was very positive despite it being one of the hottest

Rewarding volunteer experience

Training

The September training week, in which a separate session is held in each of the seven divisions, was based on Skills builder and Unit meeting activities which the volunteers could use in their units. This was well attended in each division and a chance to socialise with fellow volunteers. The 2025 county day was held in Bayston Hill on the 5th of April and the Training team put together a selection of activities. There was also a presentation from The training team has continued to deliver mandatory training which supports the Learning and Development Platform (LDP). Safer Guiding has replaced Safe Space training and is now available on the LDP, the team are looking to deliver a face-to-face format, in the future, for those who are unable to complete in this way. First Our Training team lead has changed so we look forward to working with her. Leaders in training continue to benefit from the focus of our Leaders in Training co-ordinator and the mentor team.

Awards

In 2024/2025 we were delighted that one of our members received a Laurel award. We held an afternoon tea party to celebrate her receiving her award which was presented by the Region Chief. Her good friend, with whom she had attended the local guide unit, surprised her by travelling from the other side of the Midlands to We were pleased that 3 of our members were recognised with Midland Region Chief Commissioner Awards which were presented at Sandon Hall followed by an afternoon tea. 37 Long service awards were awarded in the reporting period including 2 50-year and 3 40-year awards. It is fantastic to be able to celebrate their dedication to Girlguiding.

International

Girlguiding Shropshire members attended the international selection event at Midlands Region, where volunteers and girls were selected to participate in trips to the Azores and Tanzania.

Inclusive and impactful

PR

Membership numbers remain steady this year. We have a county gazebo and feather flags with the new branding available for loan. Banners or pull up displays have been obtained for divisions according to their requests. We have worked with the Growth and Retention Team to produce some locally focused material

Brilliant Basics

Financial Governance

Half of the Postcode Lottery match fund grant was used to support subscriptions with the rest to be used for the following year. The grant from the Lord Leverhulme's Charitable Trust continues to be used to support our work. Currently we have made improvements to our headquarters, our residential property Lyneal, the Young The Finance Committee and our Treasurer have worked diligently to reduce our expenditure. Previously we have produced a handbook which was revised annually but it was decided, in conjunction with the executive committee, that the cost of production and postage was no longer viable and as the information quickly requires The finance committee received a donation from a vice president which she wished to be used toward international travel. Several grants have been awarded to girls participating in international trips, contributing

Risk Governance

The Risk committee didn't meet during the reporting period due to lack of members; we are working on recruitment of members to the committee and hope to hold a meeting to review the risk register as soon as

Admin

Our county administrator has stepped back from the role, and we are looking to recruit a replacement. This would help the Training Team to tailor course requirements to county needs and aid our compliance.

County Headquarters

Girlguiding Shropshire county headquarters is based in Telford and Wrekin council premises and the County Executive committee agreed to renew the lease on the property. Improvements have been made to our suite

Lyneal Activity Centre

Lyneal usage increases year on year, proving to be popular with Guiding and Scouting units and regular day time bookings. The Executive committee monitors the management of the property, led by the Lyneal lead volunteer. Improvements and maintenance continue to be made with help from working parties made of volunteers with major works being undertaken by trade people. Grants have been obtained where possible with Many thanks go to our volunteers for helping, our Lyneal lead volunteer and county treasurer for ensuring our activity centre is well maintained and an amazing asset for the county members.

Trustees

In this financial year to July 2025, a volunteer for the role of assistant county commissioner has been found and therefore will become a trustee. She will be working hard to recruit some division commissioners, who will also

THE GUIDE ASSOCIATION SHROPSHIRE COUNTY
FINANCIAL REPORT FOR THE YEAR ENDED 31 JULY 2025

Financial Review

This year we have continued to look at our expenditure and reduce where possible given the slowly decreasing number of members which impacts our subscriptions income. We have been lucky to have received some donations and grants which we have used to subsidise the costs to our members

Reserves Policy

The trustees have agreed to maintain a policy of 3 years worth of rent and service charge payments for the county office which equates to approximately £52,000 and will be reviewed at every financial year end

The bank balances at the year end continue to be in excess of this policy and we expect to spend funds in line with this policy in future financial periods

Free reserves at the year end were £139,183 which are a representation of the charity's unrestricted funds (2024 were £139,530)

Public Benefit

In planning our activities for the year the trustees have had due regard for the Charity Commission's guidance on public benefit. In fulfilling the aim of Guiding, being the development of girls and young women, the Charity has organised activities and supported leaders in running events physically and virtually. Girlguiding Shropshire continues to support the national Girlguiding programme by continuing to train its members free of charge

On behalf of the County Executive Committee



.....
Mrs Victoria Smith-Roe
County Treasurer

Date: 30/03/2026
.....

INDEPENDENT EXAMINER'S REPORT

TO THE TRUSTEES OF THE GUIDE ASSOCIATION SHROPSHIRE

Independent Examiner's Report

I report to the charity trustees on my examination of the accounts of the charity for the period ended 31 July 2025 which are set out on pages 5 to 7.

Responsibilities and basis of report

As the charity's trustees you are responsible for the preparation of the accounts in accordance with the requirements of the Charities Act 2011 ('the Act').

I report in respect of my examination of the charity's accounts carried out under section 145 of the Act and in carrying out my examination I have followed all the applicable Directions given by the Charity Commission under section 145(5)(b) of the Act.

Independent examiner's statement

I have completed my examination. I confirm that no material matters have come to my attention in connection with the examination giving me cause to believe that in any material respect:

1. accounting records were not kept in respect of the charity as required by section 130 of the Act; or
2. the accounts do not accord with those records.

I have no concerns and have come across no other matters in connection with the examination to which attention should be drawn in this report in order to enable a proper understanding of the accounts to be reached.

Signed:

Tim Lunt

Dated: 13/05/2026

Tim Lunt BA (Hons) FCCA MTPI

WR Partners
Chartered Accountants
Belmont House
Shrewsbury Business Park
Shrewsbury
Shropshire
SY2 6LG

THE GUIDE ASSOCIATION SHROPSHIRE COUNTY
RECEIPTS AND PAYMENTS ACCOUNT
FOR THE YEAR ENDED 31 JULY 2025

	Unrestricted	Restricted	Designated	Endowment	2025 Total	2024 Total
Receipts						
Donations & Grants	200	1,500	10,000	-	11,700	25,000
Letting fees	8,255	-	-	-	8,255	6,777
Members subscriptions	23,778	-	-	-	23,778	22,725
Investment income	2,846	-	-	372	3,218	34,917
Other income	12,003	3,559	-	-	15,562	66,990
Sale of badges	23,406	-	-	-	23,406	22,376
Total receipts	70,488	5,059	10,000	372	85,919	178,785
Payments						
Direct charitable expenditure	66,519	21,214	3,676	-	91,409	221,572
Management and administration	4,318	-	-	-	4,318	4,256
	-	-	-	-	-	-
Total payments	70,837	21,214	3,676	-	95,727	225,828
Surplus / (Deficit) of receipts over payments	(349)	(16,155)	6,324	372	(9,808)	(47,043)
Net Movement in funds	(349)	(16,155)	6,324	372	(9,808)	(47,043)
Bank and cash balances at 1st August 2024	139,532	18,359	7,925	6,894	172,710	219,753
Bank and cash balances at 31st July 2025	139,183	2,205	14,249	7,267	162,904	172,709

THE GUIDE ASSOCIATION SHROPSHIRE COUNTY
STATEMENT OF ASSETS AND LIABILITIES
AS AT 31 JULY 2025

	Type	2025	2024
<u>Cash Funds</u>			
Bank and cash balances	Unrestricted	139,183	139,530
Bank and cash balances	Designated	14,249	7,925
Bank and cash balances	Restricted	2,205	18,359
Bank and cash balances	Endowment	7,267	6,895
Total cash funds		<u>162,904</u>	<u>172,710</u>
<u>Investment Assets</u>			
Charifund 1,876 units	Unrestricted		
Charifund 409 units	Endowment	6,433	6,204
Quilter Investments	Unrestricted	105,898	102,235
		<u>112,331</u>	<u>108,439</u>
<u>Assets retained for the charity's own use</u>			
Freehold property Lyneal Centre, Lyneal	Unrestricted	204,171	204,171
Fixtures, fittings and equipment Lyneal Centre	Unrestricted	10,000	10,000
Badges & Office Stocks	Unrestricted	6,342	7,592
Sundry Debtors	Unrestricted	818	872
		<u>221,331</u>	<u>222,635</u>
<u>Liabilities</u>			
Sundry Creditors	Unrestricted	1,518	1,206

These accounts were approved by



Mrs V Smith-Roe
County Treasurer

Date: 30/03/2026



Miss Jane Hurst
County Commissioner

Date: 8/4/2026

THE GUIDE ASSOCIATION SHROPSHIRE COUNTY
NOTES TO THE ACCOUNTS 2025

	<u>Opening Balance</u>	<u>Receipts</u>	<u>Payments</u>	<u>Transfer</u>	<u>Surplus /(deficit) of receipts over payments</u>	<u>Closing Balance</u>
<u>Unrestricted Funds</u>						
Shropshire Main	100,290	36,931	(41,153)	2,600	(1,621)	98,669
Lyneal Activities Centre	34,020	10,416	(9,517)	(600)	299	34,319
Badge Account	4,649	23,141	(18,902)	(3,000)	1,239	5,888
Training Committee	573		(1,267)	1,000	(267)	306
	<u>139,532</u>	<u>70,488</u>	<u>(70,837)</u>	<u>-</u>	<u>(350)</u>	<u>139,183</u>
<u>Restricted Funds</u>						
County Camp 2024	18,359	3,559	(19,714)		(16,155)	2,205
Tesco Grant (Lyneal)		1,500	(1,500)		-	-
<u>Designated Funds</u>						
Rutler Fund	7,925		(316)	-	(316)	7,609
Leverhulme Fund		10,000	(3,360)		6,640	6,640
<u>Endowment Fund</u>						
Elizabeth Mowat Memorial Fund	6,894	372		-	372	7,267
	<u>172,710</u>	<u>85,919</u>	<u>(95,727)</u>	<u>-</u>	<u>(9,810)</u>	<u>162,904</u>

The County Camp made a slight profit which we have ringfenced for the next county event
The Leverhulme trust gave us general funding for running our charity

The Elizabeth Mowat Memorial Fund was set up in February 1979 following the receipt of £1,000. The income arising is to be applied at the absolute discretion of the County Commissioner for charitable purposes connected with the Guide movement in the county of Shropshire.
Some grants have been made this year

THE GUIDE ASSOCIATION SHROPSHIRE COUNTY
CONSOLIDATED RECEIPTS AND PAYMENTS ACCOUNTS
FOR THE YEAR ENDED 31st JULY 2025

	Main	Lyneal	Badge	Mowat Swannick	Training	2025 Total	2024 Total
Receipts							
Donations	10,200	1,500				11,700	25,000
Letting fees	42	8,213				8,255	6,777
Members subscriptions	23,778					23,778	22,725
Investment income	2,351	495		372		3,218	34,917
Other income	14,066	1,496				15,562	66,990
Sale of merchandise	53	212	23,141			23,406	22,376
Total receipts	50,490	11,916	23,141	372	-	85,919	178,784
Payments							
Direct charitable expenditure	60,525	10,908	18,709		1,267	91,409	221,572
Management and administration	4,017	108	193			4,318	4,256
Total payments	64,542	11,016	18,902	-	1,267	95,727	225,828
Inter accs transfers eliminate	2,600	(600)	(3,000)	-	1,000		
Surplus / (Deficit) of receipts over payments	(11,452)	300	1,239	372	(267)	(9,000)	(47,044)

Bank & Cash

	Schedule	Type	2025	2024
CAF Current Account 00015665	Main	Unrestricted	21,653.20	13,416.51
CAF Savings Account 00092272	Main	Unrestricted	77,016.15	86,872.63
<i>Decision to move more funds to the savings</i>	<i>Main</i>	<i>Designated</i>	<i>14,248.98</i>	<i>7,925.00</i>
	<i>Main</i>	<i>Restricted</i>	<i>2,204.82</i>	<i>18,359.48</i>
Lloyds Current Account 00724365	Lyneal	Unrestricted	11,914.09	11,509.66
CAF Gold Account 00082024	Lyneal	Unrestricted	22,405.32	22,509.87
Lloyds Treasurers Account 00115010	Badge	Unrestricted	5,842.57	4,234.11
Cash in hand	Badge	Unrestricted	45.51	414.63
<i>Lloyds Account 01450277</i>	<i>Mowat</i>	<i>Endowment</i>	<i>7,266.57</i>	<i>6,894.37</i>
Lloyds Business Account 00972834	Training	Unrestricted	305.76	572.37
Cash in hand	Training	Unrestricted	0.64	0.64
			<hr/>	<hr/>
			162,904	172,709
			<hr/>	<hr/>

Investments

	Schedule	Type	2025	2024
Charifund 409 units	Mowat	Endowment	6,433	6,204
Quilter	Main	Unrestricted	105,898	102,235
			-	
			<u>112,331</u>	<u>108,439</u>

Fixed Assets

	Schedule	2025	2024
Lyneal Centre, Lyneal	Lyneal	190,000	190,000
Solar panels at above	Lyneal	14,171	14,171
Fixtures fittings equip at above	Lyneal	10,000	10,000
		<u>214,171</u>	<u>214,171</u>

<u>Stock</u>			
Stock of badges	Schedule	2025	2024
	Badge	6,342	7,592
		<u>6,342</u>	<u>7,592</u>

Sundry Debtors

	Schedule	2025	2024
Badge sales	Badge	708	753
Franking Machine	Badge	111	119
		<u>818</u>	<u>872</u>

Sundry Creditors

	Schedule	2025	2024
Badge invoices owing	Badge	1,436	1,050
Badge customer credits	Badge	82	156
		<u>1,518</u>	<u>1,206</u>

