

THE GUIDE ASSOCIATION SHROPSHIRE COUNTY

CONSOLIDATED ACCOUNTS

FOR THE YEAR ENDED

31 July 2024

REGISTERED CHARITY NO. 1035091

THE GUIDE ASSOCIATION SHROPSHIRE COUNTY

MEMBERS REPORT FOR THE YEAR ENDED 31 JULY 2023

Membership of the County Executive Committee comprises:-

Voting Members

Ms Sarah Myers	The County Commissioner
Miss C Coleman	The Assistant County Commissioner
Mrs V Smith-Roe	The County Treasurer
Miss J Hurst	} The Division Commissioners
Mrs L Mitchell	
Mrs N Fancett	
Miss R Harding	
Miss A Taylor	
Miss A Gray	
Mrs D Griffiths	

Non Voting Members

Mrs M Rayner	} Chairman/Trefoil Guild
Mrs S Smith-Roe	
Mrs M Wynn	
Mrs C Nockles	
	} Specialist Advisers
	} Joint Division Commissioner - Ludlow

Charity registered
number

1035091

Principal Office

3&4 Conwy House
St Georges Court
St Georges Road
Donnington
Telford
TF2 7BF

Independent Review

WR Partners
Belmont House
Shrewsbury Business Park
Shrewsbury
Shropshire
SY2 6LG

Main Bankers

CAF Bank Ltd
25 King's Hill
King's Hill
West Malling
Kent
ME19 4JQ

**THE GUIDE ASSOCIATION SHROPSHIRE COUNTY
ANNUAL REPORT FOR THE YEAR ENDED 31 JULY 2024**

The County Executive Committee, who act as trustees, in accordance with the bye law 9.2C of the Royal Charter of The Guide Association, shall be responsible for directing the development of the principles and aims of Girlguiding, within the County of Shropshire, in accordance with the current issue of:-

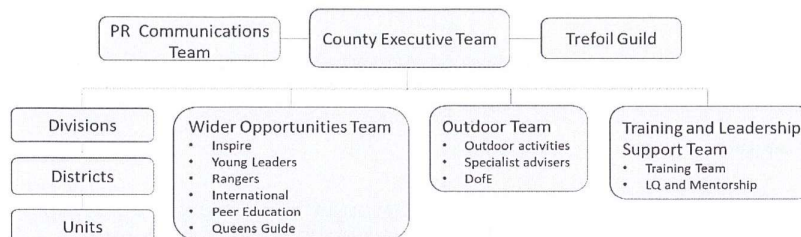
The Royal Charter of Bye Laws
The Guiding Manual
The Handbooks

The Guide Association is an unincorporated charity, constituted under a Royal Charter granted 14 December 1922.

Methods, policies & procedures for the appointment and induction of new trustees

The trustees are the voting members of the Executive Committee. They are the County Commissioner, who is appointed by the Midland Region Commissioner, her Assistant, the County Treasurer and the Division Commissioners all of whom are the appointees of the County Commissioner in consultation with the other trustees. Four meetings are held each year in line with the County Constitution.

The Management structure of Girlguiding Shropshire is as follows. All communications are bi-directional.



Objectives and Activities

Girlguiding UK is the UK's largest voluntary organisation for girls and young women. Girlguiding Shropshire is set within Girlguiding Midlands Region and is therefore an integral part of the National Association.

Girlguiding UK's strategy - Today, tomorrow, together

Girlguiding exists to help girls and young women find their voice, and build skills and confidence – inspiring them to discover the best in themselves and empower them to make a positive difference in their community. We help girls know they can do anything.

Goals

- Exceptional experiences for girls
- Rewarding volunteer experience
- Impactful and inclusive
- Getting the basics right

Achievements and Performance

Exceptional experiences for girls

In 2023/24 we planned to hold 3 girl events, concluding with a large-scale county camp to celebrate Girlguiding in Shropshire and to mark the end of the incumbent County commissioner role and appointment of our new County commissioner designate.

The year began with our Fantastic Festivities event in Church Stretton, a world celebration sleepover for Rangers and Young Leaders and older Guides aged 14+. The 28 participants took part in an Indian cooking class, world fusion dancing, crafts from around the world and a midnight walk. We also had talks from the 2023 International participants to encourage young members to seek opportunities for 2025. Attendance was improved on last year's Let loose in Ludlow event with c. 30% of our Ranger/Young Leader membership attending (increase of 10% from the previous year). This format is growing successfully and would be a positive inclusion in the 2025 programme to continue to build engagement.

In 2023, we had designed an all-section day event called GOALS (Get Out And Learn Skills) with a county football club, unfortunately it wasn't possible to run the event and as such we planned to collaborate with a different provider and hold this event in 2024. Despite positive discussions, we were unable to make the event viable and due to a combination of cost and take up the event was cancelled. Instead, we partnered with a local company to supply a 'football fun' skills session at our county camp which was a successful part of the programme.

The Elements County Camp was held at Chetwynd Deer Park in July, the first county camp for over 5 years. The camp was planned over a 12-month period and ran for 5 days and 4 nights and included a full residential programme for Brownie, Guide and Ranger sections and a visitors day programme for Rainbows and Brownies. In total 750 members took part with 350 adults and young members camping throughout. The subcamps were based on the elements, fire, water, earth and air and we were delighted to have a Brownie subcamp with 50 participants staying under canvas, many for their first Brownie camping experience.

Activities included canoeing, coracling, climbing, swimming, water slides, Rotary Aquabox, football, escape room tents, Traditional camping skills, a variety of crafts and skills-based activities, chill out zone, musical theatre, forest bathing, wellbeing and storytelling, parades, campfires, silent disco and cinema and a camp wide game. A new county song book was launched and hopefully this resource will grow over time. The camp shop and the café were also well visited, and we celebrated the achievement of a Queen's Guide Award, camp birthdays and long service awards. Thanks to our volunteers, suppliers and the Deer Park staff for their hard work and support which ensured the event was well received by all.

The Shropshire Circles Challenge badge was launched in 2022 incorporating 8 topics: Sing, Travel, Explore, Play, Learn, Create, Cook and Share. This concluded in 2024 with c.500 participants having taken part. A new challenge has been designed for 2024/25 which encourages members to learn more about our Shropshire county, try new skills and visit locations to have adventures with their unit.

We were delighted that 7 of our 14-24 aged young members completed their Peer Education training. This is a big boost for young members in the county, enabling the Peer Educators to visit units and events in the county to deliver wellbeing topics and activities to support young member welfare.

Rewarding volunteer experience

Training

The September division training week was tailored to best practice requests from each of the divisions ranging from Go training to risk assessments and SEN awareness. The 2024 annual county day was held in Bayston Hill on the 20th of April with a selection of activities for volunteers to take back to their units to supplement the programme, the event was well attended.

Throughout the year the training team has continued to deliver mandated training in support of the webinars available on the new Learning and Development Platform. Additionally, face to face modules to support the completion of the leadership qualification, first response and safe space trainings. In total 19 training events have been delivered in the year. We also thanked 3 of our long-standing trainers who have retired in the past 12 months. Leaders in training have continued to benefit greatly from the focus of our county lead volunteer and the mentor group is building experience in the new qualification and supporting volunteers with the Leadership Development Platform as new courses and functionality are delivered.

Crafty Carols

In November 2023, we held a fun afternoon in Shrewsbury with an opportunity to learn some new Christmas crafts and sing carols, a lovely end to the year.

Awards

In 2023/24 we awarded 34 long service awards including 6, 40-year awards. 19 volunteers gained their leadership qualification, and 1 Young Leader gained their qualification. In December 2023, 2 members were recognised with Midlands Region Chief Commissioner Awards. Over this 12-month period we have celebrated 4 members attaining their Queens Guide Award, which is an amazing achievement, 1 member completing her award in six months. Their determination and dedication to achieve this challenging award is commendable.

International

Girlguiding Shropshire participants attended the International selection event at Midlands Region, where 2 volunteers and 4 young members were successfully offered the opportunity to take part in International trips in 2024 including Edinburgh ICE and Tanzania. Another volunteer was also selected to be part of a GOLD (Guiding Overseas Linked with Development) group in Jamaica This is a brilliant outcome to promote international opportunities within our membership.

Inclusive and impactful

PR

Membership numbers have remained steady this year. Volunteer recruitment has continued to be a priority with activity being more localised than the previous year. Additional PR material has been acquired and is available for loan as a result of the national rebranding activity.

Brilliant basics

Financial Governance

The Executive Committee agreed to maintain 2024 subscriptions levy for a 4th year to support units in the cost-of-living crisis. The committee agreed a slight increase for 2025 of 30p per member reflecting the increase in running costs due to inflation.

Girlguiding Shropshire was fortunate in receiving a Postcode Lottery match fund grant in 2024 and a grant from Lord Leverhulme's Charitable Trust to support the running costs of Girlguiding in the county which will be a considerable boost to keep the costs of events at an affordable level for members.

Led by the Finance Committee, the Executive Committee undertook a review of financial investments with independent advisers Croft and Oakes. The review resulted in a change of investment approach, with an emphasis on ethical investment. The Executive Committee agreed to retain Croft and Oakes to perform a 12-month review in 2025.

The Finance committee has received a small number of nominations during the year for grants from the 'Girls Have Adventures' legacies to support young members to attend large scale events and International trips.

Risk Governance

The committee meets twice yearly with an annual risk session at the Executive Committee Meeting in November. The county risk register has been updated following the November 2023 session and an action plan continues to be monitored.

Admin

Good progress has continued with enquiries and waiting lists. The appointment of an administrator for safe space and first response training has been successful and compliance monitoring has been strengthened this year with additional training organised as required.

Website upgrade and rebranding

The Girlguiding Shropshire website has been successfully upgraded and rebranded which has improved our ability to maintain and amend the pages on an ongoing basis. Our partnership with a local website developer has enabled us to attain affordable charity support and make this upgrade more accessible.

County Headquarters

Girlguiding Shropshire county headquarters is based at Telford and Wrekin Council premises, the current 3-year lease is due to end in October 2024. County Executive agreed at the May Executive meeting to sign a new 3-year lease for the renewal point in October 2024.

Lyneal Activity Centre

Lyneal usage continues to increase, and a more regular number of local day time bookings have been beneficial in maintaining regular income alongside other Girlguiding and Scouting hirers. The Executive committee has monitored the ongoing management of the building, led by the Lyneal lead volunteer. Suppliers have been hired to undertake some larger activities and a number of successful working party events organised, supporting the cleaning and completion of smaller jobs.

The Executive committee agreed to amend the charging structure this year to bring it in with other providers and simpler for groups to budget for. Thanks goes to our Lyneal lead volunteer and county treasurer who have been instrumental in ensuring Lyneal is well maintained and available to all.

Trustees

In this financial year to July 2024, no new trustees have been appointed. I would like to thank the county team, our president and trustees for their hard work and support during my tenure as County commissioner. Best wishes to the new team as they move forward with the leadership of Girlguiding in Shropshire during the coming 5 years

THE GUIDE ASSOCIATION SHROPSHIRE COUNTY

FINANCIAL REPORT FOR THE YEAR ENDED 31 JULY 2024

Financial Review

This year we have undertaken a review of our investments and moved them onto a managed platform using local Financial Advisers. The Finance Committee agreed this was the best way to continue to manage our funds.

We also maintained the fees we charge to our members by agreeing any shortfall was to be covered by our cash savings. This was in acknowledgement to the funds we have and how to best support our members.

Reserves Policy

The trustees have agreed to maintain a policy of 3 years worth of rent and service charge payments for the county office which equates to approximately £52,000 and will be reviewed at every financial year end

The bank balances at the year end continue to be in excess of this policy and we expect to spend funds in line with this policy in future financial periods

Free reserves at the year end were £139,530 which are a representation of the charity's unrestricted funds (2023: £199,950)

Public Benefit

In planning our activities for the year the trustees have had due regard for the Charity Commission's guidance on public benefit. In fulfilling the aim of Guiding, being the development of girls and young women, the Charity has organised activities and supported leaders in running events physically and virtually. Girlguiding Shropshire continues to support the national Girlguiding programme by continuing to train it's members free of charge

On behalf of the County Executive Committee



.....
Mrs Victoria Smith-Roe
County Treasurer

Date:

23/01/2025
.....

INDEPENDENT EXAMINER'S REPORT
TO THE TRUSTEES OF THE GUIDE ASSOCIATION SHROPSHIRE

Independent Examiner's Report

I report to the charity trustees on my examination of the accounts of the charity for the period ended 31 July 2024 which are set out on pages 5 to 7.

Responsibilities and basis of report

As the charity's trustees you are responsible for the preparation of the accounts in accordance with the requirements of the Charities Act 2011 ('the Act').

I report in respect of my examination of the charity's accounts carried out under section 145 of the Act and in carrying out my examination I have followed all the applicable Directions given by the Charity Commission under section 145(5)(b) of the Act.

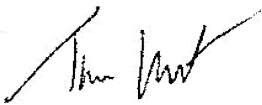
Independent examiner's statement

I have completed my examination. I confirm that no material matters have come to my attention in connection with the examination giving me cause to believe that in any material respect:

1. accounting records were not kept in respect of the charity as required by section 130 of the Act; or
2. the accounts do not accord with those records.

I have no concerns and have come across no other matters in connection with the examination to which attention should be drawn in this report in order to enable a proper understanding of the accounts to be reached.

Signed:



Dated: 19/02/2025

Tim Lunt BA (Hons) FCCA MTPI

WR Partners
Chartered Accountants
Belmont House
Shrewsbury Business Park
Shrewsbury
Shropshire
SY2 6LG

THE GUIDE ASSOCIATION SHROPSHIRE COUNTY
RECEIPTS AND PAYMENTS ACCOUNT
FOR THE YEAR ENDED 31 JULY 2024

	Unrestricted	Restricted	Designated	Endowment	2024 Total	2023 Total
Receipts						
Donations & Grants	25,000	-	-	-	25,000	-
Letting fees	6,777	-	-	-	6,777	5,541
Members subscriptions	22,725	-	-	-	22,725	23,586
Investment income	34,563	-	-	354	34,917	48,740
Other income	5,480	61,510	-	-	66,990	29,017
Sale of badges	22,376	-	-	-	22,376	26,337
Sundry	-	-	-	-	-	-
Total receipts	116,921	61,510	-	354	178,785	133,222
Payments						
Direct charitable expenditure	150,304	46,667	1,807	375	199,153	68,320
Management and administration	26,676	-	-	-	26,676	23,084
Total payments	176,979	46,667	1,807	375	225,828	91,404
Surplus / (Deficit) of receipts over payments	(60,058)	14,843	(1,807)	(21)	(47,043)	41,818
Net Movement in funds	(60,058)	14,843	(1,807)	(21)	(47,043)	41,818
Bank and cash balances at 1st August 2023	199,590	3,516	9,732	6,915	219,753	177,935
Bank and cash balances at 31st July 2024	<u>139,532</u>	<u>18,359</u>	<u>7,925</u>	<u>6,894</u>	<u>172,710</u>	<u>219,753</u>

THE GUIDE ASSOCIATION SHROPSHIRE COUNTY
STATEMENT OF ASSETS AND LIABILITIES
AS AT 31 JULY 2024


	Type	2024	2023
<u>Cash Funds</u>			
Bank and cash balances	Unrestricted	139,530	199,590
Bank and cash balances	Designated	7,925	9,732
Bank and cash balances	Restricted	18,359	3,516
Bank and cash balances	Endowment	6,895	6,915
Total cash funds		172,709	219,753
<u>Investment Assets</u>			
Charifund 1,876 units	Unrestricted	-	26,991
Charifund 409 units	Endowment	6,204	5,885
Quilter Investments	Unrestricted	102,235	-
		108,439	32,876
<u>Assets retained for the charity's own use</u>			
Freehold property Lyneal Centre, Lyneal	Unrestricted	204,171	204,171
Fixtures, fittings and equipment Lyneal Centre	Unrestricted	10,000	10,000
Badges & Office Stocks	Unrestricted	7,592	9,233
Sundry Debtors	Unrestricted	871	1,665
		222,634	225,069
<u>Liabilities</u>			
Sundry Creditors	Unrestricted	1,206	897

These accounts were approved by



Mrs V Smith-Roe
County Treasurer

Date: 23/01/2025



Ms Sarah Myers
County Commissioner

Date: 11/2/25

THE GUIDE ASSOCIATION SHROPSHIRE COUNTY
NOTES TO THE ACCOUNTS 2024

	<u>Opening Balance</u>	<u>Receipts</u>	<u>Payments</u>	<u>Transfer</u>	<u>Surplus /(deficit) of receipts over payments</u>	<u>Closing Balance</u>
<u>Unrestricted Funds</u>						
Shropshire Main	152,898	85,466	(140,375)	2,300	(52,608)	100,290
Lyneal Activities Centre	39,058	9,926	(14,364)	(600)	(5,038)	34,020
Badge Account	6,409	21,433	(20,493)	(2,700)	(1,760)	4,649
Training Committee	1,225	96	(1,748)	1,000	(652)	573
	<u>199,590</u>	<u>116,920</u>	<u>(176,979)</u>	<u>-</u>	<u>(60,058)</u>	<u>139,532</u>
<u>Restricted Funds</u>						
Switzerland 2023 trip	3,516	-	(3,516)	-	(3,516)	-
County Camp 2024	-	61,510	(43,151)	-	18,359	18,359
<u>Designated Funds</u>						
Butler Fund	9,732		(1,807)	-	(1,807)	7,925
<u>Endowment Fund</u>						
Elizabeth Mowat Memorial Fund	6,915	354	(375)	-	(21)	6,893
	<u>219,753</u>	<u>178,784</u>	<u>(225,828)</u>	<u>-</u>	<u>(47,043)</u>	<u>172,709</u>

The Outdoor Activity Centre completed it's spend of the designated maintenance fund

We were given a donation of £10,000 from Mrs Butler's estate to spend at the discretion of the trustees

The Elizabeth Mowat Memorial Fund was set up in February 1979 following the receipt of £1,000. The income arising is to be applied at the absolute discretion of the County Commissioner for charitable purposes connected with the Guide movement in the county of Shropshire. Some grants have been made this year

THE GUIDE ASSOCIATION SHROPSHIRE COUNTY
CONSOLIDATED RECEIPTS AND PAYMENTS ACCOUNTS
FOR THE YEAR ENDED 31st JULY 2024

	Main	Lyneal	Badge	Mowat Swannick	Training	2024 Total	2023 Total
Receipts							
Donations	25,000	-	-	-	-	25,000	-
Letting fees	-	6,777	-	-	-	6,777	5,541
Members subscriptions	22,725	-	-	-	-	22,725	23,586
Investment income	33,816	747	-	354	-	34,917	48,740
Other income	65,018	1,875	-	-	96	66,990	29,017
Sale of merchandise	417	526	21,433	-	-	22,376	26,337
Sundry						-	-
Total receipts	146,976	9,926	21,433	354	96	178,784	133,222
Payments							
Direct charitable expenditure	162,511	14,200	20,318	375	1,748	199,152	68,320
Management and administration	26,337	164	175	-	-	26,676	23,084
Total payments	188,848	14,364	20,493	375	1,748	225,828	91,404
Inter accs transfers eliminate	2,300	(600)	(2,700)	-	1,000	-	-
Surplus / (Deficit) of receipts over payments	(39,572)	(5,038)	(1,760)	(21)	(652)	(47,044)	41,818

Bank & Cash

	Schedule	Type	2024	2023
CAF Current Account 00015665	Main	Unrestricted	13,416.50	56,919.00
	<i>Main</i>	<i>Designated</i>	-	9,732.00
	<i>Main</i>	<i>Restricted</i>	-	3,516.00
CAF Savings Account 00092272	Main	Unrestricted	86,872.63	95,979.00
<i>Decision to move more funds to the</i>	<i>Main</i>	<i>Designated</i>	7,925.00	-
<i>savings</i>	<i>Main</i>	<i>Restricted</i>	18,359.48	-
Lloyds Current Account 00724365	Lyneal	Unrestricted	11,509.66	16,493.00
CAF Gold Account 00082024	Lyneal	Unrestricted	22,509.87	22,565.00
Lloyds Treasurers Account 00115010	Badge	Unrestricted	4,234.11	6,384.00
Cash in hand	Badge	Unrestricted	414.63	25.00
<i>Lloyds Account 01450277</i>	<i>Mowat</i>	<i>Endowment</i>	6,894.37	6,915.00
Lloyds Business Account 00972834	Training	Unrestricted	572.37	1,218.00
Cash in hand	Training	Unrestricted	0.64	7.00
			<hr/>	<hr/>
			172,709	219,753
			<hr/>	<hr/>

Investments

	Schedule	Type	2024	2023
Charifund 1876 units	Main	Unrestricted	-	26,991
Charifund 409 units	Mowat	Endowment	6,204	5,885
Quilter	Main	Unrestricted	102,235	-
			<u>108,439</u>	<u>32,876</u>

Fixed Assets

	Schedule	2024	2023
Lyneal Centre, Lyneal	Lyneal	190,000	190,000
Solar panels at above	Lyneal	14,171	14,171
Fixtures fittings equip at above	Lyneal	10,000	10,000
		<u>214,171</u>	<u>214,171</u>

Stock

	Schedule	2024	2023
Stock of badges	Badge	7,592	9,233
		<u>7,592</u>	<u>9,882</u>

Sundry Debtors

	Schedule	2024	2023
Badge sales	Badge	753	1,606
Franking Machine	Badge	119	59
		<u>872</u>	<u>1,665</u>

Sundry Creditors

	Schedule	2024	2023
Badge invoices owing	Badge	1,050	86
Badge customer credits	Badge	156	811
		<u>1,206</u>	<u>897</u>