

THE GUIDE ASSOCIATION SHROPSHIRE COUNTY

CONSOLIDATED ACCOUNTS

FOR THE YEAR ENDED

31 July 2022

REGISTERED CHARITY NO. 1035091

**THE GUIDE ASSOCIATION SHROPSHIRE COUNTY**  
**MEMBERS REPORT FOR THE YEAR ENDED 31 JULY 2022**

Membership of the County Executive Committee comprises:-

**Voting Members**

Ms Sarah Myers  
Miss C Coleman  
Mrs V Smith-Roe  
Mrs A Ireland  
Mrs Lisa Mitchell  
Mrs Amanda Mitchell  
Miss R Harding  
Miss A Taylor  
Ms D Griffiths  
Mrs L Arthan  
Miss A Gray  
Miss B Farrington

Role ended  
Role started  
Role started

The County Commissioner  
The Assistant County Commissioner  
The County Treasurer

The Division Commissioners

**Non Voting Members**

Mrs M Rayner  
Mrs B Hodges  
Mrs M Wynn

Chairman/Trefoil Guild  
Chair of Lyneal  
Chair of Awards and County Go Co-ordinator

**Charity registered number**

1035091

**Principal Office**

Suites 3&4 Conwy House  
St Georges Court  
St Georges Road  
Donnington  
Telford  
TF2 7BF

**Independent Review**

WR Partners  
Belmont House  
Shrewsbury Business Park  
Shrewsbury  
Shropshire  
SY2 6LG

**Main Bankers**

CAF Bank Ltd  
25 King's Hill  
King's Hill  
West Malling  
Kent  
ME19 4JQ

**THE GUIDE ASSOCIATION SHROPSHIRE COUNTY  
ANNUAL REPORT FOR THE YEAR ENDED 31 JULY 2022**

The County Executive Committee, who act as trustees, in accordance with the bye law 9.2C of the Royal Charter of The Guide Association, shall be responsible for directing the development of the principles and aims of Girlguiding, within the County of Shropshire, in accordance with the current issue of:-

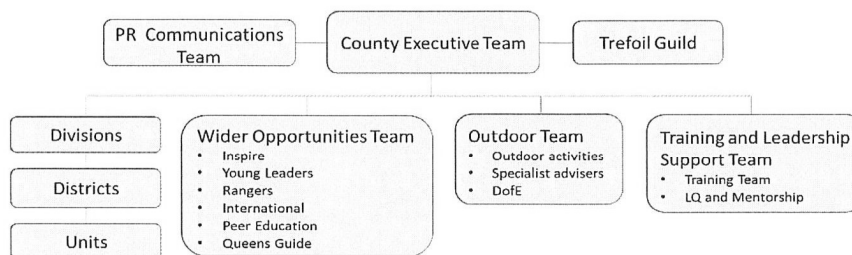
The Royal Charter of Bye Laws  
The Guiding Manual  
The Handbooks

The Guide Association is an unincorporated charity, constituted under a Royal Charter granted 14 December 1922.

Methods, policies & procedures for the appointment and induction of new trustees

The trustees are the voting members of the Executive Committee. They are the County Commissioner, who is appointed by the Midland Region Commissioner, her Assistant, the County Treasurer and the Division Commissioners all of whom are the appointees of the County Commissioner in consultation with the other trustees. Four meetings are held each year in line with the County Constitution.

The Management structure of Girlguiding Shropshire is as follows. All communications are bi-directional.



Objectives and Activities

The Guide Association is the UK's largest voluntary organisation for girls and young women. Girlguiding Shropshire is set within the Guide Association Midlands Region and is therefore an integral part of the National Association.

Girlguiding UK's vision

An equal world where all girls can make a positive difference, be happy, safe and fulfil their potential.

Girlguiding UK's Mission

Through fun, friendship, challenge and adventure we empower girls to find their voice, inspiring them to discover the best in themselves and to make a positive difference in their community.

Our values are our shared commitment to be: Caring, Challenging, Empowering, Fun, Inclusive and Inspiring.

Achievements and Performance

Girlguiding is the leading charity for girls and young women in the UK. We build girls' confidence and raise their aspirations. We give them the chance to discover their full potential and encourage them to be a powerful force for good. We give them a space to have fun. Girlguiding Shropshire continues to offer our young women fun, exciting activities and the chance to make lifelong friends. You'll find us in many communities, helping to give girls a head start in life and encouraging them to be happy, self-confident and curious about the difference they can make.

The pandemic continued to impact youth organisations across the UK and specifically Girlguiding Shropshire activities in the 2021/2022 financial year however, units have progressively returned to regular unit meeting since summer 2021 and through 2022. The County Committees recommenced face to face meetings, supplemented with zoom in order to conduct business in line with our constitution and individual committee's terms of reference. New Division Commissioner (Trustee) appointments were made in Oswestry and Wrekin Divisions as roles expired.

Membership began recovery in advance of the February 2022 annual subscriptions, although still c.1000 lower than prepandemic numbers. Whilst a proportion of our unit teams were able to commit to transitioning meeting to virtual mediums, distributing packs and other equipment to homes where safe to do so, family and work commitments and the technology requirements meant that this understandably wasn't possible or accessible for others. As a result we have, with regret, decided to close c.14 units during the year and Cleobury Mortimer District in Ludlow Division has been temporarily suspended until new volunteers can be found.

The county budget was supported by a proportionate use of some of our savings which aimed to mitigate, to a degree, the potential impact of the increase in the national levy on individual units, cost of living for members and to support large scale events to encourage members to return to and engage with face to face Girlguiding activities. This helped us keep our county levy at a reasonable level and will need to be reviewed again as part of the annual budgeting cycle, dependant on membership numbers. We also received a welcome donation of uniform from a local (closing) stockist on the basis that this be gifted to children who were otherwise unable to purchase uniform and this has helped in areas of hardship. In addition, we have received some generous living legacies which have been ringfenced to support members to have adventures, at the discretion of the Trustees.

During 2021 we created a blended offering to support getting back to unit guiding during the transition. Our Shropshire Way walking challenge was extended for another year and we have now covered the full length of the route. We held our first large scale event since 2019 'Together at Attingham' and just under 1000 members came and joined the fun in our 4 zones 'Be Creative' 'All about Guiding' 'Fun and games' and 'Adventures Outdoors' across 2 days. Discussions are ongoing to further develop the partnership with Attingham Park over the next 2 years. We made 2 rainbow mosaics at the event which were presented by members to the NHS to say thank you, these are sited at the SaTH hospitals in Telford and Shrewsbury. St Mary's Church invited us to rekindle memories of the Guide and Brownie Units which met there in the 1940's having found flags in the tower. This led to our Shropshire memories month in February and an exhibition at the church, where Lady Baden Powell dedicated the first county standard. Our own version of 'The Apprentice comes to Shropshire' had a good response from our Ranger age group and a fun day was held at HQ. Additionally we had a number of young members raising money for Ukrainian Refugees and as a result 2 inspirational girls received the County Recognition Pin.

Celebrating the commitment and achievements of our volunteers is a priority and in 2021 we ran a virtual 'Raise a glass' celebration followed by a volunteer thank you event 'Carols in the Courtyard' at Attingham Park NT. For our H1 2022 awardees we held a face to face cream tea at Hodnet Hall, hosted by our County President.

The County Commissioners Challenge was launched in June 2020 to encourage units to invite the County Commissioner Team to visit meets and take part in activities, this aimed to encourage units to find ways to meet, get back to guiding and enjoying a variety of Girlguiding activities. From unit meetings to camps, breakfast with Santa, cinema evenings, pottery painting, activity weekends and Gold Award parties the take up has been fantastic and when the challenge finishes at the end of 2022 we will have visited and met with 1000 members across the county. A new challenge has been launched for 2022/23.

**THE GUIDE ASSOCIATION SHROPSHIRE COUNTY**  
**FINANCIAL REPORT FOR THE YEAR ENDED 31 JULY 2022**

**Financial Review**

This year we have supported many events across the County and tried to raise the profile of Girlguiding in Shropshire. We took the decision to not increase our subscription payment from members due that many of the units still struggling to recover from lockdown.

We have therefore used some of our savings to cover this increased expenditure on PR representation

There is a trip planned for 2023 to Switzerland which monies have started to be received and these are shown in these accounts as restricted funds

We also were given a donation from a retired member and this is shown as Designated funds

**Reserves Policy**

The trustees have agreed to maintain a policy of 3 years worth of rent and service charge payments for the county office which equates to approximately £52,000 and will be reviewed at every financial year end

The bank balances at the year end continue to be in excess of this policy and we expect to spend funds in line with the new policy in future financial periods.

Free reserves at the year end were £154,917 which are a representation of the charity's unrestricted funds (2021: £169,292).

**Public Benefit**

In planning our activities for the year the trustees have had due regard for the Charity Commission's guidance on public benefit. In fulfilling the aim of Guiding, being the development of girls and young women, the Charity has organised activities and supported leaders in running events physically and virtually. Girlguiding Shropshire continues to support the national Girlguiding programme by continuing to train it's members free of charge.

On behalf of the County Executive Committee



.....  
**Mrs Victoria Smith-Roe**  
**County Treasurer**

Date:

05/01/2023  
.....

## **INDEPENDENT EXAMINER'S REPORT**

### **TO THE TRUSTEES OF THE GUIDE ASSOCIATION SHROPSHIRE**

#### **Independent Examiner's Report**

I report to the charity trustees on my examination of the accounts of the charity for the period ended 31 July 2021 which are set out on pages 5 to 7.

#### **Responsibilities and basis of report**

As the charity's trustees you are responsible for the preparation of the accounts in accordance with the requirements of the Charities Act 2011 ('the Act').

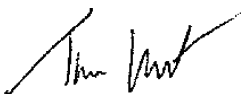
I report in respect of my examination of the charity's accounts carried out under section 145 of the Act and in carrying out my examination I have followed all the applicable Directions given by the Charity Commission under section 145(5)(b) of the Act.

#### **Independent examiner's statement**

I have completed my examination. I confirm that no material matters have come to my attention in connection with the examination giving me cause to believe that in any material respect:

1. accounting records were not kept in respect of the charity as required by section 130 of the Act; or
2. the accounts do not accord with those records.

I have no concerns and have come across no other matters in connection with the examination to which attention should be drawn in this report in order to enable a proper understanding of the accounts to be reached.

Signed: 

Dated: 30/01/2023

Tim Lunt

WR Partners  
Chartered Accountants  
Belmont House  
Shrewsbury Business Park  
Shrewsbury  
Shropshire  
SY2 6LG

**THE GUIDE ASSOCIATION SHROPSHIRE COUNTY**  
**RECEIPTS AND PAYMENTS ACCOUNT**  
**FOR THE YEAR ENDED 31 JULY 2022**

	Unrestricted	Restricted	Designated	Endowment	2022 Total	2021 Total
<b>Receipts</b>						
Donations & Grants	2	-	10,000	1,000	11,002	29
Letting fees	3,756	-	-	-	3,756	135
Members subscriptions	23,302	-	-	-	23,302	20,464
Investment income	3,388	-	-	315	3,703	3,145
Other income	18,852	3,650	-	-	22,502	3,763
Sale of badges	32,510	-	-	-	32,510	19,581
<b>Total receipts</b>	<b>81,810</b>	<b>3,650</b>	<b>10,000</b>	<b>1,315</b>	<b>96,775</b>	<b>47,117</b>
<b>Payments</b>						
Direct charitable expenditure	73,636	-	1,247	390	75,273	42,547
Management and administration	22,549	-	-	-	22,549	20,658
<b>Total payments</b>	<b>96,185</b>	<b>-</b>	<b>1,247</b>	<b>390</b>	<b>97,822</b>	<b>63,205</b>
Surplus / (Deficit) of receipts over payments	(14,375 )	3,650	8,753	925	(1,047 )	(16,088 )
Net Movement in funds	(14,375 )	3,650	8,753	925	(1,047 )	(16,088 )
Bank and cash balances at 1st August 2021	169,292	-	3,893	5,797	178,982	195,070
Bank and cash balances at 31st July 2022	154,917	3,650	12,646	6,722	177,935	178,982

**THE GUIDE ASSOCIATION SHROPSHIRE COUNTY**  
**STATEMENT OF ASSETS AND LIABILITIES**  
**AS AT 31 JULY 2022**

	Type	2022	2021
<b><u>Cash Funds</u></b>			
Bank and cash balances	Unrestricted	154,917	149,293
Bank and cash balances	Restricted	3,650	-
Bank and cash balances	Endowment	6,722	5,797
Bank and cash balances	Designated	12,646	3,893
<b>Total cash funds</b>		<b>177,935</b>	<b>158,983</b>
<b><u>Investment Assets</u></b>			
Charifund 1,876 units	Unrestricted	28,417	28,937
Charifund 409 units	Endowment	6,195	6,309
CAF Income Account	Unrestricted	40,488	47,381
CAF Investments	Unrestricted	8,098	9,476
		<b>83,198</b>	<b>92,103</b>
<b><u>Assets retained for the charity's own use</u></b>			
Freehold property Lyneal Centre, Lyneal	Unrestricted	204,171	204,171
Fixtures, fittings and equipment Lyneal Centre	Unrestricted	10,000	10,000
Badges & Office Stocks	Unrestricted	9,882	10,095
Sundry Debtors	Unrestricted	1,257	651
		<b>225,310</b>	<b>224,917</b>
<b><u>Liabilities</u></b>			
Sundry Creditors	Unrestricted	869	594

These accounts were approved by

*V Smith-Roe*

**Mrs V Smith-Roe**  
**County Treasurer**

Date:

05/01/2023

*Sarah Myers*

**Ms Sarah Myers**  
**County Commissioner**

Date:

22/01/23

**THE GUIDE ASSOCIATION SHROPSHIRE COUNTY**  
**NOTES TO THE ACCOUNTS 2022**

	<u>Opening Balance</u>	<u>Receipts</u>	<u>Payments</u>	<u>Transfer</u>	<u>Surplus /(deficit) of receipts over payments</u>	<u>Closing Balance</u>
<b><u>Unrestricted Funds</u></b>						
Shropshire Main	127,525	43,119	(60,850 )	4,600	(13,131 )	114,394
Lyneal Activities Centre	28,695	6,752	(3,375 )	(600 )	2,777	31,472
Badge Account	8,348	31,782	(29,058 )	(4,000 )	(1,276 )	7,072
Training Committee	4,724	158	(2,903 )	0	(2,745 )	1,979
	<u>169,292</u>	<u>81,810</u>	<u>(96,186 )</u>	<u>- -</u>	<u>14,375</u>	<u>154,917</u>
<b><u>Restricted Funds</u></b>						
Switzerland 2023 trip	-	3,650	-	-	3,650	3,650
<b><u>Designated Funds</u></b>						
Outdoor Activity Centre Fund	3,893	-	(1,247)	-	(1,247)	2,646
Butler Fund	-	10,000	-	-	10,000	10,000
<b><u>Endowment Fund</u></b>						
Elizabeth Mowat Memorial Fund	5,798	1,315	(390)	-	925	6,722
	<u>178,983</u>	<u>96,775</u>	<u>(97,823)</u>	<u>-</u>	<u>(1,047)</u>	<u>177,935</u>

The Outdoor Activity Centre continues to spend its maintenance fund and will continue to do so over the coming financial year

The Elizabeth Mowat Memorial Fund was set up in February 1979 following the receipt of £1,000. The income arising is to be applied at the absolute discretion of the County Commissioner for charitable purposes connected with the Guide movement in the county of Shropshire.

**THE GUIDE ASSOCIATION SHROPSHIRE**  
**CONSOLIDATED RECEIPTS AND PAYMENTS ACCOUNTS**  
**FOR THE YEAR ENDED 31st JULY 2021**

	Main	Lyneal	Badge	Mowat Swannick	Training	2022 Total	2021 Total
<b>Receipts</b>							
Donations - General	10,002			1,000		11,002	29
Letting fees		3,756				3,756	135
Members subscriptions	23,302					23,302	20,464
Investment income	3,062	326		315		3,703	3,145
Other income	20,265	2,216			20	22,501	3,763
Sale of merchandise	137	454	31,782		138	32,511	19,581
<b>Total receipts</b>	<b>56,768</b>	<b>6,752</b>	<b>31,782</b>	<b>1,315</b>	<b>158</b>	<b>96,775</b>	<b>47,117</b>
<b>Payments</b>							
Direct charitable expenditure	39,343	4,510	28,911	390	2,118	75,272	55,320
Management and administration	21,506	112	147		785	22,550	26,721
						-	
<b>Total payments</b>	<b>60,849</b>	<b>4,622</b>	<b>29,058</b>	<b>390</b>	<b>2,903</b>	<b>97,822</b>	<b>92,923</b>
<b>Inter account Transfers</b>	4,600 -	600 -	4,000	-	-	-	
Surplus / (Deficit) of receipts over payments	519	1,530	(1,276 )	925	(2,745 )	- 1,047	15,086

**Bank & Cash**

	<b>Schedule</b>	<b>Type</b>	<b>2022</b>	<b>2021</b>
CAF Current Account 00015665	Main	Unrestricted	19362	32,553
		Designated	10000	
		Restricted	3650	
CAF Savings Account 00092272	Main	Unrestricted	95032	94,972
Lloyds Current Account 00724365	Lyneal	Unrestricted	10922	5,807
CAF Gold Account 00082024	Lyneal	Unrestricted	20550	2,888
	<i>Lyneal</i>	<i>Designated</i>	2646	3,893
Lloyds Treasurers Account 00115010	Badge	Unrestricted	7021	8,325
Cash in hand	Badge	Unrestricted	50	23
<i>Lloyds Account 01450277</i>	<i>Mowat</i>	<i>Endowment</i>	6722	5,797
Lloyds Business Account 00972834	Training	Unrestricted	1947	4,704
Cash in hand	Training	Unrestricted	33	21
			<hr/>	<hr/>
			177935	158,983
			<hr/>	<hr/>
Check Assets			177935	158,983
Check R&P			177935	178,982

### Investments

	Schedule	Type	2022	2021
Charifund 1876 units	Main	Unrestricted	28,417	28,937
Charifund 409 units	Mowat	Endowment	6,195	6,309
CAF 46.077.0370	Main	Unrestricted	40,488	47,381
CAF 9,215.4080	Lyneal	Unrestricted	8,098	9,476
			<u>83,198</u>	<u>92,103</u>

**Fixed Assets**

	Schedule	2022	2021
Lyneal Centre, Lyneal	Lyneal	190,000	190,000
Solar panels at above	Lyneal	14,171	14,171
Fixtures fittings equip at above	Lyneal	10,000	10,000
		<u>214,171</u>	<u>214,171</u>

**Stock**

	Schedule	2022	2021
Stock of badges	Badge	9,351	9,117
Training & Shop	Training	531	978
		<u>9,882</u>	<u>10,185</u>

**Sundry Debtors**

	<b>Schedule</b>	<b>2022</b>	<b>2021</b>
Badge sales	Badge	1,219	382
Franking Machine	Badge	38	33
Balances with suppliers	Lyneal	-	237
		<u>1,257</u>	<u>652</u>

**Sundry Creditors**

	Schedule	2022	2021
Badge invoices owing	Badge	767	461
Badge customer credits	Badge	102	133
		<u>869</u>	<u>594</u>