

THE GUIDE ASSOCIATION SHROPSHIRE COUNTY

CONSOLIDATED ACCOUNTS

FOR THE YEAR ENDED

31 July 2021

REGISTERED CHARITY NO. 1035091

THE GUIDE ASSOCIATION SHROPSHIRE

MEMBERS REPORT FOR THE YEAR ENDED 31 JULY 2021

Membership of the County Executive Committee comprises:-

Voting Members

Ms Sarah Myers		The County Commissioner
Miss C Coleman		The Assistant County Commissioner
Mrs V Smith-Roe		The County Treasurer
Mrs A Ireland		} The Division Commissioners
Mrs V Smith-Roe		
Mrs Amanda Mitchell		
Ms D Griffiths	Role started 05/01/2021	
Miss R Harding		
Miss A Taylor		
Mrs L Arthan		

Non Voting Members

Mrs M Rayner		Chairman/Trefoil Guild
Mrs B Hodges		} Specialist Advisers
Mrs H Smith	Role ended 02/08/2020	
Mrs C Wassall	Role started 02/02/2020	
Mrs J Price		
Mrs M Wynn		

Charity registered number

1035091

Principal Office

3&4 Conwy House
St Georges Court
St Georges Road
Donnington
Telford
TF2 7BF

Independent Review

WR Partners
Belmont House
Shrewsbury Business Park
Shrewsbury
Shropshire
SY2 6LG

Main Bankers

CAF Bank Ltd
25 King's Hill
King's Hill
West Malling
Kent
ME19 4JQ

**THE GUIDE ASSOCIATION SHROPSHIRE COUNTY
ANNUAL REPORT FOR THE YEAR ENDED 31 JULY 2021**

The County Executive Committee, who act as trustees, in accordance with the bye law 9.2C of the Royal Charter of The Guide Association, shall be responsible for directing the development of the principles and aims of Girlguiding, within the County of Shropshire, in accordance with the current issue of:-

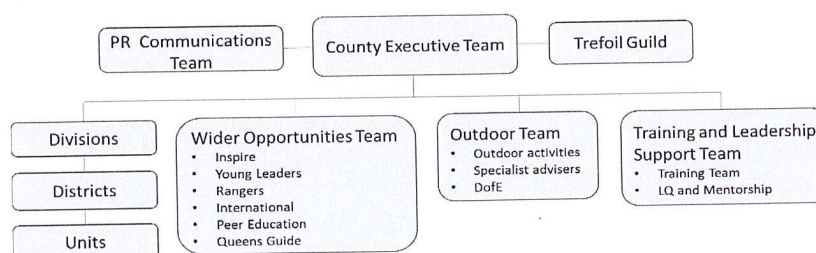
The Royal Charter of Bye Laws
The Guiding Manual
The Handbooks

The Guide Association is an unincorporated charity, constituted under a Royal Charter granted 14 December 1922.

Methods, policies & procedures for the appointment and induction of new trustees

The trustees are the voting members of the Executive Committee. They are the County Commissioner, who is appointed by the Midland Region Commissioner, her Assistant, the County Treasurer and the Division Commissioners all of whom are the appointees of the County Commissioner in consultation with the other trustees. Four meetings are held each year in line with the County Constitution.

The Management structure of Girlguiding Shropshire is as follows. All communications are bi-directional.



Objectives and Activities

The Guide Association is the UK's largest voluntary organisation for girls and young women. Girlguiding Shropshire is set within the Guide Association Midlands Region and is therefore an integral part of the National Association.

Girlguiding UK's vision
An equal world where all girls can make a positive difference, be happy, safe and fulfil their potential.

Girlguiding UK's Mission

Through fun, friendship, challenge and adventure we empower girls to find their voice, inspiring them to discover the best in themselves and to make a positive difference in their community.

Our values are our shared commitment to be: Caring, Challenging, Empowering, Fun, Inclusive and Inspiring.

Achievements and Performance

Girlguiding is the leading charity for girls and young women in the UK. We build girls' confidence and raise their aspirations. We give them the chance to discover their full potential and encourage them to be a powerful force for good. We give them a space to have fun. Girlguiding Shropshire continues to offer our young women fun, exciting activities and the chance to make lifelong friends. You'll find us in many communities, helping to give girls a head start in life and encouraging them to be happy, self-confident and curious about the difference they can make.

As with all youth organisations, the pandemic continued to impact Girlguiding Shropshire activities in the 2020/2021 financial year. The County Committees continued to meet via zoom in order to conduct business in line with our constitution and individual committee's terms of reference. New Commissioner appointments were made in Ludlow, Shrewsbury, Oswestry and Wrekin Divisions as roles expired. New DofE, Young Leader, Ranger and Diversity advisers and lead volunteers were also appointed.

The county plan was reviewed following a virtual planning workshop and activities adjusted to meet the needs of our members. Several face to face events had been rescheduled from 2019/2020 and these were again rescheduled once government guidance enabled them to take place. Adaptions to the national programme have continued to enable virtual delivery within the theme of 'Adventures at home'. Midlands Region have also provided virtual challenge badges including variants on Celebrate at Home and Fascinate, a STEM challenge. Units have continued to adapt to provide online meetings and about 30% of our units continued to meet outdoors and face to face when guidance permitted, subject to full risk assessment.

Within the county we held two virtual STEM workshops for Brownies, in partnership with The STEM Workshop, these were attended by small numbers but delivered by Rangers and was a good pilot for potential future events. We delivered a virtual International event, Go Global which successfully attracted about 100 participants aged 12+ to take part in International themed activities. Midsummer Magic, a virtual sleepover and activity weekend, was delivered through video on our YouTube channel and Facebook pages (supported by self help guides) badges were available to those who took part. The Shropshire Way Challenge continued with c.600 miles walked by our members. We also successfully planned a Water Activity Taster Day across 3 sites which we were able to hold in early Sept 2021 - 200 members attended and completed various activities to inspire units to take to the water. We also developed a County Day in partnership with the National Trust at Attingham Park which ran in September 2021, including a recruitment campaign.

Recognising the commitment and achievement of our volunteers is always very important and in 2020 we delivered 3 virtual celebration events. 'Raise a glass' was an evening event with the opportunity for volunteer recipients of long service and county awards to celebrate together with the county team. We also held an afternoon virtual celebration for our young members who received Gold Awards during the pandemic in 2020.

The County Commissioners Challenge was launched in June 2020 to encourage units to invite the County Commissioner Team to visit meets and take part in activities, this aims to encourage units to find ways to meet, get back to guiding and enjoying a variety of Girlguiding activities. We aim to visit all 190 units by 31/12/2022 - early adoption has been good.

The Growth and Retention Task and Finish Group continued with representatives from each Division and developed a Growth and Retention challenge badge. They also developed an activity guide to support a partnership with the National Trust site at Cardingmill Valley. The full impact of the pandemic on 2021 annual subscriptions was a c.30% decrease in overall membership, at the time of writing this report the levels are showing early signs of a recovery.

THE GUIDE ASSOCIATION SHROPSHIRE COUNTY
FINANCIAL REPORT FOR THE YEAR ENDED 31 JULY 2021

Financial Review

The year started with still being in the lockdown for the coronavirus pandemic and uncertainty as to how Girlguiding UK would move to a roadmap out. This meant we continued to only support our members virtually. We did however continue to maintain and improve our activity centre Lyneal by spending the designated funds on an ongoing schedule of maintenance work.

We continued to have meetings via Zoom for the Finance Committee, Risk & Governance Committee, the Awards Committee and of course the County Executive. I see these as positive ways to ensure financial information is communicated in a clear and consistent manner.

Reserves Policy

The trustees have agreed to maintain a policy of 3 years worth of rent and service charge payments for the county office which equates to approximately £52,000 and will be reviewed at every financial year end

The bank balances at the year end continue to be in excess of this policy and we expect to spend funds in line with new policy in future financial periods

Free reserves at the year end were £169,292 which are a representation of the charity's unrestricted funds (2020: £176,392)

Public Benefit

In planning our activities for the year the trustees have had due regard for the Charity Commission's guidance on public benefit. In fulfilling the aim of Guiding, being the development of girls and young women, the Charity has organised activities and supported leaders in running events physically and virtually. Girlguiding Shropshire continues to support the national Girlguiding programme by continuing to train its members free of charge

On behalf of the County Executive Committee



.....
Mrs Victoria Smith-Roe
County Treasurer

Date:

21/04/2022
.....

INDEPENDENT EXAMINER'S REPORT
TO THE TRUSTEES OF THE GUIDE ASSOCIATION SHROPSHIRE

I report to the charity trustees on my examination of the accounts of the charity for the period ended 31 July 2021 which are set out on pages 5 to 7.

Responsibilities and basis of report

As the charity's trustees you are responsible for the preparation of the accounts in accordance with the requirements of the Charities Act 2011 ('the Act').

I report in respect of my examination of the charity's accounts carried out under section 145 of the Act and in carrying out my examination I have followed all the applicable Directions given by the Charity Commission under section 145(5)(b) of the Act.

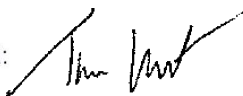
Independent examiner's statement

I have completed my examination. I confirm that no material matters have come to my attention in connection with the examination giving me cause to believe that in any material respect:

1. accounting records were not kept in respect of the charity as required by section 130 of the Act; or
2. the accounts do not accord with those records.

I have no concerns and have come across no other matters in connection with the examination to which

Signed:



Dated: 13/05/2022

Tim Lunt BA FCCA MIRPM

WR Partners
Chartered Accountants
Belmont House
Shrewsbury Business Park
Shrewsbury
Shropshire
SY2 6LG

THE GUIDE ASSOCIATION SHROPSHIRE COUNTY
RECEIPTS AND PAYMENTS ACCOUNT
FOR THE YEAR ENDED 31 JULY 2021

	Unrestricted	Restricted	Designated	Endowment	2021 Total	2020 Total
Receipts						
Donations & Grants	29	-	-	-	29	2,267
Letting fees	135	-	-	-	135	2,909
Members subscriptions	20,464	-	-	-	20,464	30,984
Investment income	2,871	-	-	274	3,145	3,902
Other income	3,763	-	-	-	3,763	26,338
Sale of badges	19,581	-	-	-	19,581	30,727
Total receipts	<u>46,843</u>	<u>-</u>	<u>-</u>	<u>274</u>	<u>47,117</u>	<u>97,127</u>
Payments						
Direct charitable expenditure	33,285	-	9,262	-	42,547	55,320
Management and administration	20,658	-	-	-	20,658	26,721
Total payments	<u>53,943</u>	<u>-</u>	<u>9,262</u>	<u>-</u>	<u>63,205</u>	<u>82,042</u>
Surplus / (Deficit) of receipts over payments	(7,100)	-	(9,262)	274	(16,088)	15,085
Net Movement in funds	(7,100)	-	(9,262)	274		
Bank and cash balances at 1st August 2020	176,392	-	13,155	5,523	195,070	179,985
Bank and cash balances at 31st July 2021	<u>169,292</u>	<u>-</u>	<u>3,893</u>	<u>5,797</u>	<u>178,982</u>	<u>195,070</u>

THE GUIDE ASSOCIATION SHROPSHIRE COUNTY
STATEMENT OF ASSETS AND LIABILITIES
AS AT 31 JULY 2021

	Type	2021	2020
<u>Cash Funds</u>			
Bank and cash balances	Unrestricted	169,292	176,392
Bank and cash balances	Designated	3,893	13,155
Bank and cash balances	Endowment	5,797	5,523
Total cash funds		178,982	195,070
<u>Investment Assets</u>			
Charifund 1,876 units	Unrestricted	28,937	23,404
Charifund 409 units	Endowment	6,309	5,103
CAF Income Account	Unrestricted	47,381	47,584
CAF Investments	Unrestricted	9,476	9,517
		92,103	85,608
<u>Assets retained for the charity's own use</u>			
Freehold property Lyneal Centre, Lyneal	Unrestricted	204,171	204,171
Fixtures, fittings and equipment Lyneal Centre	Unrestricted	10,000	10,000
Badges & Office Stocks	Unrestricted	10,095	10,185
Sundry Debtors	Unrestricted	651	1,551
		224,917	225,907
<u>Liabilities</u>			
Sundry Creditors	Unrestricted	594	1,733

These accounts were approved by

M. Roe

Mrs V Smith-Roe
County Treasurer

Date: 21/04/2022

S. Myers
21/5/22

Ms Sarah Myers
County Commissioner

Date:

THE GUIDE ASSOCIATION SHROPSHIRE COUNTY
NOTES TO THE ACCOUNTS 2021

	<u>Opening Balance</u>	<u>Receipts</u>	<u>Payments</u>	<u>Transfer</u>	<u>Surplus /(deficit) of receipts over payments</u>	<u>Closing Balance</u>
<u>Unrestricted Funds</u>						
Shropshire Main	132,448	25,381	(30,903)	600	(4,923)	127,525
Lyneal Activities Centre	30,980	1,886	(3,571)	(600)	(2,285)	28,694
Badge Account	7,639	19,572	(18,863)	0	709	8,348
Training Committee	5,325	4	(606)	0	(602)	4,724
	<u>176,392</u>	<u>46,842</u>	<u>(53,943)</u>	<u>- -</u>	<u>7,101</u>	<u>169,291</u>
<u>Designated Funds</u>						
Outdoor Activity Centre Fund	13,155	-	(9,262)	-	(9,262)	3,893
<u>Endowment Fund</u>						
Elizabeth Mowat Memorial Fund	5,524	274	-	-	274	5,797
	<u>195,070</u>	<u>47,116</u>	<u>(63,206)</u>	<u>-</u>	<u>(16,089)</u>	<u>178,982</u>

The Outdoor Activity Centre continues to spend its maintenance fund and will continue to do so over the coming financial year

The Elizabeth Mowat Memorial Fund was set up in February 1979 following the receipt of £1,000. The income arising is to be applied at the absolute discretion of the County Commissioner for charitable purposes connected with the Guide movement in the county of Shropshire.