

THE GUIDE ASSOCIATION - SHROPSHIRE COUNTY

England & Wales · Charity number 1035091

Details

Other names	SHROPSHIRE COUNTY GIRL GUIDES, GIRLGUIDING SHROPSHIRE, THE GUIDE ASSOCIATION SHROPSHIRE
Status	Registered
Legal form	Other
Registered	1994-03-15
Register	View on the Charity Commission register

Contact

Address	Suites 3 & 4 Conwy House St Georges Court St Georges Road Donnington Shropshire TF2 7BF
Phone	01952615325
Email	countycommissioner@girlguidingshropshire.org.uk
Website	www.girlguidingshropshire.org.uk

Activities

Objects: THE INSTRUCTION OF GIRLS OF ALL CLASSES IN THE PRINCIPLES OF DISCIPLINE LOYALTY AND GOOD CITIZENSHIP

Activities: Girlguiding Shropshire is within Girlguiding Midlands Region and part of the national Girlguiding organisation. Girlguiding Shropshire enables girls and young women to develop their potential so that they can make a positive contribution to their community and the wider world, through a self planned programme of activities and challenges, guided by trained adult volunteers.

Classification

- **How:** Provides Human Resources, Provides Services
- **What:** Education/training, Environment/conservation/heritage, Recreation
- **Who:** Children/young People, The General Public/mankind

Geography

- Shropshire
- Telford & Wrekin

Finances

Period end	Income	Expenditure	Assets	Employees
2025-07-31	£85,919	£95,727	-	-
2024-07-31	£178,785	£225,828	-	-
2023-07-31	£133,222	£91,404	-	-
2022-07-31	£96,775	£97,822	-	-
2021-07-31	£47,117	£63,205	-	-
2020-07-31	£97,127	£82,042	-	-

Trustees

Name	Role	Appointed
Claire Turner		2025-09-22
Drew Marrs		2026-03-12
ELIZABETH BEDDOES		2025-11-01
Jane Hurst		2022-12-09
Jayne Malcolm		2026-02-28
Lisa Mitchell		2025-10-04
Pamela Carol Nockles		2022-12-09
Sarah Brammer		2025-11-02
Sarah Smith-Roe		2025-07-17
Victoria Smith-Roe		2015-04-01

THE GUIDE ASSOCIATION - SHROPSHIRE COUNTY

England & Wales - Charity number 1035091

Accounts

THE GUIDE ASSOCIATION SHROPSHIRE COUNTY

CONSOLIDATED ACCOUNTS

FOR THE YEAR ENDED

31 July 2025

REGISTERED CHARITY NO. 1035091

THE GUIDE ASSOCIATION SHROPSHIRE COUNTY
MEMBERS REPORT FOR THE YEAR ENDED 31 JULY 2025

Membership of the County Executive Committee comprises:-

Voting Members

Ms Sarah Myers	Role ended 31.08.24	The County Commissioner
Miss J Hurst	Role began 01.09.24	The County Commissioner
Miss C Coleman	Role ended 31.08.24	The Assistant County Commissioner
Mrs S Smith-Roe	Role began 17.07.25	The Assistant County Commissioner
Mrs V Smith-Roe		The County Treasurer
Miss J Hurst	Role ended 31.08.24	} The Division Commissioners
Mrs L Mitchell	Role ended 01.10.24	
Mrs N Fancett		
Miss R Harding	Role ended 28.02.25	
Mrs A McLaughlin (nee Taylor)	Role ended 02.07.25	
Miss A Gray	Role ended 31.05.25	
Mrs D Griffiths		
Mrs C Nockles	Role began 01.09.24	

Non Voting Members

Mrs M Rayner	} Chairman/Trefoil Guild Specialist Advisers
Mrs S Smith-Roe	
Mrs M Wynn	

Charity registered number

1035091

Principal Office

3&4 Conwy House
 St Georges Court
 St Georges Road
 Donnington
 Telford
 TF2 7BF

Independent Review

WR Partners
 Belmont House
 Shrewsbury Business Park
 Shrewsbury
 Shropshire
 SY2 6LG

Main Bankers

CAF Bank Ltd
 25 King's Hill
 King's Hill
 West Malling
 Kent
 ME19 4JQ

THE GUIDE ASSOCIATION SHROPSHIRE COUNTY
ANNUAL REPORT FOR THE YEAR ENDED 31 JULY 2025

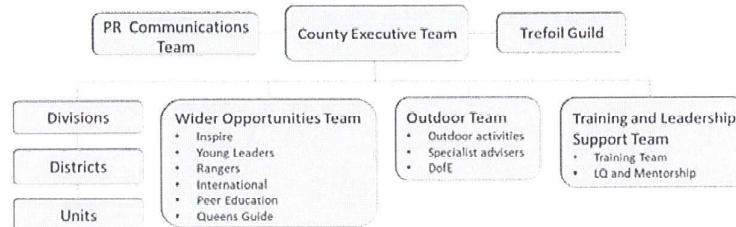
The County Executive Committee, who act as trustees, in accordance with the bye law 9.2C of the Royal Charter of The Guide Association, shall be responsible for directing the development of the principles and aims of Girlguiding, within the County of Shropshire, in accordance with the current issue of:-

- The Royal Charter of Bye Laws
- The Guiding Manual
- The Handbooks

The Guide Association is an unincorporated charity, constituted under a Royal Charter granted 14 December

Methods, policies & procedures for the appointment and induction of new trustees

The trustees are the voting members of the Executive Committee. They are the County Commissioner, who is appointed by the Midland Region Commissioner, her Assistant, the County Treasurer and the Division Commissioners all of whom are the appointees of the County Commissioner in consultation with the other. The Management structure of Girlguiding Shropshire is as follows. All communications are bi-directional.



Objective and activities

Girlguiding UK is the UK's largest voluntary organisation for girls and young women. Girlguiding Shropshire is set within Girlguiding Midlands Region and is therefore an integral part of the National Association.

Girlguiding UK's strategy - Girls can do anything

Girlguiding exists to help girls and young women find their voice, and build skills and confidence – inspiring them to discover the best in themselves and empower them to make a positive difference in their community.

Goals

- Exceptional experiences for girls
- Rewarding volunteer experience
- Impactful and inclusive
- Getting the basics right

Our Achievements and Performance for the period ending 31st July 2025

Exceptional experiences for girls

In 2024/2025 there were plans made for another county camp in 2027, building on the great success of Element camp in the summer of 2024. We are hoping to use the same campsite at Chetwynd Deer Park near The year has been spent organising a Brownie camp, to be called Sparkle, and to be held at Patshull Park Activity Centre at the end of August 2025. The Adventure team are hoping to build on the enthusiasm of the Elements camp and encourage volunteers to take their Brownie units camping or on residential events. We were very kindly donated some funding and the executive committee agreed to utilise some of the money to launching the new Young Leader development programme. We recruited a new Young Leader lead volunteer and set about designing and ordering plastic wallet folders with a notebook and county pen. Included in the pack is a postcard of the 12 elements of the programme and a Queen's Guide award booklet. Each Young Leader registering for the programme will be given a pack to keep their evidence for the Several units from the county attended the region led Magical Midlands event at Uttoxeter racecourse on 12th July 2025. They had a fantastic time with lots of fun activities and were entertained at the end of the event by an ABBA and Taylor Swift tribute acts. The feedback was very positive despite it being one of the hottest

Rewarding volunteer experience

Training

The September training week, in which a separate session is held in each of the seven divisions, was based on Skills builder and Unit meeting activities which the volunteers could use in their units. This was well attended in each division and a chance to socialise with fellow volunteers. The 2025 county day was held in Bayston Hill on the 5th of April and the Training team put together a selection of activities. There was also a presentation from The training team has continued to deliver mandatory training which supports the Learning and Development Platform (LDP). Safer Guiding has replaced Safe Space training and is now available on the LDP, the team are looking to deliver a face-to-face format, in the future, for those who are unable to complete in this way. First Our Training team lead has changed so we look forward to working with her. Leaders in training continue to benefit from the focus of our Leaders in Training co-ordinator and the mentor team.

Awards

In 2024/2025 we were delighted that one of our members received a Laurel award. We held an afternoon tea party to celebrate her receiving her award which was presented by the Region Chief. Her good friend, with whom she had attended the local guide unit, surprised her by travelling from the other side of the Midlands to We were pleased that 3 of our members were recognised with Midland Region Chief Commissioner Awards which were presented at Sandon Hall followed by an afternoon tea. 37 Long service awards were awarded in the reporting period including 2 50-year and 3 40-year awards. It is fantastic to be able to celebrate their dedication to Girlguiding.

International

Girlguiding Shropshire members attended the international selection event at Midlands Region, where volunteers and girls were selected to participate in trips to the Azores and Tanzania.

Inclusive and impactful

PR

Membership numbers remain steady this year. We have a county gazebo and feather flags with the new branding available for loan. Banners or pull up displays have been obtained for divisions according to their requests. We have worked with the Growth and Retention Team to produce some locally focused material

Brilliant Basics

Financial Governance

Half of the Postcode Lottery match fund grant was used to support subscriptions with the rest to be used for the following year. The grant from the Lord Leverhulme's Charitable Trust continues to be used to support our work. Currently we have made improvements to our headquarters, our residential property Lyneal, the Young The Finance Committee and our Treasurer have worked diligently to reduce our expenditure. Previously we have produced a handbook which was revised annually but it was decided, in conjunction with the executive committee, that the cost of production and postage was no longer viable and as the information quickly requires The finance committee received a donation from a vice president which she wished to be used toward international travel. Several grants have been awarded to girls participating in international trips, contributing

Risk Governance

The Risk committee didn't meet during the reporting period due to lack of members; we are working on recruitment of members to the committee and hope to hold a meeting to review the risk register as soon as

Admin

Our county administrator has stepped back from the role, and we are looking to recruit a replacement. This would help the Training Team to tailor course requirements to county needs and aid our compliance.

County Headquarters

Girlguiding Shropshire county headquarters is based in Telford and Wrekin council premises and the County Executive committee agreed to renew the lease on the property. Improvements have been made to our suite

Lyneal Activity Centre

Lyneal usage increases year on year, proving to be popular with Guiding and Scouting units and regular day time bookings. The Executive committee monitors the management of the property, led by the Lyneal lead volunteer. Improvements and maintenance continue to be made with help from working parties made of volunteers with major works being undertaken by trade people. Grants have been obtained where possible with Many thanks go to our volunteers for helping, our Lyneal lead volunteer and county treasurer for ensuring our activity centre is well maintained and an amazing asset for the county members.

Trustees

In this financial year to July 2025, a volunteer for the role of assistant county commissioner has been found and therefore will become a trustee. She will be working hard to recruit some division commissioners, who will also

THE GUIDE ASSOCIATION SHROPSHIRE COUNTY
FINANCIAL REPORT FOR THE YEAR ENDED 31 JULY 2025

Financial Review

This year we have continued to look at our expenditure and reduce where possible given the slowly decreasing number of members which impacts our subscriptions income. We have been lucky to have received some donations and grants which we have used to subsidise the costs to our members

Reserves Policy

The trustees have agreed to maintain a policy of 3 years worth of rent and service charge payments for the county office which equates to approximately £52,000 and will be reviewed at every financial year end

The bank balances at the year end continue to be in excess of this policy and we expect to spend funds in line with this policy in future financial periods

Free reserves at the year end were £139,183 which are a representation of the charity's unrestricted funds (2024 were £139,530)

Public Benefit

In planning our activities for the year the trustees have had due regard for the Charity Commission's guidance on public benefit. In fulfilling the aim of Guiding, being the development of girls and young women, the Charity has organised activities and supported leaders in running events physically and virtually. Girlguiding Shropshire continues to support the national Girlguiding programme by continuing to train it's members free of charge

On behalf of the County Executive Committee



.....
Mrs Victoria Smith-Roe
County Treasurer

Date: 30/03/2026
.....

INDEPENDENT EXAMINER'S REPORT

TO THE TRUSTEES OF THE GUIDE ASSOCIATION SHROPSHIRE

Independent Examiner's Report

I report to the charity trustees on my examination of the accounts of the charity for the period ended 31 July 2025 which are set out on pages 5 to 7.

Responsibilities and basis of report

As the charity's trustees you are responsible for the preparation of the accounts in accordance with the requirements of the Charities Act 2011 ('the Act').

I report in respect of my examination of the charity's accounts carried out under section 145 of the Act and in carrying out my examination I have followed all the applicable Directions given by the Charity Commission under section 145(5)(b) of the Act.

Independent examiner's statement

I have completed my examination. I confirm that no material matters have come to my attention in connection with the examination giving me cause to believe that in any material respect:

1. accounting records were not kept in respect of the charity as required by section 130 of the Act; or
2. the accounts do not accord with those records.

I have no concerns and have come across no other matters in connection with the examination to which attention should be drawn in this report in order to enable a proper understanding of the accounts to be reached.

Signed: *Tim Lunt*

Dated: 13/05/2026

Tim Lunt BA (Hons) FCCA MTPI

WR Partners
Chartered Accountants
Belmont House
Shrewsbury Business Park
Shrewsbury
Shropshire
SY2 6LG

THE GUIDE ASSOCIATION SHROPSHIRE COUNTY
RECEIPTS AND PAYMENTS ACCOUNT
FOR THE YEAR ENDED 31 JULY 2025

	Unrestricted	Restricted	Designated	Endowment	2025 Total	2024 Total
Receipts						
Donations & Grants	200	1,500	10,000	-	11,700	25,000
Letting fees	8,255	-	-	-	8,255	6,777
Members subscriptions	23,778	-	-	-	23,778	22,725
Investment income	2,846	-	-	372	3,218	34,917
Other income	12,003	3,559	-	-	15,562	66,990
Sale of badges	23,406	-	-	-	23,406	22,376
Total receipts	70,488	5,059	10,000	372	85,919	178,785
Payments						
Direct charitable expenditure	66,519	21,214	3,676	-	91,409	221,572
Management and administration	4,318	-	-	-	4,318	4,256
	-	-	-	-	-	-
Total payments	70,837	21,214	3,676	-	95,727	225,828
Surplus / (Deficit) of receipts over payments	(349)	(16,155)	6,324	372	(9,808)	(47,043)
Net Movement in funds	(349)	(16,155)	6,324	372	(9,808)	(47,043)
Bank and cash balances at 1st August 2024	139,532	18,359	7,925	6,894	172,710	219,753
Bank and cash balances at 31st July 2025	139,183	2,205	14,249	7,267	162,904	172,709

THE GUIDE ASSOCIATION SHROPSHIRE COUNTY
STATEMENT OF ASSETS AND LIABILITIES
AS AT 31 JULY 2025

	Type	2025	2024
<u>Cash Funds</u>			
Bank and cash balances	Unrestricted	139,183	139,530
Bank and cash balances	Designated	14,249	7,925
Bank and cash balances	Restricted	2,205	18,359
Bank and cash balances	Endowment	7,267	6,895
Total cash funds		162,904	172,710
<u>Investment Assets</u>			
Charifund 1,876 units	Unrestricted		
Charifund 409 units	Endowment	6,433	6,204
Quilter Investments	Unrestricted	105,898	102,235
		112,331	108,439
<u>Assets retained for the charity's own use</u>			
Freehold property Lyneal Centre, Lyneal	Unrestricted	204,171	204,171
Fixtures, fittings and equipment Lyneal Centre	Unrestricted	10,000	10,000
Badges & Office Stocks	Unrestricted	6,342	7,592
Sundry Debtors	Unrestricted	818	872
		221,331	222,635
<u>Liabilities</u>			
Sundry Creditors	Unrestricted	1,518	1,206

These accounts were approved by



Mrs V Smith-Roe
County Treasurer

Date: 30/03/2026



Miss Jane Hurst
County Commissioner

Date: 8/4/2026

THE GUIDE ASSOCIATION SHROPSHIRE COUNTY
NOTES TO THE ACCOUNTS 2025

	<u>Opening Balance</u>	<u>Receipts</u>	<u>Payments</u>	<u>Transfer</u>	<u>Surplus /(deficit) of receipts over payments</u>	<u>Closing Balance</u>
<u>Unrestricted Funds</u>						
Shropshire Main	100,290	36,931	(41,153)	2,600	(1,621)	98,669
Lyneal Activities Centre	34,020	10,416	(9,517)	(600)	299	34,319
Badge Account	4,649	23,141	(18,902)	(3,000)	1,239	5,888
Training Committee	573		(1,267)	1,000	(267)	306
	<u>139,532</u>	<u>70,488</u>	<u>(70,837)</u>	<u>-</u>	<u>(350)</u>	<u>139,183</u>
<u>Restricted Funds</u>						
County Camp 2024	18,359	3,559	(19,714)		(16,155)	2,205
Tesco Grant (Lyneal)		1,500	(1,500)		-	-
<u>Designated Funds</u>						
Rutler Fund	7,925		(316)	-	(316)	7,609
Leverhulme Fund		10,000	(3,360)		6,640	6,640
<u>Endowment Fund</u>						
Elizabeth Mowat Memorial Fund	6,894	372		-	372	7,267
	<u>172,710</u>	<u>85,919</u>	<u>(95,727)</u>	<u>-</u>	<u>(9,810)</u>	<u>162,904</u>

The County Camp made a slight profit which we have ringfenced for the next county event
The Leverhulme trust gave us general funding for running our charity

The Elizabeth Mowat Memorial Fund was set up in February 1979 following the receipt of £1,000. The income arising is to be applied at the absolute discretion of the County Commissioner for charitable purposes connected with the Guide movement in the county of Shropshire.
Some grants have been made this year

THE GUIDE ASSOCIATION SHROPSHIRE COUNTY
CONSOLIDATED RECEIPTS AND PAYMENTS ACCOUNTS
FOR THE YEAR ENDED 31st JULY 2025

	Main	Lyneal	Badge	Mowat Swannick	Training	2025 Total	2024 Total
Receipts							
Donations	10,200	1,500				11,700	25,000
Letting fees	42	8,213				8,255	6,777
Members subscriptions	23,778					23,778	22,725
Investment income	2,351	495		372		3,218	34,917
Other income	14,066	1,496				15,562	66,990
Sale of merchandise	53	212	23,141			23,406	22,376
Total receipts	50,490	11,916	23,141	372	-	85,919	178,784
Payments							
Direct charitable expenditure	60,525	10,908	18,709		1,267	91,409	221,572
Management and administration	4,017	108	193			4,318	4,256
Total payments	64,542	11,016	18,902	-	1,267	95,727	225,828
Inter accs transfers eliminate	2,600	(600)	(3,000)	-	1,000		
Surplus / (Deficit) of receipts over payments	(11,452)	300	1,239	372	(267)	(9,000)	(47,044)

Bank & Cash

	Schedule	Type	2025	2024
CAF Current Account 00015665	Main	Unrestricted	21,653.20	13,416.51
CAF Savings Account 00092272	Main	Unrestricted	77,016.15	86,872.63
<i>Decision to move more funds to the savings</i>	<i>Main</i>	<i>Designated</i>	<i>14,248.98</i>	<i>7,925.00</i>
	<i>Main</i>	<i>Restricted</i>	<i>2,204.82</i>	<i>18,359.48</i>
Lloyds Current Account 00724365	Lyneal	Unrestricted	11,914.09	11,509.66
CAF Gold Account 00082024	Lyneal	Unrestricted	22,405.32	22,509.87
Lloyds Treasurers Account 00115010	Badge	Unrestricted	5,842.57	4,234.11
Cash in hand	Badge	Unrestricted	45.51	414.63
<i>Lloyds Account 01150277</i>	<i>Mowat</i>	<i>Endowment</i>	<i>7,266.57</i>	<i>6,894.37</i>
Lloyds Business Account 00972834	Training	Unrestricted	305.76	572.37
Cash in hand	Training	Unrestricted	0.64	0.64
			162,904	172,709

Investments

	Schedule	Type	2025	2024
Charifund 409 units	Mowat	Endowment	6,433	6,204
Quilter	Main	Unrestricted	105,898	102,235
			-	-
			<u>112,331</u>	<u>108,439</u>

Fixed Assets

	Schedule	2025	2024
Lyneal Centre, Lyneal	Lyneal	190,000	190,000
Solar panels at above	Lyneal	14,171	14,171
Fixtures fittings equip at above	Lyneal	10,000	10,000
		<u>214,171</u>	<u>214,171</u>

Stock

	Schedule	2025	2024
Stock of badges	Badge	6,342	7,592
		<u>6,342</u>	<u>7,592</u>

Sundry Debtors

	Schedule	2025	2024
Badge sales	Badge	708	753
Franking Machine	Badge	111	119
		<u>818</u>	<u>872</u>

Sundry Creditors

	Schedule	2025	2024
Badge invoices owing	Badge	1,436	1,050
Badge customer credits	Badge	82	156
		<u>1,518</u>	<u>1,206</u>

THE GUIDE ASSOCIATION - SHROPSHIRE COUNTY

England & Wales - Charity number 1035091

Accounts

THE GUIDE ASSOCIATION SHROPSHIRE COUNTY

CONSOLIDATED ACCOUNTS

FOR THE YEAR ENDED

31 July 2024

REGISTERED CHARITY NO. 1035091

THE GUIDE ASSOCIATION SHROPSHIRE COUNTY

MEMBERS REPORT FOR THE YEAR ENDED 31 JULY 2023

Membership of the County Executive Committee comprises:-

Voting Members

Ms Sarah Myers	The County Commissioner
Miss C Coleman	The Assistant County Commissioner
Mrs V Smith-Roe	The County Treasurer
Miss J Hurst	} The Division Commissioners
Mrs L Mitchell	
Mrs N Fancett	
Miss R Harding	
Miss A Taylor	
Miss A Gray	
Mrs D Griffiths	

Non Voting Members

Mrs M Rayner	} Chairman/Trefoil Guild	
Mrs S Smith-Roe		} Specialist Advisers
Mrs M Wynn		
Mrs C Nockles		} Joint Division Commissioner - Ludlow

Charity registered number

1035091

Principal Office

3&4 Conwy House
St Georges Court
St Georges Road
Donnington
Telford
TF2 7BF

Independent Review

WR Partners
Belmont House
Shrewsbury Business Park
Shrewsbury
Shropshire
SY2 6LG

Main Bankers

CAF Bank Ltd
25 King's Hill
King's Hill
West Malling
Kent
ME19 4JQ

THE GUIDE ASSOCIATION SHROPSHIRE COUNTY
ANNUAL REPORT FOR THE YEAR ENDED 31 JULY 2024

The County Executive Committee, who act as trustees, in accordance with the bye law 9.2C of the Royal Charter of The Guide Association, shall be responsible for directing the development of the principles and aims of Girlguiding, within the County of Shropshire, in accordance with the current issue of:-

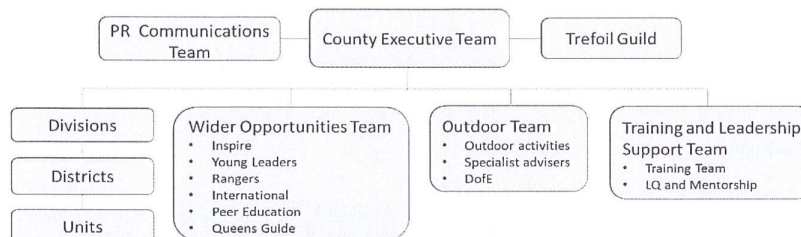
- The Royal Charter of Bye Laws
- The Guiding Manual
- The Handbooks

The Guide Association is an unincorporated charity, constituted under a Royal Charter granted 14 December 1922.

Methods, policies & procedures for the appointment and induction of new trustees

The trustees are the voting members of the Executive Committee. They are the County Commissioner, who is appointed by the Midland Region Commissioner, her Assistant, the County Treasurer and the Division Commissioners all of whom are the appointees of the County Commissioner in consultation with the other trustees. Four meetings are held each year in line with the County Constitution.

The Management structure of Girlguiding Shropshire is as follows. All communications are bi-directional.



Objectives and Activities

Girlguiding UK is the UK's largest voluntary organisation for girls and young women. Girlguiding Shropshire is set within Girlguiding Midlands Region and is therefore an integral part of the National Association.

Girlguiding UK's strategy - Today, tomorrow, together

Girlguiding exists to help girls and young women find their voice, and build skills and confidence – inspiring them to discover the best in themselves and empower them to make a positive difference in their community. We help girls know they can do anything.

Goals

- Exceptional experiences for girls
- Rewarding volunteer experience
- Impactful and inclusive
- Getting the basics right

Achievements and Performance

Exceptional experiences for girls

In 2023/24 we planned to hold 3 girl events, concluding with a large-scale county camp to celebrate Girlguiding in Shropshire and to mark the end of the incumbent County commissioner role and appointment of our new County commissioner designate.

The year began with our Fantastic Festivities event in Church Stretton, a world celebration sleepover for Rangers and Young Leaders and older Guides aged 14+. The 28 participants took part in an Indian cooking class, world fusion dancing, crafts from around the world and a midnight walk. We also had talks from the 2023 International participants to encourage young members to seek opportunities for 2025. Attendance was improved on last year's Let loose in Ludlow event with c. 30% of our Ranger/Young Leader membership attending (increase of 10% from the previous year). This format is growing successfully and would be a positive inclusion in the 2025 programme to continue to build engagement.

In 2023, we had designed an all-section day event called GOALS (Get Out And Learn Skills) with a county football club, unfortunately it wasn't possible to run the event and as such we planned to collaborate with a different provider and hold this event in 2024. Despite positive discussions, we were unable to make the event viable and due to a combination of cost and take up the event was cancelled. Instead, we partnered with a local company to supply a 'football fun' skills session at our county camp which was a successful part of the programme.

The Elements County Camp was held at Chetwynd Deer Park in July, the first county camp for over 5 years. The camp was planned over a 12-month period and ran for 5 days and 4 nights and included a full residential programme for Brownie, Guide and Ranger sections and a visitors day programme for Rainbows and Brownies. In total 750 members took part with 350 adults and young members camping throughout. The subcamps were based on the elements, fire, water, earth and air and we were delighted to have a Brownie subcamp with 50 participants staying under canvas, many for their first Brownie camping experience.

Activities included canoeing, coracling, climbing, swimming, water slides, Rotary Aquabox, football, escape room tents, Traditional camping skills, a variety of crafts and skills-based activities, chill out zone, musical theatre, forest bathing, wellbeing and storytelling, parades, campfires, silent disco and cinema and a camp wide game. A new county song book was launched and hopefully this resource will grow over time. The camp shop and the café were also well visited, and we celebrated the achievement of a Queen's Guide Award, camp birthdays and long service awards. Thanks to our volunteers, suppliers and the Deer Park staff for their hard work and support which ensured the event was well received by all.

The Shropshire Circles Challenge badge was launched in 2022 incorporating 8 topics: Sing, Travel, Explore, Play, Learn, Create, Cook and Share. This concluded in 2024 with c.500 participants having taken part. A new challenge has been designed for 2024/25 which encourages members to learn more about our Shropshire county, try new skills and visit locations to have adventures with their unit.

We were delighted that 7 of our 14-24 aged young members completed their Peer Education training. This is a big boost for young members in the county, enabling the Peer Educators to visit units and events in the county to deliver wellbeing topics and activities to support young member welfare.

Rewarding volunteer experience

Training

The September division training week was tailored to best practice requests from each of the divisions ranging from Go training to risk assessments and SEN awareness. The 2024 annual county day was held in Bayston Hill on the 20th of April with a selection of activities for volunteers to take back to their units to supplement the programme, the event was well attended.

Throughout the year the training team has continued to deliver mandated training in support of the webinars available on the new Learning and Development Platform. Additionally, face to face modules to support the completion of the leadership qualification, first response and safe space trainings. In total 19 training events have been delivered in the year. We also thanked 3 of our long-standing trainers who have retired in the past 12 months. Leaders in training have continued to benefit greatly from the focus of our county lead volunteer and the mentor group is building experience in the new qualification and supporting volunteers with the Leadership Development Platform as new courses and functionality are delivered.

Crafty Carols

In November 2023, we held a fun afternoon in Shrewsbury with an opportunity to learn some new Christmas crafts and sing carols, a lovely end to the year.

Awards

In 2023/24 we awarded 34 long service awards including 6, 40-year awards. 19 volunteers gained their leadership qualification, and 1 Young Leader gained their qualification. In December 2023, 2 members were recognised with Midlands Region Chief Commissioner Awards. Over this 12-month period we have celebrated 4 members attaining their Queens Guide Award, which is an amazing achievement, 1 member completing her award in six months. Their determination and dedication to achieve this challenging award is commendable.

International

Girlguiding Shropshire participants attended the International selection event at Midlands Region, where 2 volunteers and 4 young members were successfully offered the opportunity to take part in International trips in 2024 including Edinburgh ICE and Tanzania. Another volunteer was also selected to be part of a GOLD (Guiding Overseas Linked with Development) group in Jamaica This is a brilliant outcome to promote international opportunities within our membership.

Inclusive and impactful

PR

Membership numbers have remained steady this year. Volunteer recruitment has continued to be a priority with activity being more localised than the previous year. Additional PR material has been acquired and is available for loan as a result of the national rebranding activity.

Brilliant basics

Financial Governance

The Executive Committee agreed to maintain 2024 subscriptions levy for a 4th year to support units in the cost-of-living crisis. The committee agreed a slight increase for 2025 of 30p per member reflecting the increase in running costs due to inflation.

Girlguiding Shropshire was fortunate in receiving a Postcode Lottery match fund grant in 2024 and a grant from Lord Leverhulme's Charitable Trust to support the running costs of Girlguiding in the county which will be a considerable boost to keep the costs of events at an affordable level for members.

Led by the Finance Committee, the Executive Committee undertook a review of financial investments with independent advisers Croft and Oakes. The review resulted in a change of investment approach, with an emphasis on ethical investment. The Executive Committee agreed to retain Croft and Oakes to perform a 12-month review in 2025.

The Finance committee has received a small number of nominations during the year for grants from the 'Girls Have Adventures' legacies to support young members to attend large scale events and International trips.

Risk Governance

The committee meets twice yearly with an annual risk session at the Executive Committee Meeting in November. The county risk register has been updated following the November 2023 session and an action plan continues to be monitored.

Admin

Good progress has continued with enquiries and waiting lists. The appointment of an administrator for safe space and first response training has been successful and compliance monitoring has been strengthened this year with additional training organised as required.

Website upgrade and rebranding

The Girlguiding Shropshire website has been successfully upgraded and rebranded which has improved our ability to maintain and amend the pages on an ongoing basis. Our partnership with a local website developer has enabled us to attain affordable charity support and make this upgrade more accessible.

County Headquarters

Girlguiding Shropshire county headquarters is based at Telford and Wrekin Council premises, the current 3-year lease is due to end in October 2024. County Executive agreed at the May Executive meeting to sign a new 3-year lease for the renewal point in October 2024.

Lyneal Activity Centre

Lyneal usage continues to increase, and a more regular number of local day time bookings have been beneficial in maintaining regular income alongside other Girlguiding and Scouting hirers. The Executive committee has monitored the ongoing management of the building, led by the Lyneal lead volunteer. Suppliers have been hired to undertake some larger activities and a number of successful working party events organised, supporting the cleaning and completion of smaller jobs.

The Executive committee agreed to amend the charging structure this year to bring it in with other providers and simpler for groups to budget for. Thanks goes to our Lyneal lead volunteer and county treasurer who have been instrumental in ensuring Lyneal is well maintained and available to all.

Trustees

In this financial year to July 2024, no new trustees have been appointed. I would like to thank the county team, our president and trustees for their hard work and support during my tenure as County commissioner. Best wishes to the new team as they move forward with the leadership of Girlguiding in Shropshire during the coming 5 years

THE GUIDE ASSOCIATION SHROPSHIRE COUNTY
FINANCIAL REPORT FOR THE YEAR ENDED 31 JULY 2024

Financial Review

This year we have undertaken a review of our investments and moved them onto a managed platform using local Financial Advisers. The Finance Committee agreed this was the best way to continue to manage our funds.

We also maintained the fees we charge to our members by agreeing any shortfall was to be covered by our cash savings. This was in acknowledgement to the funds we have and how to best support our members.

Reserves Policy

The trustees have agreed to maintain a policy of 3 years worth of rent and service charge payments for the county office which equates to approximately £52,000 and will be reviewed at every financial year end

The bank balances at the year end continue to be in excess of this policy and we expect to spend funds in line with this policy in future financial periods

Free reserves at the year end were £139,530 which are a representation of the charity's unrestricted funds (2023: £199,950)

Public Benefit

In planning our activities for the year the trustees have had due regard for the Charity Commission's guidance on public benefit. In fulfilling the aim of Guiding, being the development of girls and young women, the Charity has organised activities and supported leaders in running events physically and virtually. Girlguiding Shropshire continues to support the national Girlguiding programme by continuing to train it's members free of charge

On behalf of the County Executive Committee



.....
Mrs Victoria Smith-Roe
County Treasurer

Date:

.....
23 | 01 | 2025
.....

INDEPENDENT EXAMINER'S REPORT
TO THE TRUSTEES OF THE GUIDE ASSOCIATION SHROPSHIRE

Independent Examiner's Report

I report to the charity trustees on my examination of the accounts of the charity for the period ended 31 July 2024 which are set out on pages 5 to 7.

Responsibilities and basis of report

As the charity's trustees you are responsible for the preparation of the accounts in accordance with the requirements of the Charities Act 2011 ('the Act').

I report in respect of my examination of the charity's accounts carried out under section 145 of the Act and in carrying out my examination I have followed all the applicable Directions given by the Charity Commission under section 145(5)(b) of the Act.

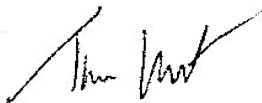
Independent examiner's statement

I have completed my examination. I confirm that no material matters have come to my attention in connection with the examination giving me cause to believe that in any material respect:

1. accounting records were not kept in respect of the charity as required by section 130 of the Act; or
2. the accounts do not accord with those records.

I have no concerns and have come across no other matters in connection with the examination to which attention should be drawn in this report in order to enable a proper understanding of the accounts to be reached.

Signed:



Dated: 19/02/2025

Tim Lunt BA (Hons) FCCA MTPI

WR Partners
Chartered Accountants
Belmont House
Shrewsbury Business Park
Shrewsbury
Shropshire
SY2 6LG

THE GUIDE ASSOCIATION SHROPSHIRE COUNTY
RECEIPTS AND PAYMENTS ACCOUNT
FOR THE YEAR ENDED 31 JULY 2024

	Unrestricted	Restricted	Designated	Endowment	2024 Total	2023 Total
Receipts						
Donations & Grants	25,000	-	-	-	25,000	-
Letting fees	6,777	-	-	-	6,777	5,541
Members subscriptions	22,725	-	-	-	22,725	23,586
Investment income	34,563	-	-	354	34,917	48,740
Other income	5,480	61,510	-	-	66,990	29,017
Sale of badges	22,376	-	-	-	22,376	26,337
Sundry	-	-	-	-	-	-
Total receipts	116,921	61,510	-	354	178,785	133,222
Payments						
Direct charitable expenditure	150,304	46,667	1,807	375	199,153	68,320
Management and administration	26,676	-	-	-	26,676	23,084
Total payments	176,979	46,667	1,807	375	225,828	91,404
Surplus / (Deficit) of receipts over payments	(60,058)	14,843	(1,807)	(21)	(47,043)	41,818
Net Movement in funds	(60,058)	14,843	(1,807)	(21)	(47,043)	41,818
Bank and cash balances at 1st August 2023	199,590	3,516	9,732	6,915	219,753	177,935
Bank and cash balances at 31st July 2024	139,532	18,359	7,925	6,894	172,710	219,753

THE GUIDE ASSOCIATION SHROPSHIRE COUNTY
STATEMENT OF ASSETS AND LIABILITIES
AS AT 31 JULY 2024

	Type	2024	2023
<u>Cash Funds</u>			
Bank and cash balances	Unrestricted	139,530	199,590
Bank and cash balances	Designated	7,925	9,732
Bank and cash balances	Restricted	18,359	3,516
Bank and cash balances	Endowment	6,895	6,915
Total cash funds		172,709	219,753
 <u>Investment Assets</u>			
Charifund 1,876 units	Unrestricted	-	26,991
Charifund 409 units	Endowment	6,204	5,885
Quilter Investments	Unrestricted	102,235	-
		108,439	32,876
 <u>Assets retained for the charity's own use</u>			
Freehold property Lyneal Centre, Lyneal	Unrestricted	204,171	204,171
Fixtures, fittings and equipment Lyneal Centre	Unrestricted	10,000	10,000
Badges & Office Stocks	Unrestricted	7,592	9,233
Sundry Debtors	Unrestricted	871	1,665
		222,634	225,069
 <u>Liabilities</u>			
Sundry Creditors	Unrestricted	1,206	897

These accounts were approved by



Mrs V Smith-Roe
County Treasurer
 Date: 23/01/2025



Ms Sarah Myers
County Commissioner
 Date: 11/2/25

THE GUIDE ASSOCIATION SHROPSHIRE COUNTY
NOTES TO THE ACCOUNTS 2024

	<u>Opening Balance</u>	<u>Receipts</u>	<u>Payments</u>	<u>Transfer</u>	<u>Surplus /(deficit) of receipts over payments</u>	<u>Closing Balance</u>
<u>Unrestricted Funds</u>						
Shropshire Main	152,898	85,466	(140,375)	2,300	(52,608)	100,290
Lyneal Activities Centre	39,058	9,926	(14,364)	(600)	(5,038)	34,020
Badge Account	6,409	21,433	(20,493)	(2,700)	(1,760)	4,649
Training Committee	1,225	96	(1,748)	1,000	(652)	573
	<u>199,590</u>	<u>116,920</u>	<u>(176,979)</u>	<u>-</u>	<u>(60,058)</u>	<u>139,532</u>
<u>Restricted Funds</u>						
Switzerland 2023 trip	3,516	-	(3,516)	-	(3,516)	-
County Camp 2024	-	61,510	(43,151)	-	18,359	18,359
<u>Designated Funds</u>						
Butler Fund	9,732		(1,807)	-	(1,807)	7,925
<u>Endowment Fund</u>						
Elizabeth Mowat Memorial Fund	6,915	354	(375)	-	(21)	6,893
	<u>219,753</u>	<u>178,784</u>	<u>(225,828)</u>	<u>-</u>	<u>(47,043)</u>	<u>172,709</u>

The Outdoor Activity Centre completed it's spend of the designated maintenance fund

We were given a donation of £10,000 from Mrs Butler's estate to spend at the discretion of the trustees

The Elizabeth Mowat Memorial Fund was set up in February 1979 following the receipt of £1,000. The income arising is to be applied at the absolute discretion of the County Commissioner for charitable purposes connected with the Guide movement in the county of Shropshire. Some grants have been made this year

THE GUIDE ASSOCIATION SHROPSHIRE COUNTY
CONSOLIDATED RECEIPTS AND PAYMENTS ACCOUNTS
FOR THE YEAR ENDED 31st JULY 2024

	Main	Lyneal	Badge	Mowat Swannick	Training	2024 Total	2023 Total
Receipts							
Donations	25,000	-	-	-	-	25,000	-
Letting fees	-	6,777	-	-	-	6,777	5,541
Members subscriptions	22,725	-	-	-	-	22,725	23,586
Investment income	33,816	747	-	354	-	34,917	48,740
Other income	65,018	1,875	-	-	96	66,990	29,017
Sale of merchandise	417	526	21,433	-	-	22,376	26,337
Sundry						-	-
Total receipts	146,976	9,926	21,433	354	96	178,784	133,222
Payments							
Direct charitable expenditure	162,511	14,200	20,318	375	1,748	199,152	68,320
Management and administration	26,337	164	175	-	-	26,676	23,084
Total payments	188,848	14,364	20,493	375	1,748	225,828	91,404
Inter accs transfers eliminate	2,300	(600)	(2,700)	-	1,000	-	-
Surplus / (Deficit) of receipts over payments	(39,572)	(5,038)	(1,760)	(21)	(652)	(47,044)	41,818

Bank & Cash

	Schedule	Type	2024	2023
CAF Current Account 00015665	Main	Unrestricted	13,416.50	56,919.00
	<i>Main</i>	<i>Designated</i>	-	9,732.00
	<i>Main</i>	<i>Restricted</i>	-	3,516.00
CAF Savings Account 00092272	Main	Unrestricted	86,872.63	95,979.00
<i>Decision to move more funds to the</i>	<i>Main</i>	<i>Designated</i>	7,925.00	-
<i>savings</i>	<i>Main</i>	<i>Restricted</i>	18,359.48	-
Lloyds Current Account 00724365	Lyneal	Unrestricted	11,509.66	16,493.00
CAF Gold Account 00082024	Lyneal	Unrestricted	22,509.87	22,565.00
Lloyds Treasurers Account 00115010	Badge	Unrestricted	4,234.11	6,384.00
Cash in hand	Badge	Unrestricted	414.63	25.00
<i>Lloyds Account 01450277</i>	<i>Mowat</i>	<i>Endowment</i>	6,894.37	6,915.00
Lloyds Business Account 00972834	Training	Unrestricted	572.37	1,218.00
Cash in hand	Training	Unrestricted	0.64	7.00
			<hr/>	<hr/>
			172,709	219,753

Investments

	Schedule	Type	2024	2023
Charifund 1876 units	Main	Unrestricted	-	26,991
Charifund 409 units	Mowat	Endowment	6,204	5,885
Quilter	Main	Unrestricted	102,235	-
			<u>108,439</u>	<u>32,876</u>

Fixed Assets

	Schedule	2024	2023
Lyneal Centre, Lyneal	Lyneal	190,000	190,000
Solar panels at above	Lyneal	14,171	14,171
Fixtures fittings equip at above	Lyneal	10,000	10,000
		<u>214,171</u>	<u>214,171</u>

Stock

	Schedule	2024	2023
Stock of badges	Badge	7,592	9,233
		<u>7,592</u>	<u>9,882</u>

Sundry Debtors

	Schedule	2024	2023
Badge sales	Badge	753	1,606
Franking Machine	Badge	119	59
		<u>872</u>	<u>1,665</u>

Sundry Creditors

	Schedule	2024	2023
Badge invoices owing	Badge	1,050	86
Badge customer credits	Badge	156	811
		<u>1,206</u>	<u>897</u>

THE GUIDE ASSOCIATION - SHROPSHIRE COUNTY

England & Wales - Charity number 1035091

Accounts

THE GUIDE ASSOCIATION SHROPSHIRE COUNTY

CONSOLIDATED ACCOUNTS

FOR THE YEAR ENDED

31 July 2023

REGISTERED CHARITY NO. 1035091

THE GUIDE ASSOCIATION SHROPSHIRE COUNTY
MEMBERS REPORT FOR THE YEAR ENDED 31 JULY 2023

Membership of the County Executive Committee comprises:-

Voting Members

Ms Sarah Myers Miss C Coleman Mrs V Smith-Roe Mrs A Ireland Miss J Hurst Mrs L Mitchell Mrs Amanda Mitchell Mrs N Fancett Miss R Harding Miss A Taylor Miss A Gray Mrs D Griffiths	Role ended 9/12/2022 Role started 9/12/2022 Role ended 1/12/2022 Role started 1/12/2022	The County Commissioner The Assistant County Commissioner The County Treasurer } The Division Commissioners
---	--	---

Non Voting Members

Mrs M Rayner Mrs B Hodges Mrs S Smith-Roe Mrs M Wynn Mrs C Nockles	Role ended 01/08/2022 Role started 01/08/2022	} Chairman/Trefoil Guild Specialist Advisers Joint Division Commissioner - Ludlow
--	--	--

Charity registered number

1035091

Principal Office

3&4 Conwy House
 St Georges Court
 St Georges Road
 Donnington
 Telford
 TF2 7BF

Independent Review

WR Partners
 Belmont House
 Shrewsbury Business Park
 Shrewsbury
 Shropshire
 SY2 6LG

Main Bankers

CAF Bank Ltd
 25 King's Hill
 King's Hill
 West Malling
 Kent
 ME19 4JQ

THE GUIDE ASSOCIATION SHROPSHIRE COUNTY
ANNUAL REPORT FOR THE YEAR ENDED 31 JULY 2023

The County Executive Committee, who act as trustees, in accordance with the bye law 9.2C of the Royal Charter of The Guide Association, shall be responsible for directing the development of the principles and aims of Girlguiding, within the County of Shropshire, in accordance with the current issue of:-

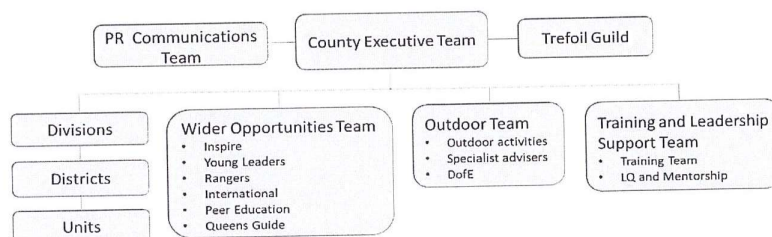
The Royal Charter of Bye Laws
The Guiding Manual
The Handbooks

The Guide Association is an unincorporated charity, constituted under a Royal Charter granted 14 December 1922.

Methods, policies & procedures for the appointment and induction of new trustees

The trustees are the voting members of the Executive Committee. They are the County Commissioner, who is appointed by the Midland Region Commissioner, her Assistant, the County Treasurer and the Division Commissioners all of whom are the appointees of the County Commissioner in consultation with the other trustees. Four meetings are held each year in line with the County Constitution.

The Management structure of Girlguiding Shropshire is as follows. All communications are bi-directional.



Objectives and Activities

Girlguiding UK is the UK's largest voluntary organisation for girls and young women. Girlguiding Shropshire is set within Girlguiding Midlands Region and is therefore an integral part of the National Association.

Girlguiding UK's strategy - Today, tomorrow, together

Girlguiding exists to help girls and young women find their voice, and build skills and confidence – inspiring them to discover the best in themselves and empower them to make a positive difference in their community. We help girls know they can do anything.

Goals

- Exceptional experiences for girls
- Rewarding volunteer experience
- Impactful and inclusive
- Getting the basics right

Achievements and Performance

Exceptional experiences for girls

Events

We planned to hold 3 girl events this year. Let Loose in Ludlow was our Thinking Day sleepover for girls aged 13+ and was successful with 21 (about 20%) participants from across the county including representatives from some of our more remote areas. Participants worked towards the WAGGGS thinking day badge and played a wide game. The event was paired with a Sunrise Walk and we were joined by other members under the leadership of the county walking advisor. In May we held an all section county Water Day, units took to the water to canoe, paddle board and travel by barge in both Shrewsbury and Lyneal. The event was coordinated by our county water advisor and was very popular. We had also designed an all section day event called GOALS (Get Out And Learn Skills) with a county football Club, unfortunately we were unable to secure the event in time for the ladies football season. There are plans to commence discussions with a different club and hold this event in 2023-24.

The Shropshire Circles Challenge badge was launched in 2022 incorporating 8 topics: Sing, Travel, Explore, Play, Learn, Create, Cook and Share. All activities are based on a circular theme and designed to encourage units to work together and take part in groups to learn new skills from challenging another unit to play circular games to inviting someone from another country in the world to share their culture. This has been well supported with c. 400 participants.

C. 200 of the Shropshire members also attended the Midlands Megamix Camp at Beaudesert during the summer holidays.

Rewarding volunteer experience

Leaders in Training

Significant focus has been placed on supporting Leaders In Training to complete the Leadership Qualification ahead of Sept 2023 when this would be replaced by the new Leadership Development Programme. Our Leadership Qualification Coordinator delivered training to all county mentors and worked with them to upskill in preparation for the new programme. Working with the Leaders in Training, the coordinator and mentors supported the finalisation of evidence and signing off the old qualification or the transition of volunteers to the new programme. This has ensured there are no outstanding, part completed, qualifications following the summer holiday and all new trainees are on the new programme.

Training

The annual county day was held at the Charlton School Wellington on the 22nd April with a theme of MAGIC. The programme included skills training and an motivational speaker who ran a workshop style session. A series of face to face trainings have been delivered during the year to cover mandated training in support of the webinars available on the new Learning and Development Platform. Additionally, face to face modules to support the completion of the leadership qualification.

Volunteer events

The Shropshire Way Challenge Badge

The Shropshire Shamblers, a walking group, formed in between the lockdowns to take part in and promote the Girlguiding Shropshire Way Challenge. They have undertaken a series of walks over the year, led by different members of the walking group, with an open invitation for volunteers to join in. As a county we recorded 112 different walks, and covered 513 miles or 2257 guiding miles (i.e. the total mileage done collectively by all participants). We started the Challenge in February 2020 but this was extended from one year to three due to the pandemic. Overall, more than 116 members (10 from outside the County) have taken part, including 22 Brownie Guides, 29 Ranger Guides and 65 adult leaders.

Volunteer thank you

In September 2022, our County President hosted a thank you event for long service awards at Hodnet Hall in North Shropshire, including a cream tea and guided walk through the gardens.

Awards

We appointed a new Chair of Awards and subsequently launched our Shropshire Hero Awards, candidates are nominated by local volunteers for a member who goes the extra mile to make a difference and we have awarded 25 so far this year. We have received very few nominations for county awards and this will be an area of focus for next year.

Inclusive and impactful

PR

Membership numbers have increased since the pandemic, remaining lower than pre pandemic levels. Volunteer recruitment has been a priority and PR activities were a key focus in the financial year. An increased budget facilitated a volunteer week campaign on the digital boards in Telford Town Centre. This combined with posters for all Districts and recruitment postcards provided collateral for recruitment. Following the rebrand the Executive Committee approved investment in County and Division recruitment materials including, new table cloths, banners, pull up banners and feather flags for the new Autumn term 2023. A gazebo has also been purchased. We continued our relationship with Shropshire Festivals, attending Kids Fest in Telford for 2 days to promote Girlguiding in the county.

HM the Queen's funeral

Girlguiding Shropshire members were invited to take part in the commemoration service in Shrewsbury Abbey and a cross section of young members and leaders attended, laying a small posy in remembrance.

New Partnerships

The training team has piloted diversity and inclusion training which will continue to be developed in 2023/4. The opportunity has arisen to work with Telford and Wrekin Council specialist teams to develop training material to support young members to support each other in the unit, after an initial meeting we are planning to take this forward and work together.

Brilliant basics

Financial Governance

The Executive Committee agreed to maintain 2023 subscriptions levy for a 3rd year to support units in the cost of living crisis. Financial performance of savings and investments are delivering expected income to support the budget forecast. In line with best practice there are plans to review investment options to ensure the income from savings is maximised and continues to support the county to undertake its activities. The Finance committee has received a small number of nominations during the year for grants from the 'Girls Have Adventures' legacies to support young members to attend large scale events.

Risk Governance

The committee meets twice yearly with an annual risk session at the Executive Committee Meeting in November. The county risk register has been updated following the November 2022 session and an action plan is in place.

Admin

Good progress has been made this year with reviewing enquiries and waiting lists. Safe space and first response training has been a focus ensuring that renewals are as easy as possible and volunteers are renewing in advance of deadlines to ensure compliance across the county.

Website upgrade and rebranding

The Executive Committee approved the upgrade of the Girlguiding Shropshire website to a new version of the software providing easier ongoing maintenance and configuration by our county website administrator. At the same time we took the opportunity to restructure and rebrand the pages.

Lyneal Activity Centre

A new Chair of Lyneal has been appointed. Lyneal usage continues to increase and a small number of local users are also increasing regular income, complementing income from Girlguiding hirers. The Executive Committee agreed a proposal to close the Lyneal management committee due to lack of volunteers. Lyneal matters are now managed as part of the county executive meetings and risk and finance management is aligned to the county risk governance and finance committees. The Chair of Lyneal (lead volunteer) attends the Executive Committee to represent Lyneal matters.

Trustees

In this financial year, 2 new trustees have been appointed as the previous trustee roles came to their end.

THE GUIDE ASSOCIATION SHROPSHIRE COUNTY
FINANCIAL REPORT FOR THE YEAR ENDED 31 JULY 2023

Financial Review

This year we have moved to more "business as usual" and the trustees agreed to maintain our annual fee at the same rate as previous years. We therefore understood that there may be a requirement to spend some of our savings in order to support this.

We also had one of our investments lapse which also meant additional funds hitting the bank account. Post year end a meeting has been set up with a Financial Advisor to help the trustees make a decision with regards to our investments and cash balances going forwards.

Reserves Policy

The trustees have agreed to maintain a policy of 3 years worth of rent and service charge payments for the county office which equates to approximately £52,000 and will be reviewed at every financial year end

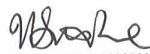
The bank balances at the year end continue to be in excess of this policy and we expect to spend funds in line with this policy in future financial periods

Free reserves at the year end were £199,590 which are a representation of the charity's unrestricted funds (2022: £154,917)

Public Benefit

In planning our activities for the year the trustees have had due regard for the Charity Commission's guidance on public benefit. In fulfilling the aim of Guiding, being the development of girls and young women, the Charity has organised activities and supported leaders in running events physically and virtually. Girlguiding Shropshire continues to support the national Girlguiding programme by continuing to train it's members free of charge

On behalf of the County Executive Committee



.....
Mrs Victoria Smith-Roe
County Treasurer

Date:

.....
17/12/2023
.....

INDEPENDENT EXAMINER'S REPORT

TO THE TRUSTEES OF THE GUIDE ASSOCIATION SHROPSHIRE

Independent Examiner's Report

I report to the charity trustees on my examination of the accounts of the charity for the period ended 31 July 2023 which are set out on pages 5 to 7.

Responsibilities and basis of report

As the charity's trustees you are responsible for the preparation of the accounts in accordance with the requirements of the Charities Act 2011 ('the Act').

I report in respect of my examination of the charity's accounts carried out under section 145 of the Act and in carrying out my examination I have followed all the applicable Directions given by the Charity Commission under section 145(5)(b) of the Act.

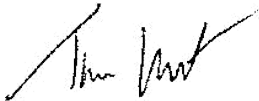
Independent examiner's statement

I have completed my examination. I confirm that no material matters have come to my attention in connection with the examination giving me cause to believe that in any material respect:

1. accounting records were not kept in respect of the charity as required by section 130 of the Act; or
2. the accounts do not accord with those records.

I have no concerns and have come across no other matters in connection with the examination to which attention should be drawn in this report in order to enable a proper understanding of the accounts to be reached.

Signed:



Dated: 13/02/2024

Tim Lunt

WR Partners
Chartered Accountants
Belmont House
Shrewsbury Business Park
Shrewsbury
Shropshire
SY2 6LG

THE GUIDE ASSOCIATION SHROPSHIRE COUNTY
RECEIPTS AND PAYMENTS ACCOUNT
FOR THE YEAR ENDED 31 JULY 2023

	Unrestricted	Restricted	Designated	Endowment	2023 Total	2022 Total
Receipts						
Donations & Grants	-	-	-	-	-	11,002
Letting fees	5,541	-	-	-	5,541	3,756
Members subscriptions	23,586	-	-	-	23,586	23,302
Investment income	48,396	-	-	344	48,740	3,703
Other income	16,397	12,620	-	-	29,017	22,502
Sale of badges	26,337	-	-	-	26,337	32,510
sundry	2	-	-	(1)	-	-
Total receipts	<u>120,259</u>	<u>12,620</u>	<u>-</u>	<u>343</u>	<u>133,222</u>	<u>96,775</u>
Payments						
Direct charitable expenditure	52,502	12,754	2,914	150	68,320	75,273
Management and administration	23,084	-	-	-	23,084	22,549
Total payments	<u>75,586</u>	<u>12,754</u>	<u>2,914</u>	<u>150</u>	<u>91,404</u>	<u>97,822</u>
Surplus / (Deficit) of receipts over payments	44,673	(134)	(2,914)	193	41,818	(1,047)
Net Movement in funds	44,673	(134)	(2,914)	193	41,818	-
Bank and cash balances at 1st August 2022	154,917	3,650	12,646	6,722	177,935	178,982
Bank and cash balances at 31st July 2023	<u>199,590</u>	<u>3,516</u>	<u>9,732</u>	<u>6,915</u>	<u>219,753</u>	<u>177,935</u>

THE GUIDE ASSOCIATION SHROPSHIRE COUNTY
STATEMENT OF ASSETS AND LIABILITIES
AS AT 31 JULY 2023

	Type	2023	2022
<u>Cash Funds</u>			
Bank and cash balances	Unrestricted	199,590	154,917
Bank and cash balances	Designated	9,732	3,650
Bank and cash balances	Restricted	3,516	6,722
Bank and cash balances	Endowment	6,915	12,646
Total cash funds		219,753	177,935
<u>Investment Assets</u>			
Charifund 1,876 units	Unrestricted	26,991	28,417
Charifund 409 units	Endowment	5,885	6,195
CAF Income Account	Unrestricted	-	40,488
CAF Investments	Unrestricted	-	8,098
		32,876	83,198
<u>Assets retained for the charity's own use</u>			
Freehold property Lyneal Centre, Lyneal	Unrestricted	204,171	204,171
Fixtures, fittings and equipment Lyneal Centre	Unrestricted	10,000	10,000
Badges & Office Stocks	Unrestricted	9,233	9,882
Sundry Debtors	Unrestricted	1,665	1,257
		225,069	225,310
<u>Liabilities</u>			
Sundry Creditors	Unrestricted	897	869

These accounts were approved by



Mrs V Smith-Roe
County Treasurer

Date: 17/12/2023



Ms Sarah Myers
County Commissioner

Date: 18/12/2023

THE GUIDE ASSOCIATION SHROPSHIRE COUNTY
NOTES TO THE ACCOUNTS 2023

	<u>Opening</u> <u>Balance</u>	<u>Receipts</u>	<u>Payments</u>	<u>Transfer</u>	<u>Surplus /(deficit)</u> <u>of receipts</u> <u>over payments</u>	<u>Closing</u> <u>Balance</u>
<u>Unrestricted Funds</u>						
Shropshire Main	114,394	74,620	(36,217)	100	38,504	152,898
Lyneal Activities Centre	31,472	20,225	(12,039)	(600)	7,586	39,058
Badge Account	7,072	25,387	(23,050)	(3,000)	(663)	6,409
Training Committee	1,979	26	(4,280)	3,500	(754)	1,225
	<u>154,917</u>	<u>120,258</u>	<u>(75,586)</u>	<u>-</u>	<u>44,673</u>	<u>199,590</u>
<u>Restricted Funds</u>						
Switzerland 2023 trip	3,650	12,620	(12,754)	-	(134)	3,516
<u>Designated Funds</u>						
Outdoor Activity Centre Fund	2,646	-	(2,646)	-	(2,646)	-
Butler Fund	10,000	-	(268)	-	(268)	9,732
<u>Endowment Fund</u>						
Elizabeth Mowat Memorial Fund	6,722	344	(150)	-	194	6,915
	<u>177,935</u>	<u>133,222</u>	<u>(91,404)</u>	<u>-</u>	<u>41,818</u>	<u>219,753</u>

The Outdoor Activity Centre completed it's spend of the designated maintenance fund

We were given a donation of £10,000 from Mrs Butler's estate to spend at the discretion of the trustees

The Elizabeth Mowat Memorial Fund was set up in February 1979 following the receipt of £1,000. The income arising is to be applied at the absolute discretion of the County Commissioner for charitable purposes connected with the Guide movement in the county of Shropshire. Some grants have been made this year

THE GUIDE ASSOCIATION SHROPSHIRE COUNTY
CONSOLIDATED RECEIPTS AND PAYMENTS ACCOUNTS
FOR THE YEAR ENDED 31st JULY 2023

	Main	Lyneal	Badge	Mowat Swannick	Training	2023 Total	2022 Total
Receipts							
Donations	-	-	-	-	-	-	11,002
Letting fees	145	5,396	-	-	-	5,541	3,756
Members subscriptions	23,586	-	-	-	-	23,586	23,302
Investment income	40,572	7,824	-	344	-	48,740	3,703
Other income	22,938	6,079	-	-	-	29,017	22,501
Sale of merchandise	-	925	25,387	-	25	26,337	32,511
Sundry	2	-	-	(1)	-	-	-
Total receipts	87,243	20,224	25,387	343	25	133,222	96,775
Payments							
Direct charitable expenditure	27,271	14,491	22,836	150	3,572	68,320	75,272
Management and administration	21,969	194	214	-	707	23,084	22,550
Total payments	49,240	14,685	23,050	150	4,279	91,404	97,822
Inter accs transfers eliminate	100	(600)	(3,000)	-	3,500	-	-
Surplus / (Deficit) of receipts over payments	38,103	4,939	(663)	193	(754)	41,818	(1,047)

Bank & Cash

	Schedule	Type	2023	2022
CAF Current Account 00015665	Main	Unrestricted	56,919.00	19,362.00
	<i>Main</i>	<i>Designated</i>	<i>9,732.00</i>	<i>10,000.00</i>
	<i>Main</i>	<i>Restricted</i>	<i>3,516.00</i>	<i>3,650.00</i>
CAF Savings Account 00092272	Main	Unrestricted	95,979.00	95,032.00
Lloyds Current Account 00724365	Lyneal	Unrestricted	16,493.00	10,922.00
CAF Gold Account 00082024	Lyneal	Unrestricted	22,565.00	20,550.00
	<i>Lyneal</i>	<i>Designated</i>	-	<i>2,646.00</i>
Lloyds Treasurers Account 00115010	Badge	Unrestricted	6,384.00	7,021.00
Cash in hand	Badge	Unrestricted	25.00	50.00
<i>Lloyds Account 01450277</i>	<i>Mowat</i>	<i>Endowment</i>	<i>6,915.00</i>	<i>6,722.00</i>
Lloyds Business Account 00972834	Training	Unrestricted	1,218.00	1,947.00
Cash in hand	Training	Unrestricted	7.00	33.00
			219,753	177,935
Check Assets			-	-
Check R&P			-	-

Investments

	Schedule	Type	2023	2022
Charifund 1876 units	Main	Unrestricted	26,991	28,417
Charifund 409 units	Mowat	Endowment	5,885	6,195
CAF 46.077.0370	Main	Unrestricted	-	40,488
CAF 9,215.4080	Lyneal	Unrestricted	-	8,098
			<u>32,876</u>	<u>83,198</u>

Fixed Assets

	Schedule	2023	2022
Lyneal Centre, Lyneal	Lyneal	190,000	190,000
Solar panels at above	Lyneal	14,171	14,171
Fixtures fittings equip at above	Lyneal	10,000	10,000
		<u>214,171</u>	<u>214,171</u>

Stock

	Schedule	2023	2022
Stock of badges	Badge	9,233	9,351
Training & Shop	Training	-	531
		<u>9,233</u>	<u>9,882</u>

Sundry Debtors

	Schedule	2023	2022
Badge sales	Badge	1,606	1,219
Franking Machine	Badge	59	38
Balances with suppliers	Lyneal	-	-
		<u>1,665</u>	<u>1,257</u>

Sundry Creditors

	Schedule	2023	2022
Badge invoices owing	Badge	86	767
Badge customer credits	Badge	811	102
		<u>897</u>	<u>869</u>

THE GUIDE ASSOCIATION - SHROPSHIRE COUNTY

England & Wales - Charity number 1035091

Accounts

THE GUIDE ASSOCIATION SHROPSHIRE COUNTY

CONSOLIDATED ACCOUNTS

FOR THE YEAR ENDED

31 July 2022

REGISTERED CHARITY NO. 1035091

THE GUIDE ASSOCIATION SHROPSHIRE COUNTY
MEMBERS REPORT FOR THE YEAR ENDED 31 JULY 2022

Membership of the County Executive Committee comprises:-

Voting Members

Ms Sarah Myers			The County Commissioner
Miss C Coleman			The Assistant County Commissioner
Mrs V Smith-Roe			The County Treasurer
Mrs A Ireland		}	The Division Commissioners
Mrs Lisa Mitchell			
Mrs Amanda Mitchell			
Miss R Harding			
Miss A Taylor			
Ms D Griffiths			
Mrs L Arthan	Role ended		
Miss A Gray	Role started		
Miss B Farrington	Role started		

Non Voting Members

Mrs M Rayner		}	Chairman/Trefoil Guild Chair of Lyneal Chair of Awards and County Go Co-ordinator
Mrs B Hodges			
Mrs M Wynn			

Charity registered number

1035091

Principal Office

Suites 3&4 Conwy House
 St Georges Court
 St Georges Road
 Donnington
 Telford
 TF2 7BF

Independent Review

WR Partners
 Belmont House
 Shrewsbury Business Park
 Shrewsbury
 Shropshire
 SY2 6LG

Main Bankers

CAF Bank Ltd
 25 King's Hill
 King's Hill
 West Malling
 Kent
 ME19 4JQ

**THE GUIDE ASSOCIATION SHROPSHIRE COUNTY
ANNUAL REPORT FOR THE YEAR ENDED 31 JULY 2022**

The County Executive Committee, who act as trustees, in accordance with the bye law 9.2C of the Royal Charter of The Guide Association, shall be responsible for directing the development of the principles and aims of Girlguiding, within the County of Shropshire, in accordance with the current issue of:-

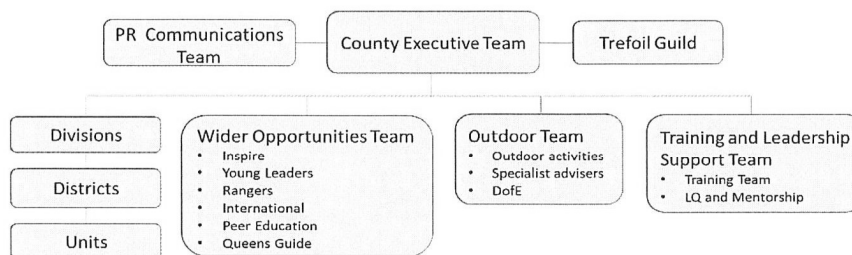
- The Royal Charter of Bye Laws
- The Guiding Manual
- The Handbooks

The Guide Association is an unincorporated charity, constituted under a Royal Charter granted 14 December 1922.

Methods, policies & procedures for the appointment and induction of new trustees

The trustees are the voting members of the Executive Committee. They are the County Commissioner, who is appointed by the Midland Region Commissioner, her Assistant, the County Treasurer and the Division Commissioners all of whom are the appointees of the County Commissioner in consultation with the other trustees. Four meetings are held each year in line with the County Constitution.

The Management structure of Girlguiding Shropshire is as follows. All communications are bi-directional.



Objectives and Activities

The Guide Association is the UK's largest voluntary organisation for girls and young women. Girlguiding Shropshire is set within the Guide Association Midlands Region and is therefore an integral part of the National Association.

Girlguiding UK's vision
An equal world where all girls can make a positive difference, be happy, safe and fulfil their potential.

Girlguiding UK's Mission

Through fun, friendship, challenge and adventure we empower girls to find their voice, inspiring them to discover the best in themselves and to make a positive difference in their community.

Our values are our shared commitment to be: Caring, Challenging, Empowering, Fun, Inclusive and Inspiring.

Achievements and Performance

Girlguiding is the leading charity for girls and young women in the UK. We build girls' confidence and raise their aspirations. We give them the chance to discover their full potential and encourage them to be a powerful force for good. We give them a space to have fun. Girlguiding Shropshire continues to offer our young women fun, exciting activities and the chance to make lifelong friends. You'll find us in many communities, helping to give girls a head start in life and encouraging them to be happy, self-confident and curious about the difference they can make.

The pandemic continued to impact youth organisations across the UK and specifically Girlguiding Shropshire activities in the 2021/2022 financial year however, units have progressively returned to regular unit meeting since summer 2021 and through 2022. The County Committees recommenced face to face meetings, supplemented with zoom in order to conduct business in line with our constitution and individual committee's terms of reference. New Division Commissioner (Trustee) appointments were made in Oswestry and Wrekin Divisions as roles expired.

Membership began recovery in advance of the February 2022 annual subscriptions, although still c.1000 lower than prepandemic numbers. Whilst a proportion of our unit teams were able to commit to transitioning meeting to virtual mediums, distributing packs and other equipment to homes where safe to do so, family and work commitments and the technology requirements meant that this understandably wasn't possible or accessible for others. As a result we have, with regret, decided to close c.14 units during the year and Cleobury Mortimer District in Ludlow Division has been temporarily suspended until new volunteers can be found.

The county budget was supported by a proportionate use of some of our savings which aimed to mitigate, to a degree, the potential impact of the increase in the national levy on individual units, cost of living for members and to support large scale events to encourage members to return to and engage with face to face Girlguiding activities. This helped us keep our county levy at a reasonable level and will need to be reviewed again as part of the annual budgeting cycle, dependant on membership numbers. We also received a welcome donation of uniform from a local (closing) stockist on the basis that this be gifted to children who were otherwise unable to purchase uniform and this has helped in areas of hardship. In addition, we have received some generous living legacies which have been ringfenced to support members to have adventures, at the discretion of the Trustees.

During 2021 we created a blended offering to support getting back to unit guiding during the transition. Our Shropshire Way walking challenge was extended for another year and we have now covered the full length of the route. We held our first large scale event since 2019 'Together at Attingham' and just under 1000 members came and joined the fun in our 4 zones 'Be Creative' 'All about Guiding' 'Fun and games' and 'Adventures Outdoors' across 2 days. Discussions are ongoing to further develop the partnership with Attingham Park over the next 2 years. We made 2 rainbow mosaics at the event which were presented by members to the NHS to say thank you, these are sited at the SaTH hospitals in Telford and Shrewsbury. St Mary's Church invited us to rekindle memories of the Guide and Brownie Units which met there in the 1940's having found flags in the tower. This led to our Shropshire memories month in February and an exhibition at the church, where Lady Baden Powell dedicated the first county standard. Our own version of 'The Apprentice comes to Shropshire' had a good response from our Ranger age group and a fun day was held at HQ. Additionally we had a number of young members raising money for Ukrainian Refugees and as a result 2 inspirational girls received the County Recognition Pin.

Celebrating the commitment and achievements of our volunteers is a priority and in 2021 we ran a virtual 'Raise a glass' celebration followed by a volunteer thank you event 'Carols in the Courtyard' at Attingham Park NT. For our H1 2022 awardees we held a face to face cream tea at Hodnet Hall, hosted by our County President.

The County Commissioners Challenge was launched in June 2020 to encourage units to invite the County Commissioner Team to visit meets and take part in activities, this aimed to encourage units to find ways to meet, get back to guiding and enjoying a variety of Girlguiding activities. From unit meetings to camps, breakfast with Santa, cinema evenings, pottery painting, activity weekends and Gold Award parties the take up has been fantastic and when the challenge finishes at the end of 2022 we will have visited and met with 1000 members across the county. A new challenge has been launched for 2022/23.

THE GUIDE ASSOCIATION SHROPSHIRE COUNTY
FINANCIAL REPORT FOR THE YEAR ENDED 31 JULY 2022

Financial Review

This year we have supported many events across the County and tried to raise the profile of Girlguiding in Shropshire. We took the decision to not increase our subscription payment from members due that many of the units still struggling to recover from lockdown.

We have therefore used some of our savings to cover this increased expenditure on PR representation

There is a trip planned for 2023 to Switzerland which monies have started to be received and these are shown in these accounts as restricted funds

We also were given a donation from a retired member and this is shown as Designated funds

Reserves Policy

The trustees have agreed to maintain a policy of 3 years worth of rent and service charge payments for the county office which equates to approximately £52,000 and will be reviewed at every financial year end

The bank balances at the year end continue to be in excess of this policy and we expect to spend funds in line with the new policy in future financial periods.

Free reserves at the year end were £154,917 which are a representation of the charity's unrestricted funds (2021: £169,292).

Public Benefit

In planning our activities for the year the trustees have had due regard for the Charity Commission's guidance on public benefit. In fulfilling the aim of Guiding, being the development of girls and young women, the Charity has organised activities and supported leaders in running events physically and virtually. Girlguiding Shropshire continues to support the national Girlguiding programme by continuing to train it's members free of charge.

On behalf of the County Executive Committee



.....
Mrs Victoria Smith-Roe
County Treasurer

Date:

.....05/01/2023.....

INDEPENDENT EXAMINER'S REPORT

TO THE TRUSTEES OF THE GUIDE ASSOCIATION SHROPSHIRE

Independent Examiner's Report

I report to the charity trustees on my examination of the accounts of the charity for the period ended 31 July 2021 which are set out on pages 5 to 7.

Responsibilities and basis of report

As the charity's trustees you are responsible for the preparation of the accounts in accordance with the requirements of the Charities Act 2011 ('the Act').

I report in respect of my examination of the charity's accounts carried out under section 145 of the Act and in carrying out my examination I have followed all the applicable Directions given by the Charity Commission under section 145(5)(b) of the Act.

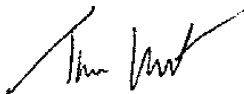
Independent examiner's statement

I have completed my examination. I confirm that no material matters have come to my attention in connection with the examination giving me cause to believe that in any material respect:

1. accounting records were not kept in respect of the charity as required by section 130 of the Act; or
2. the accounts do not accord with those records.

I have no concerns and have come across no other matters in connection with the examination to which attention should be drawn in this report in order to enable a proper understanding of the accounts to be reached.

Signed:



Dated: 30/01/2023

Tim Lunt

WR Partners
Chartered Accountants
Belmont House
Shrewsbury Business Park
Shrewsbury
Shropshire
SY2 6LG

THE GUIDE ASSOCIATION SHROPSHIRE COUNTY
RECEIPTS AND PAYMENTS ACCOUNT
FOR THE YEAR ENDED 31 JULY 2022

	Unrestricted	Restricted	Designated	Endowment	2022 Total	2021 Total
Receipts						
Donations & Grants	2	-	10,000	1,000	11,002	29
Letting fees	3,756	-	-	-	3,756	135
Members subscriptions	23,302	-	-	-	23,302	20,464
Investment income	3,388	-	-	315	3,703	3,145
Other income	18,852	3,650	-	-	22,502	3,763
Sale of badges	32,510	-	-	-	32,510	19,581
Total receipts	81,810	3,650	10,000	1,315	96,775	47,117
Payments						
Direct charitable expenditure	73,636	-	1,247	390	75,273	42,547
Management and administration	22,549	-	-	-	22,549	20,658
Total payments	96,185	-	1,247	390	97,822	63,205
Surplus / (Deficit) of receipts over payments	(14,375)	3,650	8,753	925	(1,047)	(16,088)
Net Movement in funds	(14,375)	3,650	8,753	925	(1,047)	(16,088)
Bank and cash balances at 1st August 2021	169,292	-	3,893	5,797	178,982	195,070
Bank and cash balances at 31st July 2022	154,917	3,650	12,646	6,722	177,935	178,982

THE GUIDE ASSOCIATION SHROPSHIRE COUNTY
STATEMENT OF ASSETS AND LIABILITIES
AS AT 31 JULY 2022

	Type	2022	2021
<u>Cash Funds</u>			
Bank and cash balances	Unrestricted	154,917	149,293
Bank and cash balances	Restricted	3,650	-
Bank and cash balances	Endowment	6,722	5,797
Bank and cash balances	Designated	12,646	3,893
Total cash funds		177,935	158,983
 <u>Investment Assets</u>			
Charifund 1,876 units	Unrestricted	28,417	28,937
Charifund 409 units	Endowment	6,195	6,309
CAF Income Account	Unrestricted	40,488	47,381
CAF Investments	Unrestricted	8,098	9,476
		83,198	92,103
 <u>Assets retained for the charity's own use</u>			
Freehold property Lyneal Centre, Lyneal	Unrestricted	204,171	204,171
Fixtures, fittings and equipment Lyneal Centre	Unrestricted	10,000	10,000
Badges & Office Stocks	Unrestricted	9,882	10,095
Sundry Debtors	Unrestricted	1,257	651
		225,310	224,917
 <u>Liabilities</u>			
Sundry Creditors	Unrestricted	869	594

These accounts were approved by

V Smith-Roe

Mrs V Smith-Roe
County Treasurer

Date:

05/01/2023

Sarah Myers

Ms Sarah Myers
County Commissioner

Date:

22/01/23

THE GUIDE ASSOCIATION SHROPSHIRE COUNTY
NOTES TO THE ACCOUNTS 2022

	<u>Opening</u> <u>Balance</u>	<u>Receipts</u>	<u>Payments</u>	<u>Transfer</u>	<u>Surplus /(deficit)</u> <u>of receipts</u> <u>over payments</u>	<u>Closing</u> <u>Balance</u>
<u>Unrestricted Funds</u>						
Shropshire Main	127,525	43,119	(60,850)	4,600	(13,131)	114,394
Lyneal Activities Centre	28,695	6,752	(3,375)	(600)	2,777	31,472
Badge Account	8,348	31,782	(29,058)	(4,000)	(1,276)	7,072
Training Committee	4,724	158	(2,903)	0	(2,745)	1,979
	<u>169,292</u>	<u>81,810</u>	<u>(96,186)</u>	<u>- -</u>	<u>14,375</u>	<u>154,917</u>
<u>Restricted Funds</u>						
Switzerland 2023 trip	-	3,650	-	-	3,650	3,650
<u>Designated Funds</u>						
Outdoor Activity Centre Fund	3,893	-	(1,247)	-	(1,247)	2,646
Butler Fund	-	10,000	-	-	10,000	10,000
<u>Endowment Fund</u>						
Elizabeth Mowat Memorial Fund	5,798	1,315	(390)	-	925	6,722
	<u>178,983</u>	<u>96,775</u>	<u>(97,823)</u>	<u>-</u>	<u>(1,047)</u>	<u>177,935</u>

The Outdoor Activity Centre continues to spend its maintenance fund and will continue to do so over the coming financial year

The Elizabeth Mowat Memorial Fund was set up in February 1979 following the receipt of £1,000. The income arising is to be applied at the absolute discretion of the County Commissioner for charitable purposes connected with the Guide movement in the county of Shropshire.

THE GUIDE ASSOCIATION SHROPSHIRE
CONSOLIDATED RECEIPTS AND PAYMENTS ACCOUNTS
FOR THE YEAR ENDED 31st JULY 2021

	Main	Lyneal	Badge	Mowat Swannick	Training	2022 Total	2021 Total
Receipts							
Donations - General	10,002			1,000		11,002	29
Letting fees		3,756				3,756	135
Members subscriptions	23,302					23,302	20,464
Investment income	3,062	326		315		3,703	3,145
Other income	20,265	2,216			20	22,501	3,763
Sale of merchandise	137	454	31,782		138	32,511	19,581
Total receipts	56,768	6,752	31,782	1,315	158	96,775	47,117
Payments							
Direct charitable expenditure	39,343	4,510	28,911	390	2,118	75,272	55,320
Management and administration	21,506	112	147		785	22,550	26,721
						-	
Total payments	60,849	4,622	29,058	390	2,903	97,822	92,923
Inter account Transfers	4,600	-	600	-	4,000	-	-
Surplus / (Deficit) of receipts over payments	519	1,530	(1,276)	925	(2,745)	-	1,047

Bank & Cash

	Schedule	Type	2022	2021
CAF Current Account 00015665	Main	Unrestricted	19362	32,553
		Designated	10000	
		Restricted	3650	
CAF Savings Account 00092272	Main	Unrestricted	95032	94,972
Lloyds Current Account 00724365	Lyneal	Unrestricted	10922	5,807
CAF Gold Account 00082024	Lyneal	Unrestricted	20550	2,888
	<i>Lyneal</i>	<i>Designated</i>	2646	3,893
Lloyds Treasurers Account 00115010	Badge	Unrestricted	7021	8,325
Cash in hand	Badge	Unrestricted	50	23
<i>Lloyds Account 01450277</i>	<i>Mowat</i>	<i>Endowment</i>	6722	5,797
Lloyds Business Account 00972834	Training	Unrestricted	1947	4,704
Cash in hand	Training	Unrestricted	33	21
			<hr/>	<hr/>
			177935	158,983
Check Assets			177935	158,983
Check R&P			177935	178,982

Investments

	Schedule	Type	2022	2021
Charifund 1876 units	Main	Unrestricted	28,417	28,937
Charifund 409 units	Mowat	Endowment	6,195	6,309
CAF 46.077.0370	Main	Unrestricted	40,488	47,381
CAF 9,215.4080	Lyneal	Unrestricted	8,098	9,476
			<u>83,198</u>	<u>92,103</u>

Fixed Assets

	Schedule	2022	2021
Lyneal Centre, Lyneal	Lyneal	190,000	190,000
Solar panels at above	Lyneal	14,171	14,171
Fixtures fittings equip at above	Lyneal	10,000	10,000
		<u>214,171</u>	<u>214,171</u>

Stock

	Schedule	2022	2021
Stock of badges	Badge	9,351	9,117
Training & Shop	Training	531	978
		<u>9,882</u>	<u>10,185</u>

Sundry Debtors

	Schedule	2022	2021
Badge sales	Badge	1,219	382
Franking Machine	Badge	38	33
Balances with suppliers	Lyneal	-	237
		<u>1,257</u>	<u>652</u>

Sundry Creditors

	Schedule	2022	2021
Badge invoices owing	Badge	767	461
Badge customer credits	Badge	102	133
		<u>869</u>	<u>594</u>

THE GUIDE ASSOCIATION - SHROPSHIRE COUNTY

England & Wales - Charity number 1035091

Accounts

THE GUIDE ASSOCIATION SHROPSHIRE COUNTY

CONSOLIDATED ACCOUNTS

FOR THE YEAR ENDED

31 July 2021

REGISTERED CHARITY NO. 1035091

THE GUIDE ASSOCIATION SHROPSHIRE

MEMBERS REPORT FOR THE YEAR ENDED 31 JULY 2021

Membership of the County Executive Committee comprises:-

Voting Members

Ms Sarah Myers		The County Commissioner
Miss C Coleman		The Assistant County Commissioner
Mrs V Smith-Roe		The County Treasurer
Mrs A Ireland	Role started 05/01/2021	The Division Commissioners
Mrs V Smith-Roe		
Mrs Amanda Mitchell		
Ms D Griffiths		
Miss R Harding		
Miss A Taylor		
Mrs L Arthan		

Non Voting Members

Mrs M Rayner		Chairman/Trefoil Guild
Mrs B Hodges	Role ended 02/08/2020 Role started 02/02/2020	Specialist Advisers
Mrs H Smith		
Mrs C Wassall		
Mrs J Price		
Mrs M Wynn		

Charity registered number

1035091

Principal Office

3&4 Conwy House
St Georges Court
St Georges Road
Donnington
Telford
TF2 7BF

Independent Review

WR Partners
Belmont House
Shrewsbury Business Park
Shrewsbury
Shropshire
SY2 6LG

Main Bankers

CAF Bank Ltd
25 King's Hill
King's Hill
West Malling
Kent
ME19 4JQ

**THE GUIDE ASSOCIATION SHROPSHIRE COUNTY
ANNUAL REPORT FOR THE YEAR ENDED 31 JULY 2021**

The County Executive Committee, who act as trustees, in accordance with the bye law 9.2C of the Royal Charter of The Guide Association, shall be responsible for directing the development of the principles and aims of Girlguiding, within the County of Shropshire, in accordance with the current issue of:-

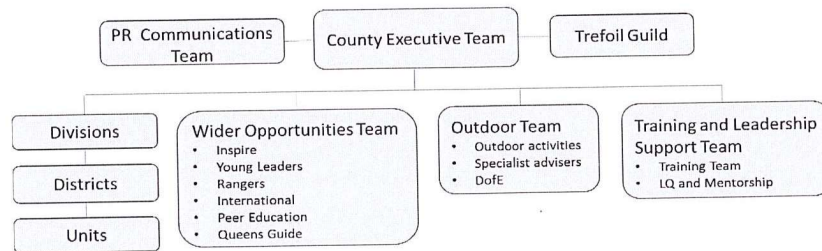
- The Royal Charter of Bye Laws
- The Guiding Manual
- The Handbooks

The Guide Association is an unincorporated charity, constituted under a Royal Charter granted 14 December 1922.

Methods, policies & procedures for the appointment and induction of new trustees

The trustees are the voting members of the Executive Committee. They are the County Commissioner, who is appointed by the Midland Region Commissioner, her Assistant, the County Treasurer and the Division Commissioners all of whom are the appointees of the County Commissioner in consultation with the other trustees. Four meetings are held each year in line with the County Constitution.

The Management structure of Girlguiding Shropshire is as follows. All communications are bi-directional.



Objectives and Activities

The Guide Association is the UK's largest voluntary organisation for girls and young women. Girlguiding Shropshire is set within the Guide Association Midlands Region and is therefore an integral part of the National Association.

Girlguiding UK's vision
An equal world where all girls can make a positive difference, be happy, safe and fulfil their potential.

Girlguiding UK's Mission
Through fun, friendship, challenge and adventure we empower girls to find their voice, inspiring them to discover the best in themselves and to make a positive difference in their community.
Our values are our shared commitment to be: Caring, Challenging, Empowering, Fun, Inclusive and Inspiring.

Achievements and Performance

Girlguiding is the leading charity for girls and young women in the UK. We build girls' confidence and raise their aspirations. We give them the chance to discover their full potential and encourage them to be a powerful force for good. We give them a space to have fun. Girlguiding Shropshire continues to offer our young women fun, exciting activities and the chance to make lifelong friends. You'll find us in many communities, helping to give girls a head start in life and encouraging them to be happy, self-confident and curious about the difference they can make.

As with all youth organisations, the pandemic continued to impact Girlguiding Shropshire activities in the 2020/2021 financial year. The County Committees continued to meet via zoom in order to conduct business in line with our constitution and individual committee's terms of reference. New Commissioner appointments were made in Ludlow, Shrewsbury, Oswestry and Wrekin Divisions as roles expired. New DofE, Young Leader, Ranger and Diversity advisers and lead volunteers were also appointed.

The county plan was reviewed following a virtual planning workshop and activities adjusted to meet the needs of our members. Several face to face events had been rescheduled from 2019/2020 and these were again rescheduled once government guidance enabled them to take place. Adaptions to the national programme have continued to enable virtual delivery within the theme of 'Adventures at home'. Midlands Region have also provided virtual challenge badges including variants on Celebrate at Home and Fascinate, a STEM challenge. Units have continued to adapt to provide online meetings and about 30% of our units continued to meet outdoors and face to face when guidance permitted, subject to full risk assessment.

Within the county we held two virtual STEM workshops for Brownies, in partnership with The STEM Workshop, these were attended by small numbers but delivered by Rangers and was a good pilot for potential future events. We delivered a virtual International event, Go Global which successfully attracted about 100 participants aged 12+ to take part in International themed activities. Midsummer Magic, a virtual sleepover and activity weekend, was delivered through video on our YouTube channel and Facebook pages (supported by self help guides) badges were available to those who took part. The Shropshire Way Challenge continued with c.600 miles walked by our members. We also successfully planned a Water Activity Taster Day across 3 sites which we were able to hold in early Sept 2021 - 200 members attended and completed various activities to inspire units to take to the water. We also developed a County Day in partnership with the National Trust at Attingham Park which ran in September 2021, including a recruitment campaign.

Recognising the commitment and achievement of our volunteers is always very important and in 2020 we delivered 3 virtual celebration events. 'Raise a glass' was an evening event with the opportunity for volunteer recipients of long service and county awards to celebrate together with the county team. We also held an afternoon virtual celebration for our young members who received Gold Awards during the pandemic in 2020.

The County Commissioners Challenge was launched in June 2020 to encourage units to invite the County Commissioner Team to visit meets and take part in activities, this aims to encourage units to find ways to meet, get back to guiding and enjoying a variety of Girlguiding activities. We aim to visit all 190 units by 31/12/2022 - early adoption has been good.

The Growth and Retention Task and Finish Group continued with representatives from each Division and developed a Growth and Retention challenge badge. They also developed an activity guide to support a partnership with the National Trust site at Cardingmill Valley. The full impact of the pandemic on 2021 annual subscriptions was a c.30% decrease in overall membership, at the time of writing this report the levels are showing early signs of a recovery.

THE GUIDE ASSOCIATION SHROPSHIRE COUNTY
FINANCIAL REPORT FOR THE YEAR ENDED 31 JULY 2021

Financial Review

The year started with still being in the lockdown for the coronavirus pandemic and uncertainty as to how Girlguiding UK would move to a roadmap out. This meant we continued to only support our members virtually. We did however continue to maintain and improve our activity centre Lyneal by spending the designated funds on an ongoing schedule of maintenance work.

We continued to have meetings via Zoom for the Finance Committee, Risk & Governance Committee, the Awards Committee and of course the County Executive. I see these as positive ways to ensure financial information is communicated in a clear and consistent manner.

Reserves Policy

The trustees have agreed to maintain a policy of 3 years worth of rent and service charge payments for the county office which equates to approximately £52,000 and will be reviewed at every financial year end

The bank balances at the year end continue to be in excess of this policy and we expect to spend funds in line with new policy in future financial periods

Free reserves at the year end were £169,292 which are a representation of the charity's unrestricted funds (2020: £176,392)

Public Benefit

In planning our activities for the year the trustees have had due regard for the Charity Commission's guidance on public benefit. In fulfilling the aim of Guiding, being the development of girls and young women, the Charity has organised activities and supported leaders in running events physically and virtually. Girlguiding Shropshire continues to support the national Girlguiding programme by continuing to train it's members free of charge

On behalf of the County Executive Committee



.....
Mrs Victoria Smith-Roe
County Treasurer

Date:

.....
21/04/2022

INDEPENDENT EXAMINER'S REPORT
TO THE TRUSTEES OF THE GUIDE ASSOCIATION SHROPSHIRE

I report to the charity trustees on my examination of the accounts of the charity for the period ended 31 July 2021 which are set out on pages 5 to 7.

Responsibilities and basis of report

As the charity's trustees you are responsible for the preparation of the accounts in accordance with the requirements of the Charities Act 2011 ('the Act').

I report in respect of my examination of the charity's accounts carried out under section 145 of the Act and in carrying out my examination I have followed all the applicable Directions given by the Charity Commission under section 145(5)(b) of the Act.

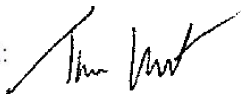
Independent examiner's statement

I have completed my examination. I confirm that no material matters have come to my attention in connection with the examination giving me cause to believe that in any material respect:

1. accounting records were not kept in respect of the charity as required by section 130 of the Act; or
2. the accounts do not accord with those records.

I have no concerns and have come across no other matters in connection with the examination to which

Signed:



Dated: 13/05/2022

Tim Lunt BA FCCA MIRPM

WR Partners
Chartered Accountants
Belmont House
Shrewsbury Business Park
Shrewsbury
Shropshire
SY2 6LG

THE GUIDE ASSOCIATION SHROPSHIRE COUNTY
RECEIPTS AND PAYMENTS ACCOUNT
FOR THE YEAR ENDED 31 JULY 2021

	Unrestricted	Restricted	Designated	Endowment	2021 Total	2020 Total
Receipts					29	2,267
Donations & Grants	29	-	-	-	135	2,909
Letting fees	135	-	-	-	20,464	30,984
Members subscriptions	20,464	-	-	274	3,145	3,902
Investment income	2,871	-	-	-	3,763	26,338
Other income	3,763	-	-	-	19,581	30,727
Sale of badges	19,581	-	-	-		
Total receipts	46,843	-	-	274	47,117	97,127
Payments						
Direct charitable expenditure	33,285	-	9,262	-	42,547	55,320
Management and administration	20,658	-	-	-	20,658	26,721
Total payments	53,943	-	9,262	-	63,205	82,042
Surplus / (Deficit) of receipts over payments	(7,100)	-	(9,262)	274	(16,088)	15,085
Net Movement in funds	(7,100)	-	(9,262)	274		
Bank and cash balances at 1st August 2020	176,392	-	13,155	5,523	195,070	179,985
Bank and cash balances at 31st July 2021	169,292	-	3,893	5,797	178,982	195,070

THE GUIDE ASSOCIATION SHROPSHIRE COUNTY
STATEMENT OF ASSETS AND LIABILITIES
AS AT 31 JULY 2021

	Type	2021	2020
<u>Cash Funds</u>			
Bank and cash balances	Unrestricted	169,292	176,392
Bank and cash balances	Designated	3,893	13,155
Bank and cash balances	Endowment	5,797	5,523
Total cash funds		178,982	195,070
 <u>Investment Assets</u>			
Charifund 1,876 units	Unrestricted	28,937	23,404
Charifund 409 units	Endowment	6,309	5,103
CAF Income Account	Unrestricted	47,381	47,584
CAF Investments	Unrestricted	9,476	9,517
		92,103	85,608
 <u>Assets retained for the charity's own use</u>			
Freehold property Lyneal Centre, Lyneal	Unrestricted	204,171	204,171
Fixtures, fittings and equipment Lyneal Centre	Unrestricted	10,000	10,000
Badges & Office Stocks	Unrestricted	10,095	10,185
Sundry Debtors	Unrestricted	651	1,551
		224,917	225,907
 <u>Liabilities</u>			
Sundry Creditors	Unrestricted	594	1,733

These accounts were approved by

M. V. Smith-Roe

Mrs V Smith-Roe
County Treasurer

Date: 21/04/2022

Sarah Myers

21/5/22

Ms Sarah Myers
County Commissioner

Date:

THE GUIDE ASSOCIATION SHROPSHIRE COUNTY
NOTES TO THE ACCOUNTS 2021

	<u>Opening Balance</u>	<u>Receipts</u>	<u>Payments</u>	<u>Transfer</u>	<u>Surplus /(deficit) of receipts over payments</u>	<u>Closing Balance</u>
<u>Unrestricted Funds</u>						
Shropshire Main	132,448	25,381	(30,903)	600	(4,923)	127,525
Lyneal Activities Centre	30,980	1,886	(3,571)	(600)	(2,285)	28,694
Badge Account	7,639	19,572	(18,863)	0	709	8,348
Training Committee	5,325	4	(606)	0	(602)	4,724
	<u>176,392</u>	<u>46,842</u>	<u>(53,943)</u>	<u>- -</u>	<u>7,101</u>	<u>169,291</u>
<u>Designated Funds</u>						
Outdoor Activity Centre Fund	13,155	-	(9,262)	-	(9,262)	3,893
<u>Endowment Fund</u>						
Elizabeth Mowat Memorial Fund	5,524	274	-	-	274	5,797
	<u>195,070</u>	<u>47,116</u>	<u>(63,206)</u>	<u>-</u>	<u>(16,089)</u>	<u>178,982</u>

The Outdoor Activity Centre continues to spend its maintenance fund and will continue to do so over the coming financial year

The Elizabeth Mowat Memorial Fund was set up in February 1979 following the receipt of £1,000. The income arising is to be applied at the absolute discretion of the County Commissioner for charitable purposes connected with the Guide movement in the county of Shropshire.

THE GUIDE ASSOCIATION - SHROPSHIRE COUNTY

England & Wales - Charity number 1035091

Accounts

THE GUIDE ASSOCIATION SHROPSHIRE COUNTY

ACCOUNTS

FOR THE YEAR ENDED

31 July 2020

REGISTERED CHARITY NO. 1035091

Membership of the County Executive Committee (Trustees) comprises:-

Voting Members

Ms Sarah Myers Miss C Coleman	Role started 01/08/2019 Role started 01/08/2019	The County Commissioner The Assistant County Commissioner
Miss C Coleman Mrs A Ireland Mrs V Smith-Roe Mrs Amanda Mitchell Mrs Melanie Williams Miss R Harding Ms Sarah Myers Miss A Taylor Mrs L Arthan Mrs V Smith-Roe	Role ended 08/12/2019 Role started 29/02/2020 Role ended 29/11/2019 Role started 29/11/2019	The Division Commissioners The County Treasurer

Non Voting Members

Mrs C Jones Mrs M Rayner Mrs B Hodges Mrs H Smith Miss L Milward Mrs J Price Miss K Learning Mrs M Wynn	Role started 01/08/2019 Role ended 31/08/2019	Chairman/Trefoil Guild Chairman/Trefoil Guild Specialist Advisers
--	--	---

Charity registered number

1035091

Principal Office

3&4 Conwy House
St Georges Court
St Georges Road
Donnington
Telford
TF2 7BF

Independent Review

WR Partners
Belmont House
Shrewsbury Business Park
Shrewsbury
Shropshire
SY2 6LG

Main Bankers

CAF Bank Ltd
25 King's Hill
King's Hill
West Malling
Kent
ME19 4JQ

The Guide Association Shropshire

Annual Report for the year ended 31 July 2020

The County Executive Committee, who act as trustees, in accordance with the bye law 9.2C of the Royal Charter of The Guide Association, shall be responsible for directing the development of the principles and aims of Girlguiding, within the County of Shropshire, in accordance with the current issue of:-

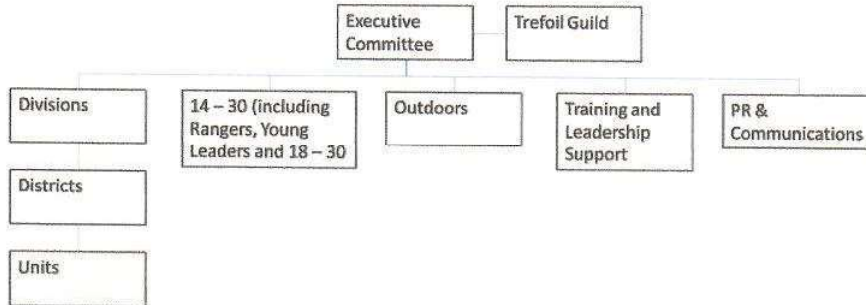
The Royal Charter of Bye Laws
The Guiding Manual
The Handbooks

The Guide Association is an unincorporated charity, constituted under a Royal Charter granted 14 December 1922.

Methods, policies & procedures for the appointment and induction of new trustees

The trustees are the voting members of the Executive Committee. They are the County Commissioner, who is appointed by the Midland Region Commissioner, her Assistant, the County Treasurer and the Division Commissioners all of whom are the appointees of the County Commissioner in consultation with the other trustees. Five meetings are held each year.

The Management structure of Girlguiding Shropshire is as follows. All communications are bi-directional.



Objectives and Activities

The Guide Association is the UK's largest voluntary organisation for girls and young women. Girlguiding Shropshire is set within the Guide Association Midlands Region and is therefore an integral part of the National Association.

Girlguiding UK's vision

An equal world where all girls can make a positive difference, be happy, safe and fulfil their potential.

Girlguiding UK's Mission

Through fun, friendship, challenge and adventure we empower girls to find their voice, inspiring them to discover the best in themselves and to make a positive difference in their community.

Our Values

Our values are our shared commitment to be: Caring, Challenging, Empowering, Fun, Inclusive and Inspiring.

Achievements and Performance

Girlguiding is the leading charity for girls and young women in the UK. We build girls' confidence and raise their aspirations. We give them the chance to discover their full potential and encourage them to be a powerful force for good. We give them a space to have fun. Girlguiding Shropshire continues to offer our young women fun, exciting activities and the chance to make lifelong friends. You'll find us in many communities, helping to give girls a head start in life and encouraging them to be happy, self-confident and curious about the difference they can make.

In Autumn 2019, Girlguiding Shropshire decided to relocate its county office. The decision to move to new premises provided the opportunity to rethink what the organisation needed from a property over the next 5 years. The new Headquarters has enabled the organisation to create a flexible space which can be used for meetings, trainings and events and also home for our growing county archive which we can now display.

The county plan has been revised alongside the launch of the new national strategy 'Today, Tomorrow, Together'. Objectives have been agreed for the next 5 years and these will be reviewed on an annual basis by the county team. Task and finish groups have been identified for key areas of: Growth and Retention, GO database administration and hearing girls voices within the county. There have been a number of new appointments to the county team during the year as existing roles have come to their end dates.

As with all youth organisations, the operations of Girlguiding Shropshire were impacted by the Coronavirus pandemic from March 2020. The national programme was adapted to enable virtual delivery with a theme of 'Adventures at home'. Some units have adapted to provide online meetings and about 30% of our units took the opportunity to meet outdoors and face to face when guidance permitted, subject to full risk assessment. The full impact of these pandemic restrictions on our member numbers are anticipated to be seen in 2021 prior to the annual subscriptions.

Through the year we have maintained a full programme of trainings, either face to face or virtually during Covid. This includes Safe Space, 1st Response, programme training and our usual September training week for all volunteers and Young Leaders. We have also held our Commissioner 'Connect' networking event and a virtual Commissioner training day. Unfortunately our annual County Day event was cancelled due to lockdown. This has been reconfigured as a virtual event for 2021. Trainings have remained free to all volunteers throughout 2019/2020.

We organised a combination of county events for our members. Face to face events included; 150 girls from across the county attending the Polar Express evening before Christmas 2019 and a Girlguiding 'takeover' of the Telford Park Run which was also a great publicity opportunity. The Outdoor Team organised a walk up the Wrekin to see the sunrise in celebration of Thinking Day 2020. The new 18-30 offer 'inspire' was launched with a quiz evening and the group created a successful virtual guiding challenge badge during the first lockdown, which was well adopted inside and outside of the county.

We also launched our Shropshire Way walking challenge badge and relaunched a streamlined version of the Go Wild badge to provide accessible ideas for outdoor activities for girls and volunteers to do with their families/bubbles during the weekends and holidays. The 'Shropshire Stay At Home Sleepover' was a county wide virtual event held over the May bank holiday. It consisted of a variety of challenges which could be completed at home and with units on Zoom.

Financial Review

The year started with the move to our new County Office to further enhance our offering to the adult volunteers within the County. A decision was also made to cancel the County trip to Mexico due to the rising costs in travel and insurance. This later proved very prudent given the global pandemic that hit us. We continue to maintain and improve our activity centre Lyneal by spending the designated funds on an ongoing schedule of maintenance work. We once again had a local Polar Express trip.

During 2020 we have continued Guiding on a more virtual and support basis to keep connected with our members during the coronavirus pandemic. We have also strengthened the support we provide by creating a Finance Committee and making changes to our Risk & Governance Committee, the Awards Committee and the structure of the County Executive. I see these as positive ways to ensure financial information is communicated in a clear and consistent manner.

Reserves Policy

The trustees have agreed to maintain a policy of 3 years worth of rent and service charge payments for the county office which equates to approximately £52,000 and will be reviewed at every financial year end.

The bank balances at the year end continue to be in excess of this policy and we expect to spend funds in line with the new policy in future financial periods.

Free reserves at the year end were £176,392 which are representation of the charity's unrestricted funds (2019: £150,535).

Public Benefit

In planning our activities for the year the trustees have had due regard for the Charity Commission's guidance on public benefit. In fulfilling the aim of Guiding, being the development of girls and young women, the Charity has organised activities and supported leaders in running events physically and virtually. Girlguiding Shropshire continues to support the national Girlguiding programme by continuing to train it's members free of charge.

Approved on behalf of the County Executive Committee



.....
Mrs Victoria Smith-Roe
County Treasurer

Date:

14/04/2021
.....

Independent Examiner's Report

I report to the charity trustees on my examination of the accounts of the charity for the year ended 31 July 2020 which are set out on pages 6 to 8.

Responsibilities and basis of report

As the charity's trustees you are responsible for the preparation of the accounts in accordance with the requirements of the Charities Act 2011 ('the Act').

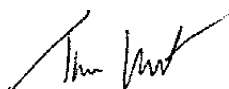
I report in respect of my examination of the charity's accounts carried out under section 145 of the Act and in carrying out my examination I have followed all the applicable Directions given by the Charity Commission under section 145(5)(b) of the Act.

Independent examiner's statement

I have completed my examination. I confirm that no material matters have come to my attention in connection with the examination giving me cause to believe that in any material respect:

1. accounting records were not kept in respect of the charity as required by section 130 of the Act; or
2. the accounts do not accord with those records

I have no concerns and have come across no other matters in connection with the examination to which attention should be drawn in this report in order to enable a proper understanding of the accounts to be reached.



Tim Lunt

BA FCCA MIRPM

WR Partners

Chartered Accountants

Date 18/05/2021

THE GUIDE ASSOCIATION SHROPSHIRE
RECEIPTS AND PAYMENTS ACCOUNT
FOR THE YEAR ENDED 31 JULY 2020

	Unrestricted	Restricted	Designated	Endowment	2020 Total	2019 Total
Receipts						
Donations & Grants	2,267	-	-	-	2,267	2,027
Letting fees	2,909	-	-	-	2,909	6,295
Members subscriptions	30,984	-	-	-	30,984	29,886
Investment income	3,563	-	-	339	3,902	3,460
Other income	22,438	-	3,900	-	26,338	38,773
Sale of badges	30,727	-	-	-	30,727	45,205
Total receipts	92,888	-	3,900	339	97,127	125,646
Payments						
Direct charitable expenditure	40,310	-	15,010	-	55,320	35,652
Management and administration	26,721	-	-	-	26,721	70,883
Total payments	67,032	-	15,010	-	82,042	106,535
Surplus / (Deficit) of receipts over payments	25,856	-	(11,110)	339	15,085	19,112
Net Movement in funds	25,856	-	(11,110)	339		
Bank and cash balances at 1st August 2019	150,536	-	24,265	5,184	179,985	160,873
Bank and cash balances at 31st July 2020	176,392	-	13,155	5,523	195,070	179,984

THE GUIDE ASSOCIATION SHROPSHIRE
STATEMENT OF ASSETS AND LIABILITIES
AS AT 31 JULY 2020

	Type	2020	2019
<u>Cash Funds</u>			
Bank and cash balances	Unrestricted	176,392	150,536
Bank and cash balances	Designated	13,155	24,265
Bank and cash balances	Endowment	5,523	5,184
Total cash funds		195,070	179,985
<u>Investment Assets</u>			
Charifund 1,876 units	Unrestricted	23,404	29,943
Charifund 409 units	Endowment	5,103	6,528
CAF Income Account	Unrestricted	47,584	47,538
CAF Investments	Unrestricted	9,517	9,508
		85,608	93,517
<u>Assets retained for the charity's own use</u>			
Freehold property Lyneal Centre, Lyneal	Unrestricted	204,171	204,171
Fixtures, fittings and equipment Lyneal Centre	Unrestricted	10,000	10,000
Badges & Office Stocks	Unrestricted	10,185	9,067
Sundry Debtors	Unrestricted	1,551	1,510
		225,907	224,748
<u>Liabilities</u>			
Sundry Creditors	Unrestricted	1,733	1,438

These accounts were approved by



Mrs V Smith-Roe
County Treasurer

Date: 14/04/2021



Ms Sarah Myers
County Commissioner

Date: 13/5/2021

THE GUIDE ASSOCIATION SHROPSHIRE
NOTES TO THE ACCOUNTS 2020

Cash funds

	<u>Opening Balance</u>	<u>Receipts</u>	<u>Payments</u>	<u>Transfer</u>	<u>Surplus /(deficit) of receipts over payments</u>	<u>Closing Balance</u>
<u>Unrestricted Funds</u>						
Shropshire Main	121,108	46,504	(31,802)	(3,353)	11,349	132,448
Lyneal Activities Centre	21,429	15,659	(5,508)	(600)	9,551	30,980
Badge Account	7,067	30,287	(26,724)	(3,000)	563	7,639
HQ Account	225	57	(48)	(234)	(225)	0
Training Committee	707	381	(2,997)	7,234	4,618	5,325
	<u>150,536</u>	<u>92,887</u>	<u>(67,079)</u>	<u>47</u>	<u>25,856</u>	<u>176,392</u>
<u>Designated Funds</u>						
Waves Camp Account	47	-		(47)	(47)	0
Outdoor Activity Centre Fund	16,268	-	(3,113)	-	(3,113)	13,155
Mexico 2020 Trip	7,950	3,900	(11,850)	-	(7,950)	-
<u>Endowment Fund</u>						
Elizabeth Mowat Memorial Fund	5,184	339	-	-	339	5,523
	<u>179,985</u>	<u>97,127</u>	<u>(82,042)</u>	<u>-</u>	<u>15,086</u>	<u>195,070</u>

The Outdoor Activity Centre continues to spend its maintenance fund and will continue to do so over the coming financial year

The planned county trip planned to Mexico (Our Cabana) in 2020 has been cancelled due to current travel issues

The Elizabeth Mowat Memorial Fund was set up in February 1979 following the receipt of £1,000. The income arising is to be applied at the absolute discretion of the County Commissioner for charitable purposes connected with the Guide movement in the county of Shropshire.